

Data Path : Z:\pestpcbsrv\HPCHEM1\ECD\_Q\Data\PQ111819\  
 Data File : PQ045131.D  
 Signal(s) : Signal #1: ECD1A.ch Signal #2: ECD2B.ch  
 Acq On : 18 Nov 2019 23:18  
 Operator : SM\AJ  
 Sample : K5809-07  
 Misc :  
 ALS Vial : 40 Sample Multiplier: 1

Instrument :  
 ECD\_Q  
 ClientSampleId :  
 BFPT6

Integration File signal 1: autoint1.e  
 Integration File signal 2: autoint2.e  
 Quant Time: Nov 20 00:38:42 2019  
 Quant Method : Z:\pestpcbsrv\HPCHEM1\ECD\_Q\Method\PQ110719CLP.M  
 Quant Title : GC EXTRACTABLES  
 QLast Update : Fri Nov 08 03:35:55 2019  
 Response via : Initial Calibration  
 Integrator: ChemStation

Volume Inj. : 1 µl  
 Signal #1 Phase : ZB MR1 Signal #2 Phase: ZB MR2  
 Signal #1 Info : 30Mx0.32mmx 0.5µm Signal #2 Info : 30M x 0.32mm x 0.25µm

Compound	RT#1	RT#2	Resp#1	Resp#2	ng/ml	ng/ml
-----						
System Monitoring Compounds						
1) SA Tetrachlo...	5.101	4.314	189.6E6	92420435	23.890	19.600
2) SA Decachlor...	11.194	9.701	167.1E6	15101376	24.130	2.226 #
Target Compounds						
3) L1 AR-1016-1	6.417	5.595	8828.1E6	7048.2E6	35128.563	38268.110
4) L1 AR-1016-2	6.440	5.614	12980.4E6	9967.7E6	34326.506	37722.814
5) L1 AR-1016-3	6.507	5.811	4196.3E6	4691.7E6	18074.322	36354.117 #
6) L1 AR-1016-4	6.612	5.860	5620.4E6	6752.7E6	29685.566	62185.934 #
7) L1 AR-1016-5	6.927	6.095	10150.8E6	8867.4E6	52043.446	58039.347
8) L2 AR-1221-1	5.344	4.566	24132940	261.8E6	291.205	4881.655 #
9) L2 AR-1221-2	5.447	4.674	56778258	36161971	967.049	915.950
10) L2 AR-1221-3	5.532	4.768	264.4E6	168.1E6	1347.086	1286.043
11) L3 AR-1232-1	5.532	4.768	264.4E6	168.1E6	1516.490	1457.457
12) L3 AR-1232-2	6.122	5.614	6508.5E6	9967.7E6	72569.374	80141.649
13) L3 AR-1232-3	6.440	5.811	12980.4E6	4691.7E6	73516.673	79225.092
14) L3 AR-1232-4	6.612	5.906	5620.4E6	6640.1E6	63525.022	110458.659 #
15) L3 AR-1232-5	6.711	6.095	8603.3E6	8867.4E6	129684.195	121749.716
16) L4 AR-1242-1	6.417	5.595	8828.1E6	7048.2E6	41071.434	44954.146
17) L4 AR-1242-2	6.440	5.614	12980.4E6	9967.7E6	40363.553	44549.157
18) L4 AR-1242-3	6.507	5.811	4196.3E6	4691.7E6	21149.199	42212.203 #
19) L4 AR-1242-4	6.612	5.906	5620.4E6	6640.1E6	34810.080	55684.921 #
20) L4 AR-1242-5	7.396	6.479	10404.1E6	16314.6E6	57492.371	99356.797 #
21) L5 AR-1248-1	6.417	5.595	8828.1E6	7048.2E6	52417.215	56634.243
22) L5 AR-1248-2	6.711	5.860	8603.3E6	6752.7E6	35124.828	39668.448
23) L5 AR-1248-3	6.927	5.906	10150.8E6	6640.1E6	37297.504	37128.584
24) L5 AR-1248-4	7.356	6.095	10632.1E6	8867.4E6	35104.972	40737.493
25) L5 AR-1248-5	7.396	6.524	10404.1E6	8488.9E6	36371.755	38068.943
26) L6 AR-1254-1	7.325	6.479	13338.4E6	16314.6E6	41224.250	44847.459
27) L6 AR-1254-2	7.558	6.641	18734.5E6	9612.6E6	37733.031	29845.475
28) L6 AR-1254-3	7.938	7.069	12621.6E6	18211.0E6	23713.219	32830.660 #
29) L6 AR-1254-4	8.235	7.312	7650.1E6	6485.8E6	19803.972	18145.869
30) L6 AR-1254-5	8.666	7.747	24194.7E6	22047.6E6	56008.581	44093.180
31) L7 AR-1260-1	8.107	7.206	16156.8E6	17074.5E6	51730.670	55731.103
32) L7 AR-1260-2	8.374	7.407	18446.2E6	16013.0E6	45052.621	40554.134
33) L7 AR-1260-3	8.742	7.563	9767.8E6	16104.9E6	29918.546	47009.507 #
34) L7 AR-1260-4	8.974	8.052	14328.2E6	10081.7E6	37678.997	32876.077
35) L7 AR-1260-5	9.313	8.305	24318.7E6	24026.0E6	31591.083	30698.978
36) L8 AR-1262-1	8.801	7.747	5848.9E6	22047.6E6	28039.686	87112.417 #
37) L8 AR-1262-2	9.313	8.305	24318.7E6	24026.0E6	26925.273	24349.102
38) L8 AR-1262-3	9.654	8.592	15682.1E6	4084.5E6	25713.616	10600.589 #
39) L8 AR-1262-4	9.710	8.658	7845.3E6	17273.4E6	17268.102	23446.821 #
40) L8 AR-1262-5	10.417	9.134	5024.3E6	59270114	16424.766	170.236 #
41) L9 AR-1268-1	9.654	8.592	15682.1E6	4084.5E6	14043.041	3396.770 #

Data Path : Z:\pestpcbsrv\HPCHEM1\ECD\_Q\Data\PQ111819\  
 Data File : PQ045131.D  
 Signal(s) : Signal #1: ECD1A.ch Signal #2: ECD2B.ch  
 Acq On : 18 Nov 2019 23:18  
 Operator : SM\AJ  
 Sample : K5809-07  
 Misc :  
 ALS Vial : 40 Sample Multiplier: 1

Instrument :  
 ECD\_Q  
 ClientSampleId :  
 BFPT6

Integration File signal 1: autoint1.e  
 Integration File signal 2: autoint2.e  
 Quant Time: Nov 20 00:38:42 2019  
 Quant Method : Z:\pestpcbsrv\HPCHEM1\ECD\_Q\Method\PQ110719CLP.M  
 Quant Title : GC EXTRACTABLES  
 QLast Update : Fri Nov 08 03:35:55 2019  
 Response via : Initial Calibration  
 Integrator: ChemStation

Volume Inj. : 1 µl  
 Signal #1 Phase : ZB MR1 Signal #2 Phase: ZB MR2  
 Signal #1 Info : 30Mx0.32mmx 0.5µm Signal #2 Info : 30M x 0.32mm x 0.25µm

	Compound	RT#1	RT#2	Resp#1	Resp#2	ng/ml	ng/ml
42)	L9 AR-1268-2	9.710	8.658	7845.3E6	17273.4E6	7717.797	15511.532 #
43)	L9 AR-1268-3	9.966	8.864	126.3E6	279.4E6	144.435	300.390 #
44)	L9 AR-1268-4	10.417	9.134	5024.3E6	59270114	14472.494	147.161 #
45)	L9 AR-1268-5	10.846	9.435	856.5E6	35361678	328.327	11.701 #

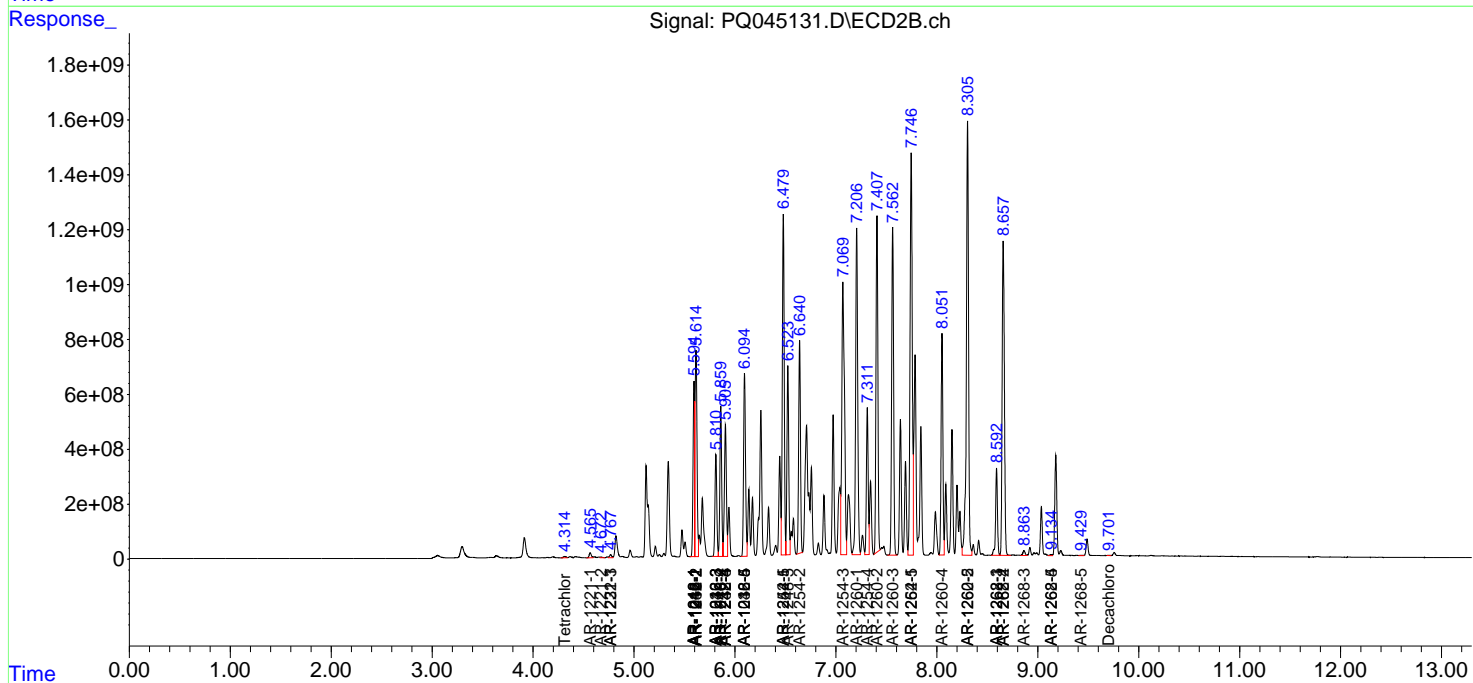
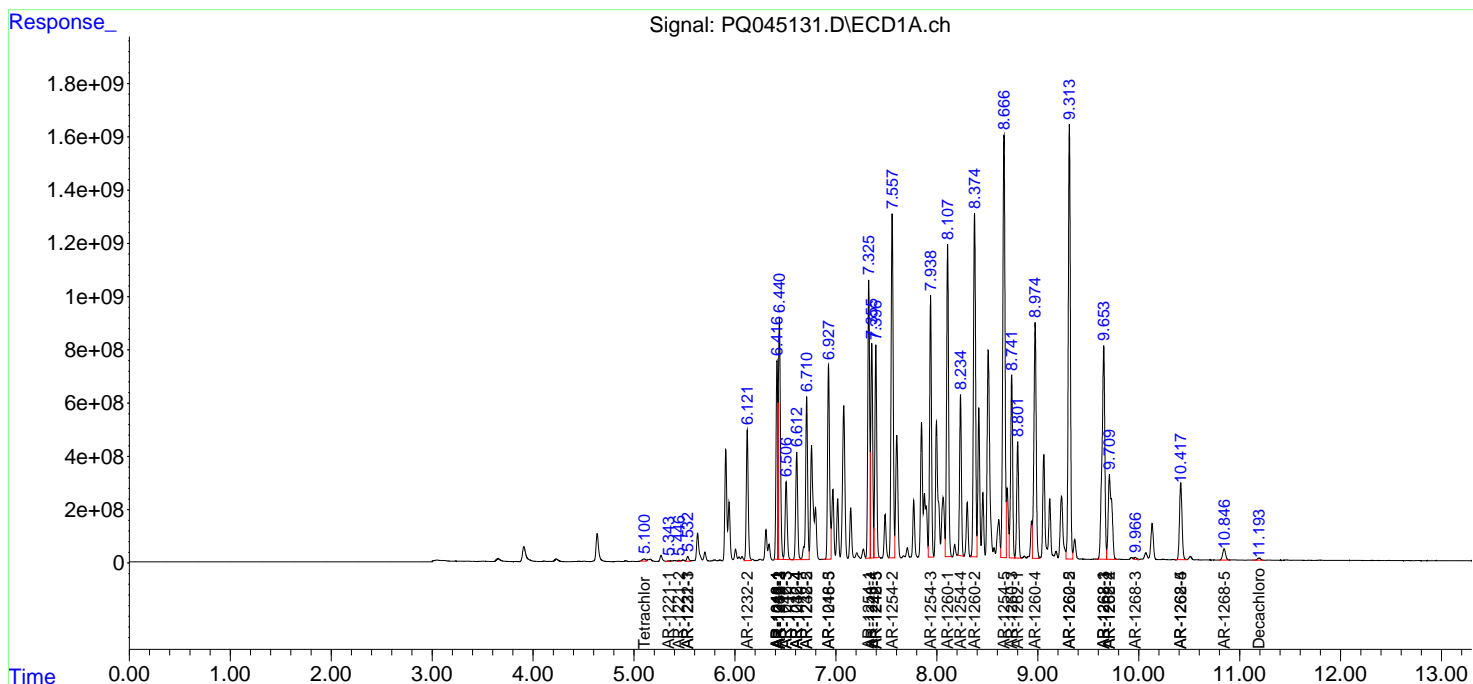
(f)=RT Delta > 1/2 Window (#)=Amounts differ by > 25% (m)=manual int.

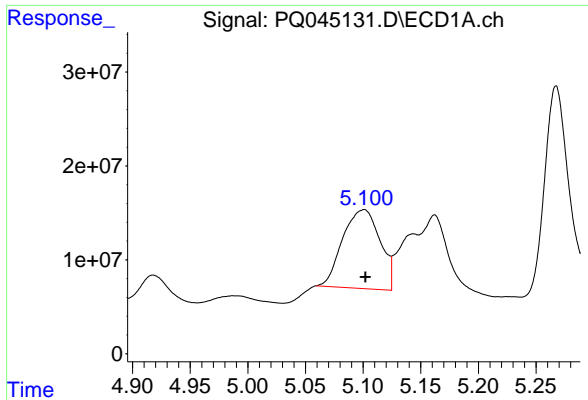
Data Path : Z:\pestpcbsrv\HPCHEM1\ECD\_Q\Data\PQ111819\  
 Data File : PQ045131.D  
 Signal(s) : Signal #1: ECD1A.ch Signal #2: ECD2B.ch  
 Acq On : 18 Nov 2019 23:18  
 Operator : SM\AJ  
 Sample : K5809-07  
 Misc :  
 ALS Vial : 40 Sample Multiplier: 1

Instrument :  
 ECD\_Q  
 ClientSampled :  
 BFPT6

Integration File signal 1: autoint1.e  
 Integration File signal 2: autoint2.e  
 Quant Time: Nov 20 00:38:42 2019  
 Quant Method : Z:\pestpcbsrv\HPCHEM1\ECD\_Q\Method\PQ110719CLP.M  
 Quant Title : GC EXTRACTABLES  
 QLast Update : Fri Nov 08 03:35:55 2019  
 Response via : Initial Calibration  
 Integrator: ChemStation

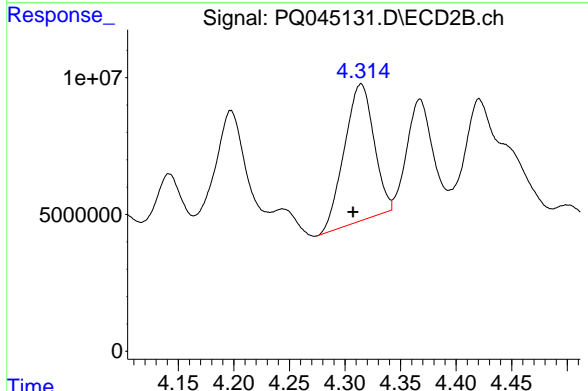
Volume Inj. : 1 µl  
 Signal #1 Phase : ZB MR1 Signal #2 Phase: ZB MR2  
 Signal #1 Info : 30Mx0.32mmx 0.5µm Signal #2 Info : 30M x 0.32mm x 0.25µm



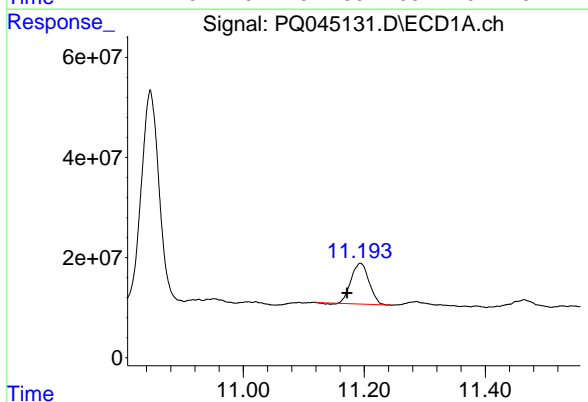


#1 Tetrachloro-m-xylene  
 R.T.: 5.101 min  
 Delta R.T.: 0.000 min  
 Response: 189637437  
 Conc: 23.89 ng/ml

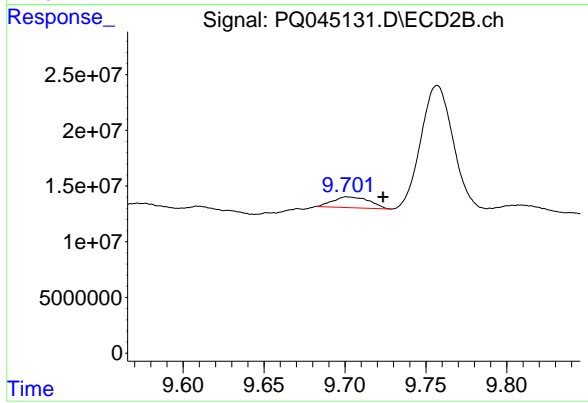
Instrument :  
 ECD\_Q  
 ClientSampleId :  
 BFPT6



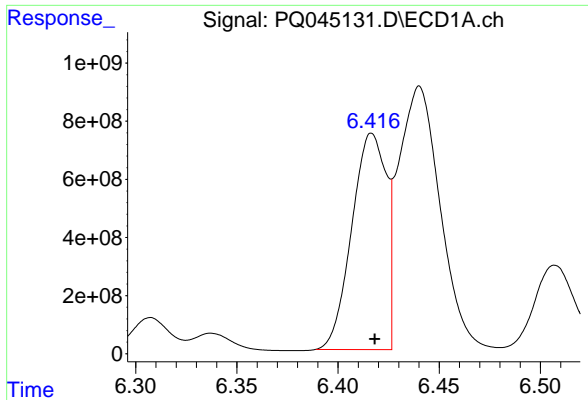
#1 Tetrachloro-m-xylene  
 R.T.: 4.314 min  
 Delta R.T.: 0.007 min  
 Response: 92420435  
 Conc: 19.60 ng/ml



#2 Decachlorobiphenyl  
 R.T.: 11.194 min  
 Delta R.T.: 0.022 min  
 Response: 167121233  
 Conc: 24.13 ng/ml



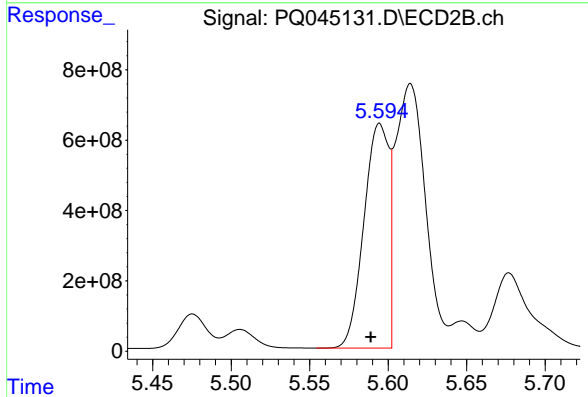
#2 Decachlorobiphenyl  
 R.T.: 9.701 min  
 Delta R.T.: -0.022 min  
 Response: 15101376  
 Conc: 2.23 ng/ml



#3 AR-1016-1

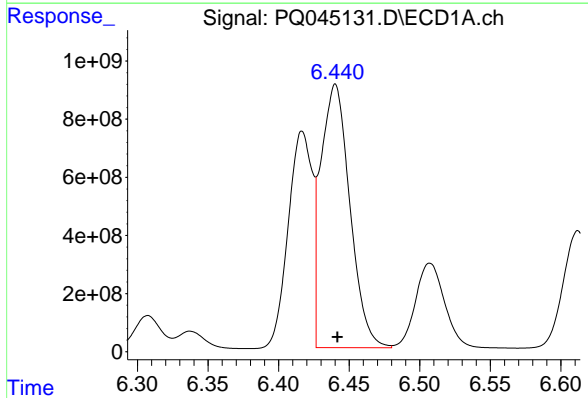
R.T.: 6.417 min  
 Delta R.T.: -0.001 min  
 Response: 8828090399  
 Conc: 35128.56 ng/ml

Instrument :  
 ECD\_Q  
 ClientSampled :  
 BFPT6



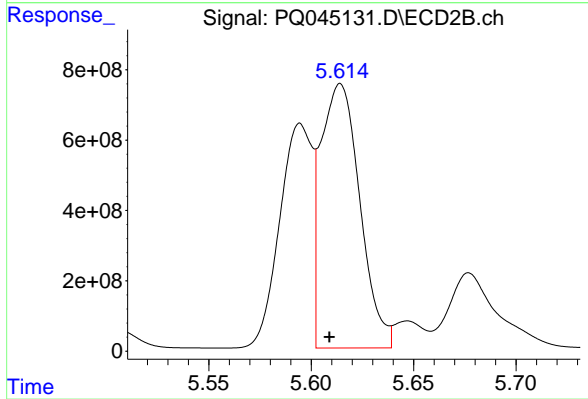
#3 AR-1016-1

R.T.: 5.595 min  
 Delta R.T.: 0.006 min  
 Response: 7048214262  
 Conc: 38268.11 ng/ml



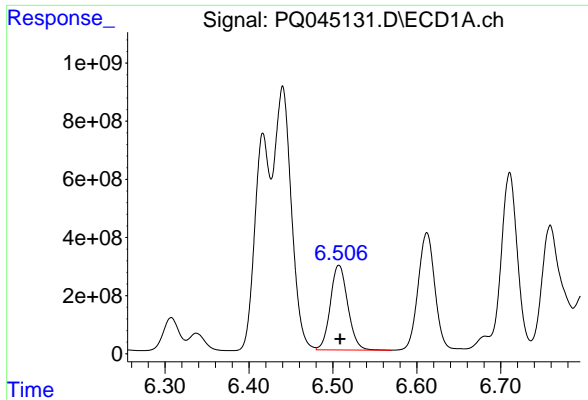
#4 AR-1016-2

R.T.: 6.440 min  
 Delta R.T.: -0.001 min  
 Response: 12980399425  
 Conc: 34326.51 ng/ml



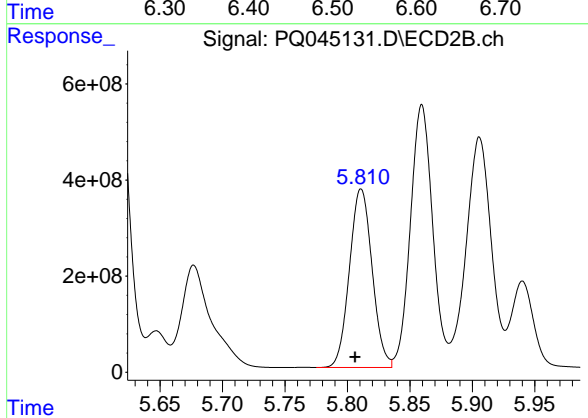
#4 AR-1016-2

R.T.: 5.614 min  
 Delta R.T.: 0.005 min  
 Response: 9967654581  
 Conc: 37722.81 ng/ml

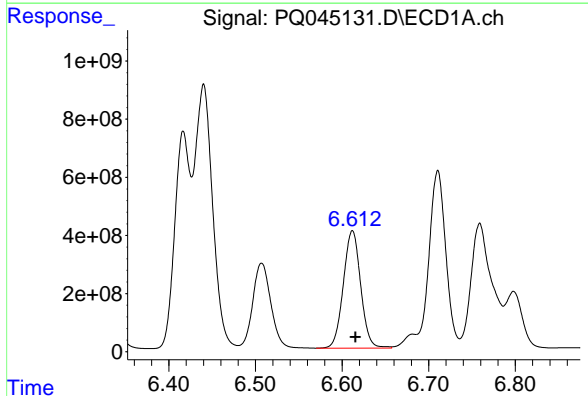


#5 AR-1016-3  
 R.T.: 6.507 min  
 Delta R.T.: -0.002 min  
 Response: 4196282561  
 Conc: 18074.32 ng/ml

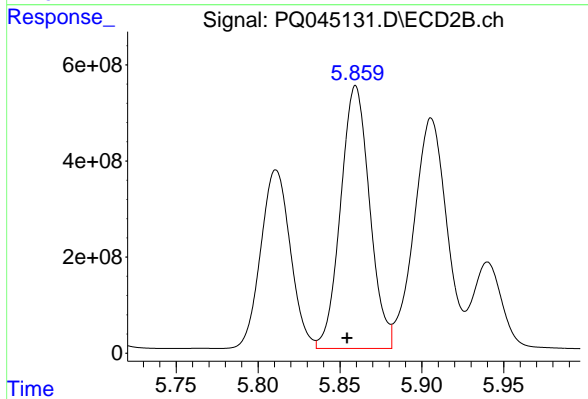
Instrument :  
 ECD\_Q  
 ClientSampled :  
 BFPT6



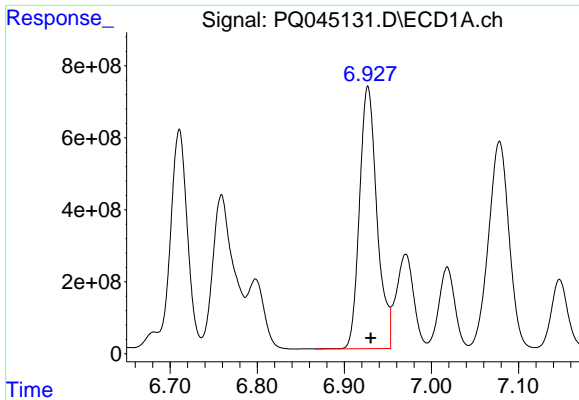
#5 AR-1016-3  
 R.T.: 5.811 min  
 Delta R.T.: 0.005 min  
 Response: 4691692472  
 Conc: 36354.12 ng/ml



#6 AR-1016-4  
 R.T.: 6.612 min  
 Delta R.T.: -0.003 min  
 Response: 5620375411  
 Conc: 29685.57 ng/ml



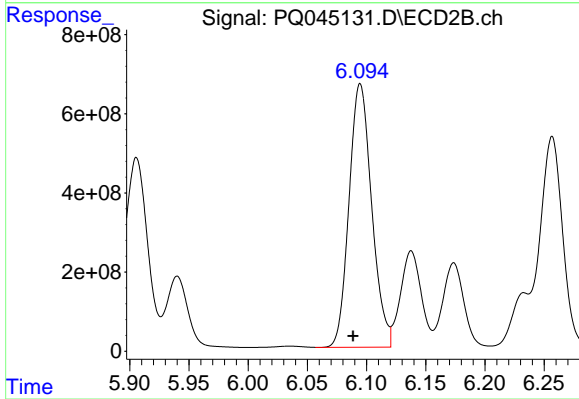
#6 AR-1016-4  
 R.T.: 5.860 min  
 Delta R.T.: 0.005 min  
 Response: 6752718614  
 Conc: 62185.93 ng/ml



#7 AR-1016-5

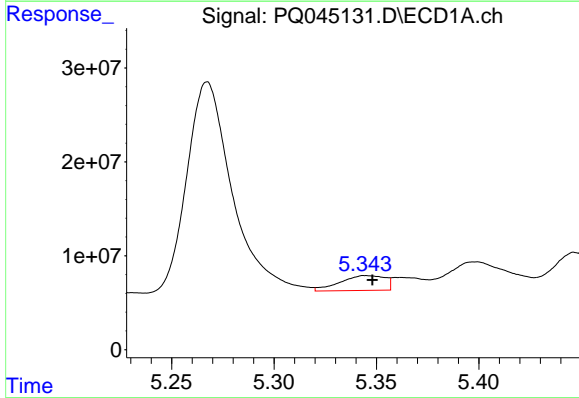
R.T.: 6.927 min  
 Delta R.T.: -0.003 min  
 Response: 10150789591  
 Conc: 52043.45 ng/ml

Instrument :  
 ECD\_Q  
 ClientSampled :  
 BFPT6



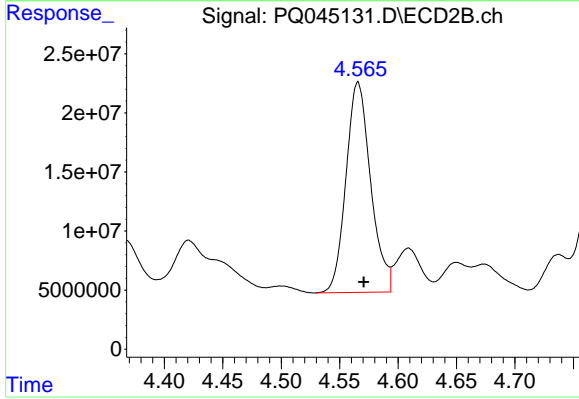
#7 AR-1016-5

R.T.: 6.095 min  
 Delta R.T.: 0.006 min  
 Response: 8867408785  
 Conc: 58039.35 ng/ml



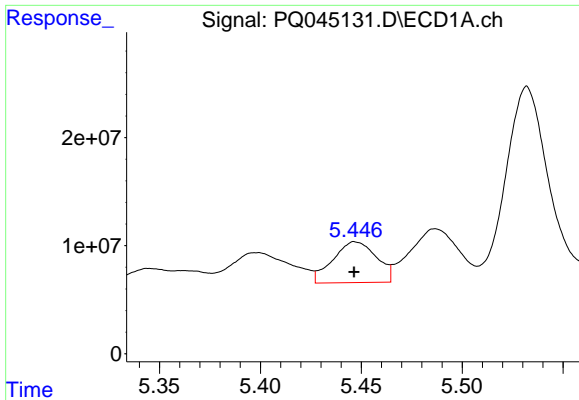
#8 AR-1221-1

R.T.: 5.344 min  
 Delta R.T.: -0.004 min  
 Response: 24132940  
 Conc: 291.20 ng/ml



#8 AR-1221-1

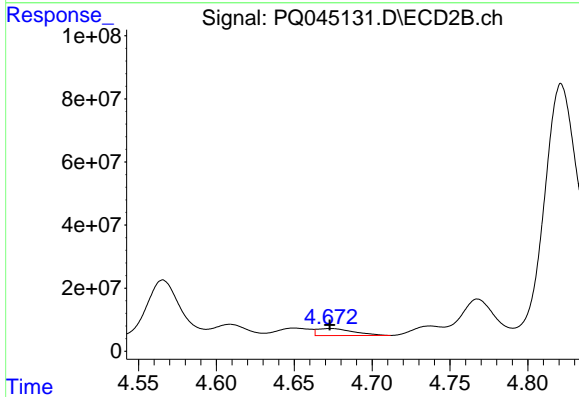
R.T.: 4.566 min  
 Delta R.T.: -0.005 min  
 Response: 261846687  
 Conc: 4881.66 ng/ml



#9 AR-1221-2

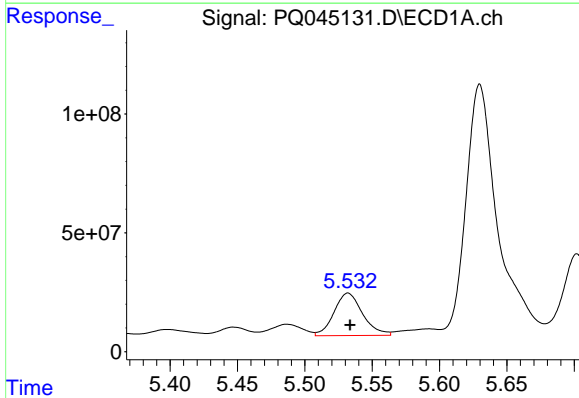
R.T.: 5.447 min  
 Delta R.T.: 0.000 min  
 Response: 56778258  
 Conc: 967.05 ng/ml

Instrument :  
 ECD\_Q  
 ClientSampleId :  
 BFPT6



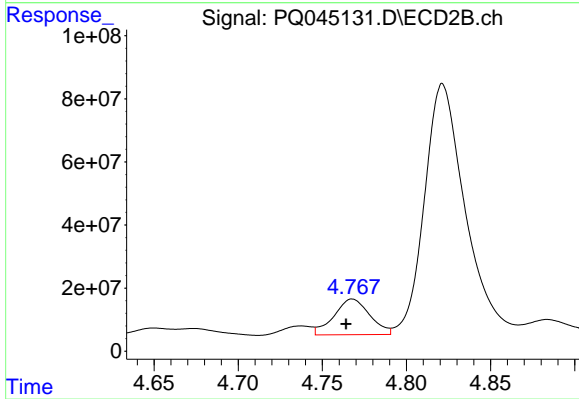
#9 AR-1221-2

R.T.: 4.674 min  
 Delta R.T.: 0.000 min  
 Response: 36161971  
 Conc: 915.95 ng/ml



#10 AR-1221-3

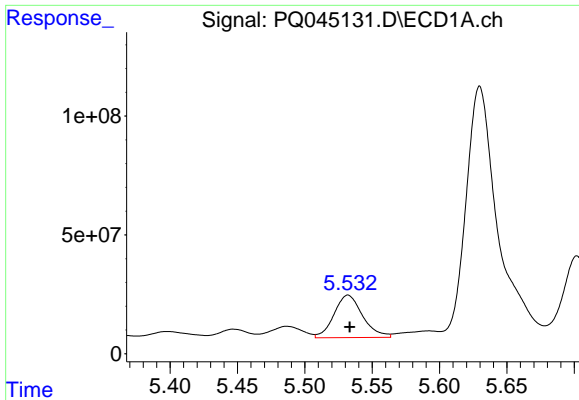
R.T.: 5.532 min  
 Delta R.T.: -0.001 min  
 Response: 264362054  
 Conc: 1347.09 ng/ml



#10 AR-1221-3

R.T.: 4.768 min  
 Delta R.T.: 0.004 min  
 Response: 168104044  
 Conc: 1286.04 ng/ml

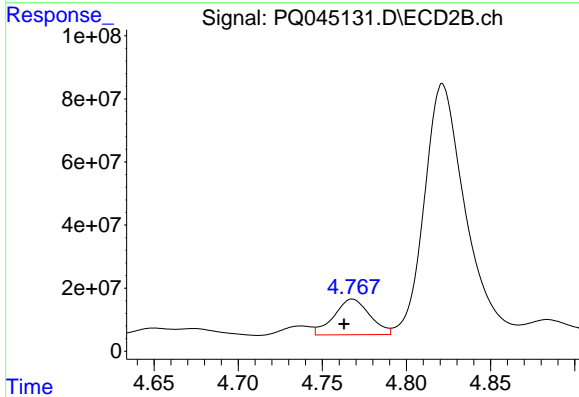




#11 AR-1232-1

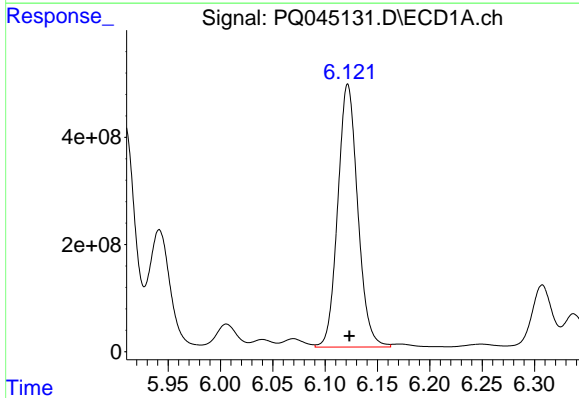
R.T.: 5.532 min  
 Delta R.T.: -0.001 min  
 Response: 264362054  
 Conc: 1516.49 ng/ml

Instrument :  
 ECD\_Q  
 ClientSampled :  
 BFPT6



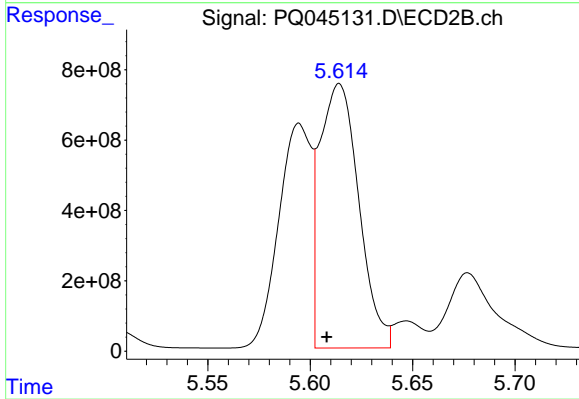
#11 AR-1232-1

R.T.: 4.768 min  
 Delta R.T.: 0.005 min  
 Response: 168104044  
 Conc: 1457.46 ng/ml



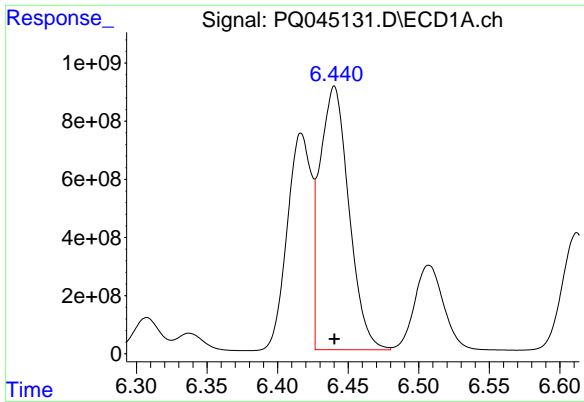
#12 AR-1232-2

R.T.: 6.122 min  
 Delta R.T.: -0.002 min  
 Response: 6508540981  
 Conc: 72569.37 ng/ml



#12 AR-1232-2

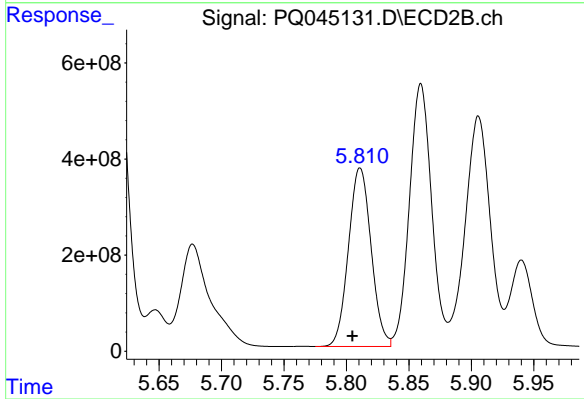
R.T.: 5.614 min  
 Delta R.T.: 0.006 min  
 Response: 9967654581  
 Conc: 80141.65 ng/ml



#13 AR-1232-3

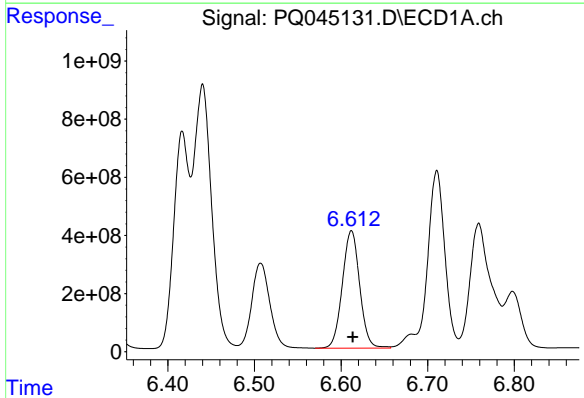
R.T.: 6.440 min  
 Delta R.T.: 0.000 min  
 Response: 12980399425  
 Conc: 73516.67 ng/ml

Instrument :  
 ECD\_Q  
 ClientSampled :  
 BFPT6



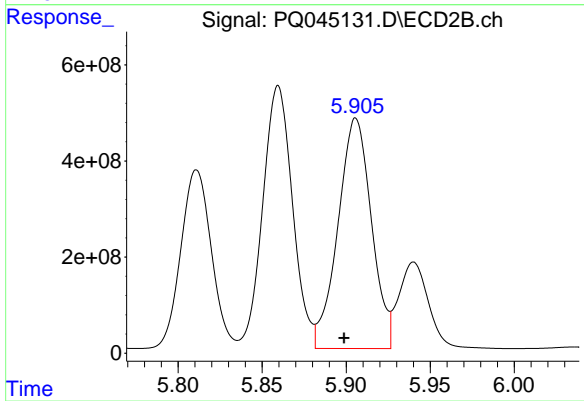
#13 AR-1232-3

R.T.: 5.811 min  
 Delta R.T.: 0.006 min  
 Response: 4691692472  
 Conc: 79225.09 ng/ml



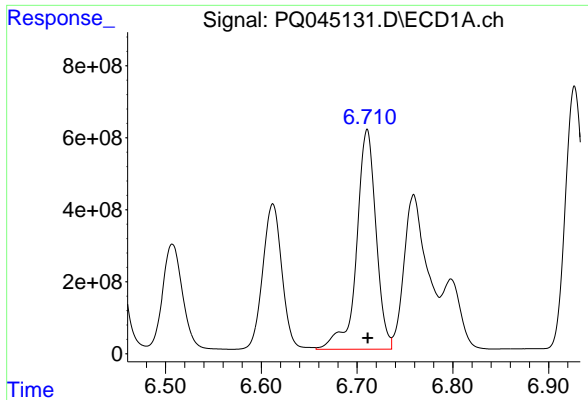
#14 AR-1232-4

R.T.: 6.612 min  
 Delta R.T.: -0.001 min  
 Response: 5620375411  
 Conc: 63525.02 ng/ml



#14 AR-1232-4

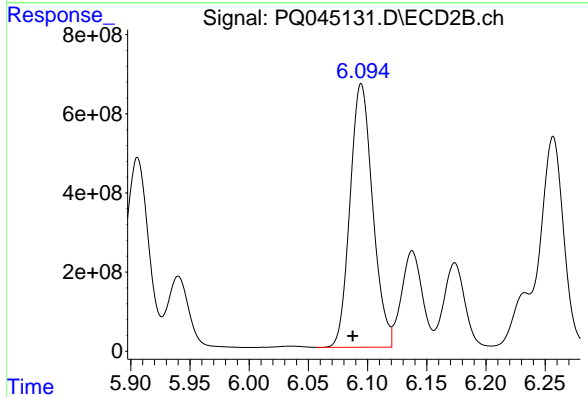
R.T.: 5.906 min  
 Delta R.T.: 0.007 min  
 Response: 6640143858  
 Conc: 110458.66 ng/ml



#15 AR-1232-5

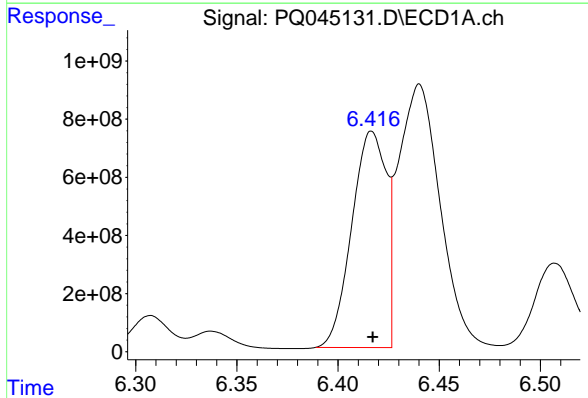
R.T.: 6.711 min  
 Delta R.T.: 0.000 min  
 Response: 8603254178  
 Conc: 129684.19 ng/ml

**Instrument :**  
 ECD\_Q  
**ClientSampled :**  
 BFPT6



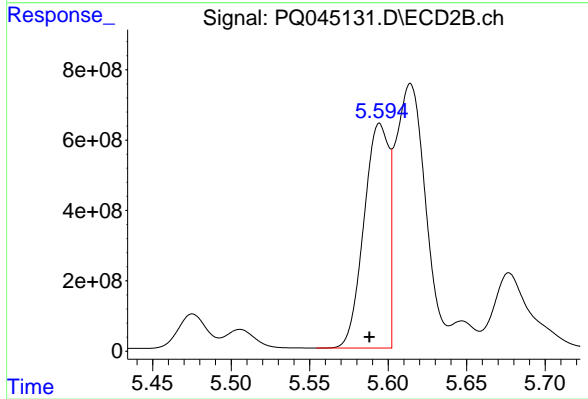
#15 AR-1232-5

R.T.: 6.095 min  
 Delta R.T.: 0.007 min  
 Response: 8867408785  
 Conc: 121749.72 ng/ml



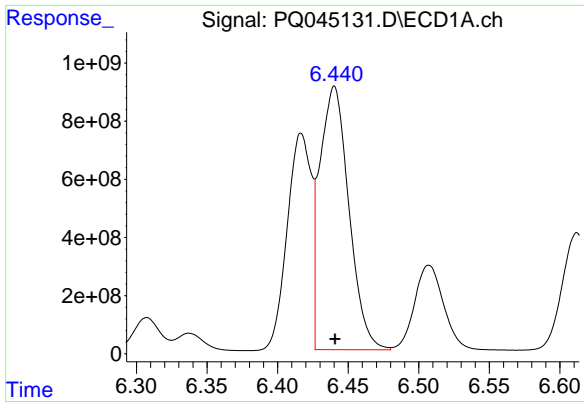
#16 AR-1242-1

R.T.: 6.417 min  
 Delta R.T.: 0.000 min  
 Response: 8828090399  
 Conc: 41071.43 ng/ml



#16 AR-1242-1

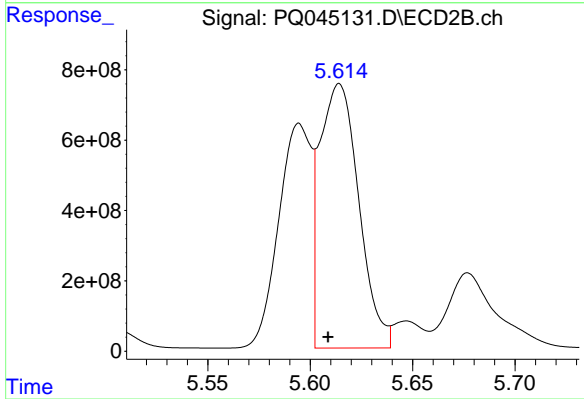
R.T.: 5.595 min  
 Delta R.T.: 0.006 min  
 Response: 7048214262  
 Conc: 44954.15 ng/ml



#17 AR-1242-2

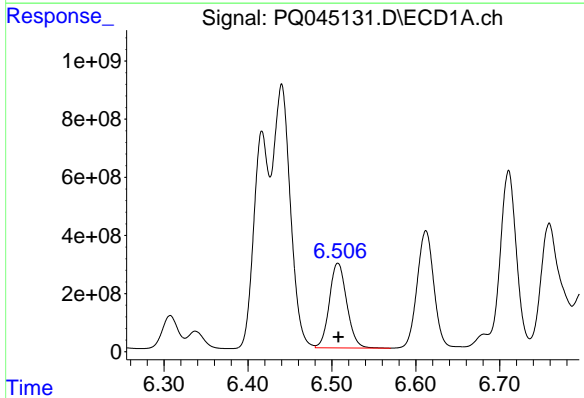
R.T.: 6.440 min  
 Delta R.T.: 0.000 min  
 Response: 12980399425  
 Conc: 40363.55 ng/ml

Instrument :  
 ECD\_Q  
 ClientSampled :  
 BFPT6



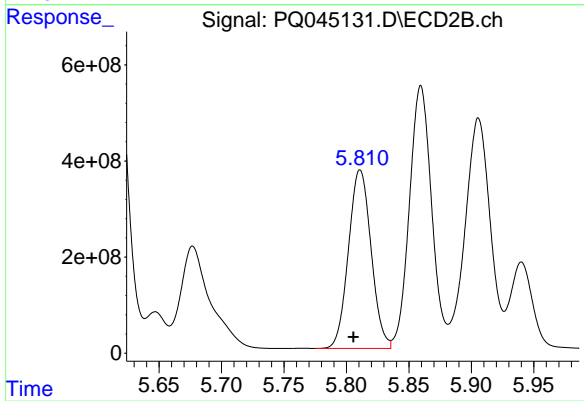
#17 AR-1242-2

R.T.: 5.614 min  
 Delta R.T.: 0.006 min  
 Response: 9967654581  
 Conc: 44549.16 ng/ml



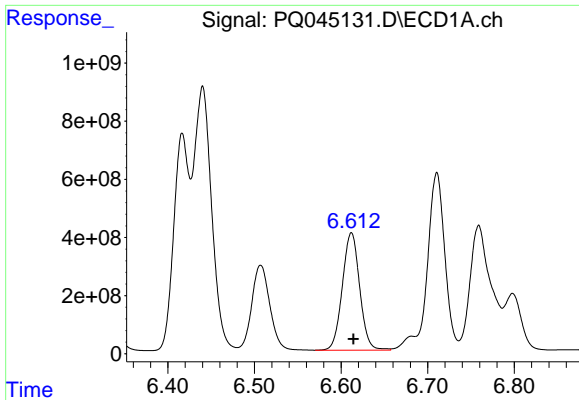
#18 AR-1242-3

R.T.: 6.507 min  
 Delta R.T.: 0.000 min  
 Response: 4196282561  
 Conc: 21149.20 ng/ml



#18 AR-1242-3

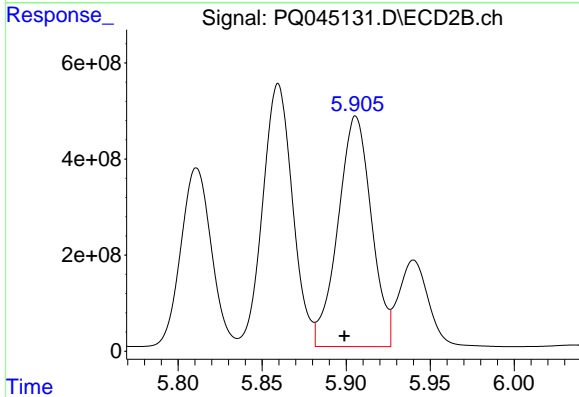
R.T.: 5.811 min  
 Delta R.T.: 0.005 min  
 Response: 4691692472  
 Conc: 42212.20 ng/ml



#19 AR-1242-4

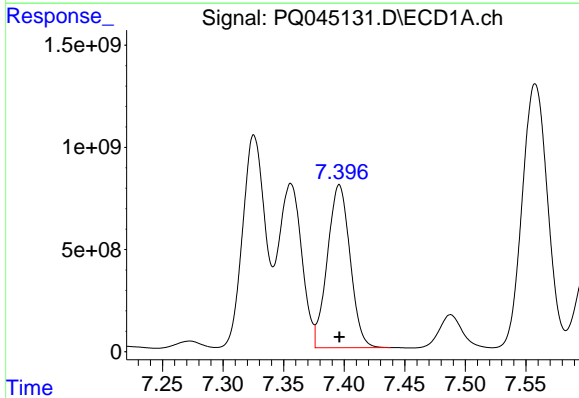
R.T.: 6.612 min  
 Delta R.T.: -0.002 min  
 Response: 5620375411  
 Conc: 34810.08 ng/ml

Instrument :  
 ECD\_Q  
 ClientSampled :  
 BFPT6



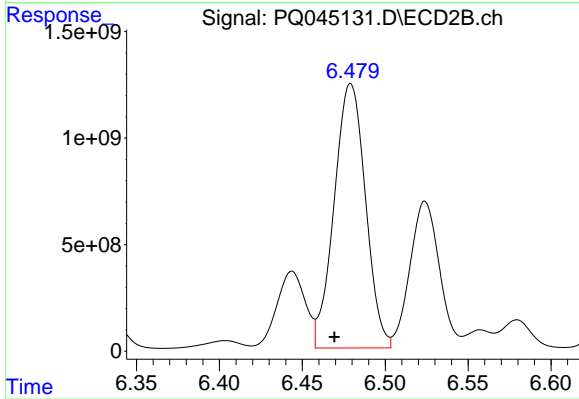
#19 AR-1242-4

R.T.: 5.906 min  
 Delta R.T.: 0.007 min  
 Response: 6640143858  
 Conc: 55684.92 ng/ml



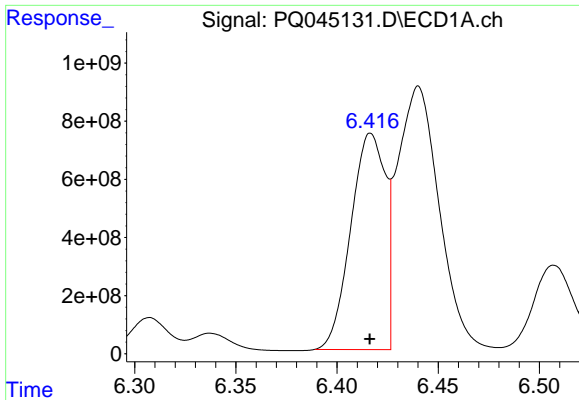
#20 AR-1242-5

R.T.: 7.396 min  
 Delta R.T.: 0.000 min  
 Response: 10404076672  
 Conc: 57492.37 ng/ml



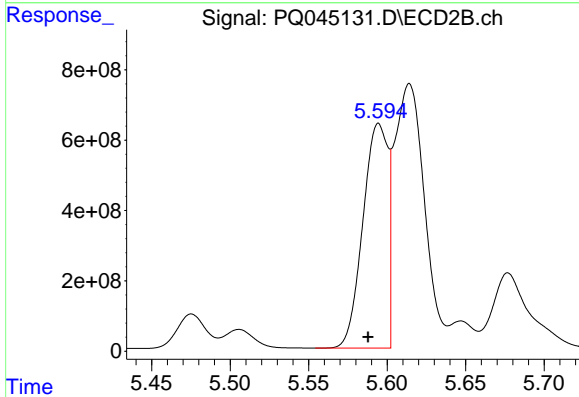
#20 AR-1242-5

R.T.: 6.479 min  
 Delta R.T.: 0.010 min  
 Response: 16314630691  
 Conc: 99356.80 ng/ml

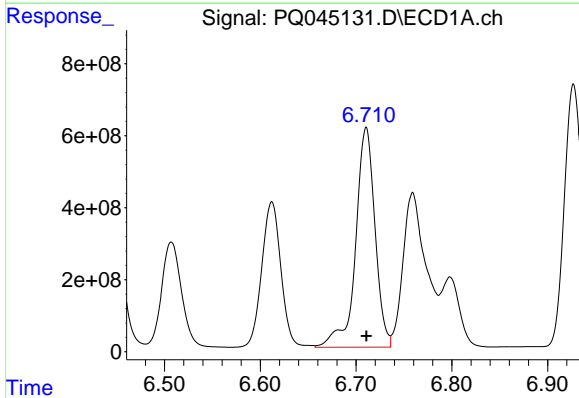


#21 AR-1248-1  
 R.T.: 6.417 min  
 Delta R.T.: 0.000 min  
 Response: 8828090399  
 Conc: 52417.22 ng/ml

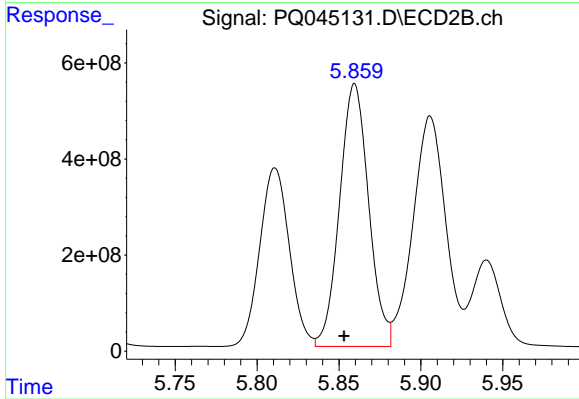
Instrument :  
 ECD\_Q  
 ClientSampled :  
 BFPT6



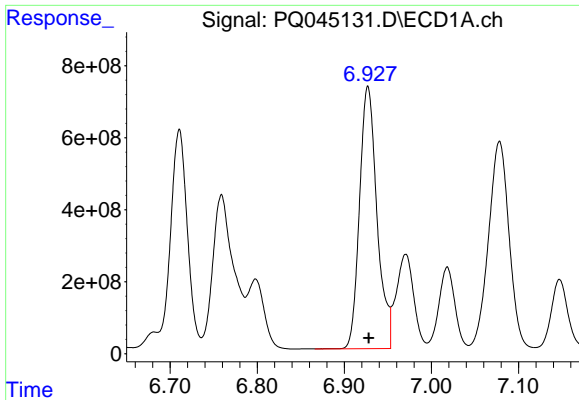
#21 AR-1248-1  
 R.T.: 5.595 min  
 Delta R.T.: 0.007 min  
 Response: 7048214262  
 Conc: 56634.24 ng/ml



#22 AR-1248-2  
 R.T.: 6.711 min  
 Delta R.T.: 0.000 min  
 Response: 8603254178  
 Conc: 35124.83 ng/ml



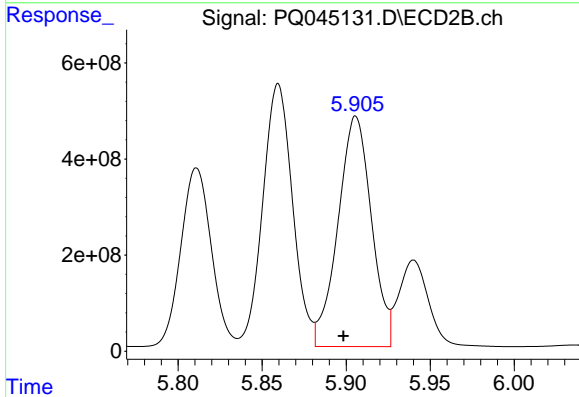
#22 AR-1248-2  
 R.T.: 5.860 min  
 Delta R.T.: 0.006 min  
 Response: 6752718614  
 Conc: 39668.45 ng/ml



#23 AR-1248-3

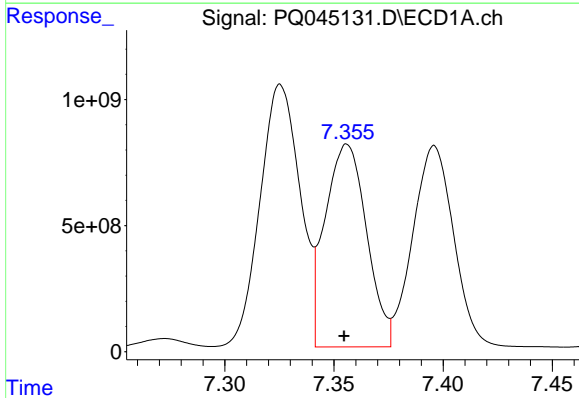
R.T.: 6.927 min  
 Delta R.T.: -0.001 min  
 Response: 10150789591  
 Conc: 37297.50 ng/ml

Instrument :  
 ECD\_Q  
 ClientSampled :  
 BFPT6



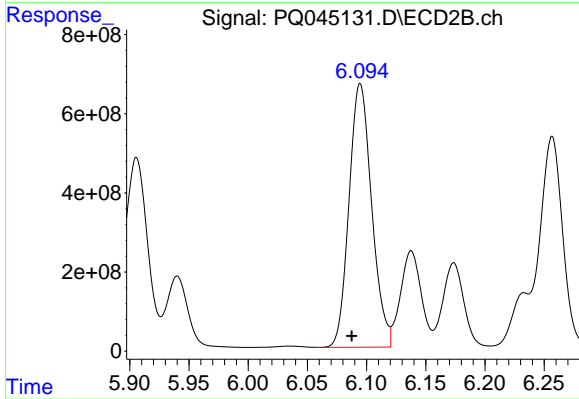
#23 AR-1248-3

R.T.: 5.906 min  
 Delta R.T.: 0.007 min  
 Response: 6640143858  
 Conc: 37128.58 ng/ml



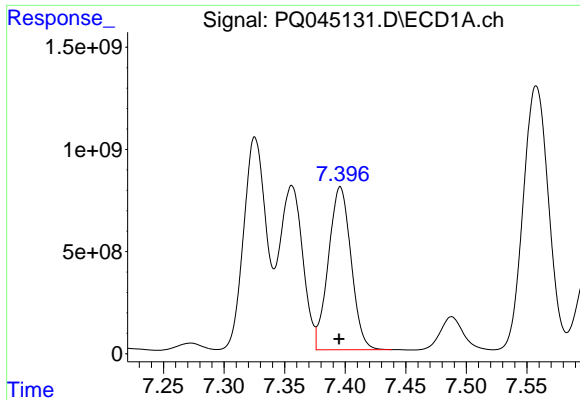
#24 AR-1248-4

R.T.: 7.356 min  
 Delta R.T.: 0.001 min  
 Response: 10632133149  
 Conc: 35104.97 ng/ml



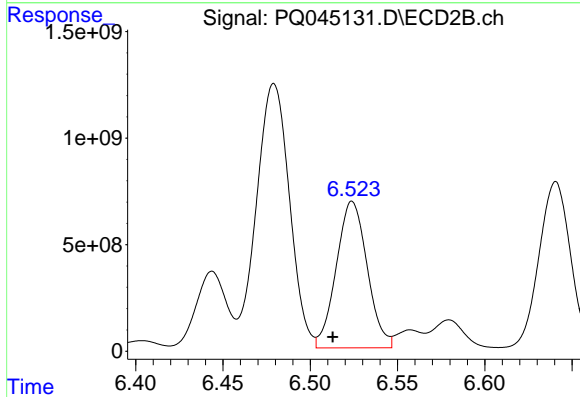
#24 AR-1248-4

R.T.: 6.095 min  
 Delta R.T.: 0.007 min  
 Response: 8867408785  
 Conc: 40737.49 ng/ml

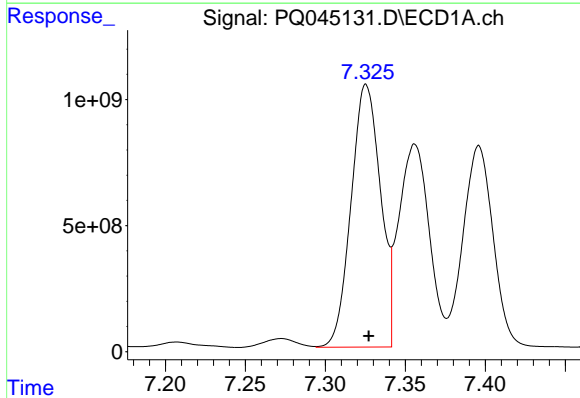


#25 AR-1248-5  
 R.T.: 7.396 min  
 Delta R.T.: 0.001 min  
 Response: 10404076672  
 Conc: 36371.76 ng/ml

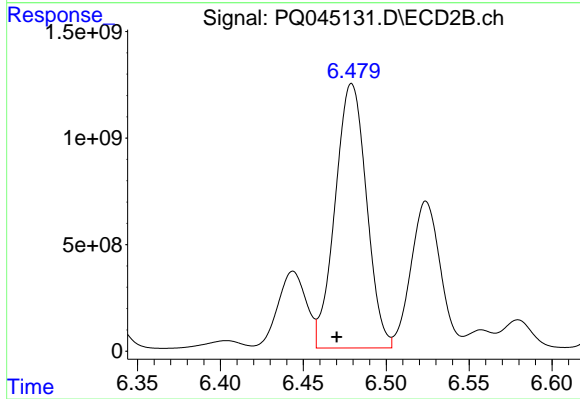
Instrument :  
 ECD\_Q  
 ClientSampled :  
 BFPT6



#25 AR-1248-5  
 R.T.: 6.524 min  
 Delta R.T.: 0.011 min  
 Response: 8488908768  
 Conc: 38068.94 ng/ml

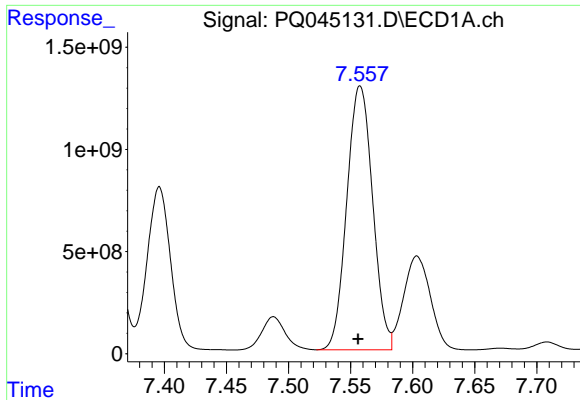


#26 AR-1254-1  
 R.T.: 7.325 min  
 Delta R.T.: -0.002 min  
 Response: 13338381312  
 Conc: 41224.25 ng/ml



#26 AR-1254-1  
 R.T.: 6.479 min  
 Delta R.T.: 0.009 min  
 Response: 16314630691  
 Conc: 44847.46 ng/ml

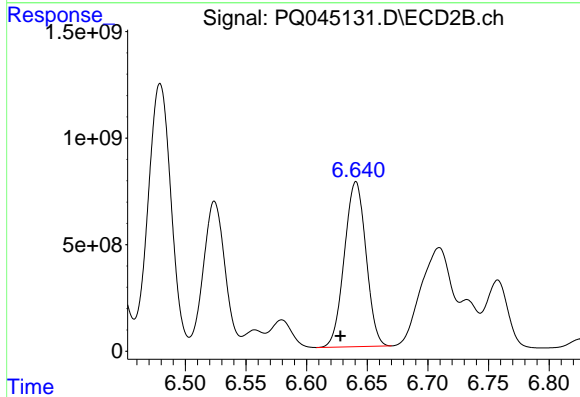




#27 AR-1254-2

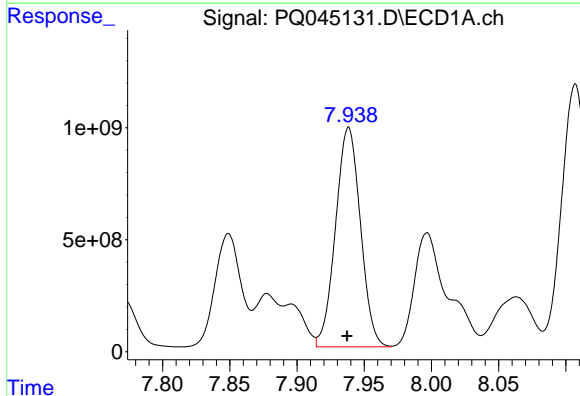
R.T.: 7.558 min  
 Delta R.T.: 0.002 min  
 Response: 18734505775  
 Conc: 37733.03 ng/ml

Instrument :  
 ECD\_Q  
 ClientSampled :  
 BFPT6



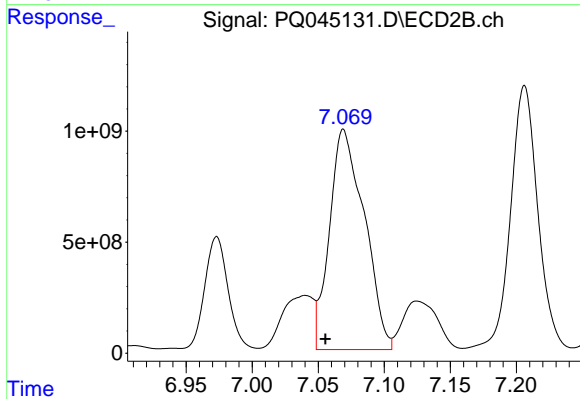
#27 AR-1254-2

R.T.: 6.641 min  
 Delta R.T.: 0.013 min  
 Response: 9612639804  
 Conc: 29845.47 ng/ml



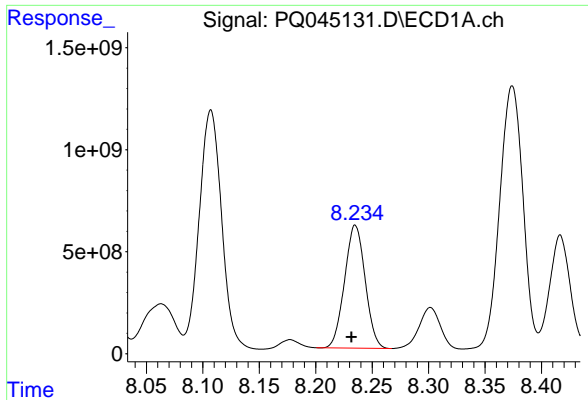
#28 AR-1254-3

R.T.: 7.938 min  
 Delta R.T.: 0.001 min  
 Response: 12621593781  
 Conc: 23713.22 ng/ml



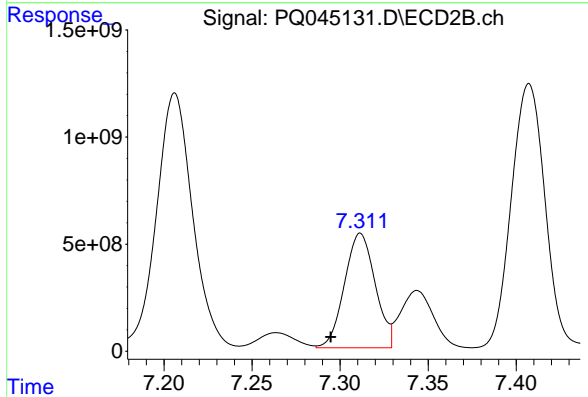
#28 AR-1254-3

R.T.: 7.069 min  
 Delta R.T.: 0.013 min  
 Response: 18210971577  
 Conc: 32830.66 ng/ml

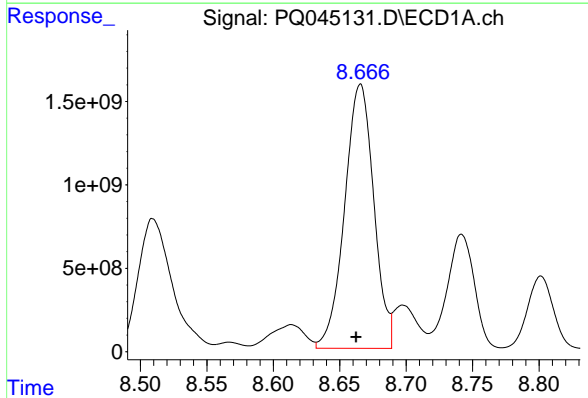


#29 AR-1254-4  
 R.T.: 8.235 min  
 Delta R.T.: 0.003 min  
 Response: 7650094990  
 Conc: 19803.97 ng/ml

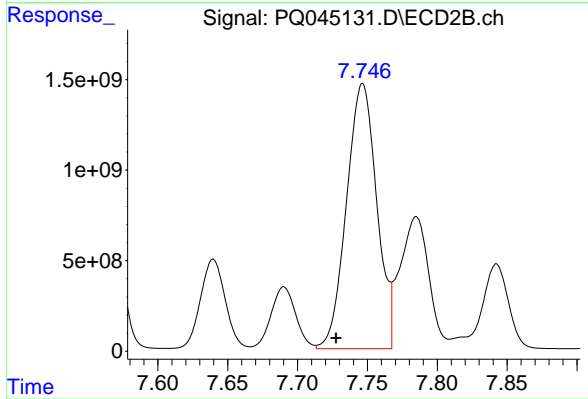
Instrument :  
 ECD\_Q  
 ClientSampled :  
 BFPT6



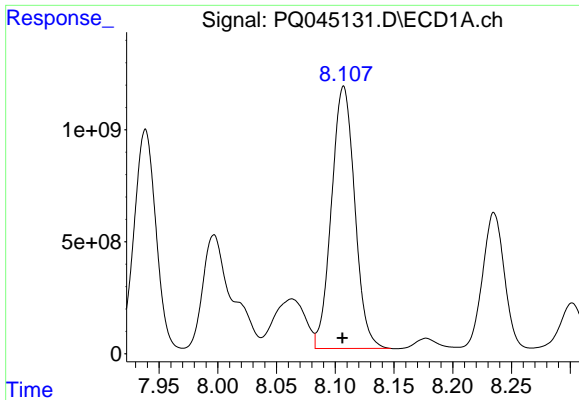
#29 AR-1254-4  
 R.T.: 7.312 min  
 Delta R.T.: 0.017 min  
 Response: 6485765680  
 Conc: 18145.87 ng/ml



#30 AR-1254-5  
 R.T.: 8.666 min  
 Delta R.T.: 0.003 min  
 Response: 24194698547  
 Conc: 56008.58 ng/ml

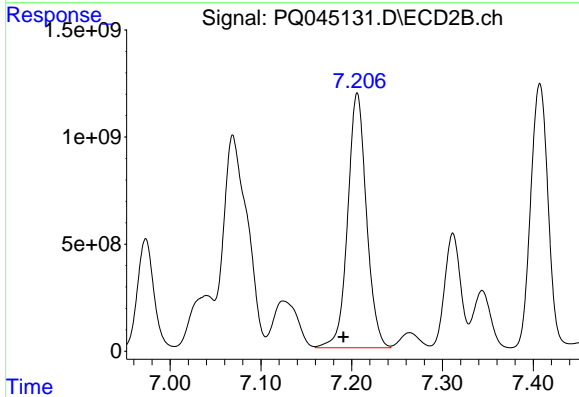


#30 AR-1254-5  
 R.T.: 7.747 min  
 Delta R.T.: 0.019 min  
 Response: 22047596046  
 Conc: 44093.18 ng/ml

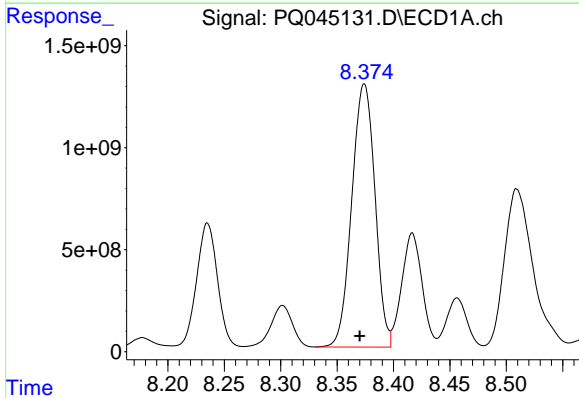


#31 AR-1260-1  
 R.T.: 8.107 min  
 Delta R.T.: 0.000 min  
 Response: 16156764226  
 Conc: 51730.67 ng/ml

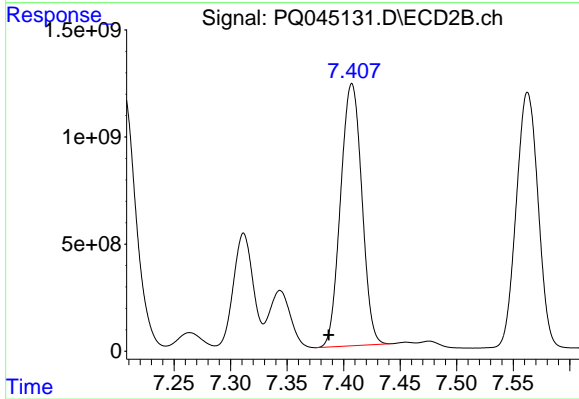
Instrument :  
 ECD\_Q  
 ClientSampleId :  
 BFPT6



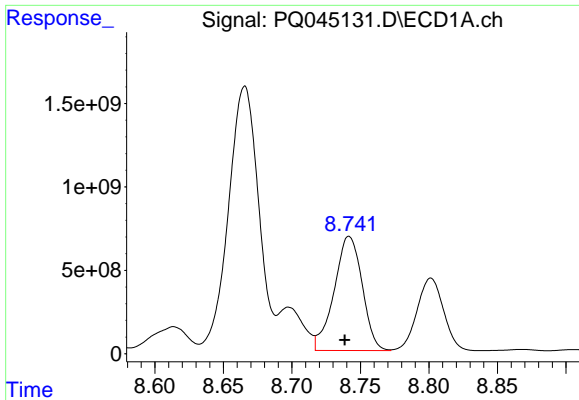
#31 AR-1260-1  
 R.T.: 7.206 min  
 Delta R.T.: 0.015 min  
 Response: 17074498477  
 Conc: 55731.10 ng/ml



#32 AR-1260-2  
 R.T.: 8.374 min  
 Delta R.T.: 0.004 min  
 Response: 18446210963  
 Conc: 45052.62 ng/ml



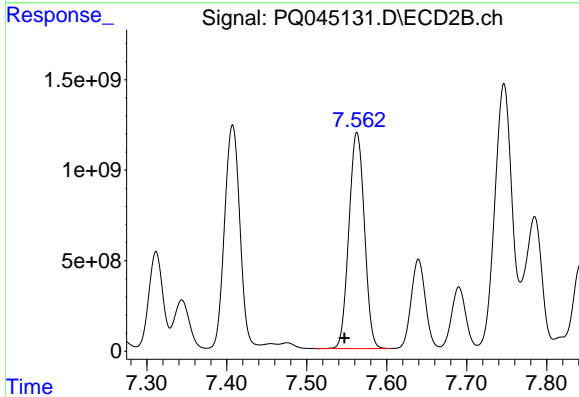
#32 AR-1260-2  
 R.T.: 7.407 min  
 Delta R.T.: 0.020 min  
 Response: 16013009494  
 Conc: 40554.13 ng/ml



#33 AR-1260-3

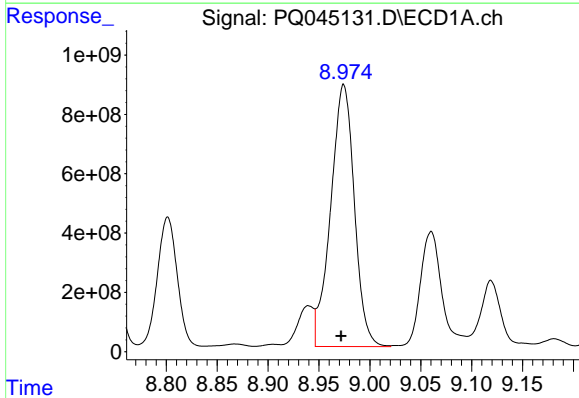
R.T.: 8.742 min  
 Delta R.T.: 0.003 min  
 Response: 9767808124  
 Conc: 29918.55 ng/ml

Instrument :  
 ECD\_Q  
 ClientSampled :  
 BFPT6



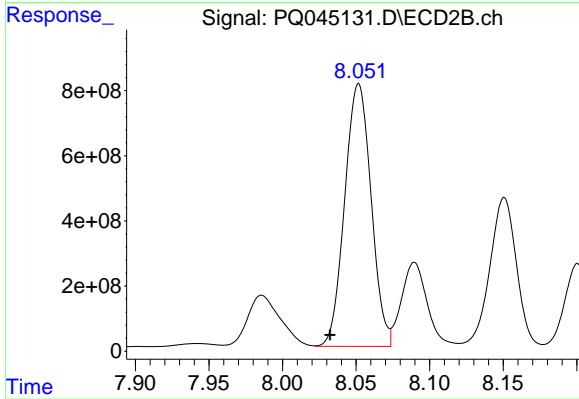
#33 AR-1260-3

R.T.: 7.563 min  
 Delta R.T.: 0.016 min  
 Response: 16104901285  
 Conc: 47009.51 ng/ml



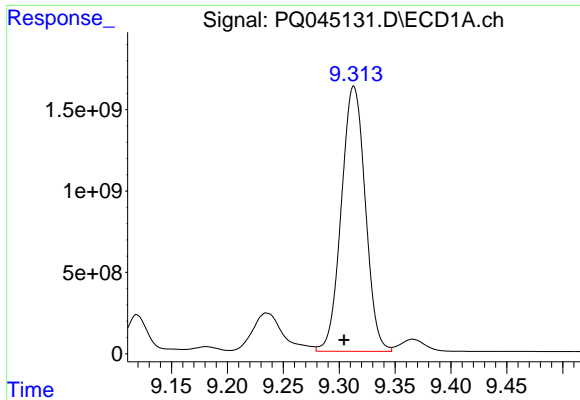
#34 AR-1260-4

R.T.: 8.974 min  
 Delta R.T.: 0.002 min  
 Response: 14328151181  
 Conc: 37679.00 ng/ml



#34 AR-1260-4

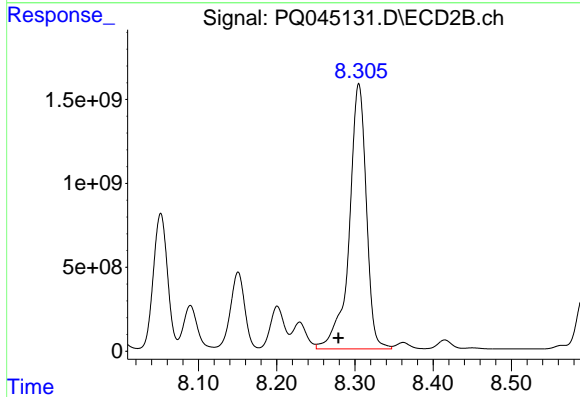
R.T.: 8.052 min  
 Delta R.T.: 0.019 min  
 Response: 10081655908  
 Conc: 32876.08 ng/ml



#35 AR-1260-5

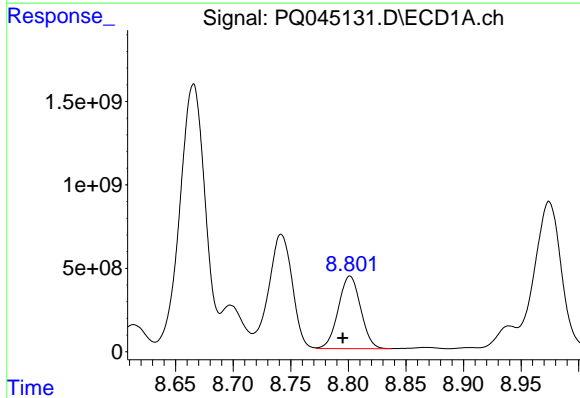
R.T.: 9.313 min  
 Delta R.T.: 0.009 min  
 Response: 24318744554  
 Conc: 31591.08 ng/ml

Instrument :  
 ECD\_Q  
 ClientSampled :  
 BFPT6



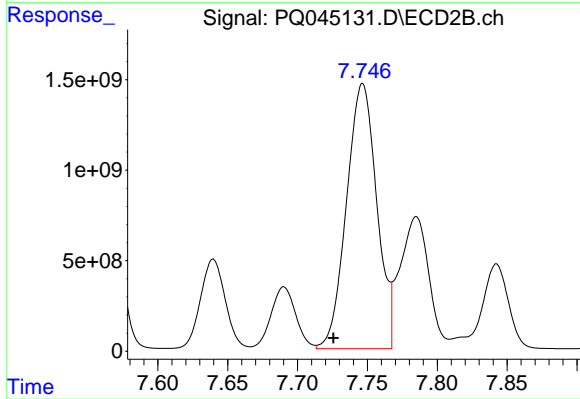
#35 AR-1260-5

R.T.: 8.305 min  
 Delta R.T.: 0.026 min  
 Response: 24025984912  
 Conc: 30698.98 ng/ml



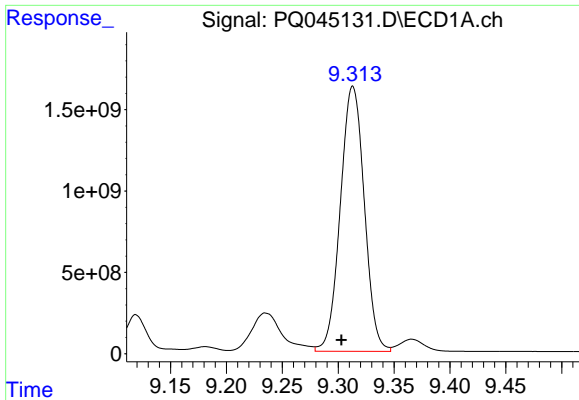
#36 AR-1262-1

R.T.: 8.801 min  
 Delta R.T.: 0.006 min  
 Response: 5848878714  
 Conc: 28039.69 ng/ml



#36 AR-1262-1

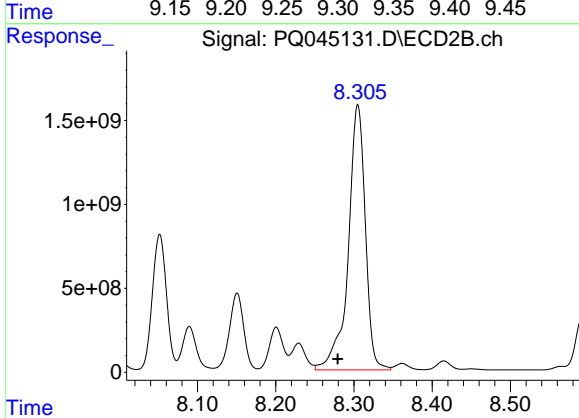
R.T.: 7.747 min  
 Delta R.T.: 0.021 min  
 Response: 22047596046  
 Conc: 87112.42 ng/ml



#37 AR-1262-2

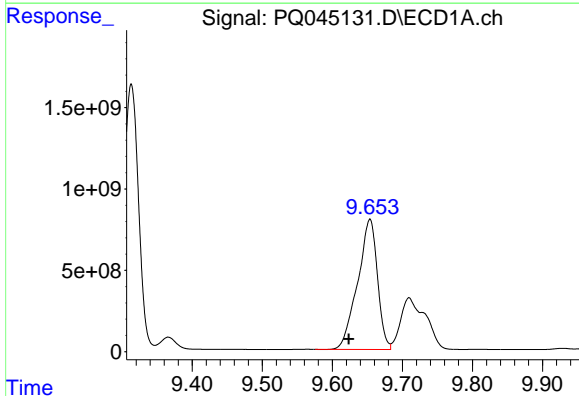
R.T.: 9.313 min  
 Delta R.T.: 0.010 min  
 Response: 24318744554  
 Conc: 26925.27 ng/ml

Instrument :  
 ECD\_Q  
 ClientSampled :  
 BFPT6



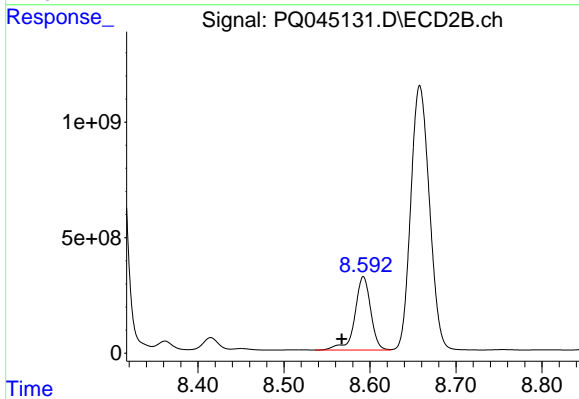
#37 AR-1262-2

R.T.: 8.305 min  
 Delta R.T.: 0.026 min  
 Response: 24025984912  
 Conc: 24349.10 ng/ml



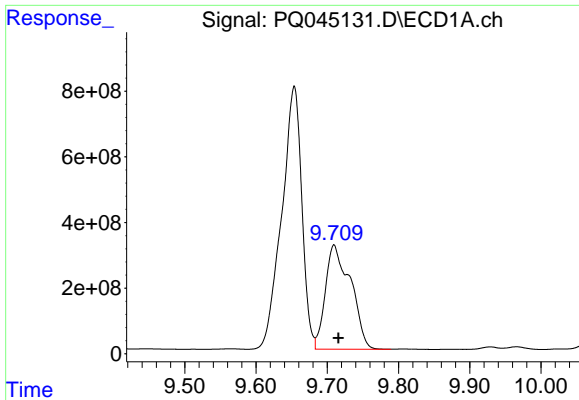
#38 AR-1262-3

R.T.: 9.654 min  
 Delta R.T.: 0.030 min  
 Response: 15682088779  
 Conc: 25713.62 ng/ml



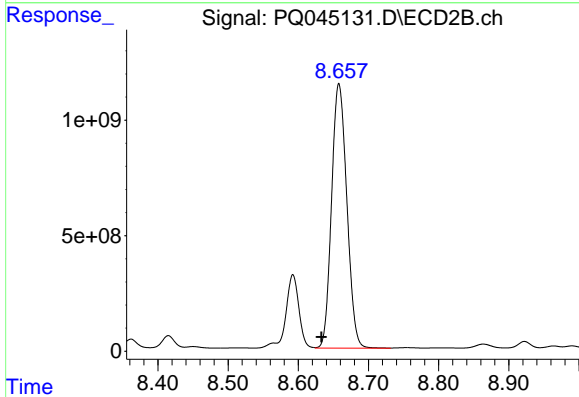
#38 AR-1262-3

R.T.: 8.592 min  
 Delta R.T.: 0.025 min  
 Response: 4084526478  
 Conc: 10600.59 ng/ml

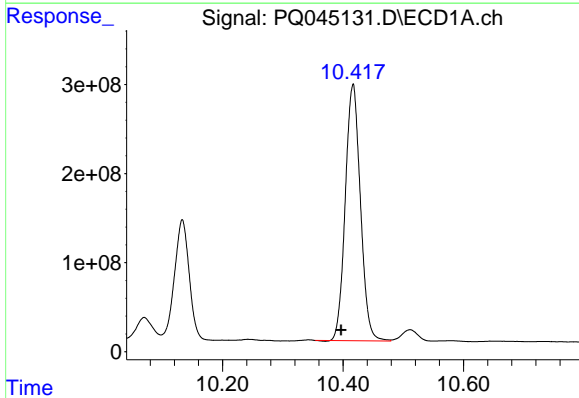


#39 AR-1262-4  
 R.T.: 9.710 min  
 Delta R.T.: -0.006 min  
 Response: 7845294076  
 Conc: 17268.10 ng/ml

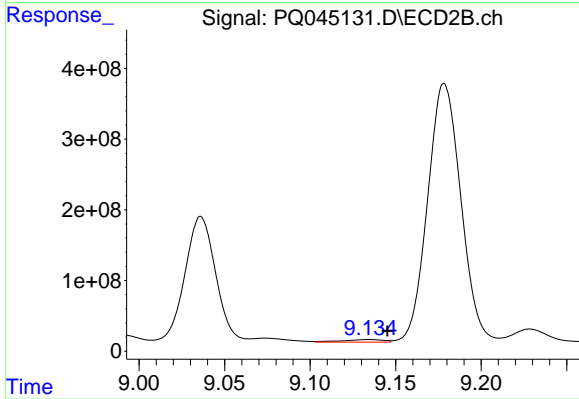
Instrument :  
 ECD\_Q  
 ClientSampleId :  
 BFPT6



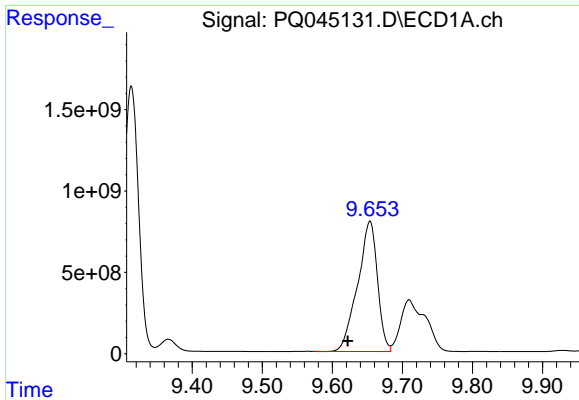
#39 AR-1262-4  
 R.T.: 8.658 min  
 Delta R.T.: 0.025 min  
 Response: 17273410978  
 Conc: 23446.82 ng/ml



#40 AR-1262-5  
 R.T.: 10.417 min  
 Delta R.T.: 0.020 min  
 Response: 5024271037  
 Conc: 16424.77 ng/ml



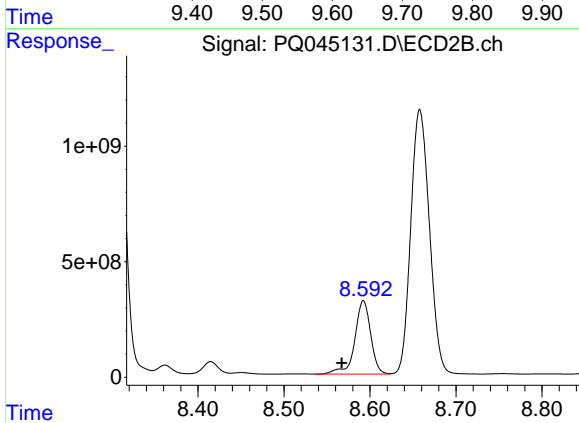
#40 AR-1262-5  
 R.T.: 9.134 min  
 Delta R.T.: -0.011 min  
 Response: 59270114  
 Conc: 170.24 ng/ml



#41 AR-1268-1

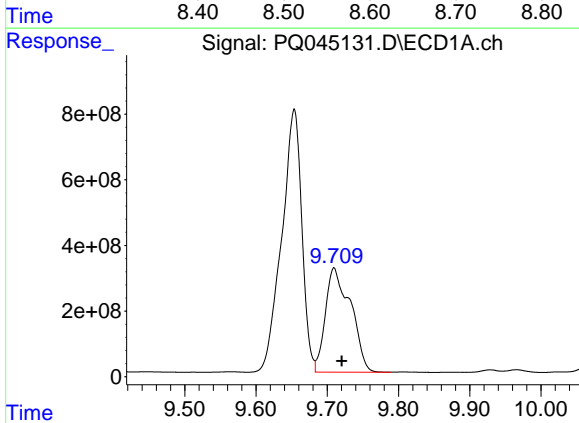
R.T.: 9.654 min  
 Delta R.T.: 0.032 min  
 Response: 15682088779  
 Conc: 14043.04 ng/ml

Instrument :  
 ECD\_Q  
 ClientSampled :  
 BFPT6



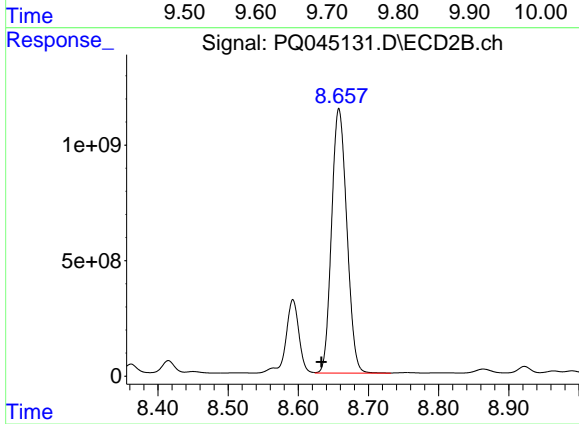
#41 AR-1268-1

R.T.: 8.592 min  
 Delta R.T.: 0.025 min  
 Response: 4084526478  
 Conc: 3396.77 ng/ml



#42 AR-1268-2

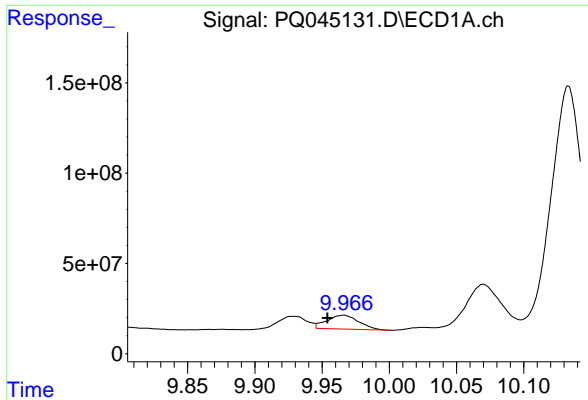
R.T.: 9.710 min  
 Delta R.T.: -0.011 min  
 Response: 7845294076  
 Conc: 7717.80 ng/ml



#42 AR-1268-2

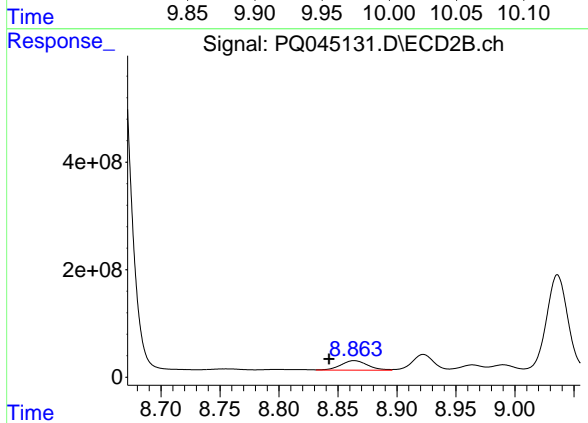
R.T.: 8.658 min  
 Delta R.T.: 0.025 min  
 Response: 17273410978  
 Conc: 15511.53 ng/ml



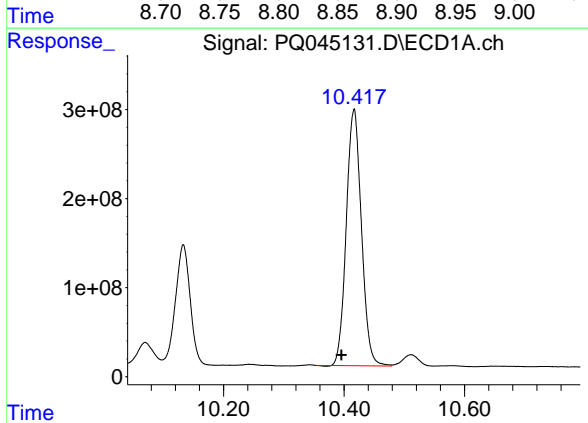


#43 AR-1268-3  
 R.T.: 9.966 min  
 Delta R.T.: 0.012 min  
 Response: 126281019  
 Conc: 144.44 ng/ml

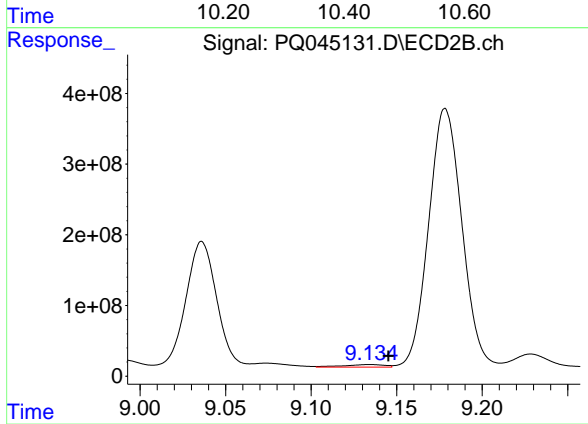
Instrument :  
 ECD\_Q  
 ClientSampled :  
 BFPT6



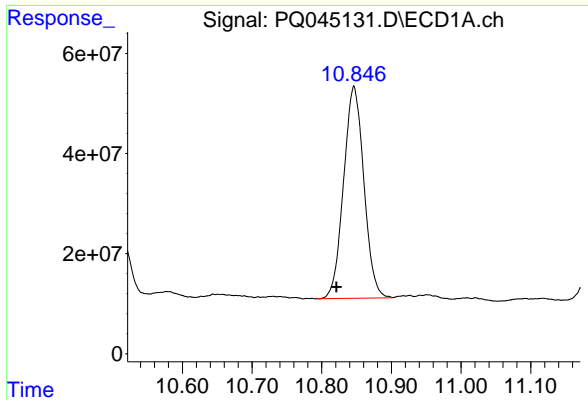
#43 AR-1268-3  
 R.T.: 8.864 min  
 Delta R.T.: 0.021 min  
 Response: 279435274  
 Conc: 300.39 ng/ml



#44 AR-1268-4  
 R.T.: 10.417 min  
 Delta R.T.: 0.021 min  
 Response: 5024271037  
 Conc: 14472.49 ng/ml



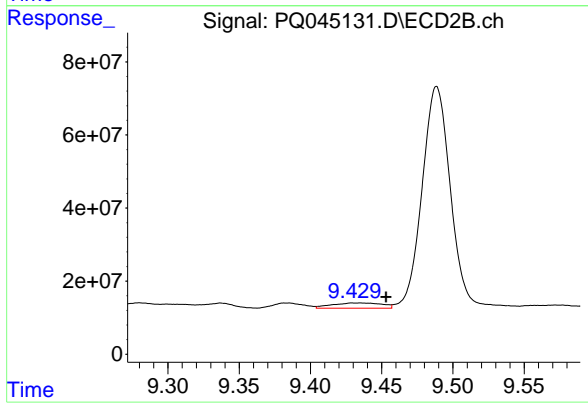
#44 AR-1268-4  
 R.T.: 9.134 min  
 Delta R.T.: -0.011 min  
 Response: 59270114  
 Conc: 147.16 ng/ml



#45 AR-1268-5

R.T.: 10.846 min  
Delta R.T.: 0.025 min  
Response: 856521684  
Conc: 328.33 ng/ml

Instrument :  
ECD\_Q  
ClientSampleId :  
BFPT6



#45 AR-1268-5

R.T.: 9.435 min  
Delta R.T.: -0.018 min  
Response: 35361678  
Conc: 11.70 ng/ml