

Data Path : Z:\pestpcbsrv\HPCHEM1\ECD_Q\Data\PQ111824\
 Data File : PQ069431.D
 Signal(s) : Signal #1: ECD1A.ch Signal #2: ECD2B.ch
 Acq On : 18 Nov 2024 18:09
 Operator : YP\AJ
 Sample : AR1221ICC800
 Misc :
 ALS Vial : 11 Sample Multiplier: 1

Instrument :
 ECD_Q
 ClientSampleId :
 AR12214032

Integration File signal 1: autoint1.e
 Integration File signal 2: autoint2.e
 Quant Time: Nov 19 00:46:51 2024
 Quant Method : Z:\pestpcbsrv\HPCHEM1\ECD_Q\Method\PQ111824CLP.M
 Quant Title : GC EXTRACTABLES
 QLast Update : Tue Nov 19 00:44:58 2024
 Response via : Initial Calibration
 Integrator: ChemStation

Volume Inj. : 1 µl
 Signal #1 Phase : ZB MR1 Signal #2 Phase: ZB MR2
 Signal #1 Info : 30Mx0.32mmx 0.5µm Signal #2 Info : 30M x 0.32mm x 0.25µm

Compound	RT#1	RT#2	Resp#1	Resp#2	ng/ml	ng/ml
System Monitoring Compounds						
1) SA Tetrachlo...	3.337	2.738	273.2E6	415.7E6	38.355	37.827
2) SA Decachlor...	8.477	7.481	203.0E6	514.2E6	74.763	75.693
Target Compounds						
8) L2 AR-1221-1	3.535	2.936	59344648	95294779	749.722	753.793
9) L2 AR-1221-2	3.614	3.012	40342325	68880281	781.027	790.480
10) L2 AR-1221-3	3.683	3.079	132.8E6	210.7E6	733.881	741.670

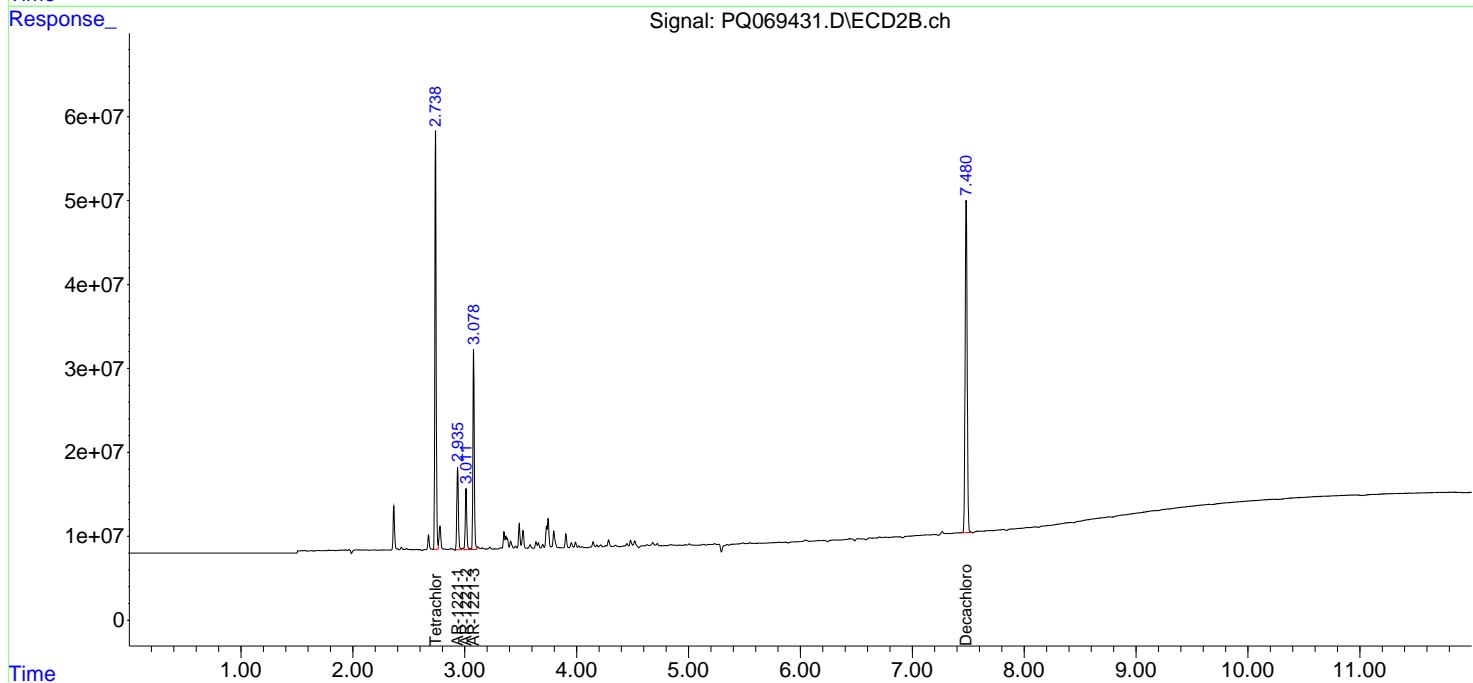
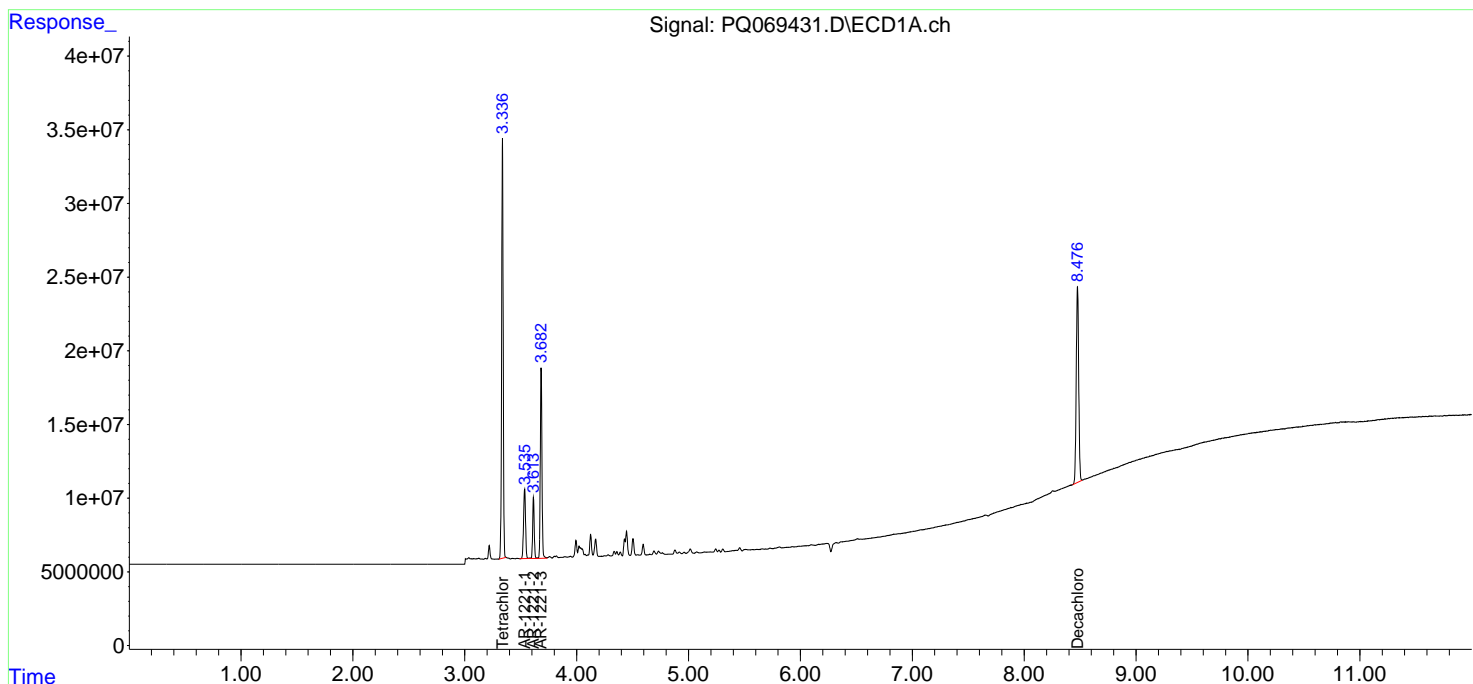
(f)=RT Delta > 1/2 Window (#)=Amounts differ by > 25% (m)=manual int.

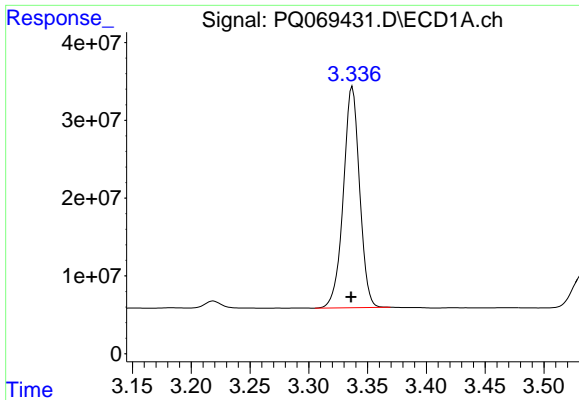
Data Path : Z:\pestpcbsrv\HPCHEM1\ECD_Q\Data\PQ111824\
 Data File : PQ069431.D
 Signal(s) : Signal #1: ECD1A.ch Signal #2: ECD2B.ch
 Acq On : 18 Nov 2024 18:09
 Operator : YP\AJ
 Sample : AR1221ICC800
 Misc :
 ALS Vial : 11 Sample Multiplier: 1

Instrument :
 ECD_Q
 ClientSampleId :
 AR12214032

Integration File signal 1: autoint1.e
 Integration File signal 2: autoint2.e
 Quant Time: Nov 19 00:46:51 2024
 Quant Method : Z:\pestpcbsrv\HPCHEM1\ECD_Q\Method\PQ111824CLP.M
 Quant Title : GC EXTRACTABLES
 QLast Update : Tue Nov 19 00:44:58 2024
 Response via : Initial Calibration
 Integrator: ChemStation

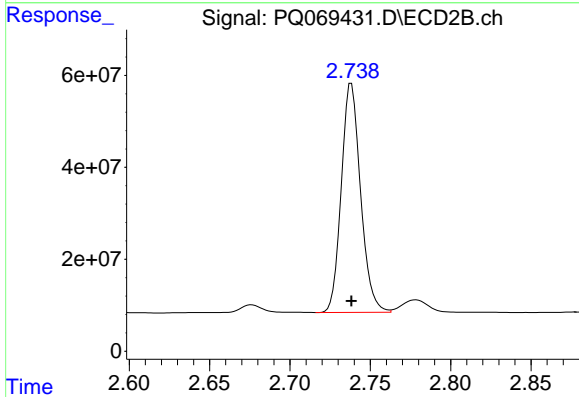
Volume Inj. : 1 µl
 Signal #1 Phase : ZB MR1 Signal #2 Phase: ZB MR2
 Signal #1 Info : 30Mx0.32mmx 0.5µm Signal #2 Info : 30M x 0.32mm x 0.25µm



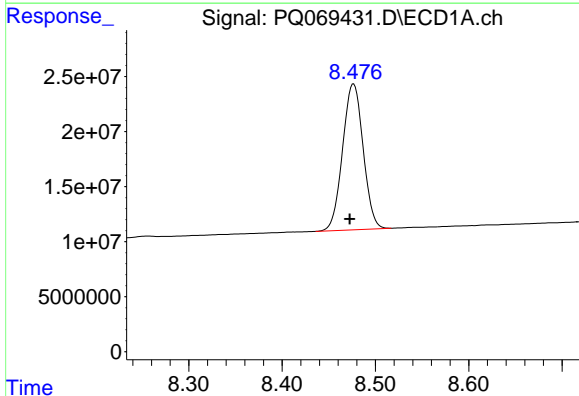


#1 Tetrachloro-m-xylene
 R.T.: 3.337 min
 Delta R.T.: 0.001 min
 Response: 273190305
 Conc: 38.36 ng/ml

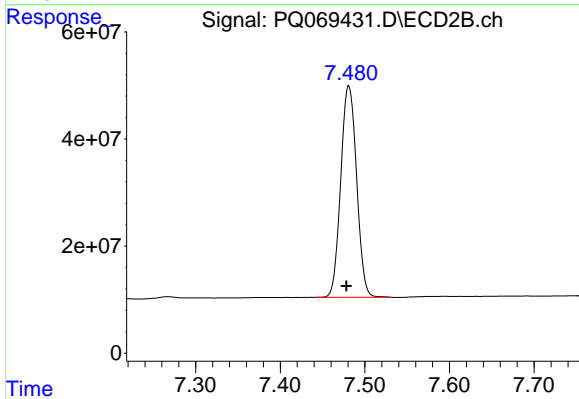
Instrument :
 ECD_Q
 ClientSampleId :
 AR12214032



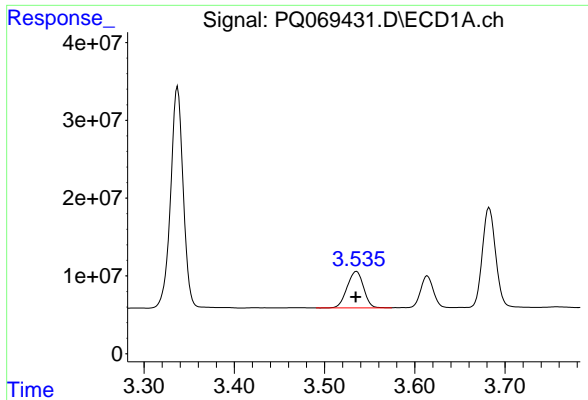
#1 Tetrachloro-m-xylene
 R.T.: 2.738 min
 Delta R.T.: 0.000 min
 Response: 415743181
 Conc: 37.83 ng/ml



#2 Decachlorobiphenyl
 R.T.: 8.477 min
 Delta R.T.: 0.004 min
 Response: 203042293
 Conc: 74.76 ng/ml



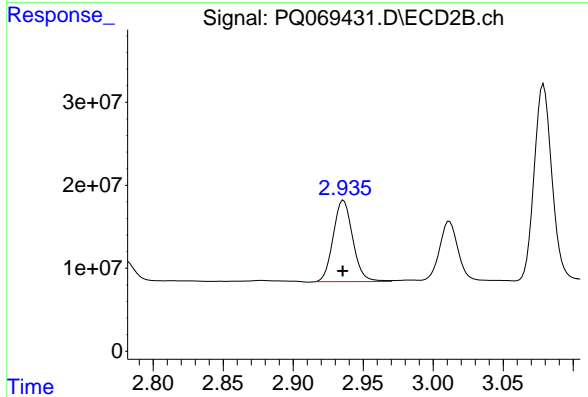
#2 Decachlorobiphenyl
 R.T.: 7.481 min
 Delta R.T.: 0.003 min
 Response: 514228455
 Conc: 75.69 ng/ml



#8 AR-1221-1

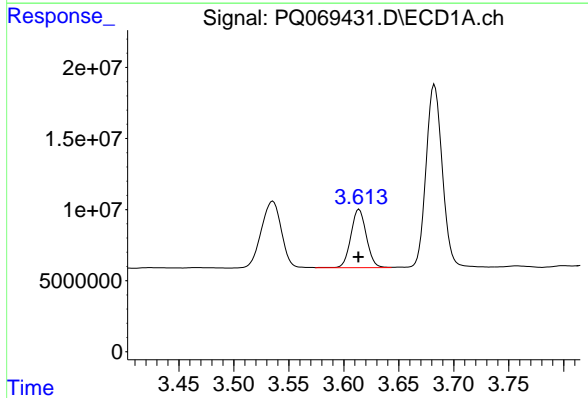
R.T.: 3.535 min
 Delta R.T.: 0.000 min
 Response: 59344648
 Conc: 749.72 ng/ml

Instrument :
 ECD_Q
 ClientSampleId :
 AR12214032



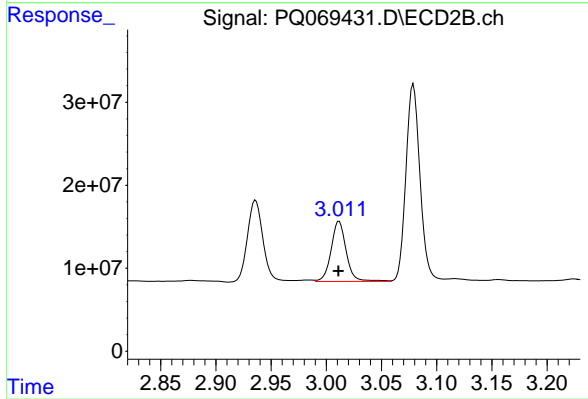
#8 AR-1221-1

R.T.: 2.936 min
 Delta R.T.: 0.000 min
 Response: 95294779
 Conc: 753.79 ng/ml



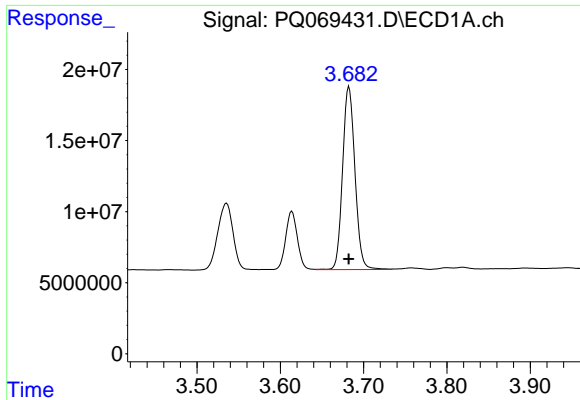
#9 AR-1221-2

R.T.: 3.614 min
 Delta R.T.: 0.000 min
 Response: 40342325
 Conc: 781.03 ng/ml



#9 AR-1221-2

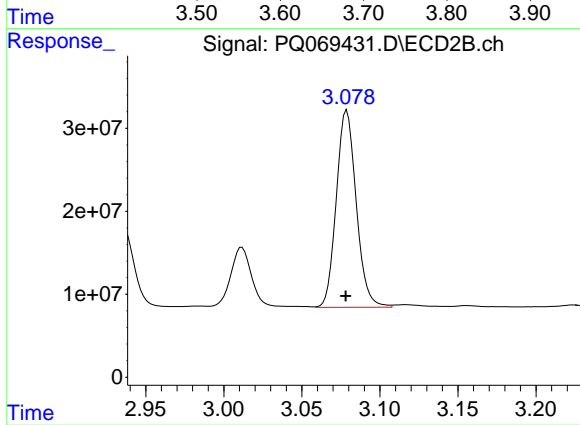
R.T.: 3.012 min
 Delta R.T.: 0.000 min
 Response: 68880281
 Conc: 790.48 ng/ml



#10 AR-1221-3

R.T.: 3.683 min
Delta R.T.: 0.000 min
Response: 132807577
Conc: 733.88 ng/ml

Instrument :
ECD_Q
ClientSampleId :
AR12214032



#10 AR-1221-3

R.T.: 3.079 min
Delta R.T.: 0.000 min
Response: 210746075
Conc: 741.67 ng/ml