

Data Path : Z:\pestpcbsrv\HPCHEM1\ECD_Q\Data\PQ111920\
 Data File : PQ051104.D
 Signal(s) : Signal #1: ECD1A.ch Signal #2: ECD2B.ch
 Acq On : 20 Nov 2020 02:21
 Operator : DD\AJ
 Sample : L4751-02MS
 Misc :
 ALS Vial : 33 Sample Multiplier: 1

Instrument :
 ECD_Q
Client Sampled :
 C0B79MS

Integration File signal 1: autoint1.e
 Integration File signal 2: autoint2.e
 Quant Time: Nov 20 03:00:09 2020
 Quant Method : Z:\pestpcbsrv\HPCHEM1\ECD_Q\Method\PQ111820CLP.M
 Quant Title : GC EXTRACTABLES
 QLast Update : Thu Nov 19 05:59:02 2020
 Response via : Initial Calibration
 Integrator: ChemStation

Volume Inj. : 1 µl
 Signal #1 Phase : ZB MR1 Signal #2 Phase: ZB MR2
 Signal #1 Info : 30Mx0.32mmx 0.5µm Signal #2 Info : 30M x 0.32mm x 0.25µm

Compound	RT#1	RT#2	Resp#1	Resp#2	ng/ml	ng/ml
System Monitoring Compounds						
1) SA Tetrachlo...	5.236	4.258	358.0E6	84153150	15.812	14.115
2) SA Decachlor...	11.432	9.611	382.4E6	108.5E6	23.303	21.250
Target Compounds						
3) L1 AR-1016-1	6.559	5.519	261.8E6	60198585	348.274	284.041
4) L1 AR-1016-2	6.583	5.540	395.1E6	80712501	363.457	270.817 #
5) L1 AR-1016-3	6.651	5.732	280.8E6	44708770	436.636	292.226 #
6) L1 AR-1016-4	6.758	5.782	286.8E6	32632602	529.481	268.982 #
7) L1 AR-1016-5	7.072	6.013	198.0E6	35109876	380.351	224.470 #
8) L2 AR-1221-1	5.495	4.514	80033890	12845333	361.907	208.791 #
9) L2 AR-1221-2	5.585	4.616	28878130	15223907	188.119	355.915 #
10) L2 AR-1221-3	5.682	4.706	239.5E6	67592747	458.248	460.884
11) L3 AR-1232-1	5.682	4.706	239.5E6	67592747	561.889	567.700
12) L3 AR-1232-2	6.265	5.540	245.4E6	80712501	1091.655	647.962 #
13) L3 AR-1232-3	6.583	5.732	395.1E6	44708770	850.749	704.520
14) L3 AR-1232-4	6.758	5.828	286.8E6	38962124	1236.752	706.774 #
15) L3 AR-1232-5	6.854	6.013	124.2E6	35109876	743.111	587.174
16) L4 AR-1242-1	6.559	5.519	261.8E6	60198585	433.110	357.892
17) L4 AR-1242-2	6.583	5.540	395.1E6	80712501	456.368	345.649
18) L4 AR-1242-3	6.651	5.732	280.8E6	44708770	543.669	369.542 #
19) L4 AR-1242-4	6.758	5.828	286.8E6	38962124	664.846	333.953 #
20) L4 AR-1242-5	7.539	6.394	61509876	41638436	131.144	263.175 #
21) L5 AR-1248-1	6.559	5.519	261.8E6	60198585	607.168	507.901
22) L5 AR-1248-2	6.854	5.782	124.2E6	32632602	206.256	198.152
23) L5 AR-1248-3	7.072	5.828	198.0E6	38962124	285.151	228.282
24) L5 AR-1248-4	7.507	6.013	68212918	35109876	84.214	170.157 #
25) L5 AR-1248-5	7.539	6.437	61509876	9021709	78.306	42.062 #
26) L6 AR-1254-1	7.469	6.394	181.9E6	41638436	212.056	116.255 #
27) L6 AR-1254-2	7.696	6.551	170.8E6	38636767	128.175	124.703
28) L6 AR-1254-3	8.082	6.991	56321323	61812438	38.891	119.619 #
29) L6 AR-1254-4	8.374	7.208	92805962	13873751	88.605	42.619 #
30) L6 AR-1254-5	8.803	7.640	440.8E6	140.9E6	399.599	310.451
31) L7 AR-1260-1	8.247	7.109	307.7E6	91718703	353.102	298.019
32) L7 AR-1260-2	8.510	7.304	443.1E6	114.5E6	432.554	295.049 #
33) L7 AR-1260-3	8.876	7.461	217.9E6	99069168	294.632	274.238
34) L7 AR-1260-4	9.120	7.945	296.4E6	73208669	351.128	233.717 #
35) L7 AR-1260-5	9.466	8.190	502.2E6	170.2E6	285.518	216.653
36) L8 AR-1262-1	8.876	7.640	217.9E6	140.9E6	171.362	605.608 #
37) L8 AR-1262-2	9.466	8.190	502.2E6	170.2E6	221.145	197.808
38) L8 AR-1262-3	9.825	8.479	306.1E6	43155257	323.723	137.698 #
39) L8 AR-1262-4	9.881	8.542	152.8E6	116.6E6	265.760	189.896 #
40) L8 AR-1262-5	10.615	9.045	98321637	32312928	122.144	116.284
41) L9 AR-1268-1	9.825	8.479	306.1E6	43155257	112.330	45.865 #
42) L9 AR-1268-2	9.881	8.542	152.8E6	116.6E6	61.354	131.215 #

Data Path : Z:\pestpcbsrv\HPCHEM1\ECD_Q\Data\PQ111920\
 Data File : PQ051104.D
 Signal(s) : Signal #1: ECD1A.ch Signal #2: ECD2B.ch
 Acq On : 20 Nov 2020 02:21
 Operator : DD\AJ
 Sample : L4751-02MS
 Misc :
 ALS Vial : 33 Sample Multiplier: 1

Instrument :
 ECD_Q
 ClientSampleId :
 C0B79MS

Integration File signal 1: autoint1.e
 Integration File signal 2: autoint2.e
 Quant Time: Nov 20 03:00:09 2020
 Quant Method : Z:\pestpcbsrv\HPCHEM1\ECD_Q\Method\PQ111820CLP.M
 Quant Title : GC EXTRACTABLES
 QLast Update : Thu Nov 19 05:59:02 2020
 Response via : Initial Calibration
 Integrator: ChemStation

Volume Inj. : 1 µl
 Signal #1 Phase : ZB MR1 Signal #2 Phase: ZB MR2
 Signal #1 Info : 30Mx0.32mmx 0.5µm Signal #2 Info : 30M x 0.32mm x 0.25µm

	Compound	RT#1	RT#2	Resp#1	Resp#2	ng/ml	ng/ml
43)	L9 AR-1268-3	0.000	8.756	0	7228523	N.D.	9.648 #
44)	L9 AR-1268-4	10.615	9.045	98321637	32312928	105.194	103.003
45)	L9 AR-1268-5	11.064	9.347	38621740	13503890	5.135	5.549

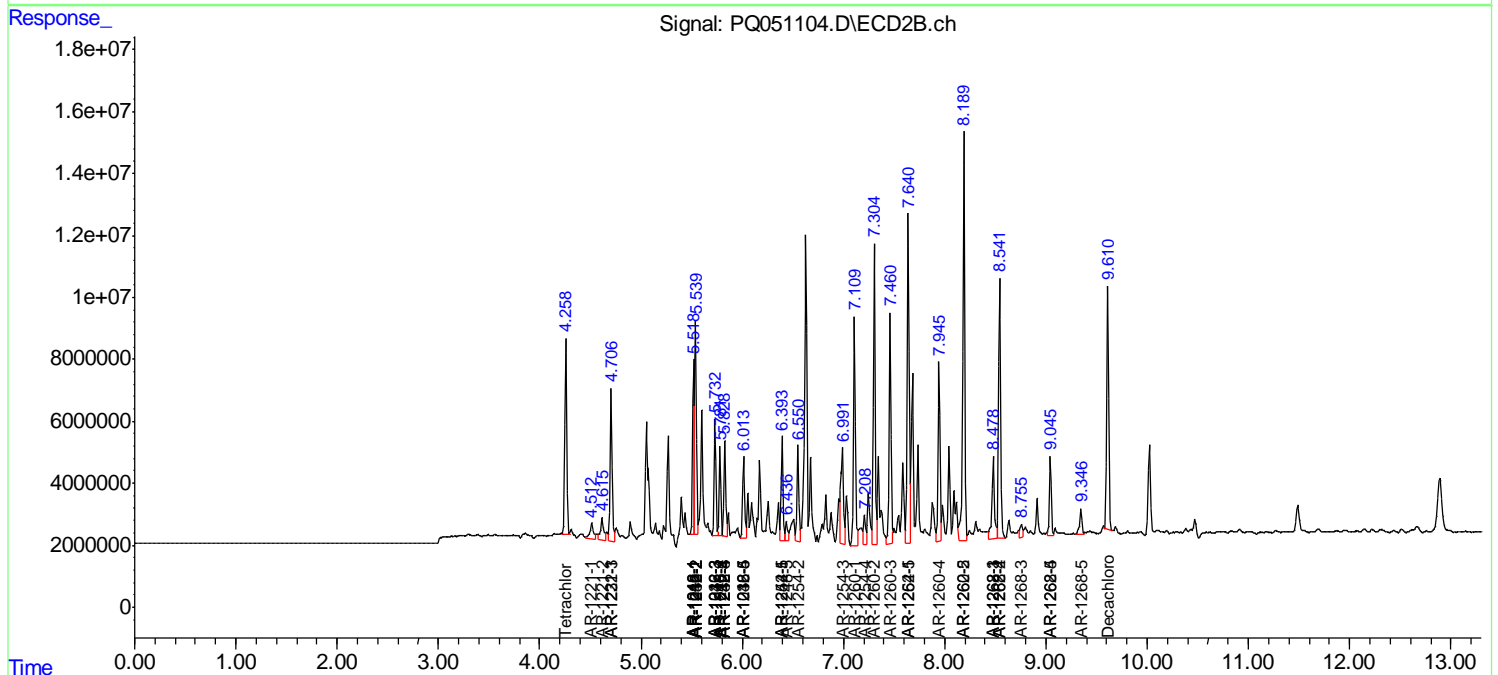
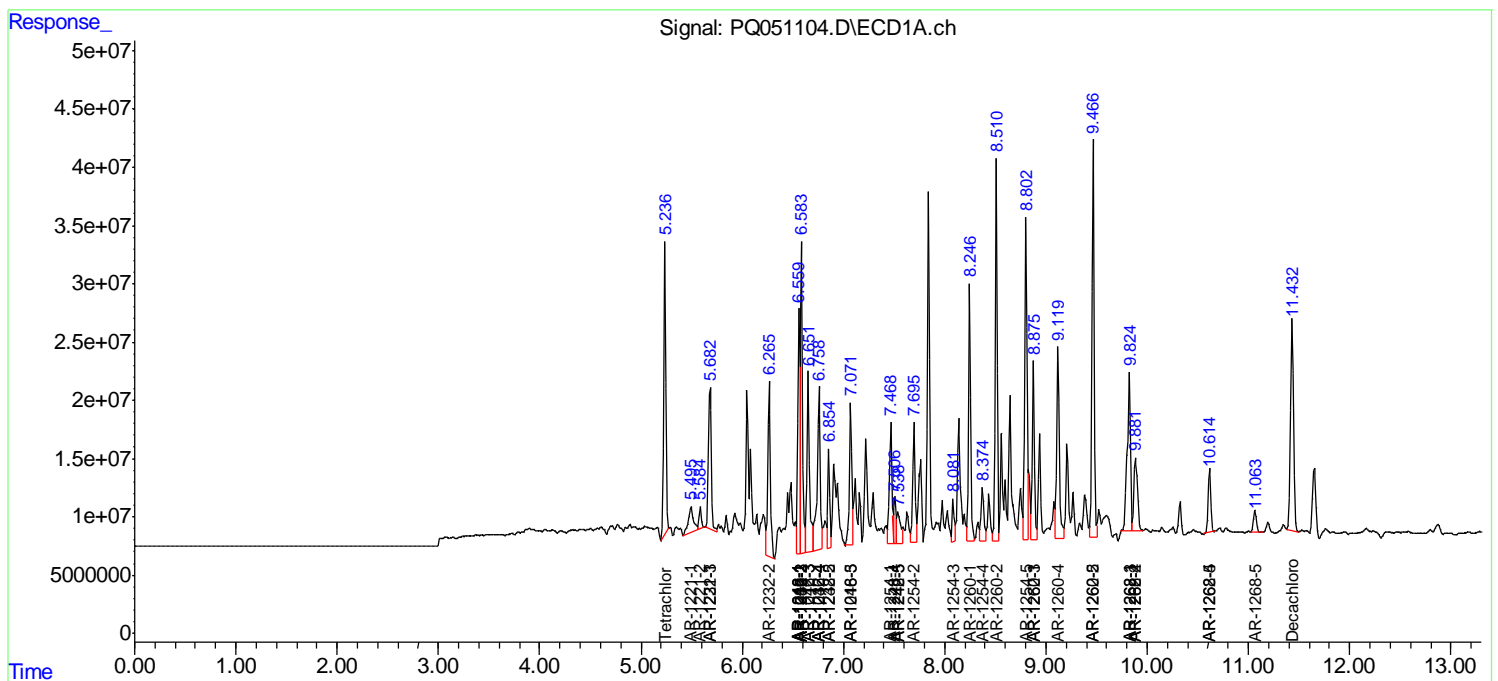
(f)=RT Delta > 1/2 Window (#)=Amounts differ by > 25% (m)=manual int.

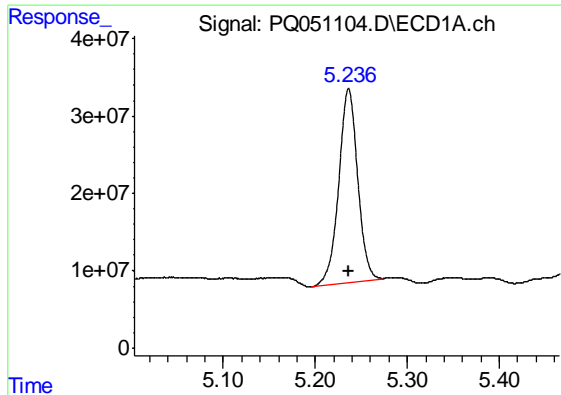
Data Path : Z:\pestpcbsrv\HPCHEM1\ECD_Q\Data\PQ111920\
 Data File : PQ051104.D
 Signal(s) : Signal #1: ECD1A.ch Signal #2: ECD2B.ch
 Acq On : 20 Nov 2020 02:21
 Operator : DD\AJ
 Sample : L4751-02MS
 Misc :
 ALS Vial : 33 Sample Multiplier: 1

Instrument :
 ECD_Q
 ClientSampled :
 C0B79MS

Integration File signal 1: autoint1.e
 Integration File signal 2: autoint2.e
 Quant Time: Nov 20 03:00:09 2020
 Quant Method : Z:\pestpcbsrv\HPCHEM1\ECD_Q\Method\PQ111820CLP.M
 Quant Title : GC EXTRACTABLES
 QLast Update : Thu Nov 19 05:59:02 2020
 Response via : Initial Calibration
 Integrator: ChemStation

Volume Inj. : 1 µl
 Signal #1 Phase : ZB MR1 Signal #2 Phase: ZB MR2
 Signal #1 Info : 30Mx0.32mmx 0.5µm Signal #2 Info : 30M x 0.32mm x 0.25µm

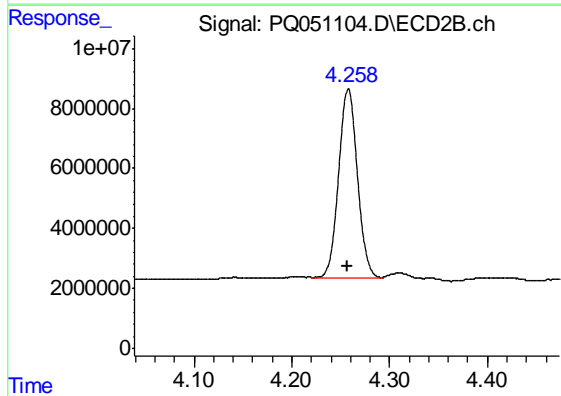




#1 Tetrachloro-m-xylene

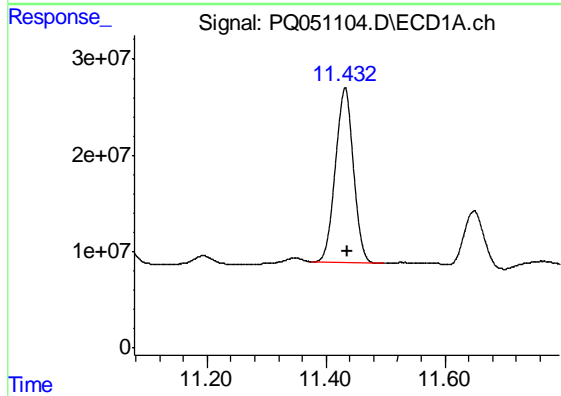
R.T.: 5.236 min
 Delta R.T.: 0.000 min
 Response: 358006704
 Conc: 15.81 ng/ml

Instrument :
 ECD_Q
 ClientSampleId :
 C0B79MS



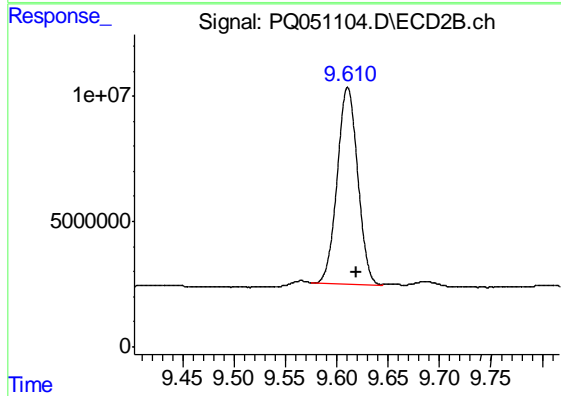
#1 Tetrachloro-m-xylene

R.T.: 4.258 min
 Delta R.T.: 0.002 min
 Response: 84153150
 Conc: 14.11 ng/ml



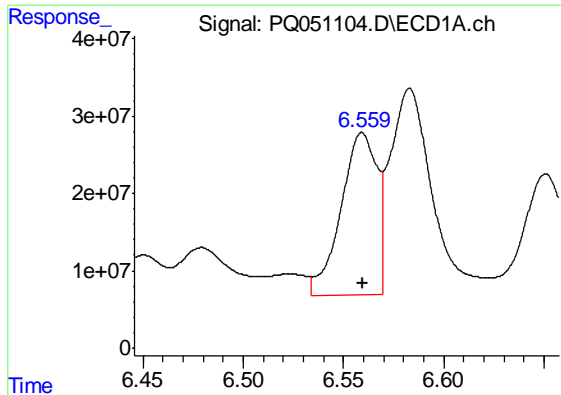
#2 Decachlorobiphenyl

R.T.: 11.432 min
 Delta R.T.: -0.003 min
 Response: 382381456
 Conc: 23.30 ng/ml



#2 Decachlorobiphenyl

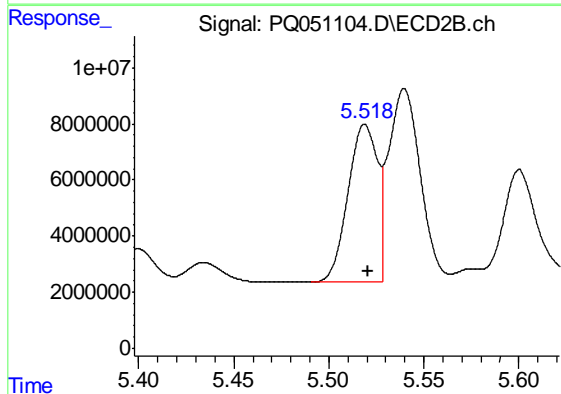
R.T.: 9.611 min
 Delta R.T.: -0.009 min
 Response: 108518626
 Conc: 21.25 ng/ml



#3 AR-1016-1

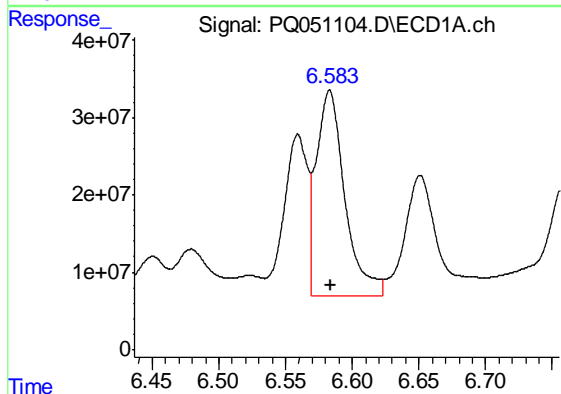
R.T.: 6.559 min
 Delta R.T.: 0.000 min
 Response: 261833885
 Conc: 348.27 ng/ml

Instrument :
 ECD_Q
 ClientSampleId :
 C0B79MS



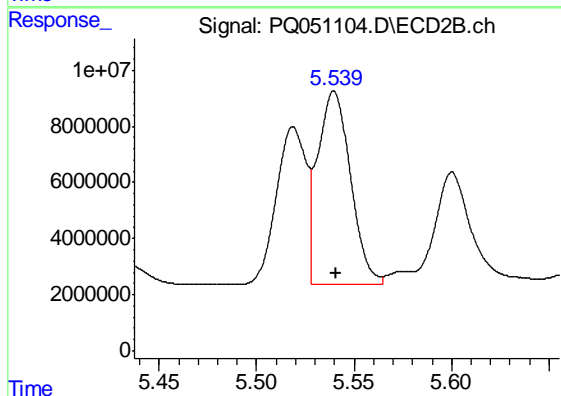
#3 AR-1016-1

R.T.: 5.519 min
 Delta R.T.: -0.002 min
 Response: 60198585
 Conc: 284.04 ng/ml



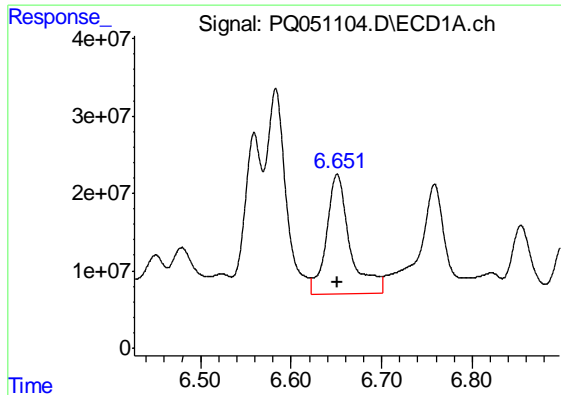
#4 AR-1016-2

R.T.: 6.583 min
 Delta R.T.: -0.001 min
 Response: 395081383
 Conc: 363.46 ng/ml



#4 AR-1016-2

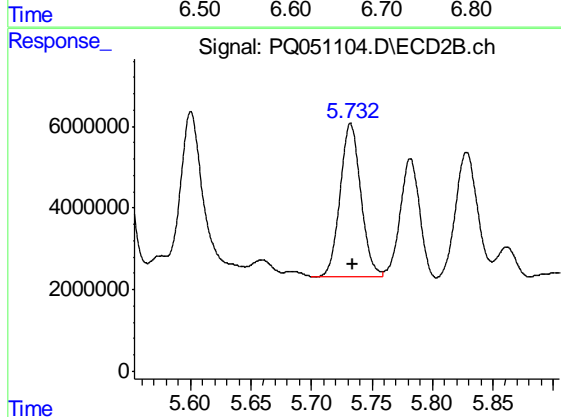
R.T.: 5.540 min
 Delta R.T.: -0.001 min
 Response: 80712501
 Conc: 270.82 ng/ml



#5 AR-1016-3

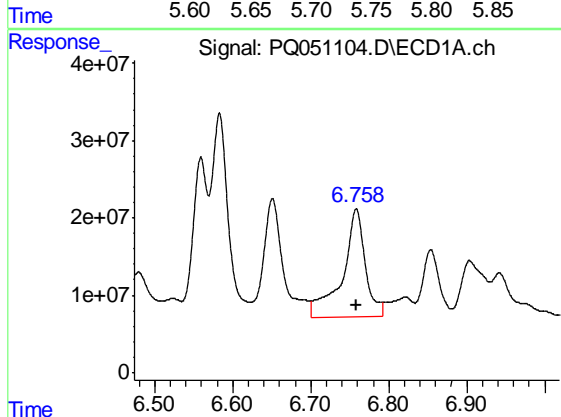
R.T.: 6.651 min
 Delta R.T.: 0.000 min
 Response: 280786477
 Conc: 436.64 ng/ml

Instrument :
 ECD_Q
 ClientSampleId :
 C0B79MS



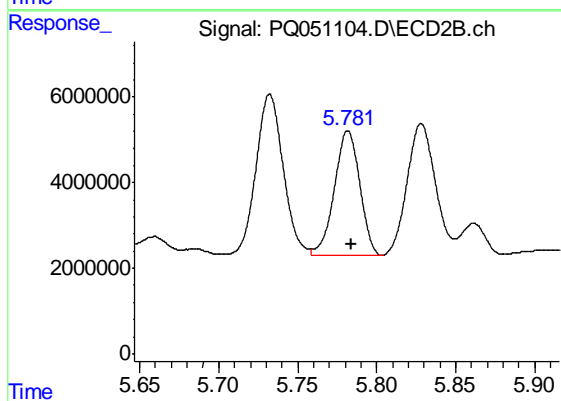
#5 AR-1016-3

R.T.: 5.732 min
 Delta R.T.: -0.002 min
 Response: 44708770
 Conc: 292.23 ng/ml



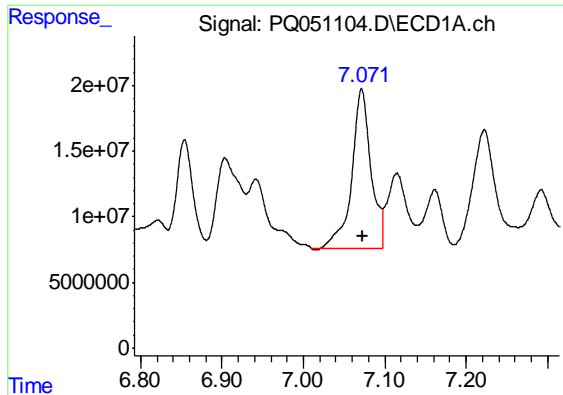
#6 AR-1016-4

R.T.: 6.758 min
 Delta R.T.: 0.000 min
 Response: 286783146
 Conc: 529.48 ng/ml



#6 AR-1016-4

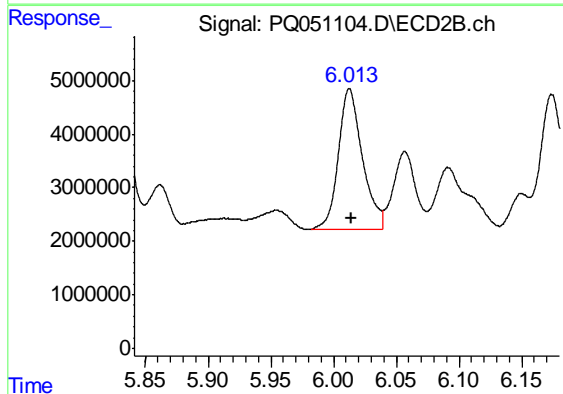
R.T.: 5.782 min
 Delta R.T.: -0.002 min
 Response: 32632602
 Conc: 268.98 ng/ml



#7 AR-1016-5

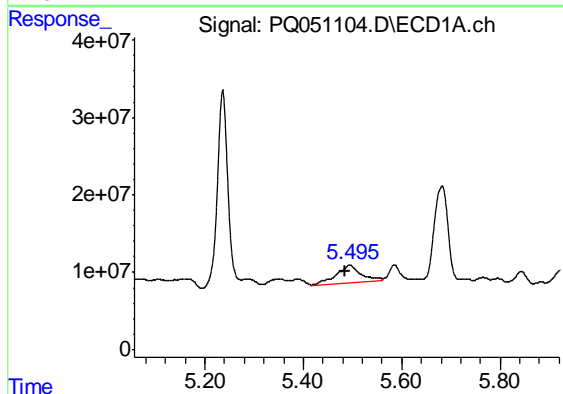
R.T.: 7.072 min
 Delta R.T.: -0.001 min
 Response: 198006228
 Conc: 380.35 ng/ml

Instrument :
 ECD_Q
 ClientSampleId :
 C0B79MS



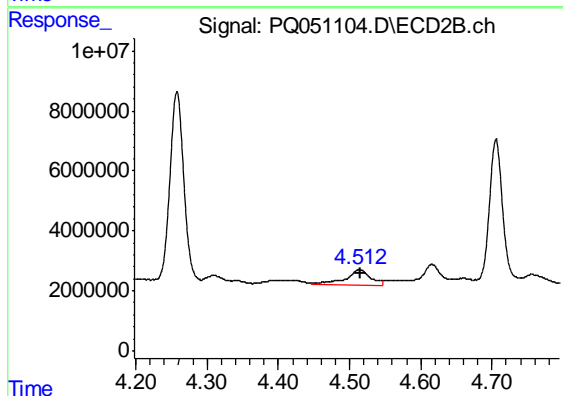
#7 AR-1016-5

R.T.: 6.013 min
 Delta R.T.: -0.002 min
 Response: 35109876
 Conc: 224.47 ng/ml



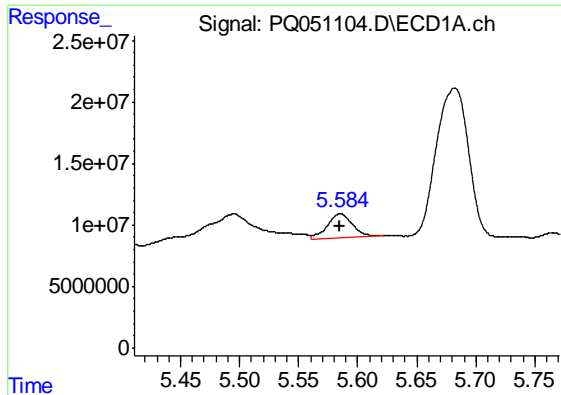
#8 AR-1221-1

R.T.: 5.495 min
 Delta R.T.: 0.009 min
 Response: 80033890
 Conc: 361.91 ng/ml



#8 AR-1221-1

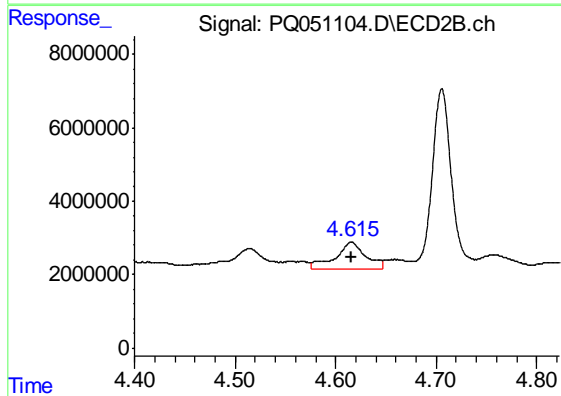
R.T.: 4.514 min
 Delta R.T.: -0.001 min
 Response: 12845333
 Conc: 208.79 ng/ml



#9 AR-1221-2

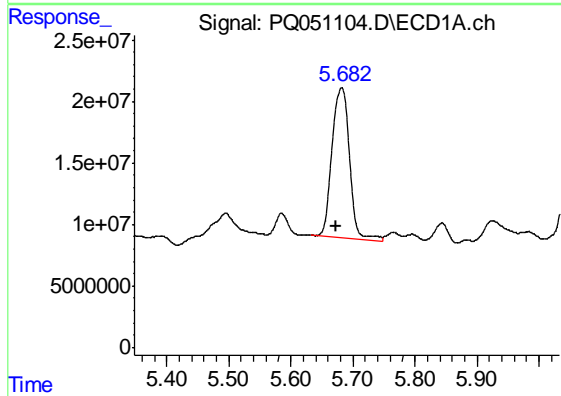
R.T.: 5.585 min
 Delta R.T.: 0.000 min
 Response: 28878130
 Conc: 188.12 ng/ml

Instrument :
 ECD_Q
 ClientSampled :
 C0B79MS



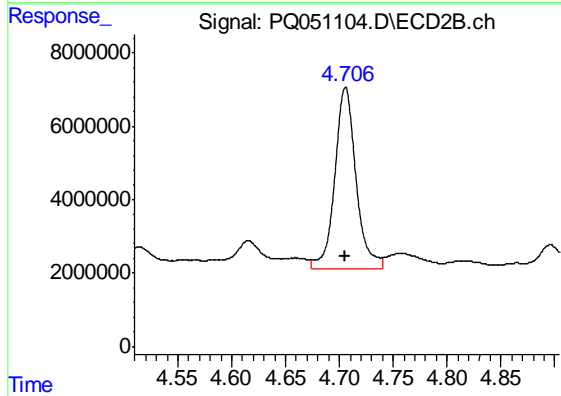
#9 AR-1221-2

R.T.: 4.616 min
 Delta R.T.: 0.000 min
 Response: 15223907
 Conc: 355.92 ng/ml



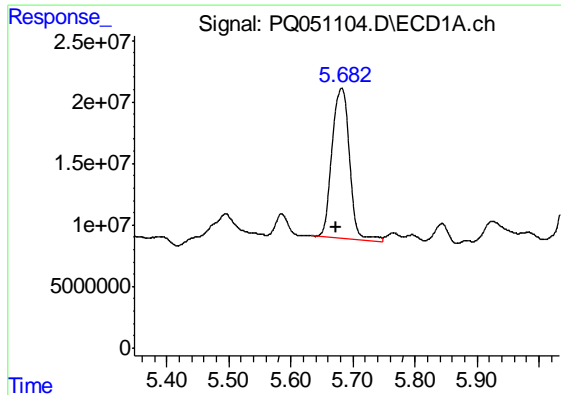
#10 AR-1221-3

R.T.: 5.682 min
 Delta R.T.: 0.009 min
 Response: 239492285
 Conc: 458.25 ng/ml



#10 AR-1221-3

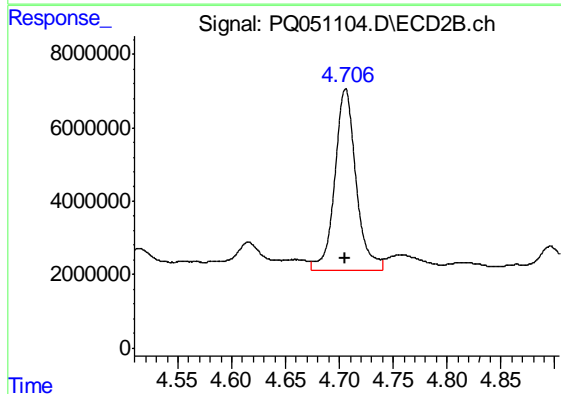
R.T.: 4.706 min
 Delta R.T.: 0.000 min
 Response: 67592747
 Conc: 460.88 ng/ml



#11 AR-1232-1

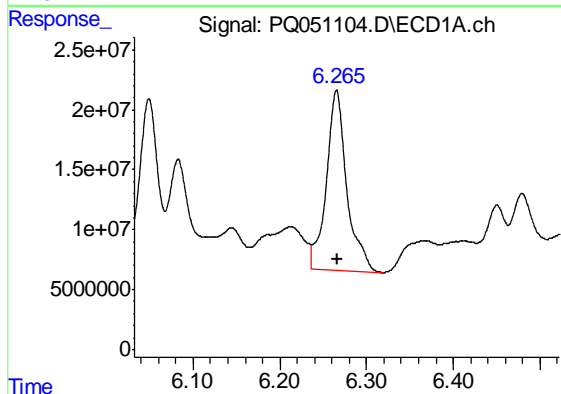
R.T.: 5.682 min
 Delta R.T.: 0.009 min
 Response: 239492285
 Conc: 561.89 ng/ml

Instrument :
 ECD_Q
 ClientSampleId :
 C0B79MS



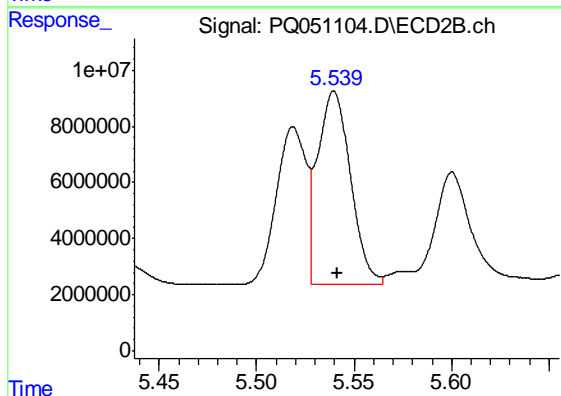
#11 AR-1232-1

R.T.: 4.706 min
 Delta R.T.: 0.000 min
 Response: 67592747
 Conc: 567.70 ng/ml



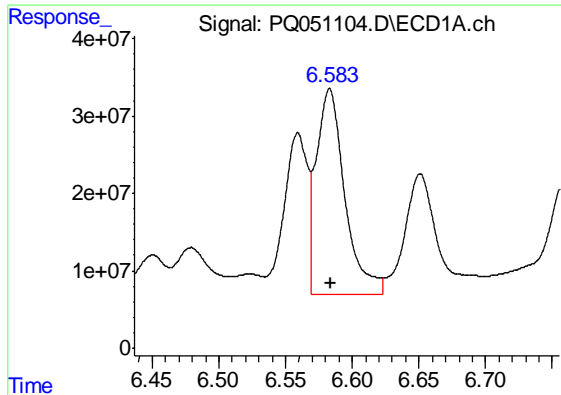
#12 AR-1232-2

R.T.: 6.265 min
 Delta R.T.: 0.000 min
 Response: 245351458
 Conc: 1091.66 ng/ml



#12 AR-1232-2

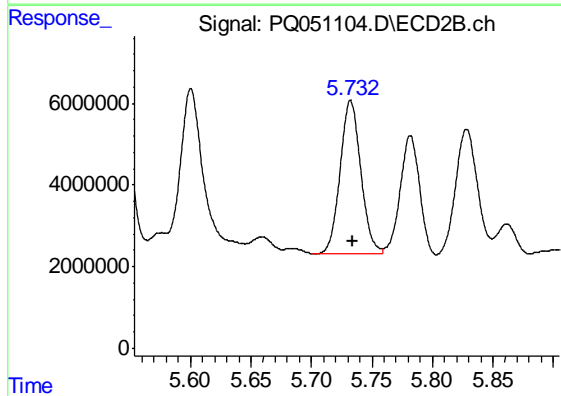
R.T.: 5.540 min
 Delta R.T.: -0.002 min
 Response: 80712501
 Conc: 647.96 ng/ml



#13 AR-1232-3

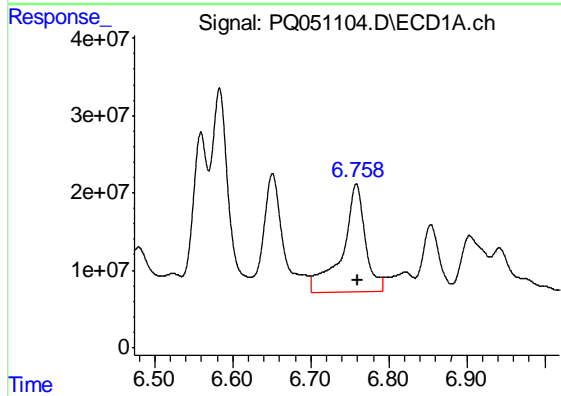
R.T.: 6.583 min
Delta R.T.: -0.001 min
Response: 395081383
Conc: 850.75 ng/ml

Instrument :
ECD_Q
ClientSampled :
C0B79MS



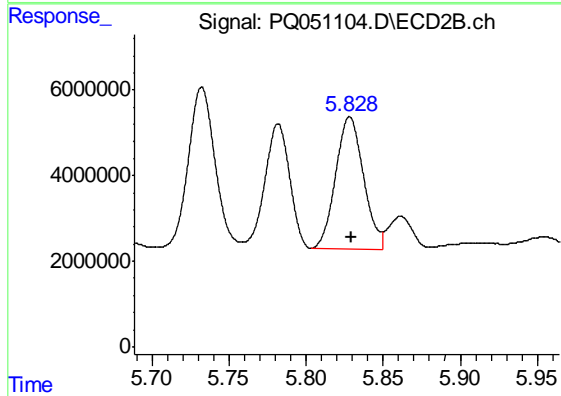
#13 AR-1232-3

R.T.: 5.732 min
Delta R.T.: -0.001 min
Response: 44708770
Conc: 704.52 ng/ml



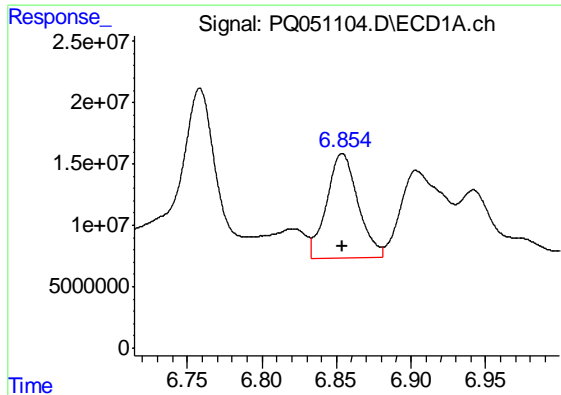
#14 AR-1232-4

R.T.: 6.758 min
Delta R.T.: -0.001 min
Response: 286783146
Conc: 1236.75 ng/ml



#14 AR-1232-4

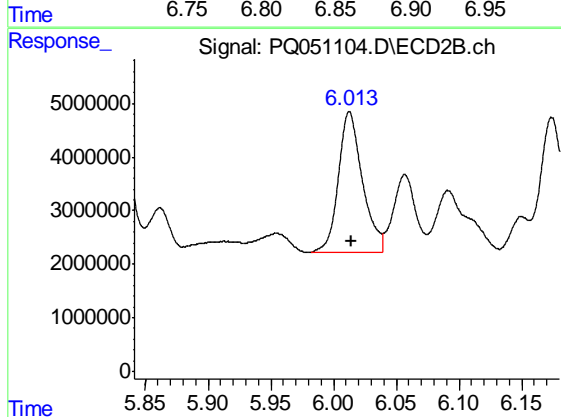
R.T.: 5.828 min
Delta R.T.: 0.000 min
Response: 38962124
Conc: 706.77 ng/ml



#15 AR-1232-5

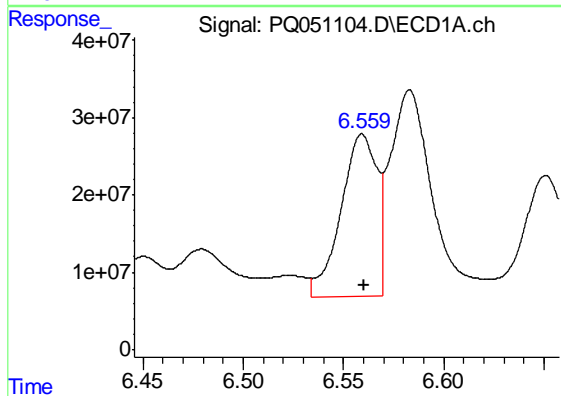
R.T.: 6.854 min
 Delta R.T.: 0.000 min
 Response: 124213283
 Conc: 743.11 ng/ml

Instrument :
 ECD_Q
 ClientSampleId :
 C0B79MS



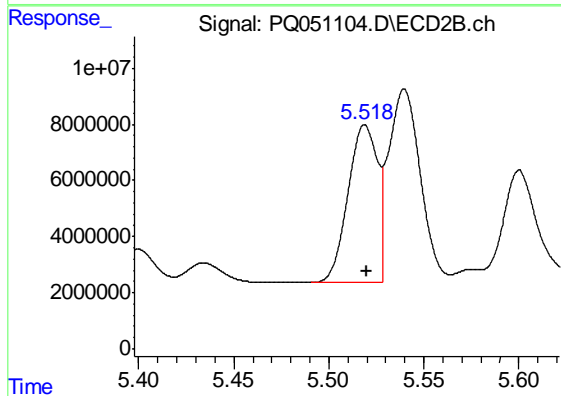
#15 AR-1232-5

R.T.: 6.013 min
 Delta R.T.: -0.002 min
 Response: 35109876
 Conc: 587.17 ng/ml



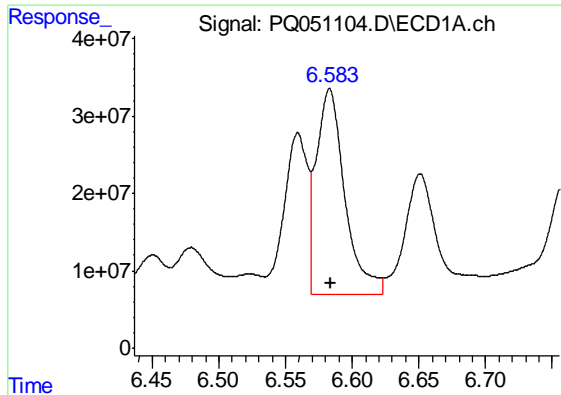
#16 AR-1242-1

R.T.: 6.559 min
 Delta R.T.: -0.001 min
 Response: 261833885
 Conc: 433.11 ng/ml



#16 AR-1242-1

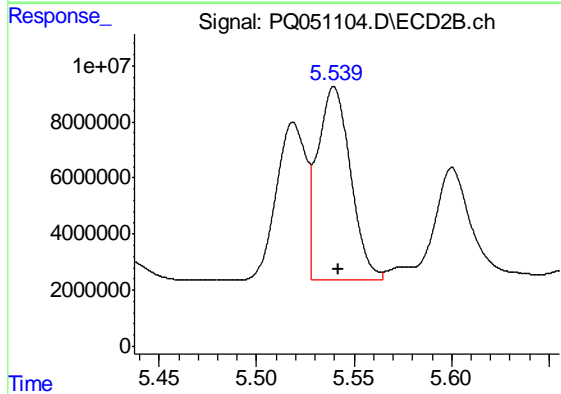
R.T.: 5.519 min
 Delta R.T.: -0.001 min
 Response: 60198585
 Conc: 357.89 ng/ml



#17 AR-1242-2

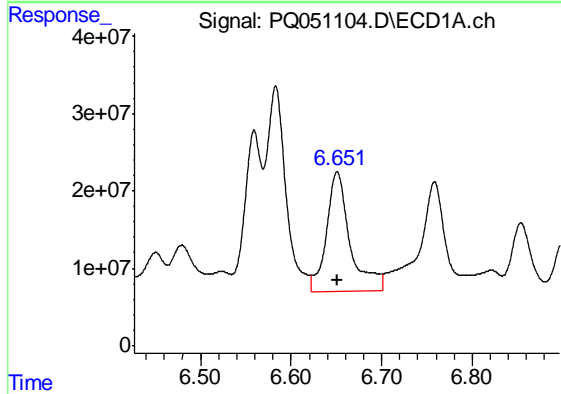
R.T.: 6.583 min
 Delta R.T.: -0.001 min
 Response: 395081383
 Conc: 456.37 ng/ml

Instrument :
 ECD_Q
 ClientSampleId :
 C0B79MS



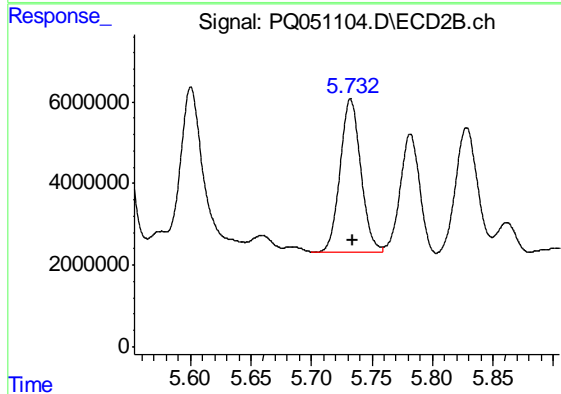
#17 AR-1242-2

R.T.: 5.540 min
 Delta R.T.: -0.002 min
 Response: 80712501
 Conc: 345.65 ng/ml



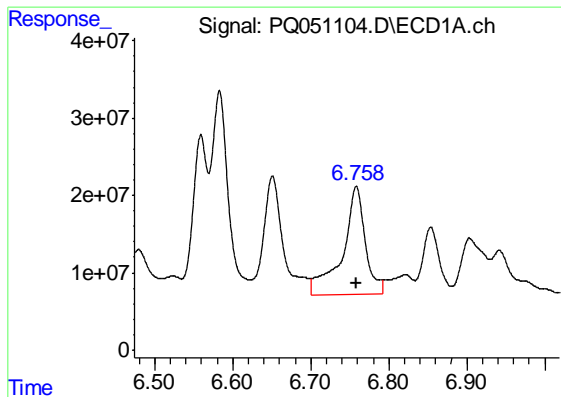
#18 AR-1242-3

R.T.: 6.651 min
 Delta R.T.: 0.000 min
 Response: 280786477
 Conc: 543.67 ng/ml



#18 AR-1242-3

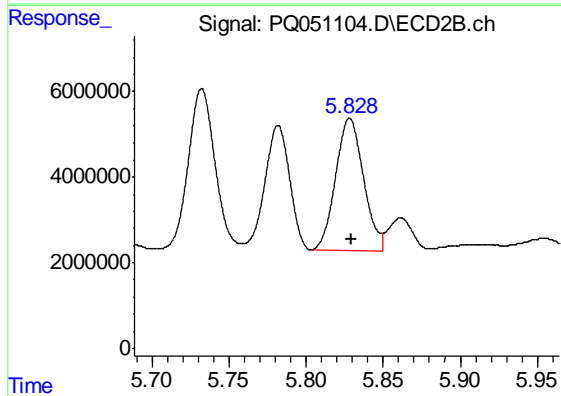
R.T.: 5.732 min
 Delta R.T.: -0.002 min
 Response: 44708770
 Conc: 369.54 ng/ml



#19 AR-1242-4

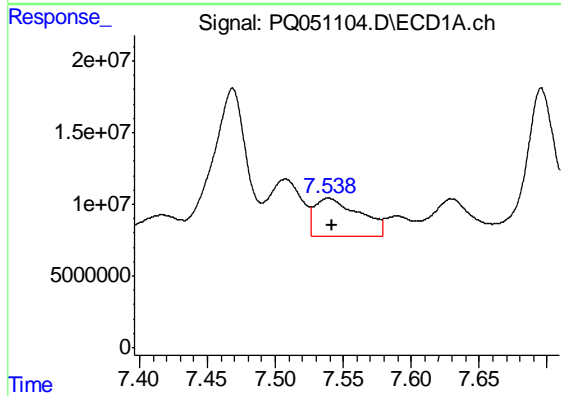
R.T.: 6.758 min
 Delta R.T.: 0.000 min
 Response: 286783146
 Conc: 664.85 ng/ml

Instrument :
 ECD_Q
 ClientSampleId :
 C0B79MS



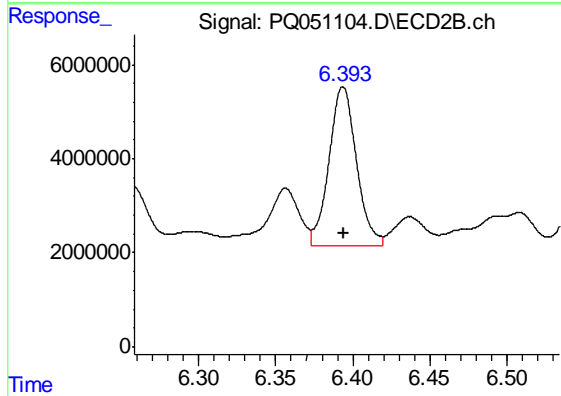
#19 AR-1242-4

R.T.: 5.828 min
 Delta R.T.: -0.001 min
 Response: 38962124
 Conc: 333.95 ng/ml



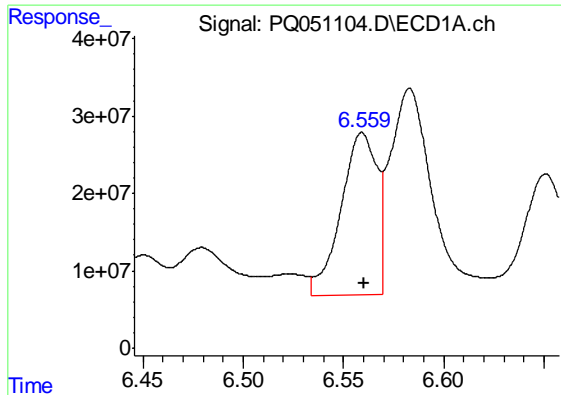
#20 AR-1242-5

R.T.: 7.539 min
 Delta R.T.: -0.003 min
 Response: 61509876
 Conc: 131.14 ng/ml



#20 AR-1242-5

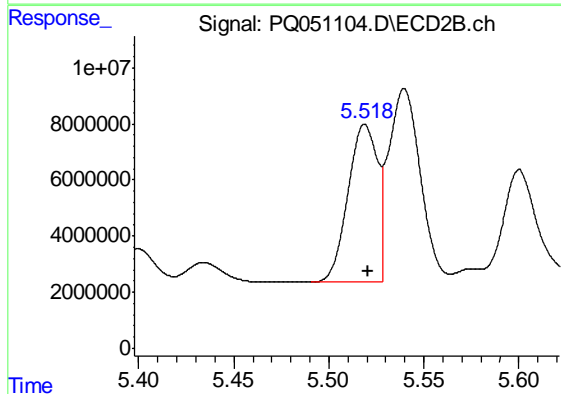
R.T.: 6.394 min
 Delta R.T.: 0.000 min
 Response: 41638436
 Conc: 263.17 ng/ml



#21 AR-1248-1

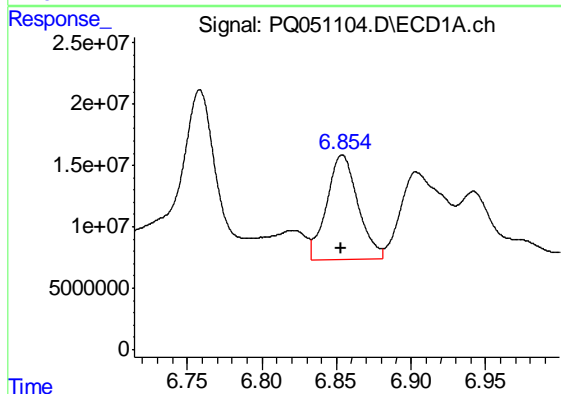
R.T.: 6.559 min
 Delta R.T.: -0.001 min
 Response: 261833885
 Conc: 607.17 ng/ml

Instrument :
 ECD_Q
 ClientSampleId :
 C0B79MS



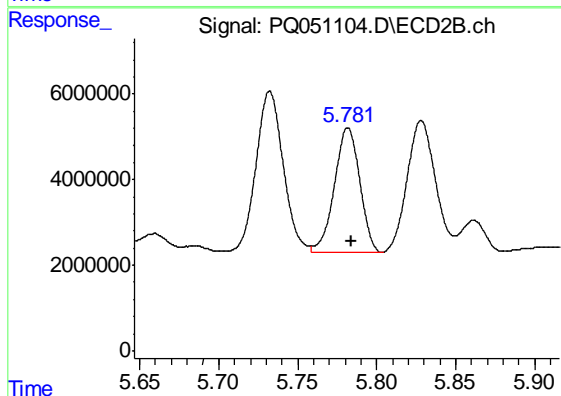
#21 AR-1248-1

R.T.: 5.519 min
 Delta R.T.: -0.002 min
 Response: 60198585
 Conc: 507.90 ng/ml



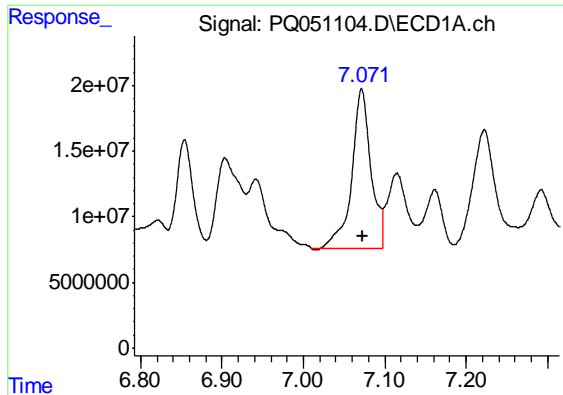
#22 AR-1248-2

R.T.: 6.854 min
 Delta R.T.: 0.000 min
 Response: 124213283
 Conc: 206.26 ng/ml



#22 AR-1248-2

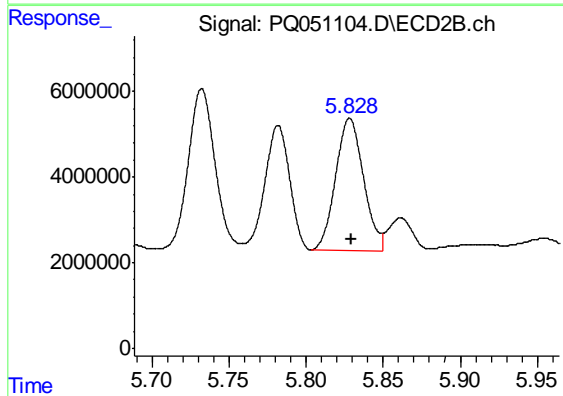
R.T.: 5.782 min
 Delta R.T.: -0.002 min
 Response: 32632602
 Conc: 198.15 ng/ml



#23 AR-1248-3

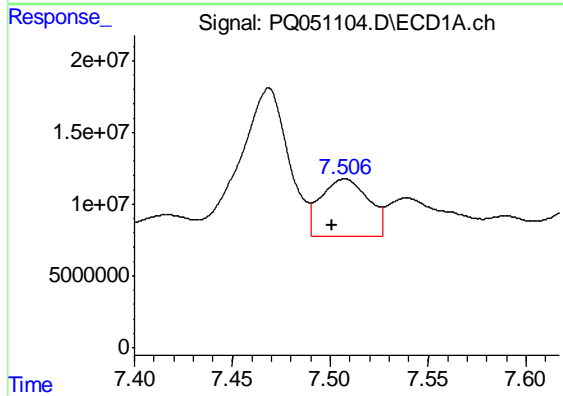
R.T.: 7.072 min
Delta R.T.: -0.002 min
Response: 198006228
Conc: 285.15 ng/ml

Instrument :
ECD_Q
ClientSampleId :
C0B79MS



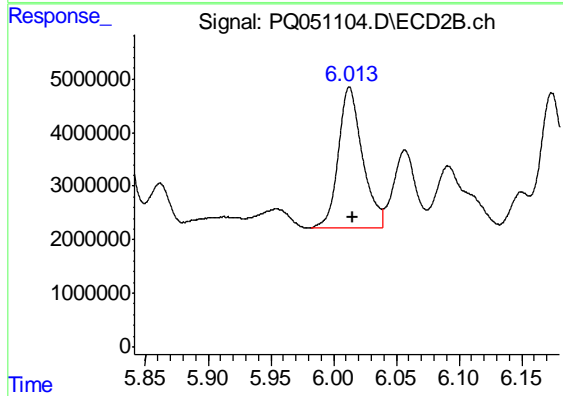
#23 AR-1248-3

R.T.: 5.828 min
Delta R.T.: -0.001 min
Response: 38962124
Conc: 228.28 ng/ml



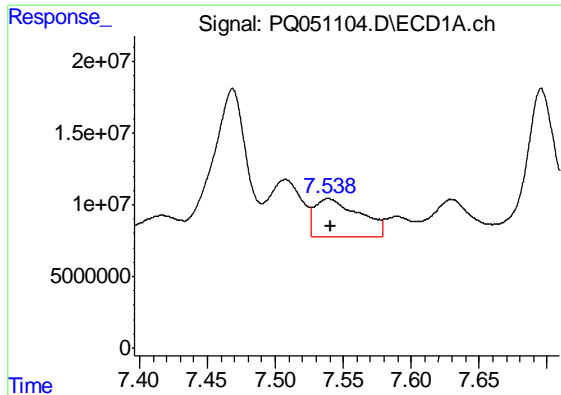
#24 AR-1248-4

R.T.: 7.507 min
Delta R.T.: 0.006 min
Response: 68212918
Conc: 84.21 ng/ml



#24 AR-1248-4

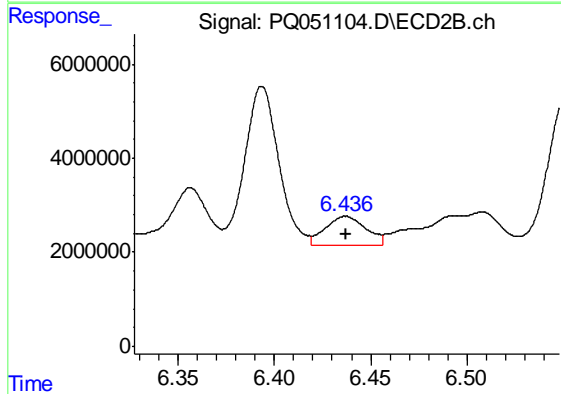
R.T.: 6.013 min
Delta R.T.: -0.003 min
Response: 35109876
Conc: 170.16 ng/ml



#25 AR-1248-5

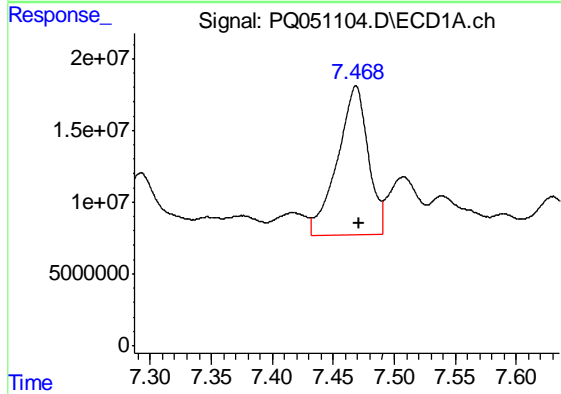
R.T.: 7.539 min
 Delta R.T.: -0.002 min
 Response: 61509876
 Conc: 78.31 ng/ml

Instrument :
 ECD_Q
 ClientSampleId :
 C0B79MS



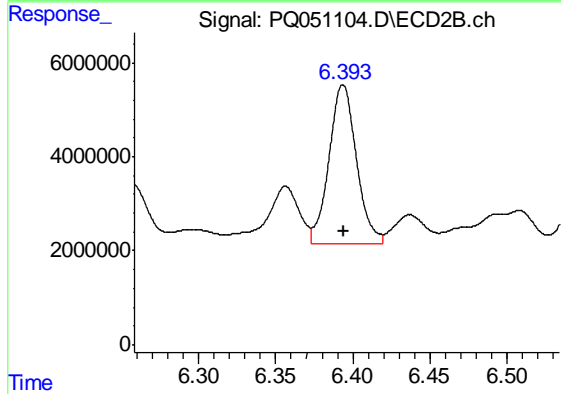
#25 AR-1248-5

R.T.: 6.437 min
 Delta R.T.: 0.000 min
 Response: 9021709
 Conc: 42.06 ng/ml



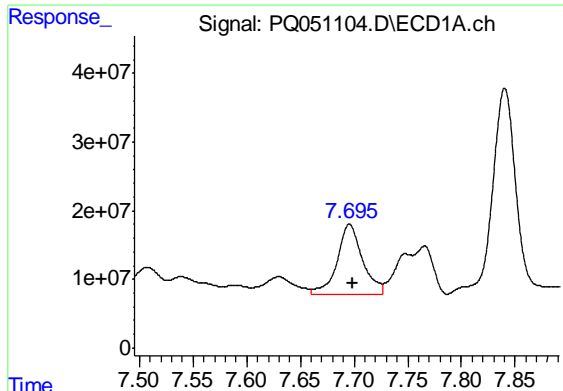
#26 AR-1254-1

R.T.: 7.469 min
 Delta R.T.: -0.002 min
 Response: 181856793
 Conc: 212.06 ng/ml



#26 AR-1254-1

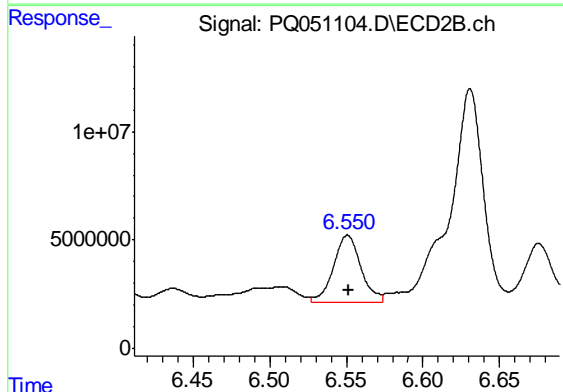
R.T.: 6.394 min
 Delta R.T.: 0.000 min
 Response: 41638436
 Conc: 116.26 ng/ml



#27 AR-1254-2

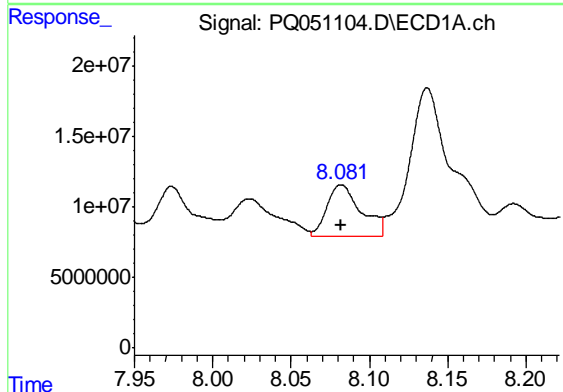
R.T.: 7.696 min
 Delta R.T.: -0.003 min
 Response: 170829456
 Conc: 128.17 ng/ml

Instrument :
 ECD_Q
 ClientSampleId :
 C0B79MS



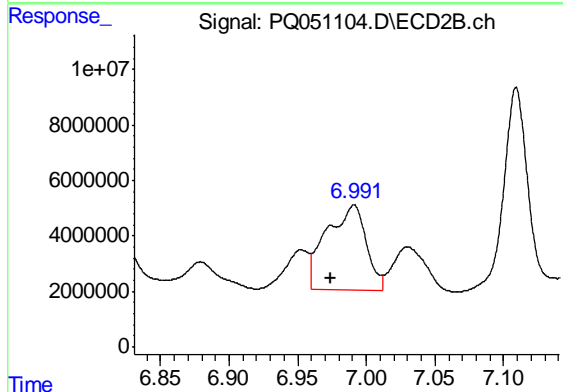
#27 AR-1254-2

R.T.: 6.551 min
 Delta R.T.: -0.001 min
 Response: 38636767
 Conc: 124.70 ng/ml



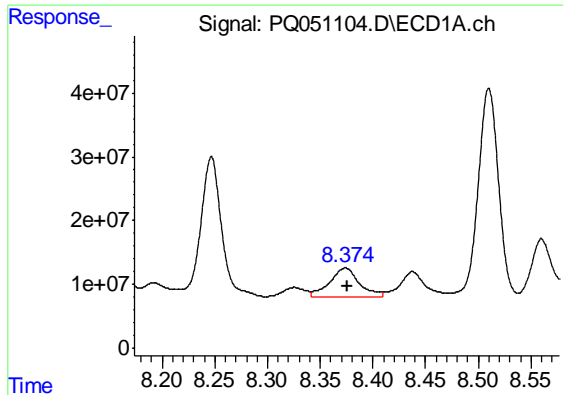
#28 AR-1254-3

R.T.: 8.082 min
 Delta R.T.: 0.000 min
 Response: 56321323
 Conc: 38.89 ng/ml



#28 AR-1254-3

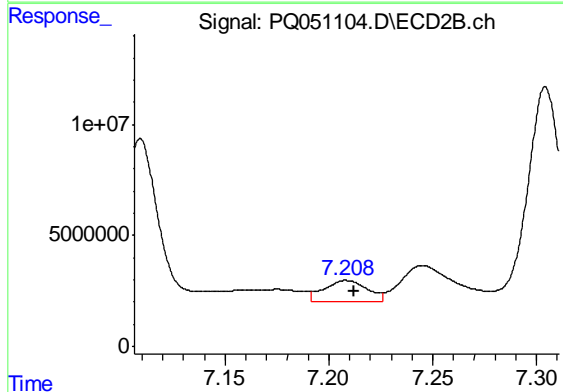
R.T.: 6.991 min
 Delta R.T.: 0.017 min
 Response: 61812438
 Conc: 119.62 ng/ml



#29 AR-1254-4

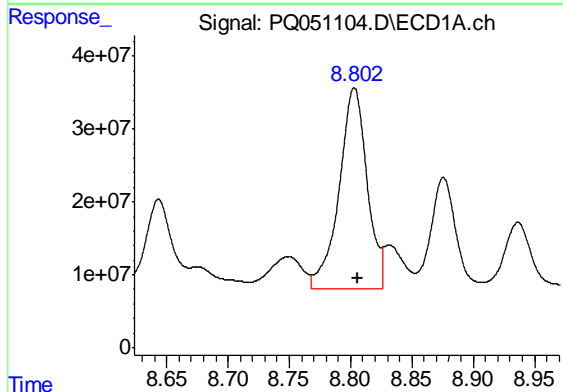
R.T.: 8.374 min
 Delta R.T.: -0.002 min
 Response: 92805962
 Conc: 88.60 ng/ml

Instrument :
 ECD_Q
 ClientSampled :
 C0B79MS



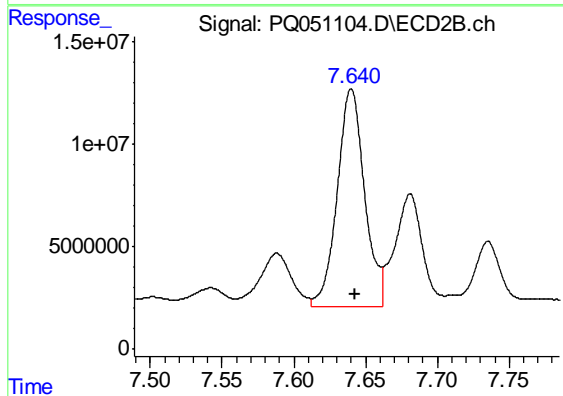
#29 AR-1254-4

R.T.: 7.208 min
 Delta R.T.: -0.003 min
 Response: 13873751
 Conc: 42.62 ng/ml



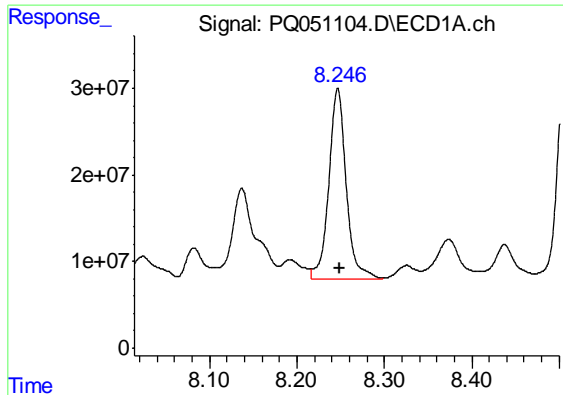
#30 AR-1254-5

R.T.: 8.803 min
 Delta R.T.: -0.002 min
 Response: 440806712
 Conc: 399.60 ng/ml



#30 AR-1254-5

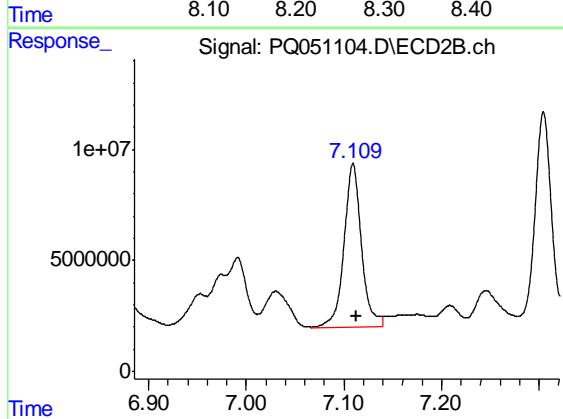
R.T.: 7.640 min
 Delta R.T.: -0.002 min
 Response: 140870640
 Conc: 310.45 ng/ml



#31 AR-1260-1

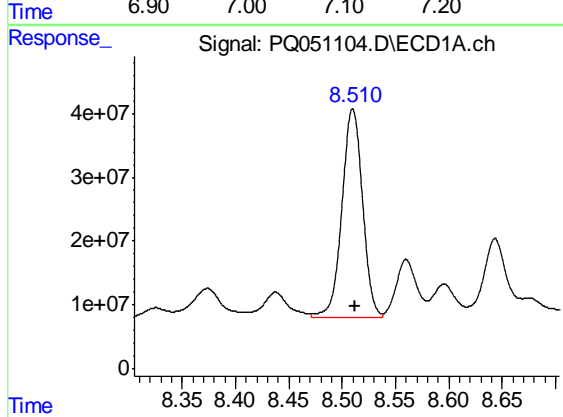
R.T.: 8.247 min
 Delta R.T.: -0.002 min
 Response: 307679867
 Conc: 353.10 ng/ml

Instrument :
 ECD_Q
 ClientSampleId :
 C0B79MS



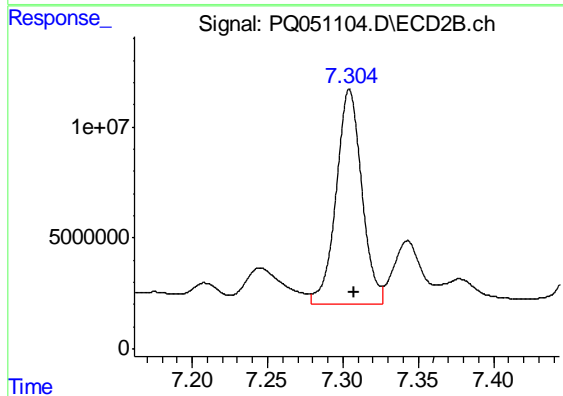
#31 AR-1260-1

R.T.: 7.109 min
 Delta R.T.: -0.003 min
 Response: 91718703
 Conc: 298.02 ng/ml



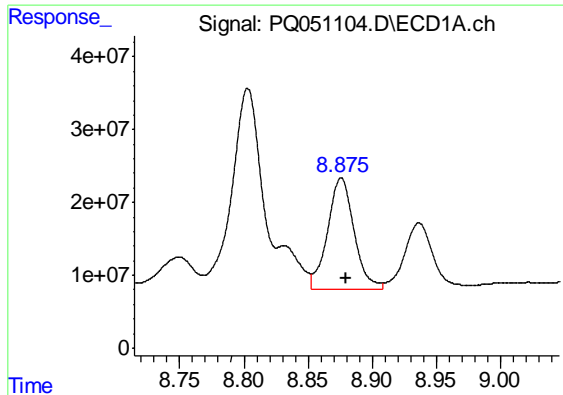
#32 AR-1260-2

R.T.: 8.510 min
 Delta R.T.: -0.002 min
 Response: 443050996
 Conc: 432.55 ng/ml



#32 AR-1260-2

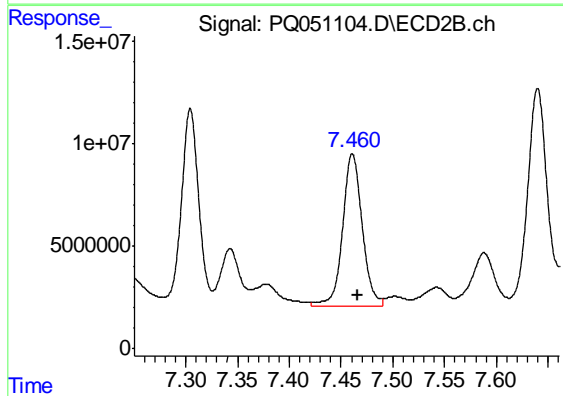
R.T.: 7.304 min
 Delta R.T.: -0.003 min
 Response: 114484800
 Conc: 295.05 ng/ml



#33 AR-1260-3

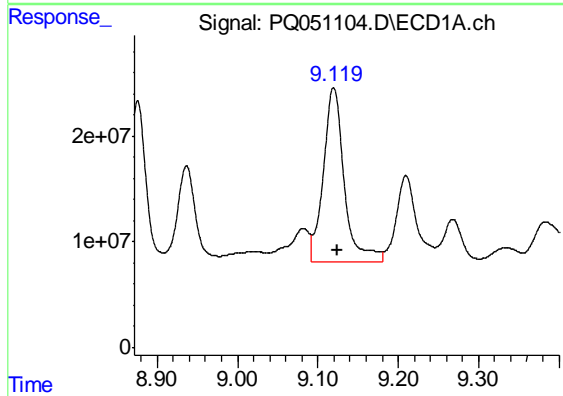
R.T.: 8.876 min
 Delta R.T.: -0.004 min
 Response: 217916767
 Conc: 294.63 ng/ml

Instrument :
 ECD_Q
 ClientSampleId :
 C0B79MS



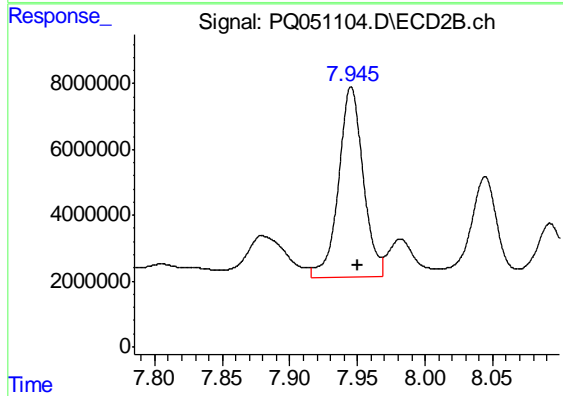
#33 AR-1260-3

R.T.: 7.461 min
 Delta R.T.: -0.005 min
 Response: 99069168
 Conc: 274.24 ng/ml



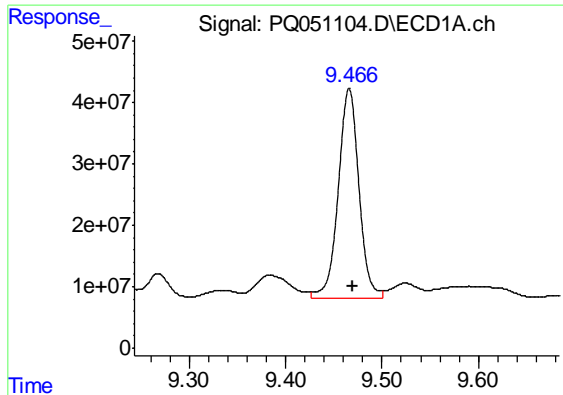
#34 AR-1260-4

R.T.: 9.120 min
 Delta R.T.: -0.004 min
 Response: 296418905
 Conc: 351.13 ng/ml



#34 AR-1260-4

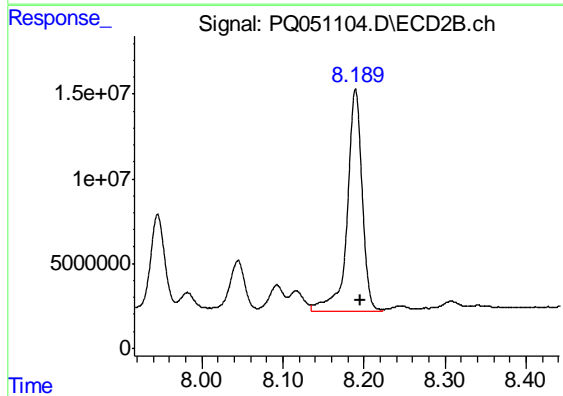
R.T.: 7.945 min
 Delta R.T.: -0.005 min
 Response: 73208669
 Conc: 233.72 ng/ml



#35 AR-1260-5

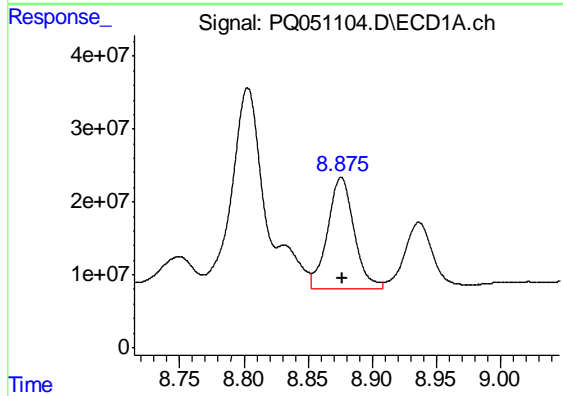
R.T.: 9.466 min
 Delta R.T.: -0.003 min
 Response: 502156886
 Conc: 285.52 ng/ml

Instrument :
 ECD_Q
 ClientSampled :
 C0B79MS



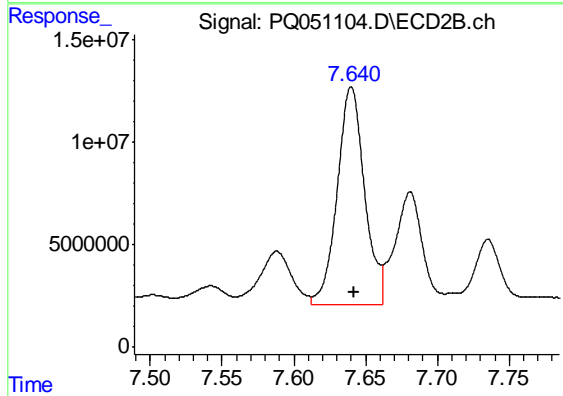
#35 AR-1260-5

R.T.: 8.190 min
 Delta R.T.: -0.005 min
 Response: 170202870
 Conc: 216.65 ng/ml



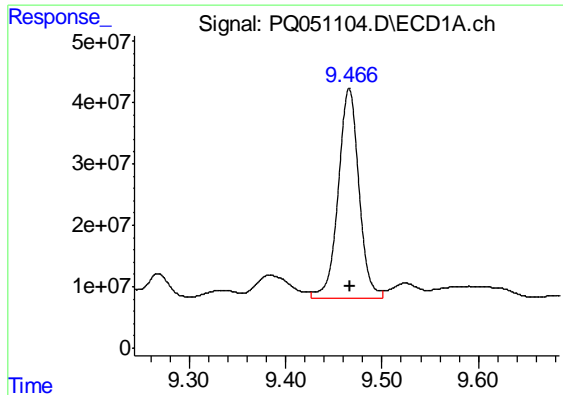
#36 AR-1262-1

R.T.: 8.876 min
 Delta R.T.: -0.001 min
 Response: 217916767
 Conc: 171.36 ng/ml



#36 AR-1262-1

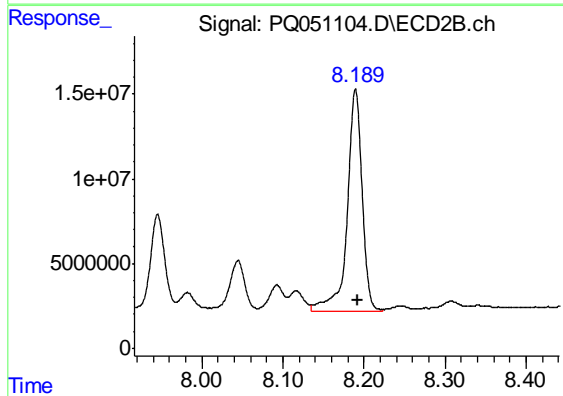
R.T.: 7.640 min
 Delta R.T.: -0.002 min
 Response: 140870640
 Conc: 605.61 ng/ml



#37 AR-1262-2

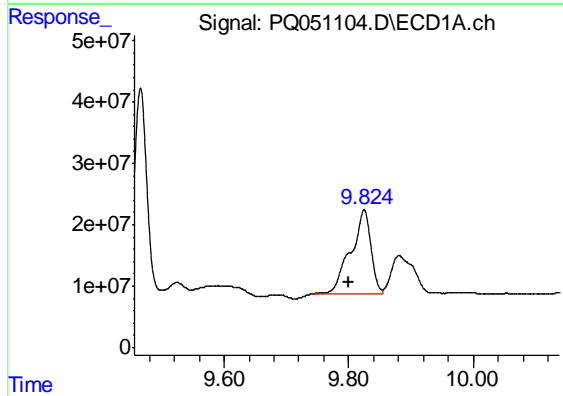
R.T.: 9.466 min
 Delta R.T.: -0.001 min
 Response: 502156886
 Conc: 221.14 ng/ml

Instrument :
 ECD_Q
 ClientSampleId :
 C0B79MS



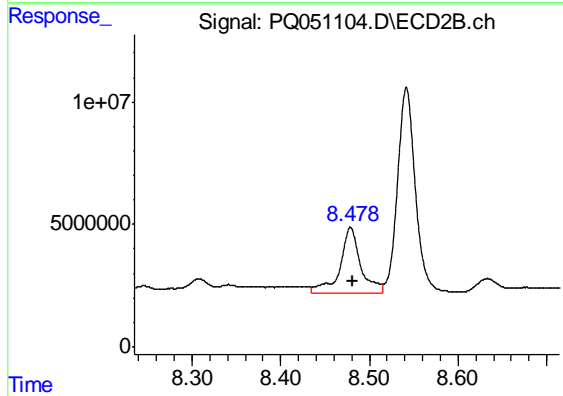
#37 AR-1262-2

R.T.: 8.190 min
 Delta R.T.: -0.004 min
 Response: 170202870
 Conc: 197.81 ng/ml



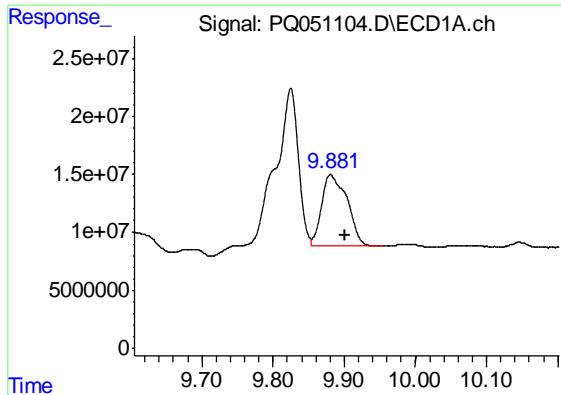
#38 AR-1262-3

R.T.: 9.825 min
 Delta R.T.: 0.024 min
 Response: 306128418
 Conc: 323.72 ng/ml



#38 AR-1262-3

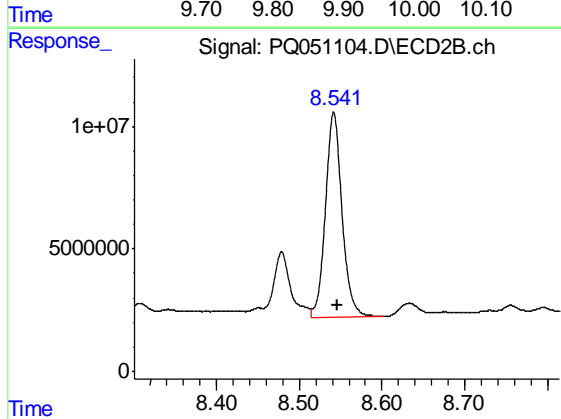
R.T.: 8.479 min
 Delta R.T.: -0.003 min
 Response: 43155257
 Conc: 137.70 ng/ml



#39 AR-1262-4

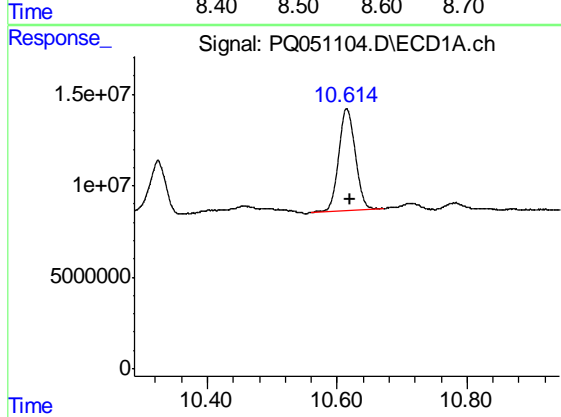
R.T.: 9.881 min
Delta R.T.: -0.021 min
Response: 152830435
Conc: 265.76 ng/ml

Instrument :
ECD_Q
ClientSampleId :
C0B79MS



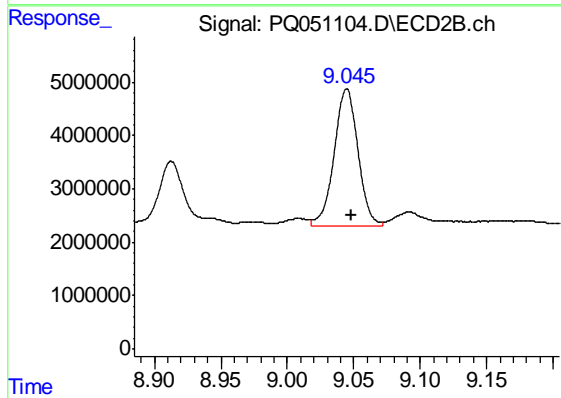
#39 AR-1262-4

R.T.: 8.542 min
Delta R.T.: -0.004 min
Response: 116558429
Conc: 189.90 ng/ml



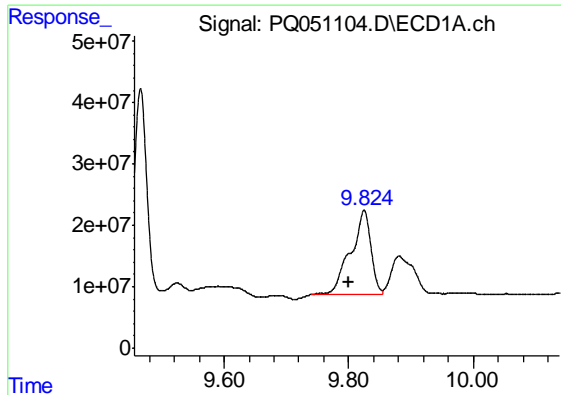
#40 AR-1262-5

R.T.: 10.615 min
Delta R.T.: -0.005 min
Response: 98321637
Conc: 122.14 ng/ml



#40 AR-1262-5

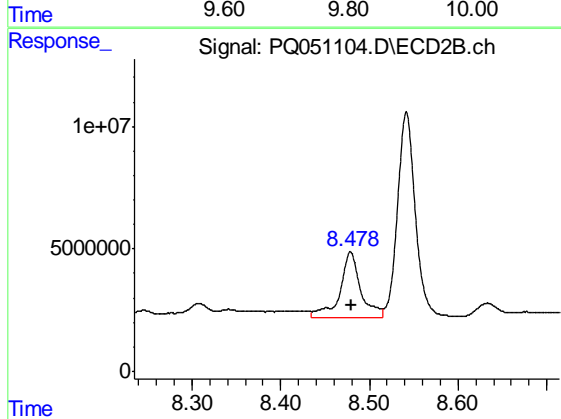
R.T.: 9.045 min
Delta R.T.: -0.003 min
Response: 32312928
Conc: 116.28 ng/ml



#41 AR-1268-1

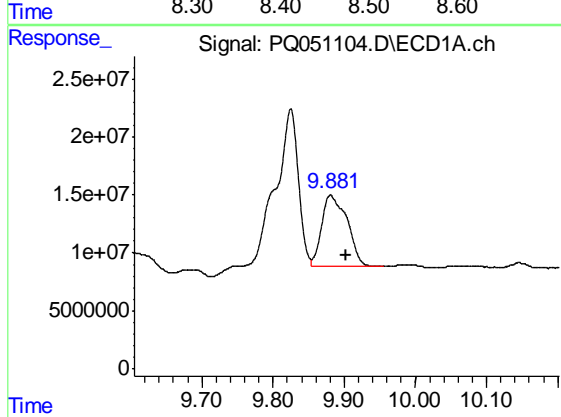
R.T.: 9.825 min
 Delta R.T.: 0.025 min
 Response: 306128418
 Conc: 112.33 ng/ml

Instrument :
 ECD_Q
 ClientSampleId :
 C0B79MS



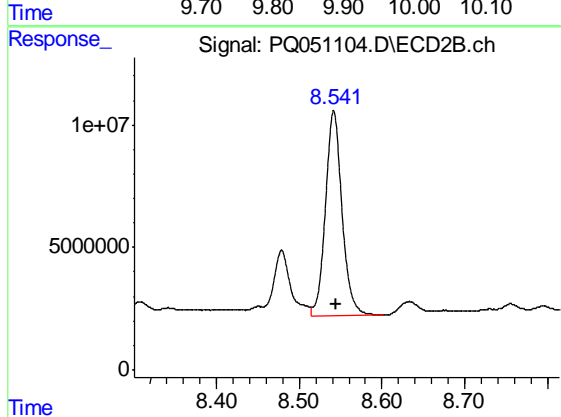
#41 AR-1268-1

R.T.: 8.479 min
 Delta R.T.: -0.001 min
 Response: 43155257
 Conc: 45.87 ng/ml



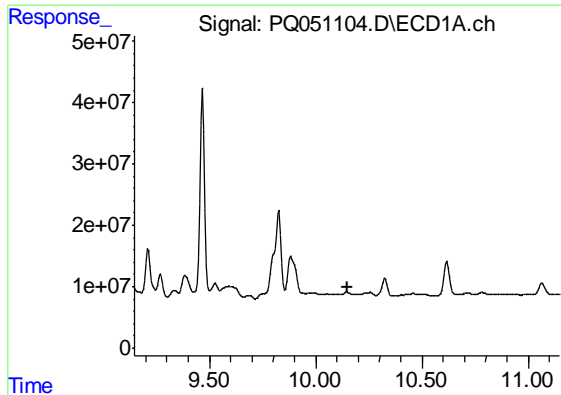
#42 AR-1268-2

R.T.: 9.881 min
 Delta R.T.: -0.021 min
 Response: 152830435
 Conc: 61.35 ng/ml



#42 AR-1268-2

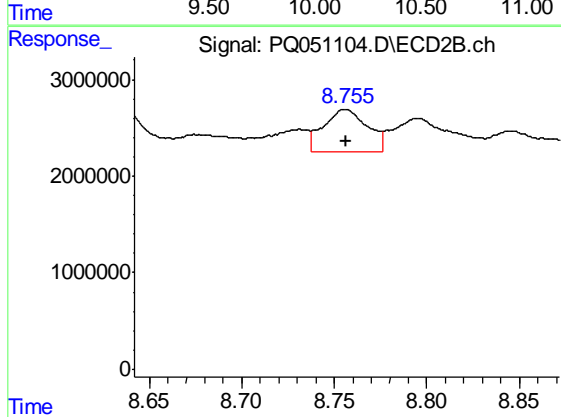
R.T.: 8.542 min
 Delta R.T.: -0.003 min
 Response: 116558429
 Conc: 131.22 ng/ml



#43 AR-1268-3

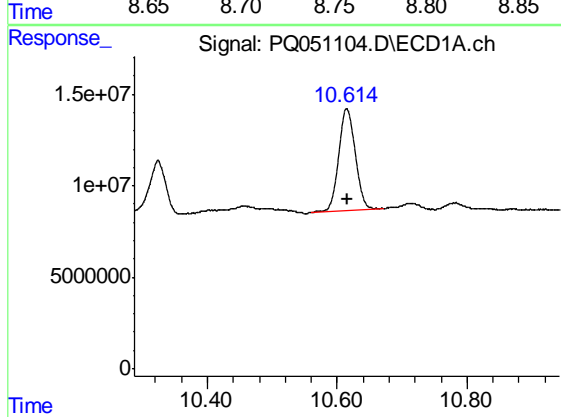
R.T.: 0.000 min
 Exp R.T. : 10.147 min
 Response: 0
 Conc: N.D.

Instrument :
 ECD_Q
 ClientSampleId :
 C0B79MS



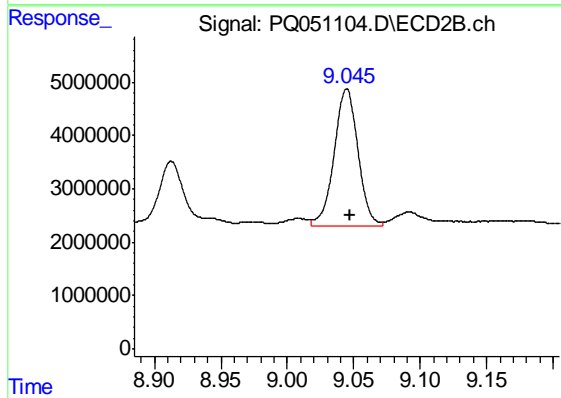
#43 AR-1268-3

R.T.: 8.756 min
 Delta R.T.: 0.000 min
 Response: 7228523
 Conc: 9.65 ng/ml



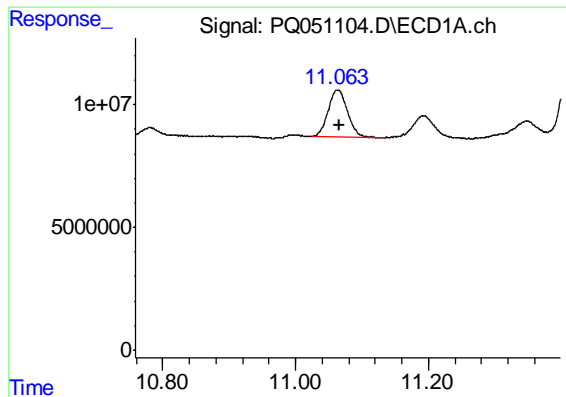
#44 AR-1268-4

R.T.: 10.615 min
 Delta R.T.: -0.001 min
 Response: 98321637
 Conc: 105.19 ng/ml



#44 AR-1268-4

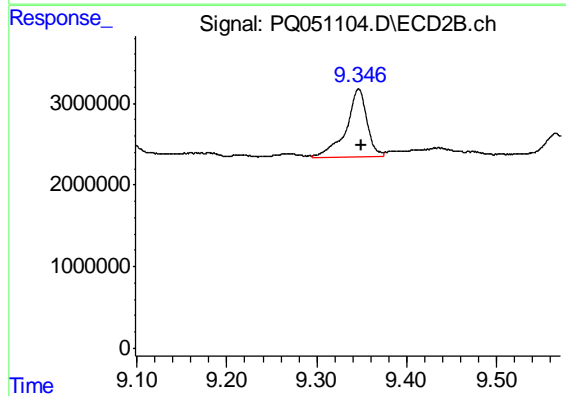
R.T.: 9.045 min
 Delta R.T.: -0.003 min
 Response: 32312928
 Conc: 103.00 ng/ml



#45 AR-1268-5

R.T.: 11.064 min
Delta R.T.: -0.002 min
Response: 38621740
Conc: 5.13 ng/ml

Instrument :
ECD_Q
ClientSampleId :
C0B79MS



#45 AR-1268-5

R.T.: 9.347 min
Delta R.T.: -0.003 min
Response: 13503890
Conc: 5.55 ng/ml