

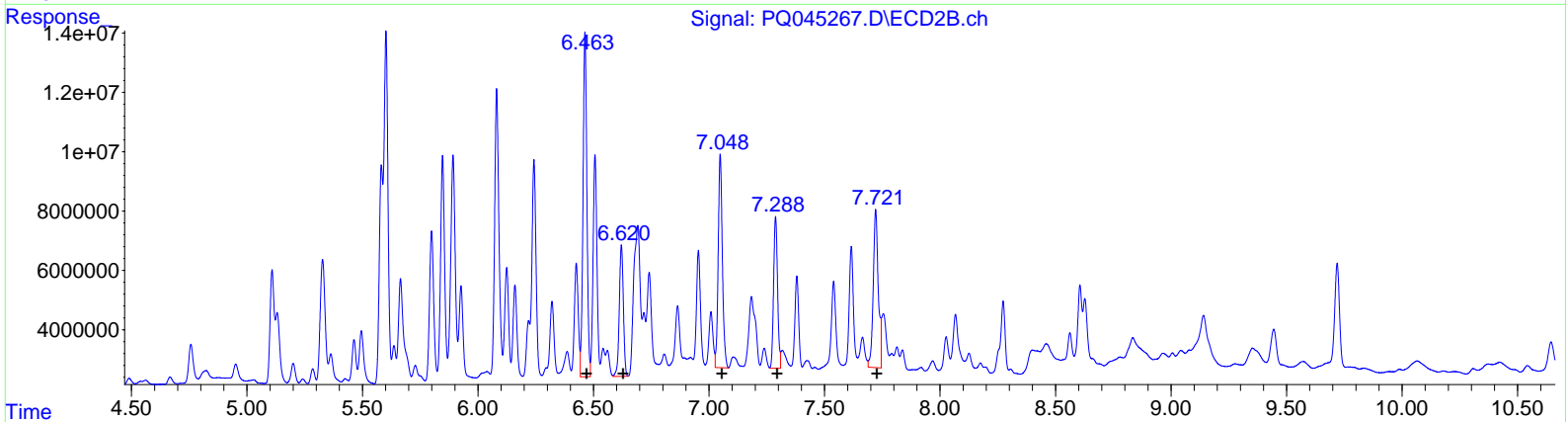
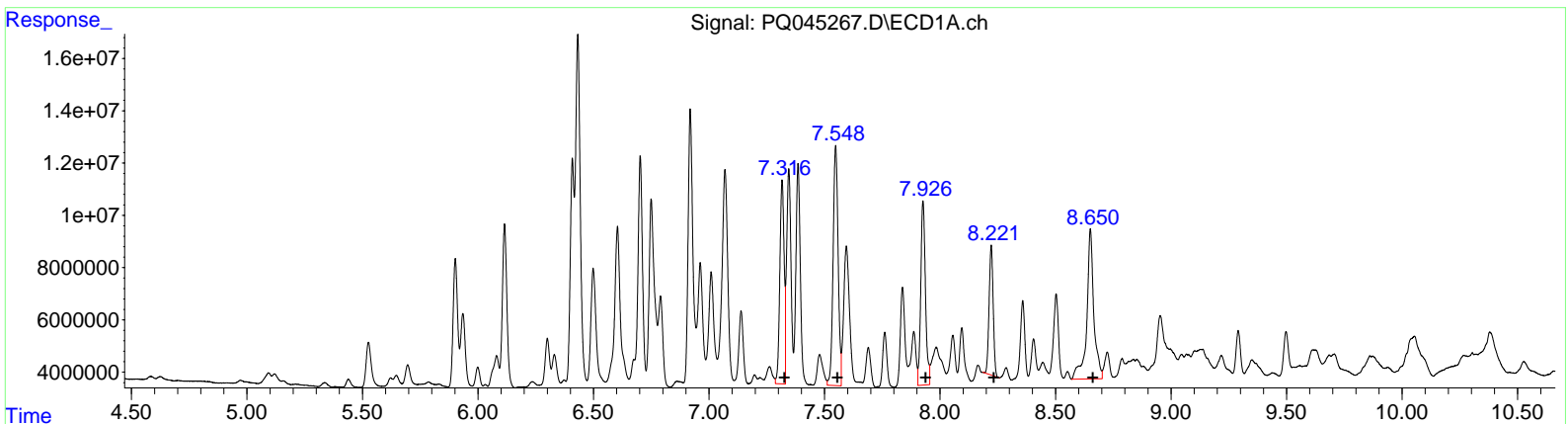
Data Path : Z:\pestpcbsrv\HPCHEM1\ECD_Q\Data\PQ112019\
 Data File : PQ045267.D
 Signal(s) : Signal #1: ECD1A.ch Signal #2: ECD2B.ch
 Acq On : 20 Nov 2019 19:40
 Operator : SM\AJ
 Sample : K5854-05DL2 20X
 Misc :
 ALS Vial : 16 Sample Multiplier: 1

Instrument :
 ECD_Q
Client Sampled :
 C0AC3DL2

Manual Integrations
APPROVED
 Ankita
 11/21/2019 1:34:45 PM

Integration File signal 1: autoint1.e
 Integration File signal 2: autoint2.e
 Quant Time: Nov 21 03:32:55 2019
 Quant Method : Z:\pestpcbsrv\HPCHEM1\ECD_Q\Method\PQ110719CLP.M
 Quant Title : GC EXTRACTABLES
 QLast Update : Fri Nov 08 03:35:55 2019
 Response via : Initial Calibration
 Integrator: ChemStation

Volume Inj. : 1 µl
 Signal #1 Phase : ZB MR1 Signal #2 Phase: ZB MR2
 Signal #1 Info : 30Mx0.32mmx 0.5µm Signal #2 Info : 30M x 0.32mm x 0.25µm



(26) AR-1254-1 (L6)

R.T.	Response	Conc
7.32	100837776	311.65
7.55	138971314	279.90
7.93	99597054	187.12
8.22	60883234	157.61
8.65	122030652	282.49

(26) AR-1254-1 #2 (L6)

R.T.	Response	Conc
6.46	134380333	369.40
6.62	54091042	167.94
7.05	89758081	161.82
7.29	60988124	170.63
7.72	80785732	161.56

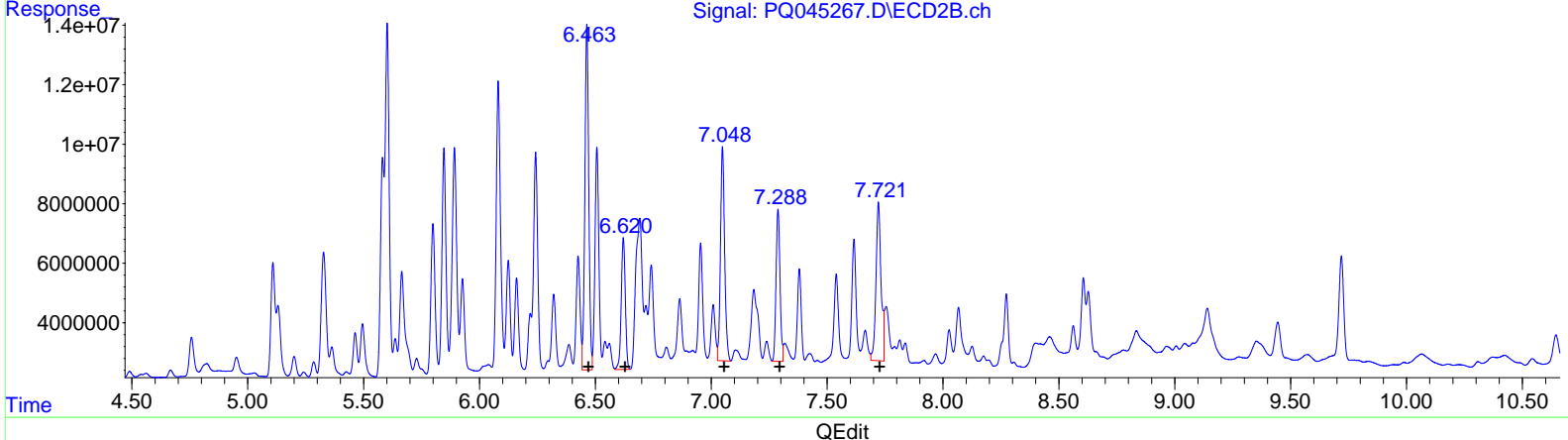
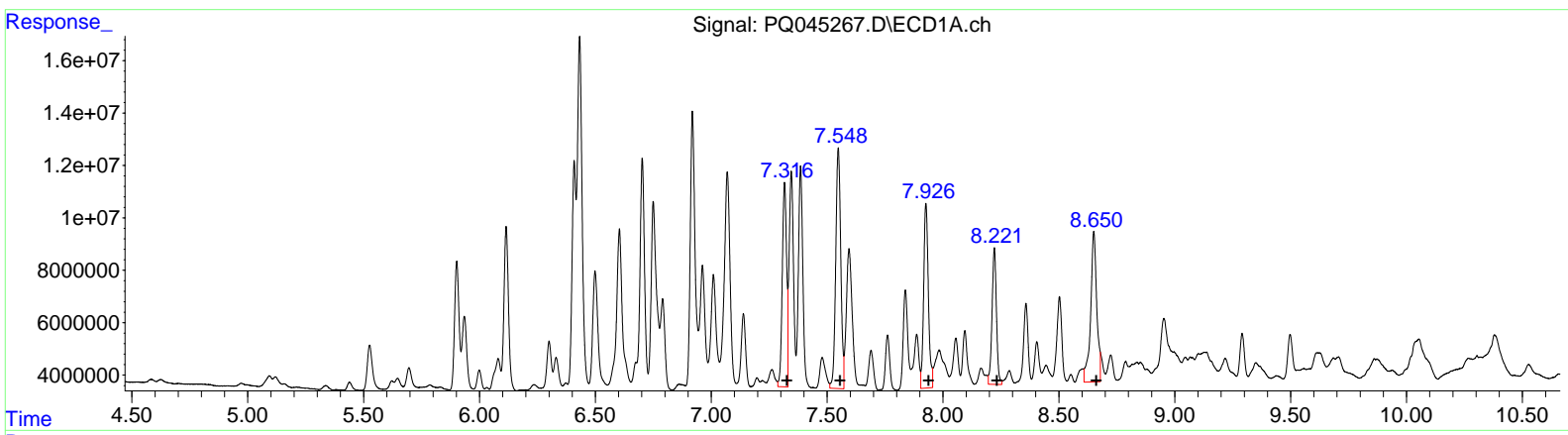
Data Path : Z:\pestpcbsrv\HPCHEM1\ECD_Q\Data\PQ112019\
 Data File : PQ045267.D
 Signal(s) : Signal #1: ECD1A.ch Signal #2: ECD2B.ch
 Acq On : 20 Nov 2019 19:40
 Operator : SM\AJ
 Sample : K5854-05DL2 20X
 Misc :
 ALS Vial : 16 Sample Multiplier: 1

Instrument :
 ECD_Q
Client Sampled :
 C0AC3DL2

Manual Integrations
APPROVED
 Ankita
 11/21/2019 1:34:45 PM

Integration File signal 1: autoint1.e
 Integration File signal 2: autoint2.e
 Quant Time: Nov 21 03:32:55 2019
 Quant Method : Z:\pestpcbsrv\HPCHEM1\ECD_Q\Method\PQ110719CLP.M
 Quant Title : GC EXTRACTABLES
 QLast Update : Fri Nov 08 03:35:55 2019
 Response via : Initial Calibration
 Integrator: ChemStation

Volume Inj. : 1 µl
 Signal #1 Phase : ZB MR1 Signal #2 Phase: ZB MR2
 Signal #1 Info : 30Mx0.32mmx 0.5µm Signal #2 Info : 30M x 0.32mm x 0.25µm



QEdit

(26) AR-1254-1 (L6)		
R.T.	Response	Conc
7.32	100837776	311.65
7.55	138971314	279.90
7.93	99597054	187.12
8.22	68992295	178.60
8.65	105297701	243.75

(26) AR-1254-1 #2 (L6)		
R.T.	Response	Conc
6.46	134380333	369.40
6.62	54091042	167.94
7.05	89758081	161.82
7.29	60988124	170.63
7.72	80785732	161.56

Data Path : Z:\pestpcbsrv\HPCHEM1\ECD_Q\Data\PQ112019\
 Data File : PQ045267.D
 Signal(s) : Signal #1: ECD1A.ch Signal #2: ECD2B.ch
 Acq On : 20 Nov 2019 19:40
 Operator : SM\AJ
 Sample : K5854-05DL2 20X
 Misc :
 ALS Vial : 16 Sample Multiplier: 1

Instrument :
 ECD_Q
Client Sampled :
 C0AC3DL2

Integration File signal 1: autoint1.e
 Integration File signal 2: autoint2.e
 Quant Time: Nov 21 03:32:55 2019
 Quant Method : Z:\pestpcbsrv\HPCHEM1\ECD_Q\Method\PQ110719CLP.M
 Quant Title : GC EXTRACTABLES
 QLast Update : Fri Nov 08 03:35:55 2019
 Response via : Initial Calibration
 Integrator: ChemStation

Manual Integrations
APPROVED

Ankita
 11/21/2019 1:34:45 PM

Volume Inj. : 1 µl
 Signal #1 Phase : ZB MR1 Signal #2 Phase: ZB MR2
 Signal #1 Info : 30Mx0.32mmx 0.5µm Signal #2 Info : 30M x 0.32mm x 0.25µm

Compound	RT#1	RT#2	Resp#1	Resp#2	ng/ml	ng/ml

System Monitoring Compounds						
2) SA Decachlor...	11.153	9.719	23291760	49040700	3.363	7.228 #
Target Compounds						
16) L4 AR-1242-1	6.409	5.582	97642683	72635717	454.269	463.277
17) L4 AR-1242-2	6.432	5.602	197.9E6	147.9E6	615.289	661.139
18) L4 AR-1242-3	6.499	5.799	75669915	60895198	381.375	547.888 #
19) L4 AR-1242-4	6.604	5.892	114.7E6	101.8E6	710.481	853.456
20) L4 AR-1242-5	7.386	6.463	111.4E6	134.4E6	615.745	818.382 #
26) L6 AR-1254-1	7.316	6.463	100.8E6	134.4E6	311.654	369.400
27) L6 AR-1254-2	7.548	6.621	139.0E6	54091042	279.901	167.943 #
28) L6 AR-1254-3	7.926	7.049	99597054	89758081	187.121	161.815
29) L6 AR-1254-4	8.221	7.288	68992295	60988124	178.602m	170.633
30) L6 AR-1254-5	8.650	7.721	105.3E6	80785732	243.755m	161.564 #

A.J
 11/23/19

(f)=RT Delta > 1/2 Window (#)=Amounts differ by > 25% (m)=manual int.