

Data Path : Z:\pestpcbsrv\HPCHEM1\ECD_Q\Data\PQ112119\
 Data File : PQ045327.D
 Signal(s) : Signal #1: ECD1A.ch Signal #2: ECD2B.ch
 Acq On : 21 Nov 2019 14:50
 Operator : SM\AJ
 Sample : AIBLK38
 Misc :
 ALS Vial : 2 Sample Multiplier: 1

Instrument :
 ECD_Q
 ClientSampled :
 AIBLK38

Integration File signal 1: autoint1.e
 Integration File signal 2: autoint2.e
 Quant Time: Nov 21 16:25:18 2019
 Quant Method : Z:\pestpcbsrv\HPCHEM1\ECD_Q\Method\PQ110719CLP.M
 Quant Title : GC EXTRACTABLES
 QLast Update : Fri Nov 08 03:35:55 2019
 Response via : Initial Calibration
 Integrator: ChemStation

Volume Inj. : 1 µl
 Signal #1 Phase : ZB MR2 Signal #2 Phase: ZB MR2
 Signal #1 Info : 30Mx0.32mmx 0.5µm Signal #2 Info : 30M x 0.32mm x 0.25µm

Compound	RT#1	RT#2	Resp#1	Resp#2	ng/ml	ng/ml
System Monitoring Compounds						
1) SA Tetrachlo...	5.096	4.302	111.9E6	73165974	14.091	15.517
2) SA Decachlor...	11.155	9.717	289.4E6	267.8E6	41.783	39.472
Target Compounds						
6) L1 AR-1016-4	0.000	5.917	0	848584	N.D.	7.815 #
7) L1 AR-1016-5	0.000	6.089	0	17348177	N.D.	113.548 #
8) L2 AR-1221-1	0.000	4.501	0	2232648	N.D.	41.624 #
9) L2 AR-1221-2	0.000	4.664	0	919584	N.D.	23.292 #
14) L3 AR-1232-4	0.000	5.917	0	848584	N.D.	14.116 #
15) L3 AR-1232-5	0.000	6.089	0	17348177	N.D.	238.191 #
19) L4 AR-1242-4	0.000	5.917	0	848584	N.D.	7.116 #
20) L4 AR-1242-5	0.000	6.489	0	95598224	N.D.	582.197 #
22) L5 AR-1248-2	0.000	5.917	0	848584	N.D.	4.985 #
23) L5 AR-1248-3	0.000	5.917	0	848584	N.D.	4.745 #
24) L5 AR-1248-4	7.321	6.089	75732054	17348177	250.051	79.699 #
25) L5 AR-1248-5	0.000	6.489	0	95598224	N.D.	428.715 #
26) L6 AR-1254-1	7.321	6.489	75732054	95598224	234.061	262.791
27) L6 AR-1254-2	0.000	6.625	0	13729999	N.D.	42.629 #
28) L6 AR-1254-3	7.941	7.060	44709226	11065058	83.999	19.948 #
29) L6 AR-1254-4	8.189	7.313	5186733	22359296	13.427	62.557 #
30) L6 AR-1254-5	8.654	7.723	6003397	12587805	13.897	25.174 #
31) L7 AR-1260-1	8.123	7.188	9235596	12862318	29.570	41.983 #
32) L7 AR-1260-2	0.000	7.371	0	32001877	N.D.	81.047 #
34) L7 AR-1260-4	0.000	8.065	0	5851573	N.D.	19.082 #
35) L7 AR-1260-5	0.000	8.271	0	2097997	N.D.	2.681 #
36) L8 AR-1262-1	0.000	7.723	0	12587805	N.D.	49.736 #
37) L8 AR-1262-2	0.000	8.271	0	2097997	N.D.	2.126 #
38) L8 AR-1262-3	0.000	8.576	0	2828303	N.D.	7.340 #
39) L8 AR-1262-4	0.000	8.623	0	1193029	N.D.	1.619 #
40) L8 AR-1262-5	0.000	9.127	0	9313495	N.D.	26.750 #
41) L9 AR-1268-1	0.000	8.576	0	2828303	N.D.	2.352 #
42) L9 AR-1268-2	0.000	8.623	0	1193029	N.D.	1.071 #
43) L9 AR-1268-3	0.000	8.836	0	6215624	N.D.	6.682 #
44) L9 AR-1268-4	0.000	9.127	0	9313495	N.D.	23.124 #
45) L9 AR-1268-5	0.000	9.447	0	2324847	N.D.	0.769 #

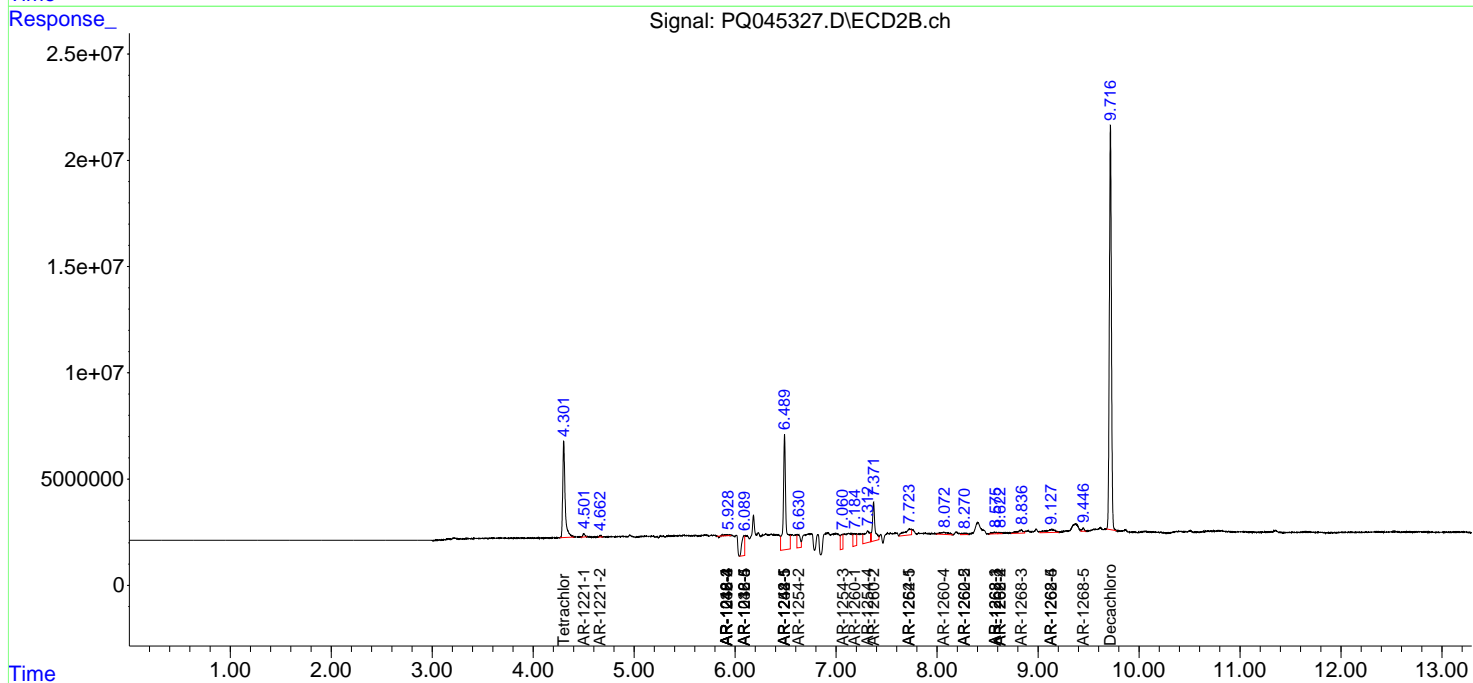
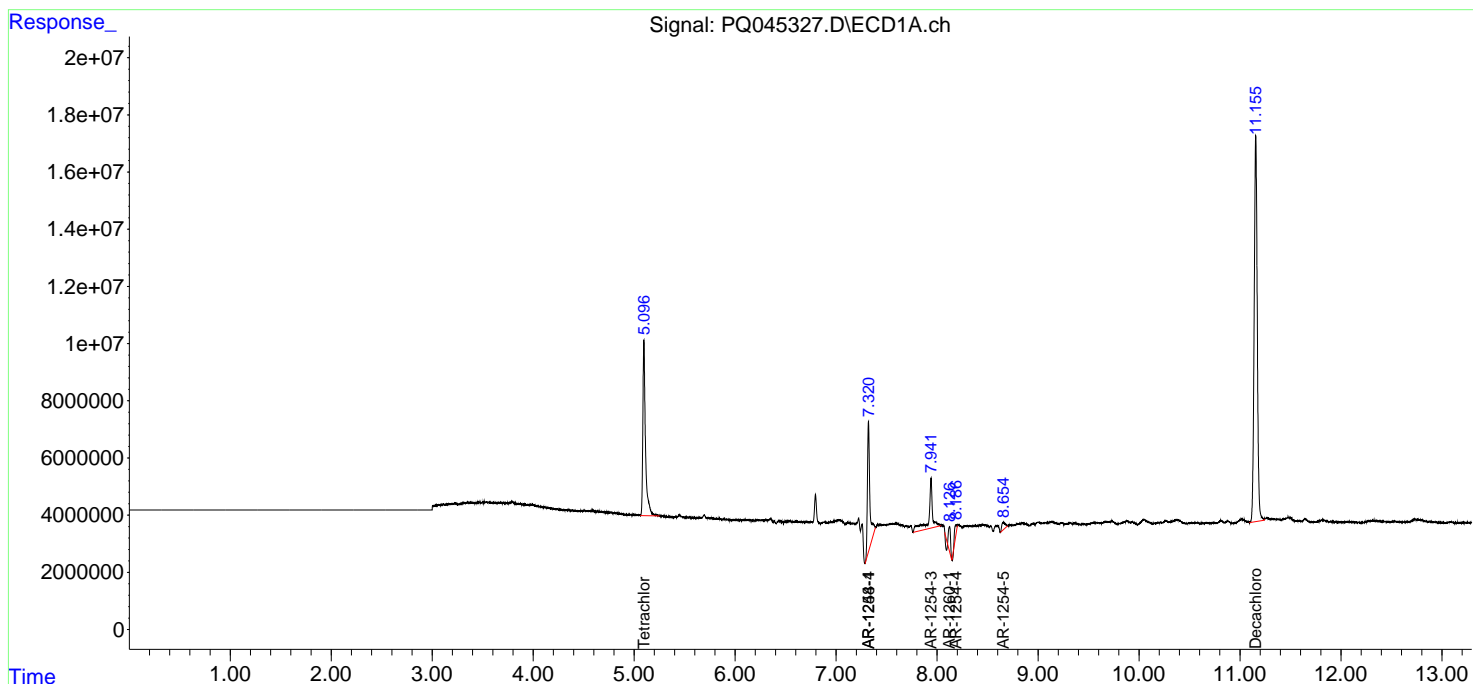
(f)=RT Delta > 1/2 Window (#)=Amounts differ by > 25% (m)=manual int.

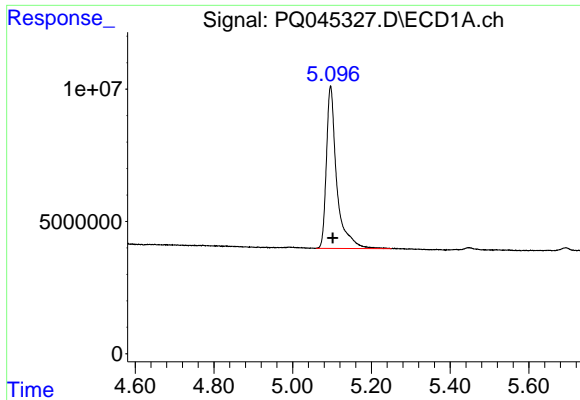
Data Path : Z:\pestpcbsrv\HPCHEM1\ECD_Q\Data\PQ112119\
 Data File : PQ045327.D
 Signal(s) : Signal #1: ECD1A.ch Signal #2: ECD2B.ch
 Acq On : 21 Nov 2019 14:50
 Operator : SM\AJ
 Sample : AIBLK38
 Misc :
 ALS Vial : 2 Sample Multiplier: 1

Instrument :
 ECD_Q
 Client Sampled :
 AIBLK38

Integration File signal 1: autoint1.e
 Integration File signal 2: autoint2.e
 Quant Time: Nov 21 16:25:18 2019
 Quant Method : Z:\pestpcbsrv\HPCHEM1\ECD_Q\Method\PQ110719CLP.M
 Quant Title : GC EXTRACTABLES
 QLast Update : Fri Nov 08 03:35:55 2019
 Response via : Initial Calibration
 Integrator: ChemStation

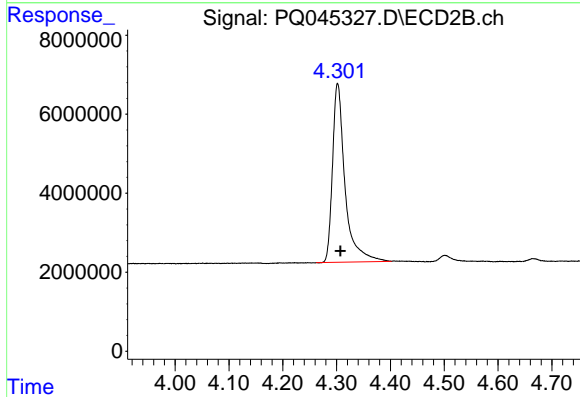
Volume Inj. : 1 µl
 Signal #1 Phase : ZB MR1 Signal #2 Phase: ZB MR2
 Signal #1 Info : 30Mx0.32mmx 0.5µm Signal #2 Info : 30M x 0.32mm x 0.25µm



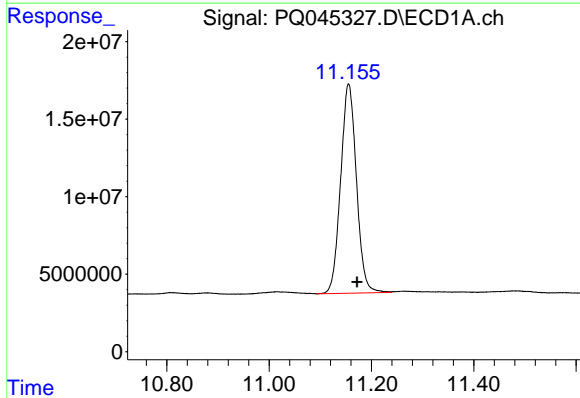


#1 Tetrachloro-m-xylene
 R.T.: 5.096 min
 Delta R.T.: -0.006 min
 Response: 111853597
 Conc: 14.09 ng/ml

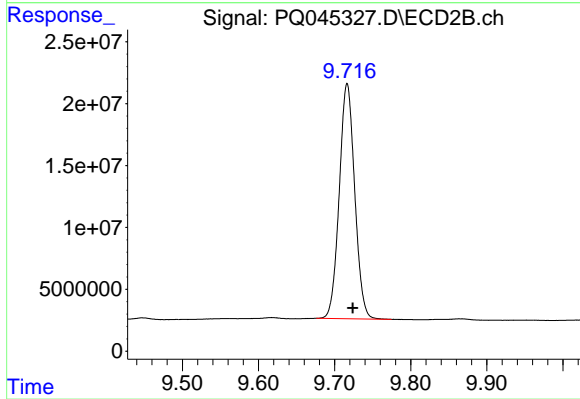
Instrument :
 ECD_Q
 ClientSampleId :
 AIBLK38



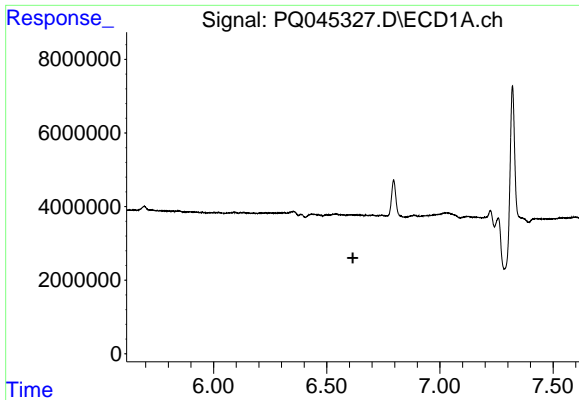
#1 Tetrachloro-m-xylene
 R.T.: 4.302 min
 Delta R.T.: -0.005 min
 Response: 73165974
 Conc: 15.52 ng/ml



#2 Decachlorobiphenyl
 R.T.: 11.155 min
 Delta R.T.: -0.016 min
 Response: 289383405
 Conc: 41.78 ng/ml



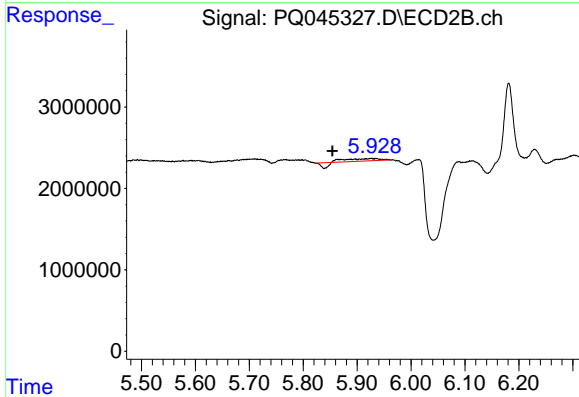
#2 Decachlorobiphenyl
 R.T.: 9.717 min
 Delta R.T.: -0.007 min
 Response: 267818934
 Conc: 39.47 ng/ml



#6 AR-1016-4

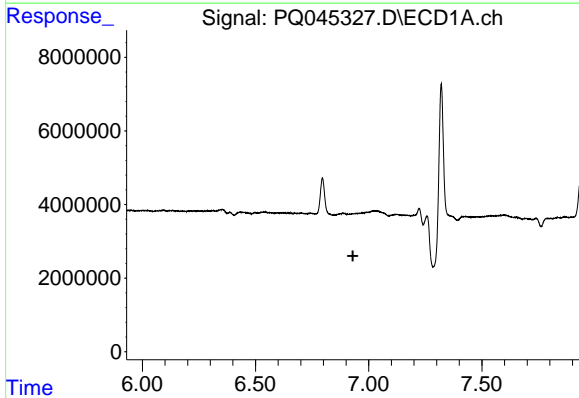
R.T.: 0.000 min
 Exp R.T. : 6.615 min
 Response: 0
 Conc: N.D.

Instrument :
 ECD_Q
 ClientSampled :
 AIBLK38



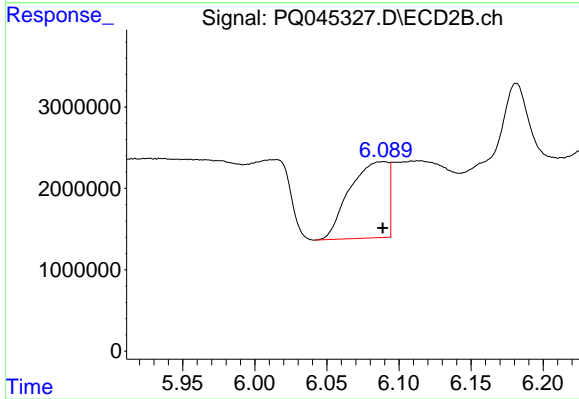
#6 AR-1016-4

R.T.: 5.917 min
 Delta R.T.: 0.062 min
 Response: 848584
 Conc: 7.81 ng/ml



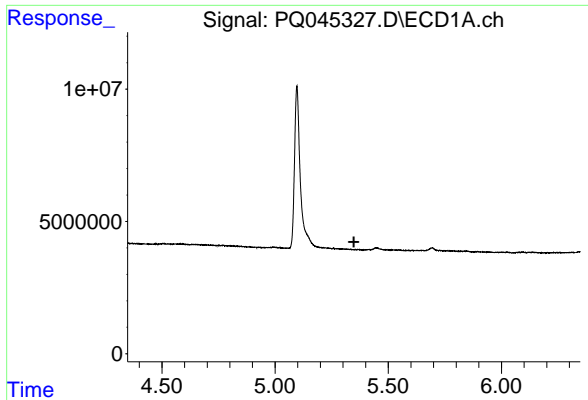
#7 AR-1016-5

R.T.: 0.000 min
 Exp R.T. : 6.930 min
 Response: 0
 Conc: N.D.



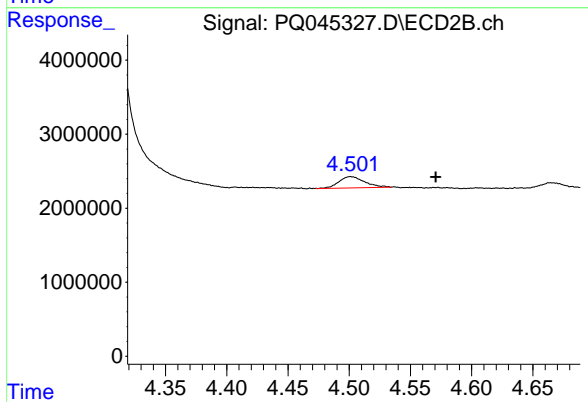
#7 AR-1016-5

R.T.: 6.089 min
 Delta R.T.: 0.000 min
 Response: 17348177
 Conc: 113.55 ng/ml

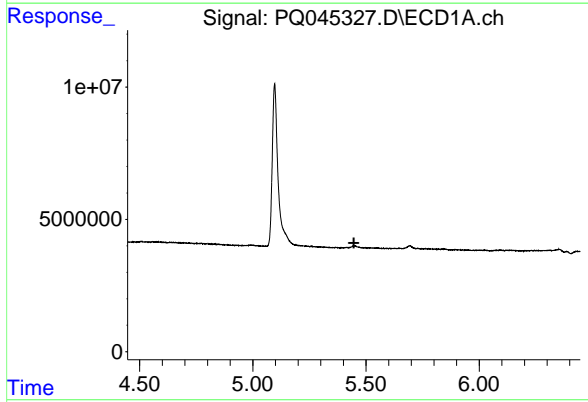


#8 AR-1221-1
 R.T.: 0.000 min
 Exp R.T. : 5.348 min
 Response: 0
 Conc: N.D.

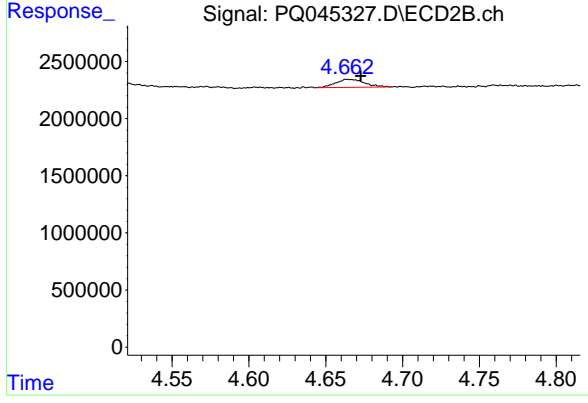
Instrument :
 ECD_Q
 ClientSampleId :
 AIBLK38



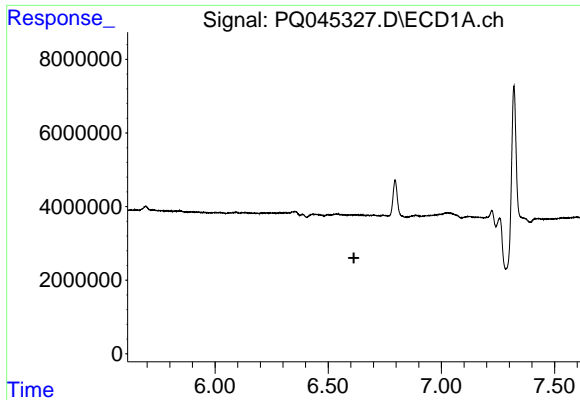
#8 AR-1221-1
 R.T.: 4.501 min
 Delta R.T.: -0.070 min
 Response: 2232648
 Conc: 41.62 ng/ml



#9 AR-1221-2
 R.T.: 0.000 min
 Exp R.T. : 5.446 min
 Response: 0
 Conc: N.D.



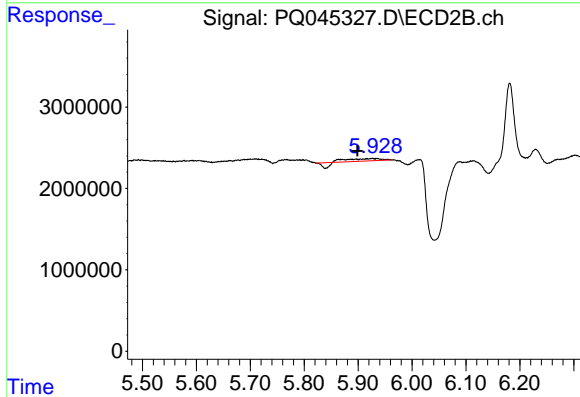
#9 AR-1221-2
 R.T.: 4.664 min
 Delta R.T.: -0.009 min
 Response: 919584
 Conc: 23.29 ng/ml



#14 AR-1232-4

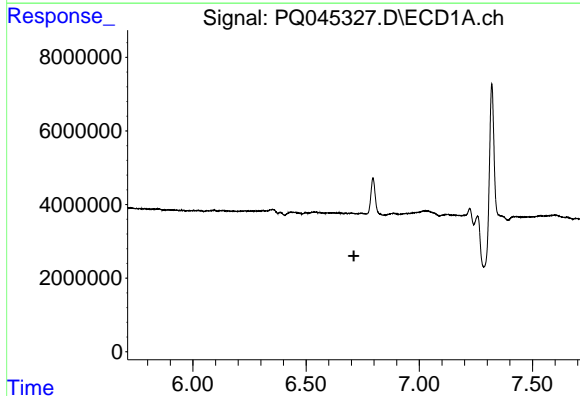
R.T.: 0.000 min
 Exp R.T. : 6.614 min
 Response: 0
 Conc: N.D.

Instrument :
 ECD_Q
 ClientSampleId :
 AIBLK38



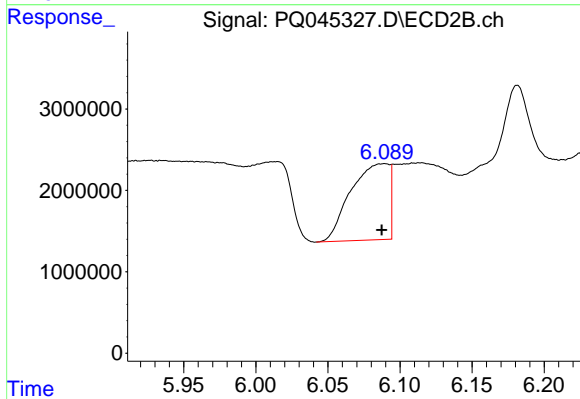
#14 AR-1232-4

R.T.: 5.917 min
 Delta R.T.: 0.018 min
 Response: 848584
 Conc: 14.12 ng/ml



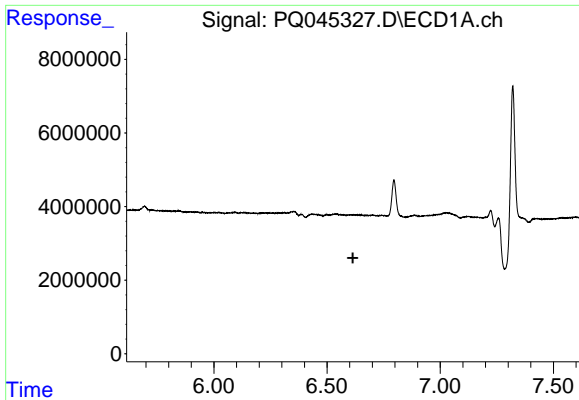
#15 AR-1232-5

R.T.: 0.000 min
 Exp R.T. : 6.711 min
 Response: 0
 Conc: N.D.



#15 AR-1232-5

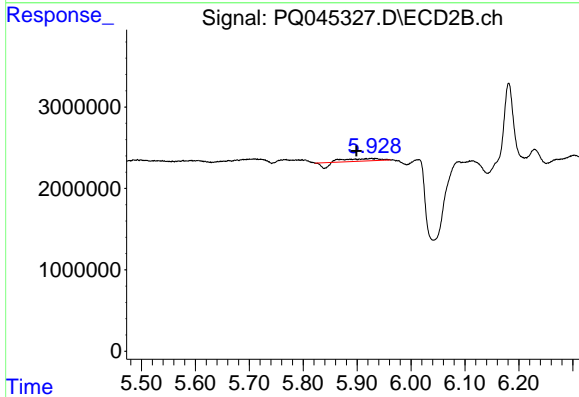
R.T.: 6.089 min
 Delta R.T.: 0.002 min
 Response: 17348177
 Conc: 238.19 ng/ml



#19 AR-1242-4

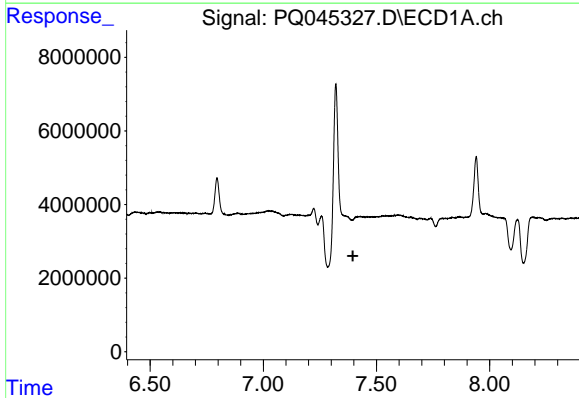
R.T.: 0.000 min
 Exp R.T. : 6.614 min
 Response: 0
 Conc: N.D.

Instrument :
 ECD_Q
 ClientSampleId :
 AIBLK38



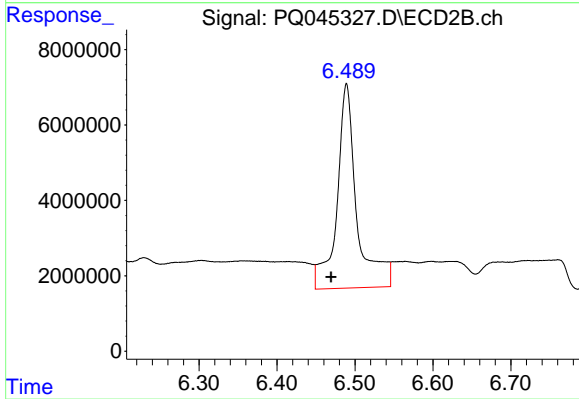
#19 AR-1242-4

R.T.: 5.917 min
 Delta R.T.: 0.018 min
 Response: 848584
 Conc: 7.12 ng/ml



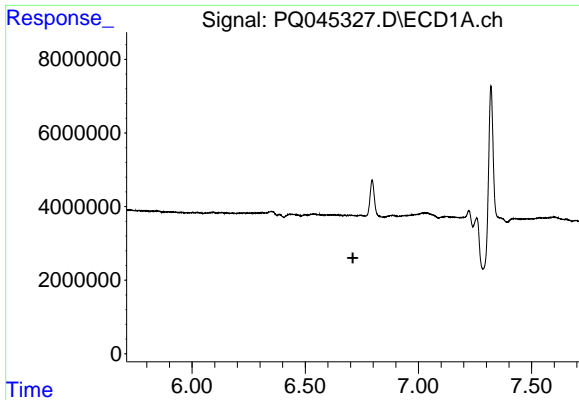
#20 AR-1242-5

R.T.: 0.000 min
 Exp R.T. : 7.396 min
 Response: 0
 Conc: N.D.



#20 AR-1242-5

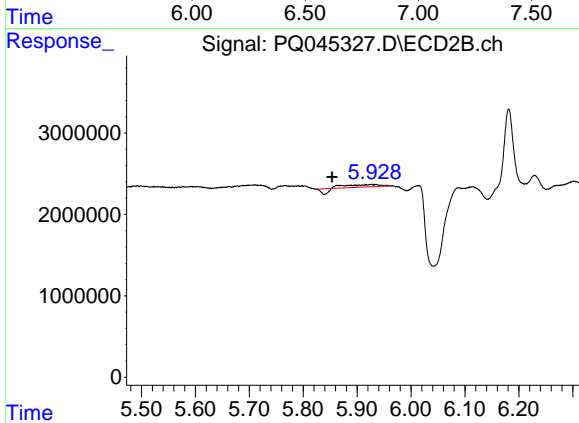
R.T.: 6.489 min
 Delta R.T.: 0.020 min
 Response: 95598224
 Conc: 582.20 ng/ml



#22 AR-1248-2

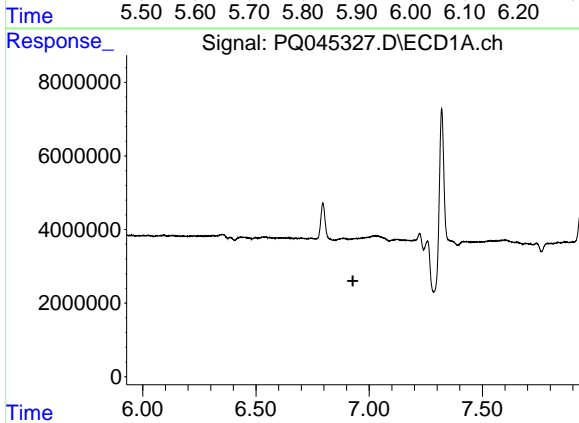
R.T.: 0.000 min
 Exp R.T. : 6.711 min
 Response: 0
 Conc: N.D.

Instrument :
 ECD_Q
 ClientSampled :
 AIBLK38



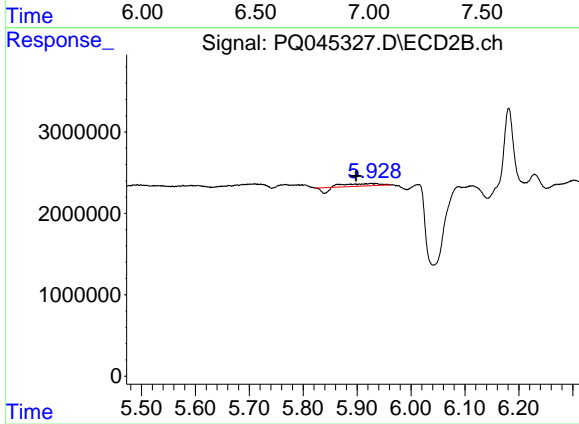
#22 AR-1248-2

R.T.: 5.917 min
 Delta R.T.: 0.064 min
 Response: 848584
 Conc: 4.98 ng/ml



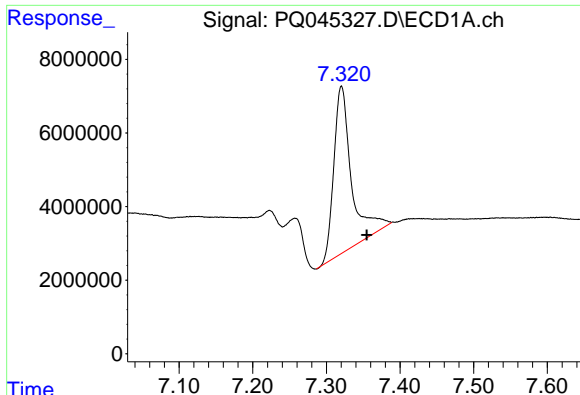
#23 AR-1248-3

R.T.: 0.000 min
 Exp R.T. : 6.928 min
 Response: 0
 Conc: N.D.



#23 AR-1248-3

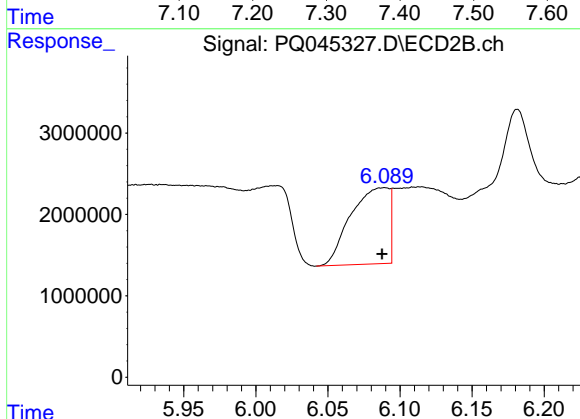
R.T.: 5.917 min
 Delta R.T.: 0.018 min
 Response: 848584
 Conc: 4.74 ng/ml



#24 AR-1248-4

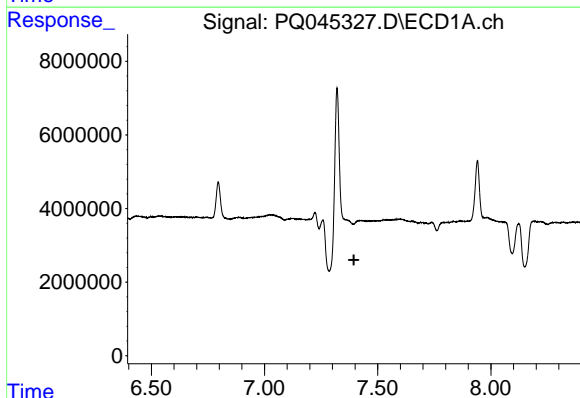
R.T.: 7.321 min
 Delta R.T.: -0.034 min
 Response: 75732054
 Conc: 250.05 ng/ml

Instrument :
 ECD_Q
 ClientSampleId :
 AIBLK38



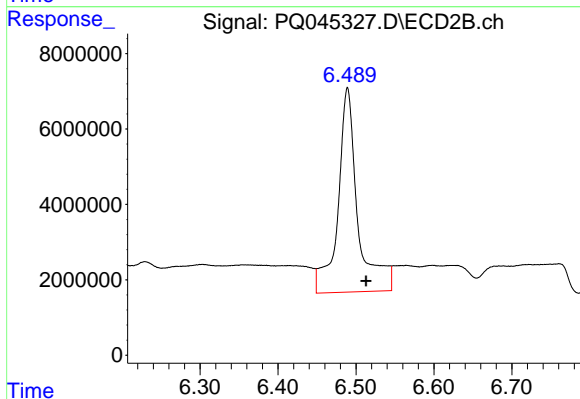
#24 AR-1248-4

R.T.: 6.089 min
 Delta R.T.: 0.001 min
 Response: 17348177
 Conc: 79.70 ng/ml



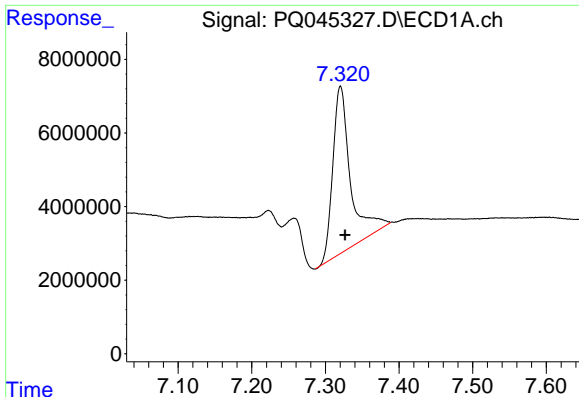
#25 AR-1248-5

R.T.: 0.000 min
 Exp R.T. : 7.395 min
 Response: 0
 Conc: N.D.



#25 AR-1248-5

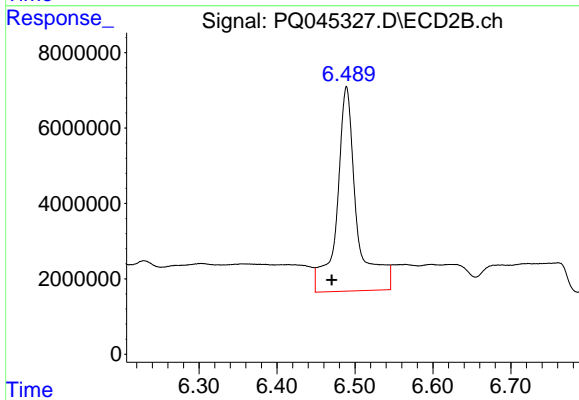
R.T.: 6.489 min
 Delta R.T.: -0.024 min
 Response: 95598224
 Conc: 428.72 ng/ml



#26 AR-1254-1

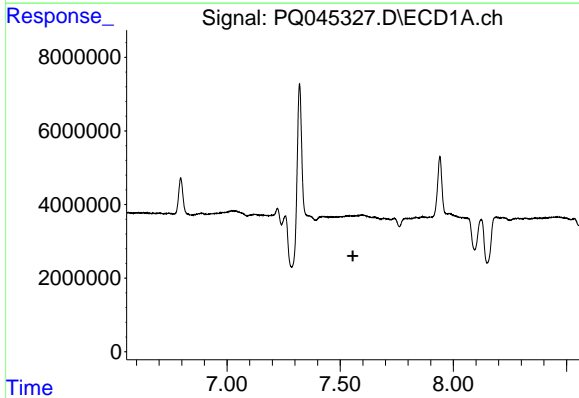
R.T.: 7.321 min
 Delta R.T.: -0.006 min
 Response: 75732054
 Conc: 234.06 ng/ml

Instrument :
 ECD_Q
 ClientSampled :
 AIBLK38



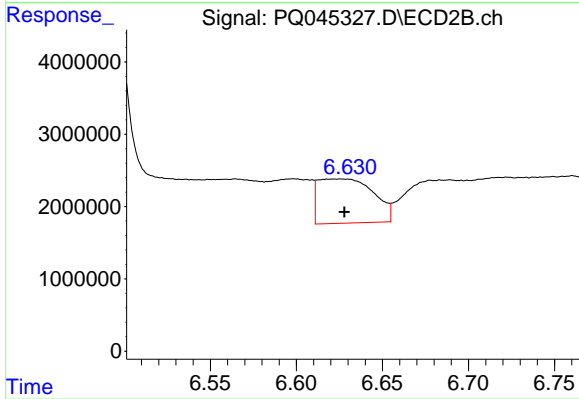
#26 AR-1254-1

R.T.: 6.489 min
 Delta R.T.: 0.019 min
 Response: 95598224
 Conc: 262.79 ng/ml



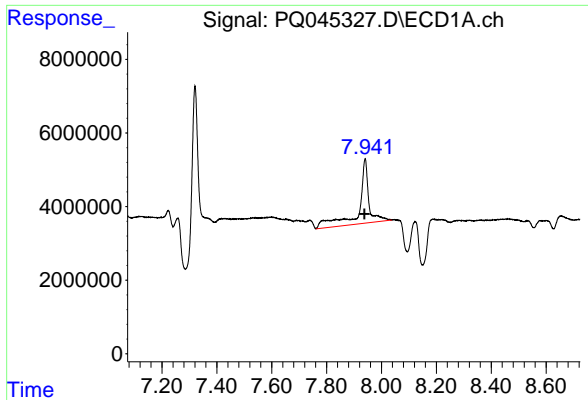
#27 AR-1254-2

R.T.: 0.000 min
 Exp R.T. : 7.556 min
 Response: 0
 Conc: N.D.



#27 AR-1254-2

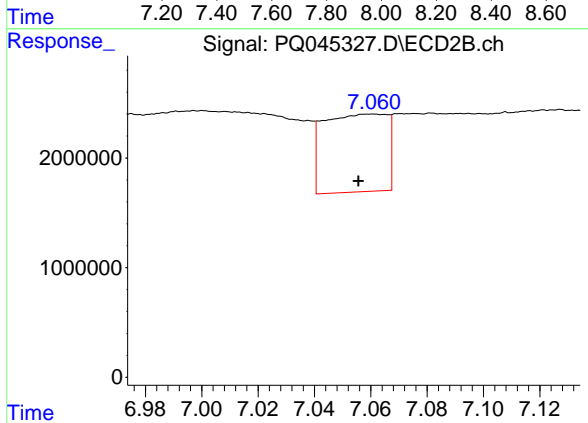
R.T.: 6.625 min
 Delta R.T.: -0.003 min
 Response: 13729999
 Conc: 42.63 ng/ml



#28 AR-1254-3

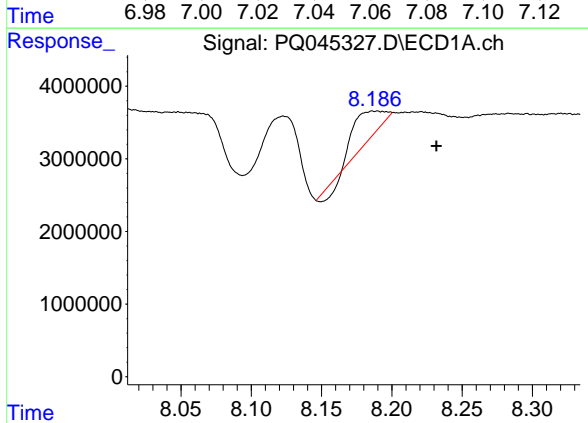
R.T.: 7.941 min
 Delta R.T.: 0.003 min
 Response: 44709226
 Conc: 84.00 ng/ml

Instrument :
 ECD_Q
 ClientSampleId :
 AIBLK38



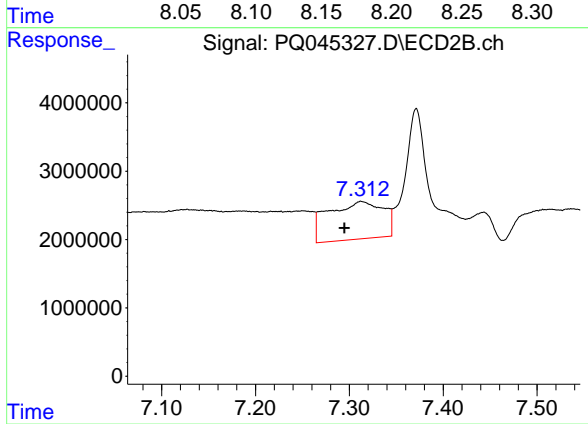
#28 AR-1254-3

R.T.: 7.060 min
 Delta R.T.: 0.005 min
 Response: 11065058
 Conc: 19.95 ng/ml



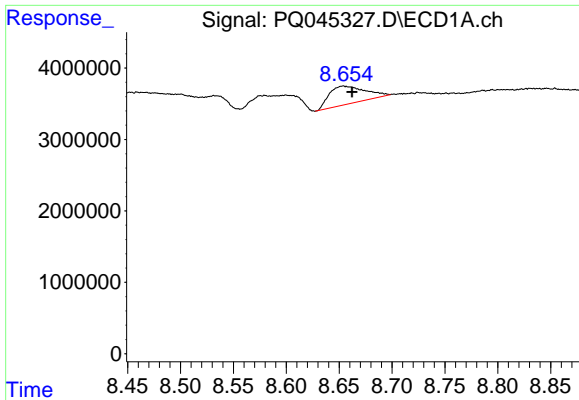
#29 AR-1254-4

R.T.: 8.189 min
 Delta R.T.: -0.043 min
 Response: 5186733
 Conc: 13.43 ng/ml



#29 AR-1254-4

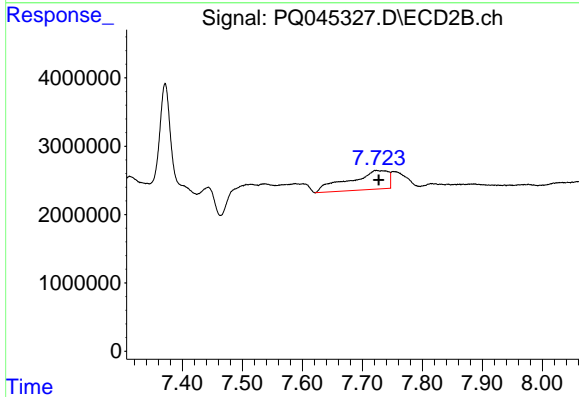
R.T.: 7.313 min
 Delta R.T.: 0.018 min
 Response: 22359296
 Conc: 62.56 ng/ml



#30 AR-1254-5

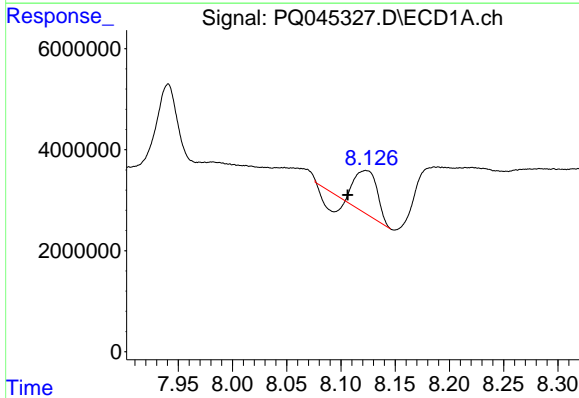
R.T.: 8.654 min
 Delta R.T.: -0.008 min
 Response: 6003397
 Conc: 13.90 ng/ml

Instrument :
 ECD_Q
 ClientSampled :
 AIBLK38



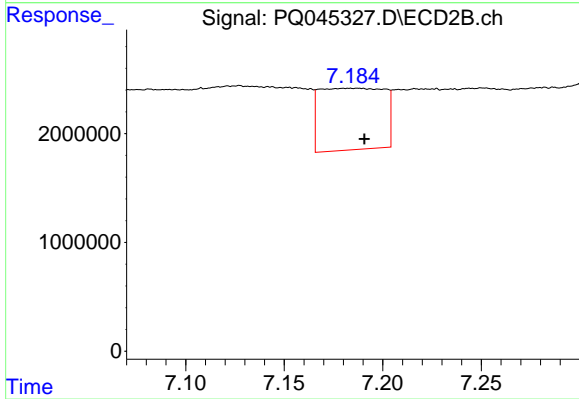
#30 AR-1254-5

R.T.: 7.723 min
 Delta R.T.: -0.005 min
 Response: 12587805
 Conc: 25.17 ng/ml



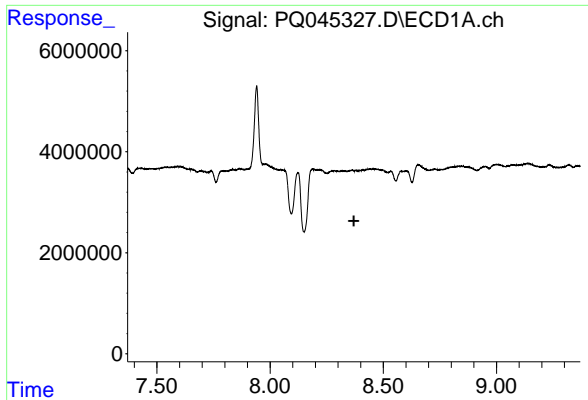
#31 AR-1260-1

R.T.: 8.123 min
 Delta R.T.: 0.017 min
 Response: 9235596
 Conc: 29.57 ng/ml



#31 AR-1260-1

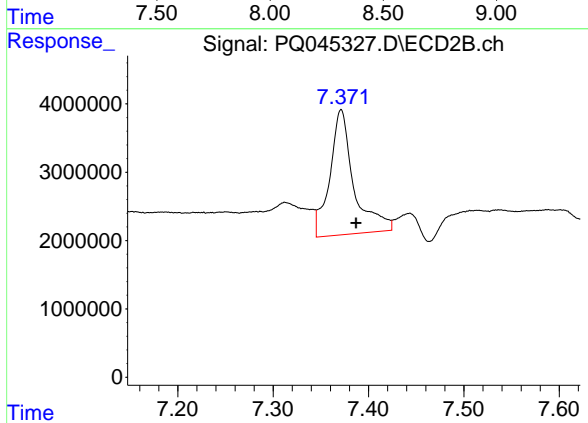
R.T.: 7.188 min
 Delta R.T.: -0.003 min
 Response: 12862318
 Conc: 41.98 ng/ml



#32 AR-1260-2

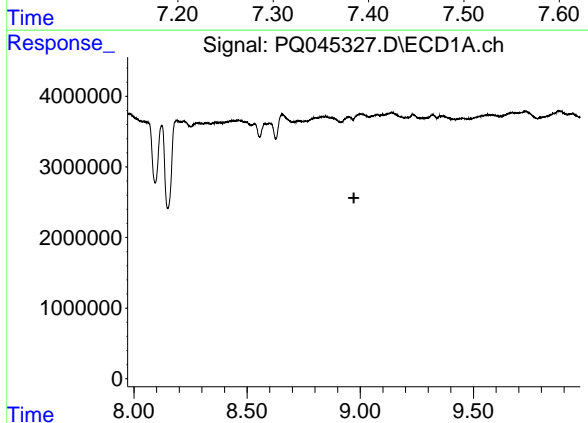
R.T.: 0.000 min
 Exp R.T.: 8.370 min
 Response: 0
 Conc: N.D.

Instrument :
 ECD_Q
 ClientSampled :
 AIBLK38



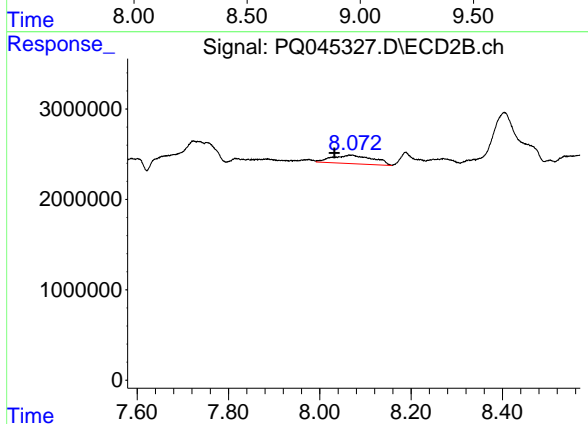
#32 AR-1260-2

R.T.: 7.371 min
 Delta R.T.: -0.016 min
 Response: 32001877
 Conc: 81.05 ng/ml



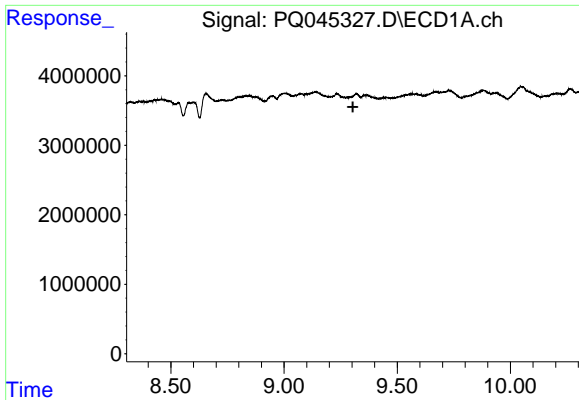
#34 AR-1260-4

R.T.: 0.000 min
 Exp R.T.: 8.972 min
 Response: 0
 Conc: N.D.



#34 AR-1260-4

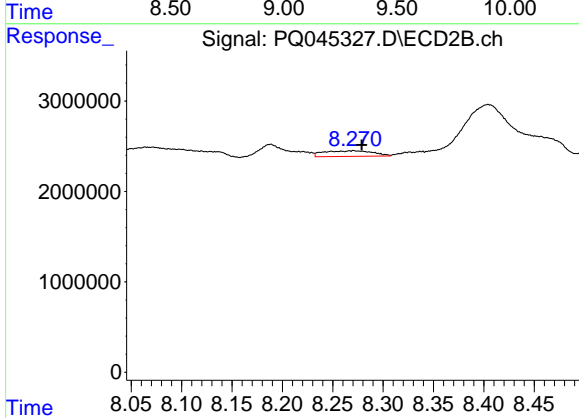
R.T.: 8.065 min
 Delta R.T.: 0.032 min
 Response: 5851573
 Conc: 19.08 ng/ml



#35 AR-1260-5

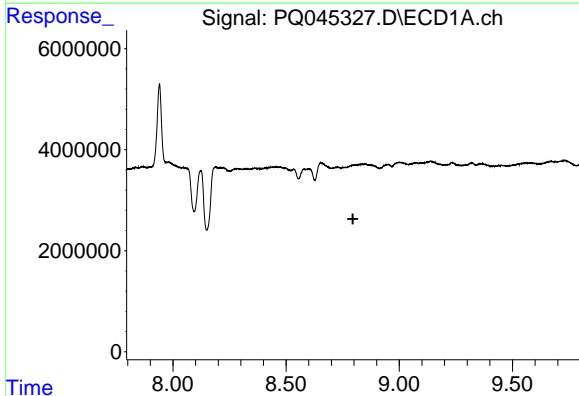
R.T.: 0.000 min
 Exp R.T.: 9.304 min
 Response: 0
 Conc: N.D.

Instrument :
 ECD_Q
 ClientSampleId :
 AIBLK38



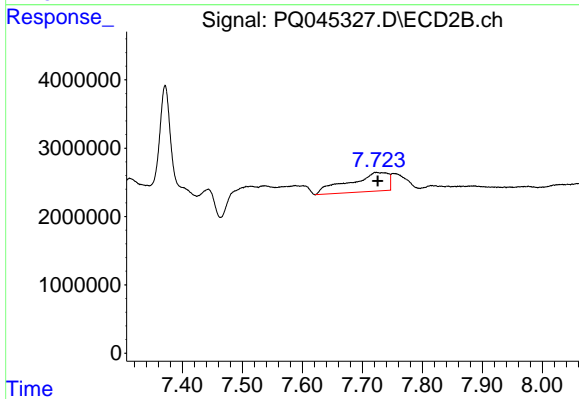
#35 AR-1260-5

R.T.: 8.271 min
 Delta R.T.: -0.008 min
 Response: 2097997
 Conc: 2.68 ng/ml



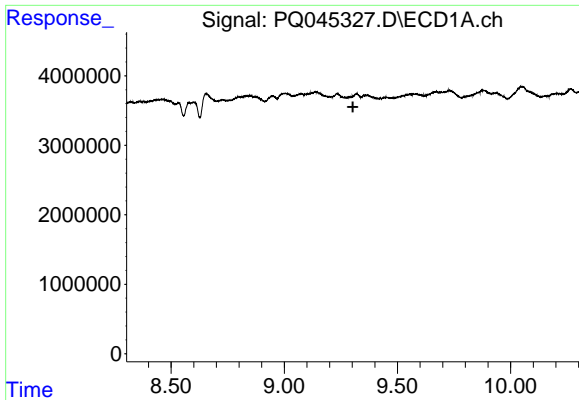
#36 AR-1262-1

R.T.: 0.000 min
 Exp R.T.: 8.795 min
 Response: 0
 Conc: N.D.



#36 AR-1262-1

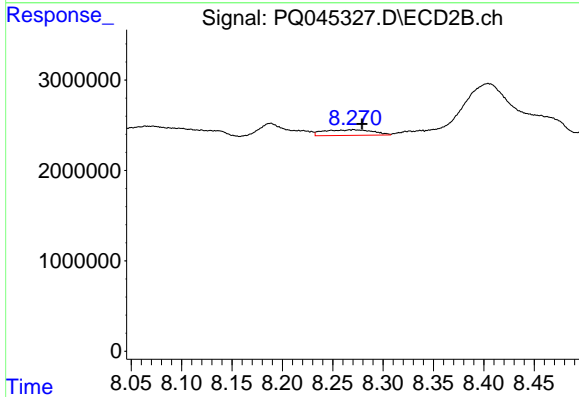
R.T.: 7.723 min
 Delta R.T.: -0.003 min
 Response: 12587805
 Conc: 49.74 ng/ml



#37 AR-1262-2

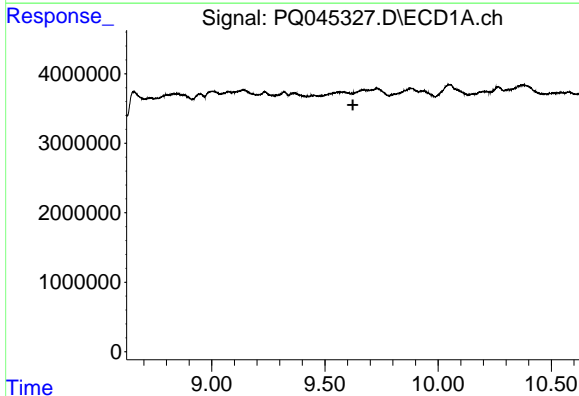
R.T.: 0.000 min
 Exp R.T. : 9.303 min
 Response: 0
 Conc: N.D.

Instrument :
 ECD_Q
 ClientSampleId :
 AIBLK38



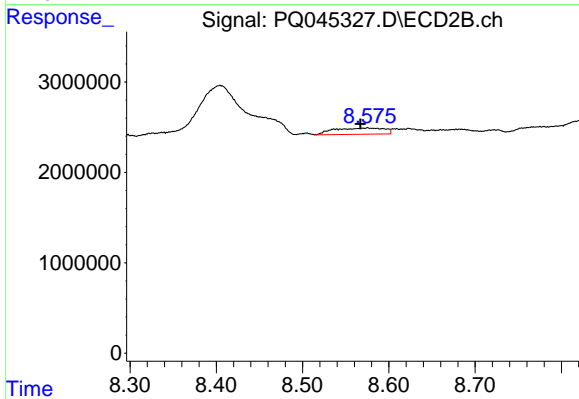
#37 AR-1262-2

R.T.: 8.271 min
 Delta R.T.: -0.008 min
 Response: 2097997
 Conc: 2.13 ng/ml



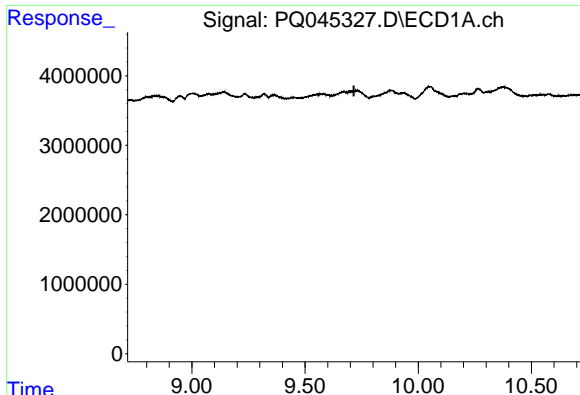
#38 AR-1262-3

R.T.: 0.000 min
 Exp R.T. : 9.623 min
 Response: 0
 Conc: N.D.



#38 AR-1262-3

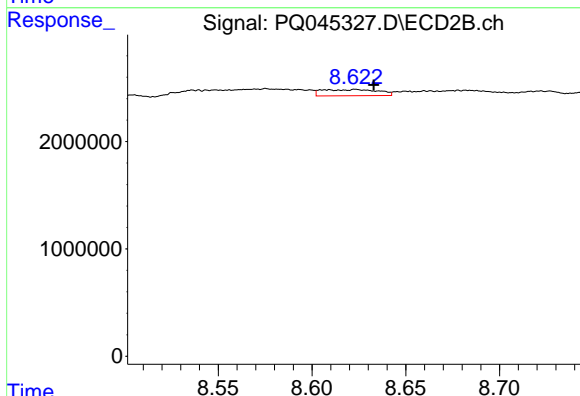
R.T.: 8.576 min
 Delta R.T.: 0.008 min
 Response: 2828303
 Conc: 7.34 ng/ml



#39 AR-1262-4

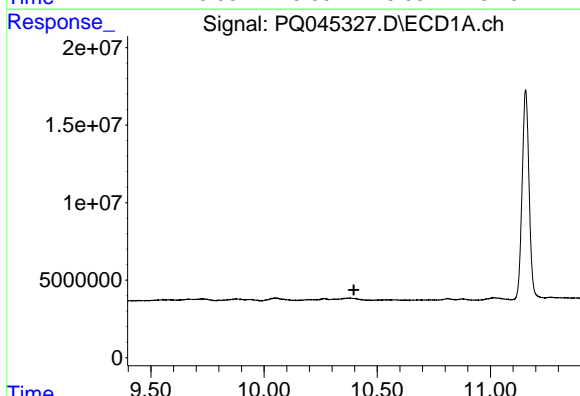
R.T.: 0.000 min
 Exp R.T. : 9.716 min
 Response: 0
 Conc: N.D.

Instrument :
 ECD_Q
 ClientSampleId :
 AIBLK38



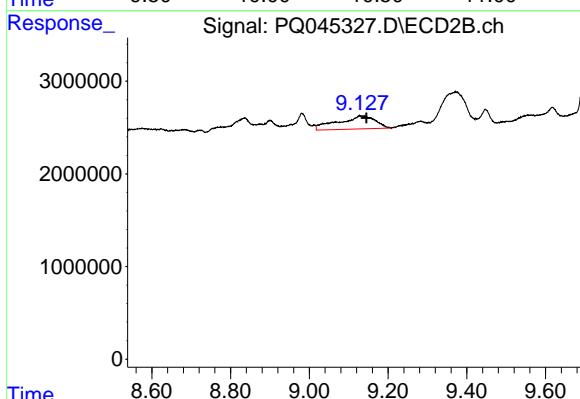
#39 AR-1262-4

R.T.: 8.623 min
 Delta R.T.: -0.010 min
 Response: 1193029
 Conc: 1.62 ng/ml



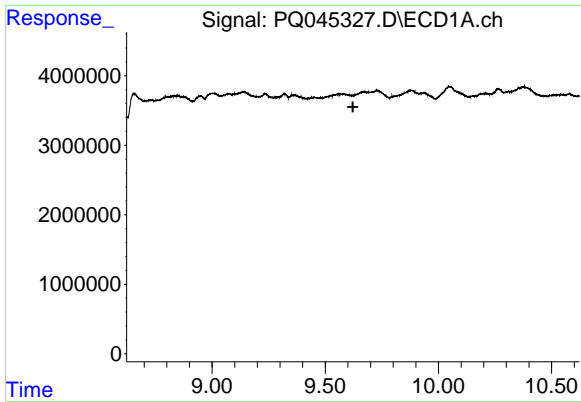
#40 AR-1262-5

R.T.: 0.000 min
 Exp R.T. : 10.397 min
 Response: 0
 Conc: N.D.



#40 AR-1262-5

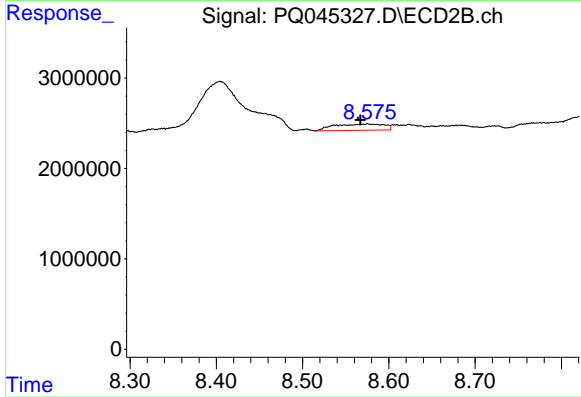
R.T.: 9.127 min
 Delta R.T.: -0.018 min
 Response: 9313495
 Conc: 26.75 ng/ml



#41 AR-1268-1

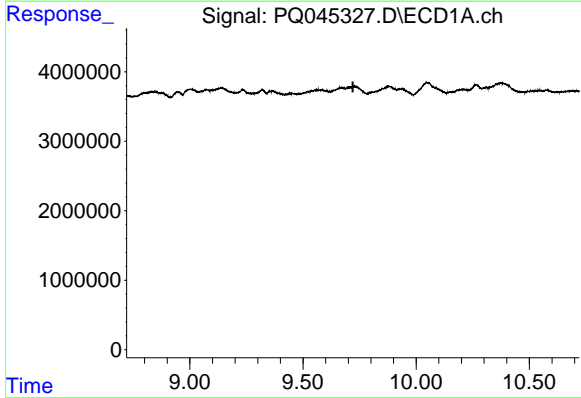
R.T.: 0.000 min
 Exp R.T. : 9.622 min
 Response: 0
 Conc: N.D.

Instrument :
 ECD_Q
 ClientSampleId :
 AIBLK38



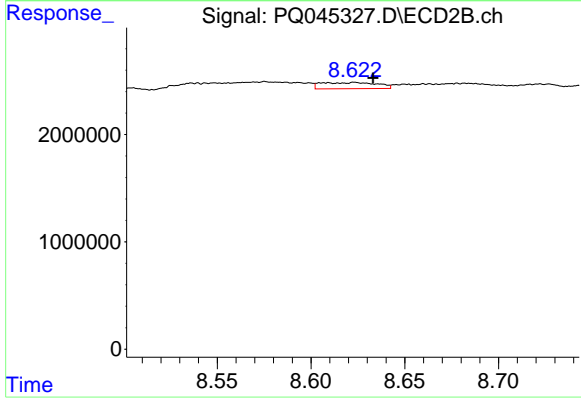
#41 AR-1268-1

R.T.: 8.576 min
 Delta R.T.: 0.009 min
 Response: 2828303
 Conc: 2.35 ng/ml



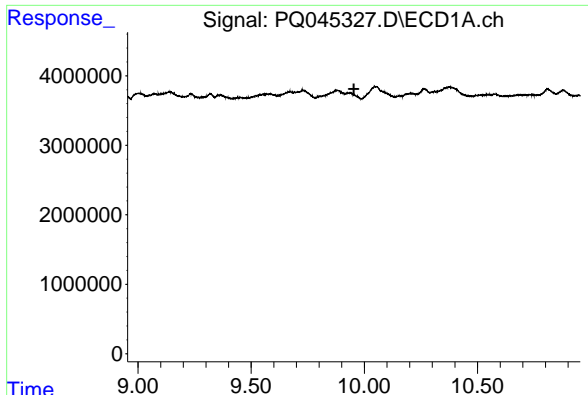
#42 AR-1268-2

R.T.: 0.000 min
 Exp R.T. : 9.720 min
 Response: 0
 Conc: N.D.



#42 AR-1268-2

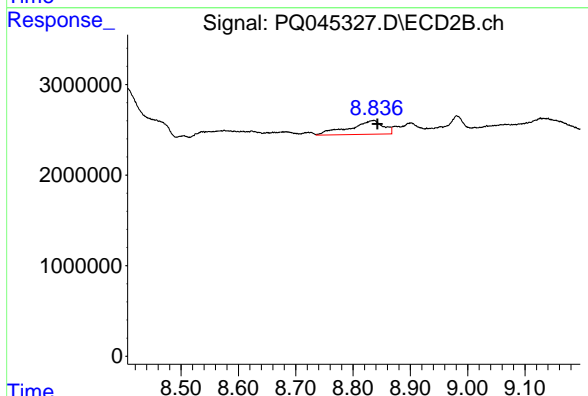
R.T.: 8.623 min
 Delta R.T.: -0.010 min
 Response: 1193029
 Conc: 1.07 ng/ml



#43 AR-1268-3

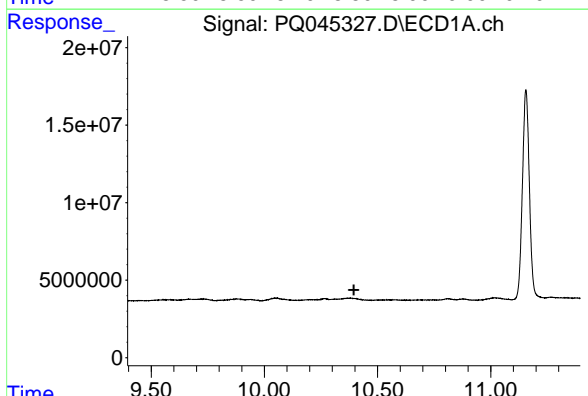
R.T.: 0.000 min
 Exp R.T. : 9.954 min
 Response: 0
 Conc: N.D.

Instrument :
 ECD_Q
 ClientSampleId :
 AIBLK38



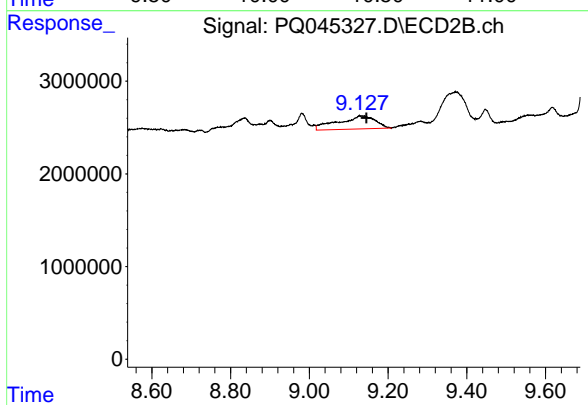
#43 AR-1268-3

R.T.: 8.836 min
 Delta R.T.: -0.006 min
 Response: 6215624
 Conc: 6.68 ng/ml



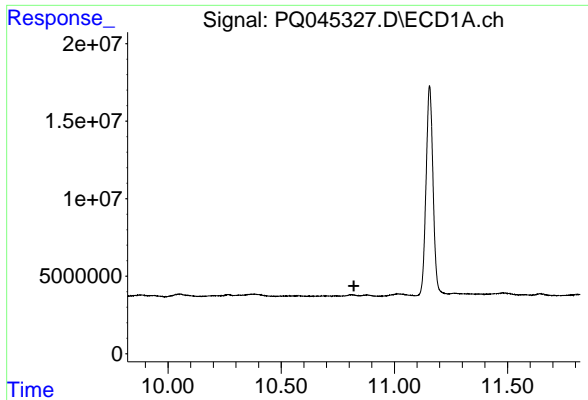
#44 AR-1268-4

R.T.: 0.000 min
 Exp R.T. : 10.395 min
 Response: 0
 Conc: N.D.



#44 AR-1268-4

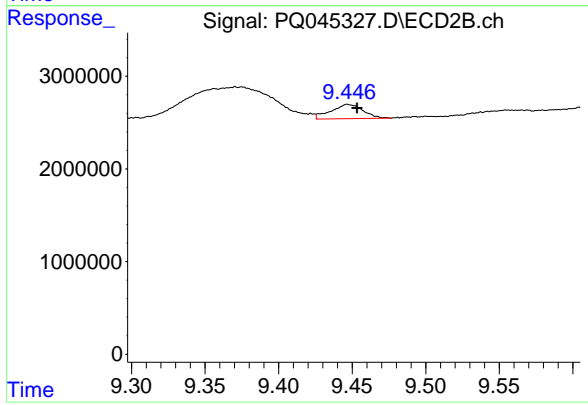
R.T.: 9.127 min
 Delta R.T.: -0.018 min
 Response: 9313495
 Conc: 23.12 ng/ml



#45 AR-1268-5

R.T.: 0.000 min
Exp R.T.: 10.821 min
Response: 0
Conc: N.D.

Instrument :
ECD_Q
ClientSampled :
AIBLK38



#45 AR-1268-5

R.T.: 9.447 min
Delta R.T.: -0.006 min
Response: 2324847
Conc: 0.77 ng/ml