

Data Path : Z:\pestpcbsrv\HPCHEM1\ECD_Q\Data\PQ112123\
 Data File : PQ064293.D
 Signal(s) : Signal #1: ECD1A.ch Signal #2: ECD2B.ch
 Acq On : 21 Nov 2023 21:04
 Operator : YP\AJ
 Sample : AR1660CCC500
 Misc :
 ALS Vial : 3 Sample Multiplier: 1

Instrument :
 ECD_Q
 ClientSampleId :
 AR1660CCC500

Integration File signal 1: autoint1.e
 Integration File signal 2: autoint2.e
 Quant Time: Nov 22 01:03:39 2023
 Quant Method : Z:\pestpcbsrv\HPCHEM1\ECD_Q\Method\PQ110823.M
 Quant Title : GC EXTRACTABLES
 QLast Update : Wed Nov 08 18:43:53 2023
 Response via : Initial Calibration
 Integrator: ChemStation

Volume Inj. : 2 µl
 Signal #1 Phase : ZB-MR1 Signal #2 Phase: ZB-MR2
 Signal #1 Info : 30Mx0.32mmx 0.50µ Signal #2 Info : 30M x 0.32mm x 0.25µm

Compound	RT#1	RT#2	Resp#1	Resp#2	ng/ml	ng/ml

System Monitoring Compounds						
1) SA Tetrachlo...	3.457	2.774	196.5E6	202.5E6	46.103	55.050
2) SA Decachlor...	8.690	7.571	179.5E6	240.8E6	55.582	51.383
Target Compounds						
3) L1 AR-1016-1	4.572	3.783	64036558	63520238	464.673	504.217
4) L1 AR-1016-2	4.591	3.799	96821942	93524252	458.411	516.194
5) L1 AR-1016-3	4.650	3.960	60578894	50227431	454.870	515.418
6) L1 AR-1016-4	4.742	4.009	48618823	42923305	462.427	508.770
7) L1 AR-1016-5	5.032	4.205	49468041	50789583	466.926	507.840
31) L7 AR-1260-1	6.143	5.204	92926476	94646359	453.905	478.509
32) L7 AR-1260-2	6.404	5.395	110.4E6	115.0E6	457.001	481.858
33) L7 AR-1260-3	6.760	5.537	73041714	108.5E6	453.812	480.528
34) L7 AR-1260-4	6.978	6.001	86830455	83993480	470.649	488.160
35) L7 AR-1260-5	7.291	6.249	158.2E6	190.9E6	445.053	478.316

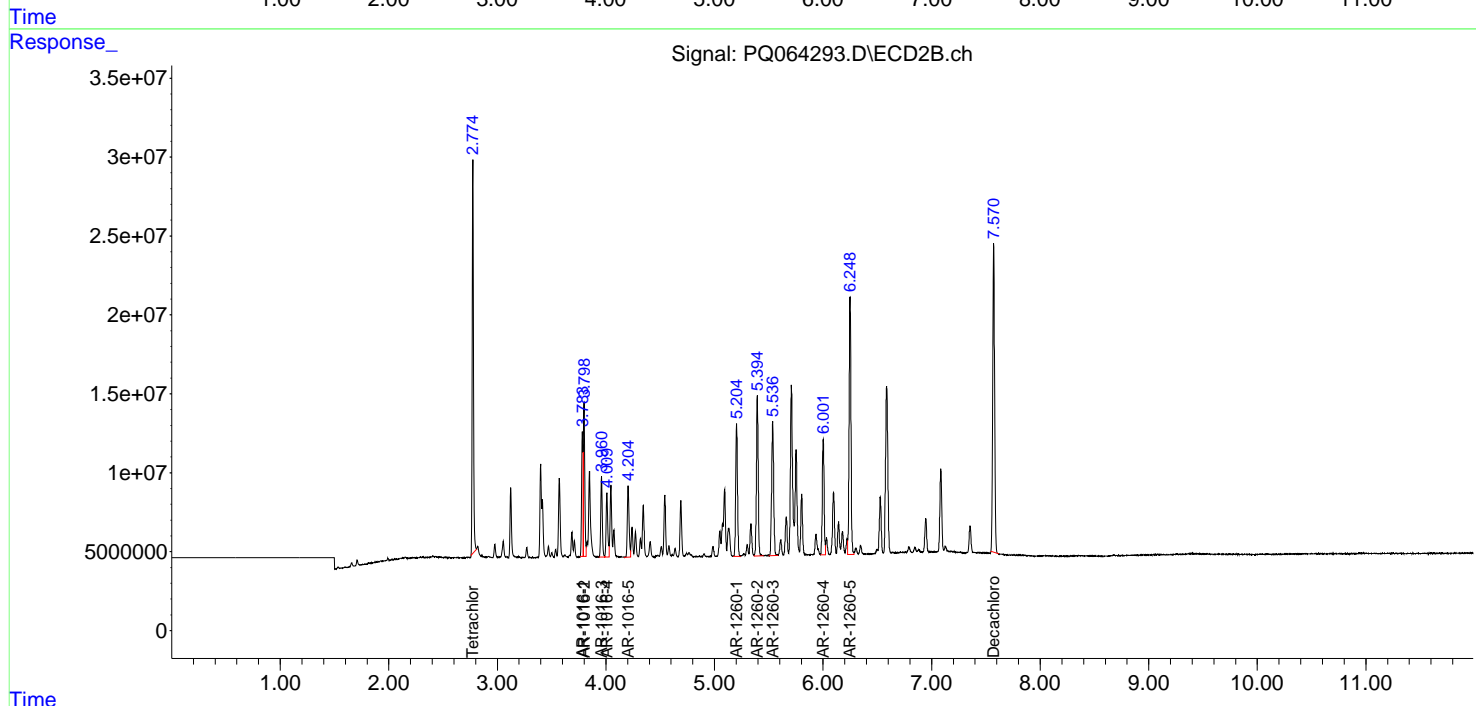
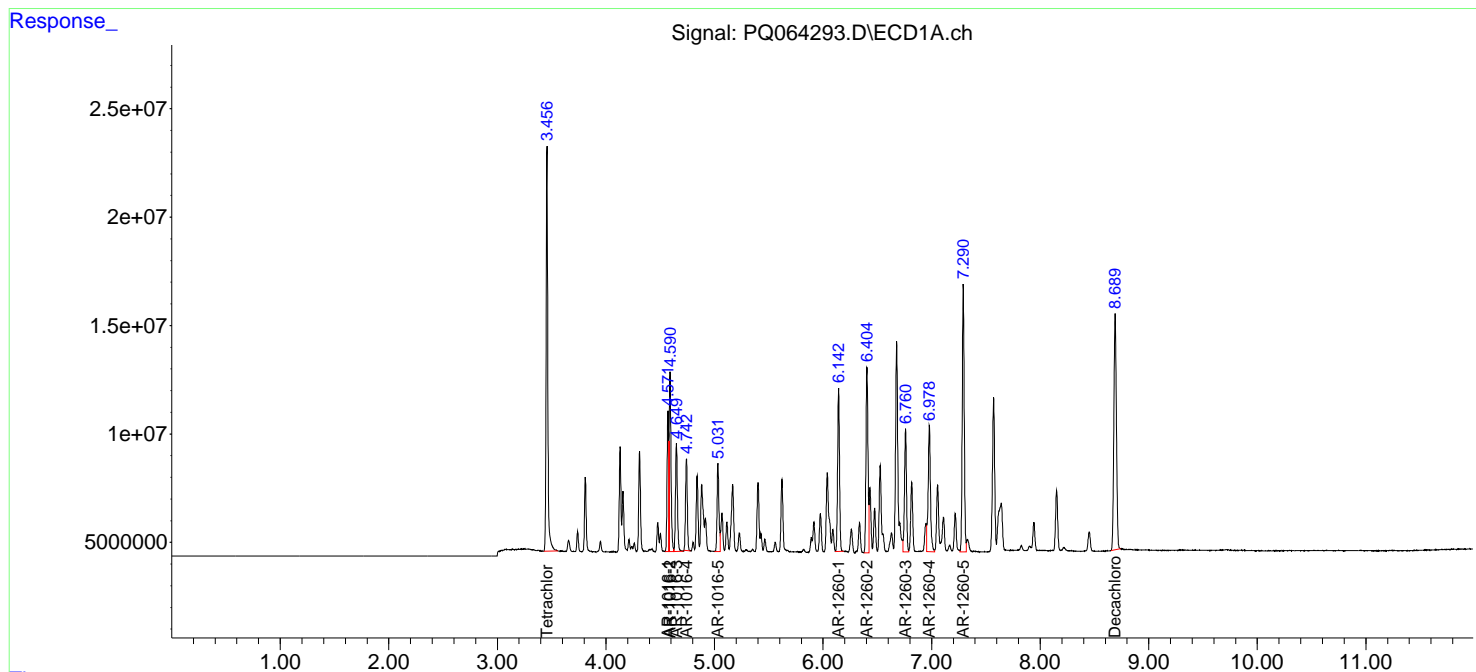
(f)=RT Delta > 1/2 Window (#)=Amounts differ by > 25% (m)=manual int.

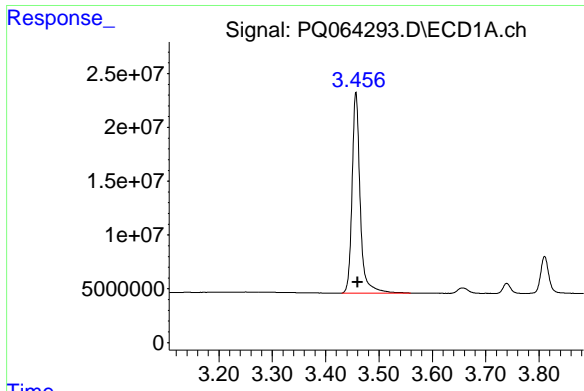
Data Path : Z:\pestpcbsrv\HPCHEM1\ECD_Q\Data\PQ112123\
 Data File : PQ064293.D
 Signal(s) : Signal #1: ECD1A.ch Signal #2: ECD2B.ch
 Acq On : 21 Nov 2023 21:04
 Operator : YP\AJ
 Sample : AR1660CCC500
 Misc :
 ALS Vial : 3 Sample Multiplier: 1

Instrument :
 ECD_Q
 ClientSampleId :
 AR1660CCC500

Integration File signal 1: autoint1.e
 Integration File signal 2: autoint2.e
 Quant Time: Nov 22 01:03:39 2023
 Quant Method : Z:\pestpcbsrv\HPCHEM1\ECD_Q\Method\PQ110823.M
 Quant Title : GC EXTRACTABLES
 QLast Update : Wed Nov 08 18:43:53 2023
 Response via : Initial Calibration
 Integrator: ChemStation

Volume Inj. : 2 µl
 Signal #1 Phase : ZB-MR1 Signal #2 Phase: ZB-MR2
 Signal #1 Info : 30Mx0.32mmx 0.50µ Signal #2 Info : 30M x 0.32mm x 0.25µm

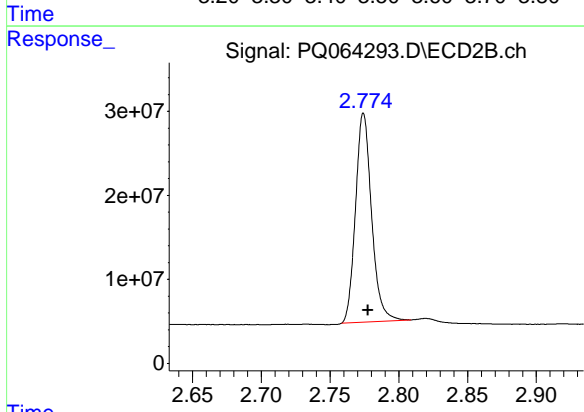




#1 Tetrachloro-m-xylene

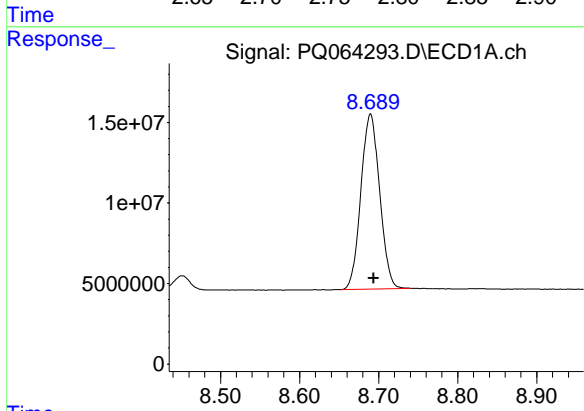
R.T.: 3.457 min
Delta R.T.: -0.003 min
Response: 196512309
Conc: 46.10 ng/ml

Instrument :
ECD_Q
ClientSampleId :
AR1660CCC500



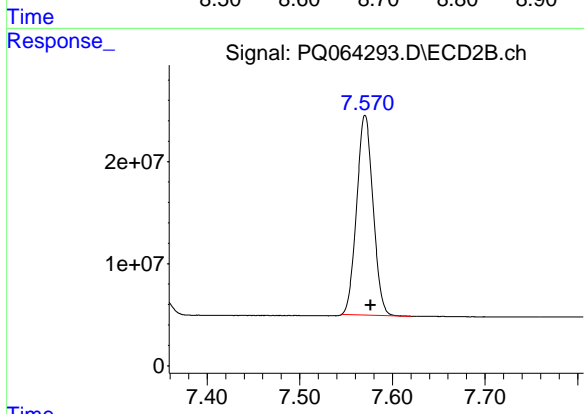
#1 Tetrachloro-m-xylene

R.T.: 2.774 min
Delta R.T.: -0.003 min
Response: 202456496
Conc: 55.05 ng/ml



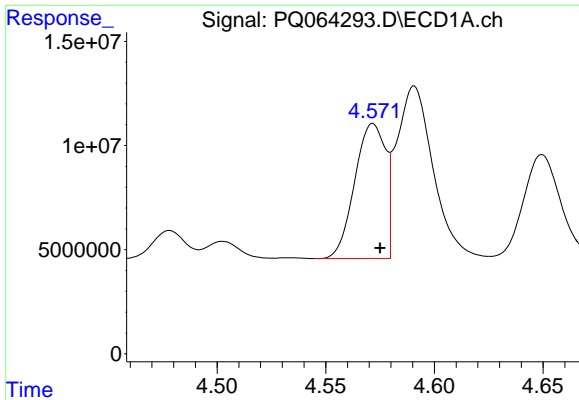
#2 Decachlorobiphenyl

R.T.: 8.690 min
Delta R.T.: -0.004 min
Response: 179453474
Conc: 55.58 ng/ml



#2 Decachlorobiphenyl

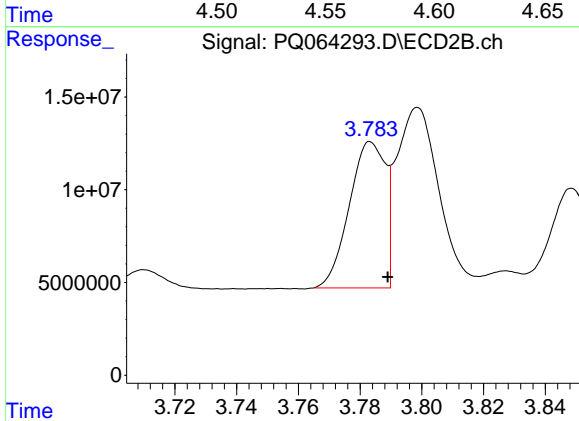
R.T.: 7.571 min
Delta R.T.: -0.006 min
Response: 240752434
Conc: 51.38 ng/ml



#3 AR-1016-1

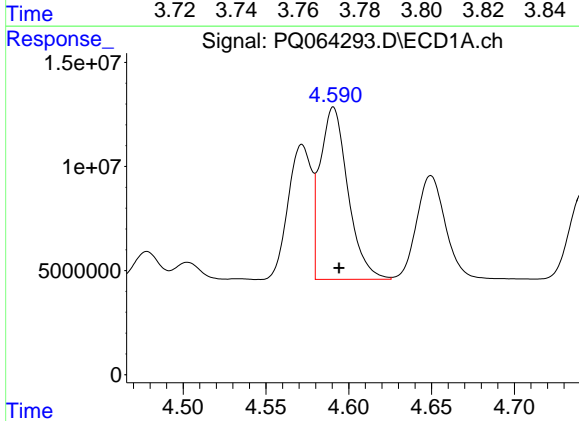
R.T.: 4.572 min
 Delta R.T.: -0.003 min
 Response: 64036558
 Conc: 464.67 ng/ml

Instrument :
 ECD_Q
 ClientSampleId :
 AR1660CCC500



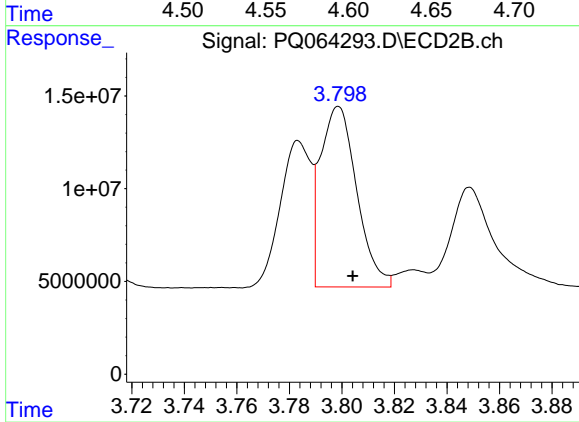
#3 AR-1016-1

R.T.: 3.783 min
 Delta R.T.: -0.006 min
 Response: 63520238
 Conc: 504.22 ng/ml



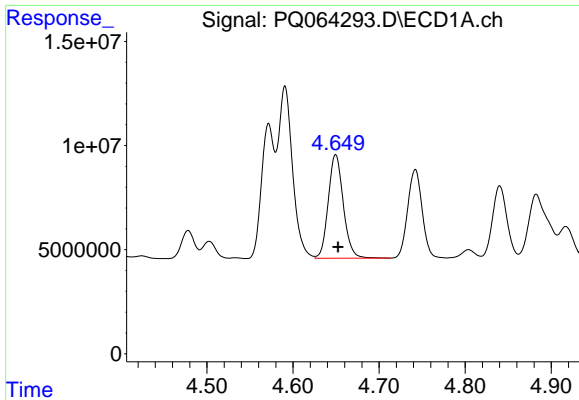
#4 AR-1016-2

R.T.: 4.591 min
 Delta R.T.: -0.003 min
 Response: 96821942
 Conc: 458.41 ng/ml



#4 AR-1016-2

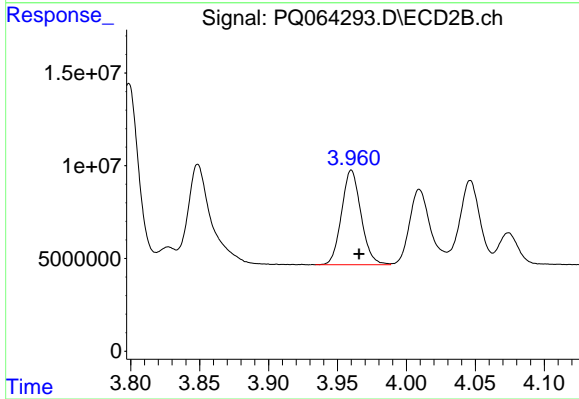
R.T.: 3.799 min
 Delta R.T.: -0.005 min
 Response: 93524252
 Conc: 516.19 ng/ml



#5 AR-1016-3

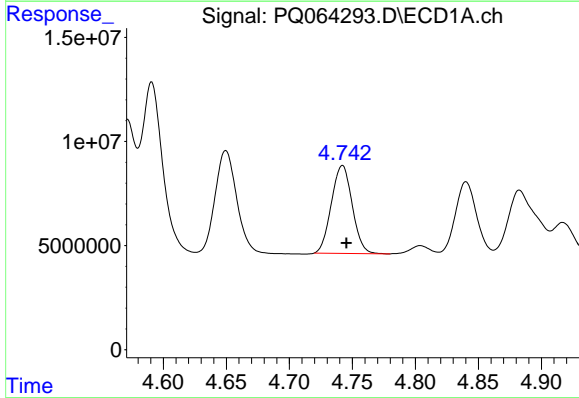
R.T.: 4.650 min
 Delta R.T.: -0.003 min
 Response: 60578894
 Conc: 454.87 ng/ml

Instrument :
 ECD_Q
 ClientSampleId :
 AR1660CCC500



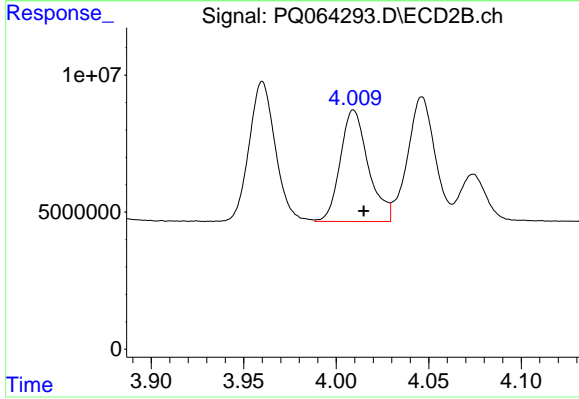
#5 AR-1016-3

R.T.: 3.960 min
 Delta R.T.: -0.005 min
 Response: 50227431
 Conc: 515.42 ng/ml



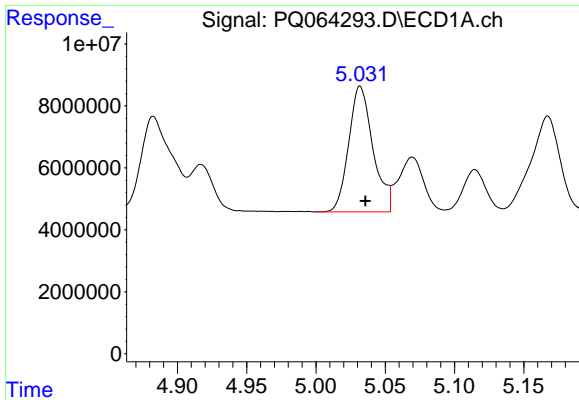
#6 AR-1016-4

R.T.: 4.742 min
 Delta R.T.: -0.003 min
 Response: 48618823
 Conc: 462.43 ng/ml



#6 AR-1016-4

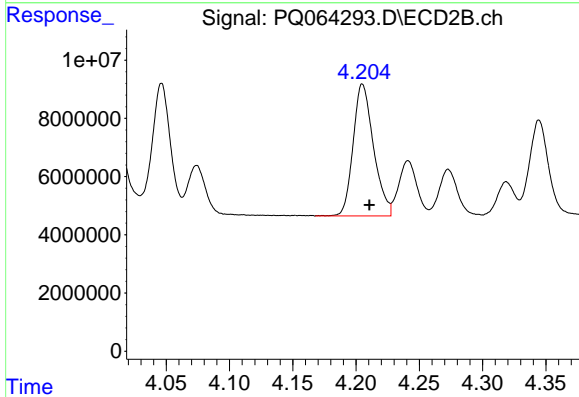
R.T.: 4.009 min
 Delta R.T.: -0.005 min
 Response: 42923305
 Conc: 508.77 ng/ml



#7 AR-1016-5

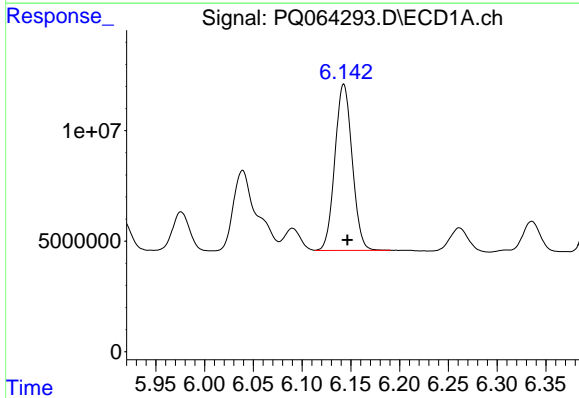
R.T.: 5.032 min
 Delta R.T.: -0.004 min
 Response: 49468041
 Conc: 466.93 ng/ml

Instrument :
 ECD_Q
 ClientSampleId :
 AR1660CCC500



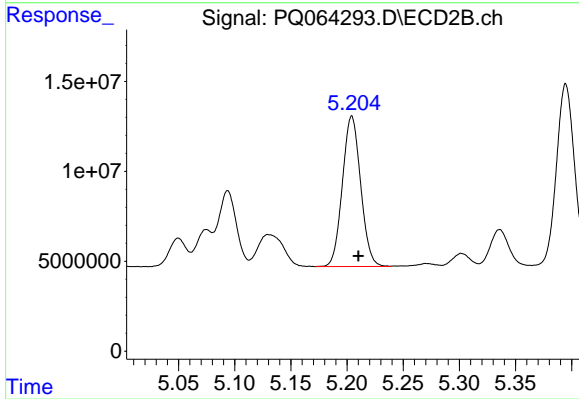
#7 AR-1016-5

R.T.: 4.205 min
 Delta R.T.: -0.006 min
 Response: 50789583
 Conc: 507.84 ng/ml



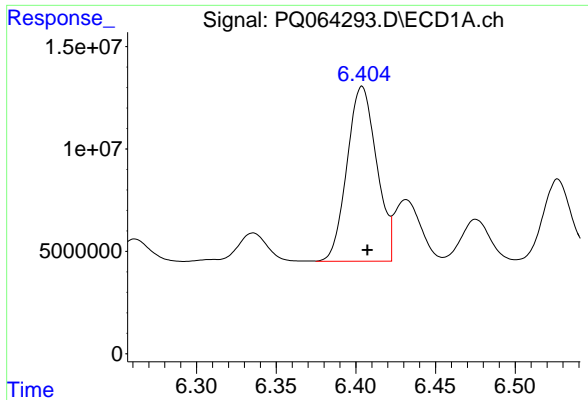
#31 AR-1260-1

R.T.: 6.143 min
 Delta R.T.: -0.004 min
 Response: 92926476
 Conc: 453.90 ng/ml



#31 AR-1260-1

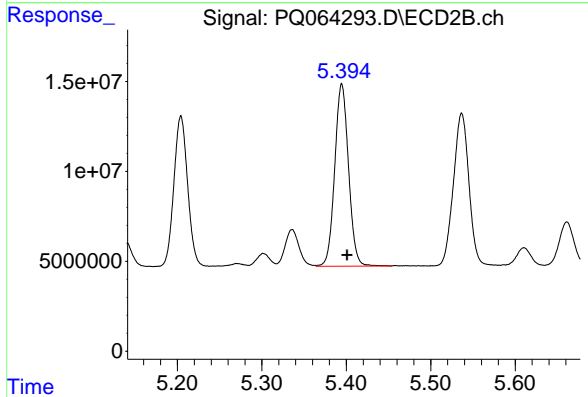
R.T.: 5.204 min
 Delta R.T.: -0.006 min
 Response: 94646359
 Conc: 478.51 ng/ml



#32 AR-1260-2

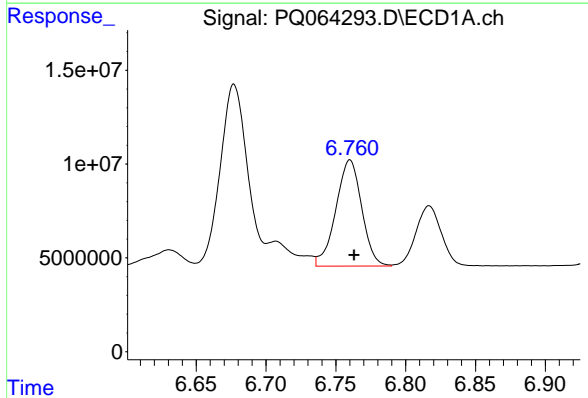
R.T.: 6.404 min
 Delta R.T.: -0.003 min
 Response: 110394573
 Conc: 457.00 ng/ml

Instrument :
 ECD_Q
 ClientSampleId :
 AR1660CCC500



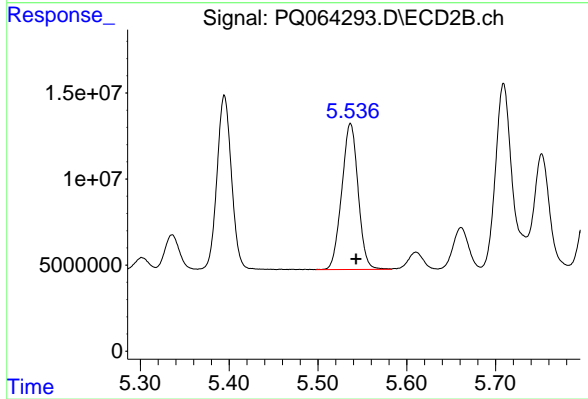
#32 AR-1260-2

R.T.: 5.395 min
 Delta R.T.: -0.006 min
 Response: 115035632
 Conc: 481.86 ng/ml



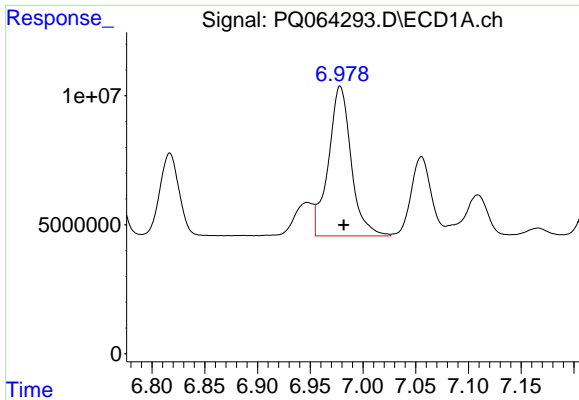
#33 AR-1260-3

R.T.: 6.760 min
 Delta R.T.: -0.003 min
 Response: 73041714
 Conc: 453.81 ng/ml



#33 AR-1260-3

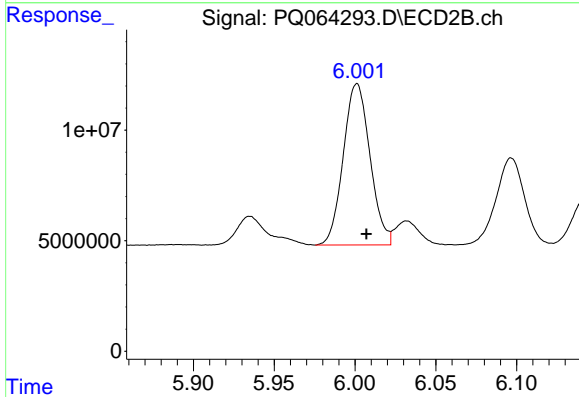
R.T.: 5.537 min
 Delta R.T.: -0.006 min
 Response: 108539763
 Conc: 480.53 ng/ml



#34 AR-1260-4

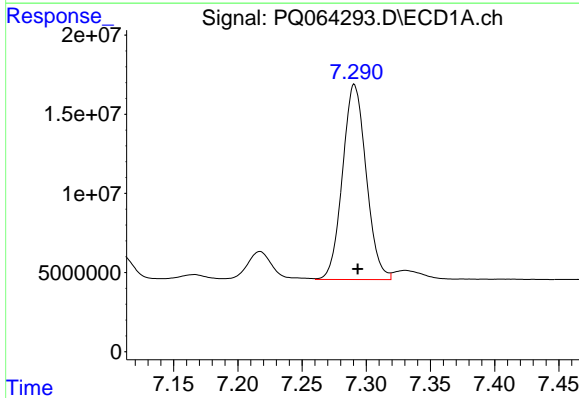
R.T.: 6.978 min
 Delta R.T.: -0.003 min
 Response: 86830455
 Conc: 470.65 ng/ml

Instrument :
 ECD_Q
 ClientSampleId :
 AR1660CCC500



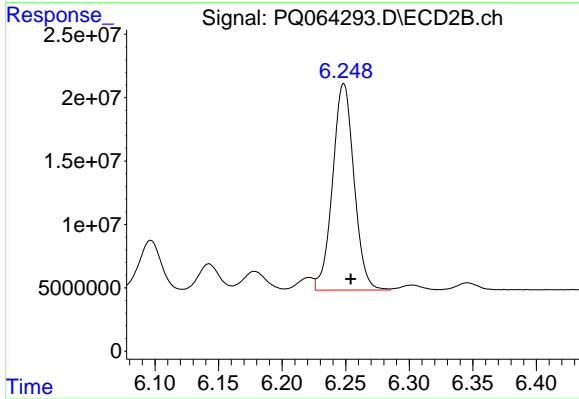
#34 AR-1260-4

R.T.: 6.001 min
 Delta R.T.: -0.006 min
 Response: 83993480
 Conc: 488.16 ng/ml



#35 AR-1260-5

R.T.: 7.291 min
 Delta R.T.: -0.003 min
 Response: 158167523
 Conc: 445.05 ng/ml



#35 AR-1260-5

R.T.: 6.249 min
 Delta R.T.: -0.006 min
 Response: 190880975
 Conc: 478.32 ng/ml