

Data Path : Z:\pestpcbsrv\HPCHEM1\ECD_Q\Data\PQ112123\
 Data File : PQ064294.D
 Signal(s) : Signal #1: ECD1A.ch Signal #2: ECD2B.ch
 Acq On : 21 Nov 2023 21:19
 Operator : YP\AJ
 Sample : I.BLK
 Misc :
 ALS Vial : 2 Sample Multiplier: 1

Instrument :
 ECD_Q
ClientSampleId :
 I.BLK

Manual Integrations
APPROVED

Reviewed By :Yogesh Patel 11/22/2023
 Supervised By :Ankita Jodhani 11/22/2023

Integration File signal 1: autoint1.e
 Integration File signal 2: autoint2.e
 Quant Time: Nov 22 01:04:26 2023
 Quant Method : Z:\pestpcbsrv\HPCHEM1\ECD_Q\Method\PQ110823.M
 Quant Title : GC EXTRACTABLES
 QLast Update : Wed Nov 08 18:43:53 2023
 Response via : Initial Calibration
 Integrator: ChemStation

Volume Inj. : 2 µl
 Signal #1 Phase : ZB-MR1 Signal #2 Phase: ZB-MR2
 Signal #1 Info : 30Mx0.32mmx 0.50µ Signal #2 Info : 30M x 0.32mm x 0.25µm

Compound	RT#1	RT#2	Resp#1	Resp#2	ng/ml	ng/ml

System Monitoring Compounds						
1) SA Tetrachlo...	3.457	2.774	83152348	87972179	19.508	23.921
2) SA Decachlor...	8.690	7.569	64855175	88244319	20.087	18.834m

Target Compounds

(f)=RT Delta > 1/2 Window (#)=Amounts differ by > 25% (m)=manual int.

Data Path : Z:\pestpcbsrv\HPCHEM1\ECD_Q\Data\PQ112123\
 Data File : PQ064294.D
 Signal(s) : Signal #1: ECD1A.ch Signal #2: ECD2B.ch
 Acq On : 21 Nov 2023 21:19
 Operator : YP\AJ
 Sample : I.BLK
 Misc :
 ALS Vial : 2 Sample Multiplier: 1

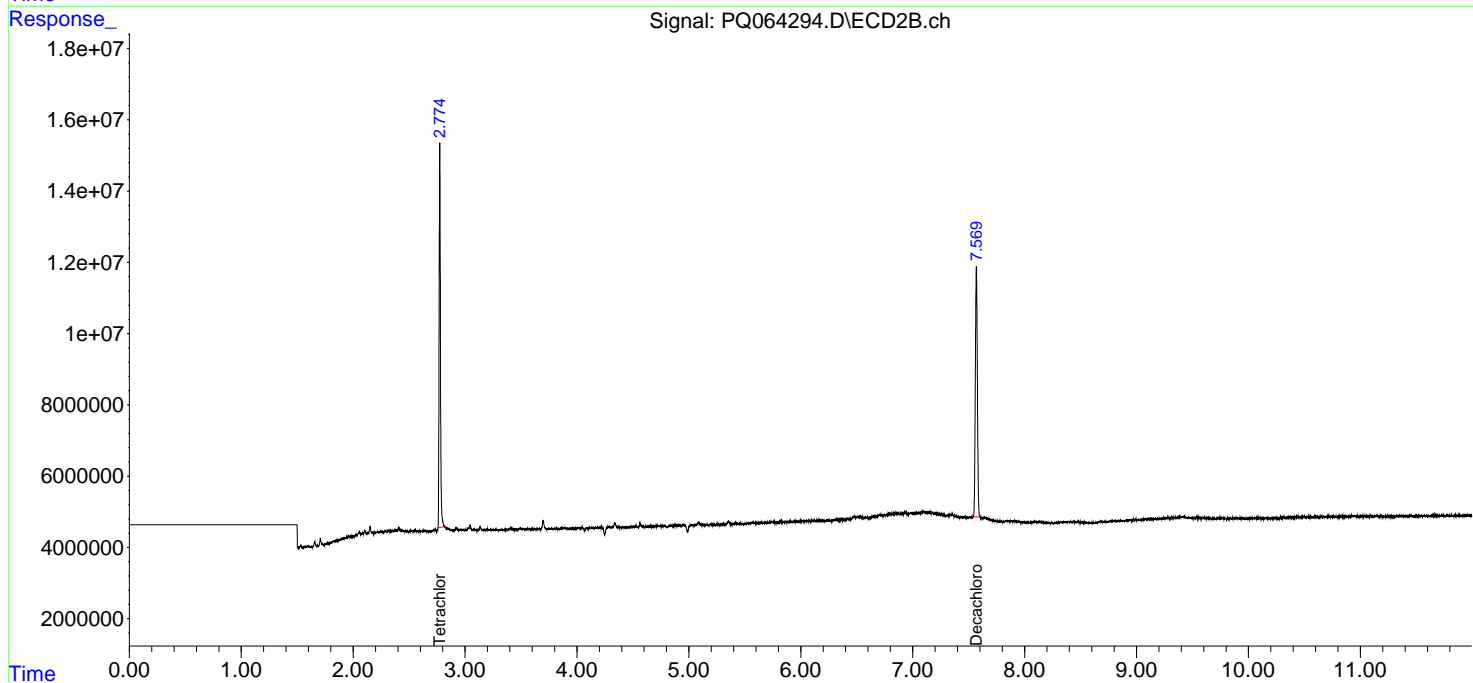
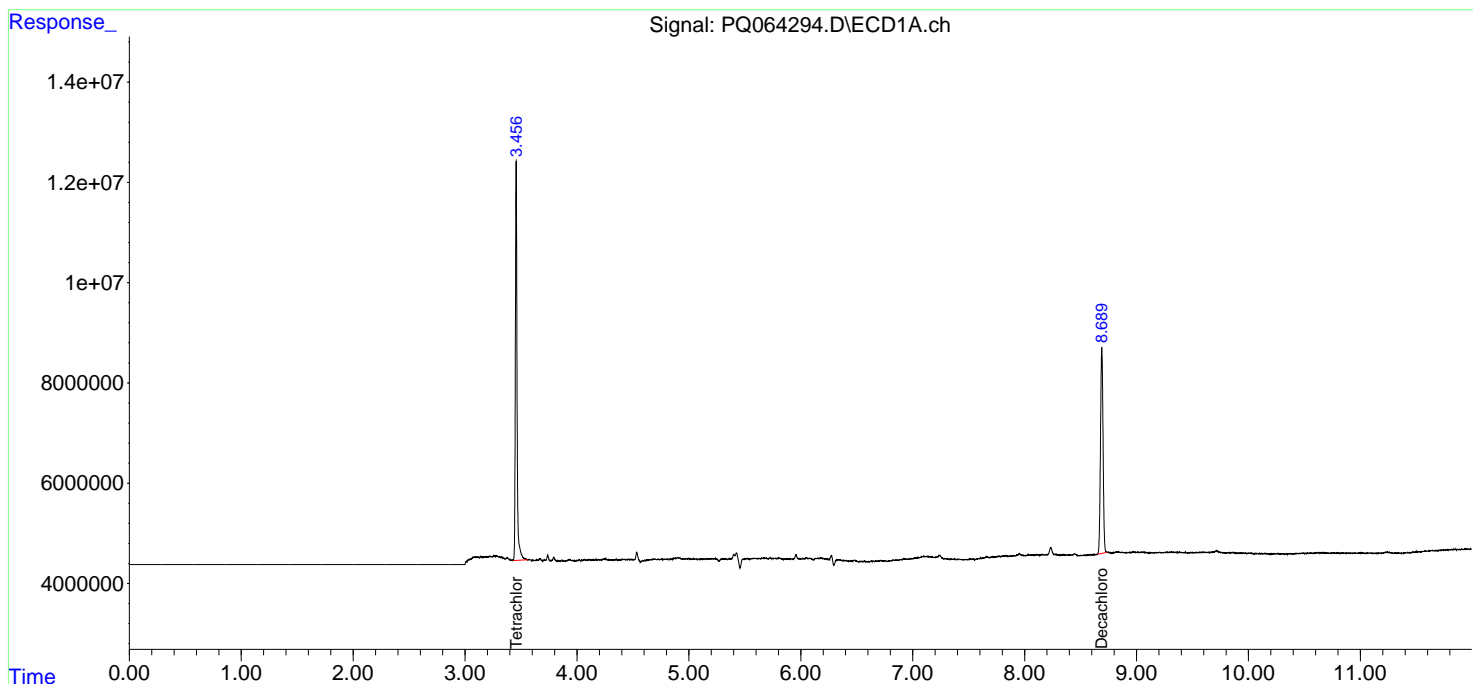
Instrument :
 ECD_Q
ClientSampleId :
 I.BLK

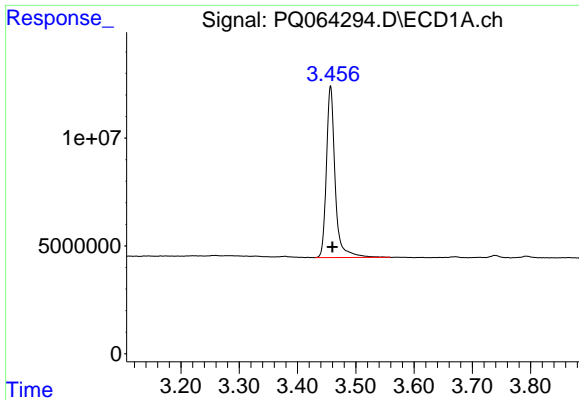
Manual Integrations
APPROVED

Reviewed By :Yogesh Patel 11/22/2023
 Supervised By :Ankita Jodhani 11/22/2023

Integration File signal 1: autoint1.e
 Integration File signal 2: autoint2.e
 Quant Time: Nov 22 01:04:26 2023
 Quant Method : Z:\pestpcbsrv\HPCHEM1\ECD_Q\Method\PQ110823.M
 Quant Title : GC EXTRACTABLES
 QLast Update : Wed Nov 08 18:43:53 2023
 Response via : Initial Calibration
 Integrator: ChemStation

Volume Inj. : 2 µl
 Signal #1 Phase : ZB-MR1 Signal #2 Phase: ZB-MR2
 Signal #1 Info : 30Mx0.32mmx 0.50µ Signal #2 Info : 30M x 0.32mm x 0.25µm





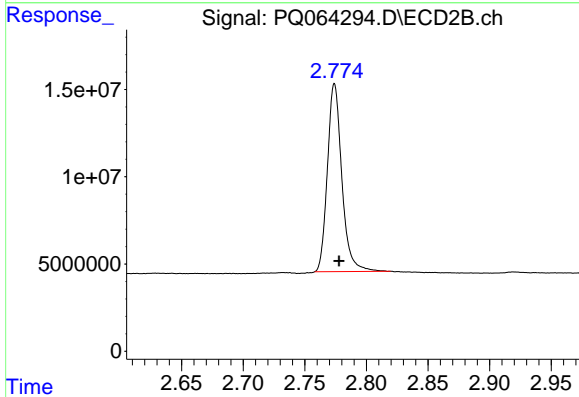
#1 Tetrachloro-m-xylene

R.T.: 3.457 min
 Delta R.T.: -0.003 min
 Response: 83152348
 Conc: 19.51 ng/ml

Instrument :
 ECD_Q
 ClientSampleId :
 I.BLK

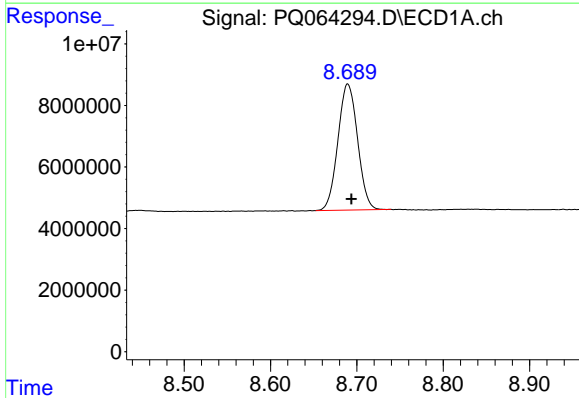
Manual Integrations
 APPROVED

Reviewed By :Yogesh Patel 11/22/2023
 Supervised By :Ankita Jodhani 11/22/2023



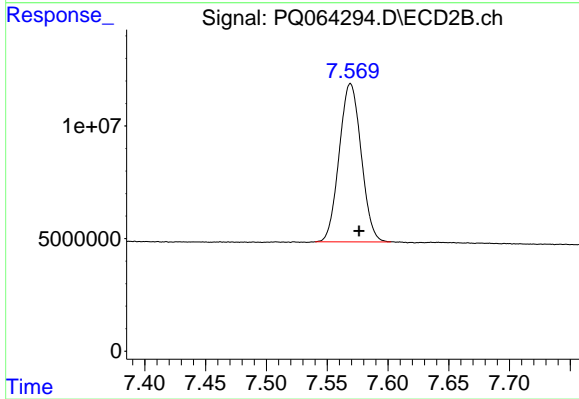
#1 Tetrachloro-m-xylene

R.T.: 2.774 min
 Delta R.T.: -0.004 min
 Response: 87972179
 Conc: 23.92 ng/ml



#2 Decachlorobiphenyl

R.T.: 8.690 min
 Delta R.T.: -0.004 min
 Response: 64855175
 Conc: 20.09 ng/ml



#2 Decachlorobiphenyl

R.T.: 7.569 min
 Delta R.T.: -0.008 min
 Response: 88244319
 Conc: 18.83 ng/ml m