

Data Path : Z:\pestpcbsrv\HPCHEM1\ECD_Q\Data\PQ112420\
 Data File : PQ051204.D
 Signal(s) : Signal #1: ECD1A.ch Signal #2: ECD2B.ch
 Acq On : 24 Nov 2020 13:06
 Operator : DD\AJ
 Sample : L4855-07
 Misc :
 ALS Vial : 20 Sample Multiplier: 1

Instrument :
 ECD_Q
 ClientSampleId :
 CB7Z3

Integration File signal 1: autoint1.e
 Integration File signal 2: autoint2.e
 Quant Time: Nov 25 01:14:29 2020
 Quant Method : Z:\pestpcbsrv\HPCHEM1\ECD_Q\Method\PQ111820CLP.M
 Quant Title : GC EXTRACTABLES
 QLast Update : Thu Nov 19 05:59:02 2020
 Response via : Initial Calibration
 Integrator: ChemStation

Volume Inj. : 1 µl
 Signal #1 Phase : ZB MR1 Signal #2 Phase: ZB MR2
 Signal #1 Info : 30Mx0.32mmx 0.5µm Signal #2 Info : 30M x 0.32mm x 0.25µm

Compound	RT#1	RT#2	Resp#1	Resp#2	ng/ml	ng/ml

System Monitoring Compounds						
1) SA Tetrachlo...	5.235	4.254	447.5E6	124.1E6	19.762	20.823
2) SA Decachlor...	11.433	9.612	731.0E6	237.7E6	44.551	46.543
Target Compounds						
3) L1 AR-1016-1	6.582	5.511	23397683	-64527	31.122	N.D. #
4) L1 AR-1016-2	6.582	5.548	23397683	250.0E6	21.525	838.762 #
5) L1 AR-1016-3	6.660	5.726	20844359	4541941	32.414	29.687
6) L1 AR-1016-4	6.760	5.793	16934500	5148807	31.266	42.440 #
7) L1 AR-1016-5	7.082	6.023	62681617	37078844	120.405	237.058 #
8) L2 AR-1221-1	0.000	4.521	0	1955289	N.D.	31.782 #
9) L2 AR-1221-2	5.589	4.612	13696383	4457619	89.221	104.213
10) L2 AR-1221-3	5.687	4.682	15056406	11976614	28.809	81.663 #
11) L3 AR-1232-1	5.687	4.682	15056406	11976614	35.325	100.590 #
12) L3 AR-1232-2	6.240	5.548	98716791	250.0E6	439.226	2006.837 #
13) L3 AR-1232-3	6.582	5.726	23397683	4541941	50.383	71.572 #
14) L3 AR-1232-4	6.760	5.845	16934500	11863900	73.030	215.211 #
15) L3 AR-1232-5	6.859	6.023	29687232	37078844	177.605	620.103 #
16) L4 AR-1242-1	6.582	5.511	23397683	-64527	38.703	N.D. #
17) L4 AR-1242-2	6.582	5.548	23397683	250.0E6	27.027	1070.529 #
18) L4 AR-1242-3	6.660	5.726	20844359	4541941	40.360	37.542
19) L4 AR-1242-4	6.760	5.845	16934500	11863900	39.259	101.688 #
20) L4 AR-1242-5	7.567	6.398	164.0E6	279.1E6	349.690	1764.168 #
21) L5 AR-1248-1	6.582	5.511	23397683	-64527	54.257	N.D. #
22) L5 AR-1248-2	6.859	5.793	29687232	5148807	49.296	31.265 #
23) L5 AR-1248-3	7.082	5.845	62681617	11863900	90.269	69.512
24) L5 AR-1248-4	7.511	6.023	3770.6E6	37078844	4655.080	179.699 #
25) L5 AR-1248-5	7.567	6.427	164.0E6	52881074	208.801	246.546
26) L6 AR-1254-1	7.455	6.398	336.9E6	279.1E6	392.899	779.305 #
27) L6 AR-1254-2	7.715	6.549	851.3E6	40522437	638.702	130.789 #
28) L6 AR-1254-3	8.096	6.973	483.8E6	30672799	334.100	59.358 #
29) L6 AR-1254-4	8.362	7.225	280.4E6	39281504	267.700	120.669 #
30) L6 AR-1254-5	8.802	7.639	114.4E6	78130382	103.730	172.184 #
31) L7 AR-1260-1	8.256	7.095	194.1E6	20252908	222.771	65.807 #
32) L7 AR-1260-2	8.515	7.304	2197.5E6	52198940	2145.437	134.527 #
33) L7 AR-1260-3	8.878	7.463	108.9E6	35384985	147.257	97.951 #
34) L7 AR-1260-4	9.109	7.949	122.1E6	48693843	144.644	155.454
35) L7 AR-1260-5	9.467	8.190	79510646	33710181	45.208	42.910
36) L8 AR-1262-1	8.878	7.639	108.9E6	78130382	85.646	335.885 #
37) L8 AR-1262-2	9.467	8.190	79510646	33710181	35.016	39.178
38) L8 AR-1262-3	9.798	8.478	-541903	16009084	N.D.	51.081 #
39) L8 AR-1262-4	9.857f	8.542	19796084	32770589	34.424	53.390 #
40) L8 AR-1262-5	10.619	9.046	16631333	13464859	20.661	48.456 #
41) L9 AR-1268-1	9.798	8.478	-541903	16009084	N.D.	17.014 #
42) L9 AR-1268-2	9.857f	8.542	19796084	32770589	7.947	36.891 #

Data Path : Z:\pestpcbsrv\HPCHEM1\ECD_Q\Data\PQ112420\
 Data File : PQ051204.D
 Signal(s) : Signal #1: ECD1A.ch Signal #2: ECD2B.ch
 Acq On : 24 Nov 2020 13:06
 Operator : DD\AJ
 Sample : L4855-07
 Misc :
 ALS Vial : 20 Sample Multiplier: 1

Instrument :
 ECD_Q
 ClientSampleId :
 CB7Z3

Integration File signal 1: autoint1.e
 Integration File signal 2: autoint2.e
 Quant Time: Nov 25 01:14:29 2020
 Quant Method : Z:\pestpcbsrv\HPCHEM1\ECD_Q\Method\PQ111820CLP.M
 Quant Title : GC EXTRACTABLES
 QLast Update : Thu Nov 19 05:59:02 2020
 Response via : Initial Calibration
 Integrator: ChemStation

Volume Inj. : 1 µl
 Signal #1 Phase : ZB MR1 Signal #2 Phase: ZB MR2
 Signal #1 Info : 30Mx0.32mmx 0.5µm Signal #2 Info : 30M x 0.32mm x 0.25µm

	Compound	RT#1	RT#2	Resp#1	Resp#2	ng/ml	ng/ml
43)	L9 AR-1268-3	0.000	8.758	0	5497975	N.D.	7.338 #
44)	L9 AR-1268-4	10.619	9.046	16631333	13464859	17.794	42.922 #
45)	L9 AR-1268-5	11.065	9.346	22245372	7064160	2.958	2.903

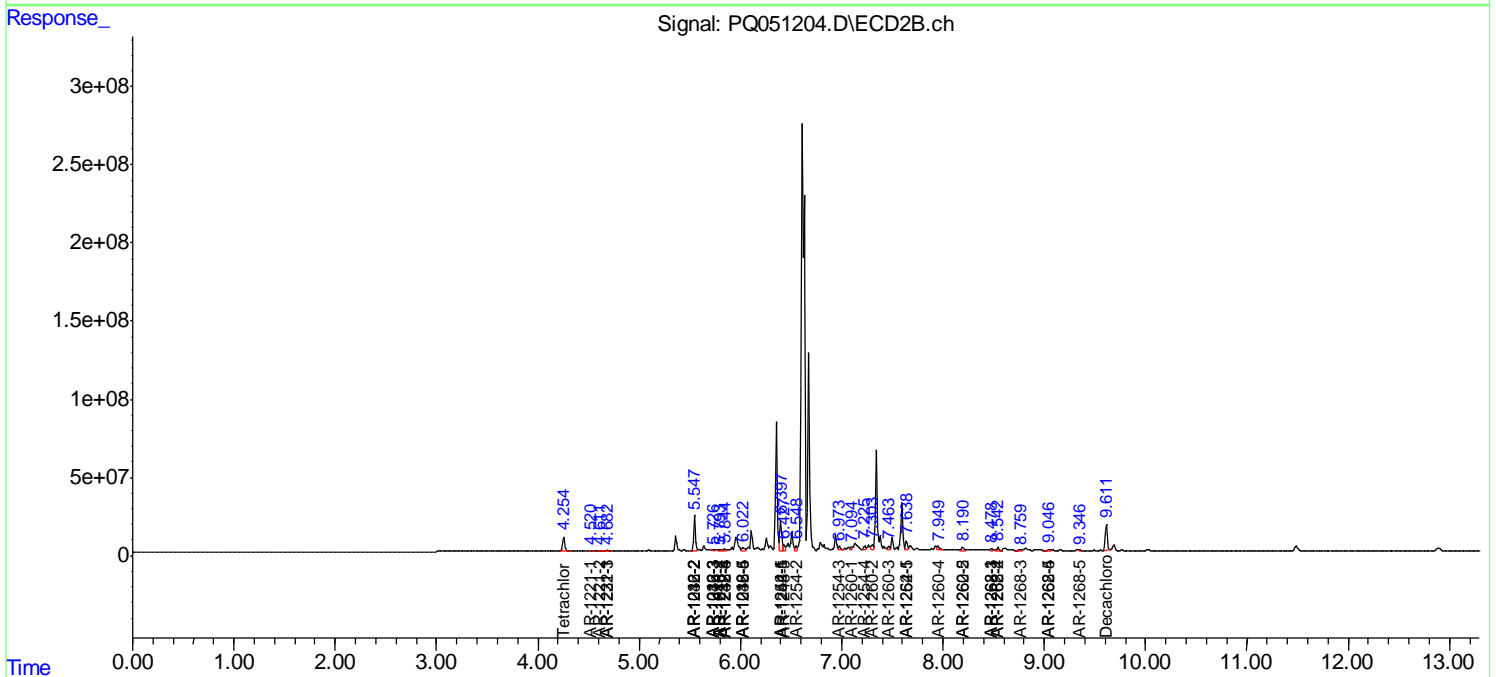
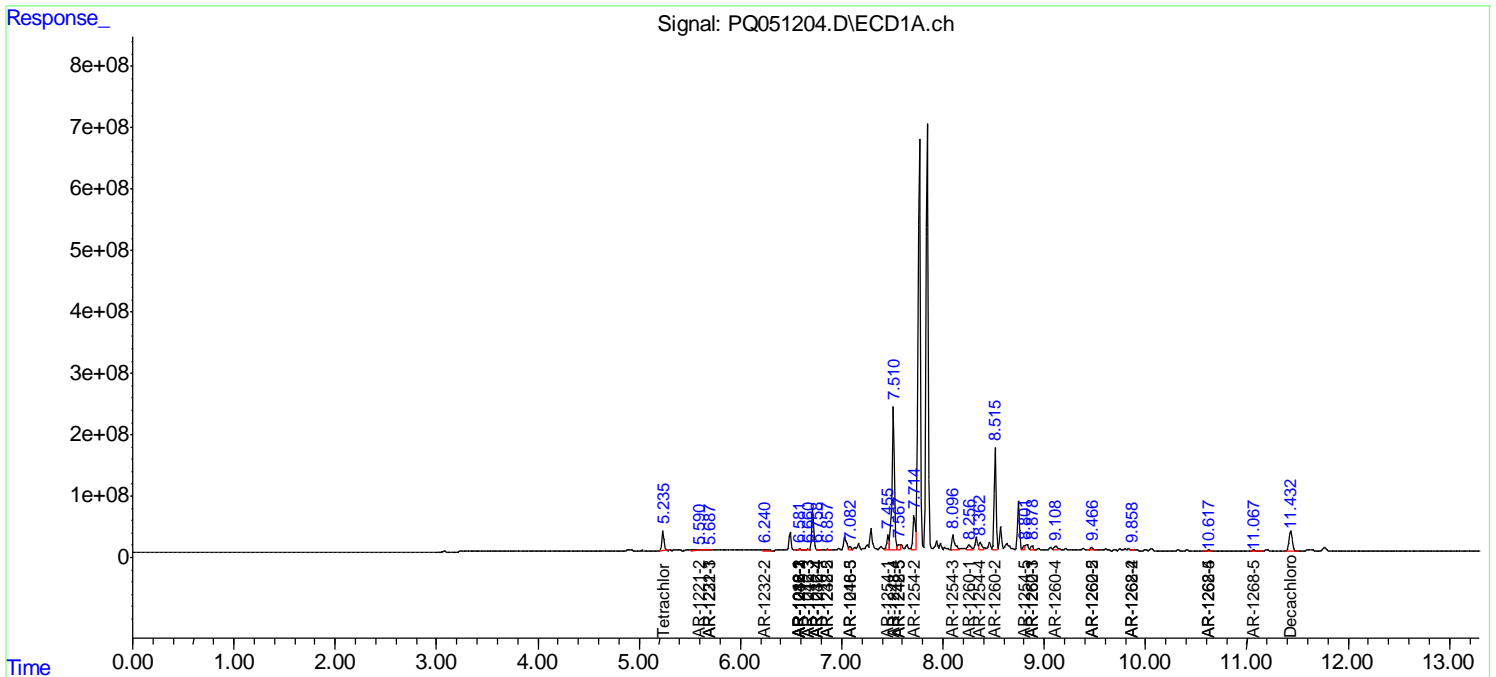
(f)=RT Delta > 1/2 Window (#)=Amounts differ by > 25% (m)=manual int.

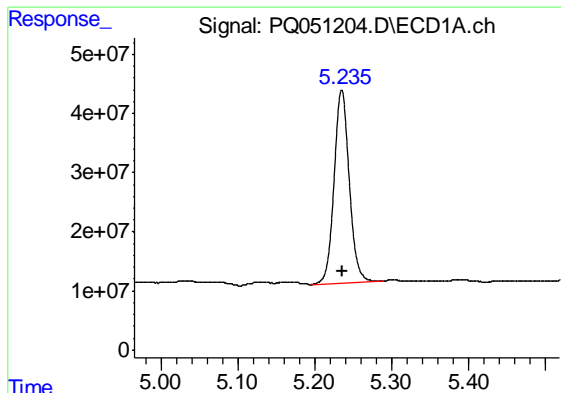
Data Path : Z:\pestpcbsrv\HPCHEM1\ECD_Q\Data\PQ112420\
 Data File : PQ051204.D
 Signal(s) : Signal #1: ECD1A.ch Signal #2: ECD2B.ch
 Acq On : 24 Nov 2020 13:06
 Operator : DD\AJ
 Sample : L4855-07
 Misc :
 ALS Vial : 20 Sample Multiplier: 1

Instrument :
 ECD_Q
 ClientSampled :
 CB7Z3

Integration File signal 1: autoint1.e
 Integration File signal 2: autoint2.e
 Quant Time: Nov 25 01:14:29 2020
 Quant Method : Z:\pestpcbsrv\HPCHEM1\ECD_Q\Method\PQ111820CLP.M
 Quant Title : GC EXTRACTABLES
 QLast Update : Thu Nov 19 05:59:02 2020
 Response via : Initial Calibration
 Integrator: ChemStation

Volume Inj. : 1 µl
 Signal #1 Phase : ZB MR1 Signal #2 Phase: ZB MR2
 Signal #1 Info : 30Mx0.32mmx 0.5µm Signal #2 Info : 30M x 0.32mm x 0.25µm

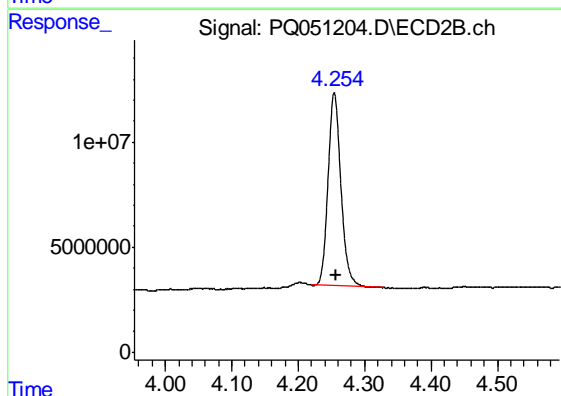




#1 Tetrachloro-m-xylene

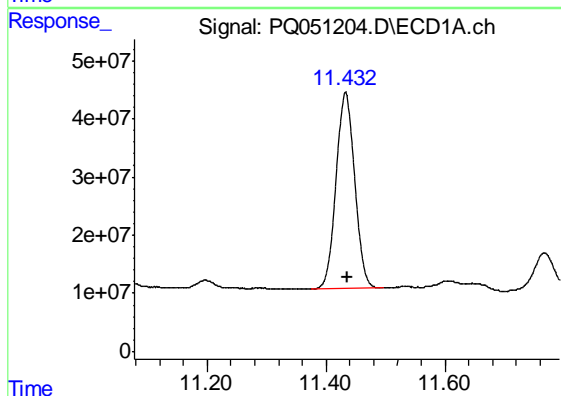
R.T.: 5.235 min
 Delta R.T.: 0.000 min
 Response: 447450224
 Conc: 19.76 ng/ml

Instrument :
 ECD_Q
 ClientSampleId :
 CB7Z3



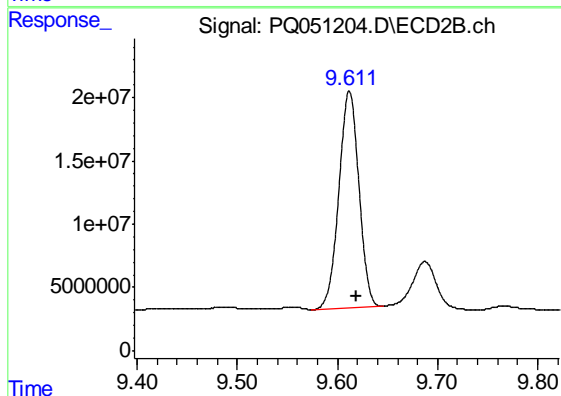
#1 Tetrachloro-m-xylene

R.T.: 4.254 min
 Delta R.T.: -0.002 min
 Response: 124149708
 Conc: 20.82 ng/ml



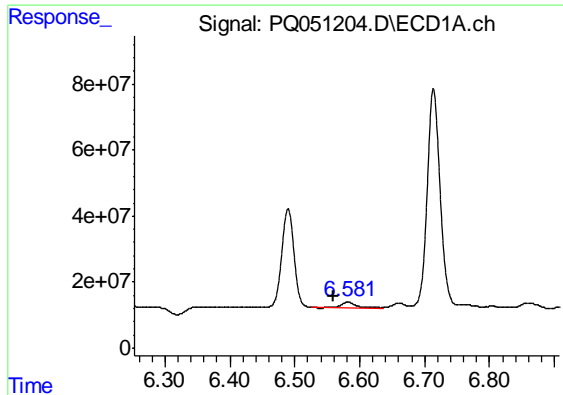
#2 Decachlorobiphenyl

R.T.: 11.433 min
 Delta R.T.: -0.002 min
 Response: 731033591
 Conc: 44.55 ng/ml



#2 Decachlorobiphenyl

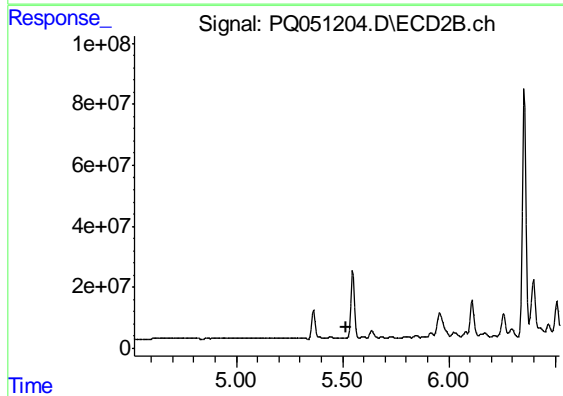
R.T.: 9.612 min
 Delta R.T.: -0.007 min
 Response: 237682310
 Conc: 46.54 ng/ml



#3 AR-1016-1

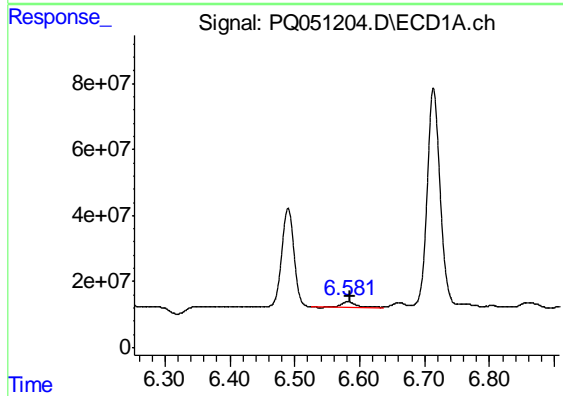
R.T.: 6.582 min
 Delta R.T.: 0.022 min
 Response: 23397683
 Conc: 31.12 ng/ml

Instrument :
 ECD_Q
 ClientSampled :
 CB7Z3



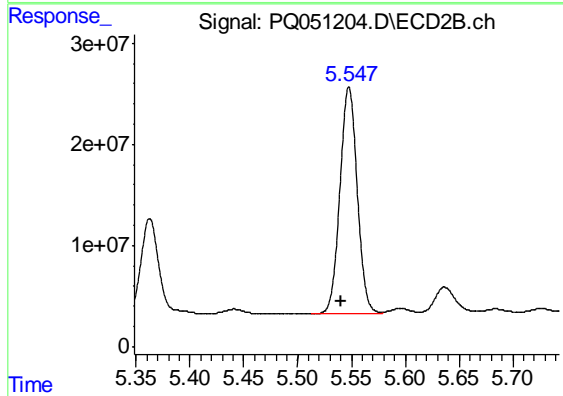
#3 AR-1016-1

R.T.: 5.511 min
 Delta R.T.: -0.009 min
 Response: -64527
 Conc: N.D.



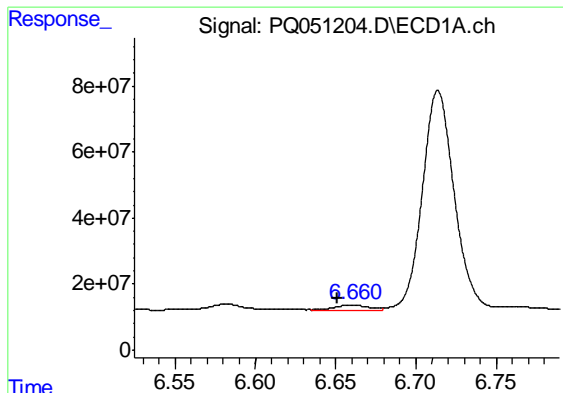
#4 AR-1016-2

R.T.: 6.582 min
 Delta R.T.: -0.002 min
 Response: 23397683
 Conc: 21.52 ng/ml



#4 AR-1016-2

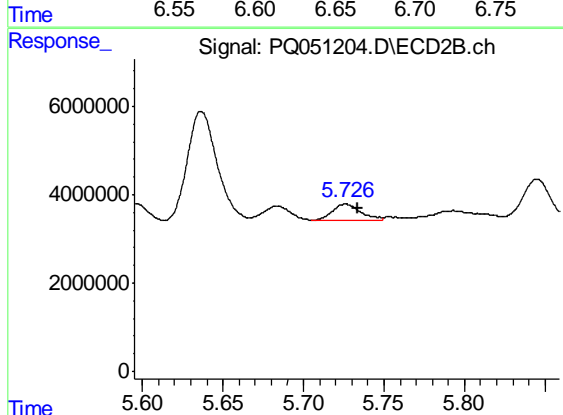
R.T.: 5.548 min
 Delta R.T.: 0.007 min
 Response: 249978996
 Conc: 838.76 ng/ml



#5 AR-1016-3

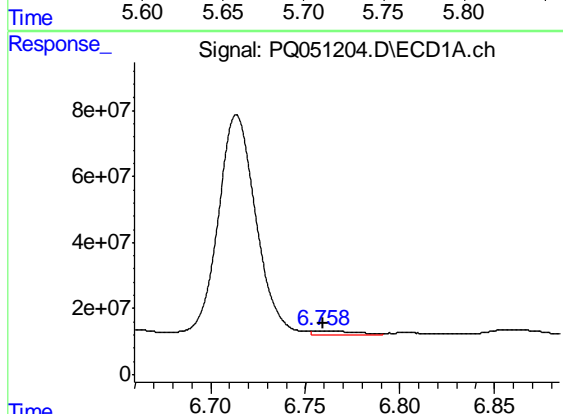
R.T.: 6.660 min
 Delta R.T.: 0.009 min
 Response: 20844359
 Conc: 32.41 ng/ml

Instrument :
 ECD_Q
 ClientSampleId :
 CB7Z3



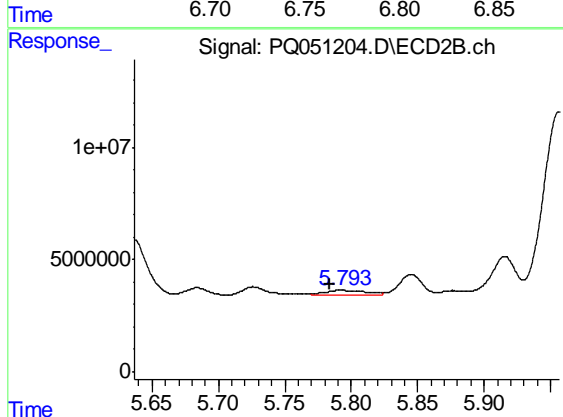
#5 AR-1016-3

R.T.: 5.726 min
 Delta R.T.: -0.008 min
 Response: 4541941
 Conc: 29.69 ng/ml



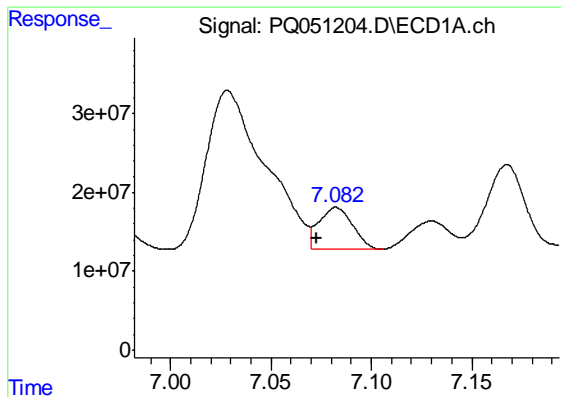
#6 AR-1016-4

R.T.: 6.760 min
 Delta R.T.: 0.000 min
 Response: 16934500
 Conc: 31.27 ng/ml



#6 AR-1016-4

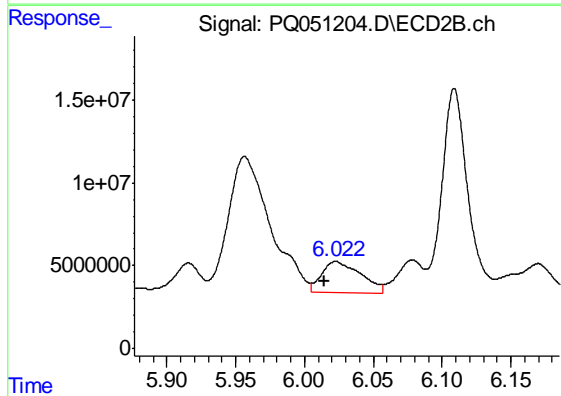
R.T.: 5.793 min
 Delta R.T.: 0.009 min
 Response: 5148807
 Conc: 42.44 ng/ml



#7 AR-1016-5

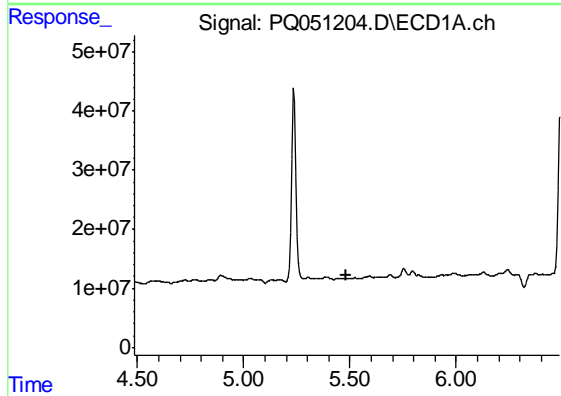
R.T.: 7.082 min
 Delta R.T.: 0.010 min
 Response: 62681617
 Conc: 120.41 ng/ml

Instrument :
 ECD_Q
 ClientSampled :
 CB7Z3



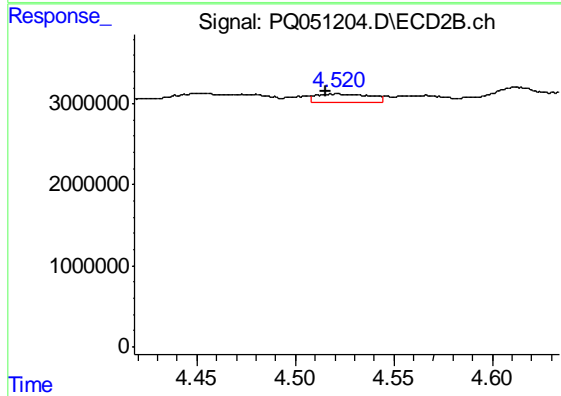
#7 AR-1016-5

R.T.: 6.023 min
 Delta R.T.: 0.008 min
 Response: 37078844
 Conc: 237.06 ng/ml



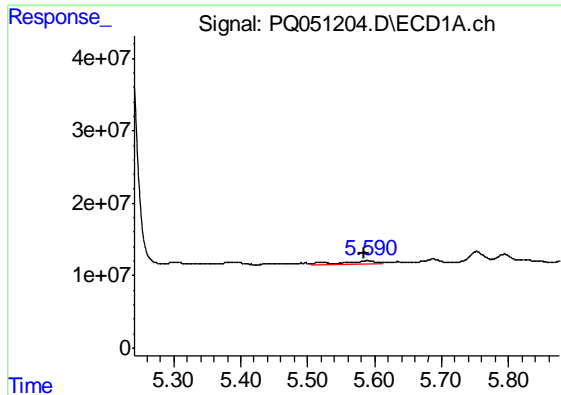
#8 AR-1221-1

R.T.: 0.000 min
 Exp R.T. : 5.486 min
 Response: 0
 Conc: N.D.



#8 AR-1221-1

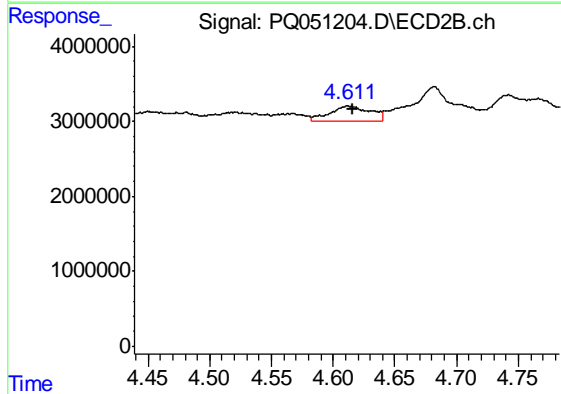
R.T.: 4.521 min
 Delta R.T.: 0.006 min
 Response: 1955289
 Conc: 31.78 ng/ml



#9 AR-1221-2

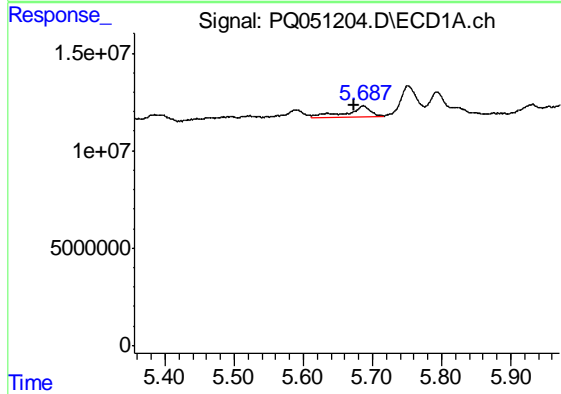
R.T.: 5.589 min
 Delta R.T.: 0.005 min
 Response: 13696383
 Conc: 89.22 ng/ml

Instrument :
 ECD_Q
 ClientSampled :
 CB7Z3



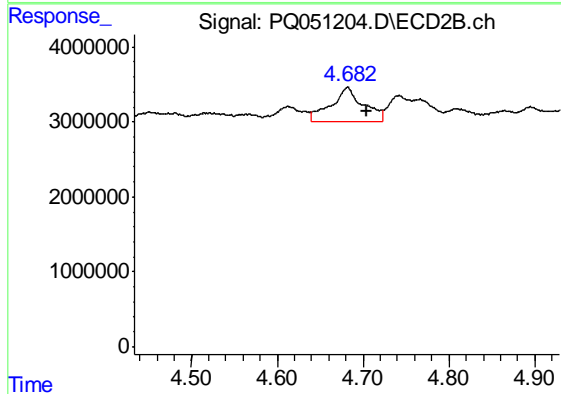
#9 AR-1221-2

R.T.: 4.612 min
 Delta R.T.: -0.004 min
 Response: 4457619
 Conc: 104.21 ng/ml



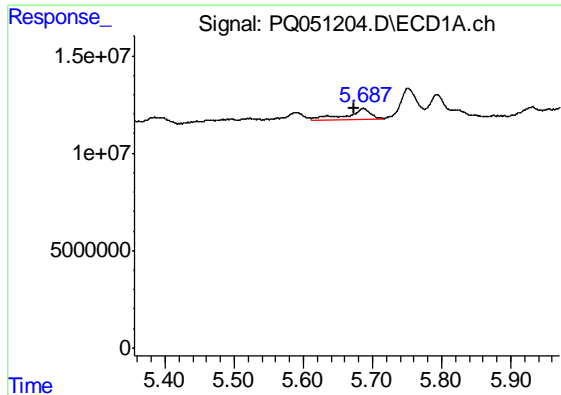
#10 AR-1221-3

R.T.: 5.687 min
 Delta R.T.: 0.014 min
 Response: 15056406
 Conc: 28.81 ng/ml



#10 AR-1221-3

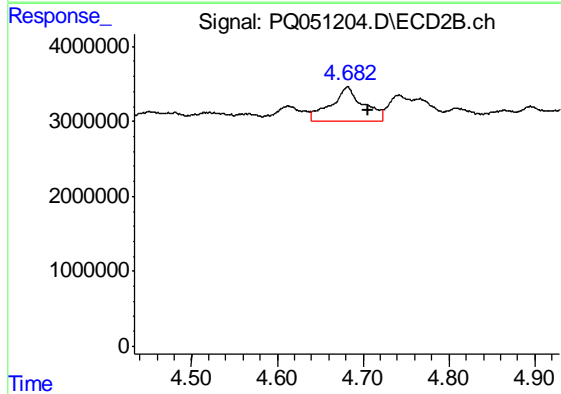
R.T.: 4.682 min
 Delta R.T.: -0.023 min
 Response: 11976614
 Conc: 81.66 ng/ml



#11 AR-1232-1

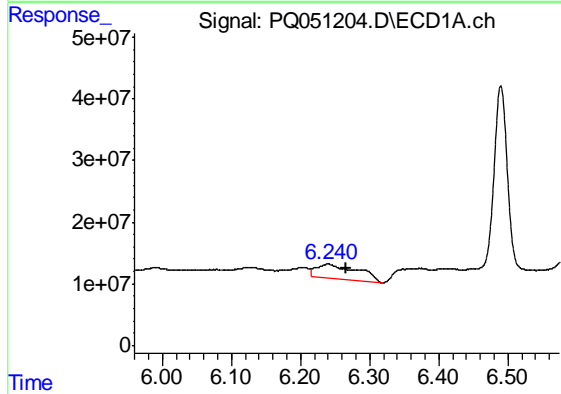
R.T.: 5.687 min
 Delta R.T.: 0.013 min
 Response: 15056406
 Conc: 35.32 ng/ml

Instrument :
 ECD_Q
 ClientSampled :
 CB7Z3



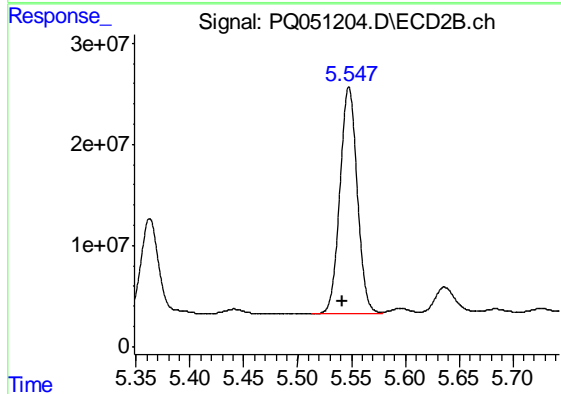
#11 AR-1232-1

R.T.: 4.682 min
 Delta R.T.: -0.023 min
 Response: 11976614
 Conc: 100.59 ng/ml



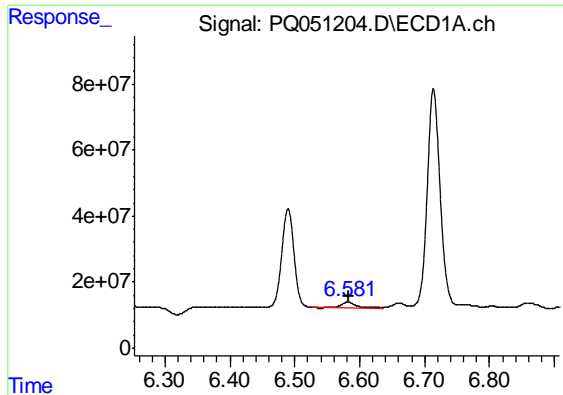
#12 AR-1232-2

R.T.: 6.240 min
 Delta R.T.: -0.026 min
 Response: 98716791
 Conc: 439.23 ng/ml



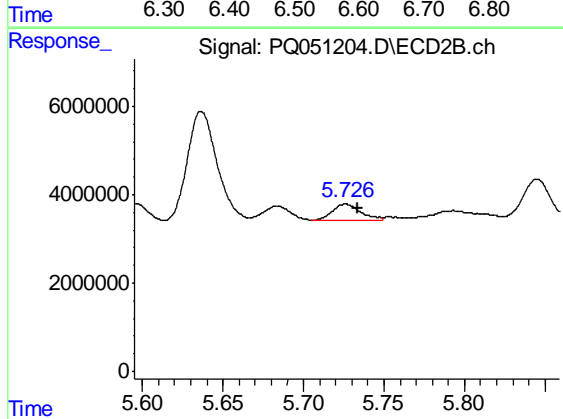
#12 AR-1232-2

R.T.: 5.548 min
 Delta R.T.: 0.006 min
 Response: 249978996
 Conc: 2006.84 ng/ml

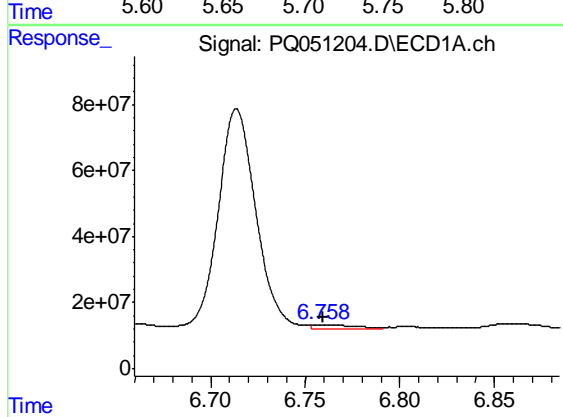


#13 AR-1232-3
 R.T.: 6.582 min
 Delta R.T.: -0.002 min
 Response: 23397683
 Conc: 50.38 ng/ml

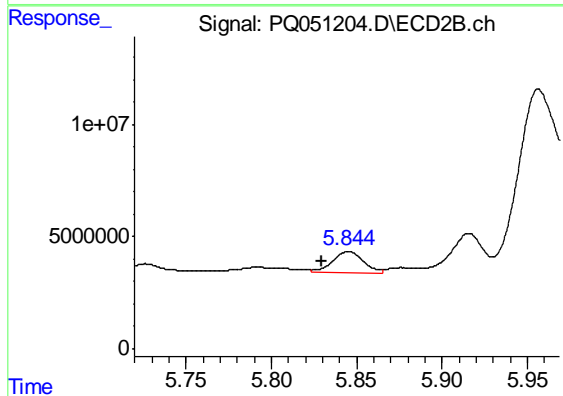
Instrument :
 ECD_Q
 ClientSampleId :
 CB7Z3



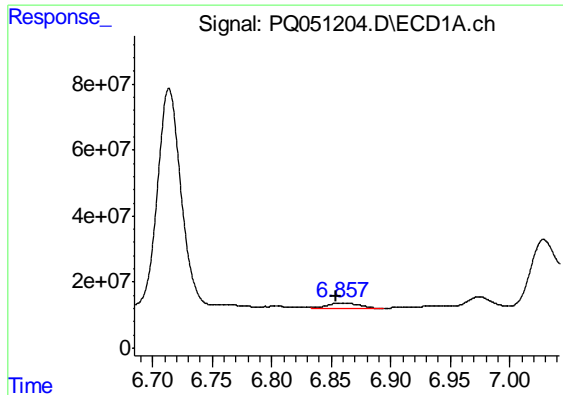
#13 AR-1232-3
 R.T.: 5.726 min
 Delta R.T.: -0.008 min
 Response: 4541941
 Conc: 71.57 ng/ml



#14 AR-1232-4
 R.T.: 6.760 min
 Delta R.T.: 0.000 min
 Response: 16934500
 Conc: 73.03 ng/ml



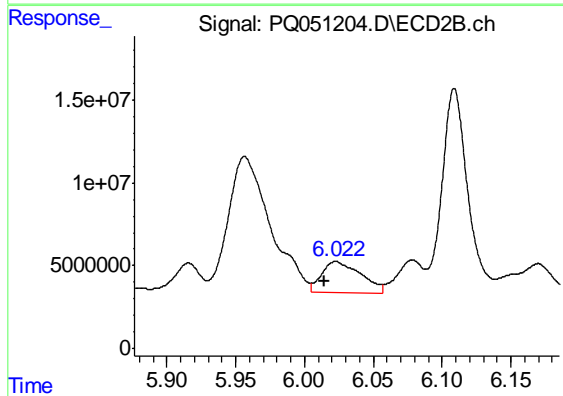
#14 AR-1232-4
 R.T.: 5.845 min
 Delta R.T.: 0.016 min
 Response: 11863900
 Conc: 215.21 ng/ml



#15 AR-1232-5

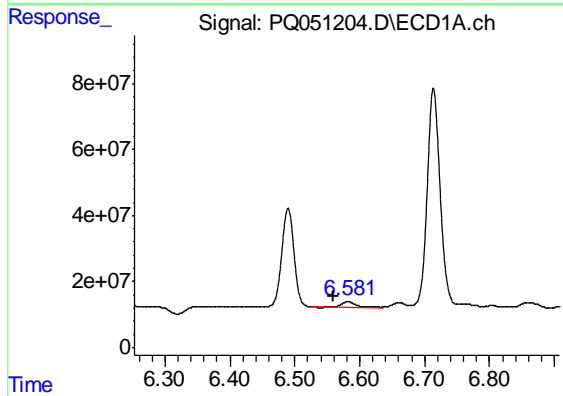
R.T.: 6.859 min
 Delta R.T.: 0.004 min
 Response: 29687232
 Conc: 177.61 ng/ml

Instrument :
 ECD_Q
 ClientSampleId :
 CB7Z3



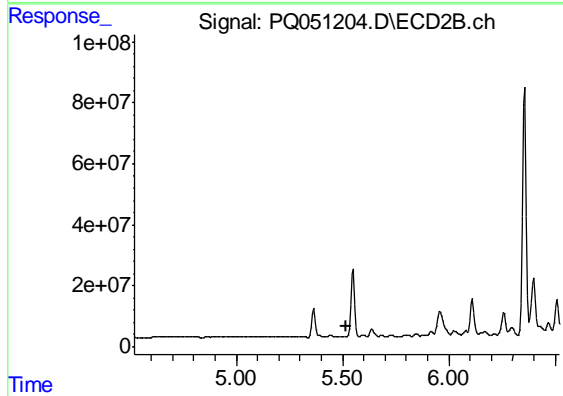
#15 AR-1232-5

R.T.: 6.023 min
 Delta R.T.: 0.008 min
 Response: 37078844
 Conc: 620.10 ng/ml



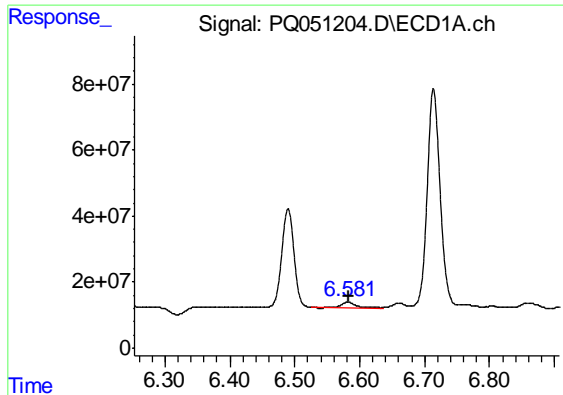
#16 AR-1242-1

R.T.: 6.582 min
 Delta R.T.: 0.022 min
 Response: 23397683
 Conc: 38.70 ng/ml



#16 AR-1242-1

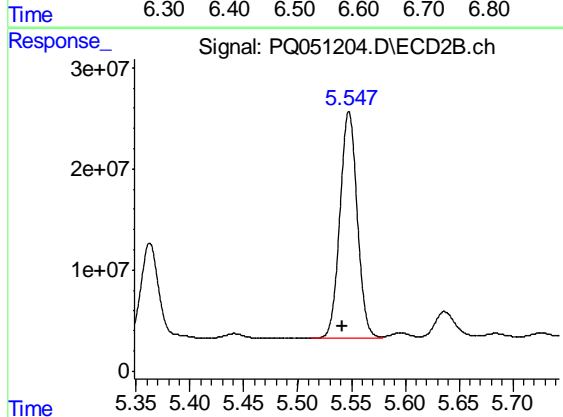
R.T.: 5.511 min
 Delta R.T.: -0.009 min
 Response: -64527
 Conc: N.D.



#17 AR-1242-2

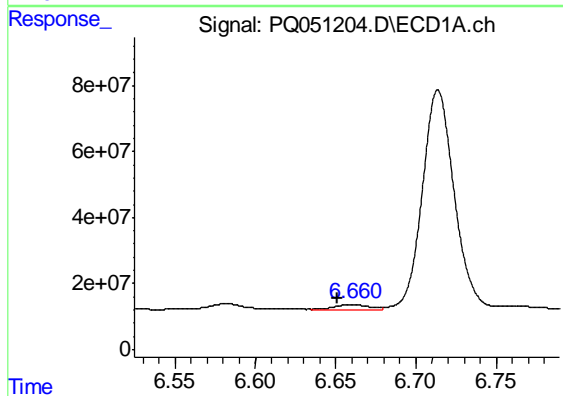
R.T.: 6.582 min
 Delta R.T.: -0.002 min
 Response: 23397683
 Conc: 27.03 ng/ml

Instrument :
 ECD_Q
 ClientSampled :
 CB7Z3



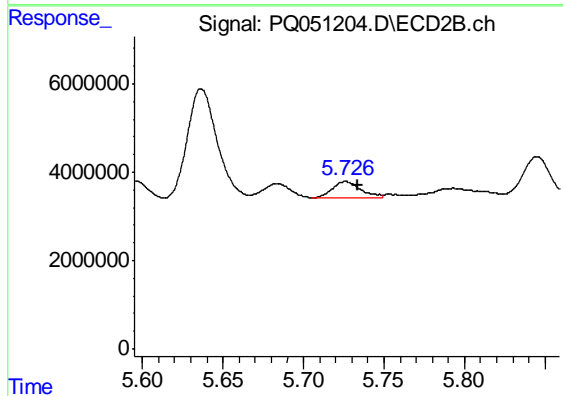
#17 AR-1242-2

R.T.: 5.548 min
 Delta R.T.: 0.006 min
 Response: 249978996
 Conc: 1070.53 ng/ml



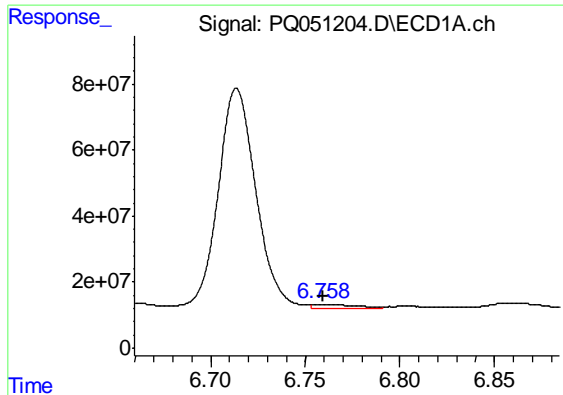
#18 AR-1242-3

R.T.: 6.660 min
 Delta R.T.: 0.009 min
 Response: 20844359
 Conc: 40.36 ng/ml



#18 AR-1242-3

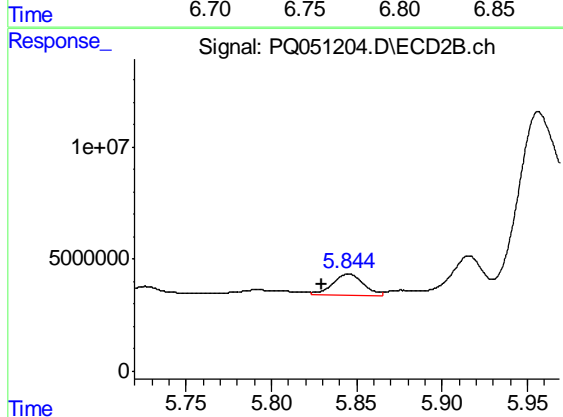
R.T.: 5.726 min
 Delta R.T.: -0.008 min
 Response: 4541941
 Conc: 37.54 ng/ml



#19 AR-1242-4

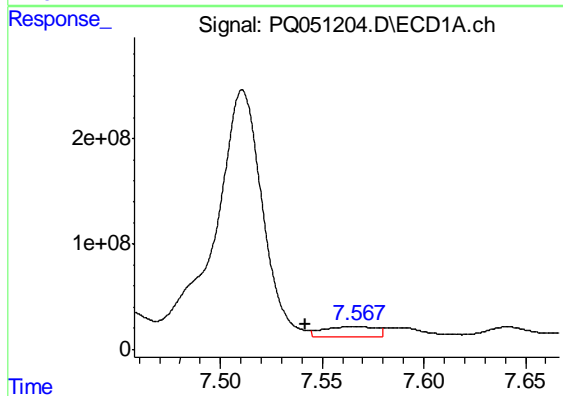
R.T.: 6.760 min
 Delta R.T.: 0.000 min
 Response: 16934500
 Conc: 39.26 ng/ml

Instrument :
 ECD_Q
 ClientSampled :
 CB7Z3



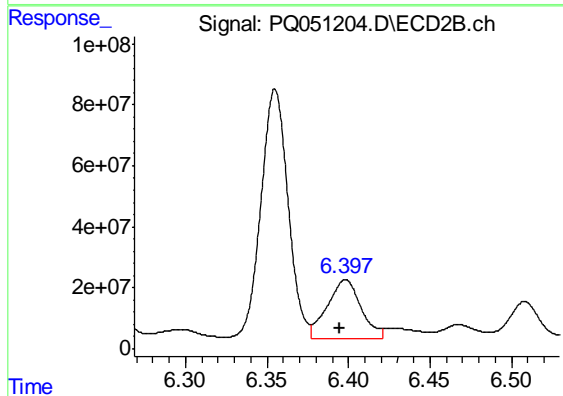
#19 AR-1242-4

R.T.: 5.845 min
 Delta R.T.: 0.015 min
 Response: 11863900
 Conc: 101.69 ng/ml



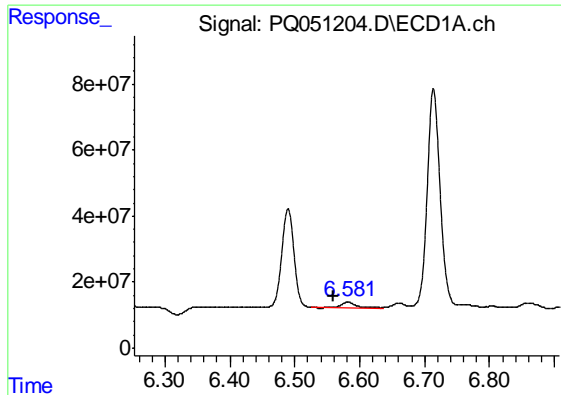
#20 AR-1242-5

R.T.: 7.567 min
 Delta R.T.: 0.025 min
 Response: 164013625
 Conc: 349.69 ng/ml



#20 AR-1242-5

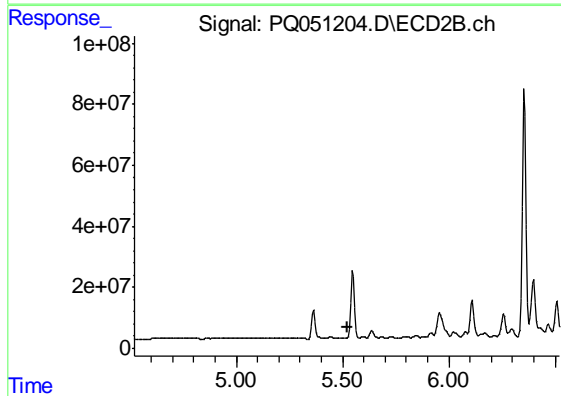
R.T.: 6.398 min
 Delta R.T.: 0.004 min
 Response: 279119331
 Conc: 1764.17 ng/ml



#21 AR-1248-1

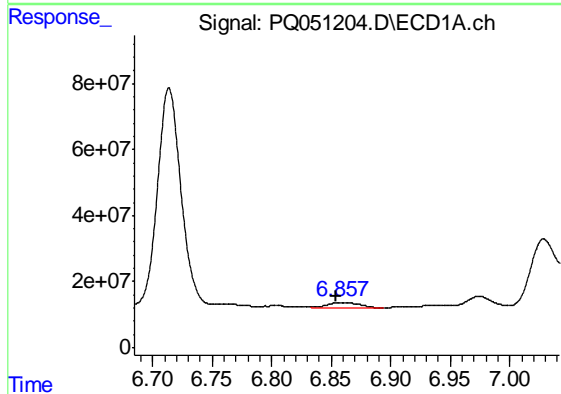
R.T.: 6.582 min
 Delta R.T.: 0.022 min
 Response: 23397683
 Conc: 54.26 ng/ml

Instrument :
 ECD_Q
 ClientSampled :
 CB7Z3



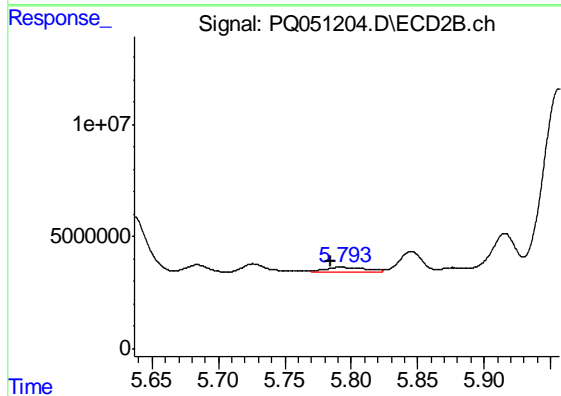
#21 AR-1248-1

R.T.: 5.511 min
 Delta R.T.: -0.010 min
 Response: -64527
 Conc: N.D.



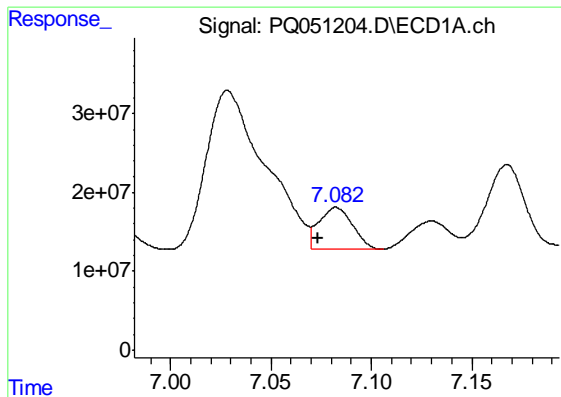
#22 AR-1248-2

R.T.: 6.859 min
 Delta R.T.: 0.005 min
 Response: 29687232
 Conc: 49.30 ng/ml



#22 AR-1248-2

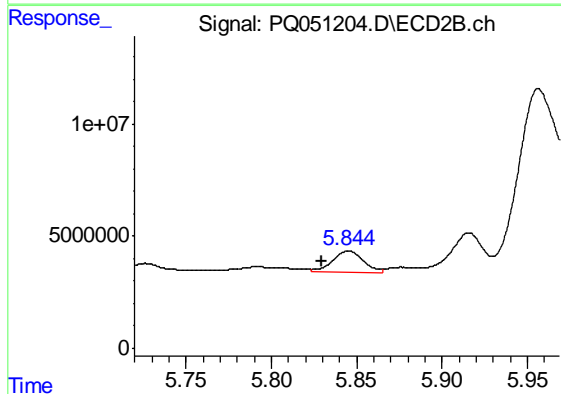
R.T.: 5.793 min
 Delta R.T.: 0.009 min
 Response: 5148807
 Conc: 31.26 ng/ml



#23 AR-1248-3

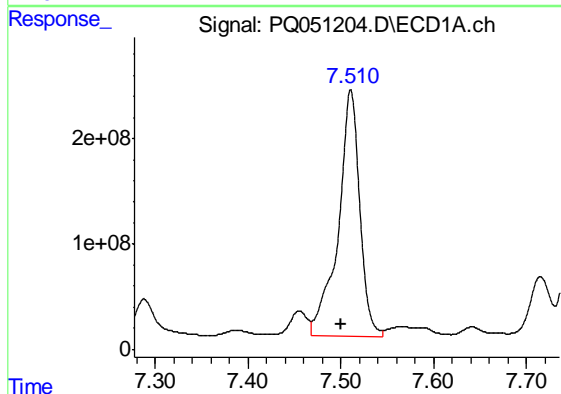
R.T.: 7.082 min
 Delta R.T.: 0.009 min
 Response: 62681617
 Conc: 90.27 ng/ml

Instrument :
 ECD_Q
 ClientSampleId :
 CB7Z3



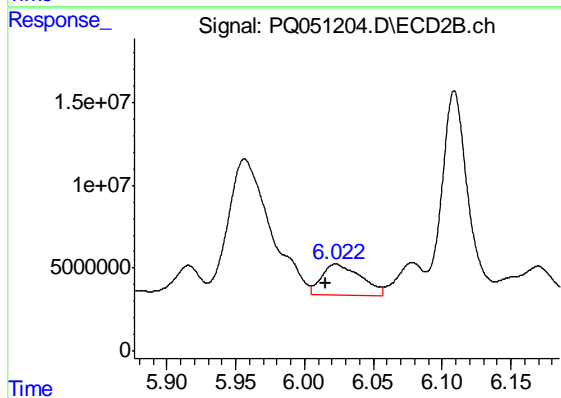
#23 AR-1248-3

R.T.: 5.845 min
 Delta R.T.: 0.016 min
 Response: 11863900
 Conc: 69.51 ng/ml



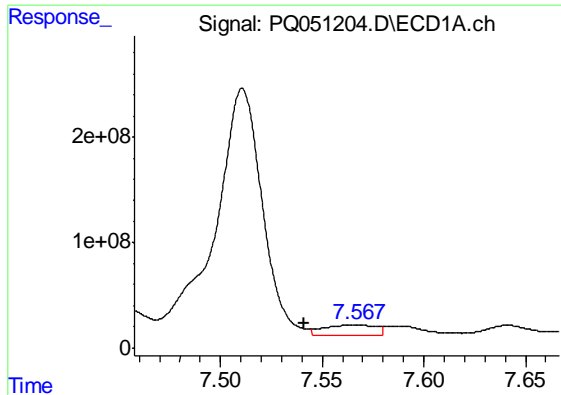
#24 AR-1248-4

R.T.: 7.511 min
 Delta R.T.: 0.010 min
 Response: 3770586646
 Conc: 4655.08 ng/ml



#24 AR-1248-4

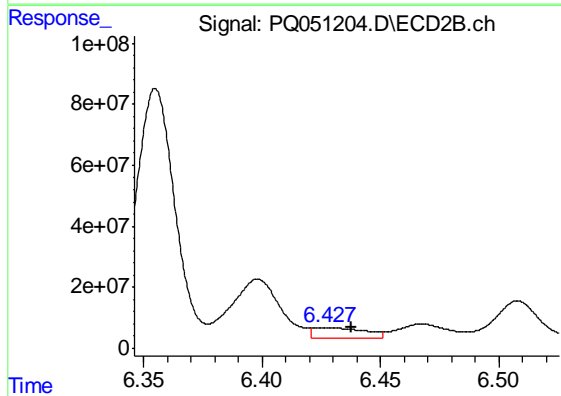
R.T.: 6.023 min
 Delta R.T.: 0.008 min
 Response: 37078844
 Conc: 179.70 ng/ml



#25 AR-1248-5

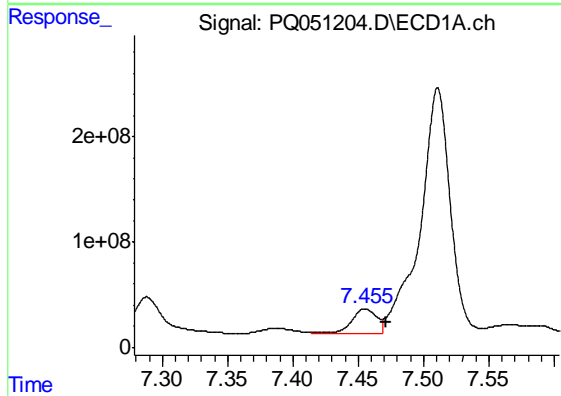
R.T.: 7.567 min
 Delta R.T.: 0.026 min
 Response: 164013625
 Conc: 208.80 ng/ml

Instrument :
 ECD_Q
 ClientSampleId :
 CB7Z3



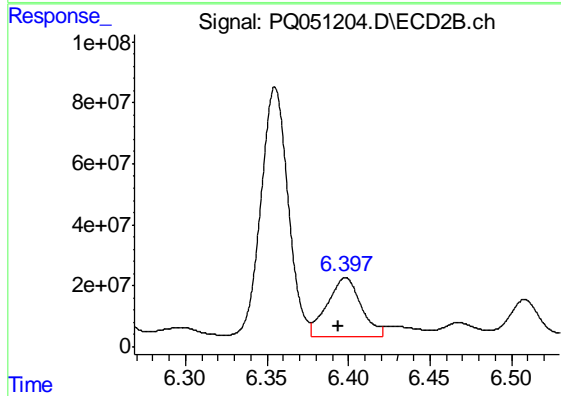
#25 AR-1248-5

R.T.: 6.427 min
 Delta R.T.: -0.011 min
 Response: 52881074
 Conc: 246.55 ng/ml



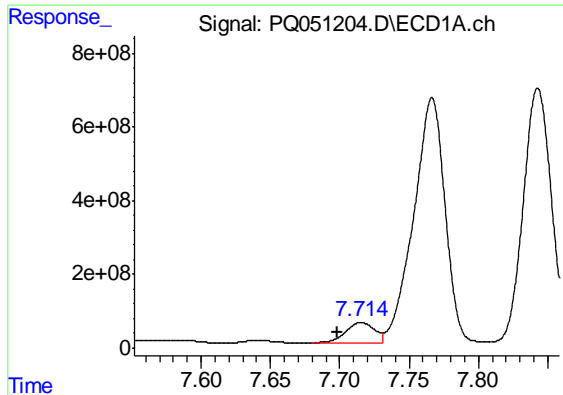
#26 AR-1254-1

R.T.: 7.455 min
 Delta R.T.: -0.016 min
 Response: 336945166
 Conc: 392.90 ng/ml



#26 AR-1254-1

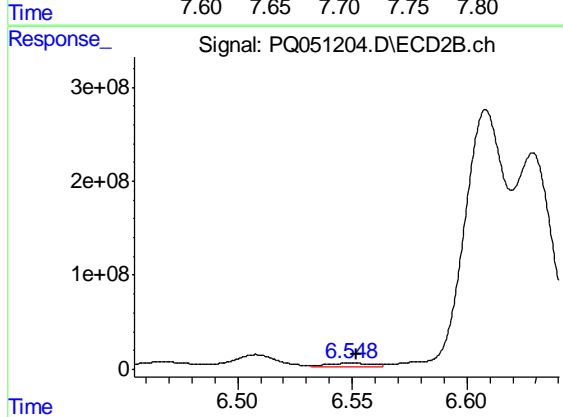
R.T.: 6.398 min
 Delta R.T.: 0.004 min
 Response: 279119331
 Conc: 779.31 ng/ml



#27 AR-1254-2

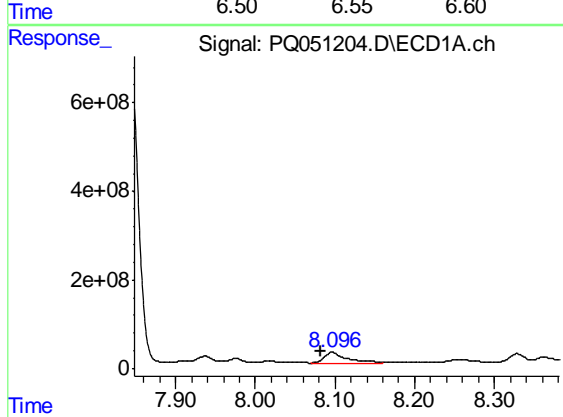
R.T.: 7.715 min
 Delta R.T.: 0.017 min
 Response: 851253606
 Conc: 638.70 ng/ml

Instrument :
 ECD_Q
 ClientSampleId :
 CB7Z3



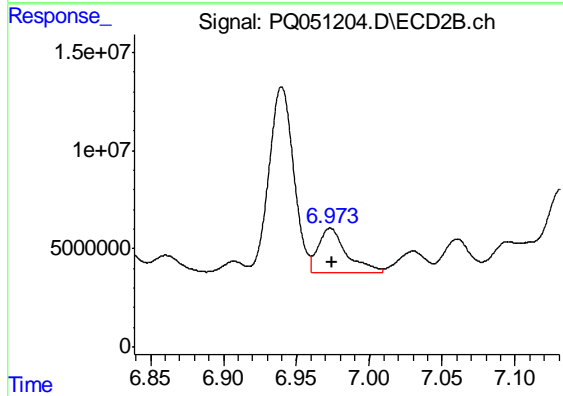
#27 AR-1254-2

R.T.: 6.549 min
 Delta R.T.: -0.003 min
 Response: 40522437
 Conc: 130.79 ng/ml



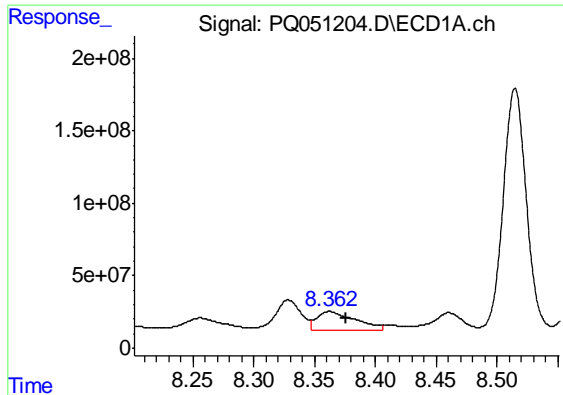
#28 AR-1254-3

R.T.: 8.096 min
 Delta R.T.: 0.014 min
 Response: 483835741
 Conc: 334.10 ng/ml



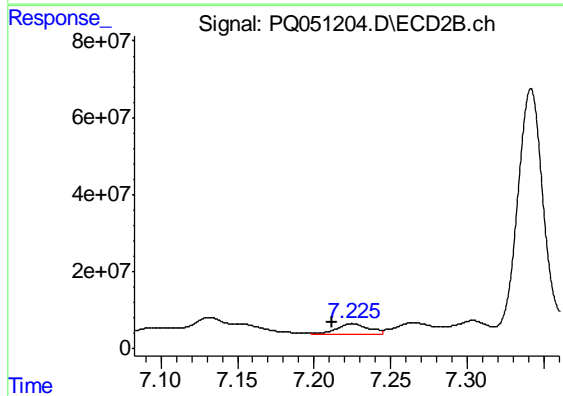
#28 AR-1254-3

R.T.: 6.973 min
 Delta R.T.: -0.001 min
 Response: 30672799
 Conc: 59.36 ng/ml

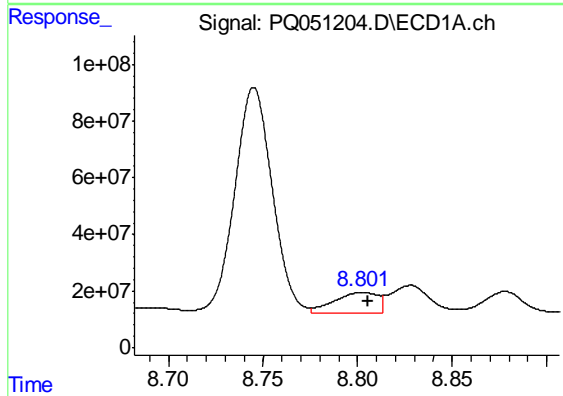


#29 AR-1254-4
 R.T.: 8.362 min
 Delta R.T.: -0.014 min
 Response: 280392846
 Conc: 267.70 ng/ml

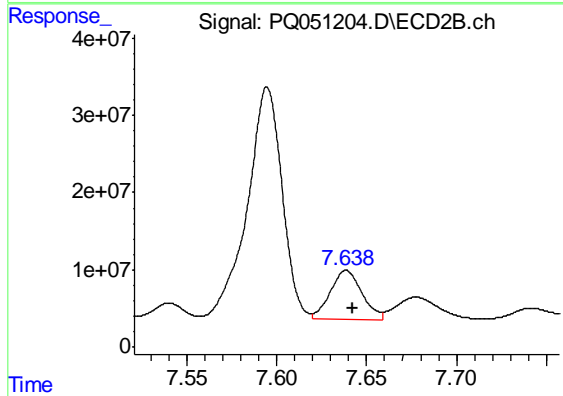
Instrument :
 ECD_Q
 ClientSampleId :
 CB7Z3



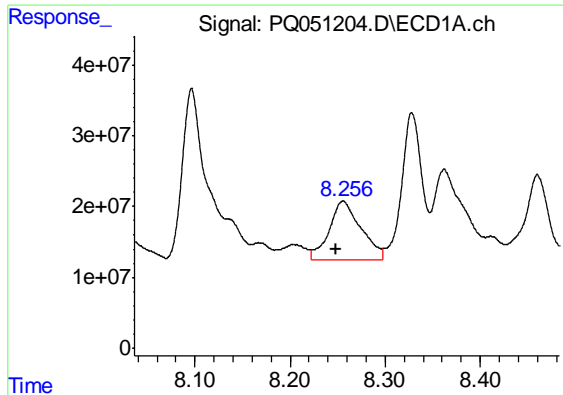
#29 AR-1254-4
 R.T.: 7.225 min
 Delta R.T.: 0.013 min
 Response: 39281504
 Conc: 120.67 ng/ml



#30 AR-1254-5
 R.T.: 8.802 min
 Delta R.T.: -0.003 min
 Response: 114426978
 Conc: 103.73 ng/ml

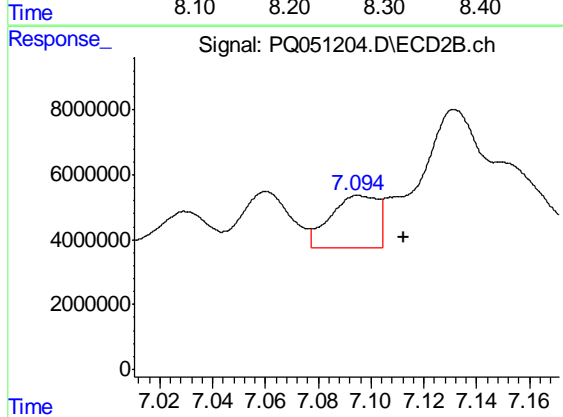


#30 AR-1254-5
 R.T.: 7.639 min
 Delta R.T.: -0.004 min
 Response: 78130382
 Conc: 172.18 ng/ml

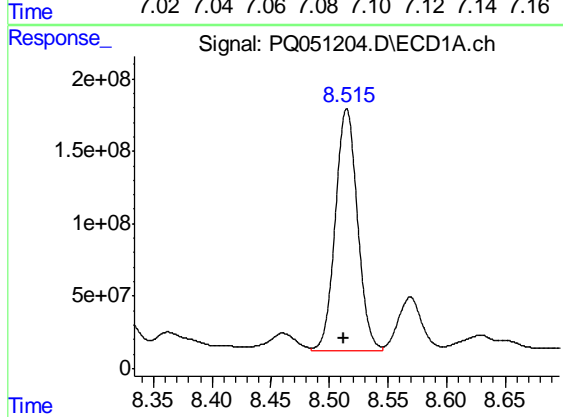


#31 AR-1260-1
 R.T.: 8.256 min
 Delta R.T.: 0.007 min
 Response: 194114508
 Conc: 222.77 ng/ml

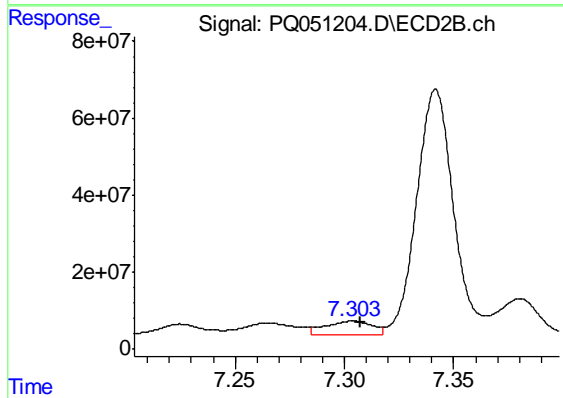
Instrument :
 ECD_Q
 ClientSampleId :
 CB7Z3



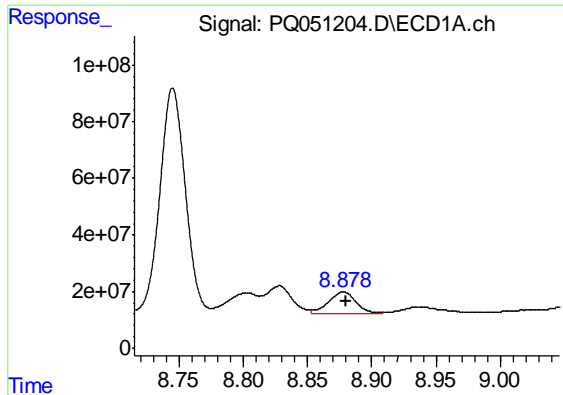
#31 AR-1260-1
 R.T.: 7.095 min
 Delta R.T.: -0.017 min
 Response: 20252908
 Conc: 65.81 ng/ml



#32 AR-1260-2
 R.T.: 8.515 min
 Delta R.T.: 0.003 min
 Response: 2197499330
 Conc: 2145.44 ng/ml



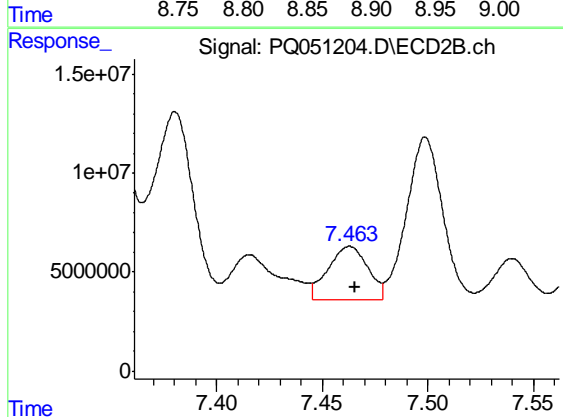
#32 AR-1260-2
 R.T.: 7.304 min
 Delta R.T.: -0.004 min
 Response: 52198940
 Conc: 134.53 ng/ml



#33 AR-1260-3

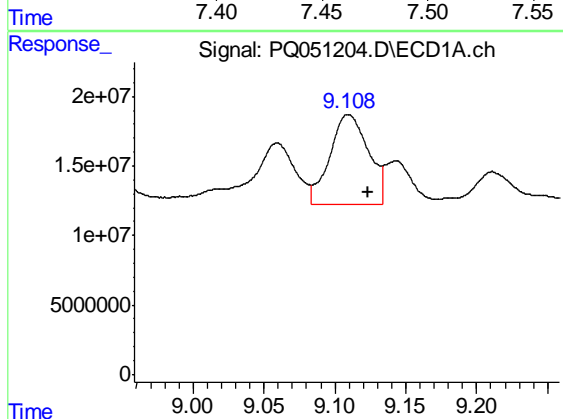
R.T.: 8.878 min
 Delta R.T.: -0.002 min
 Response: 108914365
 Conc: 147.26 ng/ml

Instrument :
 ECD_Q
 ClientSampleId :
 CB7Z3



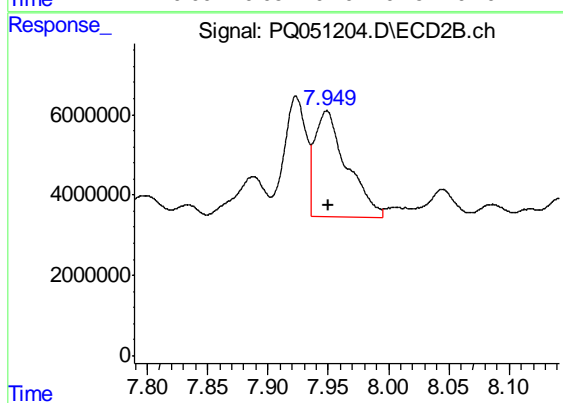
#33 AR-1260-3

R.T.: 7.463 min
 Delta R.T.: -0.003 min
 Response: 35384985
 Conc: 97.95 ng/ml



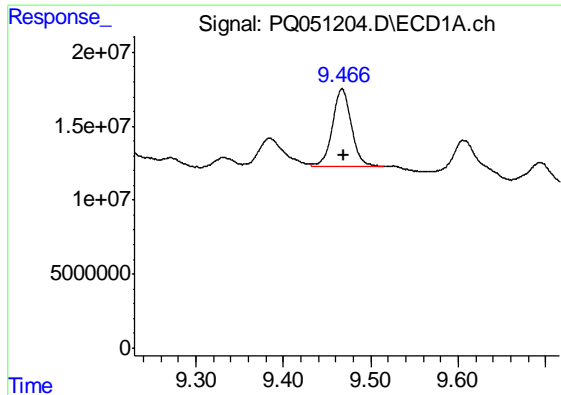
#34 AR-1260-4

R.T.: 9.109 min
 Delta R.T.: -0.014 min
 Response: 122106705
 Conc: 144.64 ng/ml



#34 AR-1260-4

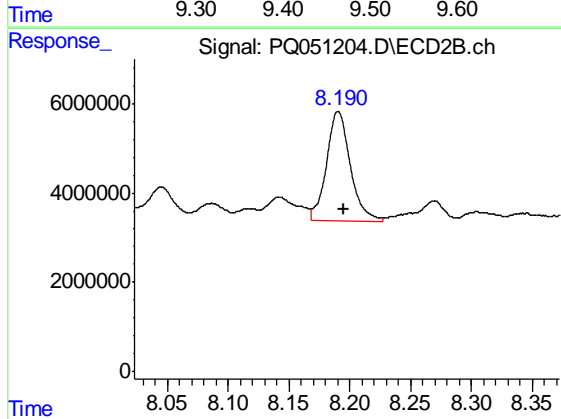
R.T.: 7.949 min
 Delta R.T.: -0.002 min
 Response: 48693843
 Conc: 155.45 ng/ml



#35 AR-1260-5

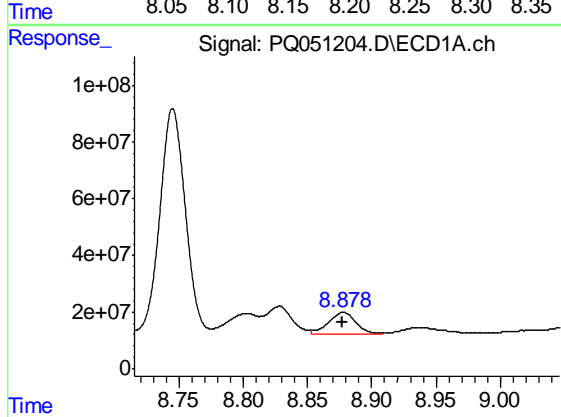
R.T.: 9.467 min
 Delta R.T.: -0.002 min
 Response: 79510646
 Conc: 45.21 ng/ml

Instrument :
 ECD_Q
 ClientSampleId :
 CB7Z3



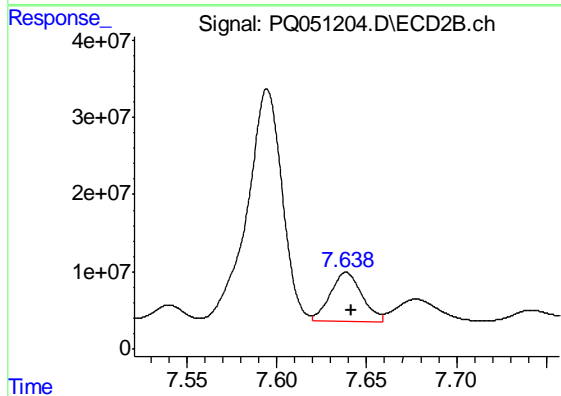
#35 AR-1260-5

R.T.: 8.190 min
 Delta R.T.: -0.005 min
 Response: 33710181
 Conc: 42.91 ng/ml



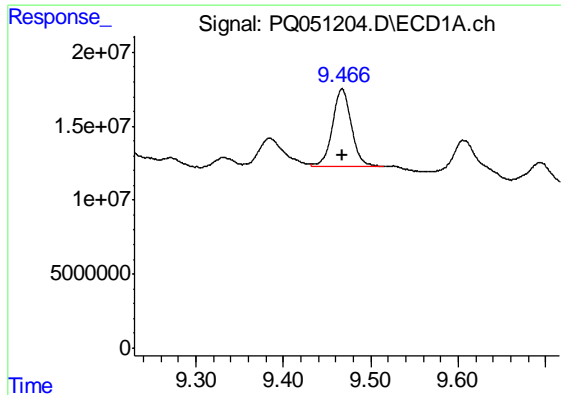
#36 AR-1262-1

R.T.: 8.878 min
 Delta R.T.: 0.000 min
 Response: 108914365
 Conc: 85.65 ng/ml



#36 AR-1262-1

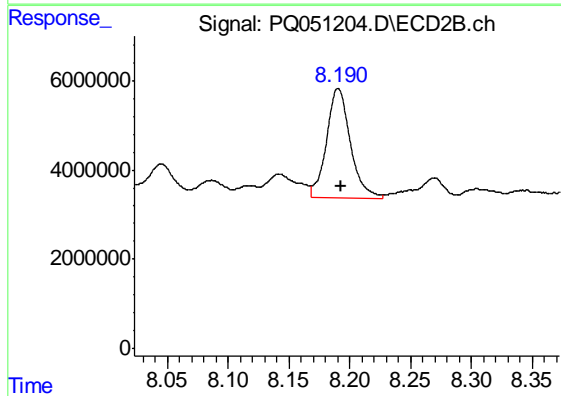
R.T.: 7.639 min
 Delta R.T.: -0.003 min
 Response: 78130382
 Conc: 335.89 ng/ml



#37 AR-1262-2

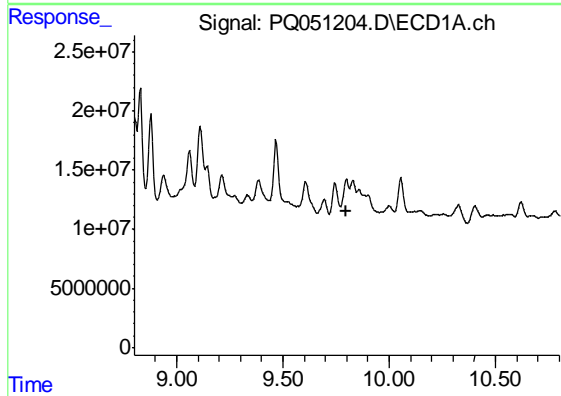
R.T.: 9.467 min
 Delta R.T.: 0.000 min
 Response: 79510646
 Conc: 35.02 ng/ml

Instrument :
 ECD_Q
 ClientSampleId :
 CB7Z3



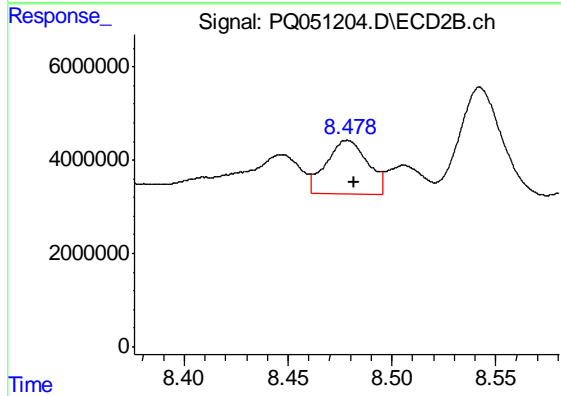
#37 AR-1262-2

R.T.: 8.190 min
 Delta R.T.: -0.003 min
 Response: 33710181
 Conc: 39.18 ng/ml



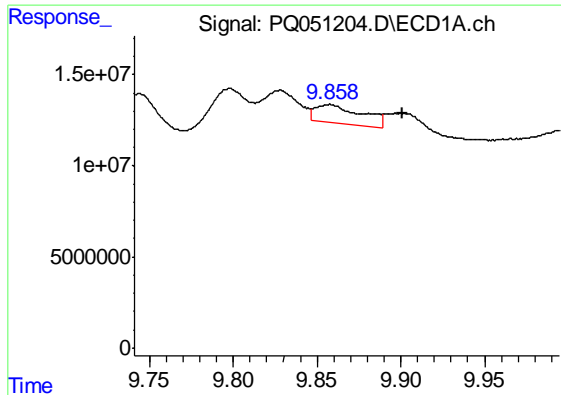
#38 AR-1262-3

R.T.: 9.798 min
 Delta R.T.: -0.003 min
 Response: -541903
 Conc: N.D.



#38 AR-1262-3

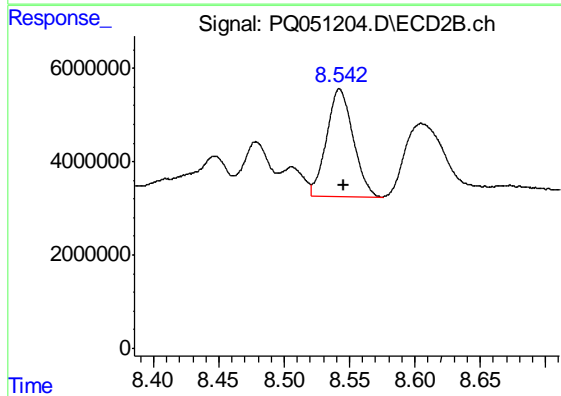
R.T.: 8.478 min
 Delta R.T.: -0.003 min
 Response: 16009084
 Conc: 51.08 ng/ml



#39 AR-1262-4

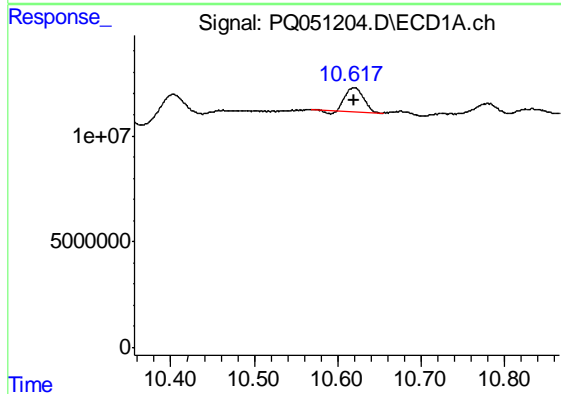
R.T.: 9.857 min
 Delta R.T.: -0.044 min
 Response: 19796084
 Conc: 34.42 ng/ml

Instrument :
 ECD_Q
 ClientSampled :
 CB7Z3



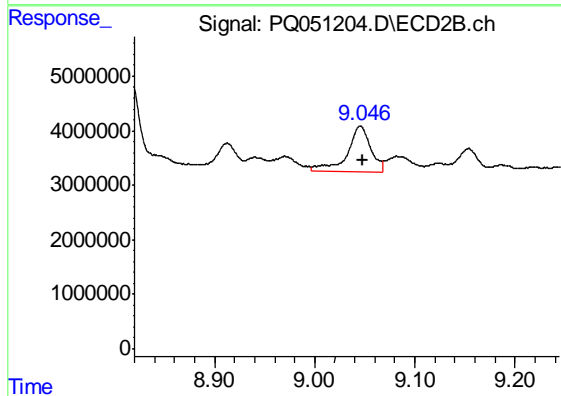
#39 AR-1262-4

R.T.: 8.542 min
 Delta R.T.: -0.003 min
 Response: 32770589
 Conc: 53.39 ng/ml



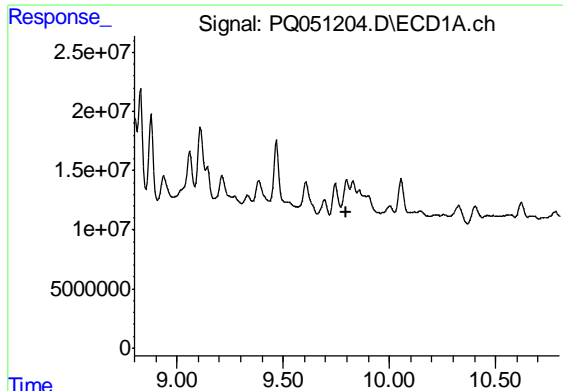
#40 AR-1262-5

R.T.: 10.619 min
 Delta R.T.: 0.000 min
 Response: 16631333
 Conc: 20.66 ng/ml



#40 AR-1262-5

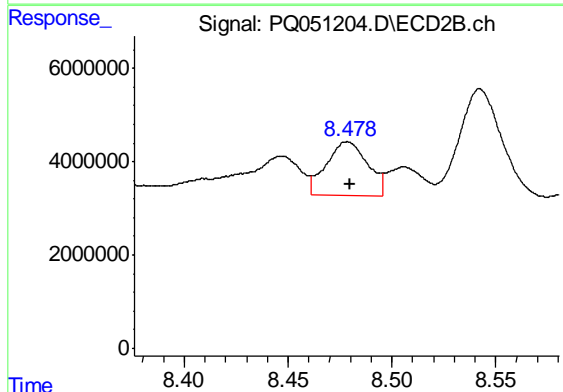
R.T.: 9.046 min
 Delta R.T.: -0.002 min
 Response: 13464859
 Conc: 48.46 ng/ml



#41 AR-1268-1

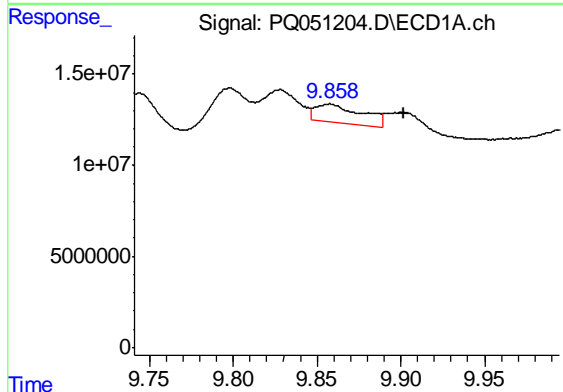
R.T.: 9.798 min
 Delta R.T.: -0.002 min
 Response: -541903
 Conc: N.D.

Instrument :
 ECD_Q
 ClientSampled :
 CB7Z3



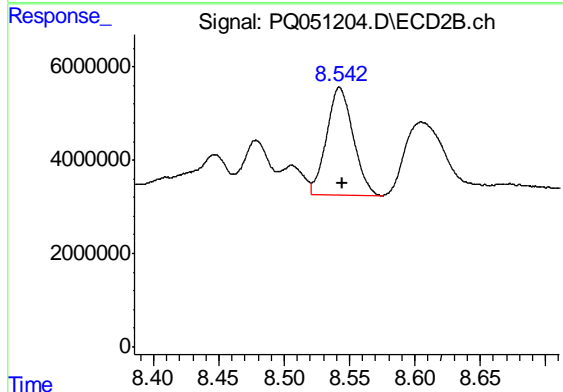
#41 AR-1268-1

R.T.: 8.478 min
 Delta R.T.: -0.001 min
 Response: 16009084
 Conc: 17.01 ng/ml



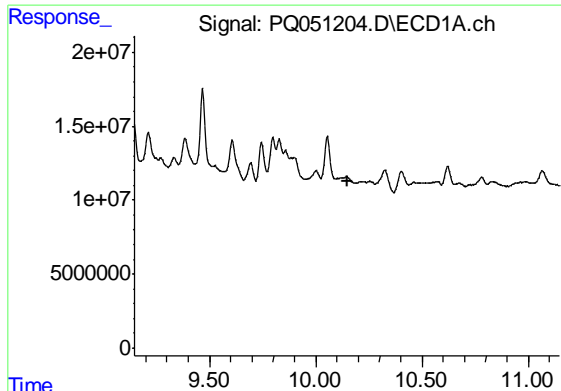
#42 AR-1268-2

R.T.: 9.857 min
 Delta R.T.: -0.045 min
 Response: 19796084
 Conc: 7.95 ng/ml



#42 AR-1268-2

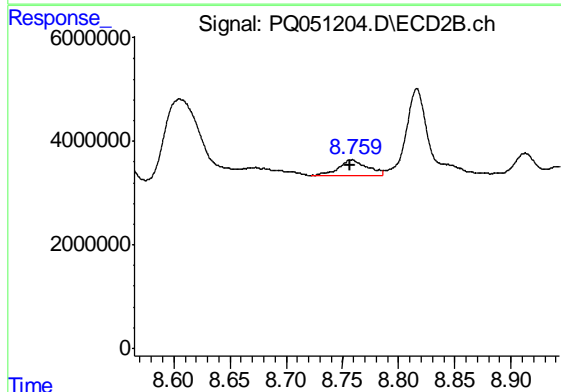
R.T.: 8.542 min
 Delta R.T.: -0.003 min
 Response: 32770589
 Conc: 36.89 ng/ml



#43 AR-1268-3

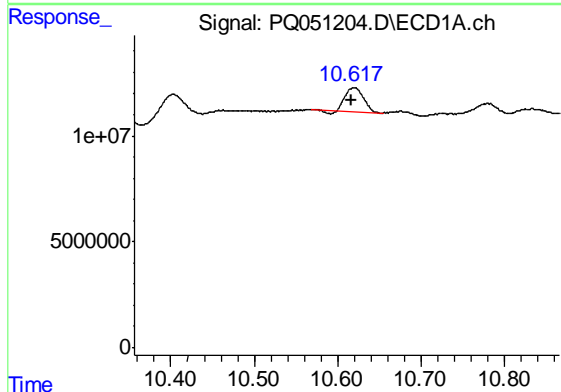
R.T.: 0.000 min
 Exp R.T. : 10.147 min
 Response: 0
 Conc: N.D.

Instrument :
 ECD_Q
 ClientSampled :
 CB7Z3



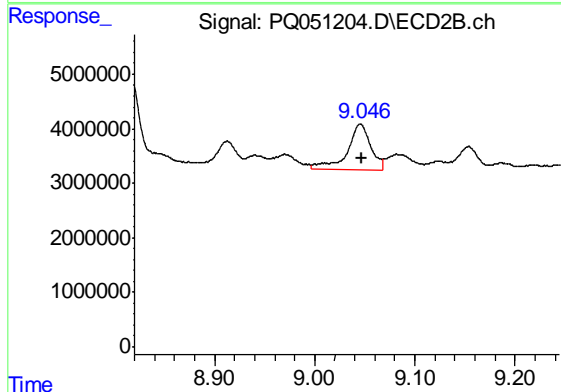
#43 AR-1268-3

R.T.: 8.758 min
 Delta R.T.: 0.002 min
 Response: 5497975
 Conc: 7.34 ng/ml



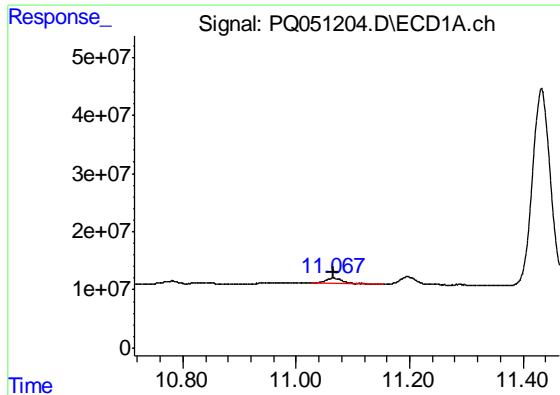
#44 AR-1268-4

R.T.: 10.619 min
 Delta R.T.: 0.003 min
 Response: 16631333
 Conc: 17.79 ng/ml



#44 AR-1268-4

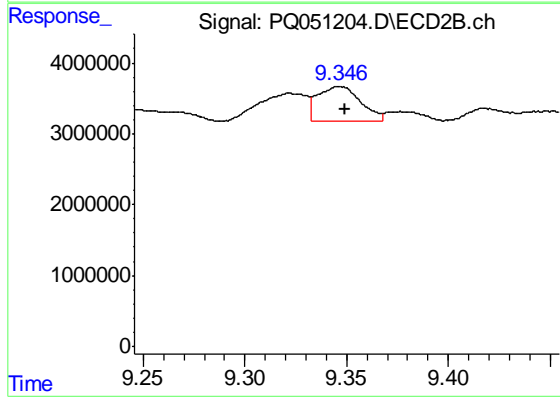
R.T.: 9.046 min
 Delta R.T.: -0.002 min
 Response: 13464859
 Conc: 42.92 ng/ml



#45 AR-1268-5

R.T.: 11.065 min
Delta R.T.: 0.000 min
Response: 22245372
Conc: 2.96 ng/ml

Instrument :
ECD_Q
ClientSampleId :
CB7Z3



#45 AR-1268-5

R.T.: 9.346 min
Delta R.T.: -0.003 min
Response: 7064160
Conc: 2.90 ng/ml