

Data Path : Z:\pestpcbsrv\HPCHEM1\ECD_Q\Data\PQ112519\
 Data File : PQ045383.D
 Signal(s) : Signal #1: ECD1A.ch Signal #2: ECD2B.ch
 Acq On : 26 Nov 2019 01:03
 Operator : SM\AJ
 Sample : AR1248ICC400
 Misc :
 ALS Vial : 25 Sample Multiplier: 1

Instrument :
 ECD_Q
 ClientSampleId :

Integration File signal 1: autoint1.e
 Integration File signal 2: autoint2.e
 Quant Time: Nov 26 04:38:20 2019
 Quant Method : Z:\pestpcbsrv\HPCHEM1\ECD_Q\Method\PQ112519CLP.M
 Quant Title : GC EXTRACTABLES
 QLast Update : Tue Nov 26 04:37:13 2019
 Response via : Initial Calibration
 Integrator: ChemStation

Volume Inj. : 1 µl
 Signal #1 Phase : ZB MR1 Signal #2 Phase: ZB MR2
 Signal #1 Info : 30Mx0.32mmx 0.5µm Signal #2 Info : 30M x 0.32mm x 0.25µm

Compound	RT#1	RT#2	Resp#1	Resp#2	ng/ml	ng/ml

System Monitoring Compounds						
1) SA Tetrachlo...	5.100	4.308	74775792	42084595	20.000	20.000
2) SA Decachlor...	11.151	9.716	281.6E6	230.4E6	40.000	40.000
Target Compounds						
21) L5 AR-1248-1	6.412	5.586	33173209	19206418	400.000	400.000
22) L5 AR-1248-2	6.706	5.850	52484212	27185625	400.000	400.000
23) L5 AR-1248-3	6.923	5.896	57061431	29007475	400.000	400.000
24) L5 AR-1248-4	7.348	6.084	65302434	35992040	400.000	400.000
25) L5 AR-1248-5	7.388	6.510	63329849	39136048	400.000	400.000

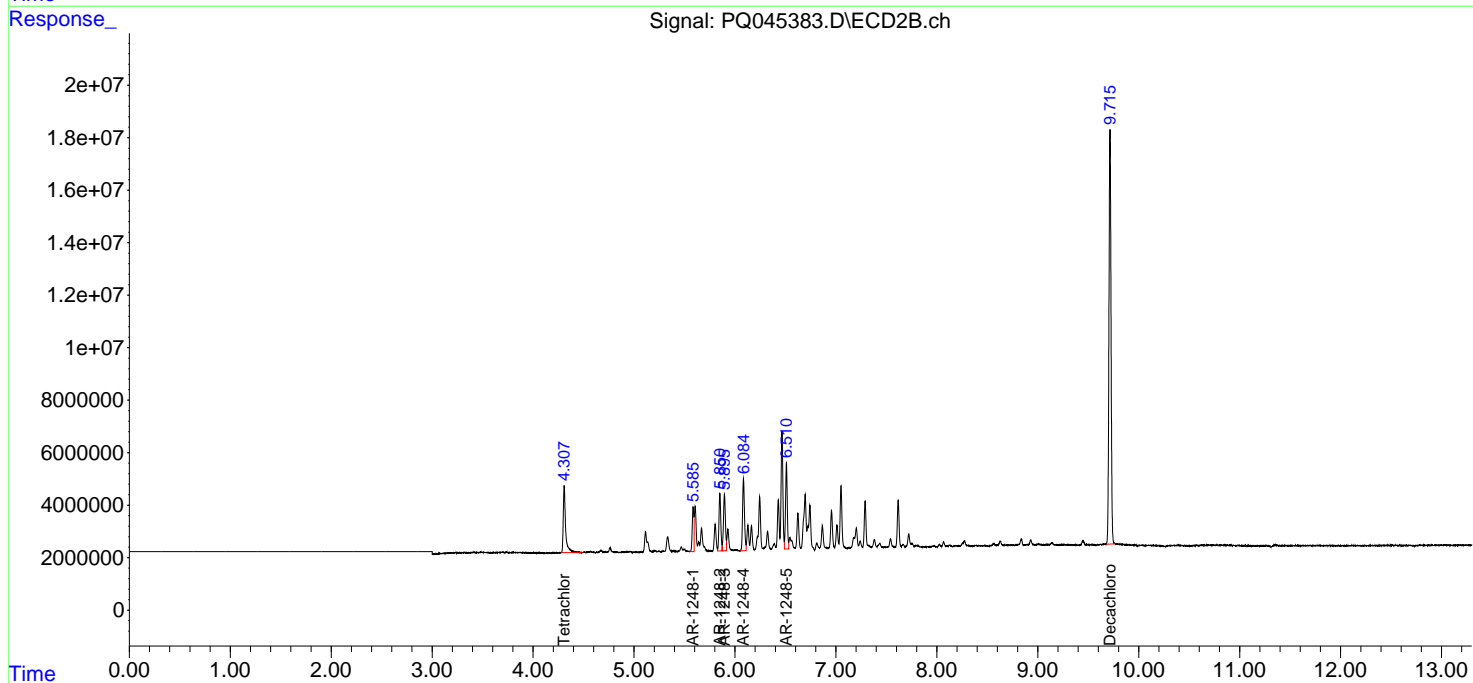
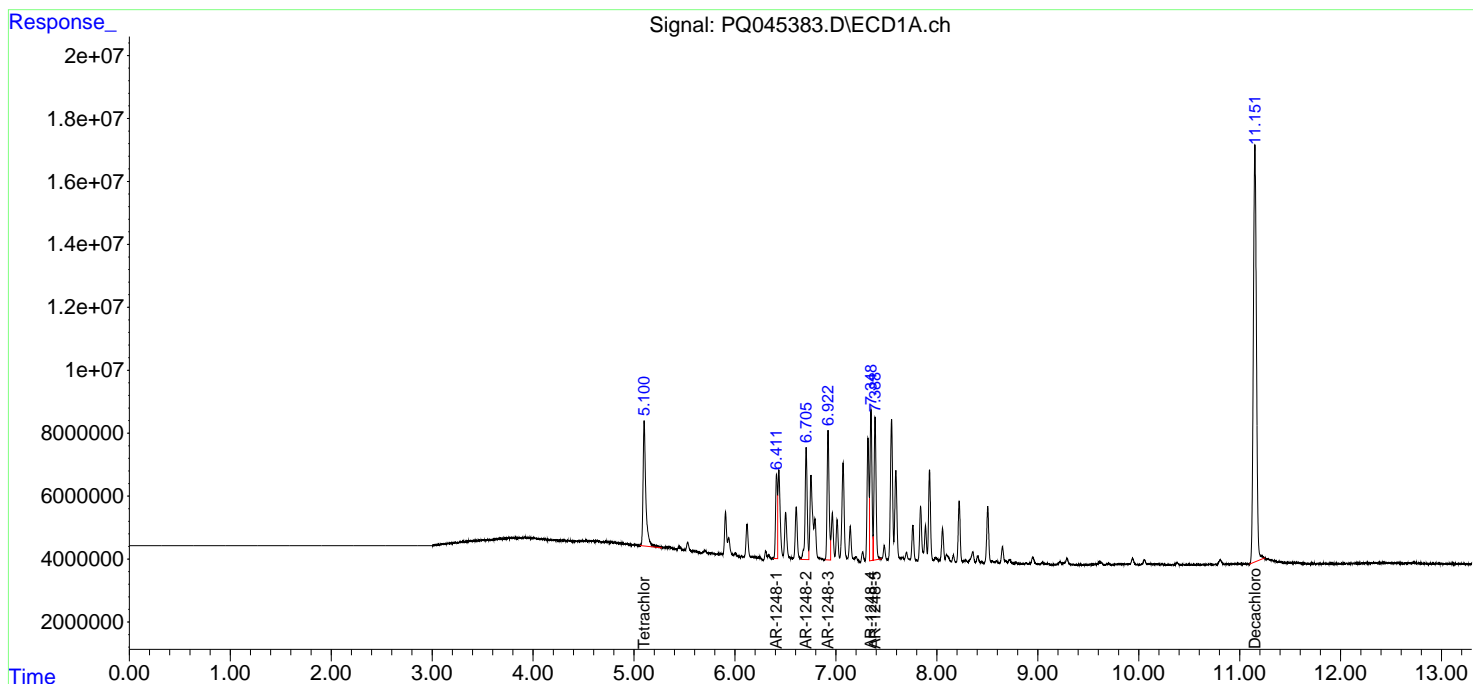
(f)=RT Delta > 1/2 Window (#)=Amounts differ by > 25% (m)=manual int.

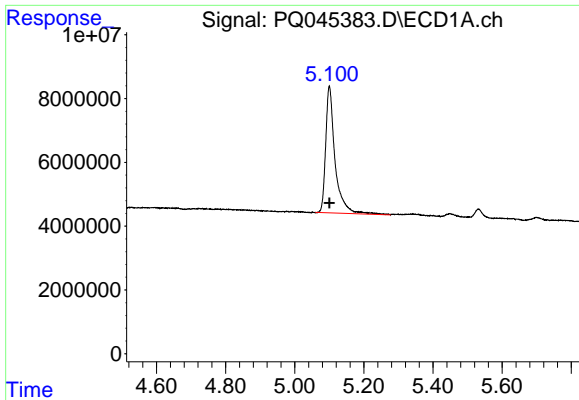
Data Path : Z:\pestpcbsrv\HPCHEM1\ECD_Q\Data\PQ112519\
 Data File : PQ045383.D
 Signal(s) : Signal #1: ECD1A.ch Signal #2: ECD2B.ch
 Acq On : 26 Nov 2019 01:03
 Operator : SM\AJ
 Sample : AR1248ICC400
 Misc :
 ALS Vial : 25 Sample Multiplier: 1

Instrument :
 ECD_Q
 ClientSampled :

Integration File signal 1: autoint1.e
 Integration File signal 2: autoint2.e
 Quant Time: Nov 26 04:38:20 2019
 Quant Method : Z:\pestpcbsrv\HPCHEM1\ECD_Q\Method\PQ112519CLP.M
 Quant Title : GC EXTRACTABLES
 QLast Update : Tue Nov 26 04:37:13 2019
 Response via : Initial Calibration
 Integrator: ChemStation

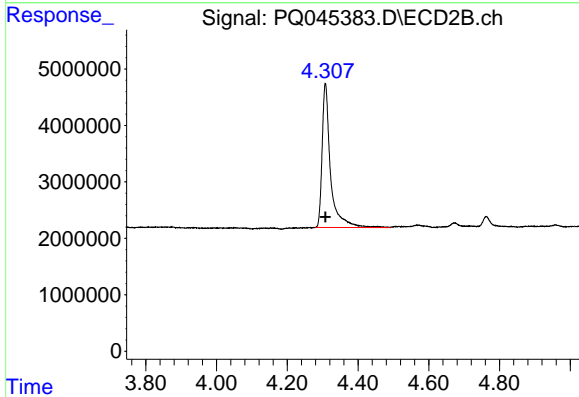
Volume Inj. : 1 µl
 Signal #1 Phase : ZB MR1 Signal #2 Phase: ZB MR2
 Signal #1 Info : 30Mx0.32mmx 0.5µm Signal #2 Info : 30M x 0.32mm x 0.25µm



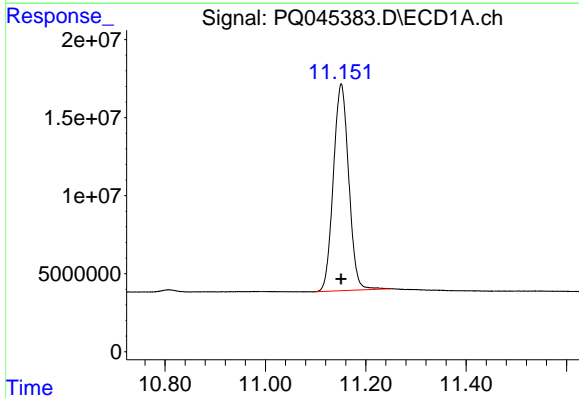


#1 Tetrachloro-m-xylene
 R.T.: 5.100 min
 Delta R.T.: 0.000 min
 Response: 74775792
 Conc: 20.00 ng/ml

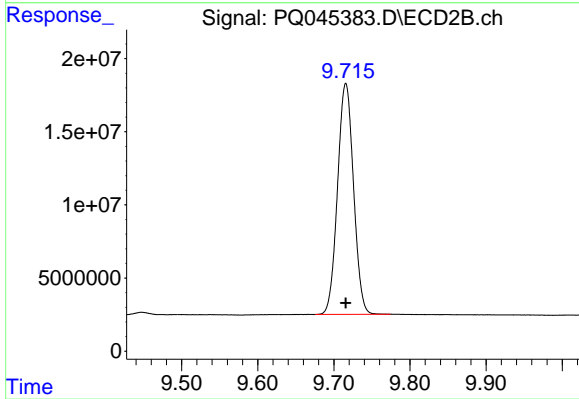
Instrument :
 ECD_Q
 ClientSampleId :



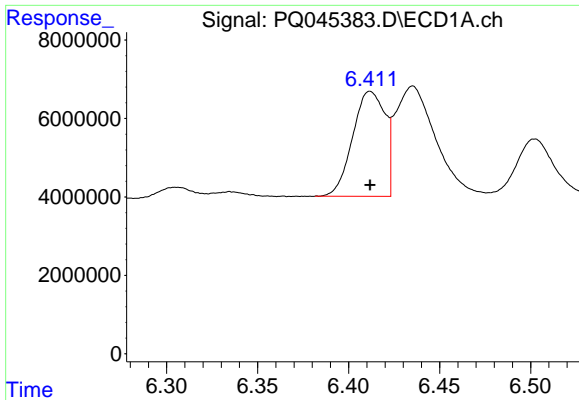
#1 Tetrachloro-m-xylene
 R.T.: 4.308 min
 Delta R.T.: 0.000 min
 Response: 42084595
 Conc: 20.00 ng/ml



#2 Decachlorobiphenyl
 R.T.: 11.151 min
 Delta R.T.: 0.000 min
 Response: 281592198
 Conc: 40.00 ng/ml



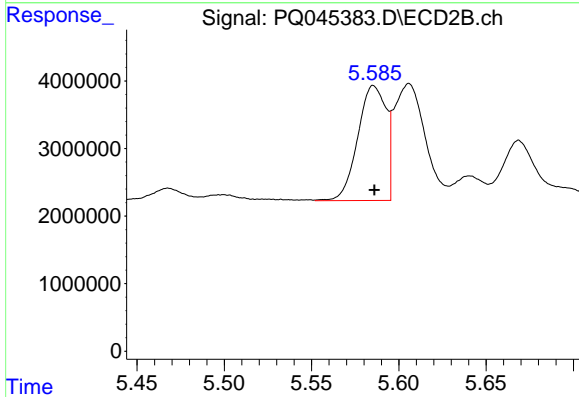
#2 Decachlorobiphenyl
 R.T.: 9.716 min
 Delta R.T.: 0.000 min
 Response: 230374782
 Conc: 40.00 ng/ml



#21 AR-1248-1

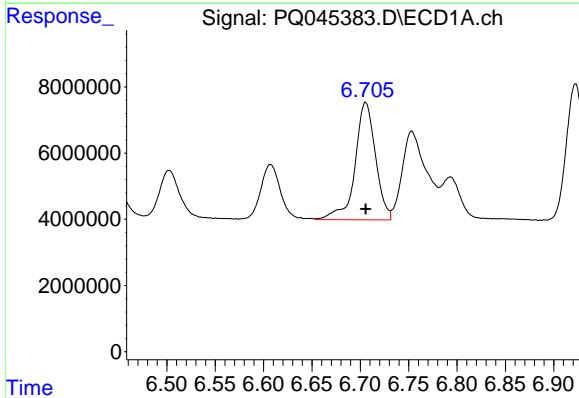
R.T.: 6.412 min
 Delta R.T.: 0.000 min
 Response: 33173209
 Conc: 400.00 ng/ml

Instrument :
 ECD_Q
 ClientSampled :



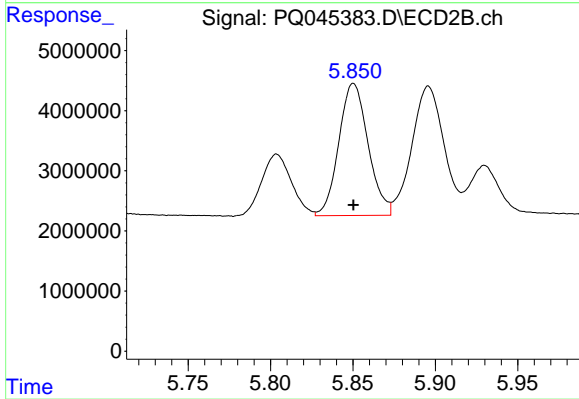
#21 AR-1248-1

R.T.: 5.586 min
 Delta R.T.: 0.000 min
 Response: 19206418
 Conc: 400.00 ng/ml



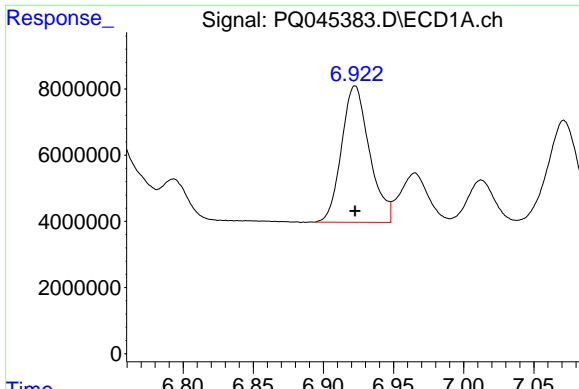
#22 AR-1248-2

R.T.: 6.706 min
 Delta R.T.: 0.000 min
 Response: 52484212
 Conc: 400.00 ng/ml



#22 AR-1248-2

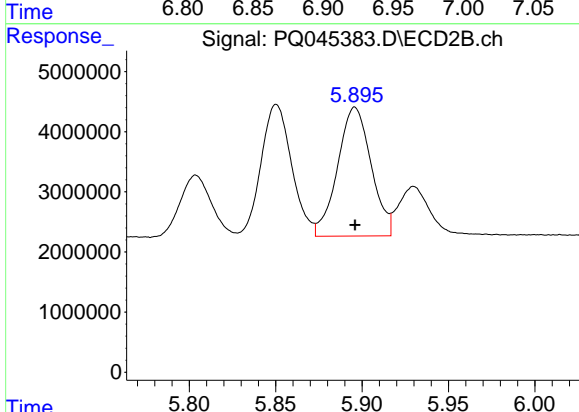
R.T.: 5.850 min
 Delta R.T.: 0.000 min
 Response: 27185625
 Conc: 400.00 ng/ml



#23 AR-1248-3

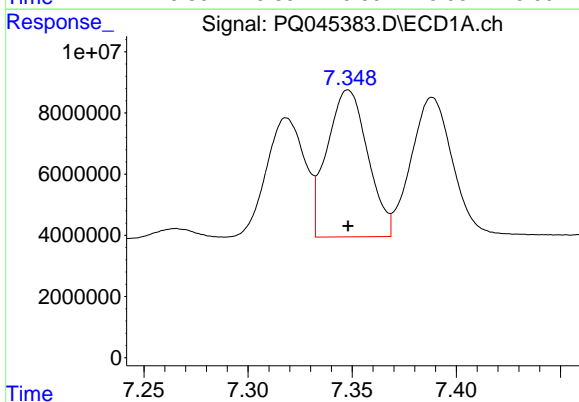
R.T.: 6.923 min
 Delta R.T.: 0.000 min
 Response: 57061431
 Conc: 400.00 ng/ml

Instrument :
 ECD_Q
 ClientSampleId :



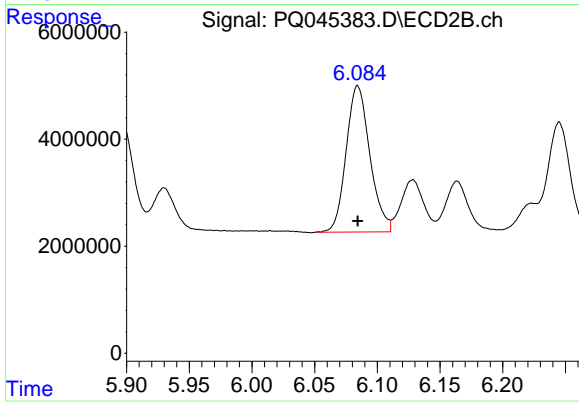
#23 AR-1248-3

R.T.: 5.896 min
 Delta R.T.: 0.000 min
 Response: 29007475
 Conc: 400.00 ng/ml



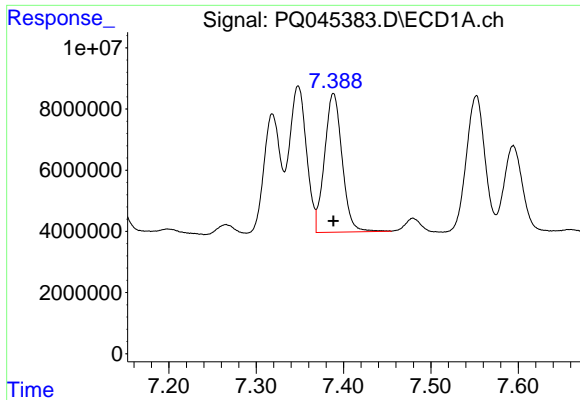
#24 AR-1248-4

R.T.: 7.348 min
 Delta R.T.: 0.000 min
 Response: 65302434
 Conc: 400.00 ng/ml



#24 AR-1248-4

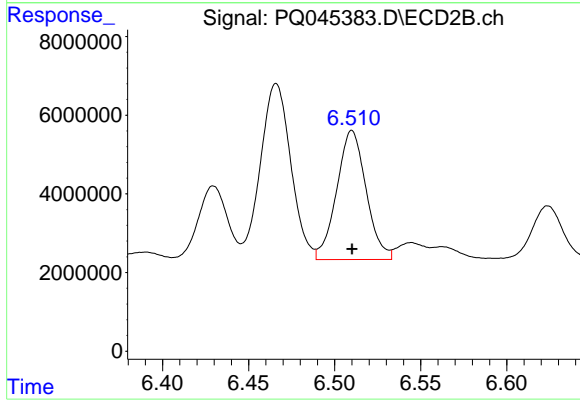
R.T.: 6.084 min
 Delta R.T.: 0.000 min
 Response: 35992040
 Conc: 400.00 ng/ml



#25 AR-1248-5

R.T.: 7.388 min
Delta R.T.: 0.000 min
Response: 63329849
Conc: 400.00 ng/ml

Instrument :
ECD_Q
ClientSampleId :



#25 AR-1248-5

R.T.: 6.510 min
Delta R.T.: 0.000 min
Response: 39136048
Conc: 400.00 ng/ml