

Data Path : Z:\pestpcbsrv\HPCHEM1\ECD_Q\Data\PQ112524\
 Data File : PQ069569.D
 Signal(s) : Signal #1: ECD1A.ch Signal #2: ECD2B.ch
 Acq On : 25 Nov 2024 09:30
 Operator : YP\AJ
 Sample : AR1660CCC400
 Misc :
 ALS Vial : 3 Sample Multiplier: 1

Instrument :
 ECD_Q
 ClientSampleId :

Integration File signal 1: autoint1.e
 Integration File signal 2: autoint2.e
 Quant Time: Nov 25 23:38:47 2024
 Quant Method : Z:\pestpcbsrv\HPCHEM1\ECD_Q\Method\PQ111824CLP.M
 Quant Title : GC EXTRACTABLES
 QLast Update : Wed Nov 20 07:44:43 2024
 Response via : Initial Calibration
 Integrator: ChemStation

Volume Inj. : 1 µl
 Signal #1 Phase : ZB MR1 Signal #2 Phase: ZB MR2
 Signal #1 Info : 30Mx0.32mmx 0.5µm Signal #2 Info : 30M x 0.32mm x 0.25µm

	Compound	RT#1	RT#2	Resp#1	Resp#2	ng/ml	ng/ml

System Monitoring Compounds							
1)	SA Tetrachlo...	3.337	2.738	159.5E6	242.0E6	21.992	22.372
2)	SA Decachlor...	8.477	7.477	119.7E6	316.4E6	43.981	47.154
Target Compounds							
3)	L1 AR-1016-1	4.427	3.728	101.6E6	161.9E6	455.301	445.086
4)	L1 AR-1016-2	4.446	3.743	152.4E6	241.4E6	452.673	449.498
5)	L1 AR-1016-3	4.503	3.903	94697943	129.5E6	458.609	448.301
6)	L1 AR-1016-4	4.594	3.952	78154841	106.4E6	456.471	453.519
7)	L1 AR-1016-5	4.879	4.145	74902936	134.3E6	448.461	451.451
8)	L2 AR-1221-1	3.533	2.934	10971490	17276183	138.072	135.666
9)	L2 AR-1221-2	3.614	3.011	13515735	22968124	250.474	255.678
10)	L2 AR-1221-3	3.683	3.078	56256713	86846018	309.179	304.450
11)	L3 AR-1232-1	3.683	3.078	56256713	86846018	391.088	370.535
12)	L3 AR-1232-2	4.171	3.743	76964483	241.4E6	967.686	937.947
13)	L3 AR-1232-3	4.446	3.903	152.4E6	129.5E6	1050.609	974.465
14)	L3 AR-1232-4	4.594	3.988	78154841	113.9E6	1053.633	1080.409
15)	L3 AR-1232-5	4.691	4.145	59816139	134.3E6	1255.189	1055.884
16)	L4 AR-1242-1	4.427	3.728	101.6E6	161.9E6	589.282	509.035
17)	L4 AR-1242-2	4.446	3.743	152.4E6	241.4E6	577.733	514.033
18)	L4 AR-1242-3	4.503	3.903	94697943	129.5E6	579.209	513.556
19)	L4 AR-1242-4	4.594	3.988	78154841	113.9E6	573.397	510.349
20)	L4 AR-1242-5	5.307	4.479	20990967	135.5E6	147.695	422.431 #
21)	L5 AR-1248-1	4.427	3.728	101.6E6	161.9E6	815.958	663.623
22)	L5 AR-1248-2	4.691	3.952	59816139	106.4E6	347.175	314.517
23)	L5 AR-1248-3	4.879	3.988	74902936	113.9E6	354.389	348.313
24)	L5 AR-1248-4	5.271	4.145	27902173	134.3E6	119.551	324.603 #
25)	L5 AR-1248-5	5.307	4.517	20990967	36457682	87.322	82.658
26)	L6 AR-1254-1	5.244	4.479	66959267	135.5E6	276.344	214.736
27)	L6 AR-1254-2	5.461	4.626	61663227	97769720	164.091	178.066
28)	L6 AR-1254-3	5.812	5.005	35231301	56167107	84.526	62.565 #
29)	L6 AR-1254-4	6.095	5.229	23448604	29567076	73.933	50.656 #
30)	L6 AR-1254-5	6.508	5.632	191.9E6	369.8E6	563.687	443.344
31)	L7 AR-1260-1	5.976	5.133	134.5E6	247.7E6	438.858	444.950
32)	L7 AR-1260-2	6.236	5.323	165.3E6	308.8E6	439.376	449.706
33)	L7 AR-1260-3	6.589	5.462	121.1E6	297.9E6	436.044	452.695
34)	L7 AR-1260-4	6.806	5.921	138.5E6	261.0E6	444.380	454.676
35)	L7 AR-1260-5	7.118	6.168	283.1E6	611.9E6	436.637	451.080
36)	L8 AR-1262-1	6.806	5.675	138.5E6	272.1E6	370.458	304.918
37)	L8 AR-1262-2	7.118	5.921	283.1E6	261.0E6	395.901	314.657
38)	L8 AR-1262-3	7.395	6.443	177.4E6	147.0E6	384.257	219.709 #
39)	L8 AR-1262-4	7.467	6.501	55606862	468.3E6	163.070	374.005 #
40)	L8 AR-1262-5	7.971	6.997	73052399	177.5E6	322.891	298.881
41)	L9 AR-1268-1	7.395	6.443	177.4E6	147.0E6	234.666	78.819 #

Data Path : Z:\pestpcbsrv\HPCHEM1\ECD_Q\Data\PQ112524\
 Data File : PQ069569.D
 Signal(s) : Signal #1: ECD1A.ch Signal #2: ECD2B.ch
 Acq On : 25 Nov 2024 09:30
 Operator : YP\AJ
 Sample : AR1660CCC400
 Misc :
 ALS Vial : 3 Sample Multiplier: 1

Instrument :
 ECD_Q
 ClientSampleId :

Integration File signal 1: autoint1.e
 Integration File signal 2: autoint2.e
 Quant Time: Nov 25 23:38:47 2024
 Quant Method : Z:\pestpcbsrv\HPCHEM1\ECD_Q\Method\PQ111824CLP.M
 Quant Title : GC EXTRACTABLES
 QLast Update : Wed Nov 20 07:44:43 2024
 Response via : Initial Calibration
 Integrator: ChemStation

Volume Inj. : 1 µl
 Signal #1 Phase : ZB MR1 Signal #2 Phase: ZB MR2
 Signal #1 Info : 30Mx0.32mmx 0.5µm Signal #2 Info : 30M x 0.32mm x 0.25µm

	Compound	RT#1	RT#2	Resp#1	Resp#2	ng/ml	ng/ml
42)	L9 AR-1268-2	7.467	6.501	55606862	468.3E6	80.858	265.365 #
43)	L9 AR-1268-3	7.648	6.704	4404286	12471070	7.757	8.256
44)	L9 AR-1268-4	7.971	6.997	73052399	177.5E6	306.925	276.039
45)	L9 AR-1268-5	8.254	7.263	18550625	62632751	10.354	12.979 #

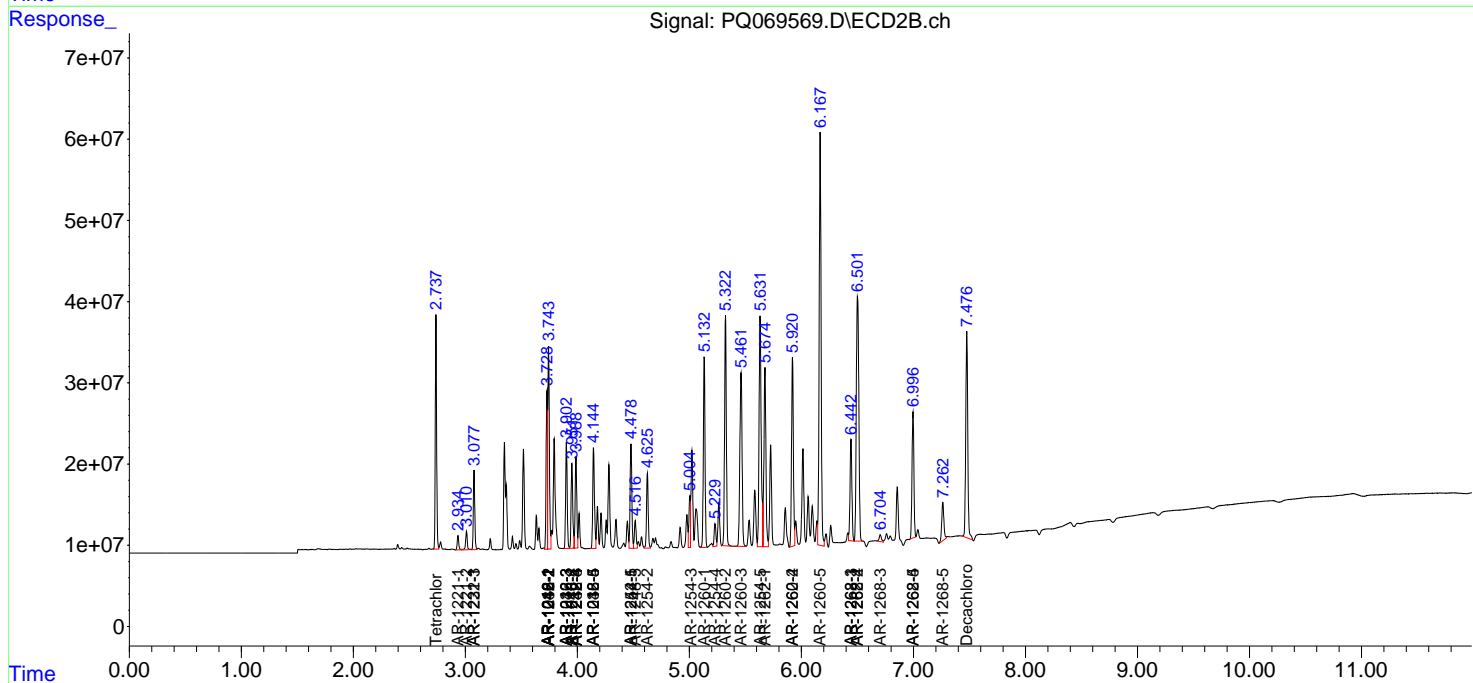
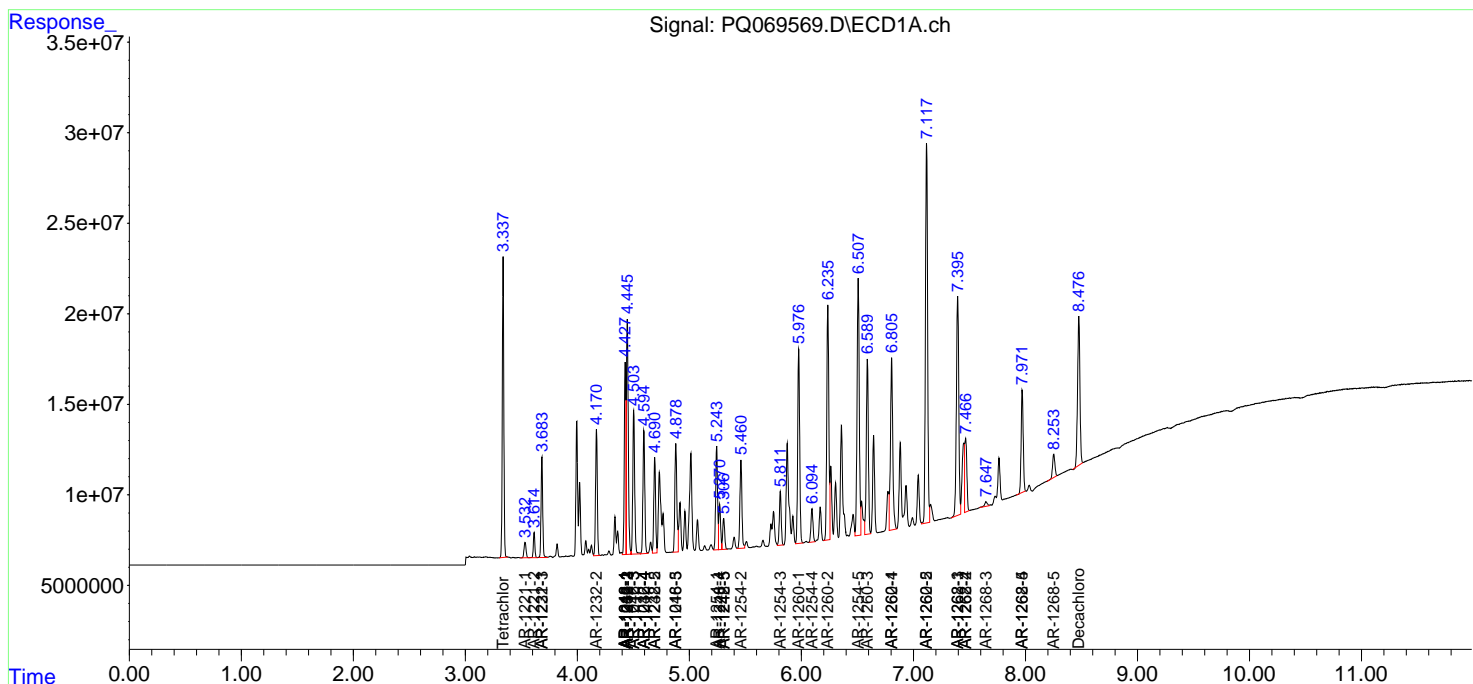
(f)=RT Delta > 1/2 Window (#)=Amounts differ by > 25% (m)=manual int.

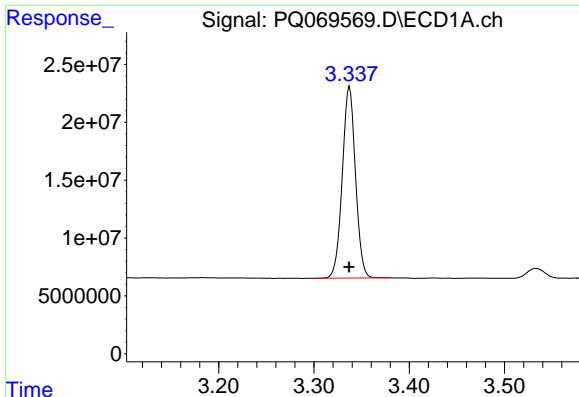
Data Path : Z:\pestpcbsrv\HPCHEM1\ECD_Q\Data\PQ112524\
 Data File : PQ069569.D
 Signal(s) : Signal #1: ECD1A.ch Signal #2: ECD2B.ch
 Acq On : 25 Nov 2024 09:30
 Operator : YP\AJ
 Sample : AR1660CCC400
 Misc :
 ALS Vial : 3 Sample Multiplier: 1

Instrument :
 ECD_Q
 ClientSampleId :

Integration File signal 1: autoint1.e
 Integration File signal 2: autoint2.e
 Quant Time: Nov 25 23:38:47 2024
 Quant Method : Z:\pestpcbsrv\HPCHEM1\ECD_Q\Method\PQ111824CLP.M
 Quant Title : GC EXTRACTABLES
 QLast Update : Wed Nov 20 07:44:43 2024
 Response via : Initial Calibration
 Integrator: ChemStation

Volume Inj. : 1 µl
 Signal #1 Phase : ZB MR1 Signal #2 Phase: ZB MR2
 Signal #1 Info : 30Mx0.32mmx 0.5µm Signal #2 Info : 30M x 0.32mm x 0.25µm

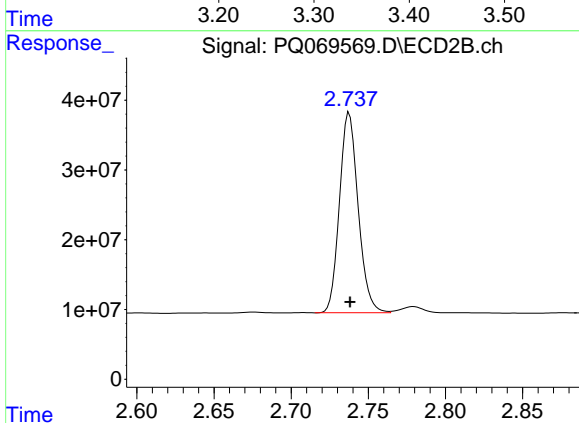




#1 Tetrachloro-m-xylene

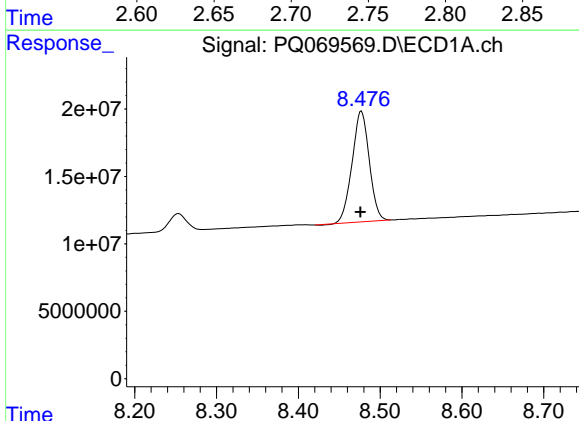
R.T.: 3.337 min
 Delta R.T.: 0.000 min
 Response: 159540907
 Conc: 21.99 ng/ml

Instrument :
 ECD_Q
 ClientSampleId :



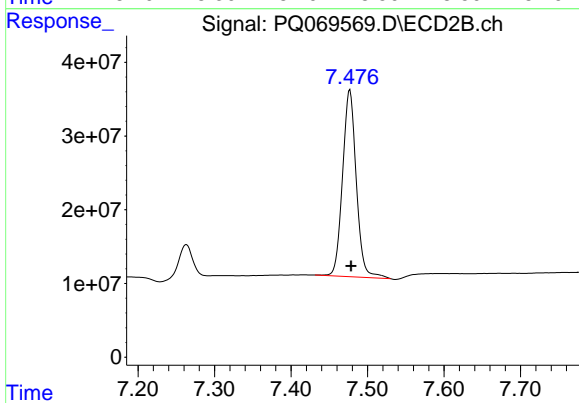
#1 Tetrachloro-m-xylene

R.T.: 2.738 min
 Delta R.T.: 0.000 min
 Response: 242033069
 Conc: 22.37 ng/ml



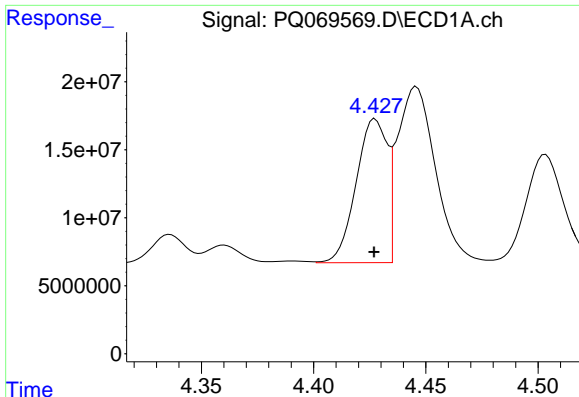
#2 Decachlorobiphenyl

R.T.: 8.477 min
 Delta R.T.: 0.000 min
 Response: 119658625
 Conc: 43.98 ng/ml



#2 Decachlorobiphenyl

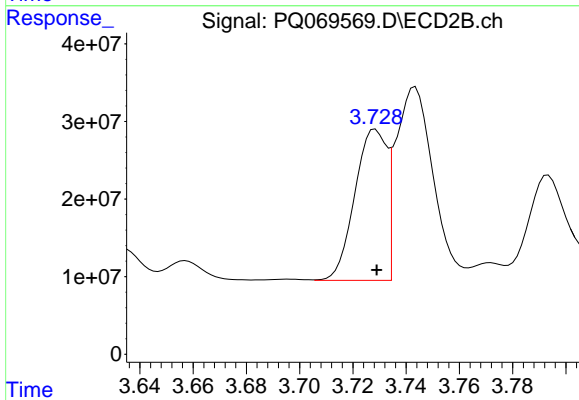
R.T.: 7.477 min
 Delta R.T.: -0.002 min
 Response: 316393903
 Conc: 47.15 ng/ml



#3 AR-1016-1

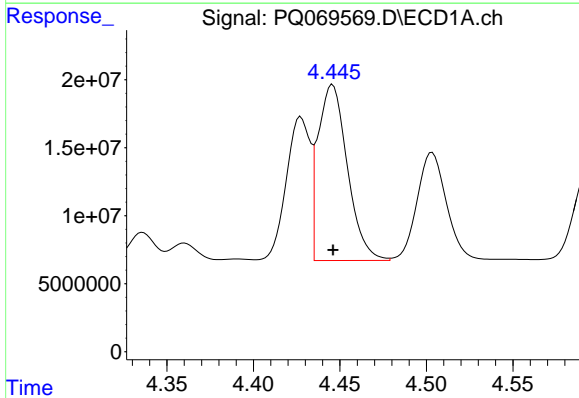
R.T.: 4.427 min
 Delta R.T.: 0.000 min
 Response: 101614406
 Conc: 455.30 ng/ml

Instrument :
 ECD_Q
 ClientSampleId :



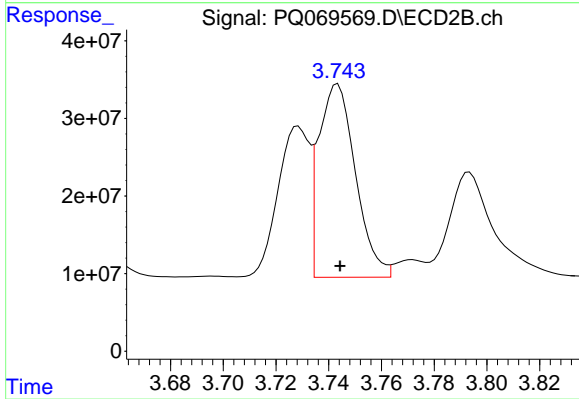
#3 AR-1016-1

R.T.: 3.728 min
 Delta R.T.: 0.000 min
 Response: 161909061
 Conc: 445.09 ng/ml



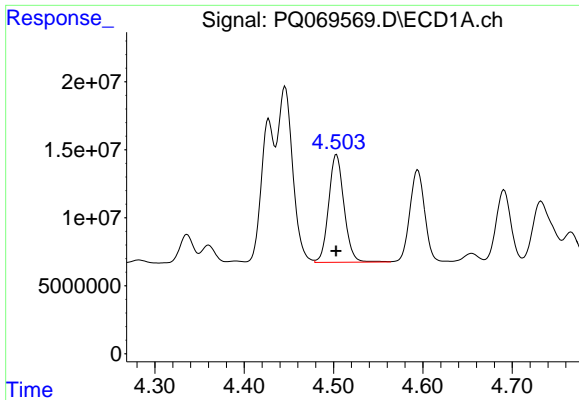
#4 AR-1016-2

R.T.: 4.446 min
 Delta R.T.: 0.000 min
 Response: 152377430
 Conc: 452.67 ng/ml



#4 AR-1016-2

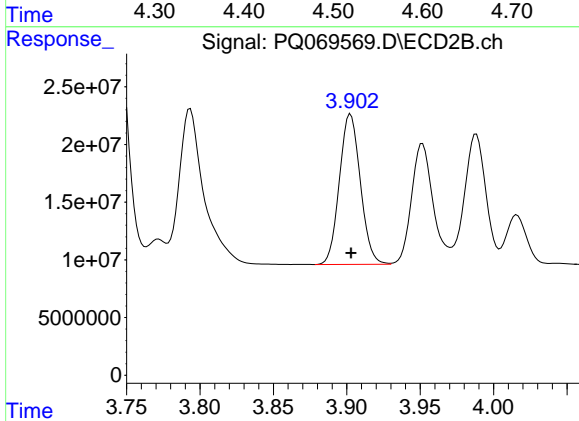
R.T.: 3.743 min
 Delta R.T.: 0.000 min
 Response: 241447490
 Conc: 449.50 ng/ml



#5 AR-1016-3

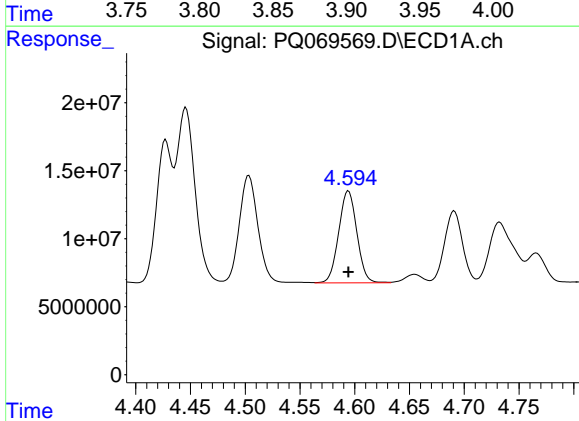
R.T.: 4.503 min
 Delta R.T.: 0.000 min
 Response: 94697943
 Conc: 458.61 ng/ml

Instrument :
 ECD_Q
 ClientSampleId :



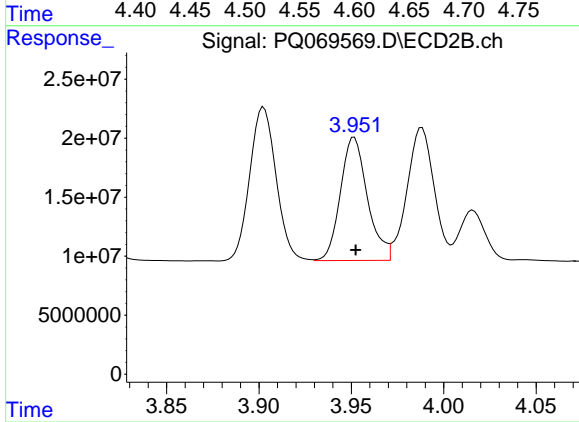
#5 AR-1016-3

R.T.: 3.903 min
 Delta R.T.: 0.000 min
 Response: 129519806
 Conc: 448.30 ng/ml



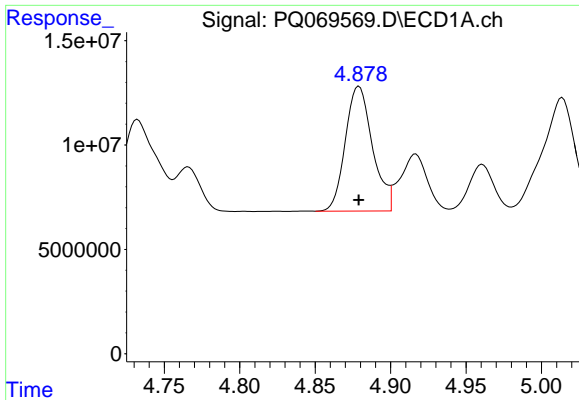
#6 AR-1016-4

R.T.: 4.594 min
 Delta R.T.: 0.000 min
 Response: 78154841
 Conc: 456.47 ng/ml



#6 AR-1016-4

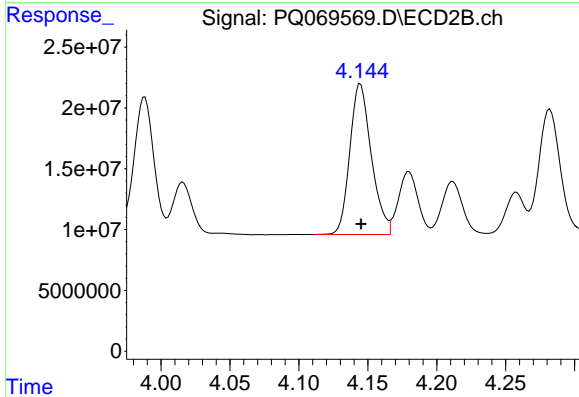
R.T.: 3.952 min
 Delta R.T.: 0.000 min
 Response: 106357201
 Conc: 453.52 ng/ml



#7 AR-1016-5

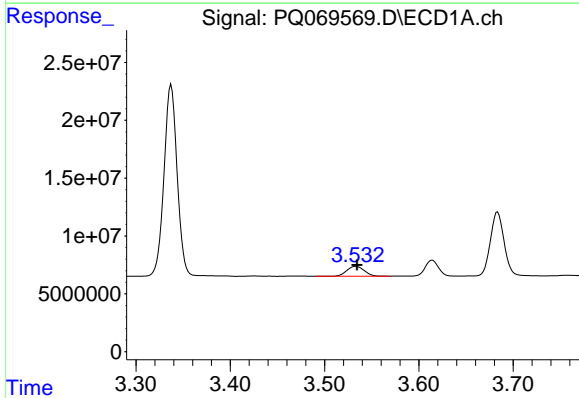
R.T.: 4.879 min
 Delta R.T.: 0.000 min
 Response: 74902936
 Conc: 448.46 ng/ml

Instrument :
 ECD_Q
 ClientSampleId :



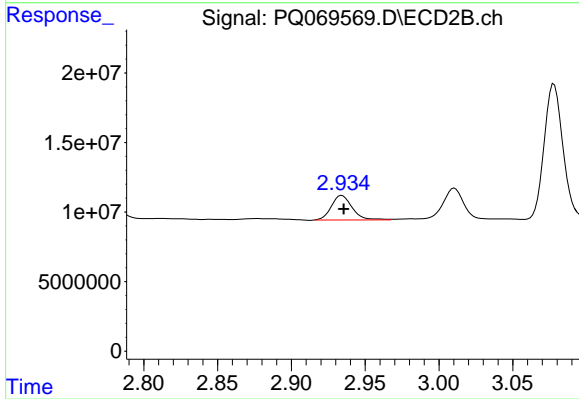
#7 AR-1016-5

R.T.: 4.145 min
 Delta R.T.: 0.000 min
 Response: 134334248
 Conc: 451.45 ng/ml



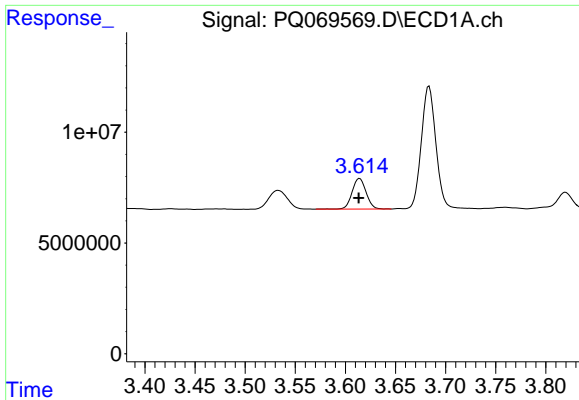
#8 AR-1221-1

R.T.: 3.533 min
 Delta R.T.: -0.002 min
 Response: 10971490
 Conc: 138.07 ng/ml



#8 AR-1221-1

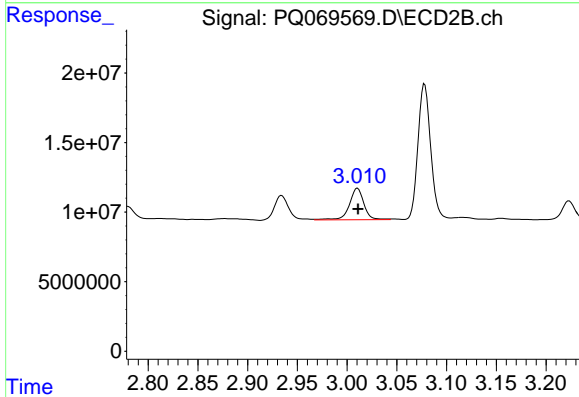
R.T.: 2.934 min
 Delta R.T.: -0.001 min
 Response: 17276183
 Conc: 135.67 ng/ml



#9 AR-1221-2

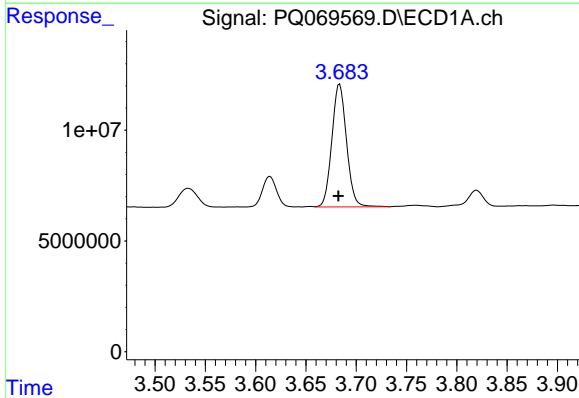
R.T.: 3.614 min
 Delta R.T.: 0.000 min
 Response: 13515735
 Conc: 250.47 ng/ml

Instrument :
 ECD_Q
 ClientSampleId :



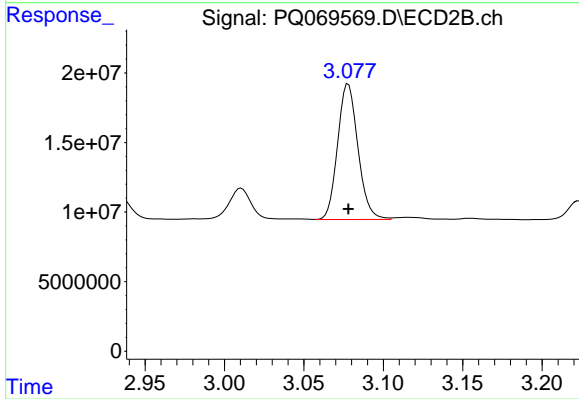
#9 AR-1221-2

R.T.: 3.011 min
 Delta R.T.: 0.000 min
 Response: 22968124
 Conc: 255.68 ng/ml



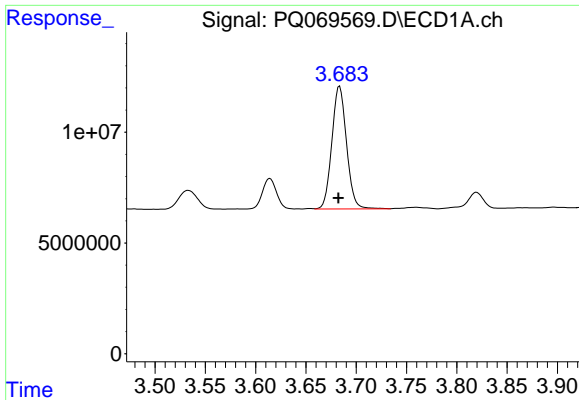
#10 AR-1221-3

R.T.: 3.683 min
 Delta R.T.: 0.001 min
 Response: 56256713
 Conc: 309.18 ng/ml



#10 AR-1221-3

R.T.: 3.078 min
 Delta R.T.: 0.000 min
 Response: 86846018
 Conc: 304.45 ng/ml

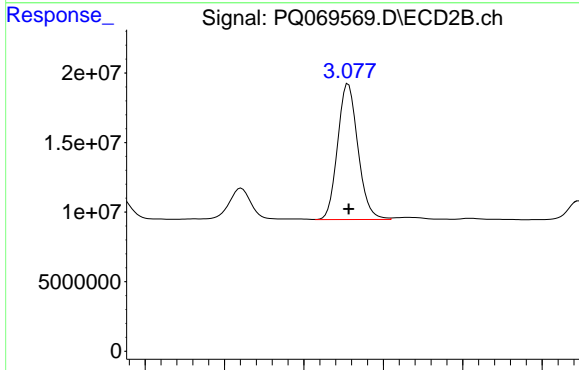


#11 AR-1232-1

R.T.: 3.683 min
 Delta R.T.: 0.001 min
 Response: 56256713
 Conc: 391.09 ng/ml

Instrument :
 ECD_Q
 ClientSampleId :

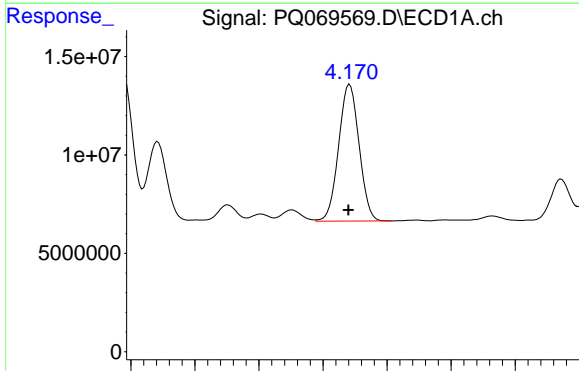
Time 3.50 3.55 3.60 3.65 3.70 3.75 3.80 3.85 3.90



#11 AR-1232-1

R.T.: 3.078 min
 Delta R.T.: 0.000 min
 Response: 86846018
 Conc: 370.53 ng/ml

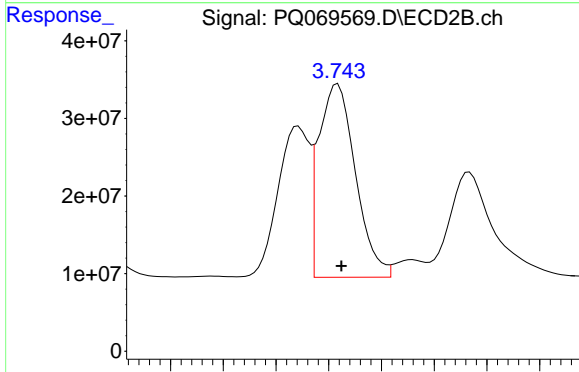
Time 2.95 3.00 3.05 3.10 3.15 3.20



#12 AR-1232-2

R.T.: 4.171 min
 Delta R.T.: 0.000 min
 Response: 76964483
 Conc: 967.69 ng/ml

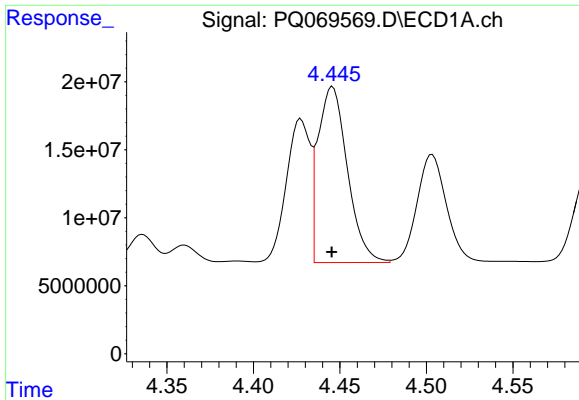
Time 4.00 4.05 4.10 4.15 4.20 4.25 4.30



#12 AR-1232-2

R.T.: 3.743 min
 Delta R.T.: -0.001 min
 Response: 241447490
 Conc: 937.95 ng/ml

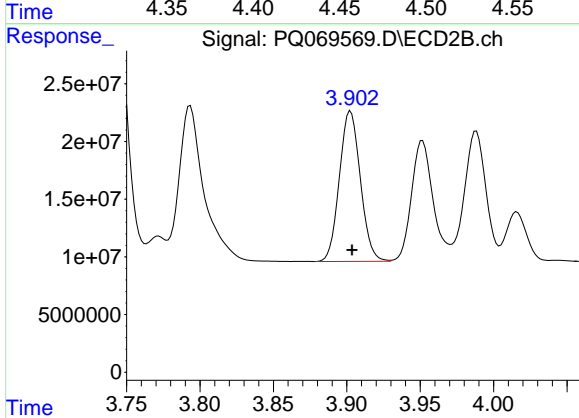
Time 3.68 3.70 3.72 3.74 3.76 3.78 3.80 3.82



#13 AR-1232-3

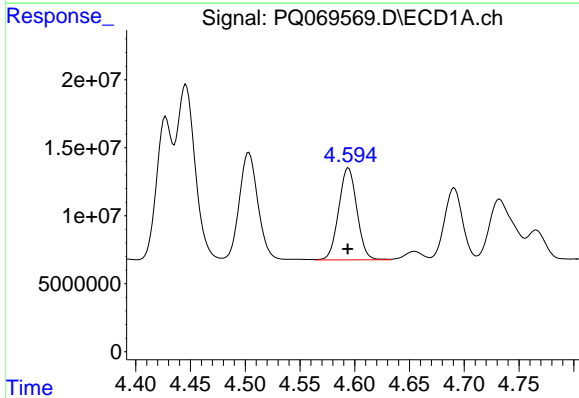
R.T.: 4.446 min
 Delta R.T.: 0.000 min
 Response: 152377430
 Conc: 1050.61 ng/ml

Instrument :
 ECD_Q
 ClientSampleId :



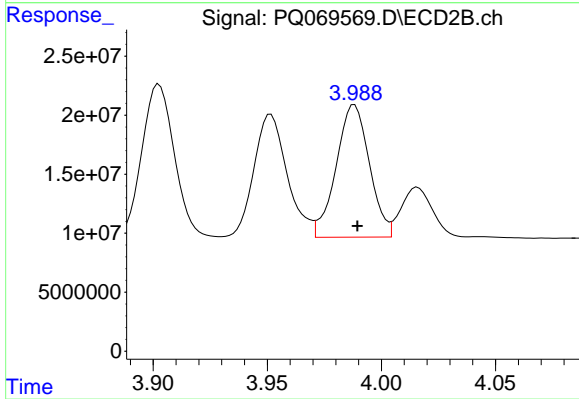
#13 AR-1232-3

R.T.: 3.903 min
 Delta R.T.: 0.000 min
 Response: 129519806
 Conc: 974.46 ng/ml



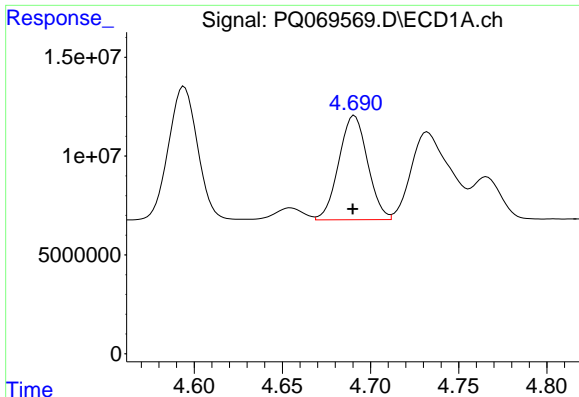
#14 AR-1232-4

R.T.: 4.594 min
 Delta R.T.: 0.000 min
 Response: 78154841
 Conc: 1053.63 ng/ml



#14 AR-1232-4

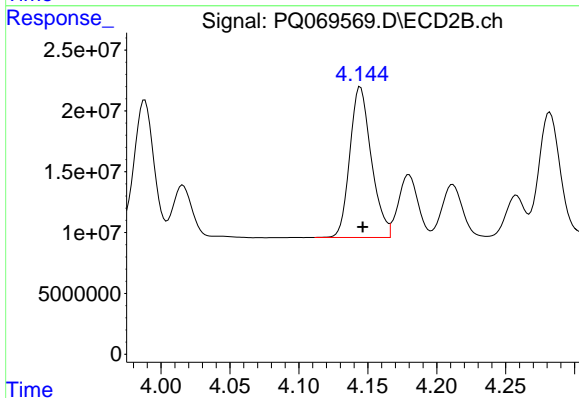
R.T.: 3.988 min
 Delta R.T.: -0.001 min
 Response: 113851634
 Conc: 1080.41 ng/ml



#15 AR-1232-5

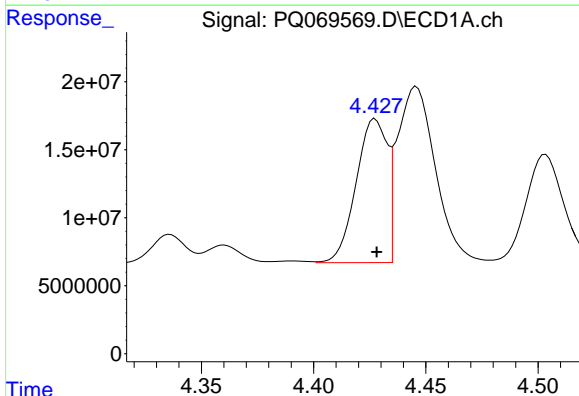
R.T.: 4.691 min
 Delta R.T.: 0.000 min
 Response: 59816139
 Conc: 1255.19 ng/ml

Instrument :
 ECD_Q
 ClientSampleId :



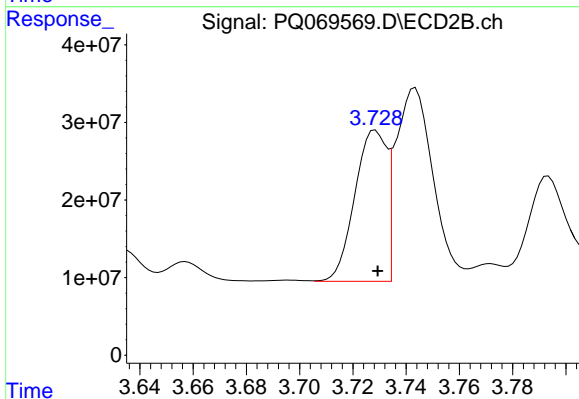
#15 AR-1232-5

R.T.: 4.145 min
 Delta R.T.: -0.002 min
 Response: 134334248
 Conc: 1055.88 ng/ml



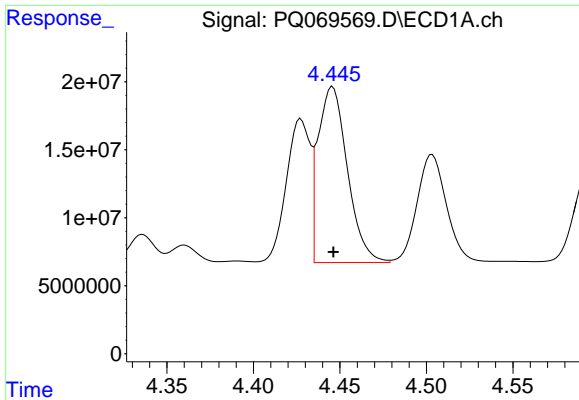
#16 AR-1242-1

R.T.: 4.427 min
 Delta R.T.: 0.000 min
 Response: 101614406
 Conc: 589.28 ng/ml



#16 AR-1242-1

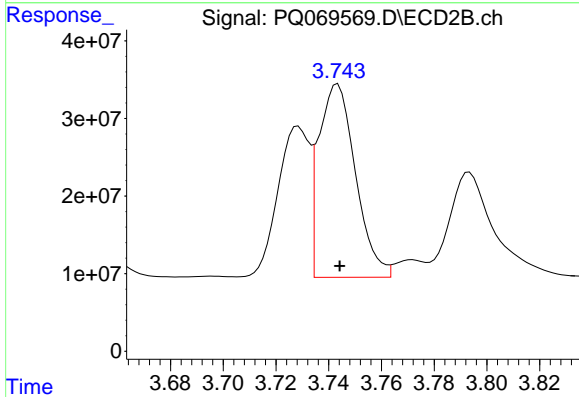
R.T.: 3.728 min
 Delta R.T.: 0.000 min
 Response: 161909061
 Conc: 509.04 ng/ml



#17 AR-1242-2

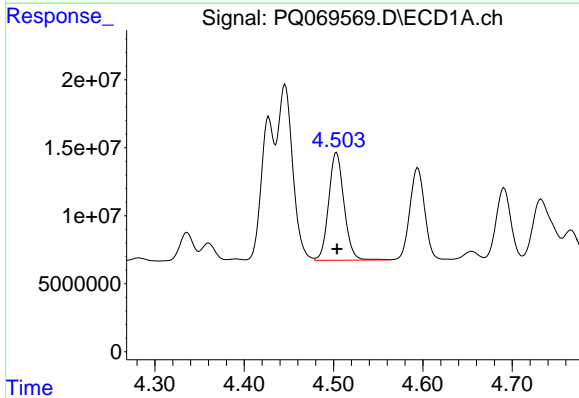
R.T.: 4.446 min
 Delta R.T.: 0.000 min
 Response: 152377430
 Conc: 577.73 ng/ml

Instrument :
 ECD_Q
 ClientSampleId :



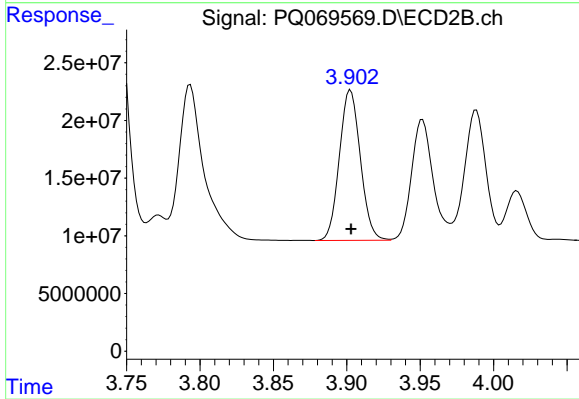
#17 AR-1242-2

R.T.: 3.743 min
 Delta R.T.: 0.000 min
 Response: 241447490
 Conc: 514.03 ng/ml



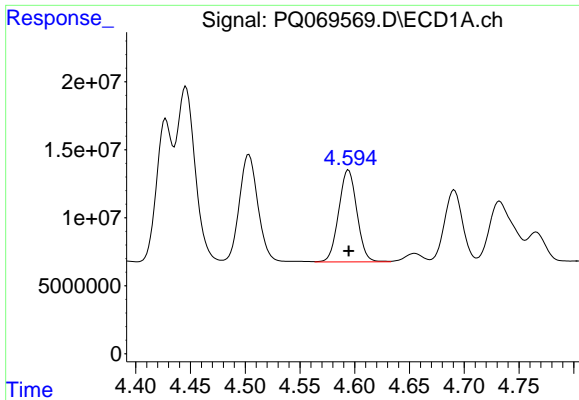
#18 AR-1242-3

R.T.: 4.503 min
 Delta R.T.: 0.000 min
 Response: 94697943
 Conc: 579.21 ng/ml



#18 AR-1242-3

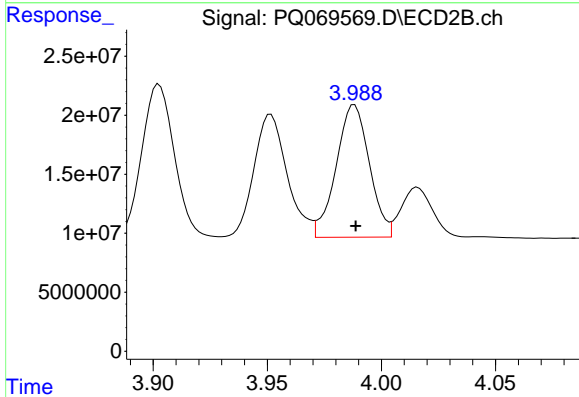
R.T.: 3.903 min
 Delta R.T.: 0.000 min
 Response: 129519806
 Conc: 513.56 ng/ml



#19 AR-1242-4

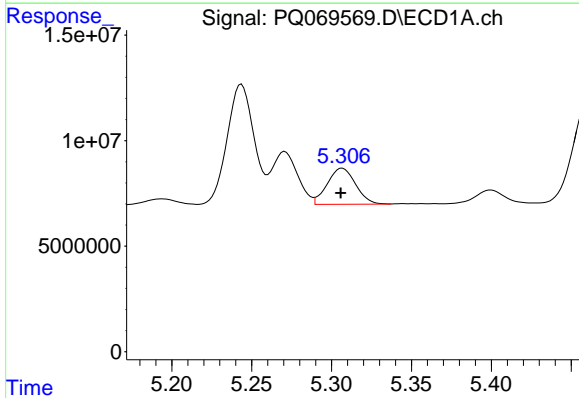
R.T.: 4.594 min
 Delta R.T.: 0.000 min
 Response: 78154841
 Conc: 573.40 ng/ml

Instrument :
 ECD_Q
 ClientSampleId :



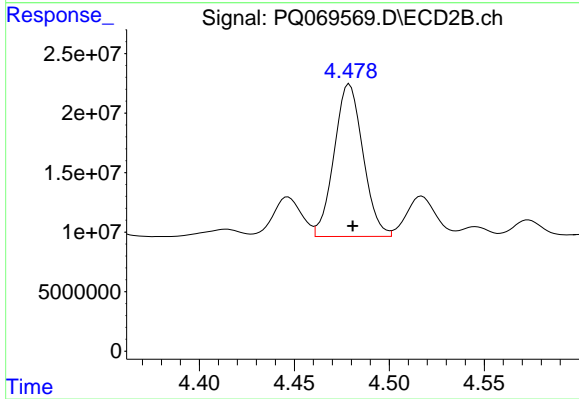
#19 AR-1242-4

R.T.: 3.988 min
 Delta R.T.: 0.000 min
 Response: 113851634
 Conc: 510.35 ng/ml



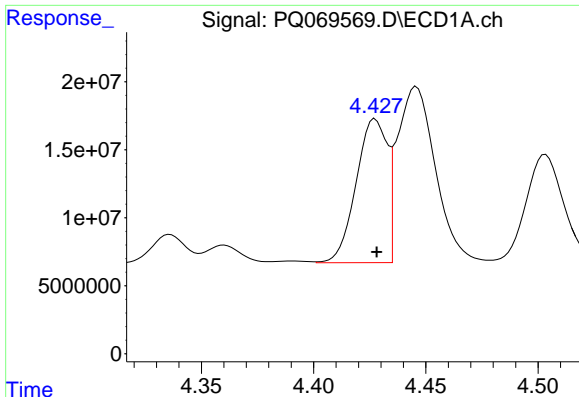
#20 AR-1242-5

R.T.: 5.307 min
 Delta R.T.: 0.001 min
 Response: 20990967
 Conc: 147.69 ng/ml



#20 AR-1242-5

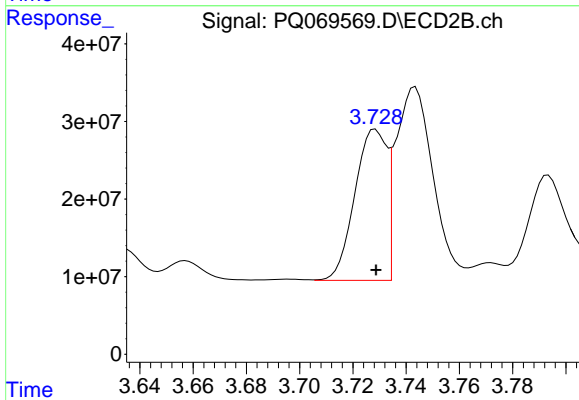
R.T.: 4.479 min
 Delta R.T.: -0.002 min
 Response: 135507567
 Conc: 422.43 ng/ml



#21 AR-1248-1

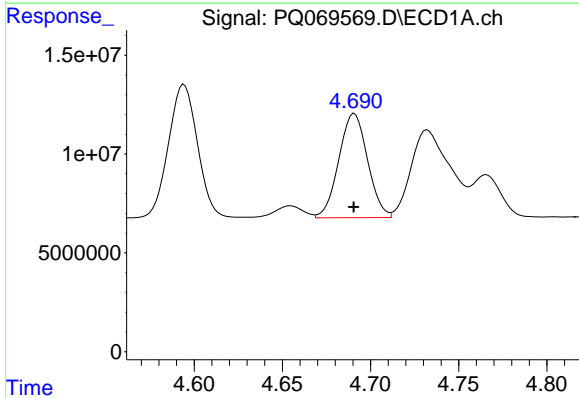
R.T.: 4.427 min
 Delta R.T.: 0.000 min
 Response: 101614406
 Conc: 815.96 ng/ml

Instrument :
 ECD_Q
 ClientSampleId :



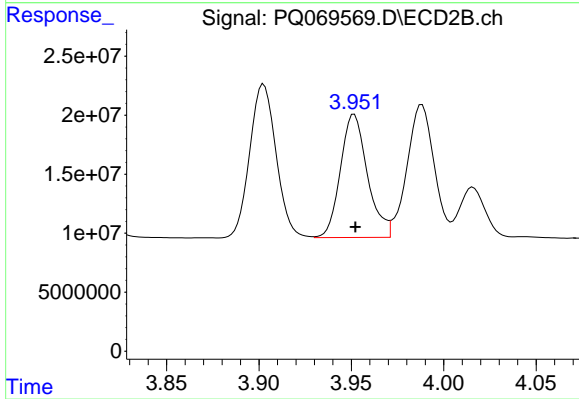
#21 AR-1248-1

R.T.: 3.728 min
 Delta R.T.: 0.000 min
 Response: 161909061
 Conc: 663.62 ng/ml



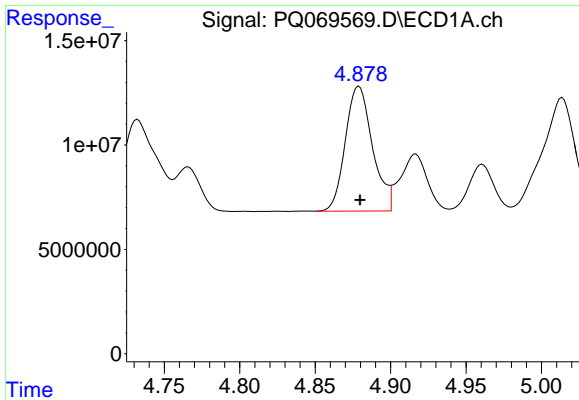
#22 AR-1248-2

R.T.: 4.691 min
 Delta R.T.: 0.000 min
 Response: 59816139
 Conc: 347.17 ng/ml



#22 AR-1248-2

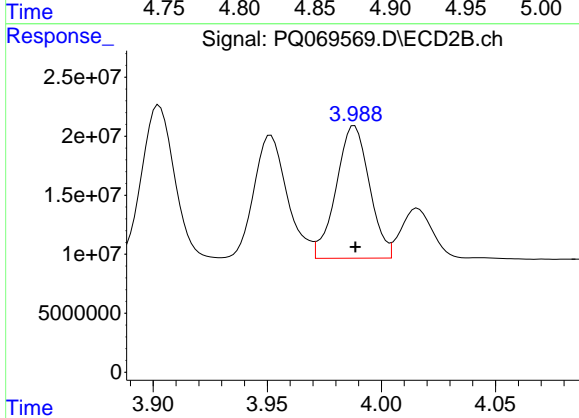
R.T.: 3.952 min
 Delta R.T.: 0.000 min
 Response: 106357201
 Conc: 314.52 ng/ml



#23 AR-1248-3

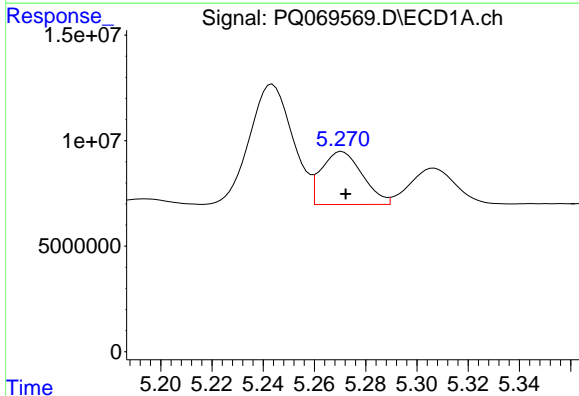
R.T.: 4.879 min
 Delta R.T.: 0.000 min
 Response: 74902936
 Conc: 354.39 ng/ml

Instrument :
 ECD_Q
 ClientSampleId :



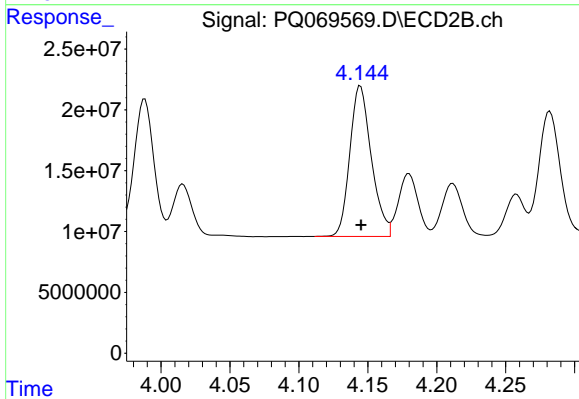
#23 AR-1248-3

R.T.: 3.988 min
 Delta R.T.: 0.000 min
 Response: 113851634
 Conc: 348.31 ng/ml



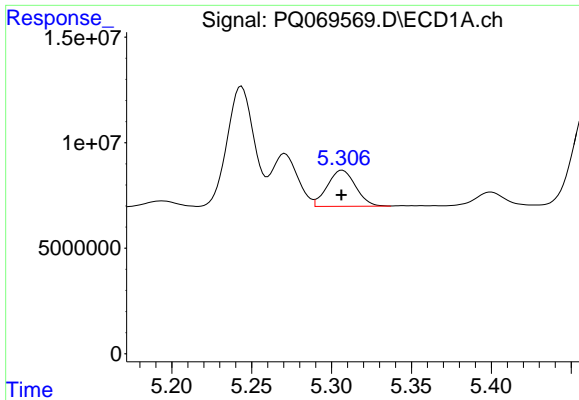
#24 AR-1248-4

R.T.: 5.271 min
 Delta R.T.: -0.001 min
 Response: 27902173
 Conc: 119.55 ng/ml



#24 AR-1248-4

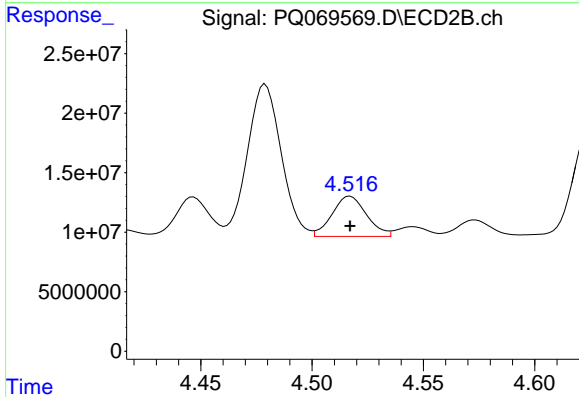
R.T.: 4.145 min
 Delta R.T.: 0.000 min
 Response: 134334248
 Conc: 324.60 ng/ml



#25 AR-1248-5

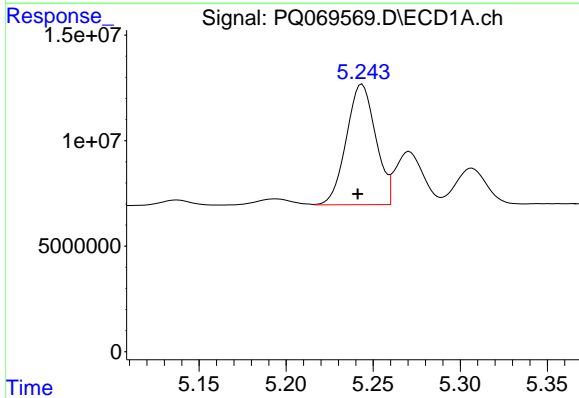
R.T.: 5.307 min
 Delta R.T.: 0.000 min
 Response: 20990967
 Conc: 87.32 ng/ml

Instrument :
 ECD_Q
 ClientSampleId :



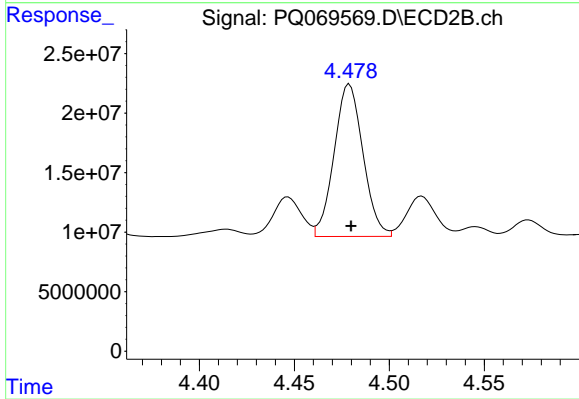
#25 AR-1248-5

R.T.: 4.517 min
 Delta R.T.: 0.000 min
 Response: 36457682
 Conc: 82.66 ng/ml



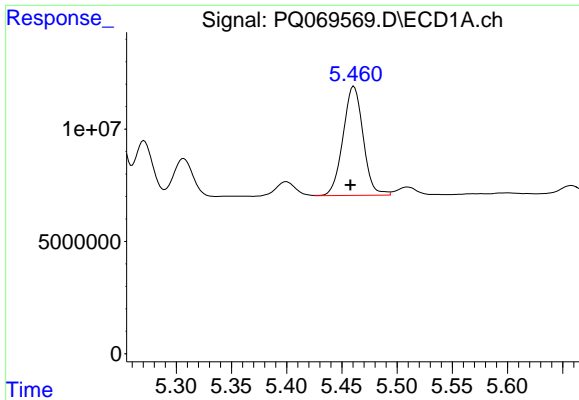
#26 AR-1254-1

R.T.: 5.244 min
 Delta R.T.: 0.003 min
 Response: 66959267
 Conc: 276.34 ng/ml



#26 AR-1254-1

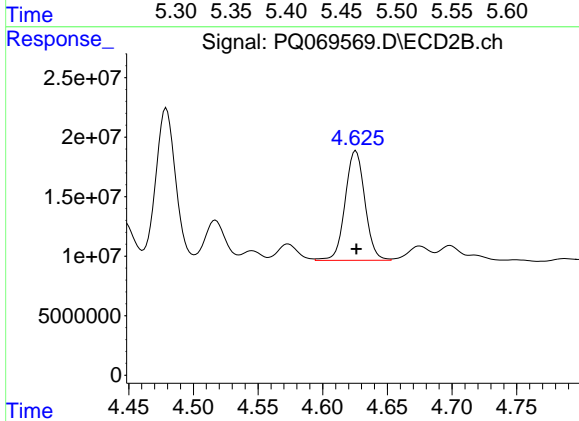
R.T.: 4.479 min
 Delta R.T.: 0.000 min
 Response: 135507567
 Conc: 214.74 ng/ml



#27 AR-1254-2

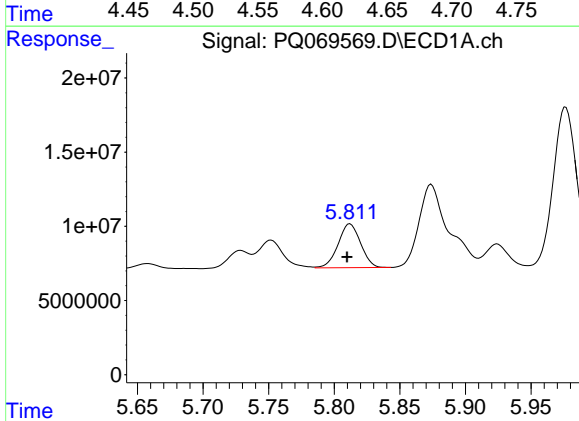
R.T.: 5.461 min
 Delta R.T.: 0.003 min
 Response: 61663227
 Conc: 164.09 ng/ml

Instrument :
 ECD_Q
 ClientSampleId :



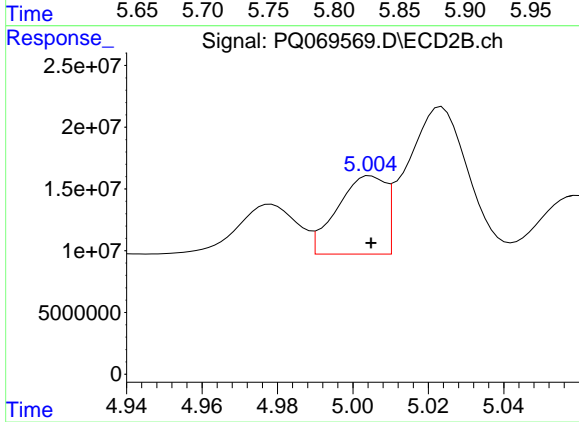
#27 AR-1254-2

R.T.: 4.626 min
 Delta R.T.: 0.000 min
 Response: 97769720
 Conc: 178.07 ng/ml



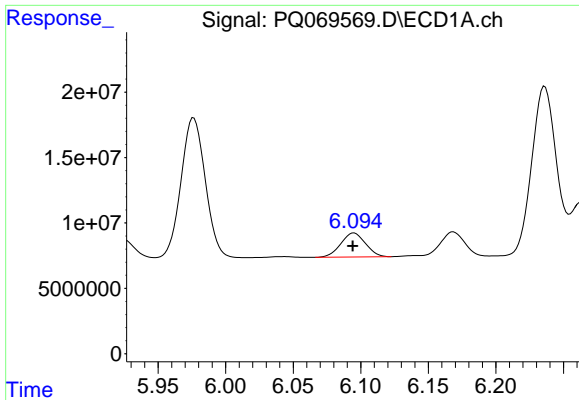
#28 AR-1254-3

R.T.: 5.812 min
 Delta R.T.: 0.002 min
 Response: 35231301
 Conc: 84.53 ng/ml



#28 AR-1254-3

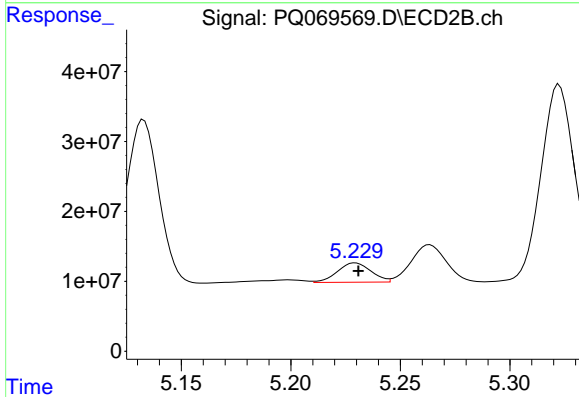
R.T.: 5.005 min
 Delta R.T.: 0.000 min
 Response: 56167107
 Conc: 62.56 ng/ml



#29 AR-1254-4

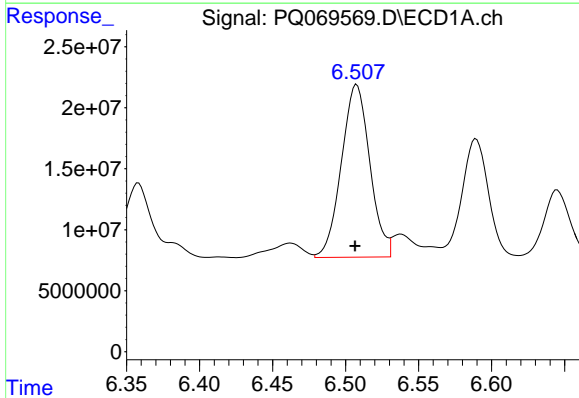
R.T.: 6.095 min
 Delta R.T.: 0.000 min
 Response: 23448604
 Conc: 73.93 ng/ml

Instrument :
 ECD_Q
 ClientSampleId :



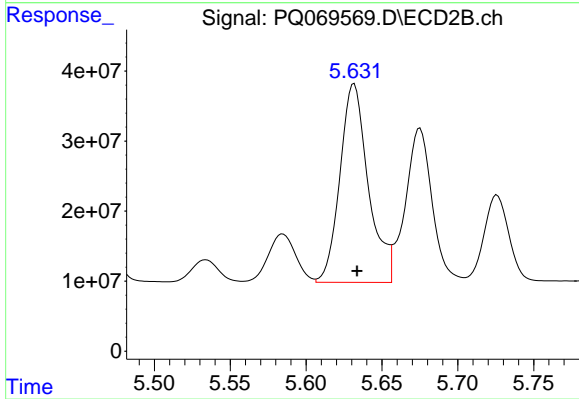
#29 AR-1254-4

R.T.: 5.229 min
 Delta R.T.: -0.001 min
 Response: 29567076
 Conc: 50.66 ng/ml



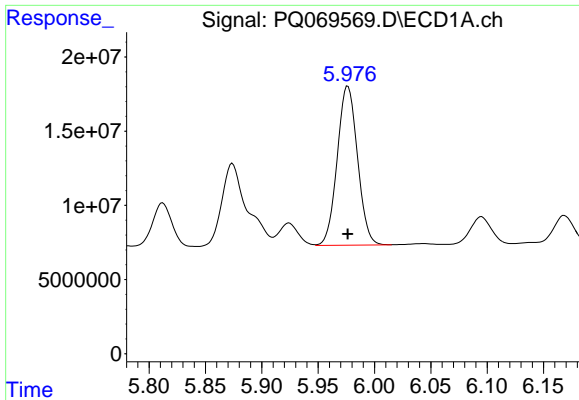
#30 AR-1254-5

R.T.: 6.508 min
 Delta R.T.: 0.001 min
 Response: 191877695
 Conc: 563.69 ng/ml



#30 AR-1254-5

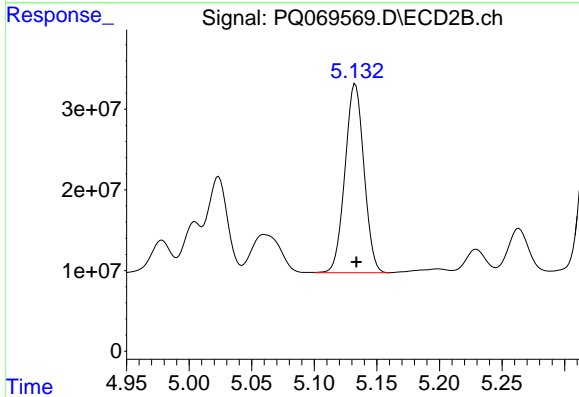
R.T.: 5.632 min
 Delta R.T.: -0.002 min
 Response: 369762558
 Conc: 443.34 ng/ml



#31 AR-1260-1

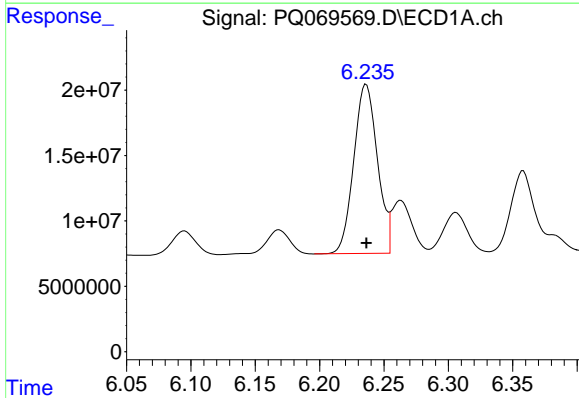
R.T.: 5.976 min
Delta R.T.: 0.000 min
Response: 134499766
Conc: 438.86 ng/ml

Instrument :
ECD_Q
ClientSampleId :



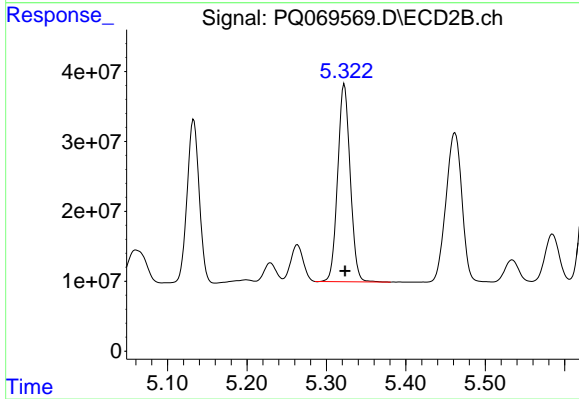
#31 AR-1260-1

R.T.: 5.133 min
Delta R.T.: 0.000 min
Response: 247733650
Conc: 444.95 ng/ml



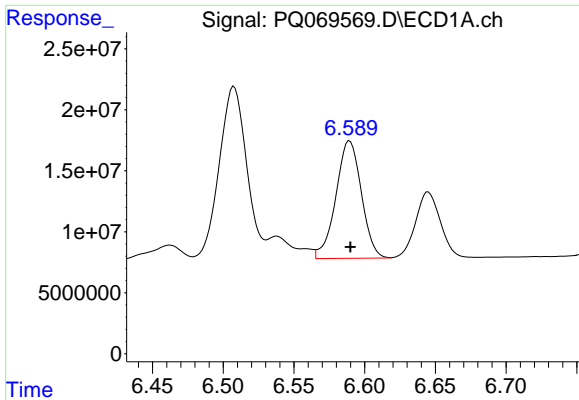
#32 AR-1260-2

R.T.: 6.236 min
Delta R.T.: 0.000 min
Response: 165281077
Conc: 439.38 ng/ml



#32 AR-1260-2

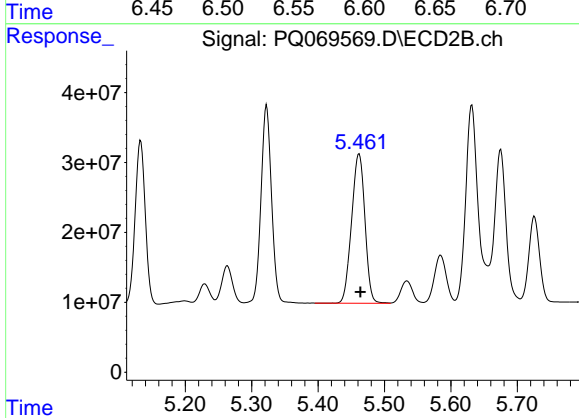
R.T.: 5.323 min
Delta R.T.: 0.000 min
Response: 308757476
Conc: 449.71 ng/ml



#33 AR-1260-3

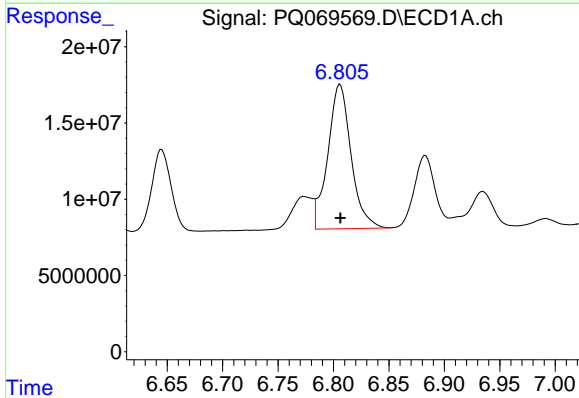
R.T.: 6.589 min
 Delta R.T.: 0.000 min
 Response: 121110850
 Conc: 436.04 ng/ml

Instrument :
 ECD_Q
 ClientSampleId :



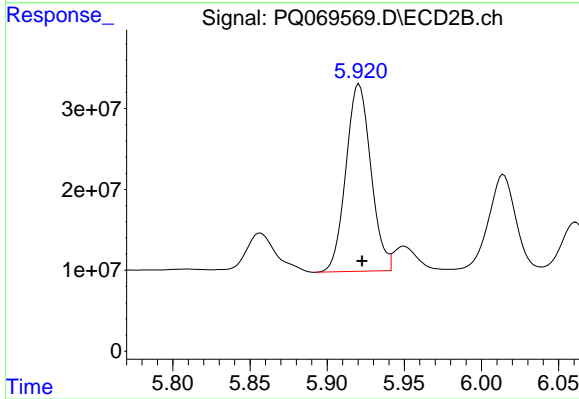
#33 AR-1260-3

R.T.: 5.462 min
 Delta R.T.: -0.002 min
 Response: 297933441
 Conc: 452.70 ng/ml



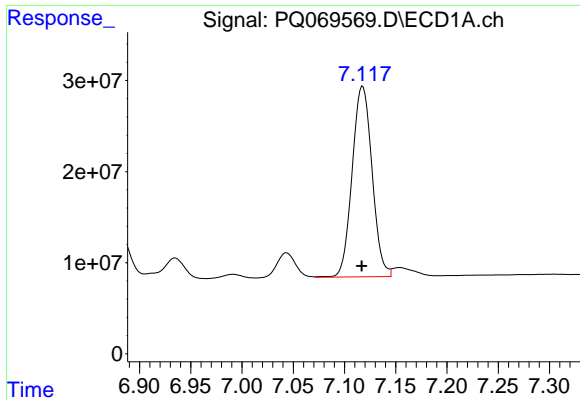
#34 AR-1260-4

R.T.: 6.806 min
 Delta R.T.: 0.000 min
 Response: 138534937
 Conc: 444.38 ng/ml



#34 AR-1260-4

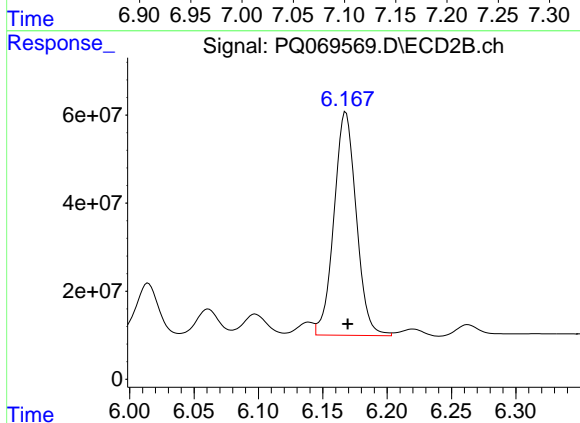
R.T.: 5.921 min
 Delta R.T.: -0.002 min
 Response: 260969269
 Conc: 454.68 ng/ml



#35 AR-1260-5

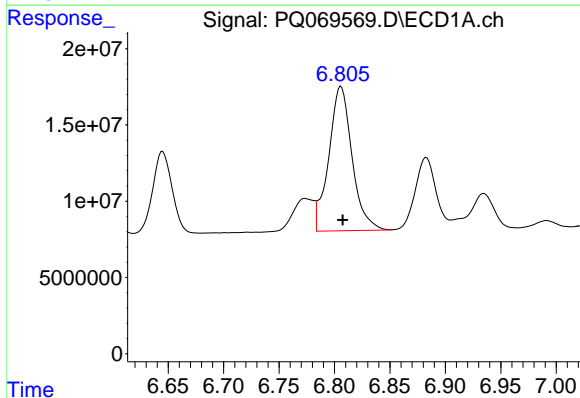
R.T.: 7.118 min
Delta R.T.: 0.000 min
Response: 283095262
Conc: 436.64 ng/ml

Instrument :
ECD_Q
ClientSampleId :



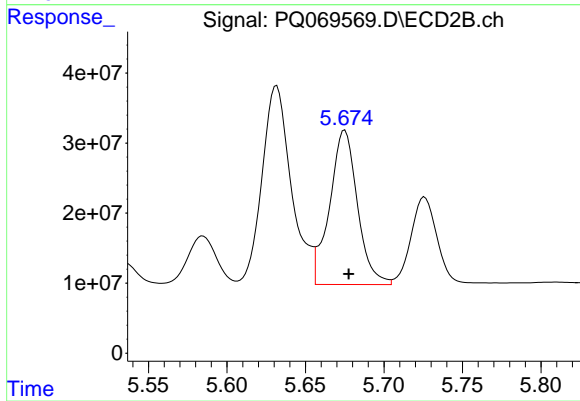
#35 AR-1260-5

R.T.: 6.168 min
Delta R.T.: -0.002 min
Response: 611878334
Conc: 451.08 ng/ml



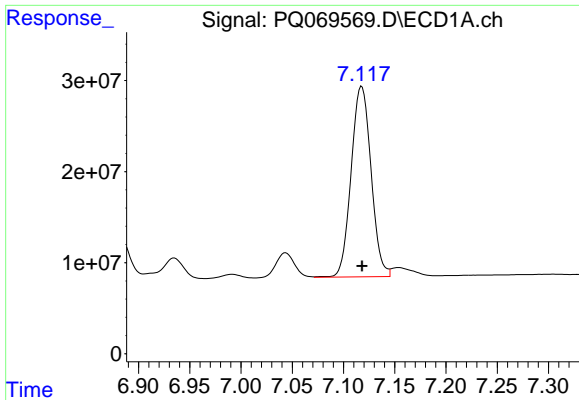
#36 AR-1262-1

R.T.: 6.806 min
Delta R.T.: -0.001 min
Response: 138534937
Conc: 370.46 ng/ml



#36 AR-1262-1

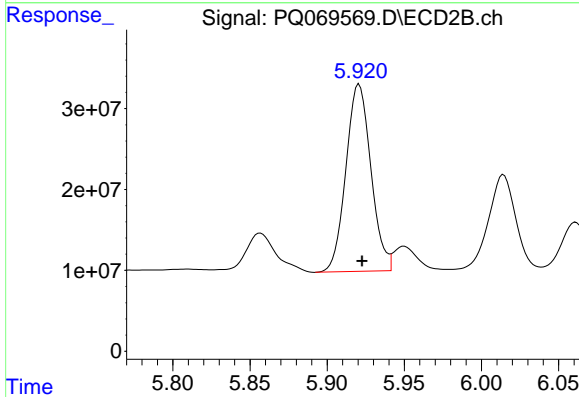
R.T.: 5.675 min
Delta R.T.: -0.002 min
Response: 272080936
Conc: 304.92 ng/ml



#37 AR-1262-2

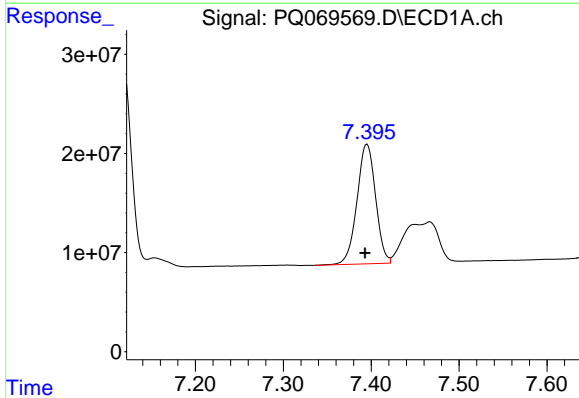
R.T.: 7.118 min
 Delta R.T.: 0.000 min
 Response: 283095262
 Conc: 395.90 ng/ml

Instrument :
 ECD_Q
 ClientSampleId :



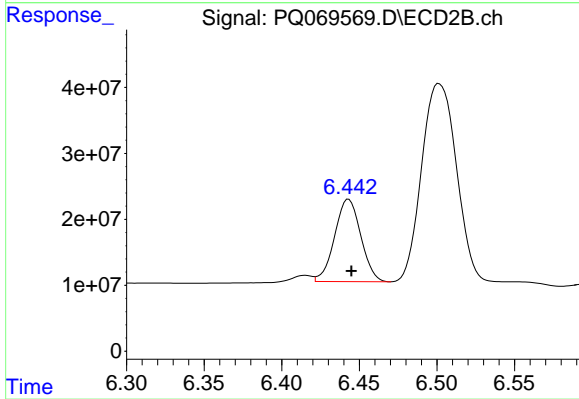
#37 AR-1262-2

R.T.: 5.921 min
 Delta R.T.: -0.002 min
 Response: 260969269
 Conc: 314.66 ng/ml



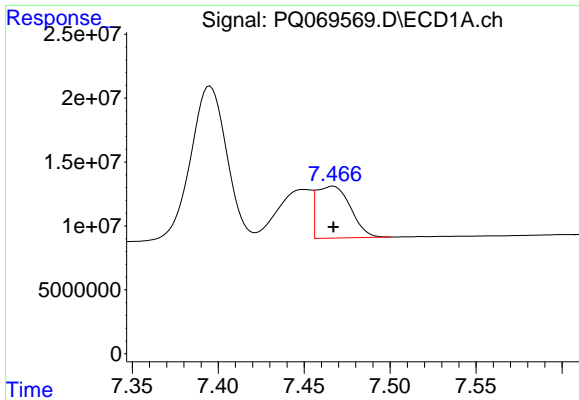
#38 AR-1262-3

R.T.: 7.395 min
 Delta R.T.: 0.002 min
 Response: 177385297
 Conc: 384.26 ng/ml



#38 AR-1262-3

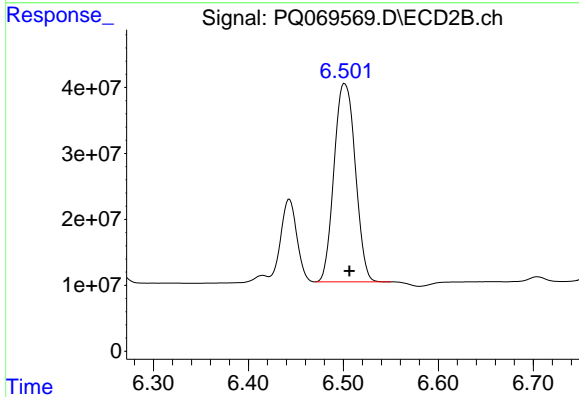
R.T.: 6.443 min
 Delta R.T.: -0.002 min
 Response: 147002811
 Conc: 219.71 ng/ml



#39 AR-1262-4

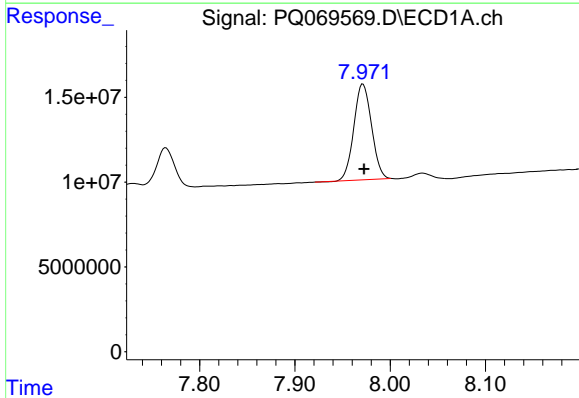
R.T.: 7.467 min
 Delta R.T.: 0.000 min
 Response: 55606862
 Conc: 163.07 ng/ml

Instrument :
 ECD_Q
 ClientSampleId :



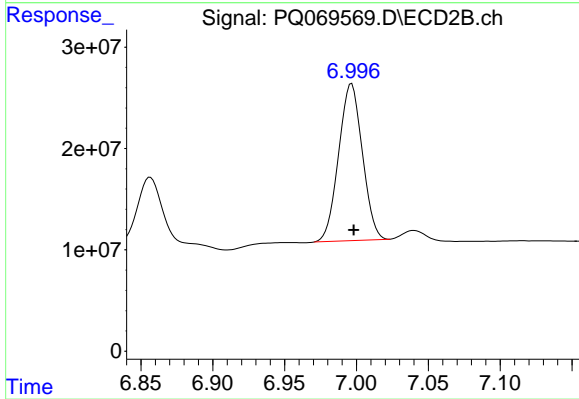
#39 AR-1262-4

R.T.: 6.501 min
 Delta R.T.: -0.005 min
 Response: 468302702
 Conc: 374.00 ng/ml



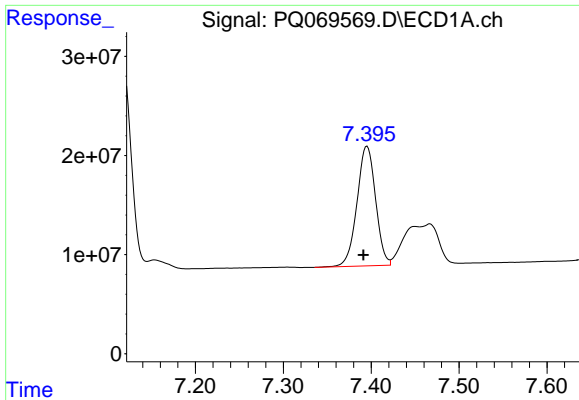
#40 AR-1262-5

R.T.: 7.971 min
 Delta R.T.: -0.001 min
 Response: 73052399
 Conc: 322.89 ng/ml



#40 AR-1262-5

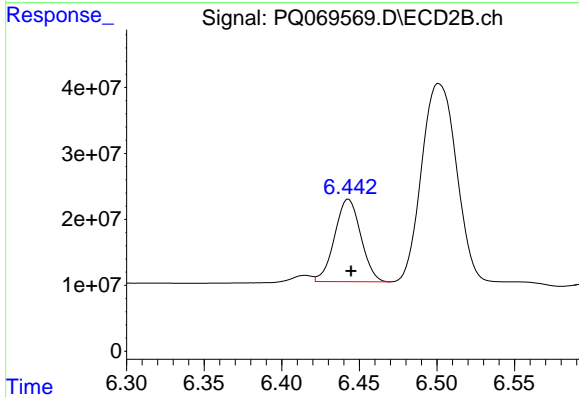
R.T.: 6.997 min
 Delta R.T.: -0.002 min
 Response: 177452591
 Conc: 298.88 ng/ml



#41 AR-1268-1

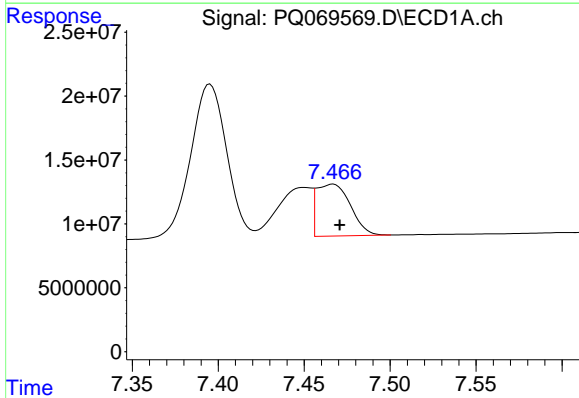
R.T.: 7.395 min
 Delta R.T.: 0.004 min
 Response: 177385297
 Conc: 234.67 ng/ml

Instrument :
 ECD_Q
 ClientSampleId :



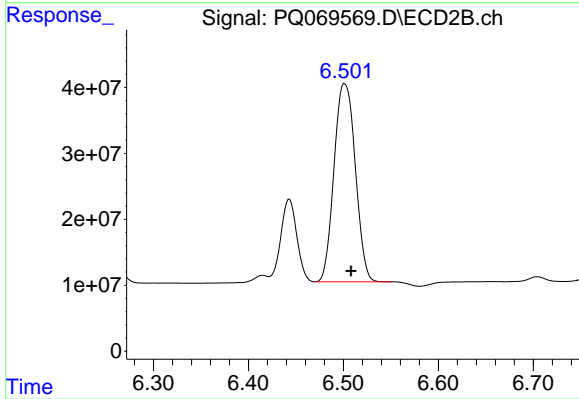
#41 AR-1268-1

R.T.: 6.443 min
 Delta R.T.: -0.002 min
 Response: 147002811
 Conc: 78.82 ng/ml



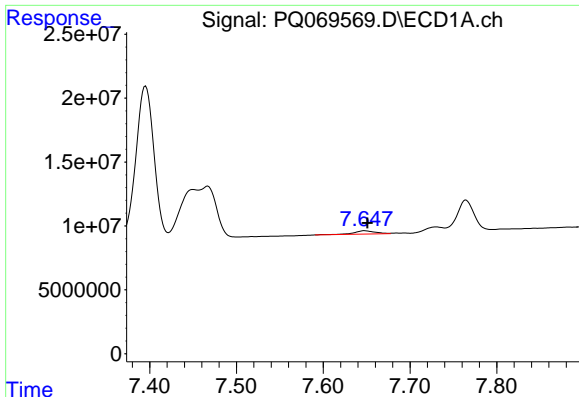
#42 AR-1268-2

R.T.: 7.467 min
 Delta R.T.: -0.004 min
 Response: 55606862
 Conc: 80.86 ng/ml



#42 AR-1268-2

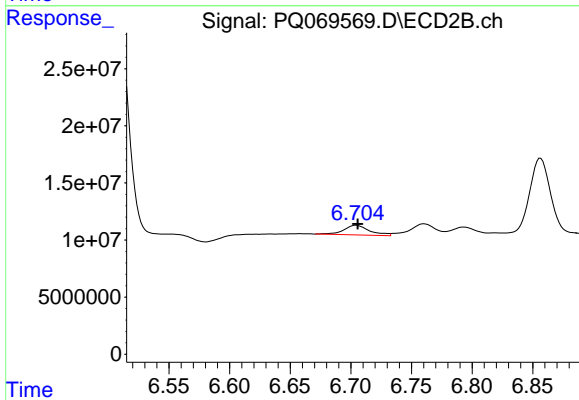
R.T.: 6.501 min
 Delta R.T.: -0.007 min
 Response: 468302702
 Conc: 265.36 ng/ml



#43 AR-1268-3

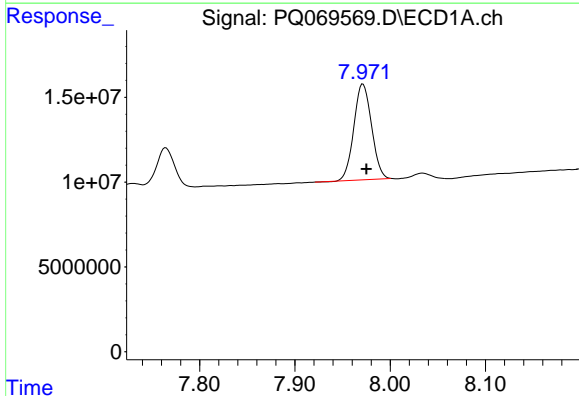
R.T.: 7.648 min
 Delta R.T.: -0.003 min
 Response: 4404286
 Conc: 7.76 ng/ml

Instrument :
 ECD_Q
 ClientSampleId :



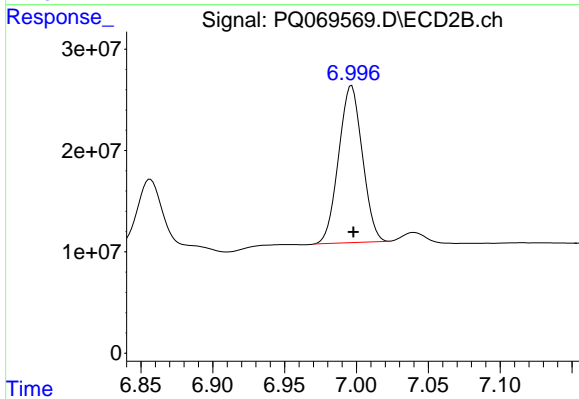
#43 AR-1268-3

R.T.: 6.704 min
 Delta R.T.: -0.001 min
 Response: 12471070
 Conc: 8.26 ng/ml



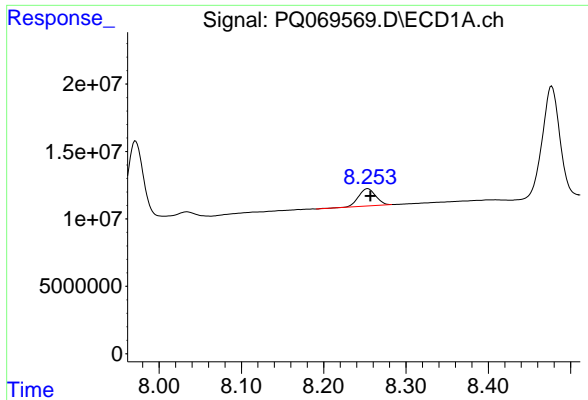
#44 AR-1268-4

R.T.: 7.971 min
 Delta R.T.: -0.003 min
 Response: 73052399
 Conc: 306.92 ng/ml



#44 AR-1268-4

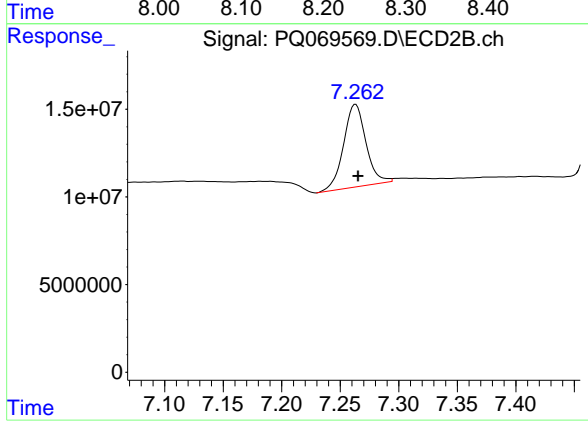
R.T.: 6.997 min
 Delta R.T.: -0.001 min
 Response: 177452591
 Conc: 276.04 ng/ml



#45 AR-1268-5

R.T.: 8.254 min
Delta R.T.: -0.003 min
Response: 18550625
Conc: 10.35 ng/ml

Instrument :
ECD_Q
ClientSampleId :



#45 AR-1268-5

R.T.: 7.263 min
Delta R.T.: -0.002 min
Response: 62632751
Conc: 12.98 ng/ml