

Data Path : Z:\pestpcbsrv\HPCHEM1\ECD\_Q\Data\PQ112619\  
 Data File : PQ045483.D  
 Signal(s) : Signal #1: ECD1A.ch Signal #2: ECD2B.ch  
 Acq On : 27 Nov 2019 07:16  
 Operator : SM\AJ  
 Sample : K6007-13  
 Misc :  
 ALS Vial : 56 Sample Multiplier: 1

Instrument :  
 ECD\_Q  
 ClientSampled :

Integration File signal 1: autoint1.e  
 Integration File signal 2: autoint2.e  
 Quant Time: Nov 27 08:10:19 2019  
 Quant Method : Z:\pestpcbsrv\HPCHEM1\ECD\_Q\Method\PQ112519CLP.M  
 Quant Title : GC EXTRACTABLES  
 QLast Update : Tue Nov 26 06:05:49 2019  
 Response via : Initial Calibration  
 Integrator: ChemStation

Volume Inj. : 1 µl  
 Signal #1 Phase : ZB MR1 Signal #2 Phase: ZB MR2  
 Signal #1 Info : 30Mx0.32mmx 0.5µm Signal #2 Info : 30M x 0.32mm x 0.25µm

Compound	RT#1	RT#2	Resp#1	Resp#2	ng/ml	ng/ml
System Monitoring Compounds						
1) SA Tetrachlo...	5.099	4.307	62725820	36150316	19.068	21.194
2) SA Decachlor...	11.151	9.716	234.4E6	180.0E6	35.926	34.397
Target Compounds						
3) L1 AR-1016-1	6.433	5.536	3928696	122317	31.918	1.758 #
4) L1 AR-1016-2	6.433	5.536	3928696	122317	20.129	1.153 #
5) L1 AR-1016-3	6.494	0.000	1071542	0	8.827	N.D. #
6) L1 AR-1016-4	6.606	5.905	2661312	1866271	27.536	39.924 #
7) L1 AR-1016-5	6.918	6.073	1578806	840416	15.541	13.252
8) L2 AR-1221-1	5.316	4.635	1897327	949864	53.376	45.447
9) L2 AR-1221-2	5.451	4.635	3448182	949864	129.953	73.995 #
10) L2 AR-1221-3	5.541	0.000	976807	0	10.818	N.D. #
11) L3 AR-1232-1	5.541	0.000	976807	0	15.370	N.D. #
12) L3 AR-1232-2	6.117	5.536	6502513	122317	162.558	2.756 #
13) L3 AR-1232-3	6.433	0.000	3928696	0	48.775	N.D. #
14) L3 AR-1232-4	6.606	5.905	2661312	1866271	67.332	82.704
15) L3 AR-1232-5	6.707	6.073	2749389	840416	82.351	34.607 #
16) L4 AR-1242-1	6.433	5.536	3928696	122317	37.992	2.074 #
17) L4 AR-1242-2	6.433	5.536	3928696	122317	24.085	1.395 #
18) L4 AR-1242-3	6.494	0.000	1071542	0	10.477	N.D. #
19) L4 AR-1242-4	6.606	5.905	2661312	1866271	33.105	38.449
20) L4 AR-1242-5	7.389	6.465	7897327	5068421	84.155	73.036
21) L5 AR-1248-1	6.433	5.536	3928696	122317	48.486	2.643 #
22) L5 AR-1248-2	6.707	5.905	2749389	1866271	21.634	27.687 #
23) L5 AR-1248-3	6.918	5.905	1578806	1866271	11.337	26.281 #
24) L5 AR-1248-4	7.352	6.073	4362268	840416	26.866	9.663 #
25) L5 AR-1248-5	7.389	6.520	7897327	1589709	50.415	16.815 #
26) L6 AR-1254-1	7.316	6.465	10253373	5068421	62.325	34.925 #
27) L6 AR-1254-2	7.545	6.622	26980583	6426038	102.936	48.031 #
28) L6 AR-1254-3	7.931	7.063	12392057	19563728	43.344	81.616 #
29) L6 AR-1254-4	8.220	7.288	16789400	6873046	77.483	41.163 #
30) L6 AR-1254-5	8.649	7.721	57629222	39116733	234.193	151.803 #
31) L7 AR-1260-1	8.094	7.185	39662492	26947955	185.651	176.048
32) L7 AR-1260-2	8.358	7.381	46324882	34713067	190.104	173.773
33) L7 AR-1260-3	8.725	7.542	31376582	25042992	158.278	136.113
34) L7 AR-1260-4	8.958	8.027	35724825	24897883	156.266	137.231
35) L7 AR-1260-5	9.290	8.274	67998169	66454427	130.669	129.889
36) L8 AR-1262-1	8.784	7.721	17209326	39116733	124.461	268.147 #
37) L8 AR-1262-2	9.290	8.274	67998169	66454427	104.900	102.139
38) L8 AR-1262-3	9.629	8.562	45576880	17590617	99.616	66.033 #
39) L8 AR-1262-4	9.684	8.628	26810444	45495578	73.537	86.907
40) L8 AR-1262-5	10.381	9.141	18002090	17165318	63.161	62.416
41) L9 AR-1268-1	9.629	8.562	45576880	17590617	53.937	21.904 #

Data Path : Z:\pestpcbsrv\HPCHEM1\ECD\_Q\Data\PQ112619\  
 Data File : PQ045483.D  
 Signal(s) : Signal #1: ECD1A.ch Signal #2: ECD2B.ch  
 Acq On : 27 Nov 2019 07:16  
 Operator : SM\AJ  
 Sample : K6007-13  
 Misc :  
 ALS Vial : 56 Sample Multiplier: 1

Instrument :  
 ECD\_Q  
 ClientSampleId :

Integration File signal 1: autoint1.e  
 Integration File signal 2: autoint2.e  
 Quant Time: Nov 27 08:10:19 2019  
 Quant Method : Z:\pestpcbsrv\HPCHEM1\ECD\_Q\Method\PQ112519CLP.M  
 Quant Title : GC EXTRACTABLES  
 QLast Update : Tue Nov 26 06:05:49 2019  
 Response via : Initial Calibration  
 Integrator: ChemStation

Volume Inj. : 1 µl  
 Signal #1 Phase : ZB MR1 Signal #2 Phase: ZB MR2  
 Signal #1 Info : 30Mx0.32mmx 0.5µm Signal #2 Info : 30M x 0.32mm x 0.25µm

	Compound	RT#1	RT#2	Resp#1	Resp#2	ng/ml	ng/ml
42)	L9 AR-1268-2	9.684	8.628	26810444	45495578	32.412	59.815 #
43)	L9 AR-1268-3	9.940	8.837	4071039	4205959	5.799	6.731
44)	L9 AR-1268-4	10.381	9.141	18002090	17165318	54.762	53.937
45)	L9 AR-1268-5	10.805	9.448	14882213	11859469	5.527	4.914

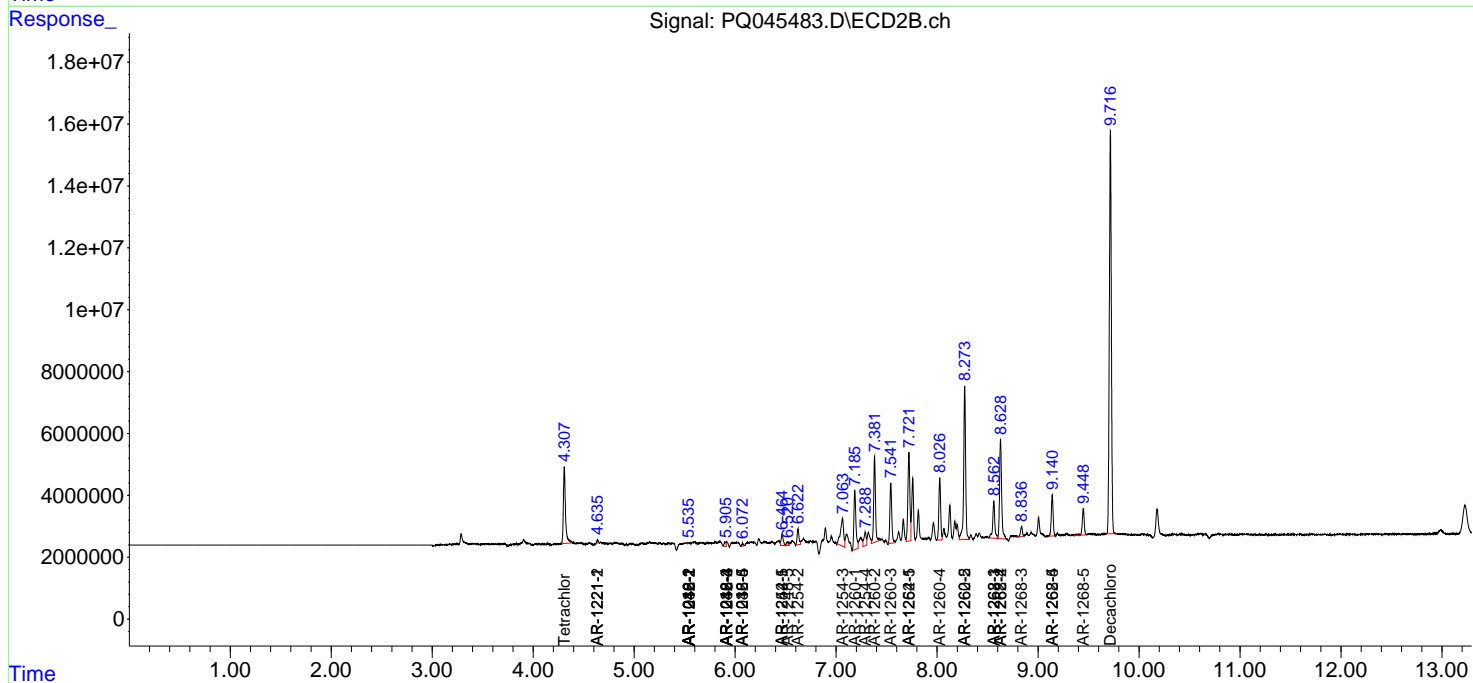
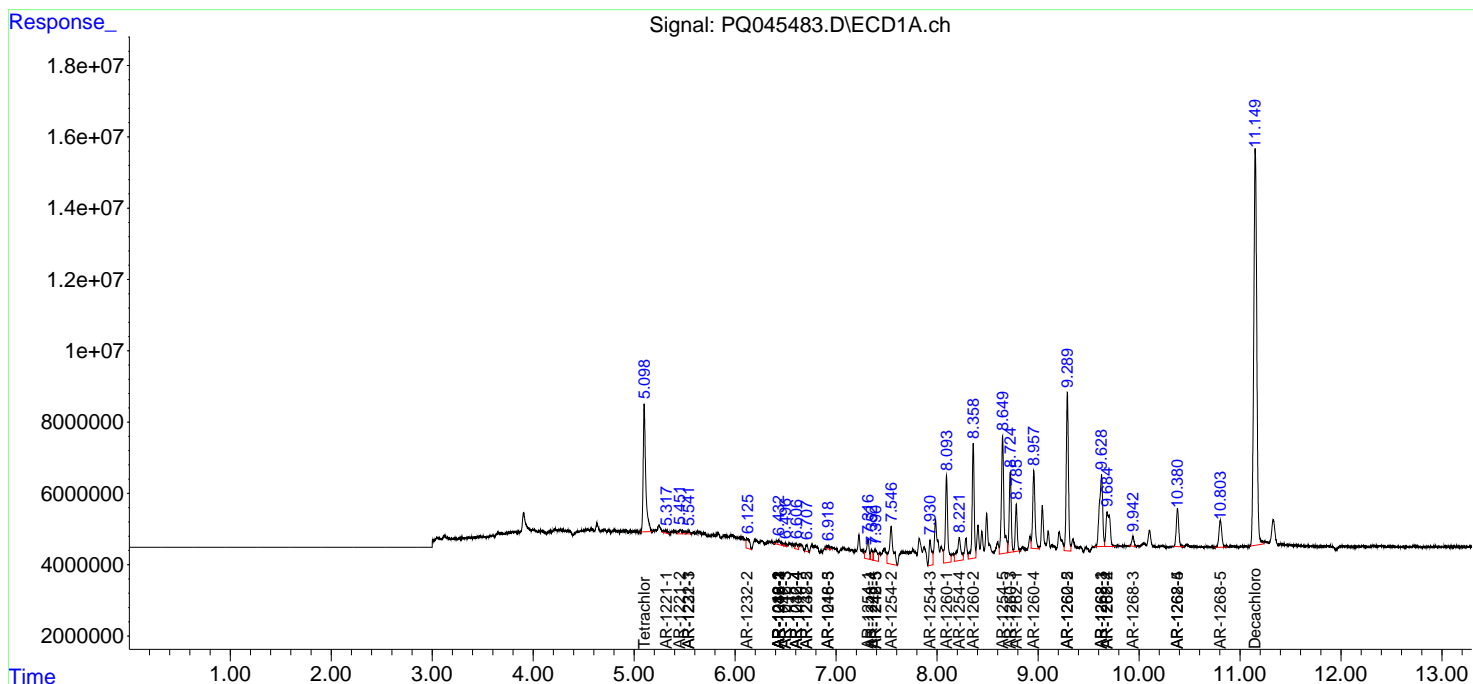
(f)=RT Delta > 1/2 Window (#)=Amounts differ by > 25% (m)=manual int.

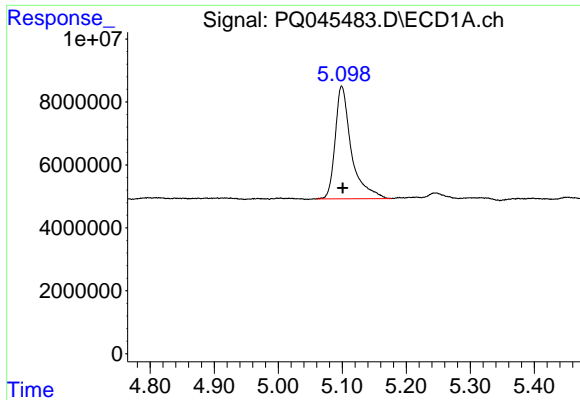
Data Path : Z:\pestpcbsrv\HPCHEM1\ECD\_Q\Data\PQ112619\  
 Data File : PQ045483.D  
 Signal(s) : Signal #1: ECD1A.ch Signal #2: ECD2B.ch  
 Acq On : 27 Nov 2019 07:16  
 Operator : SM\AJ  
 Sample : K6007-13  
 Misc :  
 ALS Vial : 56 Sample Multiplier: 1

Instrument :  
 ECD\_Q  
 ClientSampled :

Integration File signal 1: autoint1.e  
 Integration File signal 2: autoint2.e  
 Quant Time: Nov 27 08:10:19 2019  
 Quant Method : Z:\pestpcbsrv\HPCHEM1\ECD\_Q\Method\PQ112519CLP.M  
 Quant Title : GC EXTRACTABLES  
 QLast Update : Tue Nov 26 06:05:49 2019  
 Response via : Initial Calibration  
 Integrator: ChemStation

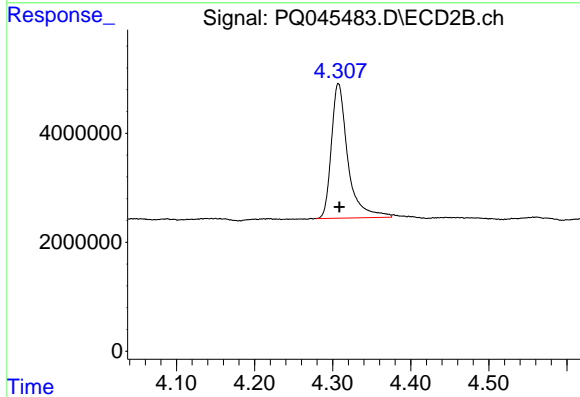
Volume Inj. : 1 µl  
 Signal #1 Phase : ZB MR1 Signal #2 Phase: ZB MR2  
 Signal #1 Info : 30Mx0.32mmx 0.5µm Signal #2 Info : 30M x 0.32mm x 0.25µm



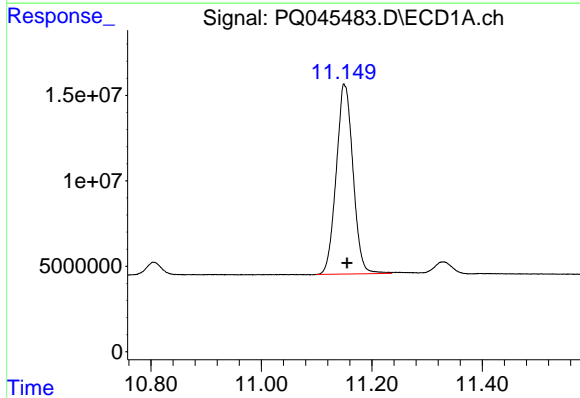


#1 Tetrachloro-m-xylene  
 R.T.: 5.099 min  
 Delta R.T.: -0.002 min  
 Response: 62725820  
 Conc: 19.07 ng/ml

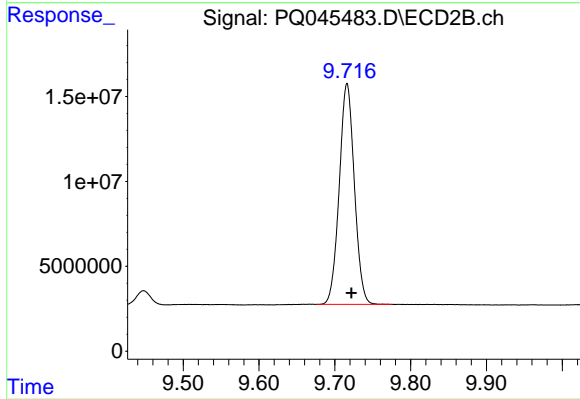
Instrument :  
 ECD\_Q  
 ClientSampleId :



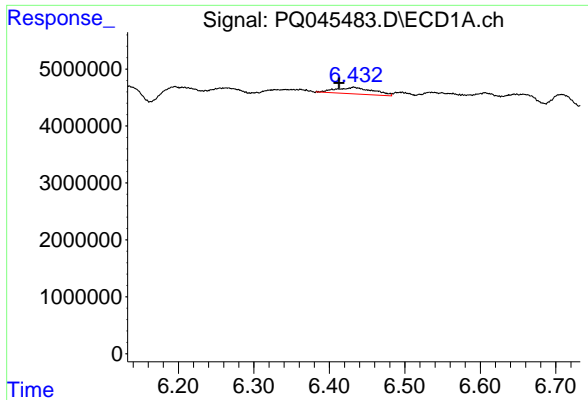
#1 Tetrachloro-m-xylene  
 R.T.: 4.307 min  
 Delta R.T.: -0.001 min  
 Response: 36150316  
 Conc: 21.19 ng/ml



#2 Decachlorobiphenyl  
 R.T.: 11.151 min  
 Delta R.T.: -0.005 min  
 Response: 234427925  
 Conc: 35.93 ng/ml

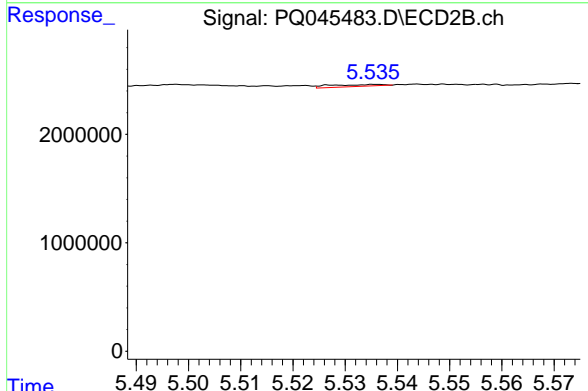


#2 Decachlorobiphenyl  
 R.T.: 9.716 min  
 Delta R.T.: -0.006 min  
 Response: 179970940  
 Conc: 34.40 ng/ml

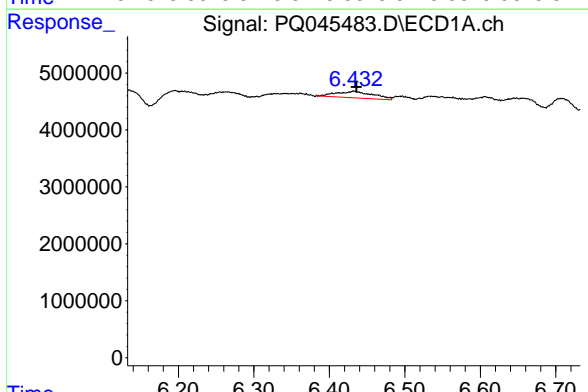


#3 AR-1016-1  
 R.T.: 6.433 min  
 Delta R.T.: 0.020 min  
 Response: 3928696  
 Conc: 31.92 ng/ml

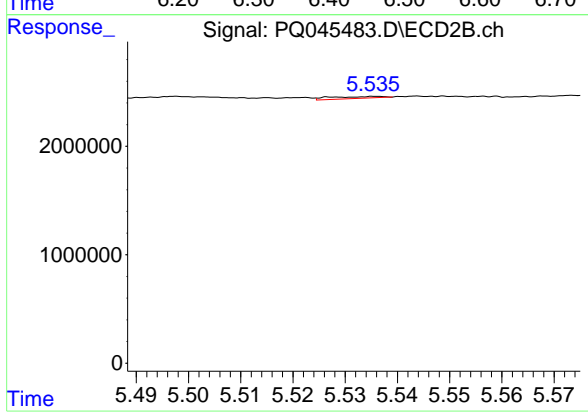
Instrument :  
 ECD\_Q  
 ClientSampleId :



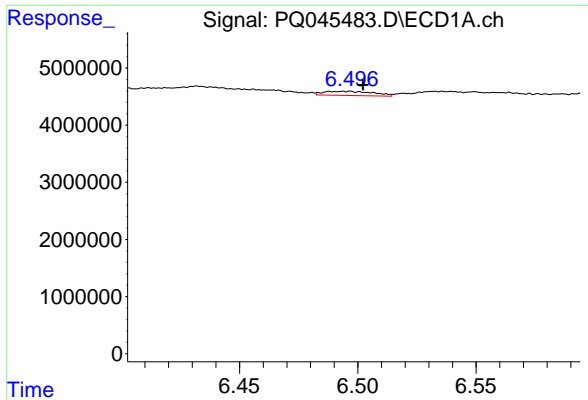
#3 AR-1016-1  
 R.T.: 5.536 min  
 Delta R.T.: -0.050 min  
 Response: 122317  
 Conc: 1.76 ng/ml



#4 AR-1016-2  
 R.T.: 6.433 min  
 Delta R.T.: -0.003 min  
 Response: 3928696  
 Conc: 20.13 ng/ml

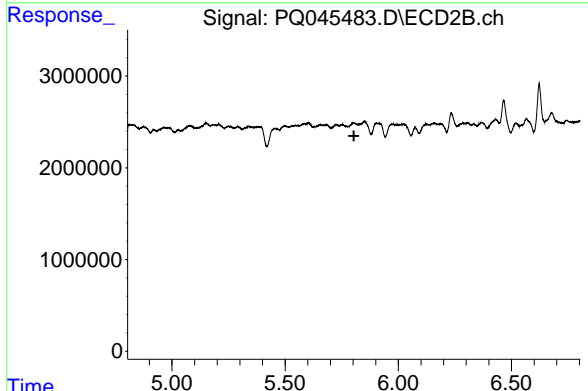


#4 AR-1016-2  
 R.T.: 5.536 min  
 Delta R.T.: -0.070 min  
 Response: 122317  
 Conc: 1.15 ng/ml

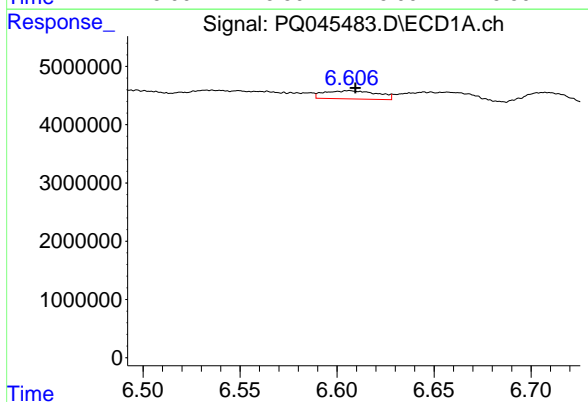


#5 AR-1016-3  
 R.T.: 6.494 min  
 Delta R.T.: -0.008 min  
 Response: 1071542  
 Conc: 8.83 ng/ml

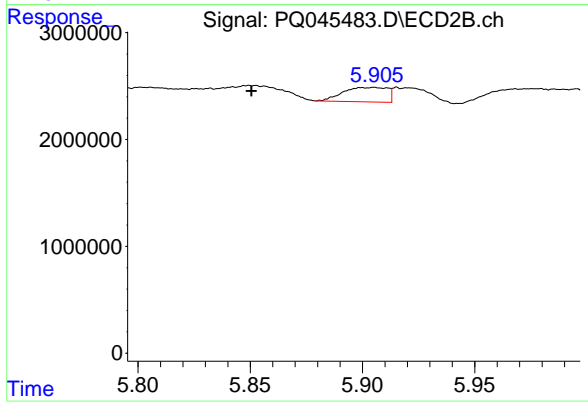
Instrument :  
 ECD\_Q  
 ClientSampled :



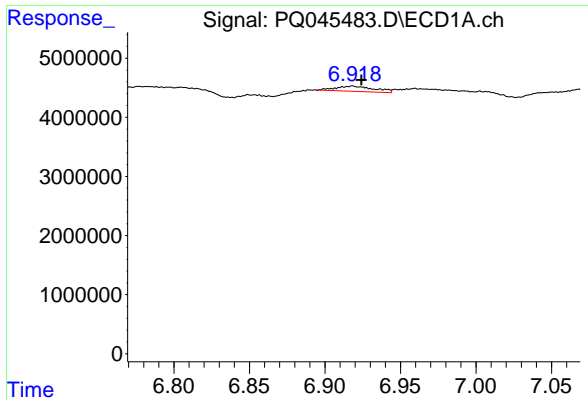
#5 AR-1016-3  
 R.T.: 0.000 min  
 Exp R.T. : 5.804 min  
 Response: 0  
 Conc: N.D.



#6 AR-1016-4  
 R.T.: 6.606 min  
 Delta R.T.: -0.003 min  
 Response: 2661312  
 Conc: 27.54 ng/ml



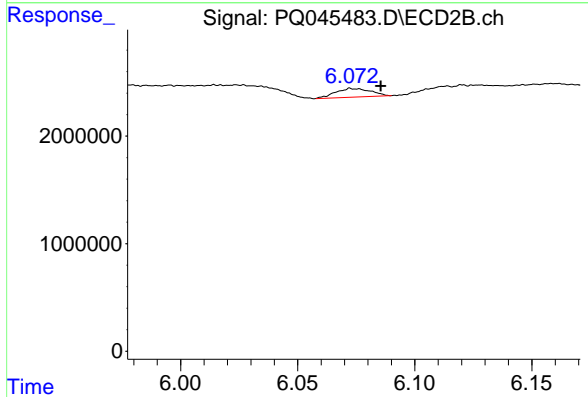
#6 AR-1016-4  
 R.T.: 5.905 min  
 Delta R.T.: 0.055 min  
 Response: 1866271  
 Conc: 39.92 ng/ml



#7 AR-1016-5

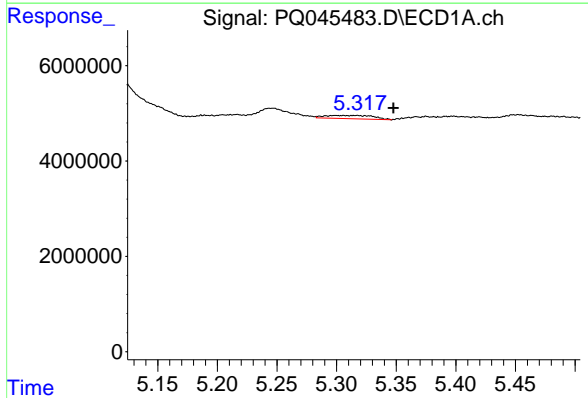
R.T.: 6.918 min  
 Delta R.T.: -0.006 min  
 Response: 1578806  
 Conc: 15.54 ng/ml

Instrument :  
 ECD\_Q  
 ClientSampleId :



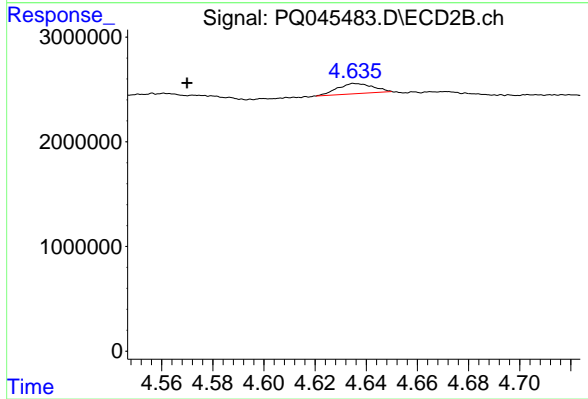
#7 AR-1016-5

R.T.: 6.073 min  
 Delta R.T.: -0.013 min  
 Response: 840416  
 Conc: 13.25 ng/ml



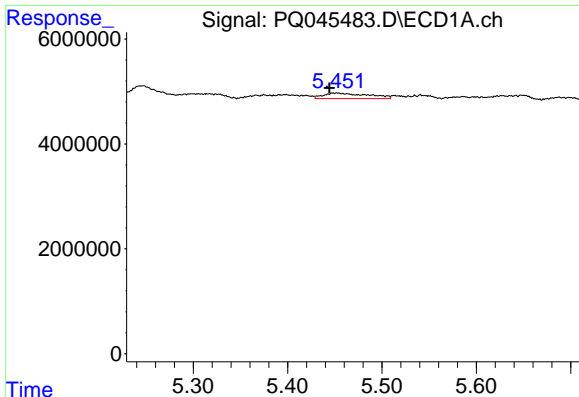
#8 AR-1221-1

R.T.: 5.316 min  
 Delta R.T.: -0.032 min  
 Response: 1897327  
 Conc: 53.38 ng/ml



#8 AR-1221-1

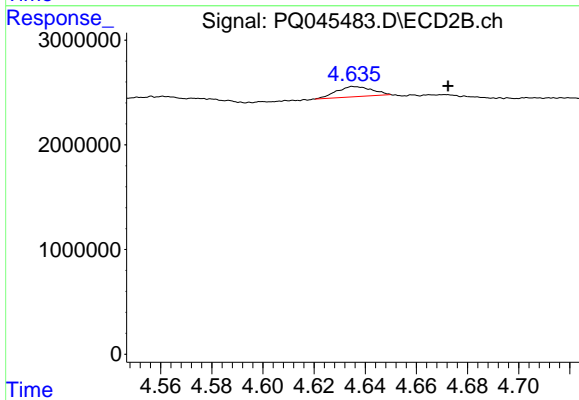
R.T.: 4.635 min  
 Delta R.T.: 0.066 min  
 Response: 949864  
 Conc: 45.45 ng/ml



#9 AR-1221-2

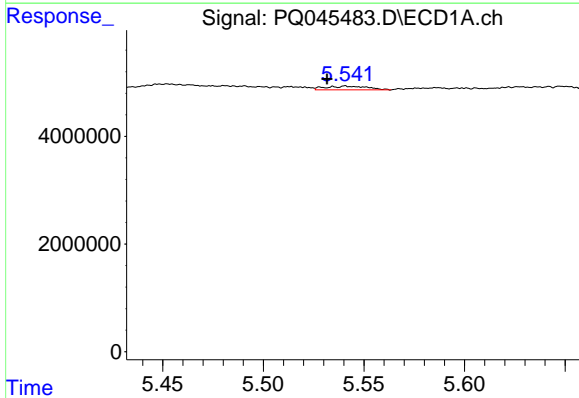
R.T.: 5.451 min  
 Delta R.T.: 0.007 min  
 Response: 3448182  
 Conc: 129.95 ng/ml

Instrument :  
 ECD\_Q  
 ClientSampleId :



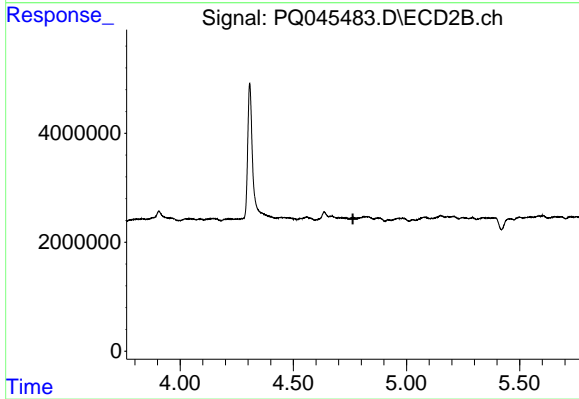
#9 AR-1221-2

R.T.: 4.635 min  
 Delta R.T.: -0.037 min  
 Response: 949864  
 Conc: 73.99 ng/ml



#10 AR-1221-3

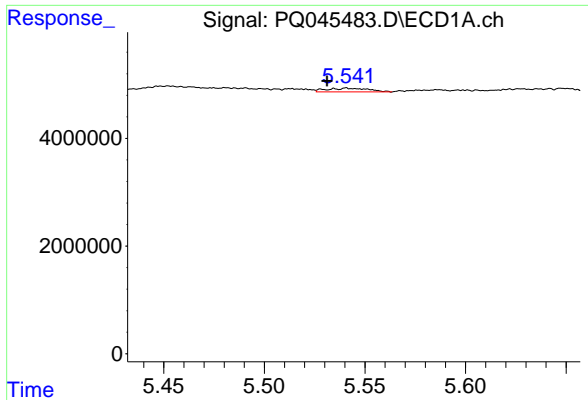
R.T.: 5.541 min  
 Delta R.T.: 0.010 min  
 Response: 976807  
 Conc: 10.82 ng/ml



#10 AR-1221-3

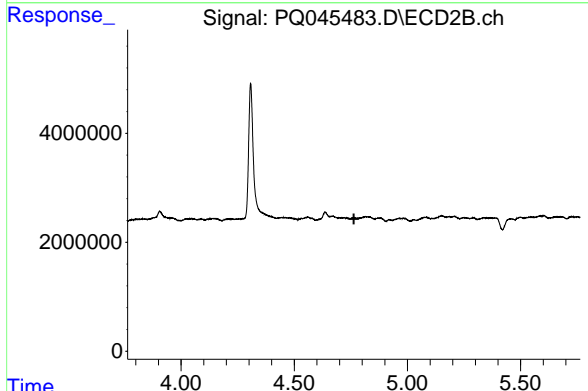
R.T.: 0.000 min  
 Exp R.T. : 4.763 min  
 Response: 0  
 Conc: N.D.



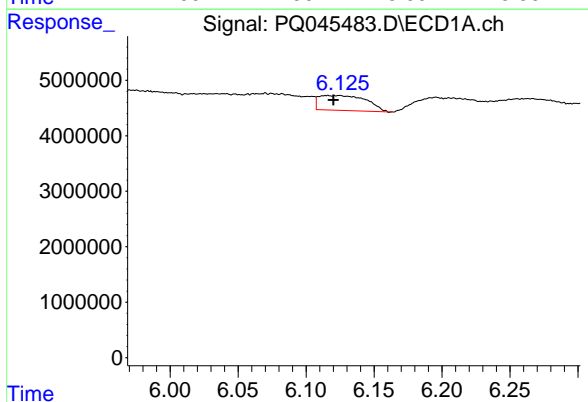


#11 AR-1232-1  
 R.T.: 5.541 min  
 Delta R.T.: 0.010 min  
 Response: 976807  
 Conc: 15.37 ng/ml

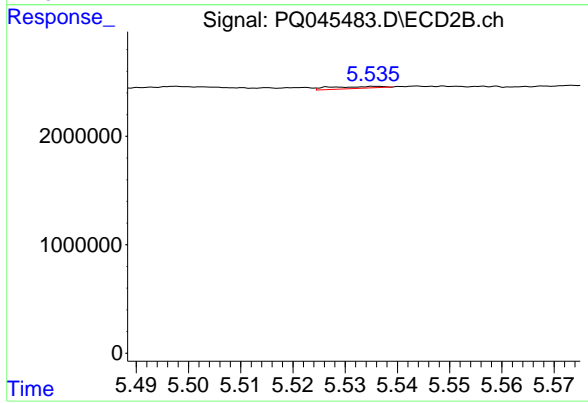
Instrument :  
 ECD\_Q  
 ClientSampleId :



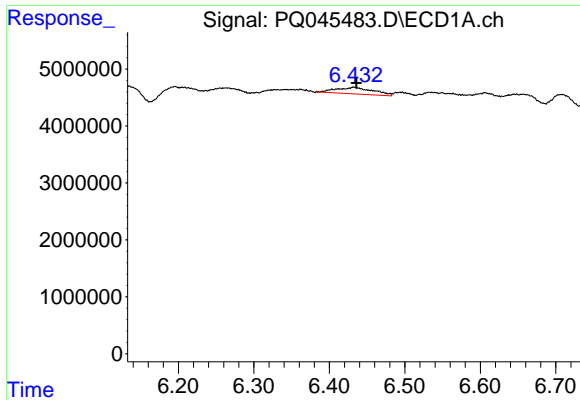
#11 AR-1232-1  
 R.T.: 0.000 min  
 Exp R.T. : 4.763 min  
 Response: 0  
 Conc: N.D.



#12 AR-1232-2  
 R.T.: 6.117 min  
 Delta R.T.: -0.004 min  
 Response: 6502513  
 Conc: 162.56 ng/ml

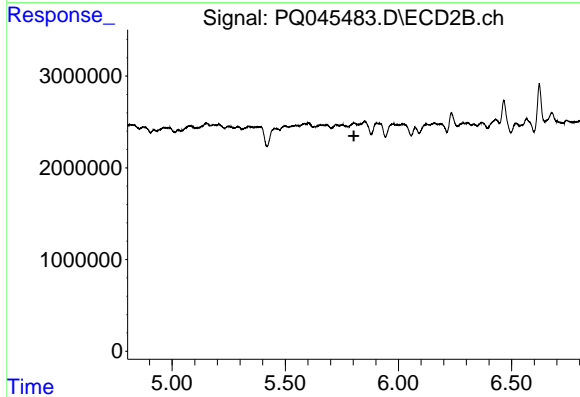


#12 AR-1232-2  
 R.T.: 5.536 min  
 Delta R.T.: -0.070 min  
 Response: 122317  
 Conc: 2.76 ng/ml

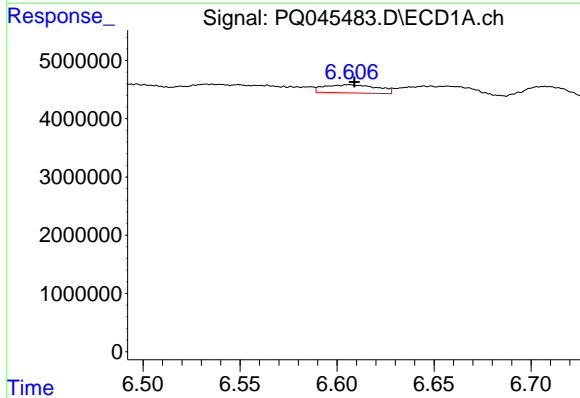


#13 AR-1232-3  
 R.T.: 6.433 min  
 Delta R.T.: -0.003 min  
 Response: 3928696  
 Conc: 48.78 ng/ml

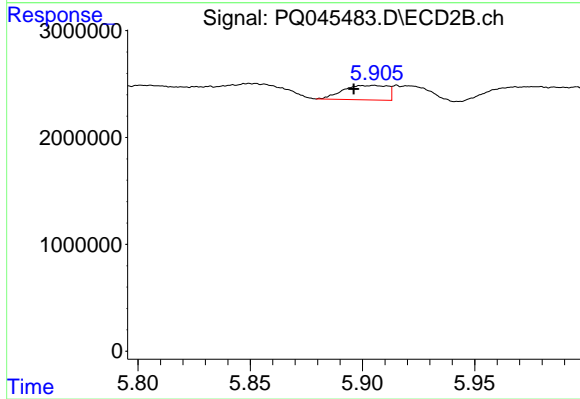
Instrument :  
 ECD\_Q  
 ClientSampled :



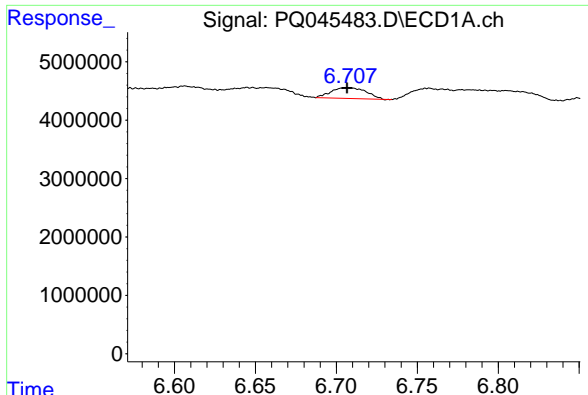
#13 AR-1232-3  
 R.T.: 0.000 min  
 Exp R.T. : 5.803 min  
 Response: 0  
 Conc: N.D.



#14 AR-1232-4  
 R.T.: 6.606 min  
 Delta R.T.: -0.003 min  
 Response: 2661312  
 Conc: 67.33 ng/ml



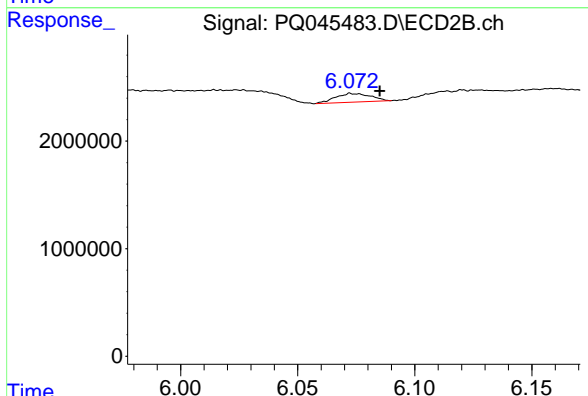
#14 AR-1232-4  
 R.T.: 5.905 min  
 Delta R.T.: 0.009 min  
 Response: 1866271  
 Conc: 82.70 ng/ml



#15 AR-1232-5

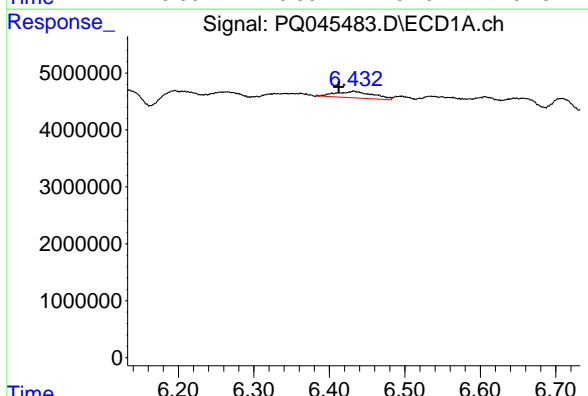
R.T.: 6.707 min  
 Delta R.T.: 0.000 min  
 Response: 2749389  
 Conc: 82.35 ng/ml

Instrument :  
 ECD\_Q  
 ClientSampleId :



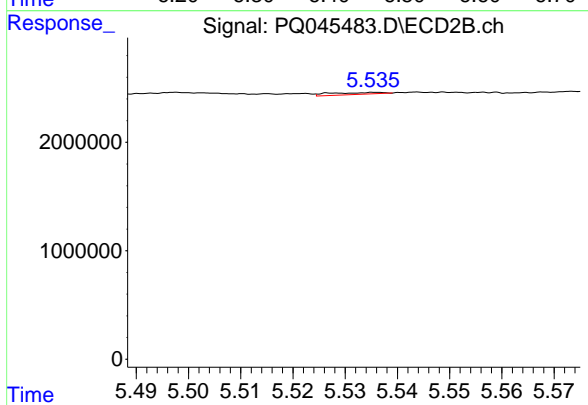
#15 AR-1232-5

R.T.: 6.073 min  
 Delta R.T.: -0.012 min  
 Response: 840416  
 Conc: 34.61 ng/ml



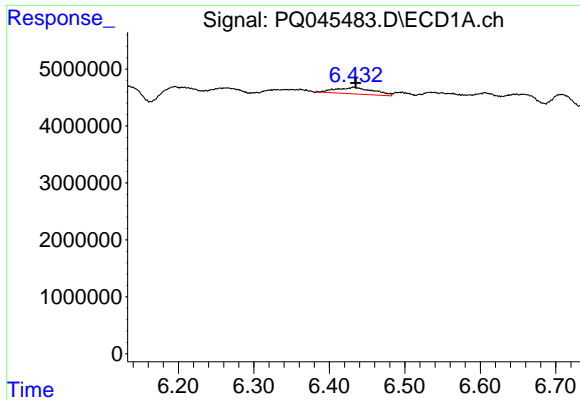
#16 AR-1242-1

R.T.: 6.433 min  
 Delta R.T.: 0.020 min  
 Response: 3928696  
 Conc: 37.99 ng/ml



#16 AR-1242-1

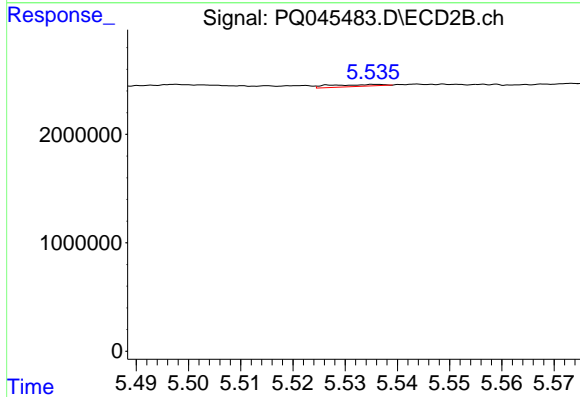
R.T.: 5.536 min  
 Delta R.T.: -0.049 min  
 Response: 122317  
 Conc: 2.07 ng/ml



#17 AR-1242-2

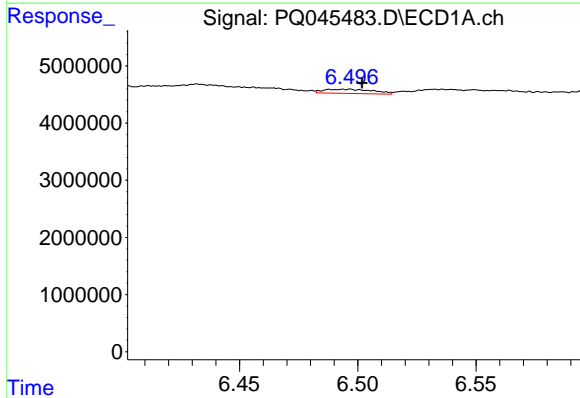
R.T.: 6.433 min  
 Delta R.T.: -0.002 min  
 Response: 3928696  
 Conc: 24.09 ng/ml

Instrument :  
 ECD\_Q  
 ClientSampleId :



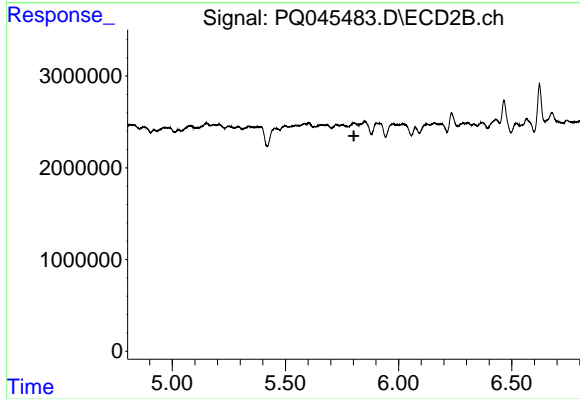
#17 AR-1242-2

R.T.: 5.536 min  
 Delta R.T.: -0.069 min  
 Response: 122317  
 Conc: 1.40 ng/ml



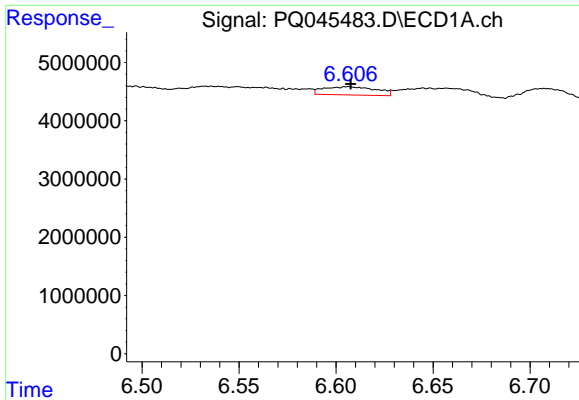
#18 AR-1242-3

R.T.: 6.494 min  
 Delta R.T.: -0.008 min  
 Response: 1071542  
 Conc: 10.48 ng/ml



#18 AR-1242-3

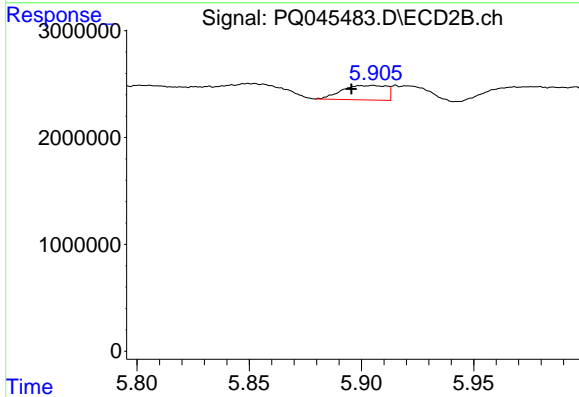
R.T.: 0.000 min  
 Exp R.T. : 5.802 min  
 Response: 0  
 Conc: N.D.



#19 AR-1242-4

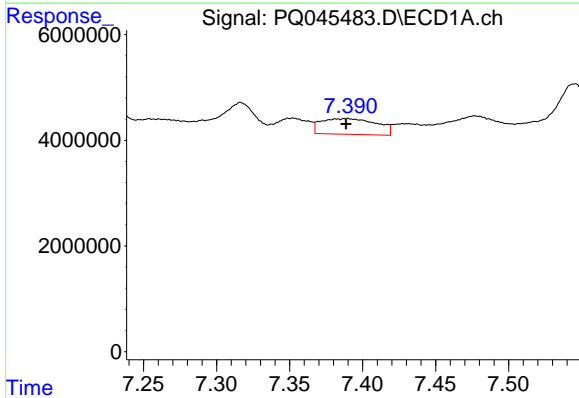
R.T.: 6.606 min  
 Delta R.T.: -0.001 min  
 Response: 2661312  
 Conc: 33.10 ng/ml

Instrument :  
 ECD\_Q  
 ClientSampleId :



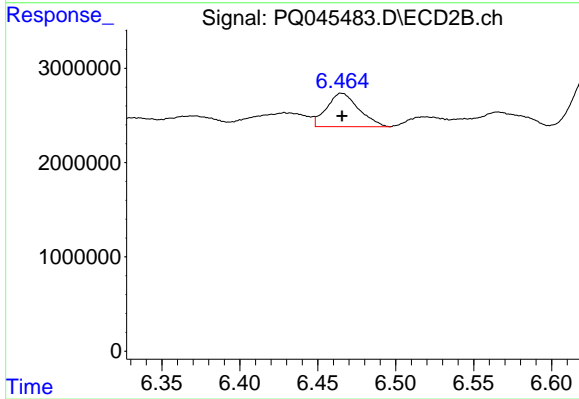
#19 AR-1242-4

R.T.: 5.905 min  
 Delta R.T.: 0.010 min  
 Response: 1866271  
 Conc: 38.45 ng/ml



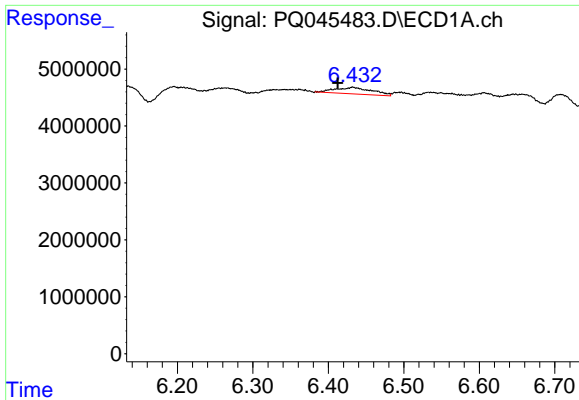
#20 AR-1242-5

R.T.: 7.389 min  
 Delta R.T.: 0.000 min  
 Response: 7897327  
 Conc: 84.15 ng/ml



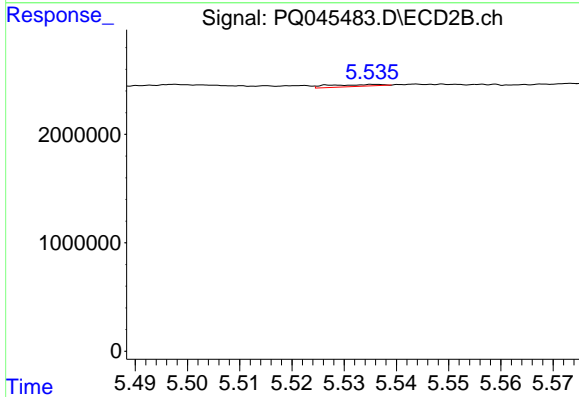
#20 AR-1242-5

R.T.: 6.465 min  
 Delta R.T.: 0.000 min  
 Response: 5068421  
 Conc: 73.04 ng/ml

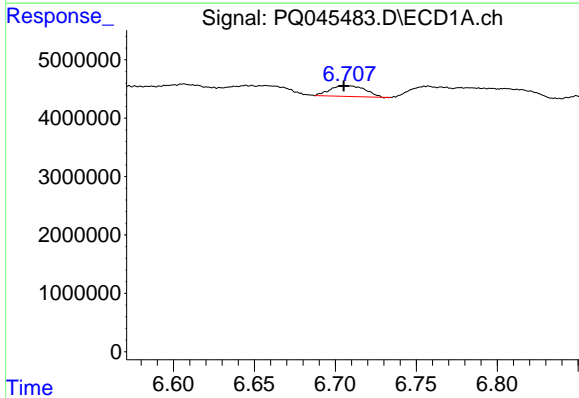


#21 AR-1248-1  
 R.T.: 6.433 min  
 Delta R.T.: 0.020 min  
 Response: 3928696  
 Conc: 48.49 ng/ml

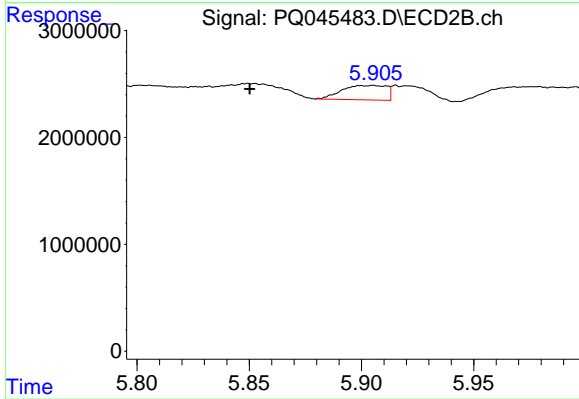
Instrument :  
 ECD\_Q  
 ClientSampled :



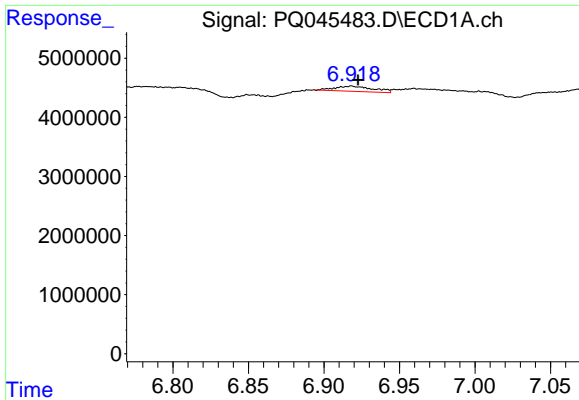
#21 AR-1248-1  
 R.T.: 5.536 min  
 Delta R.T.: -0.050 min  
 Response: 122317  
 Conc: 2.64 ng/ml



#22 AR-1248-2  
 R.T.: 6.707 min  
 Delta R.T.: 0.002 min  
 Response: 2749389  
 Conc: 21.63 ng/ml



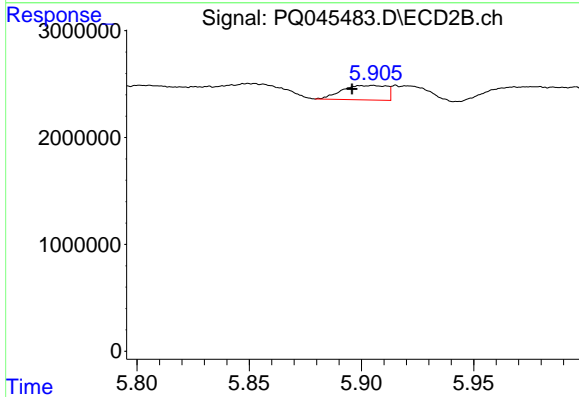
#22 AR-1248-2  
 R.T.: 5.905 min  
 Delta R.T.: 0.055 min  
 Response: 1866271  
 Conc: 27.69 ng/ml



#23 AR-1248-3

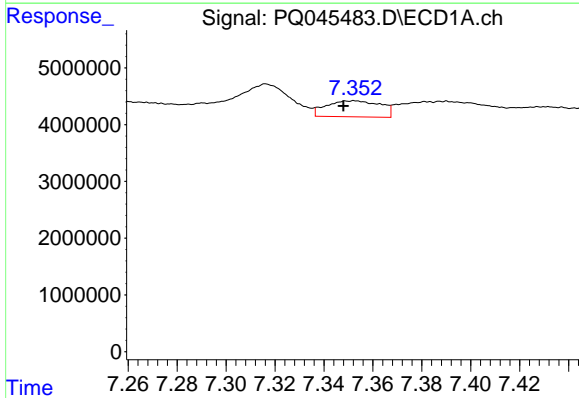
R.T.: 6.918 min  
 Delta R.T.: -0.004 min  
 Response: 1578806  
 Conc: 11.34 ng/ml

Instrument :  
 ECD\_Q  
 ClientSampleId :



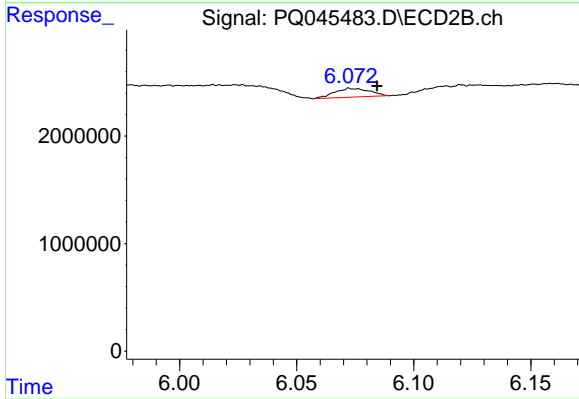
#23 AR-1248-3

R.T.: 5.905 min  
 Delta R.T.: 0.010 min  
 Response: 1866271  
 Conc: 26.28 ng/ml



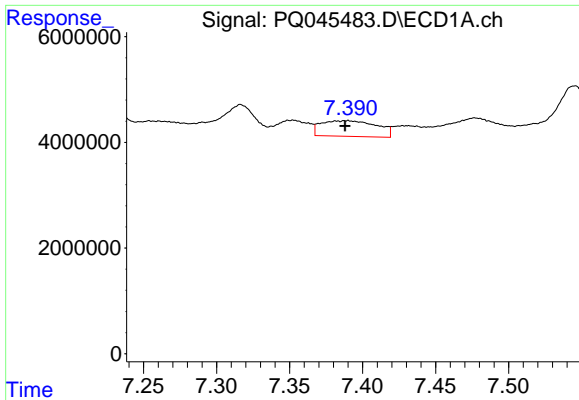
#24 AR-1248-4

R.T.: 7.352 min  
 Delta R.T.: 0.004 min  
 Response: 4362268  
 Conc: 26.87 ng/ml



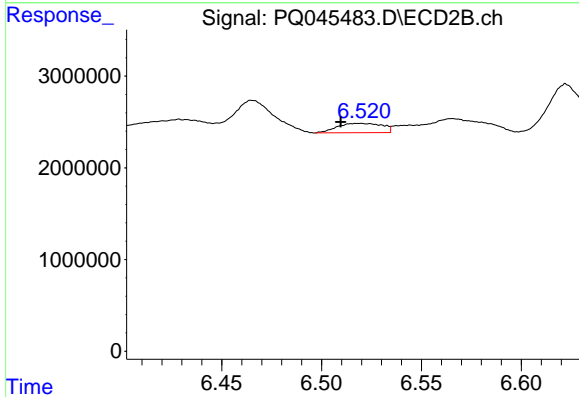
#24 AR-1248-4

R.T.: 6.073 min  
 Delta R.T.: -0.012 min  
 Response: 840416  
 Conc: 9.66 ng/ml

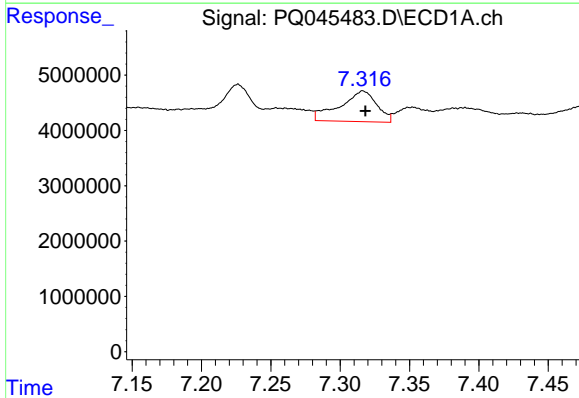


#25 AR-1248-5  
 R.T.: 7.389 min  
 Delta R.T.: 0.000 min  
 Response: 7897327  
 Conc: 50.41 ng/ml

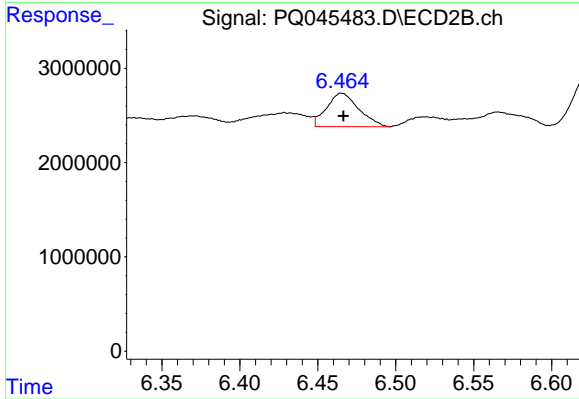
Instrument :  
 ECD\_Q  
 ClientSampled :



#25 AR-1248-5  
 R.T.: 6.520 min  
 Delta R.T.: 0.010 min  
 Response: 1589709  
 Conc: 16.82 ng/ml

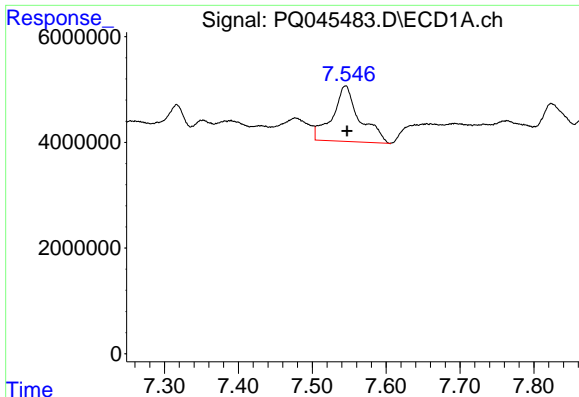


#26 AR-1254-1  
 R.T.: 7.316 min  
 Delta R.T.: -0.002 min  
 Response: 10253373  
 Conc: 62.32 ng/ml



#26 AR-1254-1  
 R.T.: 6.465 min  
 Delta R.T.: -0.001 min  
 Response: 5068421  
 Conc: 34.92 ng/ml

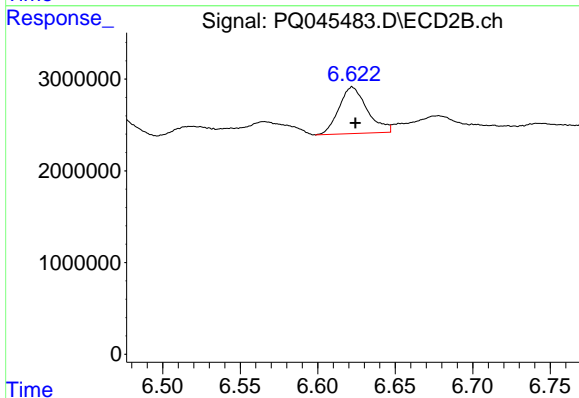




#27 AR-1254-2

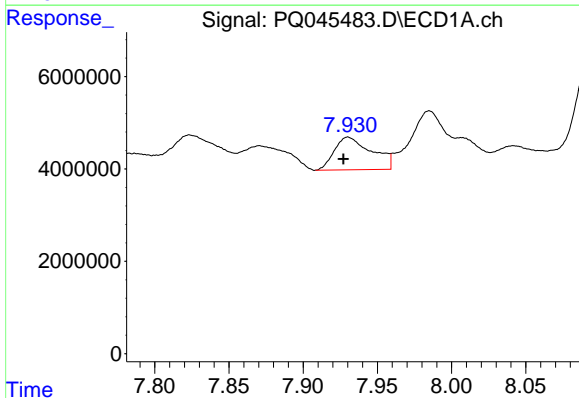
R.T.: 7.545 min  
 Delta R.T.: -0.002 min  
 Response: 26980583  
 Conc: 102.94 ng/ml

Instrument :  
 ECD\_Q  
 ClientSampleId :



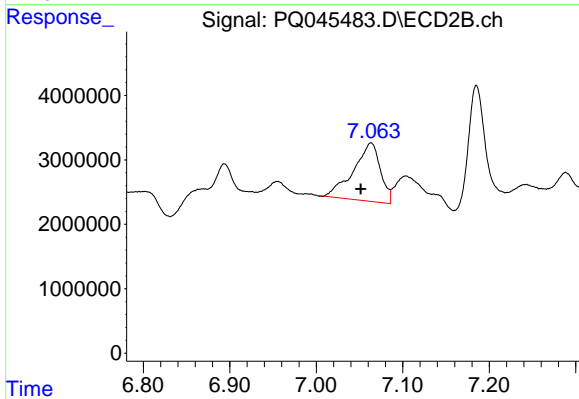
#27 AR-1254-2

R.T.: 6.622 min  
 Delta R.T.: -0.002 min  
 Response: 6426038  
 Conc: 48.03 ng/ml



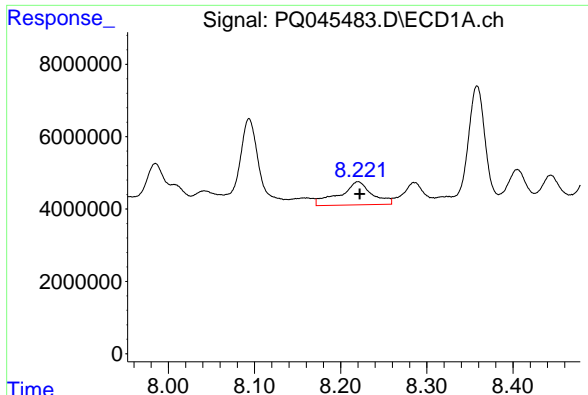
#28 AR-1254-3

R.T.: 7.931 min  
 Delta R.T.: 0.003 min  
 Response: 12392057  
 Conc: 43.34 ng/ml



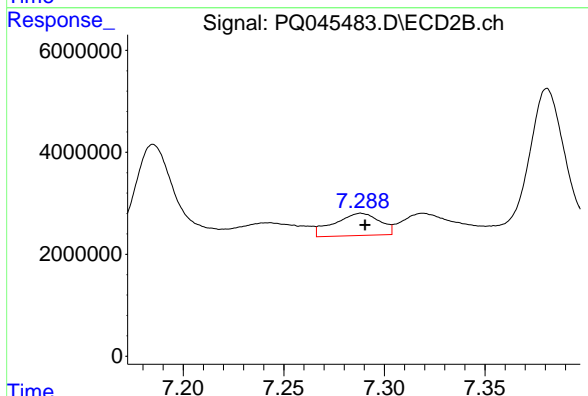
#28 AR-1254-3

R.T.: 7.063 min  
 Delta R.T.: 0.012 min  
 Response: 19563728  
 Conc: 81.62 ng/ml

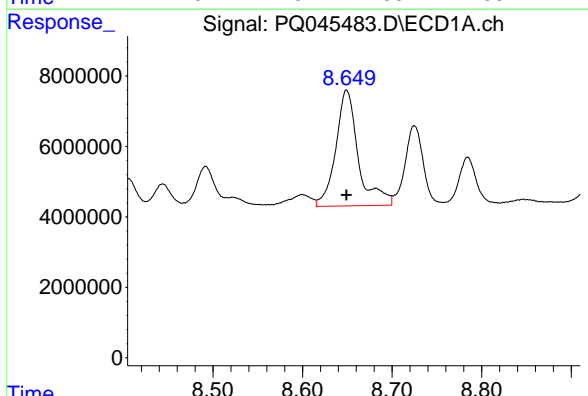


#29 AR-1254-4  
 R.T.: 8.220 min  
 Delta R.T.: -0.002 min  
 Response: 16789400  
 Conc: 77.48 ng/ml

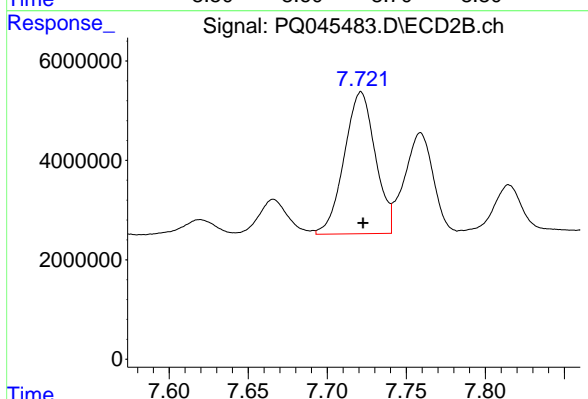
Instrument :  
 ECD\_Q  
 ClientSampleId :



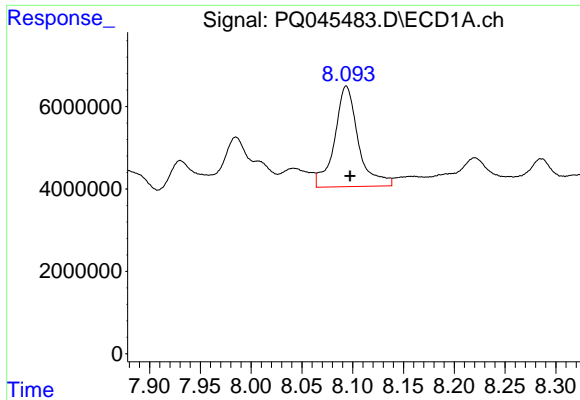
#29 AR-1254-4  
 R.T.: 7.288 min  
 Delta R.T.: -0.002 min  
 Response: 6873046  
 Conc: 41.16 ng/ml



#30 AR-1254-5  
 R.T.: 8.649 min  
 Delta R.T.: 0.000 min  
 Response: 57629222  
 Conc: 234.19 ng/ml



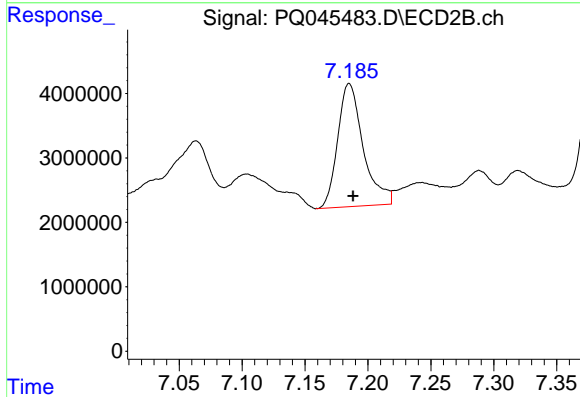
#30 AR-1254-5  
 R.T.: 7.721 min  
 Delta R.T.: -0.001 min  
 Response: 39116733  
 Conc: 151.80 ng/ml



#31 AR-1260-1

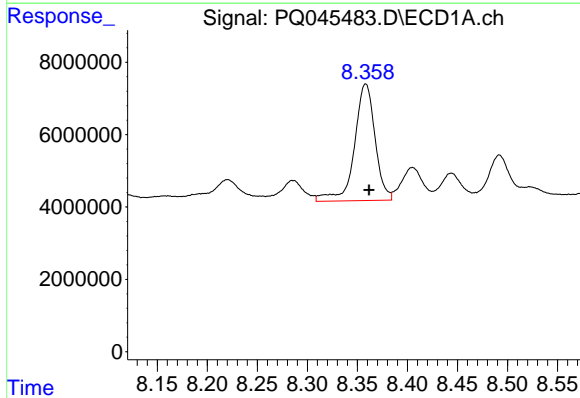
R.T.: 8.094 min  
 Delta R.T.: -0.004 min  
 Response: 39662492  
 Conc: 185.65 ng/ml

Instrument :  
 ECD\_Q  
 ClientSampleId :



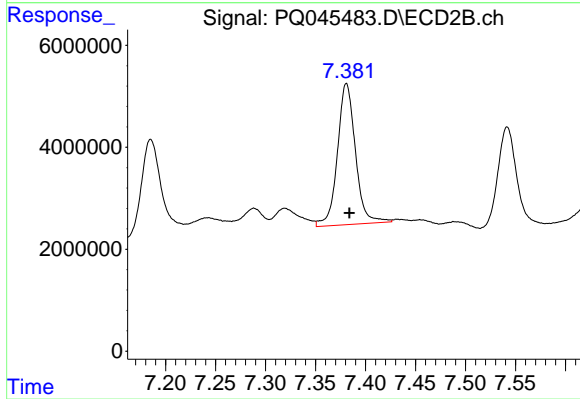
#31 AR-1260-1

R.T.: 7.185 min  
 Delta R.T.: -0.003 min  
 Response: 26947955  
 Conc: 176.05 ng/ml



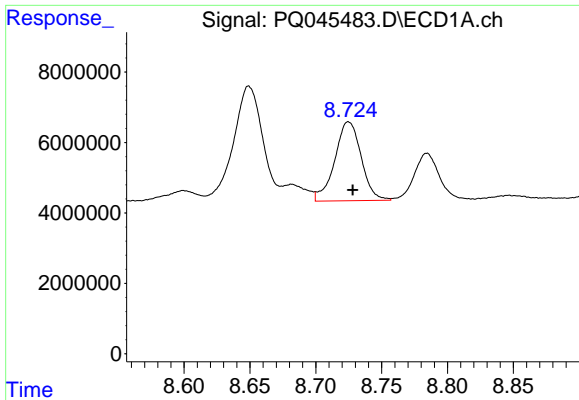
#32 AR-1260-2

R.T.: 8.358 min  
 Delta R.T.: -0.003 min  
 Response: 46324882  
 Conc: 190.10 ng/ml



#32 AR-1260-2

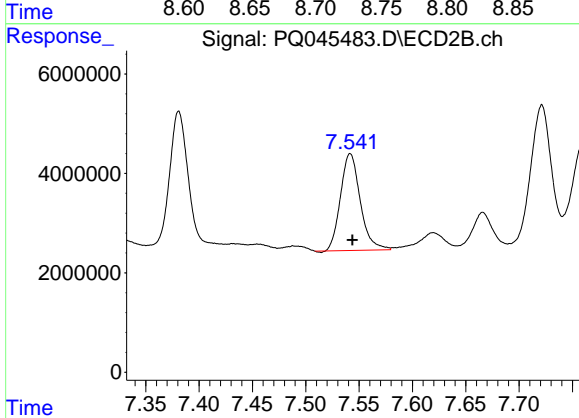
R.T.: 7.381 min  
 Delta R.T.: -0.003 min  
 Response: 34713067  
 Conc: 173.77 ng/ml



#33 AR-1260-3

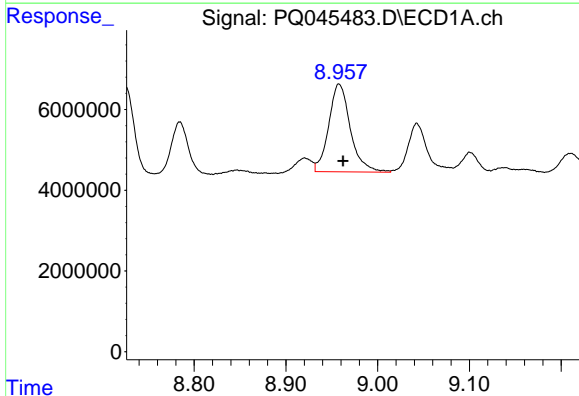
R.T.: 8.725 min  
 Delta R.T.: -0.003 min  
 Response: 31376582  
 Conc: 158.28 ng/ml

Instrument :  
 ECD\_Q  
 ClientSampleId :



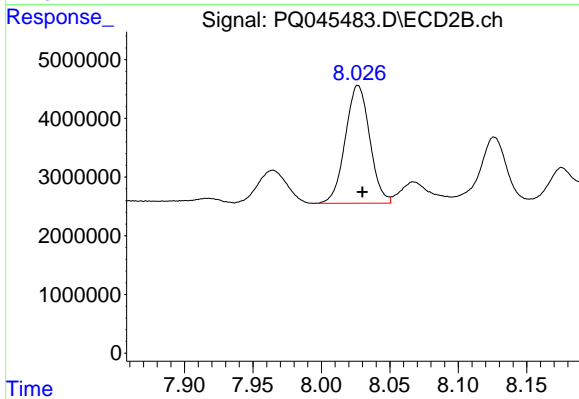
#33 AR-1260-3

R.T.: 7.542 min  
 Delta R.T.: -0.002 min  
 Response: 25042992  
 Conc: 136.11 ng/ml



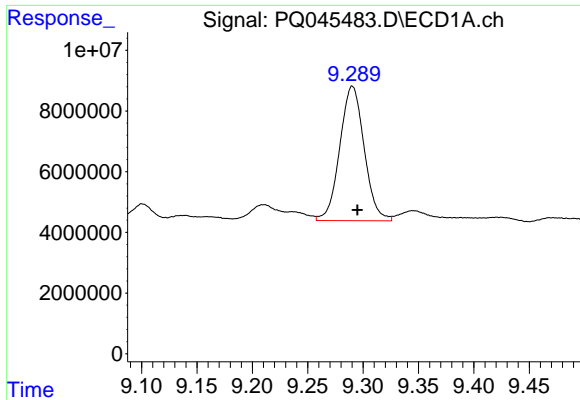
#34 AR-1260-4

R.T.: 8.958 min  
 Delta R.T.: -0.004 min  
 Response: 35724825  
 Conc: 156.27 ng/ml



#34 AR-1260-4

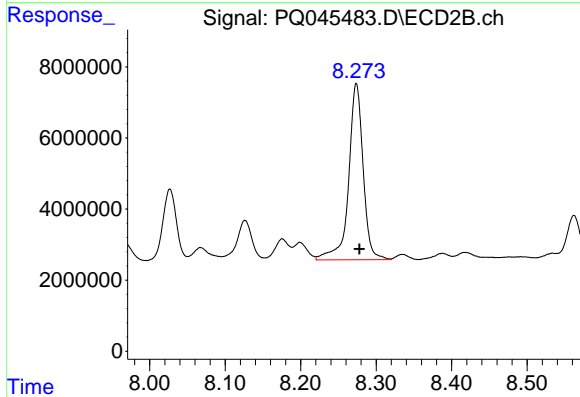
R.T.: 8.027 min  
 Delta R.T.: -0.003 min  
 Response: 24897883  
 Conc: 137.23 ng/ml



#35 AR-1260-5

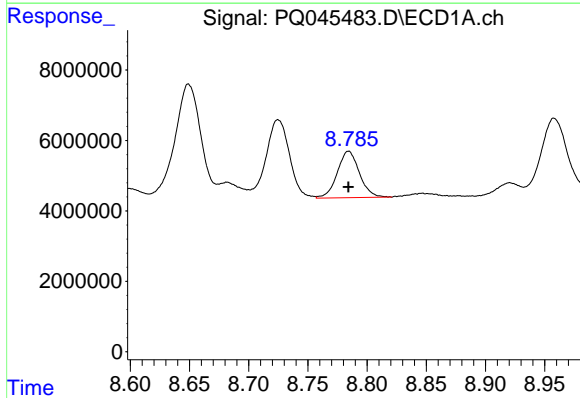
R.T.: 9.290 min  
Delta R.T.: -0.005 min  
Response: 67998169  
Conc: 130.67 ng/ml

Instrument :  
ECD\_Q  
ClientSampleId :



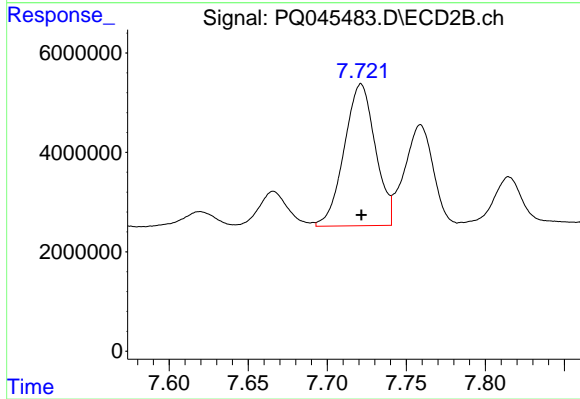
#35 AR-1260-5

R.T.: 8.274 min  
Delta R.T.: -0.004 min  
Response: 66454427  
Conc: 129.89 ng/ml



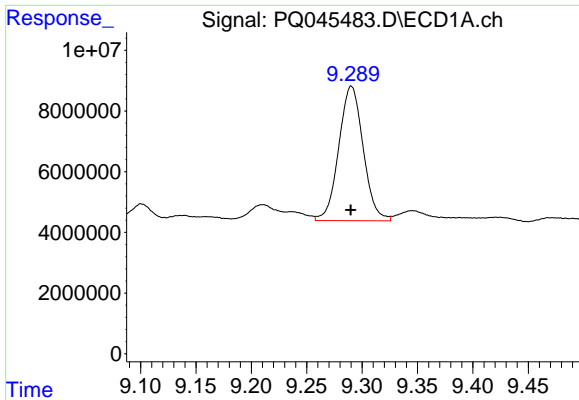
#36 AR-1262-1

R.T.: 8.784 min  
Delta R.T.: 0.000 min  
Response: 17209326  
Conc: 124.46 ng/ml



#36 AR-1262-1

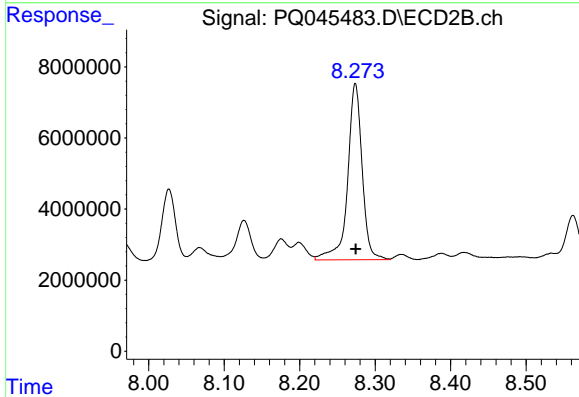
R.T.: 7.721 min  
Delta R.T.: 0.000 min  
Response: 39116733  
Conc: 268.15 ng/ml



#37 AR-1262-2

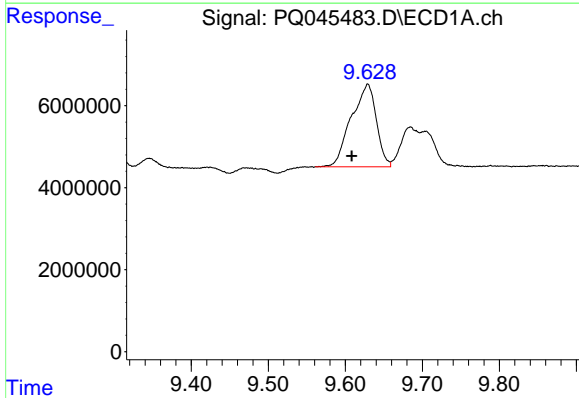
R.T.: 9.290 min  
 Delta R.T.: 0.000 min  
 Response: 67998169  
 Conc: 104.90 ng/ml

Instrument :  
 ECD\_Q  
 ClientSampled :



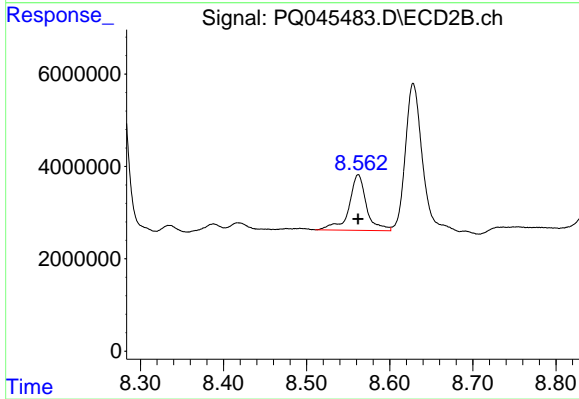
#37 AR-1262-2

R.T.: 8.274 min  
 Delta R.T.: 0.000 min  
 Response: 66454427  
 Conc: 102.14 ng/ml



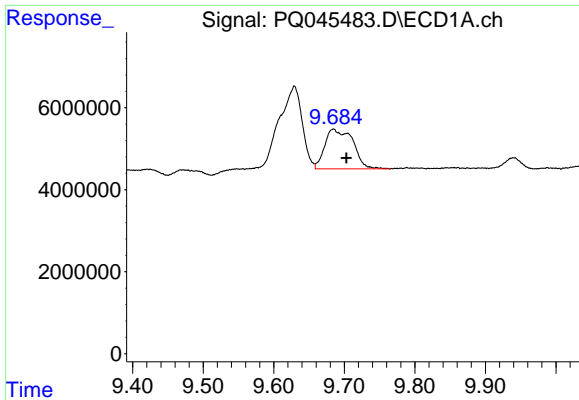
#38 AR-1262-3

R.T.: 9.629 min  
 Delta R.T.: 0.021 min  
 Response: 45576880  
 Conc: 99.62 ng/ml



#38 AR-1262-3

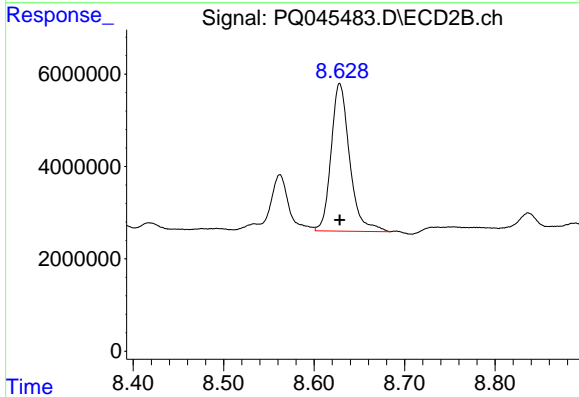
R.T.: 8.562 min  
 Delta R.T.: 0.000 min  
 Response: 17590617  
 Conc: 66.03 ng/ml



#39 AR-1262-4

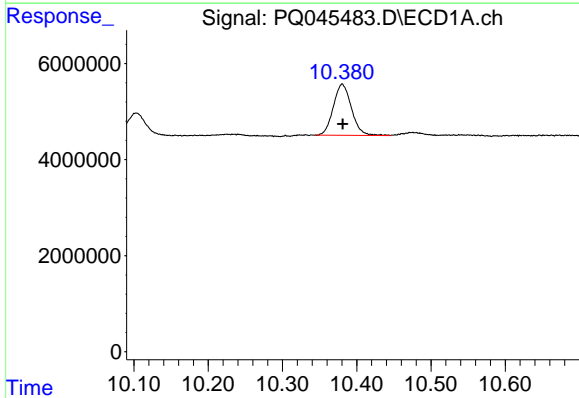
R.T.: 9.684 min  
 Delta R.T.: -0.018 min  
 Response: 26810444  
 Conc: 73.54 ng/ml

Instrument :  
 ECD\_Q  
 ClientSampled :



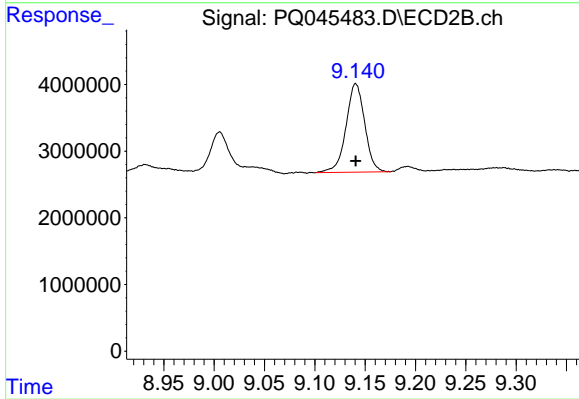
#39 AR-1262-4

R.T.: 8.628 min  
 Delta R.T.: 0.000 min  
 Response: 45495578  
 Conc: 86.91 ng/ml



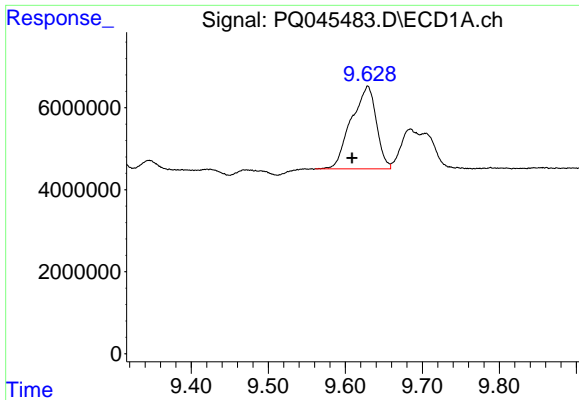
#40 AR-1262-5

R.T.: 10.381 min  
 Delta R.T.: 0.000 min  
 Response: 18002090  
 Conc: 63.16 ng/ml



#40 AR-1262-5

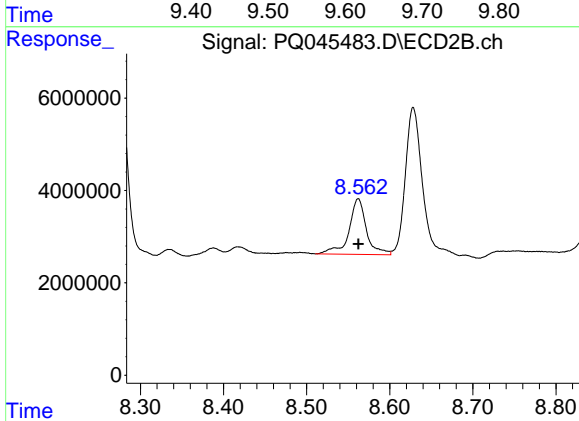
R.T.: 9.141 min  
 Delta R.T.: 0.000 min  
 Response: 17165318  
 Conc: 62.42 ng/ml



#41 AR-1268-1

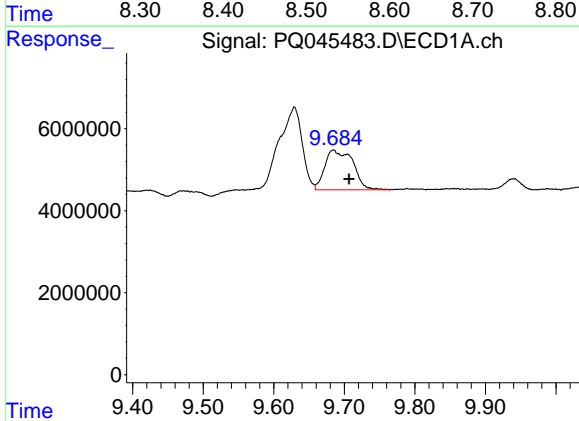
R.T.: 9.629 min  
Delta R.T.: 0.020 min  
Response: 45576880  
Conc: 53.94 ng/ml

Instrument :  
ECD\_Q  
ClientSampleId :



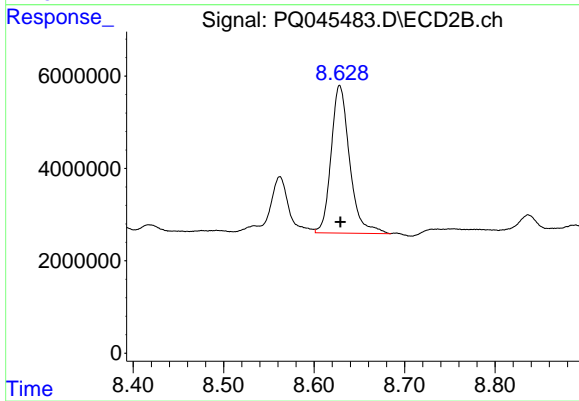
#41 AR-1268-1

R.T.: 8.562 min  
Delta R.T.: 0.000 min  
Response: 17590617  
Conc: 21.90 ng/ml



#42 AR-1268-2

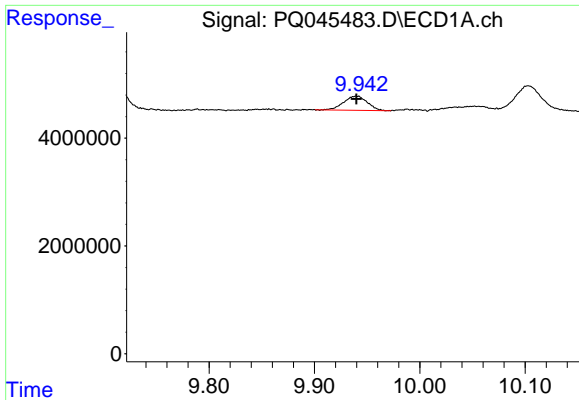
R.T.: 9.684 min  
Delta R.T.: -0.022 min  
Response: 26810444  
Conc: 32.41 ng/ml



#42 AR-1268-2

R.T.: 8.628 min  
Delta R.T.: 0.000 min  
Response: 45495578  
Conc: 59.81 ng/ml

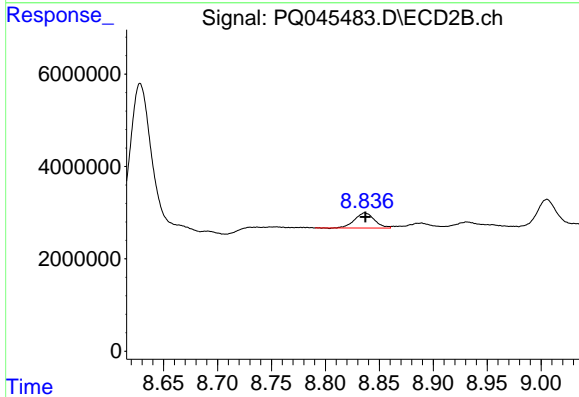




#43 AR-1268-3

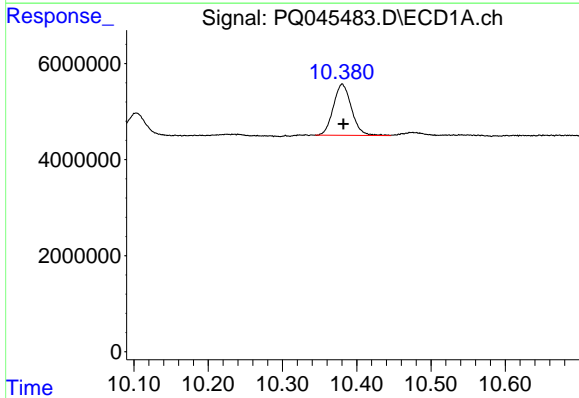
R.T.: 9.940 min  
 Delta R.T.: 0.000 min  
 Response: 4071039  
 Conc: 5.80 ng/ml

Instrument :  
 ECD\_Q  
 ClientSampleId :



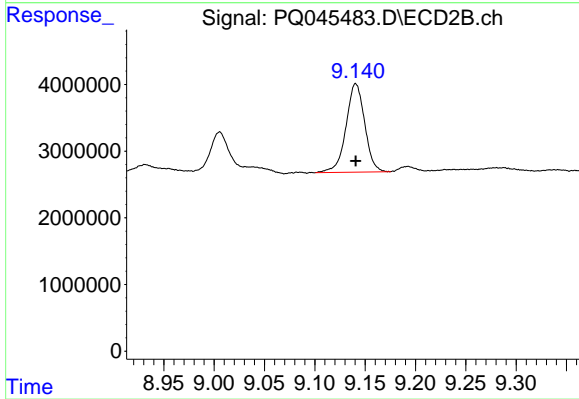
#43 AR-1268-3

R.T.: 8.837 min  
 Delta R.T.: 0.000 min  
 Response: 4205959  
 Conc: 6.73 ng/ml



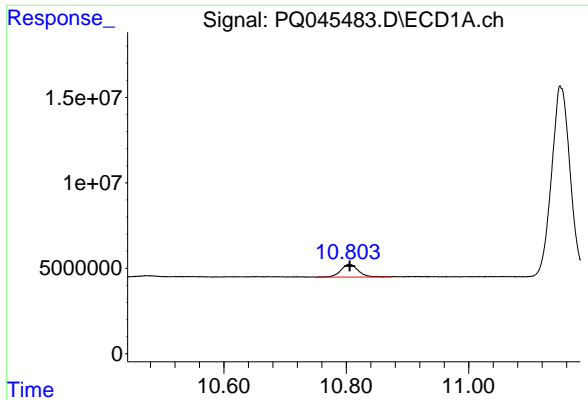
#44 AR-1268-4

R.T.: 10.381 min  
 Delta R.T.: -0.001 min  
 Response: 18002090  
 Conc: 54.76 ng/ml



#44 AR-1268-4

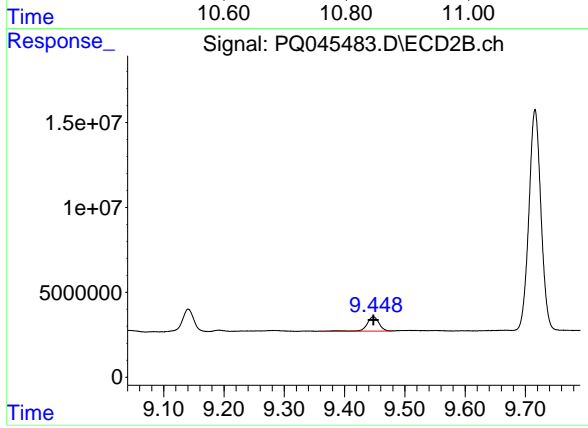
R.T.: 9.141 min  
 Delta R.T.: 0.000 min  
 Response: 17165318  
 Conc: 53.94 ng/ml



#45 AR-1268-5

R.T.: 10.805 min  
Delta R.T.: 0.000 min  
Response: 14882213  
Conc: 5.53 ng/ml

Instrument :  
ECD\_Q  
ClientSampleId :



#45 AR-1268-5

R.T.: 9.448 min  
Delta R.T.: 0.000 min  
Response: 11859469  
Conc: 4.91 ng/ml