

Data Path : Z:\pestpcbsrv\HPCHEM1\ECD\_Q\Data\PQ112625\  
 Data File : PQ071531.D  
 Signal(s) : Signal #1: ECD1A.ch Signal #2: ECD2B.ch  
 Acq On : 26 Nov 2025 08:51  
 Operator : YP\AJ  
 Sample : HEXANE  
 Misc :  
 ALS Vial : 1 Sample Multiplier: 1

Instrument :  
 ECD\_Q  
 ClientSampleId :  
 HEXANE

Integration File signal 1: autoint1.e  
 Integration File signal 2: autoint2.e  
 Quant Time: Nov 27 01:31:40 2025  
 Quant Method : Z:\pestpcbsrv\HPCHEM1\ECD\_Q\Method\PQ111825.M  
 Quant Title : GC EXTRACTABLES  
 QLast Update : Wed Nov 19 04:02:38 2025  
 Response via : Initial Calibration  
 Integrator: ChemStation

Volume Inj. : 2 µl  
 Signal #1 Phase : ZB-MR1 Signal #2 Phase: ZB-MR2  
 Signal #1 Info : 30Mx0.32mmx 0.50µ Signal #2 Info : 30M x 0.32mm x 0.25µm

Compound	RT#1	RT#2	Resp#1	Resp#2	ng/ml	ng/ml
-----						
System Monitoring Compounds						
1) SA Tetrachlo...	3.415	2.861	358623	320053	0.041	0.034
2) SA Decachlor...	8.544	7.647	306446	452208	0.049	0.049
Target Compounds						
3) L1 AR-1016-1	4.509	3.860	336857	11593130	1.019	32.014 #
4) L1 AR-1016-2	4.509	3.903	336857	15689264	0.708	31.942 #
5) L1 AR-1016-3	4.564	0.000	77643	0	0.260	N.D. #
6) L1 AR-1016-4	4.668	0.000	728469	0	2.967	N.D. #
7) L1 AR-1016-5	0.000	4.300	0	33598398	N.D.	120.611 #
8) L2 AR-1221-1	3.610	3.052	287419	2454779	2.649	21.360 #
9) L2 AR-1221-2	3.694	3.159	479049	2722158	6.039	31.913 #
10) L2 AR-1221-3	3.778	3.247f	824568	5079774	3.385	19.647 #
11) L3 AR-1232-1	3.742	3.247f	748671	5079774	3.793	23.957 #
12) L3 AR-1232-2	4.282f	3.903	285436	15689264	2.786	72.434 #
13) L3 AR-1232-3	4.509	0.000	336857	0	1.626	N.D. #
14) L3 AR-1232-4	4.668	4.179f	728469	29948685	7.016	318.958 #
15) L3 AR-1232-5	4.819	4.300	6584912	33598398	77.953	310.885 #
16) L4 AR-1242-1	4.509	3.860	336857	11593130	1.292	40.043 #
17) L4 AR-1242-2	4.509	3.903	336857	15689264	0.885	38.947 #
18) L4 AR-1242-3	4.564	0.000	77643	0	0.319	N.D. #
19) L4 AR-1242-4	4.668	4.179f	728469	29948685	3.749	149.872 #
20) L4 AR-1242-5	5.311f	4.651	59519477	26130723	297.923	99.249 #
21) L5 AR-1248-1	4.509	3.860	336857	11593130	1.768	54.459 #
22) L5 AR-1248-2	4.789f	0.000	337178	0	1.386	N.D. #
23) L5 AR-1248-3	0.000	4.179f	0	29948685	N.D.	106.917 #
24) L5 AR-1248-4	5.311	4.300	59519477	33598398	226.415	96.998 #
25) L5 AR-1248-5	5.311f	4.651	59519477	26130723	175.913	74.951 #
26) L6 AR-1254-1	5.311	4.651	59519477	26130723	171.348	48.763 #
27) L6 AR-1254-2	5.514	4.769	47838272	9031127	88.291	19.685 #
28) L6 AR-1254-3	5.895	5.167	7318499	14734232	12.709	19.405 #
29) L6 AR-1254-4	6.157	5.399	633723	17095166	1.500	34.203 #
30) L6 AR-1254-5	6.589	5.795	1486401	23541665	3.234	34.008 #
31) L7 AR-1260-1	6.045	5.291	5242483	39995146	11.715	80.162 #
32) L7 AR-1260-2	6.308	5.471	2147431	13691657	4.203	22.579 #
33) L7 AR-1260-3	6.662	5.641	1180578	35494221	3.085	60.039 #
34) L7 AR-1260-4	6.871	6.099	177392	6177256	0.424	12.470 #
35) L7 AR-1260-5	7.171	6.328	392697	17635743	0.472	15.358 #
36) L8 AR-1262-1	6.871	5.846	177392	3643749	0.380	5.698 #
37) L8 AR-1262-2	7.171	6.099	392697	6177256	0.462	10.393 #
38) L8 AR-1262-3	7.456	0.000	351195	0	0.626	N.D. #
39) L8 AR-1262-4	0.000	6.717f	0	7818756	N.D.	8.742 #
40) L8 AR-1262-5	7.993f	7.165	75783	350347	0.267	0.818 #
41) L9 AR-1268-1	7.456	0.000	351195	0	0.344	N.D. #

Data Path : Z:\pestpcbsrv\HPCHEM1\ECD\_Q\Data\PQ112625\  
 Data File : PQ071531.D  
 Signal(s) : Signal #1: ECD1A.ch Signal #2: ECD2B.ch  
 Acq On : 26 Nov 2025 08:51  
 Operator : YP\AJ  
 Sample : HEXANE  
 Misc :  
 ALS Vial : 1 Sample Multiplier: 1

Instrument :  
 ECD\_Q  
 ClientSampleId :  
 HEXANE

Integration File signal 1: autoint1.e  
 Integration File signal 2: autoint2.e  
 Quant Time: Nov 27 01:31:40 2025  
 Quant Method : Z:\pestpcbsrv\HPCHEM1\ECD\_Q\Method\PQ111825.M  
 Quant Title : GC EXTRACTABLES  
 QLast Update : Wed Nov 19 04:02:38 2025  
 Response via : Initial Calibration  
 Integrator: ChemStation

Volume Inj. : 2 µl  
 Signal #1 Phase : ZB-MR1 Signal #2 Phase: ZB-MR2  
 Signal #1 Info : 30Mx0.32mmx 0.50µ Signal #2 Info : 30M x 0.32mm x 0.25µm

	Compound	RT#1	RT#2	Resp#1	Resp#2	ng/ml	ng/ml
42)	L9 AR-1268-2	0.000	6.717f	0	7818756	N.D.	5.801 #
43)	L9 AR-1268-3	7.676f	6.901	102262	3219650	0.131	2.835 #
44)	L9 AR-1268-4	7.993f	7.165	75783	350347	0.224	0.691 #
45)	L9 AR-1268-5	8.339f	7.434	143605	456451	0.063	0.129 #

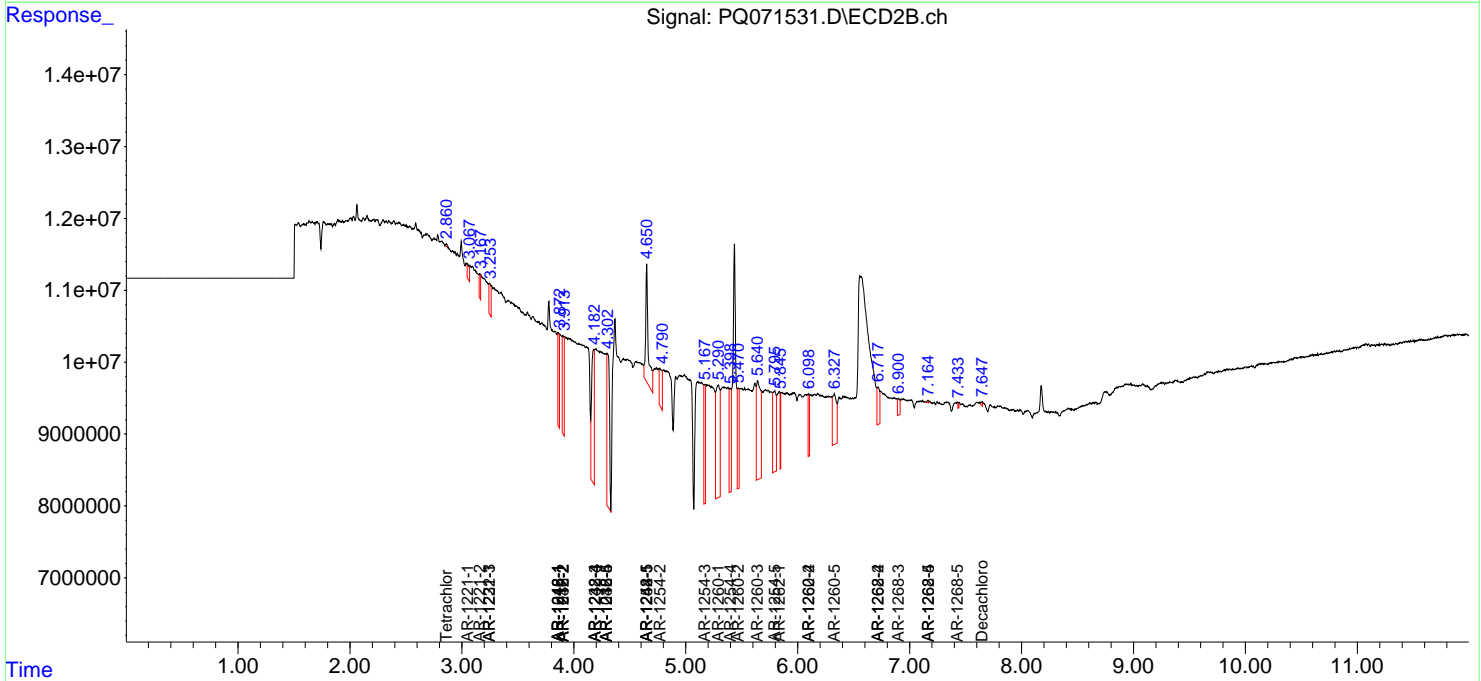
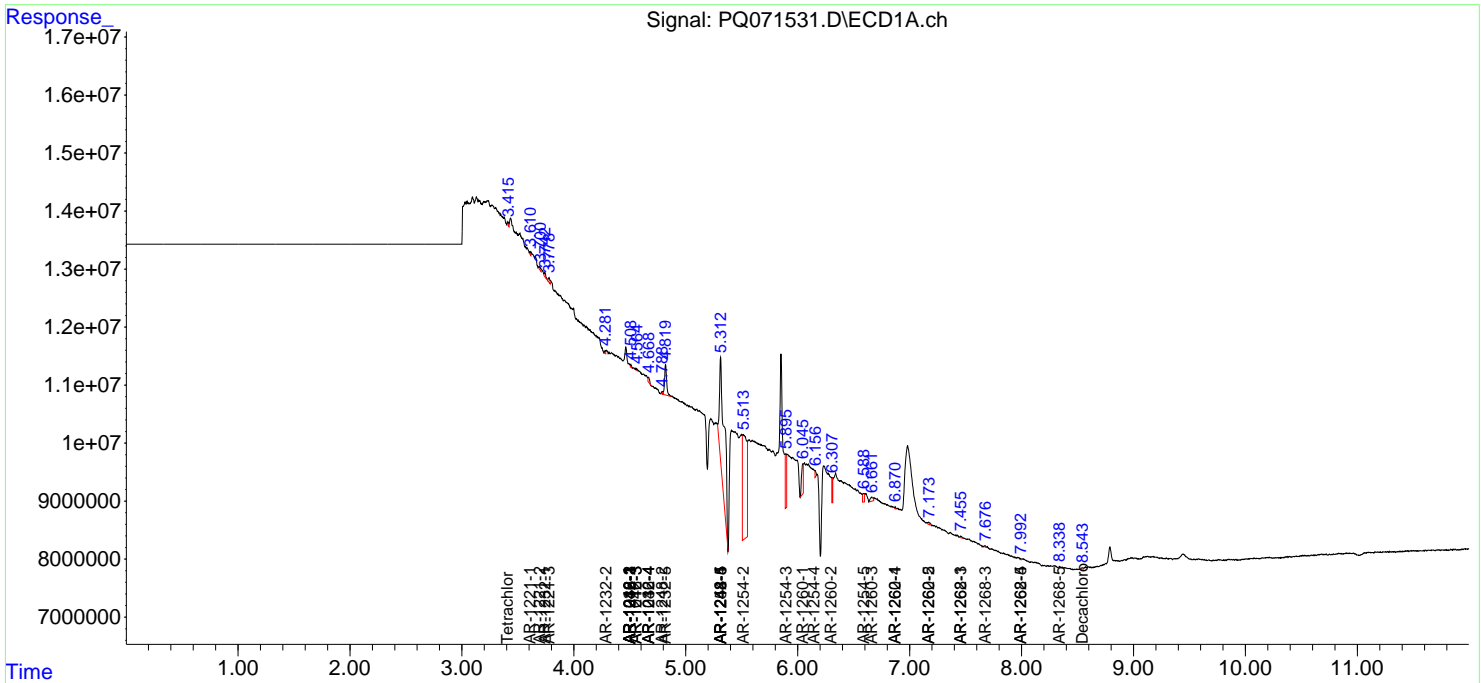
(f)=RT Delta > 1/2 Window (#)=Amounts differ by > 25% (m)=manual int.

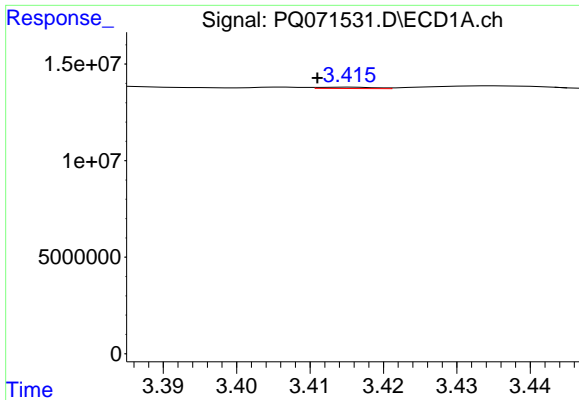
Data Path : Z:\pestpcbsrv\HPCHEM1\ECD\_Q\Data\PQ112625\  
 Data File : PQ071531.D  
 Signal(s) : Signal #1: ECD1A.ch Signal #2: ECD2B.ch  
 Acq On : 26 Nov 2025 08:51  
 Operator : YP\AJ  
 Sample : HEXANE  
 Misc :  
 ALS Vial : 1 Sample Multiplier: 1

Instrument :  
 ECD\_Q  
 ClientSampleId :  
 HEXANE

Integration File signal 1: autoint1.e  
 Integration File signal 2: autoint2.e  
 Quant Time: Nov 27 01:31:40 2025  
 Quant Method : Z:\pestpcbsrv\HPCHEM1\ECD\_Q\Method\PQ111825.M  
 Quant Title : GC EXTRACTABLES  
 QLast Update : Wed Nov 19 04:02:38 2025  
 Response via : Initial Calibration  
 Integrator: ChemStation

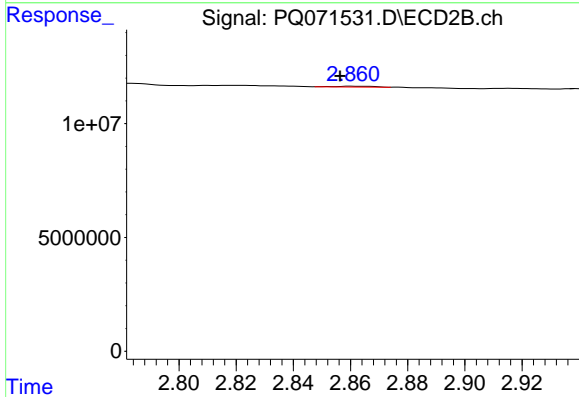
Volume Inj. : 2 µl  
 Signal #1 Phase : ZB-MR1 Signal #2 Phase: ZB-MR2  
 Signal #1 Info : 30Mx0.32mmx 0.50µ Signal #2 Info : 30M x 0.32mm x 0.25µm



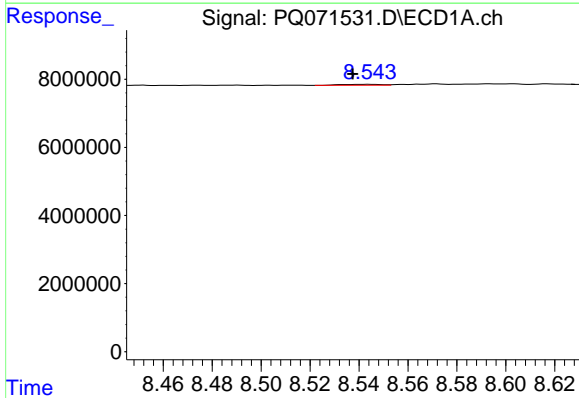


#1 Tetrachloro-m-xylene  
 R.T.: 3.415 min  
 Delta R.T.: 0.004 min  
 Response: 358623  
 Conc: 0.04 ng/ml

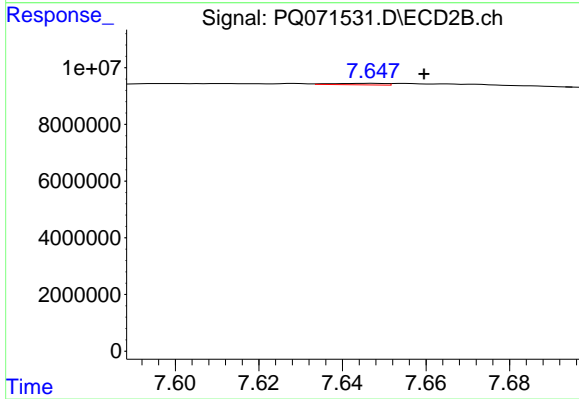
Instrument :  
 ECD\_Q  
 ClientSampleId :  
 HEXANE



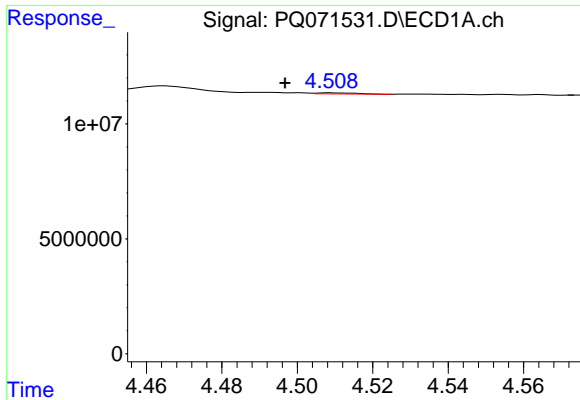
#1 Tetrachloro-m-xylene  
 R.T.: 2.861 min  
 Delta R.T.: 0.004 min  
 Response: 320053  
 Conc: 0.03 ng/ml



#2 Decachlorobiphenyl  
 R.T.: 8.544 min  
 Delta R.T.: 0.006 min  
 Response: 306446  
 Conc: 0.05 ng/ml



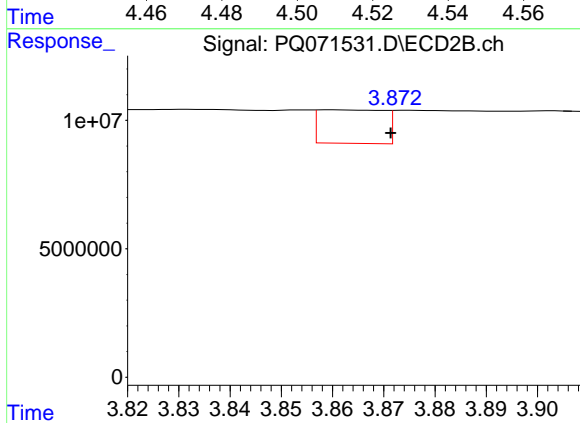
#2 Decachlorobiphenyl  
 R.T.: 7.647 min  
 Delta R.T.: -0.012 min  
 Response: 452208  
 Conc: 0.05 ng/ml



#3 AR-1016-1

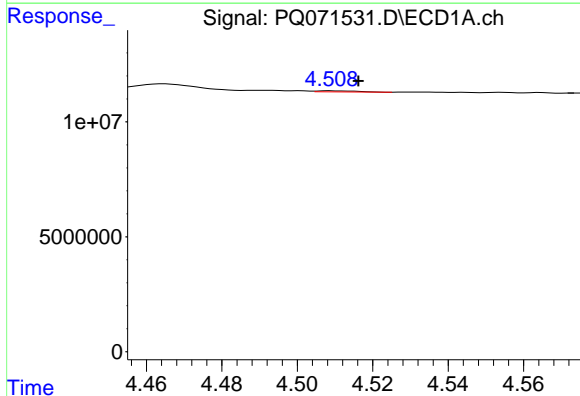
R.T.: 4.509 min  
 Delta R.T.: 0.012 min  
 Response: 336857  
 Conc: 1.02 ng/ml

Instrument : ECD\_Q  
 ClientSampleId : HEXANE



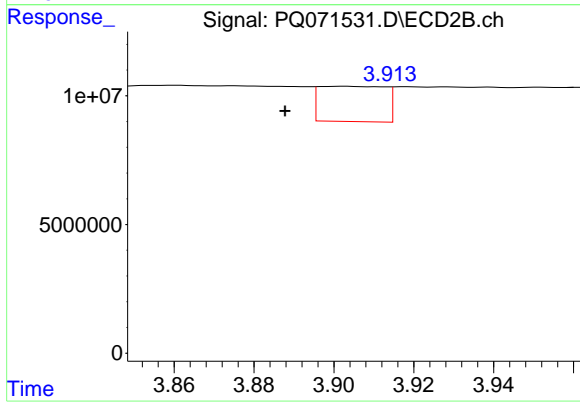
#3 AR-1016-1

R.T.: 3.860 min  
 Delta R.T.: -0.011 min  
 Response: 11593130  
 Conc: 32.01 ng/ml



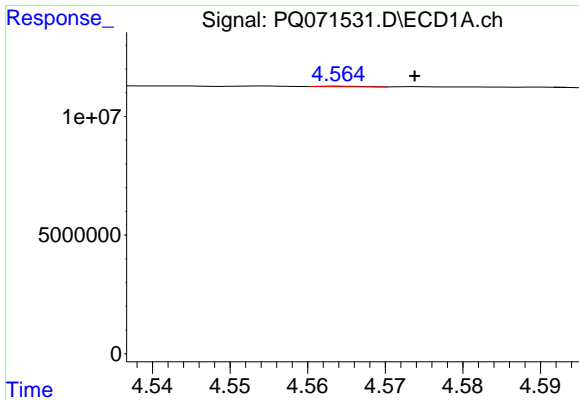
#4 AR-1016-2

R.T.: 4.509 min  
 Delta R.T.: -0.008 min  
 Response: 336857  
 Conc: 0.71 ng/ml



#4 AR-1016-2

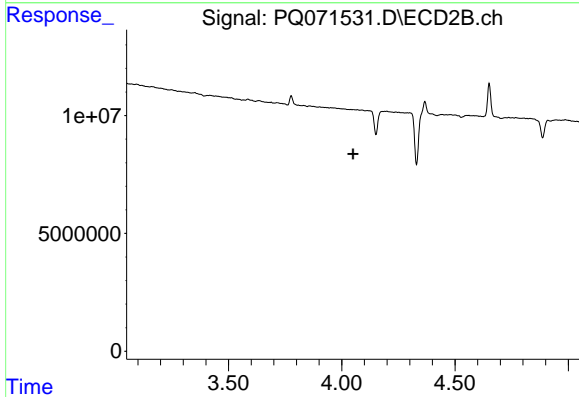
R.T.: 3.903 min  
 Delta R.T.: 0.015 min  
 Response: 15689264  
 Conc: 31.94 ng/ml



#5 AR-1016-3

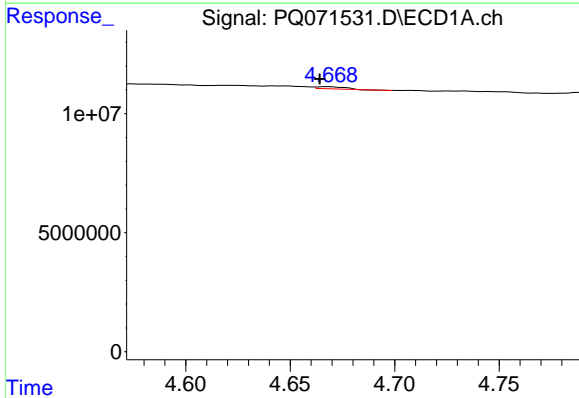
R.T.: 4.564 min  
 Delta R.T.: -0.010 min  
 Response: 77643  
 Conc: 0.26 ng/ml

Instrument :  
 ECD\_Q  
 ClientSampleId :  
 HEXANE



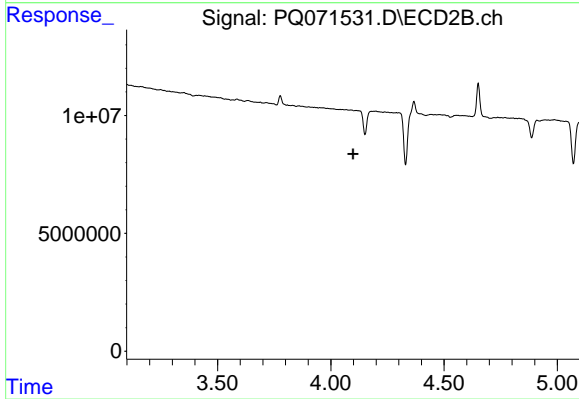
#5 AR-1016-3

R.T.: 0.000 min  
 Exp R.T. : 4.050 min  
 Response: 0  
 Conc: N.D.



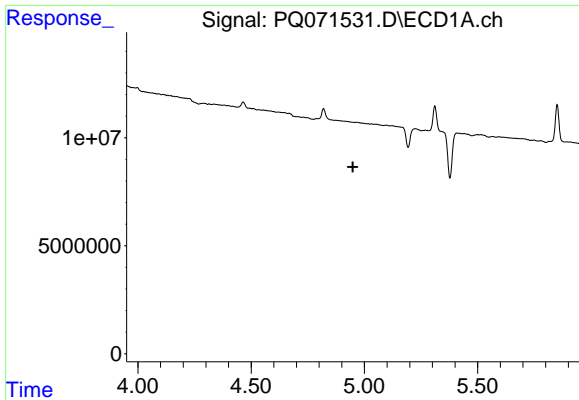
#6 AR-1016-4

R.T.: 4.668 min  
 Delta R.T.: 0.004 min  
 Response: 728469  
 Conc: 2.97 ng/ml



#6 AR-1016-4

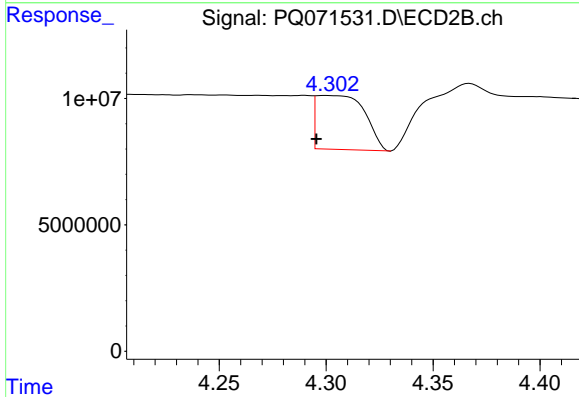
R.T.: 0.000 min  
 Exp R.T. : 4.098 min  
 Response: 0  
 Conc: N.D.



#7 AR-1016-5

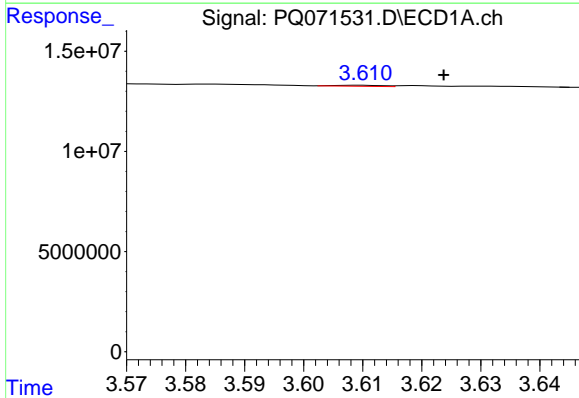
R.T.: 0.000 min  
 Exp R.T.: 4.949 min  
 Response: 0  
 Conc: N.D.

Instrument : ECD\_Q  
 ClientSampleId : HEXANE



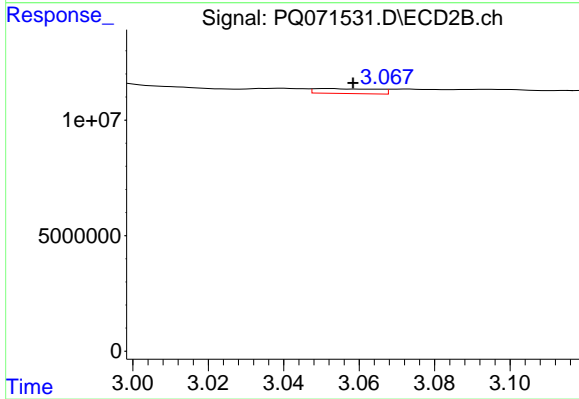
#7 AR-1016-5

R.T.: 4.300 min  
 Delta R.T.: 0.004 min  
 Response: 33598398  
 Conc: 120.61 ng/ml



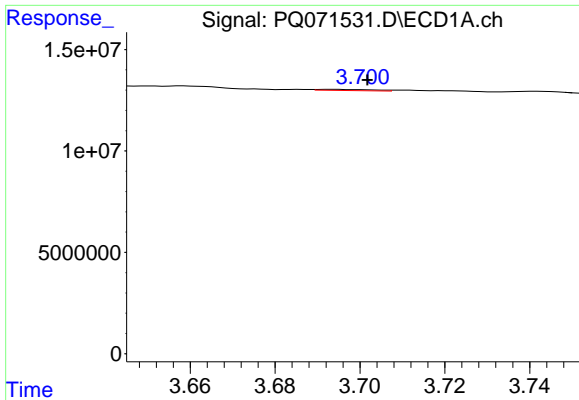
#8 AR-1221-1

R.T.: 3.610 min  
 Delta R.T.: -0.014 min  
 Response: 287419  
 Conc: 2.65 ng/ml



#8 AR-1221-1

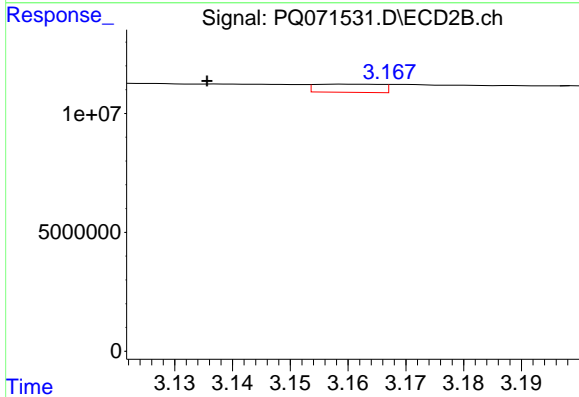
R.T.: 3.052 min  
 Delta R.T.: -0.006 min  
 Response: 2454779  
 Conc: 21.36 ng/ml



#9 AR-1221-2

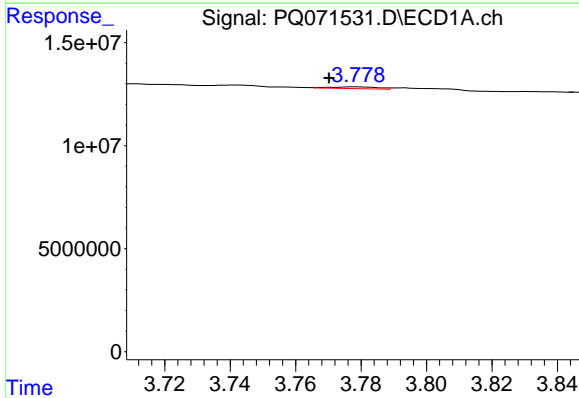
R.T.: 3.694 min  
 Delta R.T.: -0.008 min  
 Response: 479049  
 Conc: 6.04 ng/ml

Instrument :  
 ECD\_Q  
 ClientSampleId :  
 HEXANE



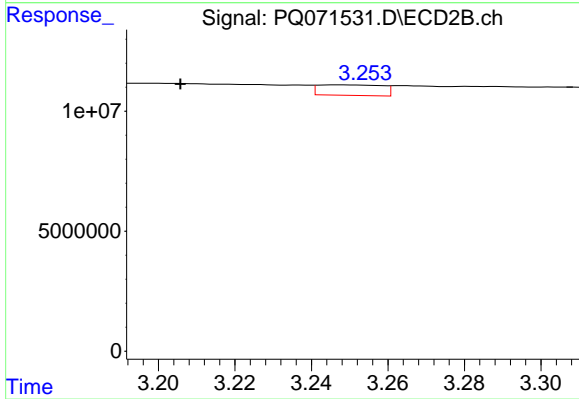
#9 AR-1221-2

R.T.: 3.159 min  
 Delta R.T.: 0.024 min  
 Response: 2722158  
 Conc: 31.91 ng/ml



#10 AR-1221-3

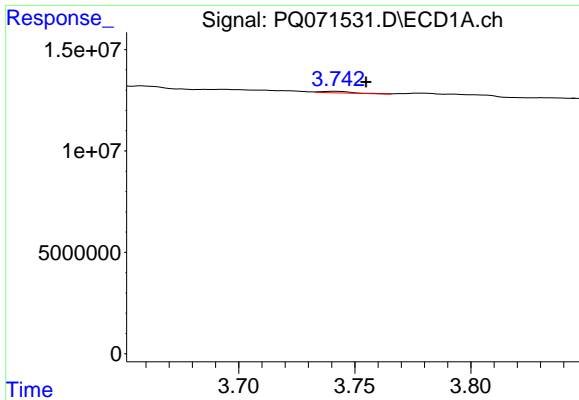
R.T.: 3.778 min  
 Delta R.T.: 0.008 min  
 Response: 824568  
 Conc: 3.38 ng/ml



#10 AR-1221-3

R.T.: 3.247 min  
 Delta R.T.: 0.042 min  
 Response: 5079774  
 Conc: 19.65 ng/ml

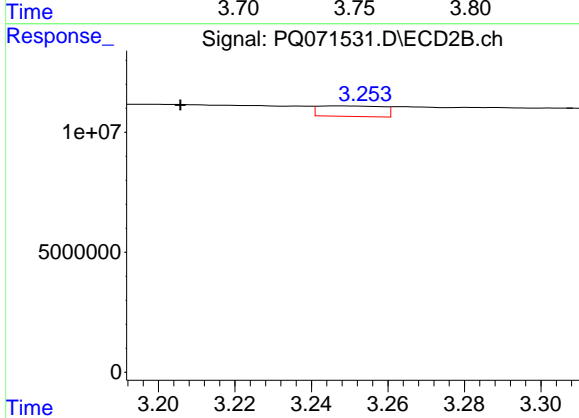




#11 AR-1232-1

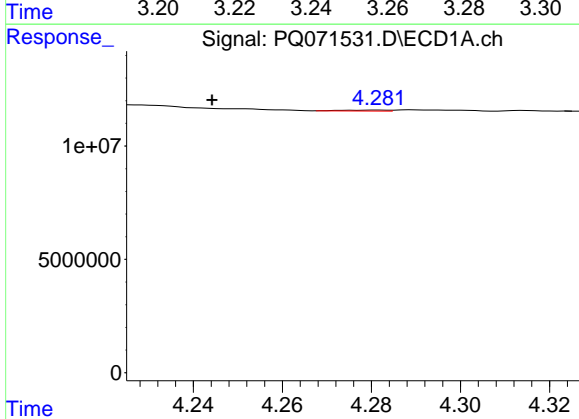
R.T.: 3.742 min  
 Delta R.T.: -0.013 min  
 Response: 748671  
 Conc: 3.79 ng/ml

Instrument :  
 ECD\_Q  
 ClientSampleId :  
 HEXANE



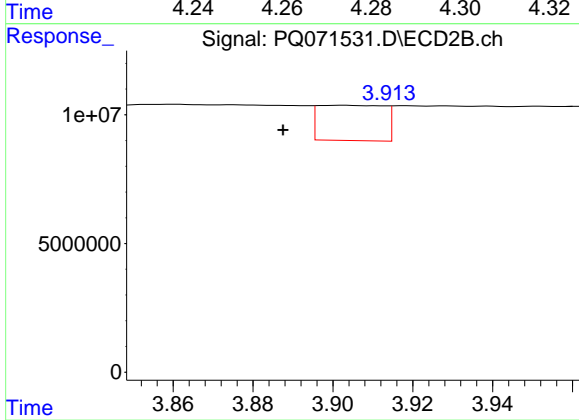
#11 AR-1232-1

R.T.: 3.247 min  
 Delta R.T.: 0.042 min  
 Response: 5079774  
 Conc: 23.96 ng/ml



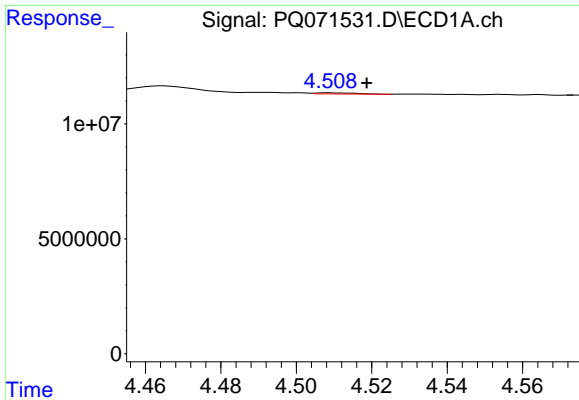
#12 AR-1232-2

R.T.: 4.282 min  
 Delta R.T.: 0.037 min  
 Response: 285436  
 Conc: 2.79 ng/ml



#12 AR-1232-2

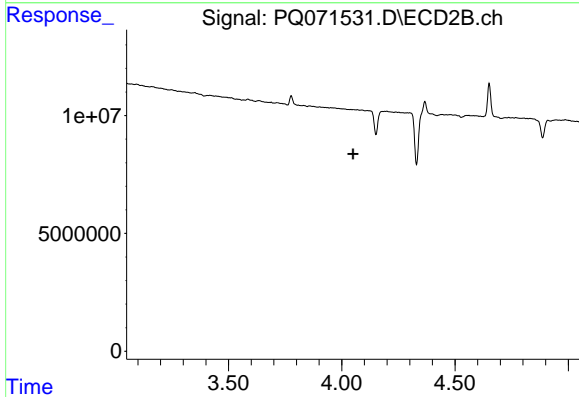
R.T.: 3.903 min  
 Delta R.T.: 0.016 min  
 Response: 15689264  
 Conc: 72.43 ng/ml



#13 AR-1232-3

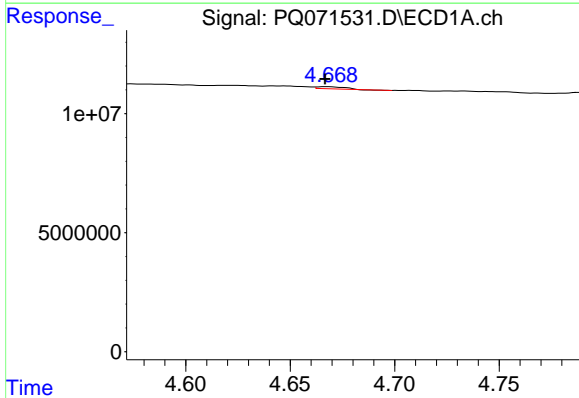
R.T.: 4.509 min  
 Delta R.T.: -0.010 min  
 Response: 336857  
 Conc: 1.63 ng/ml

Instrument :  
 ECD\_Q  
 ClientSampleId :  
 HEXANE



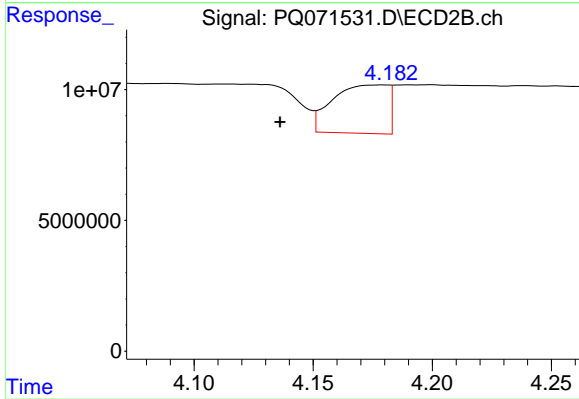
#13 AR-1232-3

R.T.: 0.000 min  
 Exp R.T. : 4.050 min  
 Response: 0  
 Conc: N.D.



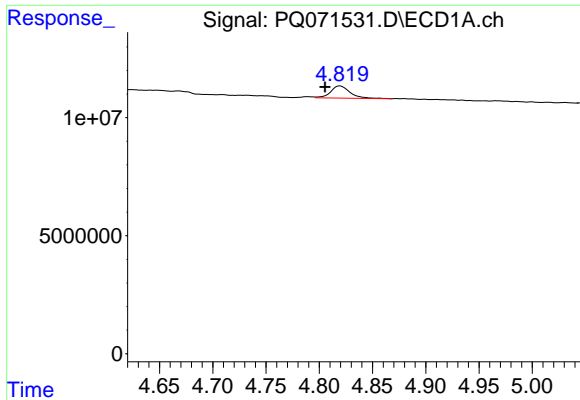
#14 AR-1232-4

R.T.: 4.668 min  
 Delta R.T.: 0.001 min  
 Response: 728469  
 Conc: 7.02 ng/ml



#14 AR-1232-4

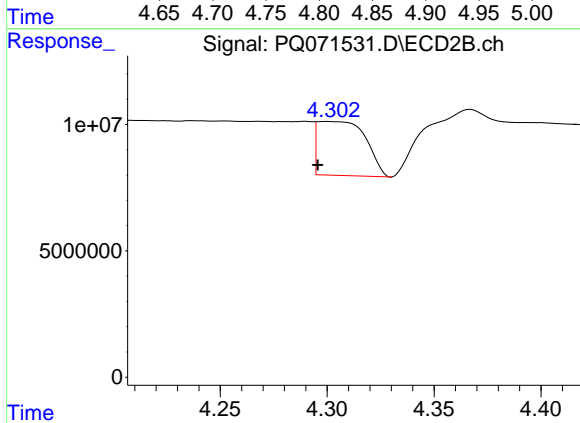
R.T.: 4.179 min  
 Delta R.T.: 0.043 min  
 Response: 29948685  
 Conc: 318.96 ng/ml



#15 AR-1232-5

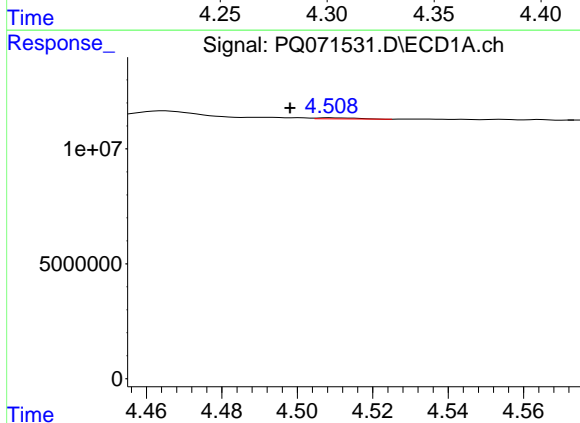
R.T.: 4.819 min  
 Delta R.T.: 0.014 min  
 Response: 6584912  
 Conc: 77.95 ng/ml

Instrument :  
 ECD\_Q  
 ClientSampleId :  
 HEXANE



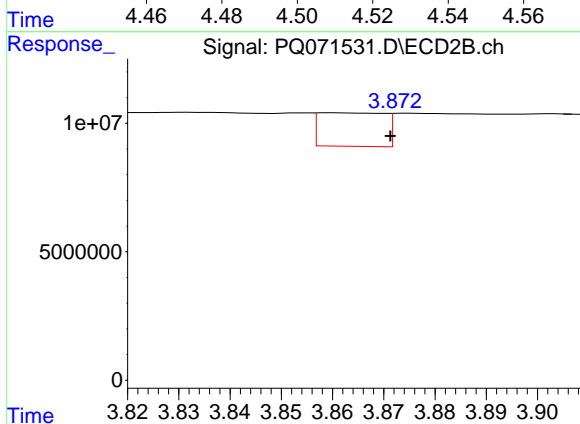
#15 AR-1232-5

R.T.: 4.300 min  
 Delta R.T.: 0.004 min  
 Response: 33598398  
 Conc: 310.88 ng/ml



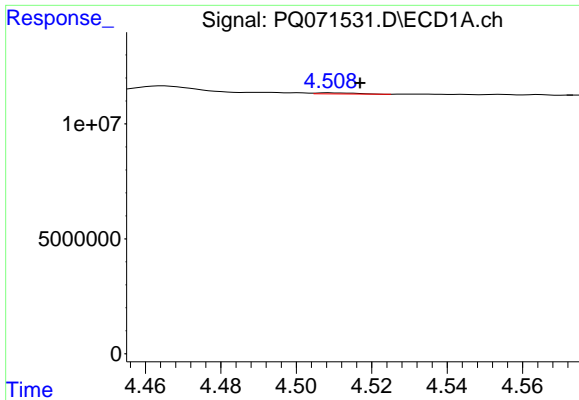
#16 AR-1242-1

R.T.: 4.509 min  
 Delta R.T.: 0.011 min  
 Response: 336857  
 Conc: 1.29 ng/ml



#16 AR-1242-1

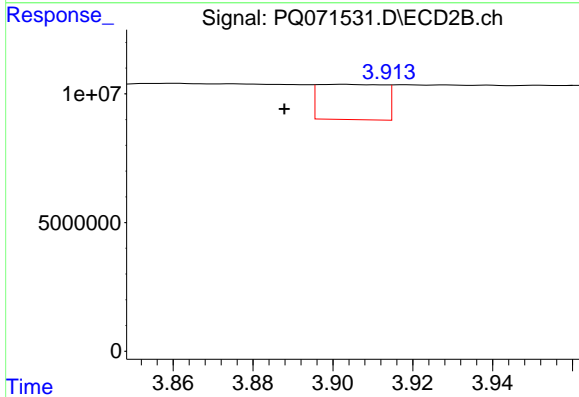
R.T.: 3.860 min  
 Delta R.T.: -0.011 min  
 Response: 11593130  
 Conc: 40.04 ng/ml



#17 AR-1242-2

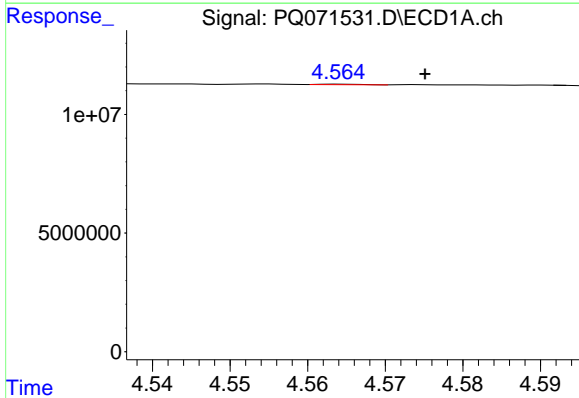
R.T.: 4.509 min  
 Delta R.T.: -0.008 min  
 Response: 336857  
 Conc: 0.88 ng/ml

Instrument :  
 ECD\_Q  
 ClientSampleId :  
 HEXANE



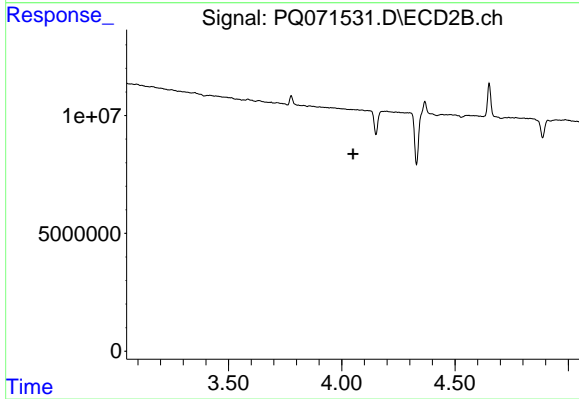
#17 AR-1242-2

R.T.: 3.903 min  
 Delta R.T.: 0.015 min  
 Response: 15689264  
 Conc: 38.95 ng/ml



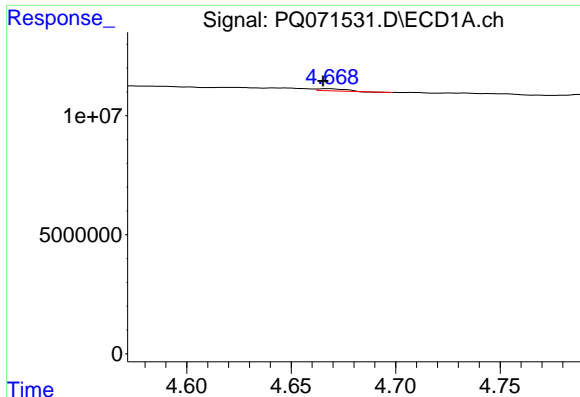
#18 AR-1242-3

R.T.: 4.564 min  
 Delta R.T.: -0.011 min  
 Response: 77643  
 Conc: 0.32 ng/ml



#18 AR-1242-3

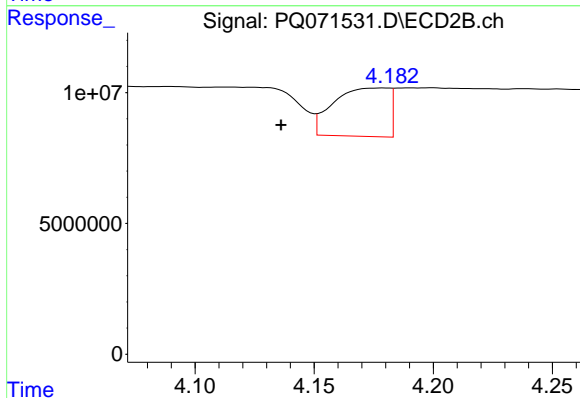
R.T.: 0.000 min  
 Exp R.T.: 4.050 min  
 Response: 0  
 Conc: N.D.



#19 AR-1242-4

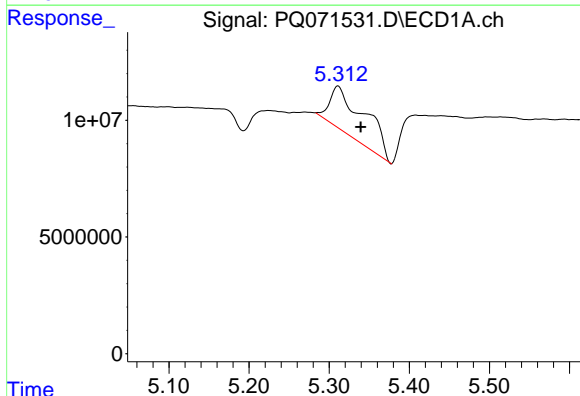
R.T.: 4.668 min  
 Delta R.T.: 0.003 min  
 Response: 728469  
 Conc: 3.75 ng/ml

Instrument :  
 ECD\_Q  
 ClientSampleId :  
 HEXANE



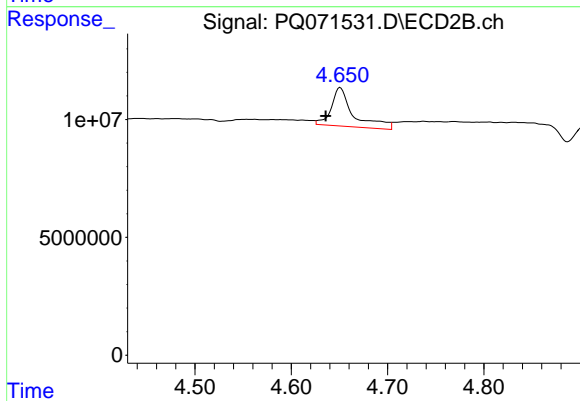
#19 AR-1242-4

R.T.: 4.179 min  
 Delta R.T.: 0.043 min  
 Response: 29948685  
 Conc: 149.87 ng/ml



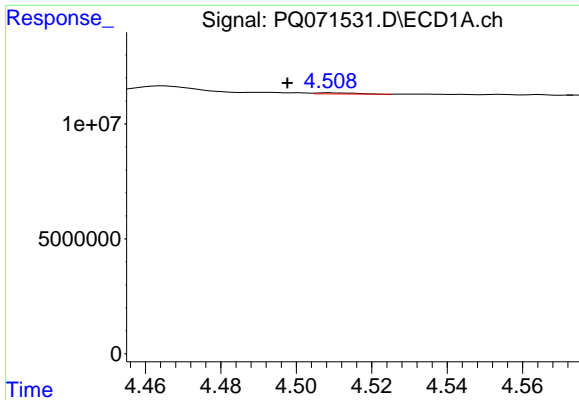
#20 AR-1242-5

R.T.: 5.311 min  
 Delta R.T.: -0.028 min  
 Response: 59519477  
 Conc: 297.92 ng/ml



#20 AR-1242-5

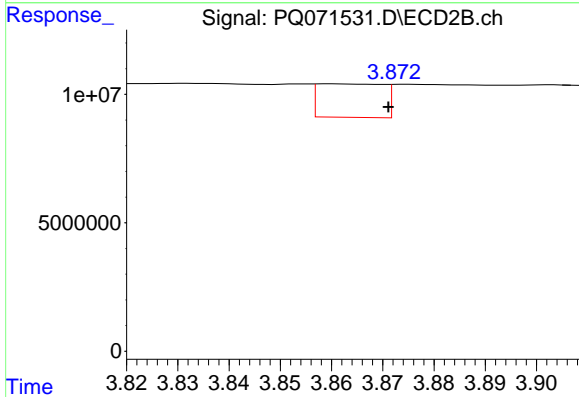
R.T.: 4.651 min  
 Delta R.T.: 0.015 min  
 Response: 26130723  
 Conc: 99.25 ng/ml



#21 AR-1248-1

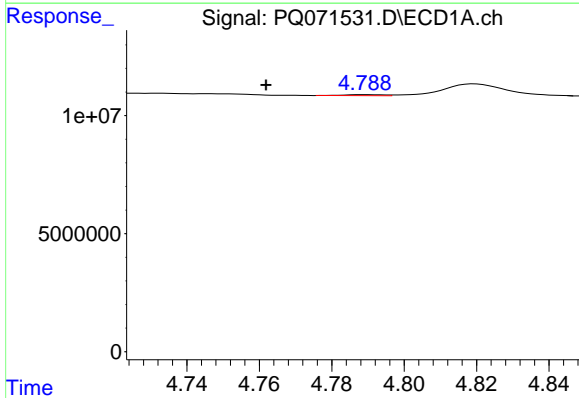
R.T.: 4.509 min  
 Delta R.T.: 0.011 min  
 Response: 336857  
 Conc: 1.77 ng/ml

Instrument :  
 ECD\_Q  
 ClientSampleId :  
 HEXANE



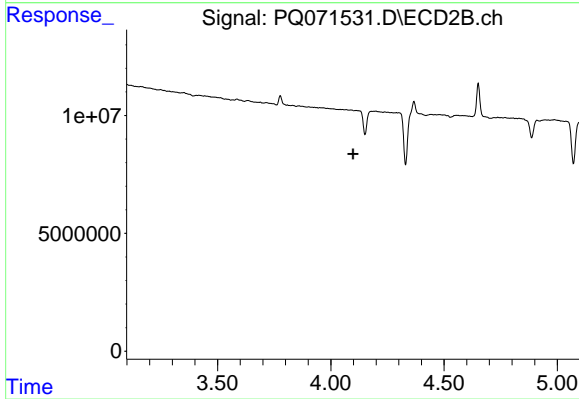
#21 AR-1248-1

R.T.: 3.860 min  
 Delta R.T.: -0.011 min  
 Response: 11593130  
 Conc: 54.46 ng/ml



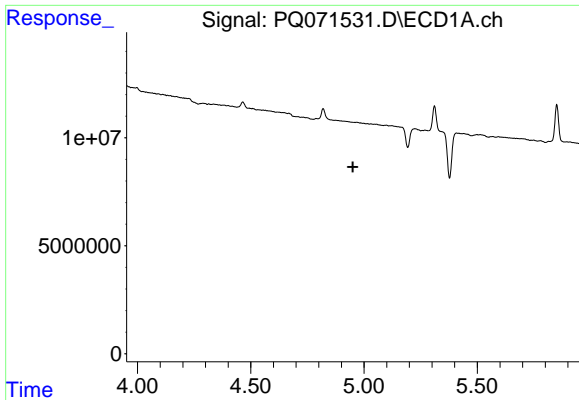
#22 AR-1248-2

R.T.: 4.789 min  
 Delta R.T.: 0.027 min  
 Response: 337178  
 Conc: 1.39 ng/ml



#22 AR-1248-2

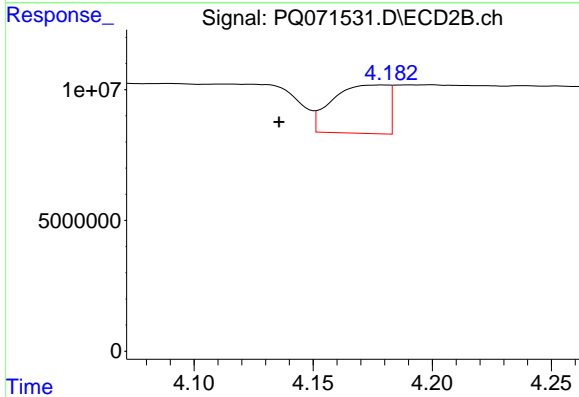
R.T.: 0.000 min  
 Exp R.T.: 4.098 min  
 Response: 0  
 Conc: N.D.



#23 AR-1248-3

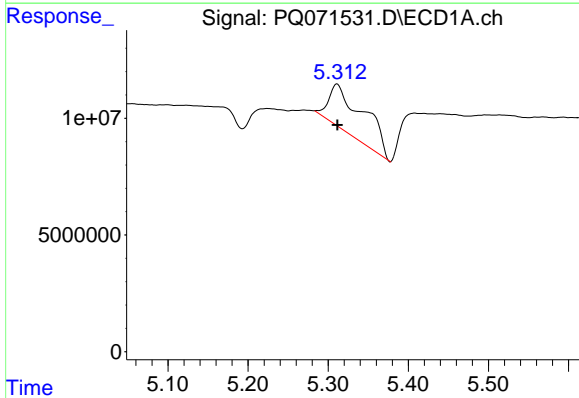
R.T.: 0.000 min  
 Exp R.T.: 4.950 min  
 Response: 0  
 Conc: N.D.

Instrument :  
 ECD\_Q  
 ClientSampleId :  
 HEXANE



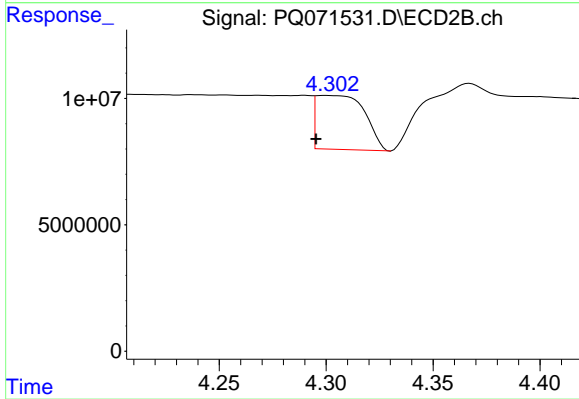
#23 AR-1248-3

R.T.: 4.179 min  
 Delta R.T.: 0.043 min  
 Response: 29948685  
 Conc: 106.92 ng/ml



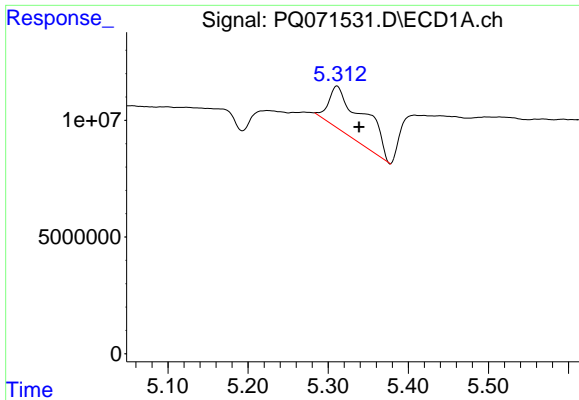
#24 AR-1248-4

R.T.: 5.311 min  
 Delta R.T.: 0.000 min  
 Response: 59519477  
 Conc: 226.41 ng/ml



#24 AR-1248-4

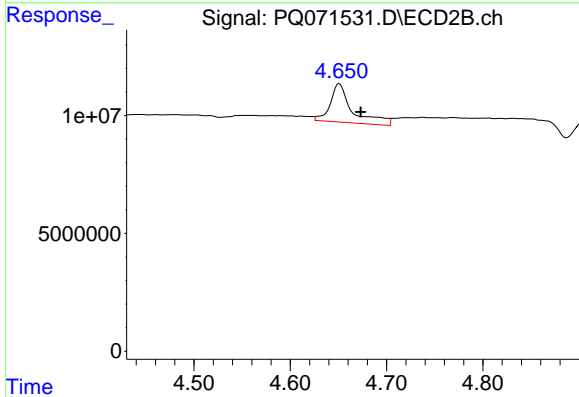
R.T.: 4.300 min  
 Delta R.T.: 0.004 min  
 Response: 33598398  
 Conc: 97.00 ng/ml



#25 AR-1248-5

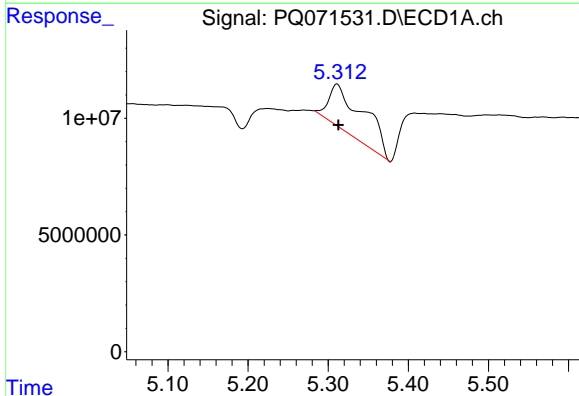
R.T.: 5.311 min  
 Delta R.T.: -0.028 min  
 Response: 59519477  
 Conc: 175.91 ng/ml

Instrument :  
 ECD\_Q  
 ClientSampleId :  
 HEXANE



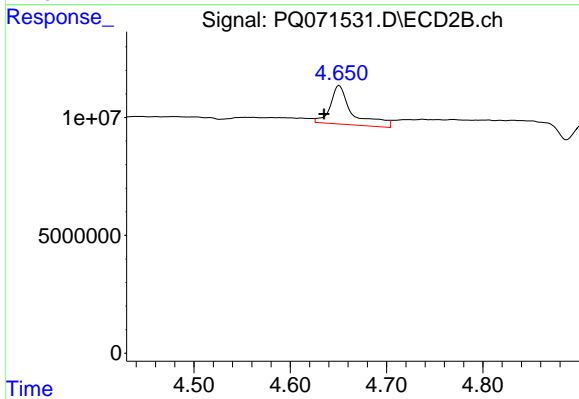
#25 AR-1248-5

R.T.: 4.651 min  
 Delta R.T.: -0.022 min  
 Response: 26130723  
 Conc: 74.95 ng/ml



#26 AR-1254-1

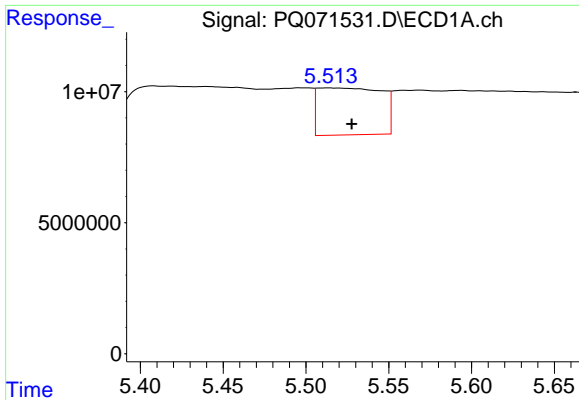
R.T.: 5.311 min  
 Delta R.T.: -0.002 min  
 Response: 59519477  
 Conc: 171.35 ng/ml



#26 AR-1254-1

R.T.: 4.651 min  
 Delta R.T.: 0.016 min  
 Response: 26130723  
 Conc: 48.76 ng/ml

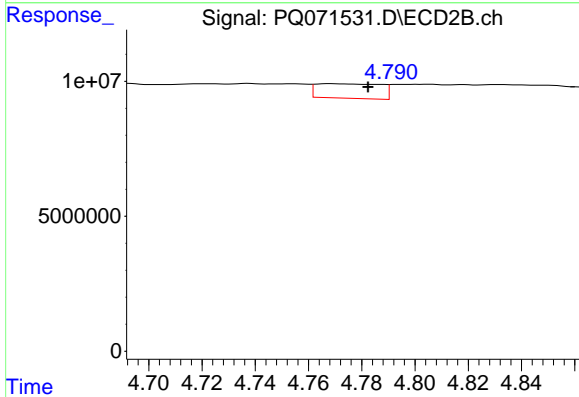




#27 AR-1254-2

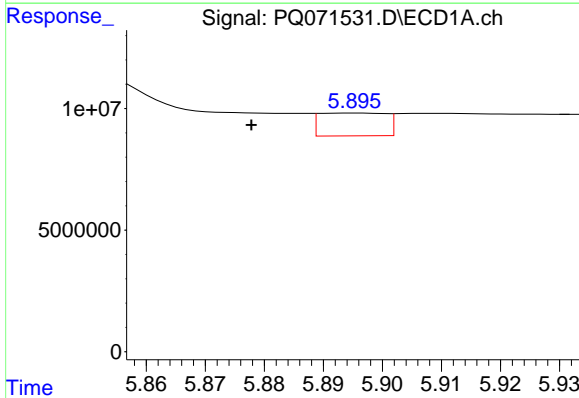
R.T.: 5.514 min  
 Delta R.T.: -0.013 min  
 Response: 47838272  
 Conc: 88.29 ng/ml

Instrument :  
 ECD\_Q  
 ClientSampleId :  
 HEXANE



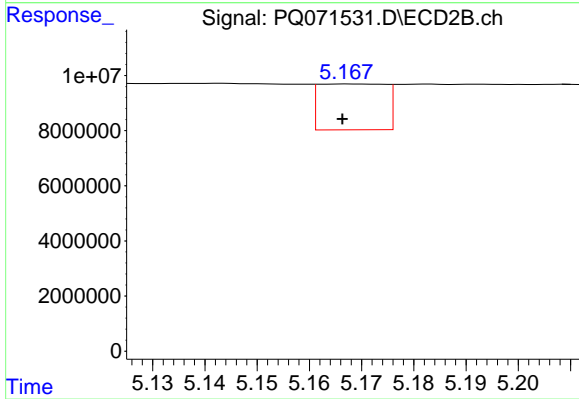
#27 AR-1254-2

R.T.: 4.769 min  
 Delta R.T.: -0.014 min  
 Response: 9031127  
 Conc: 19.69 ng/ml



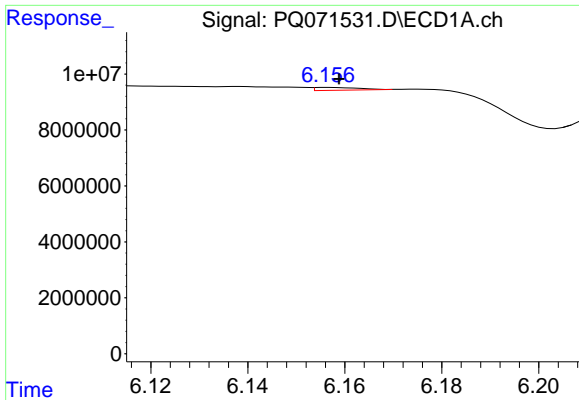
#28 AR-1254-3

R.T.: 5.895 min  
 Delta R.T.: 0.018 min  
 Response: 7318499  
 Conc: 12.71 ng/ml



#28 AR-1254-3

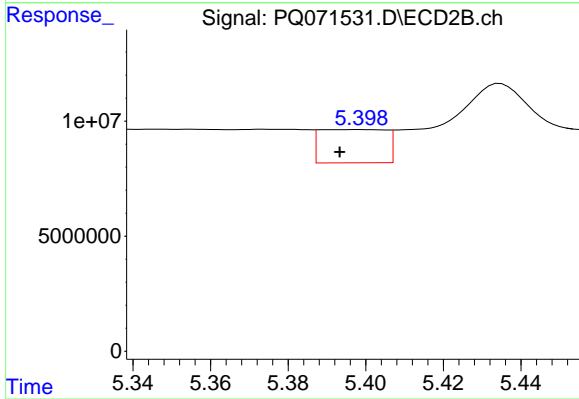
R.T.: 5.167 min  
 Delta R.T.: 0.000 min  
 Response: 14734232  
 Conc: 19.41 ng/ml



#29 AR-1254-4

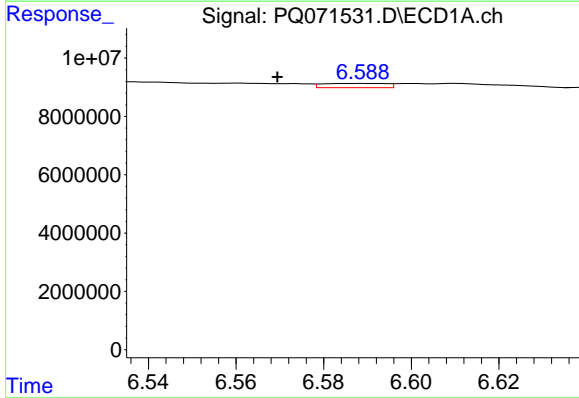
R.T.: 6.157 min  
Delta R.T.: -0.002 min  
Response: 633723  
Conc: 1.50 ng/ml

Instrument :  
ECD\_Q  
ClientSampleId :  
HEXANE



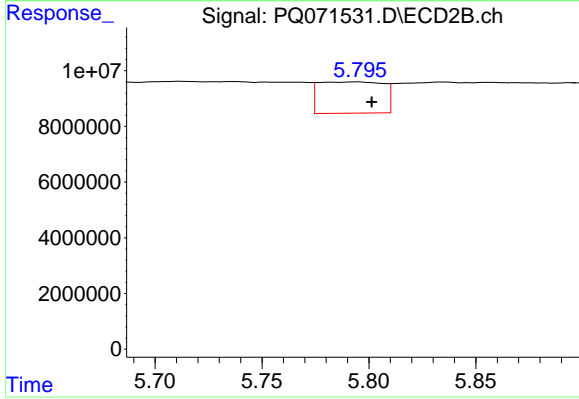
#29 AR-1254-4

R.T.: 5.399 min  
Delta R.T.: 0.006 min  
Response: 17095166  
Conc: 34.20 ng/ml



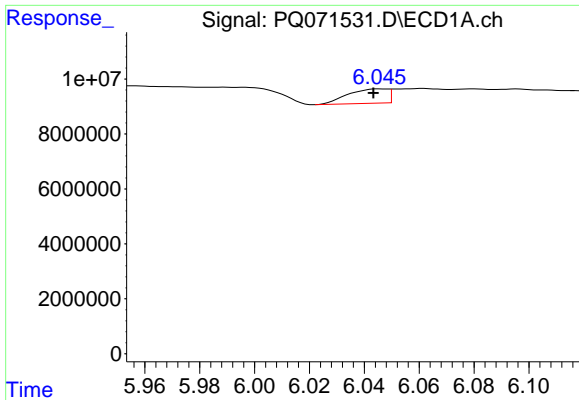
#30 AR-1254-5

R.T.: 6.589 min  
Delta R.T.: 0.020 min  
Response: 1486401  
Conc: 3.23 ng/ml



#30 AR-1254-5

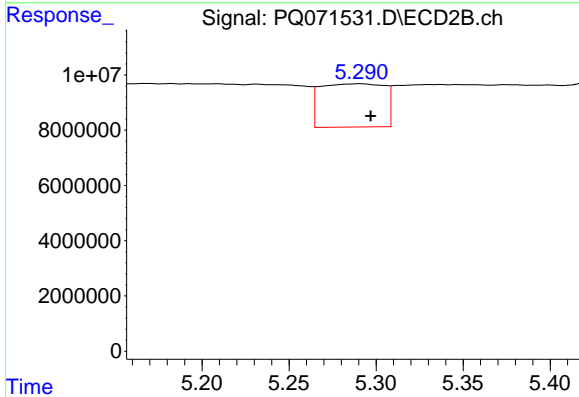
R.T.: 5.795 min  
Delta R.T.: -0.006 min  
Response: 23541665  
Conc: 34.01 ng/ml



#31 AR-1260-1

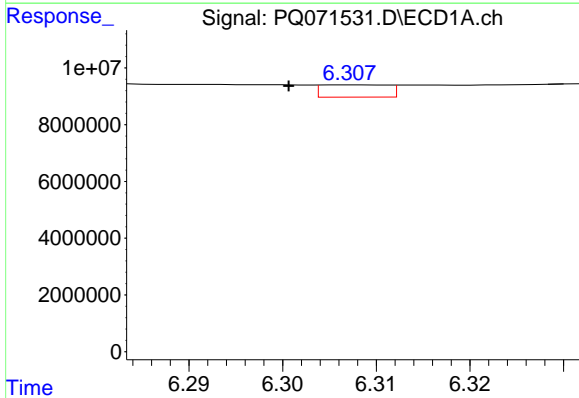
R.T.: 6.045 min  
 Delta R.T.: 0.002 min  
 Response: 5242483  
 Conc: 11.72 ng/ml

Instrument :  
 ECD\_Q  
 ClientSampleId :  
 HEXANE



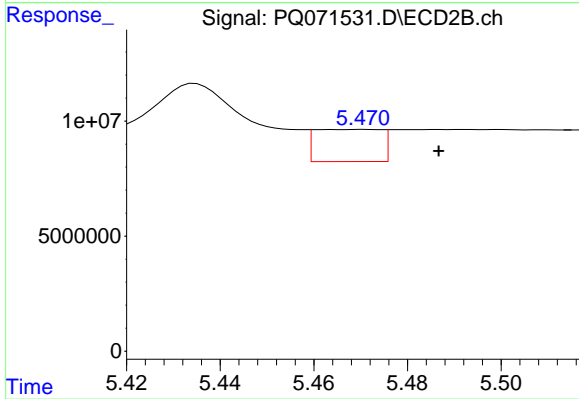
#31 AR-1260-1

R.T.: 5.291 min  
 Delta R.T.: -0.006 min  
 Response: 39995146  
 Conc: 80.16 ng/ml



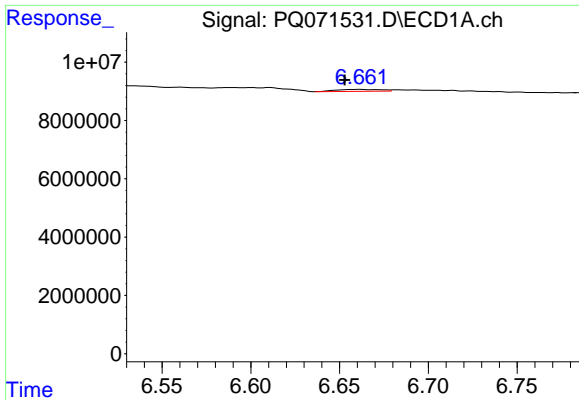
#32 AR-1260-2

R.T.: 6.308 min  
 Delta R.T.: 0.007 min  
 Response: 2147431  
 Conc: 4.20 ng/ml



#32 AR-1260-2

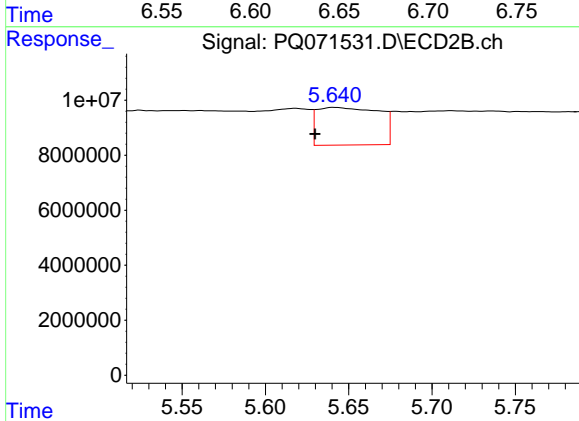
R.T.: 5.471 min  
 Delta R.T.: -0.016 min  
 Response: 13691657  
 Conc: 22.58 ng/ml



#33 AR-1260-3

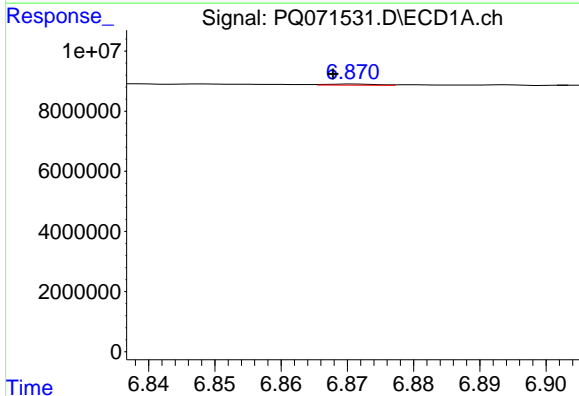
R.T.: 6.662 min  
 Delta R.T.: 0.009 min  
 Response: 1180578  
 Conc: 3.08 ng/ml

Instrument :  
 ECD\_Q  
 ClientSampleId :  
 HEXANE



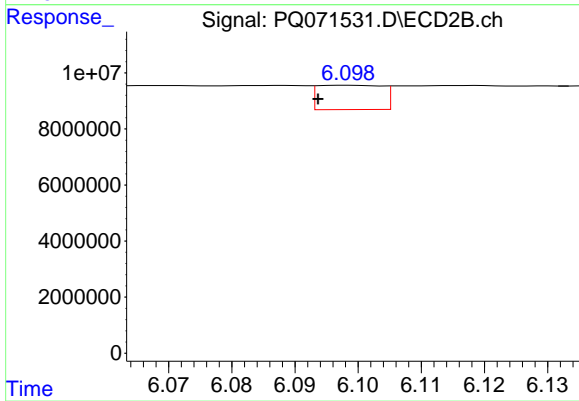
#33 AR-1260-3

R.T.: 5.641 min  
 Delta R.T.: 0.011 min  
 Response: 35494221  
 Conc: 60.04 ng/ml



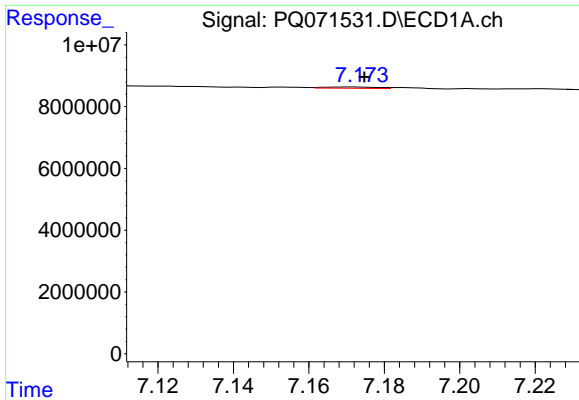
#34 AR-1260-4

R.T.: 6.871 min  
 Delta R.T.: 0.003 min  
 Response: 177392  
 Conc: 0.42 ng/ml



#34 AR-1260-4

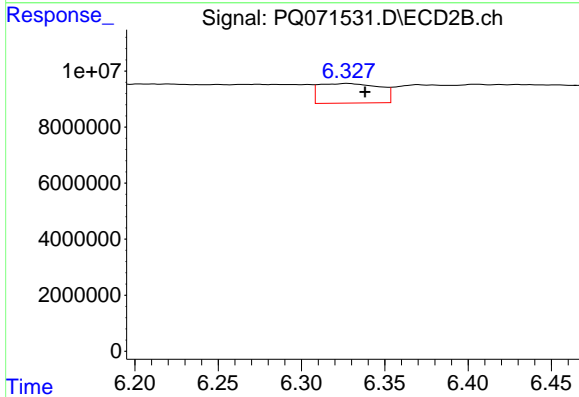
R.T.: 6.099 min  
 Delta R.T.: 0.005 min  
 Response: 6177256  
 Conc: 12.47 ng/ml



#35 AR-1260-5

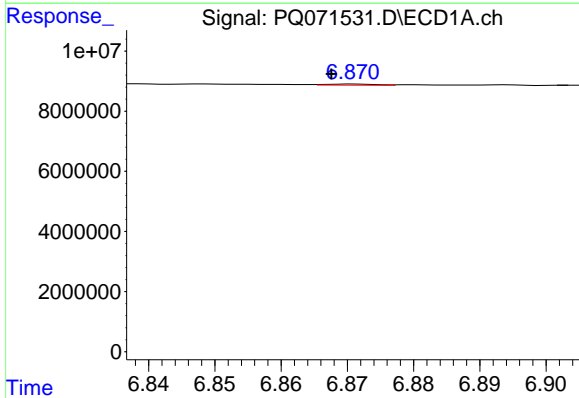
R.T.: 7.171 min  
 Delta R.T.: -0.004 min  
 Response: 392697  
 Conc: 0.47 ng/ml

Instrument :  
 ECD\_Q  
 ClientSampleId :  
 HEXANE



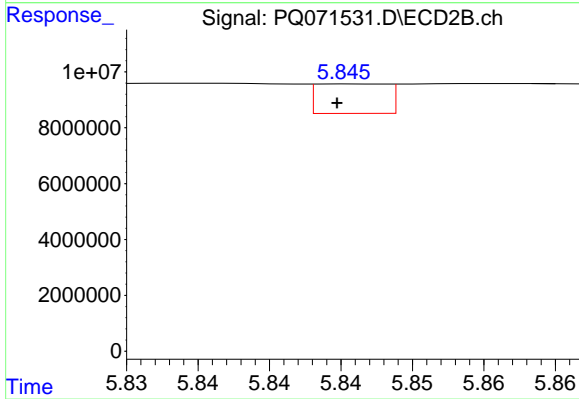
#35 AR-1260-5

R.T.: 6.328 min  
 Delta R.T.: -0.011 min  
 Response: 17635743  
 Conc: 15.36 ng/ml



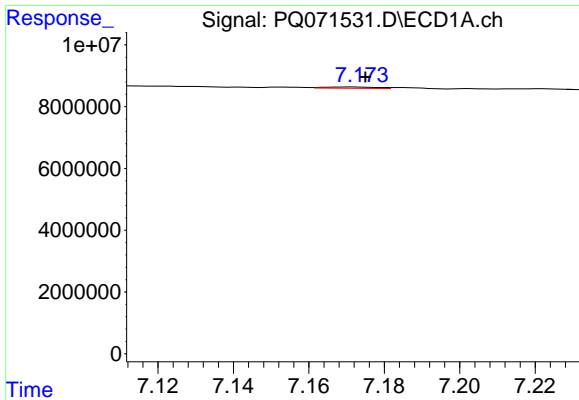
#36 AR-1262-1

R.T.: 6.871 min  
 Delta R.T.: 0.004 min  
 Response: 177392  
 Conc: 0.38 ng/ml



#36 AR-1262-1

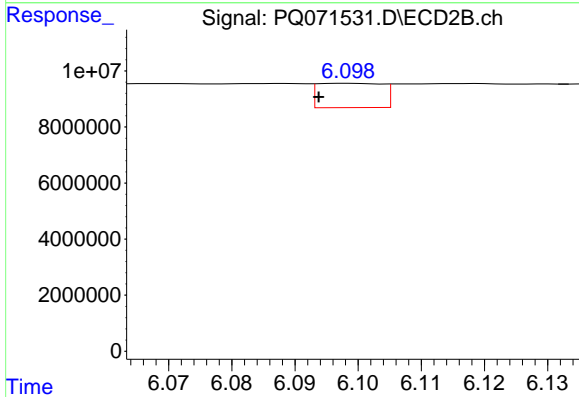
R.T.: 5.846 min  
 Delta R.T.: 0.001 min  
 Response: 3643749  
 Conc: 5.70 ng/ml



#37 AR-1262-2

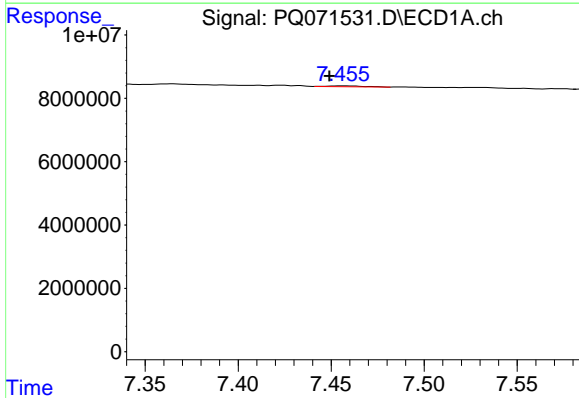
R.T.: 7.171 min  
 Delta R.T.: -0.004 min  
 Response: 392697  
 Conc: 0.46 ng/ml

Instrument :  
 ECD\_Q  
 ClientSampleId :  
 HEXANE



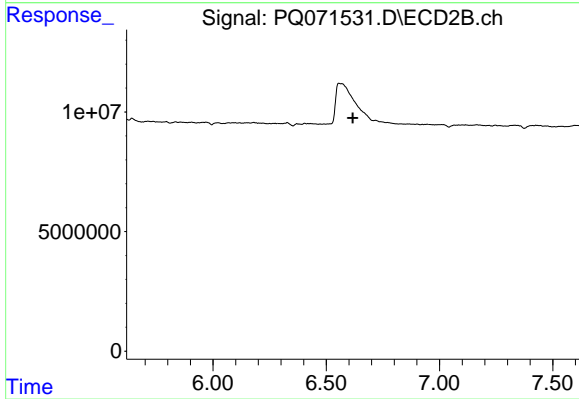
#37 AR-1262-2

R.T.: 6.099 min  
 Delta R.T.: 0.005 min  
 Response: 6177256  
 Conc: 10.39 ng/ml



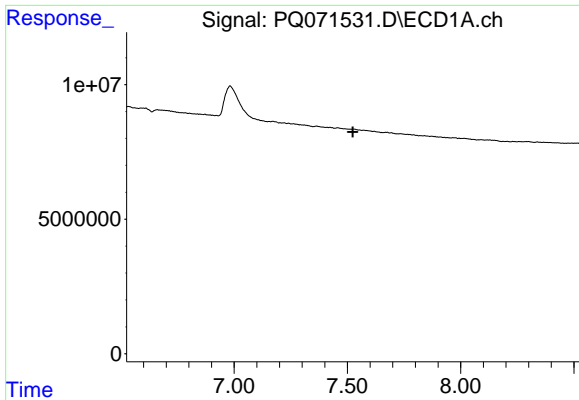
#38 AR-1262-3

R.T.: 7.456 min  
 Delta R.T.: 0.006 min  
 Response: 351195  
 Conc: 0.63 ng/ml



#38 AR-1262-3

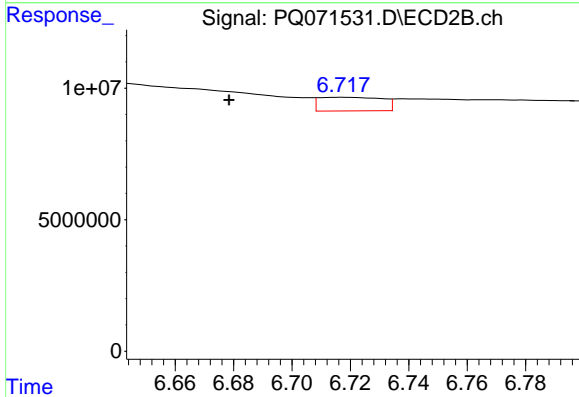
R.T.: 0.000 min  
 Exp R.T.: 6.618 min  
 Response: 0  
 Conc: N.D.



#39 AR-1262-4

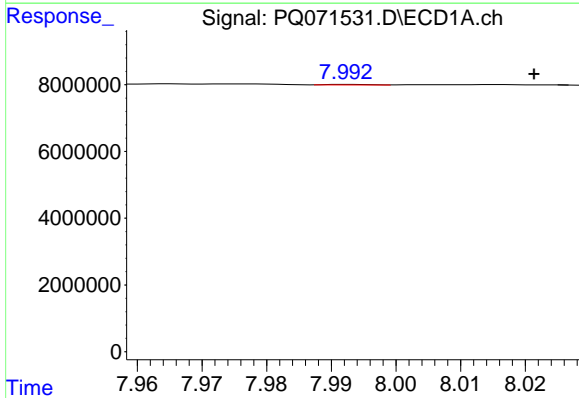
R.T.: 0.000 min  
 Exp R.T.: 7.524 min  
 Response: 0  
 Conc: N.D.

Instrument :  
 ECD\_Q  
 ClientSampleId :  
 HEXANE



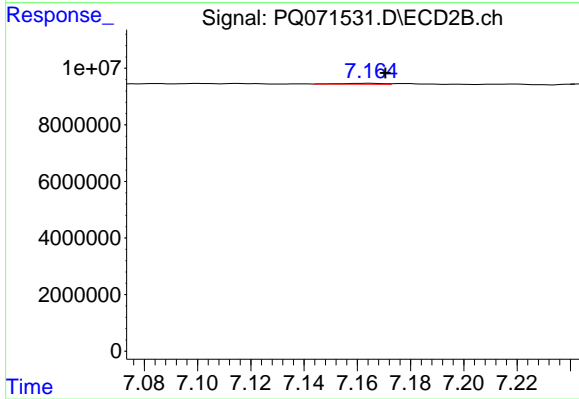
#39 AR-1262-4

R.T.: 6.717 min  
 Delta R.T.: 0.039 min  
 Response: 7818756  
 Conc: 8.74 ng/ml



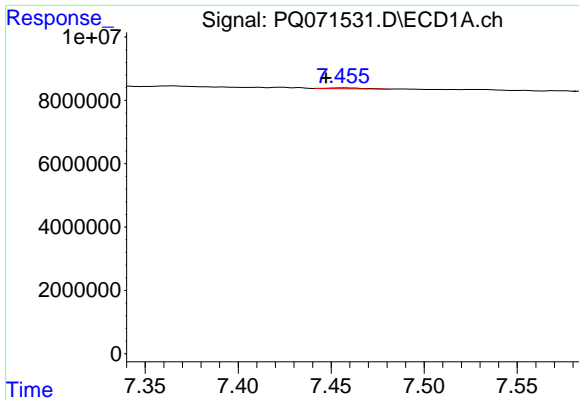
#40 AR-1262-5

R.T.: 7.993 min  
 Delta R.T.: -0.029 min  
 Response: 75783  
 Conc: 0.27 ng/ml



#40 AR-1262-5

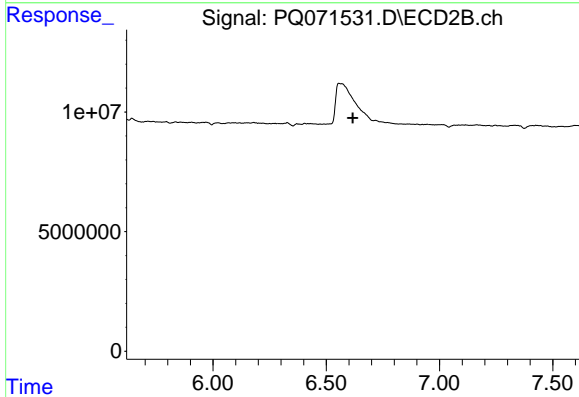
R.T.: 7.165 min  
 Delta R.T.: -0.006 min  
 Response: 350347  
 Conc: 0.82 ng/ml



#41 AR-1268-1

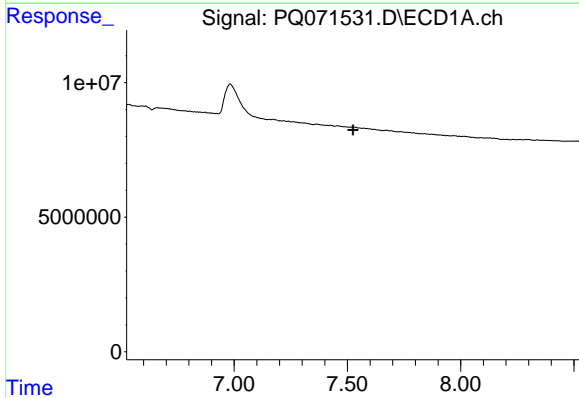
R.T.: 7.456 min  
 Delta R.T.: 0.008 min  
 Response: 351195  
 Conc: 0.34 ng/ml

Instrument : ECD\_Q  
 ClientSampleId : HEXANE



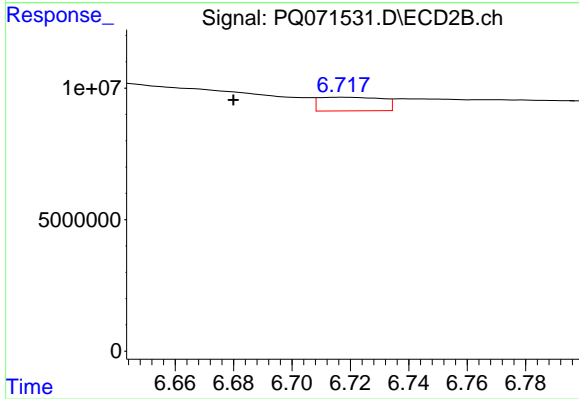
#41 AR-1268-1

R.T.: 0.000 min  
 Exp R.T. : 6.617 min  
 Response: 0  
 Conc: N.D.



#42 AR-1268-2

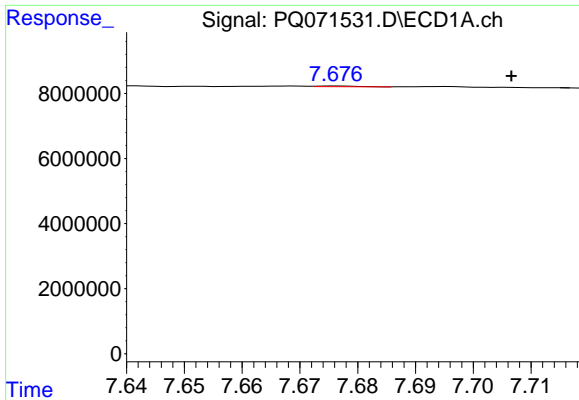
R.T.: 0.000 min  
 Exp R.T. : 7.525 min  
 Response: 0  
 Conc: N.D.



#42 AR-1268-2

R.T.: 6.717 min  
 Delta R.T.: 0.037 min  
 Response: 7818756  
 Conc: 5.80 ng/ml

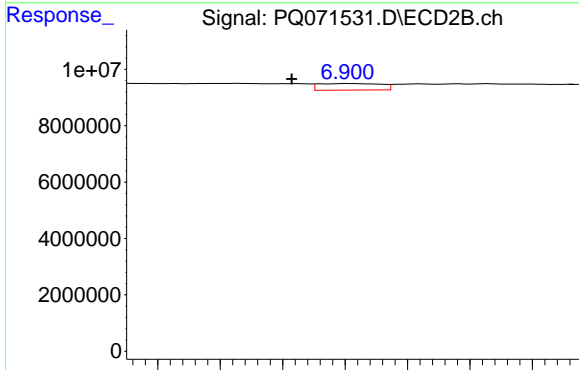




#43 AR-1268-3

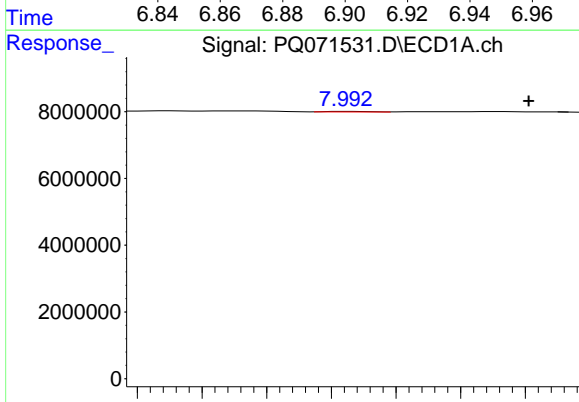
R.T.: 7.676 min  
 Delta R.T.: -0.030 min  
 Response: 102262  
 Conc: 0.13 ng/ml

Instrument :  
 ECD\_Q  
 ClientSampleId :  
 HEXANE



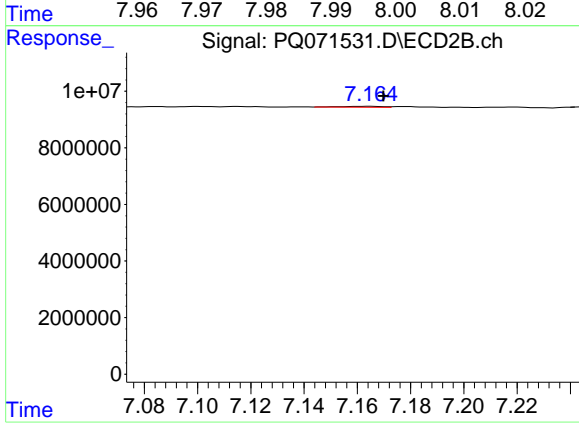
#43 AR-1268-3

R.T.: 6.901 min  
 Delta R.T.: 0.018 min  
 Response: 3219650  
 Conc: 2.83 ng/ml



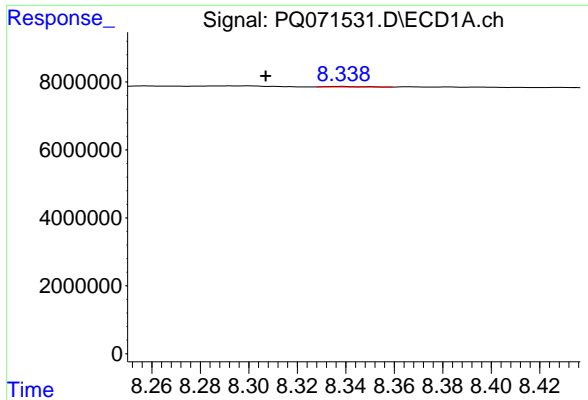
#44 AR-1268-4

R.T.: 7.993 min  
 Delta R.T.: -0.028 min  
 Response: 75783  
 Conc: 0.22 ng/ml



#44 AR-1268-4

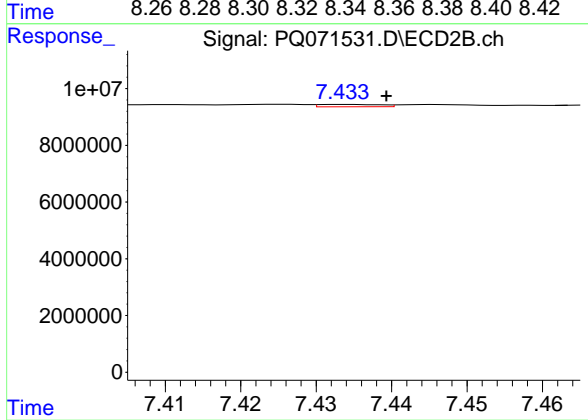
R.T.: 7.165 min  
 Delta R.T.: -0.005 min  
 Response: 350347  
 Conc: 0.69 ng/ml



#45 AR-1268-5

R.T.: 8.339 min  
Delta R.T.: 0.032 min  
Response: 143605  
Conc: 0.06 ng/ml

Instrument :  
ECD\_Q  
ClientSampleId :  
HEXANE



#45 AR-1268-5

R.T.: 7.434 min  
Delta R.T.: -0.005 min  
Response: 456451  
Conc: 0.13 ng/ml