

Data Path : Z:\pestpcbsrv\HPCHEM1\ECD_Q\Data\PQ112625\
 Data File : PQ071537.D
 Signal(s) : Signal #1: ECD1A.ch Signal #2: ECD2B.ch
 Acq On : 26 Nov 2025 14:26
 Operator : YP\AJ
 Sample : Q3719-04
 Misc :
 ALS Vial : 8 Sample Multiplier: 1

Instrument :
 ECD_Q
 ClientSampleId :
 SB-1125-11B

Integration File signal 1: autoint1.e
 Integration File signal 2: autoint2.e
 Quant Time: Nov 27 01:32:57 2025
 Quant Method : Z:\pestpcbsrv\HPCHEM1\ECD_Q\Method\PQ111825.M
 Quant Title : GC EXTRACTABLES
 QLast Update : Wed Nov 19 04:02:38 2025
 Response via : Initial Calibration
 Integrator: ChemStation

Volume Inj. : 2 µl
 Signal #1 Phase : ZB-MR1 Signal #2 Phase: ZB-MR2
 Signal #1 Info : 30Mx0.32mmx 0.50µ Signal #2 Info : 30M x 0.32mm x 0.25µm

Compound	RT#1	RT#2	Resp#1	Resp#2	ng/ml	ng/ml
System Monitoring Compounds						
1) SA Tetrachlo...	3.410	2.853	224.5E6	232.5E6	25.793	24.907
2) SA Decachlor...	8.538	7.652	149.6E6	192.3E6	23.890	21.040
Target Compounds						
3) L1 AR-1016-1	4.516	3.866	4017942	4452479	12.155	12.295
4) L1 AR-1016-2	4.516	3.882	4017942	3787087	8.448	7.710
5) L1 AR-1016-3	4.566	4.063	6306788	1913073	21.131	6.882 #
6) L1 AR-1016-4	4.688	4.117	5815619	3641592	23.684	16.239 #
7) L1 AR-1016-5	4.957	4.286	880846	4021990	3.726	14.438 #
8) L2 AR-1221-1	3.587f	3.055	9413758	1218413	86.773	10.602 #
9) L2 AR-1221-2	3.684	3.126	5112123	7006377	64.441	82.139 #
10) L2 AR-1221-3	3.772	3.201	4413015	3788165	18.115	14.652
11) L3 AR-1232-1	3.772	3.201	4413015	3788165	22.357	17.866
12) L3 AR-1232-2	4.223	3.882	3964846	3787087	38.694	17.484 #
13) L3 AR-1232-3	4.516	4.063	4017942	1913073	19.393	16.092
14) L3 AR-1232-4	4.688	4.125	5815619	4551274	56.010	48.472
15) L3 AR-1232-5	4.813	4.286	1328725	4021990	15.730	37.215 #
16) L4 AR-1242-1	4.516	3.866	4017942	4452479	15.410	15.379
17) L4 AR-1242-2	4.516	3.882	4017942	3787087	10.552	9.401
18) L4 AR-1242-3	4.566	4.063	6306788	1913073	25.928	8.179 #
19) L4 AR-1242-4	4.688	4.125	5815619	4551274	29.929	22.776
20) L4 AR-1242-5	5.342	4.634	1915477	646037	9.588	2.454 #
21) L5 AR-1248-1	4.516	3.866	4017942	4452479	21.092	20.916
22) L5 AR-1248-2	4.777	4.117	2103692	3641592	8.647	12.822 #
23) L5 AR-1248-3	4.957	4.125	880846	4551274	2.998	16.248 #
24) L5 AR-1248-4	5.296	4.286	2247353	4021990	8.549	11.611 #
25) L5 AR-1248-5	5.342	4.662	1915477	3393173	5.661	9.733 #
26) L6 AR-1254-1	5.296	4.634	2247353	646037	6.470	1.206 #
27) L6 AR-1254-2	5.501f	4.769	12309075	1452686	22.718	3.166 #
28) L6 AR-1254-3	5.876	5.176	12881298	28629128	22.370	37.705 #
29) L6 AR-1254-4	6.110f	5.404	2668209	22672876	6.315	45.362 #
30) L6 AR-1254-5	6.569	5.806	790192	12702731	1.719	18.350 #
31) L7 AR-1260-1	6.059	5.297	2362666	28623968	5.280	57.371 #
32) L7 AR-1260-2	6.285	5.484	2915553	32203714	5.707	53.109 #
33) L7 AR-1260-3	6.688f	5.634	183964	64941093	0.481	109.849 #
34) L7 AR-1260-4	6.863	6.082	680432	12465106	1.627	25.163 #
35) L7 AR-1260-5	7.172	6.330	3843983	12573833	4.619	10.950 #
36) L8 AR-1262-1	6.863	5.843	680432	14303280	1.458	22.366 #
37) L8 AR-1262-2	7.172	6.082	3843983	12465106	4.521	20.973 #
38) L8 AR-1262-3	7.452	6.635	302337	11719833	0.539	24.536 #
39) L8 AR-1262-4	0.000	6.671	0	5800897	N.D.	6.486 #
40) L8 AR-1262-5	8.024	7.167	313402	176677	1.104	0.412 #
41) L9 AR-1268-1	7.452	6.635	302337	11719833	0.296	8.139 #

Data Path : Z:\pestpcbsrv\HPCHEM1\ECD_Q\Data\PQ112625\
 Data File : PQ071537.D
 Signal(s) : Signal #1: ECD1A.ch Signal #2: ECD2B.ch
 Acq On : 26 Nov 2025 14:26
 Operator : YP\AJ
 Sample : Q3719-04
 Misc :
 ALS Vial : 8 Sample Multiplier: 1

Instrument :
 ECD_Q
 ClientSampleId :
 SB-1125-11B

Integration File signal 1: autoint1.e
 Integration File signal 2: autoint2.e
 Quant Time: Nov 27 01:32:57 2025
 Quant Method : Z:\pestpcbsrv\HPCHEM1\ECD_Q\Method\PQ111825.M
 Quant Title : GC EXTRACTABLES
 QLast Update : Wed Nov 19 04:02:38 2025
 Response via : Initial Calibration
 Integrator: ChemStation

Volume Inj. : 2 µl
 Signal #1 Phase : ZB-MR1 Signal #2 Phase: ZB-MR2
 Signal #1 Info : 30Mx0.32mmx 0.50µ Signal #2 Info : 30M x 0.32mm x 0.25µm

	Compound	RT#1	RT#2	Resp#1	Resp#2	ng/ml	ng/ml
42)	L9 AR-1268-2	0.000	6.671	0	5800897	N.D.	4.304 #
43)	L9 AR-1268-3	7.744f	6.879	578935	11445014	0.744	10.077 #
44)	L9 AR-1268-4	8.024	7.167	313402	176677	0.926	0.348 #
45)	L9 AR-1268-5	8.306	7.433	748777	2051781	0.326	0.579 #

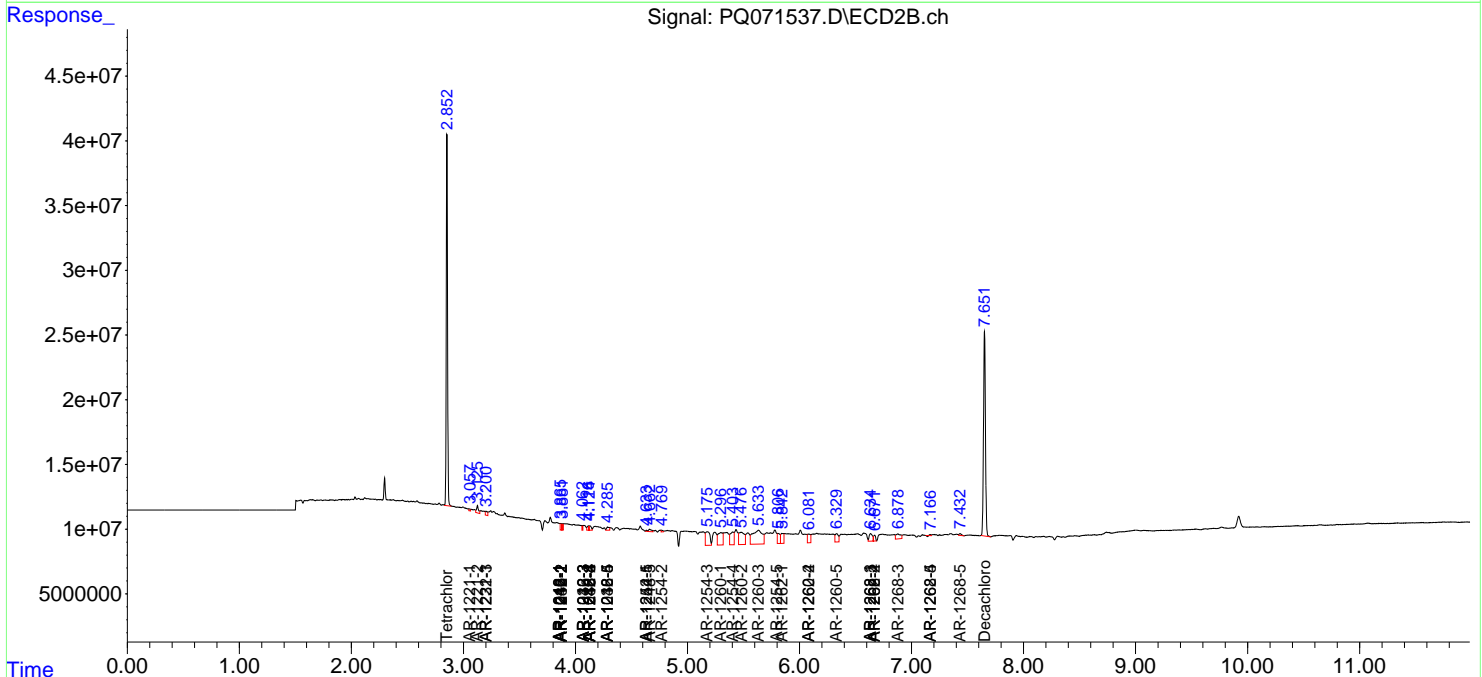
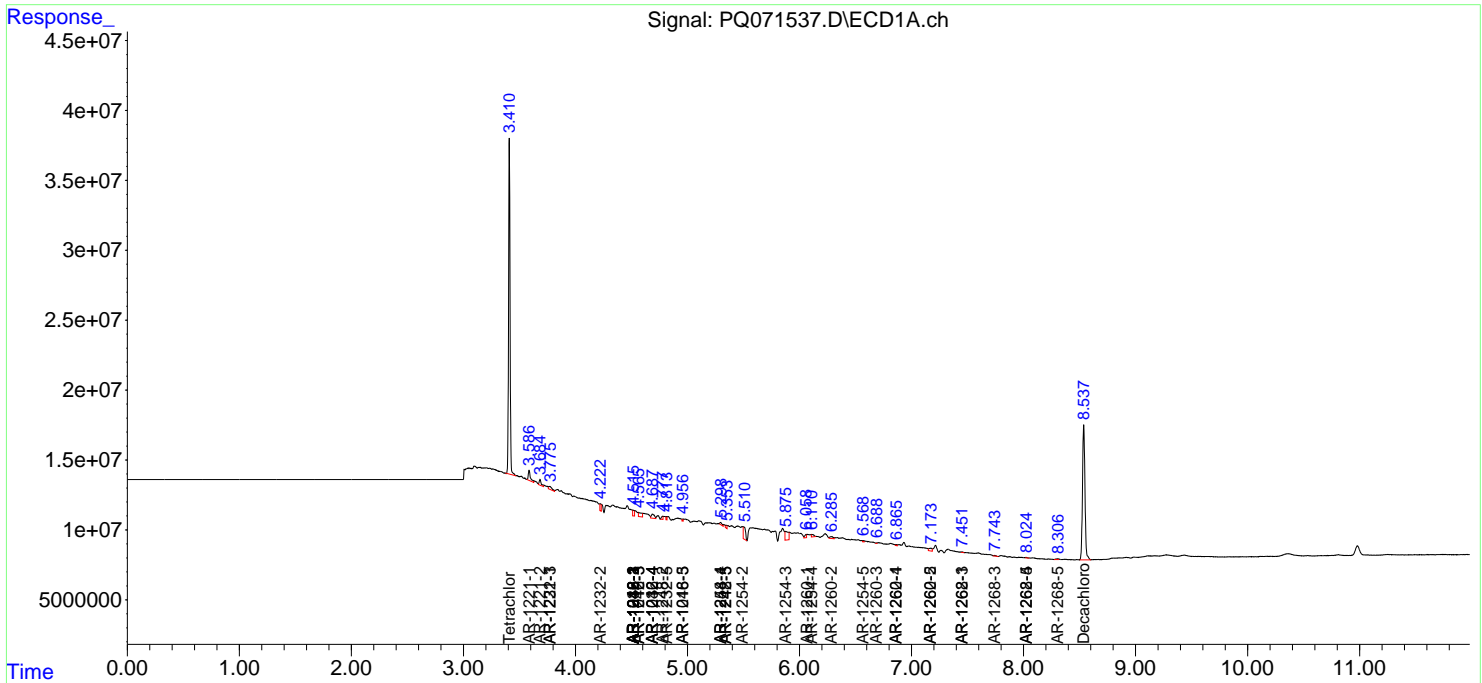
(f)=RT Delta > 1/2 Window (#)=Amounts differ by > 25% (m)=manual int.

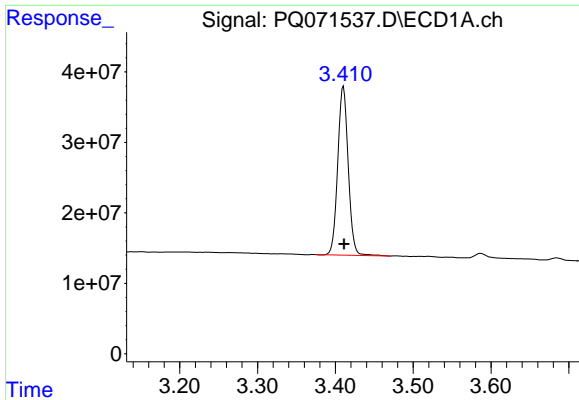
Data Path : Z:\pestpcbsrv\HPCHEM1\ECD_Q\Data\PQ112625\
 Data File : PQ071537.D
 Signal(s) : Signal #1: ECD1A.ch Signal #2: ECD2B.ch
 Acq On : 26 Nov 2025 14:26
 Operator : YP\AJ
 Sample : Q3719-04
 Misc :
 ALS Vial : 8 Sample Multiplier: 1

Instrument :
 ECD_Q
 ClientSampleId :
 SB-1125-11B

Integration File signal 1: autoint1.e
 Integration File signal 2: autoint2.e
 Quant Time: Nov 27 01:32:57 2025
 Quant Method : Z:\pestpcbsrv\HPCHEM1\ECD_Q\Method\PQ111825.M
 Quant Title : GC EXTRACTABLES
 QLast Update : Wed Nov 19 04:02:38 2025
 Response via : Initial Calibration
 Integrator: ChemStation

Volume Inj. : 2 µl
 Signal #1 Phase : ZB-MR1 Signal #2 Phase: ZB-MR2
 Signal #1 Info : 30Mx0.32mmx 0.50µ Signal #2 Info : 30M x 0.32mm x 0.25µm

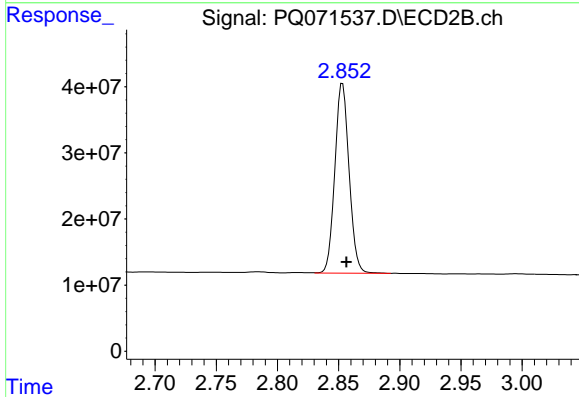




#1 Tetrachloro-m-xylene

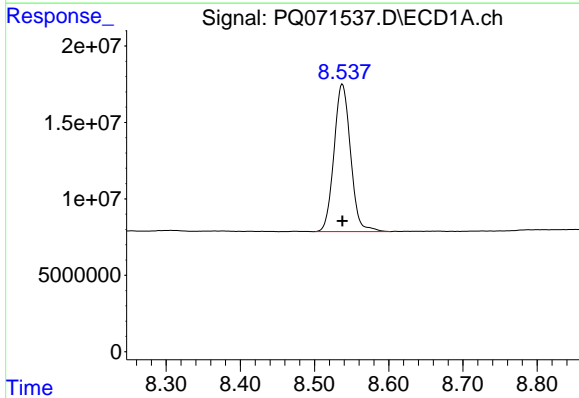
R.T.: 3.410 min
 Delta R.T.: 0.000 min
 Response: 224535367
 Conc: 25.79 ng/ml

Instrument :
 ECD_Q
 ClientSampleId :
 SB-1125-11B



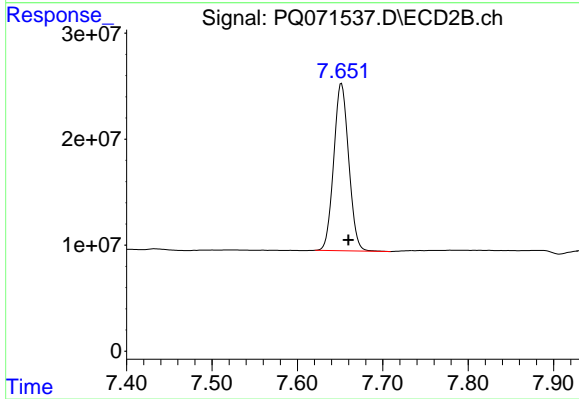
#1 Tetrachloro-m-xylene

R.T.: 2.853 min
 Delta R.T.: -0.003 min
 Response: 232547952
 Conc: 24.91 ng/ml



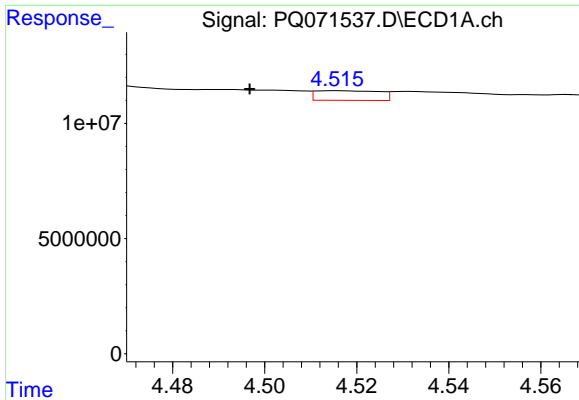
#2 Decachlorobiphenyl

R.T.: 8.538 min
 Delta R.T.: 0.000 min
 Response: 149588328
 Conc: 23.89 ng/ml



#2 Decachlorobiphenyl

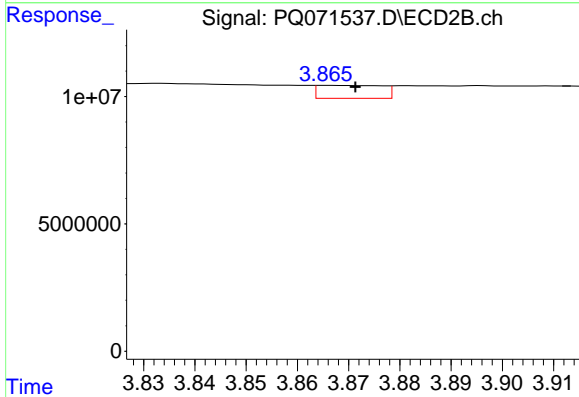
R.T.: 7.652 min
 Delta R.T.: -0.008 min
 Response: 192260667
 Conc: 21.04 ng/ml



#3 AR-1016-1

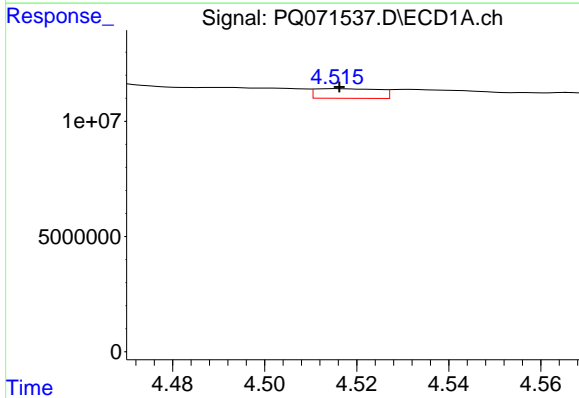
R.T.: 4.516 min
 Delta R.T.: 0.019 min
 Response: 4017942
 Conc: 12.16 ng/ml

Instrument :
 ECD_Q
 ClientSampleId :
 SB-1125-11B



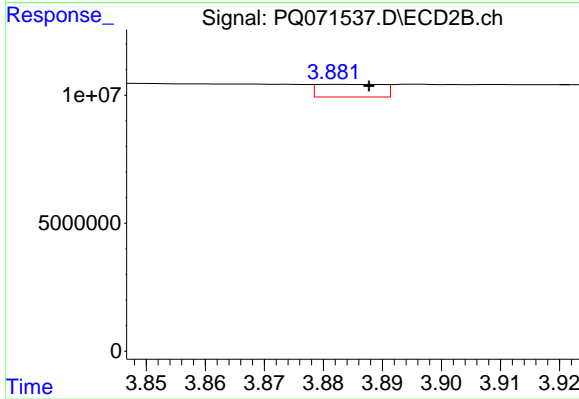
#3 AR-1016-1

R.T.: 3.866 min
 Delta R.T.: -0.005 min
 Response: 4452479
 Conc: 12.30 ng/ml



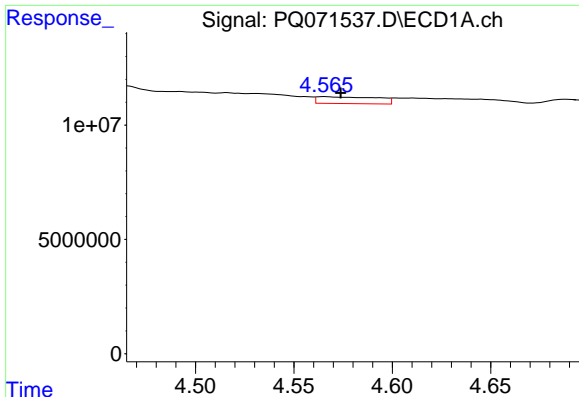
#4 AR-1016-2

R.T.: 4.516 min
 Delta R.T.: 0.000 min
 Response: 4017942
 Conc: 8.45 ng/ml



#4 AR-1016-2

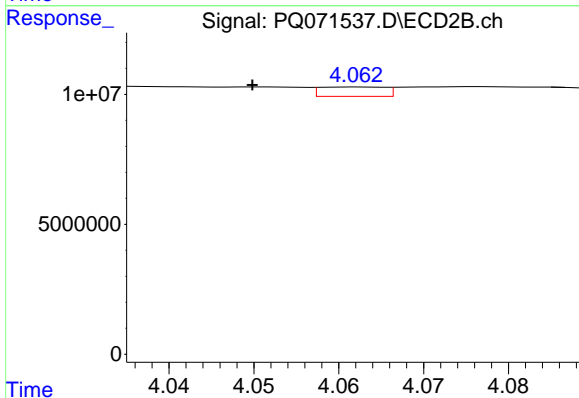
R.T.: 3.882 min
 Delta R.T.: -0.006 min
 Response: 3787087
 Conc: 7.71 ng/ml



#5 AR-1016-3

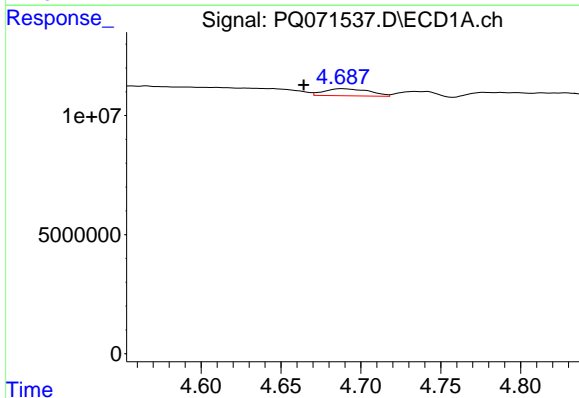
R.T.: 4.566 min
 Delta R.T.: -0.008 min
 Response: 6306788
 Conc: 21.13 ng/ml

Instrument :
 ECD_Q
 ClientSampleId :
 SB-1125-11B



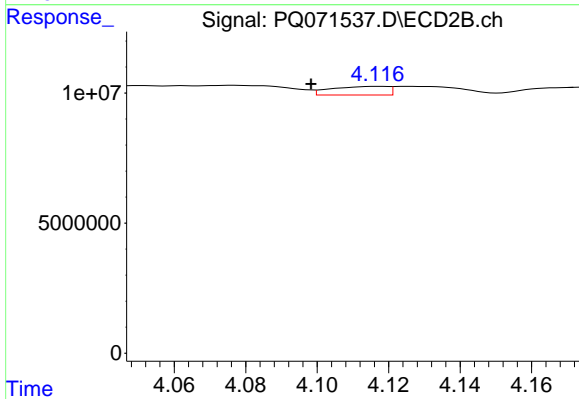
#5 AR-1016-3

R.T.: 4.063 min
 Delta R.T.: 0.013 min
 Response: 1913073
 Conc: 6.88 ng/ml



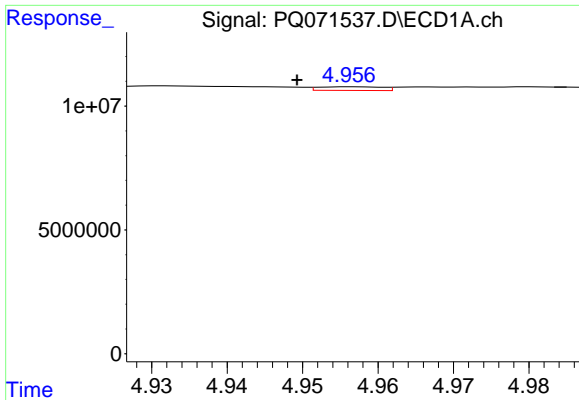
#6 AR-1016-4

R.T.: 4.688 min
 Delta R.T.: 0.024 min
 Response: 5815619
 Conc: 23.68 ng/ml



#6 AR-1016-4

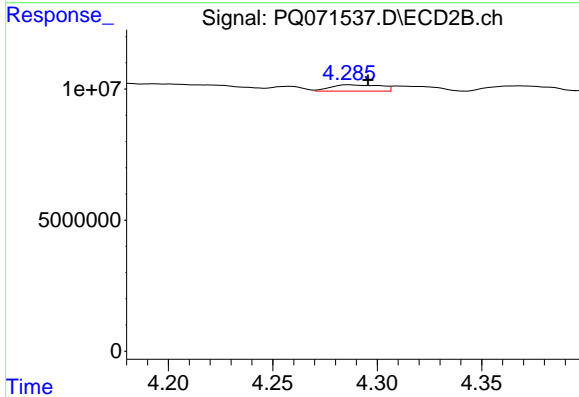
R.T.: 4.117 min
 Delta R.T.: 0.019 min
 Response: 3641592
 Conc: 16.24 ng/ml



#7 AR-1016-5

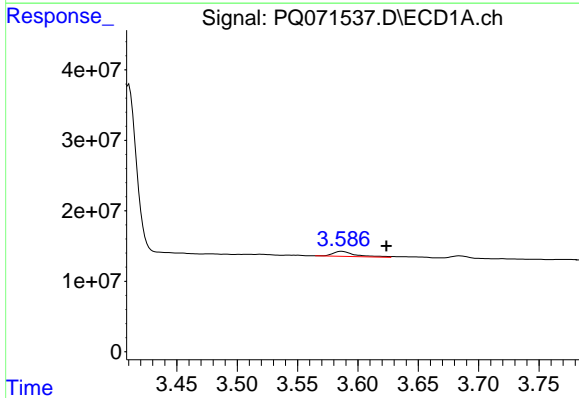
R.T.: 4.957 min
 Delta R.T.: 0.007 min
 Response: 880846
 Conc: 3.73 ng/ml

Instrument :
 ECD_Q
 ClientSampleId :
 SB-1125-11B



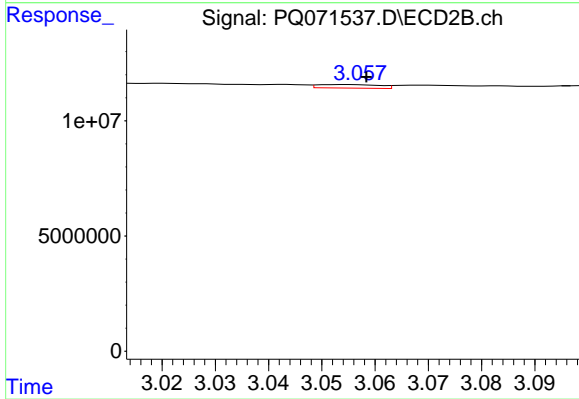
#7 AR-1016-5

R.T.: 4.286 min
 Delta R.T.: -0.010 min
 Response: 4021990
 Conc: 14.44 ng/ml



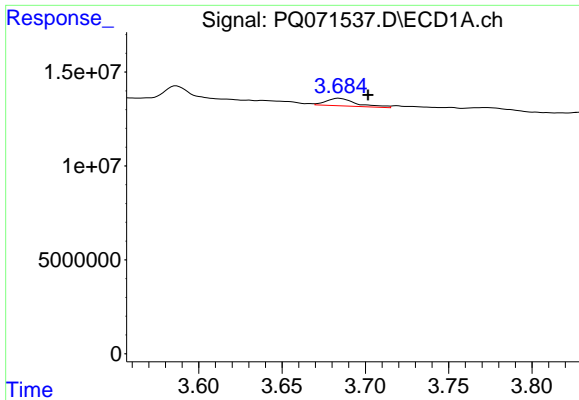
#8 AR-1221-1

R.T.: 3.587 min
 Delta R.T.: -0.037 min
 Response: 9413758
 Conc: 86.77 ng/ml



#8 AR-1221-1

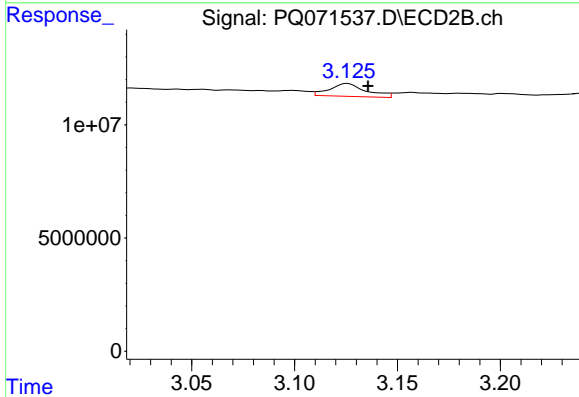
R.T.: 3.055 min
 Delta R.T.: -0.003 min
 Response: 1218413
 Conc: 10.60 ng/ml



#9 AR-1221-2

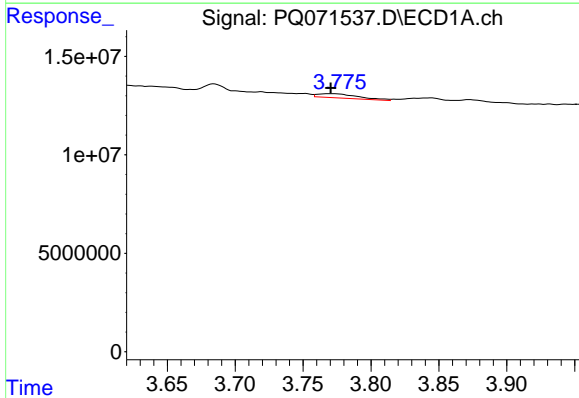
R.T.: 3.684 min
 Delta R.T.: -0.018 min
 Response: 5112123
 Conc: 64.44 ng/ml

Instrument :
 ECD_Q
 ClientSampleId :
 SB-1125-11B



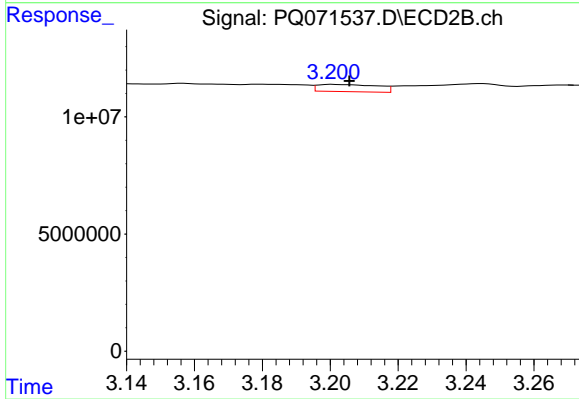
#9 AR-1221-2

R.T.: 3.126 min
 Delta R.T.: -0.010 min
 Response: 7006377
 Conc: 82.14 ng/ml



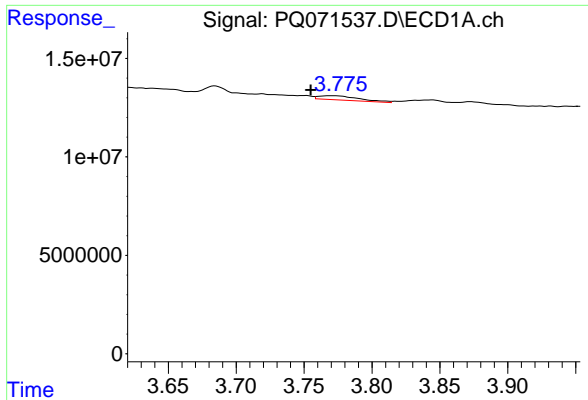
#10 AR-1221-3

R.T.: 3.772 min
 Delta R.T.: 0.002 min
 Response: 4413015
 Conc: 18.11 ng/ml



#10 AR-1221-3

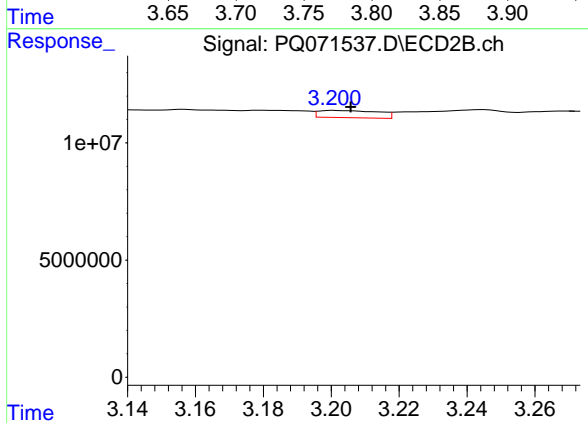
R.T.: 3.201 min
 Delta R.T.: -0.005 min
 Response: 3788165
 Conc: 14.65 ng/ml



#11 AR-1232-1

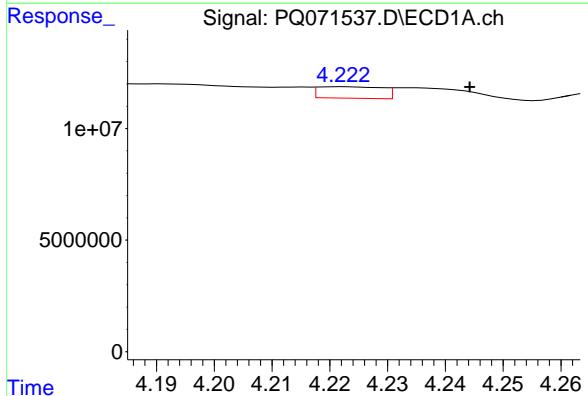
R.T.: 3.772 min
 Delta R.T.: 0.017 min
 Response: 4413015
 Conc: 22.36 ng/ml

Instrument :
 ECD_Q
 ClientSampleId :
 SB-1125-11B



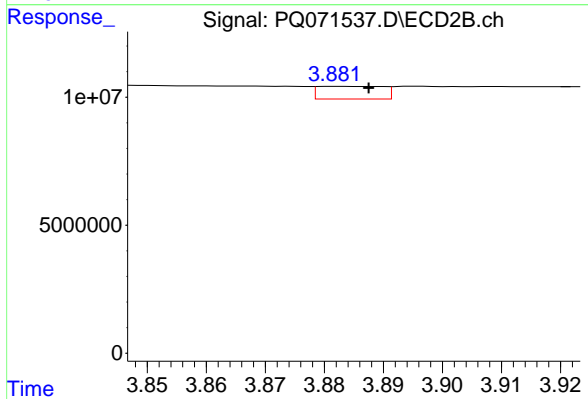
#11 AR-1232-1

R.T.: 3.201 min
 Delta R.T.: -0.005 min
 Response: 3788165
 Conc: 17.87 ng/ml



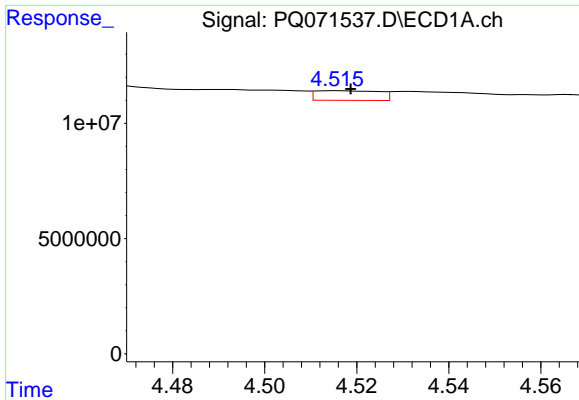
#12 AR-1232-2

R.T.: 4.223 min
 Delta R.T.: -0.022 min
 Response: 3964846
 Conc: 38.69 ng/ml



#12 AR-1232-2

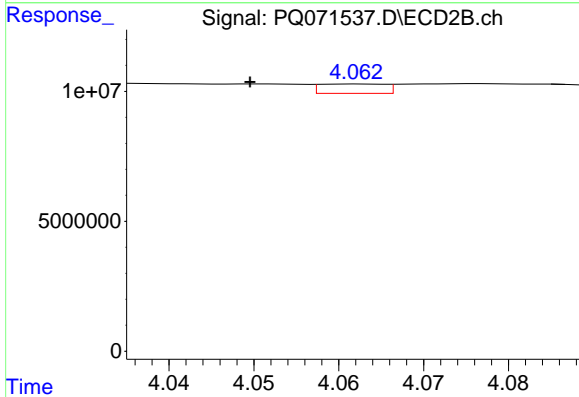
R.T.: 3.882 min
 Delta R.T.: -0.006 min
 Response: 3787087
 Conc: 17.48 ng/ml



#13 AR-1232-3

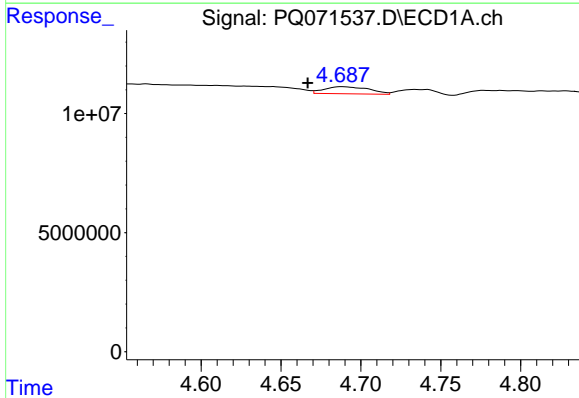
R.T.: 4.516 min
 Delta R.T.: -0.003 min
 Response: 4017942
 Conc: 19.39 ng/ml

Instrument :
 ECD_Q
 ClientSampleId :
 SB-1125-11B



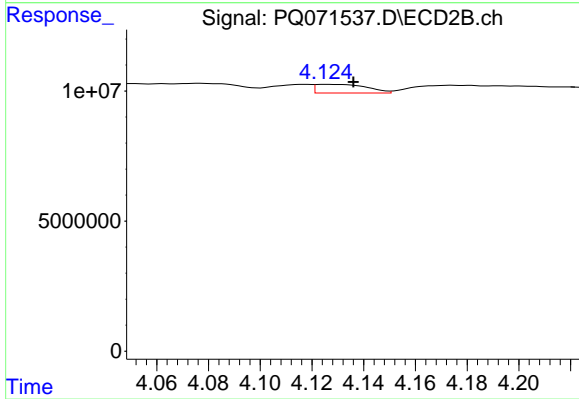
#13 AR-1232-3

R.T.: 4.063 min
 Delta R.T.: 0.013 min
 Response: 1913073
 Conc: 16.09 ng/ml



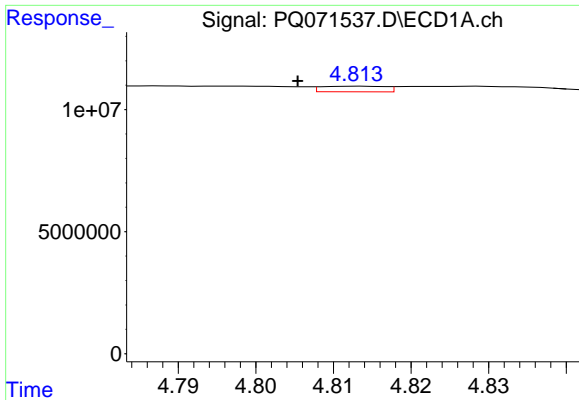
#14 AR-1232-4

R.T.: 4.688 min
 Delta R.T.: 0.021 min
 Response: 5815619
 Conc: 56.01 ng/ml



#14 AR-1232-4

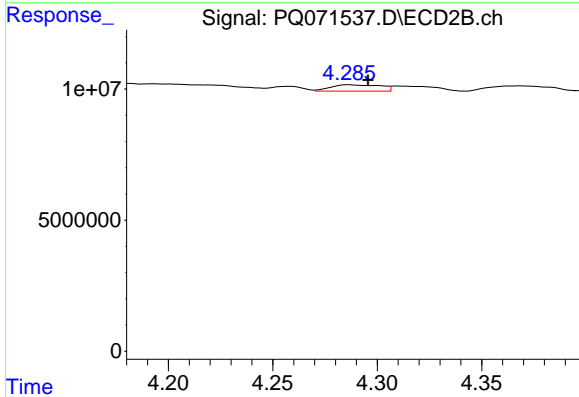
R.T.: 4.125 min
 Delta R.T.: -0.011 min
 Response: 4551274
 Conc: 48.47 ng/ml



#15 AR-1232-5

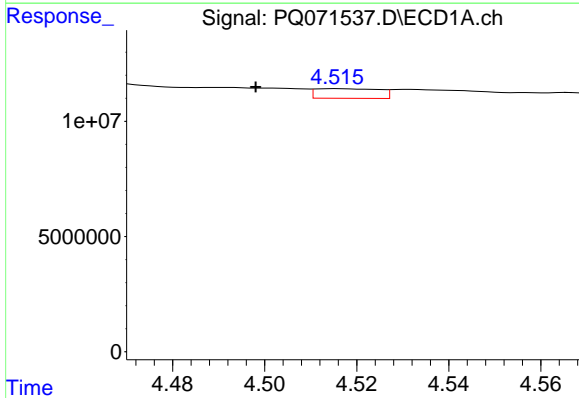
R.T.: 4.813 min
 Delta R.T.: 0.008 min
 Response: 1328725
 Conc: 15.73 ng/ml

Instrument :
 ECD_Q
 ClientSampleId :
 SB-1125-11B



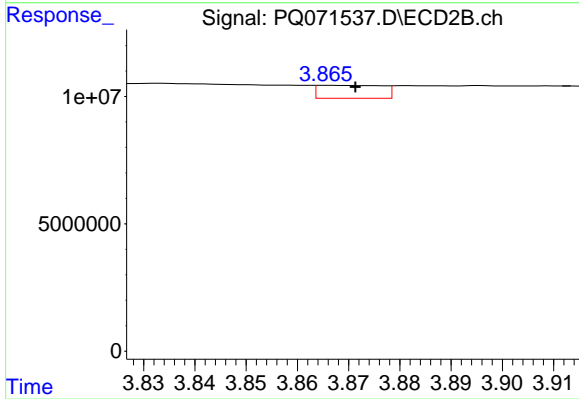
#15 AR-1232-5

R.T.: 4.286 min
 Delta R.T.: -0.010 min
 Response: 4021990
 Conc: 37.22 ng/ml



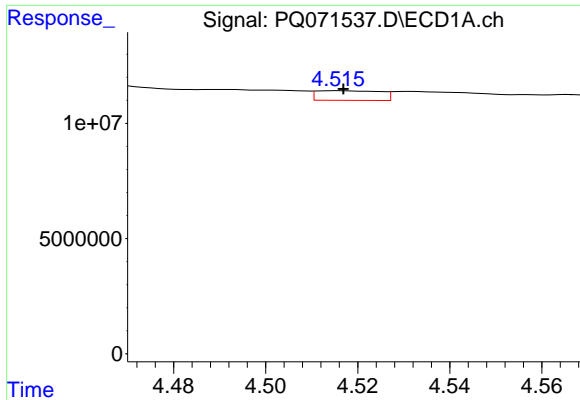
#16 AR-1242-1

R.T.: 4.516 min
 Delta R.T.: 0.018 min
 Response: 4017942
 Conc: 15.41 ng/ml



#16 AR-1242-1

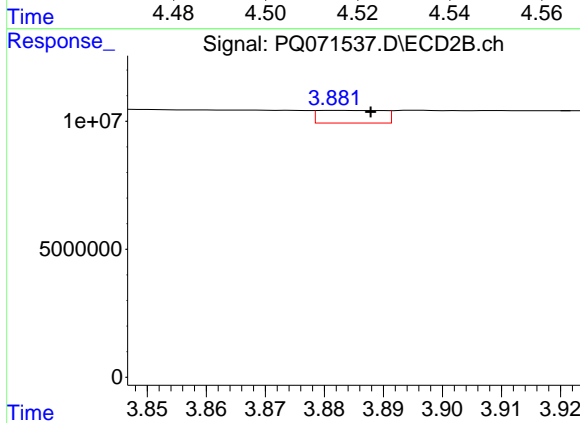
R.T.: 3.866 min
 Delta R.T.: -0.005 min
 Response: 4452479
 Conc: 15.38 ng/ml



#17 AR-1242-2

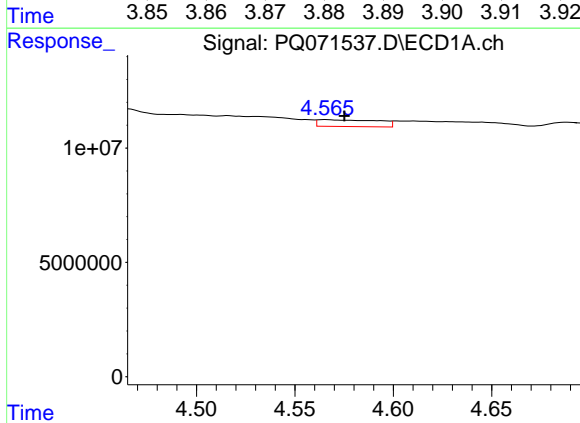
R.T.: 4.516 min
 Delta R.T.: -0.001 min
 Response: 4017942
 Conc: 10.55 ng/ml

Instrument :
 ECD_Q
 ClientSampleId :
 SB-1125-11B



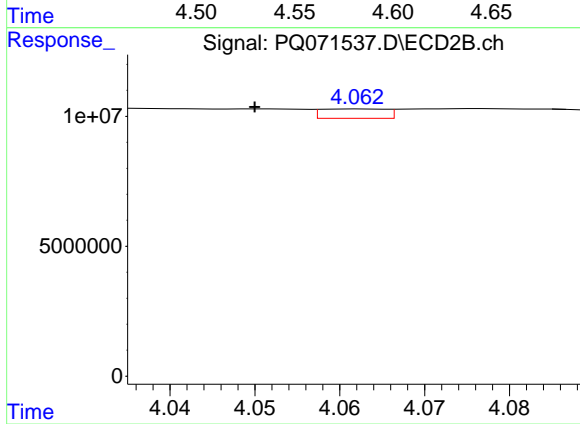
#17 AR-1242-2

R.T.: 3.882 min
 Delta R.T.: -0.006 min
 Response: 3787087
 Conc: 9.40 ng/ml



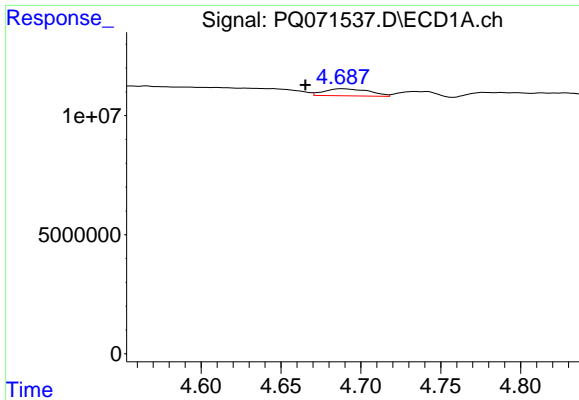
#18 AR-1242-3

R.T.: 4.566 min
 Delta R.T.: -0.009 min
 Response: 6306788
 Conc: 25.93 ng/ml



#18 AR-1242-3

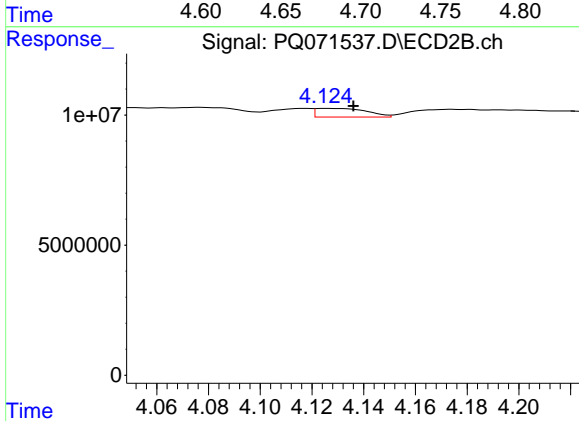
R.T.: 4.063 min
 Delta R.T.: 0.013 min
 Response: 1913073
 Conc: 8.18 ng/ml



#19 AR-1242-4

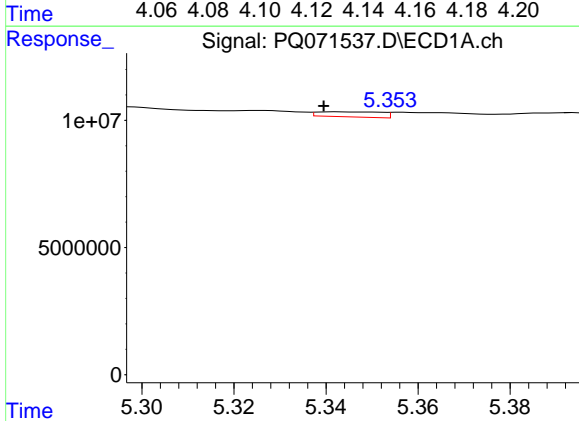
R.T.: 4.688 min
 Delta R.T.: 0.022 min
 Response: 5815619
 Conc: 29.93 ng/ml

Instrument :
 ECD_Q
 ClientSampleId :
 SB-1125-11B



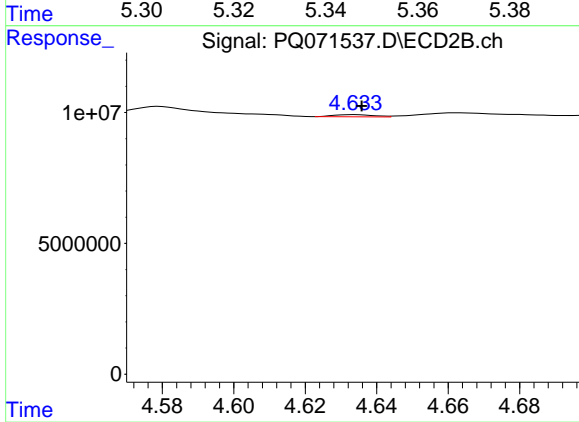
#19 AR-1242-4

R.T.: 4.125 min
 Delta R.T.: -0.011 min
 Response: 4551274
 Conc: 22.78 ng/ml



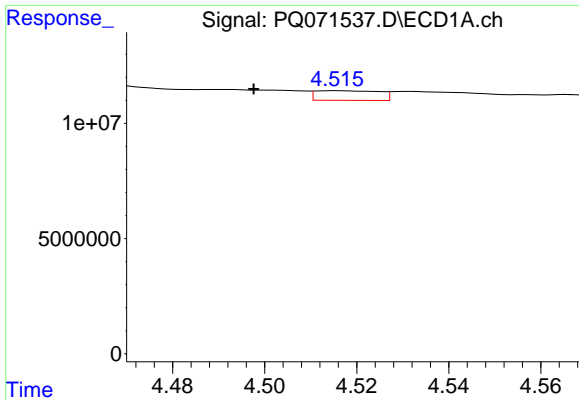
#20 AR-1242-5

R.T.: 5.342 min
 Delta R.T.: 0.003 min
 Response: 1915477
 Conc: 9.59 ng/ml



#20 AR-1242-5

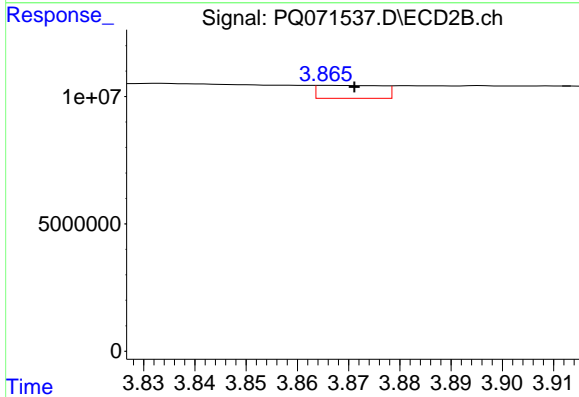
R.T.: 4.634 min
 Delta R.T.: -0.002 min
 Response: 646037
 Conc: 2.45 ng/ml



#21 AR-1248-1

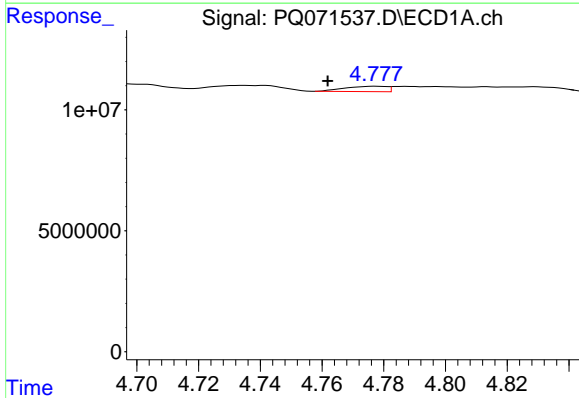
R.T.: 4.516 min
 Delta R.T.: 0.018 min
 Response: 4017942
 Conc: 21.09 ng/ml

Instrument :
 ECD_Q
 ClientSampleId :
 SB-1125-11B



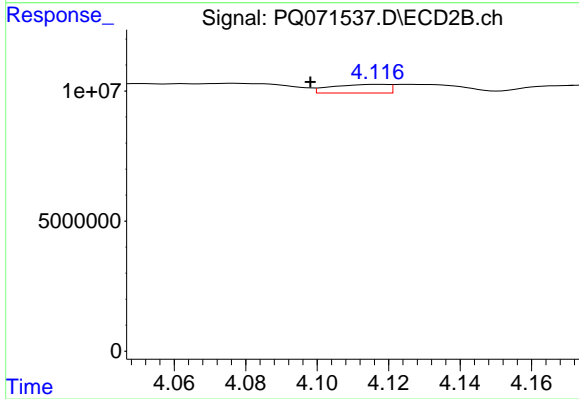
#21 AR-1248-1

R.T.: 3.866 min
 Delta R.T.: -0.005 min
 Response: 4452479
 Conc: 20.92 ng/ml



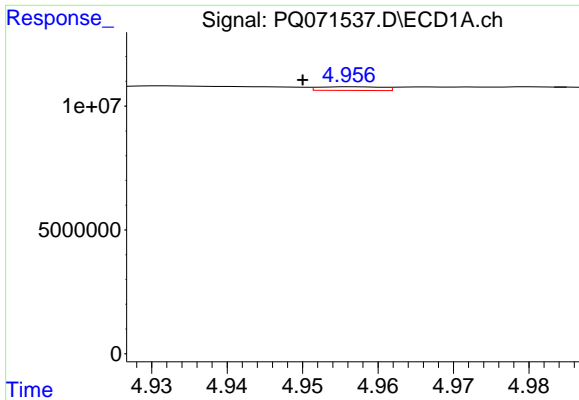
#22 AR-1248-2

R.T.: 4.777 min
 Delta R.T.: 0.015 min
 Response: 2103692
 Conc: 8.65 ng/ml



#22 AR-1248-2

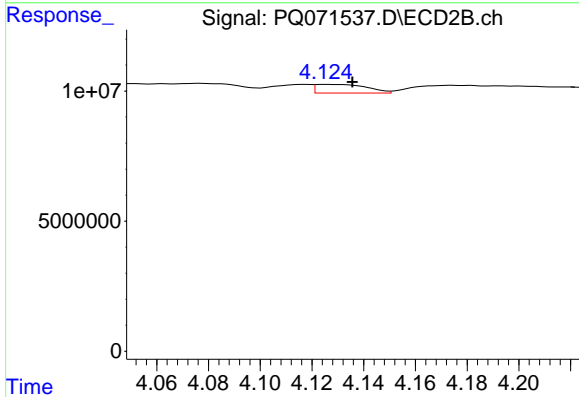
R.T.: 4.117 min
 Delta R.T.: 0.019 min
 Response: 3641592
 Conc: 12.82 ng/ml



#23 AR-1248-3

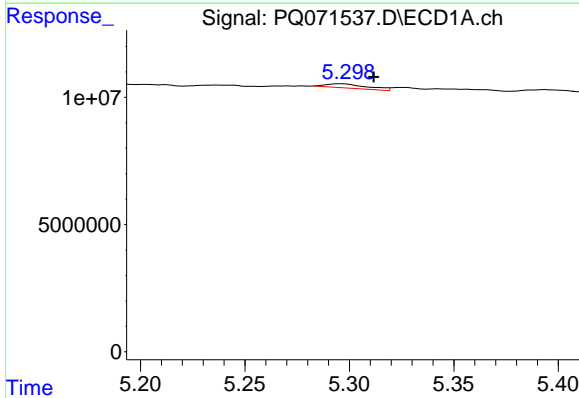
R.T.: 4.957 min
 Delta R.T.: 0.007 min
 Response: 880846
 Conc: 3.00 ng/ml

Instrument :
 ECD_Q
 ClientSampleId :
 SB-1125-11B



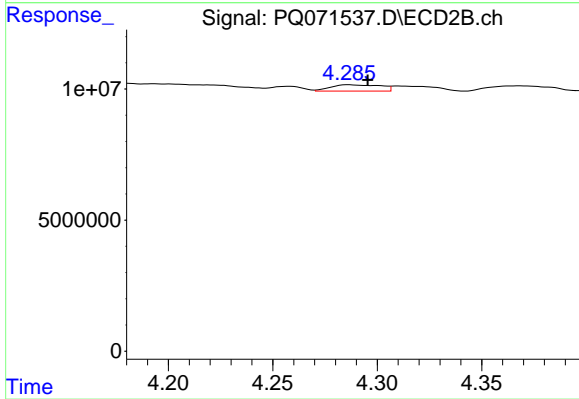
#23 AR-1248-3

R.T.: 4.125 min
 Delta R.T.: -0.011 min
 Response: 4551274
 Conc: 16.25 ng/ml



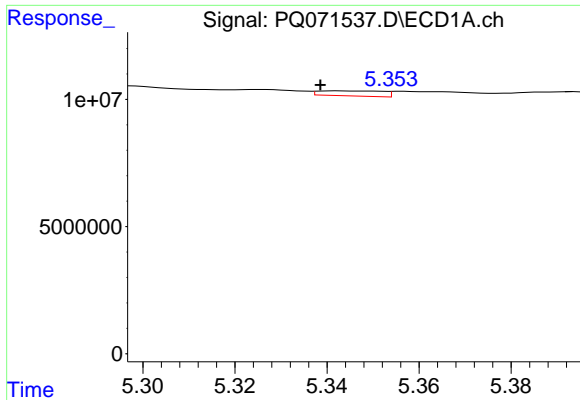
#24 AR-1248-4

R.T.: 5.296 min
 Delta R.T.: -0.015 min
 Response: 2247353
 Conc: 8.55 ng/ml



#24 AR-1248-4

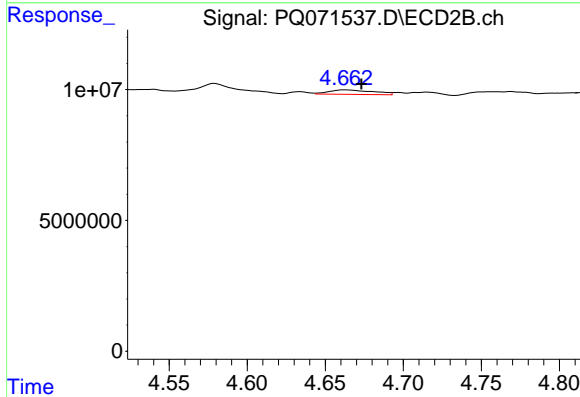
R.T.: 4.286 min
 Delta R.T.: -0.009 min
 Response: 4021990
 Conc: 11.61 ng/ml



#25 AR-1248-5

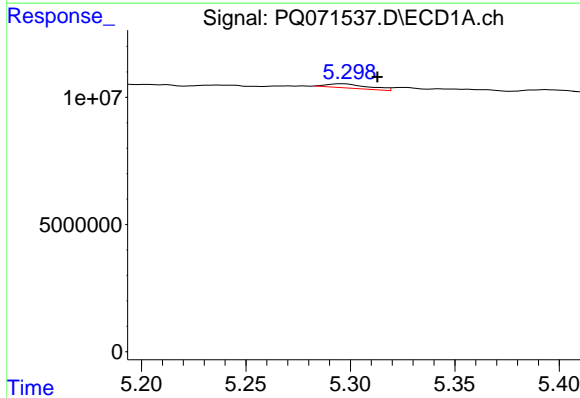
R.T.: 5.342 min
 Delta R.T.: 0.004 min
 Response: 1915477
 Conc: 5.66 ng/ml

Instrument :
 ECD_Q
 ClientSampleId :
 SB-1125-11B



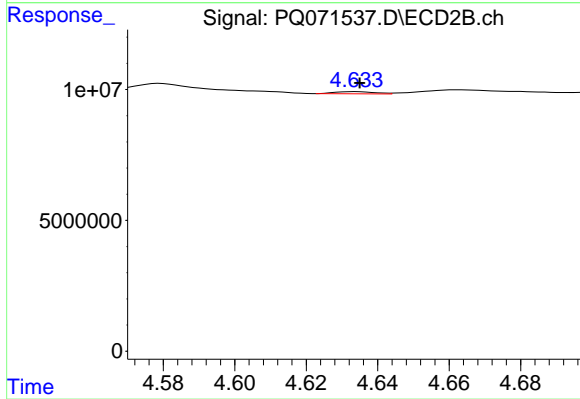
#25 AR-1248-5

R.T.: 4.662 min
 Delta R.T.: -0.011 min
 Response: 3393173
 Conc: 9.73 ng/ml



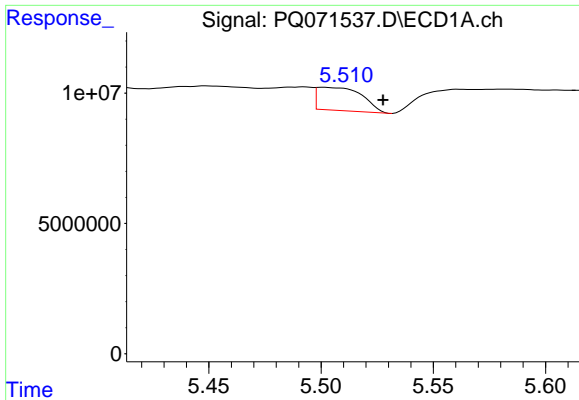
#26 AR-1254-1

R.T.: 5.296 min
 Delta R.T.: -0.016 min
 Response: 2247353
 Conc: 6.47 ng/ml



#26 AR-1254-1

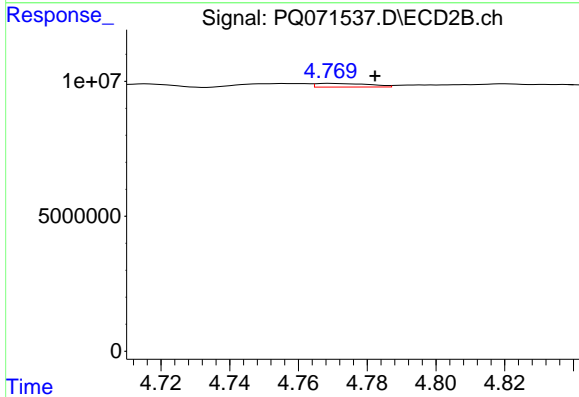
R.T.: 4.634 min
 Delta R.T.: -0.001 min
 Response: 646037
 Conc: 1.21 ng/ml



#27 AR-1254-2

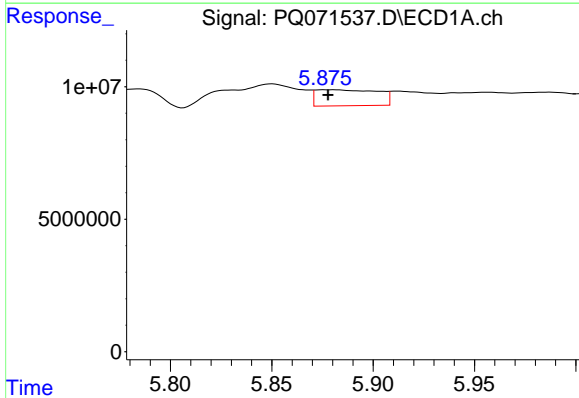
R.T.: 5.501 min
 Delta R.T.: -0.026 min
 Response: 12309075
 Conc: 22.72 ng/ml

Instrument :
 ECD_Q
 ClientSampleId :
 SB-1125-11B



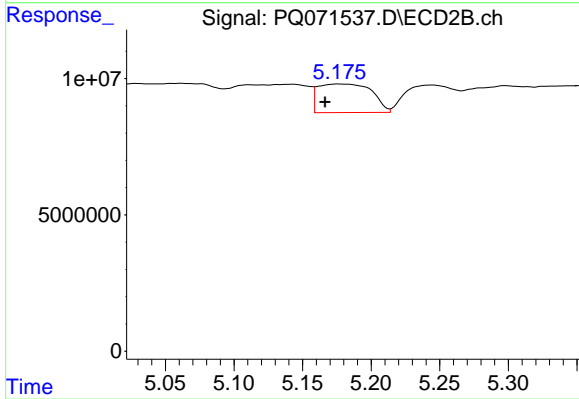
#27 AR-1254-2

R.T.: 4.769 min
 Delta R.T.: -0.013 min
 Response: 1452686
 Conc: 3.17 ng/ml



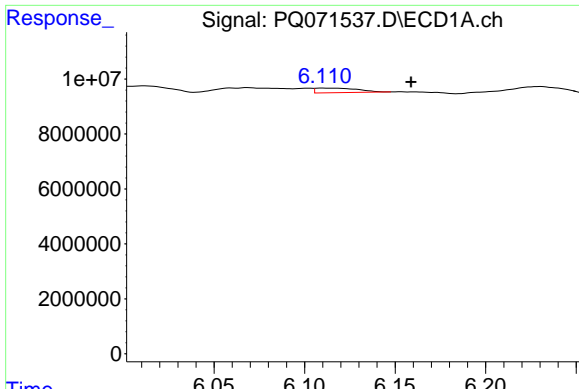
#28 AR-1254-3

R.T.: 5.876 min
 Delta R.T.: -0.002 min
 Response: 12881298
 Conc: 22.37 ng/ml



#28 AR-1254-3

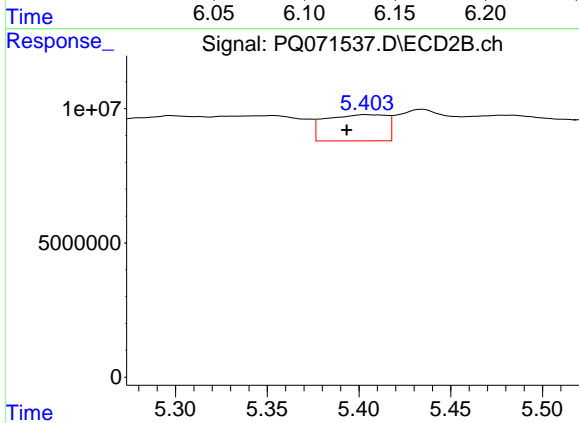
R.T.: 5.176 min
 Delta R.T.: 0.010 min
 Response: 28629128
 Conc: 37.70 ng/ml



#29 AR-1254-4

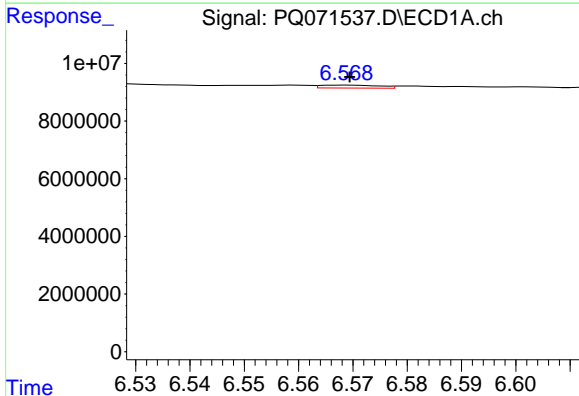
R.T.: 6.110 min
 Delta R.T.: -0.048 min
 Response: 2668209
 Conc: 6.32 ng/ml

Instrument :
 ECD_Q
 ClientSampleId :
 SB-1125-11B



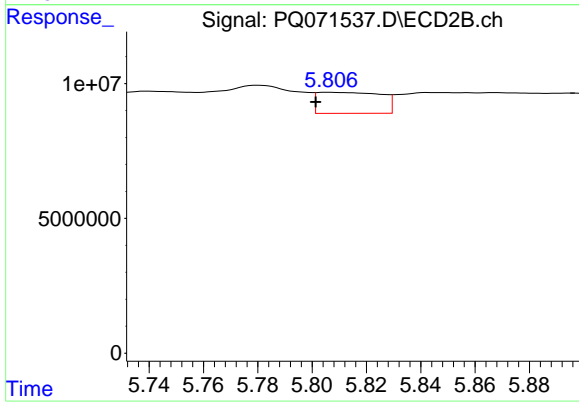
#29 AR-1254-4

R.T.: 5.404 min
 Delta R.T.: 0.010 min
 Response: 22672876
 Conc: 45.36 ng/ml



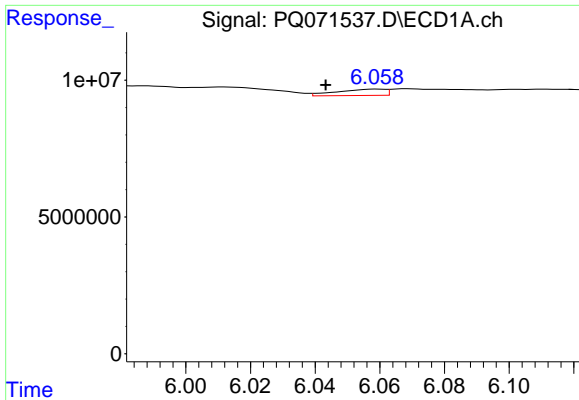
#30 AR-1254-5

R.T.: 6.569 min
 Delta R.T.: 0.000 min
 Response: 790192
 Conc: 1.72 ng/ml



#30 AR-1254-5

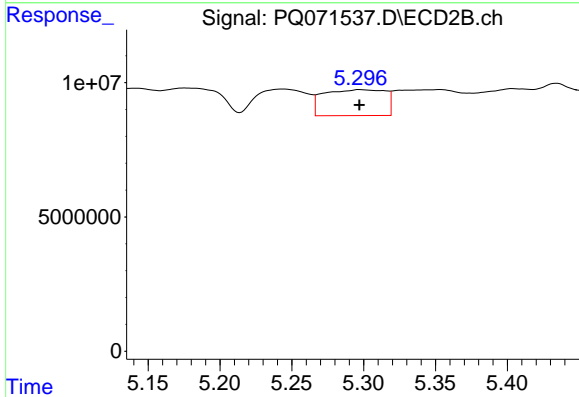
R.T.: 5.806 min
 Delta R.T.: 0.005 min
 Response: 12702731
 Conc: 18.35 ng/ml



#31 AR-1260-1

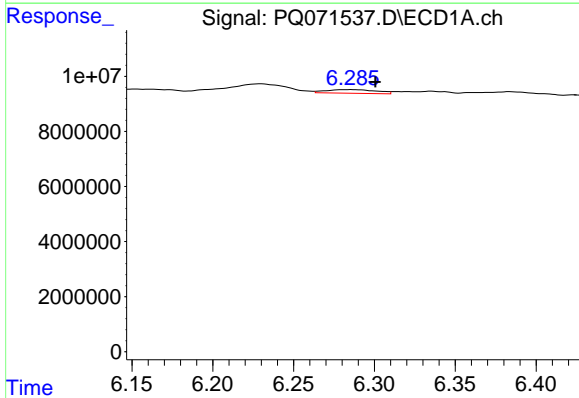
R.T.: 6.059 min
 Delta R.T.: 0.016 min
 Response: 2362666
 Conc: 5.28 ng/ml

Instrument :
 ECD_Q
 ClientSampleId :
 SB-1125-11B



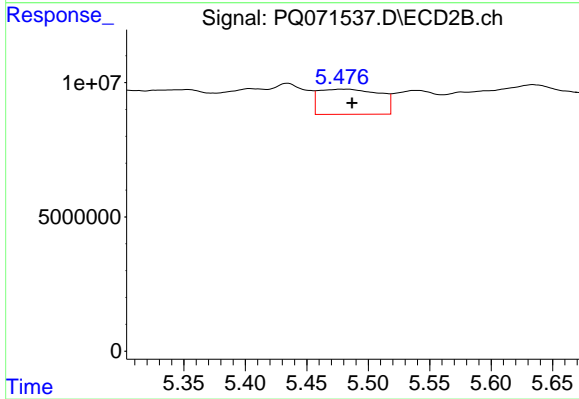
#31 AR-1260-1

R.T.: 5.297 min
 Delta R.T.: 0.000 min
 Response: 28623968
 Conc: 57.37 ng/ml



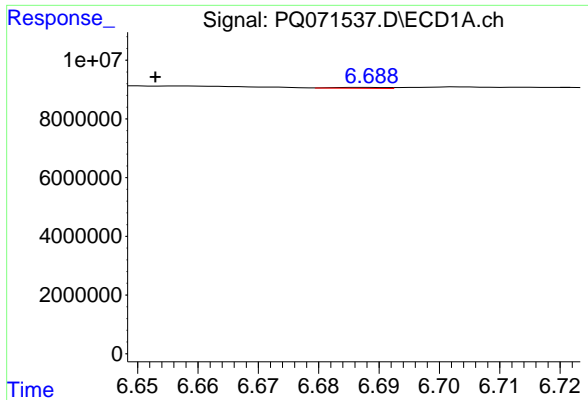
#32 AR-1260-2

R.T.: 6.285 min
 Delta R.T.: -0.015 min
 Response: 2915553
 Conc: 5.71 ng/ml



#32 AR-1260-2

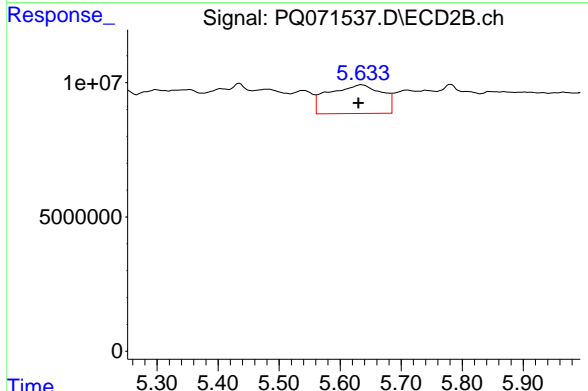
R.T.: 5.484 min
 Delta R.T.: -0.003 min
 Response: 32203714
 Conc: 53.11 ng/ml



#33 AR-1260-3

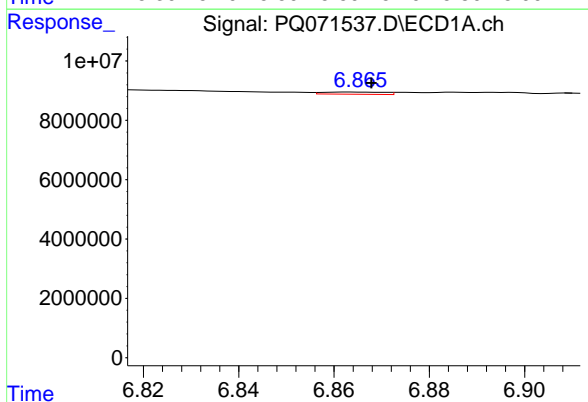
R.T.: 6.688 min
 Delta R.T.: 0.035 min
 Response: 183964
 Conc: 0.48 ng/ml

Instrument :
 ECD_Q
 ClientSampleId :
 SB-1125-11B



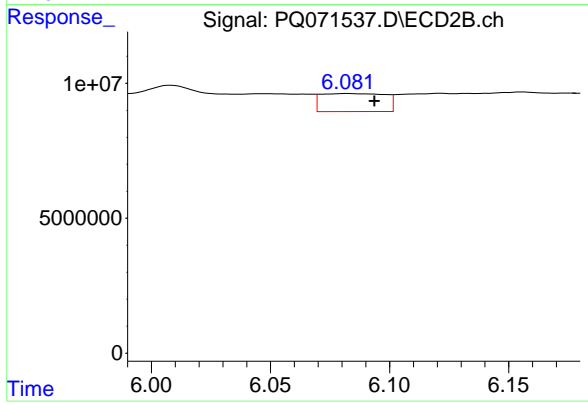
#33 AR-1260-3

R.T.: 5.634 min
 Delta R.T.: 0.004 min
 Response: 64941093
 Conc: 109.85 ng/ml



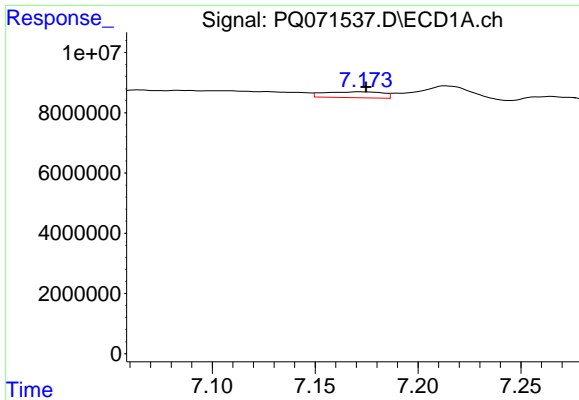
#34 AR-1260-4

R.T.: 6.863 min
 Delta R.T.: -0.005 min
 Response: 680432
 Conc: 1.63 ng/ml



#34 AR-1260-4

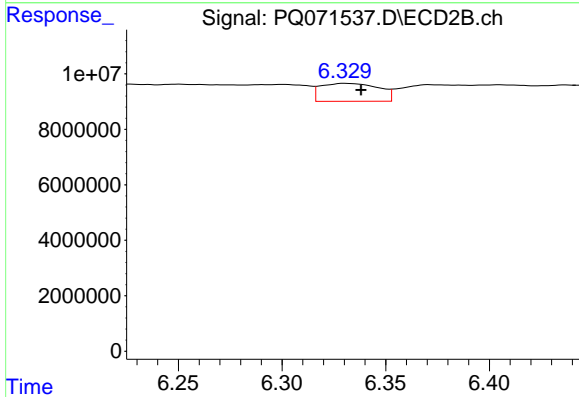
R.T.: 6.082 min
 Delta R.T.: -0.011 min
 Response: 12465106
 Conc: 25.16 ng/ml



#35 AR-1260-5

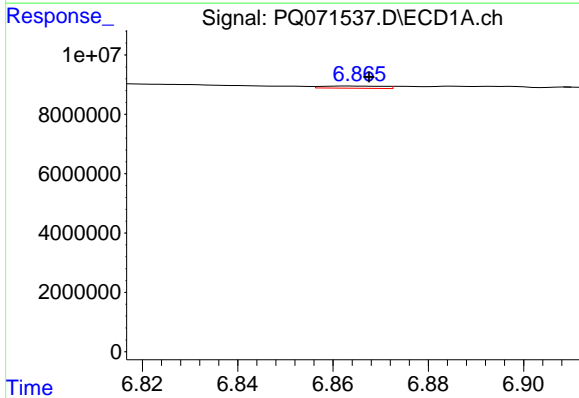
R.T.: 7.172 min
 Delta R.T.: -0.003 min
 Response: 3843983
 Conc: 4.62 ng/ml

Instrument :
 ECD_Q
 ClientSampleId :
 SB-1125-11B



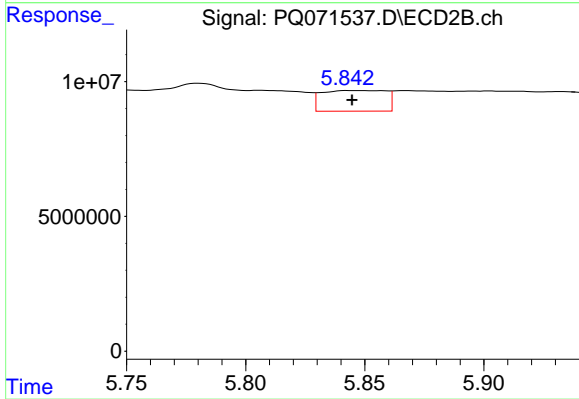
#35 AR-1260-5

R.T.: 6.330 min
 Delta R.T.: -0.008 min
 Response: 12573833
 Conc: 10.95 ng/ml



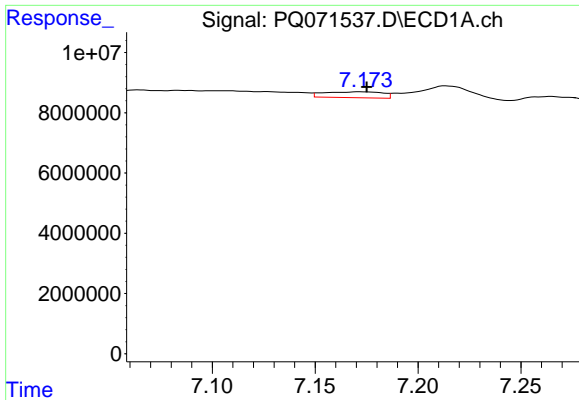
#36 AR-1262-1

R.T.: 6.863 min
 Delta R.T.: -0.004 min
 Response: 680432
 Conc: 1.46 ng/ml



#36 AR-1262-1

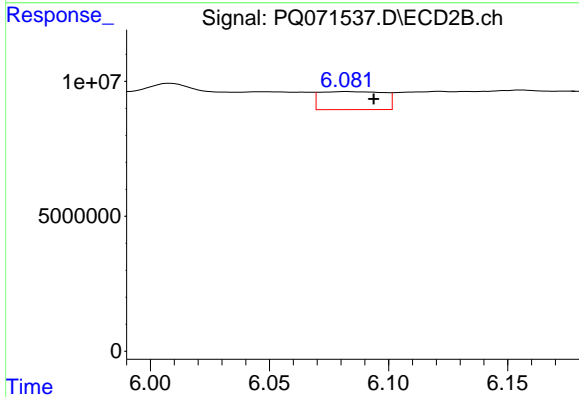
R.T.: 5.843 min
 Delta R.T.: -0.002 min
 Response: 14303280
 Conc: 22.37 ng/ml



#37 AR-1262-2

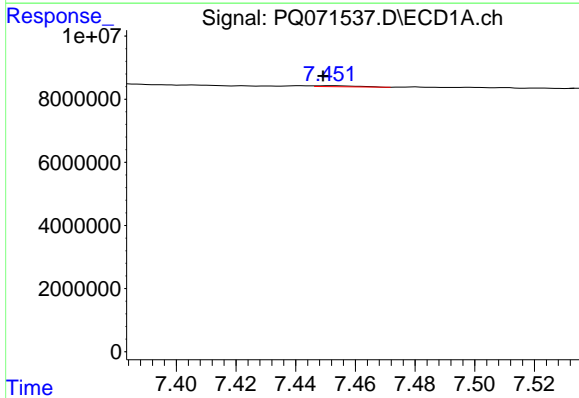
R.T.: 7.172 min
 Delta R.T.: -0.003 min
 Response: 3843983
 Conc: 4.52 ng/ml

Instrument :
 ECD_Q
 ClientSampleId :
 SB-1125-11B



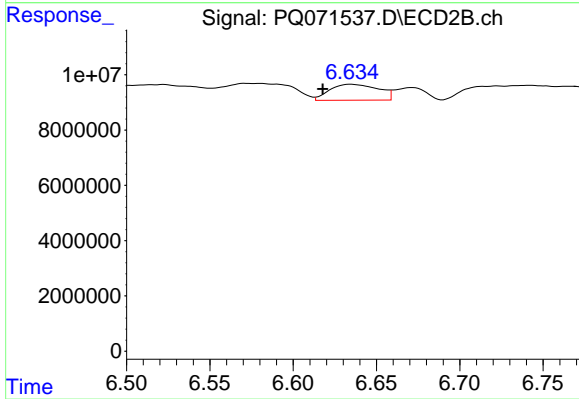
#37 AR-1262-2

R.T.: 6.082 min
 Delta R.T.: -0.011 min
 Response: 12465106
 Conc: 20.97 ng/ml



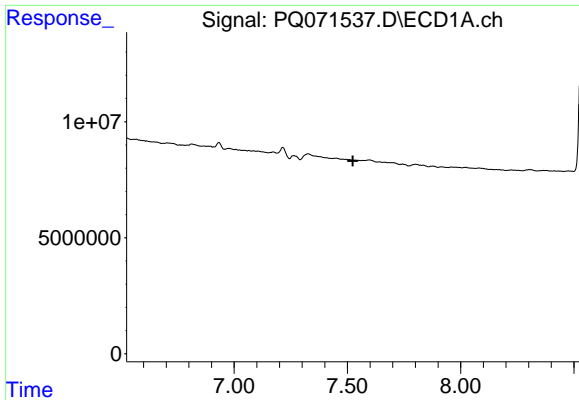
#38 AR-1262-3

R.T.: 7.452 min
 Delta R.T.: 0.003 min
 Response: 302337
 Conc: 0.54 ng/ml



#38 AR-1262-3

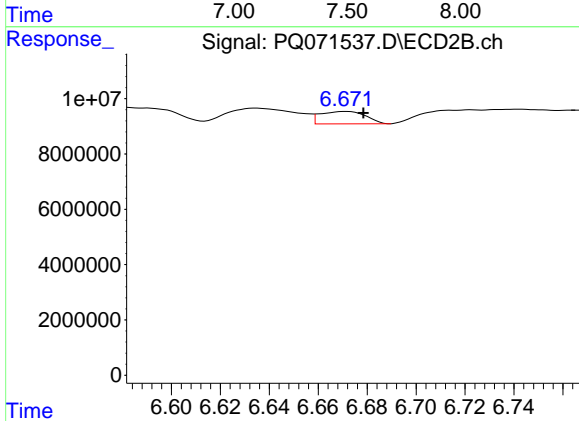
R.T.: 6.635 min
 Delta R.T.: 0.017 min
 Response: 11719833
 Conc: 24.54 ng/ml



#39 AR-1262-4

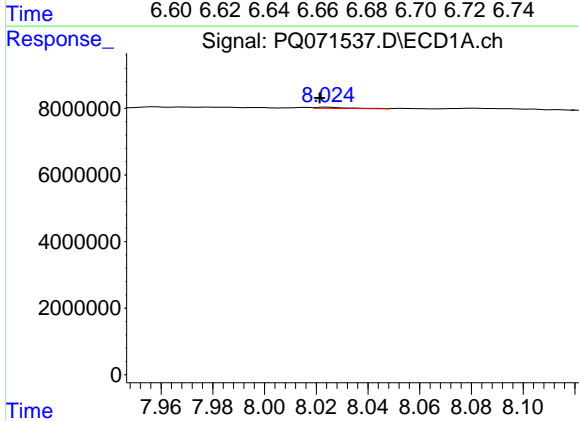
R.T.: 0.000 min
 Exp R.T.: 7.524 min
 Response: 0
 Conc: N.D.

Instrument :
 ECD_Q
 ClientSampleId :
 SB-1125-11B



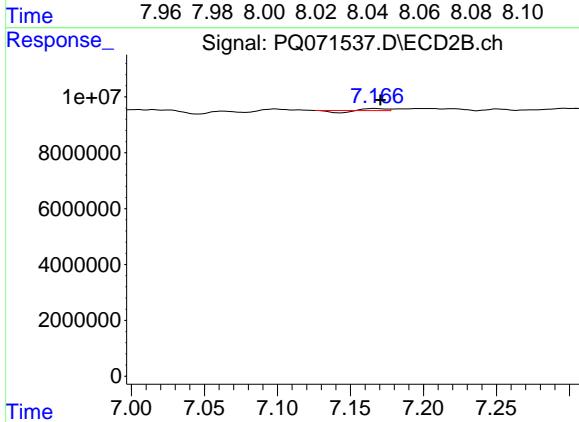
#39 AR-1262-4

R.T.: 6.671 min
 Delta R.T.: -0.007 min
 Response: 5800897
 Conc: 6.49 ng/ml



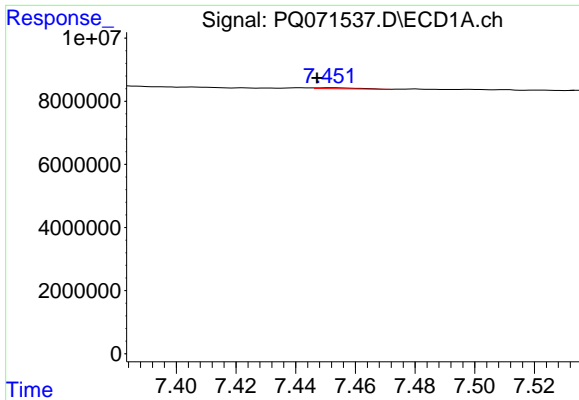
#40 AR-1262-5

R.T.: 8.024 min
 Delta R.T.: 0.003 min
 Response: 313402
 Conc: 1.10 ng/ml



#40 AR-1262-5

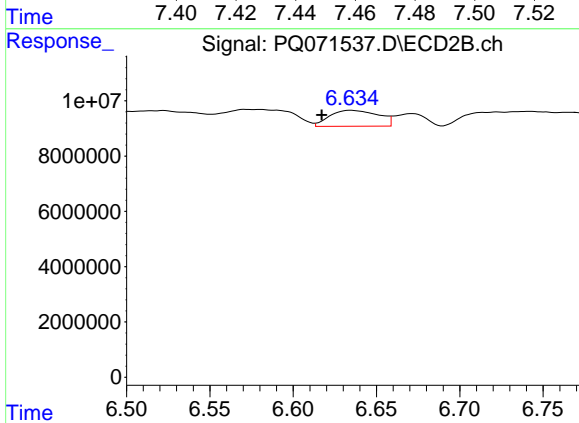
R.T.: 7.167 min
 Delta R.T.: -0.004 min
 Response: 176677
 Conc: 0.41 ng/ml



#41 AR-1268-1

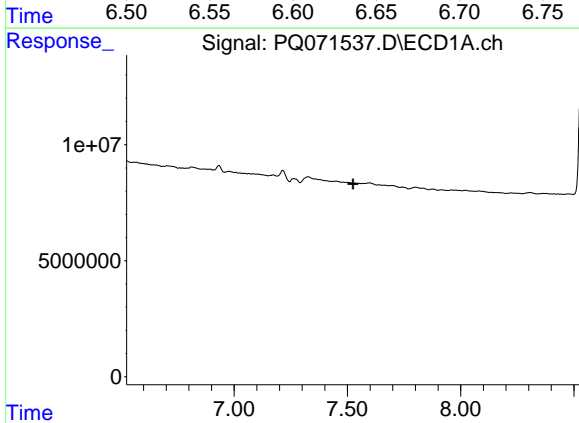
R.T.: 7.452 min
 Delta R.T.: 0.005 min
 Response: 302337
 Conc: 0.30 ng/ml

Instrument :
 ECD_Q
 ClientSampleId :
 SB-1125-11B



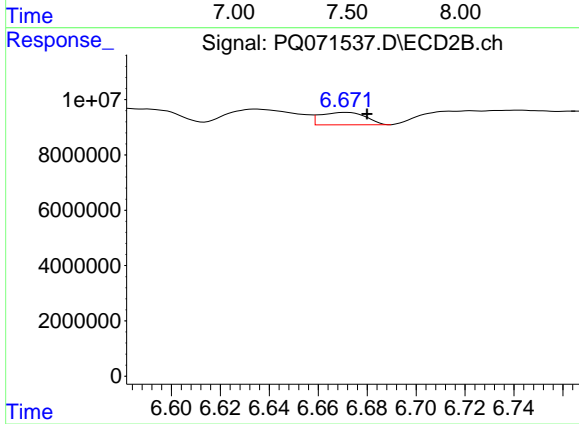
#41 AR-1268-1

R.T.: 6.635 min
 Delta R.T.: 0.017 min
 Response: 11719833
 Conc: 8.14 ng/ml



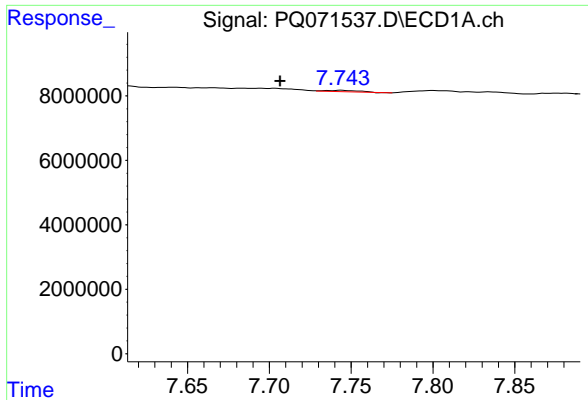
#42 AR-1268-2

R.T.: 0.000 min
 Exp R.T. : 7.525 min
 Response: 0
 Conc: N.D.



#42 AR-1268-2

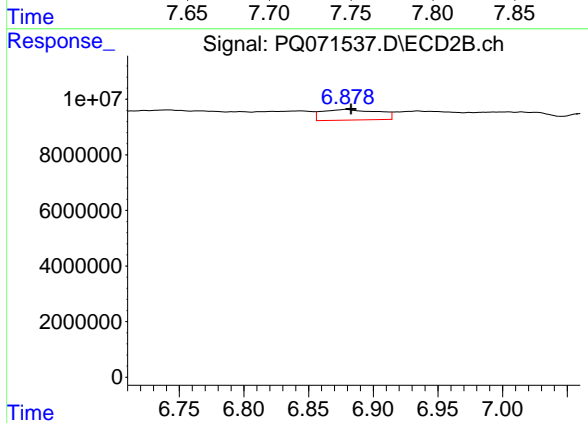
R.T.: 6.671 min
 Delta R.T.: -0.009 min
 Response: 5800897
 Conc: 4.30 ng/ml



#43 AR-1268-3

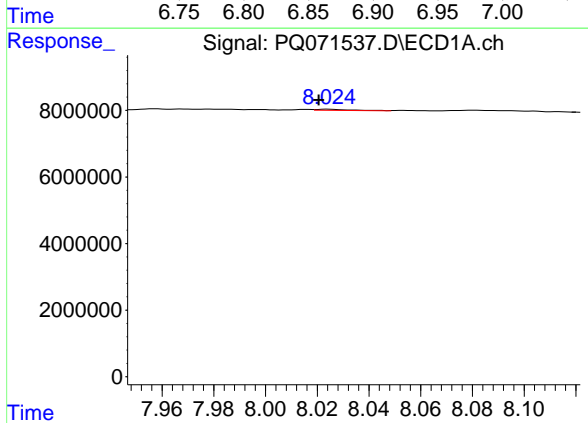
R.T.: 7.744 min
 Delta R.T.: 0.037 min
 Response: 578935
 Conc: 0.74 ng/ml

Instrument :
 ECD_Q
 ClientSampleId :
 SB-1125-11B



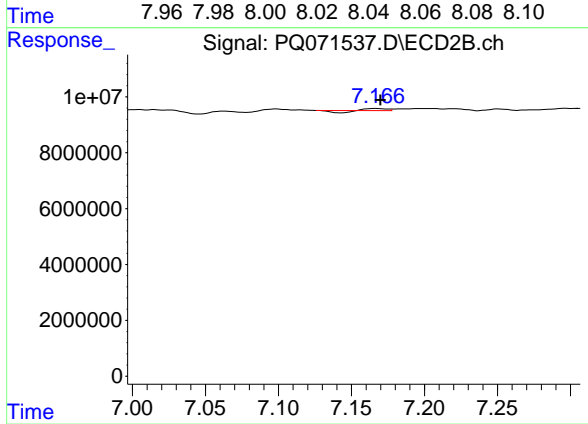
#43 AR-1268-3

R.T.: 6.879 min
 Delta R.T.: -0.004 min
 Response: 11445014
 Conc: 10.08 ng/ml



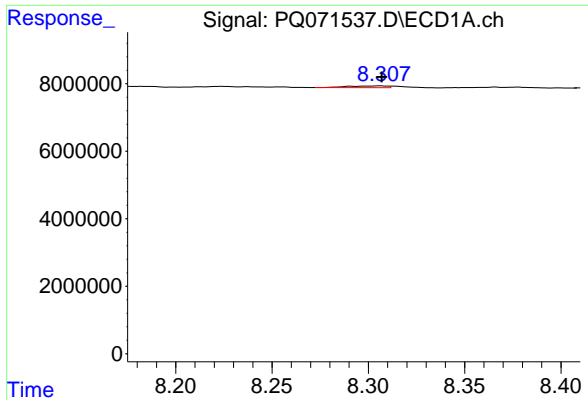
#44 AR-1268-4

R.T.: 8.024 min
 Delta R.T.: 0.004 min
 Response: 313402
 Conc: 0.93 ng/ml



#44 AR-1268-4

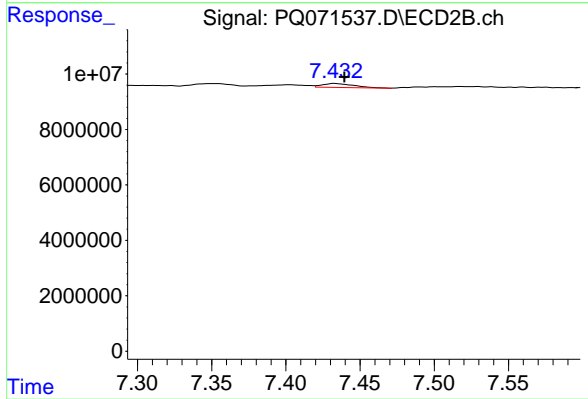
R.T.: 7.167 min
 Delta R.T.: -0.003 min
 Response: 176677
 Conc: 0.35 ng/ml



#45 AR-1268-5

R.T.: 8.306 min
 Delta R.T.: 0.000 min
 Response: 748777
 Conc: 0.33 ng/ml

Instrument :
 ECD_Q
 ClientSampleId :
 SB-1125-11B



#45 AR-1268-5

R.T.: 7.433 min
 Delta R.T.: -0.007 min
 Response: 2051781
 Conc: 0.58 ng/ml