

Data Path : Z:\pestpcbsrv\HPCHEM1\ECD_Q\Data\PQ112625\
 Data File : PQ071539.D
 Signal(s) : Signal #1: ECD1A.ch Signal #2: ECD2B.ch
 Acq On : 26 Nov 2025 14:55
 Operator : YP\AJ
 Sample : Q3719-06
 Misc :
 ALS Vial : 10 Sample Multiplier: 1

Instrument :
 ECD_Q
 ClientSampleId :
 SB-1125-12B

Integration File signal 1: autoint1.e
 Integration File signal 2: autoint2.e
 Quant Time: Nov 27 01:33:23 2025
 Quant Method : Z:\pestpcbsrv\HPCHEM1\ECD_Q\Method\PQ111825.M
 Quant Title : GC EXTRACTABLES
 QLast Update : Wed Nov 19 04:02:38 2025
 Response via : Initial Calibration
 Integrator: ChemStation

Volume Inj. : 2 µl
 Signal #1 Phase : ZB-MR1 Signal #2 Phase: ZB-MR2
 Signal #1 Info : 30Mx0.32mmx 0.50µ Signal #2 Info : 30M x 0.32mm x 0.25µm

Compound	RT#1	RT#2	Resp#1	Resp#2	ng/ml	ng/ml
System Monitoring Compounds						
1) SA Tetrachlo...	3.410	2.854	213.5E6	218.5E6	24.529	23.403
2) SA Decachlor...	8.537	7.652	135.4E6	156.8E6	21.625	17.159
Target Compounds						
3) L1 AR-1016-1	4.496	3.887	5744940	13074444	17.380	36.105 #
4) L1 AR-1016-2	4.519	3.887	15087595	13074444	31.722	26.618
5) L1 AR-1016-3	4.572	4.053	5235548	33011036	17.542	118.748 #
6) L1 AR-1016-4	4.644	4.135f	9930113	17250512	40.441	76.926 #
7) L1 AR-1016-5	4.972	4.288	1454360	4859257	6.152	17.444 #
8) L2 AR-1221-1	3.654f	3.048	1504924	7223384	13.872	62.855 #
9) L2 AR-1221-2	3.684	3.126	8336572	9940179	105.087	116.533
10) L2 AR-1221-3	3.770	3.202	5419515	6188531	22.246	23.936
11) L3 AR-1232-1	3.740	3.202	3320717	6188531	16.823	29.187 #
12) L3 AR-1232-2	4.276f	3.887	21321553	13074444	208.085	60.362 #
13) L3 AR-1232-3	4.519	4.053	15087595	33011036	72.820	277.677 #
14) L3 AR-1232-4	4.644	4.135	9930113	17250512	95.636	183.721 #
15) L3 AR-1232-5	4.803	4.288	2027121	4859257	23.997	44.963 #
16) L4 AR-1242-1	4.496	3.887	5744940	13074444	22.033	45.160 #
17) L4 AR-1242-2	4.519	3.887	15087595	13074444	39.623	32.456
18) L4 AR-1242-3	4.572	4.053	5235548	33011036	21.524	141.136 #
19) L4 AR-1242-4	4.644	4.135	9930113	17250512	51.104	86.326 #
20) L4 AR-1242-5	5.362	4.629	15058281	37297689	75.374	141.663 #
21) L5 AR-1248-1	4.496	3.887	5744940	13074444	30.158	61.418 #
22) L5 AR-1248-2	4.738	4.135f	5881107	17250512	24.174	60.738 #
23) L5 AR-1248-3	4.972	4.135	1454360	17250512	4.950	61.584 #
24) L5 AR-1248-4	5.313	4.288	38453791	4859257	146.280	14.029 #
25) L5 AR-1248-5	5.362	4.664	15058281	1942355	44.506	5.571 #
26) L6 AR-1254-1	5.313	4.629	38453791	37297689	110.703	69.602 #
27) L6 AR-1254-2	5.513	4.778	19014204	4968069	35.093	10.829 #
28) L6 AR-1254-3	5.877	5.181	52165399	228.6E6	90.592	301.029 #
29) L6 AR-1254-4	6.156	5.390	37926840	15141420	89.770	30.294 #
30) L6 AR-1254-5	6.568	5.795	419.4E6	453.0E6	912.431	654.458 #
31) L7 AR-1260-1	6.043	5.291	311.4E6	396.9E6	695.894	795.458
32) L7 AR-1260-2	6.300	5.481	258.5E6	307.2E6	505.955	506.636
33) L7 AR-1260-3	6.653	5.623	248.5E6	511.6E6	649.229	865.410 #
34) L7 AR-1260-4	6.867	6.088	278.1E6	322.8E6	665.062	651.697
35) L7 AR-1260-5	7.175	6.332	639.1E6	791.8E6	767.923	689.546
36) L8 AR-1262-1	6.867	5.839	278.1E6	328.3E6	595.938	513.393
37) L8 AR-1262-2	7.175	6.088	639.1E6	322.8E6	751.589	543.185 #
38) L8 AR-1262-3	7.451	6.611	396.0E6	136.9E6	706.083	286.578 #
39) L8 AR-1262-4	7.522	6.668	223.8E6	591.4E6	510.666	661.230 #
40) L8 AR-1262-5	8.021	7.164	142.0E6	172.7E6	500.117	403.088
41) L9 AR-1268-1	7.451	6.611	396.0E6	136.9E6	387.968	95.057 #

Data Path : Z:\pestpcbsrv\HPCHEM1\ECD_Q\Data\PQ112625\
 Data File : PQ071539.D
 Signal(s) : Signal #1: ECD1A.ch Signal #2: ECD2B.ch
 Acq On : 26 Nov 2025 14:55
 Operator : YP\AJ
 Sample : Q3719-06
 Misc :
 ALS Vial : 10 Sample Multiplier: 1

Instrument :
 ECD_Q
 ClientSampleId :
 SB-1125-12B

Integration File signal 1: autoint1.e
 Integration File signal 2: autoint2.e
 Quant Time: Nov 27 01:33:23 2025
 Quant Method : Z:\pestpcbsrv\HPCHEM1\ECD_Q\Method\PQ111825.M
 Quant Title : GC EXTRACTABLES
 QLast Update : Wed Nov 19 04:02:38 2025
 Response via : Initial Calibration
 Integrator: ChemStation

Volume Inj. : 2 µl
 Signal #1 Phase : ZB-MR1 Signal #2 Phase: ZB-MR2
 Signal #1 Info : 30Mx0.32mmx 0.50µ Signal #2 Info : 30M x 0.32mm x 0.25µm

	Compound	RT#1	RT#2	Resp#1	Resp#2	ng/ml	ng/ml
42)	L9 AR-1268-2	7.522	6.668	223.8E6	591.4E6	236.396	438.796 #
43)	L9 AR-1268-3	7.707	6.870	11378235	30028657	14.627	26.439 #
44)	L9 AR-1268-4	8.021	7.164	142.0E6	172.7E6	419.772	340.455
45)	L9 AR-1268-5	8.308	7.433	35087011	46601085	15.290	13.159

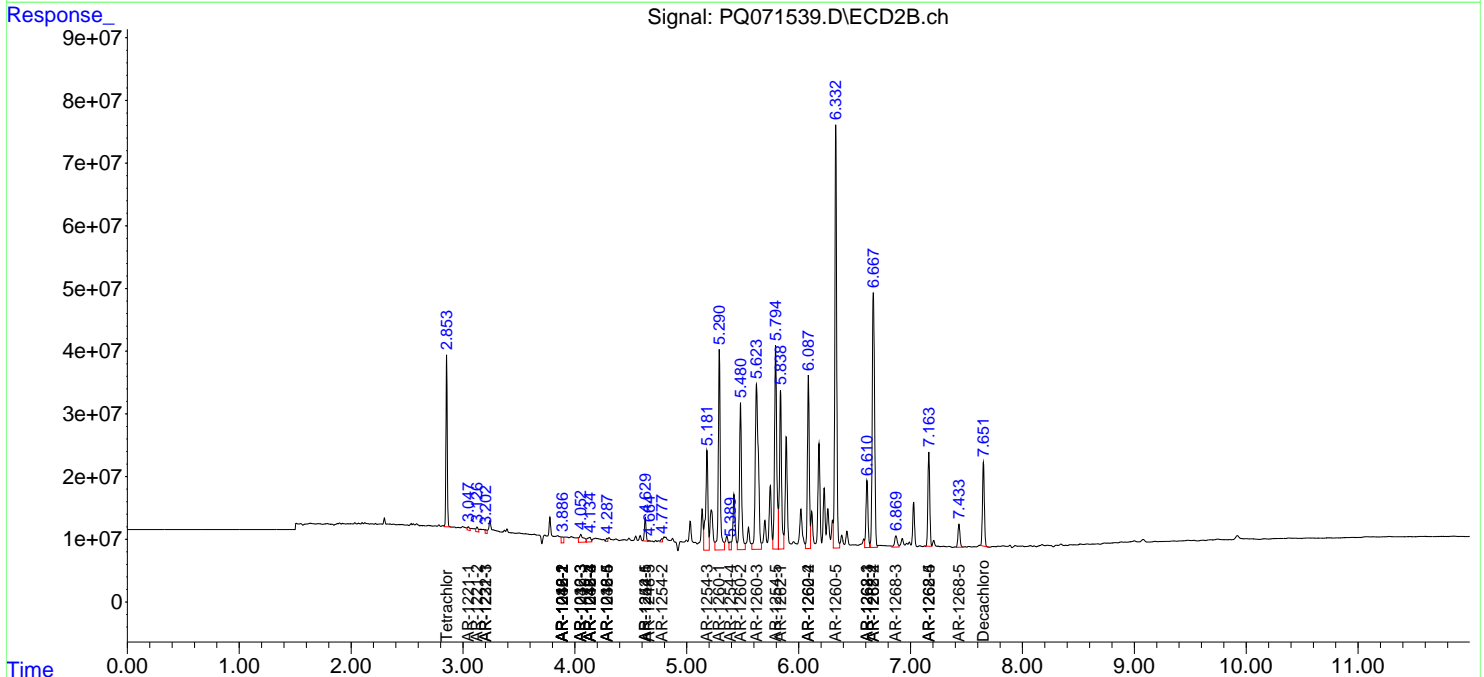
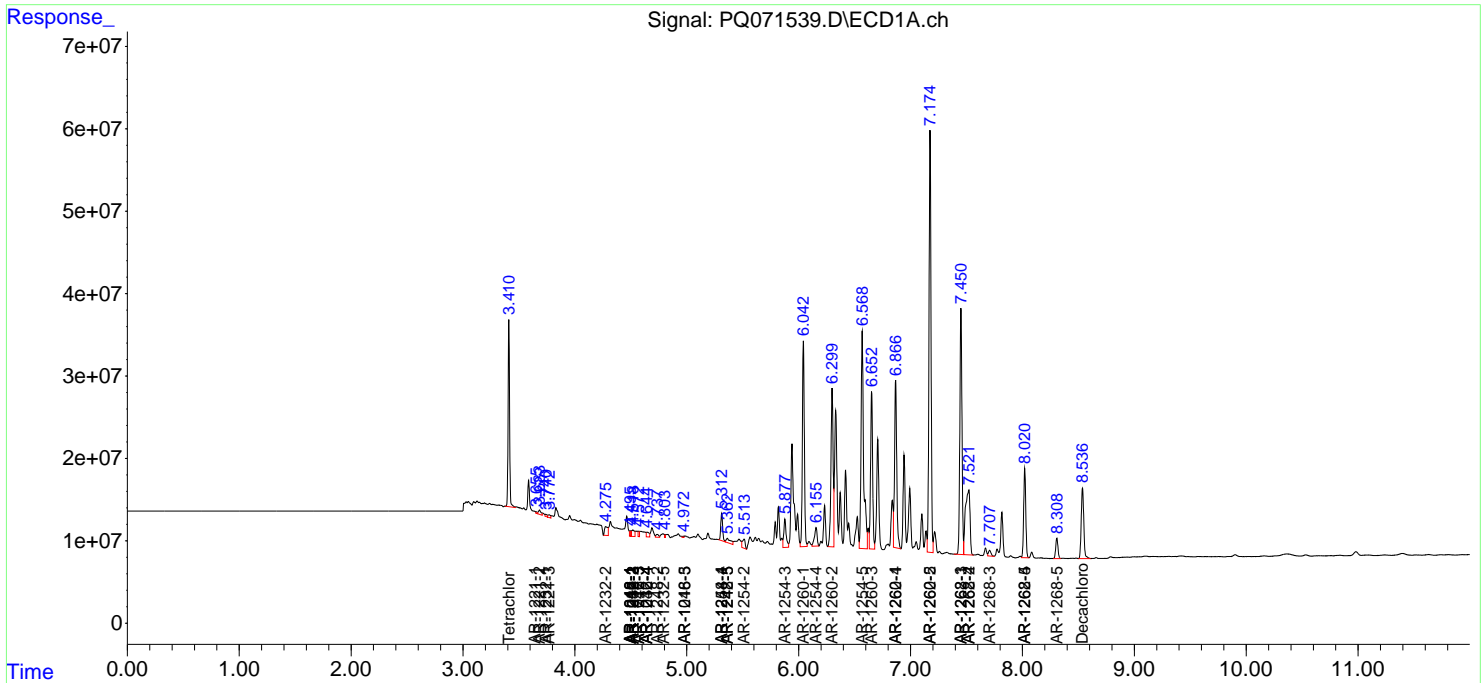
(f)=RT Delta > 1/2 Window (#)=Amounts differ by > 25% (m)=manual int.

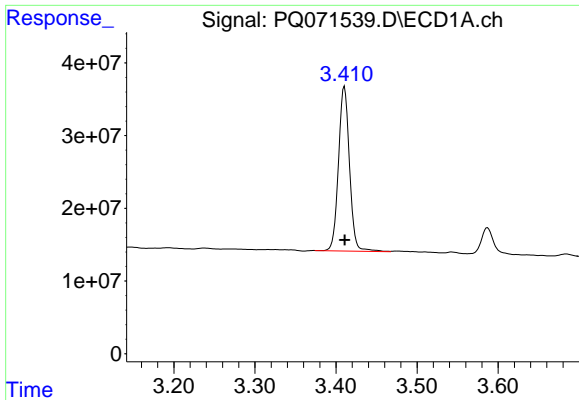
Data Path : Z:\pestpcbsrv\HPCHEM1\ECD_Q\Data\PQ112625\
 Data File : PQ071539.D
 Signal(s) : Signal #1: ECD1A.ch Signal #2: ECD2B.ch
 Acq On : 26 Nov 2025 14:55
 Operator : YP\AJ
 Sample : Q3719-06
 Misc :
 ALS Vial : 10 Sample Multiplier: 1

Instrument :
 ECD_Q
 ClientSampleId :
 SB-1125-12B

Integration File signal 1: autoint1.e
 Integration File signal 2: autoint2.e
 Quant Time: Nov 27 01:33:23 2025
 Quant Method : Z:\pestpcbsrv\HPCHEM1\ECD_Q\Method\PQ111825.M
 Quant Title : GC EXTRACTABLES
 QLast Update : Wed Nov 19 04:02:38 2025
 Response via : Initial Calibration
 Integrator: ChemStation

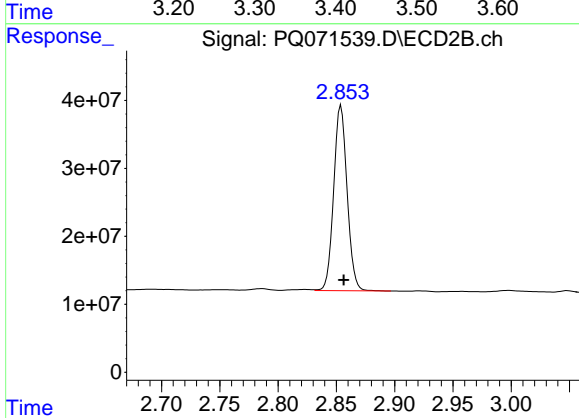
Volume Inj. : 2 µl
 Signal #1 Phase : ZB-MR1 Signal #2 Phase: ZB-MR2
 Signal #1 Info : 30Mx0.32mmx 0.50µ Signal #2 Info : 30M x 0.32mm x 0.25µm



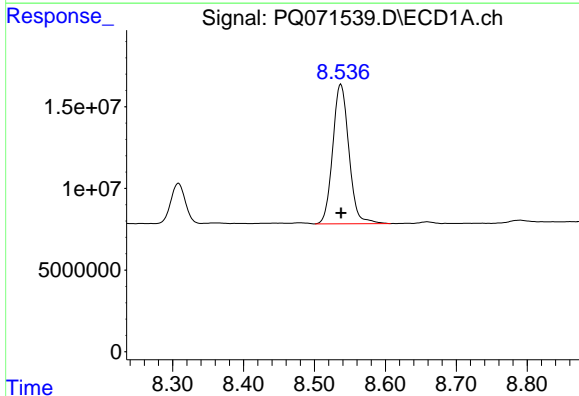


#1 Tetrachloro-m-xylene
 R.T.: 3.410 min
 Delta R.T.: 0.000 min
 Response: 213525981
 Conc: 24.53 ng/ml

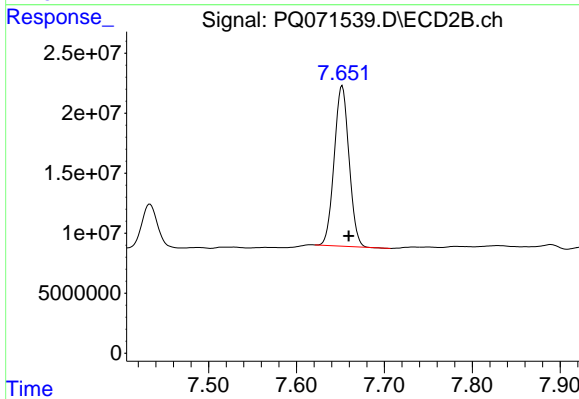
Instrument :
 ECD_Q
 ClientSampleId :
 SB-1125-12B



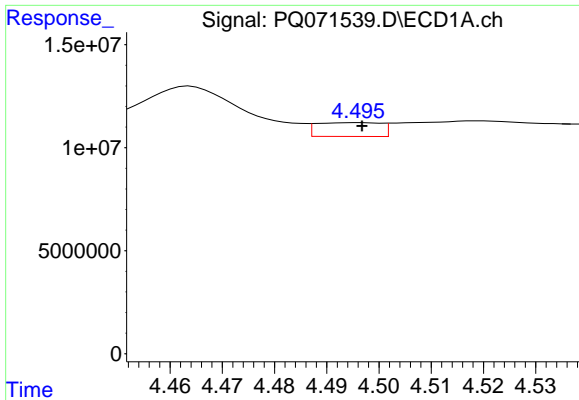
#1 Tetrachloro-m-xylene
 R.T.: 2.854 min
 Delta R.T.: -0.002 min
 Response: 218508905
 Conc: 23.40 ng/ml



#2 Decachlorobiphenyl
 R.T.: 8.537 min
 Delta R.T.: 0.000 min
 Response: 135408644
 Conc: 21.63 ng/ml



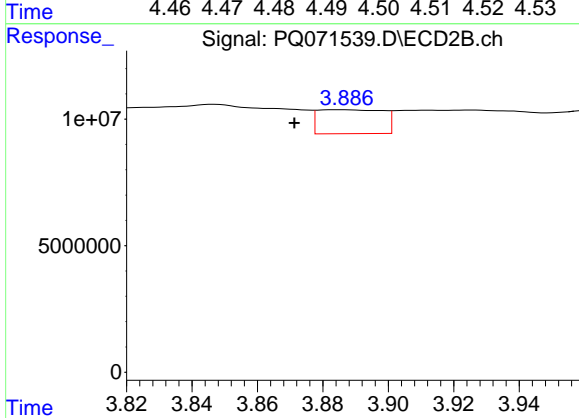
#2 Decachlorobiphenyl
 R.T.: 7.652 min
 Delta R.T.: -0.008 min
 Response: 156796884
 Conc: 17.16 ng/ml



#3 AR-1016-1

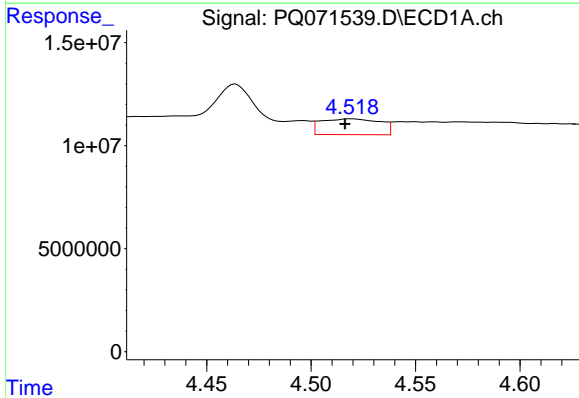
R.T.: 4.496 min
 Delta R.T.: 0.000 min
 Response: 5744940
 Conc: 17.38 ng/ml

Instrument :
 ECD_Q
 ClientSampleId :
 SB-1125-12B



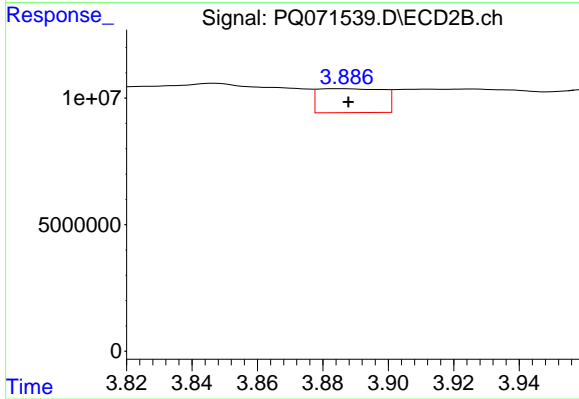
#3 AR-1016-1

R.T.: 3.887 min
 Delta R.T.: 0.016 min
 Response: 13074444
 Conc: 36.10 ng/ml



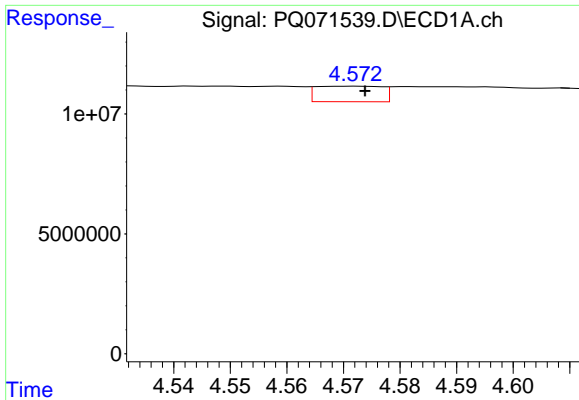
#4 AR-1016-2

R.T.: 4.519 min
 Delta R.T.: 0.003 min
 Response: 15087595
 Conc: 31.72 ng/ml



#4 AR-1016-2

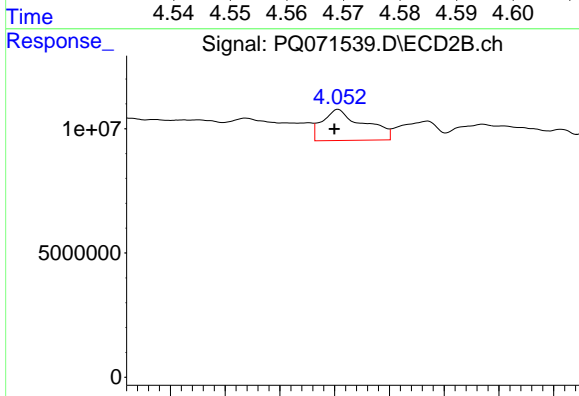
R.T.: 3.887 min
 Delta R.T.: 0.000 min
 Response: 13074444
 Conc: 26.62 ng/ml



#5 AR-1016-3

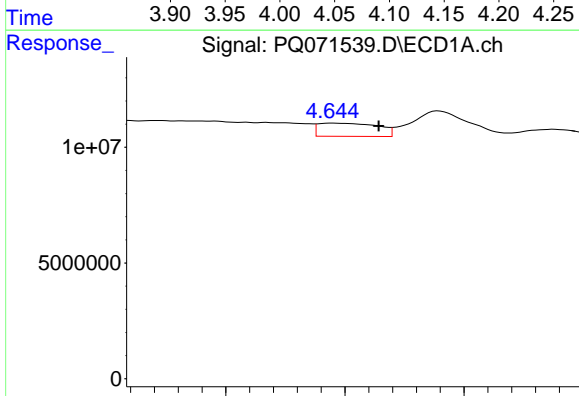
R.T.: 4.572 min
 Delta R.T.: -0.002 min
 Response: 5235548
 Conc: 17.54 ng/ml

Instrument :
 ECD_Q
 ClientSampleId :
 SB-1125-12B



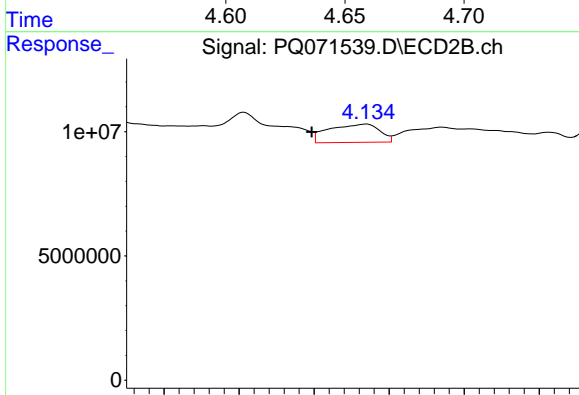
#5 AR-1016-3

R.T.: 4.053 min
 Delta R.T.: 0.003 min
 Response: 33011036
 Conc: 118.75 ng/ml



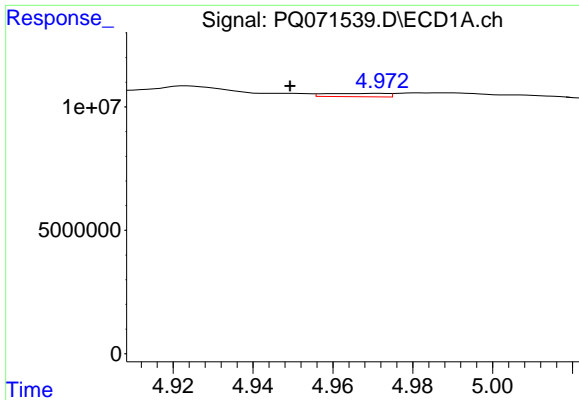
#6 AR-1016-4

R.T.: 4.644 min
 Delta R.T.: -0.020 min
 Response: 9930113
 Conc: 40.44 ng/ml



#6 AR-1016-4

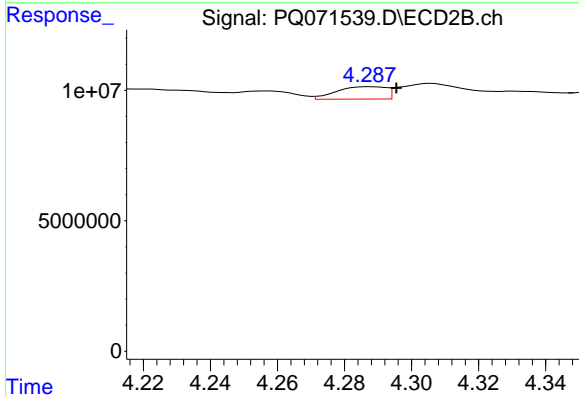
R.T.: 4.135 min
 Delta R.T.: 0.037 min
 Response: 17250512
 Conc: 76.93 ng/ml



#7 AR-1016-5

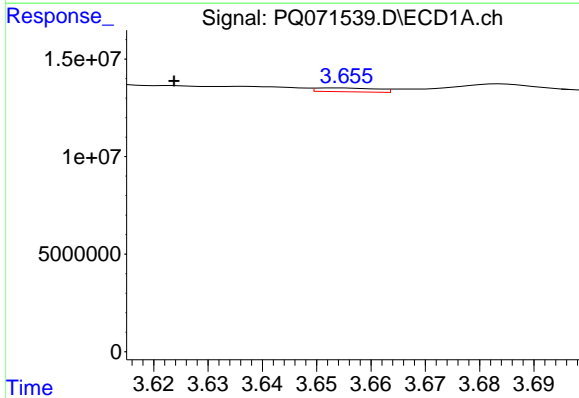
R.T.: 4.972 min
 Delta R.T.: 0.022 min
 Response: 1454360
 Conc: 6.15 ng/ml

Instrument :
 ECD_Q
 ClientSampleId :
 SB-1125-12B



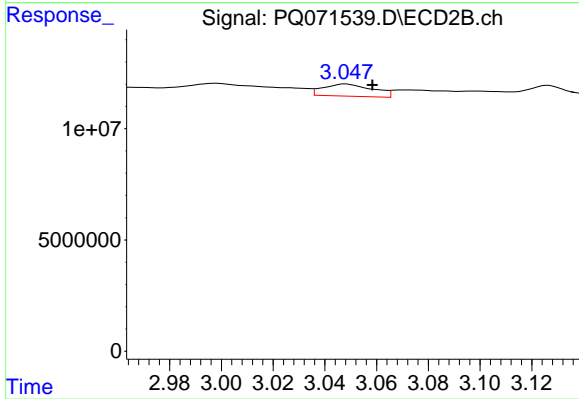
#7 AR-1016-5

R.T.: 4.288 min
 Delta R.T.: -0.008 min
 Response: 4859257
 Conc: 17.44 ng/ml



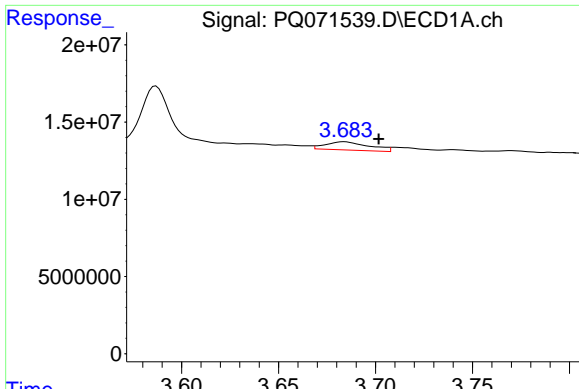
#8 AR-1221-1

R.T.: 3.654 min
 Delta R.T.: 0.030 min
 Response: 1504924
 Conc: 13.87 ng/ml



#8 AR-1221-1

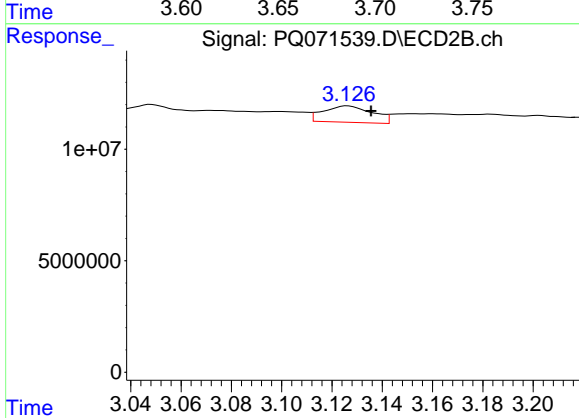
R.T.: 3.048 min
 Delta R.T.: -0.010 min
 Response: 7223384
 Conc: 62.85 ng/ml



#9 AR-1221-2

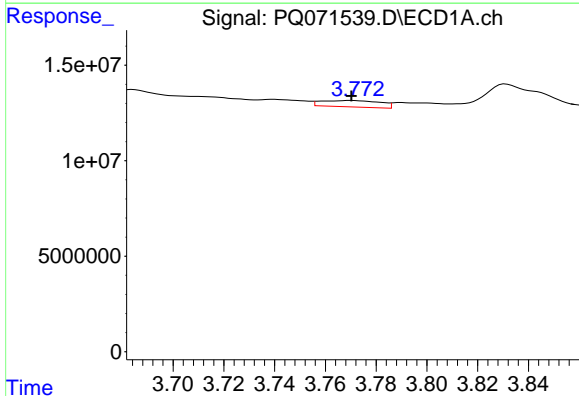
R.T.: 3.684 min
 Delta R.T.: -0.018 min
 Response: 8336572
 Conc: 105.09 ng/ml

Instrument :
 ECD_Q
 ClientSampleId :
 SB-1125-12B



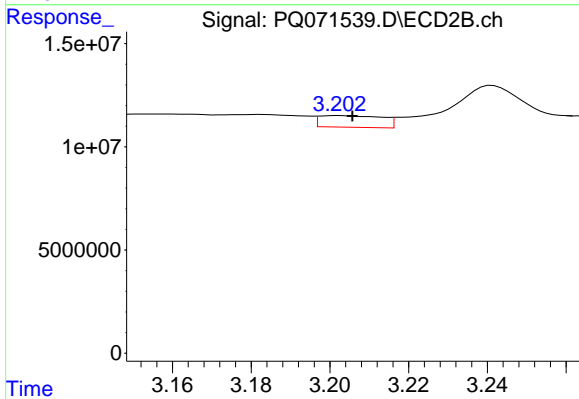
#9 AR-1221-2

R.T.: 3.126 min
 Delta R.T.: -0.009 min
 Response: 9940179
 Conc: 116.53 ng/ml



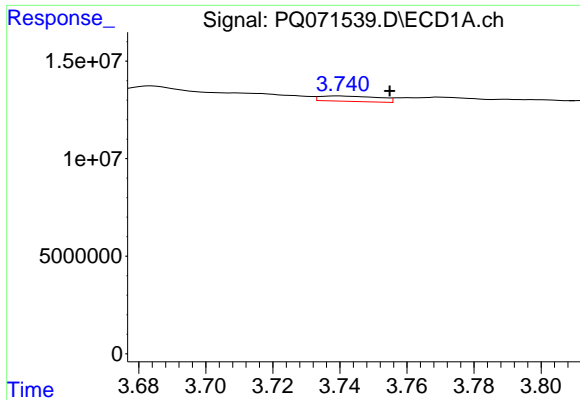
#10 AR-1221-3

R.T.: 3.770 min
 Delta R.T.: 0.000 min
 Response: 5419515
 Conc: 22.25 ng/ml



#10 AR-1221-3

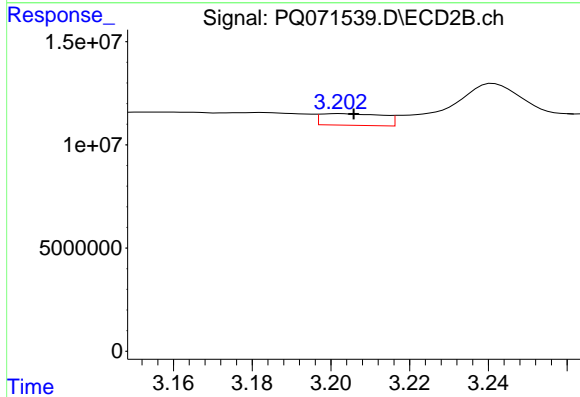
R.T.: 3.202 min
 Delta R.T.: -0.003 min
 Response: 6188531
 Conc: 23.94 ng/ml



#11 AR-1232-1

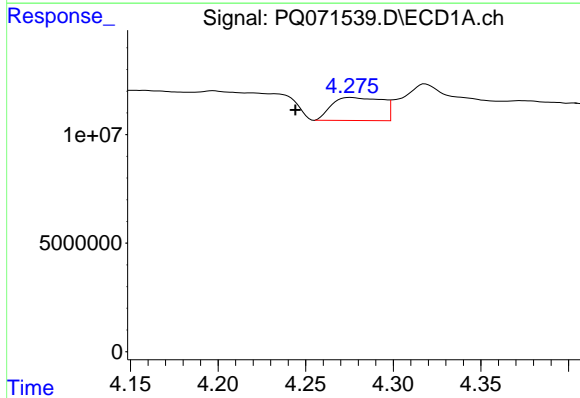
R.T.: 3.740 min
 Delta R.T.: -0.015 min
 Response: 3320717
 Conc: 16.82 ng/ml

Instrument :
 ECD_Q
 ClientSampleId :
 SB-1125-12B



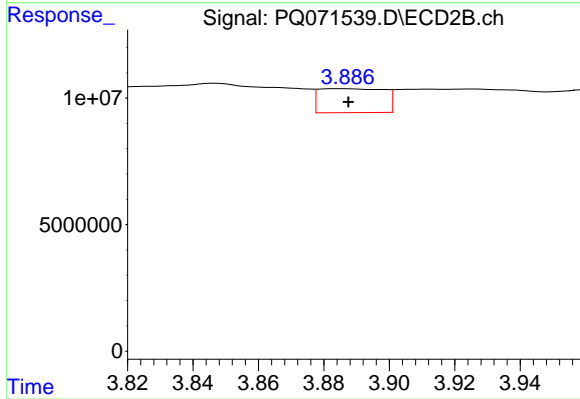
#11 AR-1232-1

R.T.: 3.202 min
 Delta R.T.: -0.003 min
 Response: 6188531
 Conc: 29.19 ng/ml



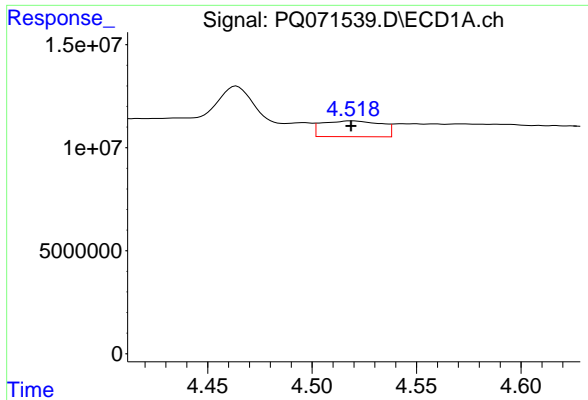
#12 AR-1232-2

R.T.: 4.276 min
 Delta R.T.: 0.032 min
 Response: 21321553
 Conc: 208.09 ng/ml



#12 AR-1232-2

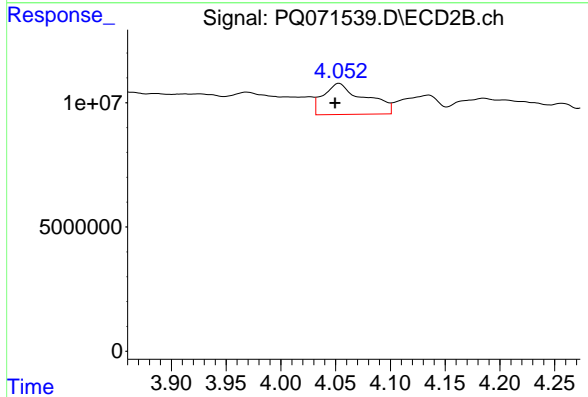
R.T.: 3.887 min
 Delta R.T.: 0.000 min
 Response: 13074444
 Conc: 60.36 ng/ml



#13 AR-1232-3

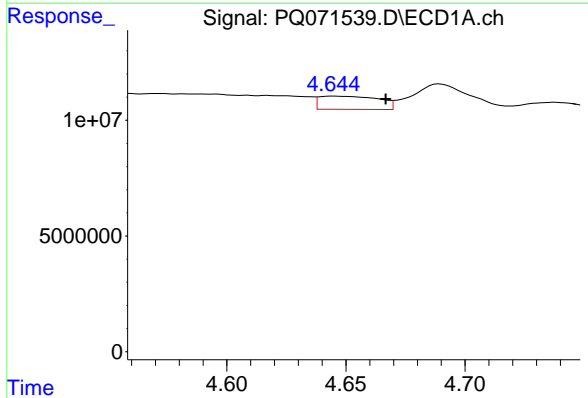
R.T.: 4.519 min
 Delta R.T.: 0.000 min
 Response: 15087595
 Conc: 72.82 ng/ml

Instrument :
 ECD_Q
 ClientSampleId :
 SB-1125-12B



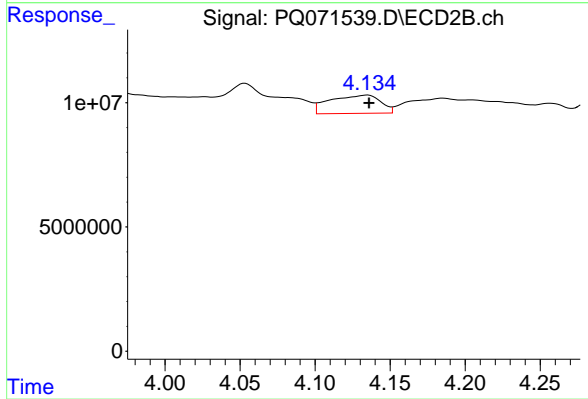
#13 AR-1232-3

R.T.: 4.053 min
 Delta R.T.: 0.004 min
 Response: 33011036
 Conc: 277.68 ng/ml



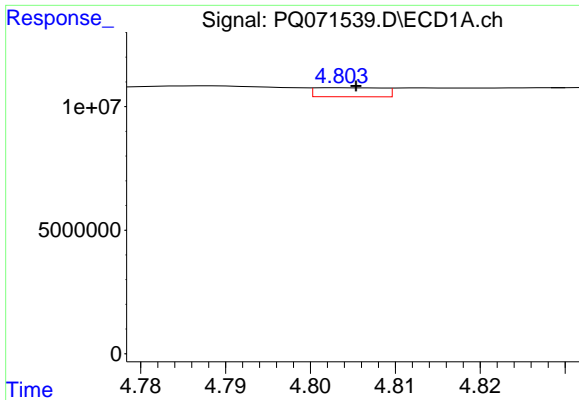
#14 AR-1232-4

R.T.: 4.644 min
 Delta R.T.: -0.022 min
 Response: 9930113
 Conc: 95.64 ng/ml



#14 AR-1232-4

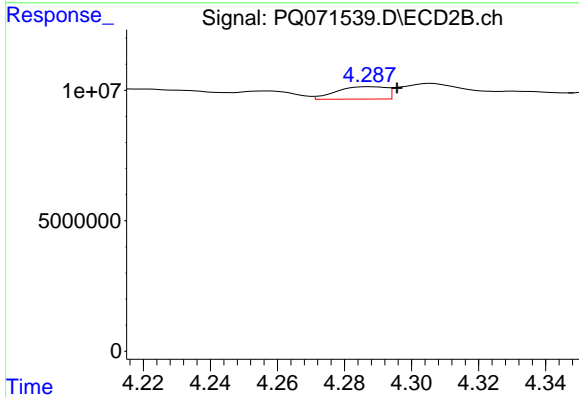
R.T.: 4.135 min
 Delta R.T.: -0.001 min
 Response: 17250512
 Conc: 183.72 ng/ml



#15 AR-1232-5

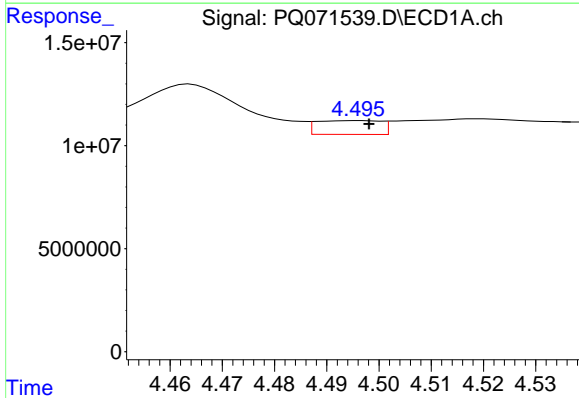
R.T.: 4.803 min
 Delta R.T.: -0.002 min
 Response: 2027121
 Conc: 24.00 ng/ml

Instrument :
 ECD_Q
 ClientSampleId :
 SB-1125-12B



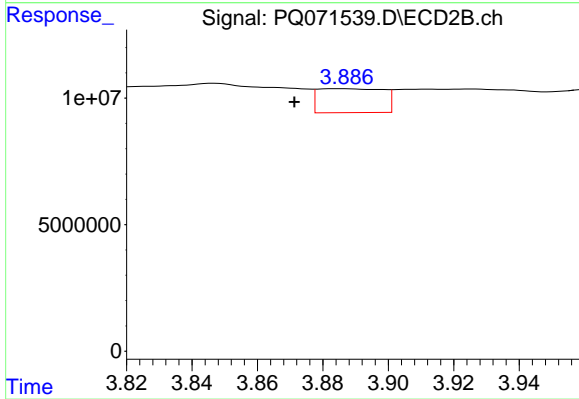
#15 AR-1232-5

R.T.: 4.288 min
 Delta R.T.: -0.008 min
 Response: 4859257
 Conc: 44.96 ng/ml



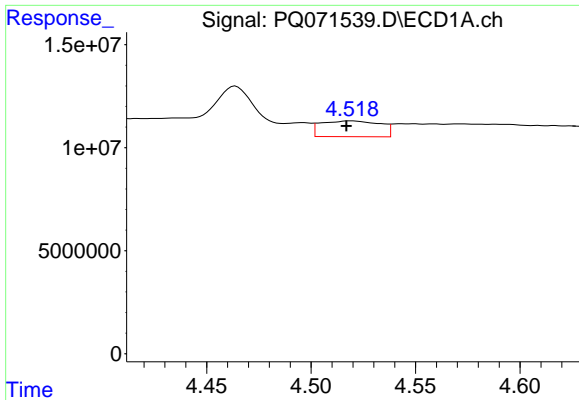
#16 AR-1242-1

R.T.: 4.496 min
 Delta R.T.: -0.002 min
 Response: 5744940
 Conc: 22.03 ng/ml



#16 AR-1242-1

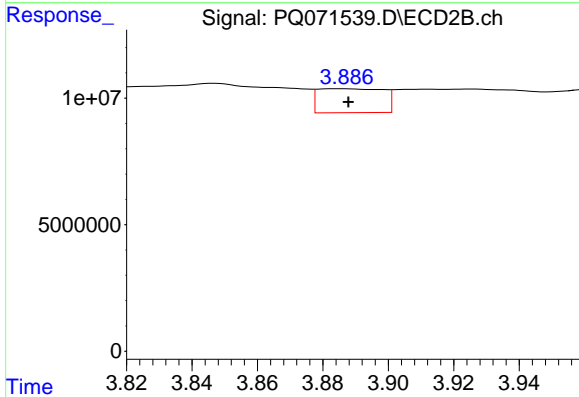
R.T.: 3.887 min
 Delta R.T.: 0.016 min
 Response: 13074444
 Conc: 45.16 ng/ml



#17 AR-1242-2

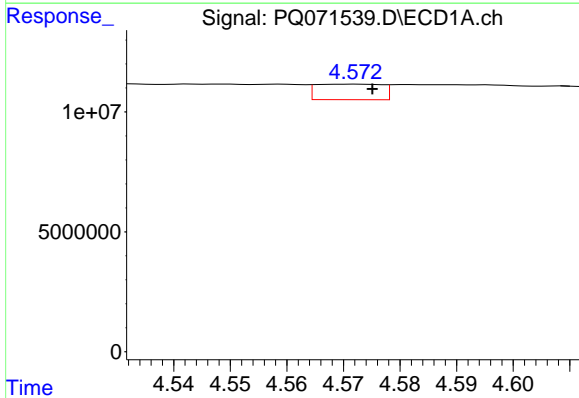
R.T.: 4.519 min
 Delta R.T.: 0.002 min
 Response: 15087595
 Conc: 39.62 ng/ml

Instrument :
 ECD_Q
 ClientSampleId :
 SB-1125-12B



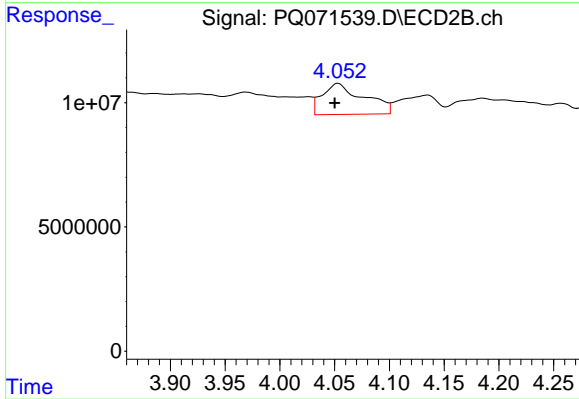
#17 AR-1242-2

R.T.: 3.887 min
 Delta R.T.: 0.000 min
 Response: 13074444
 Conc: 32.46 ng/ml



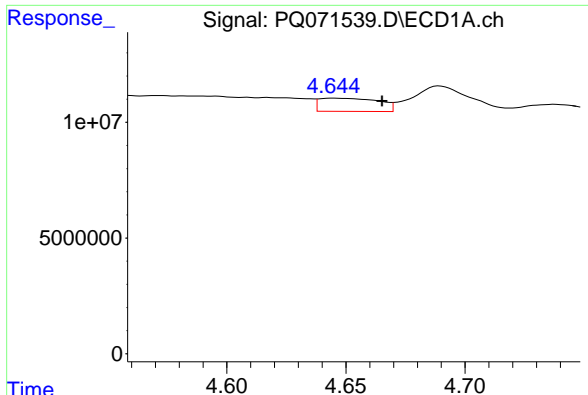
#18 AR-1242-3

R.T.: 4.572 min
 Delta R.T.: -0.003 min
 Response: 5235548
 Conc: 21.52 ng/ml



#18 AR-1242-3

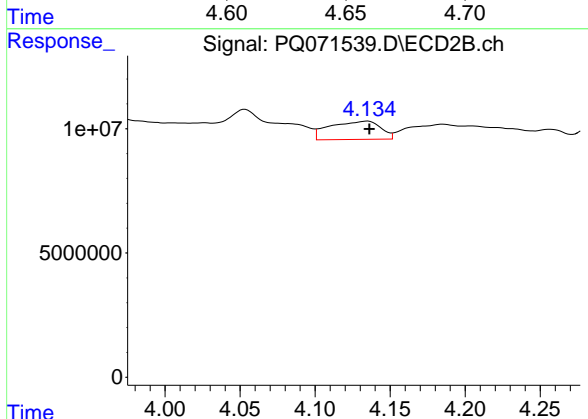
R.T.: 4.053 min
 Delta R.T.: 0.003 min
 Response: 33011036
 Conc: 141.14 ng/ml



#19 AR-1242-4

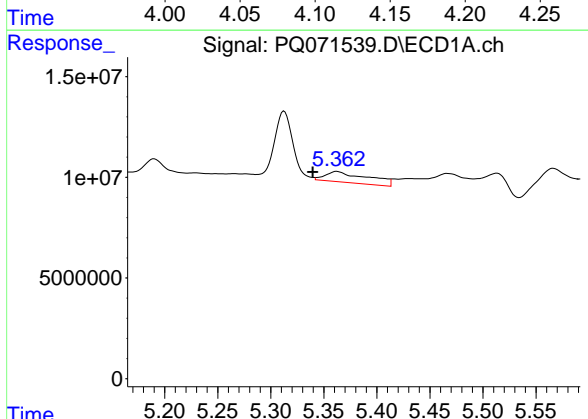
R.T.: 4.644 min
 Delta R.T.: -0.021 min
 Response: 9930113
 Conc: 51.10 ng/ml

Instrument :
 ECD_Q
 ClientSampleId :
 SB-1125-12B



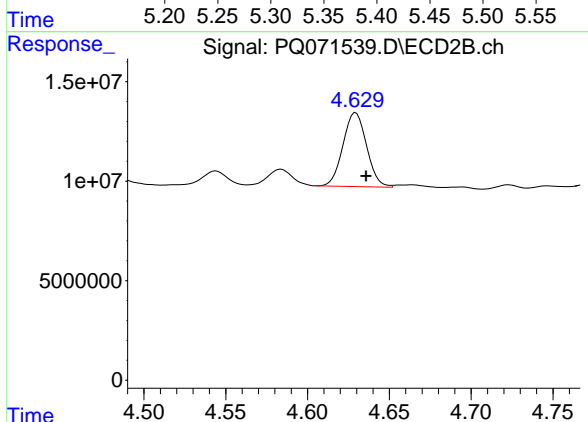
#19 AR-1242-4

R.T.: 4.135 min
 Delta R.T.: -0.001 min
 Response: 17250512
 Conc: 86.33 ng/ml



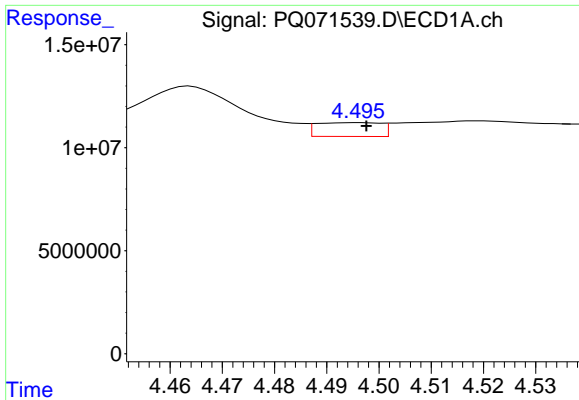
#20 AR-1242-5

R.T.: 5.362 min
 Delta R.T.: 0.023 min
 Response: 15058281
 Conc: 75.37 ng/ml



#20 AR-1242-5

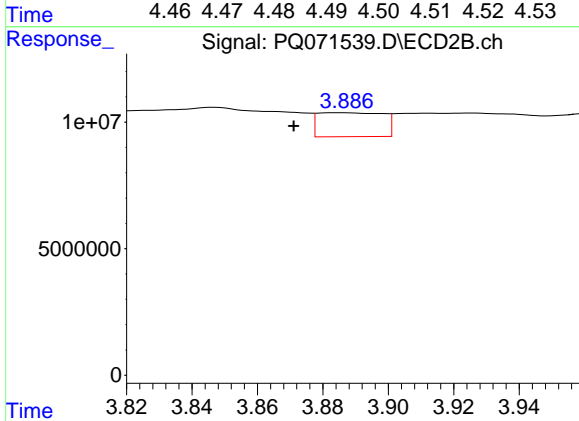
R.T.: 4.629 min
 Delta R.T.: -0.006 min
 Response: 37297689
 Conc: 141.66 ng/ml



#21 AR-1248-1

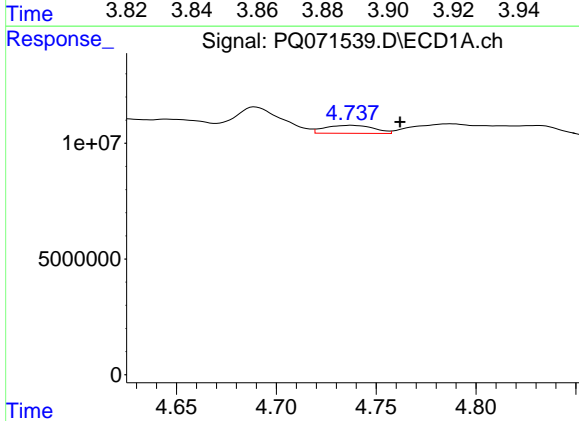
R.T.: 4.496 min
 Delta R.T.: -0.001 min
 Response: 5744940
 Conc: 30.16 ng/ml

Instrument :
 ECD_Q
 ClientSampleId :
 SB-1125-12B



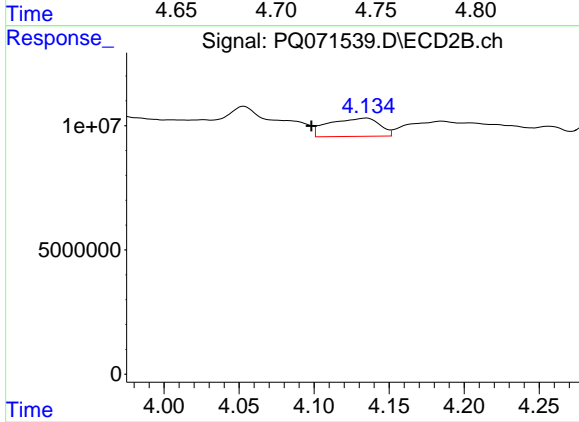
#21 AR-1248-1

R.T.: 3.887 min
 Delta R.T.: 0.016 min
 Response: 13074444
 Conc: 61.42 ng/ml



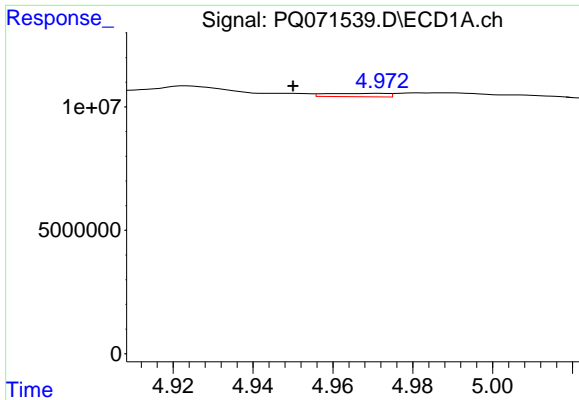
#22 AR-1248-2

R.T.: 4.738 min
 Delta R.T.: -0.024 min
 Response: 5881107
 Conc: 24.17 ng/ml



#22 AR-1248-2

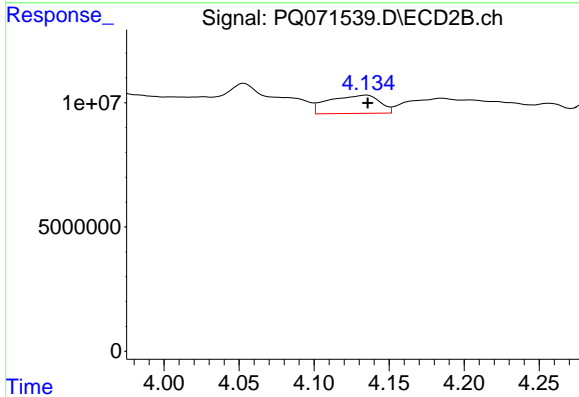
R.T.: 4.135 min
 Delta R.T.: 0.037 min
 Response: 17250512
 Conc: 60.74 ng/ml



#23 AR-1248-3

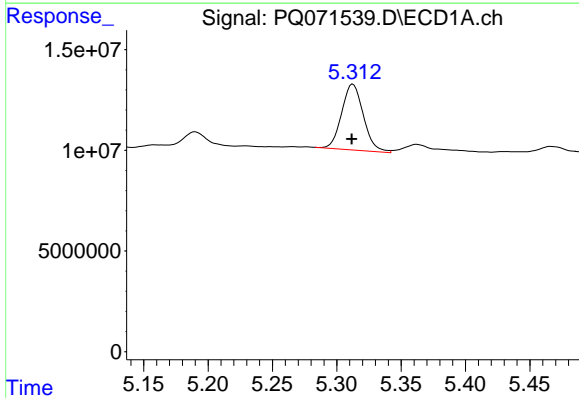
R.T.: 4.972 min
 Delta R.T.: 0.022 min
 Response: 1454360
 Conc: 4.95 ng/ml

Instrument :
 ECD_Q
 ClientSampleId :
 SB-1125-12B



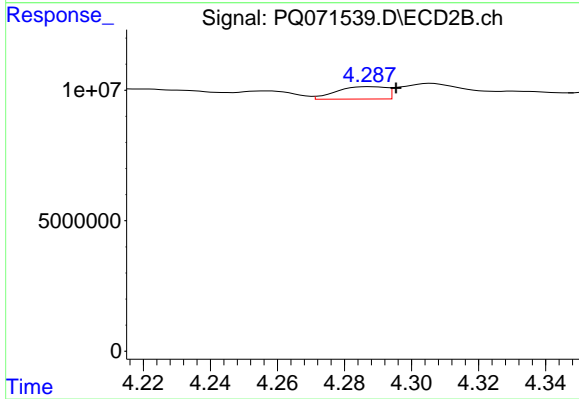
#23 AR-1248-3

R.T.: 4.135 min
 Delta R.T.: 0.000 min
 Response: 17250512
 Conc: 61.58 ng/ml



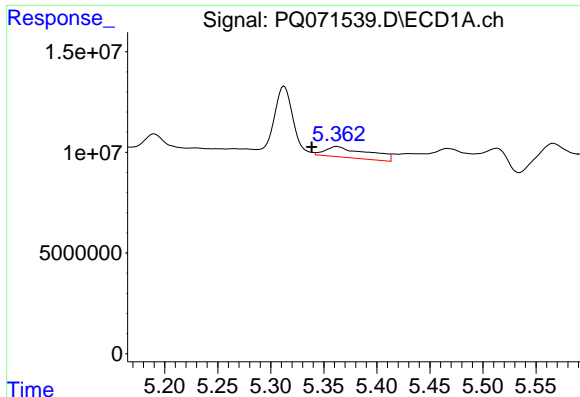
#24 AR-1248-4

R.T.: 5.313 min
 Delta R.T.: 0.000 min
 Response: 38453791
 Conc: 146.28 ng/ml



#24 AR-1248-4

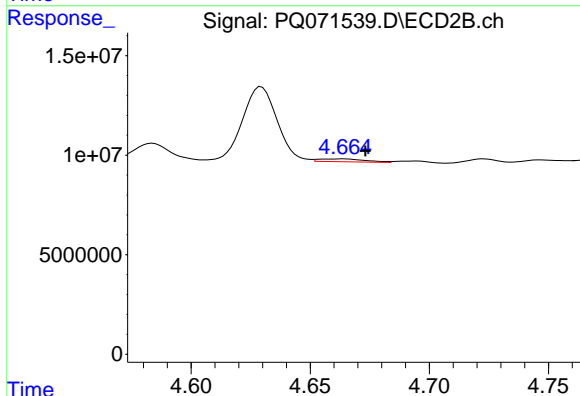
R.T.: 4.288 min
 Delta R.T.: -0.008 min
 Response: 4859257
 Conc: 14.03 ng/ml



#25 AR-1248-5

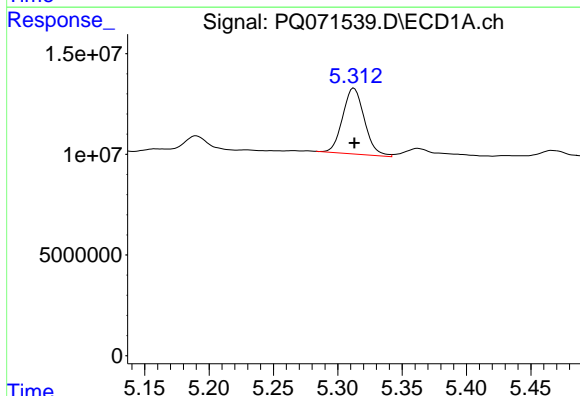
R.T.: 5.362 min
 Delta R.T.: 0.024 min
 Response: 15058281
 Conc: 44.51 ng/ml

Instrument :
 ECD_Q
 ClientSampleId :
 SB-1125-12B



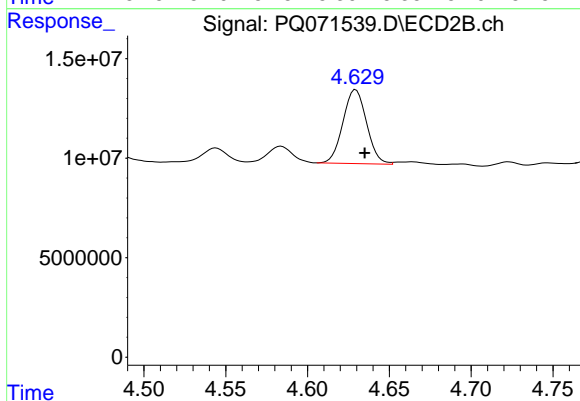
#25 AR-1248-5

R.T.: 4.664 min
 Delta R.T.: -0.009 min
 Response: 1942355
 Conc: 5.57 ng/ml



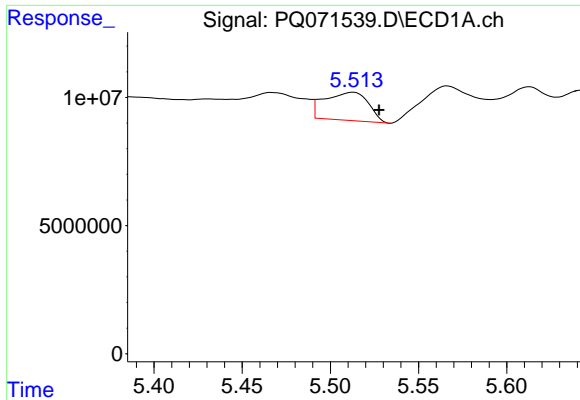
#26 AR-1254-1

R.T.: 5.313 min
 Delta R.T.: 0.000 min
 Response: 38453791
 Conc: 110.70 ng/ml



#26 AR-1254-1

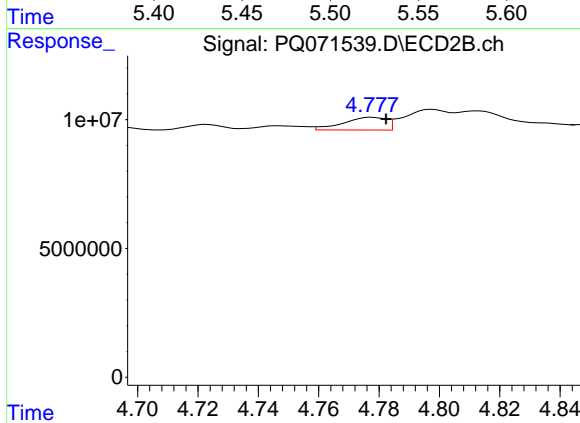
R.T.: 4.629 min
 Delta R.T.: -0.005 min
 Response: 37297689
 Conc: 69.60 ng/ml



#27 AR-1254-2

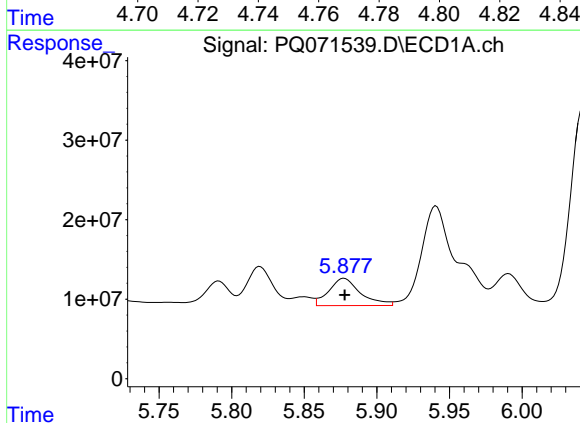
R.T.: 5.513 min
 Delta R.T.: -0.015 min
 Response: 19014204
 Conc: 35.09 ng/ml

Instrument :
 ECD_Q
 ClientSampleId :
 SB-1125-12B



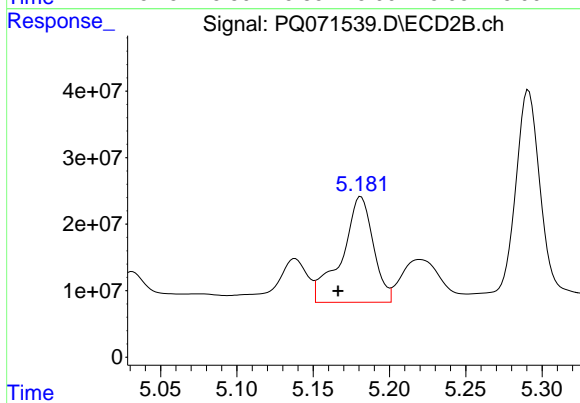
#27 AR-1254-2

R.T.: 4.778 min
 Delta R.T.: -0.005 min
 Response: 4968069
 Conc: 10.83 ng/ml



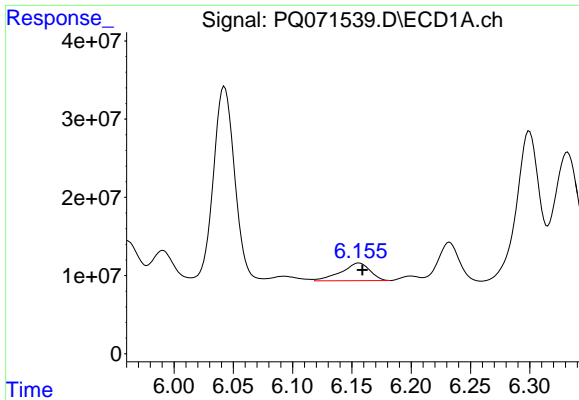
#28 AR-1254-3

R.T.: 5.877 min
 Delta R.T.: 0.000 min
 Response: 52165399
 Conc: 90.59 ng/ml



#28 AR-1254-3

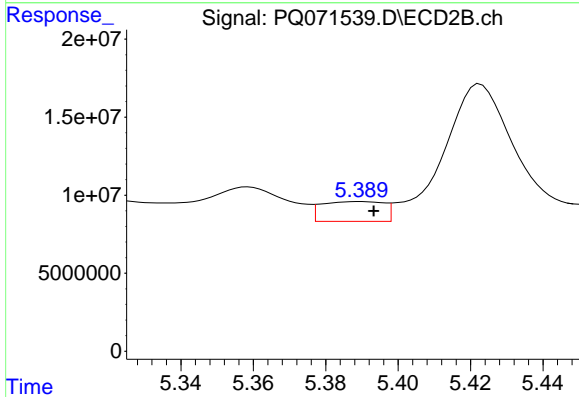
R.T.: 5.181 min
 Delta R.T.: 0.015 min
 Response: 228571362
 Conc: 301.03 ng/ml



#29 AR-1254-4

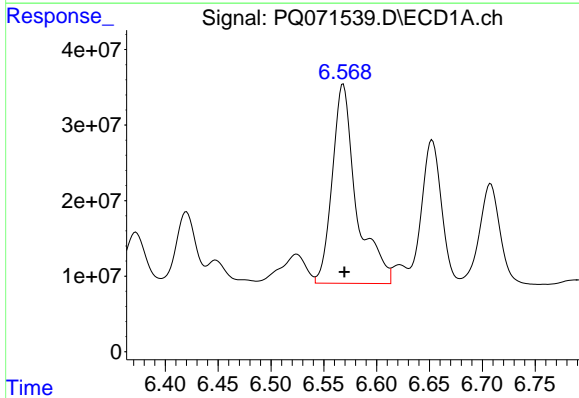
R.T.: 6.156 min
 Delta R.T.: -0.003 min
 Response: 37926840
 Conc: 89.77 ng/ml

Instrument :
 ECD_Q
 ClientSampleId :
 SB-1125-12B



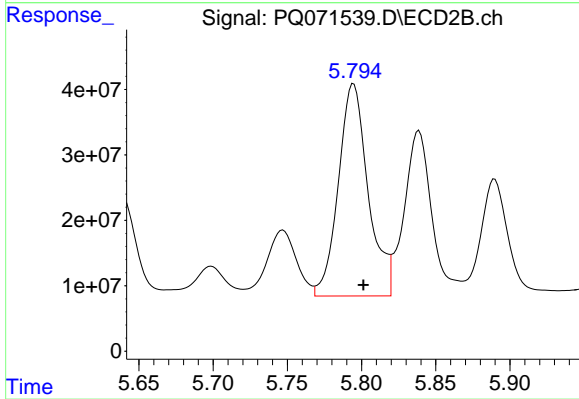
#29 AR-1254-4

R.T.: 5.390 min
 Delta R.T.: -0.004 min
 Response: 15141420
 Conc: 30.29 ng/ml



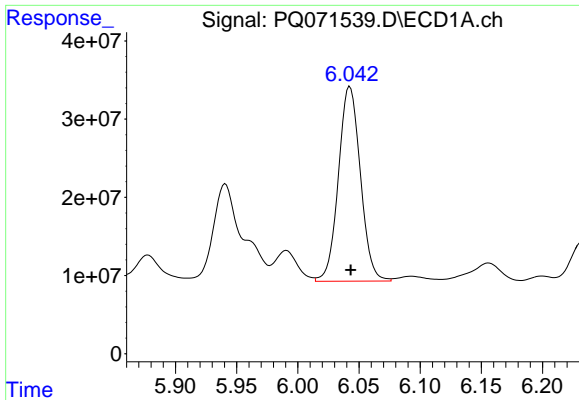
#30 AR-1254-5

R.T.: 6.568 min
 Delta R.T.: -0.001 min
 Response: 419382764
 Conc: 912.43 ng/ml



#30 AR-1254-5

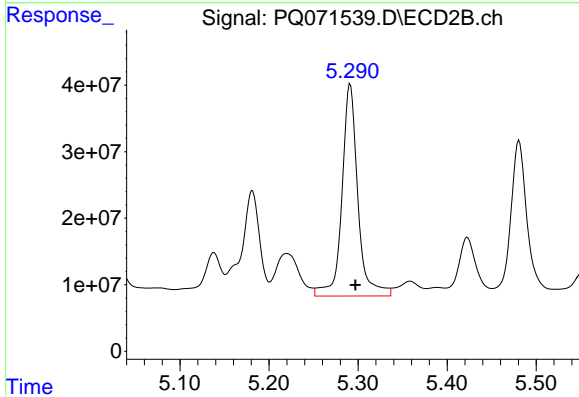
R.T.: 5.795 min
 Delta R.T.: -0.007 min
 Response: 453035684
 Conc: 654.46 ng/ml



#31 AR-1260-1

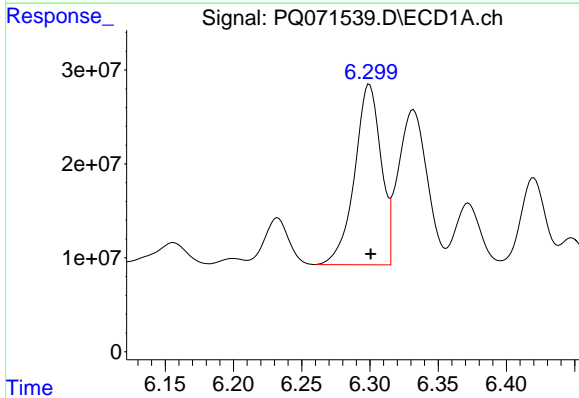
R.T.: 6.043 min
 Delta R.T.: 0.000 min
 Response: 311410479
 Conc: 695.89 ng/ml

Instrument :
 ECD_Q
 ClientSampleId :
 SB-1125-12B



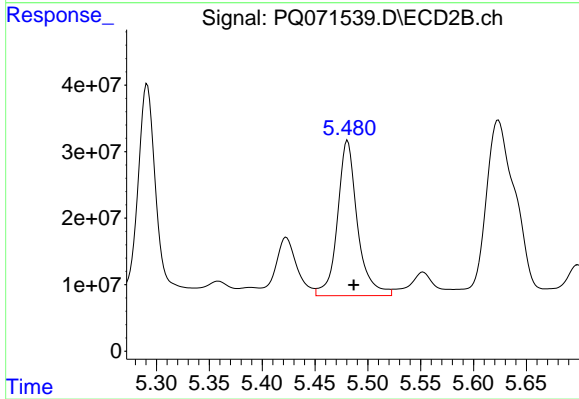
#31 AR-1260-1

R.T.: 5.291 min
 Delta R.T.: -0.006 min
 Response: 396875326
 Conc: 795.46 ng/ml



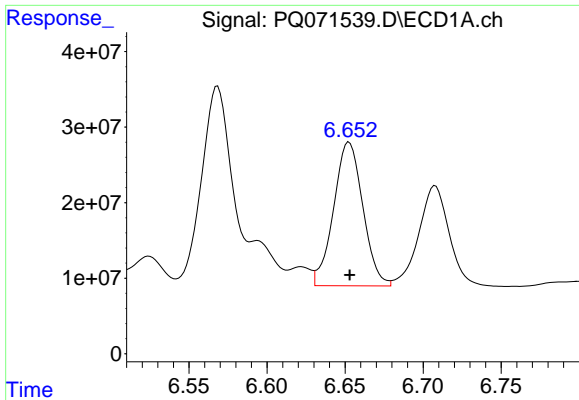
#32 AR-1260-2

R.T.: 6.300 min
 Delta R.T.: -0.001 min
 Response: 258499252
 Conc: 505.95 ng/ml



#32 AR-1260-2

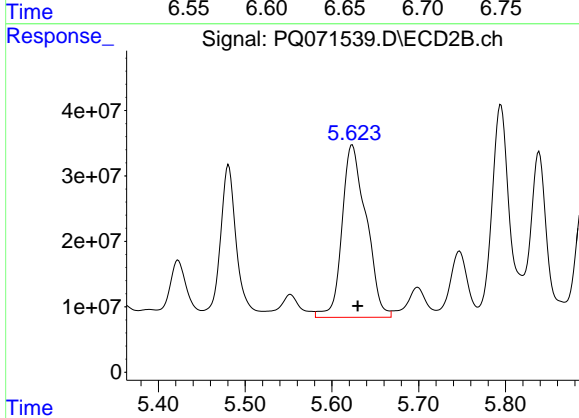
R.T.: 5.481 min
 Delta R.T.: -0.006 min
 Response: 307211659
 Conc: 506.64 ng/ml



#33 AR-1260-3

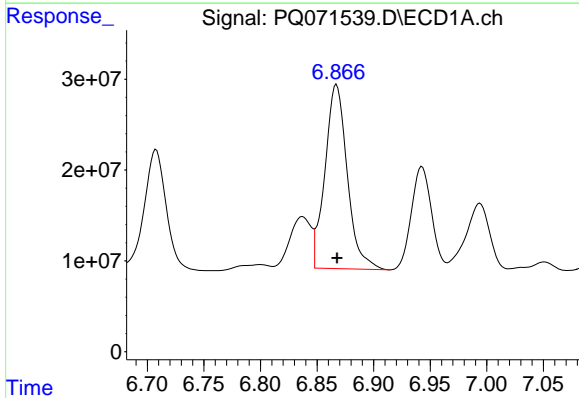
R.T.: 6.653 min
 Delta R.T.: 0.000 min
 Response: 248481784
 Conc: 649.23 ng/ml

Instrument :
 ECD_Q
 ClientSampleId :
 SB-1125-12B



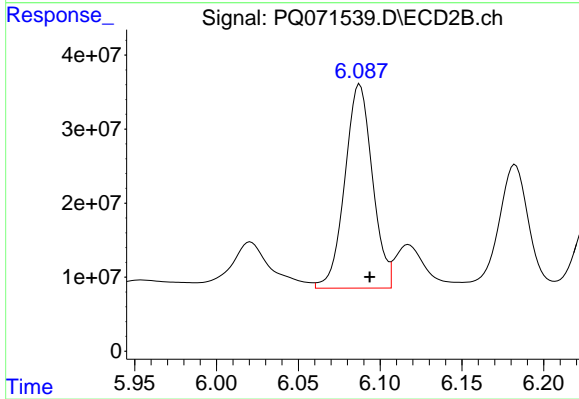
#33 AR-1260-3

R.T.: 5.623 min
 Delta R.T.: -0.006 min
 Response: 511616788
 Conc: 865.41 ng/ml



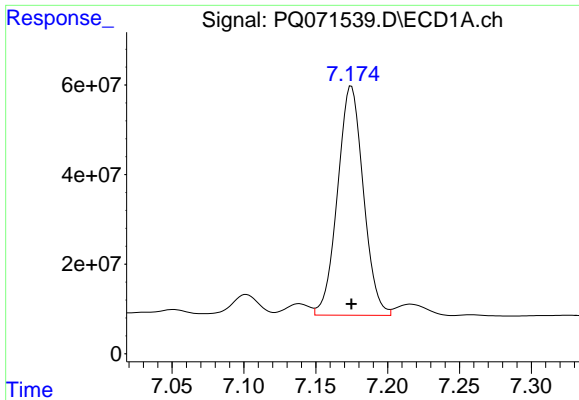
#34 AR-1260-4

R.T.: 6.867 min
 Delta R.T.: 0.000 min
 Response: 278092180
 Conc: 665.06 ng/ml



#34 AR-1260-4

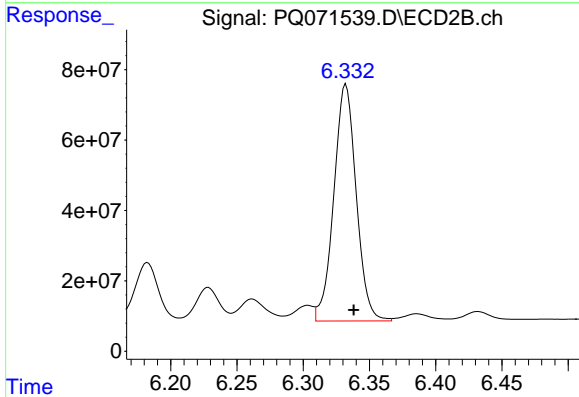
R.T.: 6.088 min
 Delta R.T.: -0.006 min
 Response: 322836793
 Conc: 651.70 ng/ml



#35 AR-1260-5

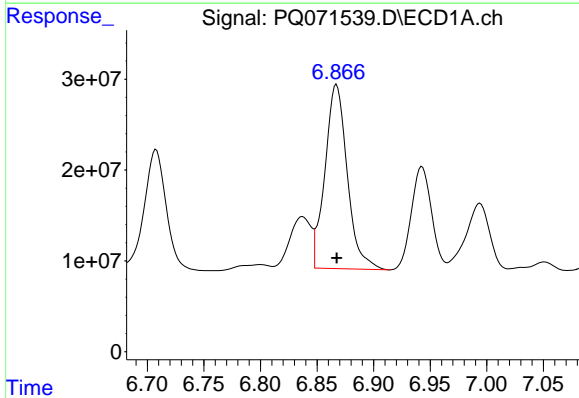
R.T.: 7.175 min
 Delta R.T.: 0.000 min
 Response: 639094526
 Conc: 767.92 ng/ml

Instrument :
 ECD_Q
 ClientSampleId :
 SB-1125-12B



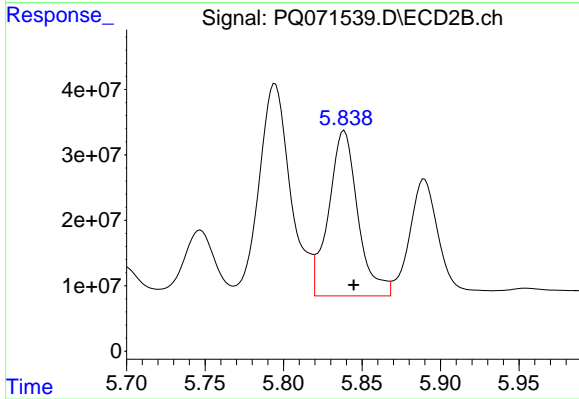
#35 AR-1260-5

R.T.: 6.332 min
 Delta R.T.: -0.006 min
 Response: 791795539
 Conc: 689.55 ng/ml



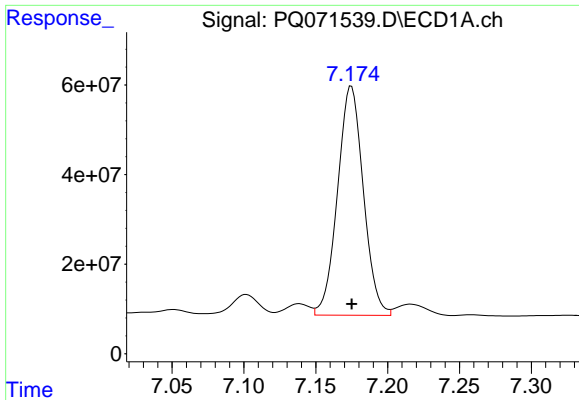
#36 AR-1262-1

R.T.: 6.867 min
 Delta R.T.: 0.000 min
 Response: 278092180
 Conc: 595.94 ng/ml



#36 AR-1262-1

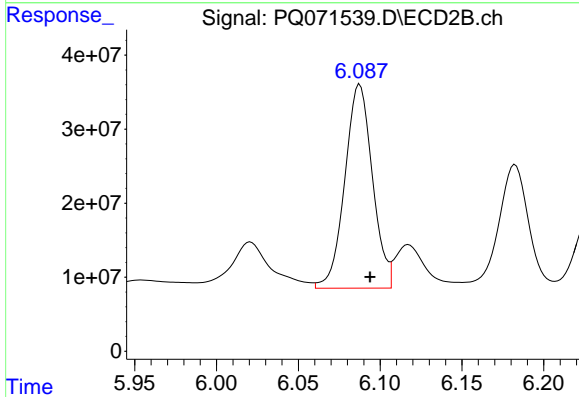
R.T.: 5.839 min
 Delta R.T.: -0.006 min
 Response: 328319578
 Conc: 513.39 ng/ml



#37 AR-1262-2

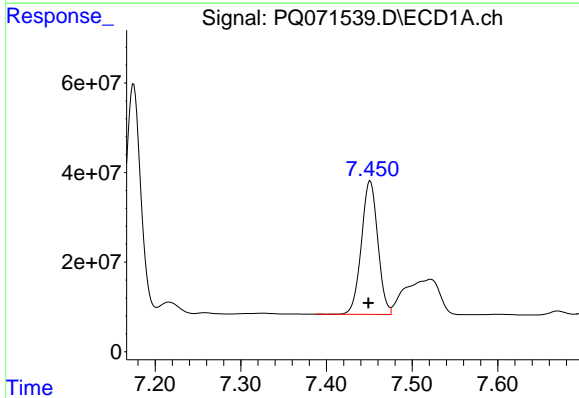
R.T.: 7.175 min
 Delta R.T.: 0.000 min
 Response: 639094526
 Conc: 751.59 ng/ml

Instrument :
 ECD_Q
 ClientSampleId :
 SB-1125-12B



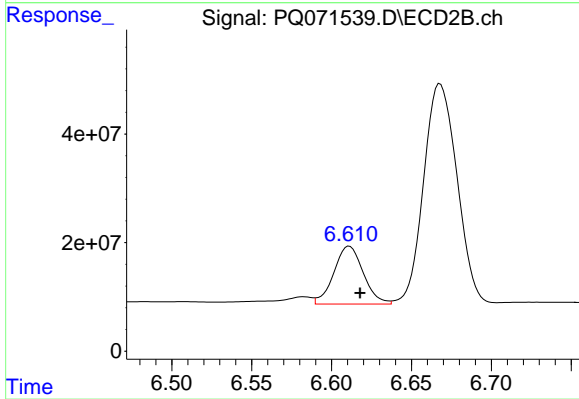
#37 AR-1262-2

R.T.: 6.088 min
 Delta R.T.: -0.006 min
 Response: 322836793
 Conc: 543.19 ng/ml



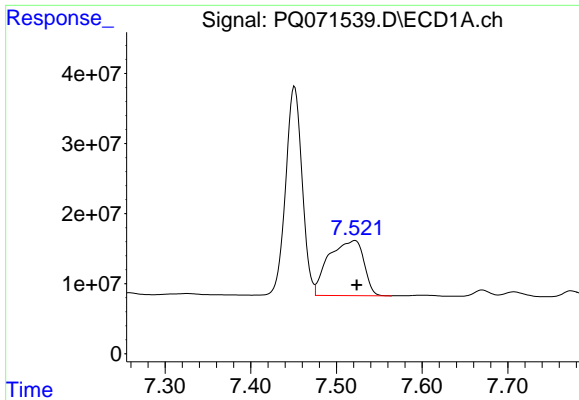
#38 AR-1262-3

R.T.: 7.451 min
 Delta R.T.: 0.002 min
 Response: 396021148
 Conc: 706.08 ng/ml



#38 AR-1262-3

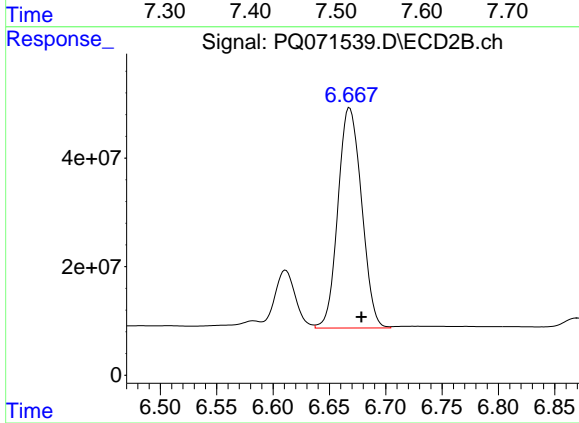
R.T.: 6.611 min
 Delta R.T.: -0.007 min
 Response: 136886468
 Conc: 286.58 ng/ml



#39 AR-1262-4

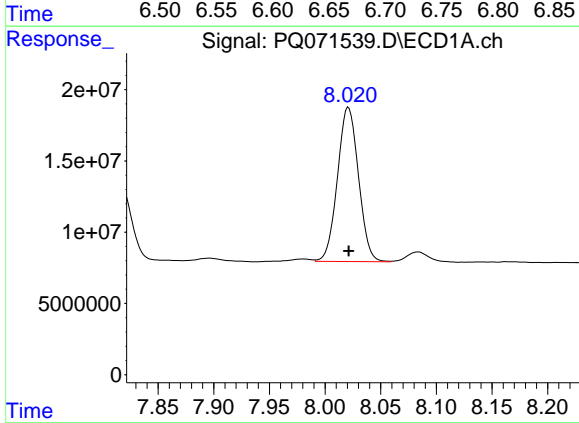
R.T.: 7.522 min
 Delta R.T.: -0.002 min
 Response: 223808194
 Conc: 510.67 ng/ml

Instrument :
 ECD_Q
 ClientSampleId :
 SB-1125-12B



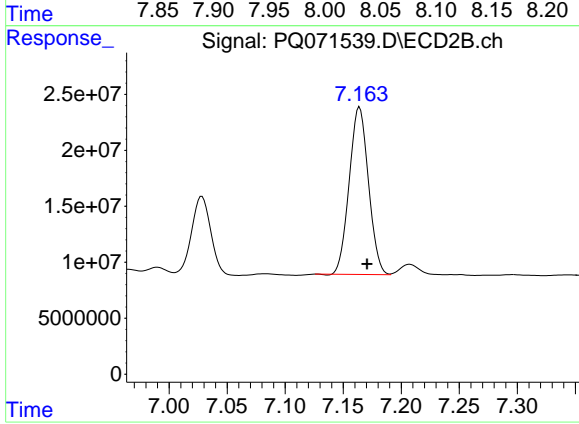
#39 AR-1262-4

R.T.: 6.668 min
 Delta R.T.: -0.010 min
 Response: 591370650
 Conc: 661.23 ng/ml



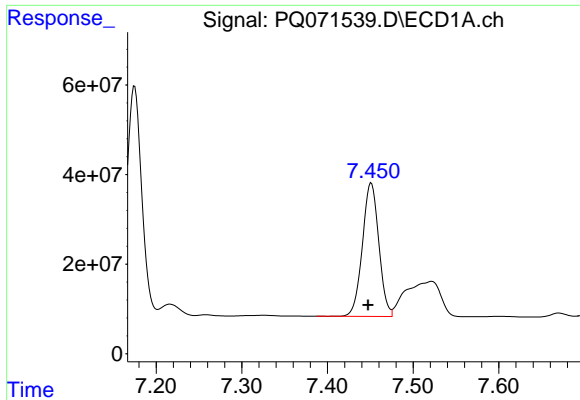
#40 AR-1262-5

R.T.: 8.021 min
 Delta R.T.: 0.000 min
 Response: 142021227
 Conc: 500.12 ng/ml



#40 AR-1262-5

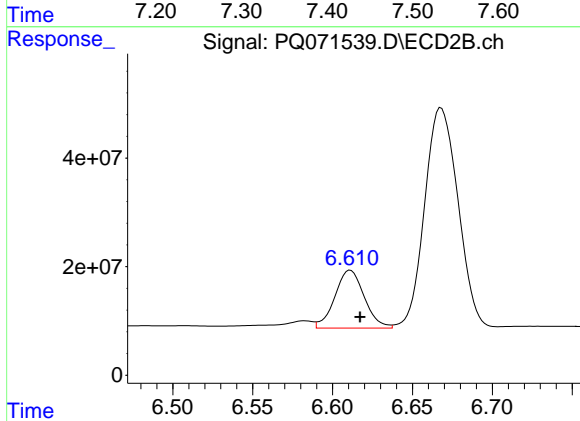
R.T.: 7.164 min
 Delta R.T.: -0.007 min
 Response: 172655683
 Conc: 403.09 ng/ml



#41 AR-1268-1

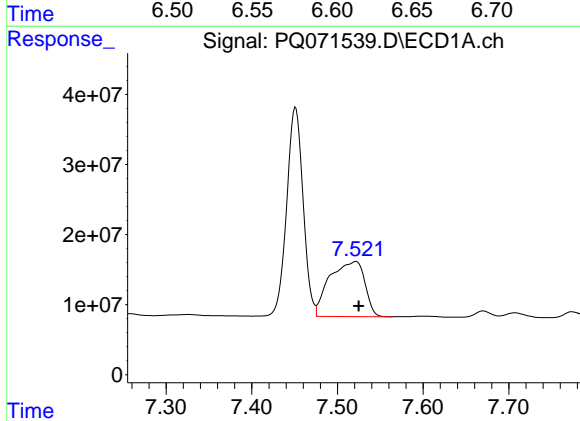
R.T.: 7.451 min
 Delta R.T.: 0.004 min
 Response: 396021148
 Conc: 387.97 ng/ml

Instrument :
 ECD_Q
 ClientSampleId :
 SB-1125-12B



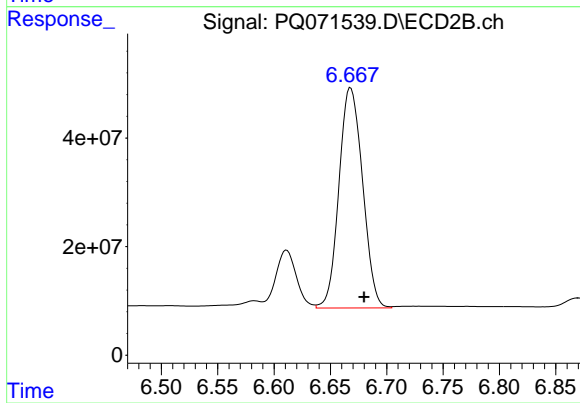
#41 AR-1268-1

R.T.: 6.611 min
 Delta R.T.: -0.006 min
 Response: 136886468
 Conc: 95.06 ng/ml



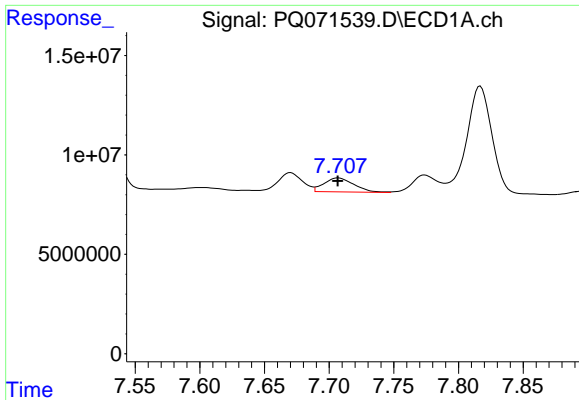
#42 AR-1268-2

R.T.: 7.522 min
 Delta R.T.: -0.003 min
 Response: 223808194
 Conc: 236.40 ng/ml



#42 AR-1268-2

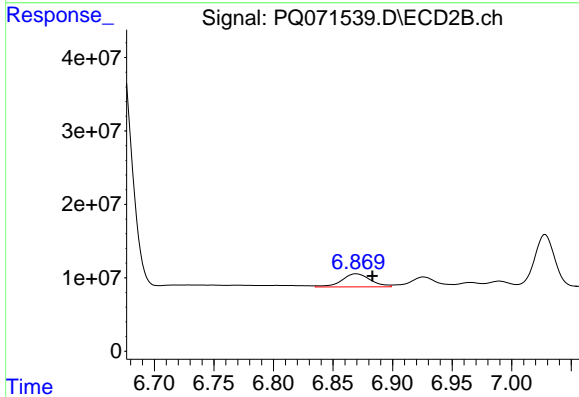
R.T.: 6.668 min
 Delta R.T.: -0.012 min
 Response: 591370650
 Conc: 438.80 ng/ml



#43 AR-1268-3

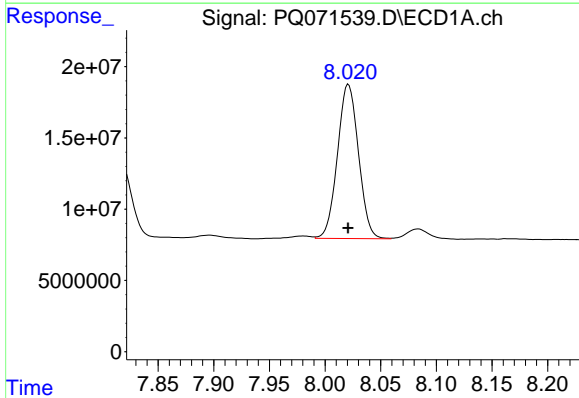
R.T.: 7.707 min
 Delta R.T.: 0.000 min
 Response: 11378235
 Conc: 14.63 ng/ml

Instrument :
 ECD_Q
 ClientSampleId :
 SB-1125-12B



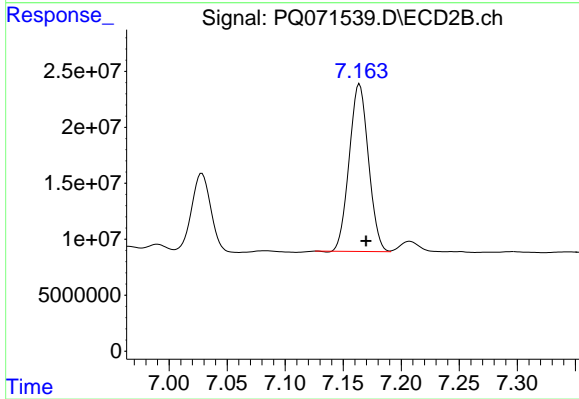
#43 AR-1268-3

R.T.: 6.870 min
 Delta R.T.: -0.013 min
 Response: 30028657
 Conc: 26.44 ng/ml



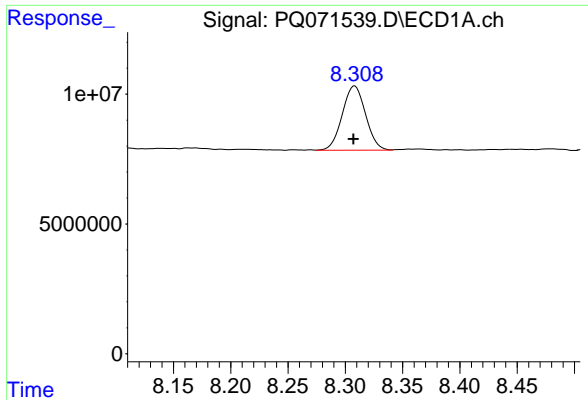
#44 AR-1268-4

R.T.: 8.021 min
 Delta R.T.: 0.000 min
 Response: 142021227
 Conc: 419.77 ng/ml



#44 AR-1268-4

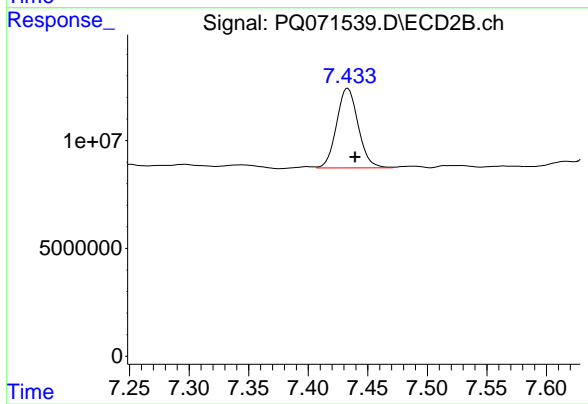
R.T.: 7.164 min
 Delta R.T.: -0.006 min
 Response: 172655683
 Conc: 340.45 ng/ml



#45 AR-1268-5

R.T.: 8.308 min
Delta R.T.: 0.001 min
Response: 35087011
Conc: 15.29 ng/ml

Instrument :
ECD_Q
ClientSampleId :
SB-1125-12B



#45 AR-1268-5

R.T.: 7.433 min
Delta R.T.: -0.006 min
Response: 46601085
Conc: 13.16 ng/ml