

Data Path : Z:\pestpcbsrv\HPCHEM1\ECD_Q\Data\PQ112625\
 Data File : PQ071540.D
 Signal(s) : Signal #1: ECD1A.ch Signal #2: ECD2B.ch
 Acq On : 26 Nov 2025 15:10
 Operator : YP\AJ
 Sample : Q3719-07
 Misc :
 ALS Vial : 11 Sample Multiplier: 1

Instrument :
 ECD_Q
 ClientSampleId :
 SB-1125-14A

Integration File signal 1: autoint1.e
 Integration File signal 2: autoint2.e
 Quant Time: Nov 27 01:33:39 2025
 Quant Method : Z:\pestpcbsrv\HPCHEM1\ECD_Q\Method\PQ111825.M
 Quant Title : GC EXTRACTABLES
 QLast Update : Wed Nov 19 04:02:38 2025
 Response via : Initial Calibration
 Integrator: ChemStation

Volume Inj. : 2 µl
 Signal #1 Phase : ZB-MR1 Signal #2 Phase: ZB-MR2
 Signal #1 Info : 30Mx0.32mmx 0.50µ Signal #2 Info : 30M x 0.32mm x 0.25µm

Compound	RT#1	RT#2	Resp#1	Resp#2	ng/ml	ng/ml
System Monitoring Compounds						
1) SA Tetrachlo...	3.410	2.854	209.3E6	213.1E6	24.043	22.823
2) SA Decachlor...	8.537	7.652	127.0E6	168.5E6	20.285	18.445
Target Compounds						
3) L1 AR-1016-1	4.490	3.888	20480092	21064037	61.958	58.168
4) L1 AR-1016-2	4.516	3.888	28986868	21064037	60.945	42.884 #
5) L1 AR-1016-3	4.573	4.052	19447961	38163170	65.161	137.282 #
6) L1 AR-1016-4	4.648	4.084	25472819	12175863	103.739	54.296 #
7) L1 AR-1016-5	4.953	4.291	3425899	7929927	14.491	28.467 #
8) L2 AR-1221-1	3.586f	3.046	12294907	10218863	113.331	88.920
9) L2 AR-1221-2	3.684	3.126	12140962	13817821	153.044	161.993
10) L2 AR-1221-3	3.771	3.204	20524673	16738264	84.250	64.739
11) L3 AR-1232-1	3.771	3.204	20524673	16738264	103.983	78.942
12) L3 AR-1232-2	4.282f	3.888	49000854	21064037	478.218	97.248 #
13) L3 AR-1232-3	4.516	4.052	28986868	38163170	139.905	321.015 #
14) L3 AR-1232-4	4.648	4.132	25472819	31054120	245.326	330.731 #
15) L3 AR-1232-5	4.797	4.291	8813253	7929927	104.332	73.375 #
16) L4 AR-1242-1	4.490	3.888	20480092	21064037	78.547	72.756
17) L4 AR-1242-2	4.516	3.888	28986868	21064037	76.126	52.290 #
18) L4 AR-1242-3	4.573	4.052	19447961	38163170	79.952	163.163 #
19) L4 AR-1242-4	4.648	4.132	25472819	31054120	131.091	155.404
20) L4 AR-1242-5	5.335	4.630	5147212	3638079	25.764	13.818 #
21) L5 AR-1248-1	4.490	3.888	20480092	21064037	107.510	98.950
22) L5 AR-1248-2	4.785	4.084	14896285	12175863	61.229	42.870 #
23) L5 AR-1248-3	4.953	4.132	3425899	31054120	11.660	110.863 #
24) L5 AR-1248-4	5.322	4.291	3735578	7929927	14.210	22.893 #
25) L5 AR-1248-5	5.335	4.663	5147212	7773991	15.213	22.298 #
26) L6 AR-1254-1	5.322	4.630	3735578	3638079	10.754	6.789 #
27) L6 AR-1254-2	5.508	4.777	29751195	7783877	54.909	16.966 #
28) L6 AR-1254-3	5.877	5.163	38728998	58528486	67.258	77.082
29) L6 AR-1254-4	6.159	5.390	9298646	43501295	22.009	87.034 #
30) L6 AR-1254-5	6.569	5.797	26301178	140.9E6	57.222	203.514 #
31) L7 AR-1260-1	6.045	5.294	19509929	80123569	43.598	160.592 #
32) L7 AR-1260-2	6.287	5.480	38624641	96467659	75.599	159.089 #
33) L7 AR-1260-3	6.651	5.640	12363510	149.2E6	32.303	252.316 #
34) L7 AR-1260-4	6.867	6.087	7331607	48624251	17.534	98.156 #
35) L7 AR-1260-5	7.174	6.332	25484784	50186334	30.622	43.705 #
36) L8 AR-1262-1	6.867	5.842	7331607	72804475	15.711	113.844 #
37) L8 AR-1262-2	7.174	6.087	25484784	48624251	29.971	81.812 #
38) L8 AR-1262-3	7.449	6.634	12664349	38260205	22.580	80.100 #
39) L8 AR-1262-4	7.525	6.671	4632880	30751967	10.571	34.385 #
40) L8 AR-1262-5	8.020	7.165	5069164	4302745	17.851	10.045 #
41) L9 AR-1268-1	7.449	6.634	12664349	38260205	12.407	26.569 #

Data Path : Z:\pestpcbsrv\HPCHEM1\ECD_Q\Data\PQ112625\
 Data File : PQ071540.D
 Signal(s) : Signal #1: ECD1A.ch Signal #2: ECD2B.ch
 Acq On : 26 Nov 2025 15:10
 Operator : YP\AJ
 Sample : Q3719-07
 Misc :
 ALS Vial : 11 Sample Multiplier: 1

Instrument :
 ECD_Q
 ClientSampleId :
 SB-1125-14A

Integration File signal 1: autoint1.e
 Integration File signal 2: autoint2.e
 Quant Time: Nov 27 01:33:39 2025
 Quant Method : Z:\pestpcbsrv\HPCHEM1\ECD_Q\Method\PQ111825.M
 Quant Title : GC EXTRACTABLES
 QLast Update : Wed Nov 19 04:02:38 2025
 Response via : Initial Calibration
 Integrator: ChemStation

Volume Inj. : 2 µl
 Signal #1 Phase : ZB-MR1 Signal #2 Phase: ZB-MR2
 Signal #1 Info : 30Mx0.32mmx 0.50µ Signal #2 Info : 30M x 0.32mm x 0.25µm

	Compound	RT#1	RT#2	Resp#1	Resp#2	ng/ml	ng/ml
42)	L9 AR-1268-2	7.525	6.671	4632880	30751967	4.893	22.818 #
43)	L9 AR-1268-3	7.704	6.878	4024569	27362382	5.174	24.092 #
44)	L9 AR-1268-4	8.020	7.165	5069164	4302745	14.983	8.484 #
45)	L9 AR-1268-5	8.308	7.434	7003113	16720064	3.052	4.721 #

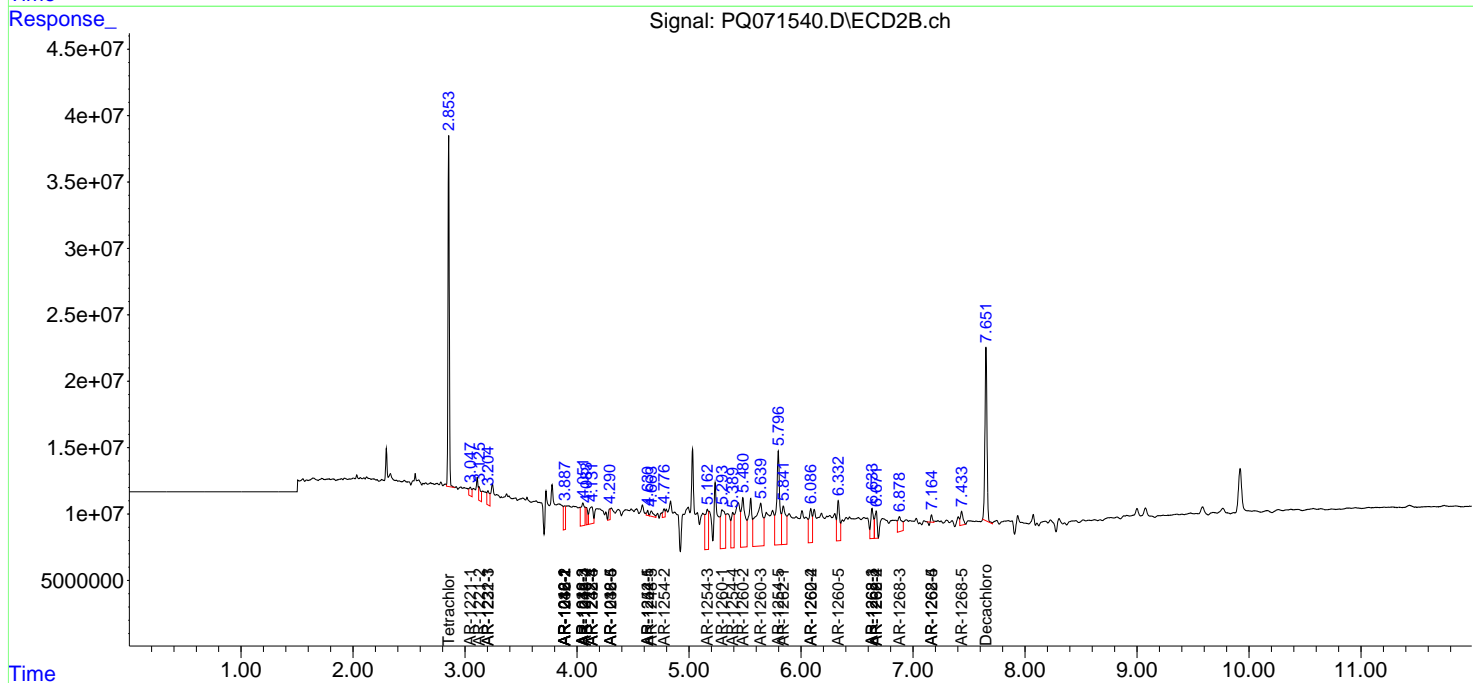
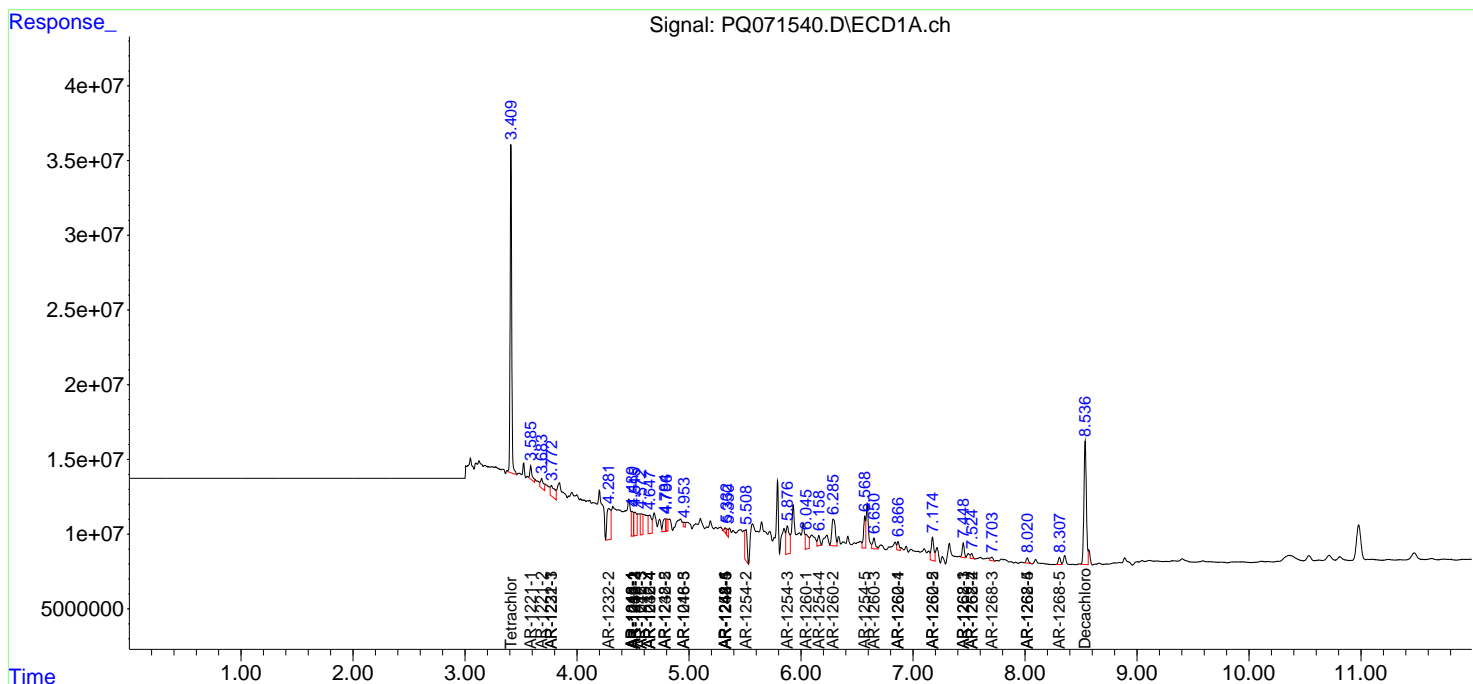
(f)=RT Delta > 1/2 Window (#)=Amounts differ by > 25% (m)=manual int.

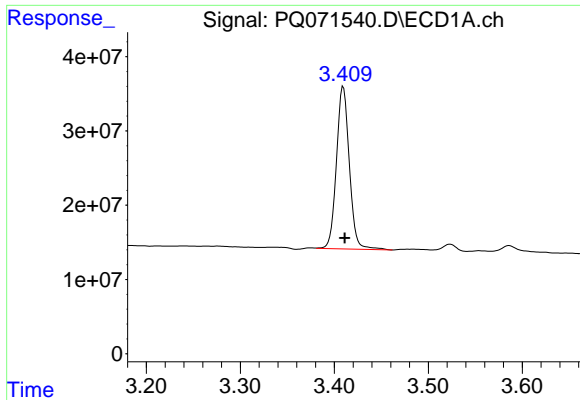
Data Path : Z:\pestpcbsrv\HPCHEM1\ECD_Q\Data\PQ112625\
 Data File : PQ071540.D
 Signal(s) : Signal #1: ECD1A.ch Signal #2: ECD2B.ch
 Acq On : 26 Nov 2025 15:10
 Operator : YP\AJ
 Sample : Q3719-07
 Misc :
 ALS Vial : 11 Sample Multiplier: 1

Instrument :
 ECD_Q
 ClientSampleId :
 SB-1125-14A

Integration File signal 1: autoint1.e
 Integration File signal 2: autoint2.e
 Quant Time: Nov 27 01:33:39 2025
 Quant Method : Z:\pestpcbsrv\HPCHEM1\ECD_Q\Method\PQ111825.M
 Quant Title : GC EXTRACTABLES
 QLast Update : Wed Nov 19 04:02:38 2025
 Response via : Initial Calibration
 Integrator: ChemStation

Volume Inj. : 2 µl
 Signal #1 Phase : ZB-MR1 Signal #2 Phase: ZB-MR2
 Signal #1 Info : 30Mx0.32mmx 0.50µ Signal #2 Info : 30M x 0.32mm x 0.25µm

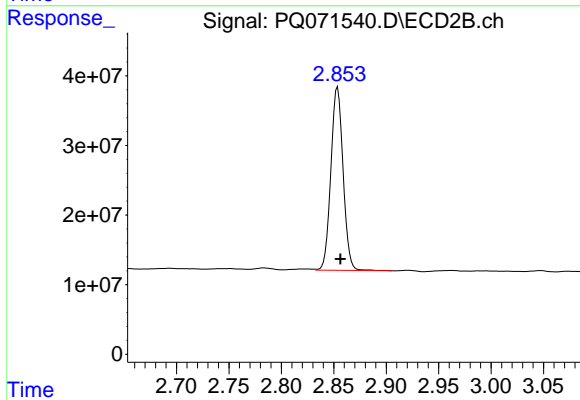




#1 Tetrachloro-m-xylene

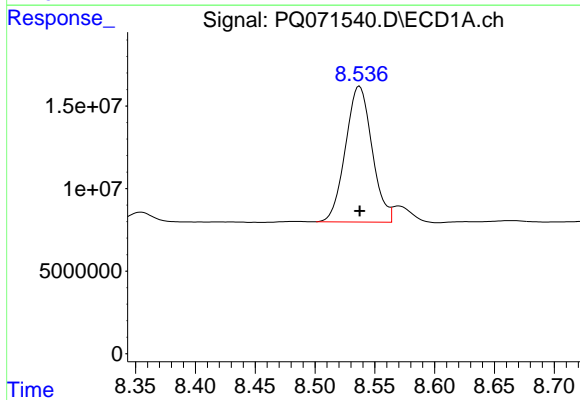
R.T.: 3.410 min
 Delta R.T.: -0.001 min
 Response: 209301625
 Conc: 24.04 ng/ml

Instrument :
 ECD_Q
 ClientSampleId :
 SB-1125-14A



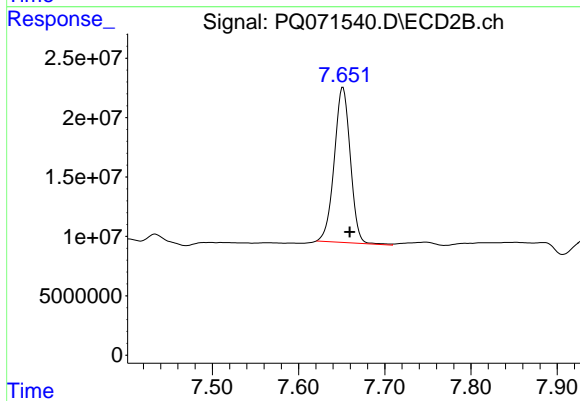
#1 Tetrachloro-m-xylene

R.T.: 2.854 min
 Delta R.T.: -0.003 min
 Response: 213089718
 Conc: 22.82 ng/ml



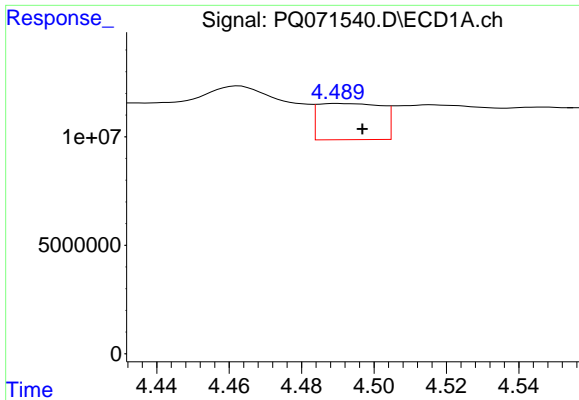
#2 Decachlorobiphenyl

R.T.: 8.537 min
 Delta R.T.: 0.000 min
 Response: 127014856
 Conc: 20.28 ng/ml



#2 Decachlorobiphenyl

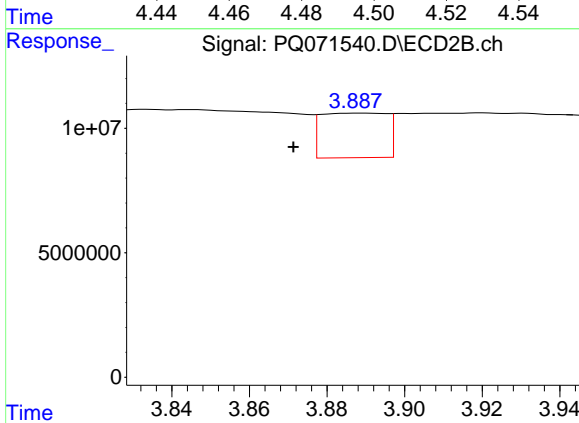
R.T.: 7.652 min
 Delta R.T.: -0.008 min
 Response: 168548504
 Conc: 18.45 ng/ml



#3 AR-1016-1

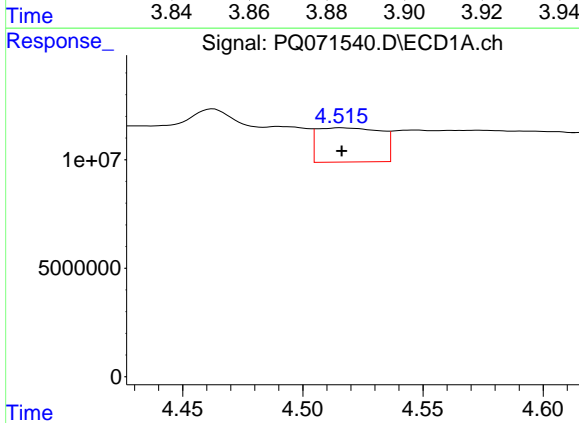
R.T.: 4.490 min
 Delta R.T.: -0.007 min
 Response: 20480092
 Conc: 61.96 ng/ml

Instrument :
 ECD_Q
 ClientSampleId :
 SB-1125-14A



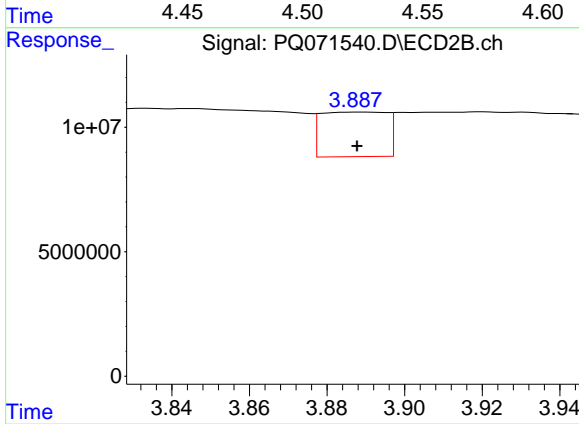
#3 AR-1016-1

R.T.: 3.888 min
 Delta R.T.: 0.017 min
 Response: 21064037
 Conc: 58.17 ng/ml



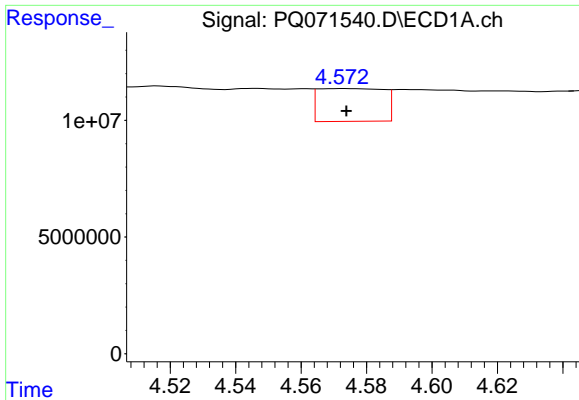
#4 AR-1016-2

R.T.: 4.516 min
 Delta R.T.: 0.000 min
 Response: 28986868
 Conc: 60.95 ng/ml



#4 AR-1016-2

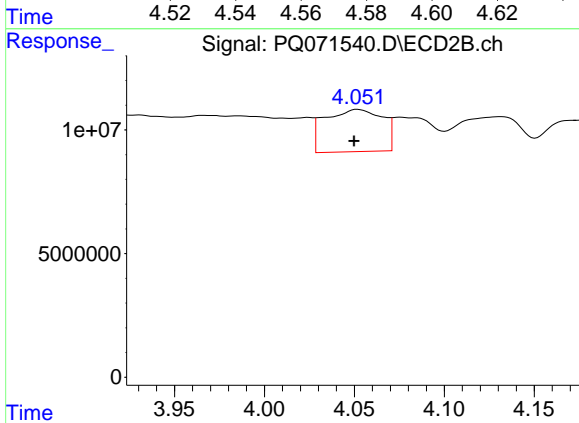
R.T.: 3.888 min
 Delta R.T.: 0.000 min
 Response: 21064037
 Conc: 42.88 ng/ml



#5 AR-1016-3

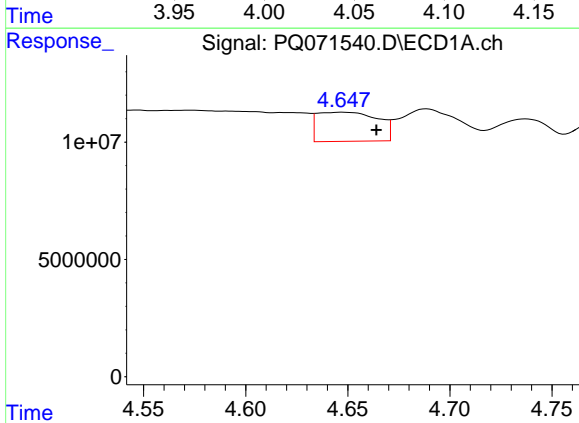
R.T.: 4.573 min
 Delta R.T.: -0.001 min
 Response: 19447961
 Conc: 65.16 ng/ml

Instrument :
 ECD_Q
 ClientSampleId :
 SB-1125-14A



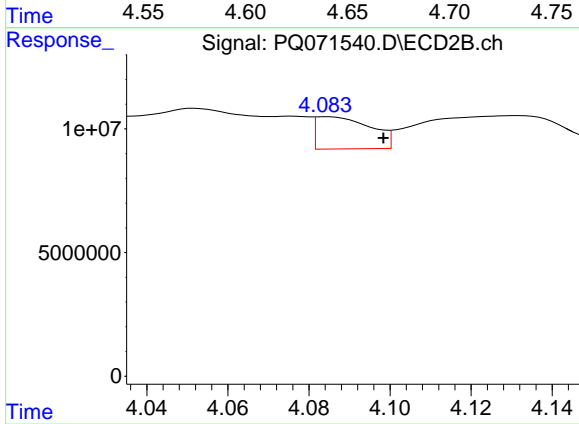
#5 AR-1016-3

R.T.: 4.052 min
 Delta R.T.: 0.002 min
 Response: 38163170
 Conc: 137.28 ng/ml



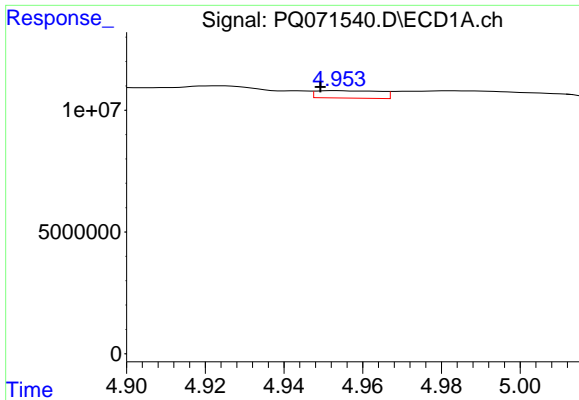
#6 AR-1016-4

R.T.: 4.648 min
 Delta R.T.: -0.016 min
 Response: 25472819
 Conc: 103.74 ng/ml



#6 AR-1016-4

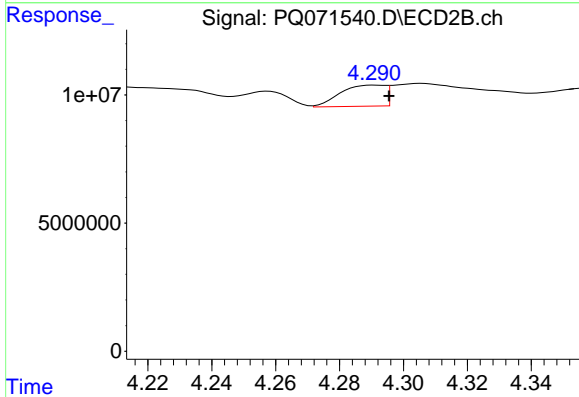
R.T.: 4.084 min
 Delta R.T.: -0.014 min
 Response: 12175863
 Conc: 54.30 ng/ml



#7 AR-1016-5

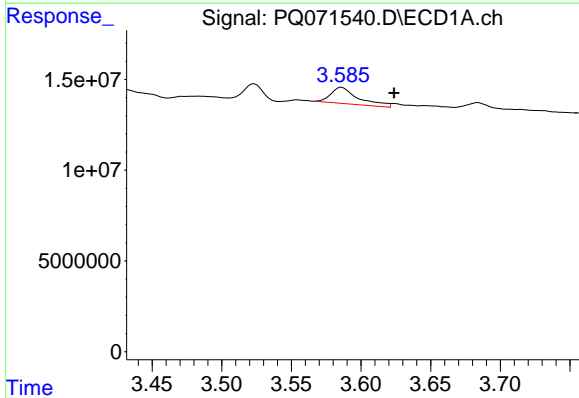
R.T.: 4.953 min
 Delta R.T.: 0.004 min
 Response: 3425899
 Conc: 14.49 ng/ml

Instrument :
 ECD_Q
 ClientSampleId :
 SB-1125-14A



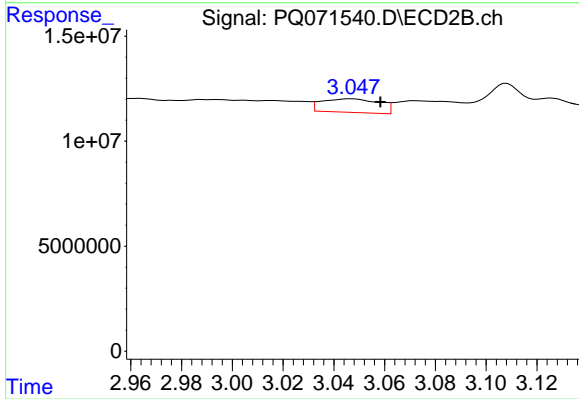
#7 AR-1016-5

R.T.: 4.291 min
 Delta R.T.: -0.004 min
 Response: 7929927
 Conc: 28.47 ng/ml



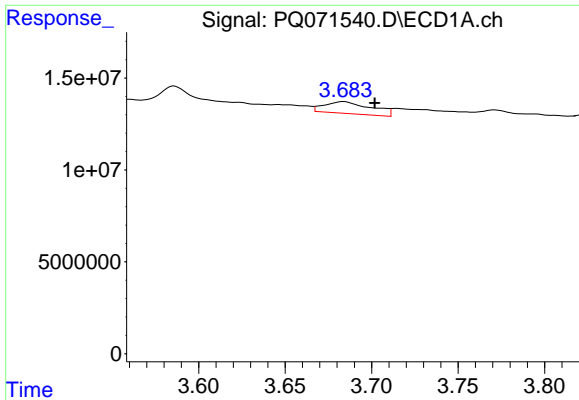
#8 AR-1221-1

R.T.: 3.586 min
 Delta R.T.: -0.038 min
 Response: 12294907
 Conc: 113.33 ng/ml



#8 AR-1221-1

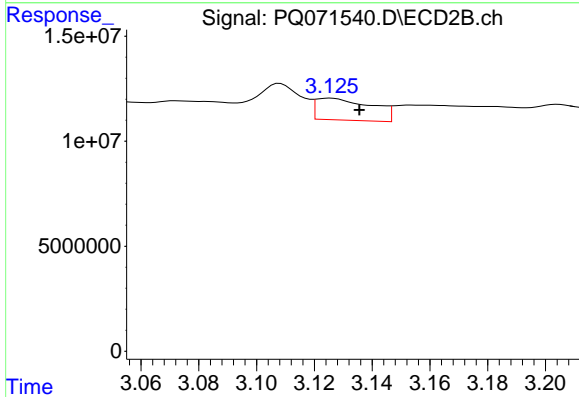
R.T.: 3.046 min
 Delta R.T.: -0.012 min
 Response: 10218863
 Conc: 88.92 ng/ml



#9 AR-1221-2

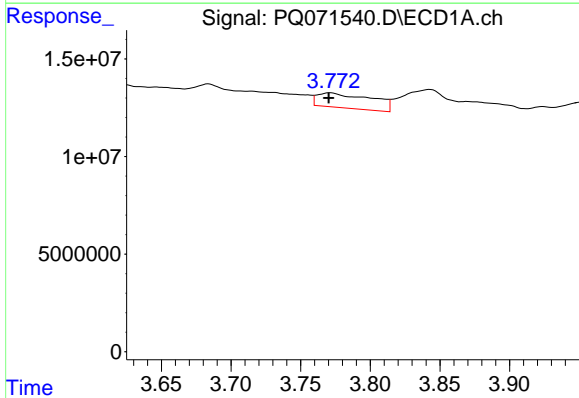
R.T.: 3.684 min
 Delta R.T.: -0.018 min
 Response: 12140962
 Conc: 153.04 ng/ml

Instrument :
 ECD_Q
 ClientSampleId :
 SB-1125-14A



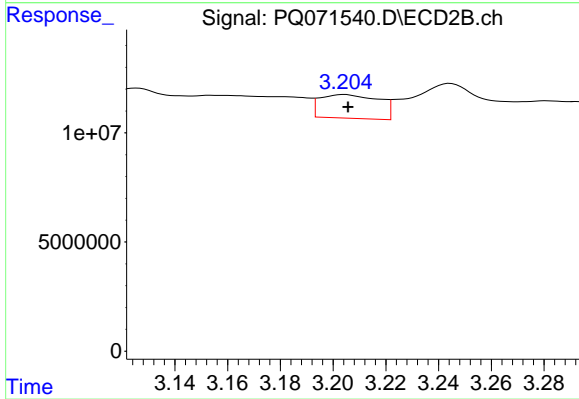
#9 AR-1221-2

R.T.: 3.126 min
 Delta R.T.: -0.010 min
 Response: 13817821
 Conc: 161.99 ng/ml



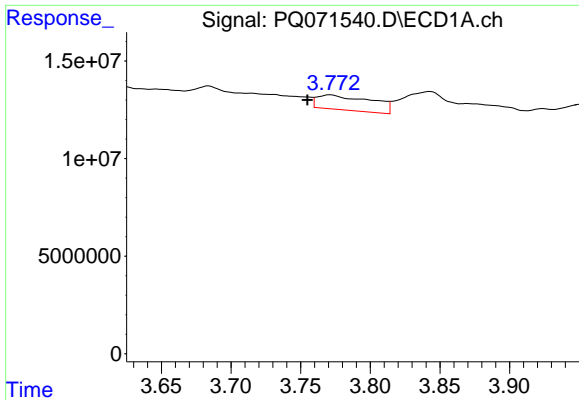
#10 AR-1221-3

R.T.: 3.771 min
 Delta R.T.: 0.000 min
 Response: 20524673
 Conc: 84.25 ng/ml



#10 AR-1221-3

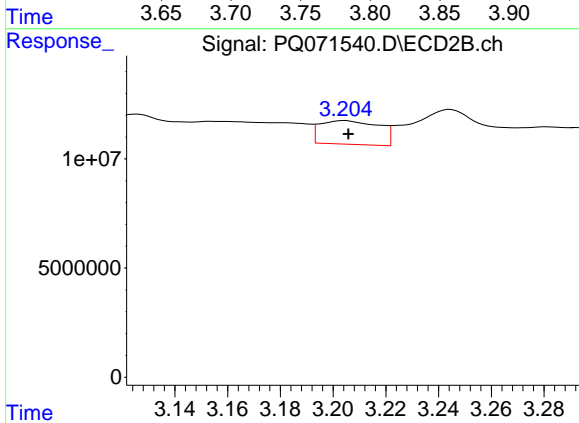
R.T.: 3.204 min
 Delta R.T.: -0.001 min
 Response: 16738264
 Conc: 64.74 ng/ml



#11 AR-1232-1

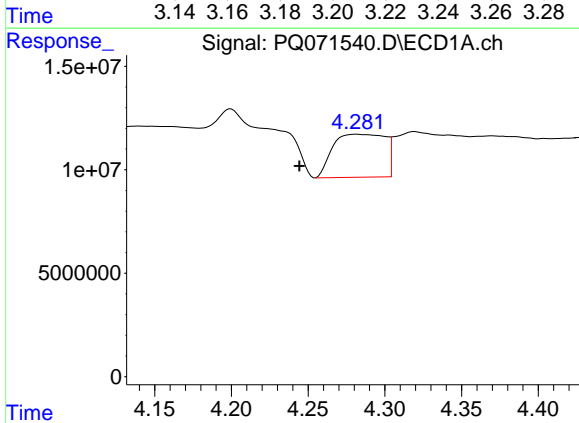
R.T.: 3.771 min
 Delta R.T.: 0.016 min
 Response: 20524673
 Conc: 103.98 ng/ml

Instrument :
 ECD_Q
 ClientSampleId :
 SB-1125-14A



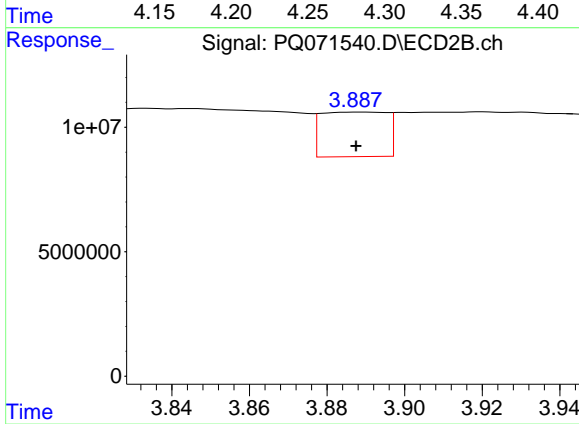
#11 AR-1232-1

R.T.: 3.204 min
 Delta R.T.: -0.001 min
 Response: 16738264
 Conc: 78.94 ng/ml



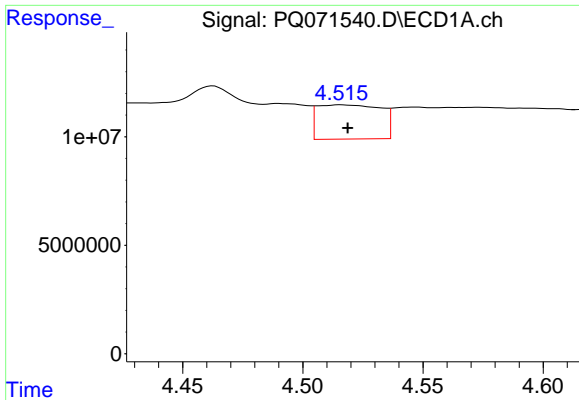
#12 AR-1232-2

R.T.: 4.282 min
 Delta R.T.: 0.037 min
 Response: 49000854
 Conc: 478.22 ng/ml



#12 AR-1232-2

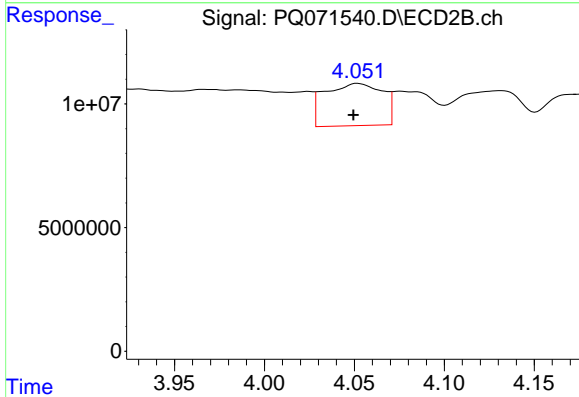
R.T.: 3.888 min
 Delta R.T.: 0.000 min
 Response: 21064037
 Conc: 97.25 ng/ml



#13 AR-1232-3

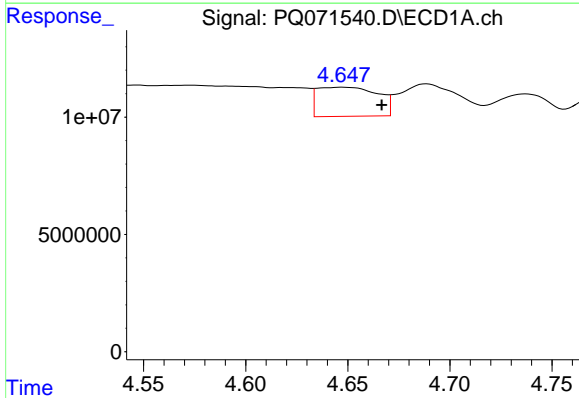
R.T.: 4.516 min
Delta R.T.: -0.003 min
Response: 28986868
Conc: 139.91 ng/ml

Instrument :
ECD_Q
ClientSampleId :
SB-1125-14A



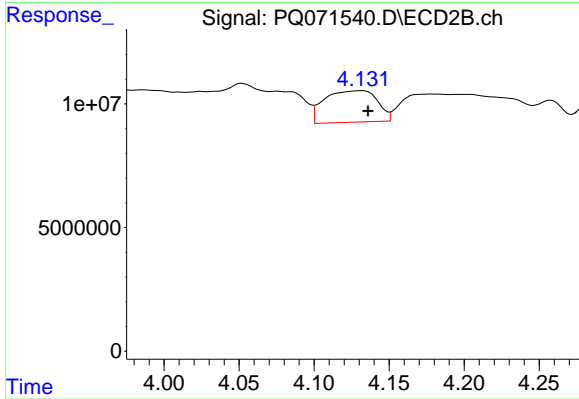
#13 AR-1232-3

R.T.: 4.052 min
Delta R.T.: 0.002 min
Response: 38163170
Conc: 321.01 ng/ml



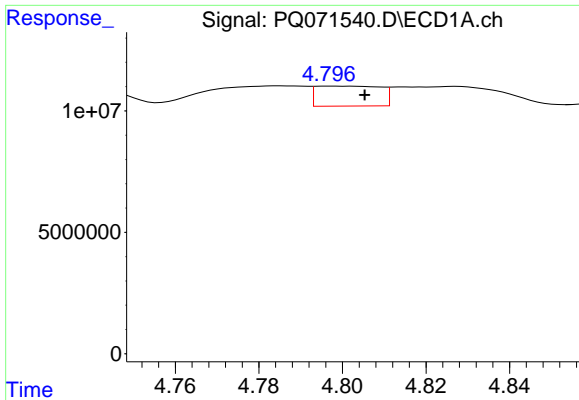
#14 AR-1232-4

R.T.: 4.648 min
Delta R.T.: -0.019 min
Response: 25472819
Conc: 245.33 ng/ml



#14 AR-1232-4

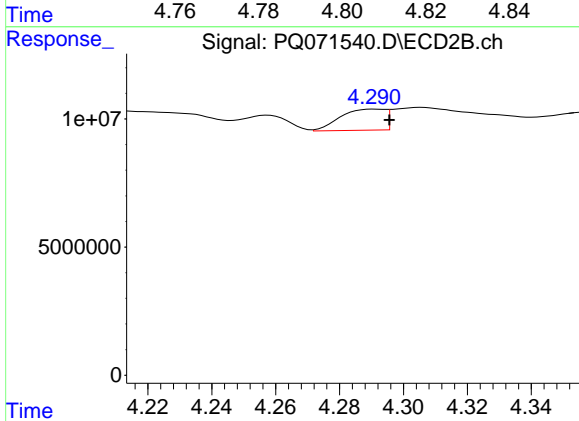
R.T.: 4.132 min
Delta R.T.: -0.004 min
Response: 31054120
Conc: 330.73 ng/ml



#15 AR-1232-5

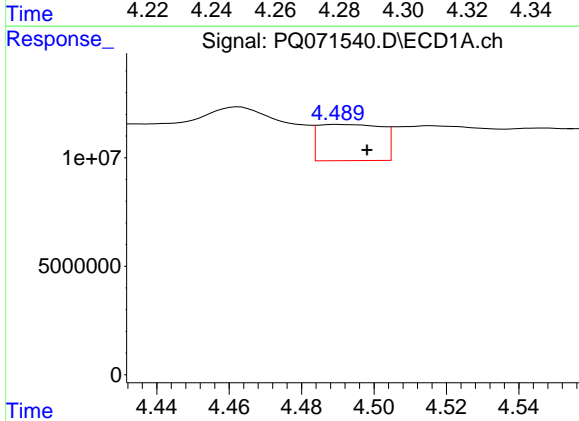
R.T.: 4.797 min
 Delta R.T.: -0.009 min
 Response: 8813253
 Conc: 104.33 ng/ml

Instrument :
 ECD_Q
 ClientSampleId :
 SB-1125-14A



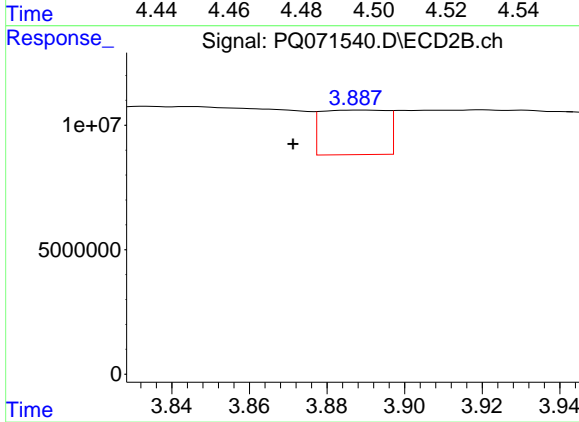
#15 AR-1232-5

R.T.: 4.291 min
 Delta R.T.: -0.005 min
 Response: 7929927
 Conc: 73.38 ng/ml



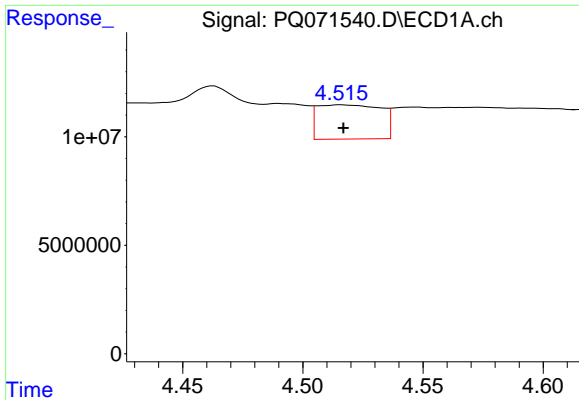
#16 AR-1242-1

R.T.: 4.490 min
 Delta R.T.: -0.008 min
 Response: 20480092
 Conc: 78.55 ng/ml



#16 AR-1242-1

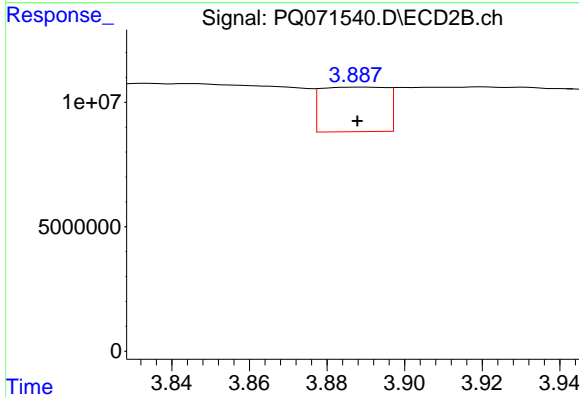
R.T.: 3.888 min
 Delta R.T.: 0.017 min
 Response: 21064037
 Conc: 72.76 ng/ml



#17 AR-1242-2

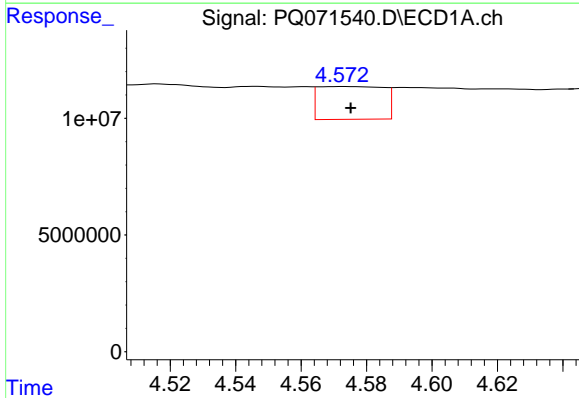
R.T.: 4.516 min
 Delta R.T.: 0.000 min
 Response: 28986868
 Conc: 76.13 ng/ml

Instrument :
 ECD_Q
 ClientSampleId :
 SB-1125-14A



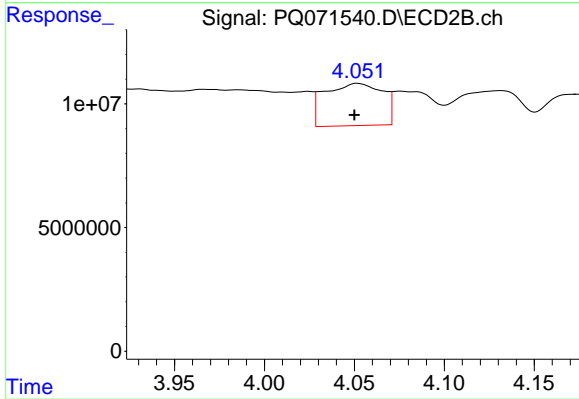
#17 AR-1242-2

R.T.: 3.888 min
 Delta R.T.: 0.000 min
 Response: 21064037
 Conc: 52.29 ng/ml



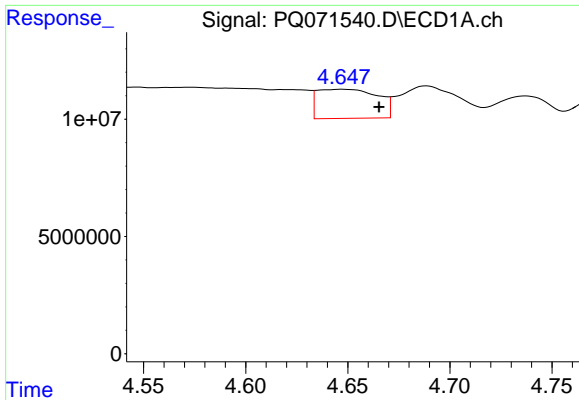
#18 AR-1242-3

R.T.: 4.573 min
 Delta R.T.: -0.002 min
 Response: 19447961
 Conc: 79.95 ng/ml



#18 AR-1242-3

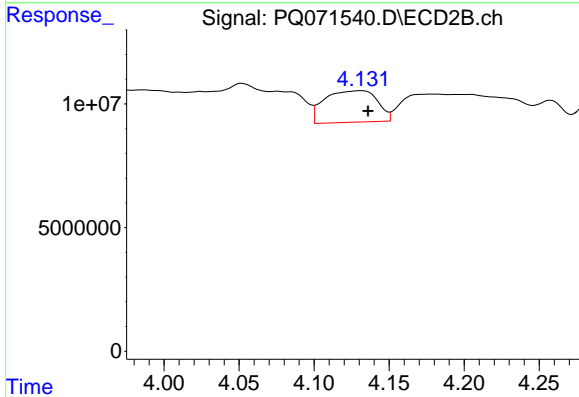
R.T.: 4.052 min
 Delta R.T.: 0.002 min
 Response: 38163170
 Conc: 163.16 ng/ml



#19 AR-1242-4

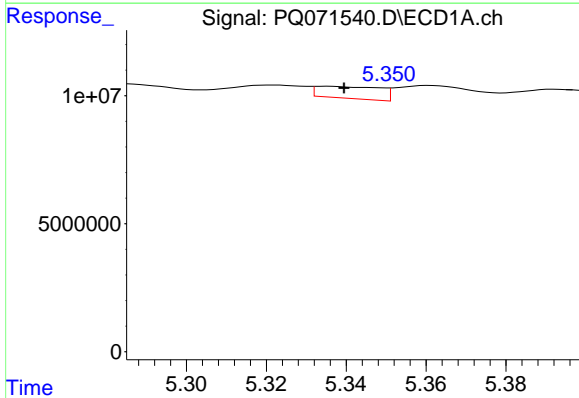
R.T.: 4.648 min
 Delta R.T.: -0.018 min
 Response: 25472819
 Conc: 131.09 ng/ml

Instrument :
 ECD_Q
 ClientSampleId :
 SB-1125-14A



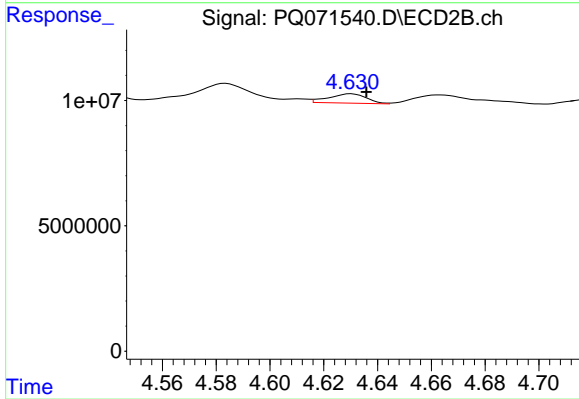
#19 AR-1242-4

R.T.: 4.132 min
 Delta R.T.: -0.004 min
 Response: 31054120
 Conc: 155.40 ng/ml



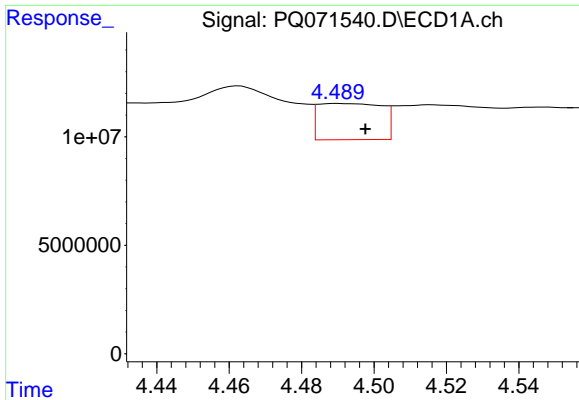
#20 AR-1242-5

R.T.: 5.335 min
 Delta R.T.: -0.004 min
 Response: 5147212
 Conc: 25.76 ng/ml



#20 AR-1242-5

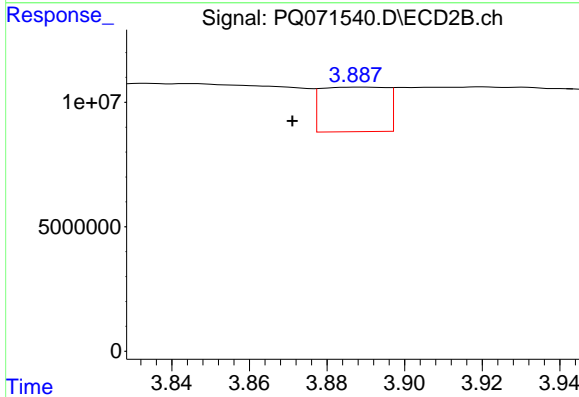
R.T.: 4.630 min
 Delta R.T.: -0.006 min
 Response: 3638079
 Conc: 13.82 ng/ml



#21 AR-1248-1

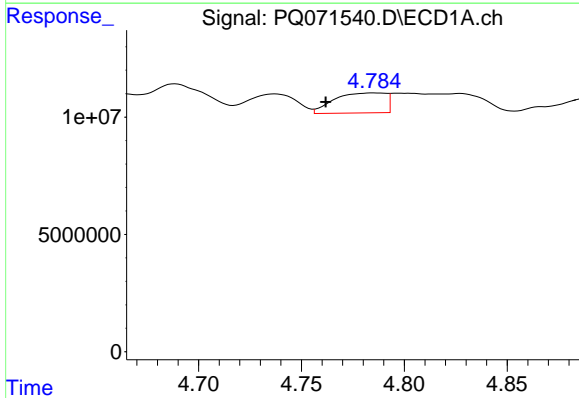
R.T.: 4.490 min
 Delta R.T.: -0.008 min
 Response: 20480092
 Conc: 107.51 ng/ml

Instrument :
 ECD_Q
 ClientSampleId :
 SB-1125-14A



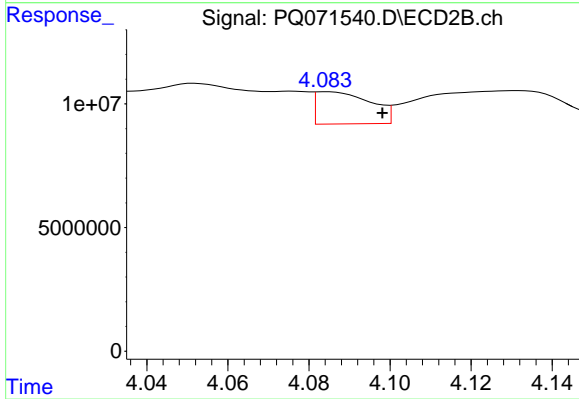
#21 AR-1248-1

R.T.: 3.888 min
 Delta R.T.: 0.017 min
 Response: 21064037
 Conc: 98.95 ng/ml



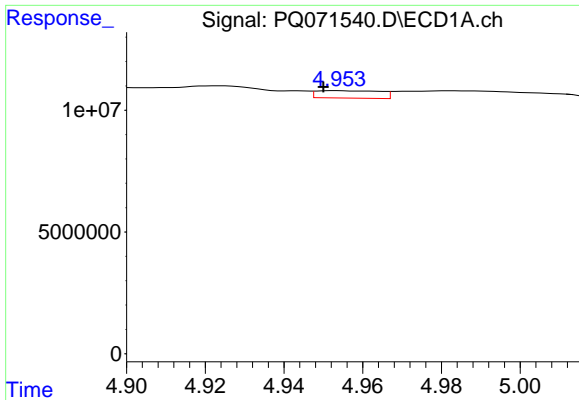
#22 AR-1248-2

R.T.: 4.785 min
 Delta R.T.: 0.023 min
 Response: 14896285
 Conc: 61.23 ng/ml



#22 AR-1248-2

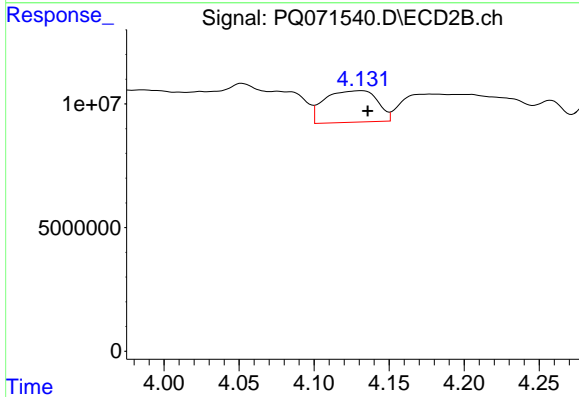
R.T.: 4.084 min
 Delta R.T.: -0.014 min
 Response: 12175863
 Conc: 42.87 ng/ml



#23 AR-1248-3

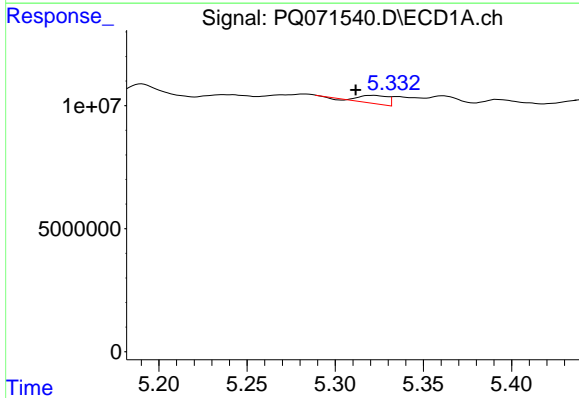
R.T.: 4.953 min
 Delta R.T.: 0.003 min
 Response: 3425899
 Conc: 11.66 ng/ml

Instrument :
 ECD_Q
 ClientSampleId :
 SB-1125-14A



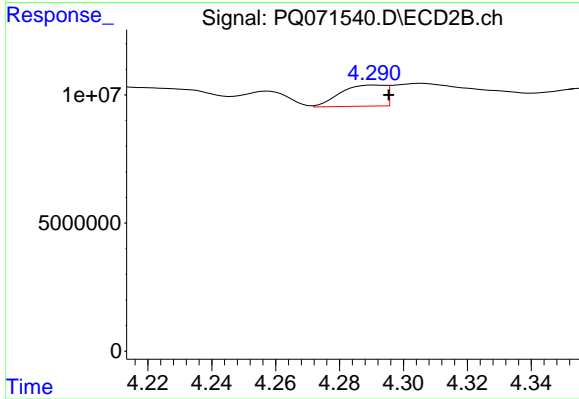
#23 AR-1248-3

R.T.: 4.132 min
 Delta R.T.: -0.004 min
 Response: 31054120
 Conc: 110.86 ng/ml



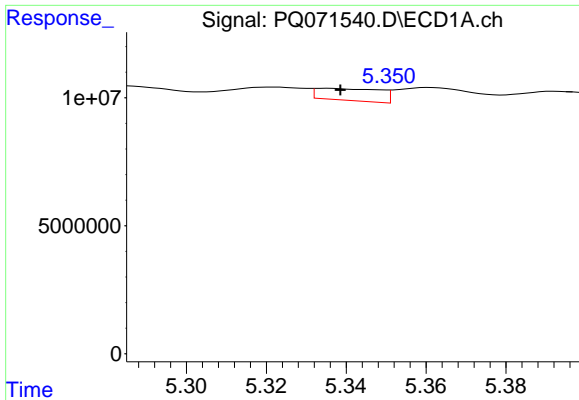
#24 AR-1248-4

R.T.: 5.322 min
 Delta R.T.: 0.010 min
 Response: 3735578
 Conc: 14.21 ng/ml



#24 AR-1248-4

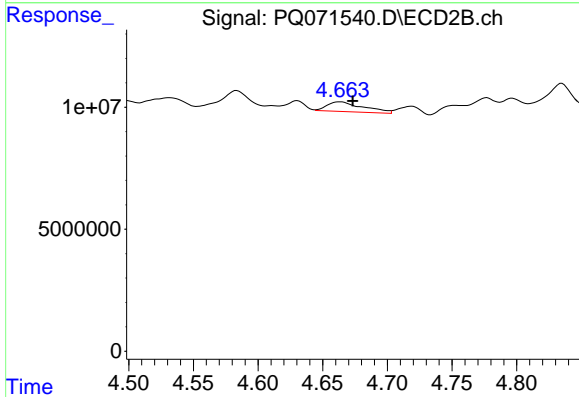
R.T.: 4.291 min
 Delta R.T.: -0.004 min
 Response: 7929927
 Conc: 22.89 ng/ml



#25 AR-1248-5

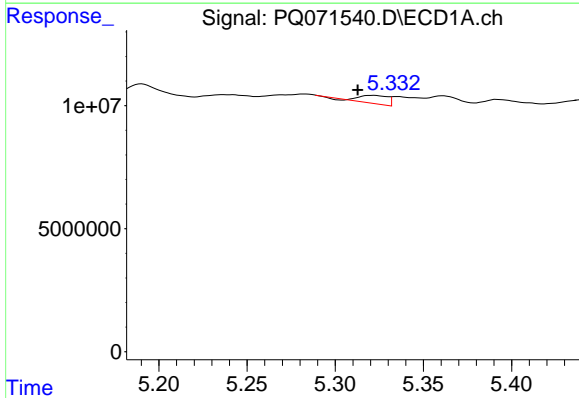
R.T.: 5.335 min
 Delta R.T.: -0.003 min
 Response: 5147212
 Conc: 15.21 ng/ml

Instrument :
 ECD_Q
 ClientSampleId :
 SB-1125-14A



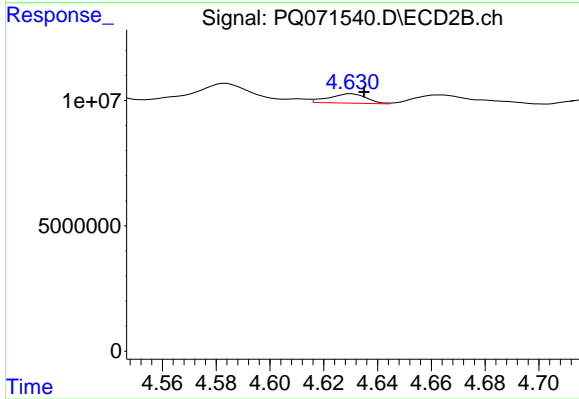
#25 AR-1248-5

R.T.: 4.663 min
 Delta R.T.: -0.010 min
 Response: 7773991
 Conc: 22.30 ng/ml



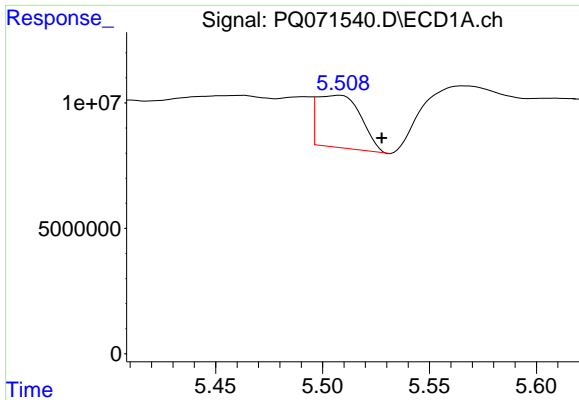
#26 AR-1254-1

R.T.: 5.322 min
 Delta R.T.: 0.009 min
 Response: 3735578
 Conc: 10.75 ng/ml



#26 AR-1254-1

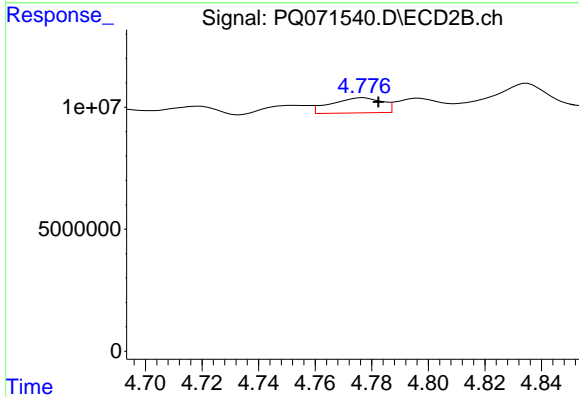
R.T.: 4.630 min
 Delta R.T.: -0.005 min
 Response: 3638079
 Conc: 6.79 ng/ml



#27 AR-1254-2

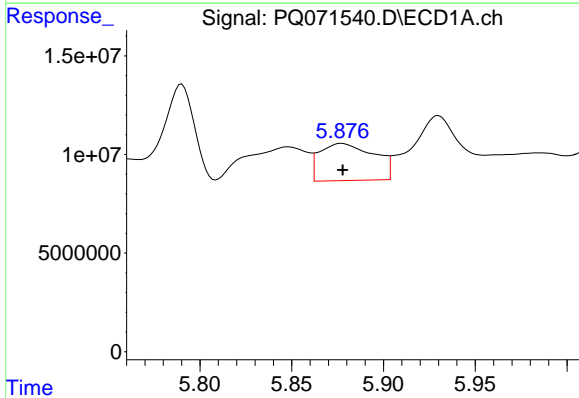
R.T.: 5.508 min
 Delta R.T.: -0.019 min
 Response: 29751195
 Conc: 54.91 ng/ml

Instrument :
 ECD_Q
 ClientSampleId :
 SB-1125-14A



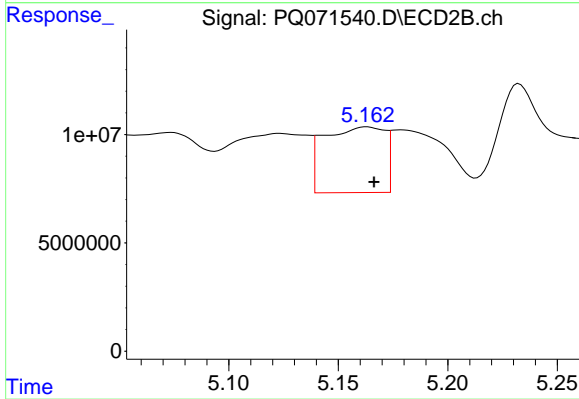
#27 AR-1254-2

R.T.: 4.777 min
 Delta R.T.: -0.005 min
 Response: 7783877
 Conc: 16.97 ng/ml



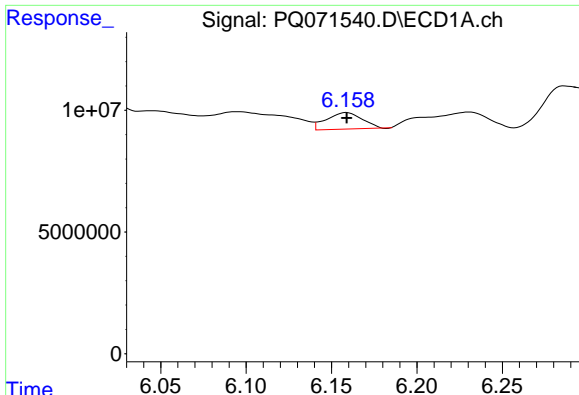
#28 AR-1254-3

R.T.: 5.877 min
 Delta R.T.: 0.000 min
 Response: 38728998
 Conc: 67.26 ng/ml



#28 AR-1254-3

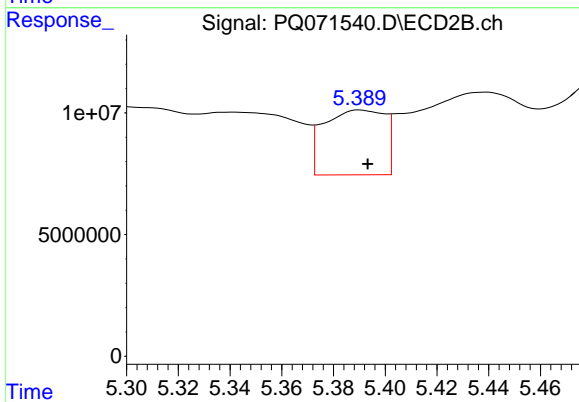
R.T.: 5.163 min
 Delta R.T.: -0.003 min
 Response: 58528486
 Conc: 77.08 ng/ml



#29 AR-1254-4

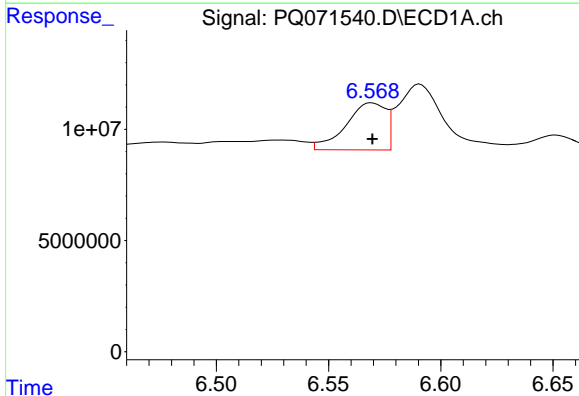
R.T.: 6.159 min
 Delta R.T.: 0.000 min
 Response: 9298646
 Conc: 22.01 ng/ml

Instrument :
 ECD_Q
 ClientSampleId :
 SB-1125-14A



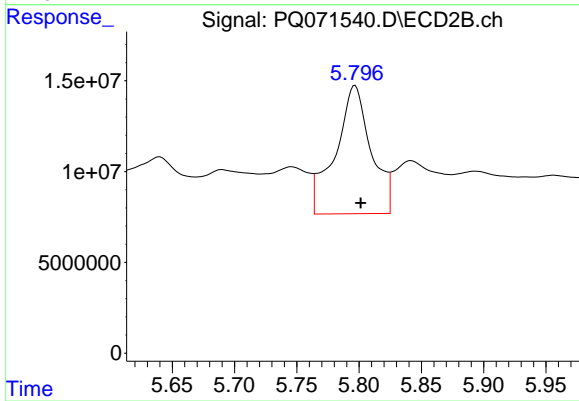
#29 AR-1254-4

R.T.: 5.390 min
 Delta R.T.: -0.003 min
 Response: 43501295
 Conc: 87.03 ng/ml



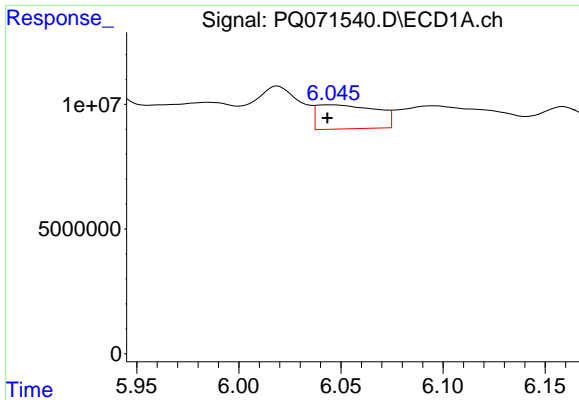
#30 AR-1254-5

R.T.: 6.569 min
 Delta R.T.: 0.000 min
 Response: 26301178
 Conc: 57.22 ng/ml



#30 AR-1254-5

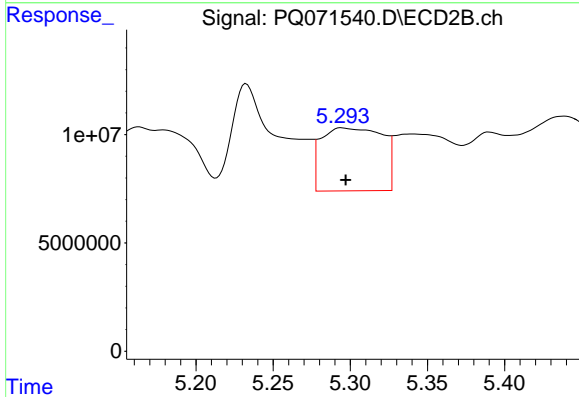
R.T.: 5.797 min
 Delta R.T.: -0.005 min
 Response: 140878406
 Conc: 203.51 ng/ml



#31 AR-1260-1

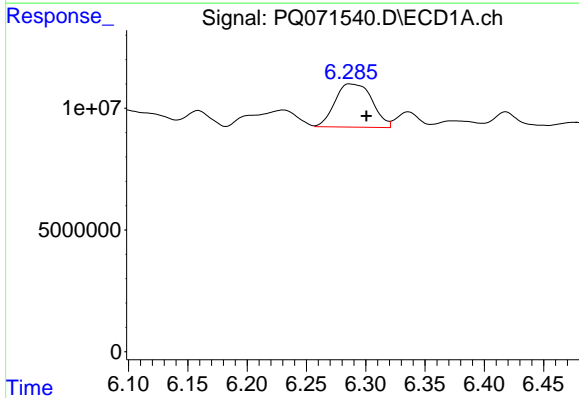
R.T.: 6.045 min
 Delta R.T.: 0.002 min
 Response: 19509929
 Conc: 43.60 ng/ml

Instrument :
 ECD_Q
 ClientSampleId :
 SB-1125-14A



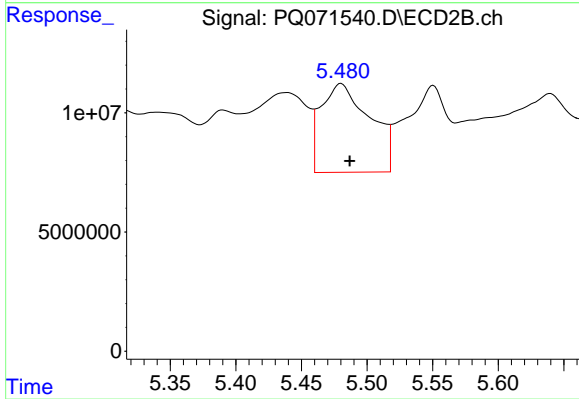
#31 AR-1260-1

R.T.: 5.294 min
 Delta R.T.: -0.003 min
 Response: 80123569
 Conc: 160.59 ng/ml



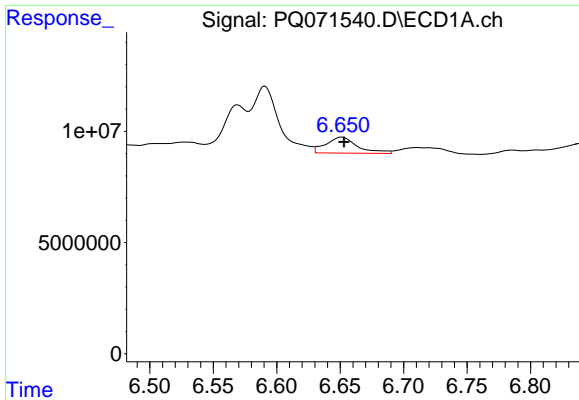
#32 AR-1260-2

R.T.: 6.287 min
 Delta R.T.: -0.014 min
 Response: 38624641
 Conc: 75.60 ng/ml



#32 AR-1260-2

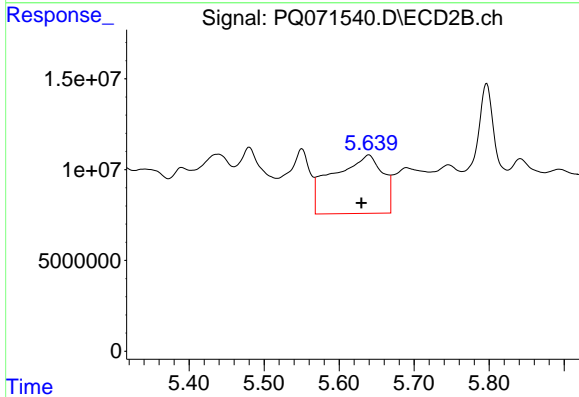
R.T.: 5.480 min
 Delta R.T.: -0.006 min
 Response: 96467659
 Conc: 159.09 ng/ml



#33 AR-1260-3

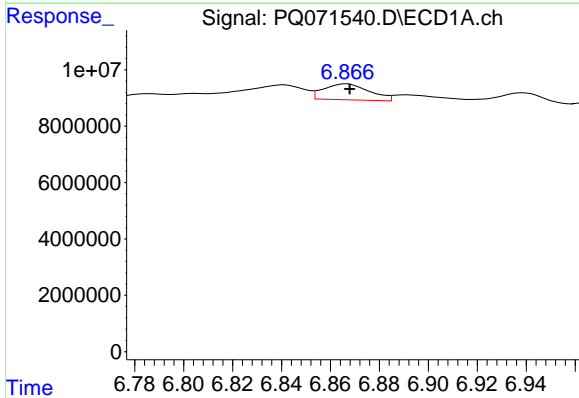
R.T.: 6.651 min
 Delta R.T.: -0.002 min
 Response: 12363510
 Conc: 32.30 ng/ml

Instrument :
 ECD_Q
 ClientSampleId :
 SB-1125-14A



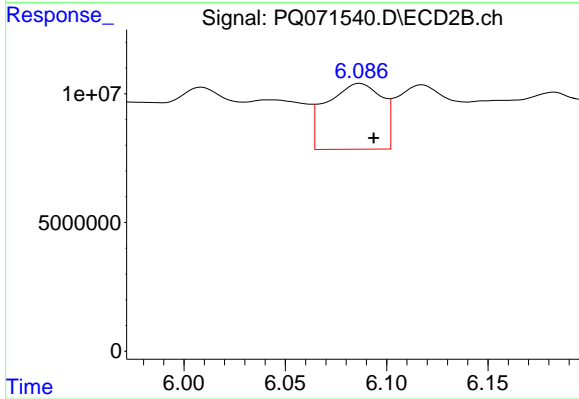
#33 AR-1260-3

R.T.: 5.640 min
 Delta R.T.: 0.010 min
 Response: 149165342
 Conc: 252.32 ng/ml



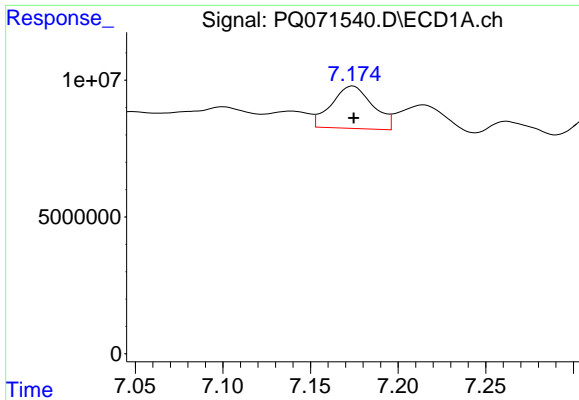
#34 AR-1260-4

R.T.: 6.867 min
 Delta R.T.: -0.001 min
 Response: 7331607
 Conc: 17.53 ng/ml



#34 AR-1260-4

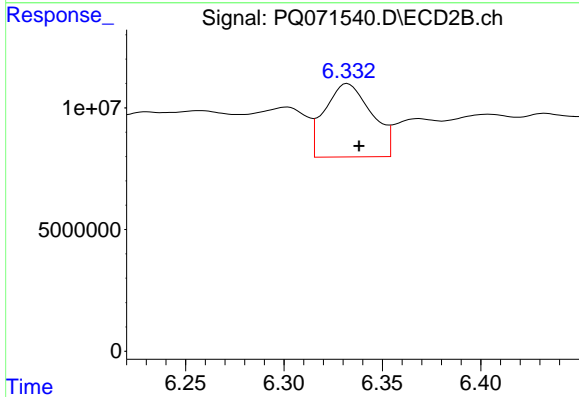
R.T.: 6.087 min
 Delta R.T.: -0.007 min
 Response: 48624251
 Conc: 98.16 ng/ml



#35 AR-1260-5

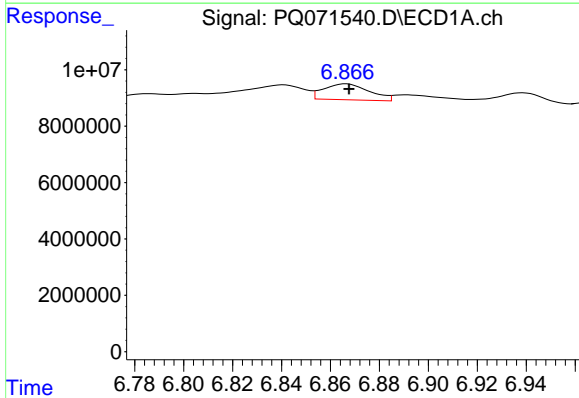
R.T.: 7.174 min
 Delta R.T.: 0.000 min
 Response: 25484784
 Conc: 30.62 ng/ml

Instrument :
 ECD_Q
 ClientSampleId :
 SB-1125-14A



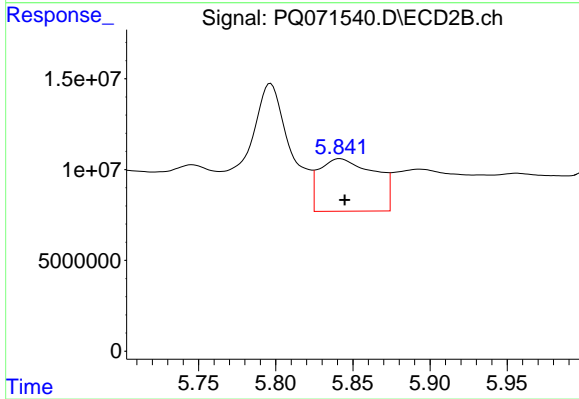
#35 AR-1260-5

R.T.: 6.332 min
 Delta R.T.: -0.006 min
 Response: 50186334
 Conc: 43.71 ng/ml



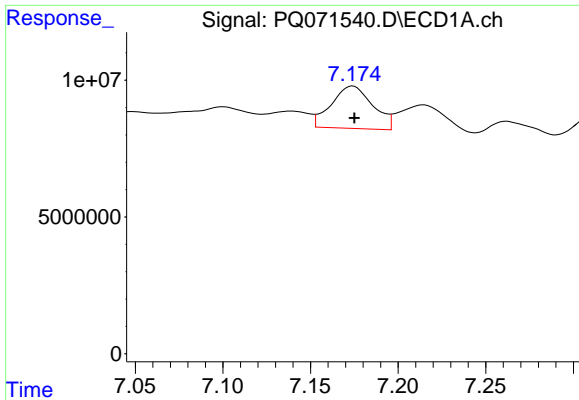
#36 AR-1262-1

R.T.: 6.867 min
 Delta R.T.: -0.001 min
 Response: 7331607
 Conc: 15.71 ng/ml



#36 AR-1262-1

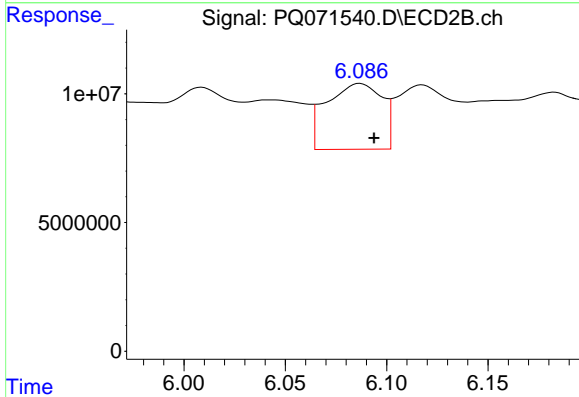
R.T.: 5.842 min
 Delta R.T.: -0.003 min
 Response: 72804475
 Conc: 113.84 ng/ml



#37 AR-1262-2

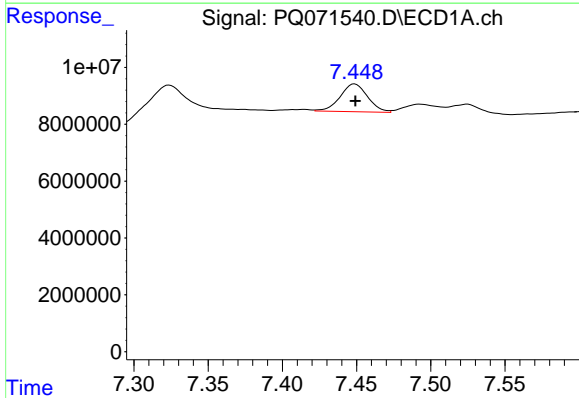
R.T.: 7.174 min
 Delta R.T.: 0.000 min
 Response: 25484784
 Conc: 29.97 ng/ml

Instrument :
 ECD_Q
 ClientSampleId :
 SB-1125-14A



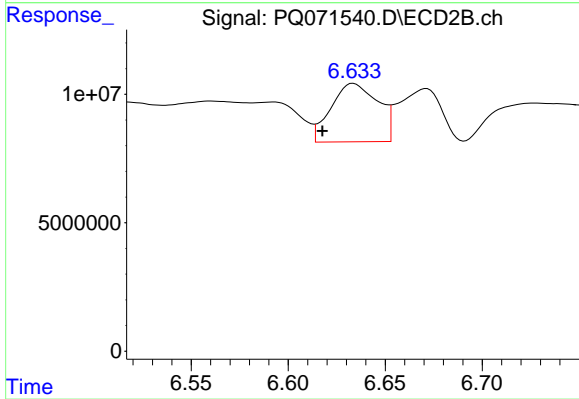
#37 AR-1262-2

R.T.: 6.087 min
 Delta R.T.: -0.007 min
 Response: 48624251
 Conc: 81.81 ng/ml



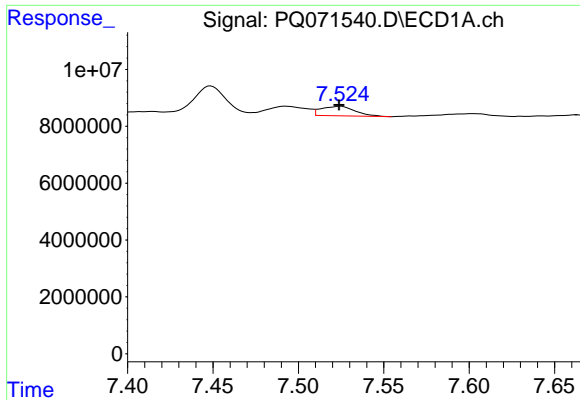
#38 AR-1262-3

R.T.: 7.449 min
 Delta R.T.: 0.000 min
 Response: 12664349
 Conc: 22.58 ng/ml



#38 AR-1262-3

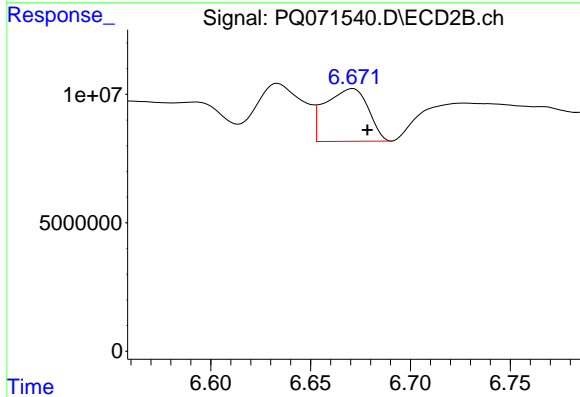
R.T.: 6.634 min
 Delta R.T.: 0.016 min
 Response: 38260205
 Conc: 80.10 ng/ml



#39 AR-1262-4

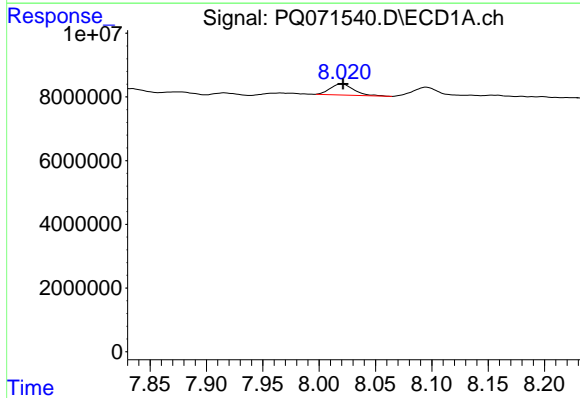
R.T.: 7.525 min
 Delta R.T.: 0.001 min
 Response: 4632880
 Conc: 10.57 ng/ml

Instrument :
 ECD_Q
 ClientSampleId :
 SB-1125-14A



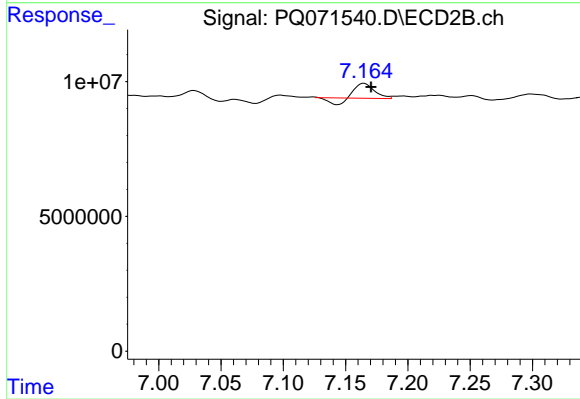
#39 AR-1262-4

R.T.: 6.671 min
 Delta R.T.: -0.007 min
 Response: 30751967
 Conc: 34.38 ng/ml



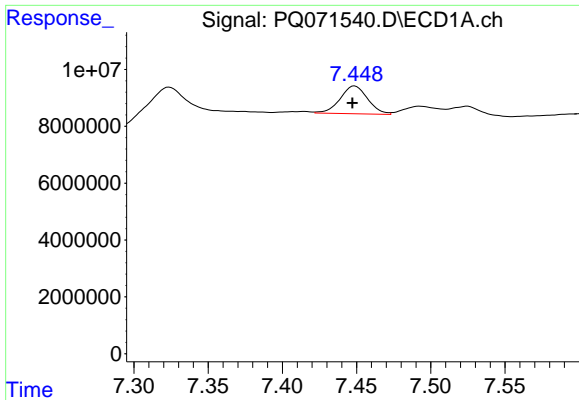
#40 AR-1262-5

R.T.: 8.020 min
 Delta R.T.: -0.001 min
 Response: 5069164
 Conc: 17.85 ng/ml



#40 AR-1262-5

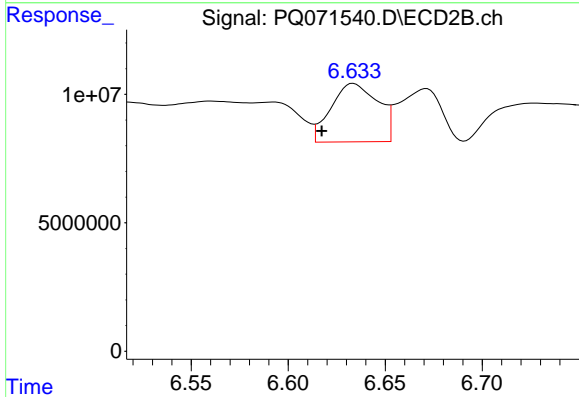
R.T.: 7.165 min
 Delta R.T.: -0.006 min
 Response: 4302745
 Conc: 10.05 ng/ml



#41 AR-1268-1

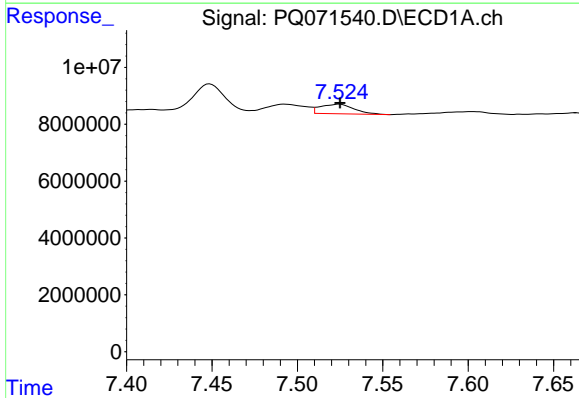
R.T.: 7.449 min
 Delta R.T.: 0.002 min
 Response: 12664349
 Conc: 12.41 ng/ml

Instrument :
 ECD_Q
 ClientSampleId :
 SB-1125-14A



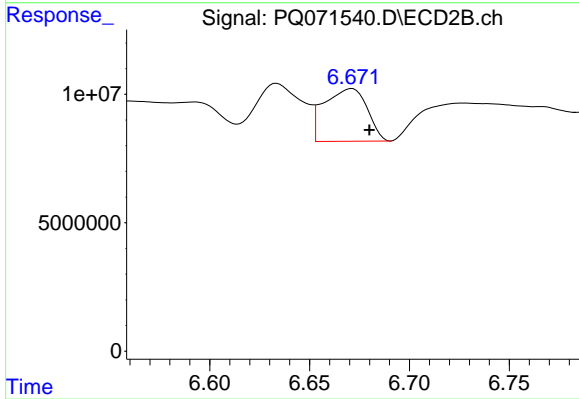
#41 AR-1268-1

R.T.: 6.634 min
 Delta R.T.: 0.016 min
 Response: 38260205
 Conc: 26.57 ng/ml



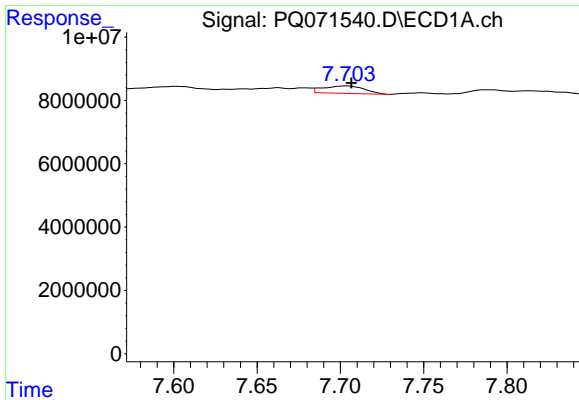
#42 AR-1268-2

R.T.: 7.525 min
 Delta R.T.: 0.000 min
 Response: 4632880
 Conc: 4.89 ng/ml



#42 AR-1268-2

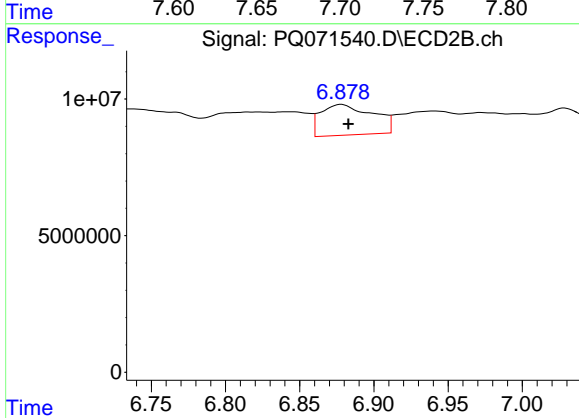
R.T.: 6.671 min
 Delta R.T.: -0.009 min
 Response: 30751967
 Conc: 22.82 ng/ml



#43 AR-1268-3

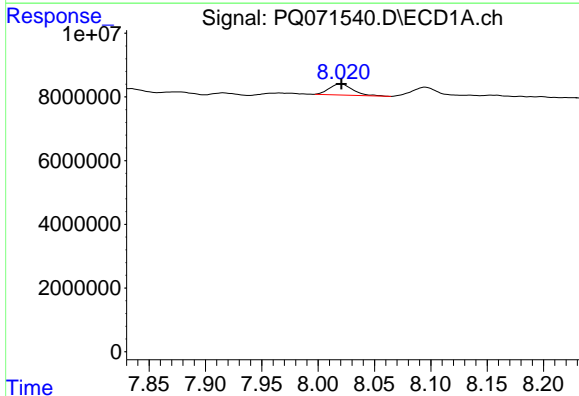
R.T.: 7.704 min
 Delta R.T.: -0.003 min
 Response: 4024569
 Conc: 5.17 ng/ml

Instrument :
 ECD_Q
 ClientSampleId :
 SB-1125-14A



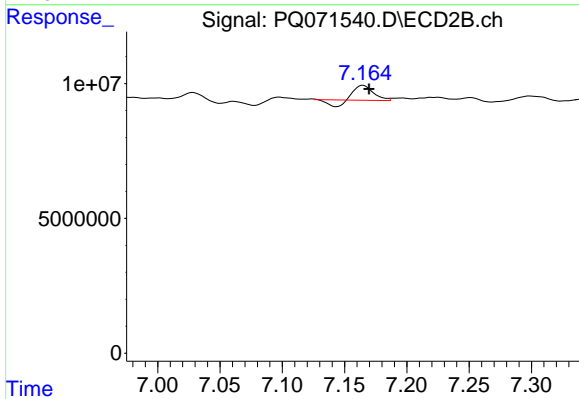
#43 AR-1268-3

R.T.: 6.878 min
 Delta R.T.: -0.005 min
 Response: 27362382
 Conc: 24.09 ng/ml



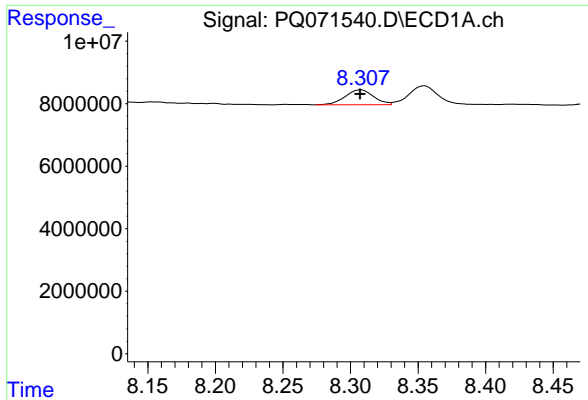
#44 AR-1268-4

R.T.: 8.020 min
 Delta R.T.: 0.000 min
 Response: 5069164
 Conc: 14.98 ng/ml



#44 AR-1268-4

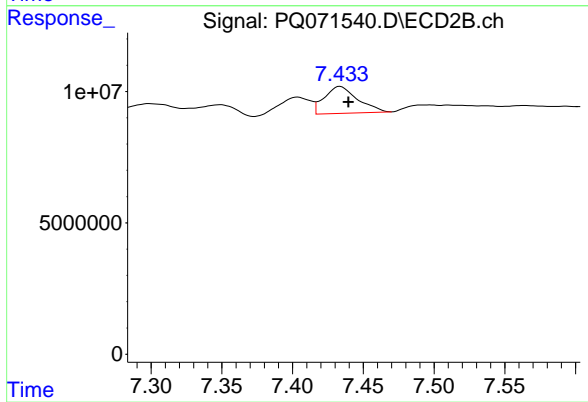
R.T.: 7.165 min
 Delta R.T.: -0.005 min
 Response: 4302745
 Conc: 8.48 ng/ml



#45 AR-1268-5

R.T.: 8.308 min
 Delta R.T.: 0.000 min
 Response: 7003113
 Conc: 3.05 ng/ml

Instrument :
 ECD_Q
 ClientSampleId :
 SB-1125-14A



#45 AR-1268-5

R.T.: 7.434 min
 Delta R.T.: -0.006 min
 Response: 16720064
 Conc: 4.72 ng/ml