

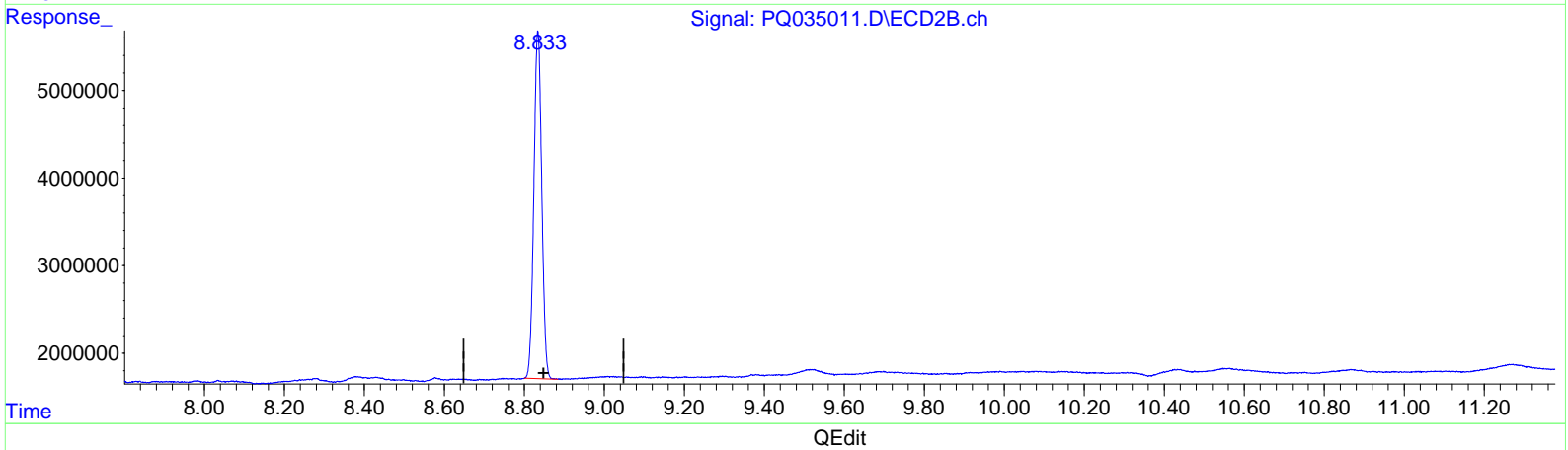
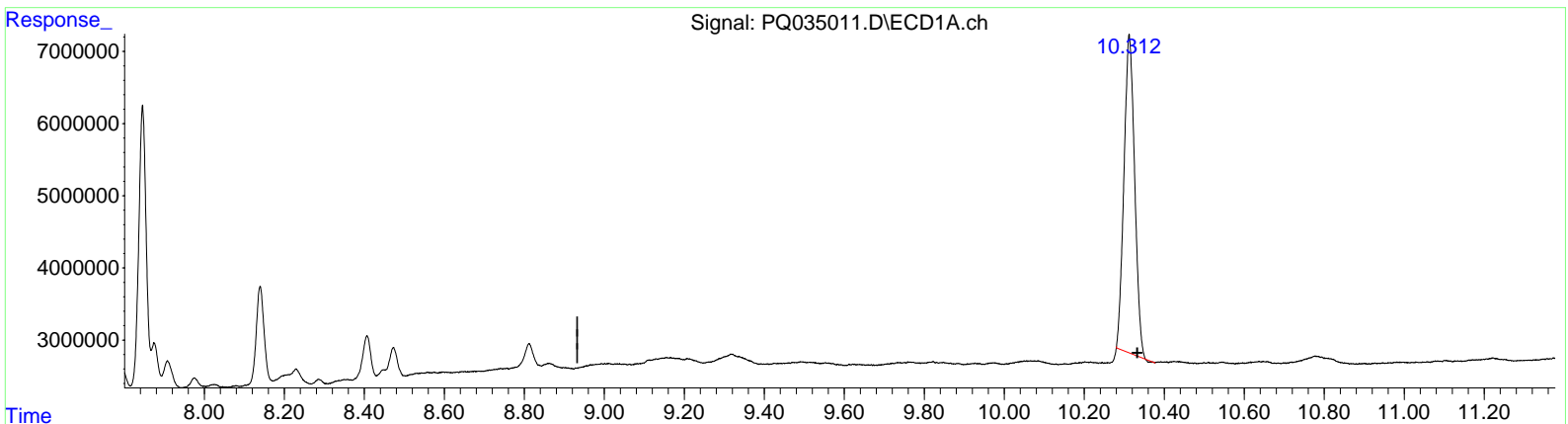
Data Path : Z:\pestpcbsrv\HPCHEM1\ECD_Q\Data\pq112718\
 Data File : PQ035011.D
 Signal(s) : Signal #1: ECD1A.ch Signal #2: ECD2B.ch
 Acq On : 27 Nov 2018 09:37
 Operator : SM\SJ
 Sample : AR1254CCC400
 Misc :
 ALS Vial : 4 Sample Multiplier: 1

Instrument :
 ECD_Q
LabSampleID :
 AR1254316

Manual Integrations
APPROVED
 mohammad
 11/28/2018 12:14:29 PM

Integration File signal 1: autoint1.e
 Integration File signal 2: autoint2.e
 Quant Time: Nov 28 00:39:52 2018
 Quant Method : Z:\pestpcbsrv\HPCHEM1\ECD_Q\Method\PQ111718CLP.M
 Quant Title : GC EXTRACTABLES
 QLast Update : Fri Nov 16 03:52:57 2018
 Response via : Initial Calibration
 Integrator: ChemStation

Volume Inj. : 1 µl
 Signal #1 Phase : ZB MR1 Signal #2 Phase: ZB MR2
 Signal #1 Info : 30Mx0.32mmx 0.5µm Signal #2 Info : 30M x 0.32mm x 0.25µm



(2) Decachlorobiphenyl (SA)
 10.312min 29.565 ng/ml
 response 81452567

(2) Decachlorobiphenyl #2 (SA)
 8.834min 27.802 ng/ml
 response 54188440

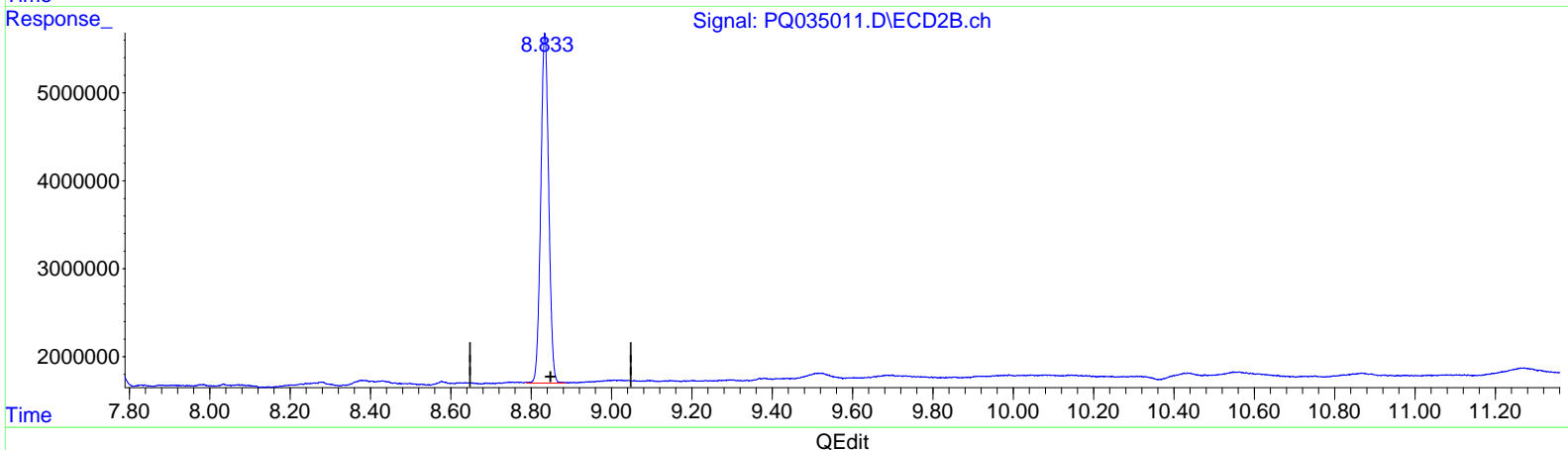
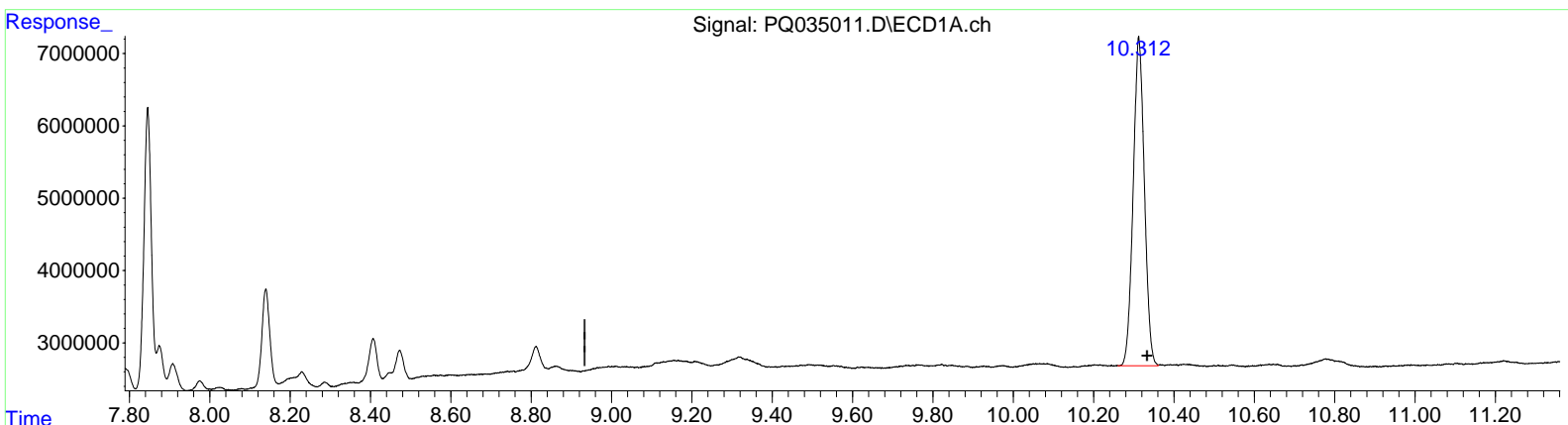
Data Path : Z:\pestpcbsrv\HPCHEM1\ECD_Q\Data\pq112718\
 Data File : PQ035011.D
 Signal(s) : Signal #1: ECD1A.ch Signal #2: ECD2B.ch
 Acq On : 27 Nov 2018 09:37
 Operator : SM\SJ
 Sample : AR1254CCC400
 Misc :
 ALS Vial : 4 Sample Multiplier: 1

Instrument :
 ECD_Q
LabSampleID :
 AR1254316

Manual Integrations
APPROVED
 mohammad
 11/28/2018 12:14:29 PM

Integration File signal 1: autoint1.e
 Integration File signal 2: autoint2.e
 Quant Time: Nov 28 00:39:52 2018
 Quant Method : Z:\pestpcbsrv\HPCHEM1\ECD_Q\Method\PQ111718CLP.M
 Quant Title : GC EXTRACTABLES
 QLast Update : Fri Nov 16 03:52:57 2018
 Response via : Initial Calibration
 Integrator: ChemStation

Volume Inj. : 1 µl
 Signal #1 Phase : ZB MR1 Signal #2 Phase: ZB MR2
 Signal #1 Info : 30Mx0.32mmx 0.5µm Signal #2 Info : 30M x 0.32mm x 0.25µm



(2) Decachlorobiphenyl (SA)
 10.312min 31.894 ng/ml m
 response 87867987

(2) Decachlorobiphenyl #2 (SA)
 8.833min 28.036 ng/ml m
 response 54643049

Data Path : Z:\pestpcbsrv\HPCHEM1\ECD_Q\Data\PQ112718\
 Data File : PQ035011.D
 Signal(s) : Signal #1: ECD1A.ch Signal #2: ECD2B.ch
 Acq On : 27 Nov 2018 09:37
 Operator : SM\SJ
 Sample : AR1254CCC400
 Misc :
 ALS Vial : 4 Sample Multiplier: 1

Instrument :
 ECD_Q
LabSampleId :
 AR1254316

Integration File signal 1: autoint1.e
 Integration File signal 2: autoint2.e
 Quant Time: Nov 28 00:39:52 2018
 Quant Method : Z:\pestpcbsrv\HPCHEM1\ECD_Q\Method\PQ111718CLP.M
 Quant Title : GC EXTRACTABLES
 QLast Update : Fri Nov 16 03:52:57 2018
 Response via : Initial Calibration
 Integrator: ChemStation

Manual Integrations
APPROVED

mohammad
 11/28/2018 12:14:29 PM

Volume Inj. : 1 µl
 Signal #1 Phase : ZB MR1 Signal #2 Phase: ZB MR2
 Signal #1 Info : 30Mx0.32mmx 0.5µm Signal #2 Info : 30M x 0.32mm x 0.25µm

Compound	RT#1	RT#2	Resp#1	Resp#2	ng/ml	ng/ml
System Monitoring Compounds						
1) SA Tetrachlo...	4.527	3.815	60507757	41360810	21.967	24.402
2) SA Decachlor...	10.312	8.833	87867987	54643049	31.894m	28.036m
Target Compounds						
26) L6 AR-1254-1	6.554	5.700	41884012	37935219	374.383	347.061
27) L6 AR-1254-2	6.771	5.847	64303671	32798601	363.458	343.133
28) L6 AR-1254-3	7.141	6.251	67924775	51684670	350.485	319.651
29) L6 AR-1254-4	7.426	6.479	47604824	31849389	335.387	307.723
30) L6 AR-1254-5	7.846	6.895	49888533	43992216	331.438	310.060

) SJ11/28/18

(f)=RT Delta > 1/2 Window (#)=Amounts differ by > 25% (m)=manual int.