

Data Path : Z:\pestpcbsrv\HPCHEM1\ECD_Q\Data\PQ112718\
 Data File : PQ035018.D
 Signal(s) : Signal #1: ECD1A.ch Signal #2: ECD2B.ch
 Acq On : 27 Nov 2018 11:56
 Operator : SM\SJ
 Sample : J6027-07DL 2X
 Misc :
 ALS Vial : 58 Sample Multiplier: 1

Instrument :
 ECD_Q
ClientSampleId :
 CB4Q6DL

Manual Integrations
APPROVED
 mohammad
 11/28/2018 12:14:44 PM

Integration File signal 1: autoint1.e
 Integration File signal 2: autoint2.e
 Quant Time: Nov 28 00:41:35 2018
 Quant Method : Z:\pestpcbsrv\HPCHEM1\ECD_Q\Method\PQ111718CLP.M
 Quant Title : GC EXTRACTABLES
 QLast Update : Fri Nov 16 03:52:57 2018
 Response via : Initial Calibration
 Integrator: ChemStation

Volume Inj. : 1 µl
 Signal #1 Phase : ZB MR1 Signal #2 Phase: ZB MR2
 Signal #1 Info : 30Mx0.32mmx 0.5µm Signal #2 Info : 30M x 0.32mm x 0.25µm

Compound	RT#1	RT#2	Resp#1	Resp#2	ng/ml	ng/ml

System Monitoring Compounds						
1) SA Tetrachlo...	4.532	3.814	36422631	22402216	13.223	13.217
2) SA Decachlor...	10.316	8.836	41803669	27862248	15.174m	14.295
Target Compounds						
31) L7 AR-1260-1	7.308	6.378	121.2E6	76932705	873.016	717.535
32) L7 AR-1260-2	7.563	6.570	550.9E6	185.3E6	3222.344	1379.626m#
33) L7 AR-1260-3	7.921	6.721	75968347	73897829	712.823	601.947
34) L7 AR-1260-4	8.151	7.189	111.0E6	100.0E6	838.334m	1159.525 #
35) L7 AR-1260-5	8.478	7.432	174.9E6	122.1E6	644.533	555.662

(f)=RT Delta > 1/2 Window (#)=Amounts differ by > 25% (m)=manual int.

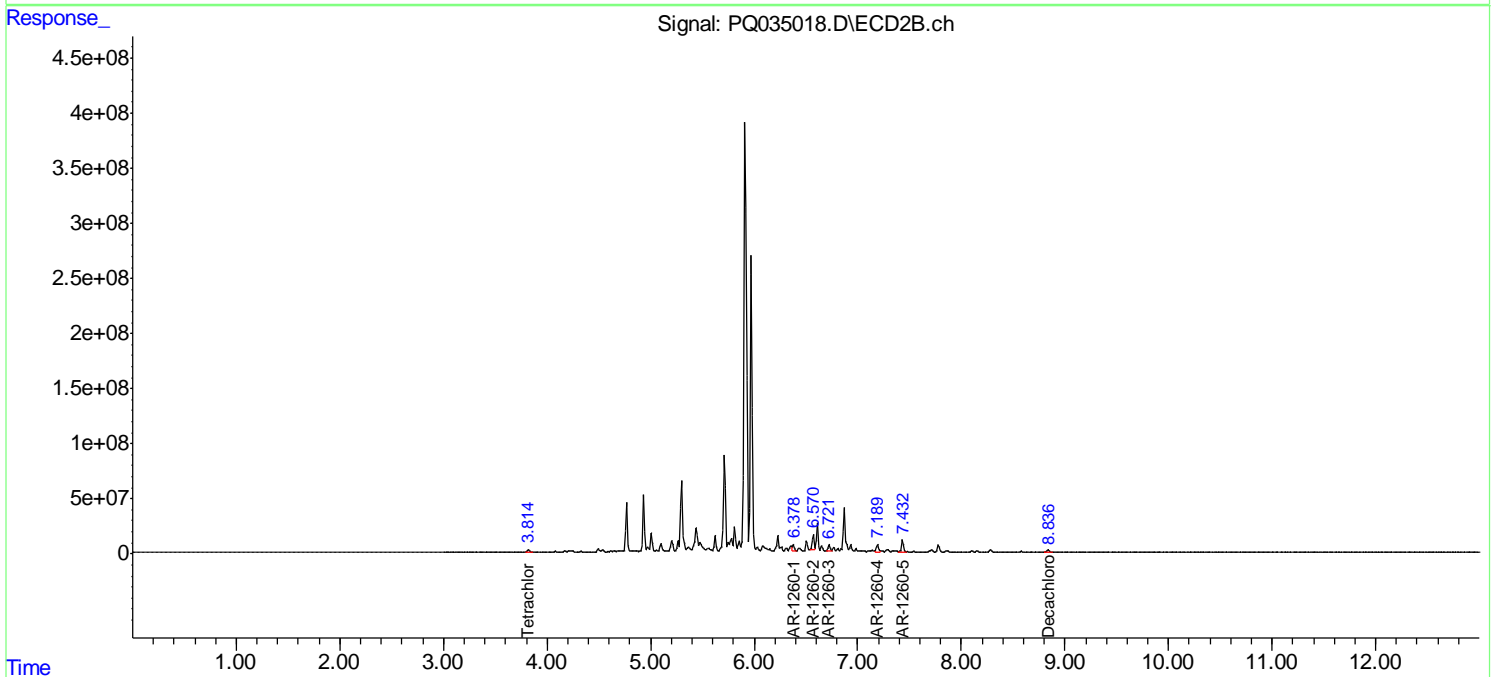
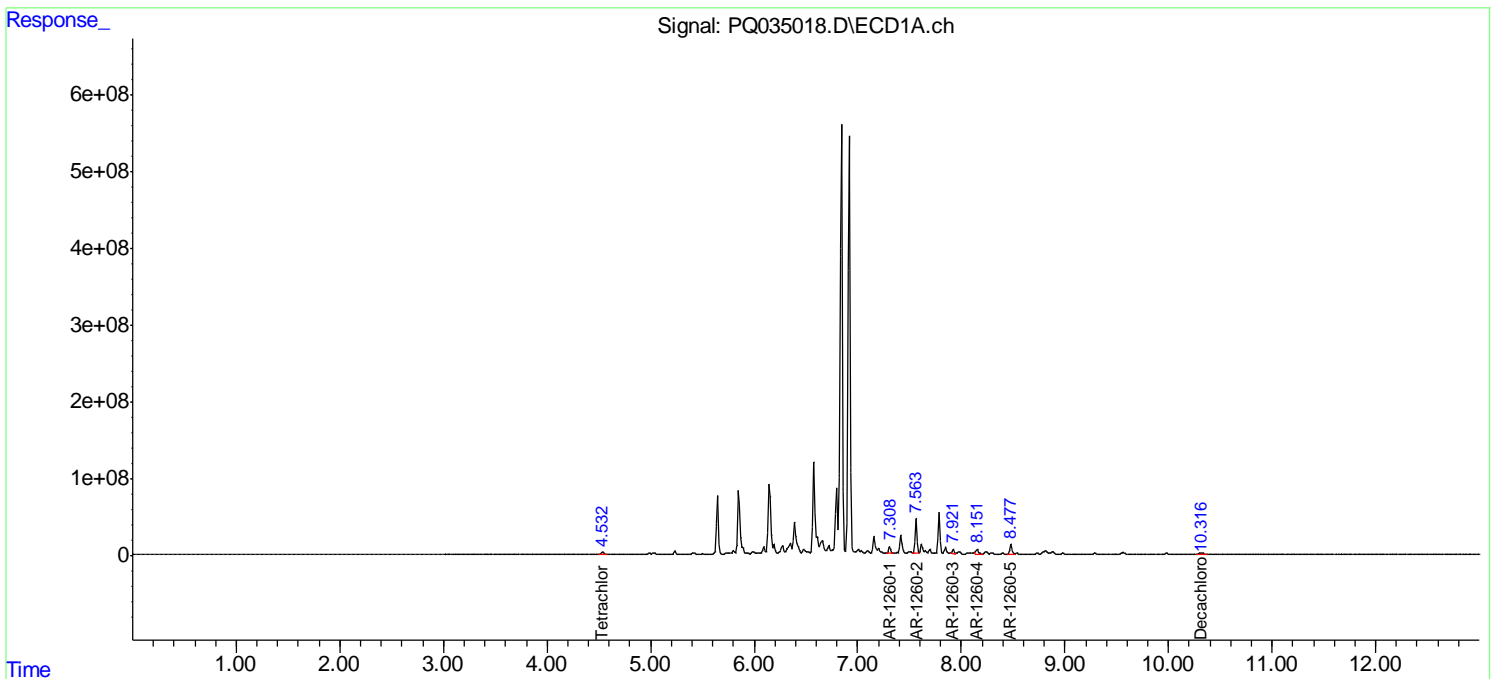
Data Path : Z:\pestpcbsrv\HPCHEM1\ECD_Q\Data\PQ112718\
 Data File : PQ035018.D
 Signal(s) : Signal #1: ECD1A.ch Signal #2: ECD2B.ch
 Acq On : 27 Nov 2018 11:56
 Operator : SM\SJ
 Sample : J6027-07DL 2X
 Misc :
 ALS Vial : 58 Sample Multiplier: 1

Instrument :
 ECD_Q
Client Sampled :
 CB4Q6DL

Manual Integrations
APPROVED
 mohammad
 11/28/2018 12:14:44 PM

Integration File signal 1: autoint1.e
 Integration File signal 2: autoint2.e
 Quant Time: Nov 28 00:41:35 2018
 Quant Method : Z:\pestpcbsrv\HPCHEM1\ECD_Q\Method\PQ111718CLP.M
 Quant Title : GC EXTRACTABLES
 QLast Update : Fri Nov 16 03:52:57 2018
 Response via : Initial Calibration
 Integrator: ChemStation

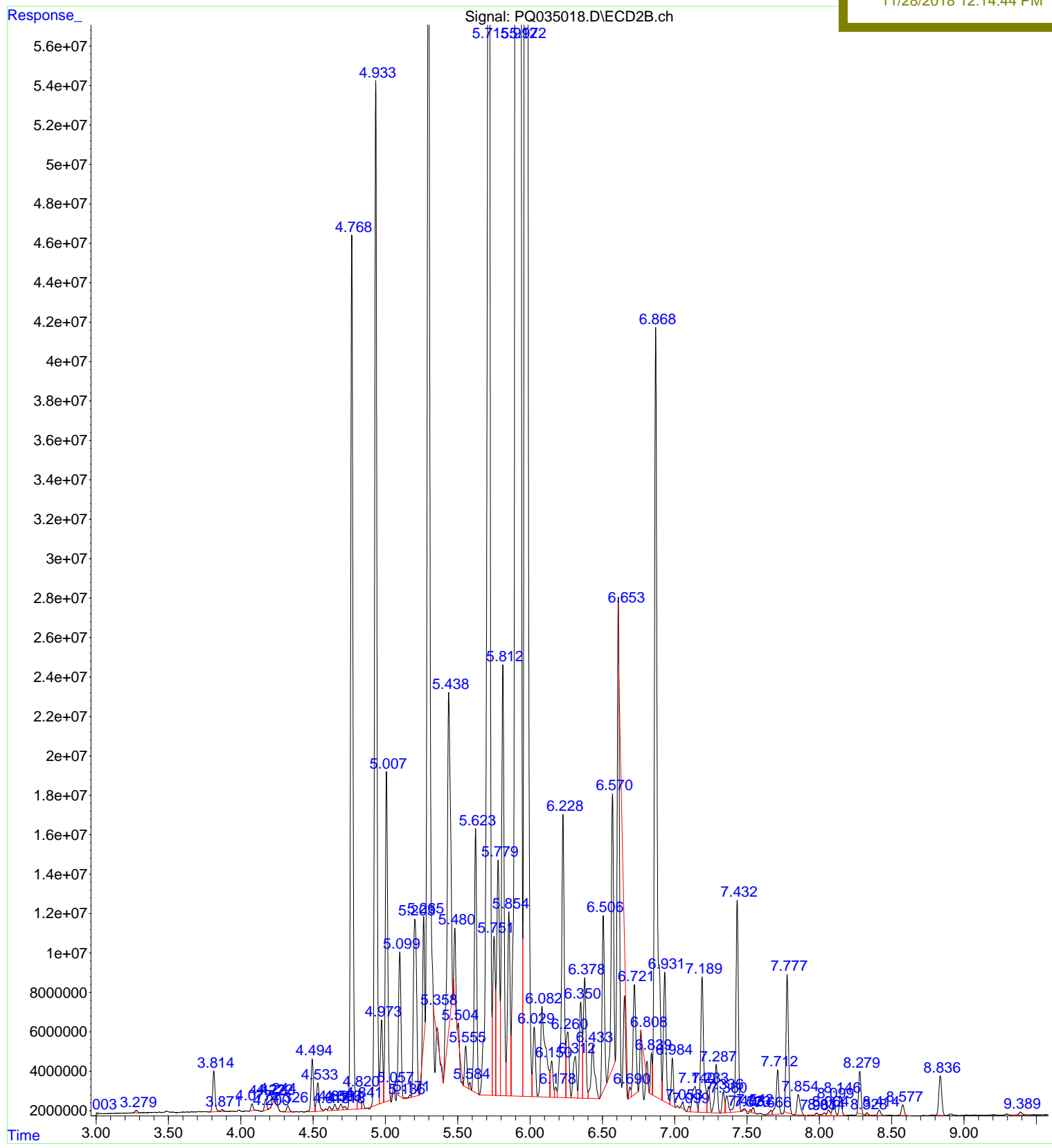
Volume Inj. : 1 µl
 Signal #1 Phase : ZB MR1 Signal #2 Phase: ZB MR2
 Signal #1 Info : 30Mx0.32mmx 0.5µm Signal #2 Info : 30M x 0.32mm x 0.25µm



File : Z:\pestpcbsrv\HPCHEM1\ECD_Q\Data\PQ112718\PQ035018.D
Operator : SM\SJ
Acquired : 27 Nov 2018 11:56 using AcqMethod PCB.M
Instrument : ECD_Q
Sample Name: J6027-07DL 2X
Misc Info :
Vial Number: 58

Instrument :
ECD_Q
Client Sampled :
CB4Q6DL

Manual Integrations
APPROVED
mohammad
11/28/2018 12:14:44 PM



File : Z:\pestpcbsrv\HPCHEM1\ECD_Q\Data\PQ112718\PQ035018.D
Operator : SM\SJ
Acquired : 27 Nov 2018 11:56 using AcqMethod PCB.M
Instrument : ECD_Q
Sample Name: J6027-07DL 2X
Misc Info :
Vial Number: 58

Instrument :
ECD_Q
ClientSampled :
CB4Q6DL

Manual Integrations
APPROVED
mohammad
11/28/2018 12:14:44 PM

