

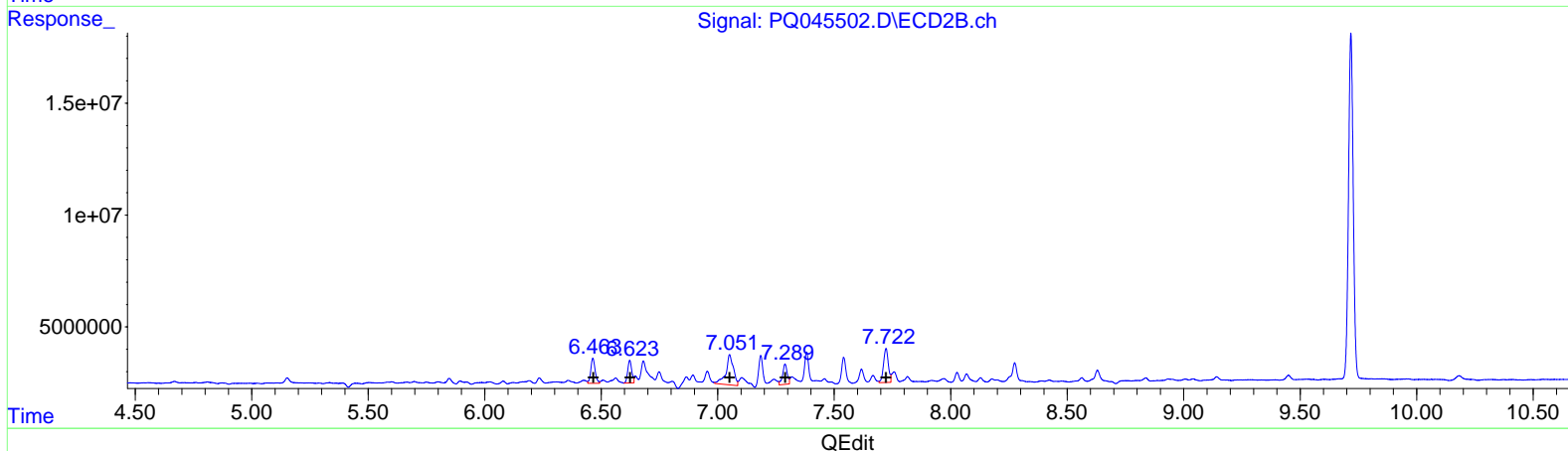
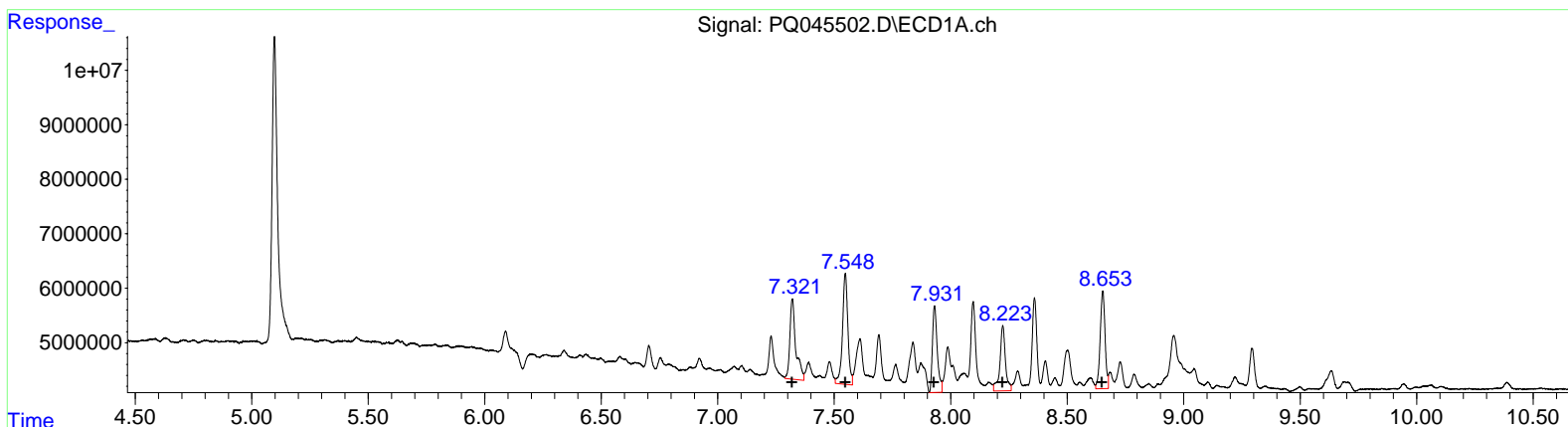
Data Path : Z:\pestpcbsrv\HPCHEM1\ECD_Q\Data\PQ112719\
 Data File : PQ045502.D
 Signal(s) : Signal #1: ECD1A.ch Signal #2: ECD2B.ch
 Acq On : 27 Nov 2019 14:27
 Operator : SM\AJ
 Sample : K6007-04
 Misc :
 ALS Vial : 10 Sample Multiplier: 1

Instrument :
 ECD_Q
Client Sampled :
 C0BL2

Manual Integrations
APPROVED
 mohammad
 11/29/2019 10:39:08 AM

Integration File signal 1: autoint1.e
 Integration File signal 2: autoint2.e
 Quant Time: Nov 29 00:25:27 2019
 Quant Method : Z:\pestpcbsrv\HPCHEM1\ECD_Q\Method\PQ112519CLP.M
 Quant Title : GC EXTRACTABLES
 QLast Update : Tue Nov 26 06:05:49 2019
 Response via : Initial Calibration
 Integrator: ChemStation

Volume Inj. : 1 µl
 Signal #1 Phase : ZB MR1 Signal #2 Phase: ZB MR2
 Signal #1 Info : 30Mx0.32mmx 0.5µm Signal #2 Info : 30M x 0.32mm x 0.25µm



(26) AR-1254-1 (L6)

| R.T. | Response | Conc |
|------|----------|--------|
| 7.32 | 26069520 | 158.46 |
| 7.55 | 32775587 | 125.05 |
| 7.93 | 22850072 | 79.92 |
| 8.22 | 19654951 | 90.71 |
| 8.65 | 26250254 | 106.68 |

(26) AR-1254-1 #2 (L6)

| R.T. | Response | Conc |
|------|----------|--------|
| 6.46 | 14629109 | 100.80 |
| 6.62 | 12226305 | 91.39 |
| 7.05 | 30214160 | 126.05 |
| 7.29 | 12378468 | 74.13 |
| 7.72 | 21791772 | 84.57 |

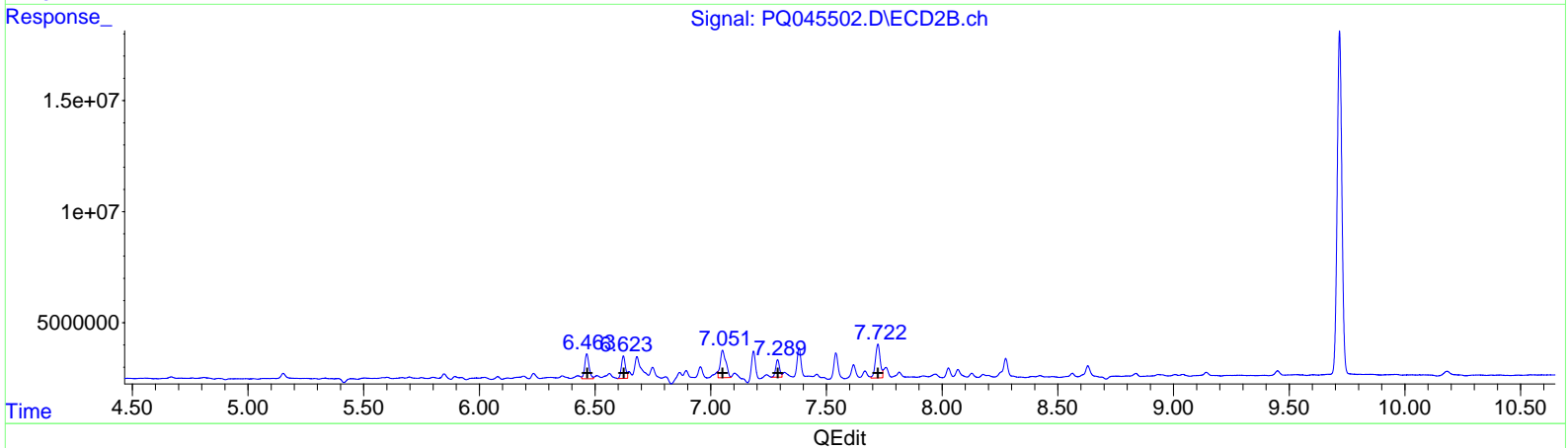
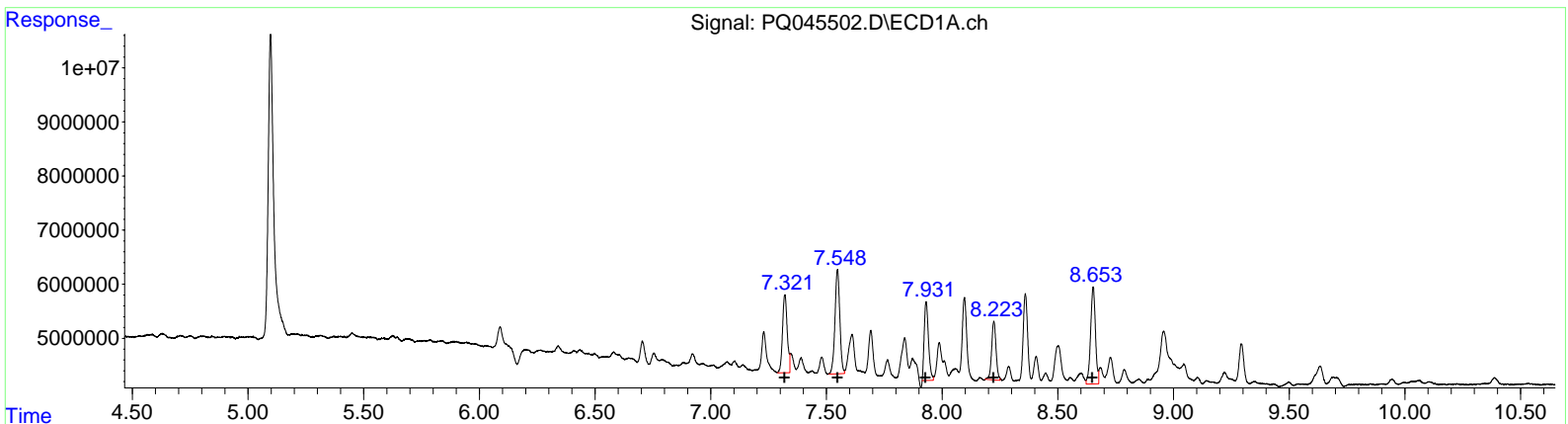
Data Path : Z:\pestpcbsrv\HPCHEM1\ECD_Q\Data\PQ112719\
 Data File : PQ045502.D
 Signal(s) : Signal #1: ECD1A.ch Signal #2: ECD2B.ch
 Acq On : 27 Nov 2019 14:27
 Operator : SM\AJ
 Sample : K6007-04
 Misc :
 ALS Vial : 10 Sample Multiplier: 1

Instrument :
 ECD_Q
Client Sampled :
 C0BL2

Manual Integrations
APPROVED
 mohammad
 11/29/2019 10:39:08 AM

Integration File signal 1: autoint1.e
 Integration File signal 2: autoint2.e
 Quant Time: Nov 29 00:25:27 2019
 Quant Method : Z:\pestpcbsrv\HPCHEM1\ECD_Q\Method\PQ112519CLP.M
 Quant Title : GC EXTRACTABLES
 QLast Update : Tue Nov 26 06:05:49 2019
 Response via : Initial Calibration
 Integrator: ChemStation

Volume Inj. : 1 µl
 Signal #1 Phase : ZB MR1 Signal #2 Phase: ZB MR2
 Signal #1 Info : 30Mx0.32mmx 0.5µm Signal #2 Info : 30M x 0.32mm x 0.25µm



QEdit

| (26) AR-1254-1 (L6) | | |
|------------------------|----------|--------|
| R.T. | Response | Conc |
| 7.32 | 20588988 | 125.15 |
| 7.55 | 28138548 | 107.35 |
| 7.93 | 18768892 | 65.65 |
| 8.22 | 14222236 | 65.64 |
| 8.65 | 26250254 | 106.68 |
| (26) AR-1254-1 #2 (L6) | | |
| R.T. | Response | Conc |
| 6.46 | 14629109 | 100.80 |
| 6.62 | 12226305 | 91.39 |
| 7.05 | 20879527 | 87.11 |
| 7.29 | 9260919 | 55.46 |
| 7.72 | 21791772 | 84.57 |

Data Path : Z:\pestpcbsrv\HPCHEM1\ECD_Q\Data\PQ112719\
 Data File : PQ045502.D
 Signal(s) : Signal #1: ECD1A.ch Signal #2: ECD2B.ch
 Acq On : 27 Nov 2019 14:27
 Operator : SM\AJ
 Sample : K6007-04
 Misc :
 ALS Vial : 10 Sample Multiplier: 1

Instrument :
 ECD_Q
 Client Sampled :
 C0BL2

Integration File signal 1: autoint1.e
 Integration File signal 2: autoint2.e
 Quant Time: Nov 29 00:25:27 2019
 Quant Method : Z:\pestpcbsrv\HPCHEM1\ECD_Q\Method\PQ112519CLP.M
 Quant Title : GC EXTRACTABLES
 QLast Update : Tue Nov 26 06:05:49 2019
 Response via : Initial Calibration
 Integrator: ChemStation

Manual Integrations
 APPROVED

mohammad
 11/29/2019 10:39:08 AM

Volume Inj. : 1 µl
 Signal #1 Phase : ZB MR1 Signal #2 Phase: ZB MR2
 Signal #1 Info : 30Mx0.32mmx 0.5µm Signal #2 Info : 30M x 0.32mm x 0.25µm

| Compound | RT#1 | RT#2 | Resp#1 | Resp#2 | ng/ml | ng/ml |
|-----------------------------|--------|-------|----------|----------|----------|----------|
| ----- | | | | | | |
| System Monitoring Compounds | | | | | | |
| 1) SA Tetrachlo... | 5.098 | 4.305 | 93719329 | 56210203 | 28.490 | 32.955 |
| 2) SA Decachlor... | 11.156 | 9.718 | 280.6E6 | 217.3E6 | 43.009 | 41.531 |
| Target Compounds | | | | | | |
| 26) L6 AR-1254-1 | 7.321 | 6.464 | 20588988 | 14629109 | 125.150m | 100.804 |
| 27) L6 AR-1254-2 | 7.548 | 6.622 | 28138548 | 12226305 | 107.354m | 91.385 |
| 28) L6 AR-1254-3 | 7.931 | 7.051 | 18768892 | 20879527 | 65.649m | 87.105m# |
| 29) L6 AR-1254-4 | 8.223 | 7.289 | 14222236 | 9260919 | 65.636m | 55.464m |
| 30) L6 AR-1254-5 | 8.653 | 7.723 | 26250254 | 21791772 | 106.676 | 84.569 |
| ----- | | | | | | |

} AJ
 11/29/19

(f)=RT Delta > 1/2 Window (#)=Amounts differ by > 25% (m)=manual int.