

Data Path : Z:\pestpcbsrv\HPCHEM1\ECD\_Q\Data\PQ112720\  
 Data File : PQ051352.D  
 Signal(s) : Signal #1: ECD1A.ch Signal #2: ECD2B.ch  
 Acq On : 27 Nov 2020 12:54  
 Operator : DD\AJ  
 Sample : AIBLK33  
 Misc :  
 ALS Vial : 2 Sample Multiplier: 1

Instrument :  
 ECD\_Q  
 ClientSampleId :  
 AIBLK33

Integration File signal 1: autoint1.e  
 Integration File signal 2: autoint2.e  
 Quant Time: Nov 28 00:18:12 2020  
 Quant Method : Z:\pestpcbsrv\HPCHEM1\ECD\_Q\Method\PQ111820CLP.M  
 Quant Title : GC EXTRACTABLES  
 QLast Update : Thu Nov 19 05:59:02 2020  
 Response via : Initial Calibration  
 Integrator: ChemStation

Volume Inj. : 1 µl  
 Signal #1 Phase : ZB MR1 Signal #2 Phase: ZB MR2  
 Signal #1 Info : 30Mx0.32mmx 0.5µm Signal #2 Info : 30M x 0.32mm x 0.25µm

Compound	RT#1	RT#2	Resp#1	Resp#2	ng/ml	ng/ml
-----						
System Monitoring Compounds						
1) SA Tetrachlo...	5.234	4.254	455.6E6	132.0E6	20.122	22.138
2) SA Decachlor...	11.431	9.608	742.0E6	234.4E6	45.221	45.893
Target Compounds						
5) L1 AR-1016-3	0.000	5.756	0	228810	N.D.	1.496 #
6) L1 AR-1016-4	0.000	5.756	0	228810	N.D.	1.886 #
7) L1 AR-1016-5	0.000	6.041	0	1512341	N.D.	9.669 #
8) L2 AR-1221-1	0.000	4.520	0	169440	N.D.	2.754 #
9) L2 AR-1221-2	5.591	4.611	5854191	1971694	38.136	46.096
10) L2 AR-1221-3	0.000	4.639f	0	230831	N.D.	1.574 #
11) L3 AR-1232-1	0.000	4.639f	0	230831	N.D.	1.939 #
13) L3 AR-1232-3	0.000	5.756	0	228810	N.D.	3.606 #
14) L3 AR-1232-4	0.000	5.831	0	99121	N.D.	1.798 #
15) L3 AR-1232-5	0.000	6.041	0	1512341	N.D.	25.292 #
18) L4 AR-1242-3	0.000	5.756	0	228810	N.D.	1.891 #
19) L4 AR-1242-4	0.000	5.831	0	99121	N.D.	0.850 #
20) L4 AR-1242-5	0.000	6.414	0	1768557	N.D.	11.178 #
22) L5 AR-1248-2	0.000	5.756	0	228810	N.D.	1.389 #
23) L5 AR-1248-3	0.000	5.831	0	99121	N.D.	0.581 #
24) L5 AR-1248-4	0.000	6.041	0	1512341	N.D.	7.329 #
25) L5 AR-1248-5	0.000	6.461	0	894078	N.D.	4.168 #
26) L6 AR-1254-1	0.000	6.414	0	1768557	N.D.	4.938 #
27) L6 AR-1254-2	0.000	6.545	0	901261	N.D.	2.909 #
28) L6 AR-1254-3	0.000	7.008	0	1254199	N.D.	2.427 #
29) L6 AR-1254-4	0.000	7.215	0	419694	N.D.	1.289 #
30) L6 AR-1254-5	0.000	7.635	0	2973925	N.D.	6.554 #
31) L7 AR-1260-1	0.000	7.130	0	2328854	N.D.	7.567 #
32) L7 AR-1260-2	0.000	7.294	0	1065632	N.D.	2.746 #
33) L7 AR-1260-3	0.000	7.447	0	2026578	N.D.	5.610 #
34) L7 AR-1260-4	0.000	7.954	0	324533	N.D.	1.036 #
35) L7 AR-1260-5	0.000	8.184	0	1017288	N.D.	1.295 #
36) L8 AR-1262-1	0.000	7.635	0	2973925	N.D.	12.785 #
37) L8 AR-1262-2	0.000	8.184	0	1017288	N.D.	1.182 #
38) L8 AR-1262-3	0.000	8.469	0	322014	N.D.	1.027 #
39) L8 AR-1262-4	0.000	8.541	0	677100	N.D.	1.103 #
40) L8 AR-1262-5	0.000	9.051	0	1301792	N.D.	4.685 #
41) L9 AR-1268-1	0.000	8.469	0	322014	N.D.	0.342 #
42) L9 AR-1268-2	0.000	8.541	0	677100	N.D.	0.762 #
43) L9 AR-1268-3	0.000	8.752	0	2234406	N.D.	2.982 #
44) L9 AR-1268-4	0.000	9.051	0	1301792	N.D.	4.150 #
45) L9 AR-1268-5	0.000	9.344	0	2069355	N.D.	0.850 #
-----						

(f)=RT Delta > 1/2 Window (#)=Amounts differ by > 25% (m)=manual int.

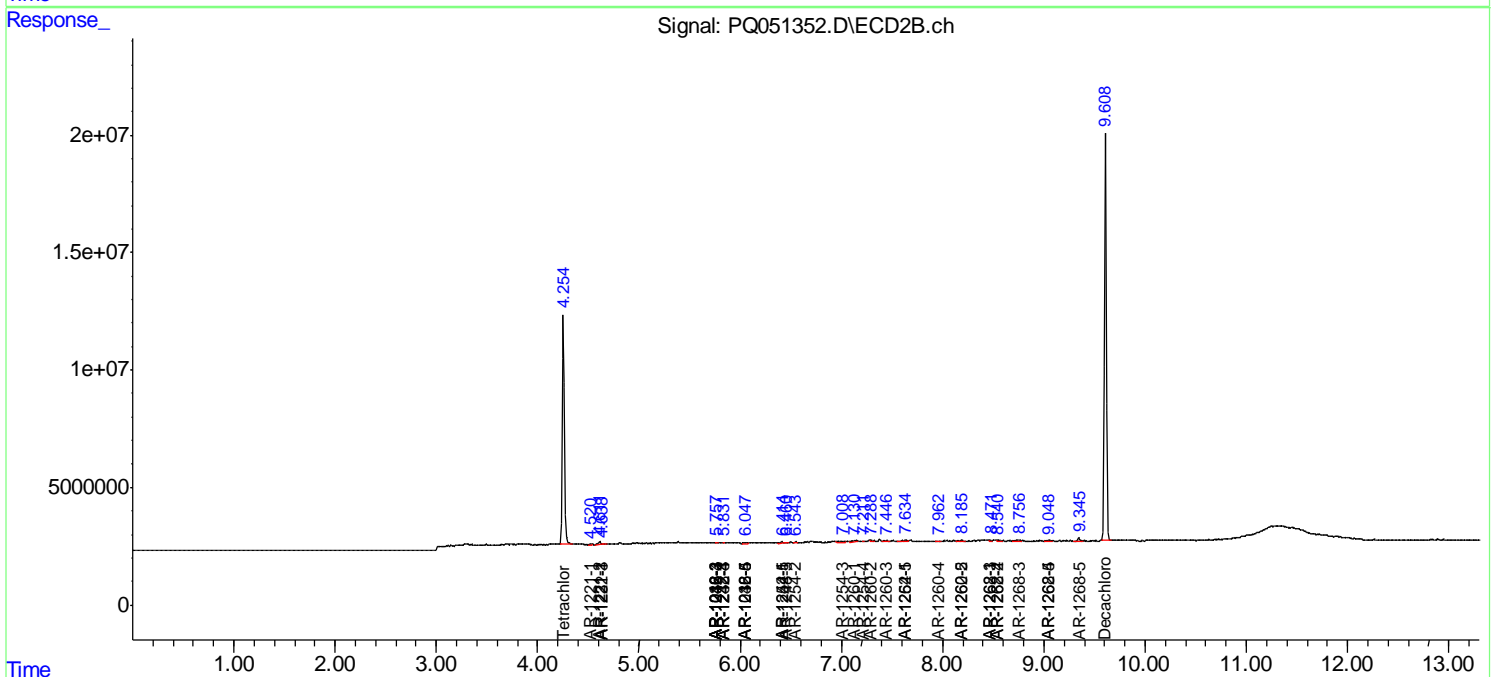
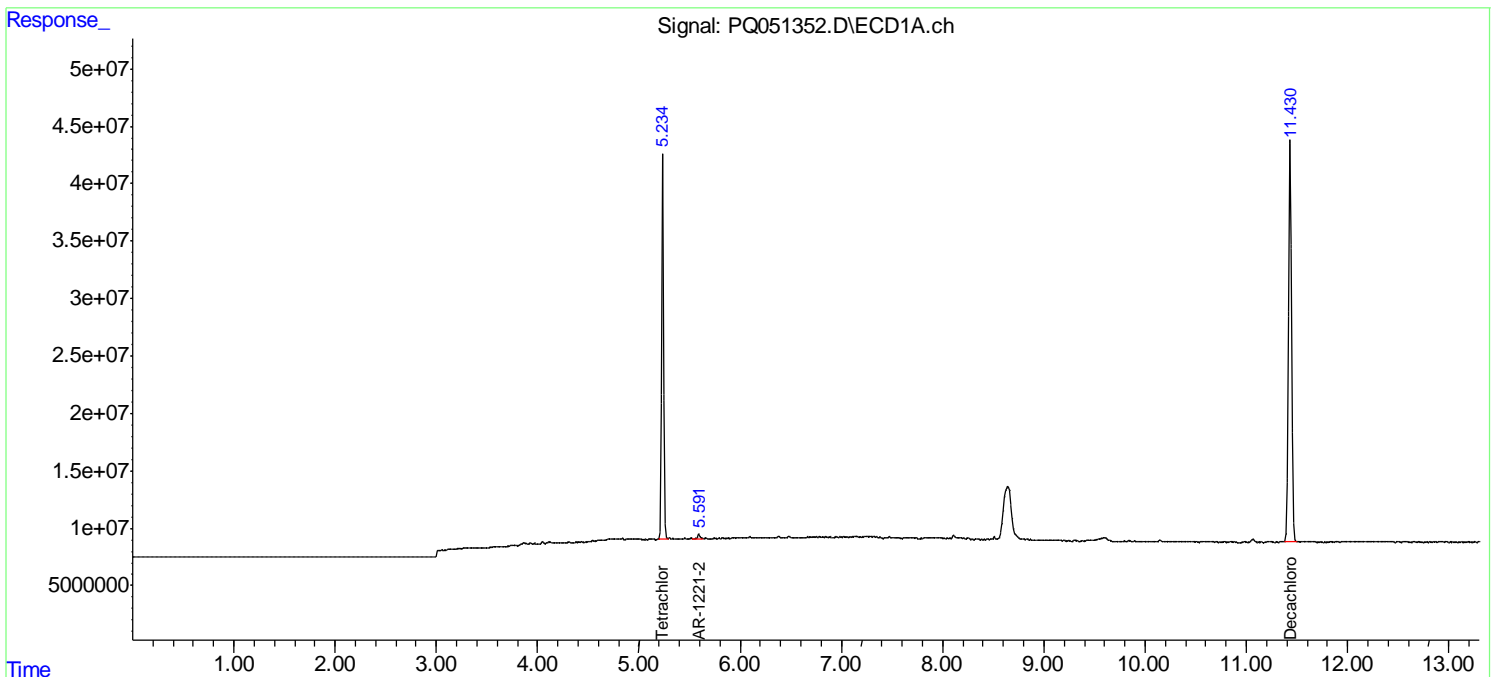
**Instrument :**  
ECD\_Q  
**ClientSampleId :**  
AIBLK33

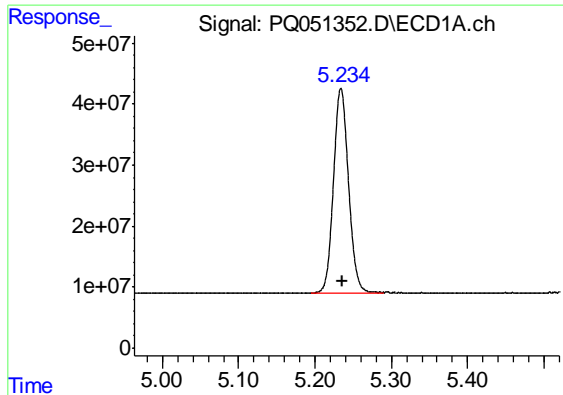
Data Path : Z:\pestpcbsrv\HPCHEM1\ECD\_Q\Data\PQ112720\  
 Data File : PQ051352.D  
 Signal(s) : Signal #1: ECD1A.ch Signal #2: ECD2B.ch  
 Acq On : 27 Nov 2020 12:54  
 Operator : DD\AJ  
 Sample : AIBLK33  
 Misc :  
 ALS Vial : 2 Sample Multiplier: 1

**Instrument :**  
 ECD\_Q  
**Client Sampled :**  
 AIBLK33

Integration File signal 1: autoint1.e  
 Integration File signal 2: autoint2.e  
 Quant Time: Nov 28 00:18:12 2020  
 Quant Method : Z:\pestpcbsrv\HPCHEM1\ECD\_Q\Method\PQ111820CLP.M  
 Quant Title : GC EXTRACTABLES  
 QLast Update : Thu Nov 19 05:59:02 2020  
 Response via : Initial Calibration  
 Integrator: ChemStation

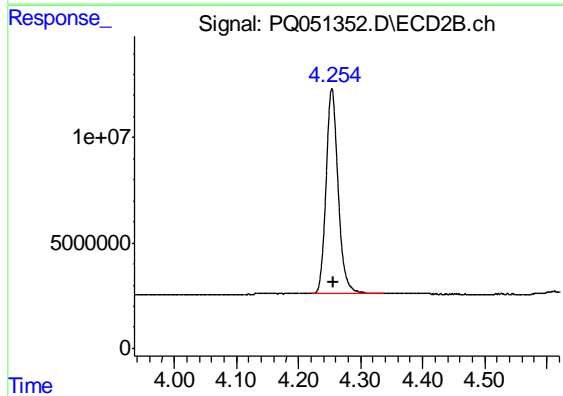
Volume Inj. : 1 µl  
 Signal #1 Phase : ZB MR1 Signal #2 Phase: ZB MR2  
 Signal #1 Info : 30Mx0.32mmx 0.5µm Signal #2 Info : 30M x 0.32mm x 0.25µm



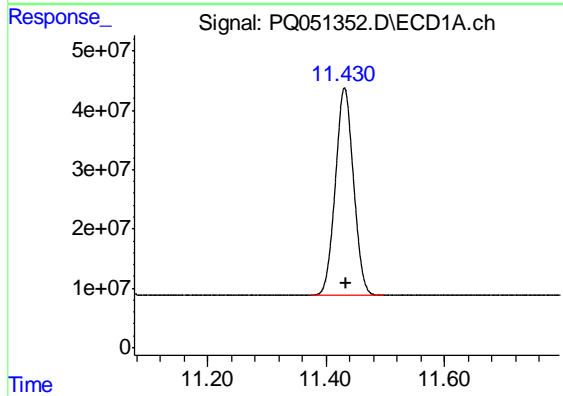


#1 Tetrachloro-m-xylene  
 R.T.: 5.234 min  
 Delta R.T.: -0.002 min  
 Response: 455592970  
 Conc: 20.12 ng/ml

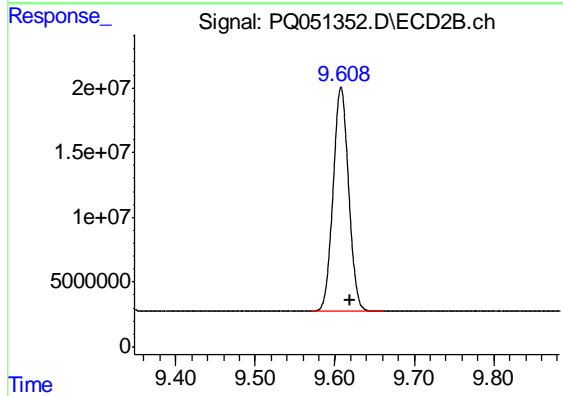
Instrument :  
 ECD\_Q  
 ClientSampleId :  
 AIBLK33



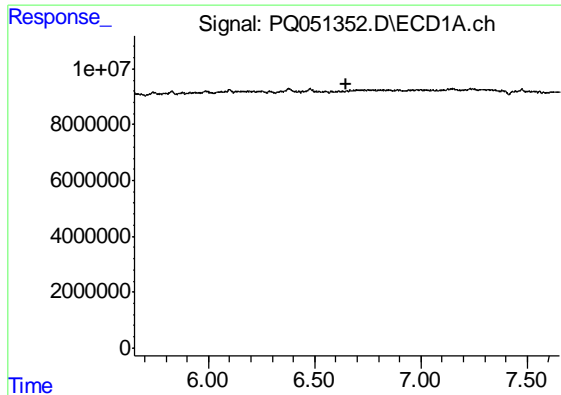
#1 Tetrachloro-m-xylene  
 R.T.: 4.254 min  
 Delta R.T.: -0.003 min  
 Response: 131987557  
 Conc: 22.14 ng/ml



#2 Decachlorobiphenyl  
 R.T.: 11.431 min  
 Delta R.T.: -0.004 min  
 Response: 742033966  
 Conc: 45.22 ng/ml



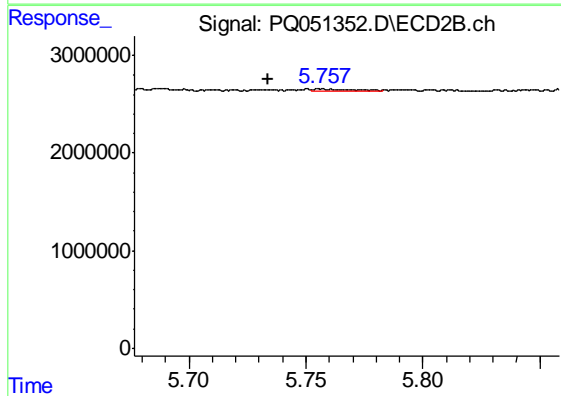
#2 Decachlorobiphenyl  
 R.T.: 9.608 min  
 Delta R.T.: -0.011 min  
 Response: 234362003  
 Conc: 45.89 ng/ml



#5 AR-1016-3

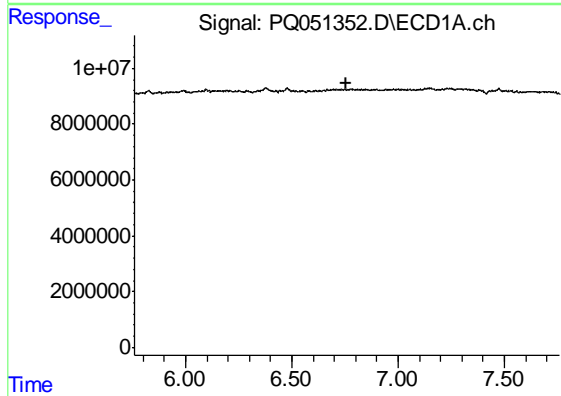
R.T.: 0.000 min  
 Exp R.T. : 6.651 min  
 Response: 0  
 Conc: N.D.

Instrument :  
 ECD\_Q  
 ClientSampleId :  
 AIBLK33



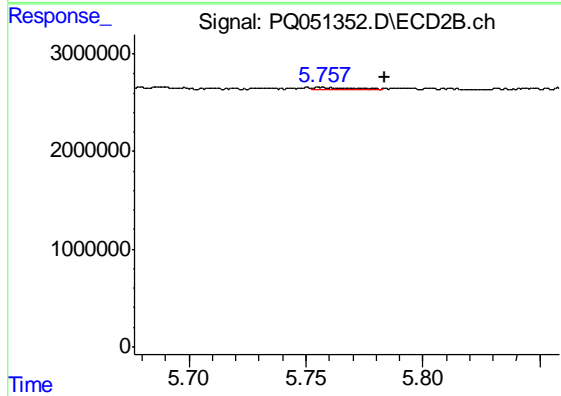
#5 AR-1016-3

R.T.: 5.756 min  
 Delta R.T.: 0.022 min  
 Response: 228810  
 Conc: 1.50 ng/ml



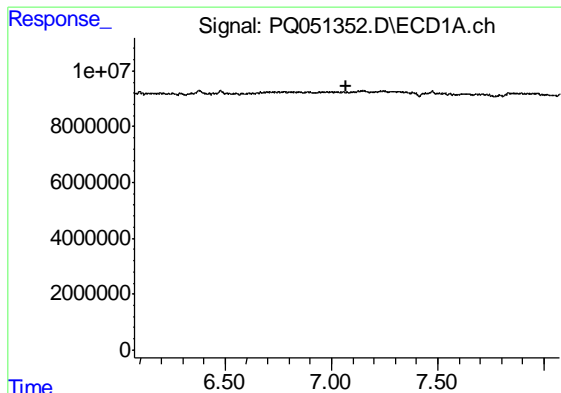
#6 AR-1016-4

R.T.: 0.000 min  
 Exp R.T. : 6.759 min  
 Response: 0  
 Conc: N.D.



#6 AR-1016-4

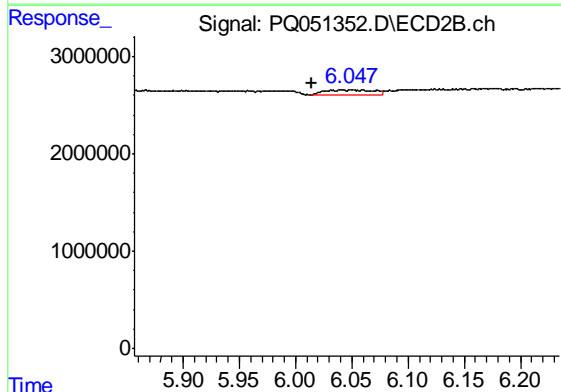
R.T.: 5.756 min  
 Delta R.T.: -0.028 min  
 Response: 228810  
 Conc: 1.89 ng/ml



#7 AR-1016-5

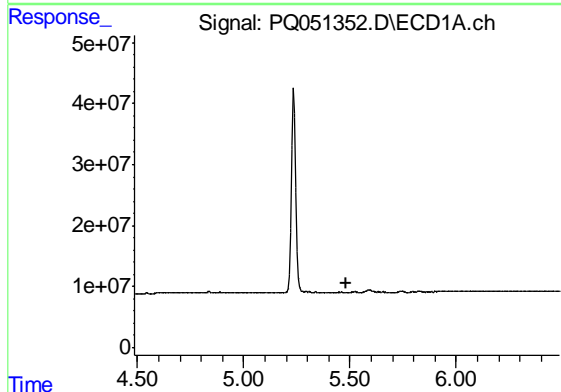
R.T.: 0.000 min  
 Exp R.T. : 7.073 min  
 Response: 0  
 Conc: N.D.

Instrument :  
 ECD\_Q  
 ClientSampleId :  
 AIBLK33



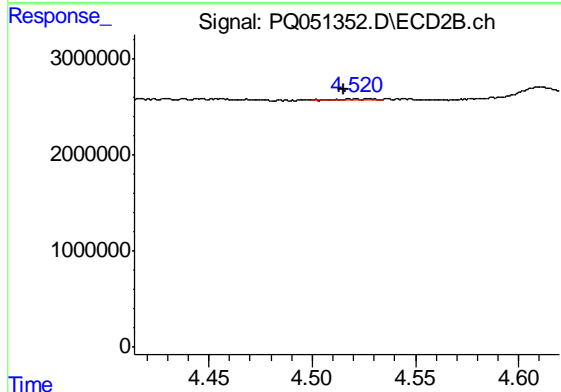
#7 AR-1016-5

R.T.: 6.041 min  
 Delta R.T.: 0.027 min  
 Response: 1512341  
 Conc: 9.67 ng/ml



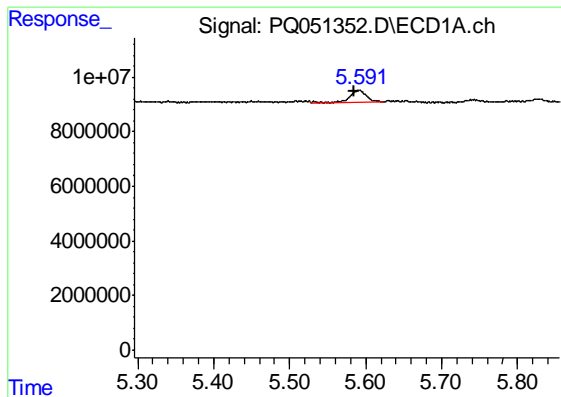
#8 AR-1221-1

R.T.: 0.000 min  
 Exp R.T. : 5.486 min  
 Response: 0  
 Conc: N.D.



#8 AR-1221-1

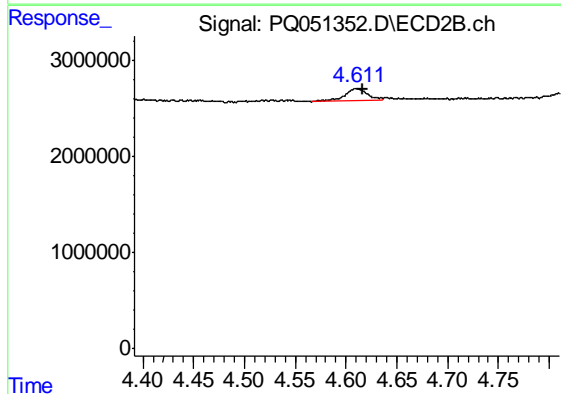
R.T.: 4.520 min  
 Delta R.T.: 0.005 min  
 Response: 169440  
 Conc: 2.75 ng/ml



#9 AR-1221-2

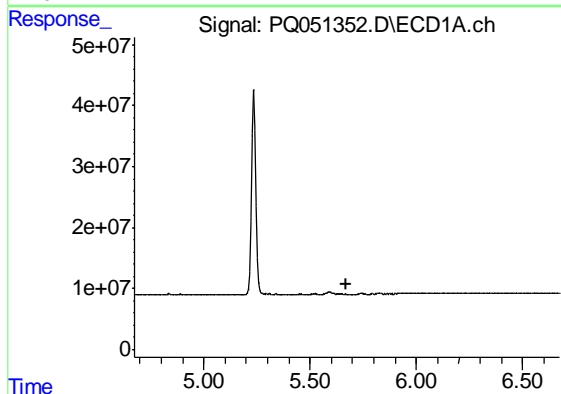
R.T.: 5.591 min  
 Delta R.T.: 0.007 min  
 Response: 5854191  
 Conc: 38.14 ng/ml

Instrument :  
 ECD\_Q  
 ClientSampleId :  
 AIBLK33



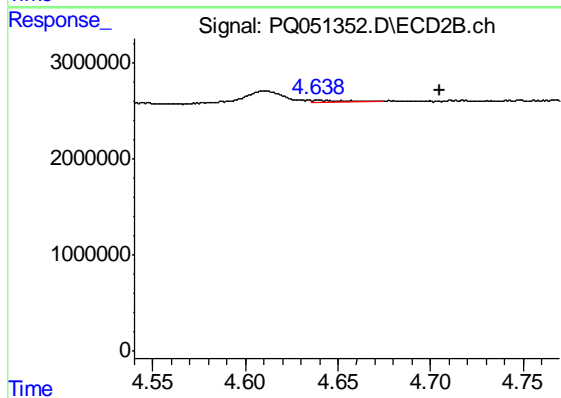
#9 AR-1221-2

R.T.: 4.611 min  
 Delta R.T.: -0.005 min  
 Response: 1971694  
 Conc: 46.10 ng/ml



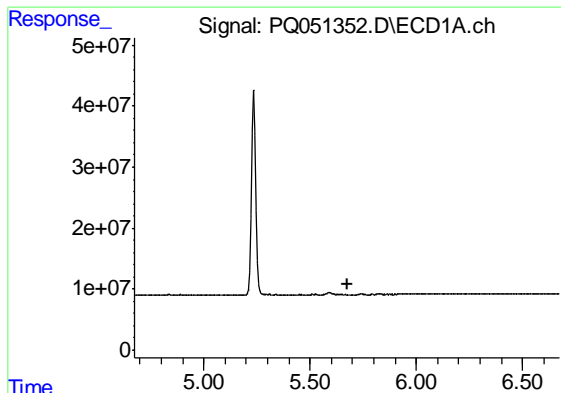
#10 AR-1221-3

R.T.: 0.000 min  
 Exp R.T. : 5.673 min  
 Response: 0  
 Conc: N.D.



#10 AR-1221-3

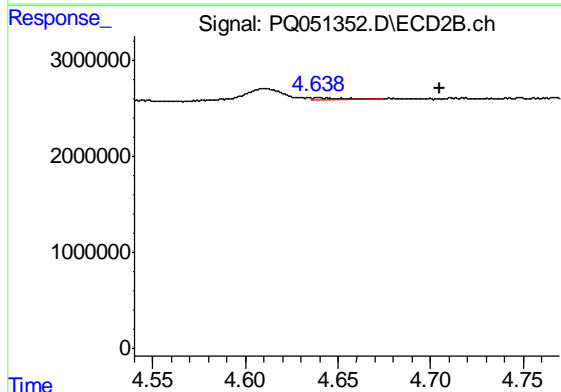
R.T.: 4.639 min  
 Delta R.T.: -0.066 min  
 Response: 230831  
 Conc: 1.57 ng/ml



#11 AR-1232-1

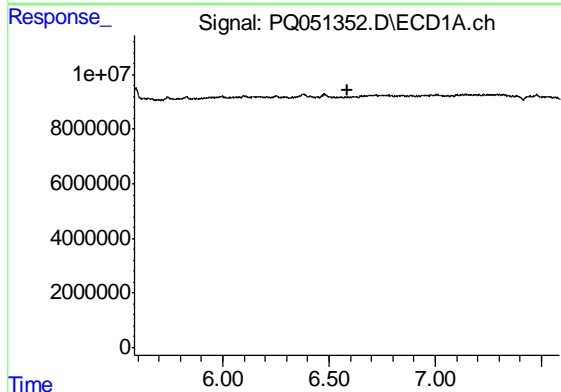
R.T.: 0.000 min  
 Exp R.T. : 5.674 min  
 Response: 0  
 Conc: N.D.

Instrument :  
 ECD\_Q  
 ClientSampleId :  
 AIBLK33



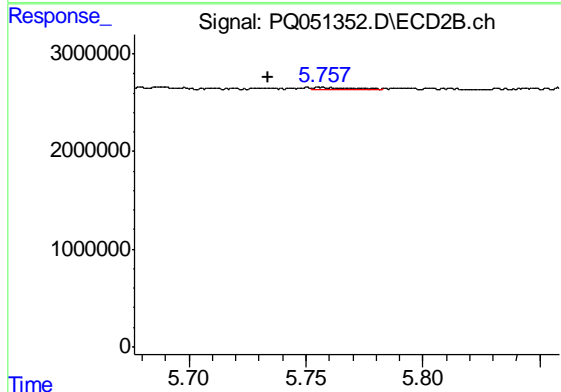
#11 AR-1232-1

R.T.: 4.639 min  
 Delta R.T.: -0.066 min  
 Response: 230831  
 Conc: 1.94 ng/ml



#13 AR-1232-3

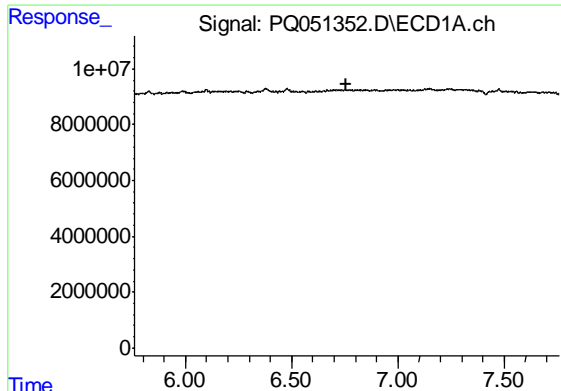
R.T.: 0.000 min  
 Exp R.T. : 6.584 min  
 Response: 0  
 Conc: N.D.



#13 AR-1232-3

R.T.: 5.756 min  
 Delta R.T.: 0.022 min  
 Response: 228810  
 Conc: 3.61 ng/ml

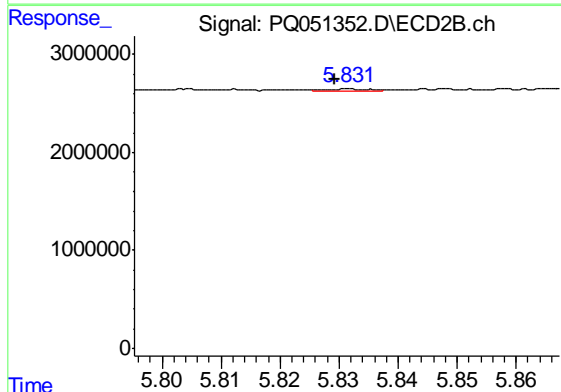




#14 AR-1232-4

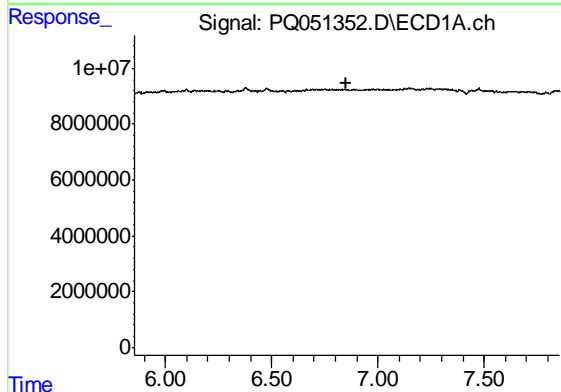
R.T.: 0.000 min  
 Exp R.T. : 6.760 min  
 Response: 0  
 Conc: N.D.

Instrument :  
 ECD\_Q  
 ClientSampleId :  
 AIBLK33



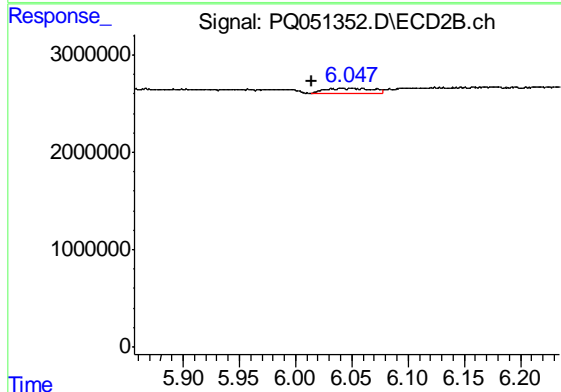
#14 AR-1232-4

R.T.: 5.831 min  
 Delta R.T.: 0.002 min  
 Response: 99121  
 Conc: 1.80 ng/ml



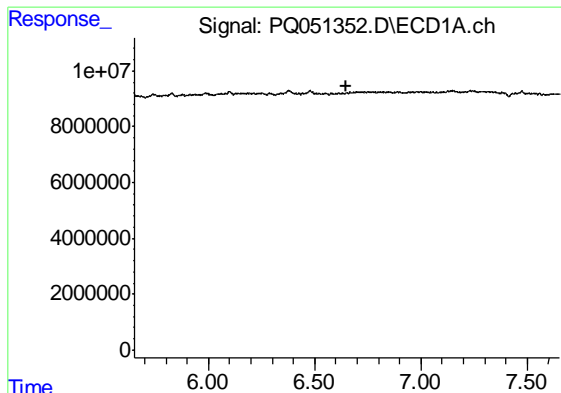
#15 AR-1232-5

R.T.: 0.000 min  
 Exp R.T. : 6.854 min  
 Response: 0  
 Conc: N.D.



#15 AR-1232-5

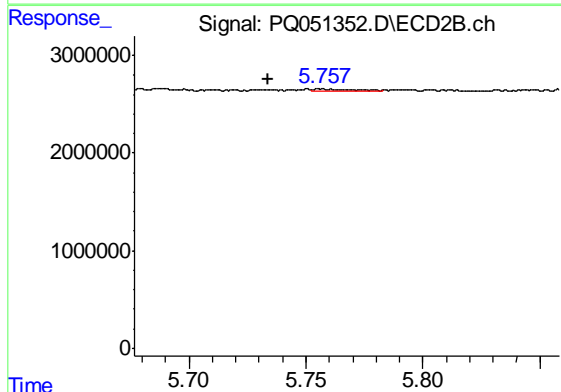
R.T.: 6.041 min  
 Delta R.T.: 0.027 min  
 Response: 1512341  
 Conc: 25.29 ng/ml



#18 AR-1242-3

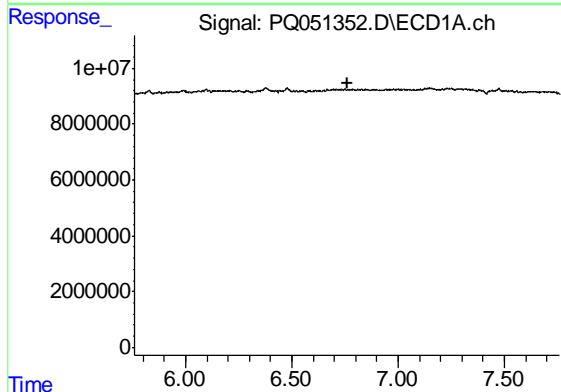
R.T.: 0.000 min  
 Exp R.T. : 6.651 min  
 Response: 0  
 Conc: N.D.

Instrument :  
 ECD\_Q  
 ClientSampleId :  
 AIBLK33



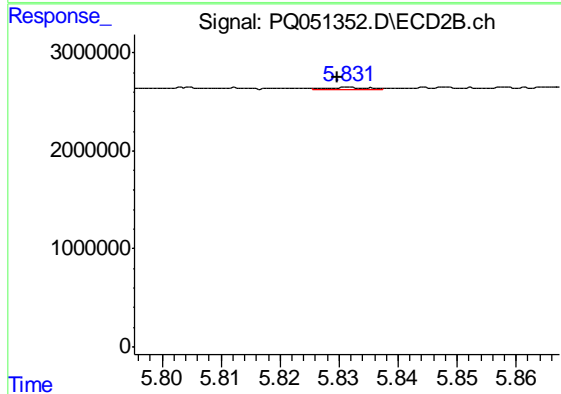
#18 AR-1242-3

R.T.: 5.756 min  
 Delta R.T.: 0.022 min  
 Response: 228810  
 Conc: 1.89 ng/ml



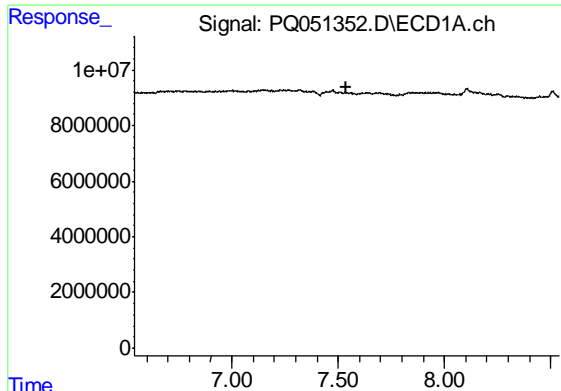
#19 AR-1242-4

R.T.: 0.000 min  
 Exp R.T. : 6.759 min  
 Response: 0  
 Conc: N.D.



#19 AR-1242-4

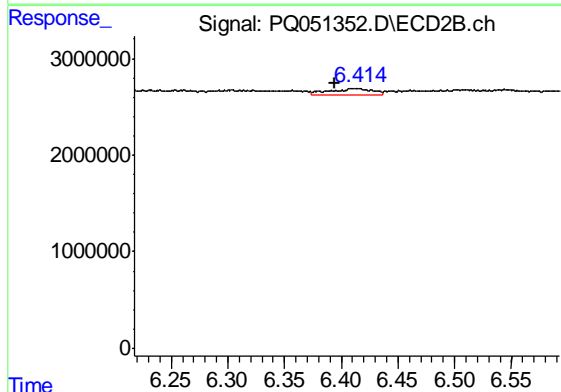
R.T.: 5.831 min  
 Delta R.T.: 0.002 min  
 Response: 99121  
 Conc: 0.85 ng/ml



#20 AR-1242-5

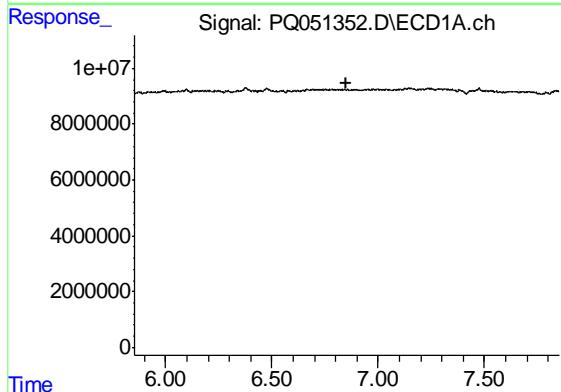
R.T.: 0.000 min  
Exp R.T. : 7.541 min  
Response: 0  
Conc: N.D.

Instrument :  
ECD\_Q  
ClientSampleId :  
AIBLK33



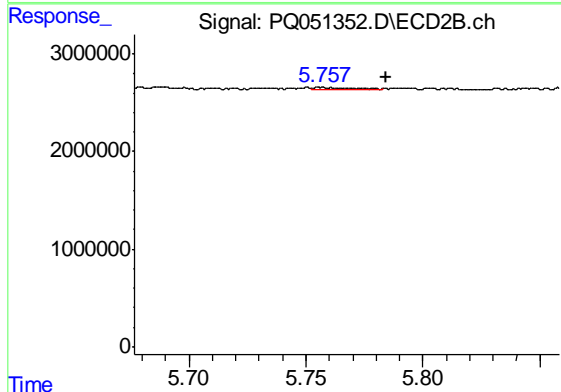
#20 AR-1242-5

R.T.: 6.414 min  
Delta R.T.: 0.020 min  
Response: 1768557  
Conc: 11.18 ng/ml



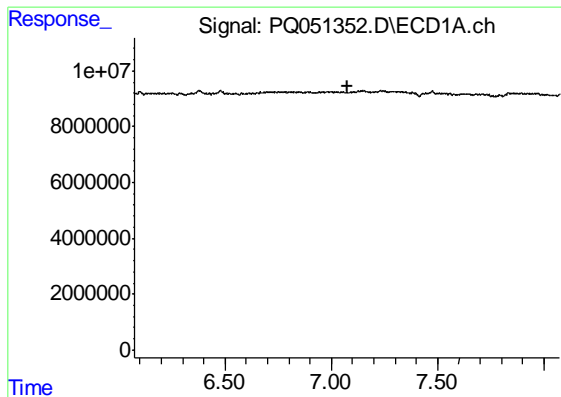
#22 AR-1248-2

R.T.: 0.000 min  
Exp R.T. : 6.854 min  
Response: 0  
Conc: N.D.



#22 AR-1248-2

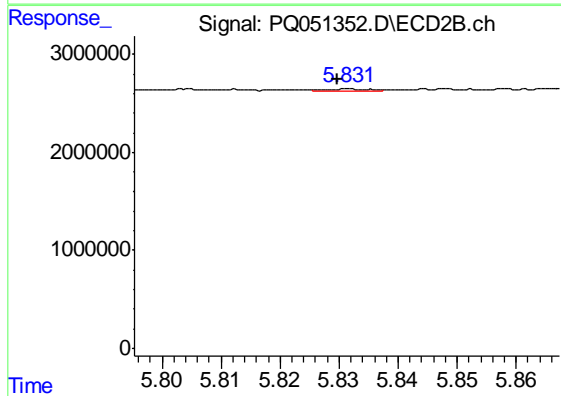
R.T.: 5.756 min  
Delta R.T.: -0.028 min  
Response: 228810  
Conc: 1.39 ng/ml



#23 AR-1248-3

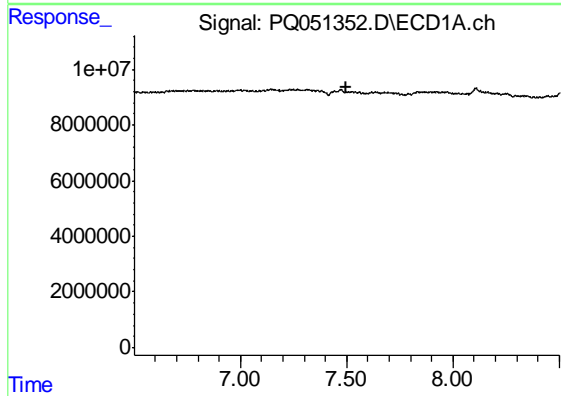
R.T.: 0.000 min  
 Exp R.T. : 7.073 min  
 Response: 0  
 Conc: N.D.

Instrument :  
 ECD\_Q  
 ClientSampleId :  
 AIBLK33



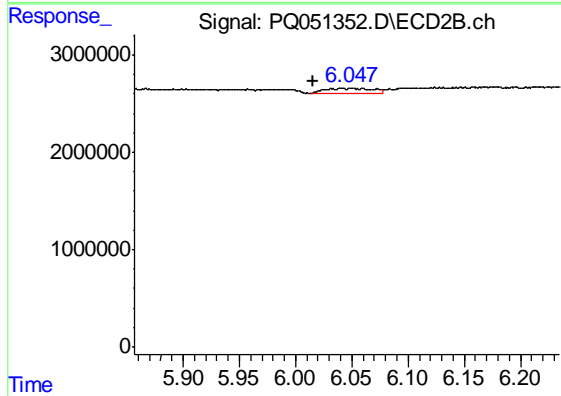
#23 AR-1248-3

R.T.: 5.831 min  
 Delta R.T.: 0.002 min  
 Response: 99121  
 Conc: 0.58 ng/ml



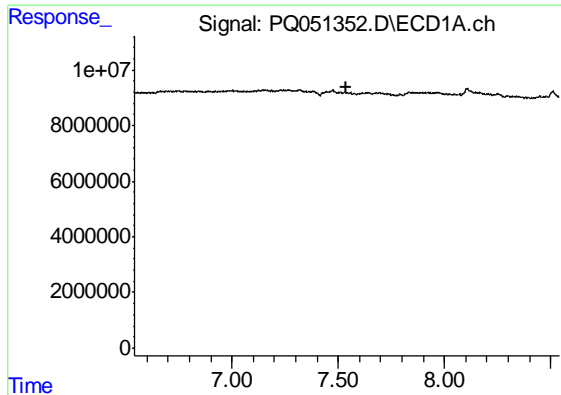
#24 AR-1248-4

R.T.: 0.000 min  
 Exp R.T. : 7.501 min  
 Response: 0  
 Conc: N.D.



#24 AR-1248-4

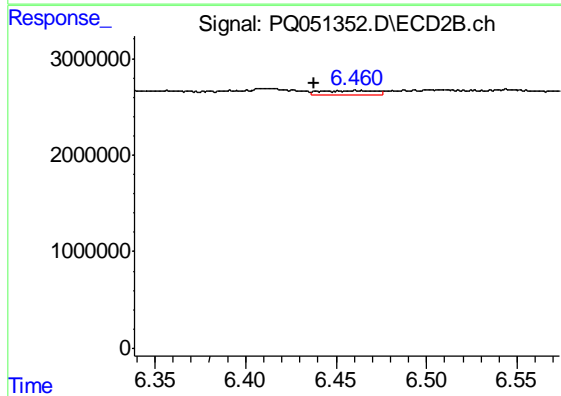
R.T.: 6.041 min  
 Delta R.T.: 0.026 min  
 Response: 1512341  
 Conc: 7.33 ng/ml



#25 AR-1248-5

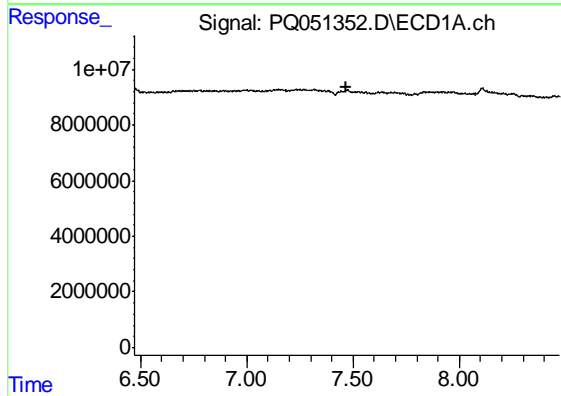
R.T.: 0.000 min  
 Exp R.T. : 7.541 min  
 Response: 0  
 Conc: N.D.

Instrument :  
 ECD\_Q  
 ClientSampleId :  
 AIBLK33



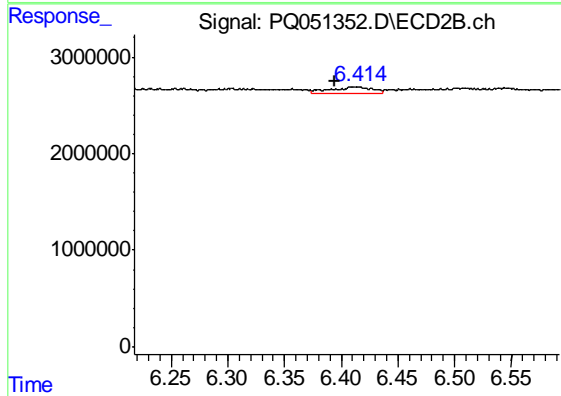
#25 AR-1248-5

R.T.: 6.461 min  
 Delta R.T.: 0.023 min  
 Response: 894078  
 Conc: 4.17 ng/ml



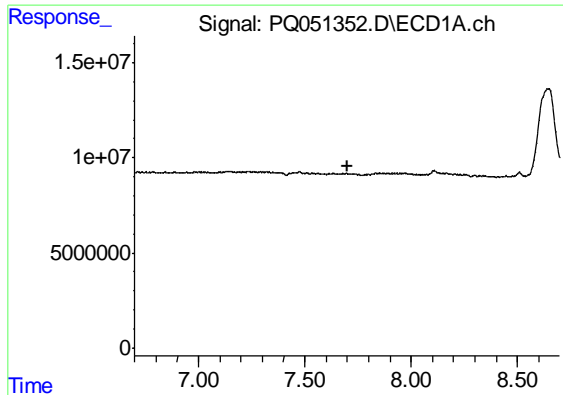
#26 AR-1254-1

R.T.: 0.000 min  
 Exp R.T. : 7.471 min  
 Response: 0  
 Conc: N.D.



#26 AR-1254-1

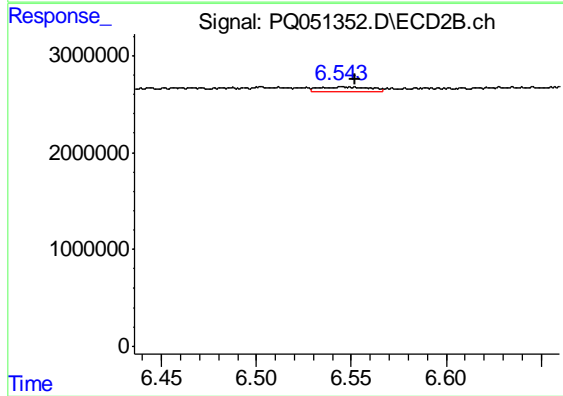
R.T.: 6.414 min  
 Delta R.T.: 0.020 min  
 Response: 1768557  
 Conc: 4.94 ng/ml



#27 AR-1254-2

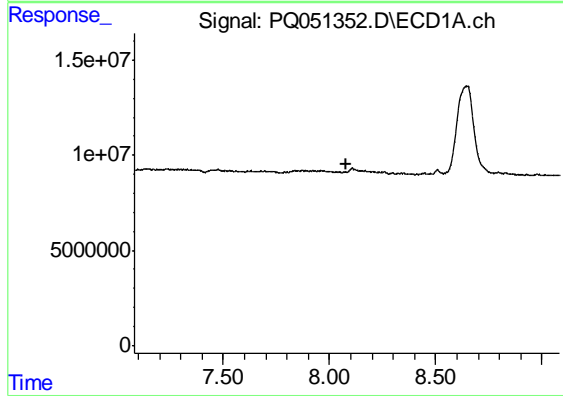
R.T.: 0.000 min  
 Exp R.T. : 7.698 min  
 Response: 0  
 Conc: N.D.

Instrument :  
 ECD\_Q  
 ClientSampleId :  
 AIBLK33



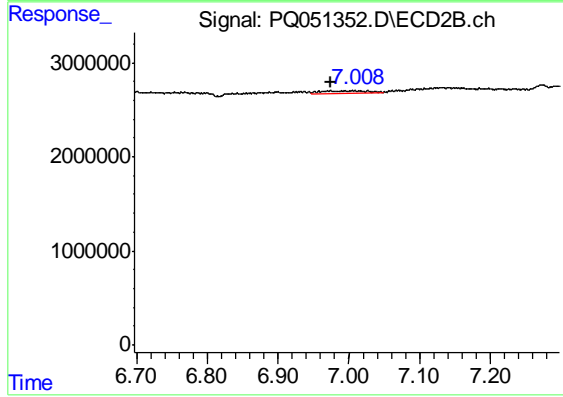
#27 AR-1254-2

R.T.: 6.545 min  
 Delta R.T.: -0.007 min  
 Response: 901261  
 Conc: 2.91 ng/ml



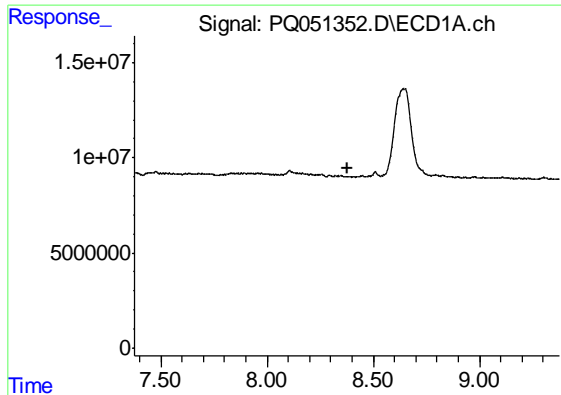
#28 AR-1254-3

R.T.: 0.000 min  
 Exp R.T. : 8.082 min  
 Response: 0  
 Conc: N.D.



#28 AR-1254-3

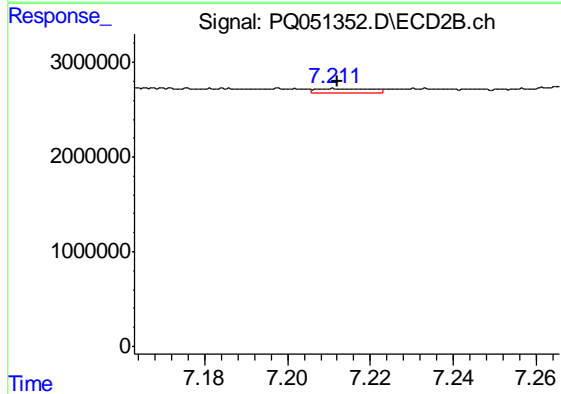
R.T.: 7.008 min  
 Delta R.T.: 0.034 min  
 Response: 1254199  
 Conc: 2.43 ng/ml



#29 AR-1254-4

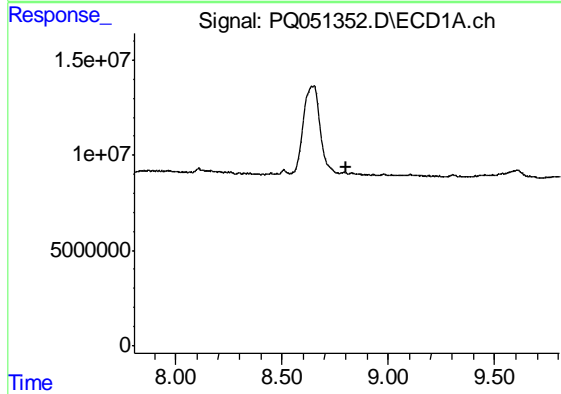
R.T.: 0.000 min  
 Exp R.T. : 8.376 min  
 Response: 0  
 Conc: N.D.

Instrument :  
 ECD\_Q  
 ClientSampled :  
 AIBLK33



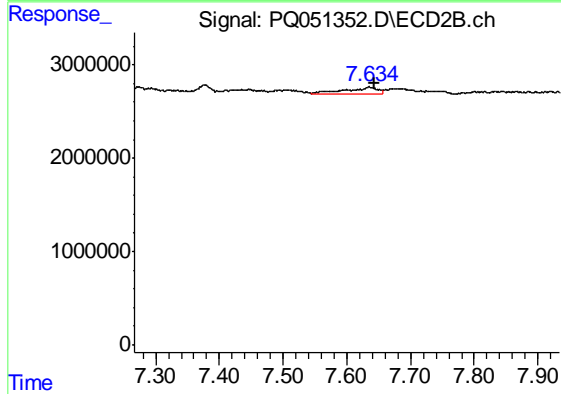
#29 AR-1254-4

R.T.: 7.215 min  
 Delta R.T.: 0.004 min  
 Response: 419694  
 Conc: 1.29 ng/ml



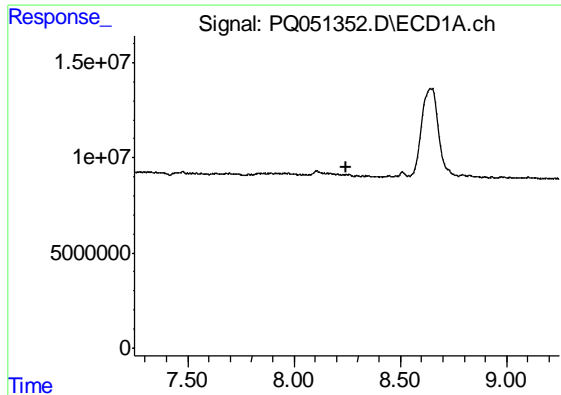
#30 AR-1254-5

R.T.: 0.000 min  
 Exp R.T. : 8.806 min  
 Response: 0  
 Conc: N.D.



#30 AR-1254-5

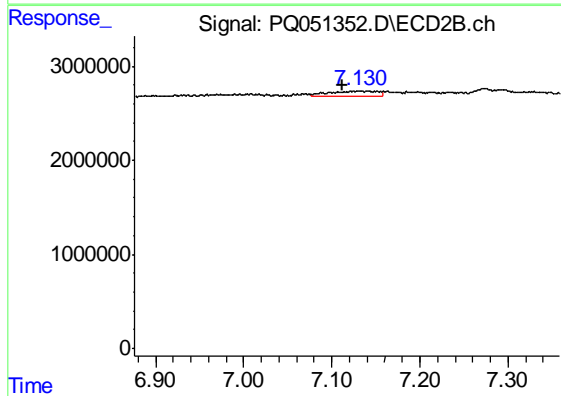
R.T.: 7.635 min  
 Delta R.T.: -0.007 min  
 Response: 2973925  
 Conc: 6.55 ng/ml



#31 AR-1260-1

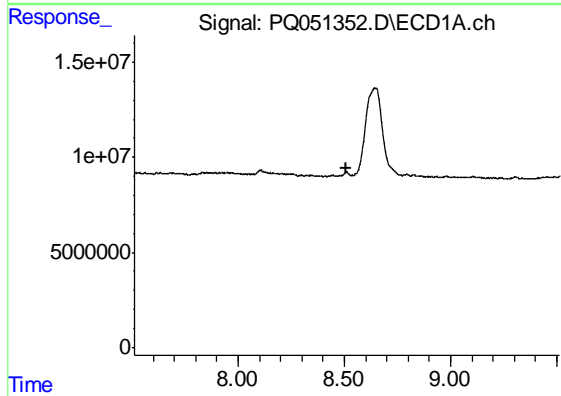
R.T.: 0.000 min  
 Exp R.T. : 8.249 min  
 Response: 0  
 Conc: N.D.

Instrument :  
 ECD\_Q  
 ClientSampleId :  
 AIBLK33



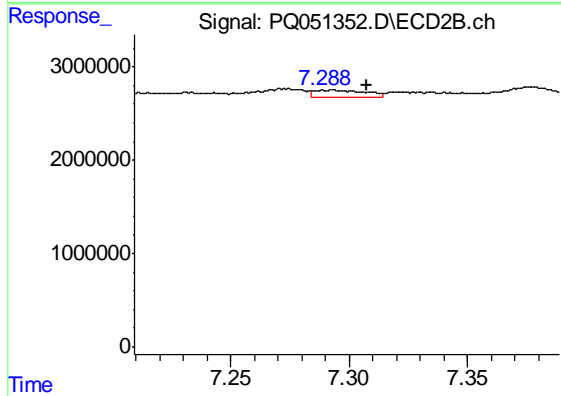
#31 AR-1260-1

R.T.: 7.130 min  
 Delta R.T.: 0.018 min  
 Response: 2328854  
 Conc: 7.57 ng/ml



#32 AR-1260-2

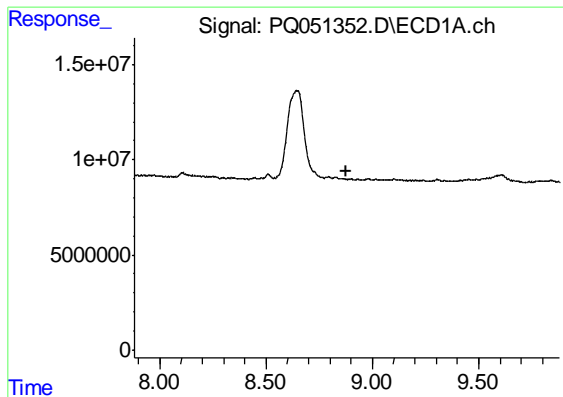
R.T.: 0.000 min  
 Exp R.T. : 8.512 min  
 Response: 0  
 Conc: N.D.



#32 AR-1260-2

R.T.: 7.294 min  
 Delta R.T.: -0.014 min  
 Response: 1065632  
 Conc: 2.75 ng/ml

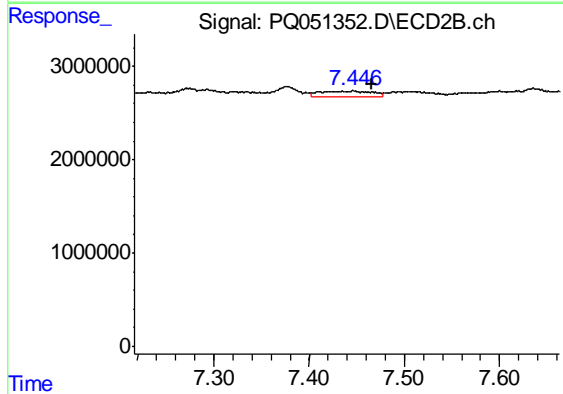




#33 AR-1260-3

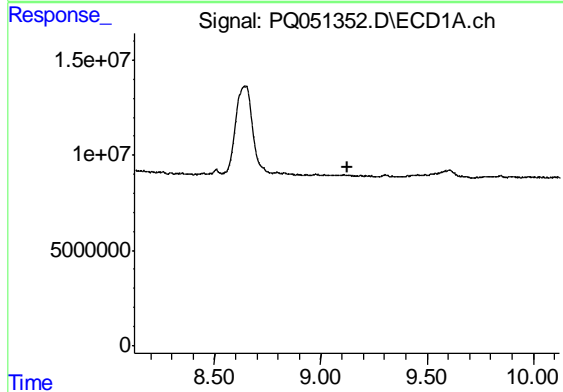
R.T.: 0.000 min  
 Exp R.T. : 8.880 min  
 Response: 0  
 Conc: N.D.

Instrument :  
 ECD\_Q  
 ClientSampleId :  
 AIBLK33



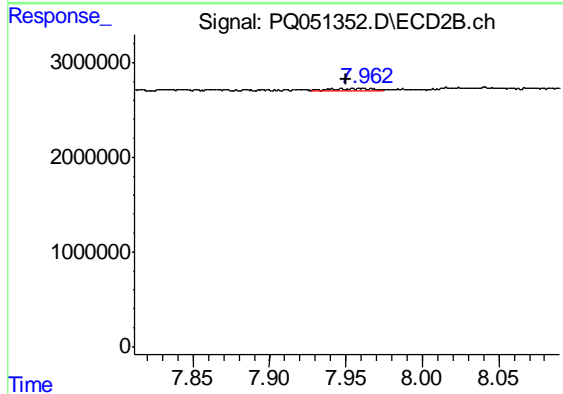
#33 AR-1260-3

R.T.: 7.447 min  
 Delta R.T.: -0.019 min  
 Response: 2026578  
 Conc: 5.61 ng/ml



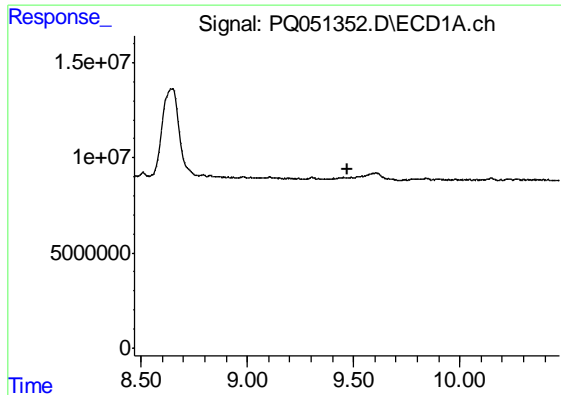
#34 AR-1260-4

R.T.: 0.000 min  
 Exp R.T. : 9.124 min  
 Response: 0  
 Conc: N.D.



#34 AR-1260-4

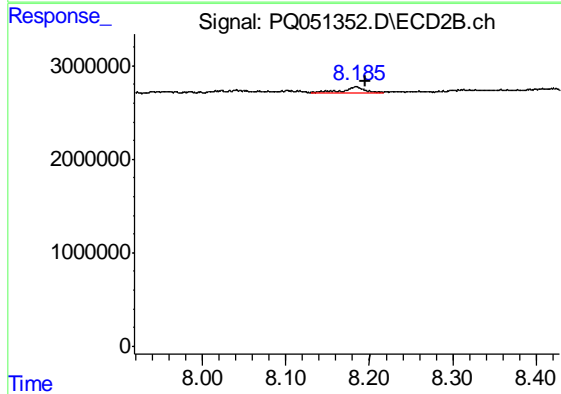
R.T.: 7.954 min  
 Delta R.T.: 0.004 min  
 Response: 324533  
 Conc: 1.04 ng/ml



#35 AR-1260-5

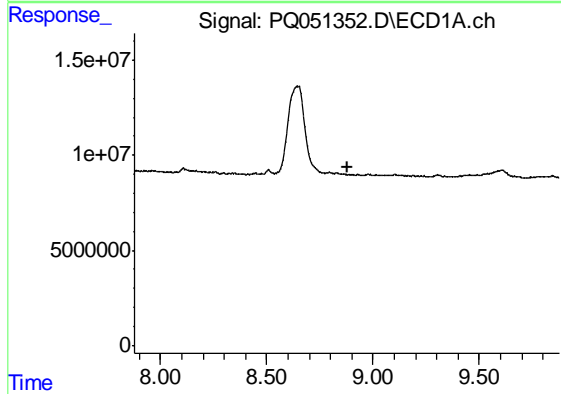
R.T.: 0.000 min  
 Exp R.T. : 9.469 min  
 Response: 0  
 Conc: N.D.

Instrument :  
 ECD\_Q  
 ClientSampled :  
 AIBLK33



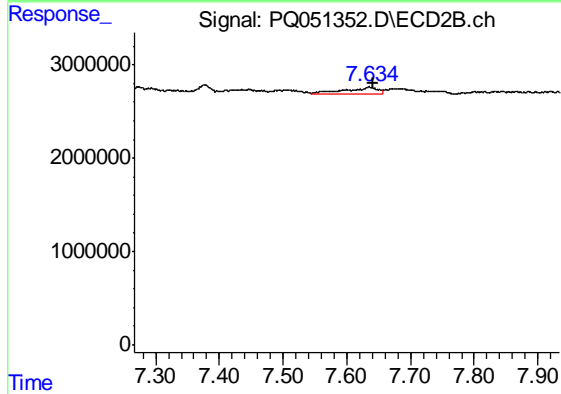
#35 AR-1260-5

R.T.: 8.184 min  
 Delta R.T.: -0.011 min  
 Response: 1017288  
 Conc: 1.29 ng/ml



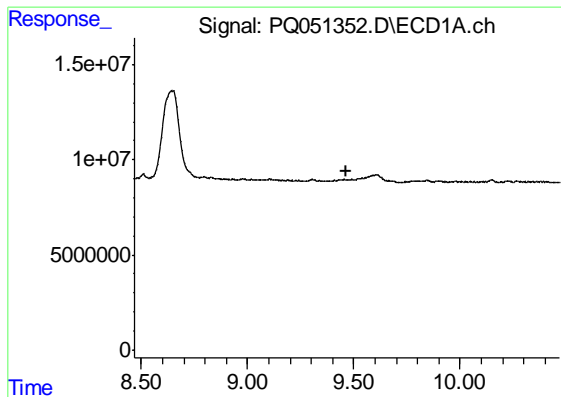
#36 AR-1262-1

R.T.: 0.000 min  
 Exp R.T. : 8.877 min  
 Response: 0  
 Conc: N.D.



#36 AR-1262-1

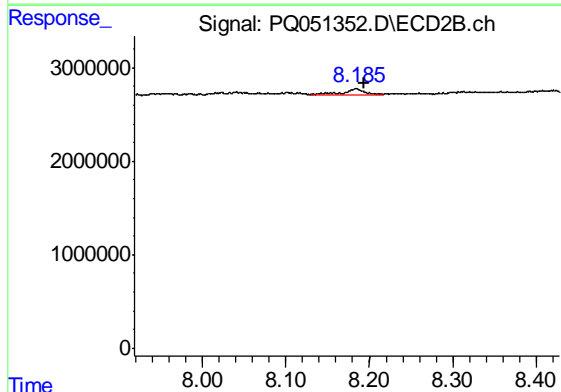
R.T.: 7.635 min  
 Delta R.T.: -0.006 min  
 Response: 2973925  
 Conc: 12.79 ng/ml



#37 AR-1262-2

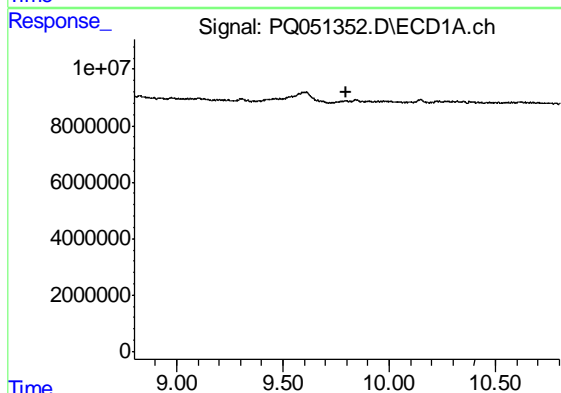
R.T.: 0.000 min  
 Exp R.T. : 9.467 min  
 Response: 0  
 Conc: N.D.

Instrument :  
 ECD\_Q  
 ClientSampled :  
 AIBLK33



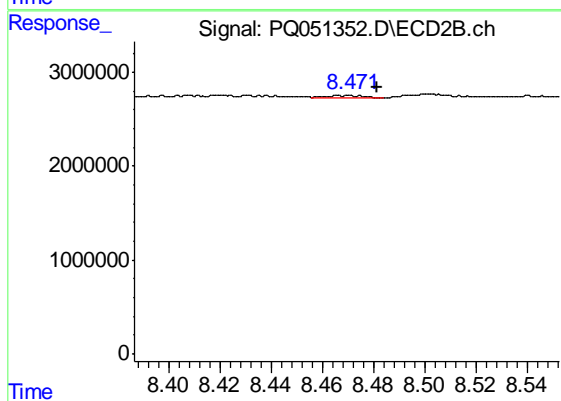
#37 AR-1262-2

R.T.: 8.184 min  
 Delta R.T.: -0.009 min  
 Response: 1017288  
 Conc: 1.18 ng/ml



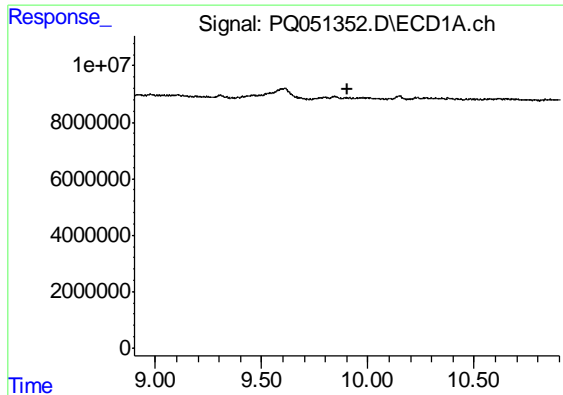
#38 AR-1262-3

R.T.: 0.000 min  
 Exp R.T. : 9.801 min  
 Response: 0  
 Conc: N.D.



#38 AR-1262-3

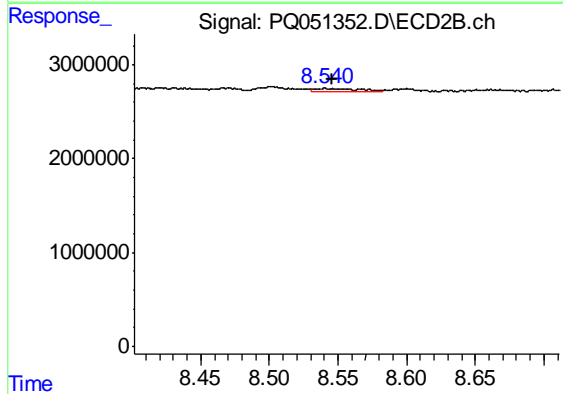
R.T.: 8.469 min  
 Delta R.T.: -0.013 min  
 Response: 322014  
 Conc: 1.03 ng/ml



#39 AR-1262-4

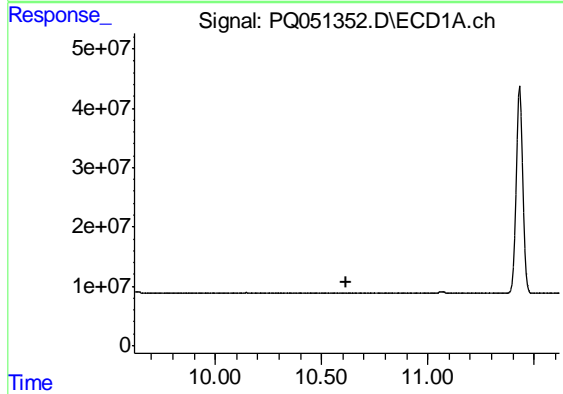
R.T.: 0.000 min  
 Exp R.T. : 9.901 min  
 Response: 0  
 Conc: N.D.

Instrument :  
 ECD\_Q  
 ClientSampleId :  
 AIBLK33



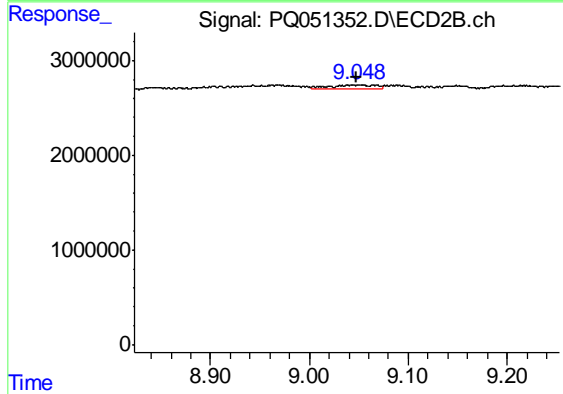
#39 AR-1262-4

R.T.: 8.541 min  
 Delta R.T.: -0.005 min  
 Response: 677100  
 Conc: 1.10 ng/ml



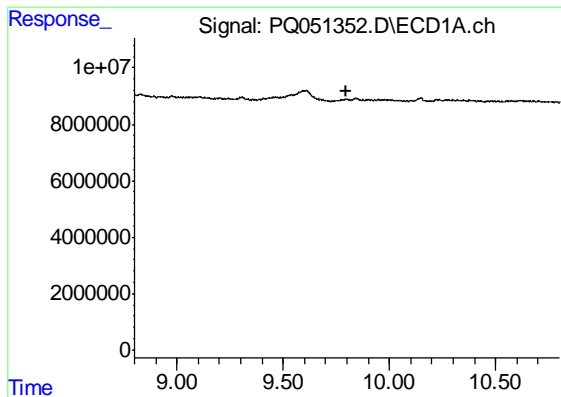
#40 AR-1262-5

R.T.: 0.000 min  
 Exp R.T. : 10.619 min  
 Response: 0  
 Conc: N.D.



#40 AR-1262-5

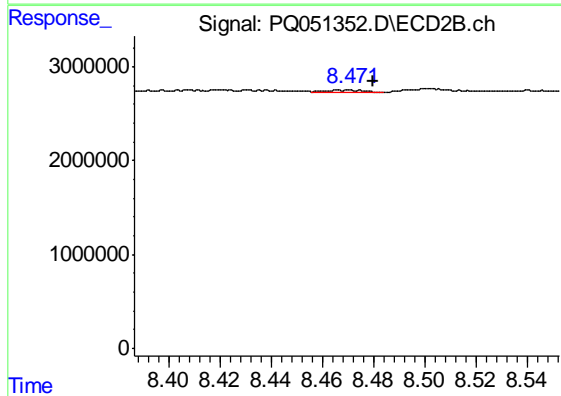
R.T.: 9.051 min  
 Delta R.T.: 0.003 min  
 Response: 1301792  
 Conc: 4.68 ng/ml



#41 AR-1268-1

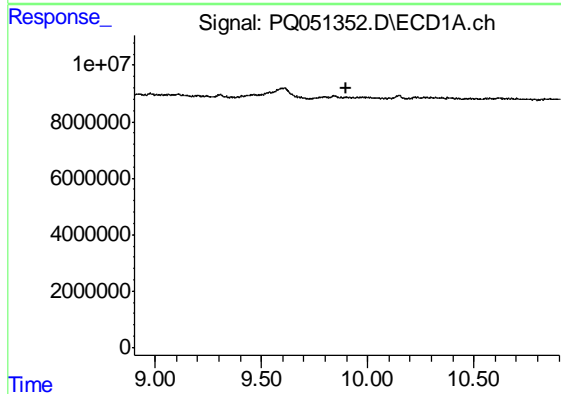
R.T.: 0.000 min  
 Exp R.T. : 9.800 min  
 Response: 0  
 Conc: N.D.

Instrument :  
 ECD\_Q  
 ClientSampleId :  
 AIBLK33



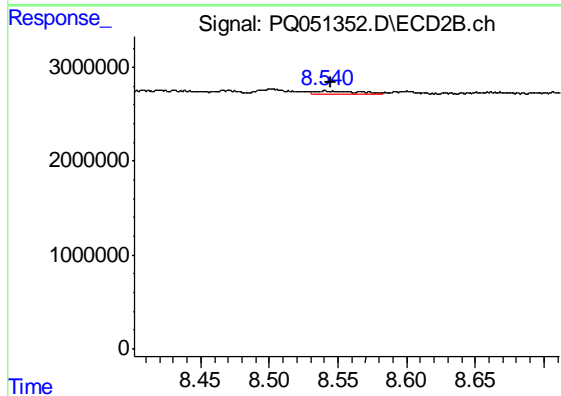
#41 AR-1268-1

R.T.: 8.469 min  
 Delta R.T.: -0.011 min  
 Response: 322014  
 Conc: 0.34 ng/ml



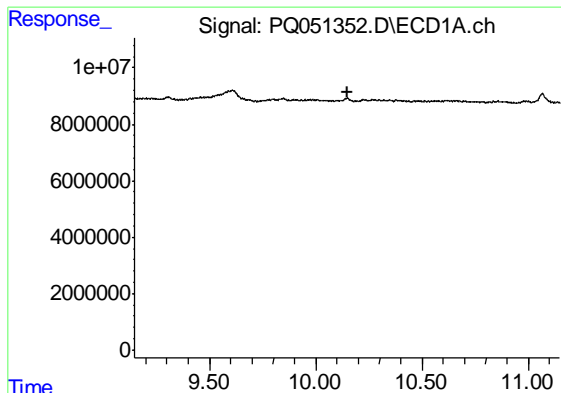
#42 AR-1268-2

R.T.: 0.000 min  
 Exp R.T. : 9.902 min  
 Response: 0  
 Conc: N.D.



#42 AR-1268-2

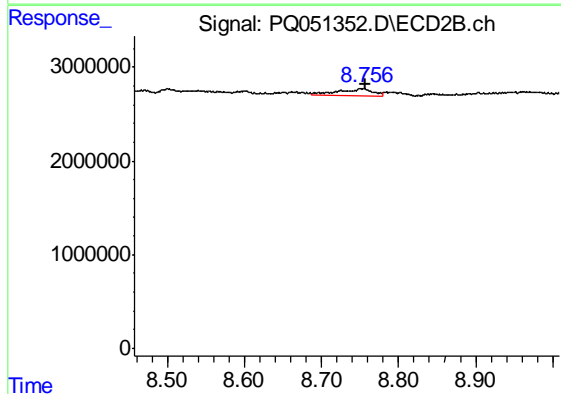
R.T.: 8.541 min  
 Delta R.T.: -0.004 min  
 Response: 677100  
 Conc: 0.76 ng/ml



#43 AR-1268-3

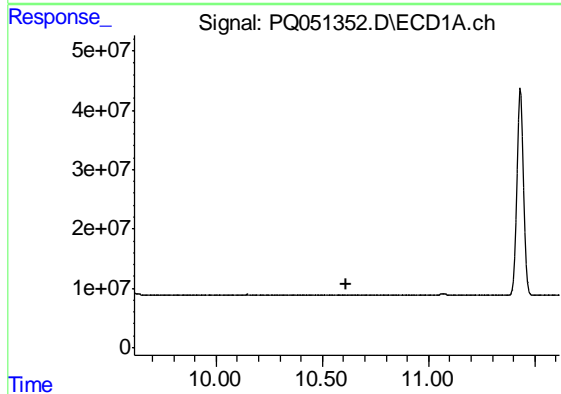
R.T.: 0.000 min  
 Exp R.T. : 10.147 min  
 Response: 0  
 Conc: N.D.

Instrument :  
 ECD\_Q  
 ClientSampleId :  
 AIBLK33



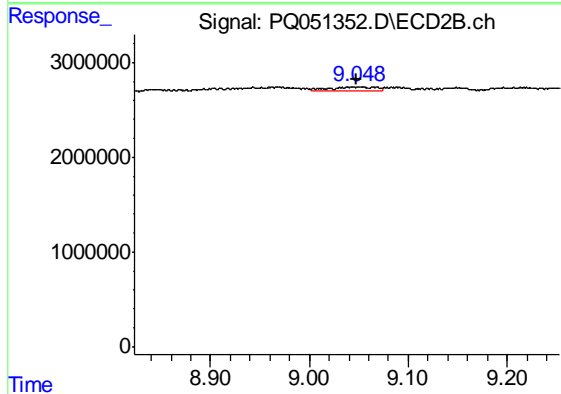
#43 AR-1268-3

R.T.: 8.752 min  
 Delta R.T.: -0.005 min  
 Response: 2234406  
 Conc: 2.98 ng/ml



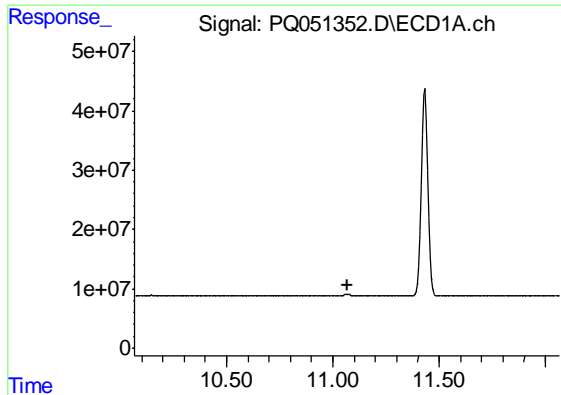
#44 AR-1268-4

R.T.: 0.000 min  
 Exp R.T. : 10.616 min  
 Response: 0  
 Conc: N.D.



#44 AR-1268-4

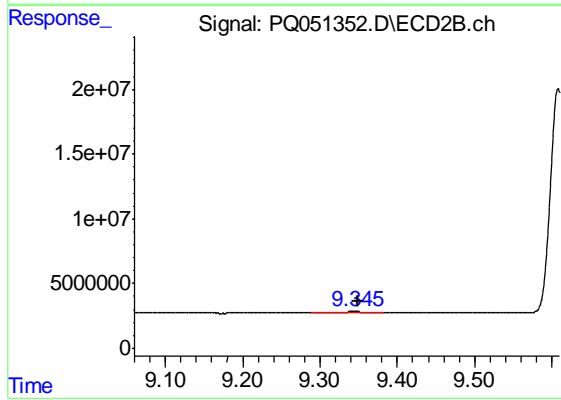
R.T.: 9.051 min  
 Delta R.T.: 0.003 min  
 Response: 1301792  
 Conc: 4.15 ng/ml



#45 AR-1268-5

R.T.: 0.000 min  
 Exp R.T. : 11.066 min  
 Response: 0  
 Conc: N.D.

Instrument :  
 ECD\_Q  
 ClientSampleId :  
 AIBLK33



#45 AR-1268-5

R.T.: 9.344 min  
 Delta R.T.: -0.006 min  
 Response: 2069355  
 Conc: 0.85 ng/ml