

Data Path : Z:\pestpcbsrv\HPCHEM1\ECD_Q\Data\PQ120519\
 Data File : PQ045647.D
 Signal(s) : Signal #1: ECD1A.ch Signal #2: ECD2B.ch
 Acq On : 05 Dec 2019 22:45
 Operator : SM\AJ
 Sample : AR1242IC100
 Misc :
 ALS Vial : 18 Sample Multiplier: 1

Instrument :
 ECD_Q
 ClientSampleId :
 AR1242101

Integration File signal 1: autoint1.e
 Integration File signal 2: autoint2.e
 Quant Time: Dec 06 04:45:07 2019
 Quant Method : Z:\pestpcbsrv\HPCHEM1\ECD_Q\Method\PQ120519CLP.M
 Quant Title : GC EXTRACTABLES
 QLast Update : Fri Dec 06 04:44:32 2019
 Response via : Initial Calibration
 Integrator: ChemStation

Volume Inj. : 1 µl
 Signal #1 Phase : ZB MR1 Signal #2 Phase: ZB MR2
 Signal #1 Info : 30Mx0.32mmx 0.5µm Signal #2 Info : 30M x 0.32mm x 0.25µm

Compound	RT#1	RT#2	Resp#1	Resp#2	ng/ml	ng/ml

System Monitoring Compounds						
1) SA Tetrachlo...	5.233	4.362	21467209	24271291	5.459	5.319
2) SA Decachlor...	11.399	9.813	112.4E6	82535566	10.853	10.218
Target Compounds						
16) L4 AR-1242-1	6.548	5.647	17136784	13860299	124.353	113.066
17) L4 AR-1242-2	6.572	5.668	25706850	20357489	120.351	109.238
18) L4 AR-1242-3	6.640	5.865	17019836	9999692	128.936	105.562
19) L4 AR-1242-4	6.746	5.958	13953844	11331533	128.478	109.784
20) L4 AR-1242-5	7.529	6.530	15660090	13656526	112.774	102.587

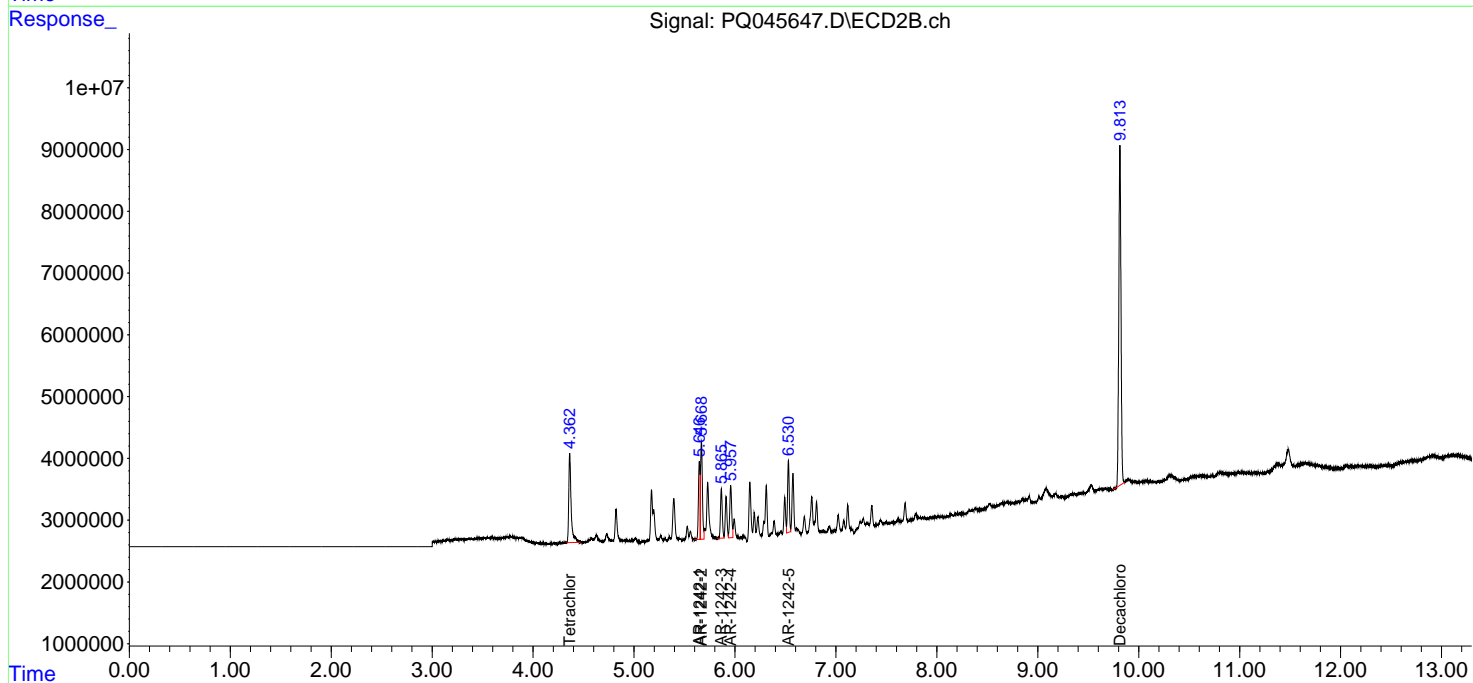
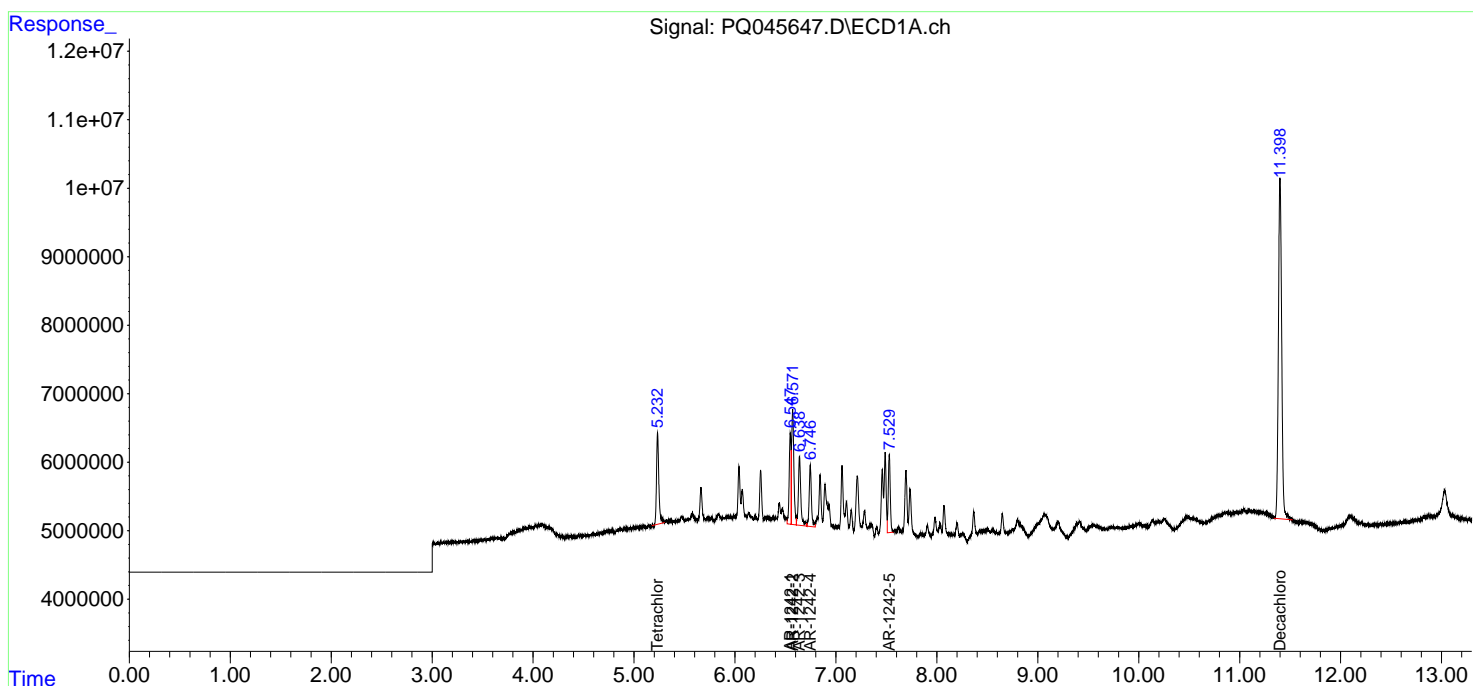
(f)=RT Delta > 1/2 Window (#)=Amounts differ by > 25% (m)=manual int.

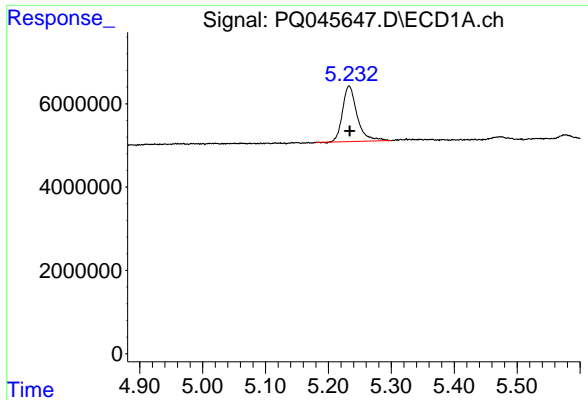
Data Path : Z:\pestpcbsrv\HPCHEM1\ECD_Q\Data\PQ120519\
 Data File : PQ045647.D
 Signal(s) : Signal #1: ECD1A.ch Signal #2: ECD2B.ch
 Acq On : 05 Dec 2019 22:45
 Operator : SM\AJ
 Sample : AR1242ICC100
 Misc :
 ALS Vial : 18 Sample Multiplier: 1

Instrument :
 ECD_Q
 ClientSampleId :
 AR1242101

Integration File signal 1: autoint1.e
 Integration File signal 2: autoint2.e
 Quant Time: Dec 06 04:45:07 2019
 Quant Method : Z:\pestpcbsrv\HPCHEM1\ECD_Q\Method\PQ120519CLP.M
 Quant Title : GC EXTRACTABLES
 QLast Update : Fri Dec 06 04:44:32 2019
 Response via : Initial Calibration
 Integrator: ChemStation

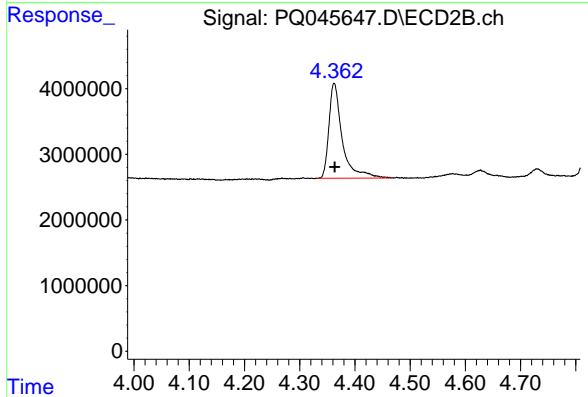
Volume Inj. : 1 µl
 Signal #1 Phase : ZB MR1 Signal #2 Phase: ZB MR2
 Signal #1 Info : 30Mx0.32mmx 0.5µm Signal #2 Info : 30M x 0.32mm x 0.25µm



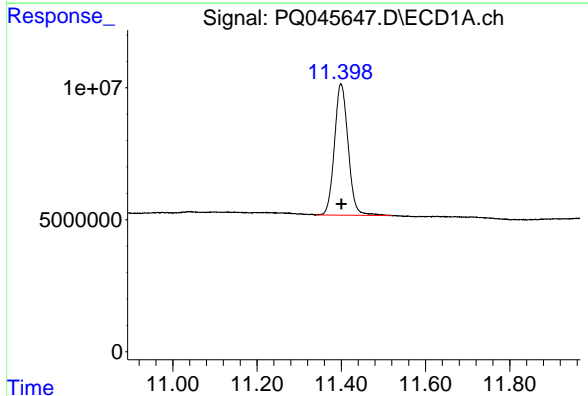


#1 Tetrachloro-m-xylene
R.T.: 5.233 min
Delta R.T.: -0.001 min
Response: 21467209
Conc: 5.46 ng/ml

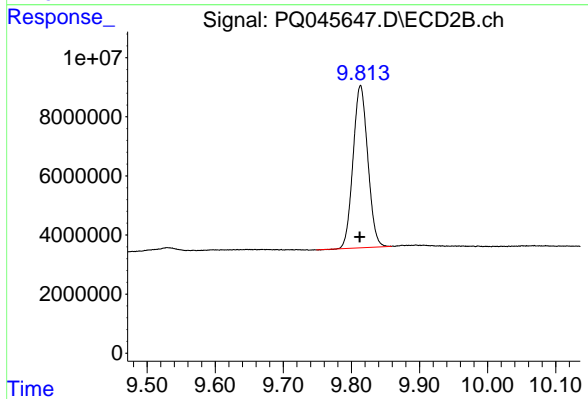
Instrument :
ECD_Q
ClientSampleId :
AR1242101



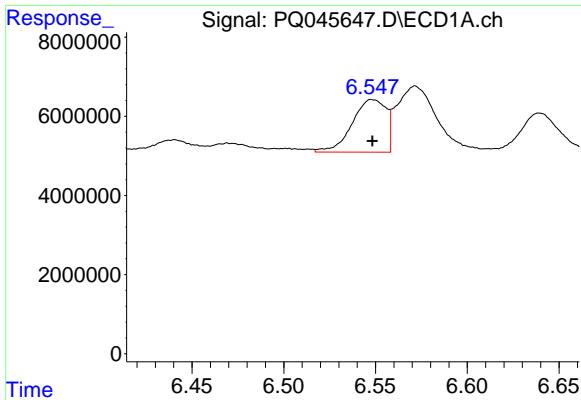
#1 Tetrachloro-m-xylene
R.T.: 4.362 min
Delta R.T.: 0.000 min
Response: 24271291
Conc: 5.32 ng/ml



#2 Decachlorobiphenyl
R.T.: 11.399 min
Delta R.T.: 0.000 min
Response: 112401694
Conc: 10.85 ng/ml



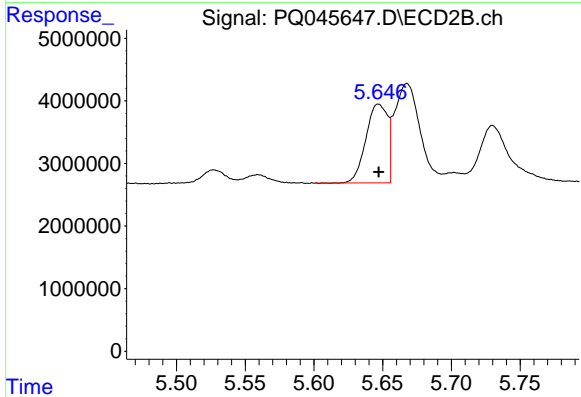
#2 Decachlorobiphenyl
R.T.: 9.813 min
Delta R.T.: 0.001 min
Response: 82535566
Conc: 10.22 ng/ml



#16 AR-1242-1

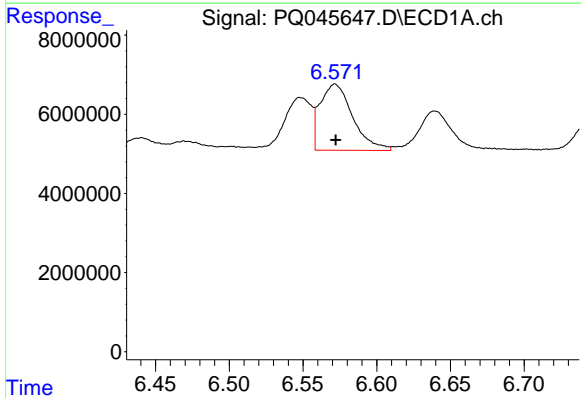
R.T.: 6.548 min
 Delta R.T.: 0.000 min
 Response: 17136784
 Conc: 124.35 ng/ml

Instrument :
 ECD_Q
 ClientSampled :
 AR1242101



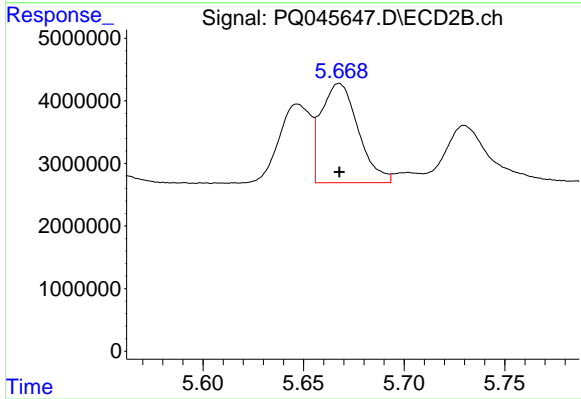
#16 AR-1242-1

R.T.: 5.647 min
 Delta R.T.: 0.000 min
 Response: 13860299
 Conc: 113.07 ng/ml



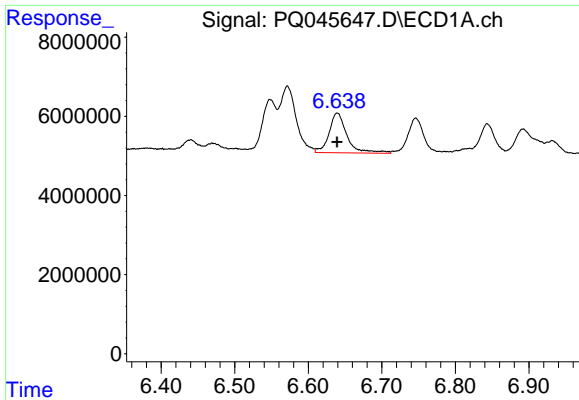
#17 AR-1242-2

R.T.: 6.572 min
 Delta R.T.: 0.000 min
 Response: 25706850
 Conc: 120.35 ng/ml



#17 AR-1242-2

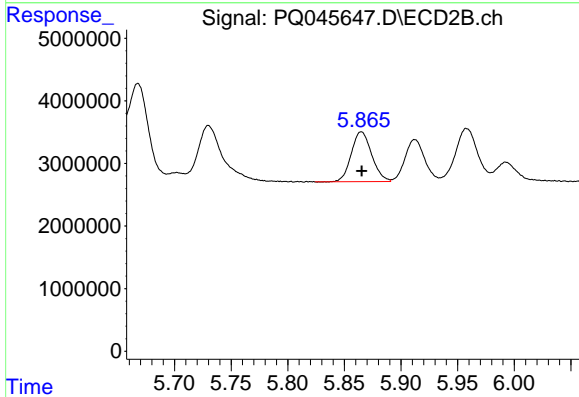
R.T.: 5.668 min
 Delta R.T.: 0.000 min
 Response: 20357489
 Conc: 109.24 ng/ml



#18 AR-1242-3

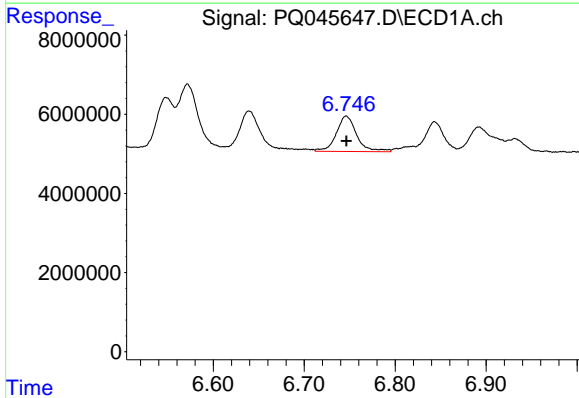
R.T.: 6.640 min
Delta R.T.: 0.000 min
Response: 17019836
Conc: 128.94 ng/ml

Instrument :
ECD_Q
ClientSampled :
AR1242101



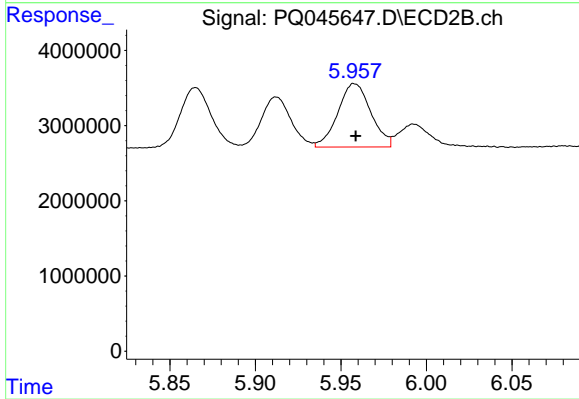
#18 AR-1242-3

R.T.: 5.865 min
Delta R.T.: 0.000 min
Response: 9999692
Conc: 105.56 ng/ml



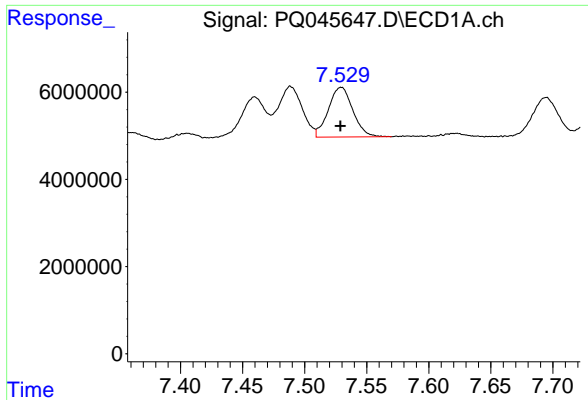
#19 AR-1242-4

R.T.: 6.746 min
Delta R.T.: 0.000 min
Response: 13953844
Conc: 128.48 ng/ml



#19 AR-1242-4

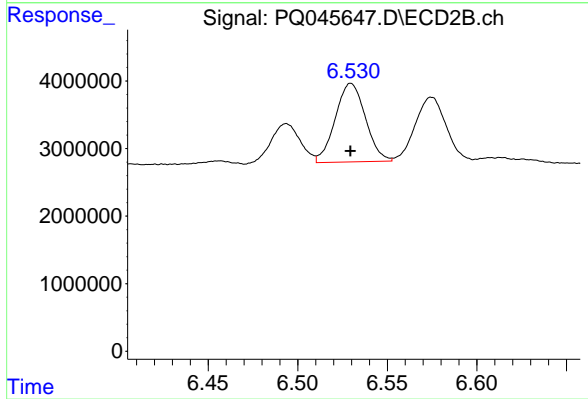
R.T.: 5.958 min
Delta R.T.: 0.000 min
Response: 11331533
Conc: 109.78 ng/ml



#20 AR-1242-5

R.T.: 7.529 min
Delta R.T.: 0.000 min
Response: 15660090
Conc: 112.77 ng/ml

Instrument :
ECD_Q
ClientSampleId :
AR1242101



#20 AR-1242-5

R.T.: 6.530 min
Delta R.T.: 0.000 min
Response: 13656526
Conc: 102.59 ng/ml