

Data Path : Z:\pestpcbsrv\HPCHEM1\ECD_Q\Data\PQ120519\
 Data File : PQ045648.D
 Signal(s) : Signal #1: ECD1A.ch Signal #2: ECD2B.ch
 Acq On : 05 Dec 2019 23:01
 Operator : SM\AJ
 Sample : AR1242ICC200
 Misc :
 ALS Vial : 19 Sample Multiplier: 1

Instrument :
 ECD_Q
 ClientSampleId :
 AR1242201

Integration File signal 1: autoint1.e
 Integration File signal 2: autoint2.e
 Quant Time: Dec 06 04:45:20 2019
 Quant Method : Z:\pestpcbsrv\HPCHEM1\ECD_Q\Method\PQ120519CLP.M
 Quant Title : GC EXTRACTABLES
 QLast Update : Fri Dec 06 04:44:32 2019
 Response via : Initial Calibration
 Integrator: ChemStation

Volume Inj. : 1 µl
 Signal #1 Phase : ZB MR1 Signal #2 Phase: ZB MR2
 Signal #1 Info : 30Mx0.32mmx 0.5µm Signal #2 Info : 30M x 0.32mm x 0.25µm

Compound	RT#1	RT#2	Resp#1	Resp#2	ng/ml	ng/ml

System Monitoring Compounds						
1) SA Tetrachlo...	5.233	4.363	42279623	41449018	10.752	9.083
2) SA Decachlor...	11.400	9.813	217.0E6	161.4E6	20.949	19.982
Target Compounds						
16) L4 AR-1242-1	6.549	5.647	30505023	26489473	221.359	216.090
17) L4 AR-1242-2	6.572	5.668	46530199	40175164	217.839	215.580
18) L4 AR-1242-3	6.640	5.866	28150104	20215854	213.255	213.408
19) L4 AR-1242-4	6.747	5.958	22993537	22336975	211.709	216.408
20) L4 AR-1242-5	7.530	6.530	30144947	26527926	217.084	199.277

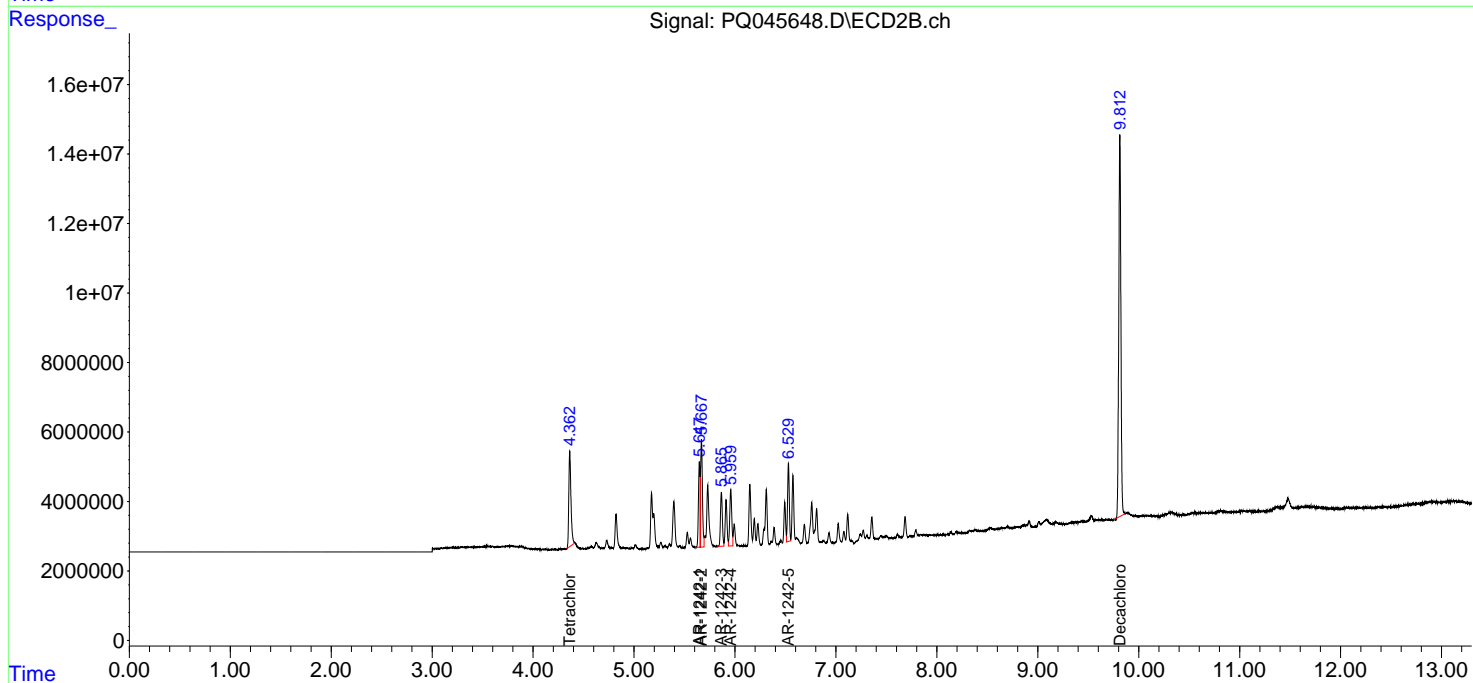
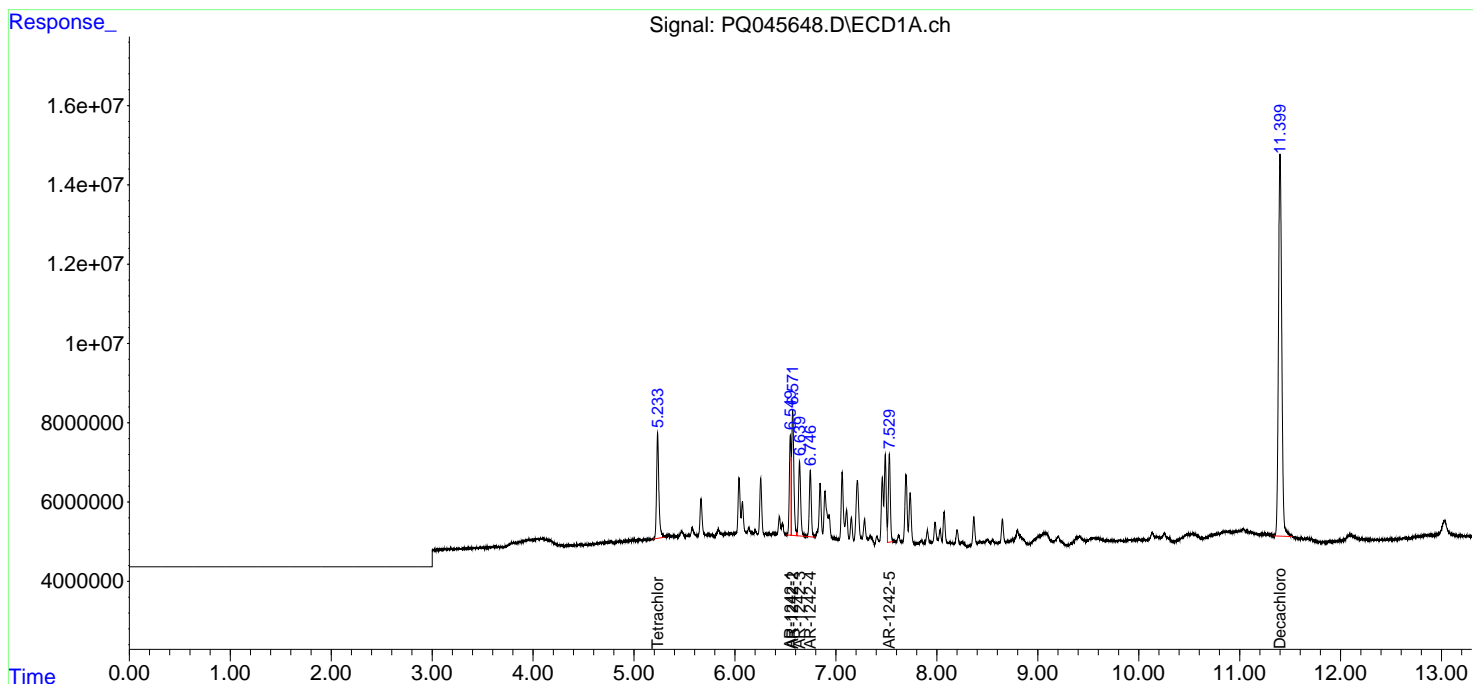
(f)=RT Delta > 1/2 Window (#)=Amounts differ by > 25% (m)=manual int.

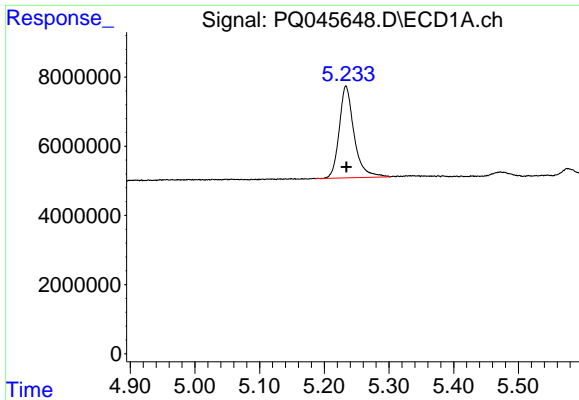
Data Path : Z:\pestpcbsrv\HPCHEM1\ECD_Q\Data\PQ120519\
 Data File : PQ045648.D
 Signal(s) : Signal #1: ECD1A.ch Signal #2: ECD2B.ch
 Acq On : 05 Dec 2019 23:01
 Operator : SM\AJ
 Sample : AR1242ICC200
 Misc :
 ALS Vial : 19 Sample Multiplier: 1

Instrument :
 ECD_Q
 ClientSampleID :
 AR1242201

Integration File signal 1: autoint1.e
 Integration File signal 2: autoint2.e
 Quant Time: Dec 06 04:45:20 2019
 Quant Method : Z:\pestpcbsrv\HPCHEM1\ECD_Q\Method\PQ120519CLP.M
 Quant Title : GC EXTRACTABLES
 QLast Update : Fri Dec 06 04:44:32 2019
 Response via : Initial Calibration
 Integrator: ChemStation

Volume Inj. : 1 µl
 Signal #1 Phase : ZB MR1 Signal #2 Phase: ZB MR2
 Signal #1 Info : 30Mx0.32mmx 0.5µm Signal #2 Info : 30M x 0.32mm x 0.25µm

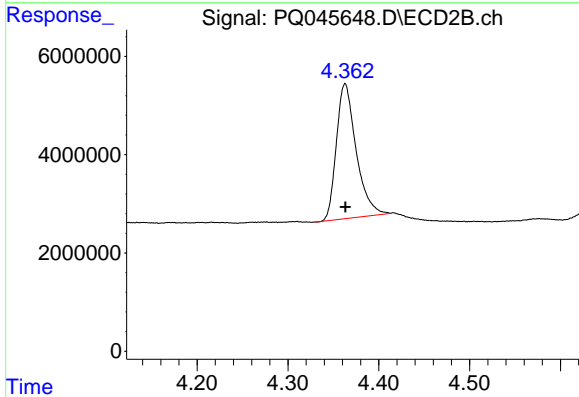




#1 Tetrachloro-m-xylene

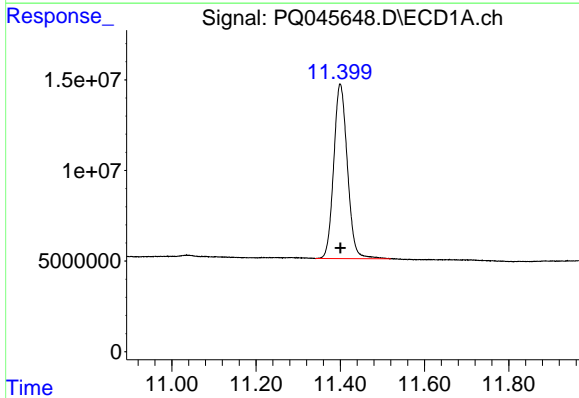
R.T.: 5.233 min
 Delta R.T.: 0.000 min
 Response: 42279623
 Conc: 10.75 ng/ml

Instrument :
 ECD_Q
 ClientSampleId :
 AR1242201



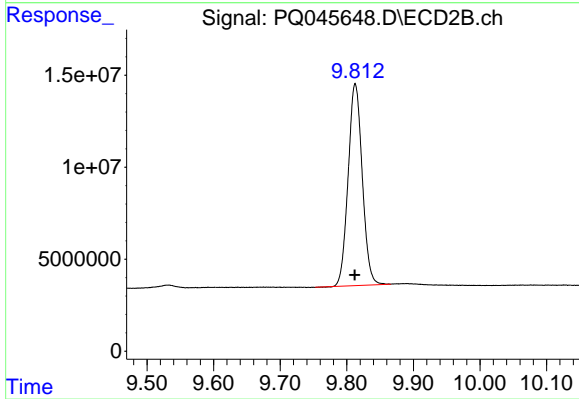
#1 Tetrachloro-m-xylene

R.T.: 4.363 min
 Delta R.T.: 0.000 min
 Response: 41449018
 Conc: 9.08 ng/ml



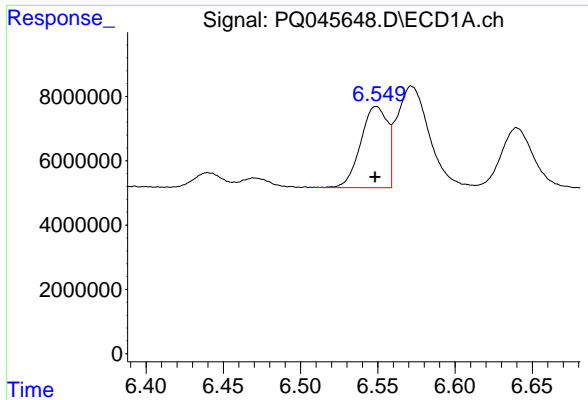
#2 Decachlorobiphenyl

R.T.: 11.400 min
 Delta R.T.: 0.000 min
 Response: 216959399
 Conc: 20.95 ng/ml



#2 Decachlorobiphenyl

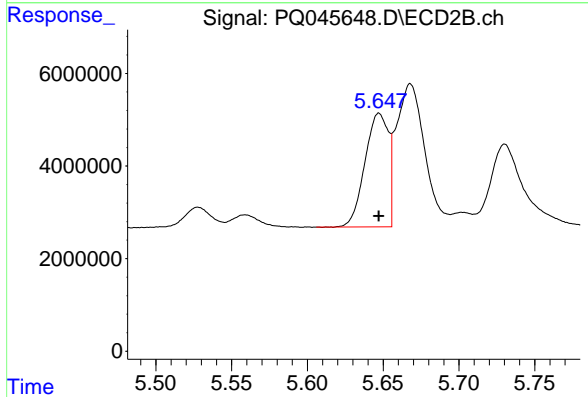
R.T.: 9.813 min
 Delta R.T.: 0.000 min
 Response: 161402804
 Conc: 19.98 ng/ml



#16 AR-1242-1

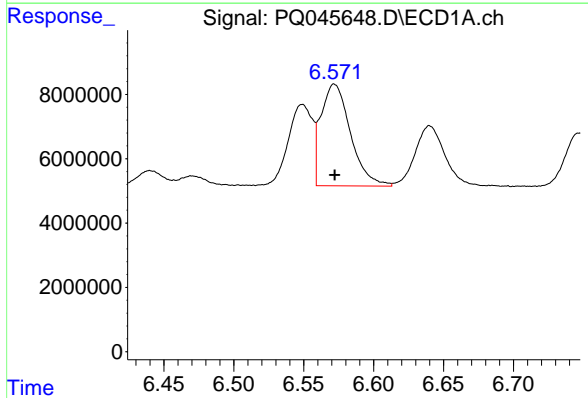
R.T.: 6.549 min
Delta R.T.: 0.000 min
Response: 30505023
Conc: 221.36 ng/ml

Instrument :
ECD_Q
ClientSampled :
AR1242201



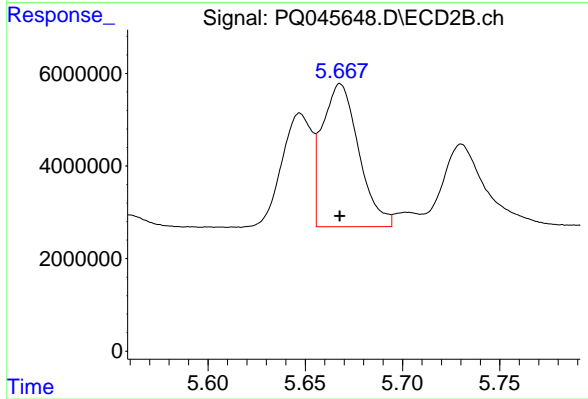
#16 AR-1242-1

R.T.: 5.647 min
Delta R.T.: 0.000 min
Response: 26489473
Conc: 216.09 ng/ml



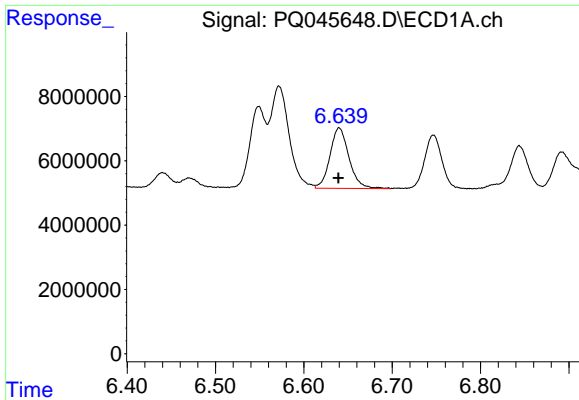
#17 AR-1242-2

R.T.: 6.572 min
Delta R.T.: 0.000 min
Response: 46530199
Conc: 217.84 ng/ml



#17 AR-1242-2

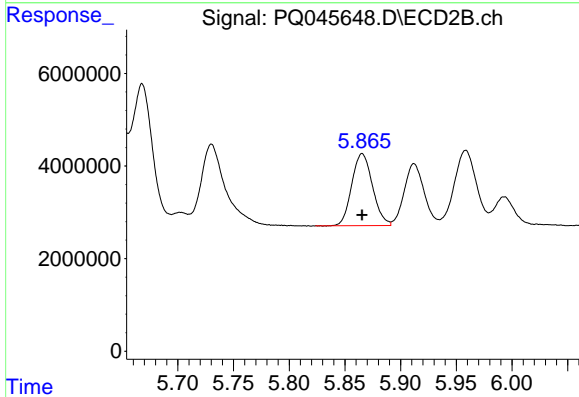
R.T.: 5.668 min
Delta R.T.: 0.000 min
Response: 40175164
Conc: 215.58 ng/ml



#18 AR-1242-3

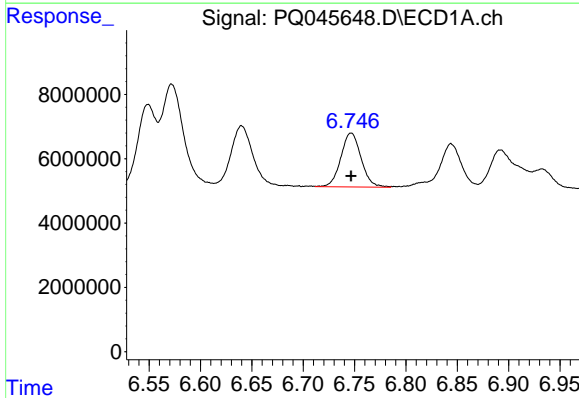
R.T.: 6.640 min
 Delta R.T.: 0.000 min
 Response: 28150104
 Conc: 213.25 ng/ml

Instrument :
 ECD_Q
 ClientSampleId :
 AR1242201



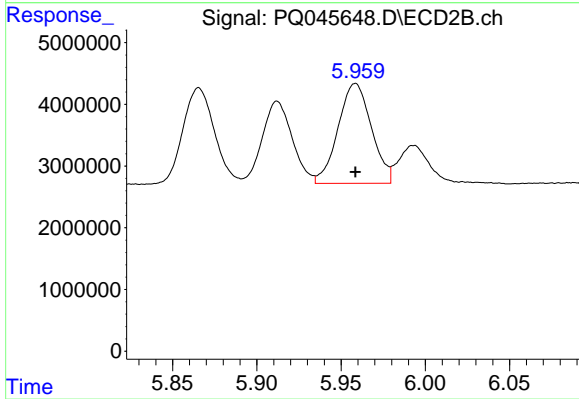
#18 AR-1242-3

R.T.: 5.866 min
 Delta R.T.: 0.000 min
 Response: 20215854
 Conc: 213.41 ng/ml



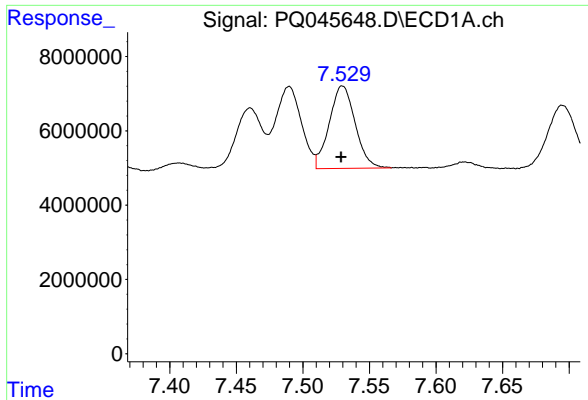
#19 AR-1242-4

R.T.: 6.747 min
 Delta R.T.: 0.000 min
 Response: 22993537
 Conc: 211.71 ng/ml



#19 AR-1242-4

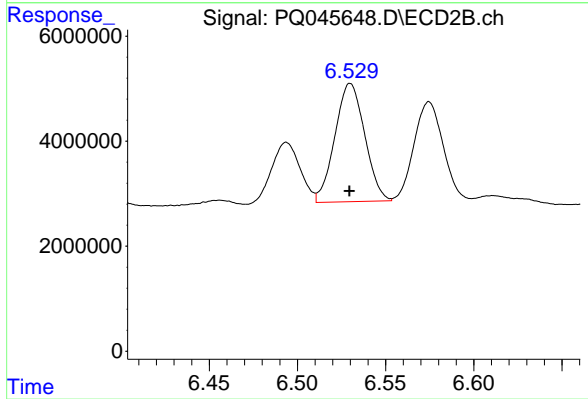
R.T.: 5.958 min
 Delta R.T.: 0.000 min
 Response: 22336975
 Conc: 216.41 ng/ml



#20 AR-1242-5

R.T.: 7.530 min
Delta R.T.: 0.001 min
Response: 30144947
Conc: 217.08 ng/ml

Instrument :
ECD_Q
ClientSampleId :
AR1242201



#20 AR-1242-5

R.T.: 6.530 min
Delta R.T.: 0.000 min
Response: 26527926
Conc: 199.28 ng/ml