

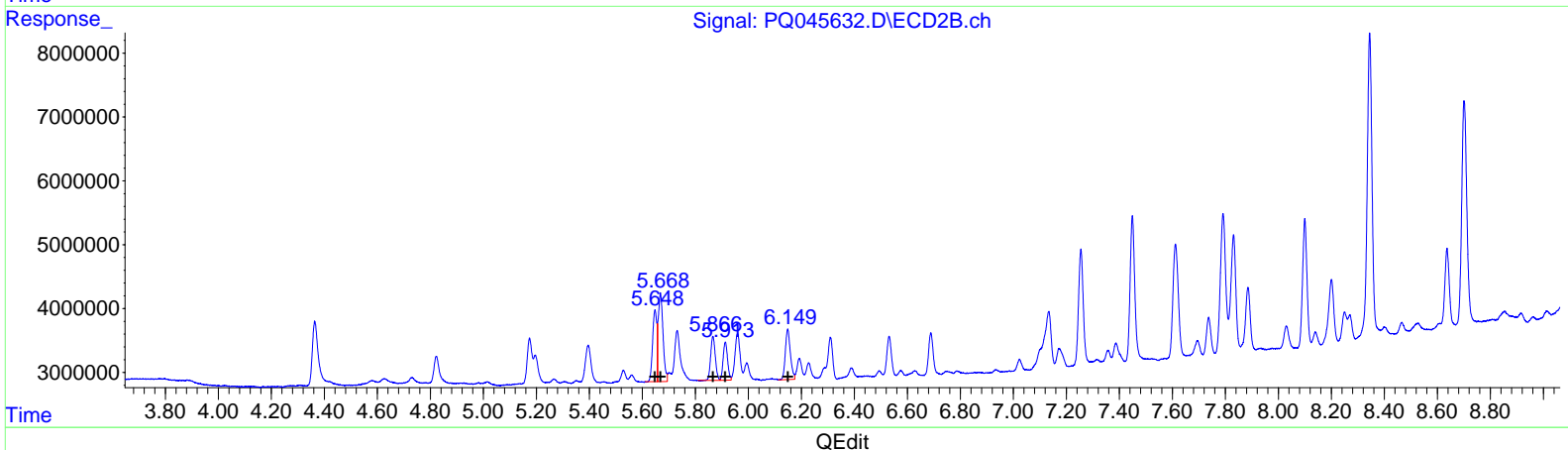
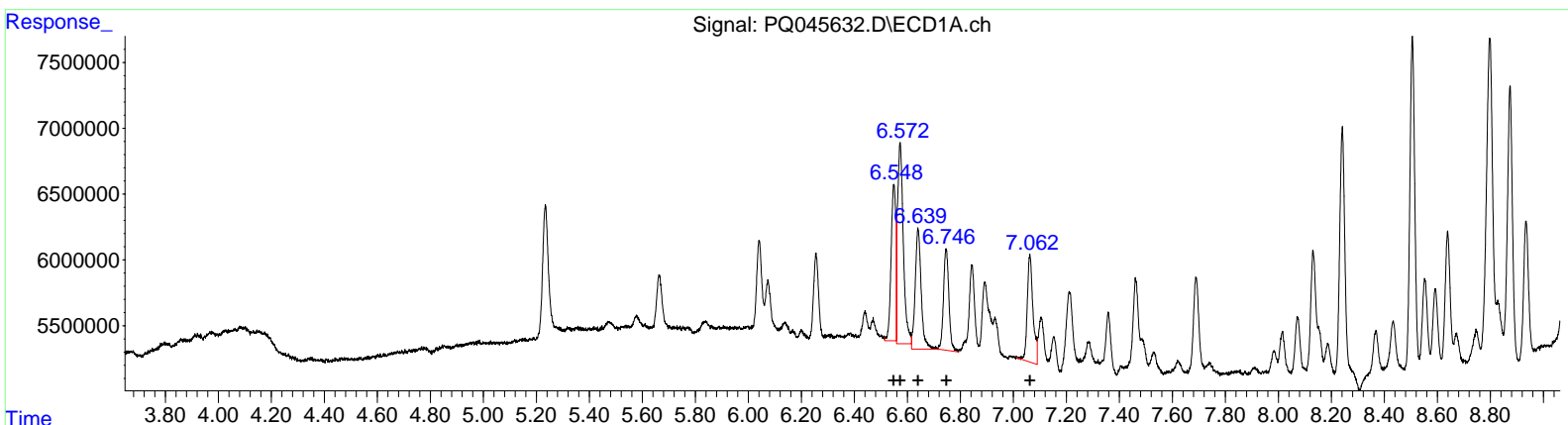
Data Path : Z:\pestpcbsrv\HPCHEM1\ECD_Q\Data\PQ120519\
 Data File : PQ045632.D
 Signal(s) : Signal #1: ECD1A.ch Signal #2: ECD2B.ch
 Acq On : 05 Dec 2019 18:41
 Operator : SM\AJ
 Sample : AR1660ICC100
 Misc :
 ALS Vial : 3 Sample Multiplier: 1

Instrument :
 ECD_Q
LabSampleId :
 AR1660101

Manual Integrations
APPROVED
 mohammad
 12/6/2019 2:39:56 PM

Integration File signal 1: autoint1.e
 Integration File signal 2: autoint2.e
 Quant Time: Dec 06 03:33:56 2019
 Quant Method : Z:\pestpcbsrv\HPCHEM1\ECD_Q\Method\PQ120519CLP.M
 Quant Title : GC EXTRACTABLES
 QLast Update : Fri Dec 06 03:33:35 2019
 Response via : Initial Calibration
 Integrator: ChemStation

Volume Inj. : 1 µl
 Signal #1 Phase : ZB MR1 Signal #2 Phase: ZB MR2
 Signal #1 Info : 30Mx0.32mmx 0.5µm Signal #2 Info : 30M x 0.32mm x 0.25µm



QEdit

(3) AR-1016-1 (L1)		
R.T.	Response	Conc
6.55	14439028	110.45
6.57	23057136	112.23
6.64	13246630	106.73
6.75	10958464	107.19
7.06	12269141	115.21

(3) AR-1016-1 #2 (L1)		
R.T.	Response	Conc
5.65	12446736	111.59
5.67	17447212	102.80
5.87	8491817	100.20
5.91	6952524	94.75
6.15	10366984	106.78

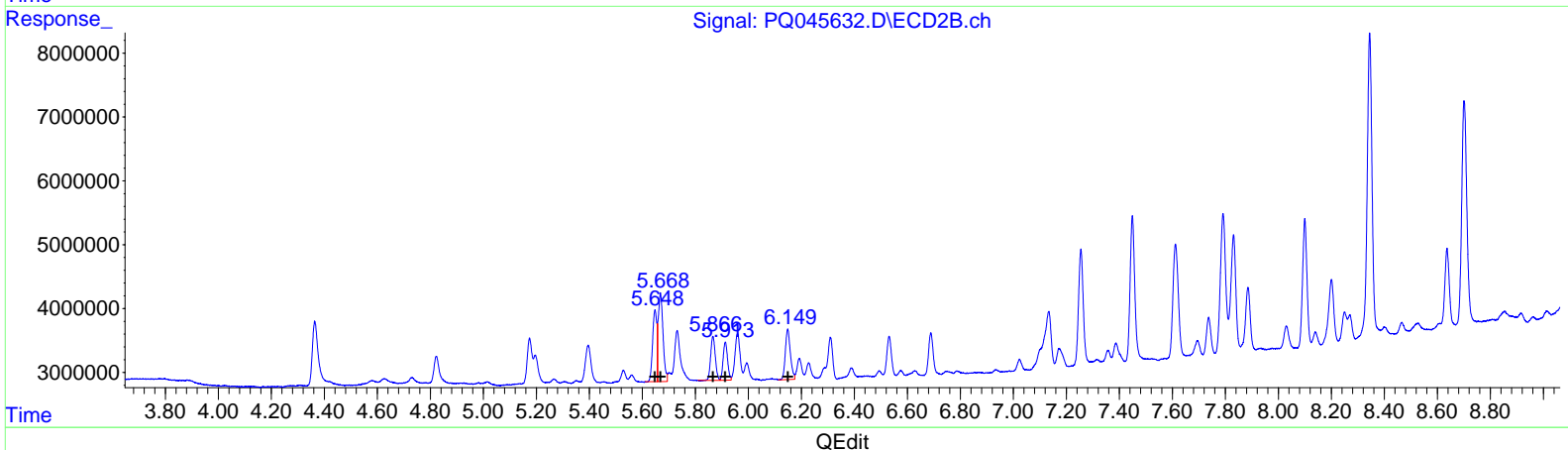
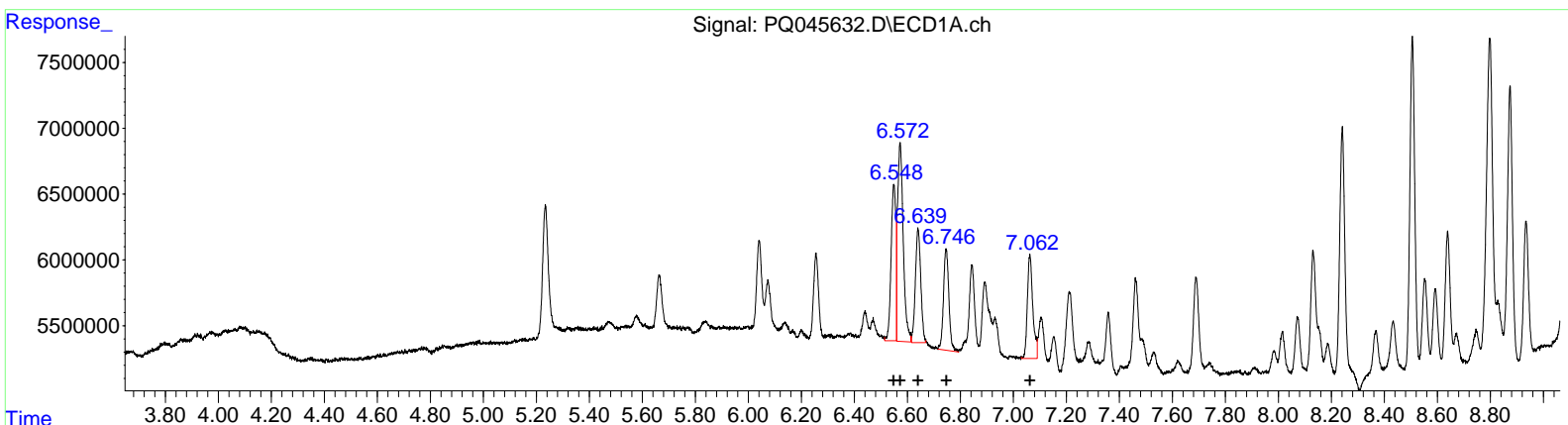
Data Path : Z:\pestpcbsrv\HPCHEM1\ECD_Q\Data\PQ120519\
 Data File : PQ045632.D
 Signal(s) : Signal #1: ECD1A.ch Signal #2: ECD2B.ch
 Acq On : 05 Dec 2019 18:41
 Operator : SM\AJ
 Sample : AR1660ICC100
 Misc :
 ALS Vial : 3 Sample Multiplier: 1

Instrument :
 ECD_Q
LabSampleId :
 AR1660101

Manual Integrations
APPROVED
 mohammad
 12/6/2019 2:39:56 PM

Integration File signal 1: autoint1.e
 Integration File signal 2: autoint2.e
 Quant Time: Dec 06 03:33:56 2019
 Quant Method : Z:\pestpcbsrv\HPCHEM1\ECD_Q\Method\PQ120519CLP.M
 Quant Title : GC EXTRACTABLES
 QLast Update : Fri Dec 06 03:33:35 2019
 Response via : Initial Calibration
 Integrator: ChemStation

Volume Inj. : 1 µl
 Signal #1 Phase : ZB MR1 Signal #2 Phase: ZB MR2
 Signal #1 Info : 30Mx0.32mmx 0.5µm Signal #2 Info : 30M x 0.32mm x 0.25µm



QEdit

(3) AR-1016-1 #2 (L1)	R.T.	Response	Conc
	6.55	14439028	110.45
	6.57	22362433	108.84
	6.64	12264008	98.81
	6.75	10958464	107.19
	7.06	11303287	106.14

(3) AR-1016-1 #2 (L1)	R.T.	Response	Conc
	5.65	12446736	111.59
	5.67	17447212	102.80
	5.87	8491817	100.20
	5.91	6952524	94.75
	6.15	10366984	106.78

Data Path : Z:\pestpcbsrv\HPCHEM1\ECD_Q\Data\PQ120519\
 Data File : PQ045632.D
 Signal(s) : Signal #1: ECD1A.ch Signal #2: ECD2B.ch
 Acq On : 05 Dec 2019 18:41
 Operator : SM\AJ
 Sample : AR1660ICC100
 Misc :
 ALS Vial : 3 Sample Multiplier: 1

Instrument :
 ECD_Q
LabSampleId :
 AR1660101

Manual Integrations
APPROVED

mohammad
 12/6/2019 2:39:56 PM

Integration File signal 1: autoint1.e
 Integration File signal 2: autoint2.e
 Quant Time: Dec 06 03:33:56 2019
 Quant Method : Z:\pestpcbsrv\HPCHEM1\ECD_Q\Method\PQ120519CLP.M
 Quant Title : GC EXTRACTABLES
 QLast Update : Fri Dec 06 03:33:35 2019
 Response via : Initial Calibration
 Integrator: ChemStation

Volume Inj. : 1 µl
 Signal #1 Phase : ZB MR1 Signal #2 Phase: ZB MR2
 Signal #1 Info : 30Mx0.32mmx 0.5µm Signal #2 Info : 30M x 0.32mm x 0.25µm

Compound	RT#1	RT#2	Resp#1	Resp#2	ng/ml	ng/ml

System Monitoring Compounds						
1) SA Tetrachlo...	5.234	4.364	15685601	16512755	5.223	4.966
2) SA Decachlor...	11.404	9.816	91928396	65795449	10.399	10.207
Target Compounds						
3) L1 AR-1016-1	6.549	5.648	14439028	12446736	110.451	111.585
4) L1 AR-1016-2	6.572	5.668	22362433	17447212	108.845m	102.803
5) L1 AR-1016-3	6.639	5.866	12264008	8491817	98.815m	100.197
6) L1 AR-1016-4	6.746	5.913	10958464	6952524	107.194	94.746
7) L1 AR-1016-5	7.062	6.149	11303287	10366984	106.144m	106.780
31) L7 AR-1260-1	8.241	7.255	26045800	22079798	111.435	104.824
32) L7 AR-1260-2	8.506	7.449	33333051	28089043	108.917	108.204
33) L7 AR-1260-3	8.874	7.612	30150101	25381047	110.928	103.108
34) L7 AR-1260-4	9.114	8.100	36985897	23295050	117.173	98.656
35) L7 AR-1260-5	9.456	8.345	68147078	61384185	101.501	99.785

Handwritten signature: AJ
 Date: 12/10/19

(f)=RT Delta > 1/2 Window (#)=Amounts differ by > 25% (m)=manual int.