

Data Path : Z:\pestpcbsrv\HPCHEM1\ECD_Q\Data\PQ120524\
 Data File : PQ069586.D
 Signal(s) : Signal #1: ECD1A.ch Signal #2: ECD2B.ch
 Acq On : 05 Dec 2024 12:18
 Operator : YP\AJ
 Sample : AR1660ICC500
 Misc :
 ALS Vial : 5 Sample Multiplier: 1

Instrument :
 ECD_Q
 ClientSampleId :
 AR1660ICC500

Integration File signal 1: autoint1.e
 Integration File signal 2: autoint2.e
 Quant Time: Dec 05 21:32:13 2024
 Quant Method : Z:\pestpcbsrv\HPCHEM1\ECD_Q\Method\PQ120524.M
 Quant Title : GC EXTRACTABLES
 QLast Update : Thu Dec 05 21:29:07 2024
 Response via : Initial Calibration
 Integrator: ChemStation

Volume Inj. : 2 µl
 Signal #1 Phase : ZB-MR1 Signal #2 Phase: ZB-MR2
 Signal #1 Info : 30Mx0.32mmx 0.50µ Signal #2 Info : 30M x 0.32mm x 0.25µm

Compound	RT#1	RT#2	Resp#1	Resp#2	ng/ml	ng/ml

System Monitoring Compounds						
1) SA Tetrachlo...	3.416	2.790	237.6E6	323.3E6	50.000	50.000
2) SA Decachlor...	8.533	7.572	151.3E6	319.3E6	50.000	50.000
Target Compounds						
3) L1 AR-1016-1	4.501	3.796	71857984	107.9E6	500.000	500.000
4) L1 AR-1016-2	4.520	3.812	115.7E6	163.6E6	500.000	500.000
5) L1 AR-1016-3	4.578	3.972	71143778	91236615	500.000	500.000
6) L1 AR-1016-4	4.668	4.021	57140830	77862996	500.000	500.000
7) L1 AR-1016-5	4.953	4.217	56209623	95696505	500.000	500.000
31) L7 AR-1260-1	6.045	5.214	97504545	170.1E6	500.000	500.000
32) L7 AR-1260-2	6.301	5.404	115.6E6	207.1E6	500.000	500.000
33) L7 AR-1260-3	6.653	5.546	85152588	197.7E6	500.000	500.000
34) L7 AR-1260-4	6.867	6.009	93808450	167.8E6	500.000	500.000
35) L7 AR-1260-5	7.174	6.252	184.5E6	396.5E6	500.000	500.000

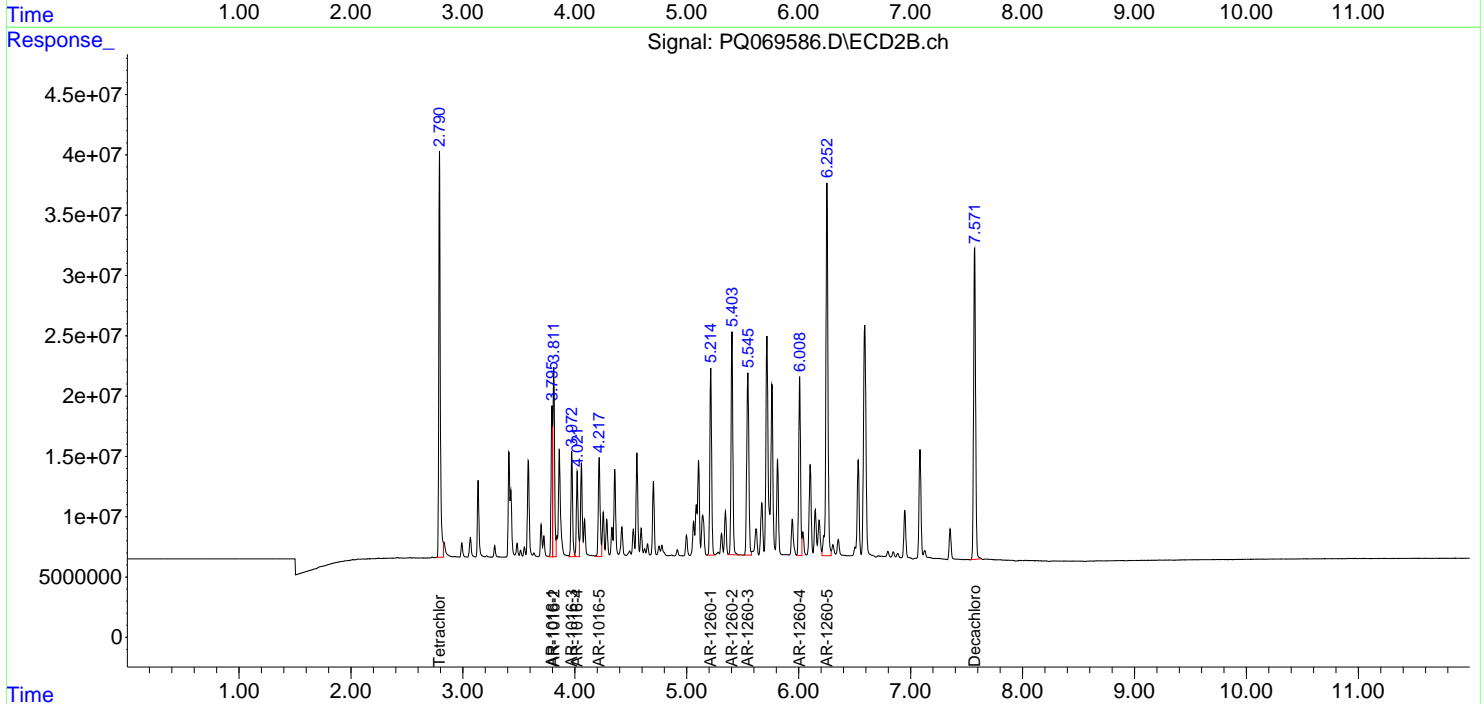
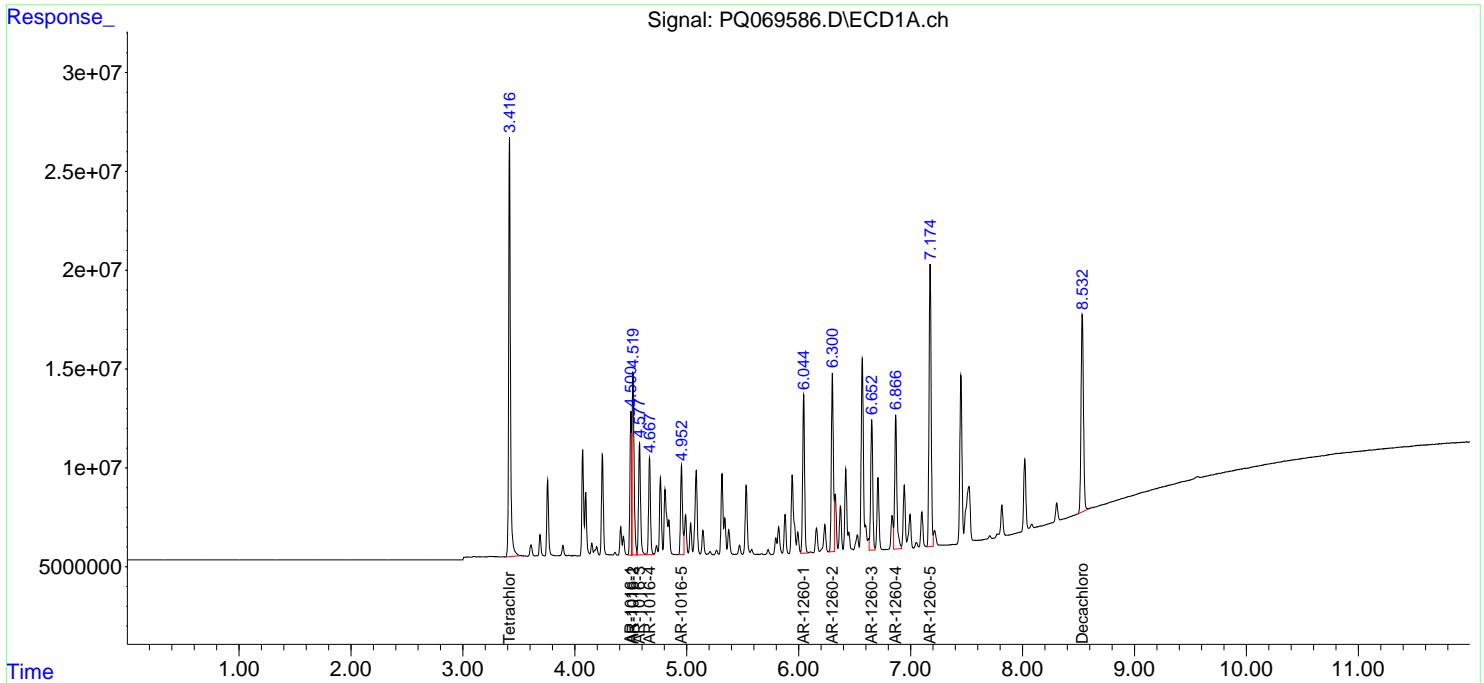
(f)=RT Delta > 1/2 Window (#)=Amounts differ by > 25% (m)=manual int.

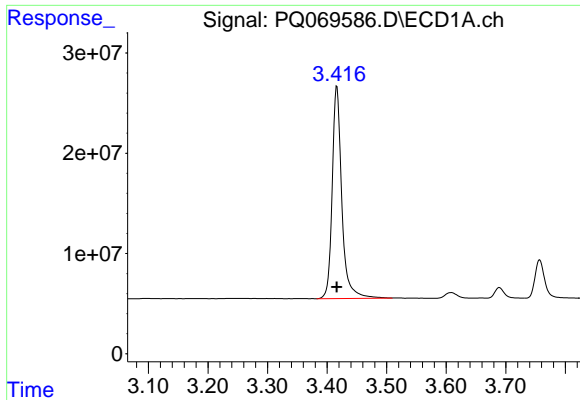
Data Path : Z:\pestpcbsrv\HPCHEM1\ECD_Q\Data\PQ120524\
 Data File : PQ069586.D
 Signal(s) : Signal #1: ECD1A.ch Signal #2: ECD2B.ch
 Acq On : 05 Dec 2024 12:18
 Operator : YP\AJ
 Sample : AR1660ICC500
 Misc :
 ALS Vial : 5 Sample Multiplier: 1

Instrument :
 ECD_Q
 ClientSampleId :
 AR1660ICC500

Integration File signal 1: autoint1.e
 Integration File signal 2: autoint2.e
 Quant Time: Dec 05 21:32:13 2024
 Quant Method : Z:\pestpcbsrv\HPCHEM1\ECD_Q\Method\PQ120524.M
 Quant Title : GC EXTRACTABLES
 QLast Update : Thu Dec 05 21:29:07 2024
 Response via : Initial Calibration
 Integrator: ChemStation

Volume Inj. : 2 µl
 Signal #1 Phase : ZB-MR1 Signal #2 Phase: ZB-MR2
 Signal #1 Info : 30Mx0.32mmx 0.50µ Signal #2 Info : 30M x 0.32mm x 0.25µm

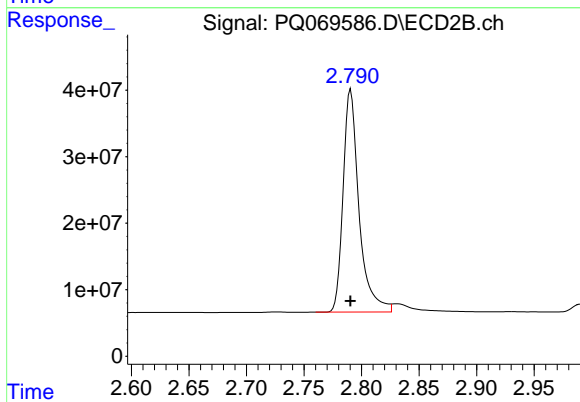




#1 Tetrachloro-m-xylene

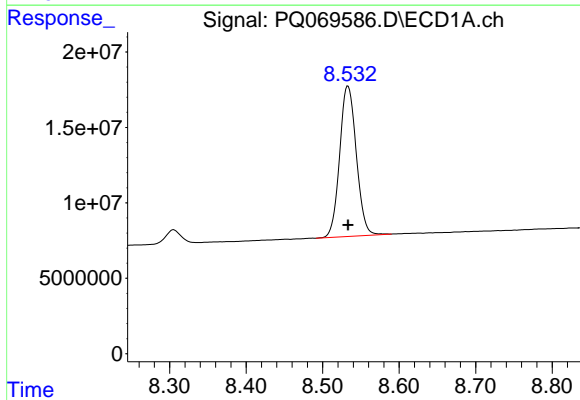
R.T.: 3.416 min
 Delta R.T.: 0.000 min
 Response: 237584506
 Conc: 50.00 ng/ml

Instrument :
 ECD_Q
 ClientSampleId :
 AR1660ICC500



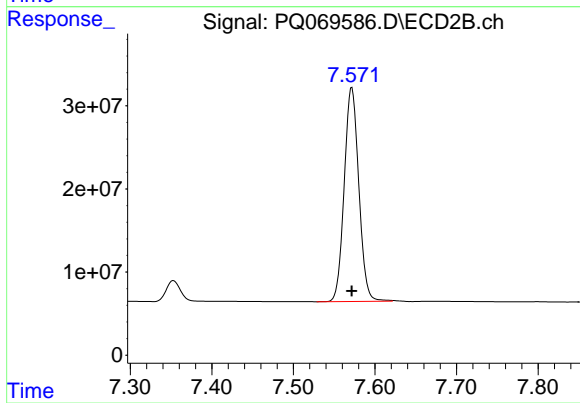
#1 Tetrachloro-m-xylene

R.T.: 2.790 min
 Delta R.T.: 0.000 min
 Response: 323342014
 Conc: 50.00 ng/ml



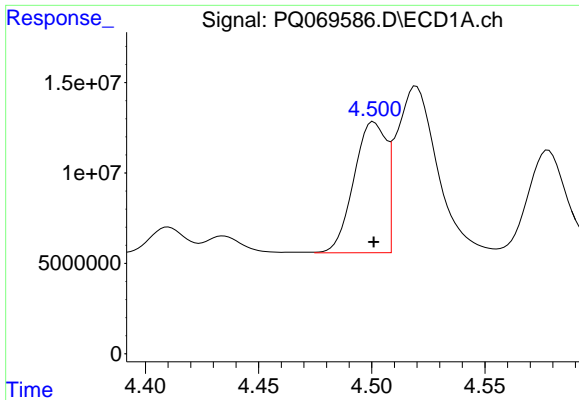
#2 Decachlorobiphenyl

R.T.: 8.533 min
 Delta R.T.: 0.000 min
 Response: 151260962
 Conc: 50.00 ng/ml



#2 Decachlorobiphenyl

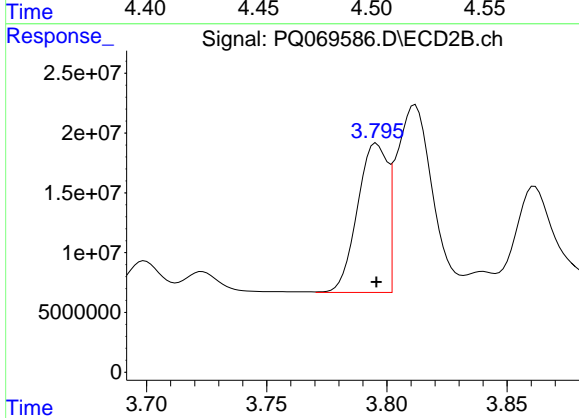
R.T.: 7.572 min
 Delta R.T.: 0.000 min
 Response: 319335244
 Conc: 50.00 ng/ml



#3 AR-1016-1

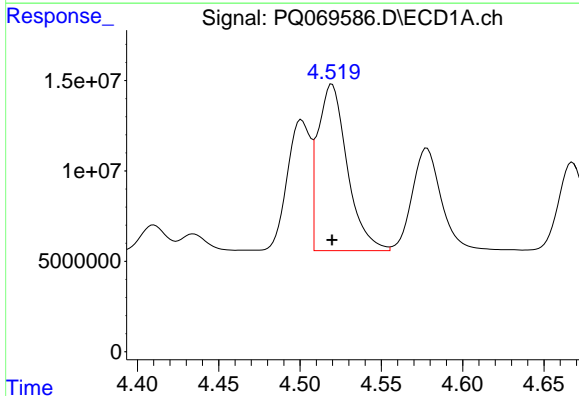
R.T.: 4.501 min
 Delta R.T.: 0.000 min
 Response: 71857984
 Conc: 500.00 ng/ml

Instrument :
 ECD_Q
 ClientSampleId :
 AR1660ICC500



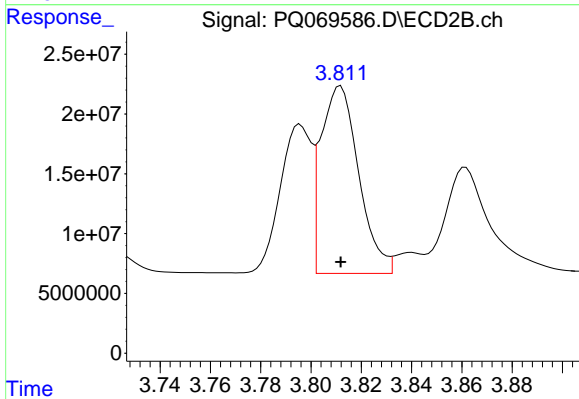
#3 AR-1016-1

R.T.: 3.796 min
 Delta R.T.: 0.000 min
 Response: 107902021
 Conc: 500.00 ng/ml



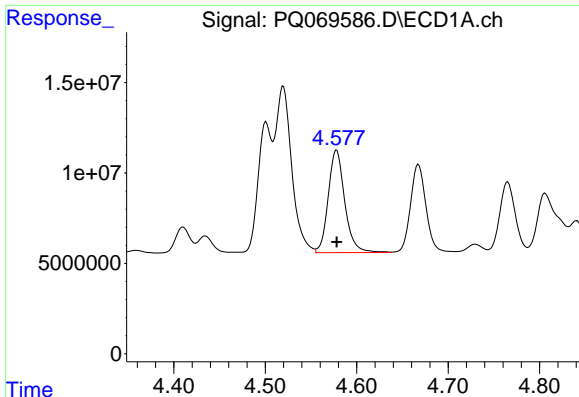
#4 AR-1016-2

R.T.: 4.520 min
 Delta R.T.: 0.000 min
 Response: 115682915
 Conc: 500.00 ng/ml



#4 AR-1016-2

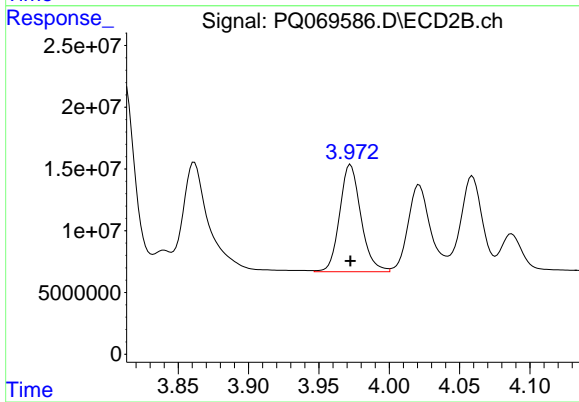
R.T.: 3.812 min
 Delta R.T.: 0.000 min
 Response: 163597120
 Conc: 500.00 ng/ml



#5 AR-1016-3

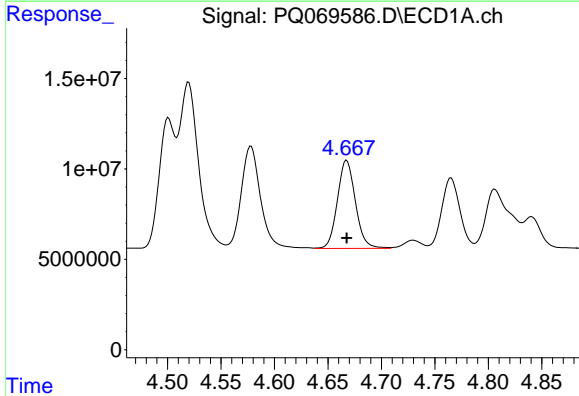
R.T.: 4.578 min
 Delta R.T.: 0.000 min
 Response: 71143778
 Conc: 500.00 ng/ml

Instrument :
 ECD_Q
 ClientSampleId :
 AR1660ICC500



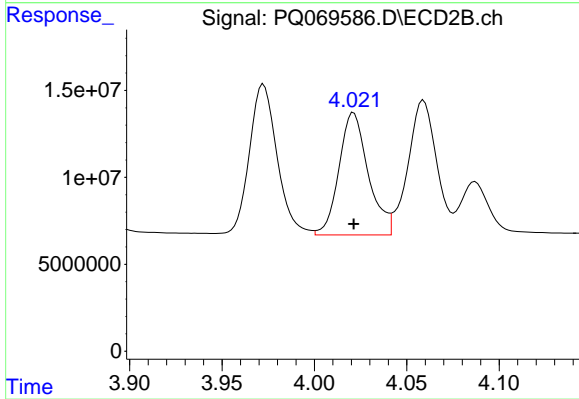
#5 AR-1016-3

R.T.: 3.972 min
 Delta R.T.: 0.000 min
 Response: 91236615
 Conc: 500.00 ng/ml



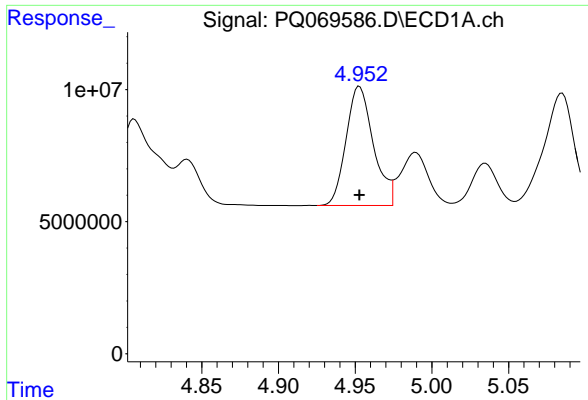
#6 AR-1016-4

R.T.: 4.668 min
 Delta R.T.: 0.000 min
 Response: 57140830
 Conc: 500.00 ng/ml



#6 AR-1016-4

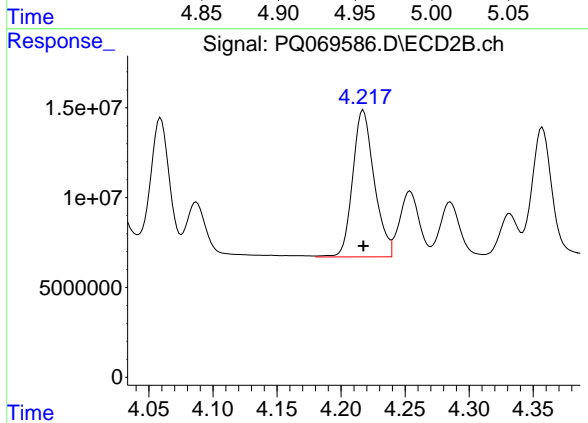
R.T.: 4.021 min
 Delta R.T.: 0.000 min
 Response: 77862996
 Conc: 500.00 ng/ml



#7 AR-1016-5

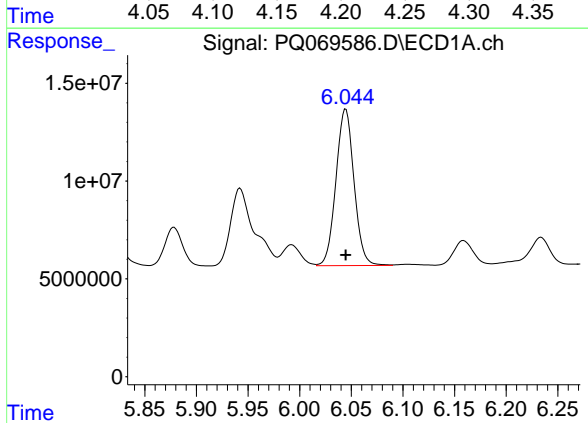
R.T.: 4.953 min
 Delta R.T.: 0.000 min
 Response: 56209623
 Conc: 500.00 ng/ml

Instrument :
 ECD_Q
 ClientSampleId :
 AR1660ICC500



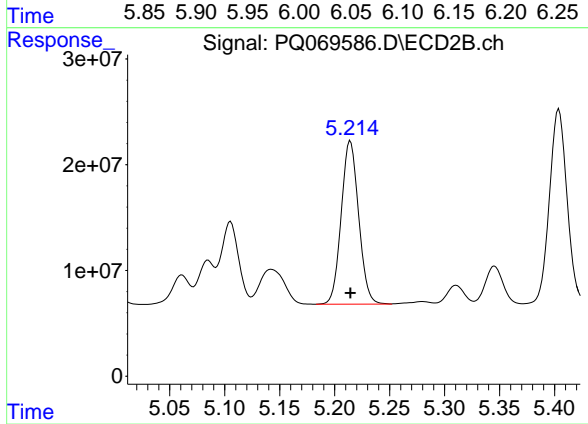
#7 AR-1016-5

R.T.: 4.217 min
 Delta R.T.: 0.000 min
 Response: 95696505
 Conc: 500.00 ng/ml



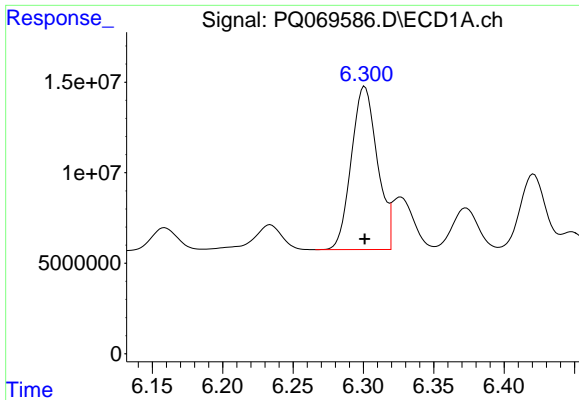
#31 AR-1260-1

R.T.: 6.045 min
 Delta R.T.: 0.000 min
 Response: 97504545
 Conc: 500.00 ng/ml



#31 AR-1260-1

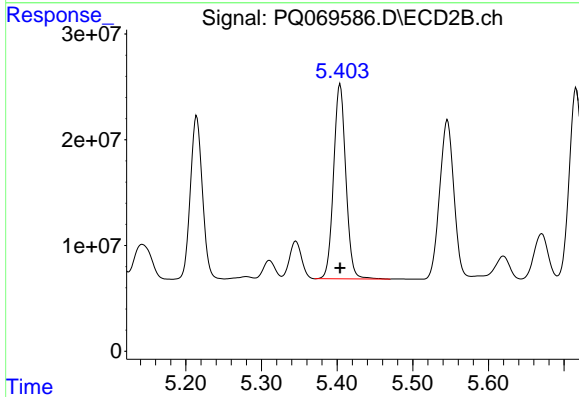
R.T.: 5.214 min
 Delta R.T.: 0.000 min
 Response: 170136844
 Conc: 500.00 ng/ml



#32 AR-1260-2

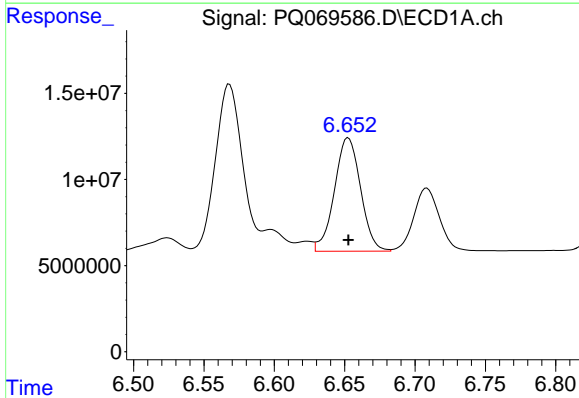
R.T.: 6.301 min
 Delta R.T.: 0.000 min
 Response: 115632776
 Conc: 500.00 ng/ml

Instrument :
 ECD_Q
 ClientSampleId :
 AR1660ICC500



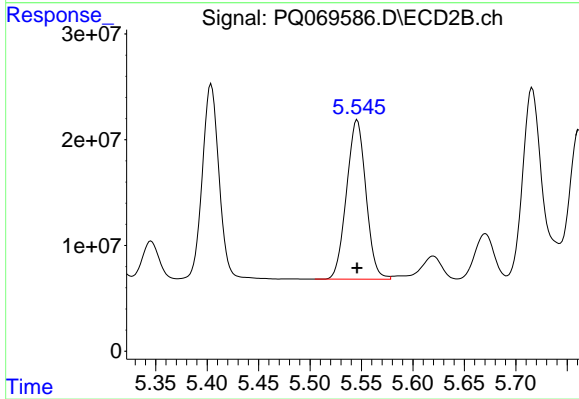
#32 AR-1260-2

R.T.: 5.404 min
 Delta R.T.: 0.000 min
 Response: 207134203
 Conc: 500.00 ng/ml



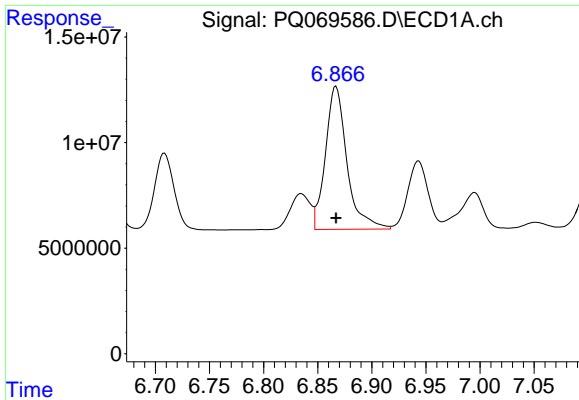
#33 AR-1260-3

R.T.: 6.653 min
 Delta R.T.: 0.000 min
 Response: 85152588
 Conc: 500.00 ng/ml



#33 AR-1260-3

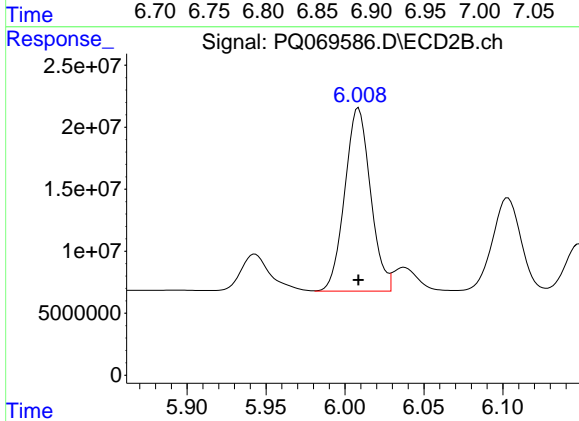
R.T.: 5.546 min
 Delta R.T.: 0.000 min
 Response: 197701636
 Conc: 500.00 ng/ml



#34 AR-1260-4

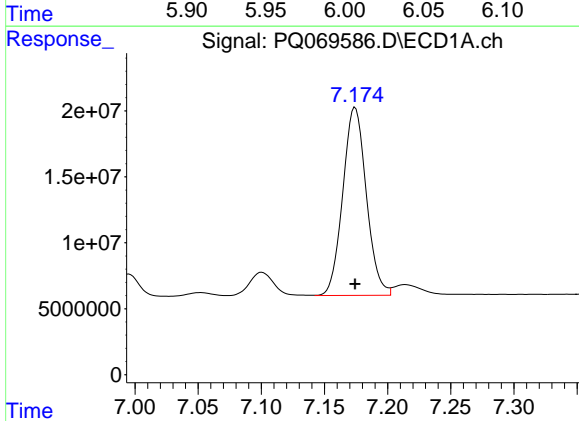
R.T.: 6.867 min
 Delta R.T.: 0.000 min
 Response: 93808450
 Conc: 500.00 ng/ml

Instrument :
 ECD_Q
 ClientSampleId :
 AR1660ICC500



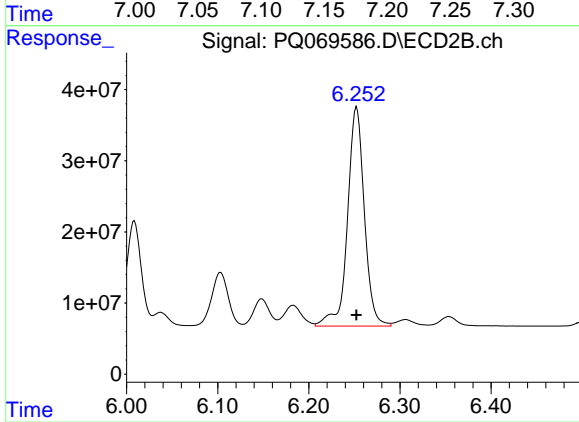
#34 AR-1260-4

R.T.: 6.009 min
 Delta R.T.: 0.000 min
 Response: 167786092
 Conc: 500.00 ng/ml



#35 AR-1260-5

R.T.: 7.174 min
 Delta R.T.: 0.000 min
 Response: 184539994
 Conc: 500.00 ng/ml



#35 AR-1260-5

R.T.: 6.252 min
 Delta R.T.: 0.000 min
 Response: 396479043
 Conc: 500.00 ng/ml