

Data Path : Z:\pestpcbsrv\HPCHEM1\ECD_Q\Data\PQ120524\
 Data File : PQ069605.D
 Signal(s) : Signal #1: ECD1A.ch Signal #2: ECD2B.ch
 Acq On : 05 Dec 2024 17:12
 Operator : YP\AJ
 Sample : AR1254ICC050
 Misc :
 ALS Vial : 24 Sample Multiplier: 1

Instrument :
 ECD_Q
 ClientSampleId :
 AR1254ICC050

Integration File signal 1: autoint1.e
 Integration File signal 2: autoint2.e
 Quant Time: Dec 05 22:31:11 2024
 Quant Method : Z:\pestpcbsrv\HPCHEM1\ECD_Q\Method\PQ120524.M
 Quant Title : GC EXTRACTABLES
 QLast Update : Thu Dec 05 22:28:47 2024
 Response via : Initial Calibration
 Integrator: ChemStation

Volume Inj. : 2 µl
 Signal #1 Phase : ZB-MR1 Signal #2 Phase: ZB-MR2
 Signal #1 Info : 30Mx0.32mmx 0.50µ Signal #2 Info : 30M x 0.32mm x 0.25µm

Compound	RT#1	RT#2	Resp#1	Resp#2	ng/ml	ng/ml

System Monitoring Compounds						
1) SA Tetrachlo...	3.415	2.790	22724156	33971940	4.729	5.002
2) SA Decachlor...	8.533	7.571	13849969	34273289	4.457	5.090
Target Compounds						
26) L6 AR-1254-1	5.314	4.554	8777987	20572552	50.323	55.259
27) L6 AR-1254-2	5.528	4.701	13579794	18488855	50.452	56.634
28) L6 AR-1254-3	5.877	5.083	13287488	28084249	47.895	53.431
29) L6 AR-1254-4	6.158	5.309	9058462	17004074	49.664	52.921
30) L6 AR-1254-5	6.569	5.716	10082784	25296182	47.467	52.058

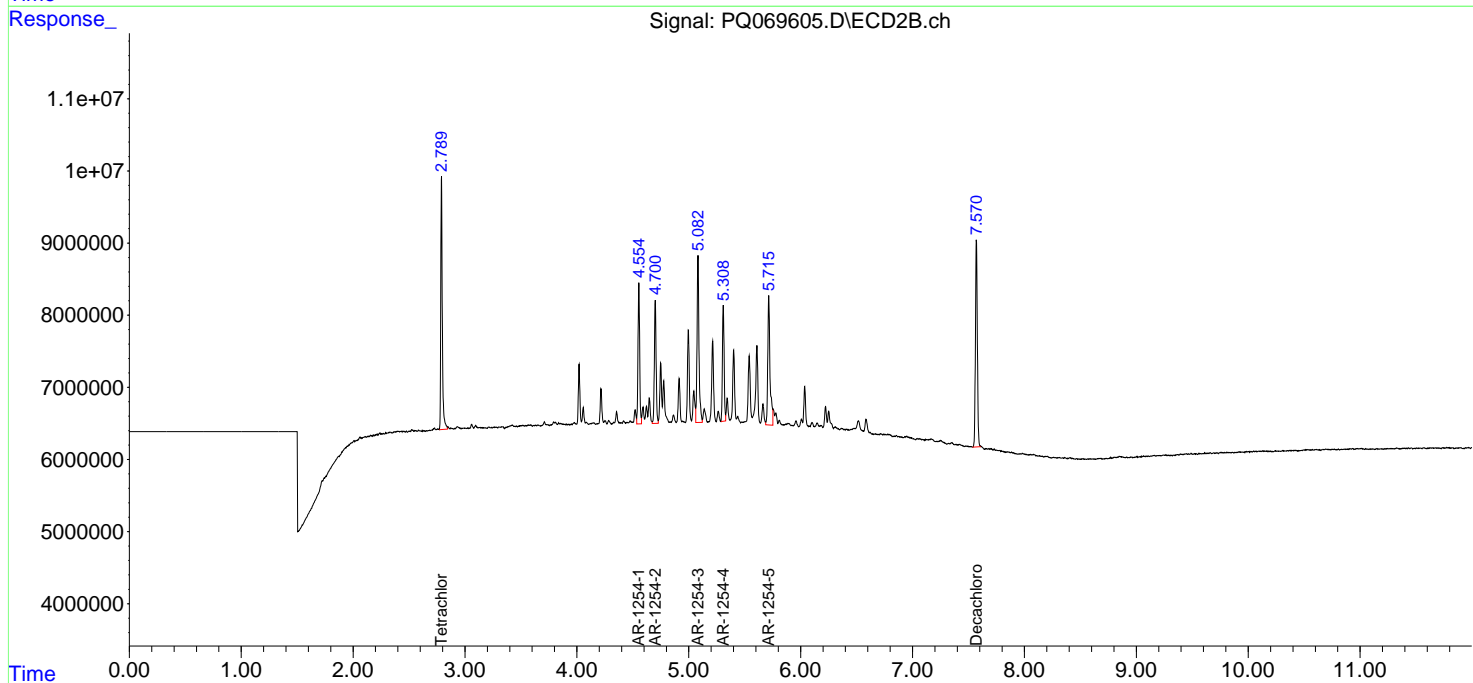
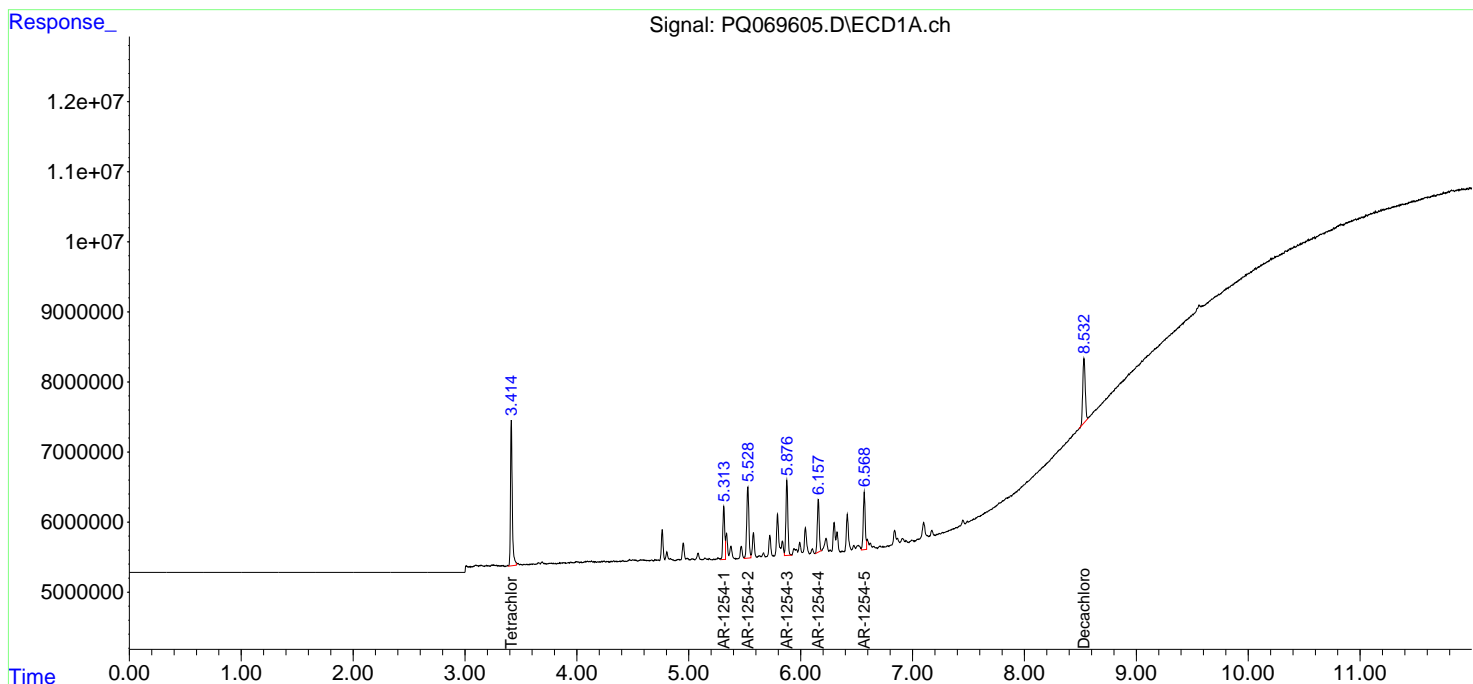
(f)=RT Delta > 1/2 Window (#)=Amounts differ by > 25% (m)=manual int.

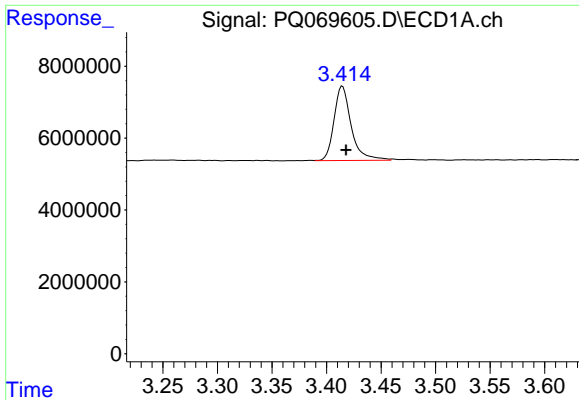
Data Path : Z:\pestpcbsrv\HPCHEM1\ECD_Q\Data\PQ120524\
 Data File : PQ069605.D
 Signal(s) : Signal #1: ECD1A.ch Signal #2: ECD2B.ch
 Acq On : 05 Dec 2024 17:12
 Operator : YP\AJ
 Sample : AR1254IC050
 Misc :
 ALS Vial : 24 Sample Multiplier: 1

Instrument :
 ECD_Q
 ClientSampleId :
 AR1254IC050

Integration File signal 1: autoint1.e
 Integration File signal 2: autoint2.e
 Quant Time: Dec 05 22:31:11 2024
 Quant Method : Z:\pestpcbsrv\HPCHEM1\ECD_Q\Method\PQ120524.M
 Quant Title : GC EXTRACTABLES
 QLast Update : Thu Dec 05 22:28:47 2024
 Response via : Initial Calibration
 Integrator: ChemStation

Volume Inj. : 2 µl
 Signal #1 Phase : ZB-MR1 Signal #2 Phase: ZB-MR2
 Signal #1 Info : 30Mx0.32mmx 0.50µ Signal #2 Info : 30M x 0.32mm x 0.25µm

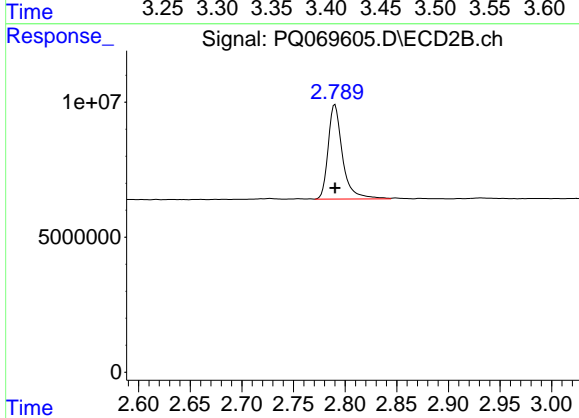




#1 Tetrachloro-m-xylene

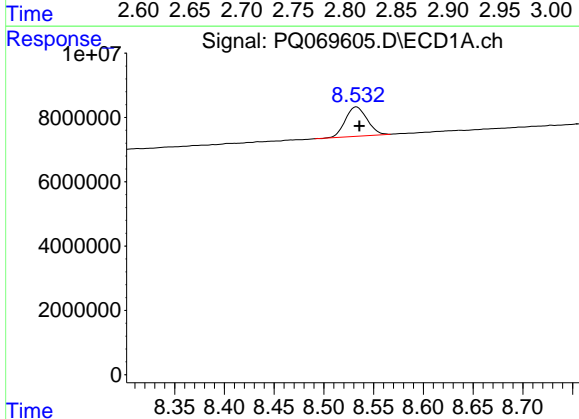
R.T.: 3.415 min
 Delta R.T.: -0.003 min
 Response: 22724156
 Conc: 4.73 ng/ml

Instrument :
 ECD_Q
 ClientSampleId :
 AR1254IC050



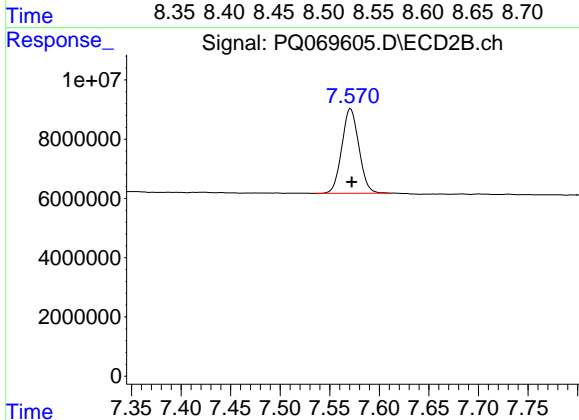
#1 Tetrachloro-m-xylene

R.T.: 2.790 min
 Delta R.T.: 0.000 min
 Response: 33971940
 Conc: 5.00 ng/ml



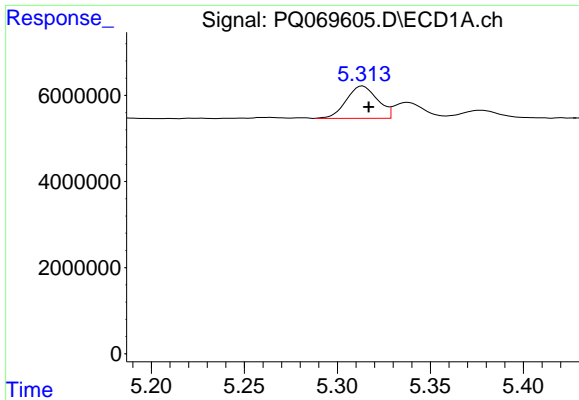
#2 Decachlorobiphenyl

R.T.: 8.533 min
 Delta R.T.: -0.003 min
 Response: 13849969
 Conc: 4.46 ng/ml



#2 Decachlorobiphenyl

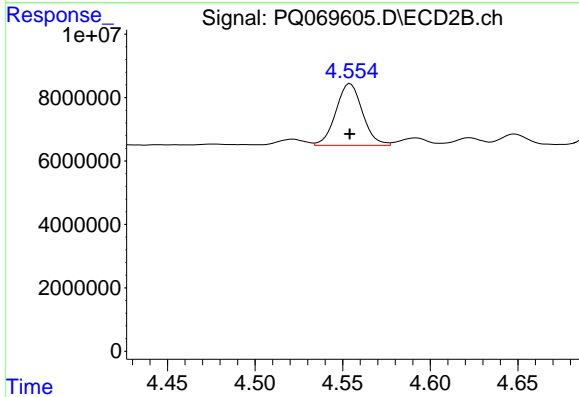
R.T.: 7.571 min
 Delta R.T.: -0.001 min
 Response: 34273289
 Conc: 5.09 ng/ml



#26 AR-1254-1

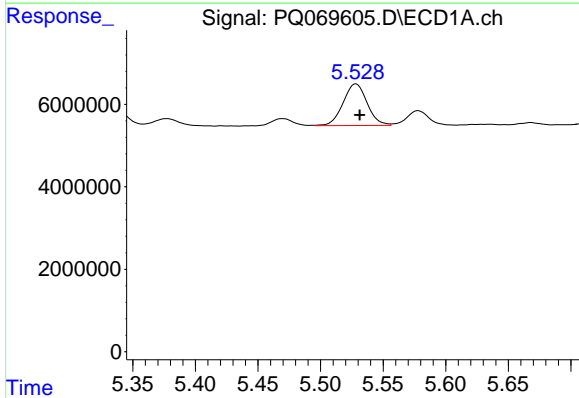
R.T.: 5.314 min
 Delta R.T.: -0.003 min
 Response: 8777987
 Conc: 50.32 ng/ml

Instrument :
 ECD_Q
 ClientSampleId :
 AR1254ICC050



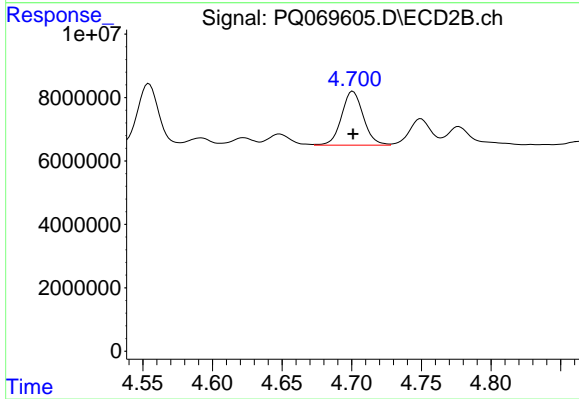
#26 AR-1254-1

R.T.: 4.554 min
 Delta R.T.: 0.000 min
 Response: 20572552
 Conc: 55.26 ng/ml



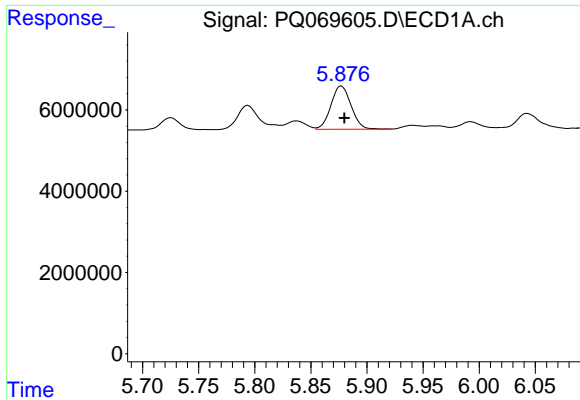
#27 AR-1254-2

R.T.: 5.528 min
 Delta R.T.: -0.003 min
 Response: 13579794
 Conc: 50.45 ng/ml



#27 AR-1254-2

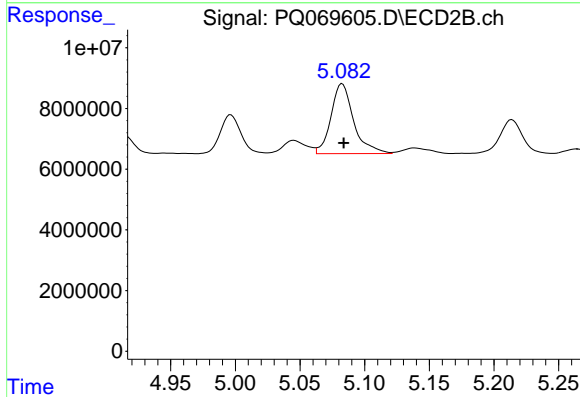
R.T.: 4.701 min
 Delta R.T.: 0.000 min
 Response: 18488855
 Conc: 56.63 ng/ml



#28 AR-1254-3

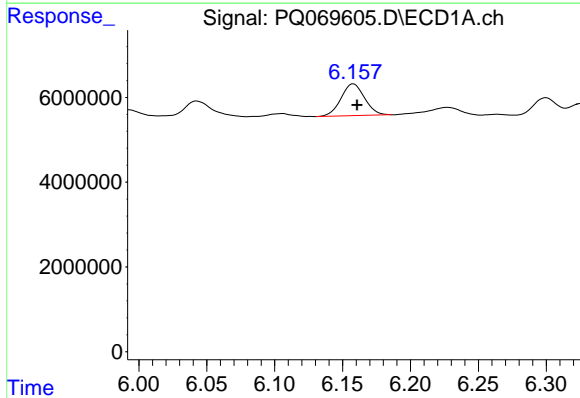
R.T.: 5.877 min
 Delta R.T.: -0.003 min
 Response: 13287488
 Conc: 47.90 ng/ml

Instrument :
 ECD_Q
 ClientSampleId :
 AR1254ICC050



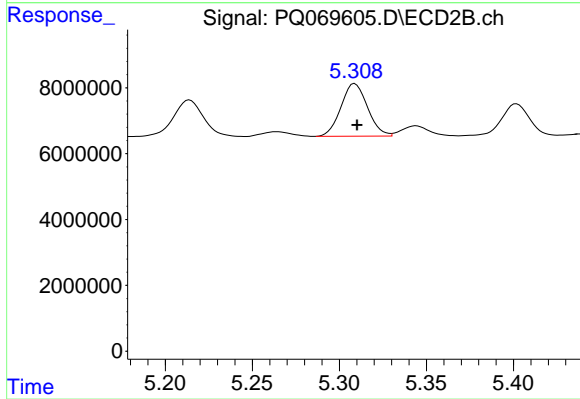
#28 AR-1254-3

R.T.: 5.083 min
 Delta R.T.: -0.001 min
 Response: 28084249
 Conc: 53.43 ng/ml



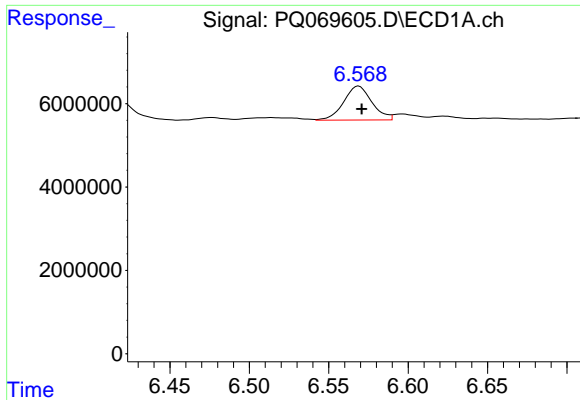
#29 AR-1254-4

R.T.: 6.158 min
 Delta R.T.: -0.003 min
 Response: 9058462
 Conc: 49.66 ng/ml



#29 AR-1254-4

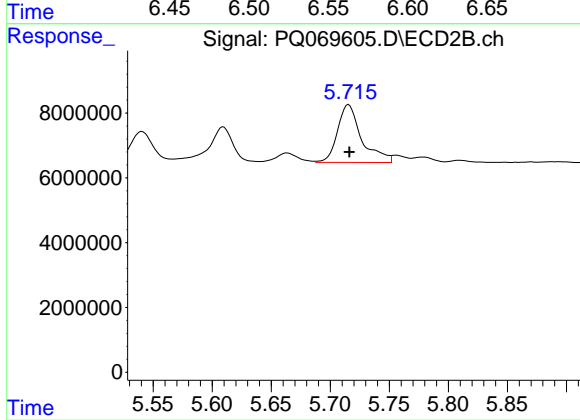
R.T.: 5.309 min
 Delta R.T.: -0.001 min
 Response: 17004074
 Conc: 52.92 ng/ml



#30 AR-1254-5

R.T.: 6.569 min
 Delta R.T.: -0.002 min
 Response: 10082784
 Conc: 47.47 ng/ml

Instrument :
 ECD_Q
 ClientSampleId :
 AR1254IC050



#30 AR-1254-5

R.T.: 5.716 min
 Delta R.T.: 0.000 min
 Response: 25296182
 Conc: 52.06 ng/ml