

Data Path : Z:\pestpcbsrv\HPCHEM1\ECD\_Q\Data\PQ120618\  
Data File : PQ035272.D  
Signal(s) : Signal #1: ECD1A.ch Signal #2: ECD2B.ch  
Acq On : 06 Dec 2018 09:13  
Operator : SM\SJ  
Sample : HEXANE  
Misc :  
ALS Vial : 1 Sample Multiplier: 1

Instrument :  
ECD\_Q  
ClientSampleId :

Integration File signal 1: autoint1.e  
Integration File signal 2: autoint2.e  
Quant Time: Dec 07 00:33:39 2018  
Quant Method : Z:\pestpcbsrv\HPCHEM1\ECD\_Q\Method\PQ120518.M  
Quant Title : GC EXTRACTABLES  
QLast Update : Tue Dec 04 11:50:47 2018  
Response via : Initial Calibration  
Integrator: ChemStation

Volume Inj. : 2 µl  
Signal #1 Phase : ZB-MR1 Signal #2 Phase: ZB-MR2  
Signal #1 Info : 30Mx0.32mmx 0.50µ Signal #2 Info : 30M x 0.32mm x 0.25µm

Compound	RT#1	RT#2	Resp#1	Resp#2	ng/ml	ng/ml
----------	------	------	--------	--------	-------	-------

-----  
System Monitoring Compounds

Target Compounds  
-----

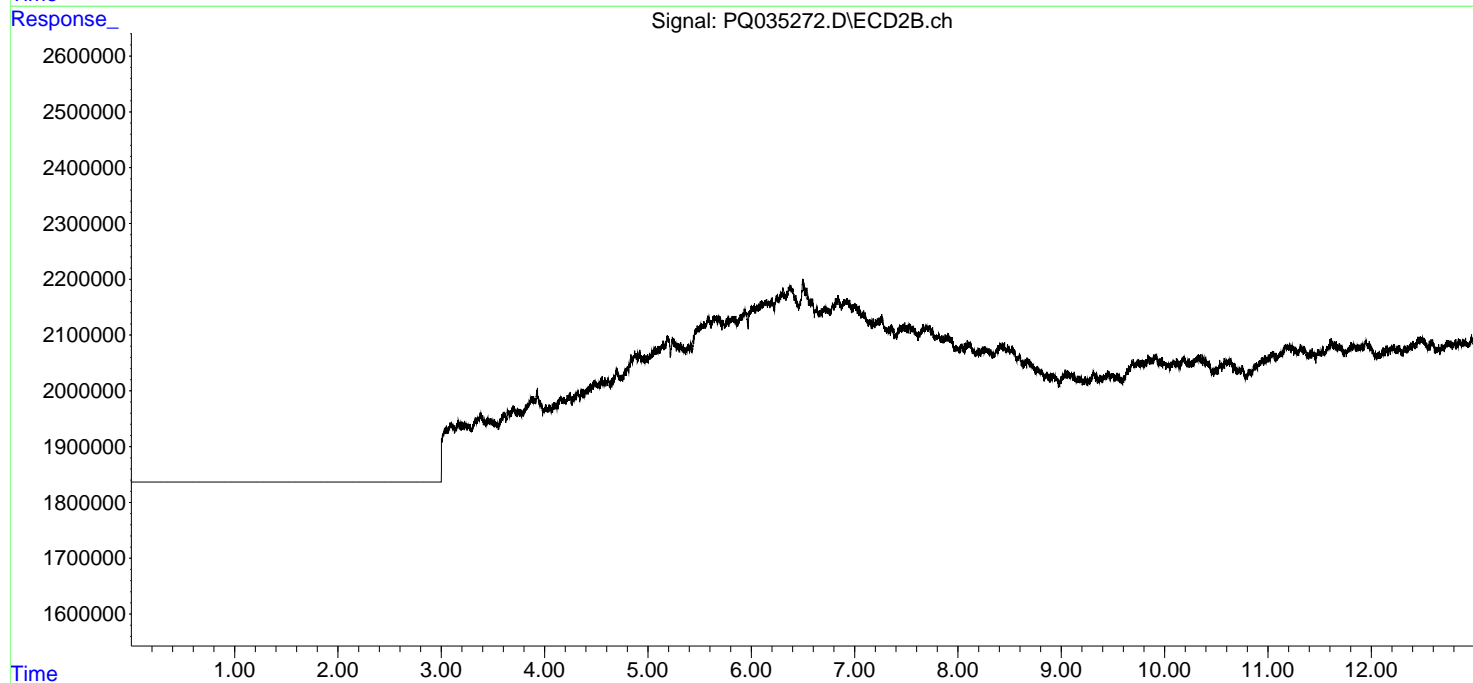
(f)=RT Delta > 1/2 Window (#)=Amounts differ by > 25% (m)=manual int.

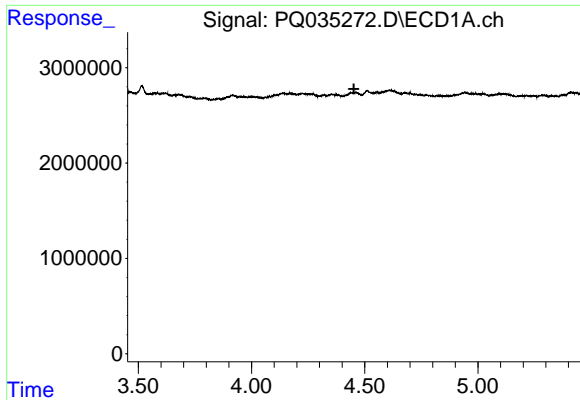
Data Path : Z:\pestpcbsrv\HPCHEM1\ECD\_Q\Data\PQ120618\  
Data File : PQ035272.D  
Signal(s) : Signal #1: ECD1A.ch Signal #2: ECD2B.ch  
Acq On : 06 Dec 2018 09:13  
Operator : SM\SJ  
Sample : HEXANE  
Misc :  
ALS Vial : 1 Sample Multiplier: 1

Instrument :  
ECD\_Q  
ClientSampleId :

Integration File signal 1: autoint1.e  
Integration File signal 2: autoint2.e  
Quant Time: Dec 07 00:33:39 2018  
Quant Method : Z:\pestpcbsrv\HPCHEM1\ECD\_Q\Method\PQ120518.M  
Quant Title : GC EXTRACTABLES  
QLast Update : Tue Dec 04 11:50:47 2018  
Response via : Initial Calibration  
Integrator: ChemStation

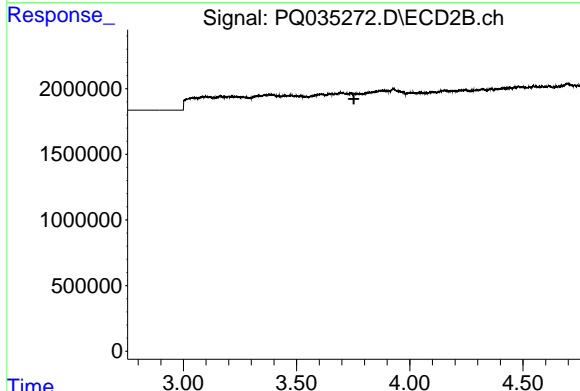
Volume Inj. : 2 µl  
Signal #1 Phase : ZB-MR1 Signal #2 Phase: ZB-MR2  
Signal #1 Info : 30Mx0.32mmx 0.50µ Signal #2 Info : 30M x 0.32mm x 0.25µm



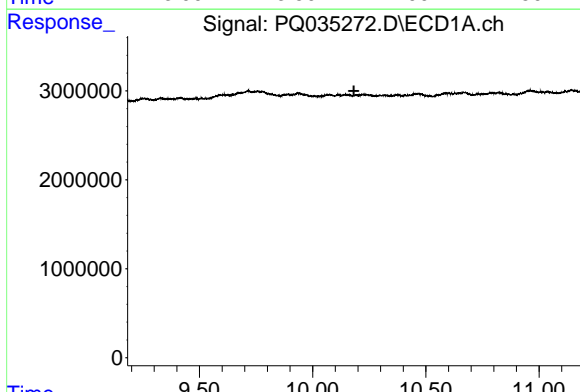


#1 Tetrachloro-m-xylene  
 R.T.: 0.000 min  
 Exp R.T. : 4.452 min  
 Response: 0  
 Conc: N.D.

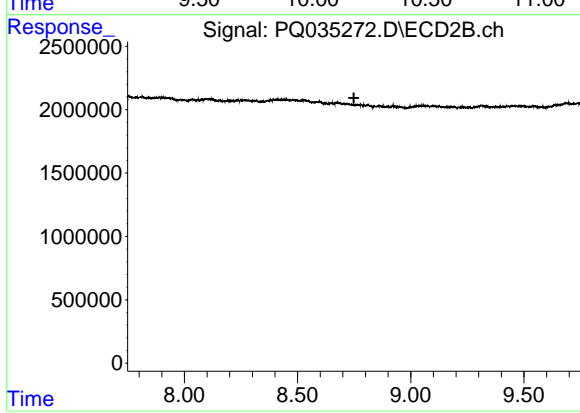
Instrument :  
 ECD\_Q  
 ClientSampleId :



#1 Tetrachloro-m-xylene  
 R.T.: 0.000 min  
 Exp R.T. : 3.753 min  
 Response: 0  
 Conc: N.D.



#2 Decachlorobiphenyl  
 R.T.: 0.000 min  
 Exp R.T. : 10.182 min  
 Response: 0  
 Conc: N.D.



#2 Decachlorobiphenyl  
 R.T.: 0.000 min  
 Exp R.T. : 8.749 min  
 Response: 0  
 Conc: N.D.