

Data Path : Z:\pestpcbsrv\HPCHEM1\ECD_Q\Data\PQ120618\
 Data File : PQ035276.D
 Signal(s) : Signal #1: ECD1A.ch Signal #2: ECD2B.ch
 Acq On : 06 Dec 2018 15:09
 Operator : SM\SJ
 Sample : J6204-15RE
 Misc :
 ALS Vial : 5 Sample Multiplier: 1

Instrument :
 ECD_Q
 ClientSampleId :
 HLSP-SB-8A-(0-2)RE

Integration File signal 1: autoint1.e
 Integration File signal 2: autoint2.e
 Quant Time: Dec 07 00:35:13 2018
 Quant Method : Z:\pestpcbsrv\HPCHEM1\ECD_Q\Method\PQ120518.M
 Quant Title : GC EXTRACTABLES
 QLast Update : Tue Dec 04 11:50:47 2018
 Response via : Initial Calibration
 Integrator: ChemStation

Volume Inj. : 2 µl
 Signal #1 Phase : ZB-MR1 Signal #2 Phase: ZB-MR2
 Signal #1 Info : 30Mx0.32mmx 0.50µ Signal #2 Info : 30M x 0.32mm x 0.25µm

Compound	RT#1	RT#2	Resp#1	Resp#2	ng/ml	ng/ml
----------	------	------	--------	--------	-------	-------

 System Monitoring Compounds

1) SA Tetrachlo...	4.453	3.754	62149721	37563541	15.546	17.087
2) SA Decachlor...	10.190	8.750	37346689	24083400	9.846	10.388

Target Compounds

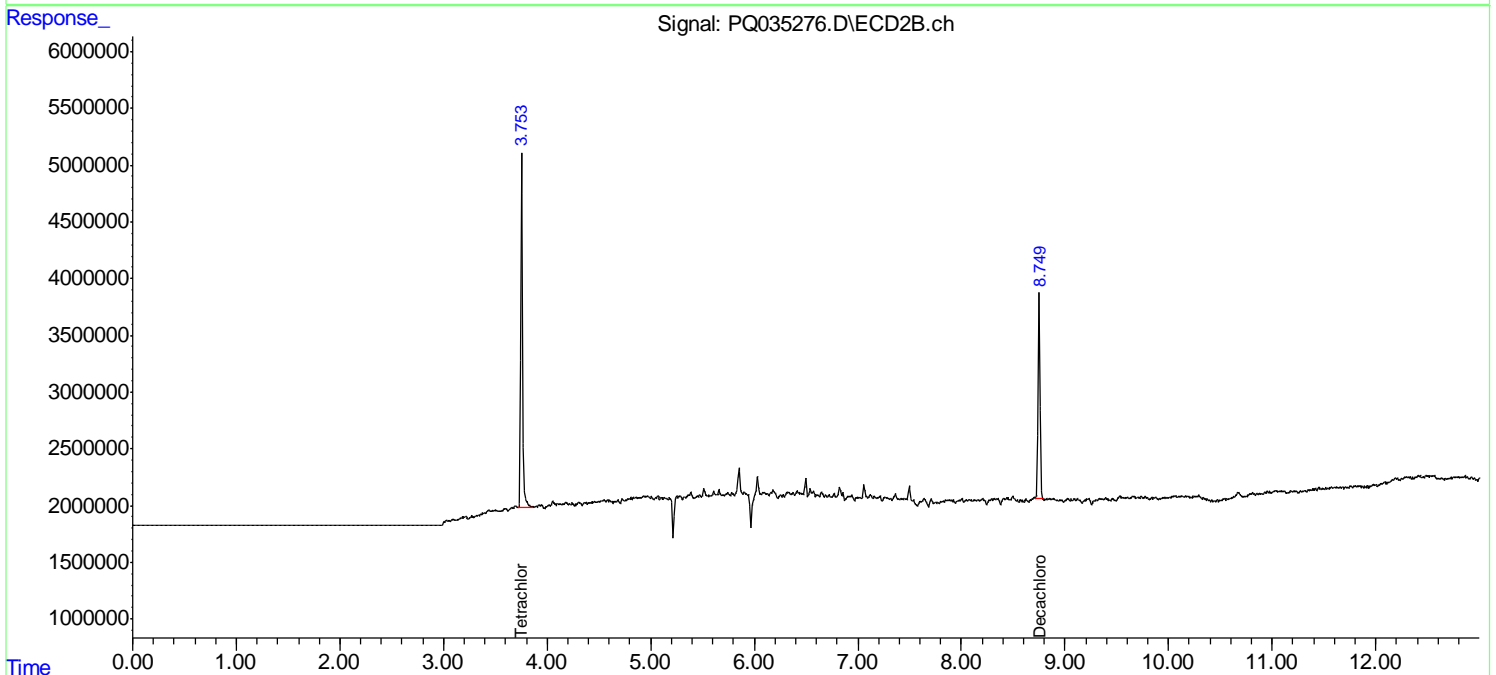
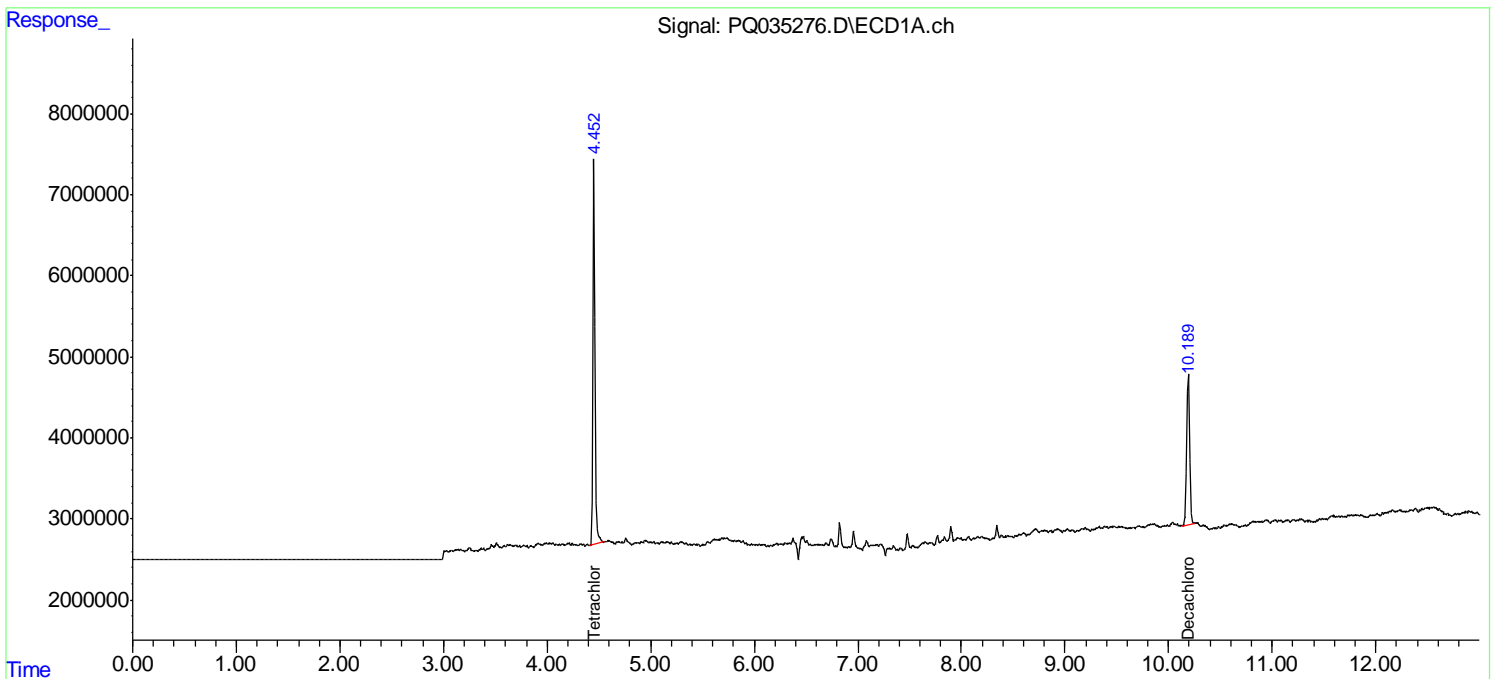
(f)=RT Delta > 1/2 Window (#)=Amounts differ by > 25% (m)=manual int.

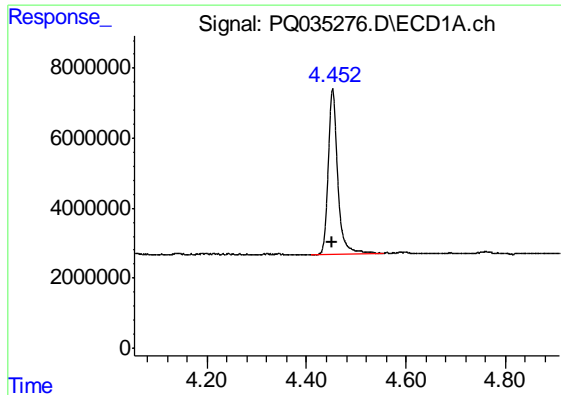
Data Path : Z:\pestpcbsrv\HPCHEM1\ECD_Q\Data\PQ120618\
 Data File : PQ035276.D
 Signal(s) : Signal #1: ECD1A.ch Signal #2: ECD2B.ch
 Acq On : 06 Dec 2018 15:09
 Operator : SM\SJ
 Sample : J6204-15RE
 Misc :
 ALS Vial : 5 Sample Multiplier: 1

Instrument :
 ECD_Q
ClientSampleId :
 HLSP-SB-8A-(0-2)RE

Integration File signal 1: autoint1.e
 Integration File signal 2: autoint2.e
 Quant Time: Dec 07 00:35:13 2018
 Quant Method : Z:\pestpcbsrv\HPCHEM1\ECD_Q\Method\PQ120518.M
 Quant Title : GC EXTRACTABLES
 QLast Update : Tue Dec 04 11:50:47 2018
 Response via : Initial Calibration
 Integrator: ChemStation

Volume Inj. : 2 µl
 Signal #1 Phase : ZB-MR1 Signal #2 Phase: ZB-MR2
 Signal #1 Info : 30Mx0.32mmx 0.50µ Signal #2 Info : 30M x 0.32mm x 0.25µm

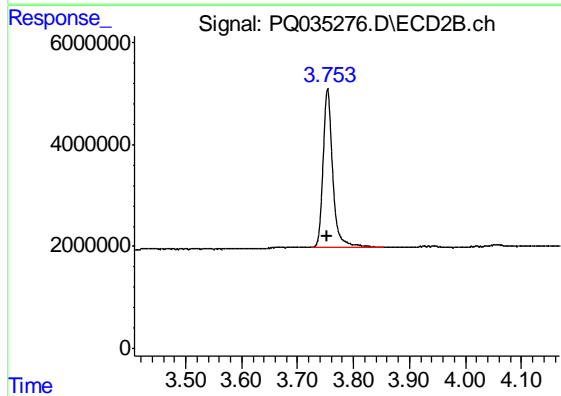




#1 Tetrachloro-m-xylene

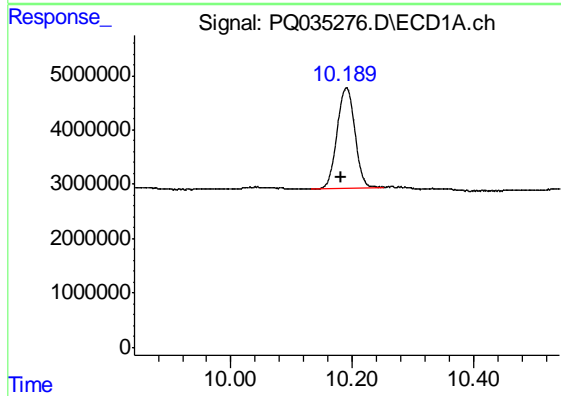
R.T.: 4.453 min
 Delta R.T.: 0.000 min
 Response: 62149721
 Conc: 15.55 ng/ml

Instrument :
 ECD_Q
 ClientSampleId :
 HLSP-SB-8A-(0-2)RE



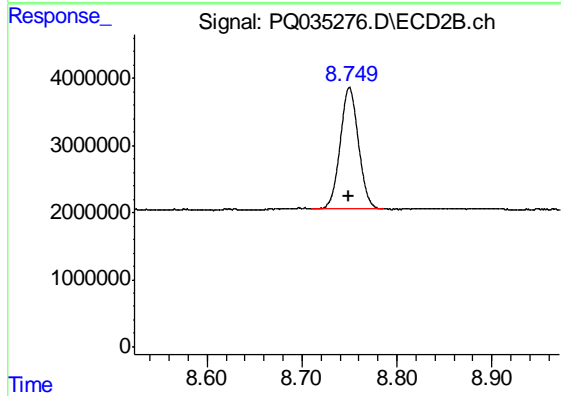
#1 Tetrachloro-m-xylene

R.T.: 3.754 min
 Delta R.T.: 0.000 min
 Response: 37563541
 Conc: 17.09 ng/ml



#2 Decachlorobiphenyl

R.T.: 10.190 min
 Delta R.T.: 0.008 min
 Response: 37346689
 Conc: 9.85 ng/ml



#2 Decachlorobiphenyl

R.T.: 8.750 min
 Delta R.T.: 0.001 min
 Response: 24083400
 Conc: 10.39 ng/ml