

Data Path : Z:\pestpcbsrv\HPCHEM1\ECD_Q\Data\PQ120618\
 Data File : PQ035277.D
 Signal(s) : Signal #1: ECD1A.ch Signal #2: ECD2B.ch
 Acq On : 06 Dec 2018 15:25
 Operator : SM\SJ
 Sample : J6204-11RE
 Misc :
 ALS Vial : 6 Sample Multiplier: 1

Instrument :
 ECD_Q
 ClientSampleId :
 HLSP-SB-7A-(0-2)RE

Integration File signal 1: autoint1.e
 Integration File signal 2: autoint2.e
 Quant Time: Dec 07 00:35:39 2018
 Quant Method : Z:\pestpcbsrv\HPCHEM1\ECD_Q\Method\PQ120518.M
 Quant Title : GC EXTRACTABLES
 QLast Update : Tue Dec 04 11:50:47 2018
 Response via : Initial Calibration
 Integrator: ChemStation

Volume Inj. : 2 µl
 Signal #1 Phase : ZB-MR1 Signal #2 Phase: ZB-MR2
 Signal #1 Info : 30Mx0.32mmx 0.50µ Signal #2 Info : 30M x 0.32mm x 0.25µm

Compound	RT#1	RT#2	Resp#1	Resp#2	ng/ml	ng/ml
----------	------	------	--------	--------	-------	-------

 System Monitoring Compounds

1) SA Tetrachlo...	4.450	3.753	76052700	44892432	19.024	20.420
2) SA Decachlor...	10.183	8.748	43013573	27713394	11.340	11.954

Target Compounds

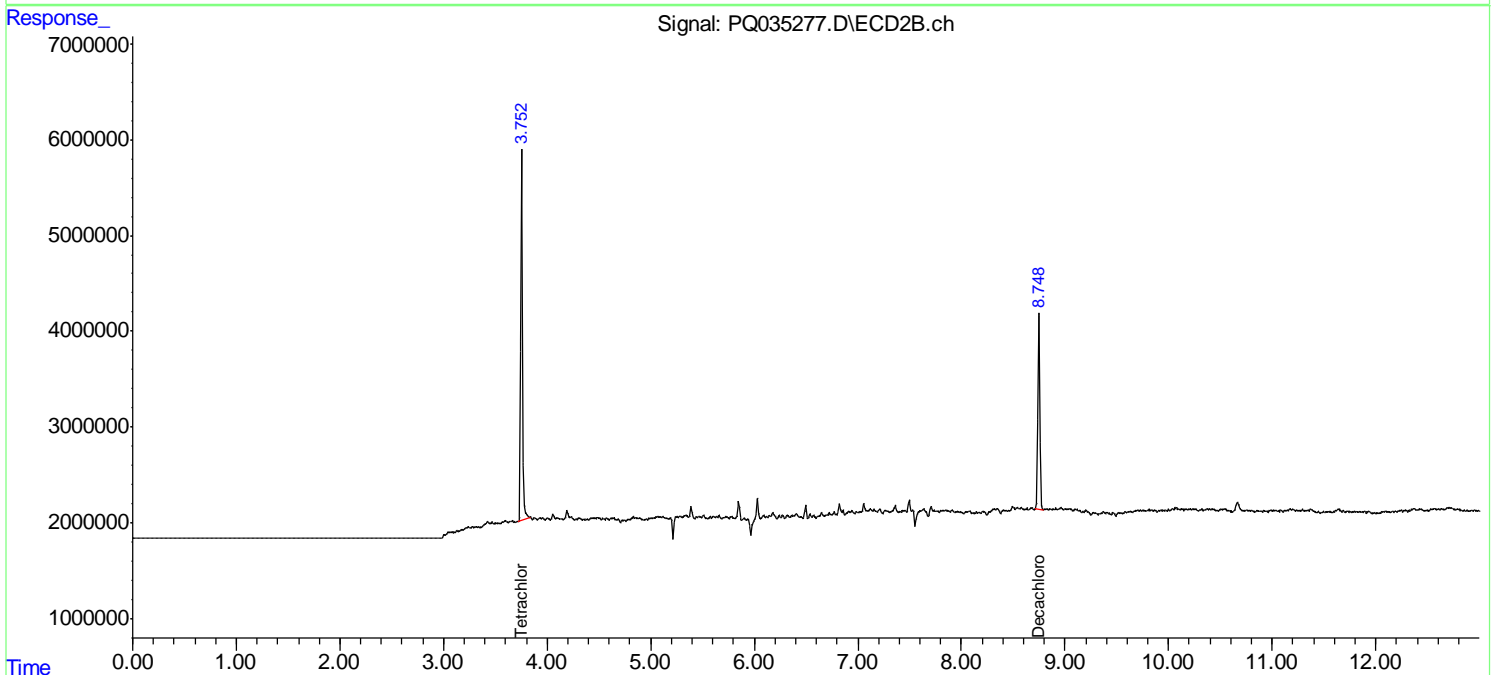
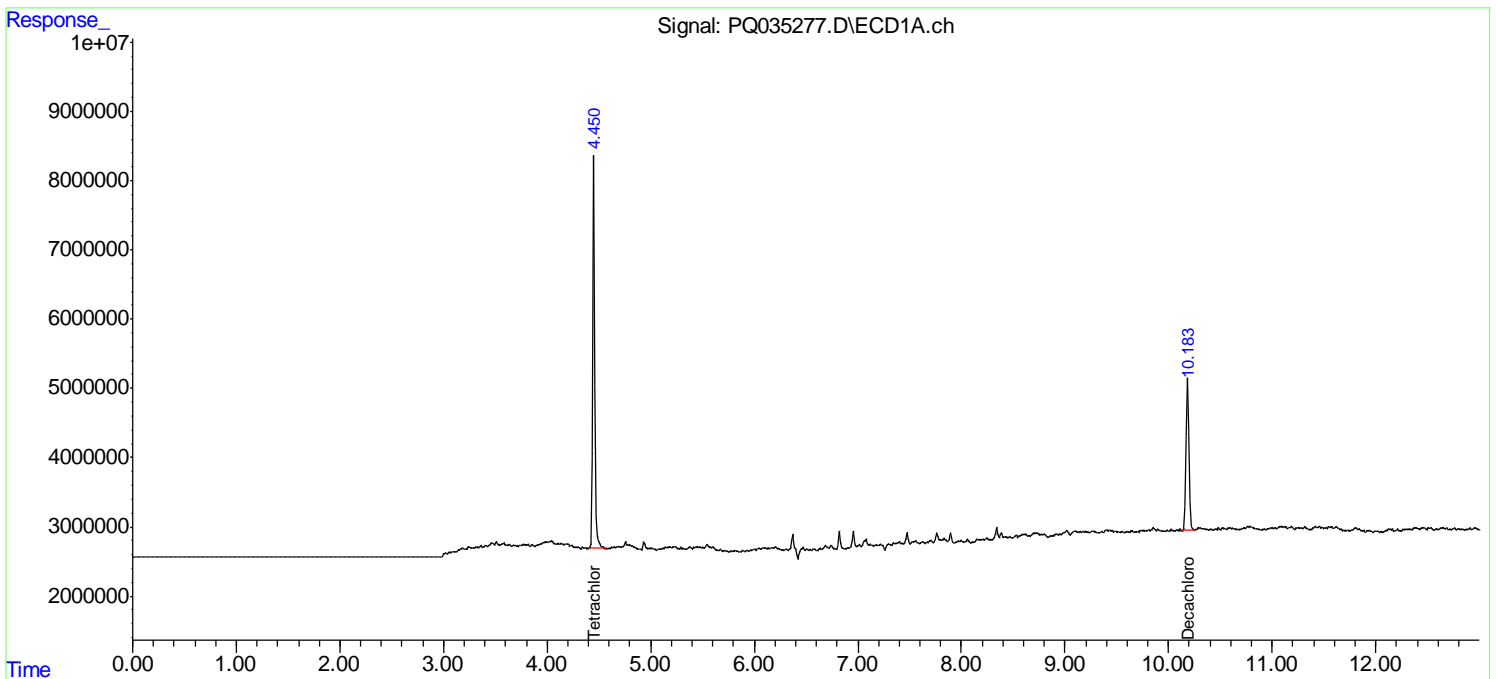
(f)=RT Delta > 1/2 Window (#)=Amounts differ by > 25% (m)=manual int.

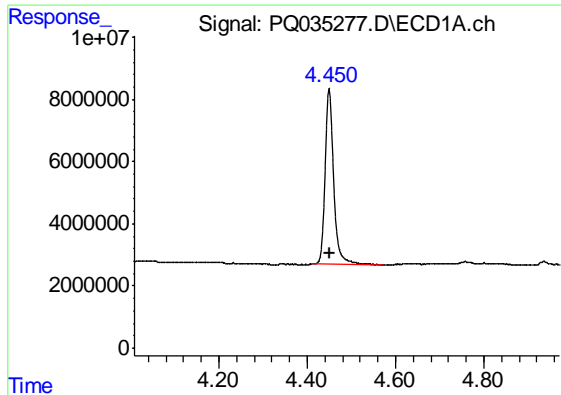
Data Path : Z:\pestpcbsrv\HPCHEM1\ECD_Q\Data\PQ120618\
 Data File : PQ035277.D
 Signal(s) : Signal #1: ECD1A.ch Signal #2: ECD2B.ch
 Acq On : 06 Dec 2018 15:25
 Operator : SM\SJ
 Sample : J6204-11RE
 Misc :
 ALS Vial : 6 Sample Multiplier: 1

Instrument :
 ECD_Q
 ClientSampleId :
 HLSP-SB-7A-(0-2)RE

Integration File signal 1: autoint1.e
 Integration File signal 2: autoint2.e
 Quant Time: Dec 07 00:35:39 2018
 Quant Method : Z:\pestpcbsrv\HPCHEM1\ECD_Q\Method\PQ120518.M
 Quant Title : GC EXTRACTABLES
 QLast Update : Tue Dec 04 11:50:47 2018
 Response via : Initial Calibration
 Integrator: ChemStation

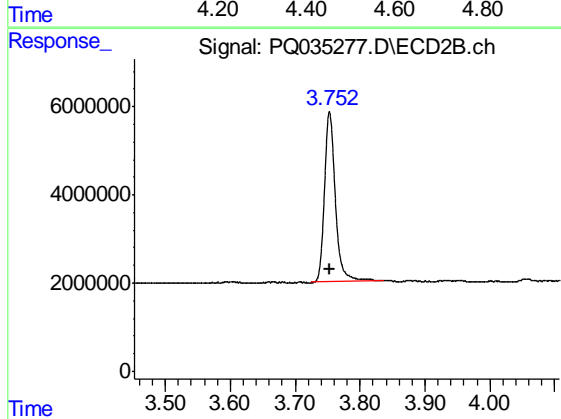
Volume Inj. : 2 µl
 Signal #1 Phase : ZB-MR1 Signal #2 Phase: ZB-MR2
 Signal #1 Info : 30Mx0.32mmx 0.50µ Signal #2 Info : 30M x 0.32mm x 0.25µm



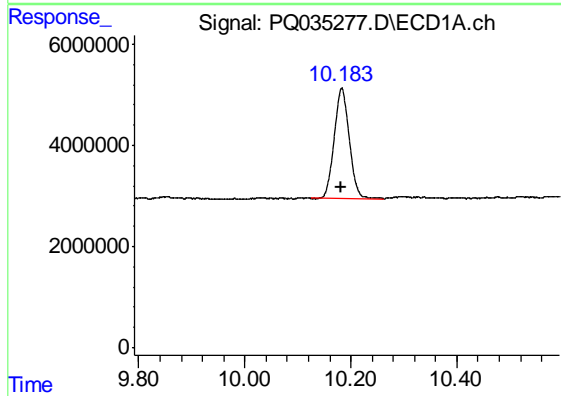


#1 Tetrachloro-m-xylene
 R.T.: 4.450 min
 Delta R.T.: -0.002 min
 Response: 76052700
 Conc: 19.02 ng/ml

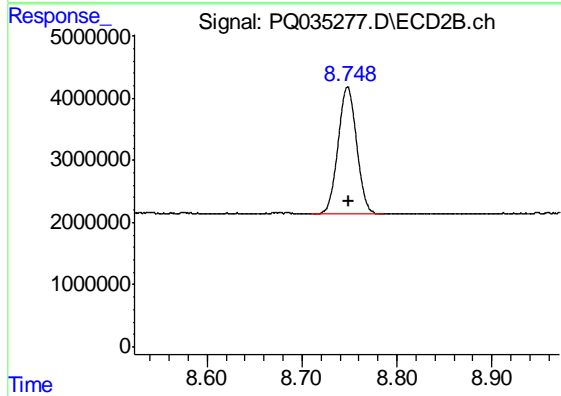
Instrument :
 ECD_Q
ClientSampleId :
 HLSP-SB-7A-(0-2)RE



#1 Tetrachloro-m-xylene
 R.T.: 3.753 min
 Delta R.T.: 0.000 min
 Response: 44892432
 Conc: 20.42 ng/ml



#2 Decachlorobiphenyl
 R.T.: 10.183 min
 Delta R.T.: 0.000 min
 Response: 43013573
 Conc: 11.34 ng/ml



#2 Decachlorobiphenyl
 R.T.: 8.748 min
 Delta R.T.: 0.000 min
 Response: 27713394
 Conc: 11.95 ng/ml