

Data Path : Z:\pestpcbsrv\HPCHEM1\ECD\_Q\Data\PQ120823\  
 Data File : PQ064339.D  
 Signal(s) : Signal #1: ECD1A.ch Signal #2: ECD2B.ch  
 Acq On : 08 Dec 2023 20:02  
 Operator : YP\AJ  
 Sample : AR1248ICC250  
 Misc :  
 ALS Vial : 18 Sample Multiplier: 1

Instrument :  
 ECD\_Q  
 ClientSampleId :  
 AR1248ICC250

Integration File signal 1: autoint1.e  
 Integration File signal 2: autoint2.e  
 Quant Time: Dec 09 04:20:28 2023  
 Quant Method : Z:\pestpcbsrv\HPCHEM1\ECD\_Q\Method\PQ120823.M  
 Quant Title : GC EXTRACTABLES  
 QLast Update : Sat Dec 09 04:20:21 2023  
 Response via : Initial Calibration  
 Integrator: ChemStation

Volume Inj. : 2 µl  
 Signal #1 Phase : ZB-MR1 Signal #2 Phase: ZB-MR2  
 Signal #1 Info : 30Mx0.32mmx 0.50µ Signal #2 Info : 30M x 0.32mm x 0.25µm

Compound	RT#1	RT#2	Resp#1	Resp#2	ng/ml	ng/ml
-----						
System Monitoring Compounds						
1) SA Tetrachlo...	3.456	2.773	102.9E6	117.4E6	25.546	26.098
2) SA Decachlor...	8.690	7.569	81705018	123.2E6	26.939	26.743
Target Compounds						
21) L5 AR-1248-1	4.571	3.783	20796021	21422330	264.710	267.587
22) L5 AR-1248-2	4.839	4.009	30063432	33093047	269.874	274.352
23) L5 AR-1248-3	5.032	4.045	35472081	31381137	268.127	273.542
24) L5 AR-1248-4	5.429	4.205	38265697	37528973	267.646	271.390
25) L5 AR-1248-5	5.464	4.581	37465501	35493168	265.892	268.966
-----						

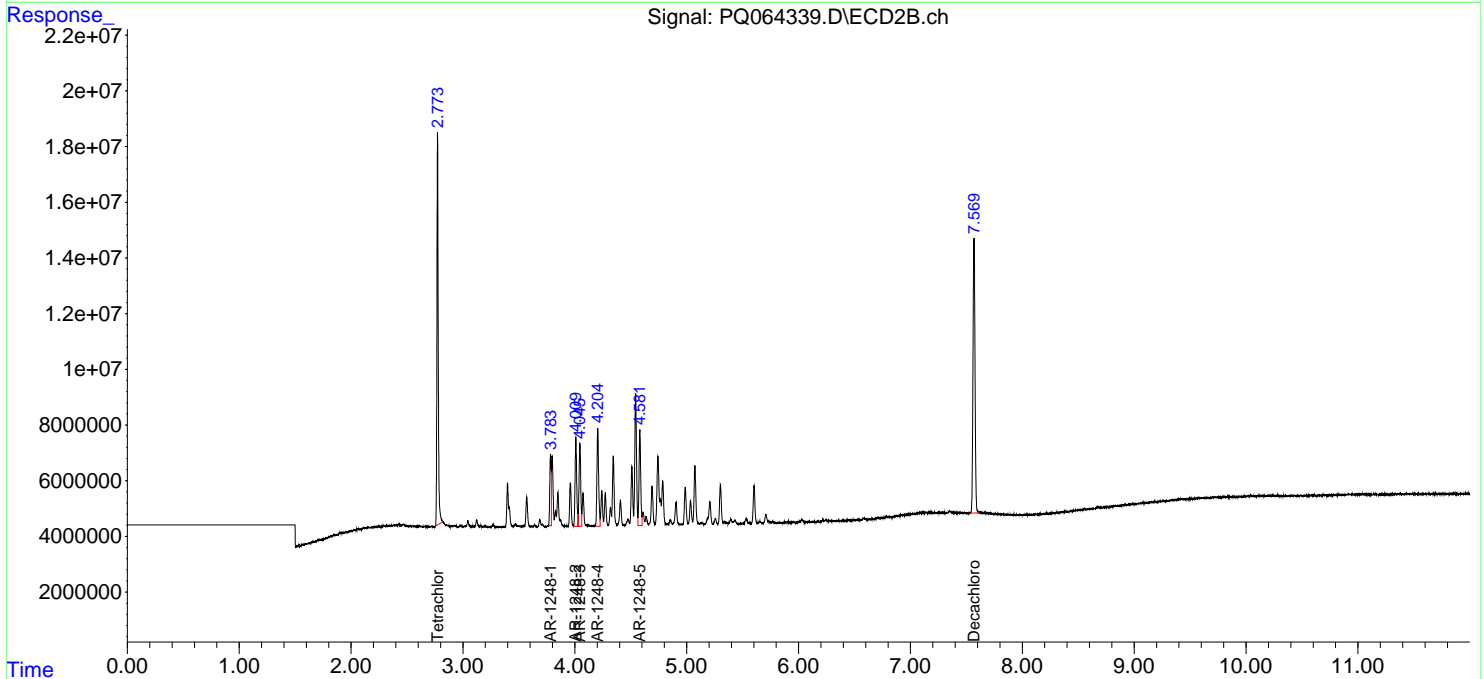
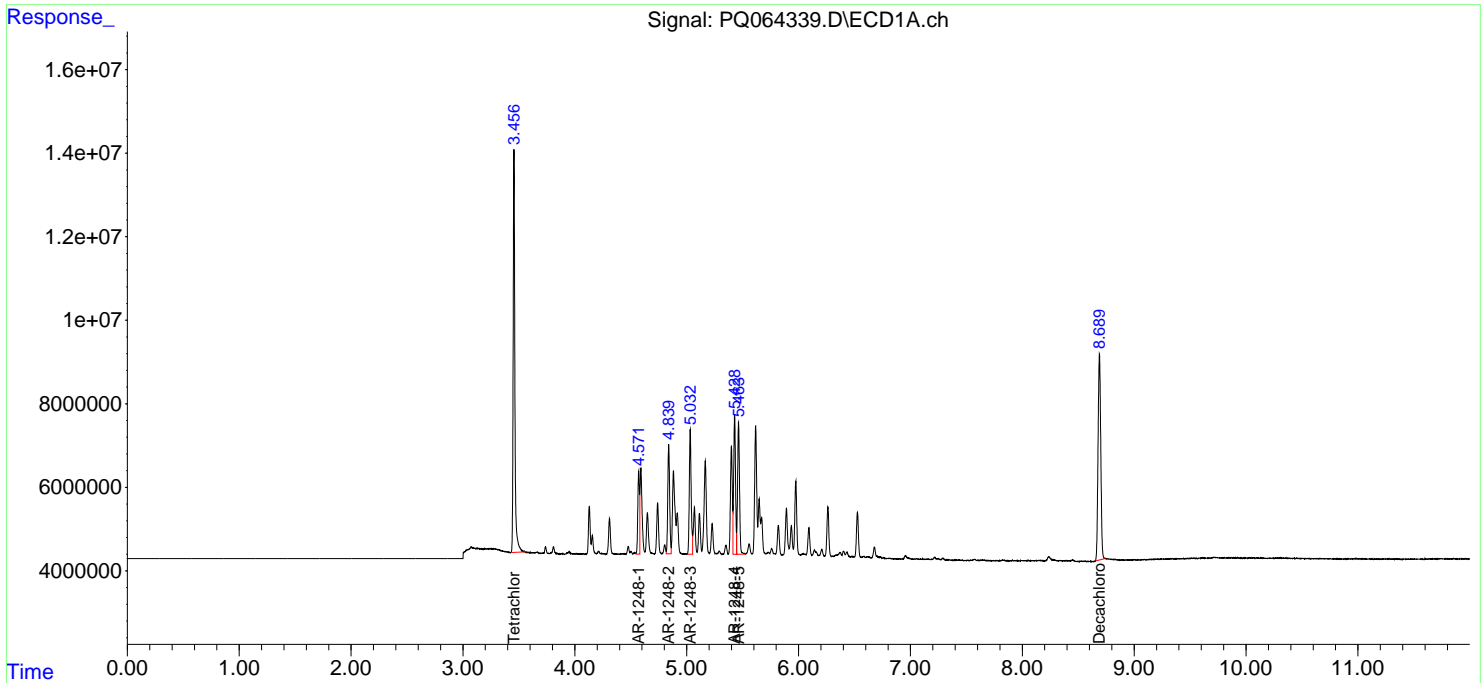
(f)=RT Delta > 1/2 Window (#)=Amounts differ by > 25% (m)=manual int.

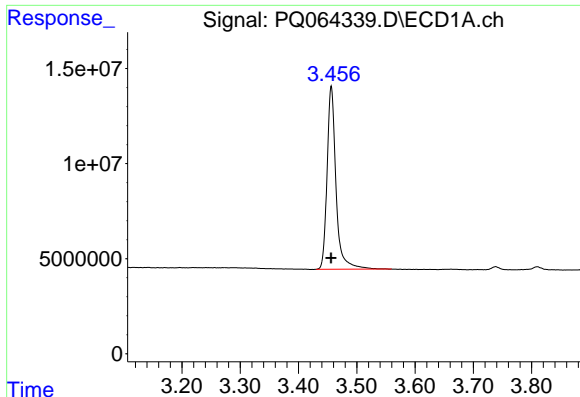
Data Path : Z:\pestpcbsrv\HPCHEM1\ECD\_Q\Data\PQ120823\  
 Data File : PQ064339.D  
 Signal(s) : Signal #1: ECD1A.ch Signal #2: ECD2B.ch  
 Acq On : 08 Dec 2023 20:02  
 Operator : YP\AJ  
 Sample : AR1248ICC250  
 Misc :  
 ALS Vial : 18 Sample Multiplier: 1

Instrument :  
 ECD\_Q  
 ClientSampleId :  
 AR1248ICC250

Integration File signal 1: autoint1.e  
 Integration File signal 2: autoint2.e  
 Quant Time: Dec 09 04:20:28 2023  
 Quant Method : Z:\pestpcbsrv\HPCHEM1\ECD\_Q\Method\PQ120823.M  
 Quant Title : GC EXTRACTABLES  
 QLast Update : Sat Dec 09 04:20:21 2023  
 Response via : Initial Calibration  
 Integrator: ChemStation

Volume Inj. : 2 µl  
 Signal #1 Phase : ZB-MR1 Signal #2 Phase: ZB-MR2  
 Signal #1 Info : 30Mx0.32mmx 0.50µ Signal #2 Info : 30M x 0.32mm x 0.25µm

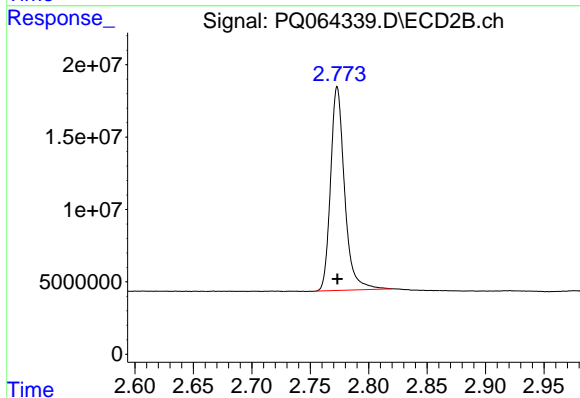




#1 Tetrachloro-m-xylene

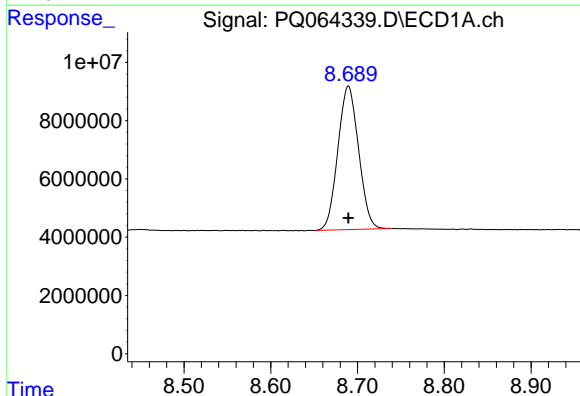
R.T.: 3.456 min  
Delta R.T.: 0.000 min  
Response: 102947025  
Conc: 25.55 ng/ml

Instrument :  
ECD\_Q  
ClientSampleId :  
AR1248ICC250



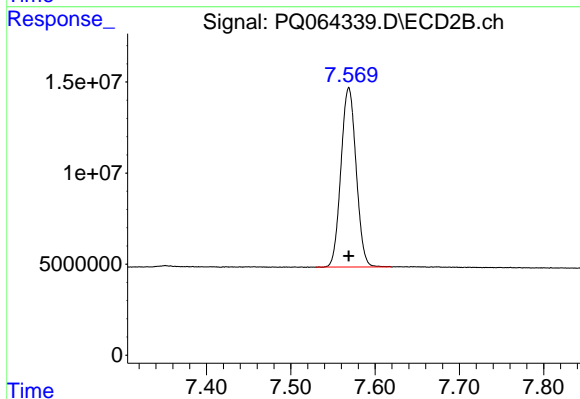
#1 Tetrachloro-m-xylene

R.T.: 2.773 min  
Delta R.T.: 0.000 min  
Response: 117406048  
Conc: 26.10 ng/ml



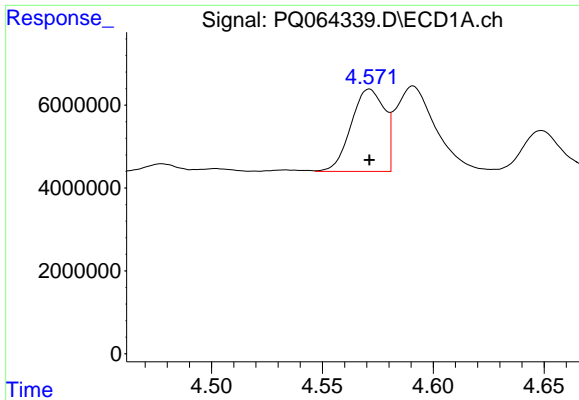
#2 Decachlorobiphenyl

R.T.: 8.690 min  
Delta R.T.: 0.000 min  
Response: 81705018  
Conc: 26.94 ng/ml



#2 Decachlorobiphenyl

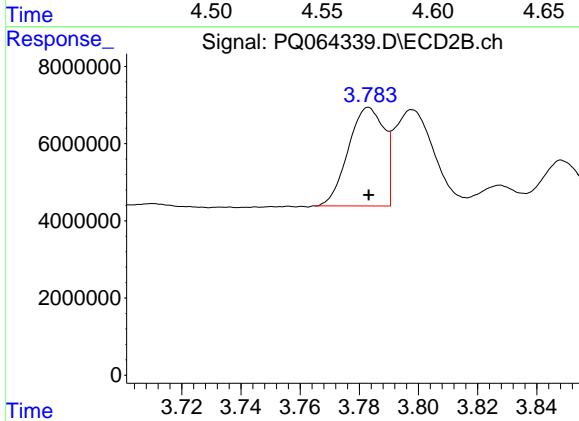
R.T.: 7.569 min  
Delta R.T.: 0.000 min  
Response: 123210007  
Conc: 26.74 ng/ml



#21 AR-1248-1

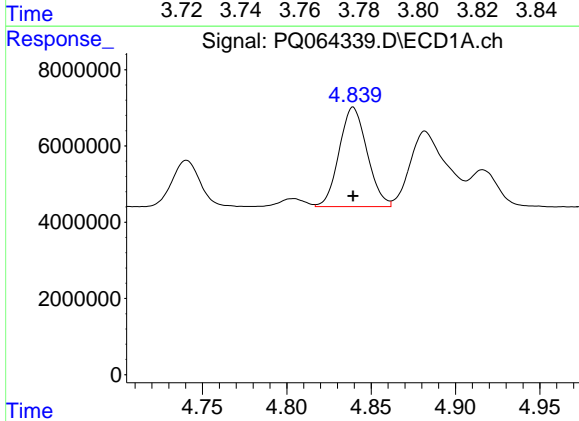
R.T.: 4.571 min  
 Delta R.T.: 0.000 min  
 Response: 20796021  
 Conc: 264.71 ng/ml

Instrument :  
 ECD\_Q  
 ClientSampleId :  
 AR1248ICC250



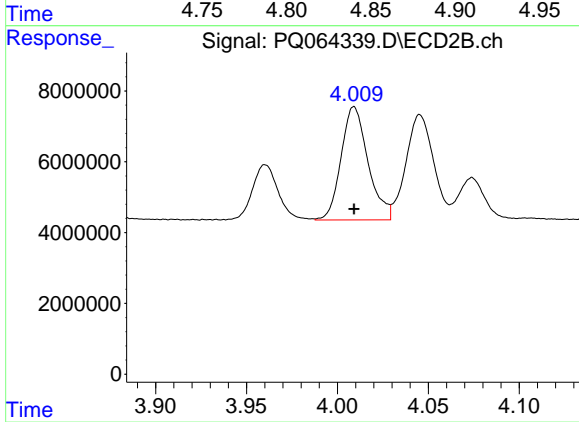
#21 AR-1248-1

R.T.: 3.783 min  
 Delta R.T.: 0.000 min  
 Response: 21422330  
 Conc: 267.59 ng/ml



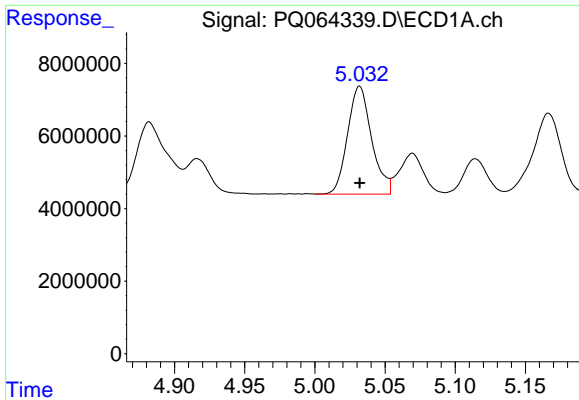
#22 AR-1248-2

R.T.: 4.839 min  
 Delta R.T.: 0.000 min  
 Response: 30063432  
 Conc: 269.87 ng/ml



#22 AR-1248-2

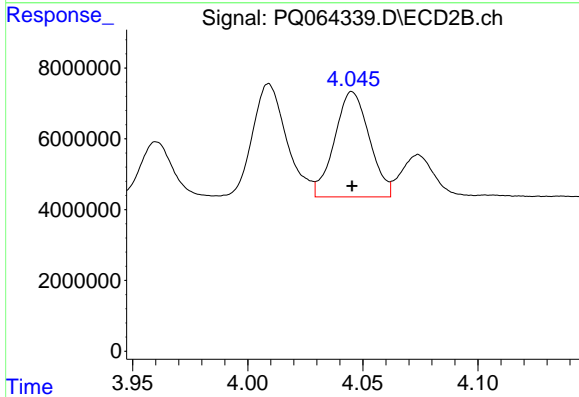
R.T.: 4.009 min  
 Delta R.T.: 0.000 min  
 Response: 33093047  
 Conc: 274.35 ng/ml



#23 AR-1248-3

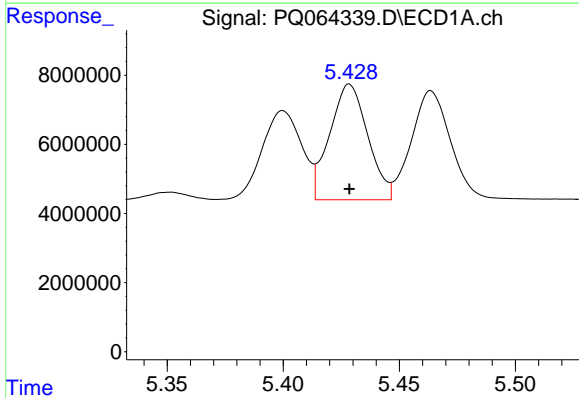
R.T.: 5.032 min  
 Delta R.T.: 0.000 min  
 Response: 35472081  
 Conc: 268.13 ng/ml

Instrument :  
 ECD\_Q  
 ClientSampleId :  
 AR1248ICC250



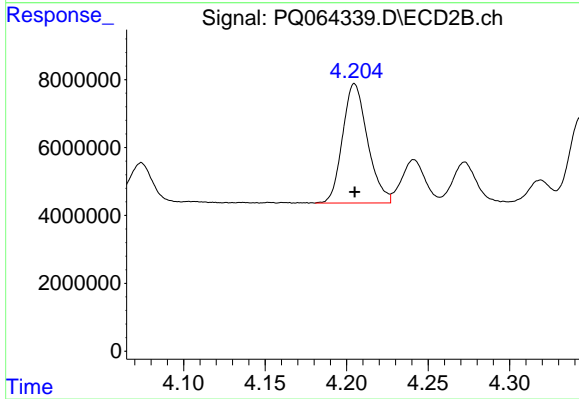
#23 AR-1248-3

R.T.: 4.045 min  
 Delta R.T.: 0.000 min  
 Response: 31381137  
 Conc: 273.54 ng/ml



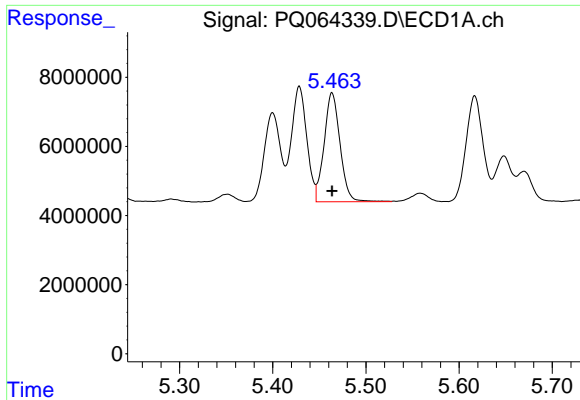
#24 AR-1248-4

R.T.: 5.429 min  
 Delta R.T.: 0.000 min  
 Response: 38265697  
 Conc: 267.65 ng/ml



#24 AR-1248-4

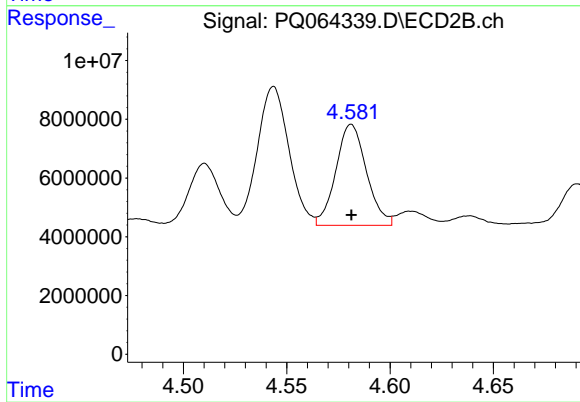
R.T.: 4.205 min  
 Delta R.T.: 0.000 min  
 Response: 37528973  
 Conc: 271.39 ng/ml



#25 AR-1248-5

R.T.: 5.464 min  
Delta R.T.: 0.000 min  
Response: 37465501  
Conc: 265.89 ng/ml

Instrument :  
ECD\_Q  
ClientSampleId :  
AR1248ICC250



#25 AR-1248-5

R.T.: 4.581 min  
Delta R.T.: 0.000 min  
Response: 35493168  
Conc: 268.97 ng/ml