

Data Path : Z:\pestpcbsrv\HPCHEM1\ECD\_Q\Data\PQ121123\  
 Data File : PQ064364.D  
 Signal(s) : Signal #1: ECD1A.ch Signal #2: ECD2B.ch  
 Acq On : 11 Dec 2023 12:13  
 Operator : YP\AJ  
 Sample : AR1660CCC500  
 Misc :  
 ALS Vial : 3 Sample Multiplier: 1

Instrument :  
 ECD\_Q  
 ClientSampleId :  
 AR1660CCC500

Integration File signal 1: autoint1.e  
 Integration File signal 2: autoint2.e  
 Quant Time: Dec 11 13:00:42 2023  
 Quant Method : Z:\pestpcbsrv\HPCHEM1\ECD\_Q\Method\PQ120823.M  
 Quant Title : GC EXTRACTABLES  
 QLast Update : Sat Dec 09 05:18:21 2023  
 Response via : Initial Calibration  
 Integrator: ChemStation

Volume Inj. : 2 µl  
 Signal #1 Phase : ZB-MR1 Signal #2 Phase: ZB-MR2  
 Signal #1 Info : 30Mx0.32mmx 0.50µ Signal #2 Info : 30M x 0.32mm x 0.25µm

| Compound                    | RT#1  | RT#2  | Resp#1   | Resp#2   | ng/ml   | ng/ml   |
|-----------------------------|-------|-------|----------|----------|---------|---------|
| -----                       |       |       |          |          |         |         |
| System Monitoring Compounds |       |       |          |          |         |         |
| 1) SA Tetrachlo...          | 3.456 | 2.773 | 176.6E6  | 192.9E6  | 42.577  | 45.945  |
| 2) SA Decachlor...          | 8.692 | 7.570 | 135.2E6  | 215.9E6  | 46.132  | 53.502  |
| Target Compounds            |       |       |          |          |         |         |
| 3) L1 AR-1016-1             | 4.572 | 3.783 | 55998399 | 56742211 | 439.524 | 466.861 |
| 4) L1 AR-1016-2             | 4.591 | 3.798 | 83423799 | 84401153 | 434.634 | 460.440 |
| 5) L1 AR-1016-3             | 4.650 | 3.959 | 52503554 | 45151093 | 442.493 | 464.009 |
| 6) L1 AR-1016-4             | 4.742 | 4.009 | 41470843 | 38669345 | 446.491 | 463.035 |
| 7) L1 AR-1016-5             | 5.032 | 4.205 | 43403363 | 46064933 | 445.498 | 455.011 |
| 31) L7 AR-1260-1            | 6.143 | 5.205 | 83693277 | 87154923 | 446.909 | 450.668 |
| 32) L7 AR-1260-2            | 6.405 | 5.395 | 98997445 | 104.9E6  | 456.633 | 450.808 |
| 33) L7 AR-1260-3            | 6.760 | 5.537 | 74499360 | 98191978 | 457.072 | 451.731 |
| 34) L7 AR-1260-4            | 6.979 | 6.001 | 82541454 | 83281226 | 481.155 | 452.128 |
| 35) L7 AR-1260-5            | 7.292 | 6.248 | 156.2E6  | 185.2E6  | 462.291 | 427.097 |
| -----                       |       |       |          |          |         |         |

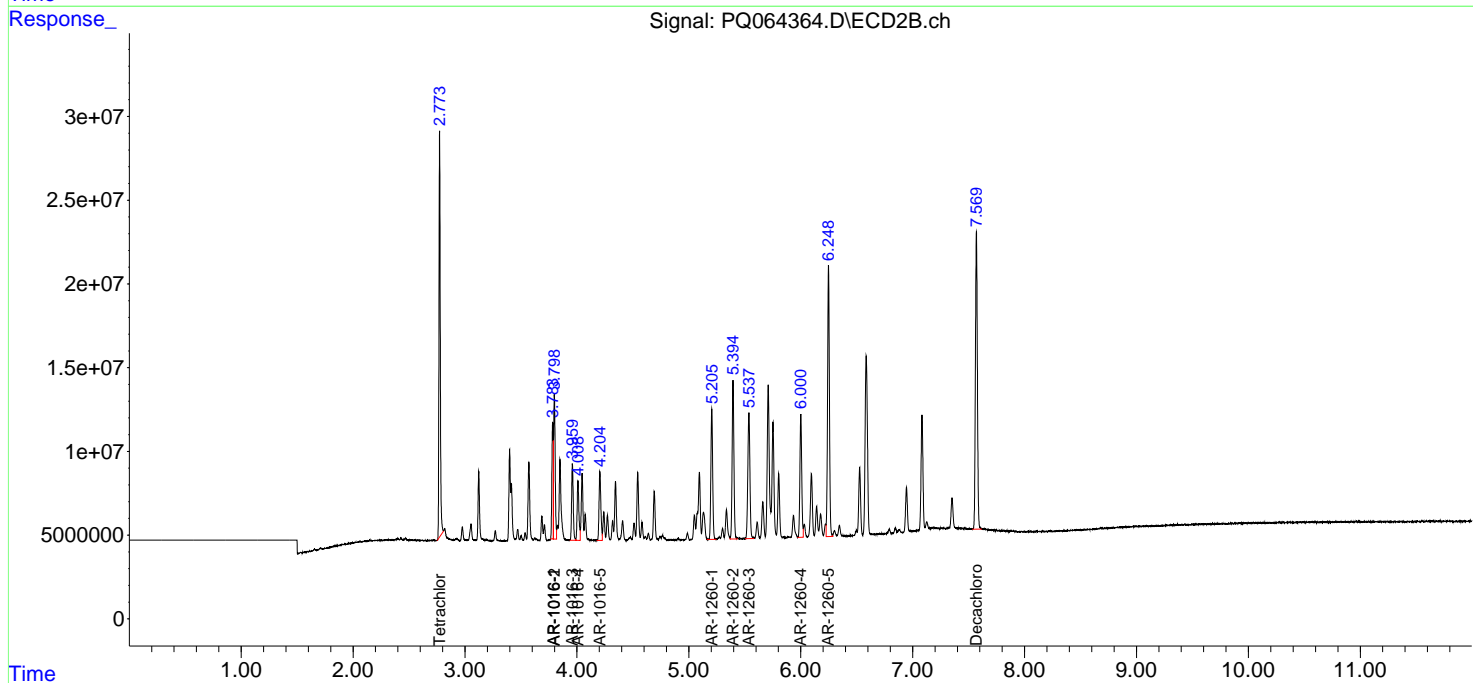
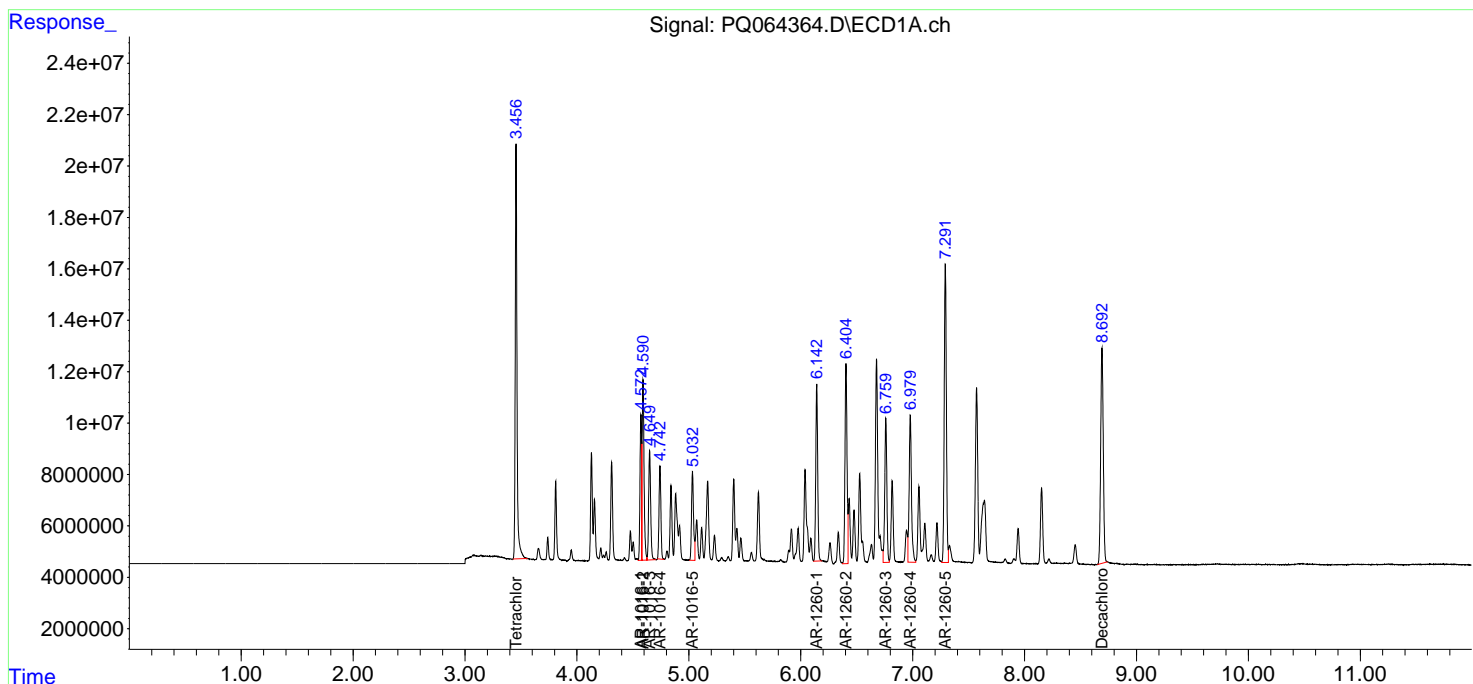
(f)=RT Delta > 1/2 Window (#)=Amounts differ by > 25% (m)=manual int.

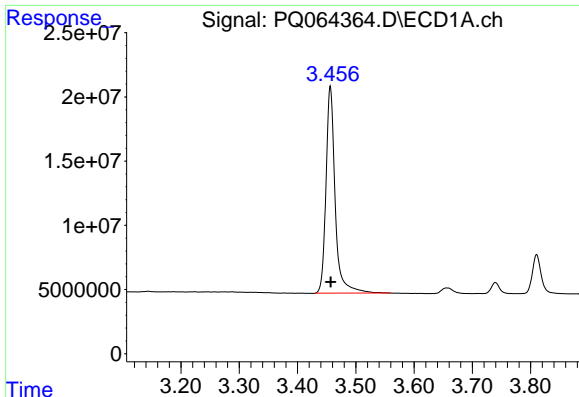
Data Path : Z:\pestpcbsrv\HPCHEM1\ECD\_Q\Data\PQ121123\  
 Data File : PQ064364.D  
 Signal(s) : Signal #1: ECD1A.ch Signal #2: ECD2B.ch  
 Acq On : 11 Dec 2023 12:13  
 Operator : YP\AJ  
 Sample : AR1660CCC500  
 Misc :  
 ALS Vial : 3 Sample Multiplier: 1

Instrument :  
 ECD\_Q  
 ClientSampleId :  
 AR1660CCC500

Integration File signal 1: autoint1.e  
 Integration File signal 2: autoint2.e  
 Quant Time: Dec 11 13:00:42 2023  
 Quant Method : Z:\pestpcbsrv\HPCHEM1\ECD\_Q\Method\PQ120823.M  
 Quant Title : GC EXTRACTABLES  
 QLast Update : Sat Dec 09 05:18:21 2023  
 Response via : Initial Calibration  
 Integrator: ChemStation

Volume Inj. : 2 µl  
 Signal #1 Phase : ZB-MR1 Signal #2 Phase: ZB-MR2  
 Signal #1 Info : 30Mx0.32mmx 0.50µ Signal #2 Info : 30M x 0.32mm x 0.25µm

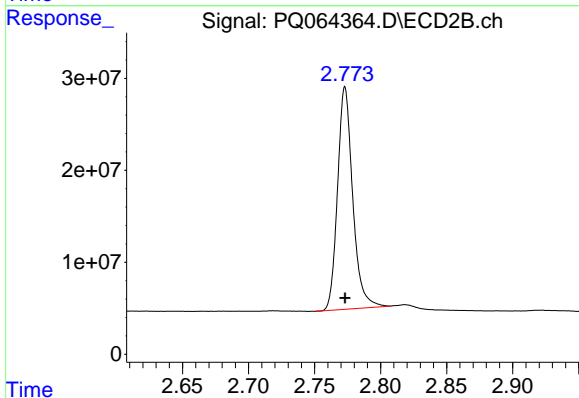




#1 Tetrachloro-m-xylene

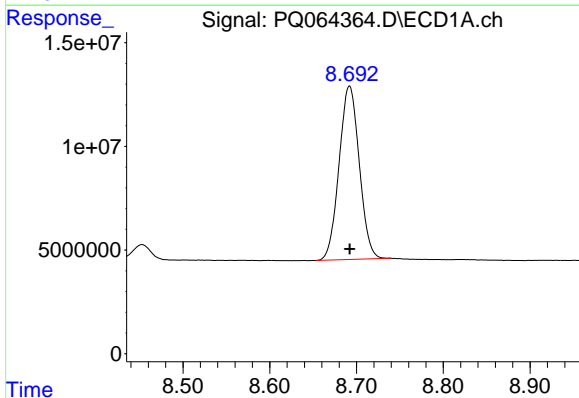
R.T.: 3.456 min  
 Delta R.T.: 0.000 min  
 Response: 176636989  
 Conc: 42.58 ng/ml

Instrument :  
 ECD\_Q  
 ClientSampleId :  
 AR1660CCC500



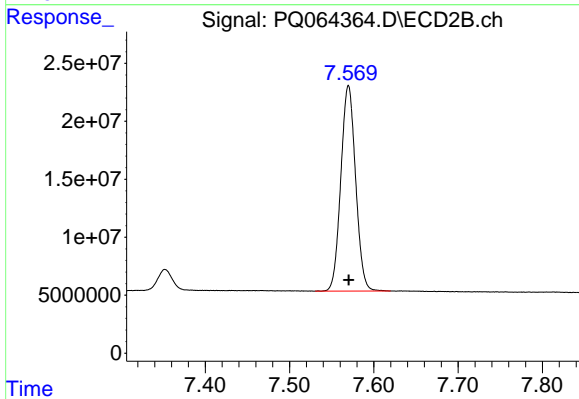
#1 Tetrachloro-m-xylene

R.T.: 2.773 min  
 Delta R.T.: 0.000 min  
 Response: 192894853  
 Conc: 45.94 ng/ml



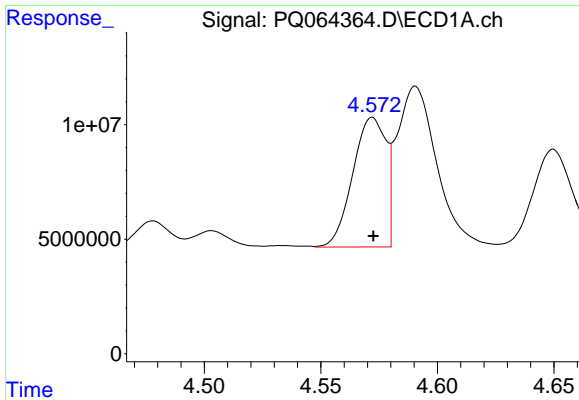
#2 Decachlorobiphenyl

R.T.: 8.692 min  
 Delta R.T.: 0.000 min  
 Response: 135232972  
 Conc: 46.13 ng/ml



#2 Decachlorobiphenyl

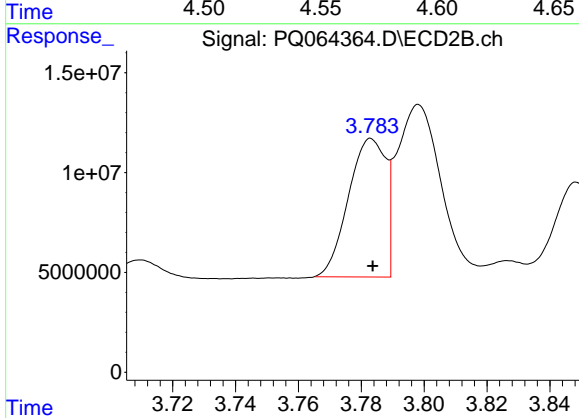
R.T.: 7.570 min  
 Delta R.T.: 0.000 min  
 Response: 215946068  
 Conc: 53.50 ng/ml



#3 AR-1016-1

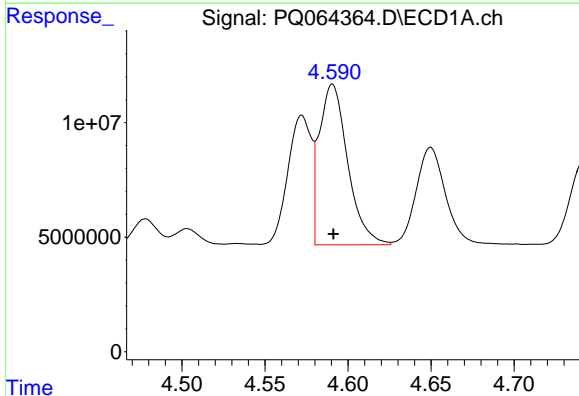
R.T.: 4.572 min  
 Delta R.T.: 0.000 min  
 Response: 55998399  
 Conc: 439.52 ng/ml

Instrument :  
 ECD\_Q  
 ClientSampleId :  
 AR1660CCC500



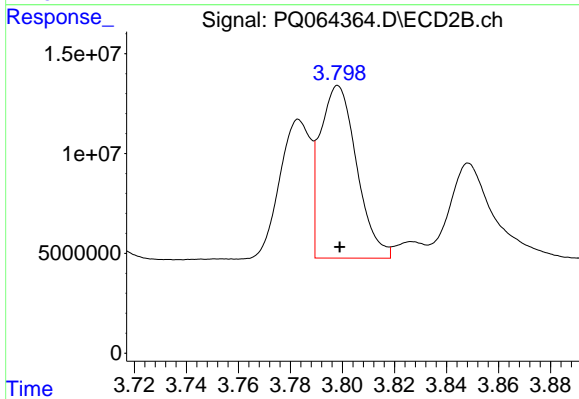
#3 AR-1016-1

R.T.: 3.783 min  
 Delta R.T.: 0.000 min  
 Response: 56742211  
 Conc: 466.86 ng/ml



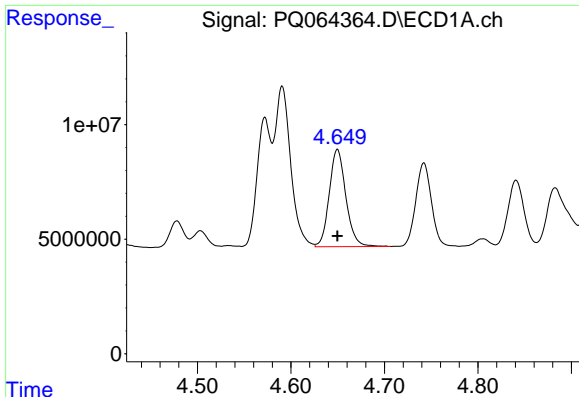
#4 AR-1016-2

R.T.: 4.591 min  
 Delta R.T.: 0.000 min  
 Response: 83423799  
 Conc: 434.63 ng/ml



#4 AR-1016-2

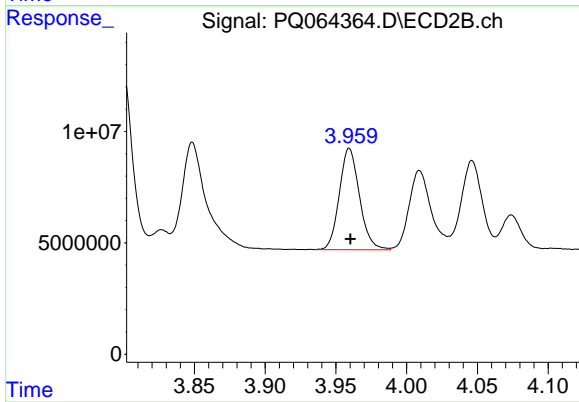
R.T.: 3.798 min  
 Delta R.T.: 0.000 min  
 Response: 84401153  
 Conc: 460.44 ng/ml



#5 AR-1016-3

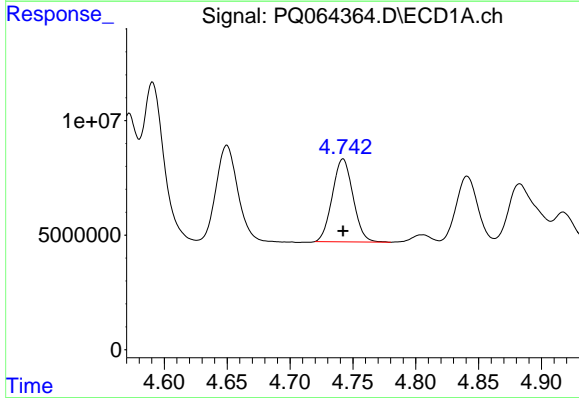
R.T.: 4.650 min  
 Delta R.T.: 0.000 min  
 Response: 52503554  
 Conc: 442.49 ng/ml

Instrument :  
 ECD\_Q  
 ClientSampleId :  
 AR1660CCC500



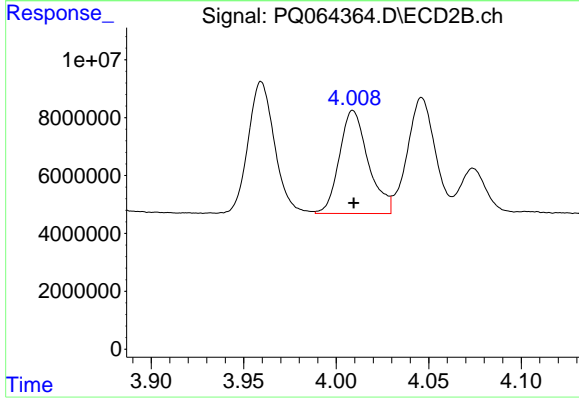
#5 AR-1016-3

R.T.: 3.959 min  
 Delta R.T.: 0.000 min  
 Response: 45151093  
 Conc: 464.01 ng/ml



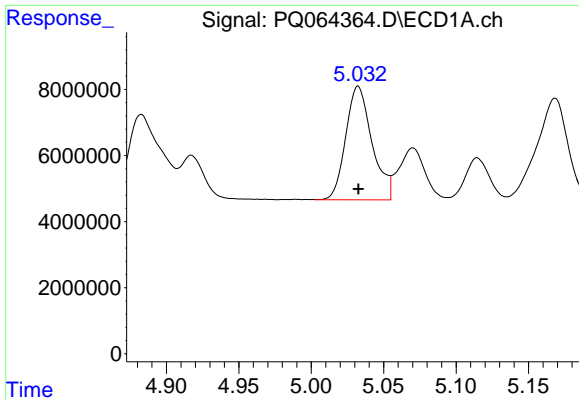
#6 AR-1016-4

R.T.: 4.742 min  
 Delta R.T.: 0.000 min  
 Response: 41470843  
 Conc: 446.49 ng/ml



#6 AR-1016-4

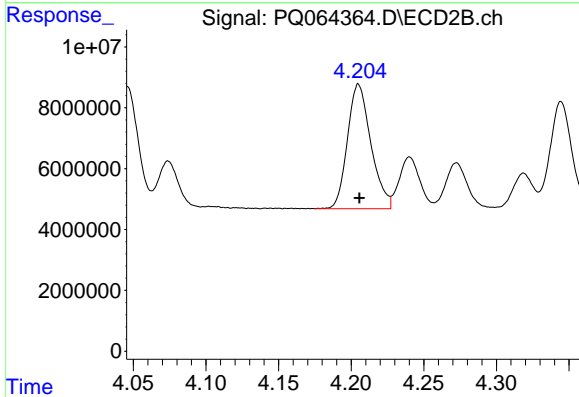
R.T.: 4.009 min  
 Delta R.T.: 0.000 min  
 Response: 38669345  
 Conc: 463.04 ng/ml



#7 AR-1016-5

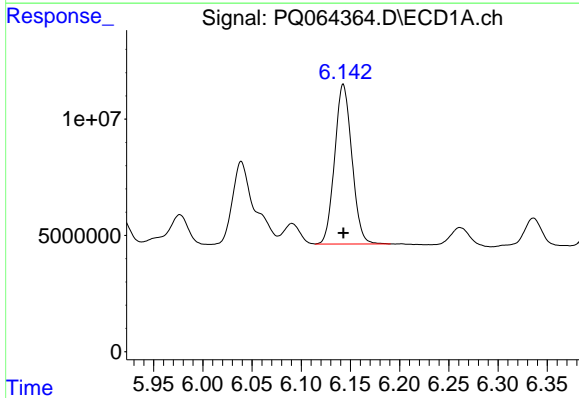
R.T.: 5.032 min  
 Delta R.T.: 0.000 min  
 Response: 43403363  
 Conc: 445.50 ng/ml

Instrument :  
 ECD\_Q  
 ClientSampleId :  
 AR1660CCC500



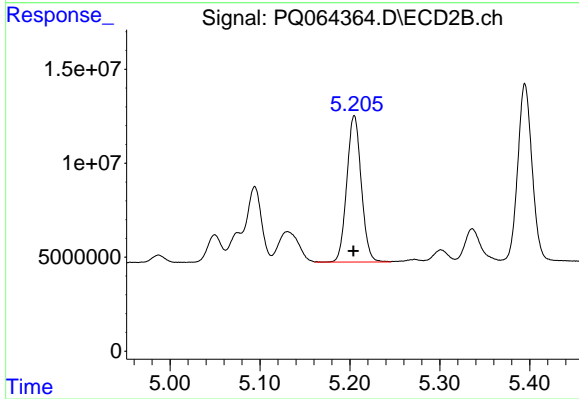
#7 AR-1016-5

R.T.: 4.205 min  
 Delta R.T.: 0.000 min  
 Response: 46064933  
 Conc: 455.01 ng/ml



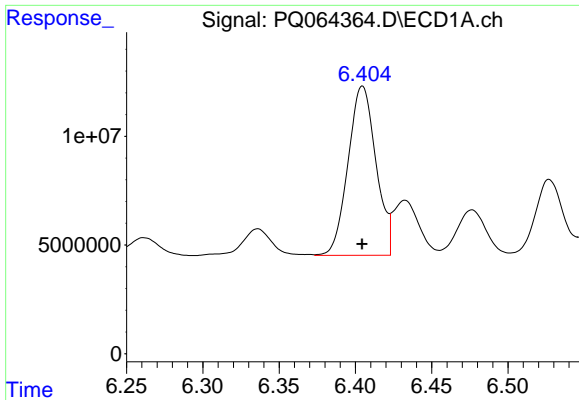
#31 AR-1260-1

R.T.: 6.143 min  
 Delta R.T.: 0.000 min  
 Response: 83693277  
 Conc: 446.91 ng/ml



#31 AR-1260-1

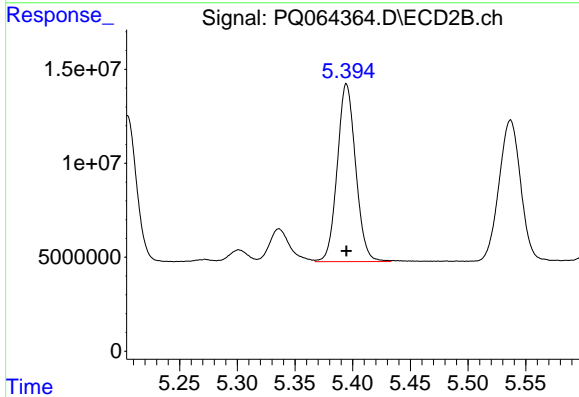
R.T.: 5.205 min  
 Delta R.T.: 0.000 min  
 Response: 87154923  
 Conc: 450.67 ng/ml



#32 AR-1260-2

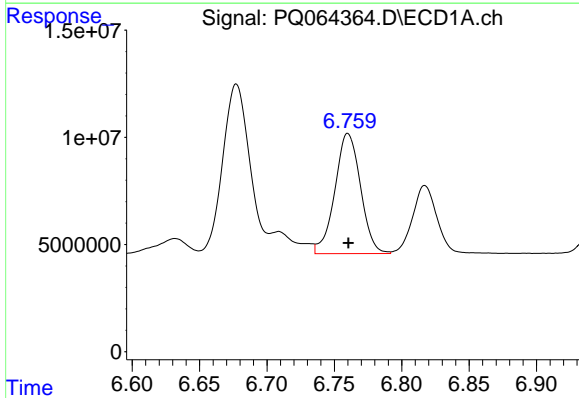
R.T.: 6.405 min  
 Delta R.T.: 0.000 min  
 Response: 98997445  
 Conc: 456.63 ng/ml

Instrument :  
 ECD\_Q  
 ClientSampleId :  
 AR1660CCC500



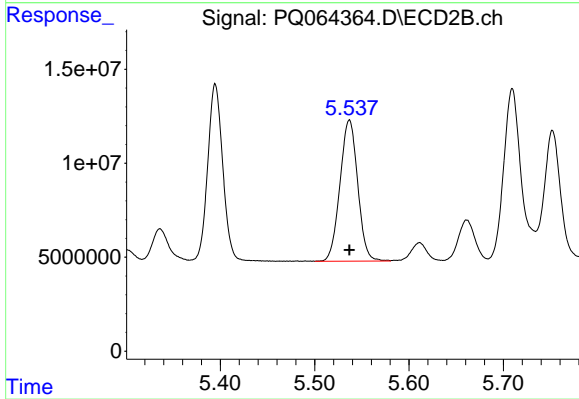
#32 AR-1260-2

R.T.: 5.395 min  
 Delta R.T.: 0.000 min  
 Response: 104915138  
 Conc: 450.81 ng/ml



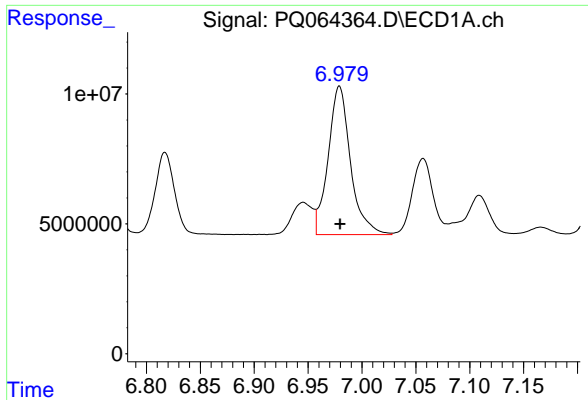
#33 AR-1260-3

R.T.: 6.760 min  
 Delta R.T.: 0.000 min  
 Response: 74499360  
 Conc: 457.07 ng/ml



#33 AR-1260-3

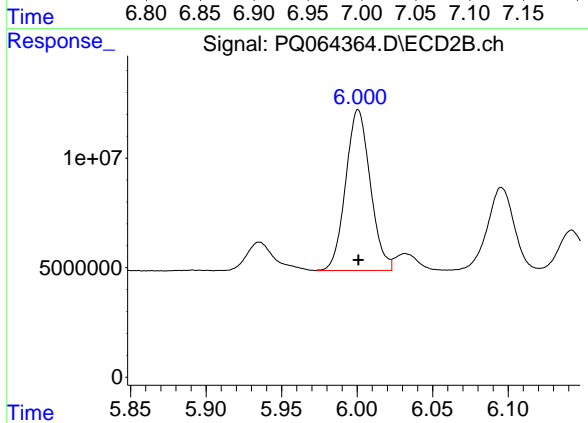
R.T.: 5.537 min  
 Delta R.T.: 0.000 min  
 Response: 98191978  
 Conc: 451.73 ng/ml



#34 AR-1260-4

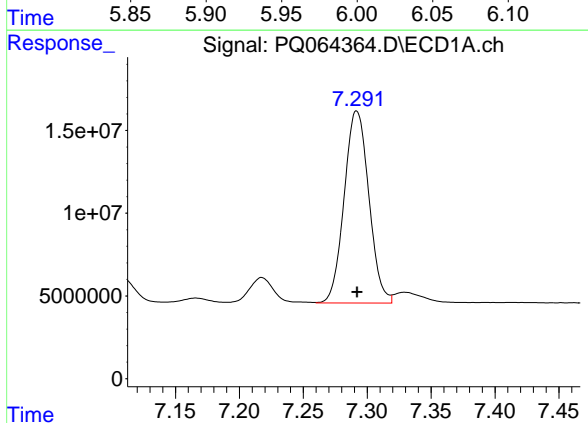
R.T.: 6.979 min  
 Delta R.T.: 0.000 min  
 Response: 82541454  
 Conc: 481.16 ng/ml

Instrument :  
 ECD\_Q  
 ClientSampleId :  
 AR1660CCC500



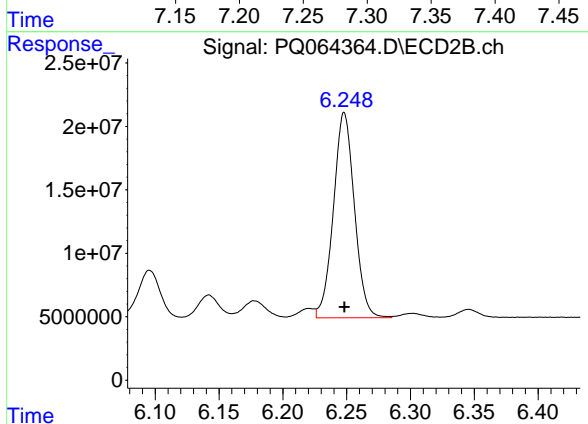
#34 AR-1260-4

R.T.: 6.001 min  
 Delta R.T.: 0.000 min  
 Response: 83281226  
 Conc: 452.13 ng/ml



#35 AR-1260-5

R.T.: 7.292 min  
 Delta R.T.: 0.000 min  
 Response: 156189782  
 Conc: 462.29 ng/ml



#35 AR-1260-5

R.T.: 6.248 min  
 Delta R.T.: 0.000 min  
 Response: 185200440  
 Conc: 427.10 ng/ml