

Data Path : Z:\pestpcbsrv\HPCHEM1\ECD\_Q\Data\PQ121123\  
 Data File : PQ064384.D  
 Signal(s) : Signal #1: ECD1A.ch Signal #2: ECD2B.ch  
 Acq On : 11 Dec 2023 17:23  
 Operator : YP\AJ  
 Sample : 05726-01  
 Misc :  
 ALS Vial : 25 Sample Multiplier: 1

Instrument :  
 ECD\_Q  
 ClientSampleId :  
 WC-1

Integration File signal 1: autoint1.e  
 Integration File signal 2: autoint2.e  
 Quant Time: Dec 12 00:00:47 2023  
 Quant Method : Z:\pestpcbsrv\HPCHEM1\ECD\_Q\Method\PQ120823.M  
 Quant Title : GC EXTRACTABLES  
 QLast Update : Sat Dec 09 05:18:21 2023  
 Response via : Initial Calibration  
 Integrator: ChemStation

Volume Inj. : 2 µl  
 Signal #1 Phase : ZB-MR1 Signal #2 Phase: ZB-MR2  
 Signal #1 Info : 30Mx0.32mmx 0.50µ Signal #2 Info : 30M x 0.32mm x 0.25µm

Compound	RT#1	RT#2	Resp#1	Resp#2	ng/ml	ng/ml
-----						
System Monitoring Compounds						
1) SA Tetrachlo...	3.457	2.773	84387794	96285460	20.341	22.934
2) SA Decachlor...	8.692	7.570	53180398	75320427	18.141	18.661

Target Compounds

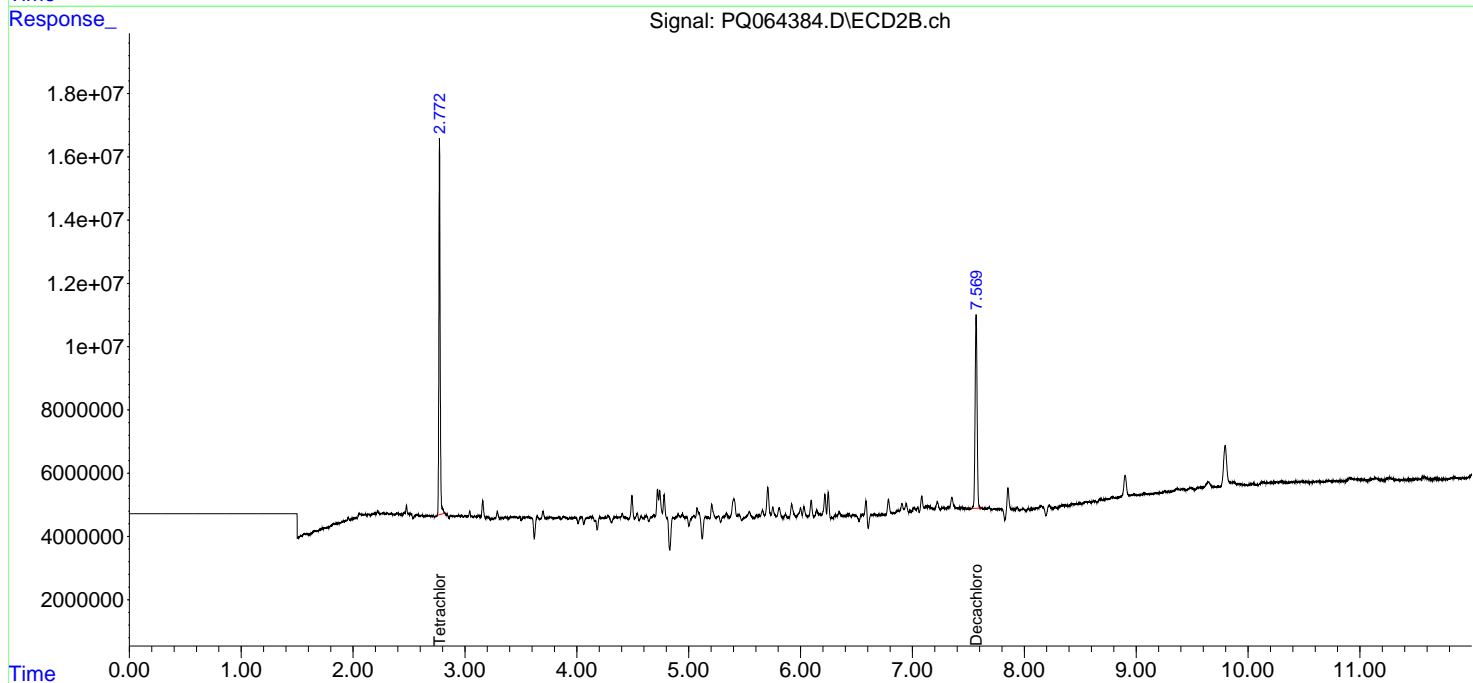
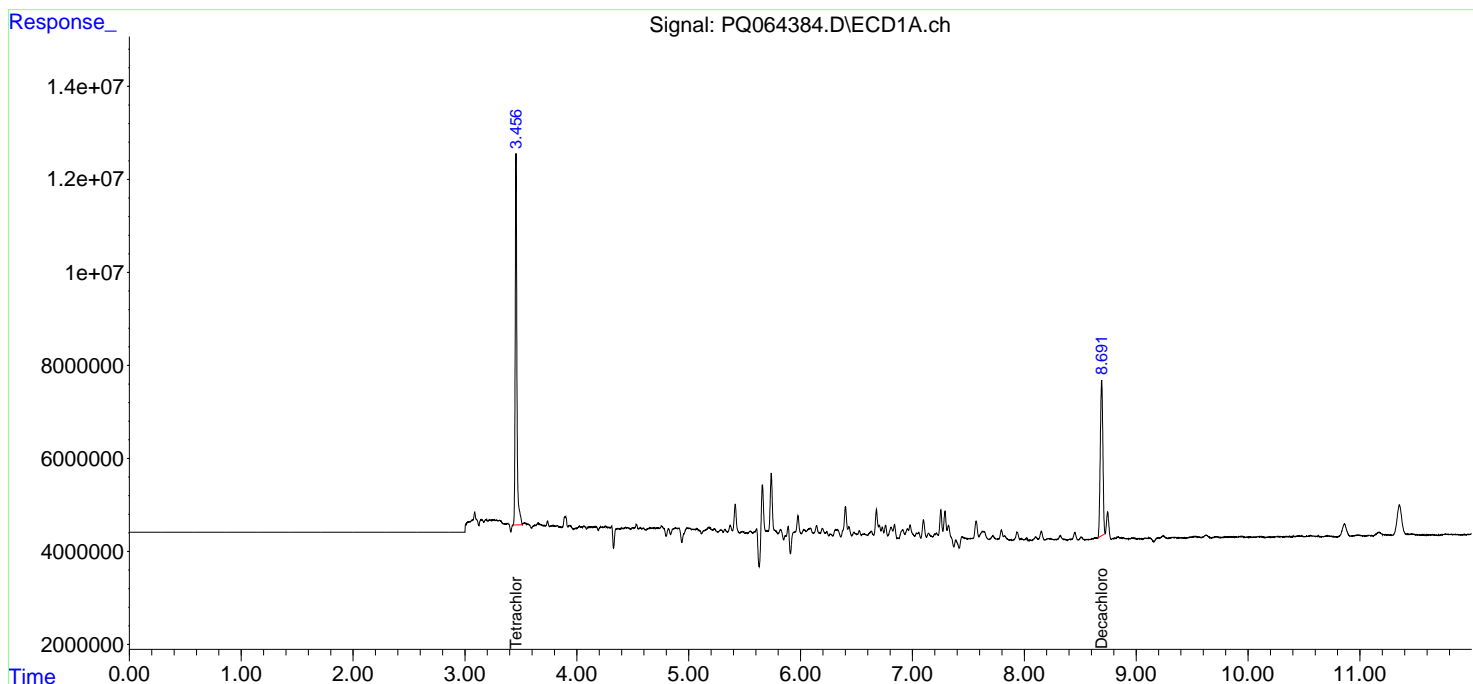
(f)=RT Delta > 1/2 Window (#)=Amounts differ by > 25% (m)=manual int.

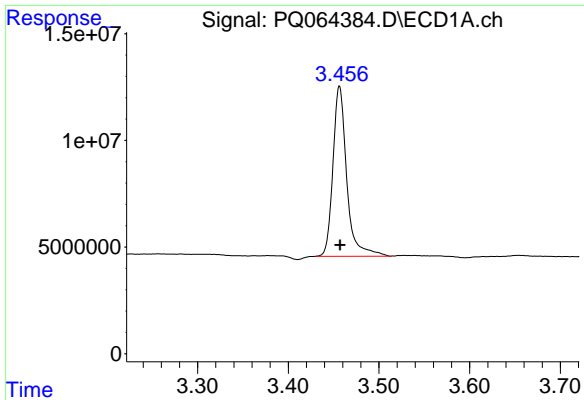
Data Path : Z:\pestpcbsrv\HPCHEM1\ECD\_Q\Data\PQ121123\  
 Data File : PQ064384.D  
 Signal(s) : Signal #1: ECD1A.ch Signal #2: ECD2B.ch  
 Acq On : 11 Dec 2023 17:23  
 Operator : YP\AJ  
 Sample : 05726-01  
 Misc :  
 ALS Vial : 25 Sample Multiplier: 1

Instrument :  
 ECD\_Q  
 ClientSampleId :  
 WC-1

Integration File signal 1: autoint1.e  
 Integration File signal 2: autoint2.e  
 Quant Time: Dec 12 00:00:47 2023  
 Quant Method : Z:\pestpcbsrv\HPCHEM1\ECD\_Q\Method\PQ120823.M  
 Quant Title : GC EXTRACTABLES  
 QLast Update : Sat Dec 09 05:18:21 2023  
 Response via : Initial Calibration  
 Integrator: ChemStation

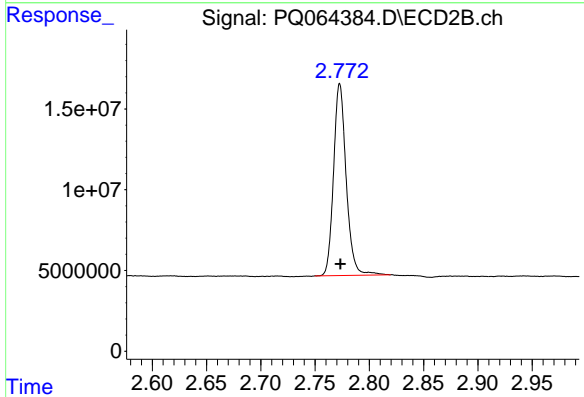
Volume Inj. : 2 µl  
 Signal #1 Phase : ZB-MR1 Signal #2 Phase: ZB-MR2  
 Signal #1 Info : 30Mx0.32mmx 0.50µ Signal #2 Info : 30M x 0.32mm x 0.25µm



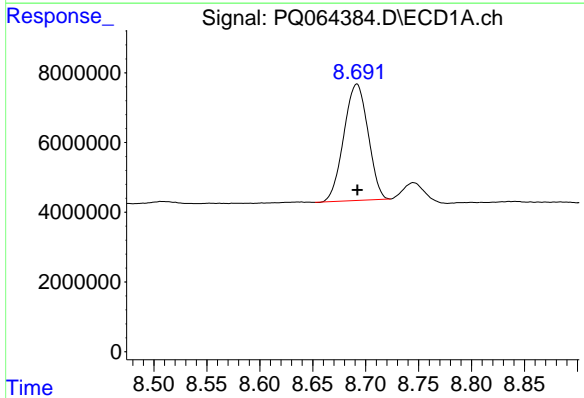


#1 Tetrachloro-m-xylene  
 R.T.: 3.457 min  
 Delta R.T.: 0.000 min  
 Response: 84387794  
 Conc: 20.34 ng/ml

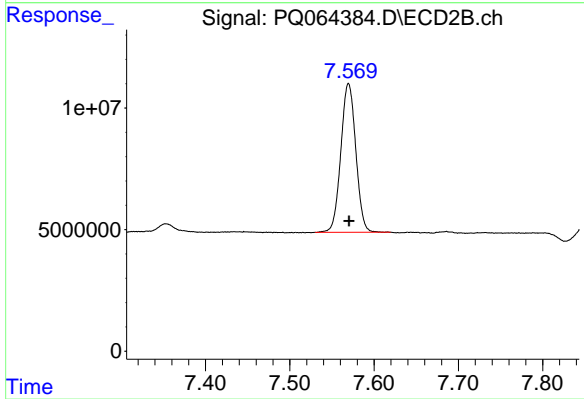
Instrument :  
 ECD\_Q  
 ClientSampleId :  
 WC-1



#1 Tetrachloro-m-xylene  
 R.T.: 2.773 min  
 Delta R.T.: 0.000 min  
 Response: 96285460  
 Conc: 22.93 ng/ml



#2 Decachlorobiphenyl  
 R.T.: 8.692 min  
 Delta R.T.: 0.000 min  
 Response: 53180398  
 Conc: 18.14 ng/ml



#2 Decachlorobiphenyl  
 R.T.: 7.570 min  
 Delta R.T.: 0.000 min  
 Response: 75320427  
 Conc: 18.66 ng/ml