

Data Path : Z:\pestpcbsrv\HPCHEM1\ECD_Q\Data\PQ121323\
 Data File : PQ064468.D
 Signal(s) : Signal #1: ECD1A.ch Signal #2: ECD2B.ch
 Acq On : 13 Dec 2023 10:20
 Operator : YP\AJ
 Sample : I.BLK
 Misc :
 ALS Vial : 2 Sample Multiplier: 1

Instrument :
 ECD_Q
 ClientSampleId :
 I.BLK

Integration File signal 1: autoint1.e
 Integration File signal 2: autoint2.e
 Quant Time: Dec 13 16:28:15 2023
 Quant Method : Z:\pestpcbsrv\HPCHEM1\ECD_Q\Method\PQ120823.M
 Quant Title : GC EXTRACTABLES
 QLast Update : Sat Dec 09 05:18:21 2023
 Response via : Initial Calibration
 Integrator: ChemStation

Volume Inj. : 2 µl
 Signal #1 Phase : ZB-MR1 Signal #2 Phase: ZB-MR2
 Signal #1 Info : 30Mx0.32mmx 0.50µ Signal #2 Info : 30M x 0.32mm x 0.25µm

Compound	RT#1	RT#2	Resp#1	Resp#2	ng/ml	ng/ml

System Monitoring Compounds						
1) SA Tetrachlo...	3.467	2.773	76674536	94088063	18.482	22.410
2) SA Decachlor...	8.706	7.574	63202620	100.2E6	21.560	24.814

Target Compounds

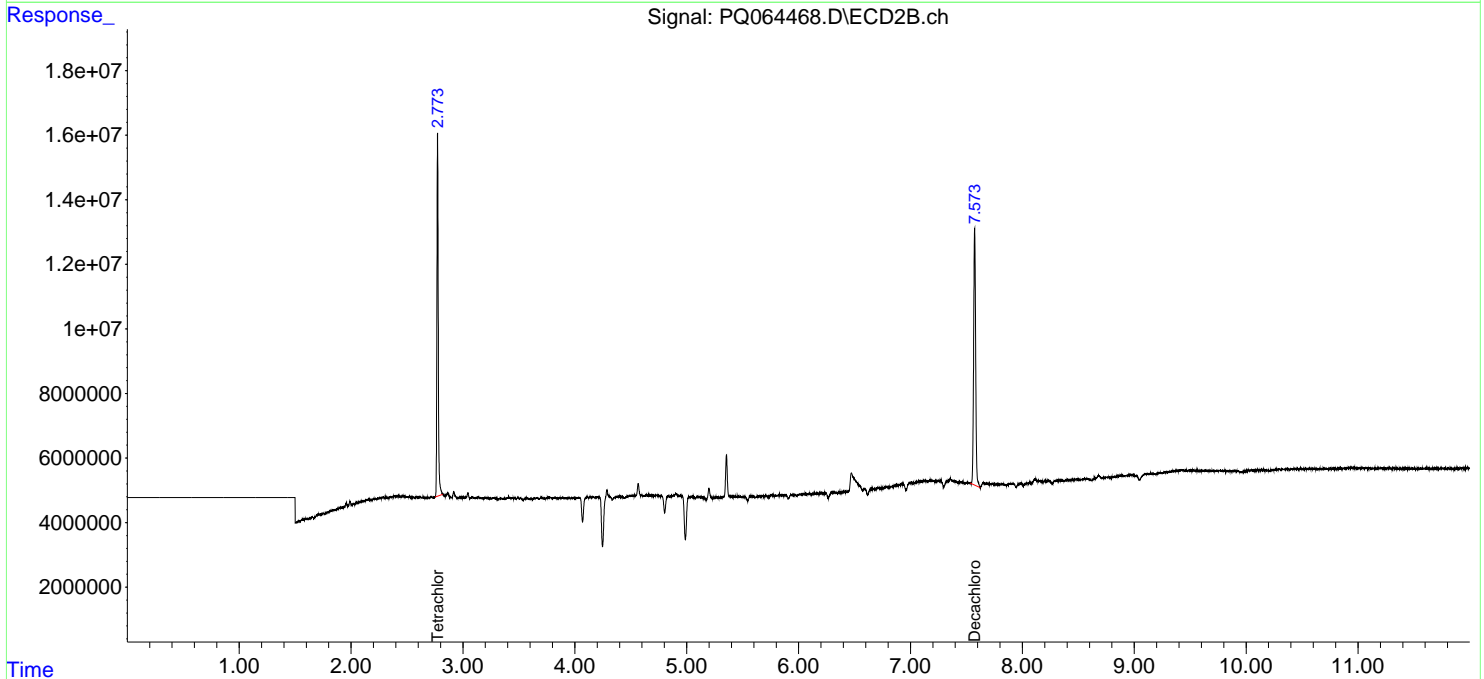
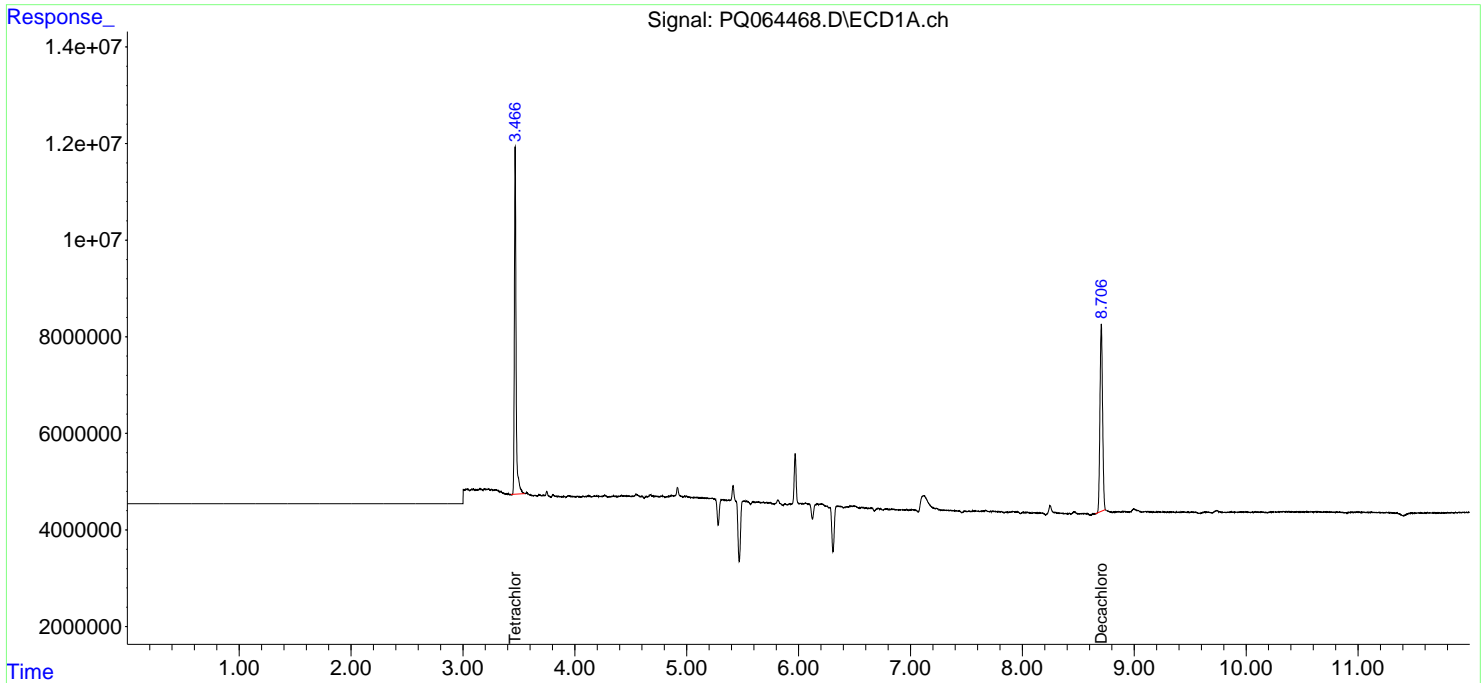
(f)=RT Delta > 1/2 Window (#)=Amounts differ by > 25% (m)=manual int.

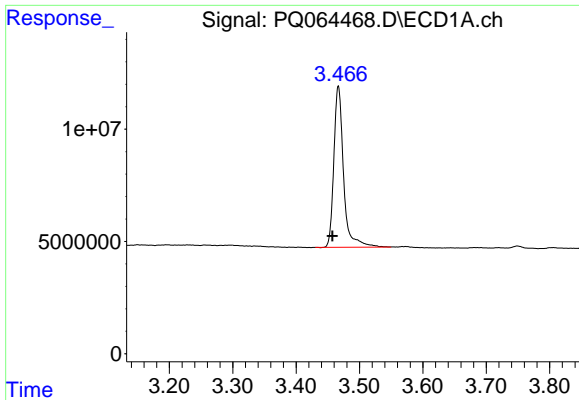
Data Path : Z:\pestpcbsrv\HPCHEM1\ECD_Q\Data\PQ121323\
 Data File : PQ064468.D
 Signal(s) : Signal #1: ECD1A.ch Signal #2: ECD2B.ch
 Acq On : 13 Dec 2023 10:20
 Operator : YP\AJ
 Sample : I.BLK
 Misc :
 ALS Vial : 2 Sample Multiplier: 1

Instrument :
 ECD_Q
 ClientSampleId :
 I.BLK

Integration File signal 1: autoint1.e
 Integration File signal 2: autoint2.e
 Quant Time: Dec 13 16:28:15 2023
 Quant Method : Z:\pestpcbsrv\HPCHEM1\ECD_Q\Method\PQ120823.M
 Quant Title : GC EXTRACTABLES
 QLast Update : Sat Dec 09 05:18:21 2023
 Response via : Initial Calibration
 Integrator: ChemStation

Volume Inj. : 2 µl
 Signal #1 Phase : ZB-MR1 Signal #2 Phase: ZB-MR2
 Signal #1 Info : 30Mx0.32mmx 0.50µ Signal #2 Info : 30M x 0.32mm x 0.25µm

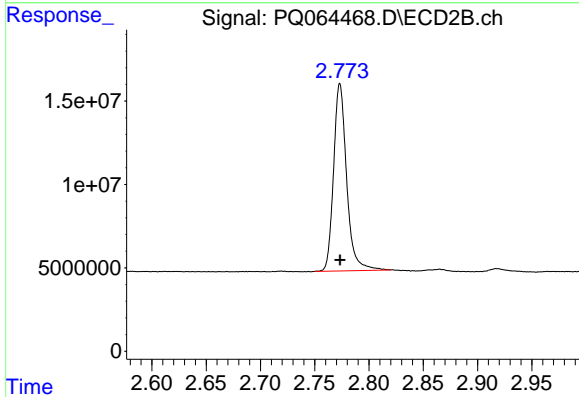




#1 Tetrachloro-m-xylene

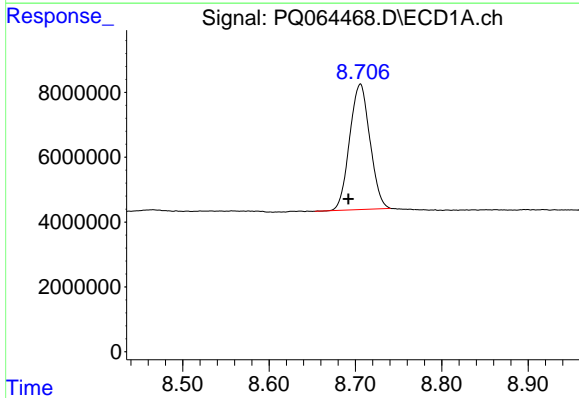
R.T.: 3.467 min
Delta R.T.: 0.010 min
Response: 76674536
Conc: 18.48 ng/ml

Instrument :
ECD_Q
ClientSampleId :
I.BLK



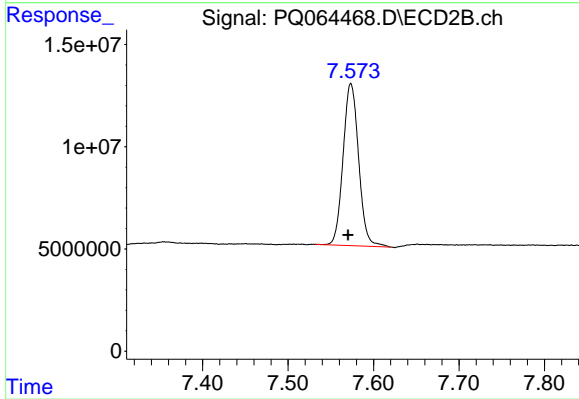
#1 Tetrachloro-m-xylene

R.T.: 2.773 min
Delta R.T.: 0.000 min
Response: 94088063
Conc: 22.41 ng/ml



#2 Decachlorobiphenyl

R.T.: 8.706 min
Delta R.T.: 0.013 min
Response: 63202620
Conc: 21.56 ng/ml



#2 Decachlorobiphenyl

R.T.: 7.574 min
Delta R.T.: 0.003 min
Response: 100154223
Conc: 24.81 ng/ml