

Data Path : Z:\pestpcbsrv\HPCHEM1\ECD\_Q\Data\PQ121323\  
 Data File : PQ064512.D  
 Signal(s) : Signal #1: ECD1A.ch Signal #2: ECD2B.ch  
 Acq On : 14 Dec 2023 04:15  
 Operator : YP\AJ  
 Sample : AR1660CCC500  
 Misc :  
 ALS Vial : 3 Sample Multiplier: 1

**Instrument :**  
 ECD\_Q  
**ClientSampleId :**  
 AR1660CCC500

**Manual Integrations**  
**APPROVED**

Reviewed By :Yogesh Patel 12/14/2023  
 Supervised By :Ankita Jodhani 12/14/2023

Integration File signal 1: autoint1.e  
 Integration File signal 2: autoint2.e  
 Quant Time: Dec 14 05:03:08 2023  
 Quant Method : Z:\pestpcbsrv\HPCHEM1\ECD\_Q\Method\PQ120823.M  
 Quant Title : GC EXTRACTABLES  
 QLast Update : Sat Dec 09 05:18:21 2023  
 Response via : Initial Calibration  
 Integrator: ChemStation

Volume Inj. : 2 µl  
 Signal #1 Phase : ZB-MR1 Signal #2 Phase: ZB-MR2  
 Signal #1 Info : 30Mx0.32mmx 0.50µ Signal #2 Info : 30M x 0.32mm x 0.25µm

Compound	RT#1	RT#2	Resp#1	Resp#2	ng/ml	ng/ml
-----						
System Monitoring Compounds						
1) SA Tetrachlo...	3.457	2.772	185.4E6	237.5E6	44.695	56.566m#
2) SA Decachlor...	8.689	7.566	139.0E6	208.6E6	47.432	51.678
Target Compounds						
3) L1 AR-1016-1	4.571	3.782	58046983	66368564	455.603	546.064
4) L1 AR-1016-2	4.590	3.797	87735025	100.4E6	457.095	547.449
5) L1 AR-1016-3	4.649	3.958	55088999	53645874	464.283	551.308
6) L1 AR-1016-4	4.742	4.008	43140548	45551719	464.468	545.446
7) L1 AR-1016-5	5.032	4.203	45990651	54872693	472.054	542.010
31) L7 AR-1260-1	6.142	5.202	86708540	99185739	463.010	512.878
32) L7 AR-1260-2	6.403	5.393	103.9E6	118.7E6	479.045	509.952
33) L7 AR-1260-3	6.759	5.535	78097410	111.7E6	479.147	513.932
34) L7 AR-1260-4	6.978	5.999	84969716	100.4E6	495.310	545.243
35) L7 AR-1260-5	7.290	6.246	161.6E6	245.7E6	478.156	566.552

(f)=RT Delta > 1/2 Window (#)=Amounts differ by > 25% (m)=manual int.

Data Path : Z:\pestpcbsrv\HPCHEM1\ECD\_Q\Data\PQ121323\  
 Data File : PQ064512.D  
 Signal(s) : Signal #1: ECD1A.ch Signal #2: ECD2B.ch  
 Acq On : 14 Dec 2023 04:15  
 Operator : YP\AJ  
 Sample : AR1660CCC500  
 Misc :  
 ALS Vial : 3 Sample Multiplier: 1

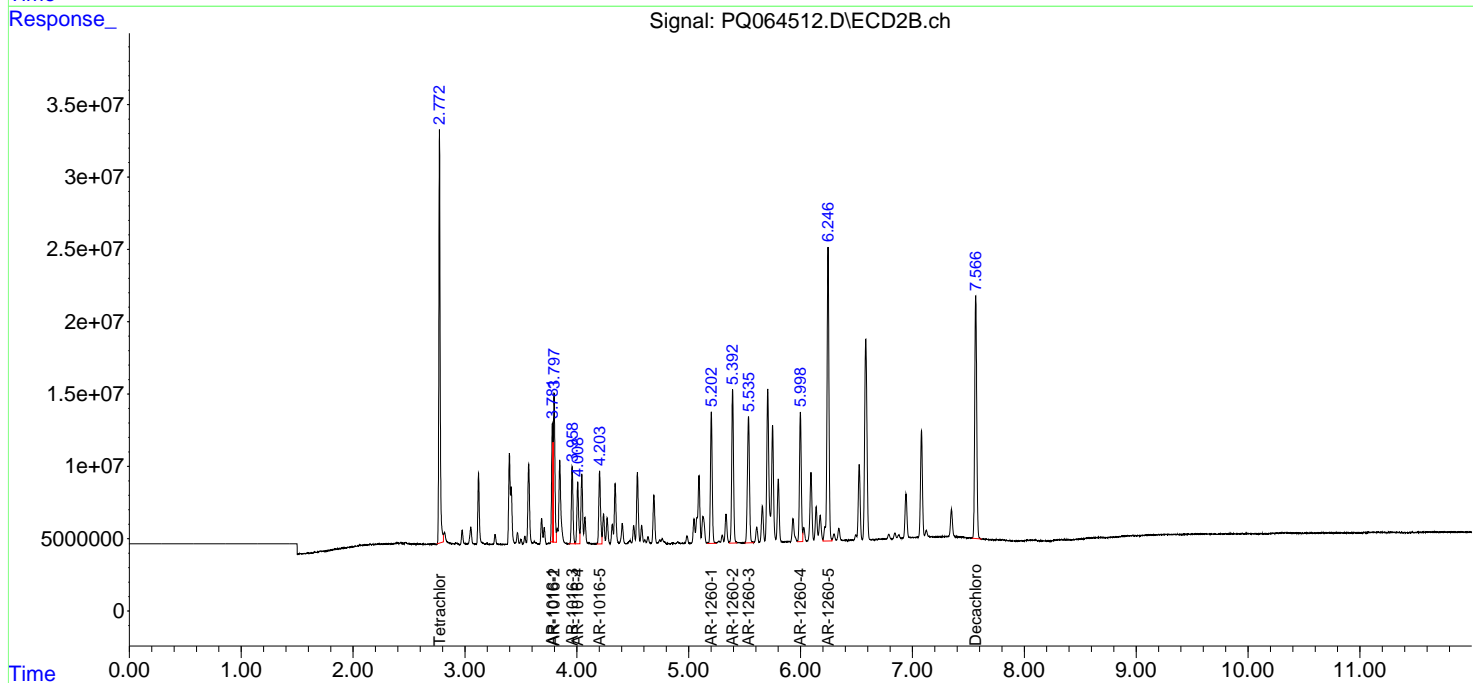
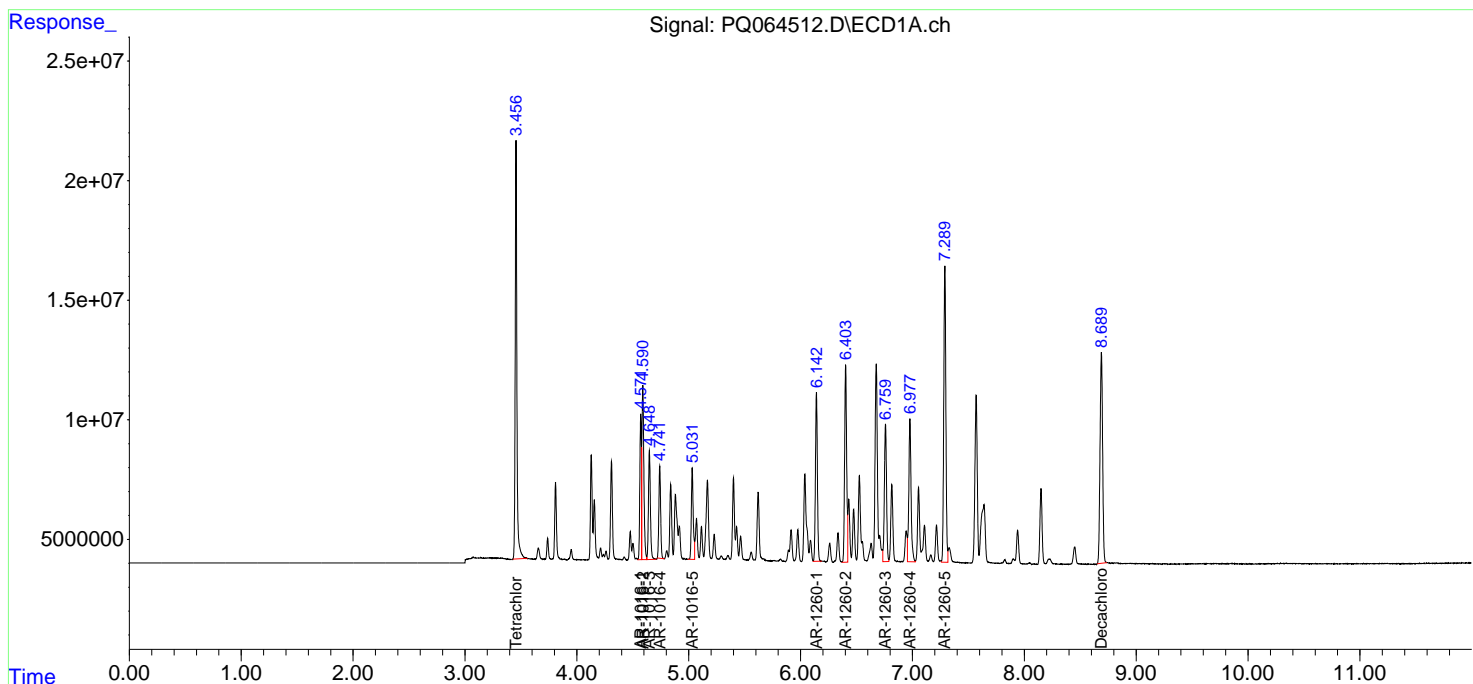
Instrument :  
 ECD\_Q  
 ClientSampleId :  
 AR1660CCC500

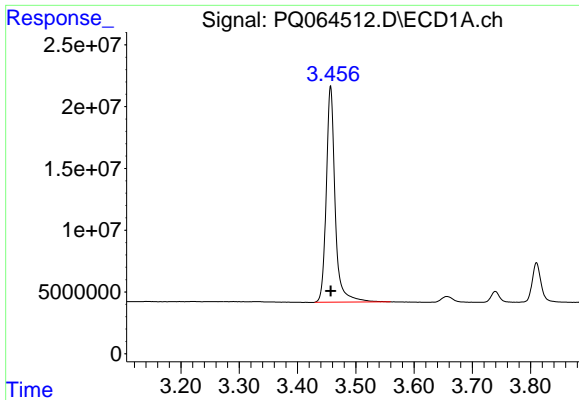
Manual Integrations  
 APPROVED

Reviewed By :Yogesh Patel 12/14/2023  
 Supervised By :Ankita Jodhani 12/14/2023

Integration File signal 1: autoint1.e  
 Integration File signal 2: autoint2.e  
 Quant Time: Dec 14 05:03:08 2023  
 Quant Method : Z:\pestpcbsrv\HPCHEM1\ECD\_Q\Method\PQ120823.M  
 Quant Title : GC EXTRACTABLES  
 QLast Update : Sat Dec 09 05:18:21 2023  
 Response via : Initial Calibration  
 Integrator: ChemStation

Volume Inj. : 2 µl  
 Signal #1 Phase : ZB-MR1 Signal #2 Phase: ZB-MR2  
 Signal #1 Info : 30Mx0.32mmx 0.50µ Signal #2 Info : 30M x 0.32mm x 0.25µm





#1 Tetrachloro-m-xylene

R.T.: 3.457 min  
 Delta R.T.: 0.000 min  
 Response: 185424562  
 Conc: 44.70 ng/ml

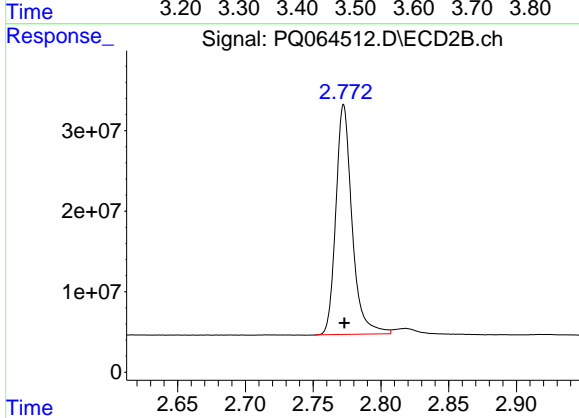
Instrument :

ECD\_Q

Client Sample Id :  
 AR1660CCC500

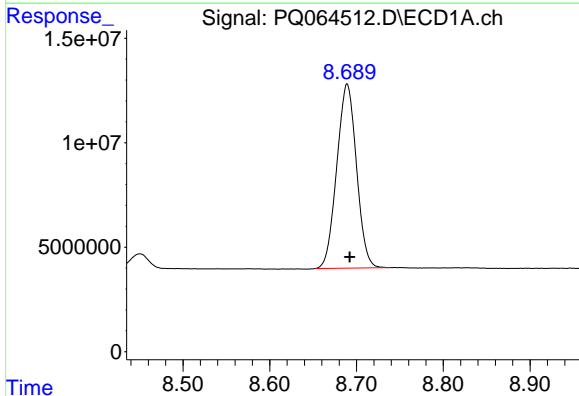
Manual Integrations  
 APPROVED

Reviewed By :Yogesh Patel 12/14/2023  
 Supervised By :Ankita Jodhani 12/14/2023



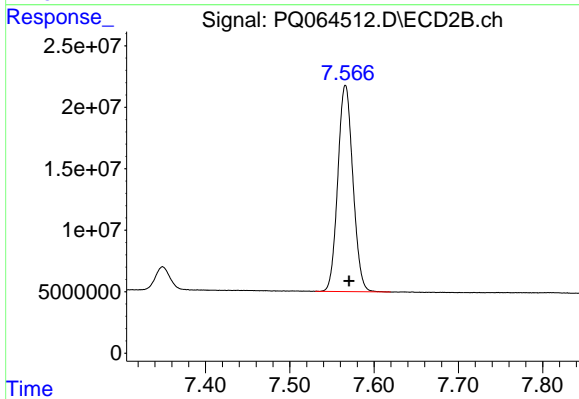
#1 Tetrachloro-m-xylene

R.T.: 2.772 min  
 Delta R.T.: -0.001 min  
 Response: 237485722  
 Conc: 56.57 ng/ml m



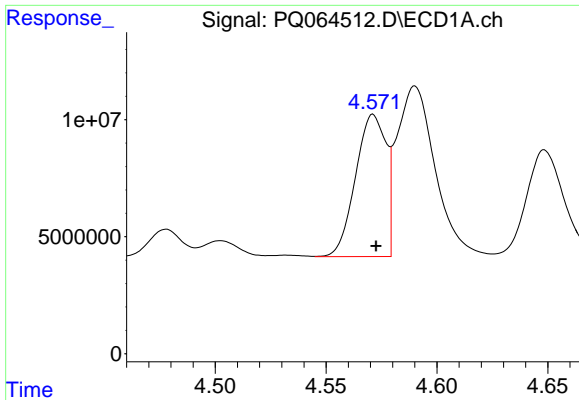
#2 Decachlorobiphenyl

R.T.: 8.689 min  
 Delta R.T.: -0.003 min  
 Response: 139045140  
 Conc: 47.43 ng/ml



#2 Decachlorobiphenyl

R.T.: 7.566 min  
 Delta R.T.: -0.004 min  
 Response: 208583568  
 Conc: 51.68 ng/ml



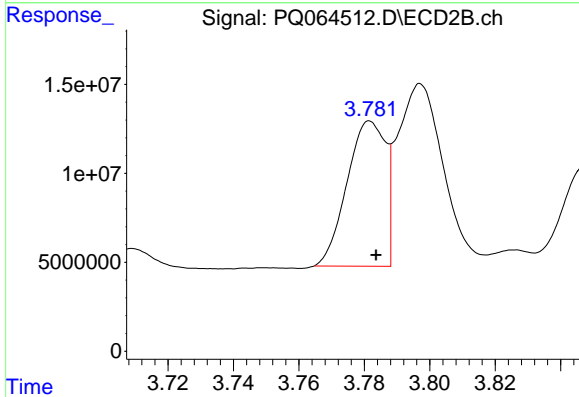
#3 AR-1016-1

R.T.: 4.571 min  
 Delta R.T.: -0.001 min  
 Response: 58046983  
 Conc: 455.60 ng/ml

Instrument :  
 ECD\_Q  
 ClientSampleId :  
 AR1660CCC500

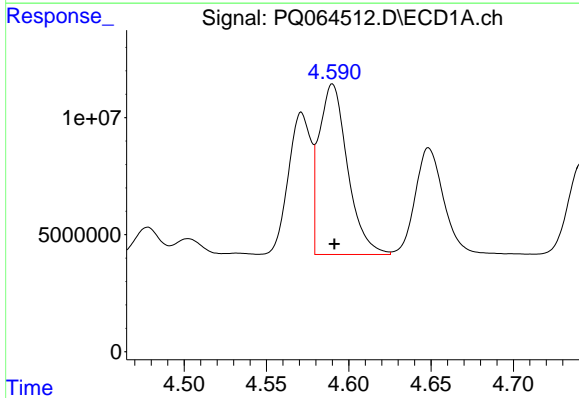
Manual Integrations  
 APPROVED

Reviewed By :Yogesh Patel 12/14/2023  
 Supervised By :Ankita Jodhani 12/14/2023



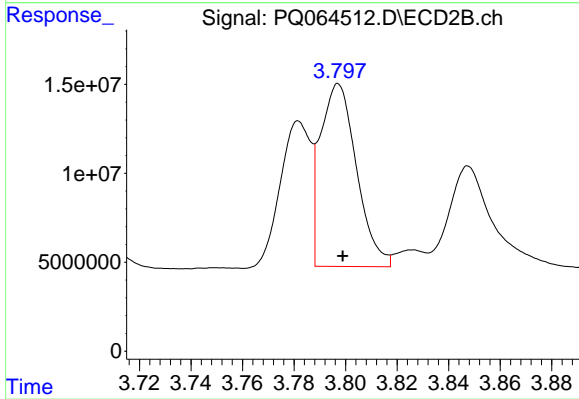
#3 AR-1016-1

R.T.: 3.782 min  
 Delta R.T.: -0.002 min  
 Response: 66368564  
 Conc: 546.06 ng/ml



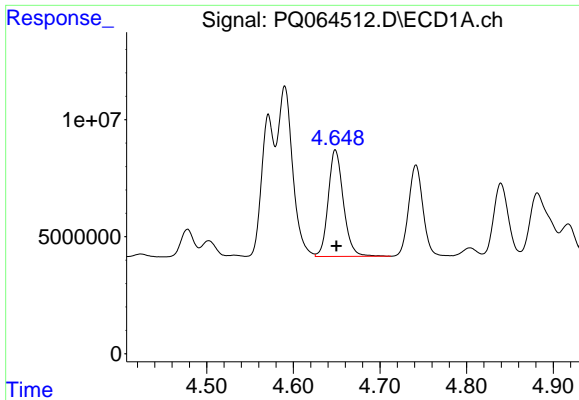
#4 AR-1016-2

R.T.: 4.590 min  
 Delta R.T.: -0.001 min  
 Response: 87735025  
 Conc: 457.10 ng/ml



#4 AR-1016-2

R.T.: 3.797 min  
 Delta R.T.: -0.002 min  
 Response: 100350226  
 Conc: 547.45 ng/ml



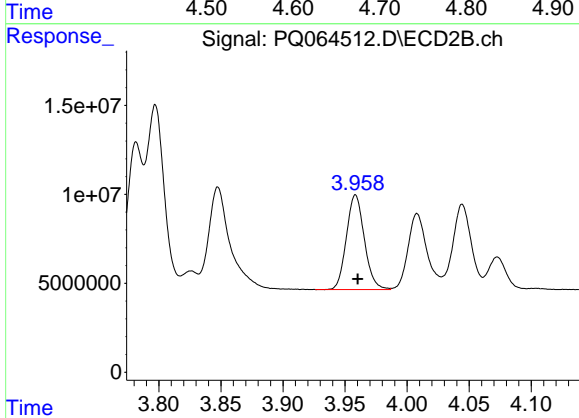
#5 AR-1016-3

R.T.: 4.649 min  
 Delta R.T.: -0.001 min  
 Response: 55088999  
 Conc: 464.28 ng/ml

Instrument :  
 ECD\_Q  
 ClientSampleId :  
 AR1660CCC500

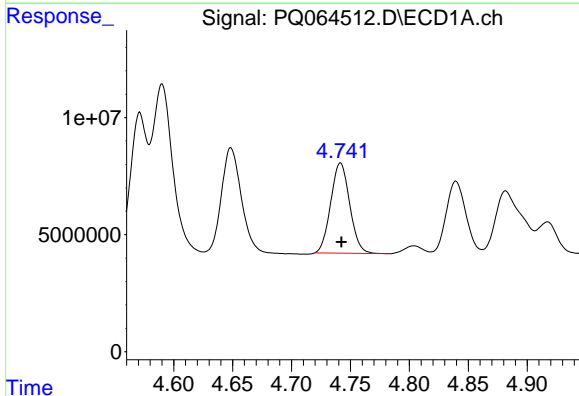
Manual Integrations  
 APPROVED

Reviewed By :Yogesh Patel 12/14/2023  
 Supervised By :Ankita Jodhani 12/14/2023



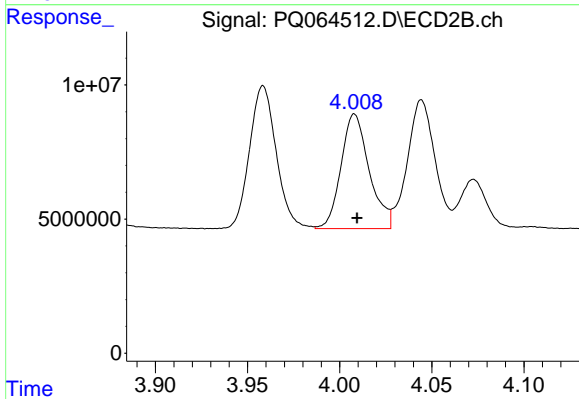
#5 AR-1016-3

R.T.: 3.958 min  
 Delta R.T.: -0.002 min  
 Response: 53645874  
 Conc: 551.31 ng/ml



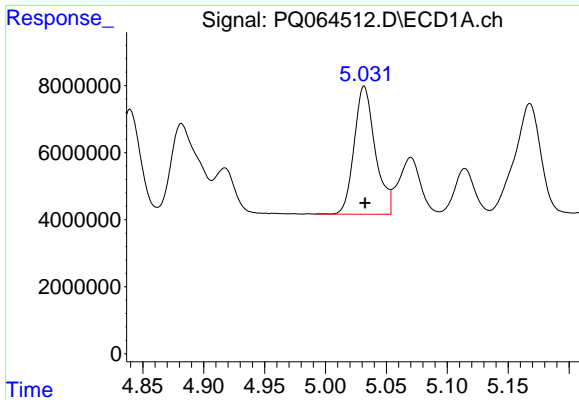
#6 AR-1016-4

R.T.: 4.742 min  
 Delta R.T.: 0.000 min  
 Response: 43140548  
 Conc: 464.47 ng/ml



#6 AR-1016-4

R.T.: 4.008 min  
 Delta R.T.: -0.001 min  
 Response: 45551719  
 Conc: 545.45 ng/ml



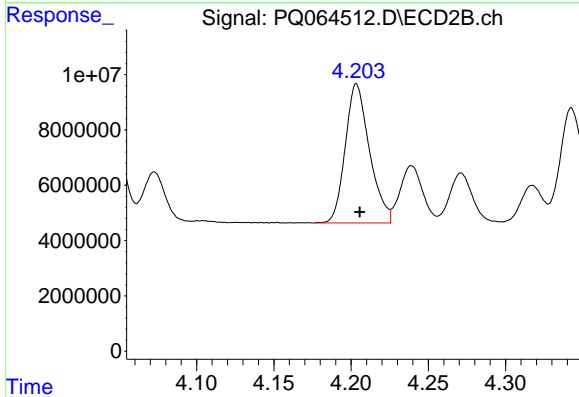
#7 AR-1016-5

R.T.: 5.032 min  
 Delta R.T.: 0.000 min  
 Response: 45990651  
 Conc: 472.05 ng/ml

Instrument :  
 ECD\_Q  
 ClientSampleId :  
 AR1660CCC500

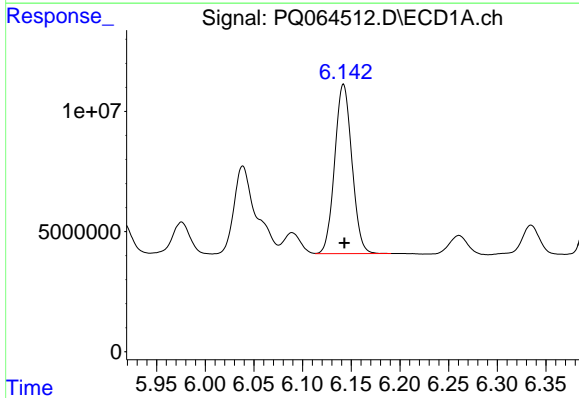
Manual Integrations  
 APPROVED

Reviewed By :Yogesh Patel 12/14/2023  
 Supervised By :Ankita Jodhani 12/14/2023



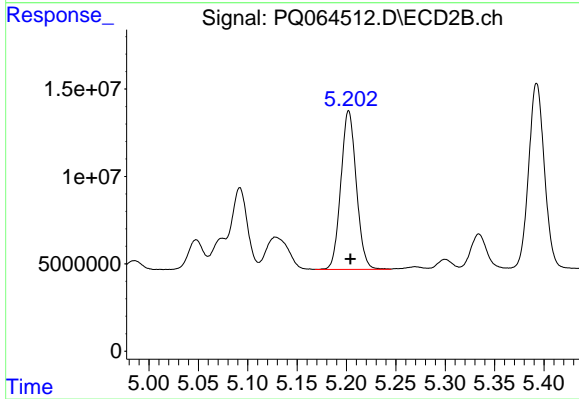
#7 AR-1016-5

R.T.: 4.203 min  
 Delta R.T.: -0.002 min  
 Response: 54872693  
 Conc: 542.01 ng/ml



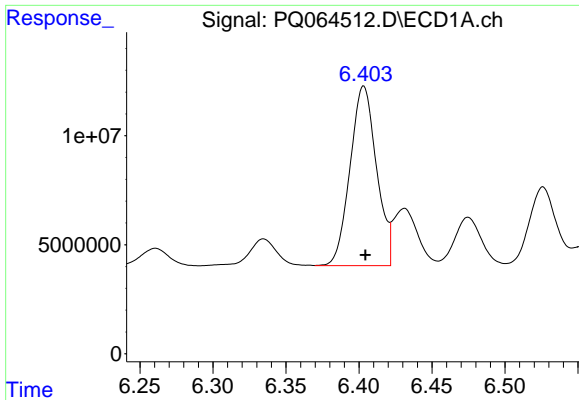
#31 AR-1260-1

R.T.: 6.142 min  
 Delta R.T.: 0.000 min  
 Response: 86708540  
 Conc: 463.01 ng/ml



#31 AR-1260-1

R.T.: 5.202 min  
 Delta R.T.: -0.002 min  
 Response: 99185739  
 Conc: 512.88 ng/ml



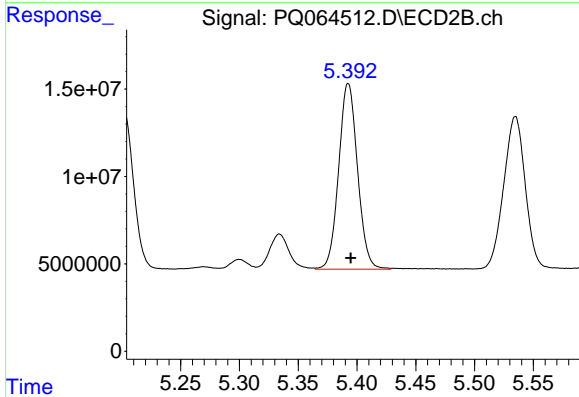
#32 AR-1260-2

R.T.: 6.403 min  
 Delta R.T.: -0.001 min  
 Response: 103856385  
 Conc: 479.04 ng/ml

Instrument :  
 ECD\_Q  
 ClientSampleId :  
 AR1660CCC500

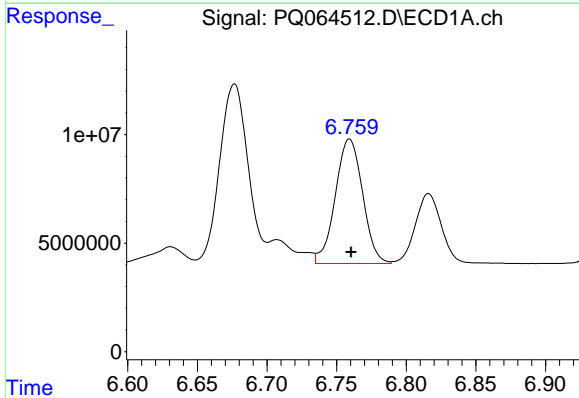
Manual Integrations  
 APPROVED

Reviewed By :Yogesh Patel 12/14/2023  
 Supervised By :Ankita Jodhani 12/14/2023



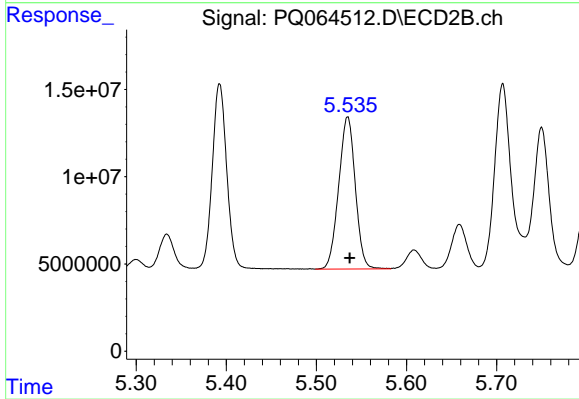
#32 AR-1260-2

R.T.: 5.393 min  
 Delta R.T.: -0.002 min  
 Response: 118679433  
 Conc: 509.95 ng/ml



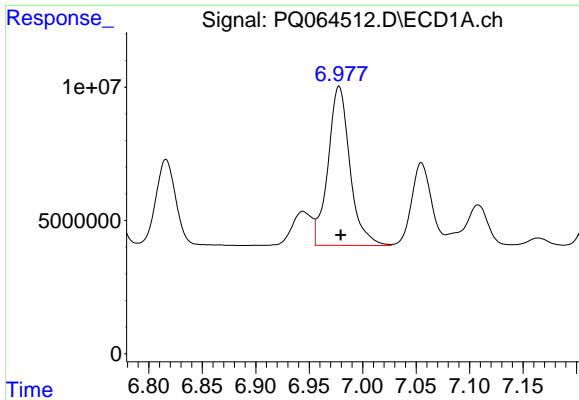
#33 AR-1260-3

R.T.: 6.759 min  
 Delta R.T.: -0.001 min  
 Response: 78097410  
 Conc: 479.15 ng/ml



#33 AR-1260-3

R.T.: 5.535 min  
 Delta R.T.: -0.002 min  
 Response: 111712457  
 Conc: 513.93 ng/ml



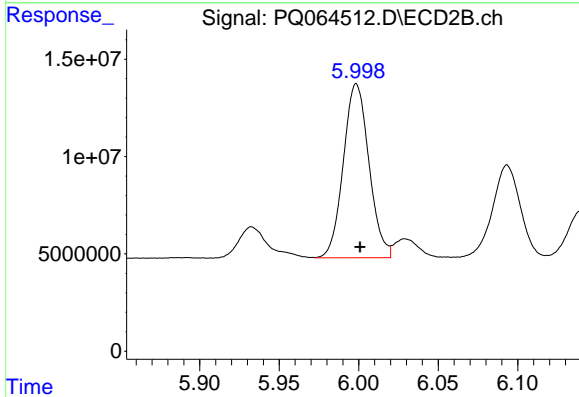
#34 AR-1260-4

R.T.: 6.978 min  
 Delta R.T.: -0.002 min  
 Response: 84969716  
 Conc: 495.31 ng/ml

Instrument :  
 ECD\_Q  
 ClientSampleId :  
 AR1660CCC500

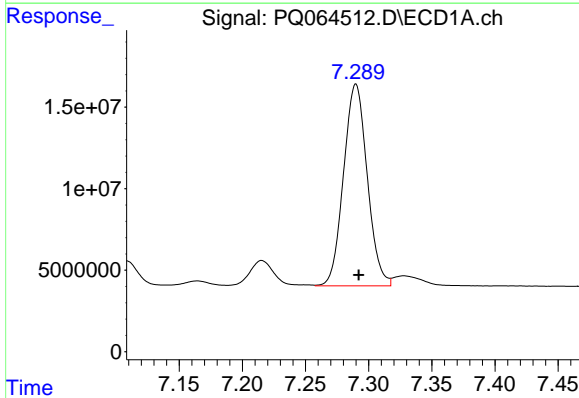
Manual Integrations  
 APPROVED

Reviewed By :Yogesh Patel 12/14/2023  
 Supervised By :Ankita Jodhani 12/14/2023



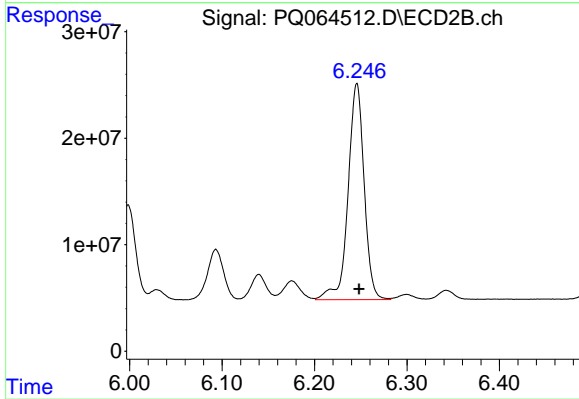
#34 AR-1260-4

R.T.: 5.999 min  
 Delta R.T.: -0.002 min  
 Response: 100432882  
 Conc: 545.24 ng/ml



#35 AR-1260-5

R.T.: 7.290 min  
 Delta R.T.: -0.002 min  
 Response: 161550111  
 Conc: 478.16 ng/ml



#35 AR-1260-5

R.T.: 6.246 min  
 Delta R.T.: -0.002 min  
 Response: 245671628  
 Conc: 566.55 ng/ml