

Data Path : Z:\pestpcbsrv\HPCHEM1\ECD\_Q\Data\PQ121324\  
 Data File : PQ069700.D  
 Signal(s) : Signal #1: ECD1A.ch Signal #2: ECD2B.ch  
 Acq On : 13 Dec 2024 20:20  
 Operator : YP\AJ  
 Sample : P5228-12  
 Misc :  
 ALS Vial : 36 Sample Multiplier: 1

Instrument :  
 ECD\_Q  
 ClientSampleId :  
 E2AT5

Integration File signal 1: autoint1.e  
 Integration File signal 2: autoint2.e  
 Quant Time: Dec 14 00:22:28 2024  
 Quant Method : Z:\pestpcbsrv\HPCHEM1\ECD\_Q\Method\PQ121224CLP.M  
 Quant Title : GC EXTRACTABLES  
 QLast Update : Fri Dec 13 04:43:19 2024  
 Response via : Initial Calibration  
 Integrator: ChemStation

Volume Inj. : 1 µl  
 Signal #1 Phase : ZB MR1 Signal #2 Phase: ZB MR2  
 Signal #1 Info : 30Mx0.32mmx 0.5µm Signal #2 Info : 30M x 0.32mm x 0.25µm

Compound	RT#1	RT#2	Resp#1	Resp#2	ng/ml	ng/ml
System Monitoring Compounds						
1) SA Tetrachlo...	3.415	2.790	87338786	111.7E6	17.298	16.243
2) SA Decachlor...	8.523	7.563	51616312	116.1E6	20.541	21.342
Target Compounds						
3) L1 AR-1016-1	4.465f	0.000	56886371	0	380.563	N.D. #
4) L1 AR-1016-2	4.550	0.000	29119737	0	122.809	N.D. #
5) L1 AR-1016-3	4.593	3.979	16793620	1085327	113.858	6.019 #
6) L1 AR-1016-4	4.659	3.979f	6686051	1085327	56.591	7.040 #
7) L1 AR-1016-5	4.960	4.188	1187704	34113707	10.123	175.846 #
8) L2 AR-1221-1	3.589	0.000	3852043	0	67.851	N.D. #
9) L2 AR-1221-2	3.687	3.089	6048436	2165756	153.637	37.315 #
10) L2 AR-1221-3	3.746	3.101	4560095	1672906	35.068	8.948 #
11) L3 AR-1232-1	3.768	3.101	1912675	1672906	18.498	11.315 #
12) L3 AR-1232-2	4.251	0.000	33677734	0	616.212	N.D. #
13) L3 AR-1232-3	4.550	3.979	29119737	1085327	277.659	13.475 #
14) L3 AR-1232-4	4.659	4.088	6686051	17575596	130.215	261.143 #
15) L3 AR-1232-5	4.767	4.188	3492017	34113707	97.920	439.589 #
16) L4 AR-1242-1	4.465f	0.000	56886371	0	457.821	N.D. #
17) L4 AR-1242-2	4.550	0.000	29119737	0	149.653	N.D. #
18) L4 AR-1242-3	4.593	3.979	16793620	1085327	135.508	7.310 #
19) L4 AR-1242-4	4.659	4.088	6686051	17575596	67.490	128.978 #
20) L4 AR-1242-5	5.370	4.507f	5293650	9682407	48.187	53.444
21) L5 AR-1248-1	4.465f	0.000	56886371	0	620.025	N.D. #
22) L5 AR-1248-2	4.767	3.979f	3492017	1085327	27.003	5.341 #
23) L5 AR-1248-3	4.960	4.088	1187704	17575596	7.699	88.826 #
24) L5 AR-1248-4	5.328	4.188	9661902	34113707	56.324	139.846 #
25) L5 AR-1248-5	5.370	0.000	5293650	0	30.663	N.D. #
26) L6 AR-1254-1	5.312	4.507f	2905412	9682407	16.216	26.056 #
27) L6 AR-1254-2	5.564f	4.687	2431202	8700066	8.801	26.619 #
28) L6 AR-1254-3	5.840	0.000	904049	0	3.209	N.D. #
29) L6 AR-1254-4	6.103f	5.273f	3956710	500954	19.966	1.575 #
31) L7 AR-1260-1	6.053	5.273f	4060856	500954	19.365	1.403 #
32) L7 AR-1260-2	6.370f	5.397	3718212	1536408	15.070	3.612 #
34) L7 AR-1260-4	6.821f	6.004	1491935	4713652	7.407	13.188 #
35) L7 AR-1260-5	0.000	6.306f	0	2116121	N.D.	2.619 #
36) L8 AR-1262-1	6.821f	0.000	1491935	0	5.899	N.D. #
37) L8 AR-1262-2	7.100f	6.004	1270747	4713652	2.828	10.340 #
38) L8 AR-1262-3	0.000	6.509	0	1885446	N.D.	5.177 #
41) L9 AR-1268-1	0.000	6.509	0	1885446	N.D.	1.830 #
45) L9 AR-1268-5	8.299	7.344	684869	2368142	0.585	1.000 #

(f)=RT Delta > 1/2 Window (#)=Amounts differ by > 25% (m)=manual int.

**Instrument :**

ECD\_Q

**ClientSampleId :**

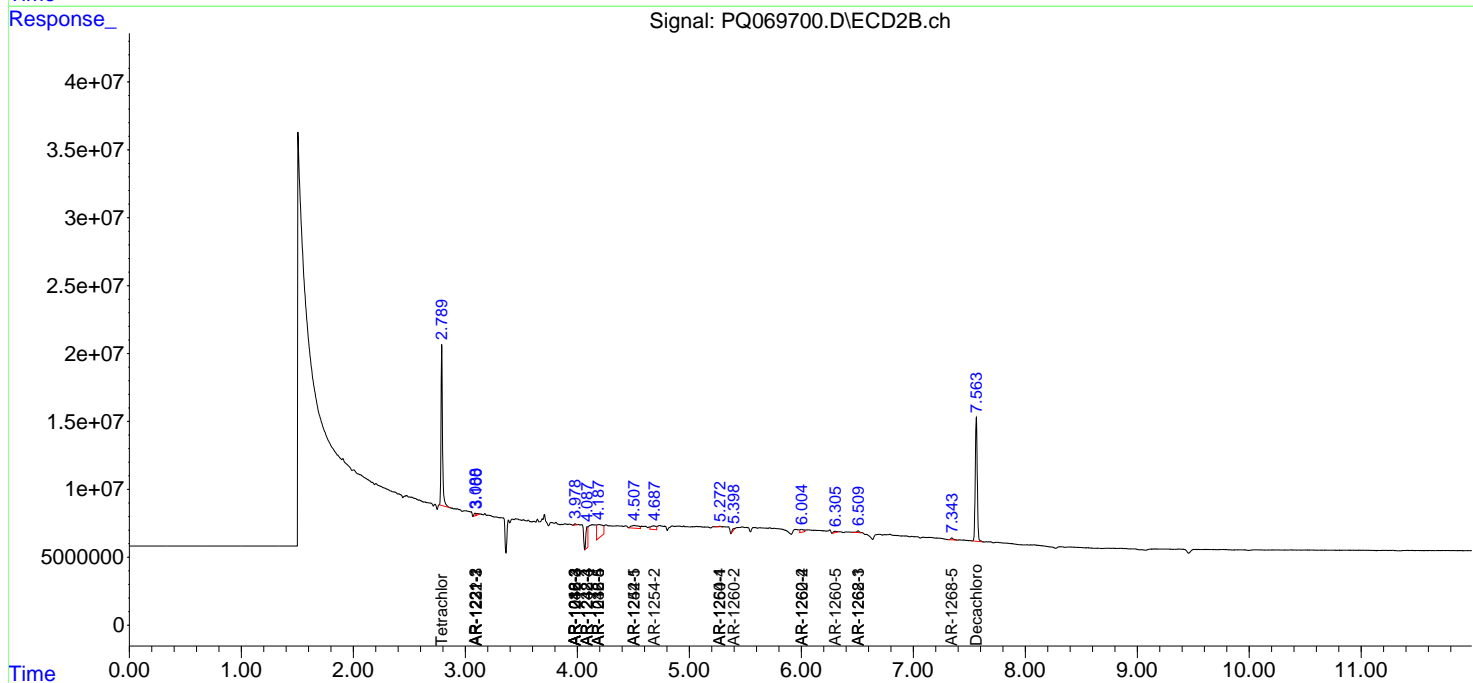
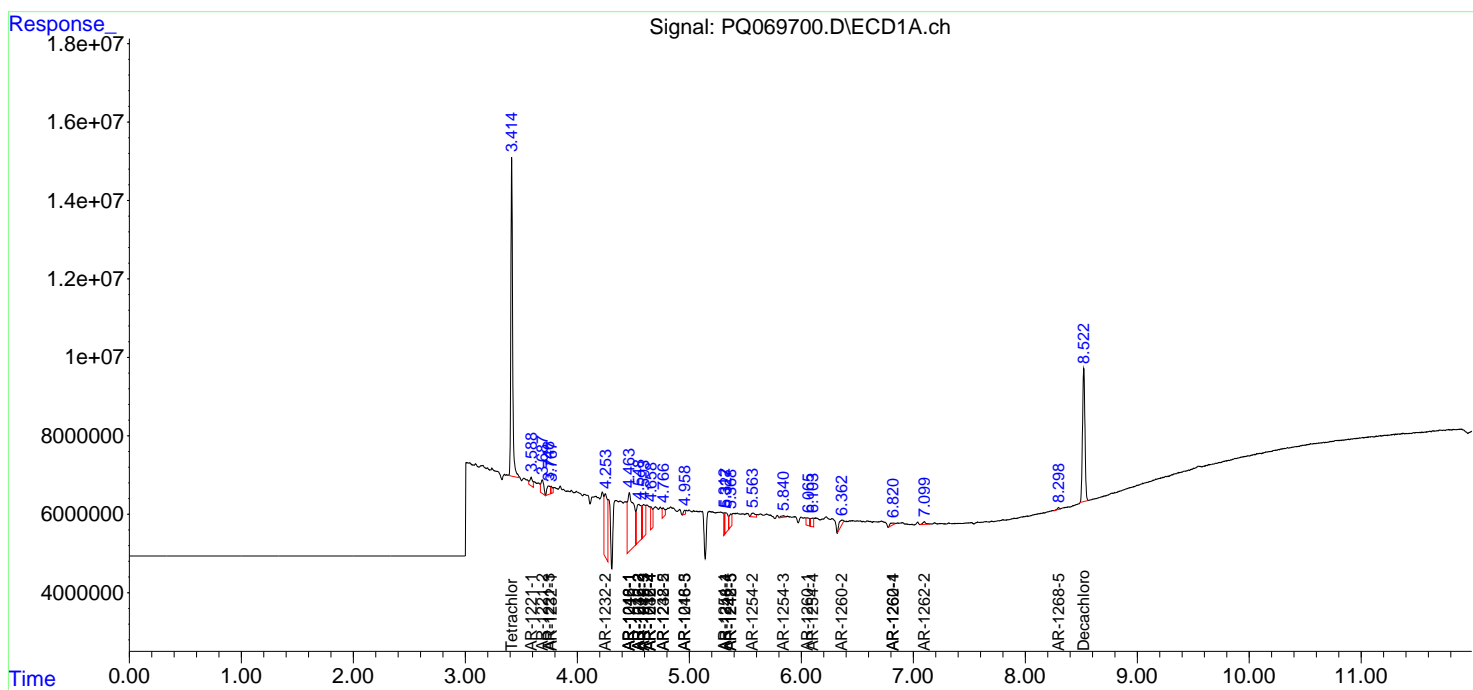
E2AT5

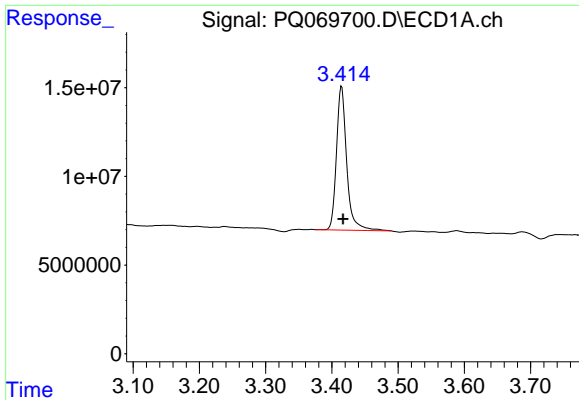
Data Path : Z:\pestpcbsrv\HPCHEM1\ECD\_Q\Data\PQ121324\  
 Data File : PQ069700.D  
 Signal(s) : Signal #1: ECD1A.ch Signal #2: ECD2B.ch  
 Acq On : 13 Dec 2024 20:20  
 Operator : YP\AJ  
 Sample : P5228-12  
 Misc :  
 ALS Vial : 36 Sample Multiplier: 1

**Instrument :**  
 ECD\_Q  
**ClientSampleId :**  
 E2AT5

Integration File signal 1: autoint1.e  
 Integration File signal 2: autoint2.e  
 Quant Time: Dec 14 00:22:28 2024  
 Quant Method : Z:\pestpcbsrv\HPCHEM1\ECD\_Q\Method\PQ121224CLP.M  
 Quant Title : GC EXTRACTABLES  
 QLast Update : Fri Dec 13 04:43:19 2024  
 Response via : Initial Calibration  
 Integrator: ChemStation

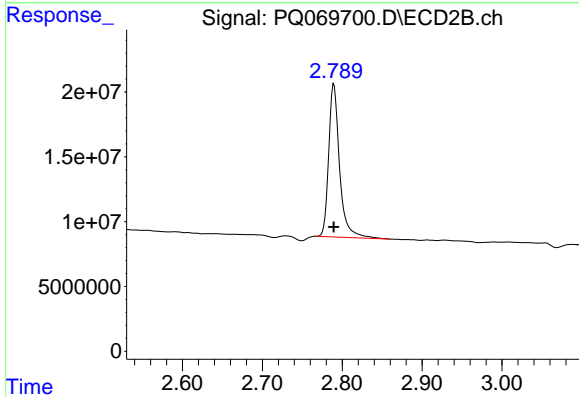
Volume Inj. : 1 µl  
 Signal #1 Phase : ZB MR1 Signal #2 Phase: ZB MR2  
 Signal #1 Info : 30Mx0.32mmx 0.5µm Signal #2 Info : 30M x 0.32mm x 0.25µm



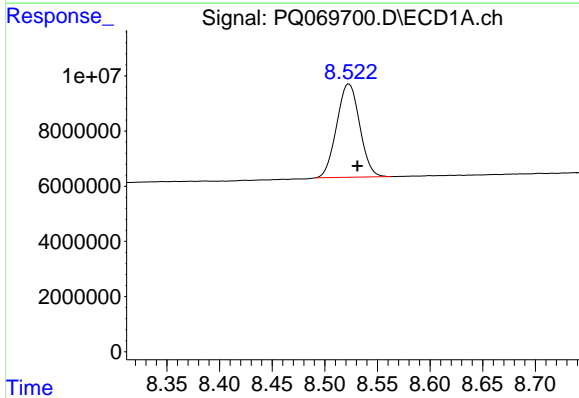


#1 Tetrachloro-m-xylene  
 R.T.: 3.415 min  
 Delta R.T.: -0.002 min  
 Response: 87338786  
 Conc: 17.30 ng/ml

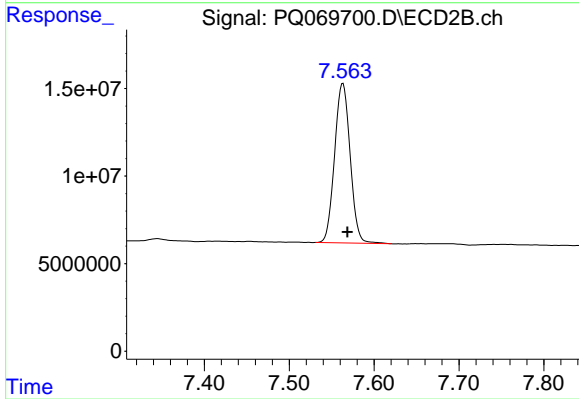
Instrument :  
 ECD\_Q  
 ClientSampleId :  
 E2AT5



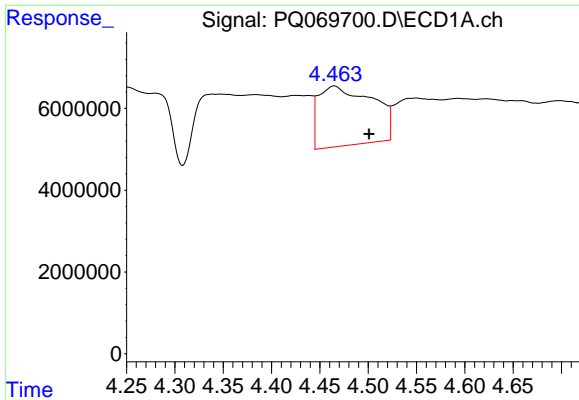
#1 Tetrachloro-m-xylene  
 R.T.: 2.790 min  
 Delta R.T.: 0.000 min  
 Response: 111668469  
 Conc: 16.24 ng/ml



#2 Decachlorobiphenyl  
 R.T.: 8.523 min  
 Delta R.T.: -0.008 min  
 Response: 51616312  
 Conc: 20.54 ng/ml



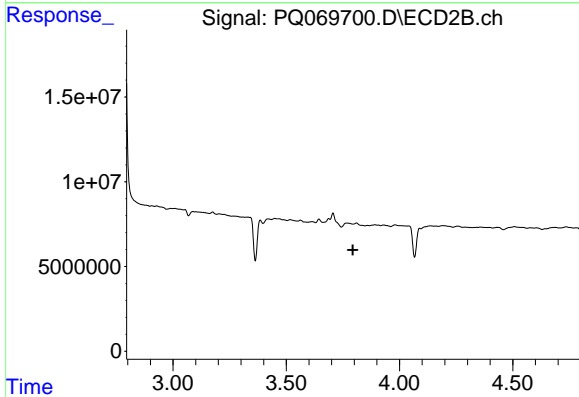
#2 Decachlorobiphenyl  
 R.T.: 7.563 min  
 Delta R.T.: -0.005 min  
 Response: 116074825  
 Conc: 21.34 ng/ml



#3 AR-1016-1

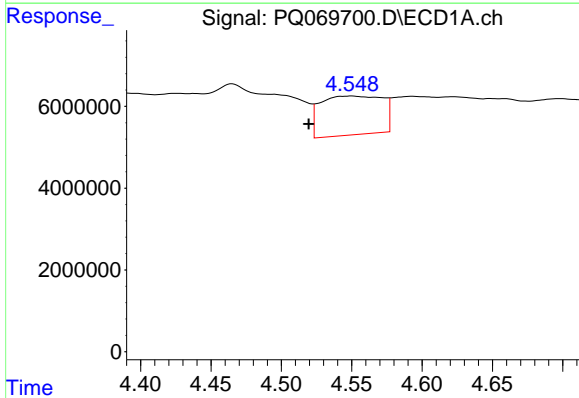
R.T.: 4.465 min  
 Delta R.T.: -0.036 min  
 Response: 56886371  
 Conc: 380.56 ng/ml

Instrument :  
 ECD\_Q  
 ClientSampleId :  
 E2AT5



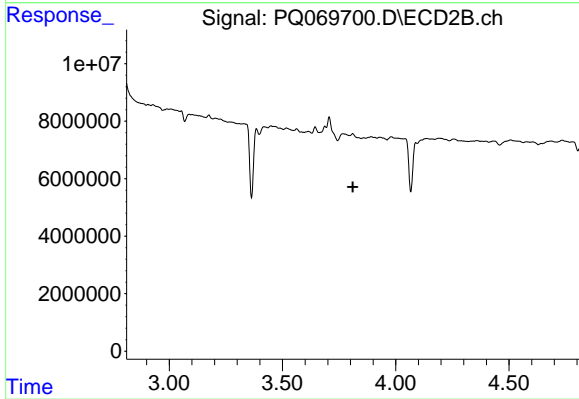
#3 AR-1016-1

R.T.: 0.000 min  
 Exp R.T. : 3.794 min  
 Response: 0  
 Conc: N.D.



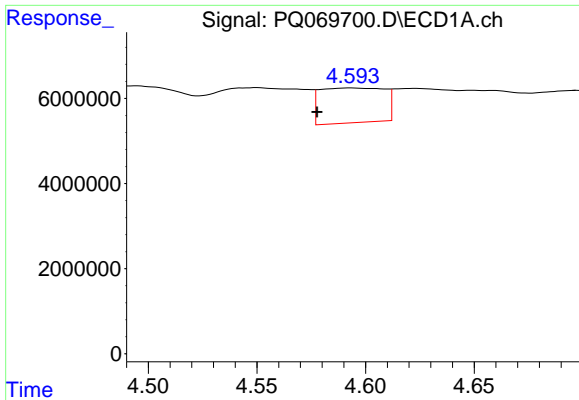
#4 AR-1016-2

R.T.: 4.550 min  
 Delta R.T.: 0.031 min  
 Response: 29119737  
 Conc: 122.81 ng/ml



#4 AR-1016-2

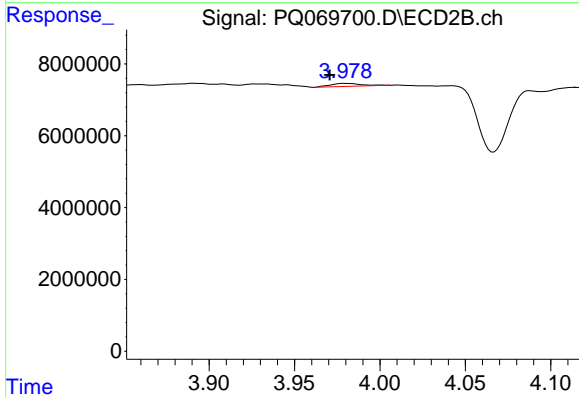
R.T.: 0.000 min  
 Exp R.T. : 3.810 min  
 Response: 0  
 Conc: N.D.



#5 AR-1016-3

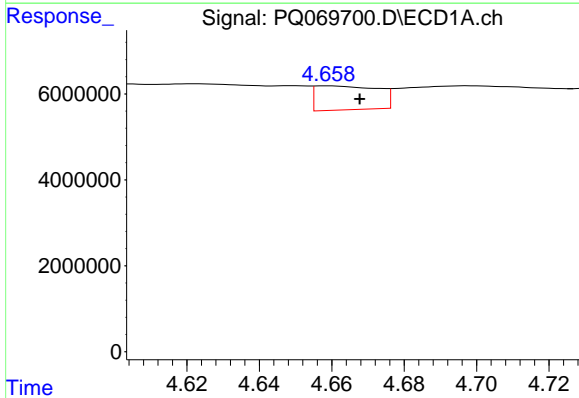
R.T.: 4.593 min  
 Delta R.T.: 0.016 min  
 Response: 16793620  
 Conc: 113.86 ng/ml

Instrument :  
 ECD\_Q  
 ClientSampleId :  
 E2AT5



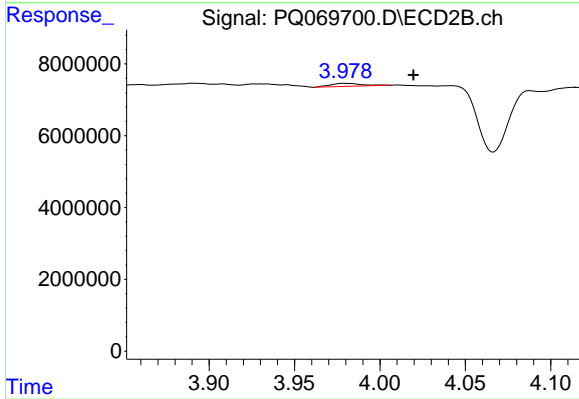
#5 AR-1016-3

R.T.: 3.979 min  
 Delta R.T.: 0.009 min  
 Response: 1085327  
 Conc: 6.02 ng/ml



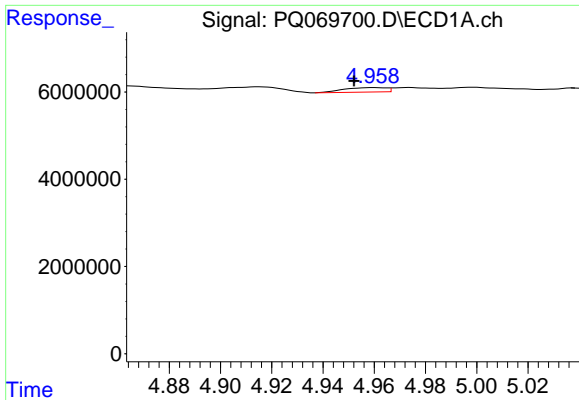
#6 AR-1016-4

R.T.: 4.659 min  
 Delta R.T.: -0.009 min  
 Response: 6686051  
 Conc: 56.59 ng/ml



#6 AR-1016-4

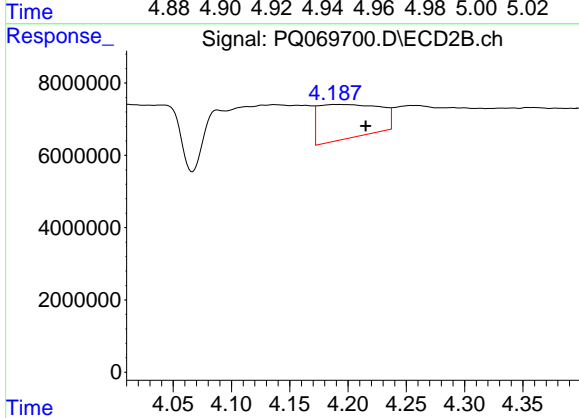
R.T.: 3.979 min  
 Delta R.T.: -0.040 min  
 Response: 1085327  
 Conc: 7.04 ng/ml



#7 AR-1016-5

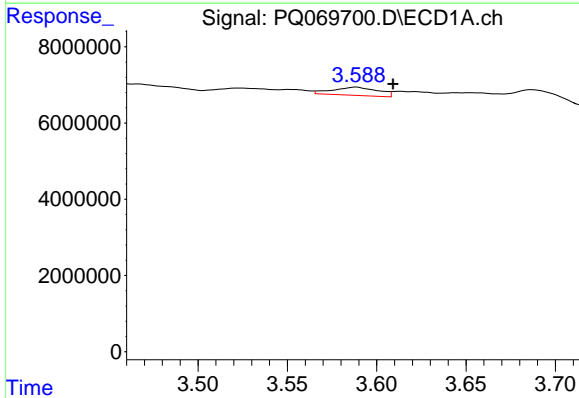
R.T.: 4.960 min  
 Delta R.T.: 0.008 min  
 Response: 1187704  
 Conc: 10.12 ng/ml

Instrument :  
 ECD\_Q  
 ClientSampleId :  
 E2AT5



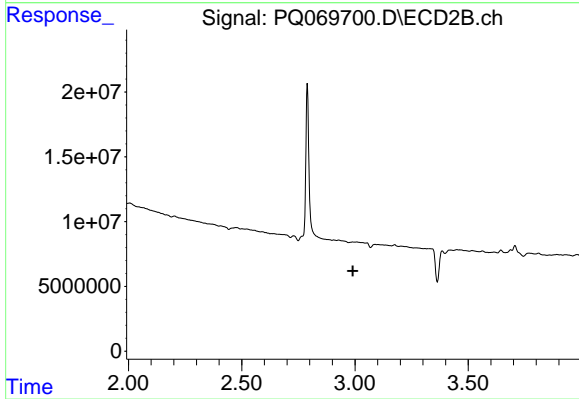
#7 AR-1016-5

R.T.: 4.188 min  
 Delta R.T.: -0.027 min  
 Response: 34113707  
 Conc: 175.85 ng/ml



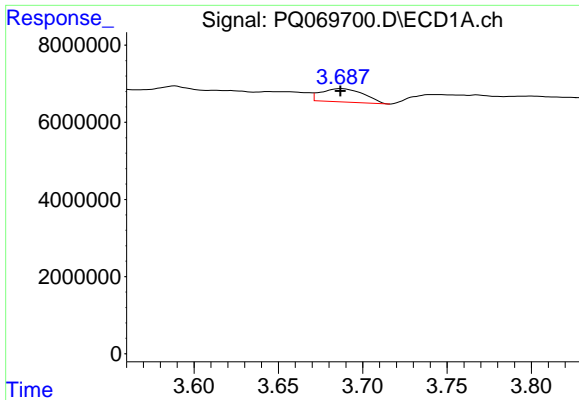
#8 AR-1221-1

R.T.: 3.589 min  
 Delta R.T.: -0.021 min  
 Response: 3852043  
 Conc: 67.85 ng/ml



#8 AR-1221-1

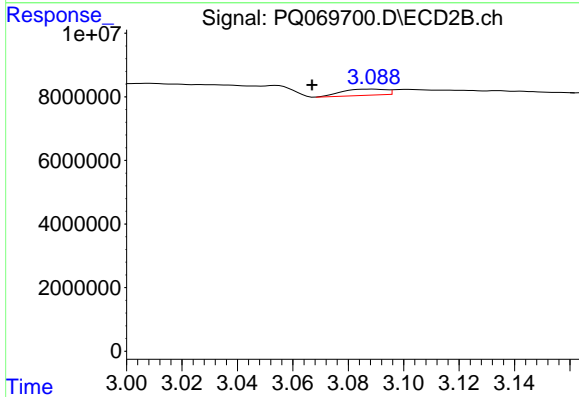
R.T.: 0.000 min  
 Exp R.T.: 2.990 min  
 Response: 0  
 Conc: N.D.



#9 AR-1221-2

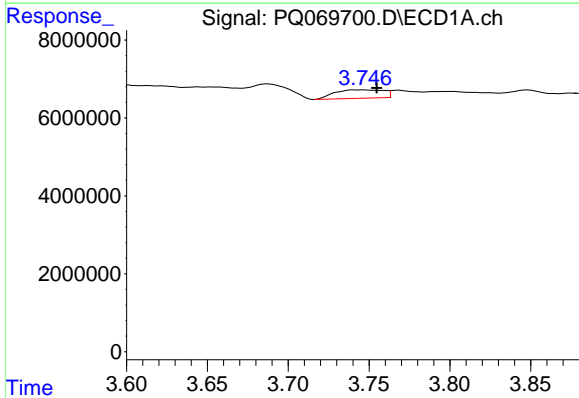
R.T.: 3.687 min  
 Delta R.T.: 0.000 min  
 Response: 6048436  
 Conc: 153.64 ng/ml

Instrument :  
 ECD\_Q  
 ClientSampleId :  
 E2AT5



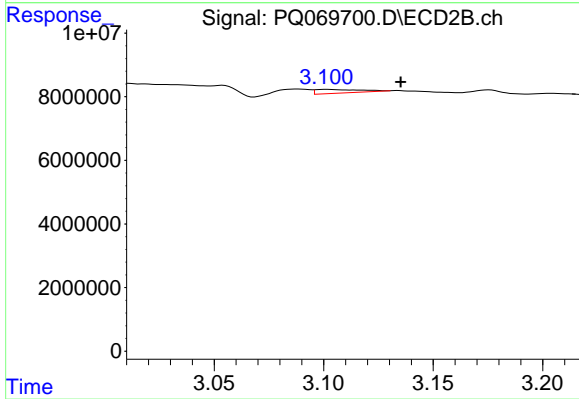
#9 AR-1221-2

R.T.: 3.089 min  
 Delta R.T.: 0.022 min  
 Response: 2165756  
 Conc: 37.31 ng/ml



#10 AR-1221-3

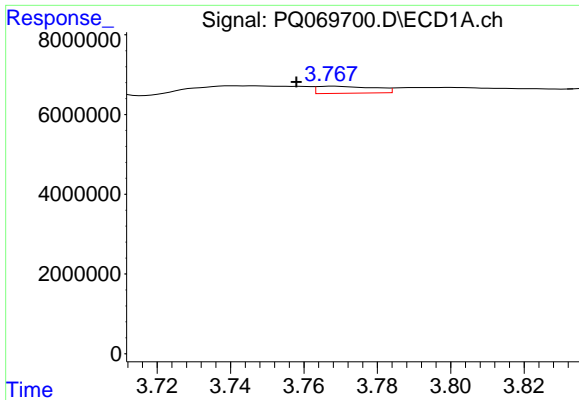
R.T.: 3.746 min  
 Delta R.T.: -0.009 min  
 Response: 4560095  
 Conc: 35.07 ng/ml



#10 AR-1221-3

R.T.: 3.101 min  
 Delta R.T.: -0.034 min  
 Response: 1672906  
 Conc: 8.95 ng/ml

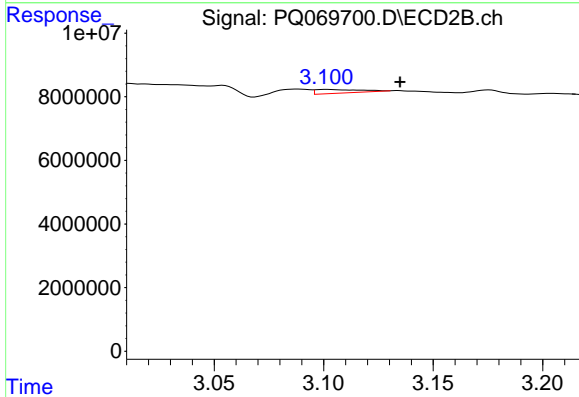




#11 AR-1232-1

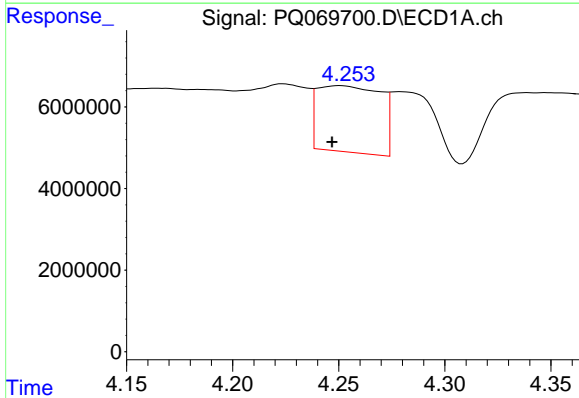
R.T.: 3.768 min  
 Delta R.T.: 0.010 min  
 Response: 1912675  
 Conc: 18.50 ng/ml

Instrument :  
 ECD\_Q  
 ClientSampleId :  
 E2AT5



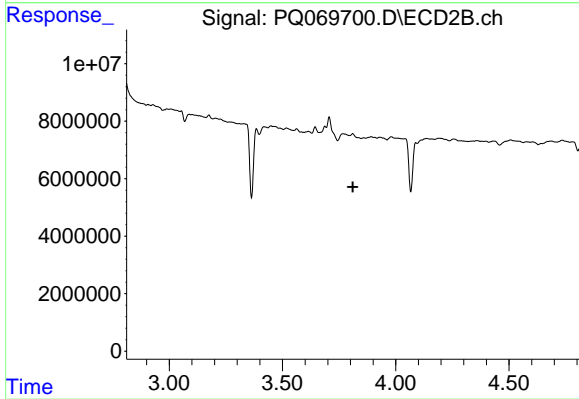
#11 AR-1232-1

R.T.: 3.101 min  
 Delta R.T.: -0.034 min  
 Response: 1672906  
 Conc: 11.31 ng/ml



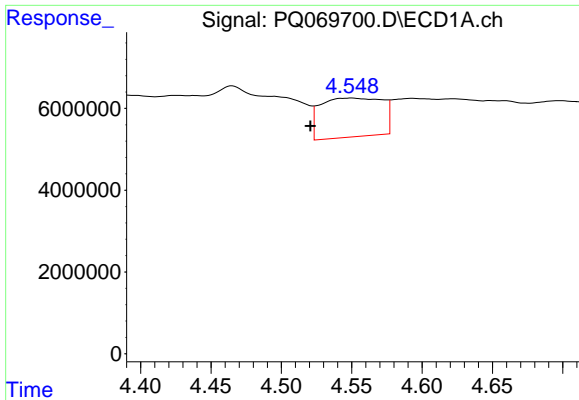
#12 AR-1232-2

R.T.: 4.251 min  
 Delta R.T.: 0.004 min  
 Response: 33677734  
 Conc: 616.21 ng/ml



#12 AR-1232-2

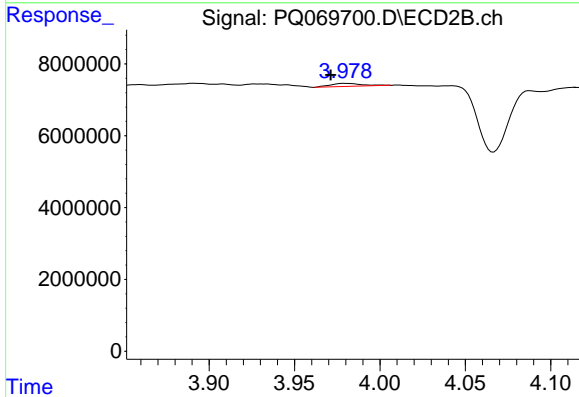
R.T.: 0.000 min  
 Exp R.T. : 3.811 min  
 Response: 0  
 Conc: N.D.



#13 AR-1232-3

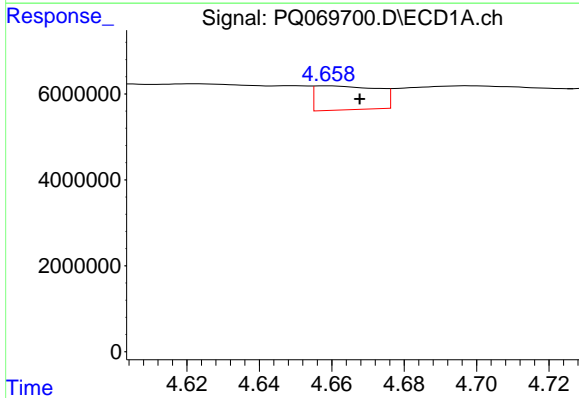
R.T.: 4.550 min  
 Delta R.T.: 0.029 min  
 Response: 29119737  
 Conc: 277.66 ng/ml

Instrument :  
 ECD\_Q  
 ClientSampleId :  
 E2AT5



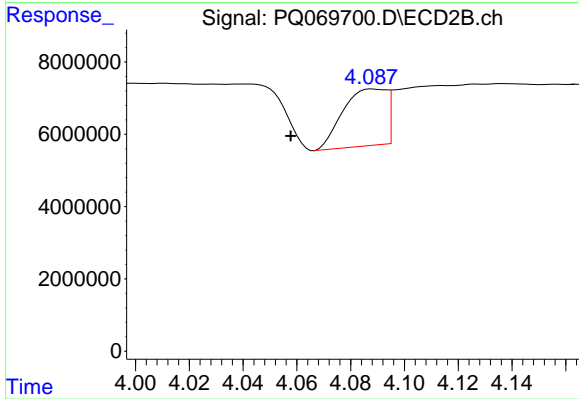
#13 AR-1232-3

R.T.: 3.979 min  
 Delta R.T.: 0.008 min  
 Response: 1085327  
 Conc: 13.47 ng/ml



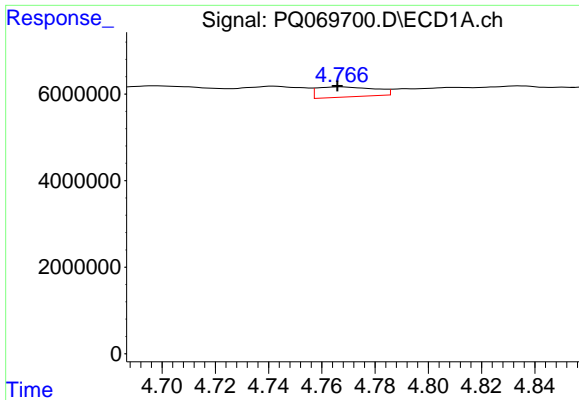
#14 AR-1232-4

R.T.: 4.659 min  
 Delta R.T.: -0.009 min  
 Response: 6686051  
 Conc: 130.21 ng/ml



#14 AR-1232-4

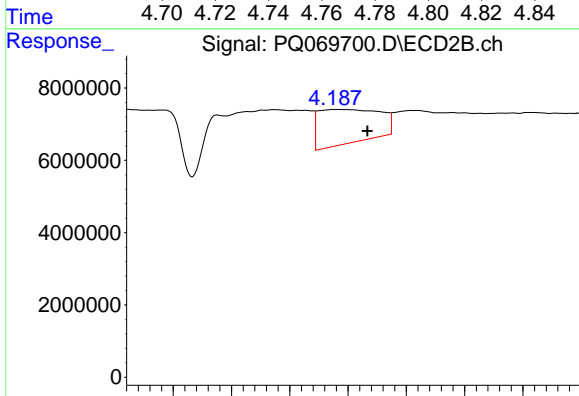
R.T.: 4.088 min  
 Delta R.T.: 0.031 min  
 Response: 17575596  
 Conc: 261.14 ng/ml



#15 AR-1232-5

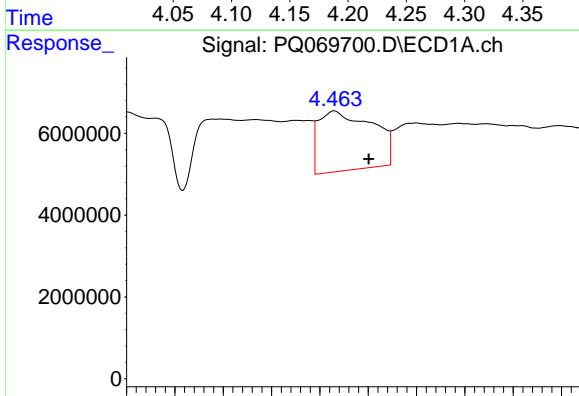
R.T.: 4.767 min  
 Delta R.T.: 0.001 min  
 Response: 3492017  
 Conc: 97.92 ng/ml

Instrument :  
 ECD\_Q  
 ClientSampleId :  
 E2AT5



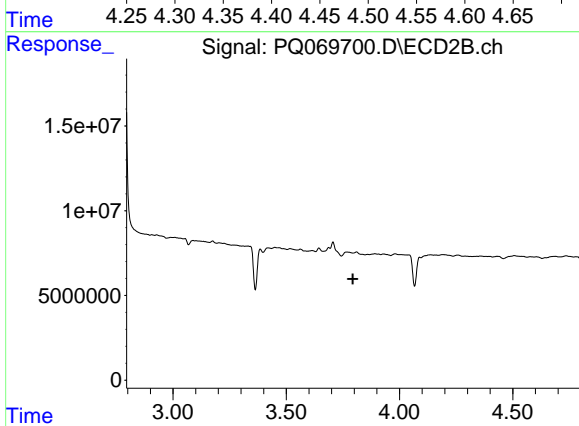
#15 AR-1232-5

R.T.: 4.188 min  
 Delta R.T.: -0.029 min  
 Response: 34113707  
 Conc: 439.59 ng/ml



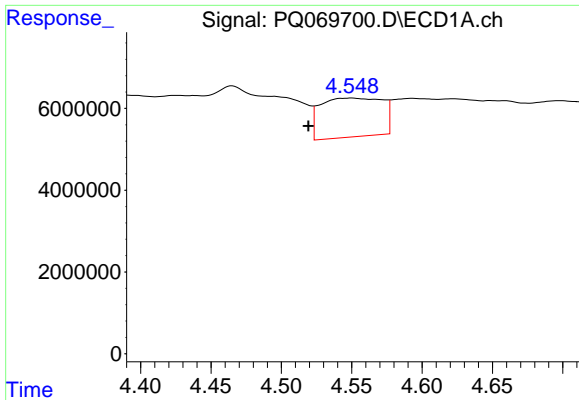
#16 AR-1242-1

R.T.: 4.465 min  
 Delta R.T.: -0.036 min  
 Response: 56886371  
 Conc: 457.82 ng/ml



#16 AR-1242-1

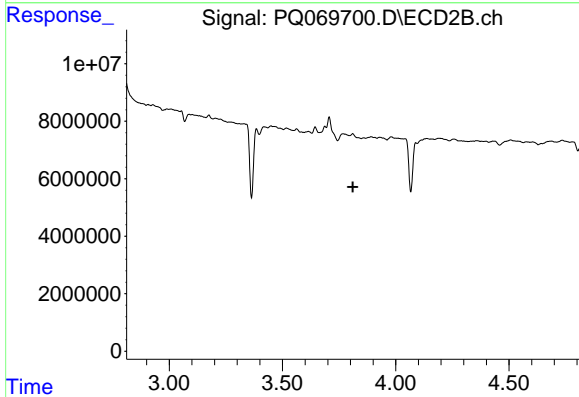
R.T.: 0.000 min  
 Exp R.T. : 3.794 min  
 Response: 0  
 Conc: N.D.



#17 AR-1242-2

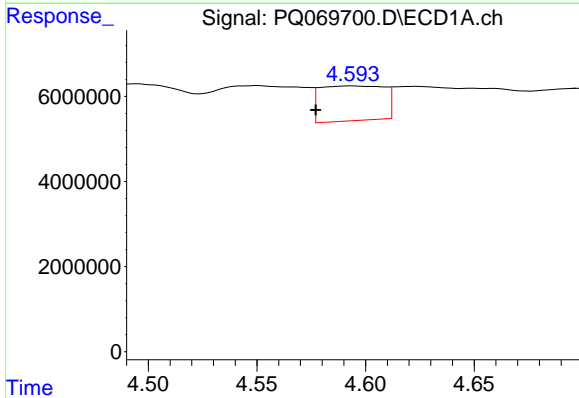
R.T.: 4.550 min  
 Delta R.T.: 0.031 min  
 Response: 29119737  
 Conc: 149.65 ng/ml

Instrument :  
 ECD\_Q  
 ClientSampleId :  
 E2AT5



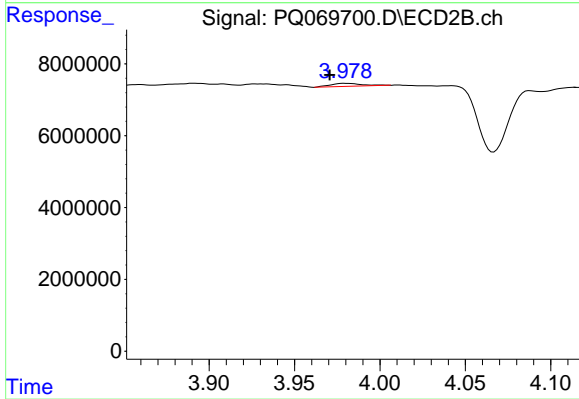
#17 AR-1242-2

R.T.: 0.000 min  
 Exp R.T. : 3.810 min  
 Response: 0  
 Conc: N.D.



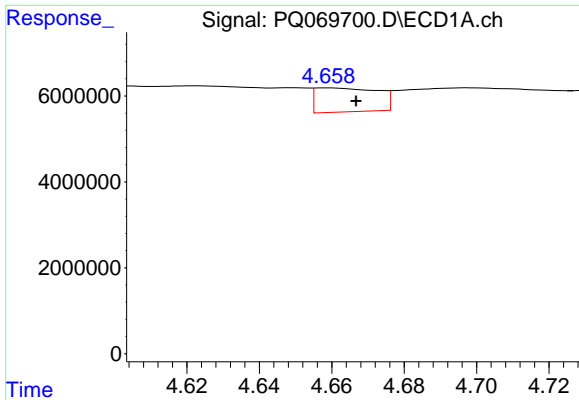
#18 AR-1242-3

R.T.: 4.593 min  
 Delta R.T.: 0.016 min  
 Response: 16793620  
 Conc: 135.51 ng/ml



#18 AR-1242-3

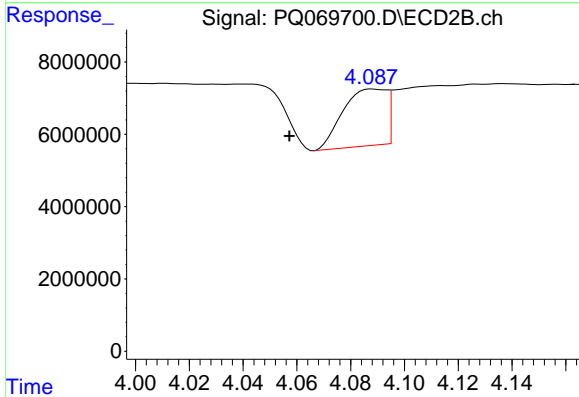
R.T.: 3.979 min  
 Delta R.T.: 0.009 min  
 Response: 1085327  
 Conc: 7.31 ng/ml



#19 AR-1242-4

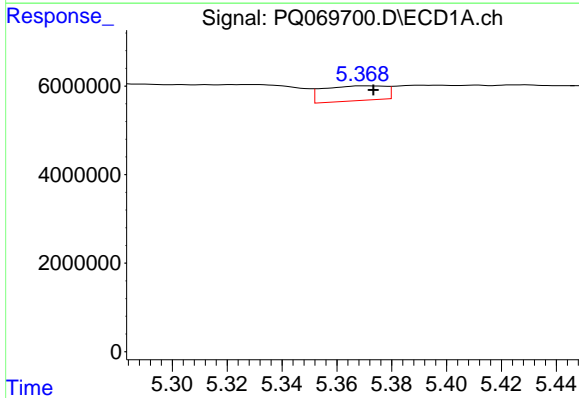
R.T.: 4.659 min  
 Delta R.T.: -0.008 min  
 Response: 6686051  
 Conc: 67.49 ng/ml

Instrument :  
 ECD\_Q  
 ClientSampleId :  
 E2AT5



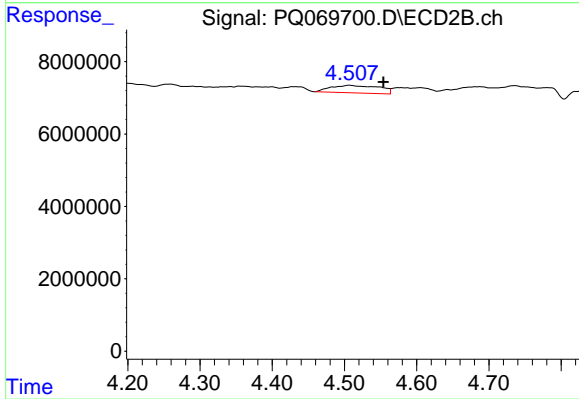
#19 AR-1242-4

R.T.: 4.088 min  
 Delta R.T.: 0.031 min  
 Response: 17575596  
 Conc: 128.98 ng/ml



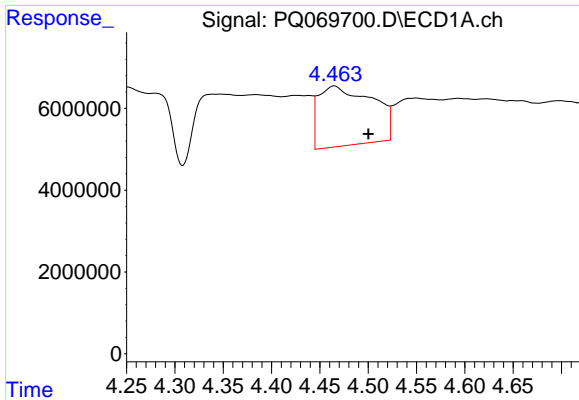
#20 AR-1242-5

R.T.: 5.370 min  
 Delta R.T.: -0.004 min  
 Response: 5293650  
 Conc: 48.19 ng/ml



#20 AR-1242-5

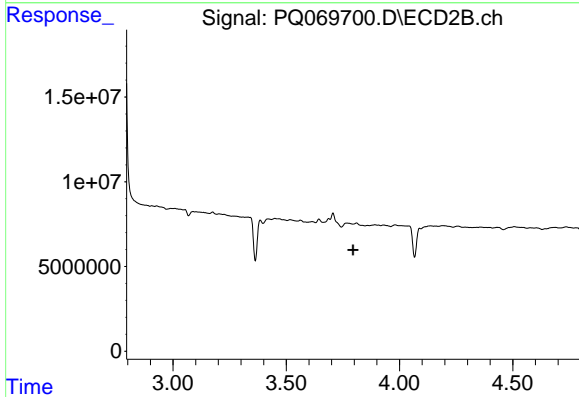
R.T.: 4.507 min  
 Delta R.T.: -0.047 min  
 Response: 9682407  
 Conc: 53.44 ng/ml



#21 AR-1248-1

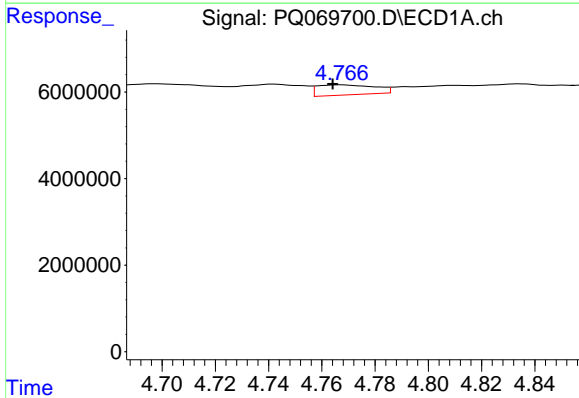
R.T.: 4.465 min  
 Delta R.T.: -0.035 min  
 Response: 56886371  
 Conc: 620.03 ng/ml

Instrument :  
 ECD\_Q  
 ClientSampleId :  
 E2AT5



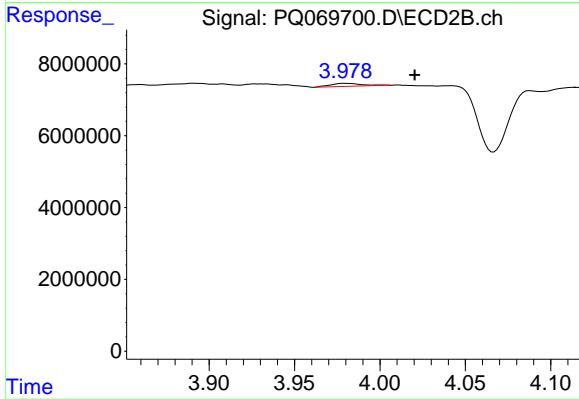
#21 AR-1248-1

R.T.: 0.000 min  
 Exp R.T. : 3.795 min  
 Response: 0  
 Conc: N.D.



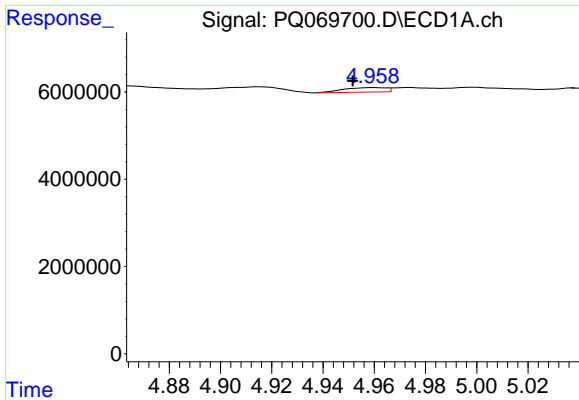
#22 AR-1248-2

R.T.: 4.767 min  
 Delta R.T.: 0.003 min  
 Response: 3492017  
 Conc: 27.00 ng/ml



#22 AR-1248-2

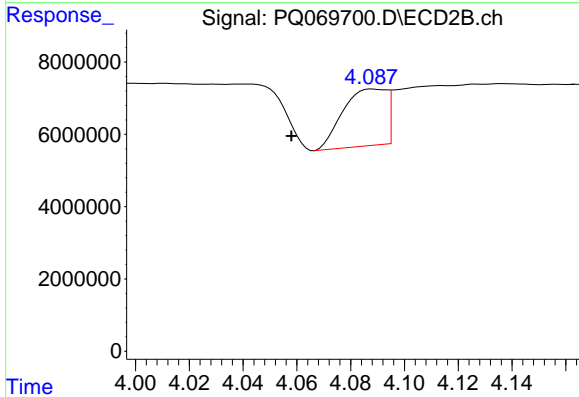
R.T.: 3.979 min  
 Delta R.T.: -0.041 min  
 Response: 1085327  
 Conc: 5.34 ng/ml



#23 AR-1248-3

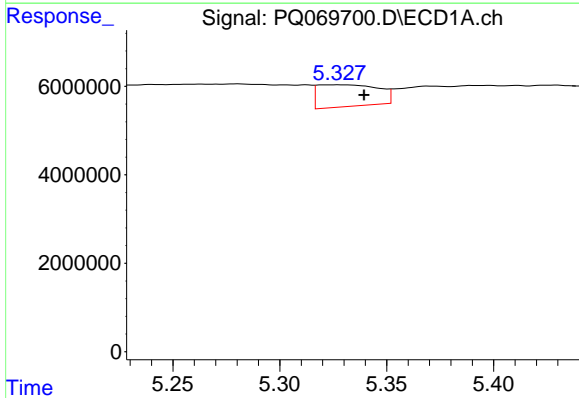
R.T.: 4.960 min  
 Delta R.T.: 0.008 min  
 Response: 1187704  
 Conc: 7.70 ng/ml

Instrument :  
 ECD\_Q  
 ClientSampleId :  
 E2AT5



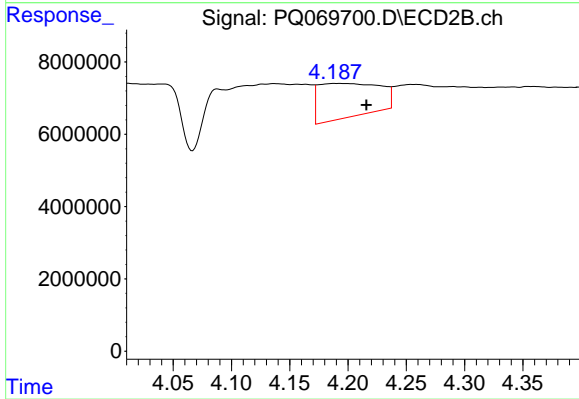
#23 AR-1248-3

R.T.: 4.088 min  
 Delta R.T.: 0.030 min  
 Response: 17575596  
 Conc: 88.83 ng/ml



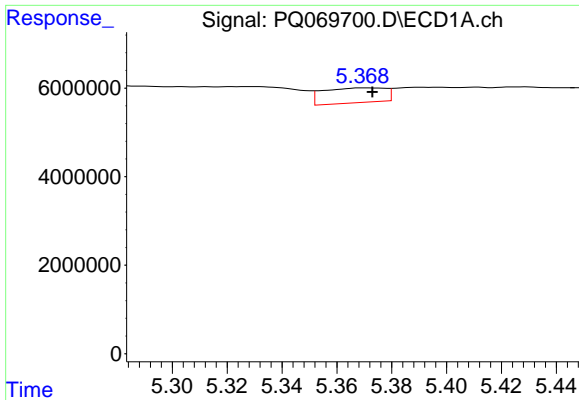
#24 AR-1248-4

R.T.: 5.328 min  
 Delta R.T.: -0.012 min  
 Response: 9661902  
 Conc: 56.32 ng/ml



#24 AR-1248-4

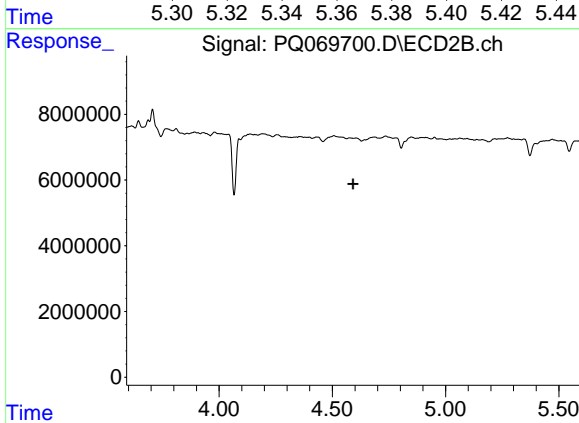
R.T.: 4.188 min  
 Delta R.T.: -0.028 min  
 Response: 34113707  
 Conc: 139.85 ng/ml



#25 AR-1248-5

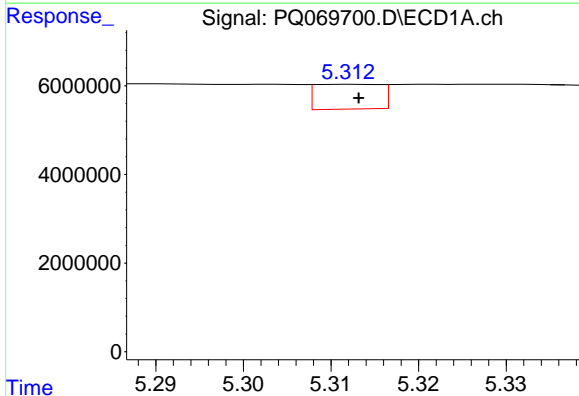
R.T.: 5.370 min  
 Delta R.T.: -0.003 min  
 Response: 5293650  
 Conc: 30.66 ng/ml

Instrument :  
 ECD\_Q  
 ClientSampleId :  
 E2AT5



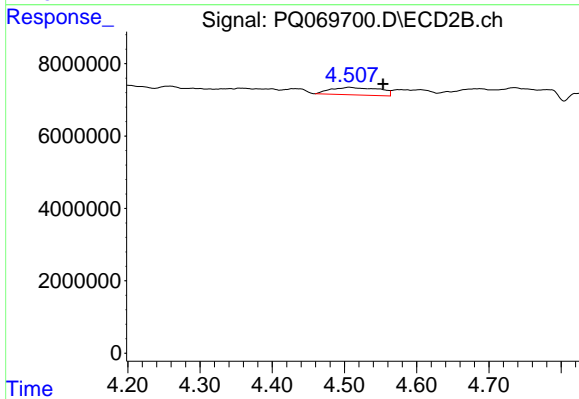
#25 AR-1248-5

R.T.: 0.000 min  
 Exp R.T. : 4.591 min  
 Response: 0  
 Conc: N.D.



#26 AR-1254-1

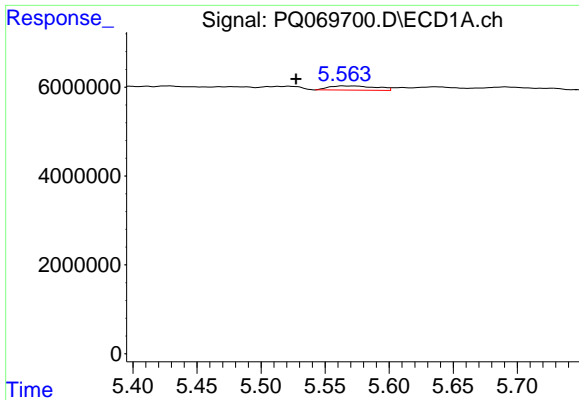
R.T.: 5.312 min  
 Delta R.T.: 0.000 min  
 Response: 2905412  
 Conc: 16.22 ng/ml



#26 AR-1254-1

R.T.: 4.507 min  
 Delta R.T.: -0.047 min  
 Response: 9682407  
 Conc: 26.06 ng/ml

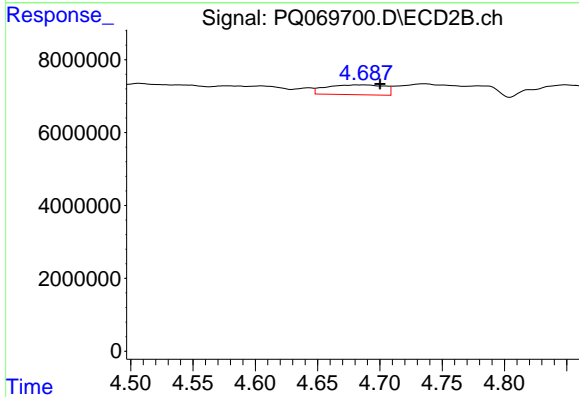




#27 AR-1254-2

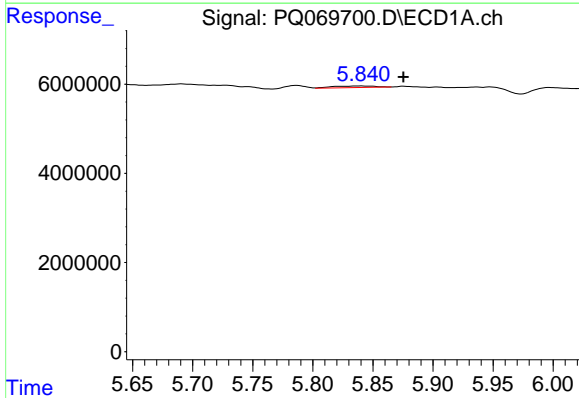
R.T.: 5.564 min  
 Delta R.T.: 0.037 min  
 Response: 2431202  
 Conc: 8.80 ng/ml

Instrument :  
 ECD\_Q  
 ClientSampleId :  
 E2AT5



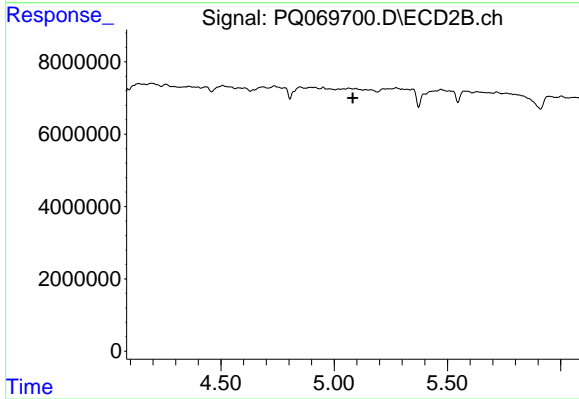
#27 AR-1254-2

R.T.: 4.687 min  
 Delta R.T.: -0.013 min  
 Response: 8700066  
 Conc: 26.62 ng/ml



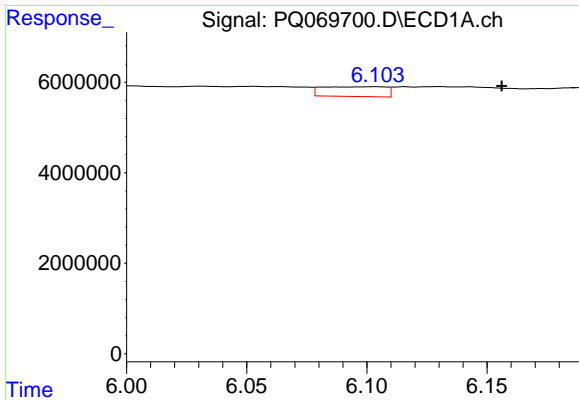
#28 AR-1254-3

R.T.: 5.840 min  
 Delta R.T.: -0.035 min  
 Response: 904049  
 Conc: 3.21 ng/ml



#28 AR-1254-3

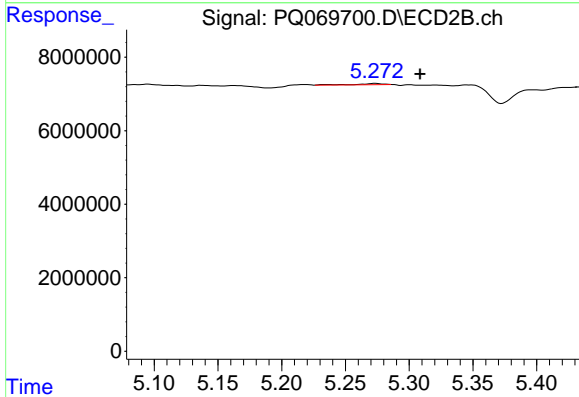
R.T.: 0.000 min  
 Exp R.T. : 5.082 min  
 Response: 0  
 Conc: N.D.



#29 AR-1254-4

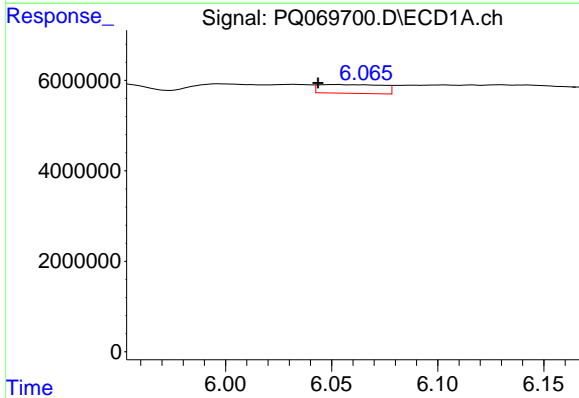
R.T.: 6.103 min  
 Delta R.T.: -0.053 min  
 Response: 3956710  
 Conc: 19.97 ng/ml

Instrument :  
 ECD\_Q  
 ClientSampleId :  
 E2AT5



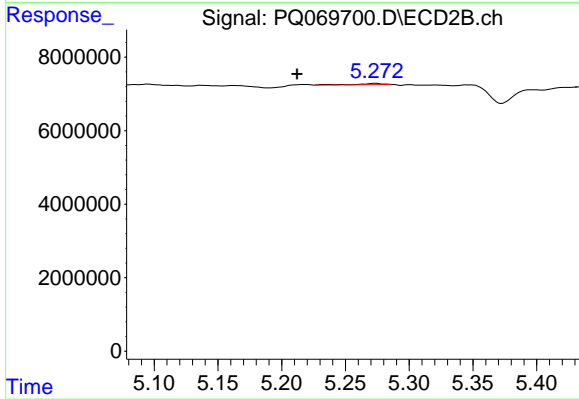
#29 AR-1254-4

R.T.: 5.273 min  
 Delta R.T.: -0.035 min  
 Response: 500954  
 Conc: 1.58 ng/ml



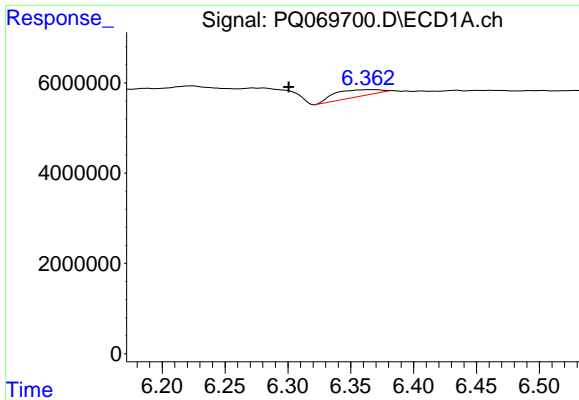
#31 AR-1260-1

R.T.: 6.053 min  
 Delta R.T.: 0.009 min  
 Response: 4060856  
 Conc: 19.36 ng/ml



#31 AR-1260-1

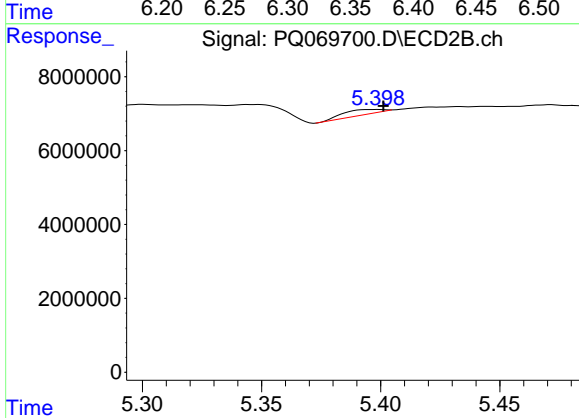
R.T.: 5.273 min  
 Delta R.T.: 0.061 min  
 Response: 500954  
 Conc: 1.40 ng/ml



#32 AR-1260-2

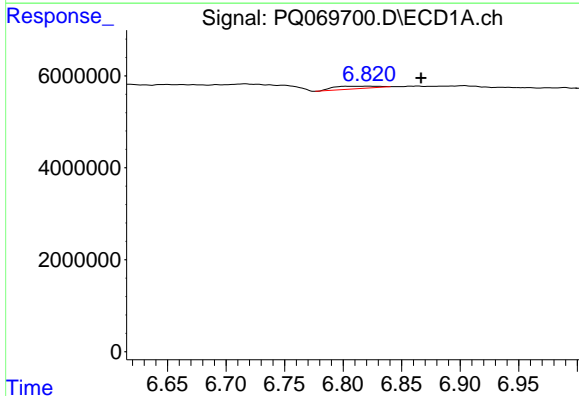
R.T.: 6.370 min  
 Delta R.T.: 0.069 min  
 Response: 3718212  
 Conc: 15.07 ng/ml

Instrument :  
 ECD\_Q  
 ClientSampleId :  
 E2AT5



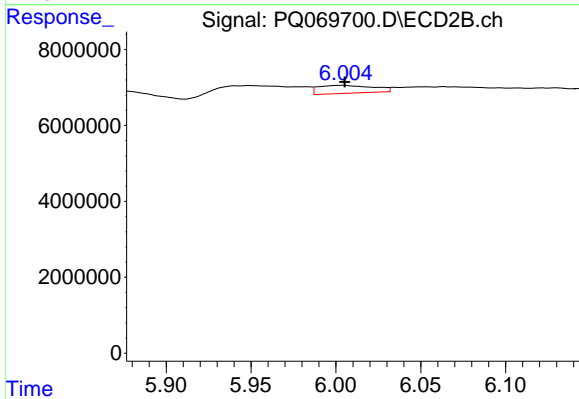
#32 AR-1260-2

R.T.: 5.397 min  
 Delta R.T.: -0.004 min  
 Response: 1536408  
 Conc: 3.61 ng/ml



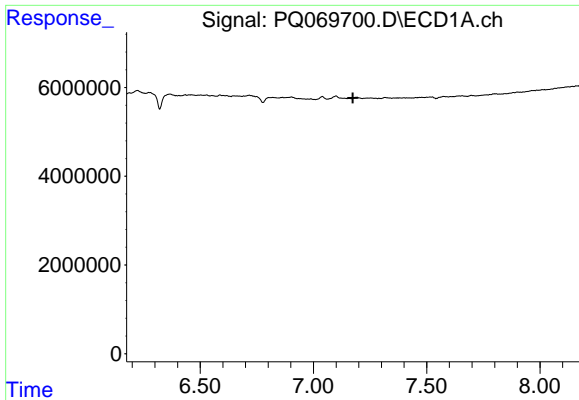
#34 AR-1260-4

R.T.: 6.821 min  
 Delta R.T.: -0.046 min  
 Response: 1491935  
 Conc: 7.41 ng/ml



#34 AR-1260-4

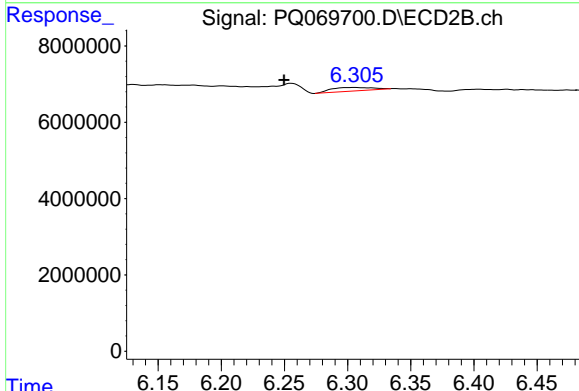
R.T.: 6.004 min  
 Delta R.T.: 0.000 min  
 Response: 4713652  
 Conc: 13.19 ng/ml



#35 AR-1260-5

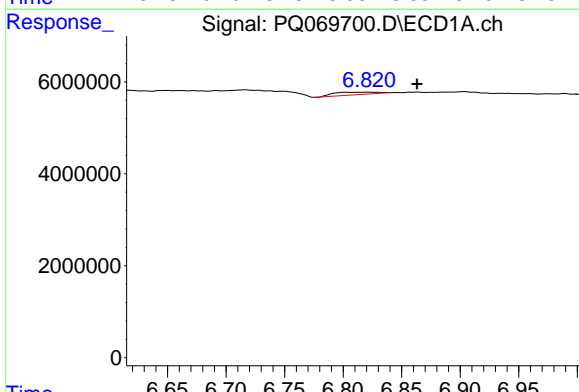
R.T.: 0.000 min  
 Exp R.T.: 7.173 min  
 Response: 0  
 Conc: N.D.

Instrument :  
 ECD\_Q  
 ClientSampleId :  
 E2AT5



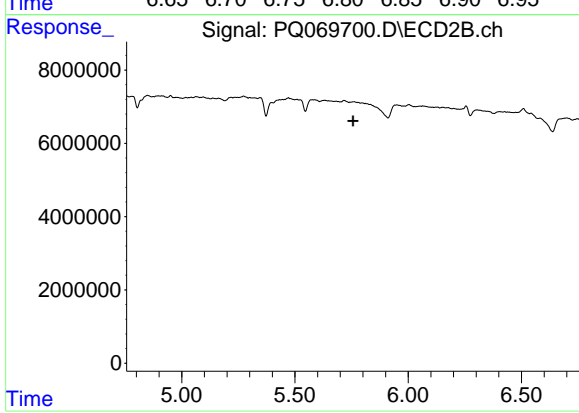
#35 AR-1260-5

R.T.: 6.306 min  
 Delta R.T.: 0.056 min  
 Response: 2116121  
 Conc: 2.62 ng/ml



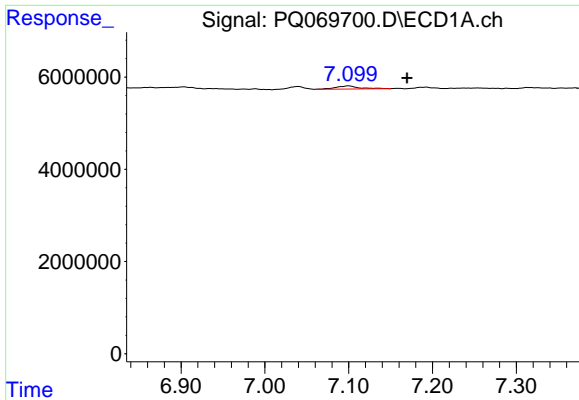
#36 AR-1262-1

R.T.: 6.821 min  
 Delta R.T.: -0.042 min  
 Response: 1491935  
 Conc: 5.90 ng/ml



#36 AR-1262-1

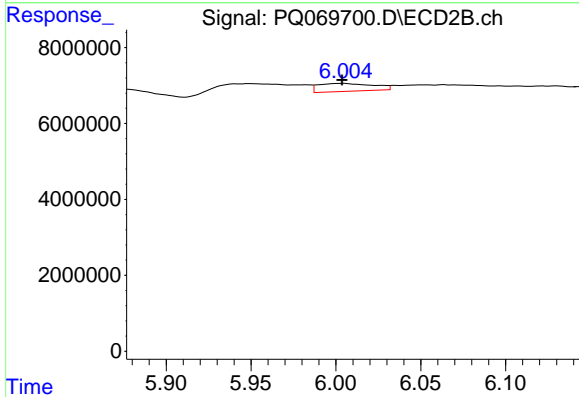
R.T.: 0.000 min  
 Exp R.T.: 5.756 min  
 Response: 0  
 Conc: N.D.



#37 AR-1262-2

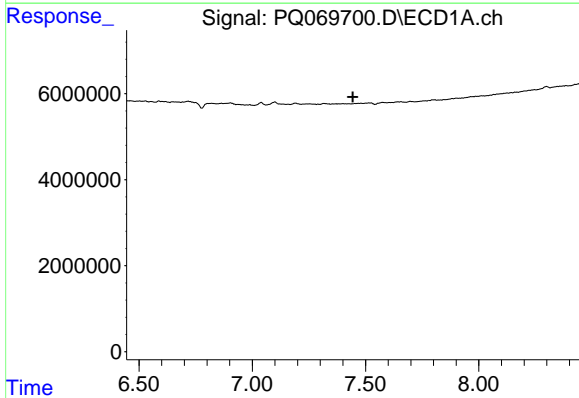
R.T.: 7.100 min  
 Delta R.T.: -0.070 min  
 Response: 1270747  
 Conc: 2.83 ng/ml

Instrument :  
 ECD\_Q  
 ClientSampleId :  
 E2AT5



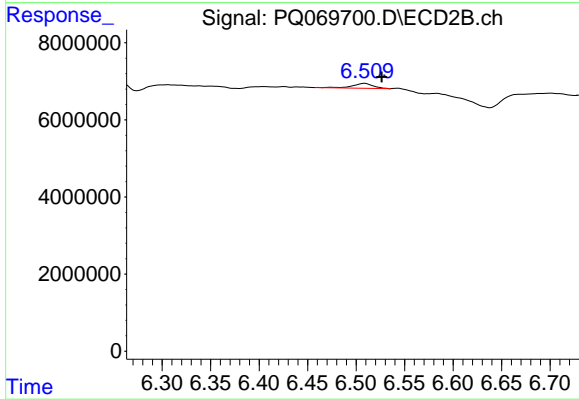
#37 AR-1262-2

R.T.: 6.004 min  
 Delta R.T.: 0.000 min  
 Response: 4713652  
 Conc: 10.34 ng/ml



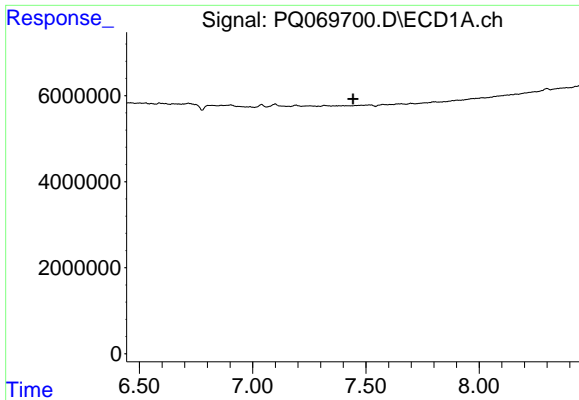
#38 AR-1262-3

R.T.: 0.000 min  
 Exp R.T. : 7.444 min  
 Response: 0  
 Conc: N.D.



#38 AR-1262-3

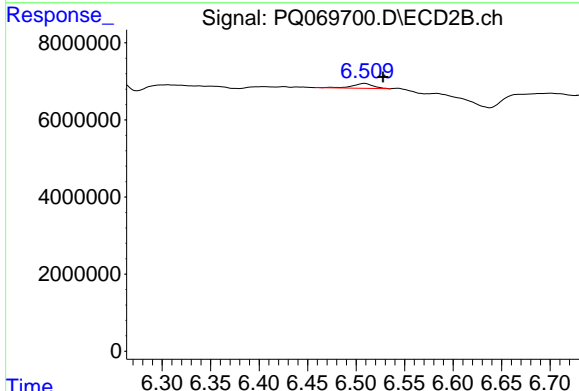
R.T.: 6.509 min  
 Delta R.T.: -0.017 min  
 Response: 1885446  
 Conc: 5.18 ng/ml



#41 AR-1268-1

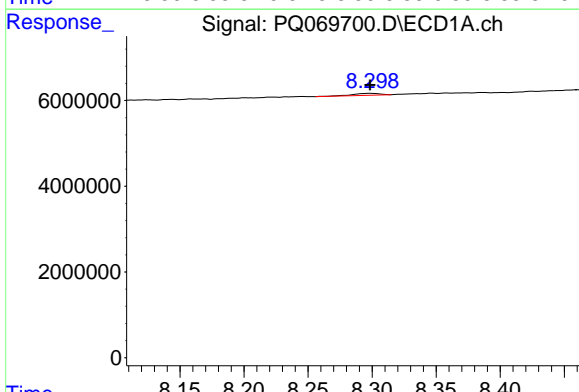
R.T.: 0.000 min  
 Exp R.T.: 7.443 min  
 Response: 0  
 Conc: N.D.

Instrument :  
 ECD\_Q  
 ClientSampleId :  
 E2AT5



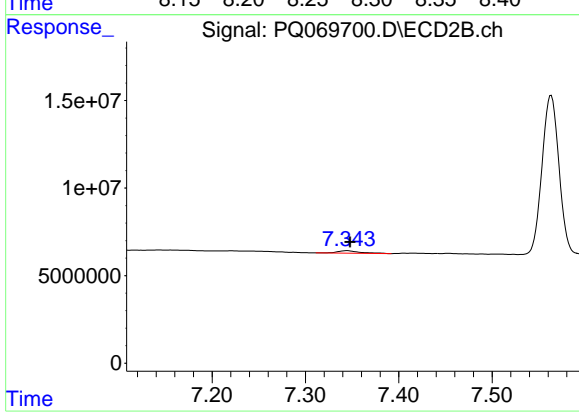
#41 AR-1268-1

R.T.: 6.509 min  
 Delta R.T.: -0.019 min  
 Response: 1885446  
 Conc: 1.83 ng/ml



#45 AR-1268-5

R.T.: 8.299 min  
 Delta R.T.: 0.000 min  
 Response: 684869  
 Conc: 0.59 ng/ml



#45 AR-1268-5

R.T.: 7.344 min  
 Delta R.T.: -0.004 min  
 Response: 2368142  
 Conc: 1.00 ng/ml