

Data Path : Z:\pestpcbsrv\HPCHEM1\ECD_Q\Data\PQ121518\
 Data File : PQ035559.D
 Signal(s) : Signal #1: ECD1A.ch Signal #2: ECD2B.ch
 Acq On : 15 Dec 2018 14:45
 Operator : SM\SJ
 Sample : J6386-07
 Misc :
 ALS Vial : 62 Sample Multiplier: 1

Instrument :
 ECD_Q
 ClientSampleId :

Integration File signal 1: autoint1.e
 Integration File signal 2: autoint2.e
 Quant Time: Dec 16 00:08:34 2018
 Quant Method : Z:\pestpcbsrv\HPCHEM1\ECD_Q\Method\PQ121318.M
 Quant Title : GC EXTRACTABLES
 QLast Update : Wed Dec 12 22:07:58 2018
 Response via : Initial Calibration
 Integrator: ChemStation

Volume Inj. : 2 µl
 Signal #1 Phase : ZB-MR2 Signal #2 Phase: ZB-MR2
 Signal #1 Info : 30Mx0.32mmx 0.50µ Signal #2 Info : 30M x 0.32mm x 0.25µm

	Compound	RT#1	RT#2	Resp#1	Resp#2	ng/ml	ng/ml

System Monitoring Compounds							
1)	SA Tetrachlo...	4.432	3.743	55575267	31709917	14.204	14.192
2)	SA Decachlor...	10.136	8.724	32345109	18890094	10.973	10.688
Target Compounds							
20)	L4 AR-1242-5	0.000	5.617	0	2088320	N.D.	37.839 #
24)	L5 AR-1248-4	6.448	0.000	4495069	0	36.501	N.D. #
25)	L5 AR-1248-5	0.000	5.617	0	2088320	N.D.	29.629 #
26)	L6 AR-1254-1	6.448	5.617	4495069	2088320	29.528	15.656 #
27)	L6 AR-1254-2	6.662	5.763	4696294	2971934	19.848	25.720 #
28)	L6 AR-1254-3	7.033	6.178	3847968	12371994	14.987	64.084 #
29)	L6 AR-1254-4	7.315	6.420	1687241	4798169	9.306	39.870 #
30)	L6 AR-1254-5	7.737	6.807	42393309	27374241	216.126	168.082
31)	L7 AR-1260-1	7.194	6.293	31098328	21349471	168.644	169.727
32)	L7 AR-1260-2	7.450	6.480	39023356	27744638	179.596	183.723
33)	L7 AR-1260-3	7.809	6.633	29737429	19628557	221.984	140.470 #
34)	L7 AR-1260-4	8.038	7.101	29959686	17687580	181.782	190.484
35)	L7 AR-1260-5	8.357	7.343	48840865	35947206	163.804	160.194
36)	L8 AR-1262-1	7.809	6.842	29737429	21957494	135.741	143.075
37)	L8 AR-1262-2	8.357	7.343	48840865	35947206	129.648	134.704
38)	L8 AR-1262-3	8.685	7.622	34660534	10369909	144.185	99.919 #
39)	L8 AR-1262-4	8.736	7.688	17752978	27328161	98.263	147.525 #
40)	L8 AR-1262-5	9.408	8.184	11007888	6080177	96.660	81.913
41)	L9 AR-1268-1	8.685	7.622	34660534	10369909	71.837	31.098 #
42)	L9 AR-1268-2	8.736	7.688	17752978	27328161	41.146	92.214 #
44)	L9 AR-1268-4	9.408	8.184	11007888	6080177	80.296	65.176
45)	L9 AR-1268-5	9.813	8.474	3491038	1880673	3.016	2.575

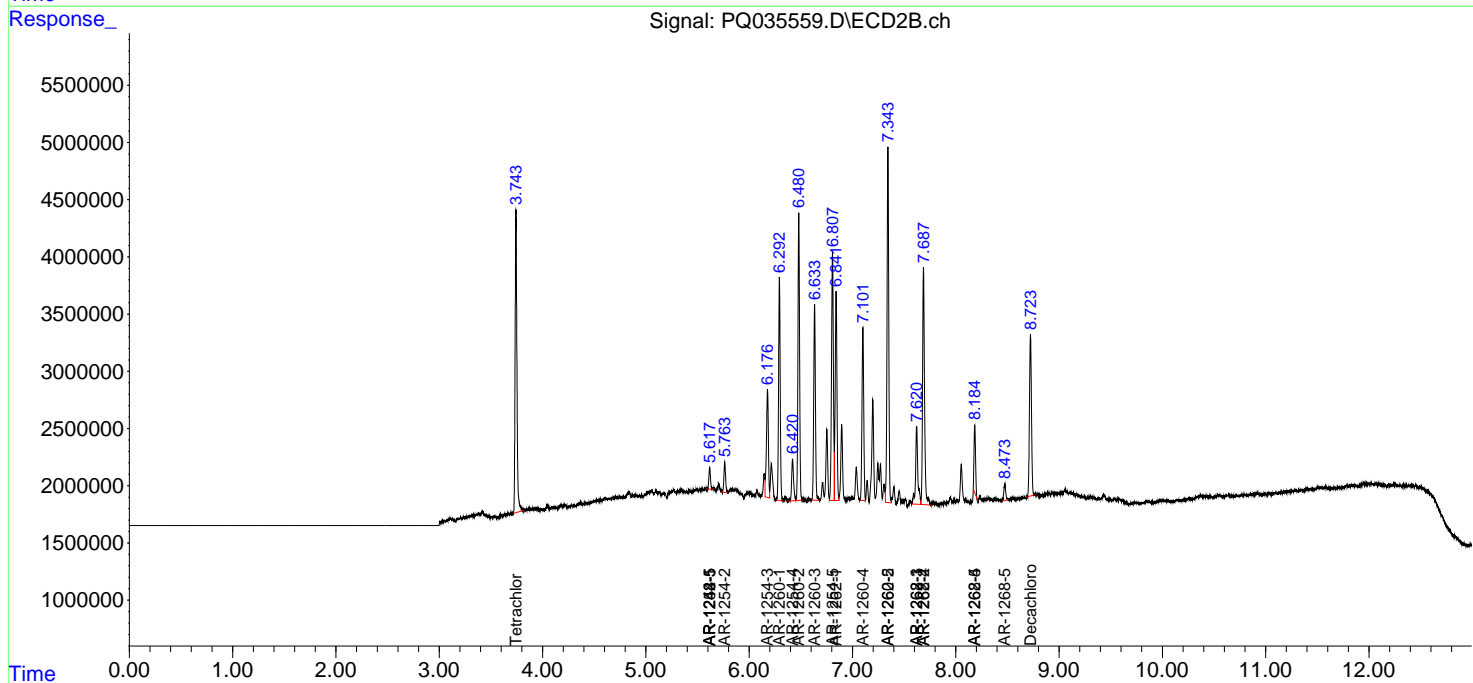
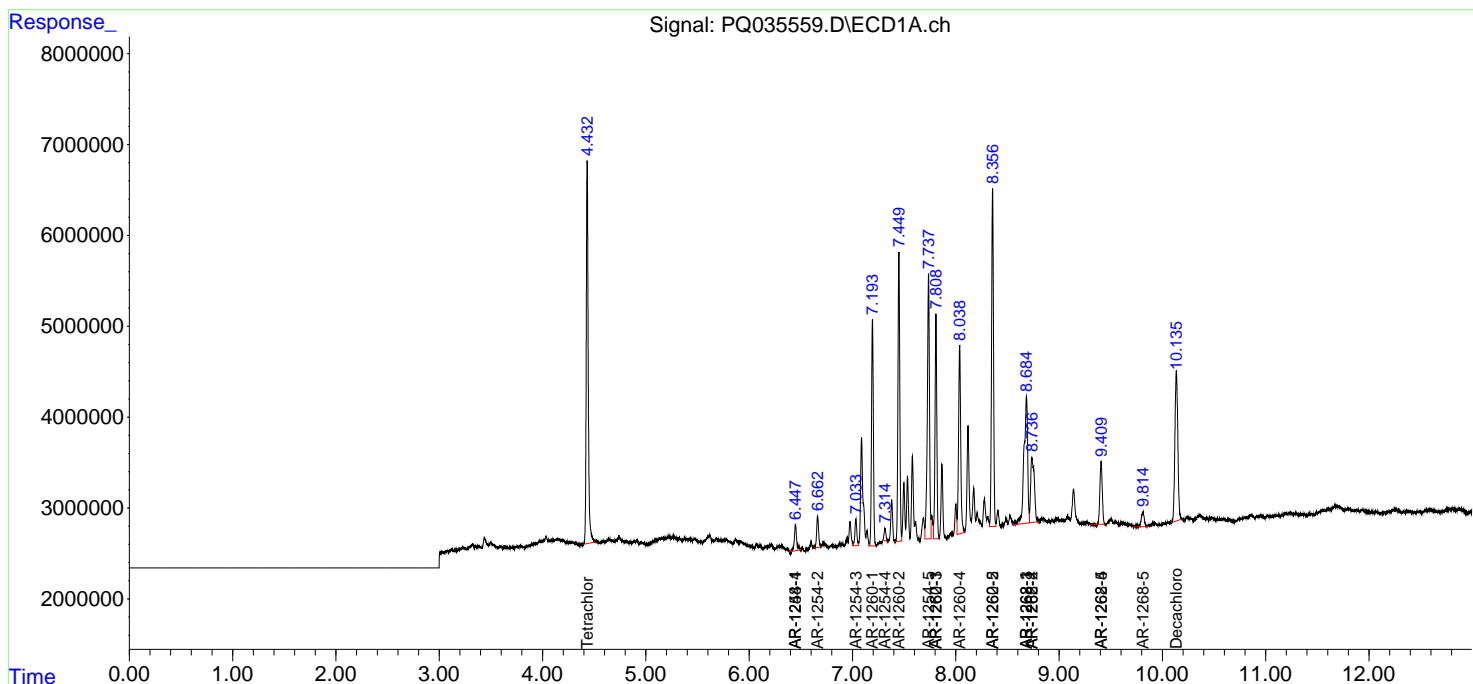
(f)=RT Delta > 1/2 Window (#)=Amounts differ by > 25% (m)=manual int.

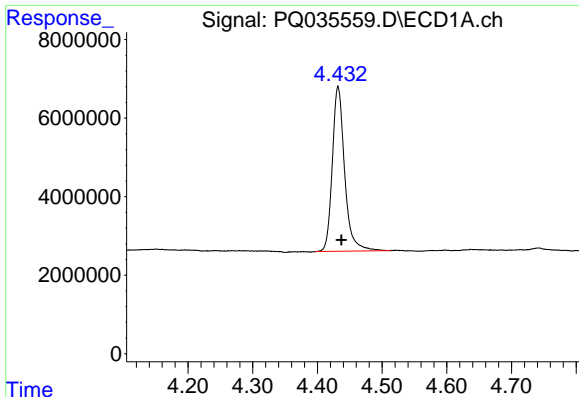
Data Path : Z:\pestpcbsrv\HPCHEM1\ECD_Q\Data\PQ121518\
 Data File : PQ035559.D
 Signal(s) : Signal #1: ECD1A.ch Signal #2: ECD2B.ch
 Acq On : 15 Dec 2018 14:45
 Operator : SM\SJ
 Sample : J6386-07
 Misc :
 ALS Vial : 62 Sample Multiplier: 1

Instrument :
 ECD_Q
 ClientSampled :

Integration File signal 1: autoint1.e
 Integration File signal 2: autoint2.e
 Quant Time: Dec 16 00:08:34 2018
 Quant Method : Z:\pestpcbsrv\HPCHEM1\ECD_Q\Method\PQ121318.M
 Quant Title : GC EXTRACTABLES
 QLast Update : Wed Dec 12 22:07:58 2018
 Response via : Initial Calibration
 Integrator: ChemStation

Volume Inj. : 2 µl
 Signal #1 Phase : ZB-MR1 Signal #2 Phase: ZB-MR2
 Signal #1 Info : 30Mx0.32mmx 0.50µ Signal #2 Info : 30M x 0.32mm x 0.25µm

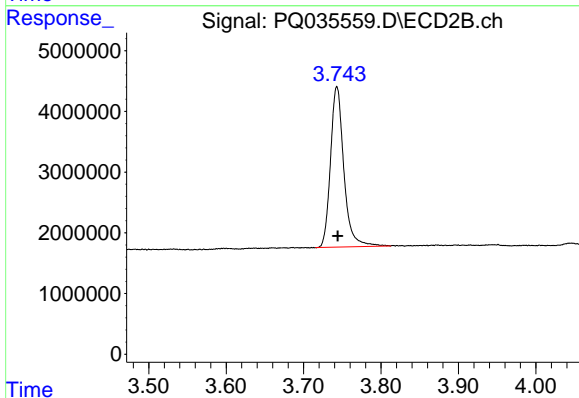




#1 Tetrachloro-m-xylene

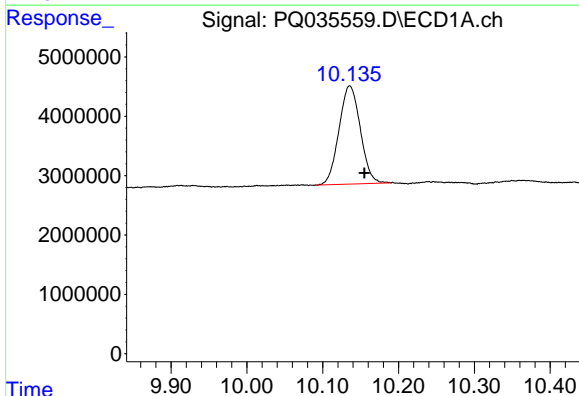
R.T.: 4.432 min
Delta R.T.: -0.005 min
Response: 55575267
Conc: 14.20 ng/ml

Instrument :
ECD_Q
ClientSampleId :



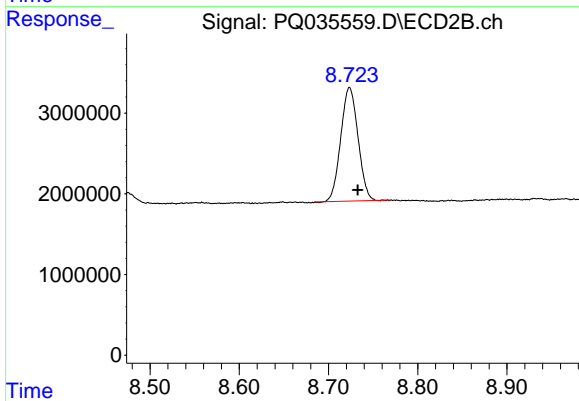
#1 Tetrachloro-m-xylene

R.T.: 3.743 min
Delta R.T.: -0.001 min
Response: 31709917
Conc: 14.19 ng/ml



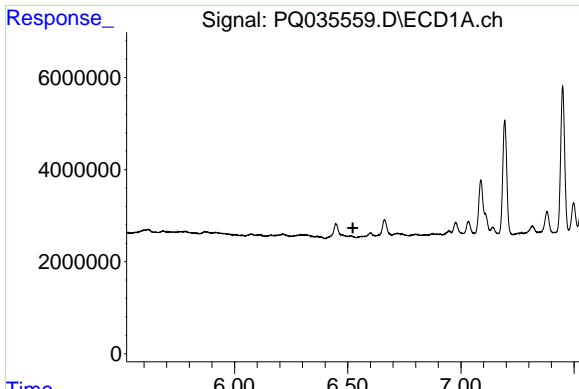
#2 Decachlorobiphenyl

R.T.: 10.136 min
Delta R.T.: -0.019 min
Response: 32345109
Conc: 10.97 ng/ml



#2 Decachlorobiphenyl

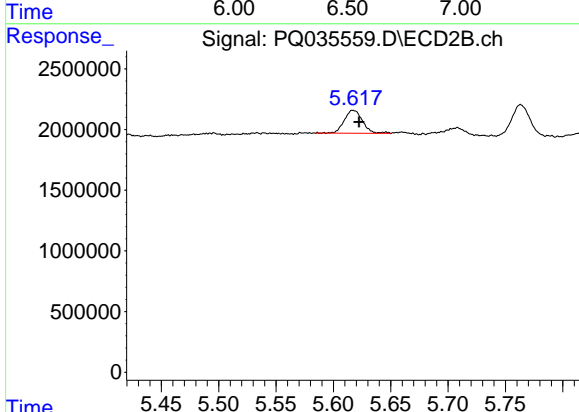
R.T.: 8.724 min
Delta R.T.: -0.009 min
Response: 18890094
Conc: 10.69 ng/ml



#20 AR-1242-5

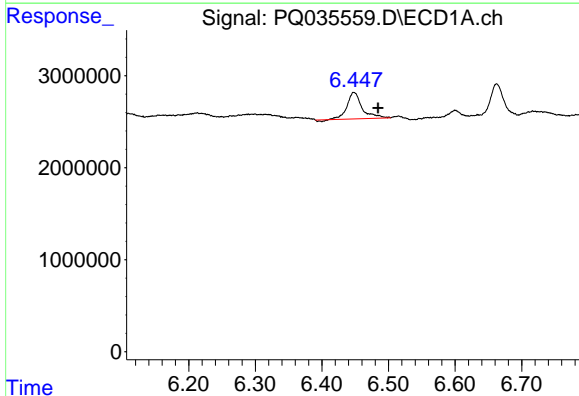
R.T.: 0.000 min
 Exp R.T.: 6.523 min
 Response: 0
 Conc: N.D.

Instrument :
 ECD_Q
 ClientSampleId :



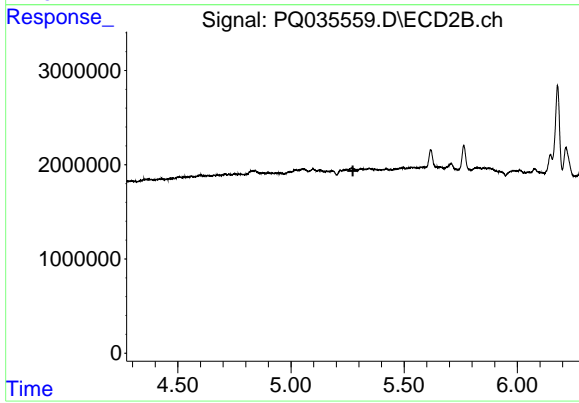
#20 AR-1242-5

R.T.: 5.617 min
 Delta R.T.: -0.005 min
 Response: 2088320
 Conc: 37.84 ng/ml



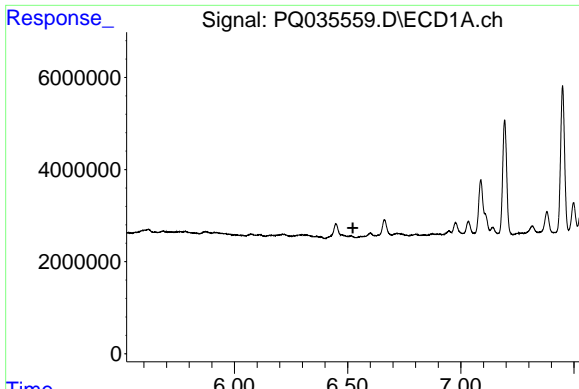
#24 AR-1248-4

R.T.: 6.448 min
 Delta R.T.: -0.036 min
 Response: 4495069
 Conc: 36.50 ng/ml



#24 AR-1248-4

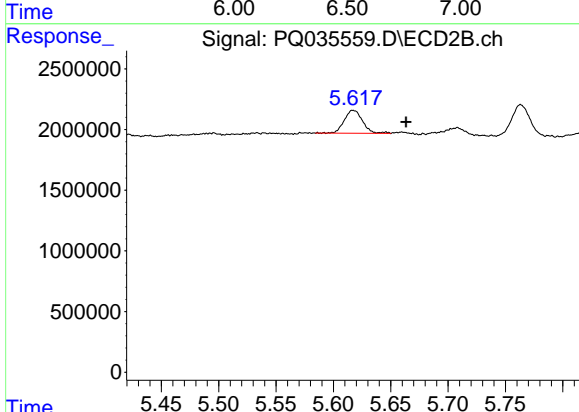
R.T.: 0.000 min
 Exp R.T.: 5.274 min
 Response: 0
 Conc: N.D.



#25 AR-1248-5

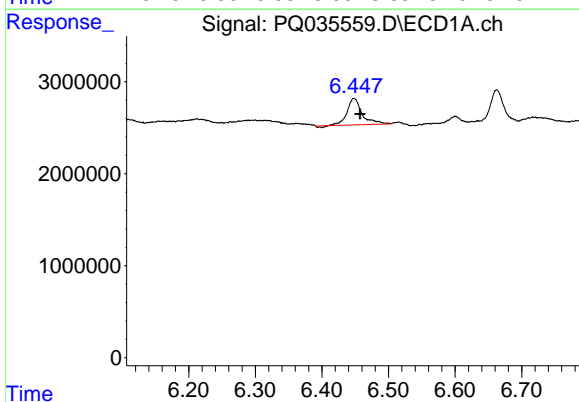
R.T.: 0.000 min
 Exp R.T.: 6.523 min
 Response: 0
 Conc: N.D.

Instrument :
 ECD_Q
 ClientSampleId :



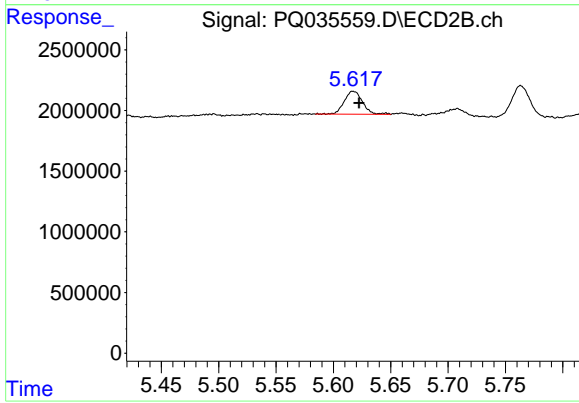
#25 AR-1248-5

R.T.: 5.617 min
 Delta R.T.: -0.046 min
 Response: 2088320
 Conc: 29.63 ng/ml



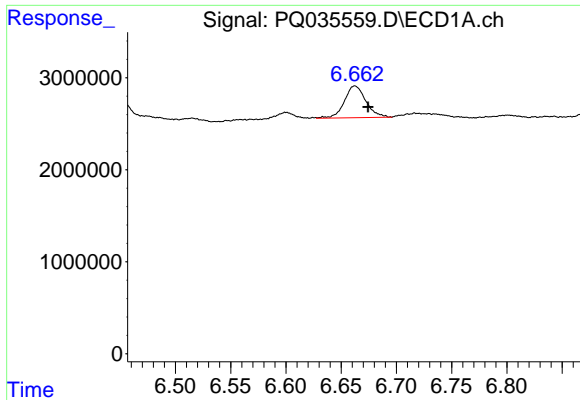
#26 AR-1254-1

R.T.: 6.448 min
 Delta R.T.: -0.009 min
 Response: 4495069
 Conc: 29.53 ng/ml



#26 AR-1254-1

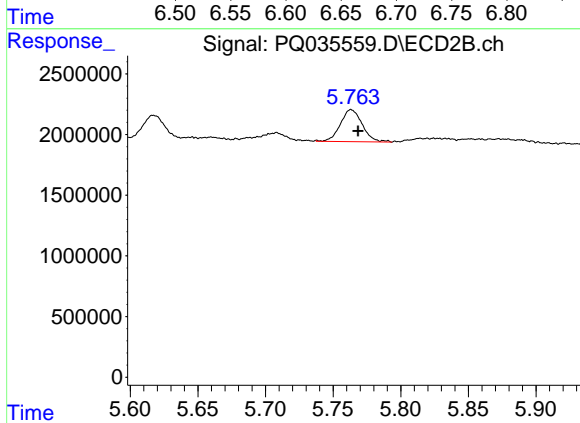
R.T.: 5.617 min
 Delta R.T.: -0.005 min
 Response: 2088320
 Conc: 15.66 ng/ml



#27 AR-1254-2

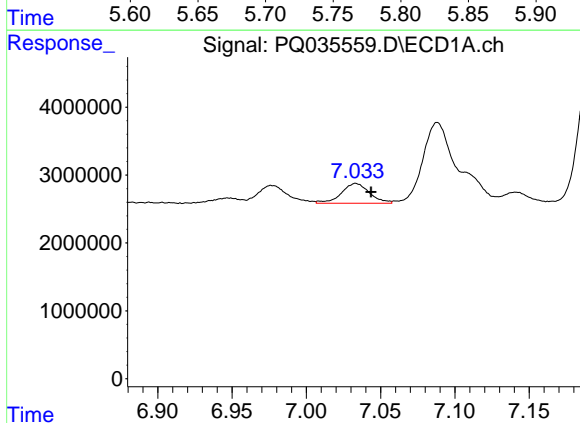
R.T.: 6.662 min
 Delta R.T.: -0.012 min
 Response: 4696294
 Conc: 19.85 ng/ml

Instrument :
 ECD_Q
 ClientSampleId :



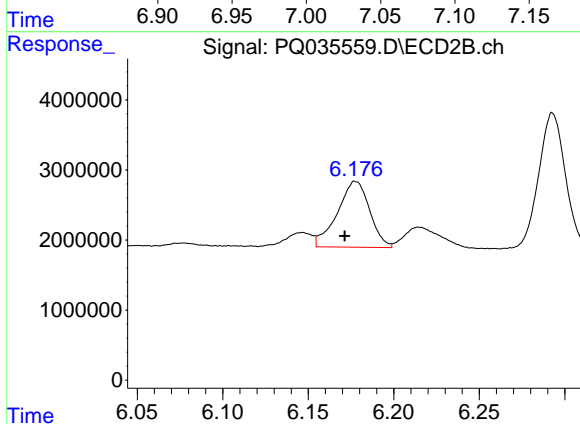
#27 AR-1254-2

R.T.: 5.763 min
 Delta R.T.: -0.005 min
 Response: 2971934
 Conc: 25.72 ng/ml



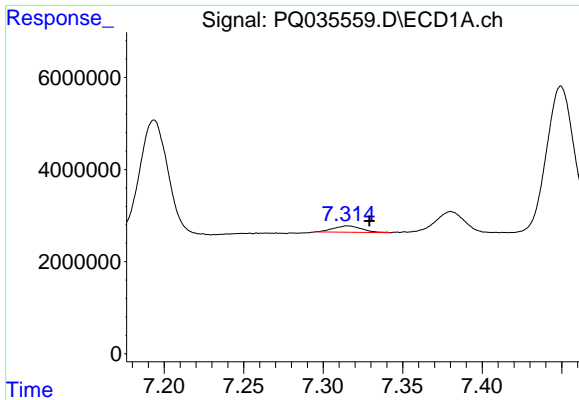
#28 AR-1254-3

R.T.: 7.033 min
 Delta R.T.: -0.010 min
 Response: 3847968
 Conc: 14.99 ng/ml



#28 AR-1254-3

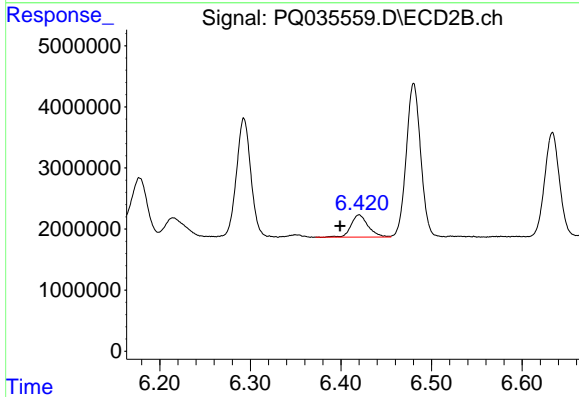
R.T.: 6.178 min
 Delta R.T.: 0.006 min
 Response: 12371994
 Conc: 64.08 ng/ml



#29 AR-1254-4

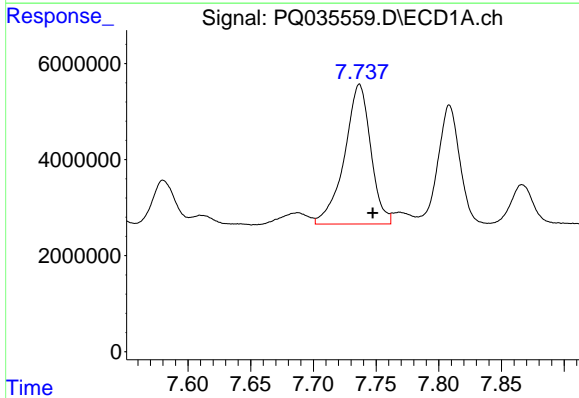
R.T.: 7.315 min
 Delta R.T.: -0.014 min
 Response: 1687241
 Conc: 9.31 ng/ml

Instrument :
 ECD_Q
 ClientSampleId :



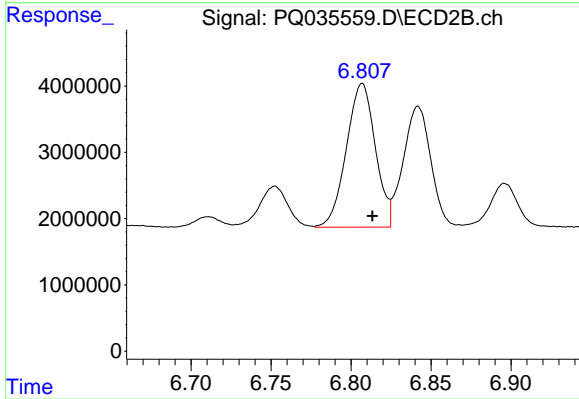
#29 AR-1254-4

R.T.: 6.420 min
 Delta R.T.: 0.021 min
 Response: 4798169
 Conc: 39.87 ng/ml



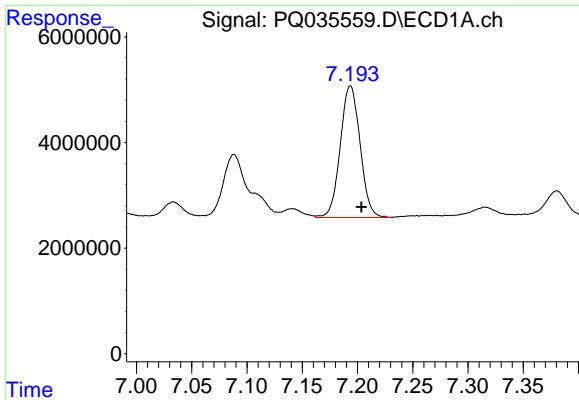
#30 AR-1254-5

R.T.: 7.737 min
 Delta R.T.: -0.011 min
 Response: 42393309
 Conc: 216.13 ng/ml



#30 AR-1254-5

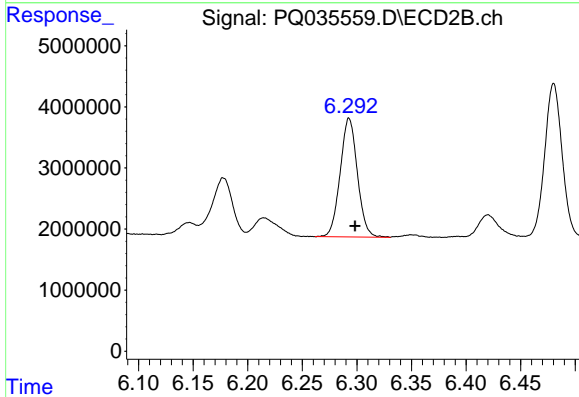
R.T.: 6.807 min
 Delta R.T.: -0.006 min
 Response: 27374241
 Conc: 168.08 ng/ml



#31 AR-1260-1

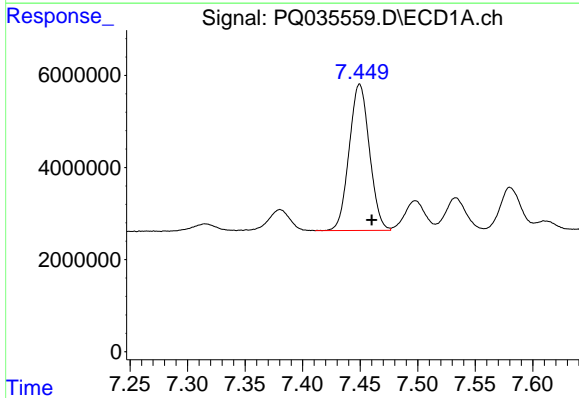
R.T.: 7.194 min
 Delta R.T.: -0.010 min
 Response: 31098328
 Conc: 168.64 ng/ml

Instrument :
 ECD_Q
 ClientSampled :



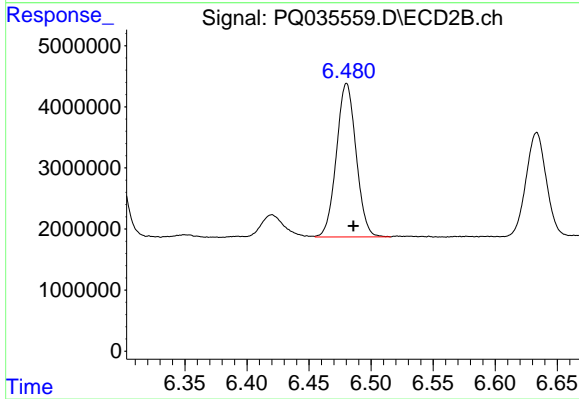
#31 AR-1260-1

R.T.: 6.293 min
 Delta R.T.: -0.006 min
 Response: 21349471
 Conc: 169.73 ng/ml



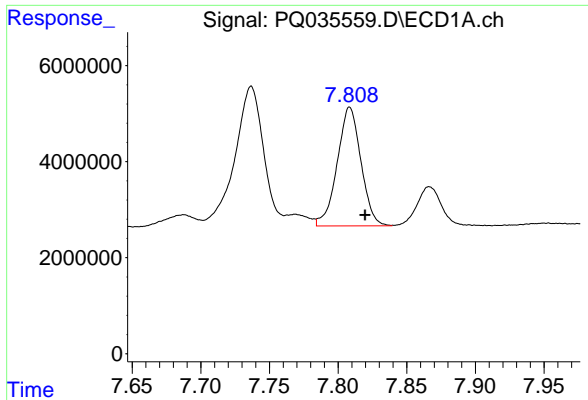
#32 AR-1260-2

R.T.: 7.450 min
 Delta R.T.: -0.011 min
 Response: 39023356
 Conc: 179.60 ng/ml



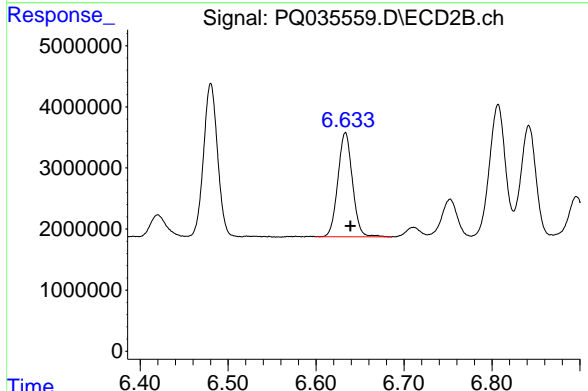
#32 AR-1260-2

R.T.: 6.480 min
 Delta R.T.: -0.005 min
 Response: 27744638
 Conc: 183.72 ng/ml

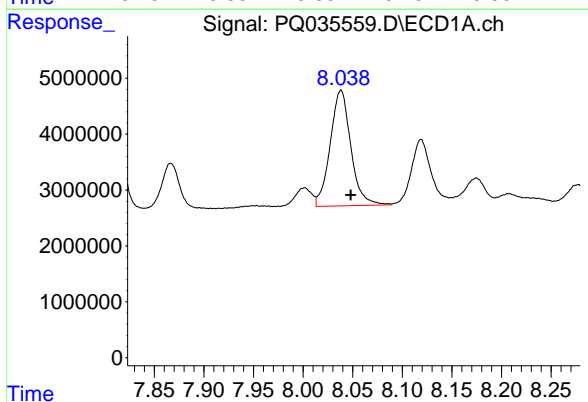


#33 AR-1260-3
 R.T.: 7.809 min
 Delta R.T.: -0.011 min
 Response: 29737429
 Conc: 221.98 ng/ml

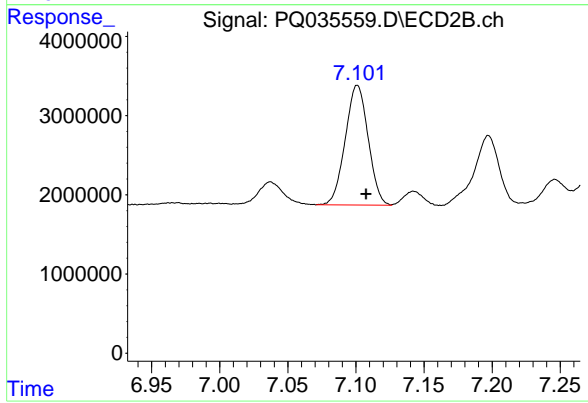
Instrument :
 ECD_Q
 ClientSampleId :



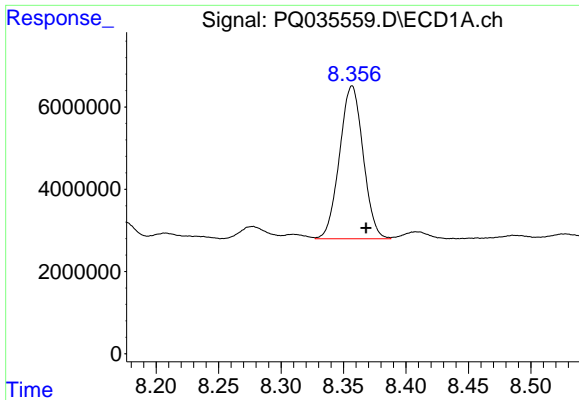
#33 AR-1260-3
 R.T.: 6.633 min
 Delta R.T.: -0.006 min
 Response: 19628557
 Conc: 140.47 ng/ml



#34 AR-1260-4
 R.T.: 8.038 min
 Delta R.T.: -0.010 min
 Response: 29959686
 Conc: 181.78 ng/ml



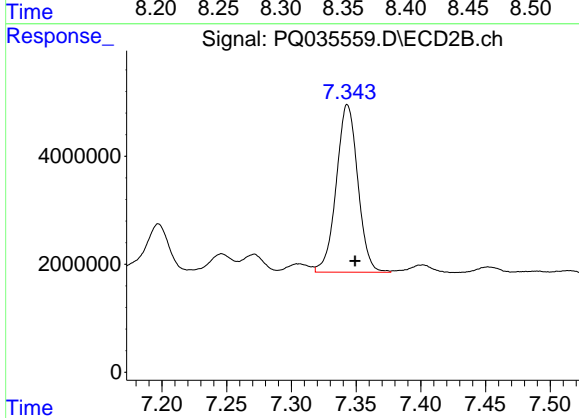
#34 AR-1260-4
 R.T.: 7.101 min
 Delta R.T.: -0.006 min
 Response: 17687580
 Conc: 190.48 ng/ml



#35 AR-1260-5

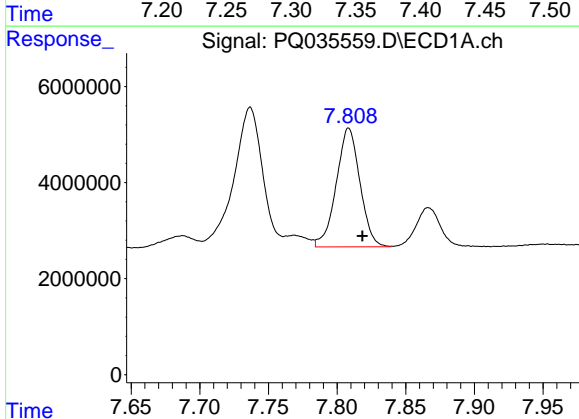
R.T.: 8.357 min
 Delta R.T.: -0.011 min
 Response: 48840865
 Conc: 163.80 ng/ml

Instrument :
 ECD_Q
 ClientSampleId :



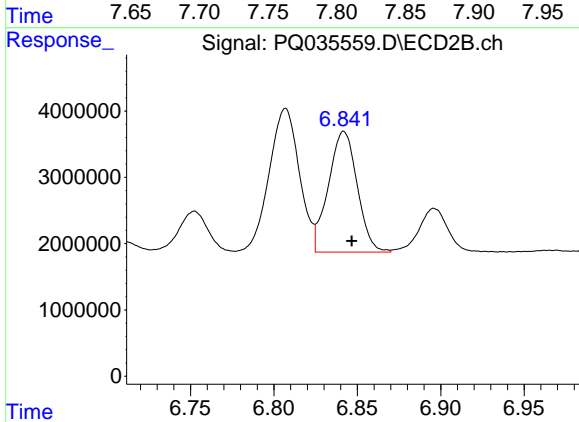
#35 AR-1260-5

R.T.: 7.343 min
 Delta R.T.: -0.006 min
 Response: 35947206
 Conc: 160.19 ng/ml



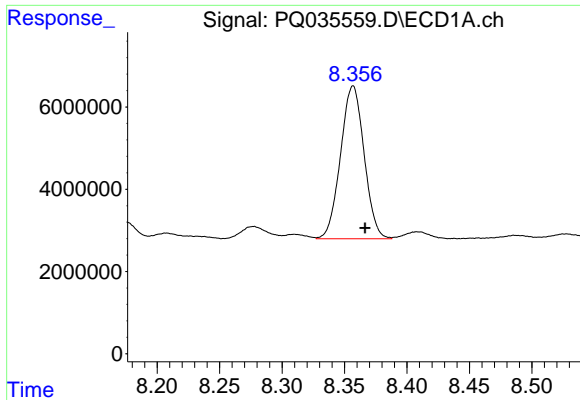
#36 AR-1262-1

R.T.: 7.809 min
 Delta R.T.: -0.010 min
 Response: 29737429
 Conc: 135.74 ng/ml



#36 AR-1262-1

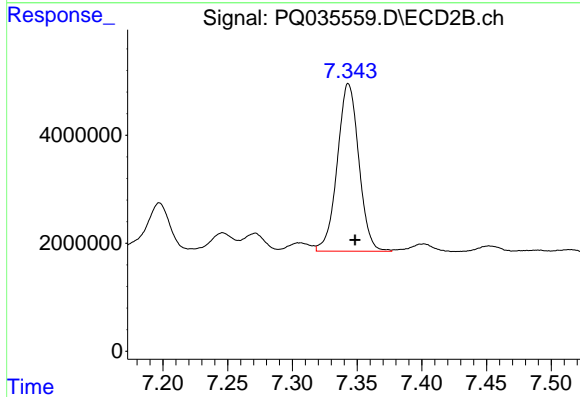
R.T.: 6.842 min
 Delta R.T.: -0.005 min
 Response: 21957494
 Conc: 143.08 ng/ml



#37 AR-1262-2

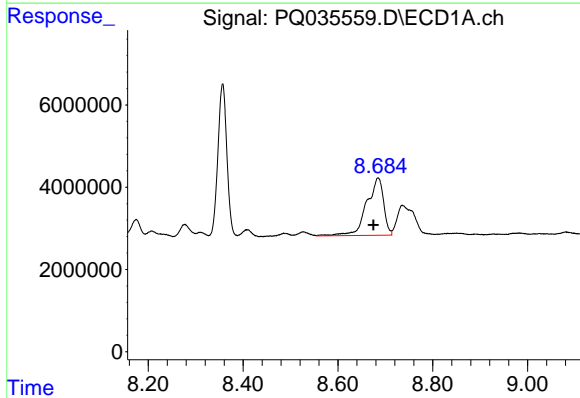
R.T.: 8.357 min
Delta R.T.: -0.010 min
Response: 48840865
Conc: 129.65 ng/ml

Instrument :
ECD_Q
ClientSampleId :



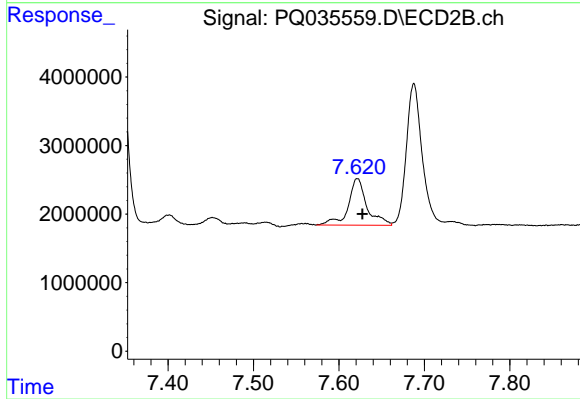
#37 AR-1262-2

R.T.: 7.343 min
Delta R.T.: -0.005 min
Response: 35947206
Conc: 134.70 ng/ml



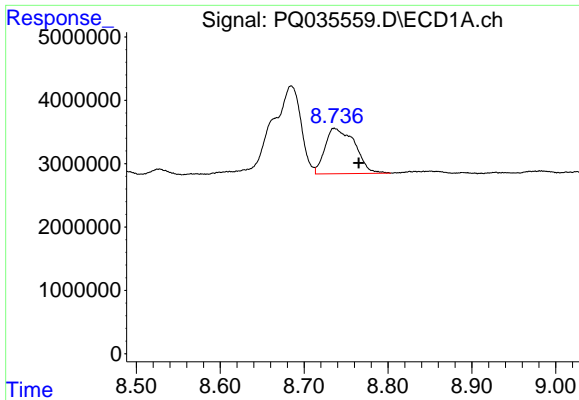
#38 AR-1262-3

R.T.: 8.685 min
Delta R.T.: 0.010 min
Response: 34660534
Conc: 144.18 ng/ml



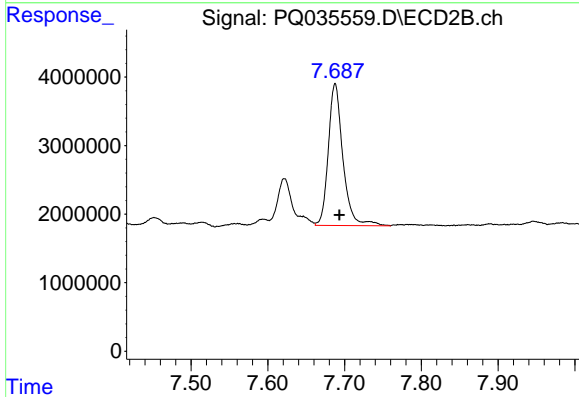
#38 AR-1262-3

R.T.: 7.622 min
Delta R.T.: -0.006 min
Response: 10369909
Conc: 99.92 ng/ml

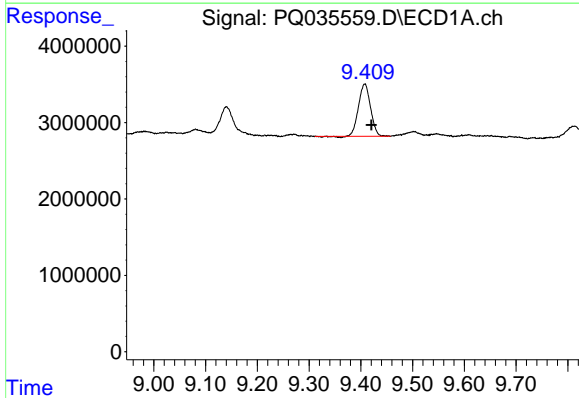


#39 AR-1262-4
 R.T.: 8.736 min
 Delta R.T.: -0.029 min
 Response: 17752978
 Conc: 98.26 ng/ml

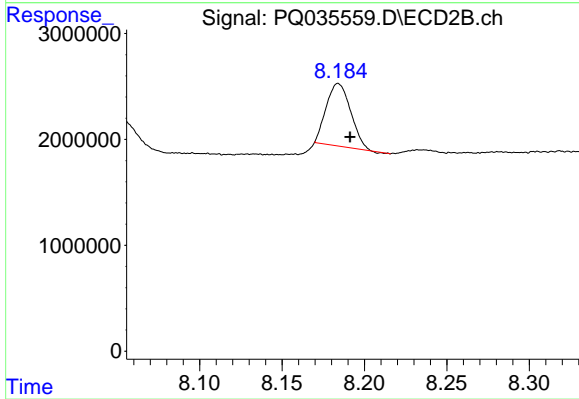
Instrument :
 ECD_Q
 ClientSampled :



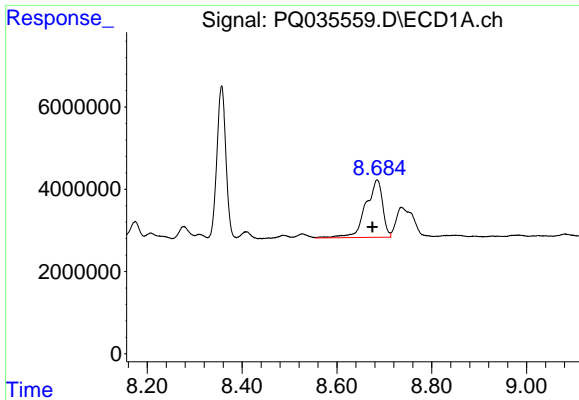
#39 AR-1262-4
 R.T.: 7.688 min
 Delta R.T.: -0.006 min
 Response: 27328161
 Conc: 147.53 ng/ml



#40 AR-1262-5
 R.T.: 9.408 min
 Delta R.T.: -0.012 min
 Response: 11007888
 Conc: 96.66 ng/ml



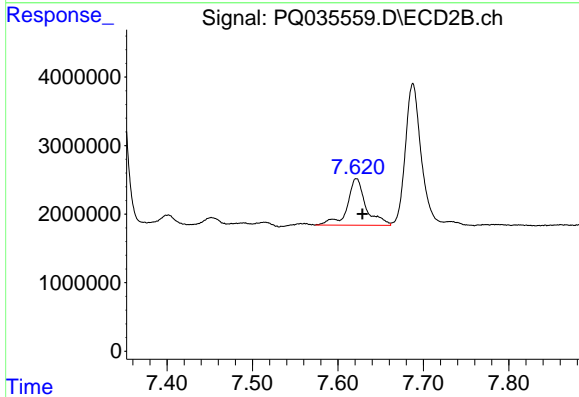
#40 AR-1262-5
 R.T.: 8.184 min
 Delta R.T.: -0.007 min
 Response: 6080177
 Conc: 81.91 ng/ml



#41 AR-1268-1

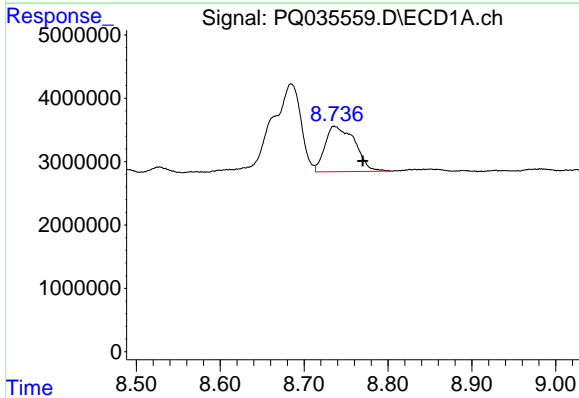
R.T.: 8.685 min
 Delta R.T.: 0.010 min
 Response: 34660534
 Conc: 71.84 ng/ml

Instrument :
 ECD_Q
 ClientSampled :



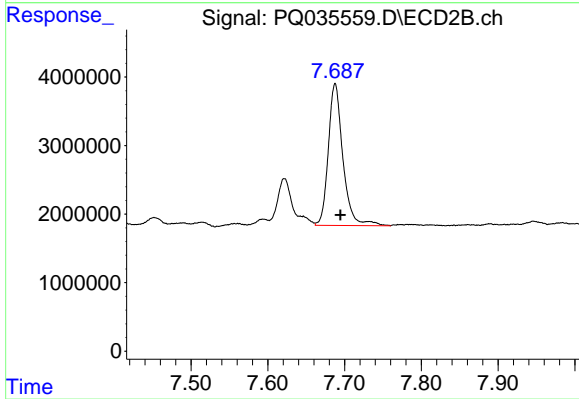
#41 AR-1268-1

R.T.: 7.622 min
 Delta R.T.: -0.007 min
 Response: 10369909
 Conc: 31.10 ng/ml



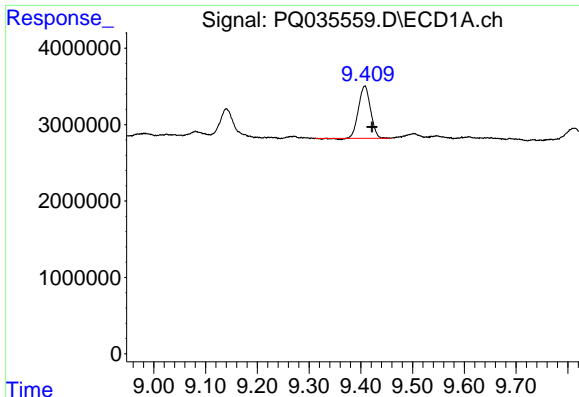
#42 AR-1268-2

R.T.: 8.736 min
 Delta R.T.: -0.034 min
 Response: 17752978
 Conc: 41.15 ng/ml



#42 AR-1268-2

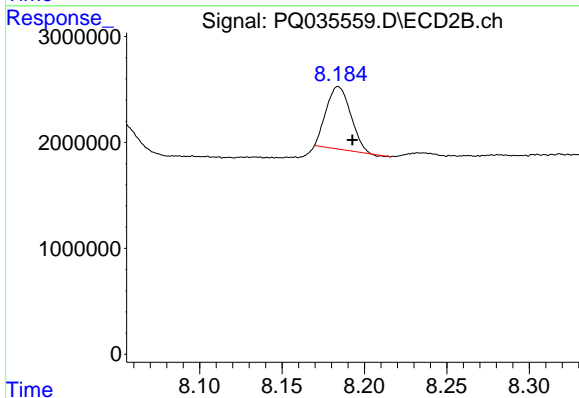
R.T.: 7.688 min
 Delta R.T.: -0.007 min
 Response: 27328161
 Conc: 92.21 ng/ml



#44 AR-1268-4

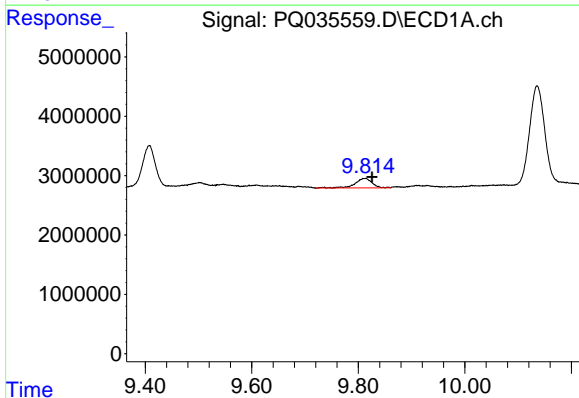
R.T.: 9.408 min
 Delta R.T.: -0.014 min
 Response: 11007888
 Conc: 80.30 ng/ml

Instrument :
 ECD_Q
 ClientSampled :



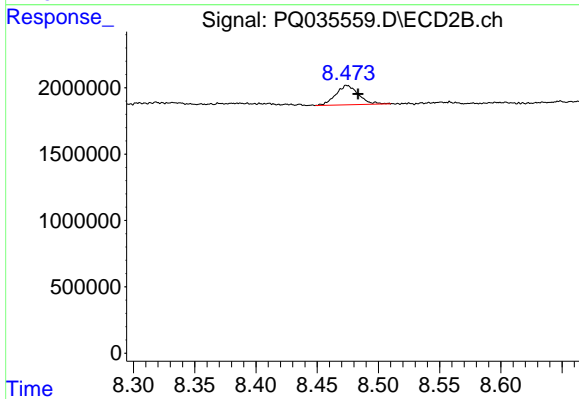
#44 AR-1268-4

R.T.: 8.184 min
 Delta R.T.: -0.008 min
 Response: 6080177
 Conc: 65.18 ng/ml



#45 AR-1268-5

R.T.: 9.813 min
 Delta R.T.: -0.013 min
 Response: 3491038
 Conc: 3.02 ng/ml



#45 AR-1268-5

R.T.: 8.474 min
 Delta R.T.: -0.009 min
 Response: 1880673
 Conc: 2.57 ng/ml