

Data Path : Z:\pestpcbsrv\HPCHEM1\ECD_Q\Data\PQ121518\
 Data File : PQ035563.D
 Signal(s) : Signal #1: ECD1A.ch Signal #2: ECD2B.ch
 Acq On : 15 Dec 2018 15:47
 Operator : SM\SJ
 Sample : J6386-11
 Misc :
 ALS Vial : 66 Sample Multiplier: 1

Instrument :
 ECD_Q
ClientSampleId :
 P001-SS006-1218-01

Manual Integrations
APPROVED
 Sohil
 12/17/2018 4:47:46 PM

Integration File signal 1: autoint1.e
 Integration File signal 2: autoint2.e
 Quant Time: Dec 16 00:10:59 2018
 Quant Method : Z:\pestpcbsrv\HPCHEM1\ECD_Q\Method\PQ121318.M
 Quant Title : GC EXTRACTABLES
 QLast Update : Wed Dec 12 22:07:58 2018
 Response via : Initial Calibration
 Integrator: ChemStation

Volume Inj. : 2 µl
 Signal #1 Phase : ZB-MR1 Signal #2 Phase: ZB-MR2
 Signal #1 Info : 30Mx0.32mmx 0.50µ Signal #2 Info : 30M x 0.32mm x 0.25µm

Compound	RT#1	RT#2	Resp#1	Resp#2	ng/ml	ng/ml

System Monitoring Compounds						
1) SA Tetrachlo...	4.431	3.742	85614887	47049833	21.882	21.057
2) SA Decachlor...	10.136	8.724	57258650	30816895	19.426	17.436
Target Compounds						
31) L7 AR-1260-1	7.194	6.293	10135.1E6	5642.3E6	54961.793	44855.967
32) L7 AR-1260-2	7.451	6.480	10754.6E6	6185.8E6	49495.698	40961.930
33) L7 AR-1260-3	7.809	6.634	7479.3E6	6143.4E6	55831.354	43964.755
34) L7 AR-1260-4	8.037	7.101	9283.6E6	4833.2E6	56329.076	52050.481
35) L7 AR-1260-5	8.357	7.343	15524.1E6	9034.4E6	52064.997	40260.695

(f)=RT Delta > 1/2 Window (#)=Amounts differ by > 25% (m)=manual int.

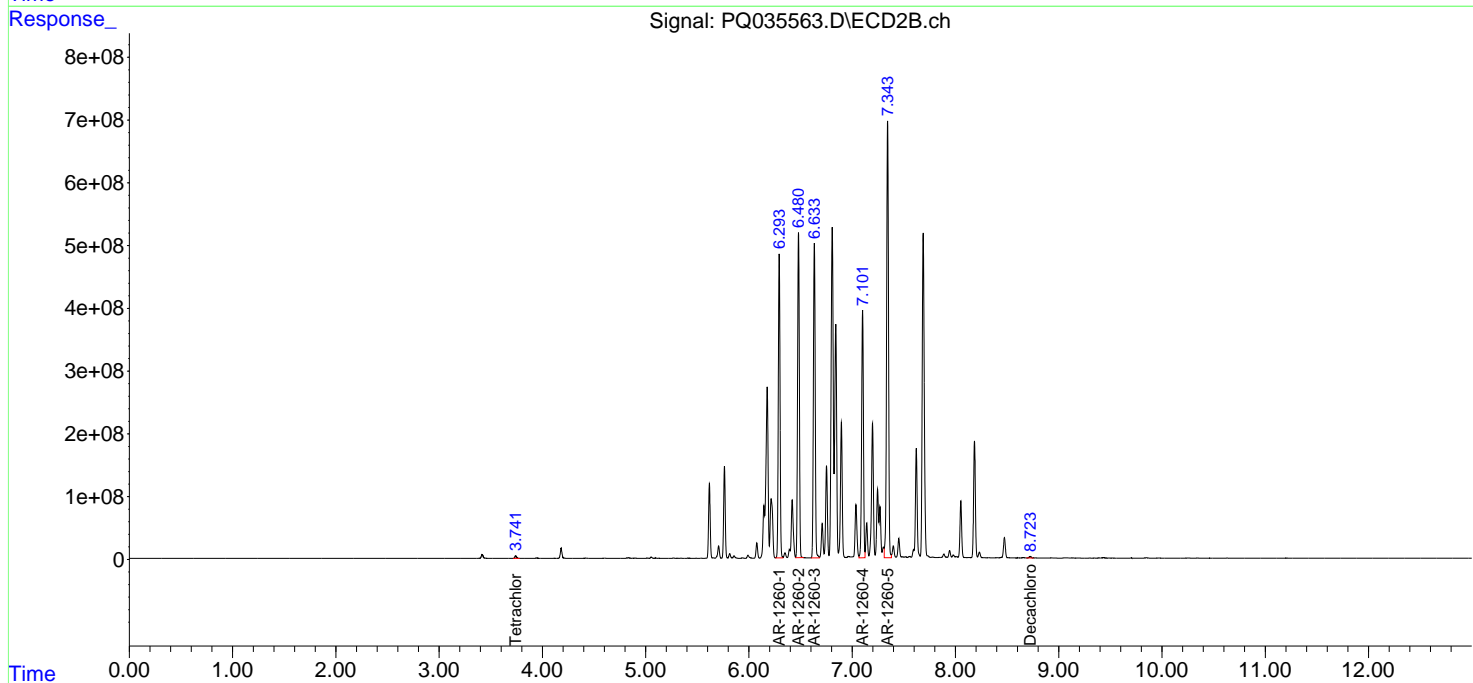
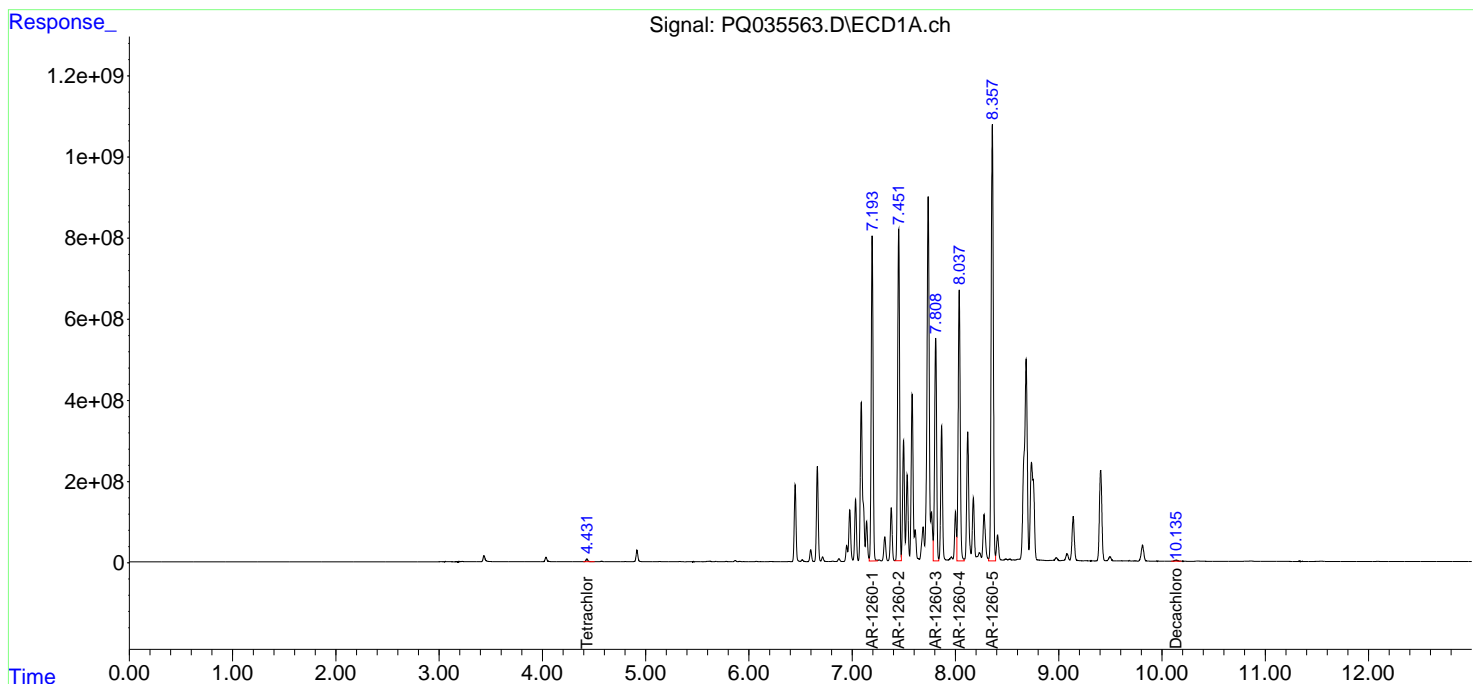
Data Path : Z:\pestpcbsrv\HPCHEM1\ECD_Q\Data\PQ121518\
 Data File : PQ035563.D
 Signal(s) : Signal #1: ECD1A.ch Signal #2: ECD2B.ch
 Acq On : 15 Dec 2018 15:47
 Operator : SM\SJ
 Sample : J6386-11
 Misc :
 ALS Vial : 66 Sample Multiplier: 1

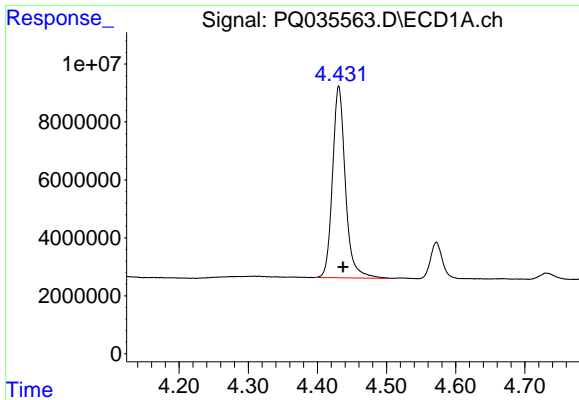
Instrument :
 ECD_Q
 ClientSampled :
 P001-SS006-1218-01

Manual Integrations
APPROVED
 Sohil
 12/17/2018 4:47:46 PM

Integration File signal 1: autoint1.e
 Integration File signal 2: autoint2.e
 Quant Time: Dec 16 00:10:59 2018
 Quant Method : Z:\pestpcbsrv\HPCHEM1\ECD_Q\Method\PQ121318.M
 Quant Title : GC EXTRACTABLES
 QLast Update : Wed Dec 12 22:07:58 2018
 Response via : Initial Calibration
 Integrator: ChemStation

Volume Inj. : 2 µl
 Signal #1 Phase : ZB-MR1 Signal #2 Phase: ZB-MR2
 Signal #1 Info : 30Mx0.32mmx 0.50µm Signal #2 Info : 30M x 0.32mm x 0.25µm

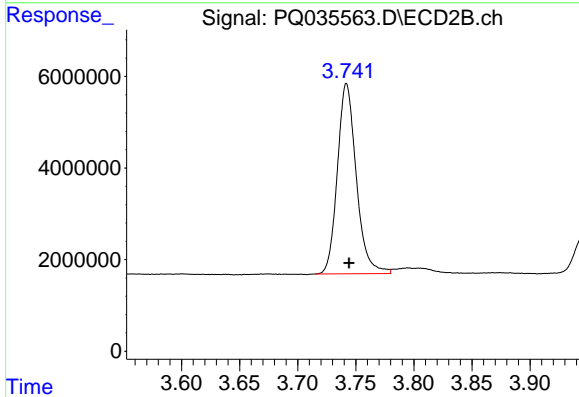




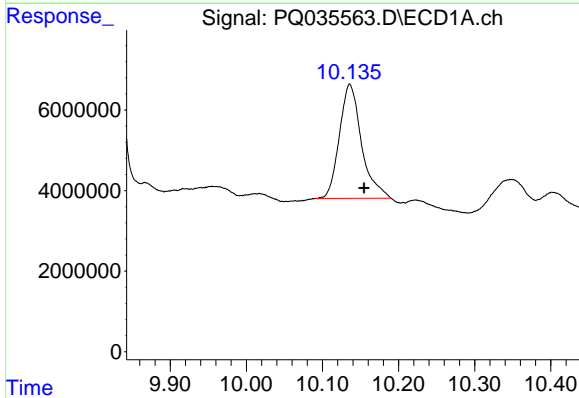
#1 Tetrachloro-m-xylene
 R.T.: 4.431 min
 Delta R.T.: -0.006 min
 Response: 85614887
 Conc: 21.88 ng/ml

Instrument :
 ECD_Q
 ClientSampled :
 P001-SS006-1218-01

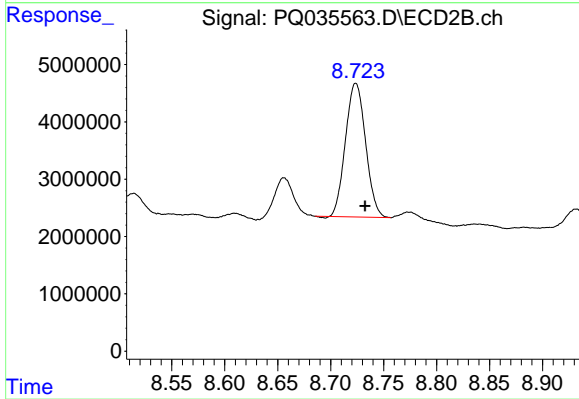
Manual Integrations
 APPROVED
 Sohil
 12/17/2018 4:47:46 PM



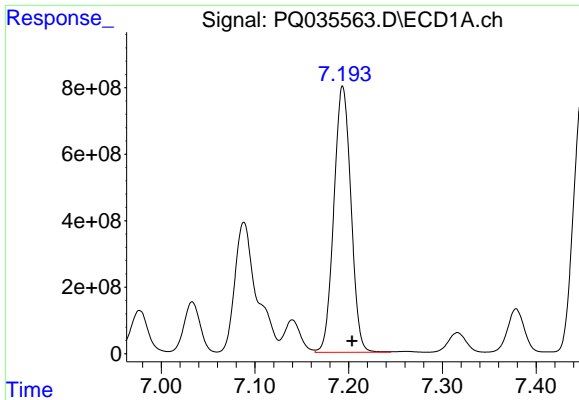
#1 Tetrachloro-m-xylene
 R.T.: 3.742 min
 Delta R.T.: -0.002 min
 Response: 47049833
 Conc: 21.06 ng/ml



#2 Decachlorobiphenyl
 R.T.: 10.136 min
 Delta R.T.: -0.019 min
 Response: 57258650
 Conc: 19.43 ng/ml



#2 Decachlorobiphenyl
 R.T.: 8.724 min
 Delta R.T.: -0.009 min
 Response: 30816895
 Conc: 17.44 ng/ml



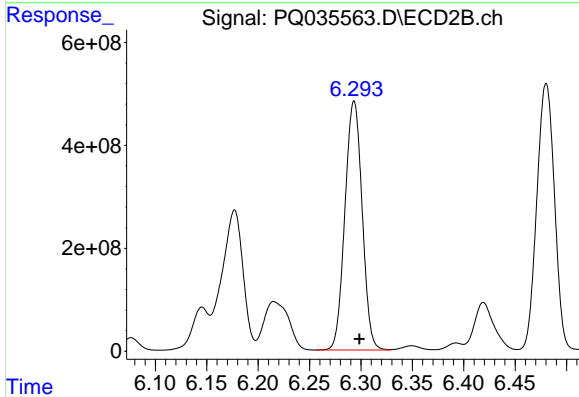
#31 AR-1260-1

R.T.: 7.194 min
 Delta R.T.: -0.010 min
 Response: 10135065312
 Conc: 54961.79 ng/ml

Instrument :
 ECD_Q
 ClientSampled :
 P001-SS006-1218-01

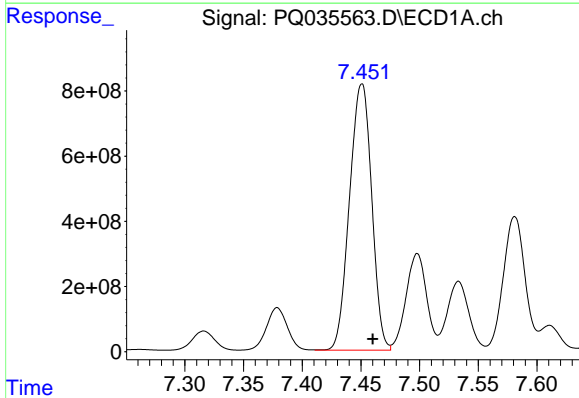
Manual Integrations
 APPROVED

Sohil
 12/17/2018 4:47:46 PM



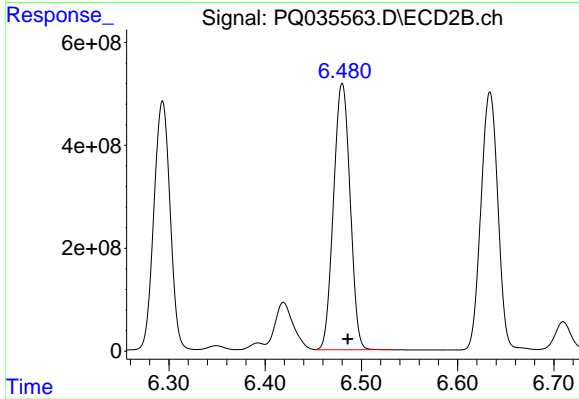
#31 AR-1260-1

R.T.: 6.293 min
 Delta R.T.: -0.005 min
 Response: 5642313253
 Conc: 44855.97 ng/ml



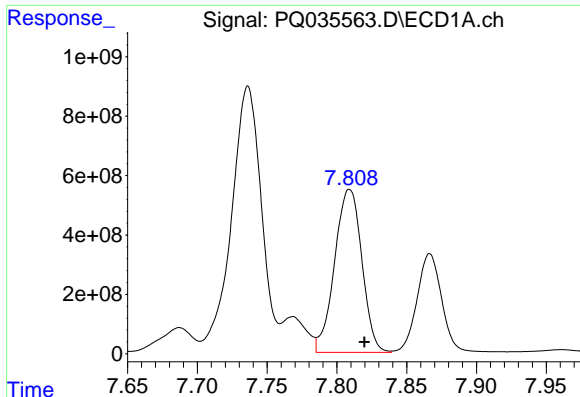
#32 AR-1260-2

R.T.: 7.451 min
 Delta R.T.: -0.009 min
 Response: 10754624566
 Conc: 49495.70 ng/ml



#32 AR-1260-2

R.T.: 6.480 min
 Delta R.T.: -0.006 min
 Response: 6185788452
 Conc: 40961.93 ng/ml



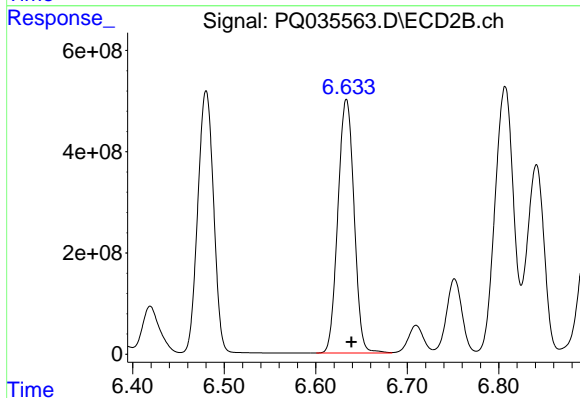
#33 AR-1260-3

R.T.: 7.809 min
 Delta R.T.: -0.011 min
 Response: 7479286287
 Conc: 55831.35 ng/ml

Instrument :
 ECD_Q
 ClientSampled :
 P001-SS006-1218-01

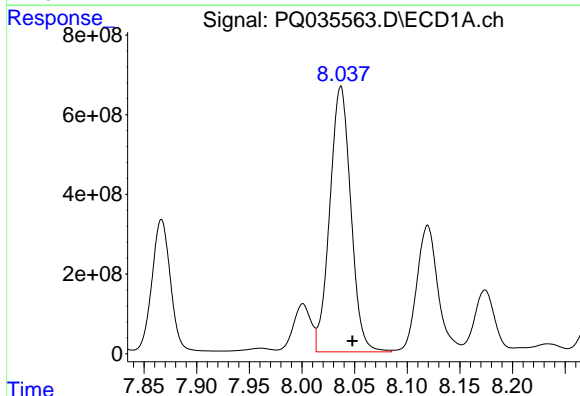
Manual Integrations
 APPROVED

Sohil
 12/17/2018 4:47:46 PM



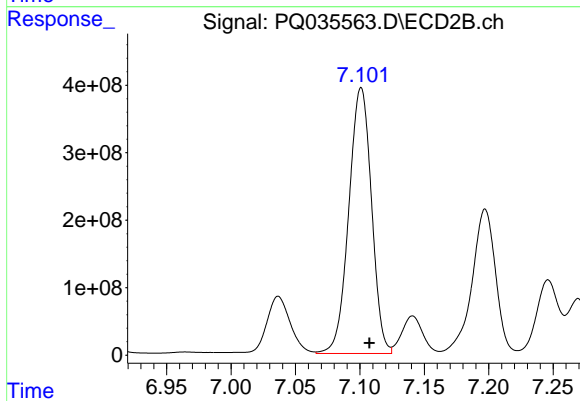
#33 AR-1260-3

R.T.: 6.634 min
 Delta R.T.: -0.006 min
 Response: 6143394421
 Conc: 43964.75 ng/ml



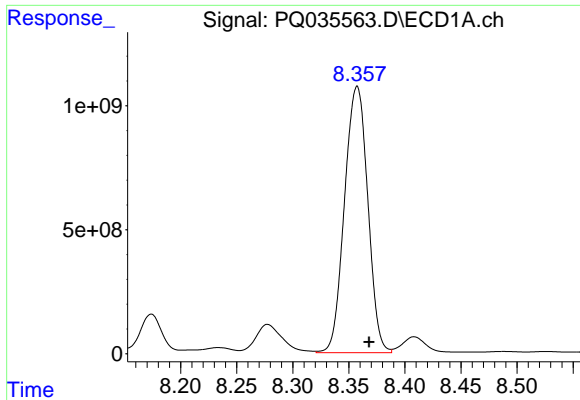
#34 AR-1260-4

R.T.: 8.037 min
 Delta R.T.: -0.011 min
 Response: 9283633010
 Conc: 56329.08 ng/ml



#34 AR-1260-4

R.T.: 7.101 min
 Delta R.T.: -0.006 min
 Response: 4833186239
 Conc: 52050.48 ng/ml



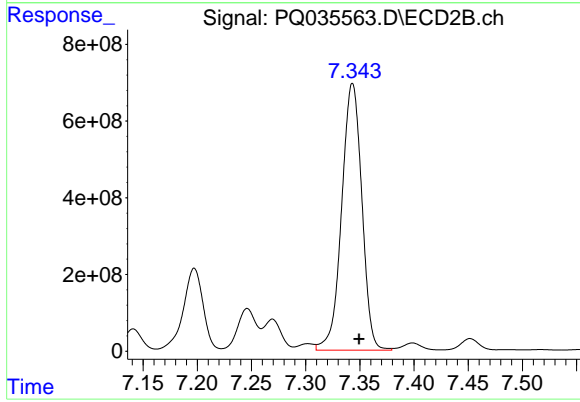
#35 AR-1260-5

R.T.: 8.357 min
Delta R.T.: -0.011 min
Response: 15524065731
Conc: 52065.00 ng/ml

Instrument :
ECD_Q
ClientSampleId :
P001-SS006-1218-01

Manual Integrations
APPROVED

Sohil
12/17/2018 4:47:46 PM



#35 AR-1260-5

R.T.: 7.343 min
Delta R.T.: -0.006 min
Response: 9034399611
Conc: 40260.69 ng/ml