

Data Path : Z:\pestpcbsrv\HPCHEM1\ECD\_Q\Data\PQ121518\  
 Data File : PQ035576.D  
 Signal(s) : Signal #1: ECD1A.ch Signal #2: ECD2B.ch  
 Acq On : 15 Dec 2018 19:09  
 Operator : SM\SJ  
 Sample : I.BLK  
 Misc :  
 ALS Vial : 2 Sample Multiplier: 1

Instrument :  
 ECD\_Q  
 ClientSampleId :  
 I.BLK

Integration File signal 1: autoint1.e  
 Integration File signal 2: autoint2.e  
 Quant Time: Dec 16 00:21:39 2018  
 Quant Method : Z:\pestpcbsrv\HPCHEM1\ECD\_Q\Method\PQ121318.M  
 Quant Title : GC EXTRACTABLES  
 QLast Update : Wed Dec 12 22:07:58 2018  
 Response via : Initial Calibration  
 Integrator: ChemStation

Volume Inj. : 2 µl  
 Signal #1 Phase : ZB-MR1 Signal #2 Phase: ZB-MR2  
 Signal #1 Info : 30Mx0.32mmx 0.50µ Signal #2 Info : 30M x 0.32mm x 0.25µm

Compound	RT#1	RT#2	Resp#1	Resp#2	ng/ml	ng/ml
-----						
System Monitoring Compounds						
1) SA Tetrachlo...	4.432	3.744	85193263	55006839	21.774	24.618
2) SA Decachlor...	10.137	8.725	60200461	32983067	20.424	18.661

Target Compounds

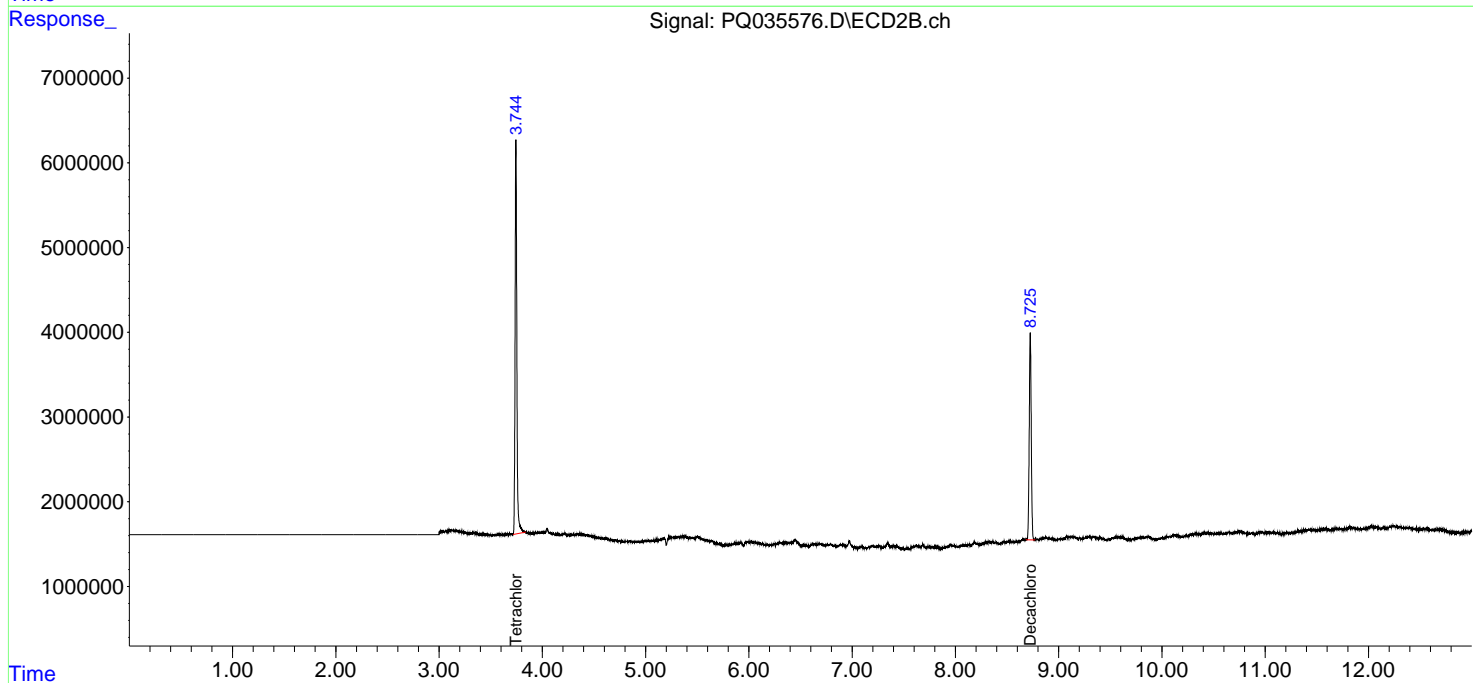
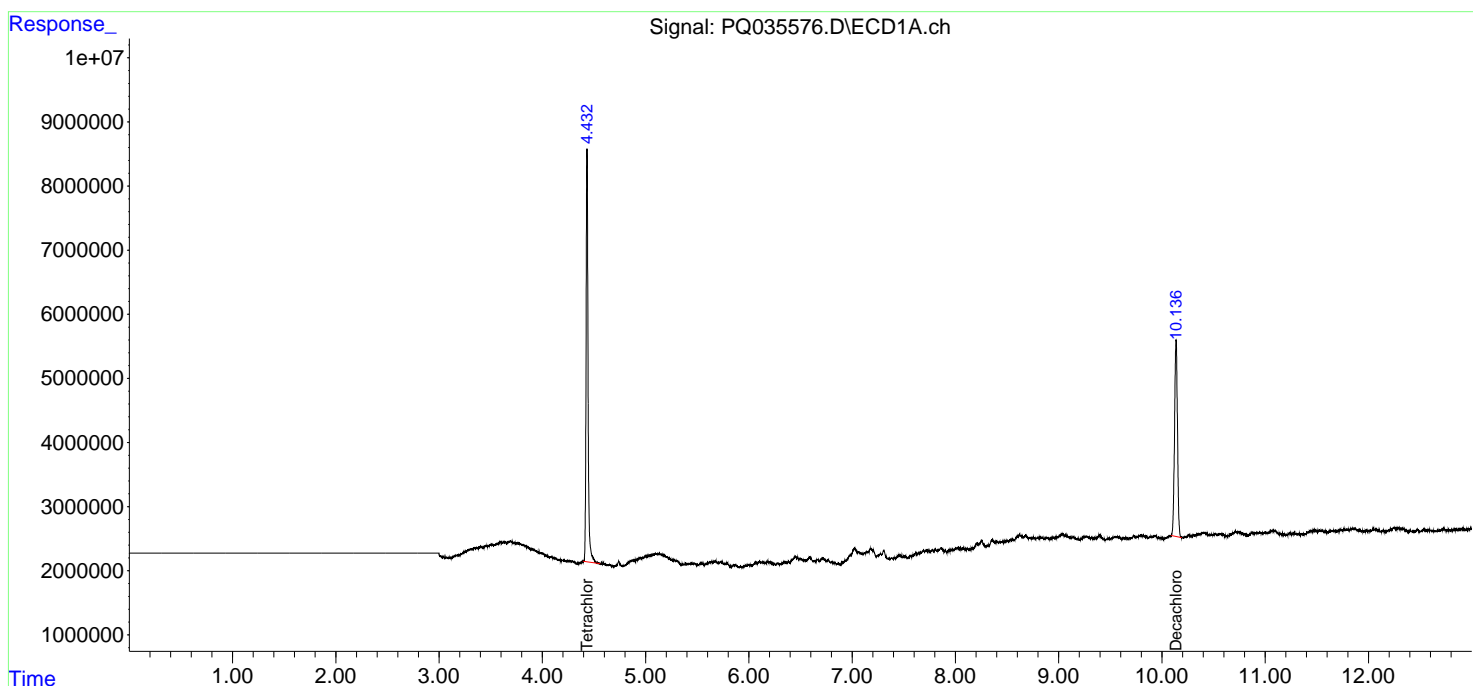
(f)=RT Delta > 1/2 Window (#)=Amounts differ by > 25% (m)=manual int.

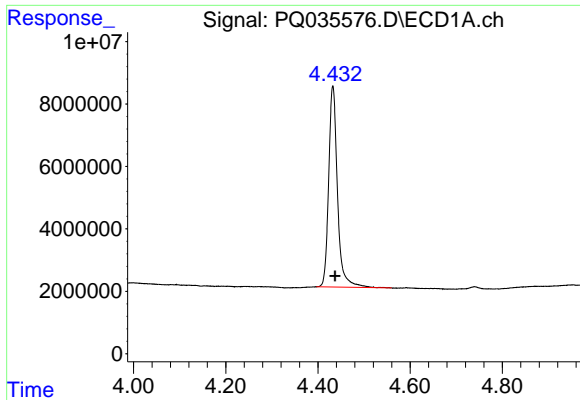
Data Path : Z:\pestpcbsrv\HPCHEM1\ECD\_Q\Data\PQ121518\  
 Data File : PQ035576.D  
 Signal(s) : Signal #1: ECD1A.ch Signal #2: ECD2B.ch  
 Acq On : 15 Dec 2018 19:09  
 Operator : SM\SJ  
 Sample : I.BLK  
 Misc :  
 ALS Vial : 2 Sample Multiplier: 1

Instrument :  
 ECD\_Q  
 ClientSampleId :  
 I.BLK

Integration File signal 1: autoint1.e  
 Integration File signal 2: autoint2.e  
 Quant Time: Dec 16 00:21:39 2018  
 Quant Method : Z:\pestpcbsrv\HPCHEM1\ECD\_Q\Method\PQ121318.M  
 Quant Title : GC EXTRACTABLES  
 QLast Update : Wed Dec 12 22:07:58 2018  
 Response via : Initial Calibration  
 Integrator: ChemStation

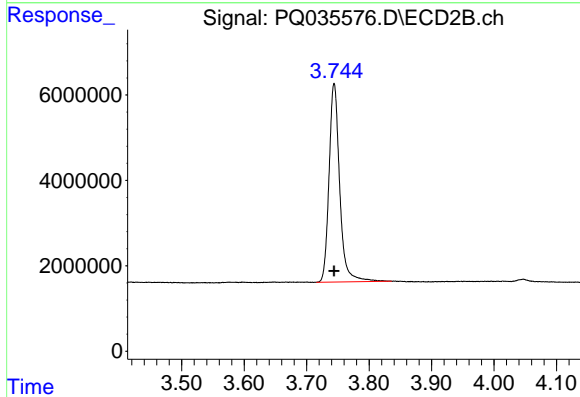
Volume Inj. : 2 µl  
 Signal #1 Phase : ZB-MR1 Signal #2 Phase: ZB-MR2  
 Signal #1 Info : 30Mx0.32mmx 0.50µm Signal #2 Info : 30M x 0.32mm x 0.25µm



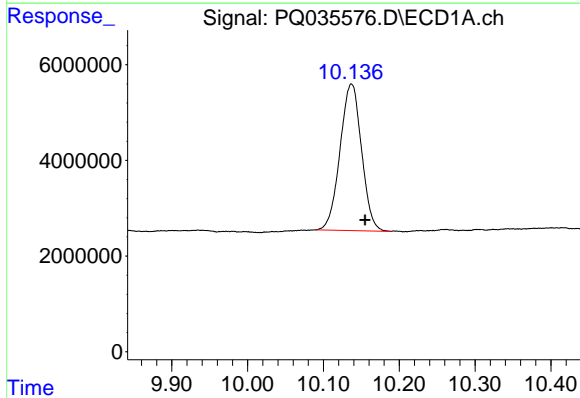


#1 Tetrachloro-m-xylene  
 R.T.: 4.432 min  
 Delta R.T.: -0.005 min  
 Response: 85193263  
 Conc: 21.77 ng/ml

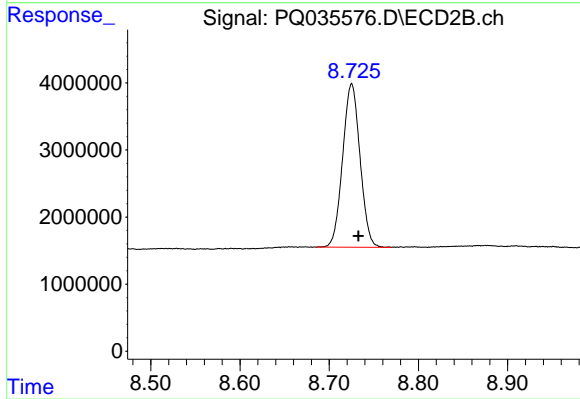
Instrument :  
 ECD\_Q  
 ClientSampled :  
 I.BLK



#1 Tetrachloro-m-xylene  
 R.T.: 3.744 min  
 Delta R.T.: 0.000 min  
 Response: 55006839  
 Conc: 24.62 ng/ml



#2 Decachlorobiphenyl  
 R.T.: 10.137 min  
 Delta R.T.: -0.018 min  
 Response: 60200461  
 Conc: 20.42 ng/ml



#2 Decachlorobiphenyl  
 R.T.: 8.725 min  
 Delta R.T.: -0.007 min  
 Response: 32983067  
 Conc: 18.66 ng/ml