

Data Path : Z:\pestpcbsrv\HPCHEM1\ECD\_Q\Data\PQ121523\  
 Data File : PQ064549.D  
 Signal(s) : Signal #1: ECD1A.ch Signal #2: ECD2B.ch  
 Acq On : 15 Dec 2023 11:23  
 Operator : YP\AJ  
 Sample : 05557-12  
 Misc :  
 ALS Vial : 7 Sample Multiplier: 1

Instrument :  
 ECD\_Q  
 ClientSampleId :

Integration File signal 1: autoint1.e  
 Integration File signal 2: autoint2.e  
 Quant Time: Dec 15 13:36:00 2023  
 Quant Method : Z:\pestpcbsrv\HPCHEM1\ECD\_Q\Method\PQ120823.M  
 Quant Title : GC EXTRACTABLES  
 QLast Update : Sat Dec 09 05:18:21 2023  
 Response via : Initial Calibration  
 Integrator: ChemStation

Volume Inj. : 2 µl  
 Signal #1 Phase : ZB-MR1 Signal #2 Phase: ZB-MR2  
 Signal #1 Info : 30Mx0.32mmx 0.50µ Signal #2 Info : 30M x 0.32mm x 0.25µm

Compound	RT#1	RT#2	Resp#1	Resp#2	ng/ml	ng/ml
-----						
System Monitoring Compounds						
1) SA Tetrachlo...	3.458	2.773	73735897	85991665	17.774	20.482
2) SA Decachlor...	8.692	7.564	33094397	95757937	11.289	23.725 #
Target Compounds						
3) L1 AR-1016-1	4.601f	3.780	2625462	235151	20.607	1.935 #
4) L1 AR-1016-2	4.601	3.800	2625462	117362	13.679	0.640 #
5) L1 AR-1016-3	4.658	3.963	1017496	380776	8.575	3.913 #
6) L1 AR-1016-4	4.762	4.007	1171243	1943475	12.610	23.272 #
7) L1 AR-1016-5	5.036	4.203	2952283	4966417	30.303	49.056 #
8) L2 AR-1221-1	3.650	2.966	27598310	799374	543.557	14.117 #
9) L2 AR-1221-2	3.739	3.042	1868337	2180901	50.994	51.772
10) L2 AR-1221-3	3.822	3.126	1306291	145997	11.551	1.146 #
11) L3 AR-1232-1	3.822	3.126	1306291	145997	15.136	1.516 #
12) L3 AR-1232-2	4.312	3.800	7573348	117362	155.247	1.404 #
13) L3 AR-1232-3	4.601	3.963	2625462	380776	30.757	8.552 #
14) L3 AR-1232-4	4.762	4.045	1171243	1381622	28.430	36.166 #
15) L3 AR-1232-5	4.849	4.203	1296490	4966417	42.403	116.697 #
16) L4 AR-1242-1	4.601f	3.780	2625462	235151	25.333	2.266 #
17) L4 AR-1242-2	4.601	3.800	2625462	117362	16.923	0.760 #
18) L4 AR-1242-3	4.658	3.963	1017496	380776	10.505	4.643 #
19) L4 AR-1242-4	4.762	4.045	1171243	1381622	15.407	17.707
20) L4 AR-1242-5	5.466	4.542	28270748	24133458	340.549	250.258 #
21) L5 AR-1248-1	4.601f	3.780	2625462	235151	33.713	2.906 #
22) L5 AR-1248-2	4.849	4.007	1296490	1943475	11.617	15.854 #
23) L5 AR-1248-3	5.036	4.045	2952283	1381622	22.184	11.840 #
24) L5 AR-1248-4	5.432	4.203	18749447	4966417	131.001	35.428 #
25) L5 AR-1248-5	5.466	4.580	28270748	11298483	201.620	84.907 #
26) L6 AR-1254-1	5.406	4.542	15898951	24133458	103.801	115.259
27) L6 AR-1254-2	5.619	4.689	15655750	64874096	67.045	350.706 #
28) L6 AR-1254-3	5.978	5.073	52168486	83093379	212.244	293.710 #
29) L6 AR-1254-4	6.265	5.301	43716248	51846916	251.603	279.278
30) L6 AR-1254-5	6.680	5.708	187.7E6	241.2E6	972.743	928.809
31) L7 AR-1260-1	6.141	5.203	95026014	71526416	507.424	369.855 #
32) L7 AR-1260-2	6.406	5.394	98304718	106.8E6	453.438	458.762
33) L7 AR-1260-3	6.758	5.532	43231350	58960951	265.235	271.249
34) L7 AR-1260-4	6.958	5.999	87086668	26610468	507.650	144.466 #
35) L7 AR-1260-5	7.293	6.247	45033063	74478635	133.289	171.758 #
36) L8 AR-1262-1	6.758	5.818	43231350	31624311	175.727	277.640 #
37) L8 AR-1262-2	7.293	5.999	45033063	26610468	112.330	104.462
38) L8 AR-1262-3	7.573	6.524	37382601	11249758	138.212	49.956 #
39) L8 AR-1262-4	7.642	6.580	6212940	81315661	29.439	187.889 #
40) L8 AR-1262-5	8.153	7.082	7794544	13619665	57.188	51.882
41) L9 AR-1268-1	7.573	6.524	37382601	11249758	78.159	17.089 #

Data Path : Z:\pestpcbsrv\HPCHEM1\ECD\_Q\Data\PQ121523\  
 Data File : PQ064549.D  
 Signal(s) : Signal #1: ECD1A.ch Signal #2: ECD2B.ch  
 Acq On : 15 Dec 2023 11:23  
 Operator : YP\AJ  
 Sample : 05557-12  
 Misc :  
 ALS Vial : 7 Sample Multiplier: 1

Instrument :  
 ECD\_Q  
 ClientSampleId :

Integration File signal 1: autoint1.e  
 Integration File signal 2: autoint2.e  
 Quant Time: Dec 15 13:36:00 2023  
 Quant Method : Z:\pestpcbsrv\HPCHEM1\ECD\_Q\Method\PQ120823.M  
 Quant Title : GC EXTRACTABLES  
 QLast Update : Sat Dec 09 05:18:21 2023  
 Response via : Initial Calibration  
 Integrator: ChemStation

Volume Inj. : 2 µl  
 Signal #1 Phase : ZB-MR1 Signal #2 Phase: ZB-MR2  
 Signal #1 Info : 30Mx0.32mmx 0.50µ Signal #2 Info : 30M x 0.32mm x 0.25µm

	Compound	RT#1	RT#2	Resp#1	Resp#2	ng/ml	ng/ml
42)	L9 AR-1268-2	7.642	6.580	6212940	81315661	14.287	130.980 #
43)	L9 AR-1268-3	7.827	6.790	3268469	5113152	8.648	7.988
44)	L9 AR-1268-4	8.153	7.082	7794544	13619665	50.923	45.258

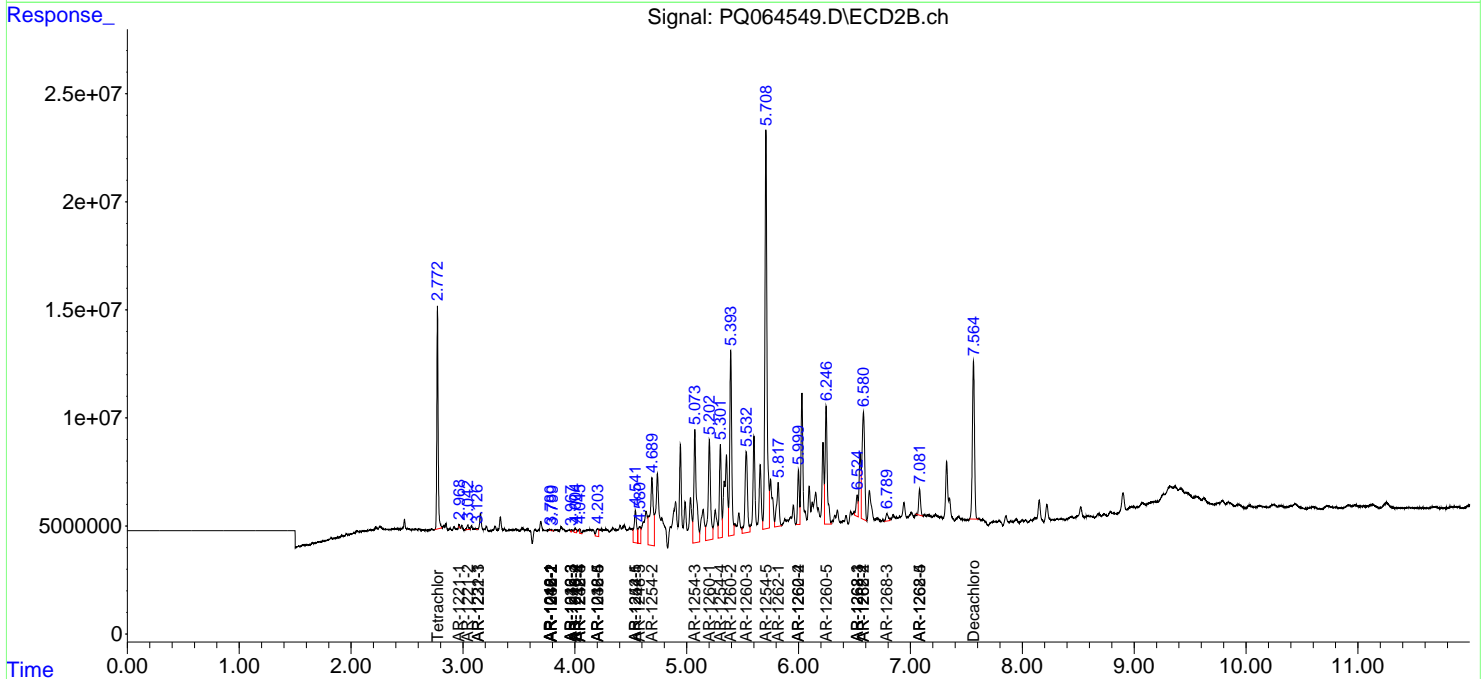
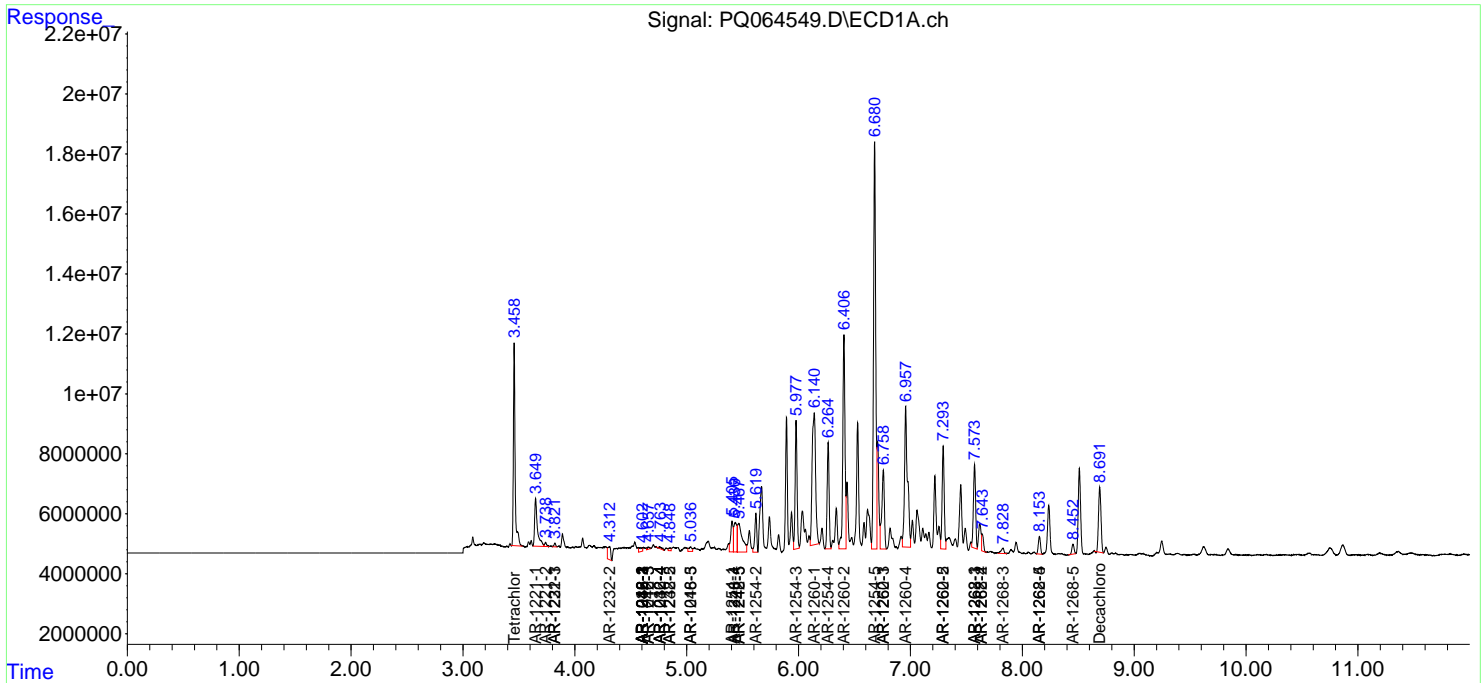
(f)=RT Delta > 1/2 Window (#)=Amounts differ by > 25% (m)=manual int.

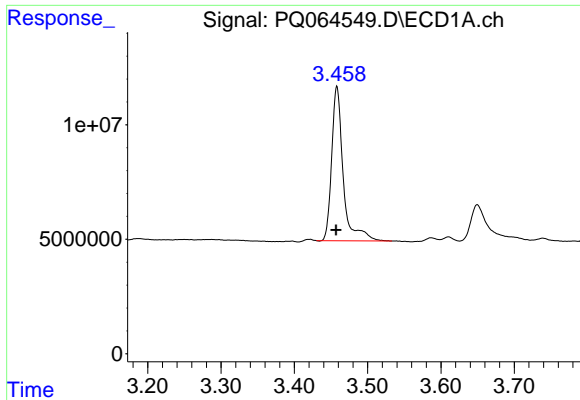
Data Path : Z:\pestpcbsrv\HPCHEM1\ECD\_Q\Data\PQ121523\  
 Data File : PQ064549.D  
 Signal(s) : Signal #1: ECD1A.ch Signal #2: ECD2B.ch  
 Acq On : 15 Dec 2023 11:23  
 Operator : YP\AJ  
 Sample : 05557-12  
 Misc :  
 ALS Vial : 7 Sample Multiplier: 1

Instrument :  
 ECD\_Q  
 ClientSampleId :

Integration File signal 1: autoint1.e  
 Integration File signal 2: autoint2.e  
 Quant Time: Dec 15 13:36:00 2023  
 Quant Method : Z:\pestpcbsrv\HPCHEM1\ECD\_Q\Method\PQ120823.M  
 Quant Title : GC EXTRACTABLES  
 QLast Update : Sat Dec 09 05:18:21 2023  
 Response via : Initial Calibration  
 Integrator: ChemStation

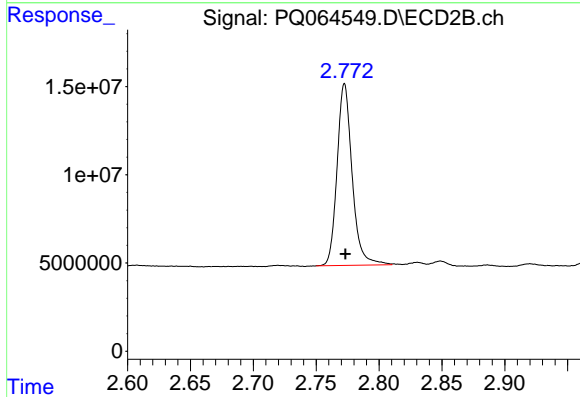
Volume Inj. : 2 µl  
 Signal #1 Phase : ZB-MR1 Signal #2 Phase: ZB-MR2  
 Signal #1 Info : 30Mx0.32mmx 0.50µ Signal #2 Info : 30M x 0.32mm x 0.25µm



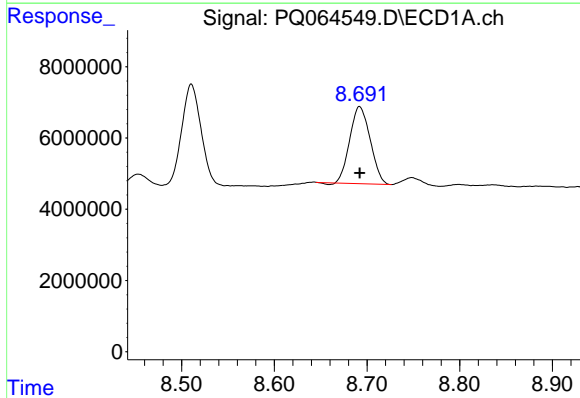


#1 Tetrachloro-m-xylene  
 R.T.: 3.458 min  
 Delta R.T.: 0.001 min  
 Response: 73735897  
 Conc: 17.77 ng/ml

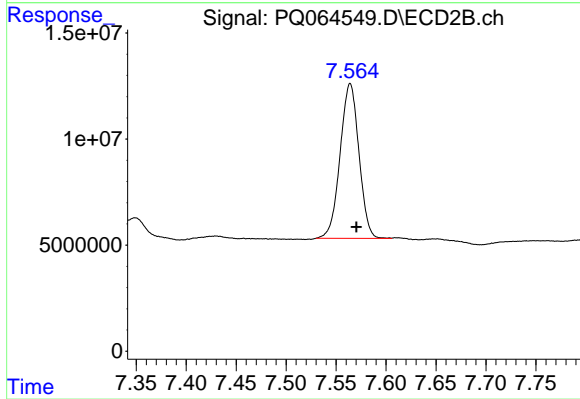
Instrument :  
 ECD\_Q  
 ClientSampleId :



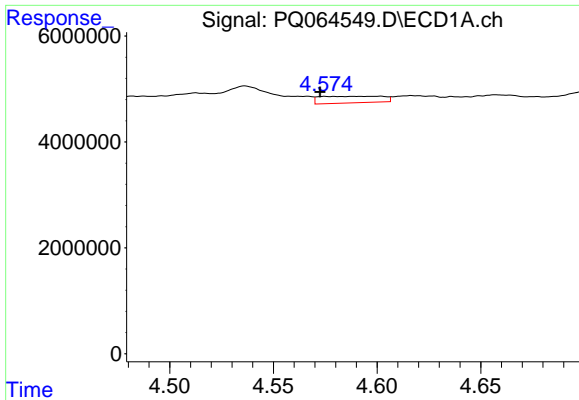
#1 Tetrachloro-m-xylene  
 R.T.: 2.773 min  
 Delta R.T.: 0.000 min  
 Response: 85991665  
 Conc: 20.48 ng/ml



#2 Decachlorobiphenyl  
 R.T.: 8.692 min  
 Delta R.T.: 0.000 min  
 Response: 33094397  
 Conc: 11.29 ng/ml



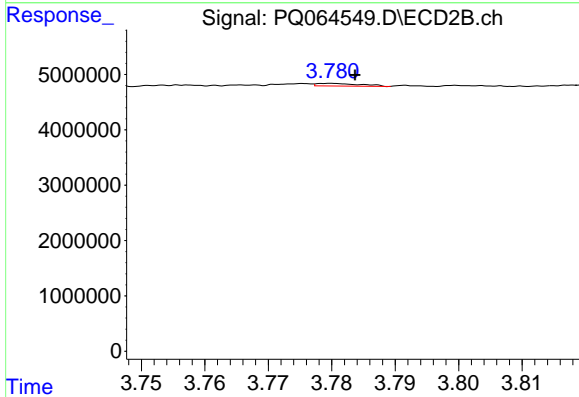
#2 Decachlorobiphenyl  
 R.T.: 7.564 min  
 Delta R.T.: -0.006 min  
 Response: 95757937  
 Conc: 23.72 ng/ml



#3 AR-1016-1

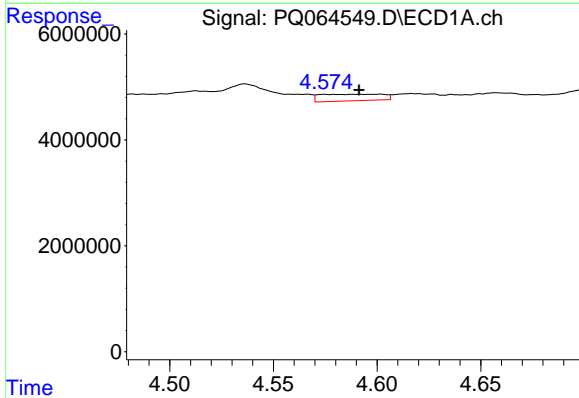
R.T.: 4.601 min  
 Delta R.T.: 0.029 min  
 Response: 2625462  
 Conc: 20.61 ng/ml

Instrument :  
 ECD\_Q  
 ClientSampleId :



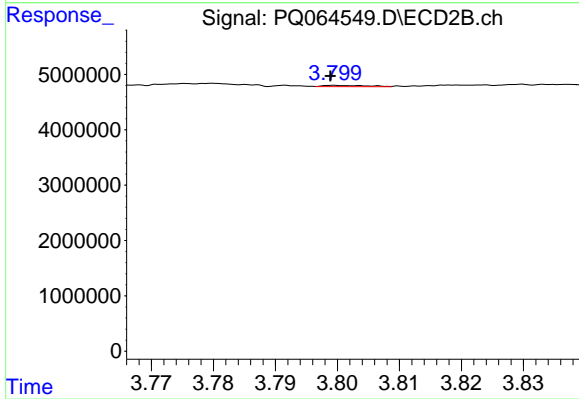
#3 AR-1016-1

R.T.: 3.780 min  
 Delta R.T.: -0.004 min  
 Response: 235151  
 Conc: 1.93 ng/ml



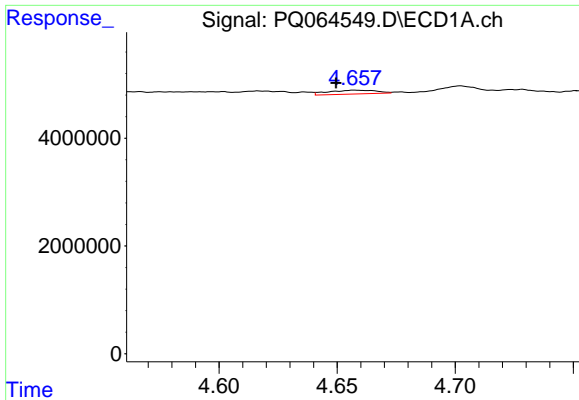
#4 AR-1016-2

R.T.: 4.601 min  
 Delta R.T.: 0.010 min  
 Response: 2625462  
 Conc: 13.68 ng/ml



#4 AR-1016-2

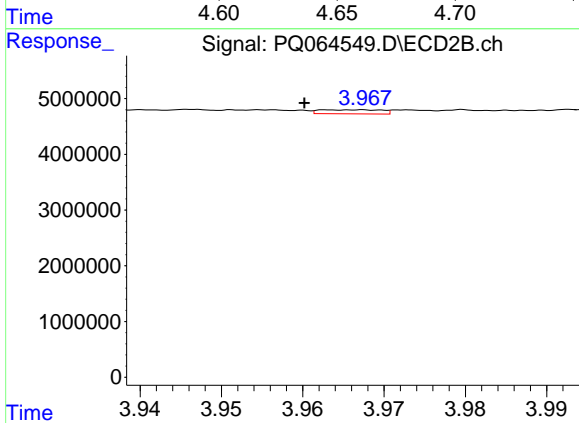
R.T.: 3.800 min  
 Delta R.T.: 0.000 min  
 Response: 117362  
 Conc: 0.64 ng/ml



#5 AR-1016-3

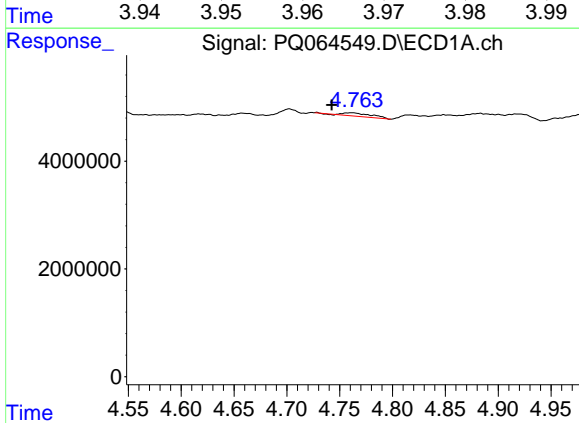
R.T.: 4.658 min  
 Delta R.T.: 0.008 min  
 Response: 1017496  
 Conc: 8.58 ng/ml

Instrument :  
 ECD\_Q  
 ClientSampleId :



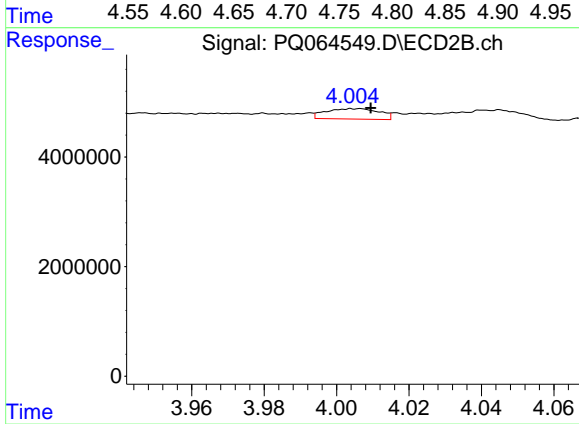
#5 AR-1016-3

R.T.: 3.963 min  
 Delta R.T.: 0.003 min  
 Response: 380776  
 Conc: 3.91 ng/ml



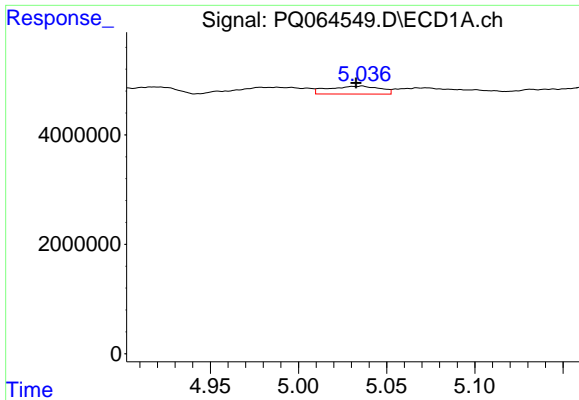
#6 AR-1016-4

R.T.: 4.762 min  
 Delta R.T.: 0.019 min  
 Response: 1171243  
 Conc: 12.61 ng/ml



#6 AR-1016-4

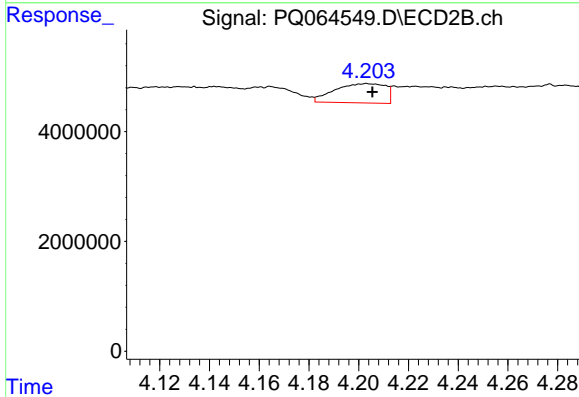
R.T.: 4.007 min  
 Delta R.T.: -0.003 min  
 Response: 1943475  
 Conc: 23.27 ng/ml



#7 AR-1016-5

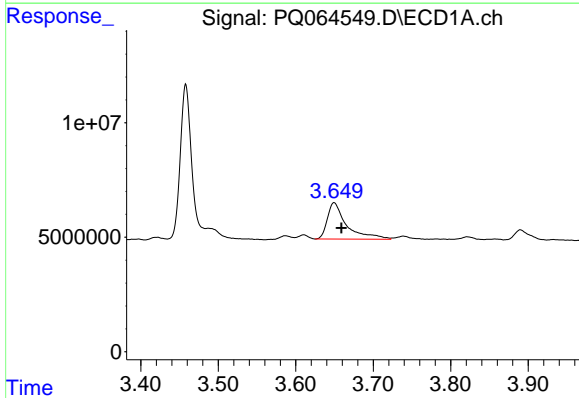
R.T.: 5.036 min  
 Delta R.T.: 0.003 min  
 Response: 2952283  
 Conc: 30.30 ng/ml

Instrument :  
 ECD\_Q  
 ClientSampleId :



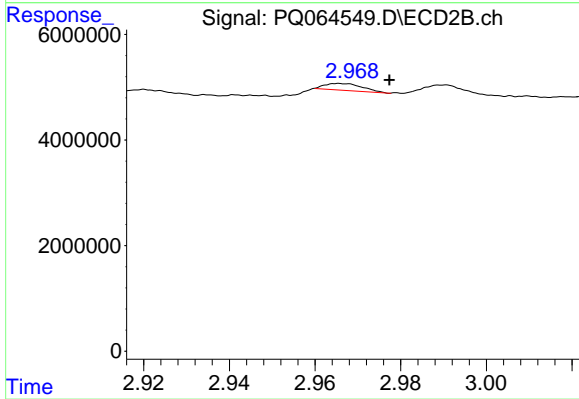
#7 AR-1016-5

R.T.: 4.203 min  
 Delta R.T.: -0.002 min  
 Response: 4966417  
 Conc: 49.06 ng/ml



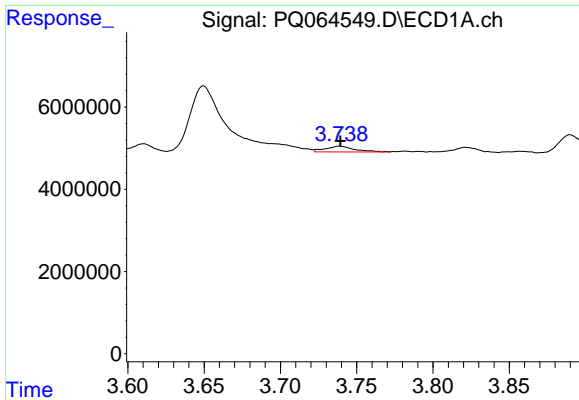
#8 AR-1221-1

R.T.: 3.650 min  
 Delta R.T.: -0.009 min  
 Response: 27598310  
 Conc: 543.56 ng/ml



#8 AR-1221-1

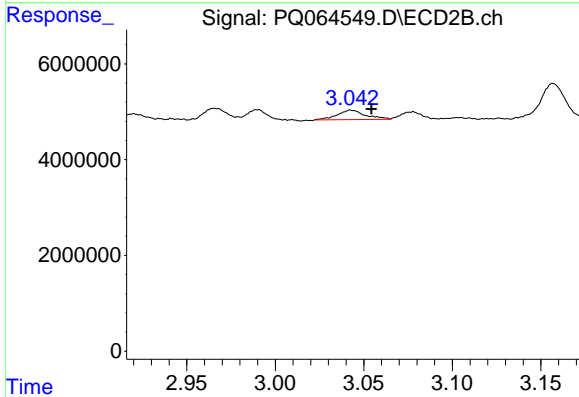
R.T.: 2.966 min  
 Delta R.T.: -0.012 min  
 Response: 799374  
 Conc: 14.12 ng/ml



#9 AR-1221-2

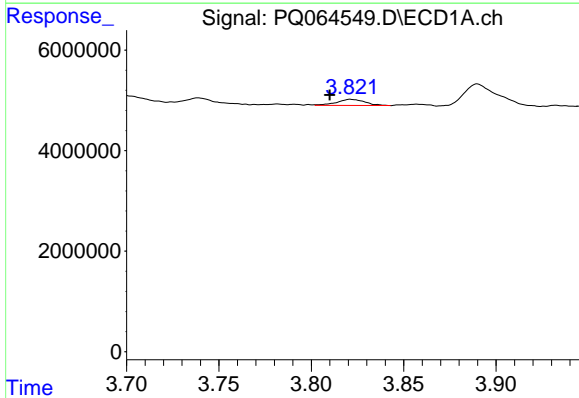
R.T.: 3.739 min  
 Delta R.T.: 0.000 min  
 Response: 1868337  
 Conc: 50.99 ng/ml

Instrument :  
 ECD\_Q  
 ClientSampleId :



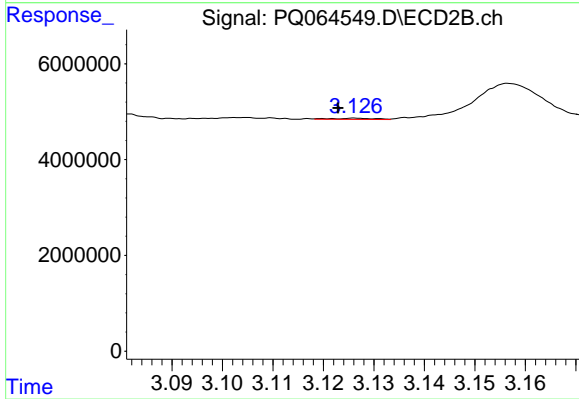
#9 AR-1221-2

R.T.: 3.042 min  
 Delta R.T.: -0.012 min  
 Response: 2180901  
 Conc: 51.77 ng/ml



#10 AR-1221-3

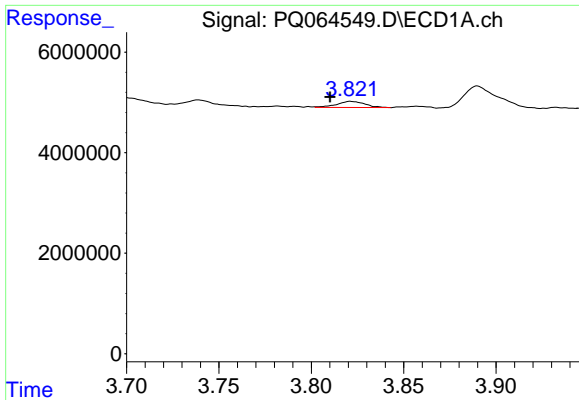
R.T.: 3.822 min  
 Delta R.T.: 0.012 min  
 Response: 1306291  
 Conc: 11.55 ng/ml



#10 AR-1221-3

R.T.: 3.126 min  
 Delta R.T.: 0.003 min  
 Response: 145997  
 Conc: 1.15 ng/ml

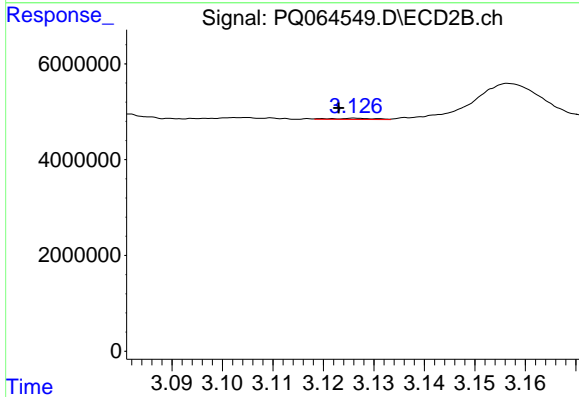




#11 AR-1232-1

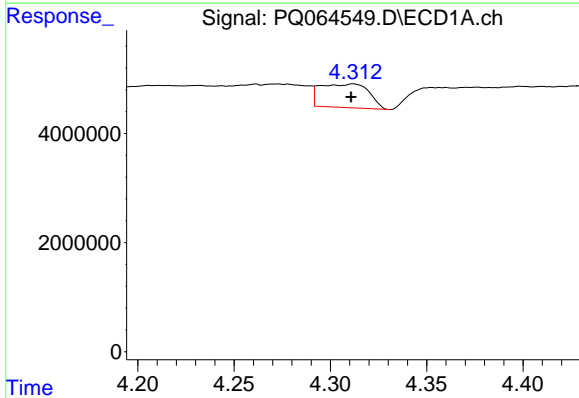
R.T.: 3.822 min  
 Delta R.T.: 0.011 min  
 Response: 1306291  
 Conc: 15.14 ng/ml

Instrument :  
 ECD\_Q  
 ClientSampleId :



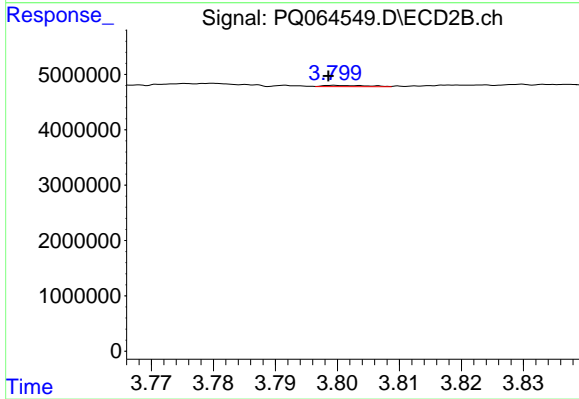
#11 AR-1232-1

R.T.: 3.126 min  
 Delta R.T.: 0.003 min  
 Response: 145997  
 Conc: 1.52 ng/ml



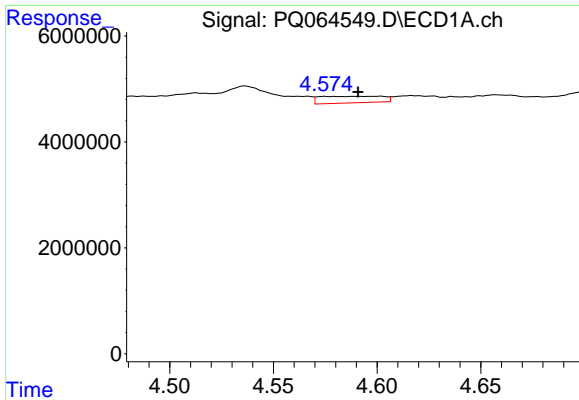
#12 AR-1232-2

R.T.: 4.312 min  
 Delta R.T.: 0.001 min  
 Response: 7573348  
 Conc: 155.25 ng/ml



#12 AR-1232-2

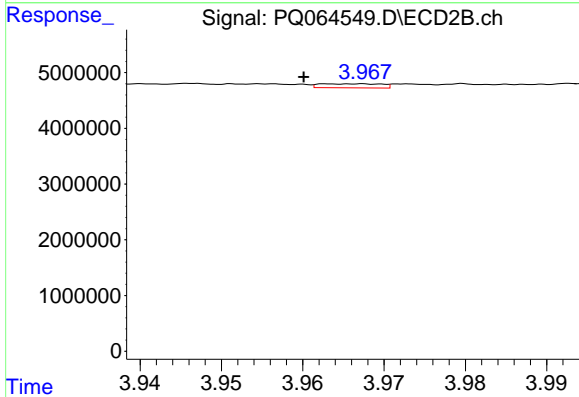
R.T.: 3.800 min  
 Delta R.T.: 0.001 min  
 Response: 117362  
 Conc: 1.40 ng/ml



#13 AR-1232-3

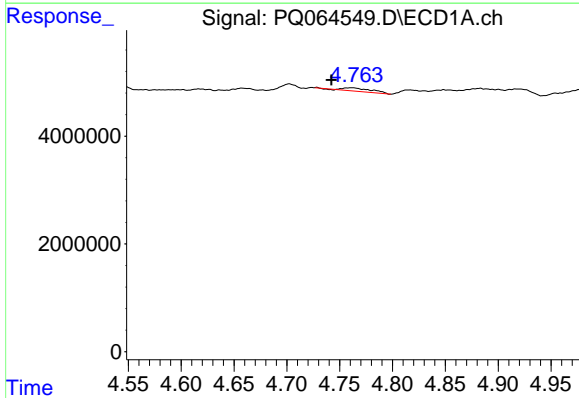
R.T.: 4.601 min  
 Delta R.T.: 0.011 min  
 Response: 2625462  
 Conc: 30.76 ng/ml

Instrument :  
 ECD\_Q  
 ClientSampleId :



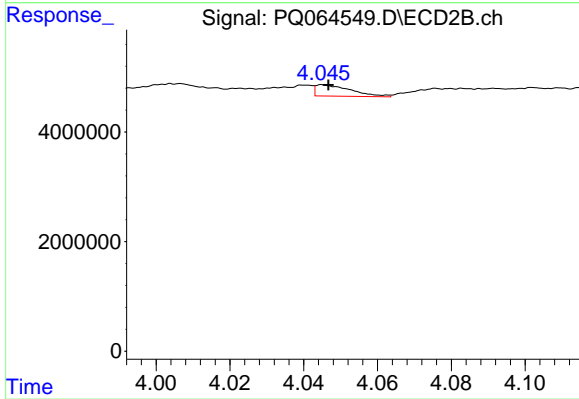
#13 AR-1232-3

R.T.: 3.963 min  
 Delta R.T.: 0.003 min  
 Response: 380776  
 Conc: 8.55 ng/ml



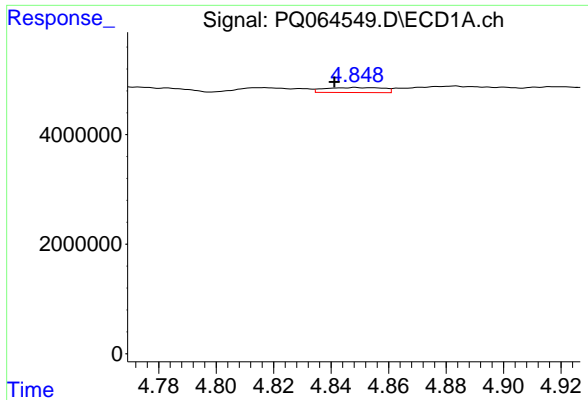
#14 AR-1232-4

R.T.: 4.762 min  
 Delta R.T.: 0.019 min  
 Response: 1171243  
 Conc: 28.43 ng/ml



#14 AR-1232-4

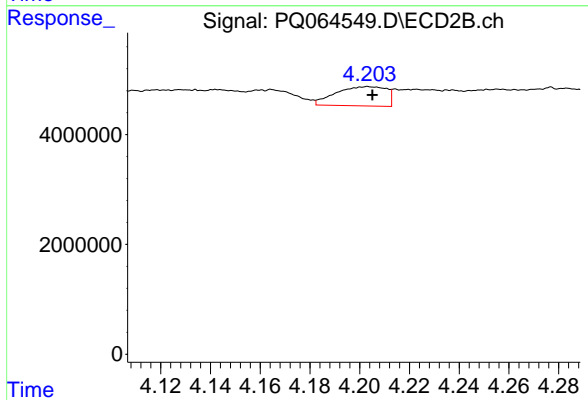
R.T.: 4.045 min  
 Delta R.T.: -0.002 min  
 Response: 1381622  
 Conc: 36.17 ng/ml



#15 AR-1232-5

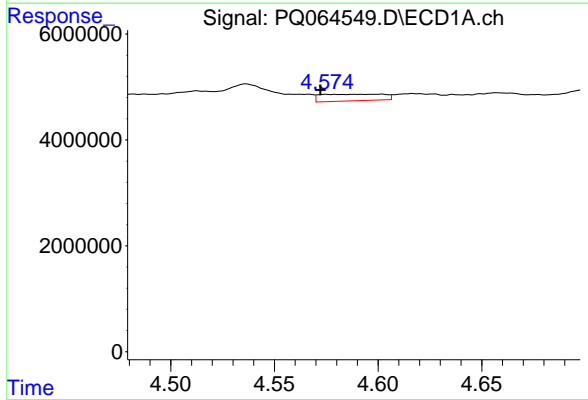
R.T.: 4.849 min  
 Delta R.T.: 0.007 min  
 Response: 1296490  
 Conc: 42.40 ng/ml

Instrument :  
 ECD\_Q  
 ClientSampleId :



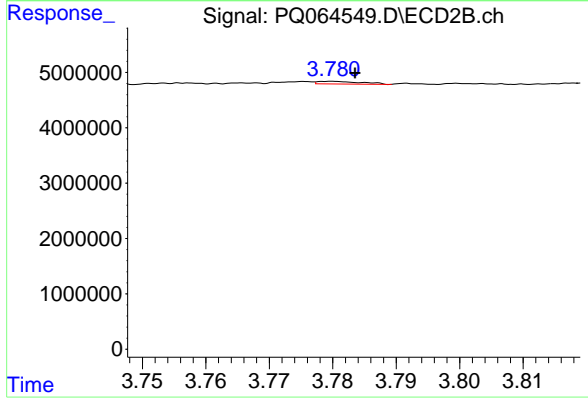
#15 AR-1232-5

R.T.: 4.203 min  
 Delta R.T.: -0.002 min  
 Response: 4966417  
 Conc: 116.70 ng/ml



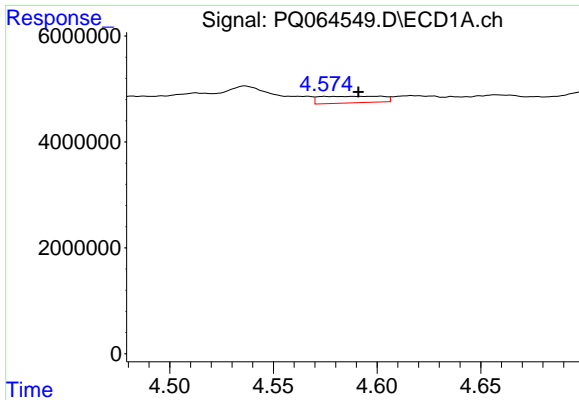
#16 AR-1242-1

R.T.: 4.601 min  
 Delta R.T.: 0.029 min  
 Response: 2625462  
 Conc: 25.33 ng/ml



#16 AR-1242-1

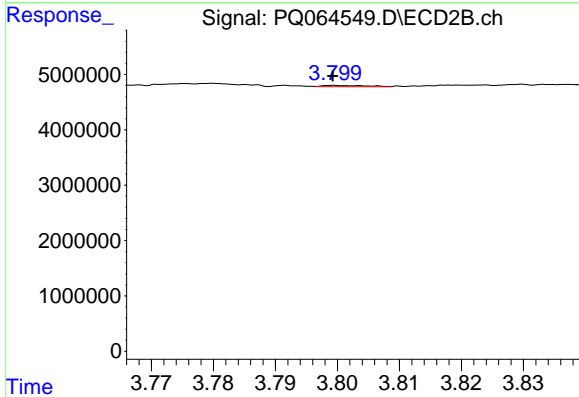
R.T.: 3.780 min  
 Delta R.T.: -0.004 min  
 Response: 235151  
 Conc: 2.27 ng/ml



#17 AR-1242-2

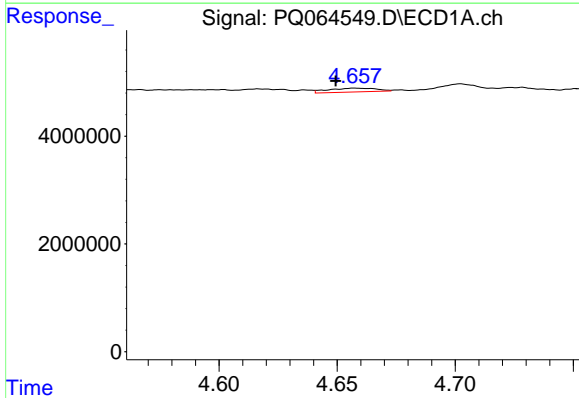
R.T.: 4.601 min  
 Delta R.T.: 0.010 min  
 Response: 2625462  
 Conc: 16.92 ng/ml

Instrument :  
 ECD\_Q  
 ClientSampleId :



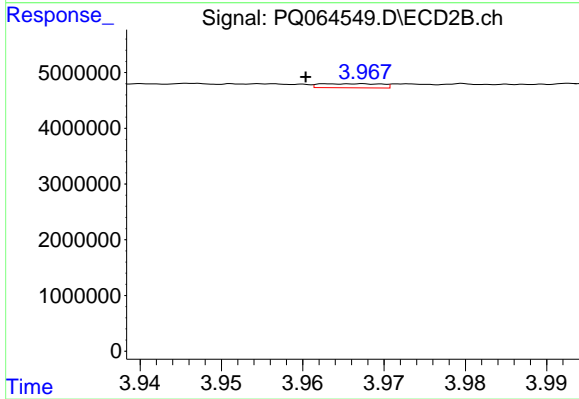
#17 AR-1242-2

R.T.: 3.800 min  
 Delta R.T.: 0.000 min  
 Response: 117362  
 Conc: 0.76 ng/ml



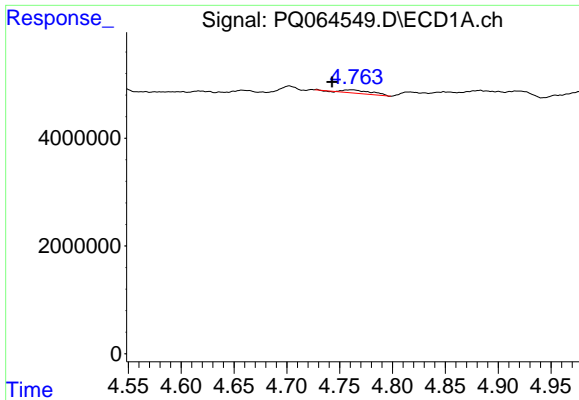
#18 AR-1242-3

R.T.: 4.658 min  
 Delta R.T.: 0.008 min  
 Response: 1017496  
 Conc: 10.50 ng/ml



#18 AR-1242-3

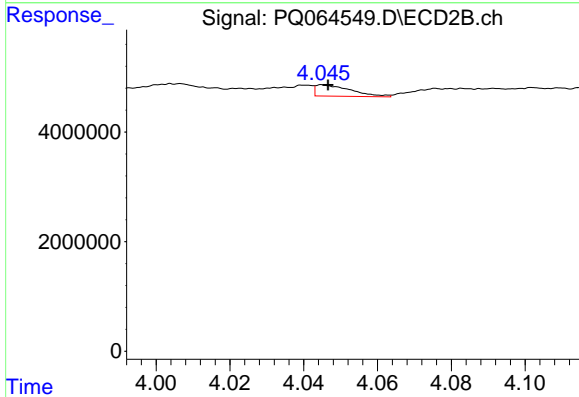
R.T.: 3.963 min  
 Delta R.T.: 0.003 min  
 Response: 380776  
 Conc: 4.64 ng/ml



#19 AR-1242-4

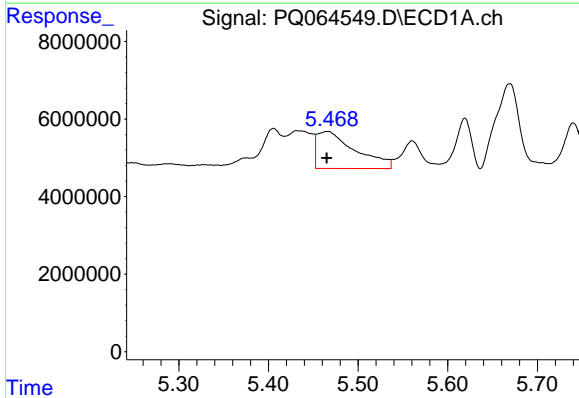
R.T.: 4.762 min  
 Delta R.T.: 0.019 min  
 Response: 1171243  
 Conc: 15.41 ng/ml

Instrument :  
 ECD\_Q  
 ClientSampleId :



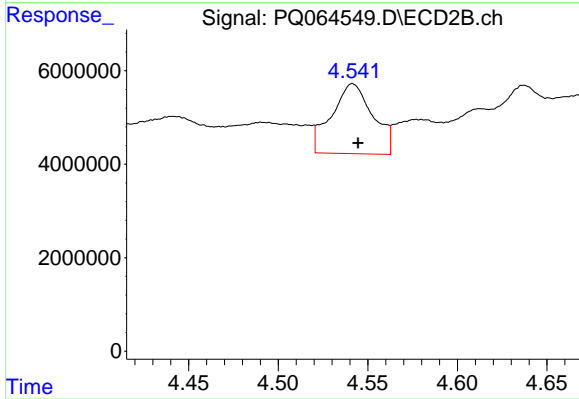
#19 AR-1242-4

R.T.: 4.045 min  
 Delta R.T.: -0.002 min  
 Response: 1381622  
 Conc: 17.71 ng/ml



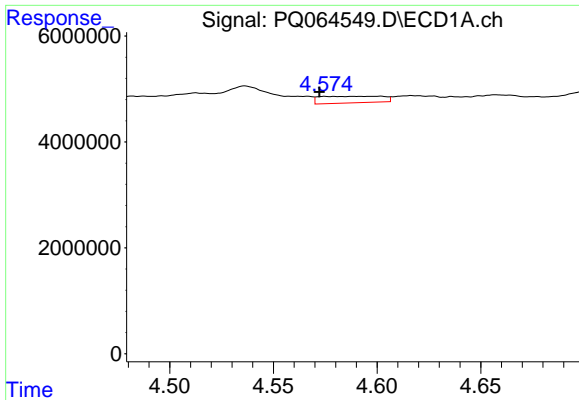
#20 AR-1242-5

R.T.: 5.466 min  
 Delta R.T.: 0.001 min  
 Response: 28270748  
 Conc: 340.55 ng/ml



#20 AR-1242-5

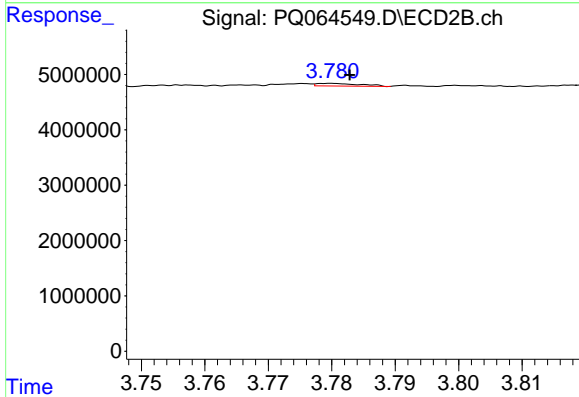
R.T.: 4.542 min  
 Delta R.T.: -0.003 min  
 Response: 24133458  
 Conc: 250.26 ng/ml



#21 AR-1248-1

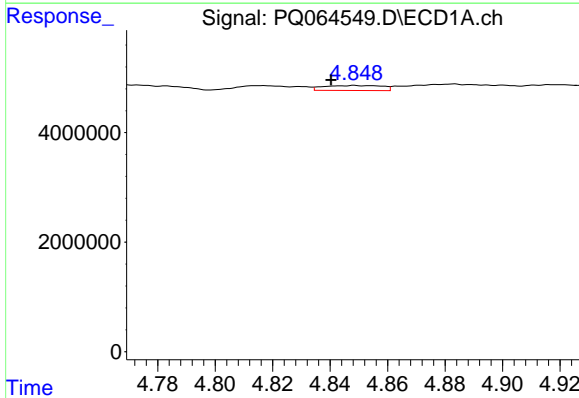
R.T.: 4.601 min  
 Delta R.T.: 0.029 min  
 Response: 2625462  
 Conc: 33.71 ng/ml

Instrument :  
 ECD\_Q  
 ClientSampleId :



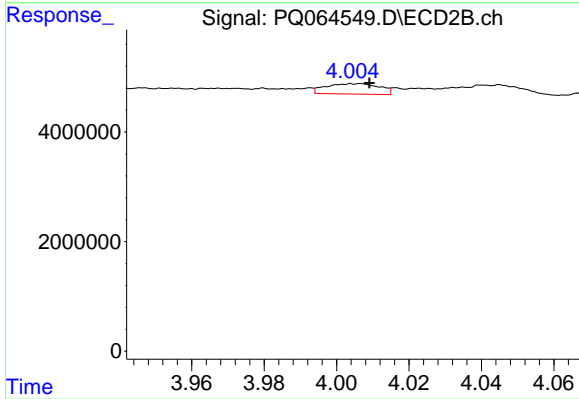
#21 AR-1248-1

R.T.: 3.780 min  
 Delta R.T.: -0.003 min  
 Response: 235151  
 Conc: 2.91 ng/ml



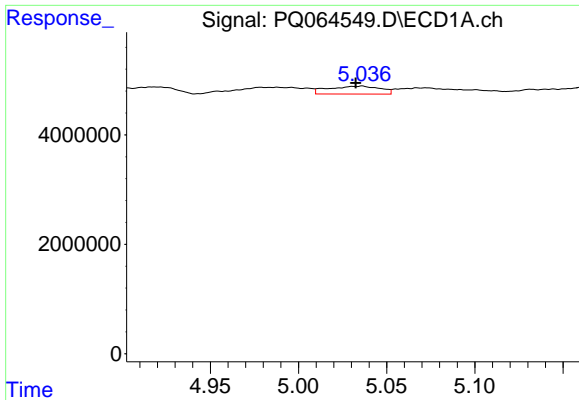
#22 AR-1248-2

R.T.: 4.849 min  
 Delta R.T.: 0.008 min  
 Response: 1296490  
 Conc: 11.62 ng/ml



#22 AR-1248-2

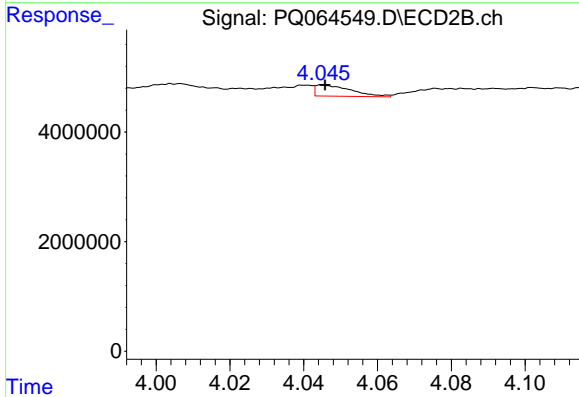
R.T.: 4.007 min  
 Delta R.T.: -0.002 min  
 Response: 1943475  
 Conc: 15.85 ng/ml



#23 AR-1248-3

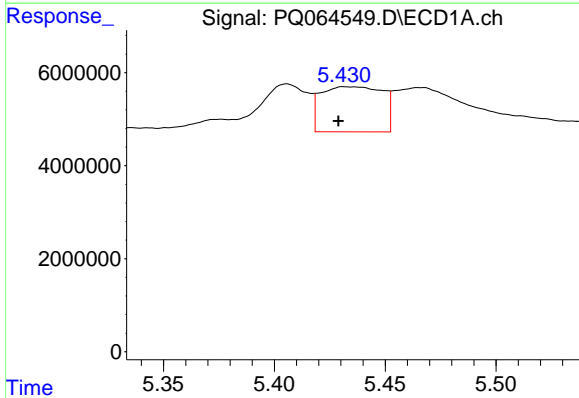
R.T.: 5.036 min  
 Delta R.T.: 0.004 min  
 Response: 2952283  
 Conc: 22.18 ng/ml

Instrument :  
 ECD\_Q  
 ClientSampleId :



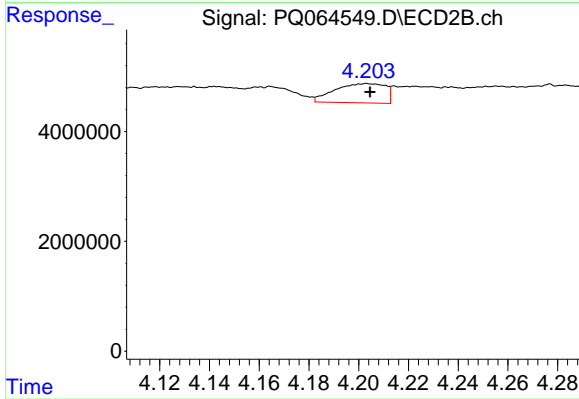
#23 AR-1248-3

R.T.: 4.045 min  
 Delta R.T.: 0.000 min  
 Response: 1381622  
 Conc: 11.84 ng/ml



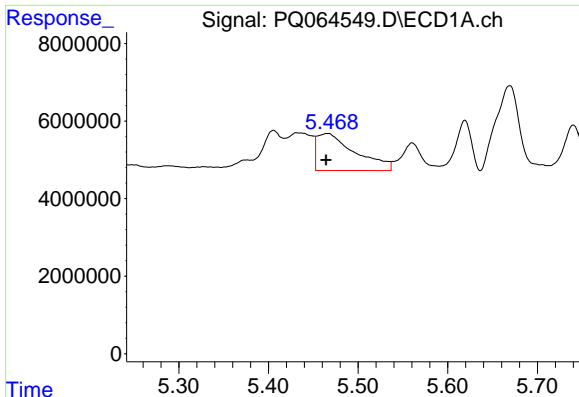
#24 AR-1248-4

R.T.: 5.432 min  
 Delta R.T.: 0.003 min  
 Response: 18749447  
 Conc: 131.00 ng/ml



#24 AR-1248-4

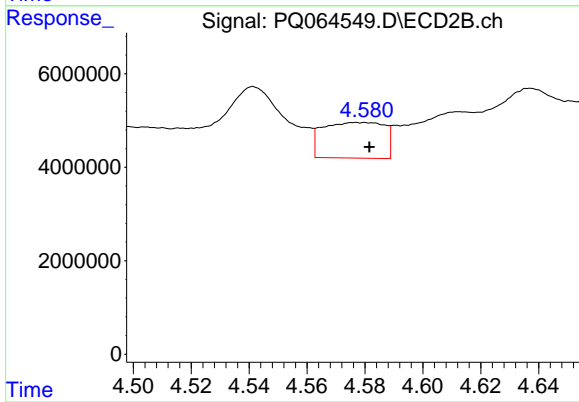
R.T.: 4.203 min  
 Delta R.T.: -0.001 min  
 Response: 4966417  
 Conc: 35.43 ng/ml



#25 AR-1248-5

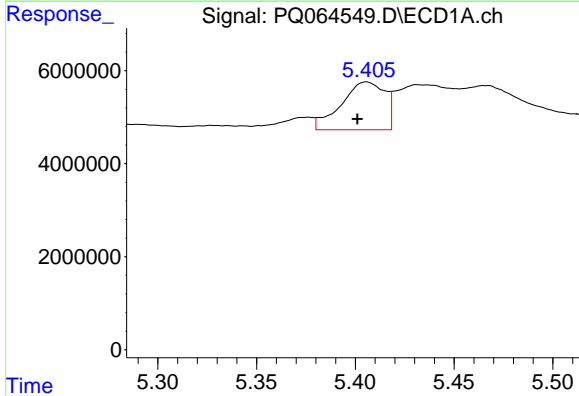
R.T.: 5.466 min  
 Delta R.T.: 0.002 min  
 Response: 28270748  
 Conc: 201.62 ng/ml

Instrument :  
 ECD\_Q  
 ClientSampleId :



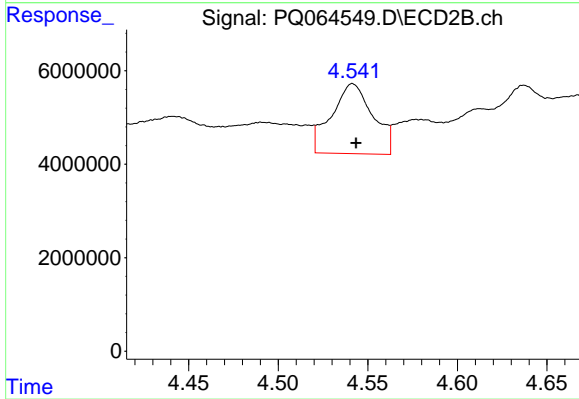
#25 AR-1248-5

R.T.: 4.580 min  
 Delta R.T.: -0.001 min  
 Response: 11298483  
 Conc: 84.91 ng/ml



#26 AR-1254-1

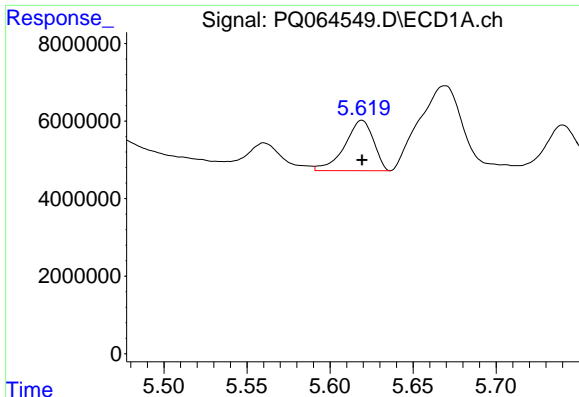
R.T.: 5.406 min  
 Delta R.T.: 0.005 min  
 Response: 15898951  
 Conc: 103.80 ng/ml



#26 AR-1254-1

R.T.: 4.542 min  
 Delta R.T.: -0.002 min  
 Response: 24133458  
 Conc: 115.26 ng/ml

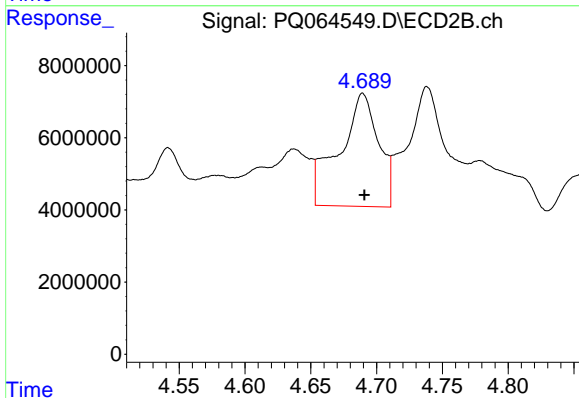




#27 AR-1254-2

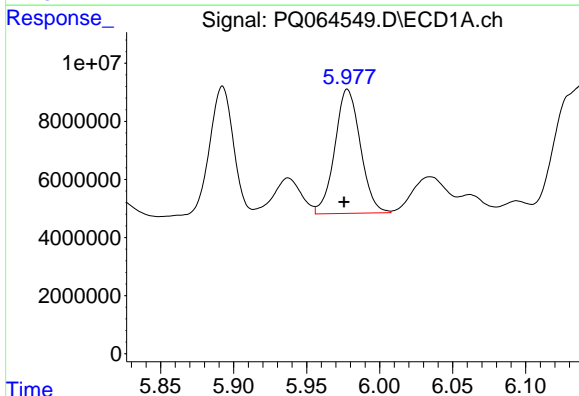
R.T.: 5.619 min  
 Delta R.T.: 0.000 min  
 Response: 15655750  
 Conc: 67.05 ng/ml

Instrument :  
 ECD\_Q  
 ClientSampleId :



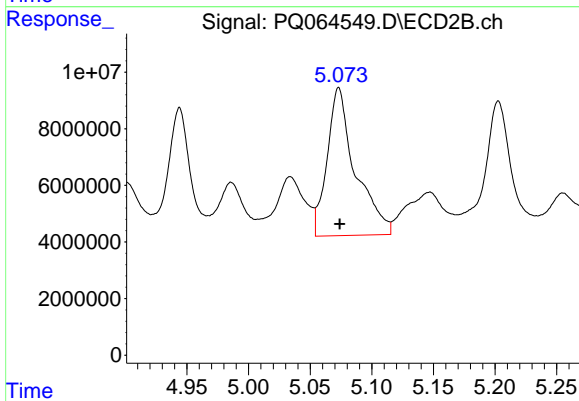
#27 AR-1254-2

R.T.: 4.689 min  
 Delta R.T.: -0.001 min  
 Response: 64874096  
 Conc: 350.71 ng/ml



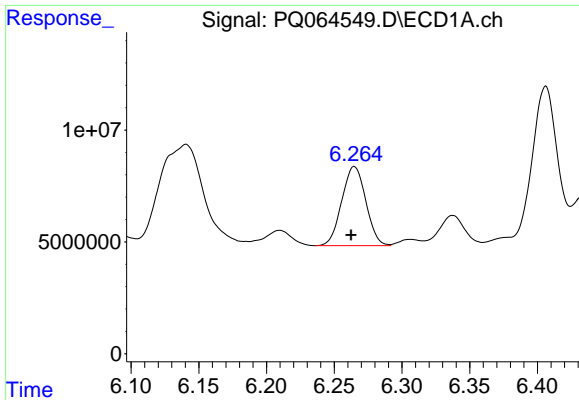
#28 AR-1254-3

R.T.: 5.978 min  
 Delta R.T.: 0.002 min  
 Response: 52168486  
 Conc: 212.24 ng/ml



#28 AR-1254-3

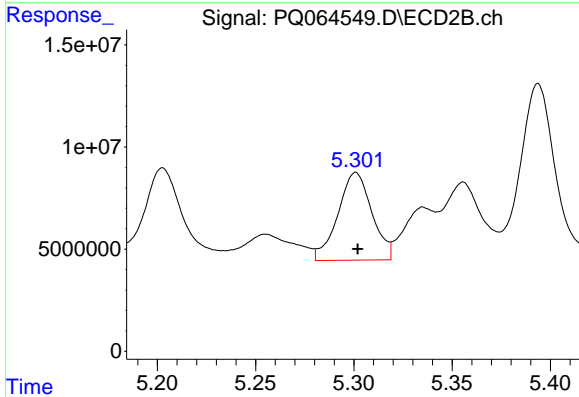
R.T.: 5.073 min  
 Delta R.T.: 0.000 min  
 Response: 83093379  
 Conc: 293.71 ng/ml



#29 AR-1254-4

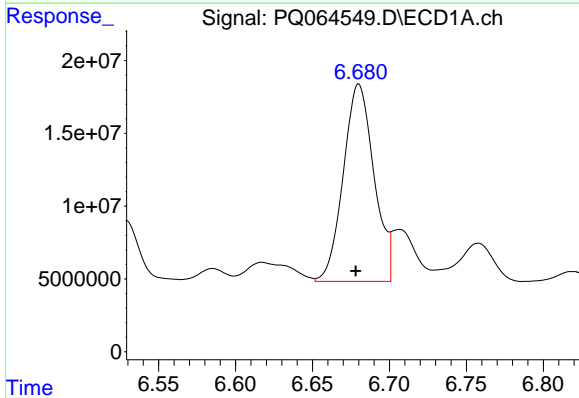
R.T.: 6.265 min  
 Delta R.T.: 0.002 min  
 Response: 43716248  
 Conc: 251.60 ng/ml

Instrument :  
 ECD\_Q  
 ClientSampleId :



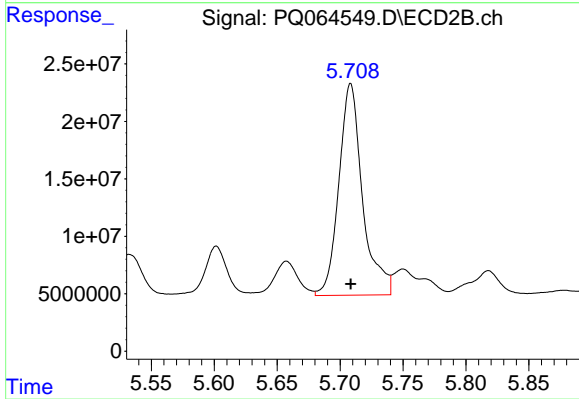
#29 AR-1254-4

R.T.: 5.301 min  
 Delta R.T.: 0.000 min  
 Response: 51846916  
 Conc: 279.28 ng/ml



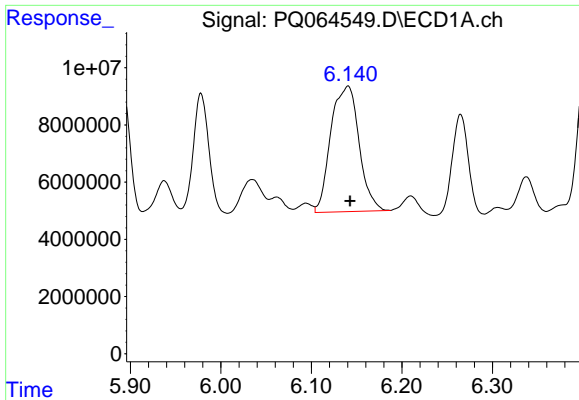
#30 AR-1254-5

R.T.: 6.680 min  
 Delta R.T.: 0.002 min  
 Response: 187741669  
 Conc: 972.74 ng/ml



#30 AR-1254-5

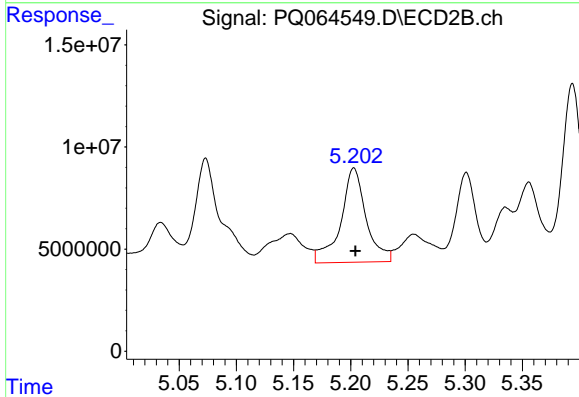
R.T.: 5.708 min  
 Delta R.T.: 0.000 min  
 Response: 241166069  
 Conc: 928.81 ng/ml



#31 AR-1260-1

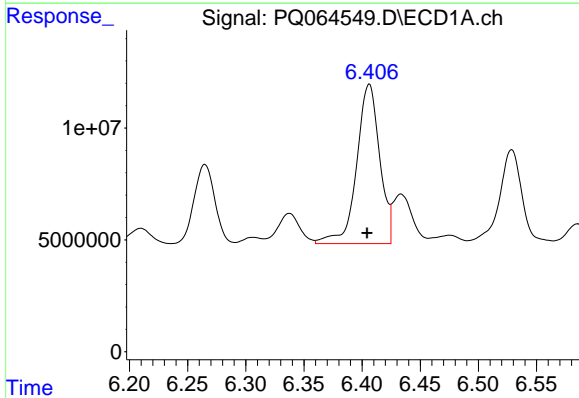
R.T.: 6.141 min  
 Delta R.T.: -0.002 min  
 Response: 95026014  
 Conc: 507.42 ng/ml

Instrument :  
 ECD\_Q  
 ClientSampleId :



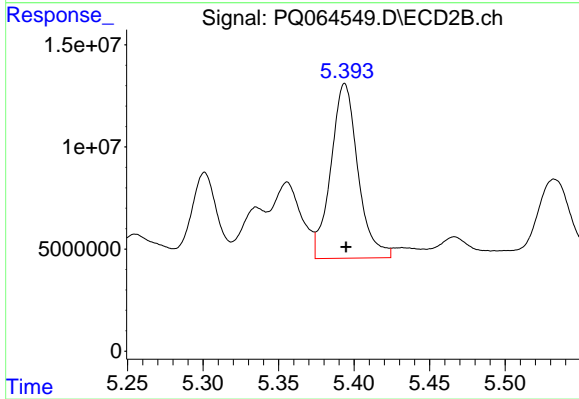
#31 AR-1260-1

R.T.: 5.203 min  
 Delta R.T.: -0.001 min  
 Response: 71526416  
 Conc: 369.85 ng/ml



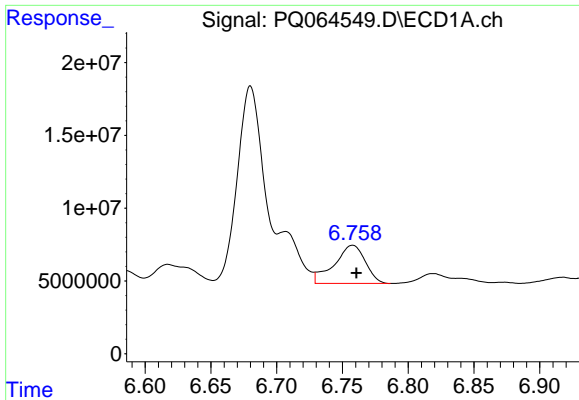
#32 AR-1260-2

R.T.: 6.406 min  
 Delta R.T.: 0.002 min  
 Response: 98304718  
 Conc: 453.44 ng/ml



#32 AR-1260-2

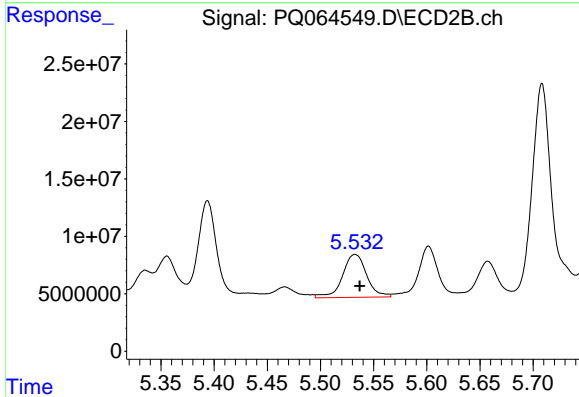
R.T.: 5.394 min  
 Delta R.T.: 0.000 min  
 Response: 106766273  
 Conc: 458.76 ng/ml



#33 AR-1260-3

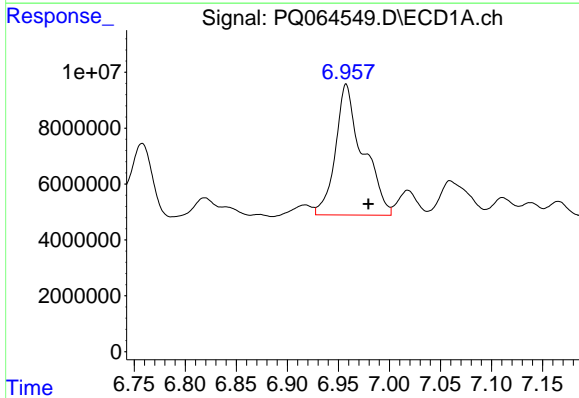
R.T.: 6.758 min  
 Delta R.T.: -0.003 min  
 Response: 43231350  
 Conc: 265.24 ng/ml

Instrument :  
 ECD\_Q  
 ClientSampleId :



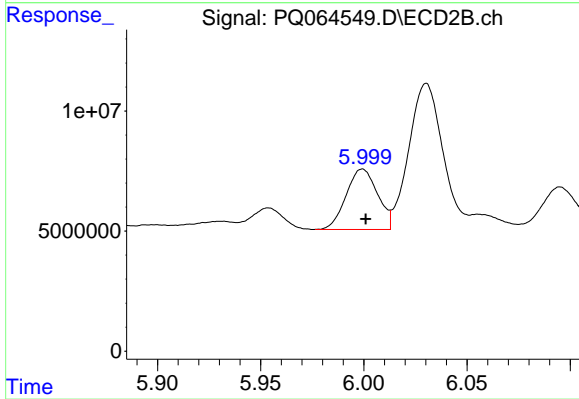
#33 AR-1260-3

R.T.: 5.532 min  
 Delta R.T.: -0.004 min  
 Response: 58960951  
 Conc: 271.25 ng/ml



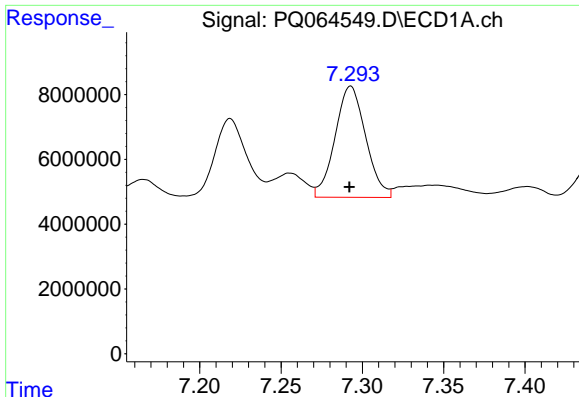
#34 AR-1260-4

R.T.: 6.958 min  
 Delta R.T.: -0.022 min  
 Response: 87086668  
 Conc: 507.65 ng/ml



#34 AR-1260-4

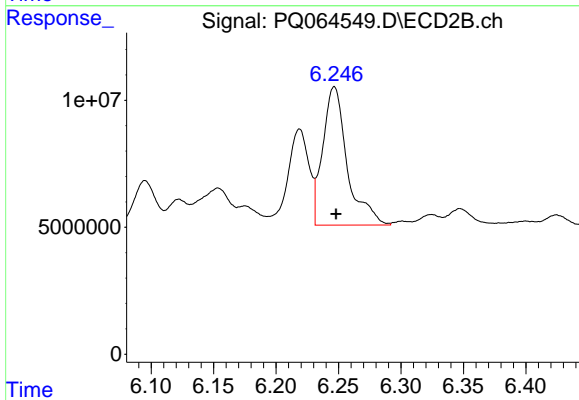
R.T.: 5.999 min  
 Delta R.T.: -0.002 min  
 Response: 26610468  
 Conc: 144.47 ng/ml



#35 AR-1260-5

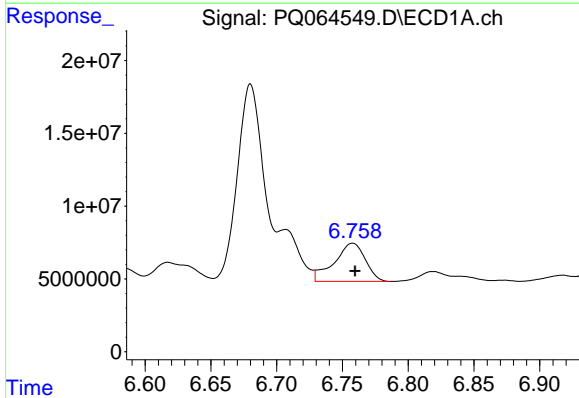
R.T.: 7.293 min  
 Delta R.T.: 0.000 min  
 Response: 45033063  
 Conc: 133.29 ng/ml

Instrument :  
 ECD\_Q  
 ClientSampleId :



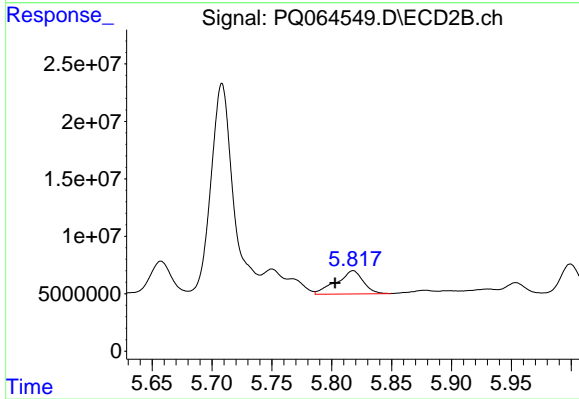
#35 AR-1260-5

R.T.: 6.247 min  
 Delta R.T.: -0.001 min  
 Response: 74478635  
 Conc: 171.76 ng/ml



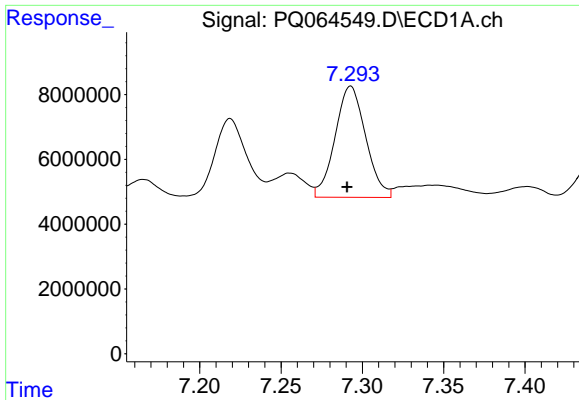
#36 AR-1262-1

R.T.: 6.758 min  
 Delta R.T.: -0.002 min  
 Response: 43231350  
 Conc: 175.73 ng/ml



#36 AR-1262-1

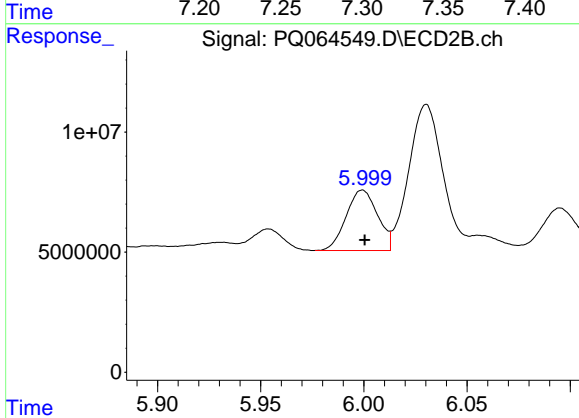
R.T.: 5.818 min  
 Delta R.T.: 0.015 min  
 Response: 31624311  
 Conc: 277.64 ng/ml



#37 AR-1262-2

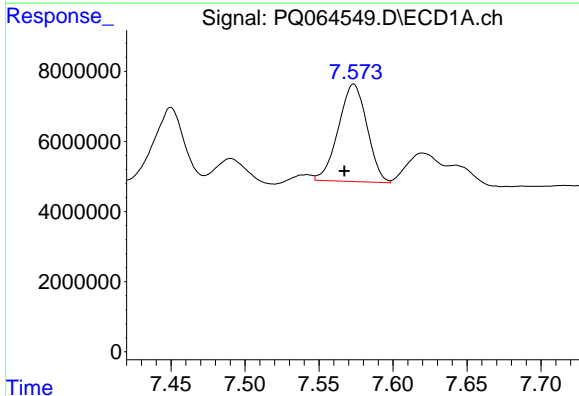
R.T.: 7.293 min  
Delta R.T.: 0.002 min  
Response: 45033063  
Conc: 112.33 ng/ml

Instrument :  
ECD\_Q  
ClientSampleId :



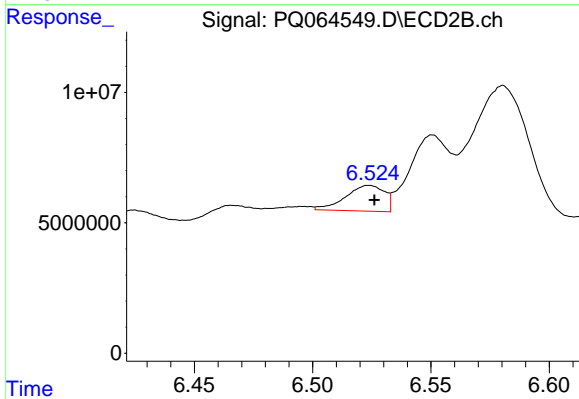
#37 AR-1262-2

R.T.: 5.999 min  
Delta R.T.: -0.001 min  
Response: 26610468  
Conc: 104.46 ng/ml



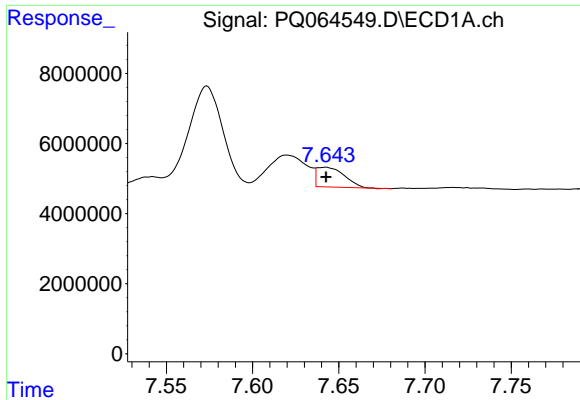
#38 AR-1262-3

R.T.: 7.573 min  
Delta R.T.: 0.006 min  
Response: 37382601  
Conc: 138.21 ng/ml



#38 AR-1262-3

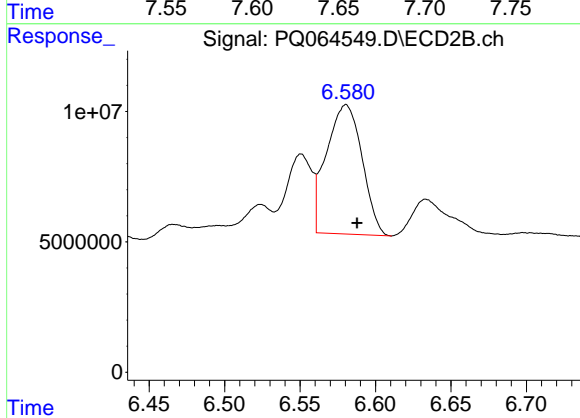
R.T.: 6.524 min  
Delta R.T.: -0.002 min  
Response: 11249758  
Conc: 49.96 ng/ml



#39 AR-1262-4

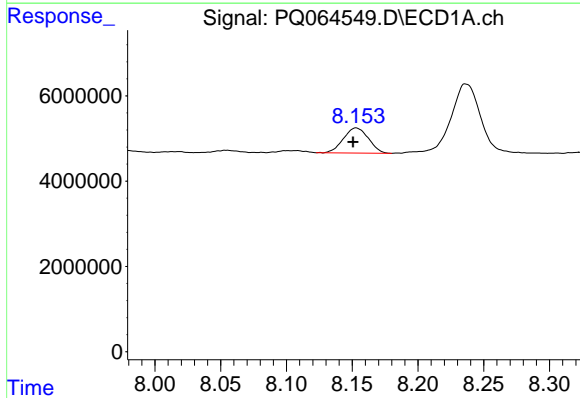
R.T.: 7.642 min  
 Delta R.T.: 0.000 min  
 Response: 6212940  
 Conc: 29.44 ng/ml

Instrument :  
 ECD\_Q  
 ClientSampleId :



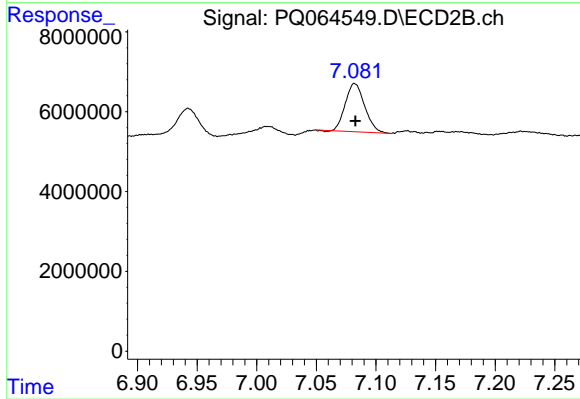
#39 AR-1262-4

R.T.: 6.580 min  
 Delta R.T.: -0.007 min  
 Response: 81315661  
 Conc: 187.89 ng/ml



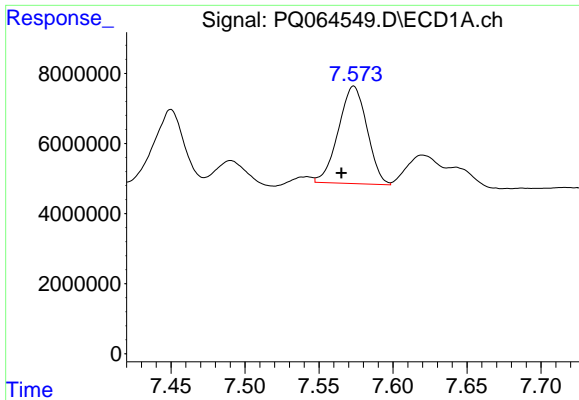
#40 AR-1262-5

R.T.: 8.153 min  
 Delta R.T.: 0.002 min  
 Response: 7794544  
 Conc: 57.19 ng/ml



#40 AR-1262-5

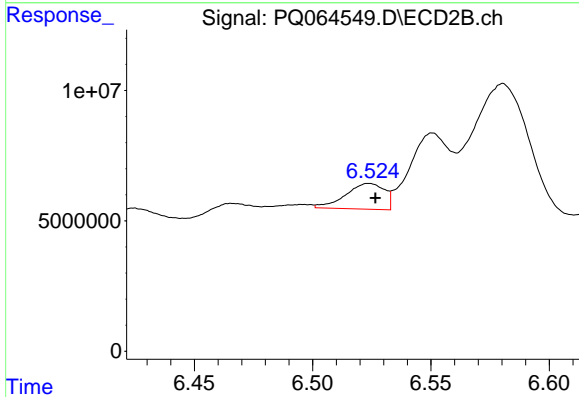
R.T.: 7.082 min  
 Delta R.T.: 0.000 min  
 Response: 13619665  
 Conc: 51.88 ng/ml



#41 AR-1268-1

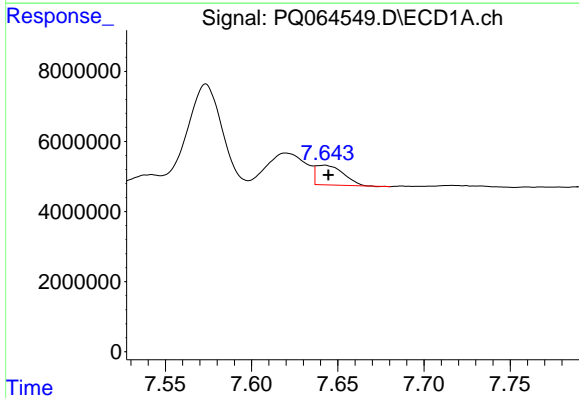
R.T.: 7.573 min  
 Delta R.T.: 0.008 min  
 Response: 37382601  
 Conc: 78.16 ng/ml

Instrument :  
 ECD\_Q  
 ClientSampleId :



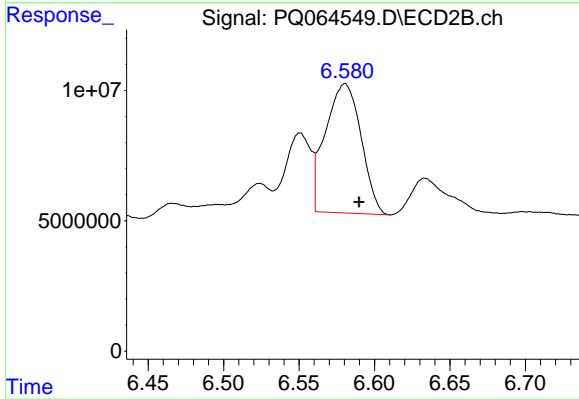
#41 AR-1268-1

R.T.: 6.524 min  
 Delta R.T.: -0.003 min  
 Response: 11249758  
 Conc: 17.09 ng/ml



#42 AR-1268-2

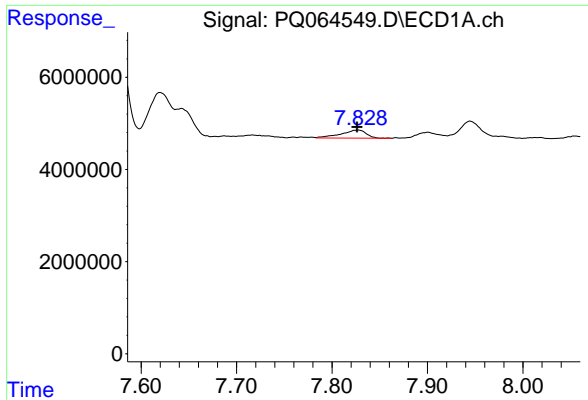
R.T.: 7.642 min  
 Delta R.T.: -0.002 min  
 Response: 6212940  
 Conc: 14.29 ng/ml



#42 AR-1268-2

R.T.: 6.580 min  
 Delta R.T.: -0.009 min  
 Response: 81315661  
 Conc: 130.98 ng/ml

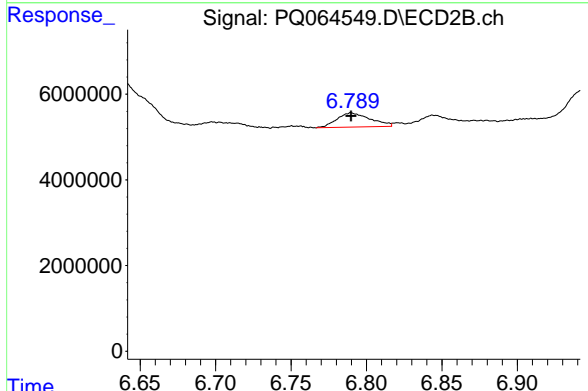




#43 AR-1268-3

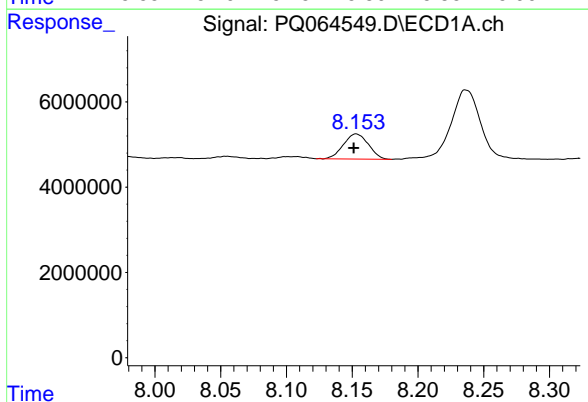
R.T.: 7.827 min  
 Delta R.T.: 0.001 min  
 Response: 3268469  
 Conc: 8.65 ng/ml

Instrument :  
 ECD\_Q  
 ClientSampleId :



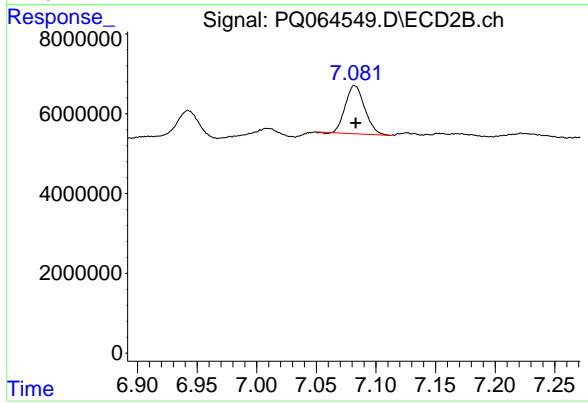
#43 AR-1268-3

R.T.: 6.790 min  
 Delta R.T.: 0.000 min  
 Response: 5113152  
 Conc: 7.99 ng/ml



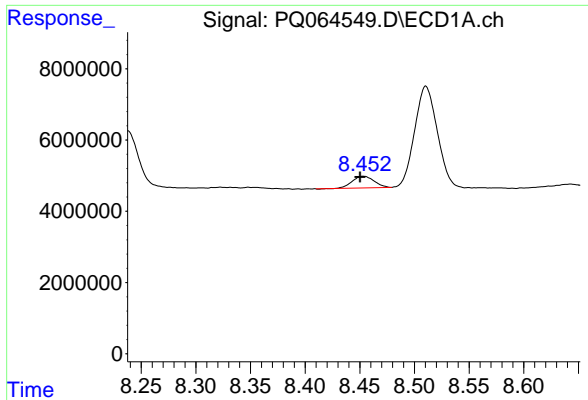
#44 AR-1268-4

R.T.: 8.153 min  
 Delta R.T.: 0.002 min  
 Response: 7794544  
 Conc: 50.92 ng/ml



#44 AR-1268-4

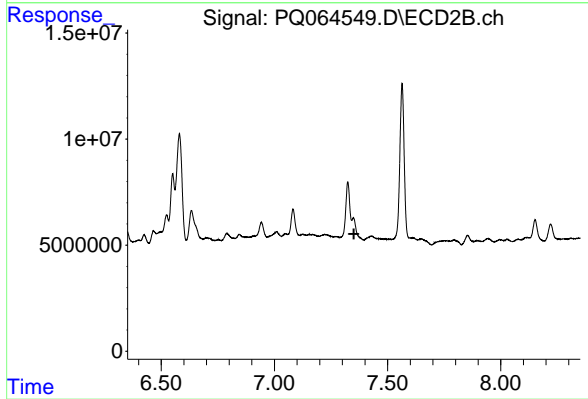
R.T.: 7.082 min  
 Delta R.T.: 0.000 min  
 Response: 13619665  
 Conc: 45.26 ng/ml



#45 AR-1268-5

R.T.: 8.453 min  
Delta R.T.: 0.003 min  
Response: 4542064  
Conc: 4.18 ng/ml

Instrument :  
ECD\_Q  
ClientSampleId :



#45 AR-1268-5

R.T.: 7.349 min  
Delta R.T.: -0.002 min  
Response: -19486454  
Conc: N.D.