

Data Path : Z:\pestpcbsrv\HPCHEM1\ECD\_Q\Data\PQ121718\  
 Data File : PQ035596.D  
 Signal(s) : Signal #1: ECD1A.ch Signal #2: ECD2B.ch  
 Acq On : 17 Dec 2018 13:58  
 Operator : SM\SJ  
 Sample : I.BLK  
 Misc :  
 ALS Vial : 2 Sample Multiplier: 1

Instrument :  
 ECD\_Q  
 ClientSampleId :  
 I.BLK

Integration File signal 1: autoint1.e  
 Integration File signal 2: autoint2.e  
 Quant Time: Dec 18 01:21:20 2018  
 Quant Method : Z:\pestpcbsrv\HPCHEM1\ECD\_Q\Method\PQ121318.M  
 Quant Title : GC EXTRACTABLES  
 QLast Update : Wed Dec 12 22:07:58 2018  
 Response via : Initial Calibration  
 Integrator: ChemStation

Volume Inj. : 2 µl  
 Signal #1 Phase : ZB-MR1 Signal #2 Phase: ZB-MR2  
 Signal #1 Info : 30Mx0.32mmx 0.50µ Signal #2 Info : 30M x 0.32mm x 0.25µm

Compound	RT#1	RT#2	Resp#1	Resp#2	ng/ml	ng/ml
-----						
System Monitoring Compounds						
1) SA Tetrachlo...	4.447	3.743	94408902	56342087	24.129	25.216
2) SA Decachlor...	10.168	8.734	54654234	33436423	18.542	18.918

Target Compounds

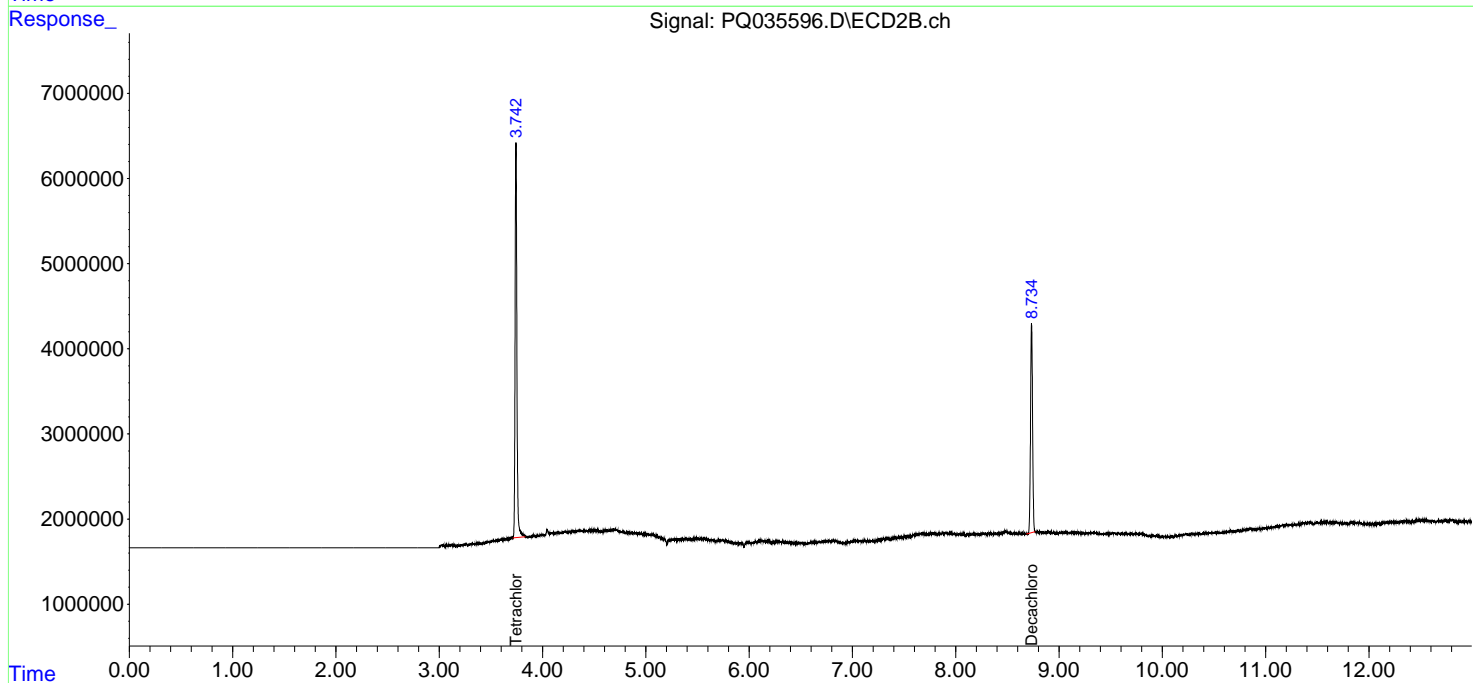
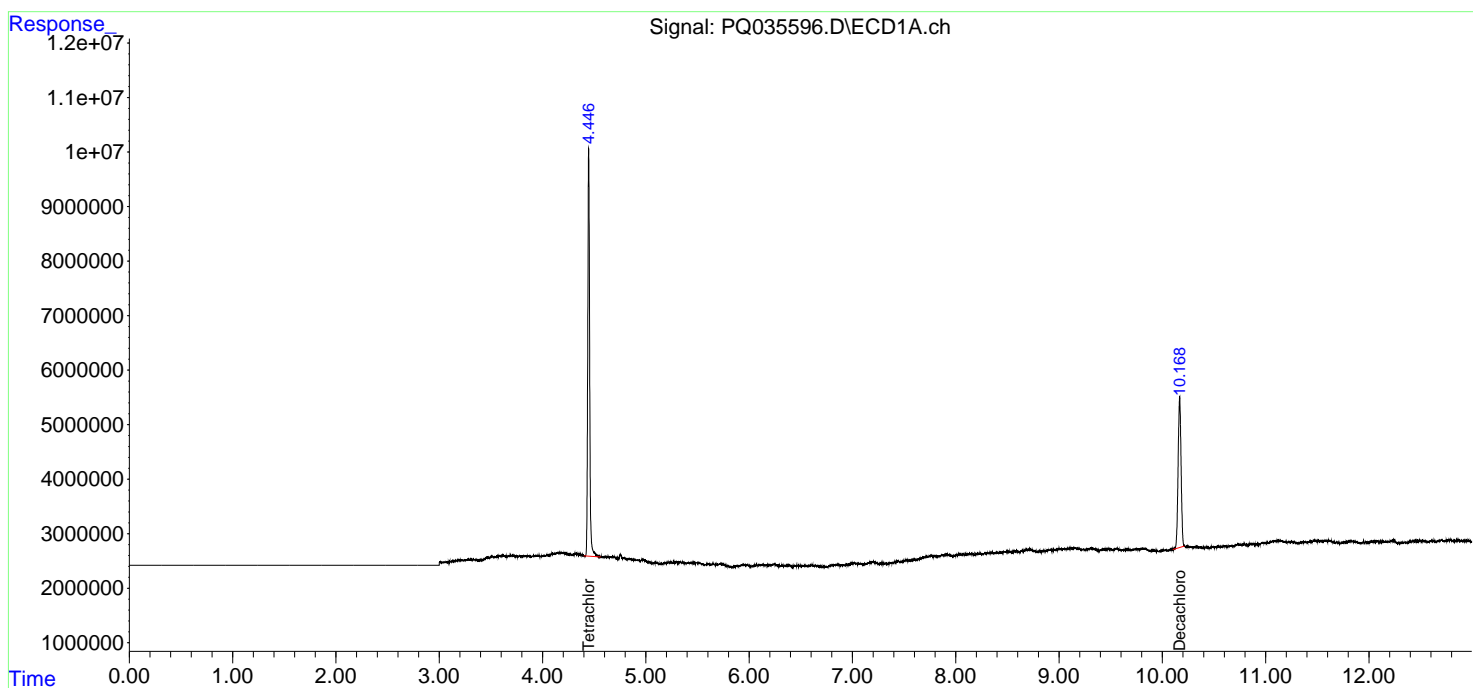
(f)=RT Delta > 1/2 Window (#)=Amounts differ by > 25% (m)=manual int.

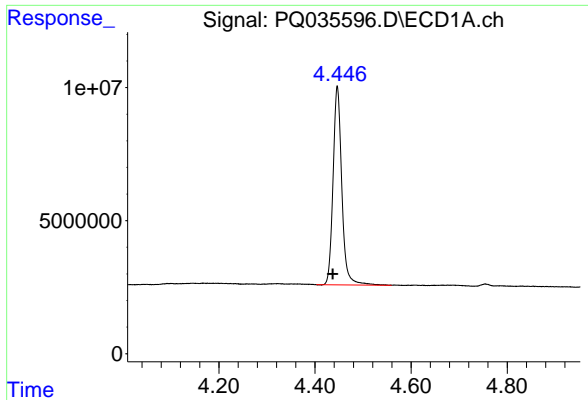
Data Path : Z:\pestpcbsrv\HPCHEM1\ECD\_Q\Data\PQ121718\  
 Data File : PQ035596.D  
 Signal(s) : Signal #1: ECD1A.ch Signal #2: ECD2B.ch  
 Acq On : 17 Dec 2018 13:58  
 Operator : SM\SJ  
 Sample : I.BLK  
 Misc :  
 ALS Vial : 2 Sample Multiplier: 1

Instrument :  
 ECD\_Q  
 ClientSampled :  
 I.BLK

Integration File signal 1: autoint1.e  
 Integration File signal 2: autoint2.e  
 Quant Time: Dec 18 01:21:20 2018  
 Quant Method : Z:\pestpcbsrv\HPCHEM1\ECD\_Q\Method\PQ121318.M  
 Quant Title : GC EXTRACTABLES  
 QLast Update : Wed Dec 12 22:07:58 2018  
 Response via : Initial Calibration  
 Integrator: ChemStation

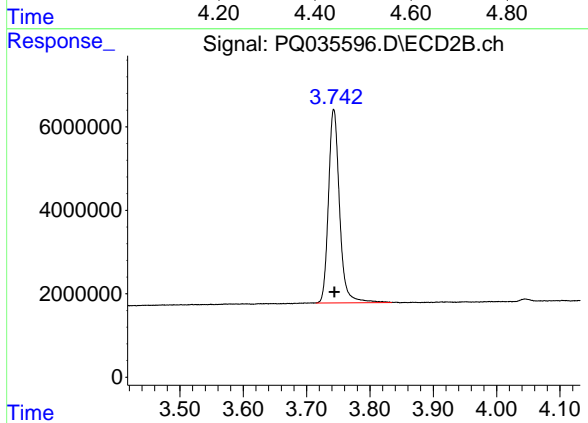
Volume Inj. : 2 µl  
 Signal #1 Phase : ZB-MR1 Signal #2 Phase: ZB-MR2  
 Signal #1 Info : 30Mx0.32mmx 0.50µm Signal #2 Info : 30M x 0.32mm x 0.25µm



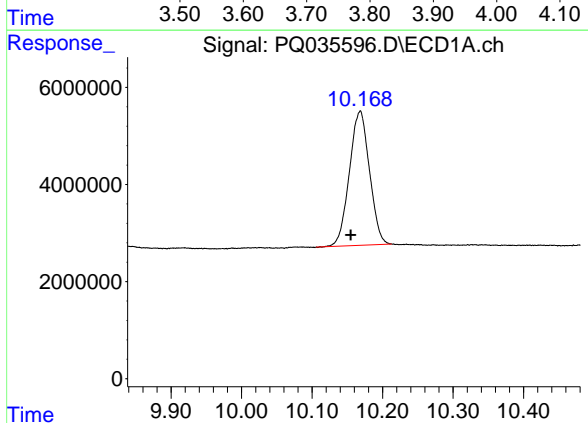


#1 Tetrachloro-m-xylene  
 R.T.: 4.447 min  
 Delta R.T.: 0.010 min  
 Response: 94408902  
 Conc: 24.13 ng/ml

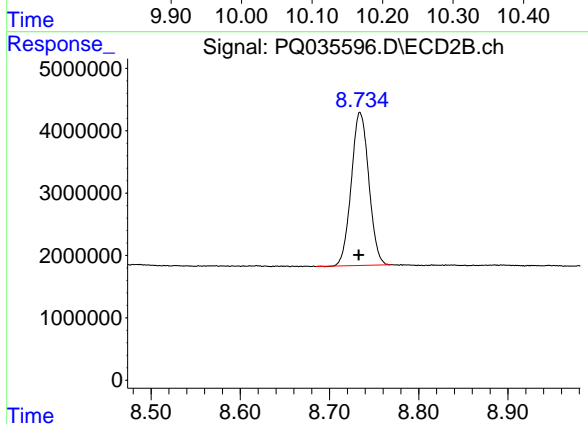
Instrument :  
 ECD\_Q  
 ClientSampled :  
 I.BLK



#1 Tetrachloro-m-xylene  
 R.T.: 3.743 min  
 Delta R.T.: -0.001 min  
 Response: 56342087  
 Conc: 25.22 ng/ml



#2 Decachlorobiphenyl  
 R.T.: 10.168 min  
 Delta R.T.: 0.014 min  
 Response: 54654234  
 Conc: 18.54 ng/ml



#2 Decachlorobiphenyl  
 R.T.: 8.734 min  
 Delta R.T.: 0.002 min  
 Response: 33436423  
 Conc: 18.92 ng/ml