

Data Path : Z:\pestpcbsrv\HPCHEM1\ECD_Q\Data\PQ121718\
 Data File : PQ035605.D
 Signal(s) : Signal #1: ECD1A.ch Signal #2: ECD2B.ch
 Acq On : 17 Dec 2018 17:01
 Operator : SM\SJ
 Sample : PB115743BL
 Misc :
 ALS Vial : 4 Sample Multiplier: 1

Instrument :
 ECD_Q
 ClientSampleId :
 PB115743BL

Integration File signal 1: autoint1.e
 Integration File signal 2: autoint2.e
 Quant Time: Dec 18 01:25:25 2018
 Quant Method : Z:\pestpcbsrv\HPCHEM1\ECD_Q\Method\PQ121318.M
 Quant Title : GC EXTRACTABLES
 QLast Update : Wed Dec 12 22:07:58 2018
 Response via : Initial Calibration
 Integrator: ChemStation

Volume Inj. : 2 µl
 Signal #1 Phase : ZB-MR1 Signal #2 Phase: ZB-MR2
 Signal #1 Info : 30Mx0.32mmx 0.50µ Signal #2 Info : 30M x 0.32mm x 0.25µm

Compound	RT#1	RT#2	Resp#1	Resp#2	ng/ml	ng/ml

System Monitoring Compounds						
1) SA Tetrachlo...	4.445	3.743	94756213	54662463	24.218	24.464
2) SA Decachlor...	10.167	8.735	56304751	34572293	19.102	19.560

Target Compounds

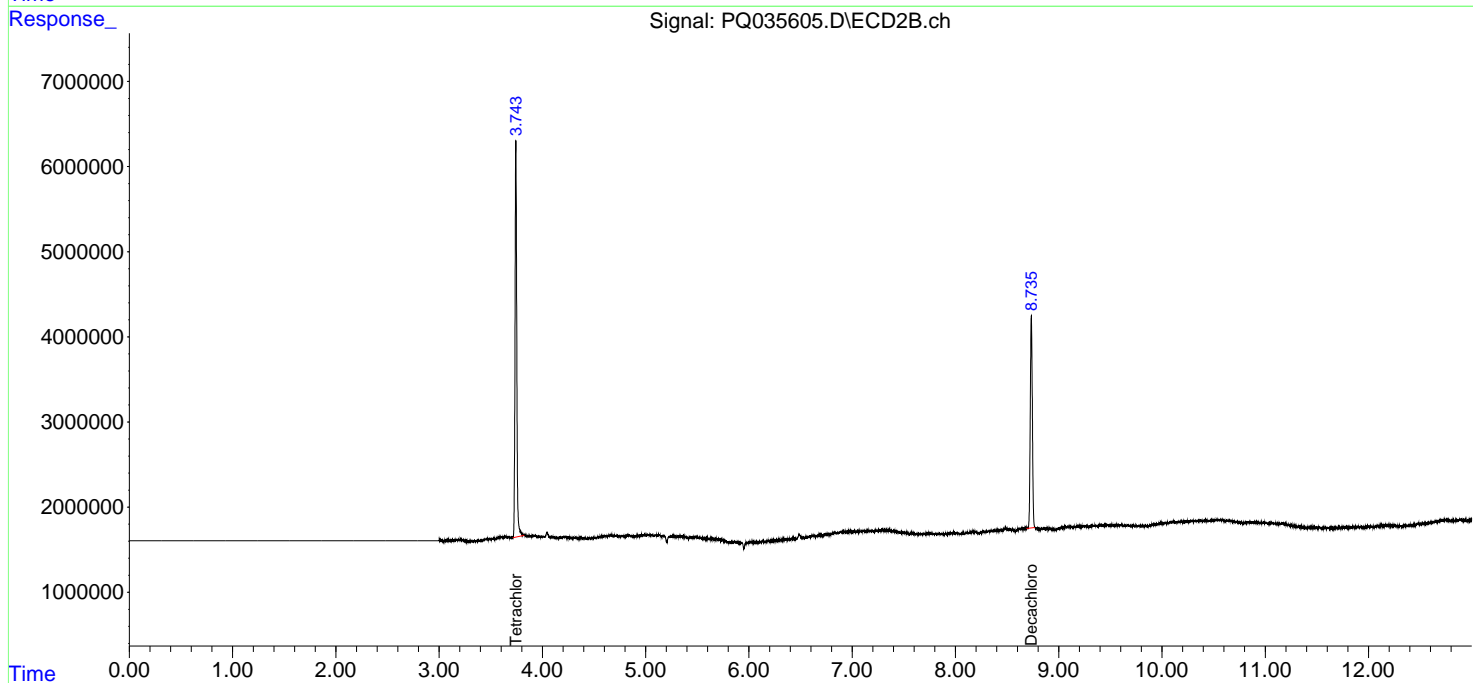
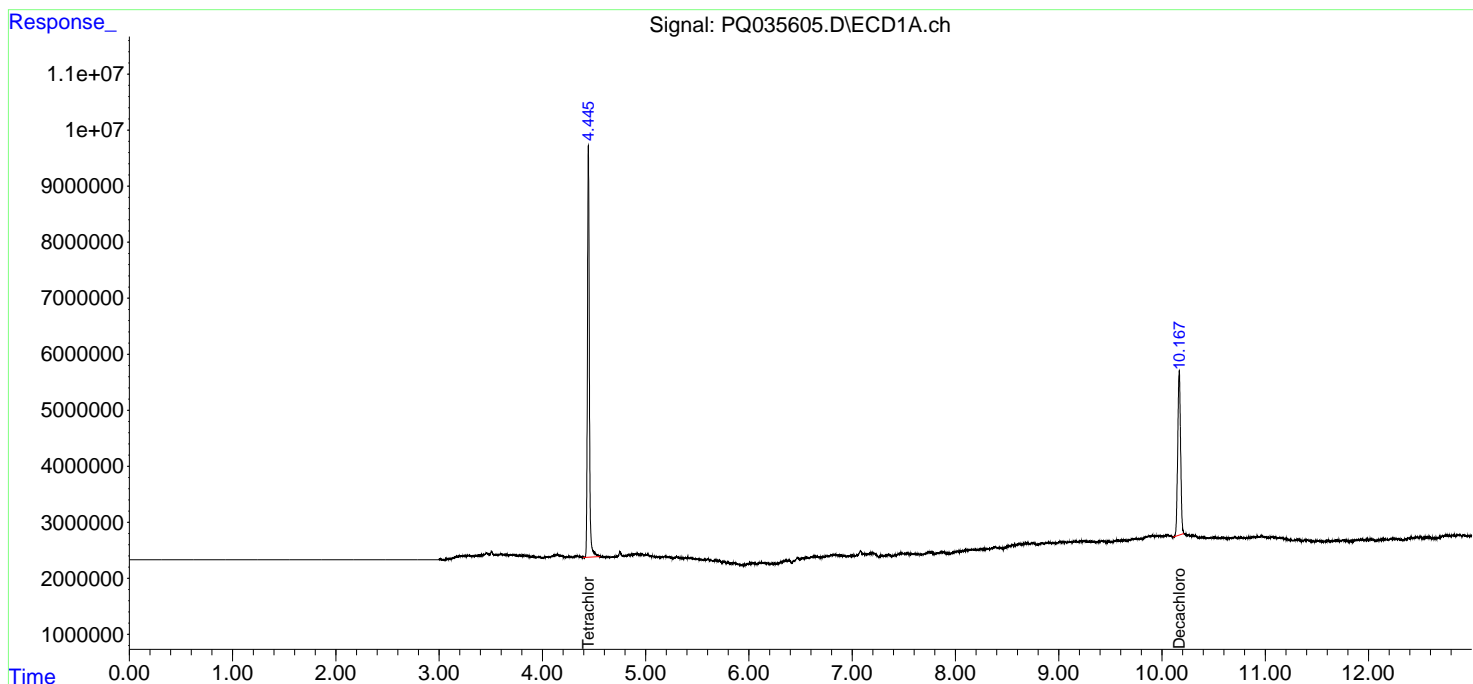
(f)=RT Delta > 1/2 Window (#)=Amounts differ by > 25% (m)=manual int.

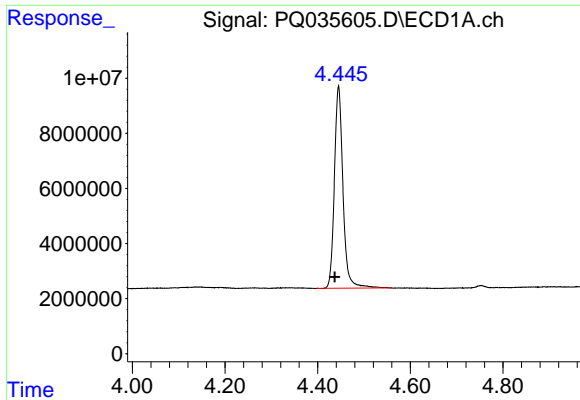
Data Path : Z:\pestpcbsrv\HPCHEM1\ECD_Q\Data\PQ121718\
 Data File : PQ035605.D
 Signal(s) : Signal #1: ECD1A.ch Signal #2: ECD2B.ch
 Acq On : 17 Dec 2018 17:01
 Operator : SM\SJ
 Sample : PB115743BL
 Misc :
 ALS Vial : 4 Sample Multiplier: 1

Instrument :
 ECD_Q
 ClientSampled :
 PB115743BL

Integration File signal 1: autoint1.e
 Integration File signal 2: autoint2.e
 Quant Time: Dec 18 01:25:25 2018
 Quant Method : Z:\pestpcbsrv\HPCHEM1\ECD_Q\Method\PQ121318.M
 Quant Title : GC EXTRACTABLES
 QLast Update : Wed Dec 12 22:07:58 2018
 Response via : Initial Calibration
 Integrator: ChemStation

Volume Inj. : 2 µl
 Signal #1 Phase : ZB-MR1 Signal #2 Phase: ZB-MR2
 Signal #1 Info : 30Mx0.32mmx 0.50µ Signal #2 Info : 30M x 0.32mm x 0.25µm

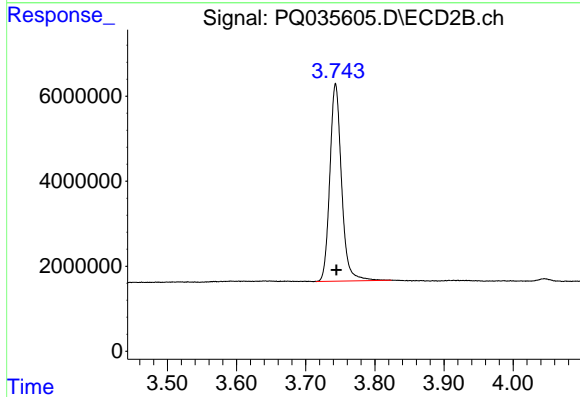




#1 Tetrachloro-m-xylene

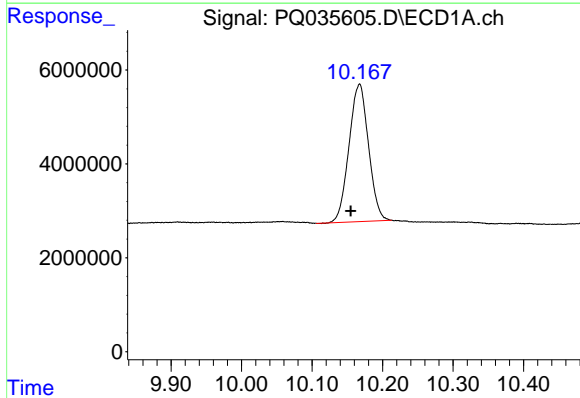
R.T.: 4.445 min
Delta R.T.: 0.008 min
Response: 94756213
Conc: 24.22 ng/ml

Instrument :
ECD_Q
ClientSampleId :
PB115743BL



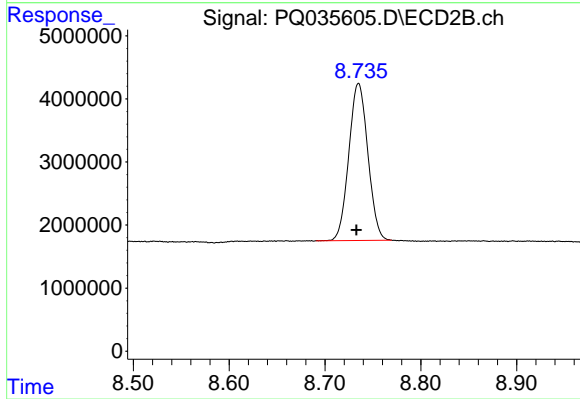
#1 Tetrachloro-m-xylene

R.T.: 3.743 min
Delta R.T.: 0.000 min
Response: 54662463
Conc: 24.46 ng/ml



#2 Decachlorobiphenyl

R.T.: 10.167 min
Delta R.T.: 0.013 min
Response: 56304751
Conc: 19.10 ng/ml



#2 Decachlorobiphenyl

R.T.: 8.735 min
Delta R.T.: 0.002 min
Response: 34572293
Conc: 19.56 ng/ml