

Data Path : Z:\pestpcbsrv\HPCHEM1\ECD_Q\Data\PQ121924\
 Data File : PQ069737.D
 Signal(s) : Signal #1: ECD1A.ch Signal #2: ECD2B.ch
 Acq On : 19 Dec 2024 19:06
 Operator : YP\AJ
 Sample : AR1242CCC400
 Misc :
 ALS Vial : 4 Sample Multiplier: 1

Instrument :
 ECD_Q
 ClientSampleId :
 AR12423121

Integration File signal 1: autoint1.e
 Integration File signal 2: autoint2.e
 Quant Time: Dec 19 21:09:48 2024
 Quant Method : Z:\pestpcbsrv\HPCHEM1\ECD_Q\Method\PQ121224CLP.M
 Quant Title : GC EXTRACTABLES
 QLast Update : Fri Dec 13 04:43:19 2024
 Response via : Initial Calibration
 Integrator: ChemStation

Volume Inj. : 1 µl
 Signal #1 Phase : ZB MR1 Signal #2 Phase: ZB MR2
 Signal #1 Info : 30Mx0.32mmx 0.5µm Signal #2 Info : 30M x 0.32mm x 0.25µm

Compound	RT#1	RT#2	Resp#1	Resp#2	ng/ml	ng/ml
System Monitoring Compounds						
1) SA Tetrachlo...	3.416	2.788	97483328	128.0E6	19.307	18.619
2) SA Decachlor...	8.526	7.564	90726119	204.9E6	36.104	37.670
Target Compounds						
3) L1 AR-1016-1	4.500	3.792	47979062	68099129	320.974	306.626
4) L1 AR-1016-2	4.519	3.808	75533983	102.2E6	318.557	305.567
5) L1 AR-1016-3	4.577	3.968	47222992	56636529	320.165	314.111
6) L1 AR-1016-4	4.666	4.017	37713769	46545762	319.212	301.910
7) L1 AR-1016-5	4.951	4.213	37901875	59768630	323.053	308.089
8) L2 AR-1221-1	3.607	2.987	5858463	7679990	103.193	92.769
9) L2 AR-1221-2	3.689	3.064	7403496	10288854	188.057	177.271
10) L2 AR-1221-3	3.757	3.133	28993312	40597605	222.965	217.138
11) L3 AR-1232-1	3.757	3.133	28993312	40597605	280.395	274.578
12) L3 AR-1232-2	4.246	3.808	38922449	102.2E6	712.176	674.367
13) L3 AR-1232-3	4.519	3.968	75533983	56636529	720.222	703.175
14) L3 AR-1232-4	4.666	4.055	37713769	53467651	734.497	794.438
15) L3 AR-1232-5	4.765	4.213	29000989	59768630	813.221	770.178
16) L4 AR-1242-1	4.500	3.792	47979062	68099129	386.135	376.354
17) L4 AR-1242-2	4.519	3.808	75533983	102.2E6	388.187	377.760
18) L4 AR-1242-3	4.577	3.968	47222992	56636529	381.042	381.473
19) L4 AR-1242-4	4.666	4.055	37713769	53467651	380.686	392.372
20) L4 AR-1242-5	5.373	4.551	41347517	68987371	376.376	380.788
21) L5 AR-1248-1	4.500	3.792	47979062	68099129	522.941	512.908
22) L5 AR-1248-2	4.765	4.017	29000989	46545762	224.256	229.074
23) L5 AR-1248-3	4.951	4.055	37901875	53467651	245.686	270.222
24) L5 AR-1248-4	5.339	4.213	38778889	59768630	226.062	245.016
25) L5 AR-1248-5	5.373	4.589	41347517	58703978	239.499	243.041
26) L6 AR-1254-1	5.311	4.551	29140163	68987371	162.637	185.646
27) L6 AR-1254-2	5.523	4.698	34384463	17696645	124.466	54.146 #
28) L6 AR-1254-3	5.876	5.080	14050410	24733694	49.875	47.222
29) L6 AR-1254-4	6.157	5.305	11336730	17970345	57.205	56.505
30) L6 AR-1254-5	6.567	5.712	2051436	5976153	9.264	12.726 #
31) L7 AR-1260-1	6.045	5.212	1967545	10226948	9.382	28.640 #
32) L7 AR-1260-2	6.299	5.398	2494834	2752524	10.111	6.471 #
33) L7 AR-1260-3	0.000	5.534	0	2261889	N.D.	5.555 #
34) L7 AR-1260-4	6.839	6.032	671745	2020556	3.335	5.653 #
36) L8 AR-1262-1	6.839	5.712f	671745	5976153	2.656	12.160 #
37) L8 AR-1262-2	0.000	6.032	0	2020556	N.D.	4.432 #
45) L9 AR-1268-5	8.301	7.345	575439	2005371	0.492	0.847 #

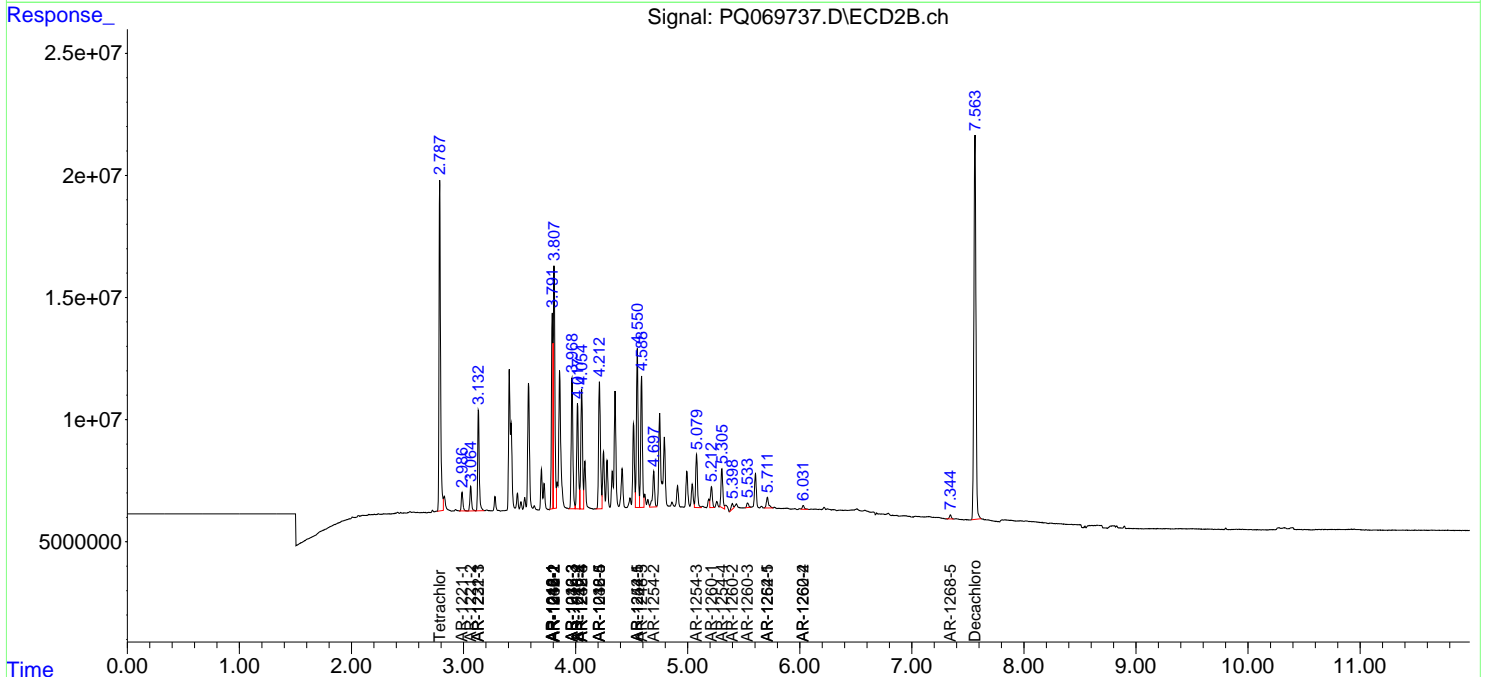
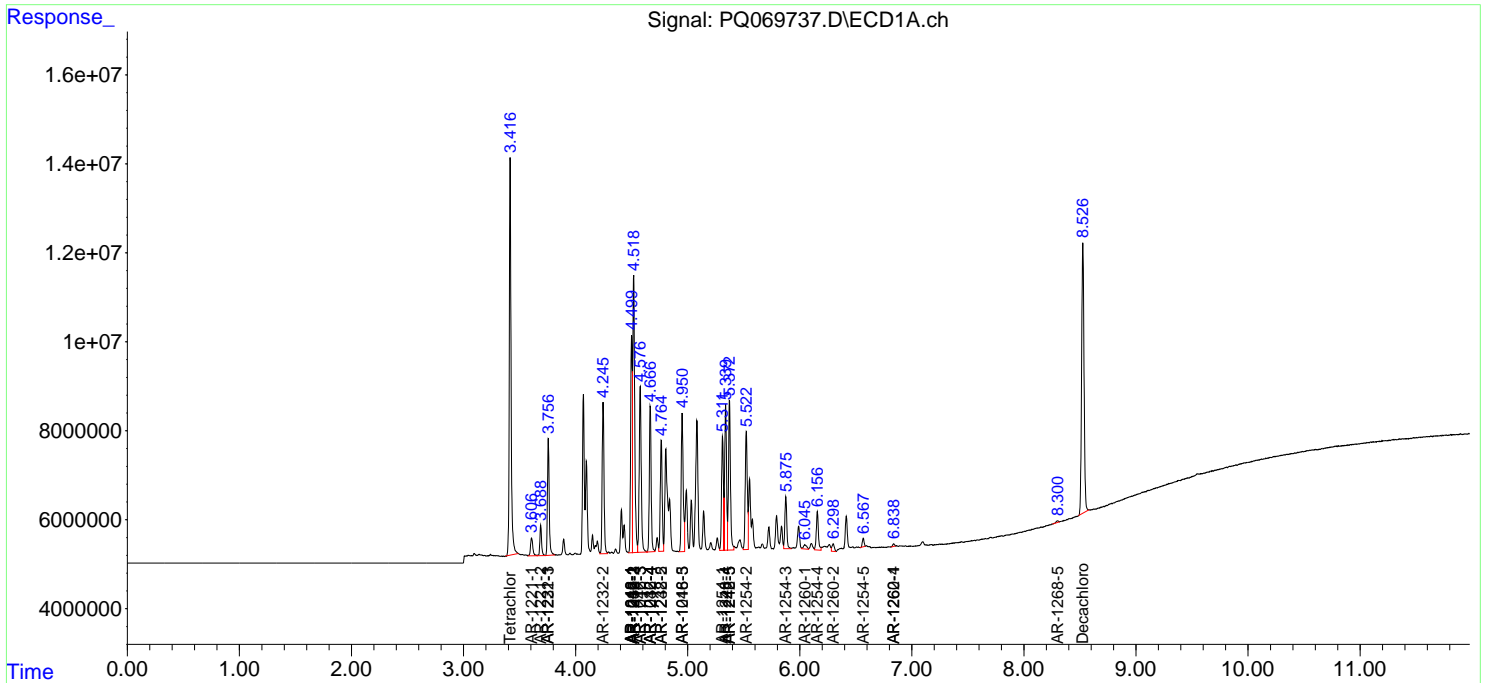
(f)=RT Delta > 1/2 Window (#)=Amounts differ by > 25% (m)=manual int.

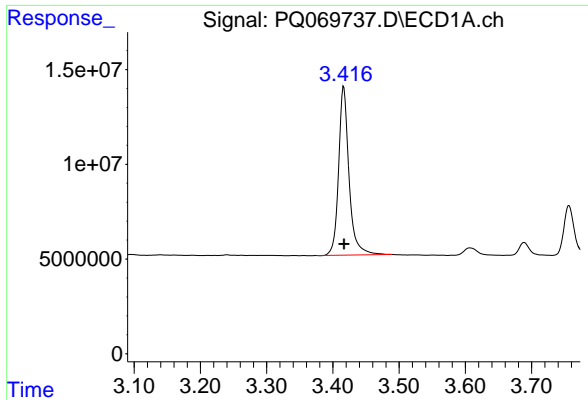
Data Path : Z:\pestpcbsrv\HPCHEM1\ECD_Q\Data\PQ121924\
 Data File : PQ069737.D
 Signal(s) : Signal #1: ECD1A.ch Signal #2: ECD2B.ch
 Acq On : 19 Dec 2024 19:06
 Operator : YP\AJ
 Sample : AR1242CCC400
 Misc :
 ALS Vial : 4 Sample Multiplier: 1

Instrument :
 ECD_Q
 ClientSampleId :
 AR12423121

Integration File signal 1: autoint1.e
 Integration File signal 2: autoint2.e
 Quant Time: Dec 19 21:09:48 2024
 Quant Method : Z:\pestpcbsrv\HPCHEM1\ECD_Q\Method\PQ121224CLP.M
 Quant Title : GC EXTRACTABLES
 QLast Update : Fri Dec 13 04:43:19 2024
 Response via : Initial Calibration
 Integrator: ChemStation

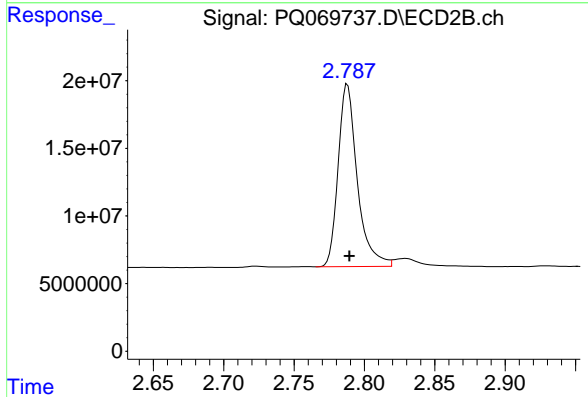
Volume Inj. : 1 µl
 Signal #1 Phase : ZB MR1 Signal #2 Phase: ZB MR2
 Signal #1 Info : 30Mx0.32mmx 0.5µm Signal #2 Info : 30M x 0.32mm x 0.25µm



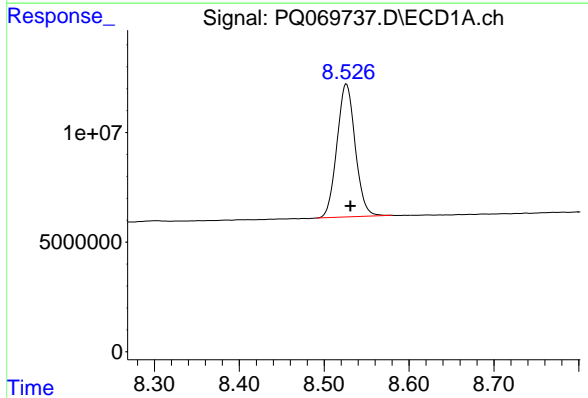


#1 Tetrachloro-m-xylene
 R.T.: 3.416 min
 Delta R.T.: 0.000 min
 Response: 97483328
 Conc: 19.31 ng/ml

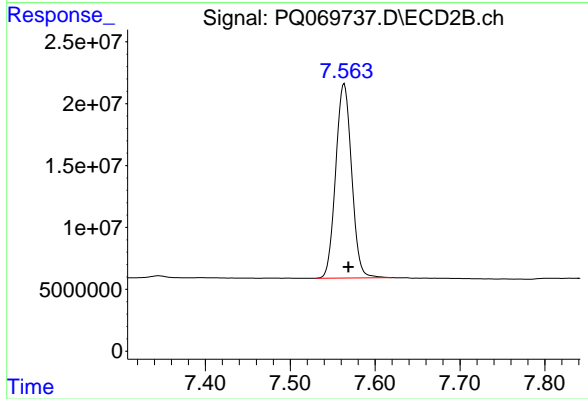
Instrument :
 ECD_Q
 ClientSampleId :
 AR12423121



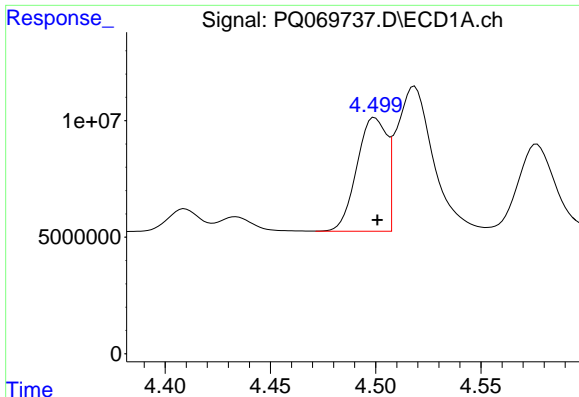
#1 Tetrachloro-m-xylene
 R.T.: 2.788 min
 Delta R.T.: -0.001 min
 Response: 128002000
 Conc: 18.62 ng/ml



#2 Decachlorobiphenyl
 R.T.: 8.526 min
 Delta R.T.: -0.005 min
 Response: 90726119
 Conc: 36.10 ng/ml



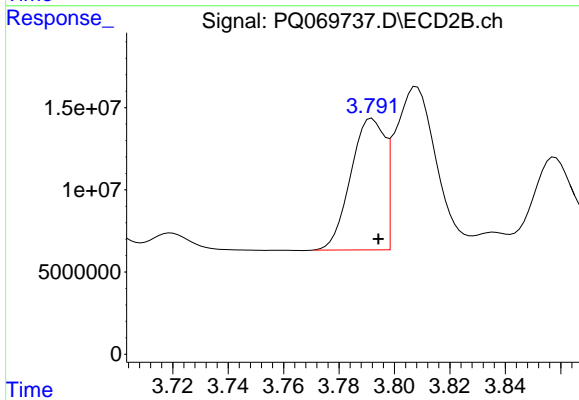
#2 Decachlorobiphenyl
 R.T.: 7.564 min
 Delta R.T.: -0.005 min
 Response: 204881222
 Conc: 37.67 ng/ml



#3 AR-1016-1

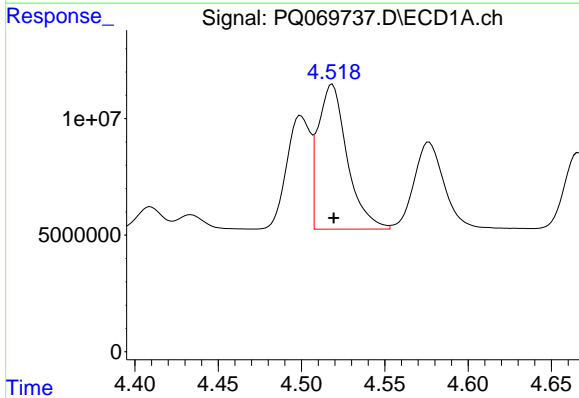
R.T.: 4.500 min
 Delta R.T.: -0.001 min
 Response: 47979062
 Conc: 320.97 ng/ml

Instrument :
 ECD_Q
 ClientSampleId :
 AR12423121



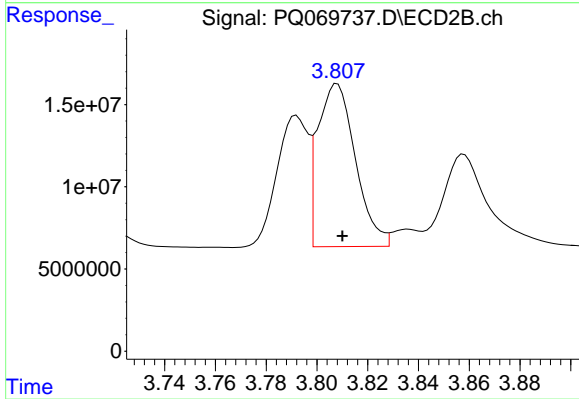
#3 AR-1016-1

R.T.: 3.792 min
 Delta R.T.: -0.002 min
 Response: 68099129
 Conc: 306.63 ng/ml



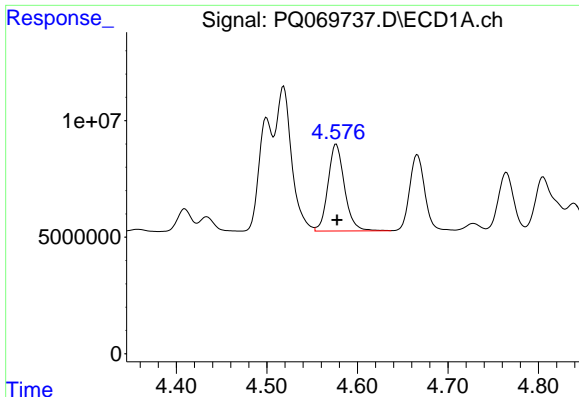
#4 AR-1016-2

R.T.: 4.519 min
 Delta R.T.: 0.000 min
 Response: 75533983
 Conc: 318.56 ng/ml



#4 AR-1016-2

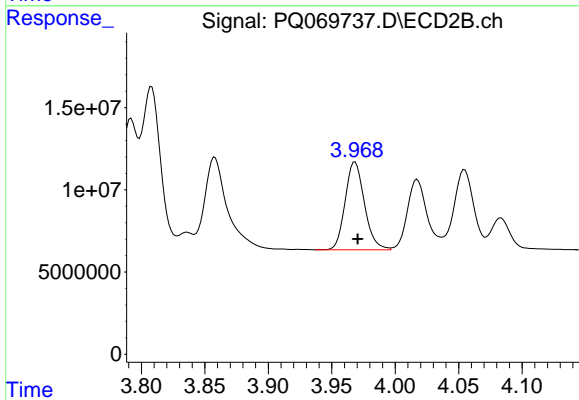
R.T.: 3.808 min
 Delta R.T.: -0.002 min
 Response: 102226172
 Conc: 305.57 ng/ml



#5 AR-1016-3

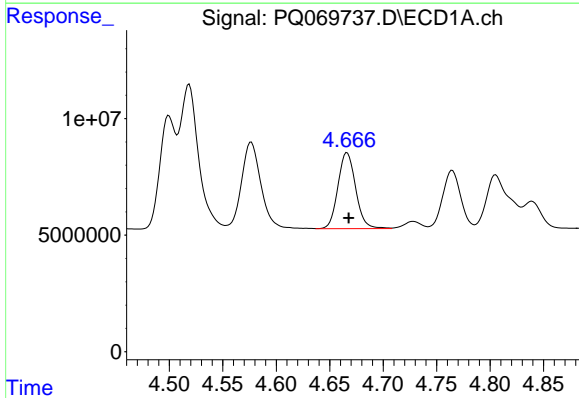
R.T.: 4.577 min
 Delta R.T.: -0.001 min
 Response: 47222992
 Conc: 320.16 ng/ml

Instrument :
 ECD_Q
 ClientSampleId :
 AR12423121



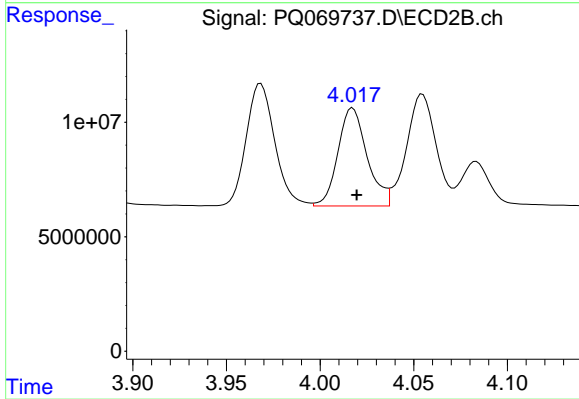
#5 AR-1016-3

R.T.: 3.968 min
 Delta R.T.: -0.002 min
 Response: 56636529
 Conc: 314.11 ng/ml



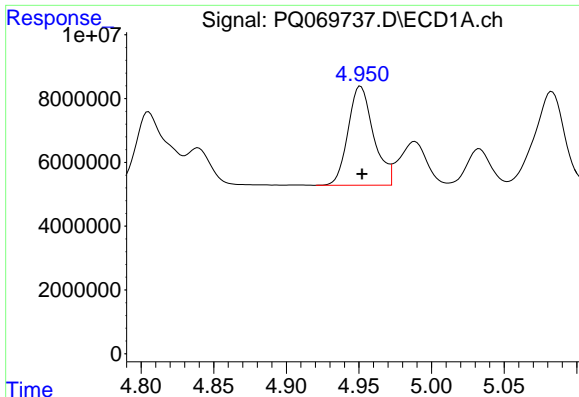
#6 AR-1016-4

R.T.: 4.666 min
 Delta R.T.: -0.001 min
 Response: 37713769
 Conc: 319.21 ng/ml



#6 AR-1016-4

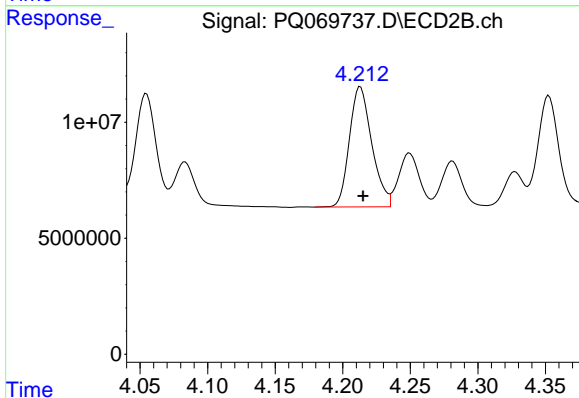
R.T.: 4.017 min
 Delta R.T.: -0.002 min
 Response: 46545762
 Conc: 301.91 ng/ml



#7 AR-1016-5

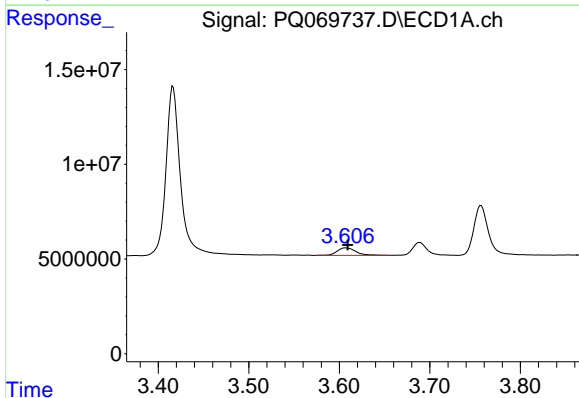
R.T.: 4.951 min
 Delta R.T.: 0.000 min
 Response: 37901875
 Conc: 323.05 ng/ml

Instrument :
 ECD_Q
 ClientSampleId :
 AR12423121



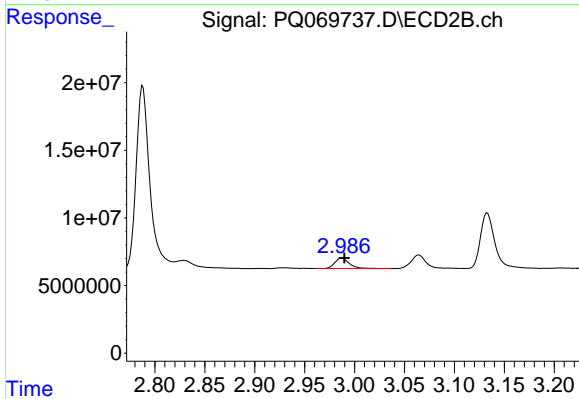
#7 AR-1016-5

R.T.: 4.213 min
 Delta R.T.: -0.002 min
 Response: 59768630
 Conc: 308.09 ng/ml



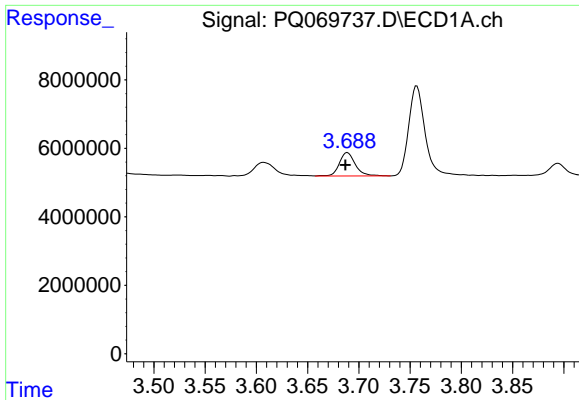
#8 AR-1221-1

R.T.: 3.607 min
 Delta R.T.: -0.002 min
 Response: 5858463
 Conc: 103.19 ng/ml



#8 AR-1221-1

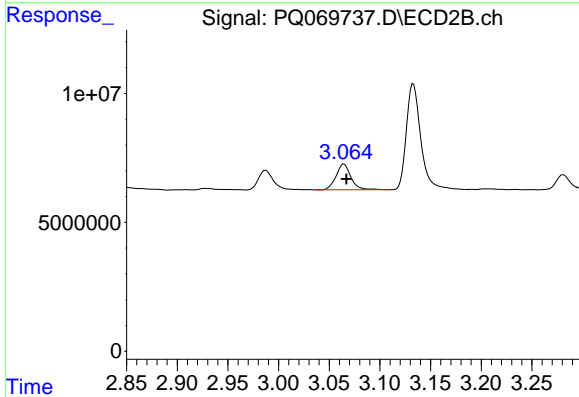
R.T.: 2.987 min
 Delta R.T.: -0.003 min
 Response: 7679990
 Conc: 92.77 ng/ml



#9 AR-1221-2

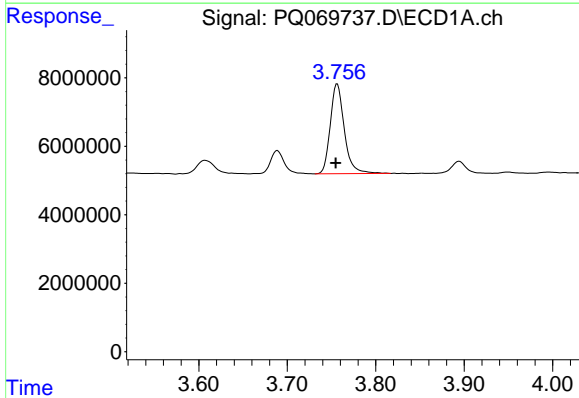
R.T.: 3.689 min
 Delta R.T.: 0.002 min
 Response: 7403496
 Conc: 188.06 ng/ml

Instrument :
 ECD_Q
 ClientSampleId :
 AR12423121



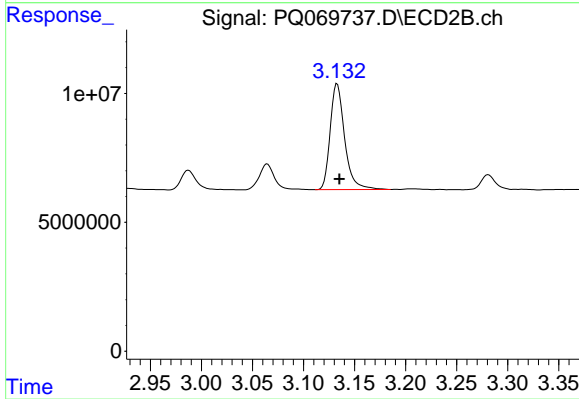
#9 AR-1221-2

R.T.: 3.064 min
 Delta R.T.: -0.002 min
 Response: 10288854
 Conc: 177.27 ng/ml



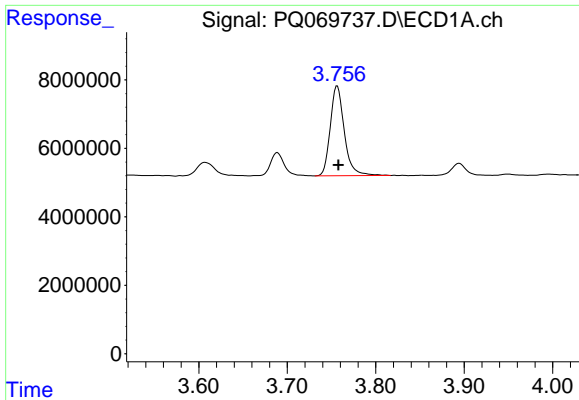
#10 AR-1221-3

R.T.: 3.757 min
 Delta R.T.: 0.002 min
 Response: 28993312
 Conc: 222.97 ng/ml



#10 AR-1221-3

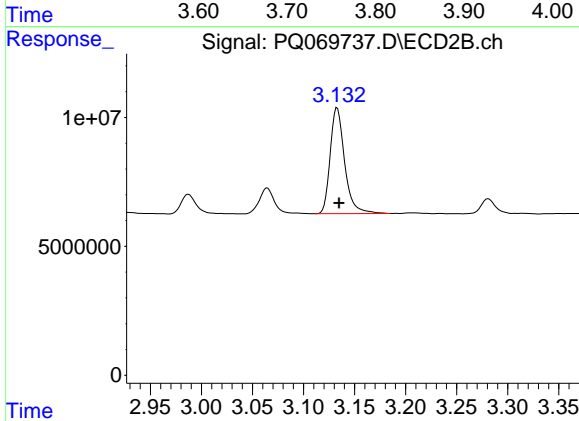
R.T.: 3.133 min
 Delta R.T.: -0.002 min
 Response: 40597605
 Conc: 217.14 ng/ml



#11 AR-1232-1

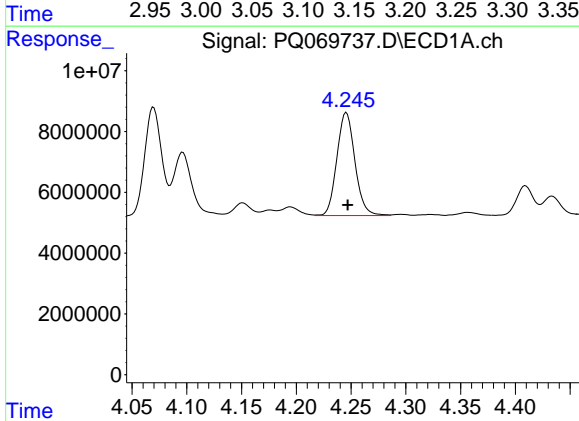
R.T.: 3.757 min
 Delta R.T.: -0.001 min
 Response: 28993312
 Conc: 280.40 ng/ml

Instrument :
 ECD_Q
 ClientSampleId :
 AR12423121



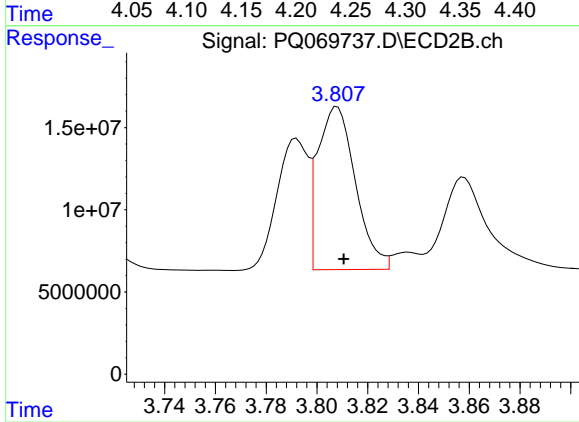
#11 AR-1232-1

R.T.: 3.133 min
 Delta R.T.: -0.002 min
 Response: 40597605
 Conc: 274.58 ng/ml



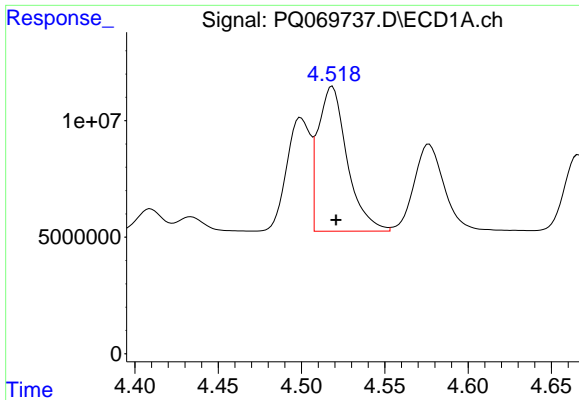
#12 AR-1232-2

R.T.: 4.246 min
 Delta R.T.: -0.001 min
 Response: 38922449
 Conc: 712.18 ng/ml



#12 AR-1232-2

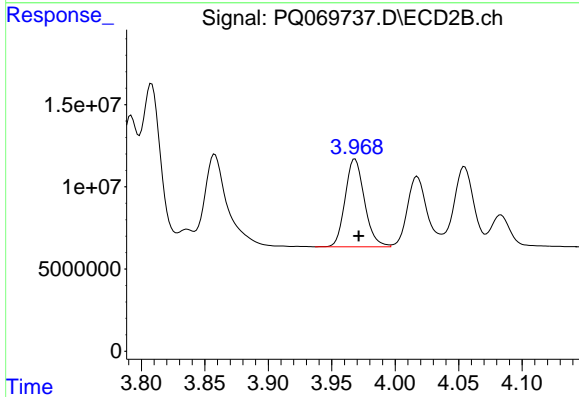
R.T.: 3.808 min
 Delta R.T.: -0.003 min
 Response: 102226172
 Conc: 674.37 ng/ml



#13 AR-1232-3

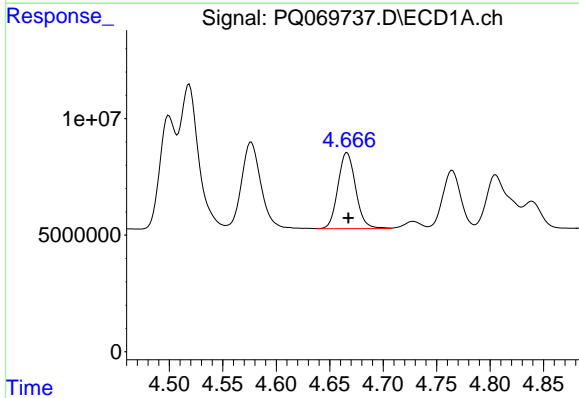
R.T.: 4.519 min
 Delta R.T.: -0.002 min
 Response: 75533983
 Conc: 720.22 ng/ml

Instrument :
 ECD_Q
 ClientSampleId :
 AR12423121



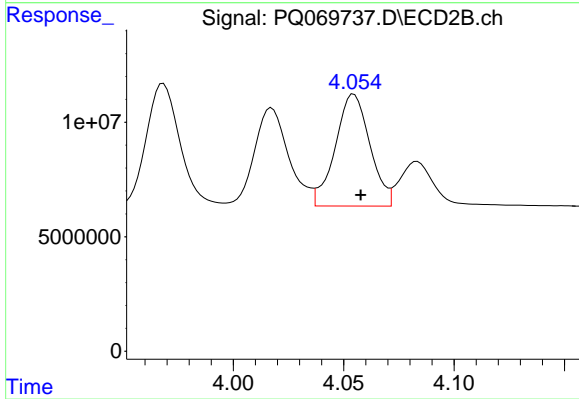
#13 AR-1232-3

R.T.: 3.968 min
 Delta R.T.: -0.003 min
 Response: 56636529
 Conc: 703.18 ng/ml



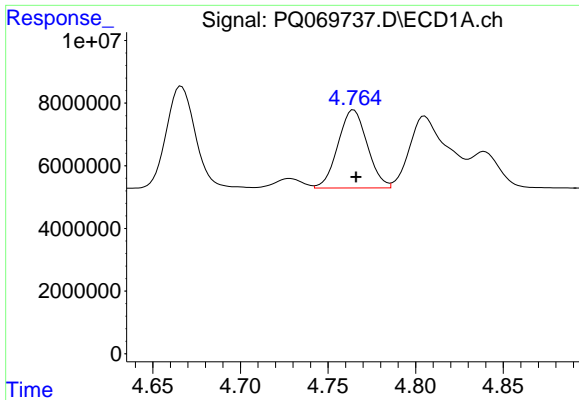
#14 AR-1232-4

R.T.: 4.666 min
 Delta R.T.: -0.001 min
 Response: 37713769
 Conc: 734.50 ng/ml



#14 AR-1232-4

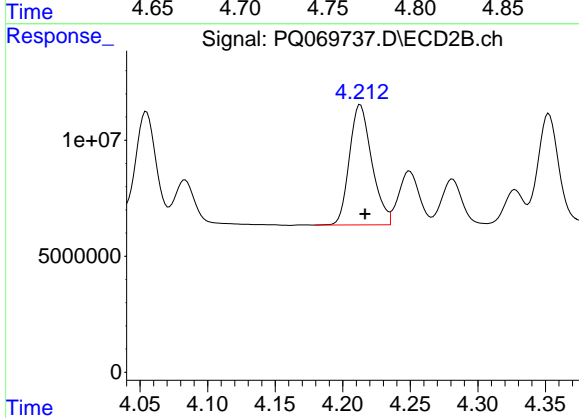
R.T.: 4.055 min
 Delta R.T.: -0.003 min
 Response: 53467651
 Conc: 794.44 ng/ml



#15 AR-1232-5

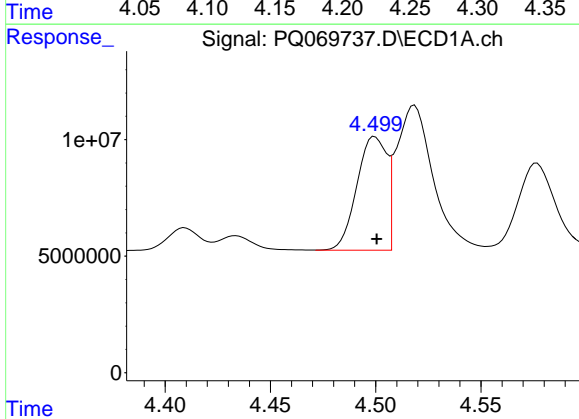
R.T.: 4.765 min
 Delta R.T.: -0.001 min
 Response: 29000989
 Conc: 813.22 ng/ml

Instrument :
 ECD_Q
 ClientSampleId :
 AR12423121



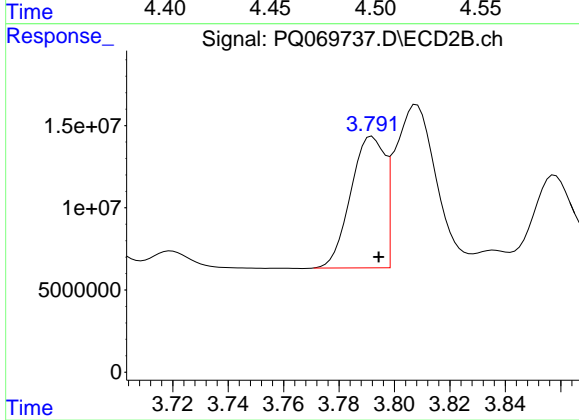
#15 AR-1232-5

R.T.: 4.213 min
 Delta R.T.: -0.004 min
 Response: 59768630
 Conc: 770.18 ng/ml



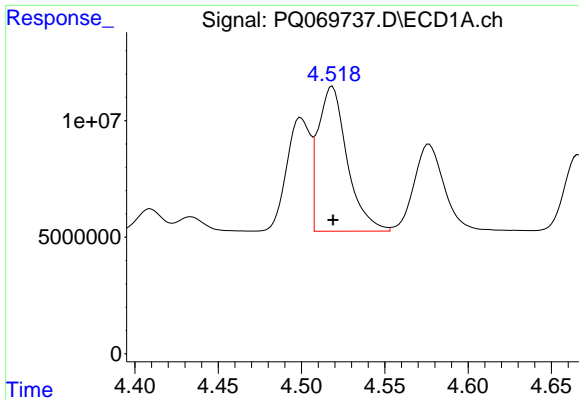
#16 AR-1242-1

R.T.: 4.500 min
 Delta R.T.: 0.000 min
 Response: 47979062
 Conc: 386.14 ng/ml



#16 AR-1242-1

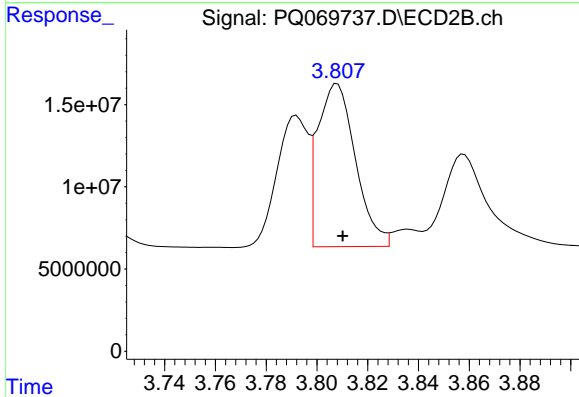
R.T.: 3.792 min
 Delta R.T.: -0.002 min
 Response: 68099129
 Conc: 376.35 ng/ml



#17 AR-1242-2

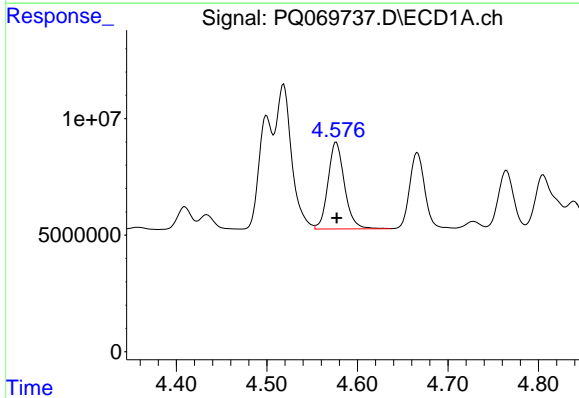
R.T.: 4.519 min
 Delta R.T.: 0.000 min
 Response: 75533983
 Conc: 388.19 ng/ml

Instrument :
 ECD_Q
 ClientSampleId :
 AR12423121



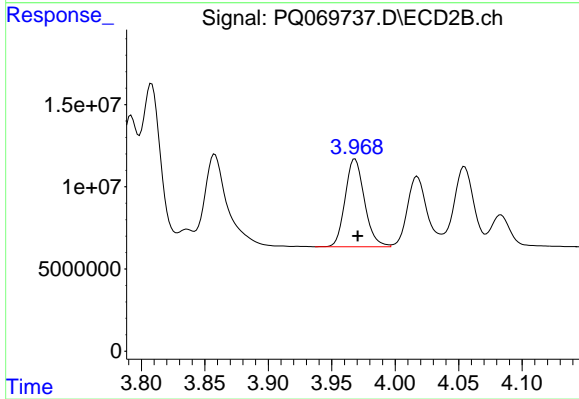
#17 AR-1242-2

R.T.: 3.808 min
 Delta R.T.: -0.002 min
 Response: 102226172
 Conc: 377.76 ng/ml



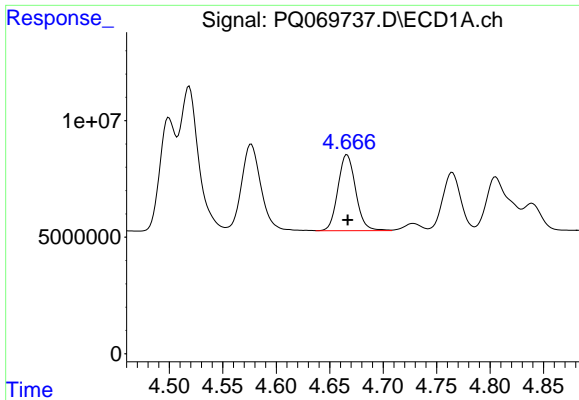
#18 AR-1242-3

R.T.: 4.577 min
 Delta R.T.: 0.000 min
 Response: 47222992
 Conc: 381.04 ng/ml



#18 AR-1242-3

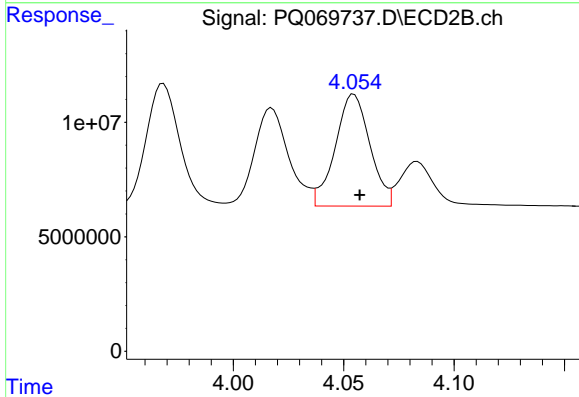
R.T.: 3.968 min
 Delta R.T.: -0.002 min
 Response: 56636529
 Conc: 381.47 ng/ml



#19 AR-1242-4

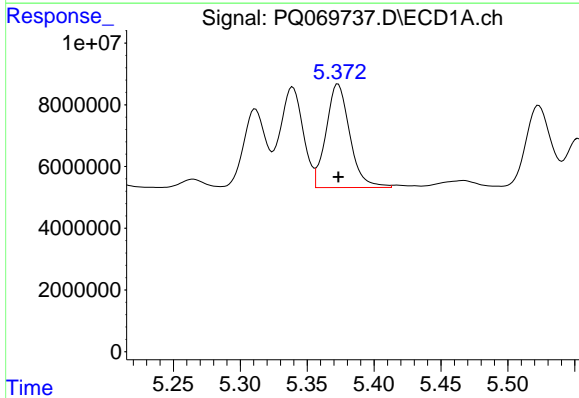
R.T.: 4.666 min
 Delta R.T.: 0.000 min
 Response: 37713769
 Conc: 380.69 ng/ml

Instrument :
 ECD_Q
 ClientSampleId :
 AR12423121



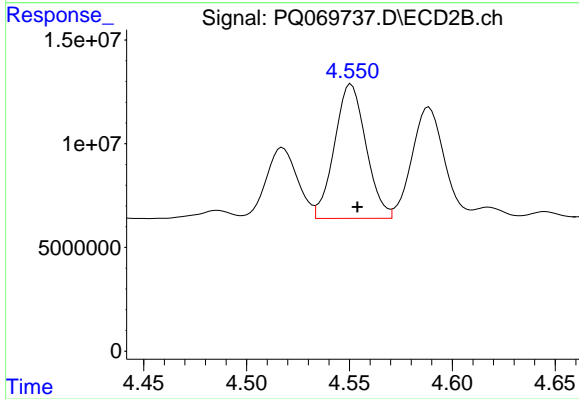
#19 AR-1242-4

R.T.: 4.055 min
 Delta R.T.: -0.003 min
 Response: 53467651
 Conc: 392.37 ng/ml



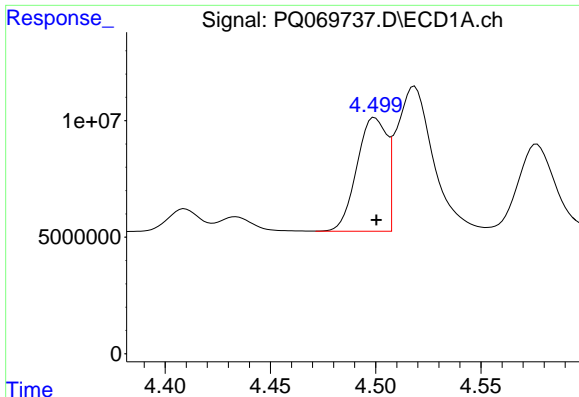
#20 AR-1242-5

R.T.: 5.373 min
 Delta R.T.: 0.000 min
 Response: 41347517
 Conc: 376.38 ng/ml



#20 AR-1242-5

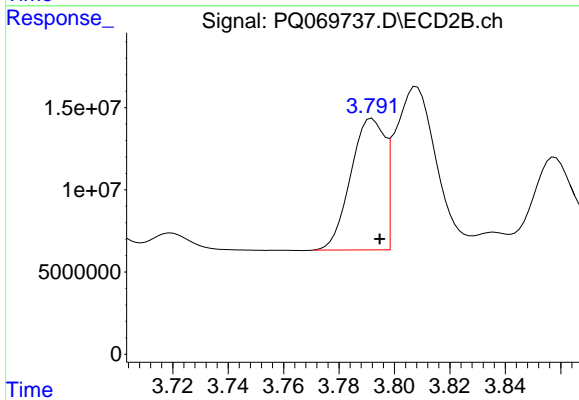
R.T.: 4.551 min
 Delta R.T.: -0.003 min
 Response: 68987371
 Conc: 380.79 ng/ml



#21 AR-1248-1

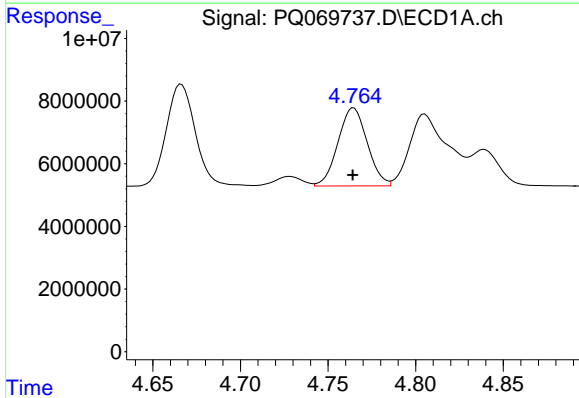
R.T.: 4.500 min
 Delta R.T.: 0.000 min
 Response: 47979062
 Conc: 522.94 ng/ml

Instrument :
 ECD_Q
 ClientSampleId :
 AR12423121



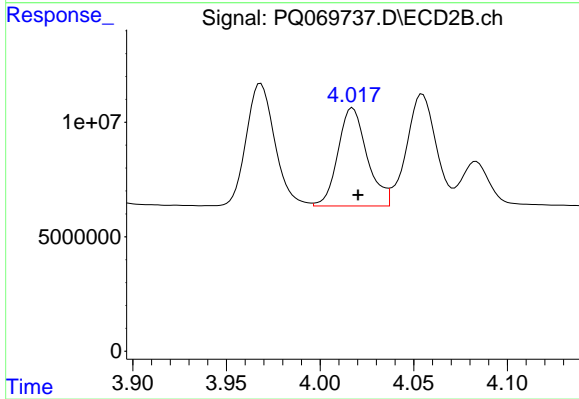
#21 AR-1248-1

R.T.: 3.792 min
 Delta R.T.: -0.003 min
 Response: 68099129
 Conc: 512.91 ng/ml



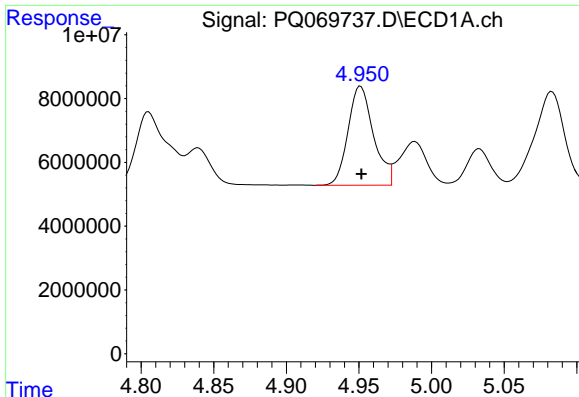
#22 AR-1248-2

R.T.: 4.765 min
 Delta R.T.: 0.000 min
 Response: 29000989
 Conc: 224.26 ng/ml



#22 AR-1248-2

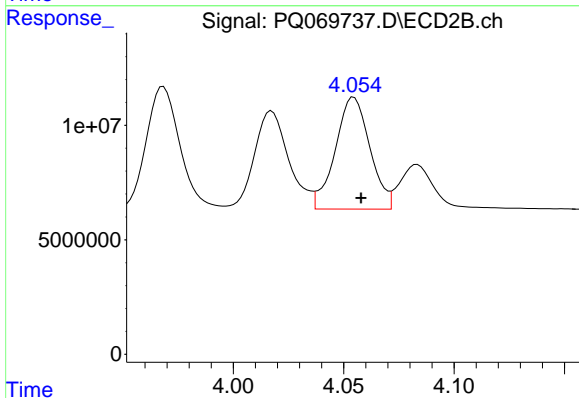
R.T.: 4.017 min
 Delta R.T.: -0.003 min
 Response: 46545762
 Conc: 229.07 ng/ml



#23 AR-1248-3

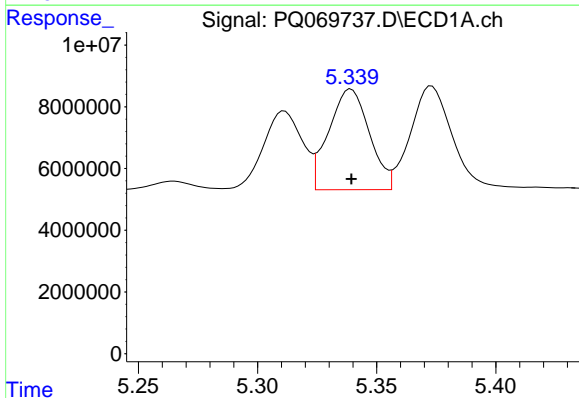
R.T.: 4.951 min
 Delta R.T.: 0.000 min
 Response: 37901875
 Conc: 245.69 ng/ml

Instrument :
 ECD_Q
 ClientSampleId :
 AR12423121



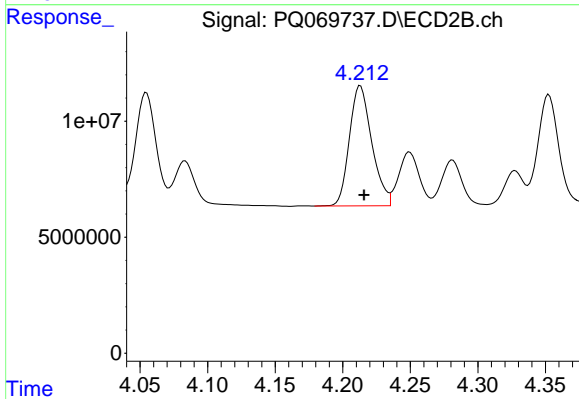
#23 AR-1248-3

R.T.: 4.055 min
 Delta R.T.: -0.003 min
 Response: 53467651
 Conc: 270.22 ng/ml



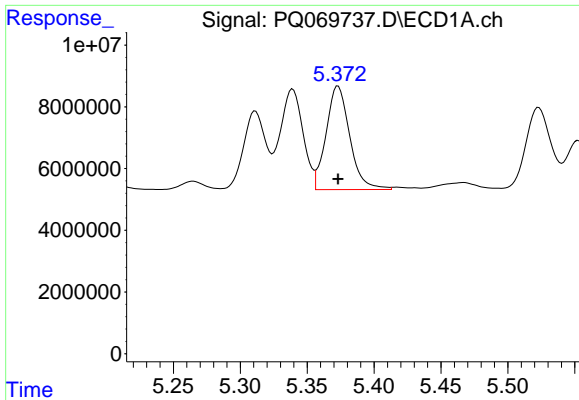
#24 AR-1248-4

R.T.: 5.339 min
 Delta R.T.: 0.000 min
 Response: 38778889
 Conc: 226.06 ng/ml



#24 AR-1248-4

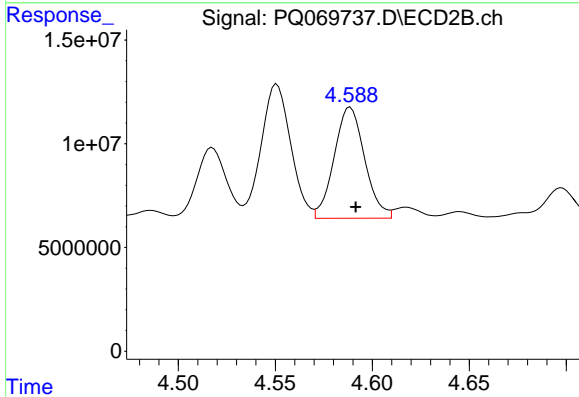
R.T.: 4.213 min
 Delta R.T.: -0.003 min
 Response: 59768630
 Conc: 245.02 ng/ml



#25 AR-1248-5

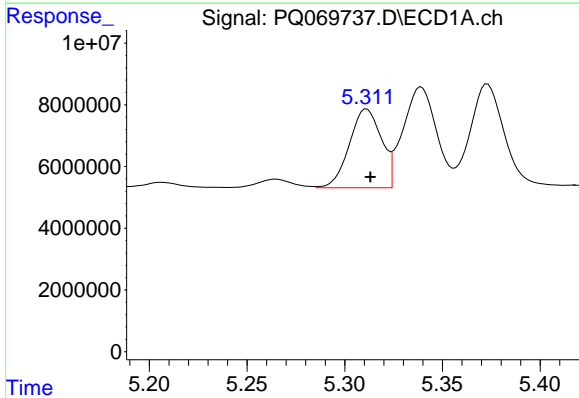
R.T.: 5.373 min
 Delta R.T.: 0.000 min
 Response: 41347517
 Conc: 239.50 ng/ml

Instrument :
 ECD_Q
 ClientSampleId :
 AR12423121



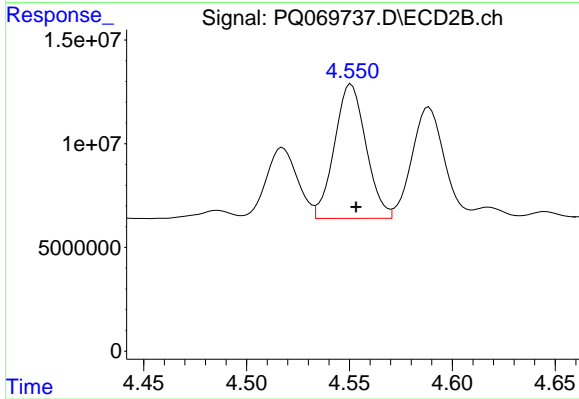
#25 AR-1248-5

R.T.: 4.589 min
 Delta R.T.: -0.003 min
 Response: 58703978
 Conc: 243.04 ng/ml



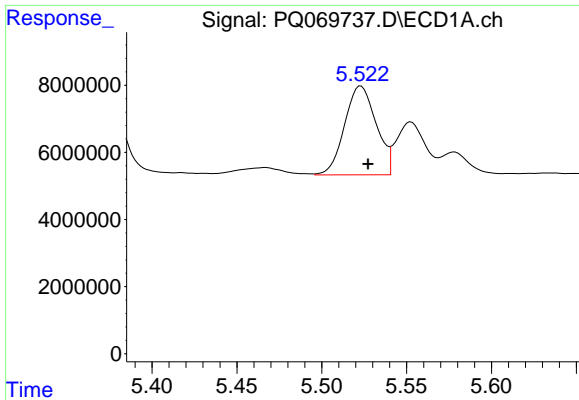
#26 AR-1254-1

R.T.: 5.311 min
 Delta R.T.: -0.002 min
 Response: 29140163
 Conc: 162.64 ng/ml



#26 AR-1254-1

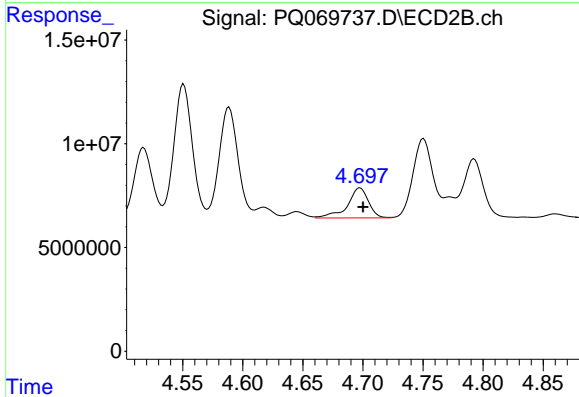
R.T.: 4.551 min
 Delta R.T.: -0.002 min
 Response: 68987371
 Conc: 185.65 ng/ml



#27 AR-1254-2

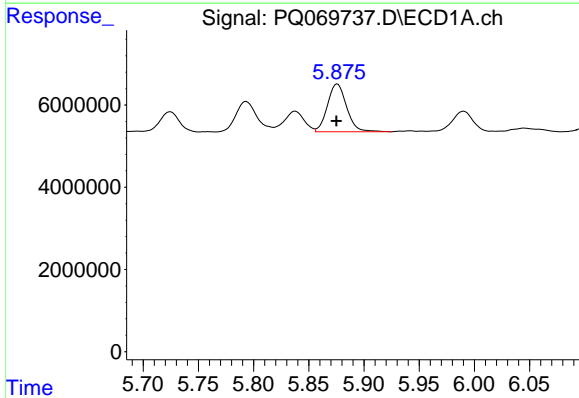
R.T.: 5.523 min
 Delta R.T.: -0.004 min
 Response: 34384463
 Conc: 124.47 ng/ml

Instrument :
 ECD_Q
 ClientSampleId :
 AR12423121



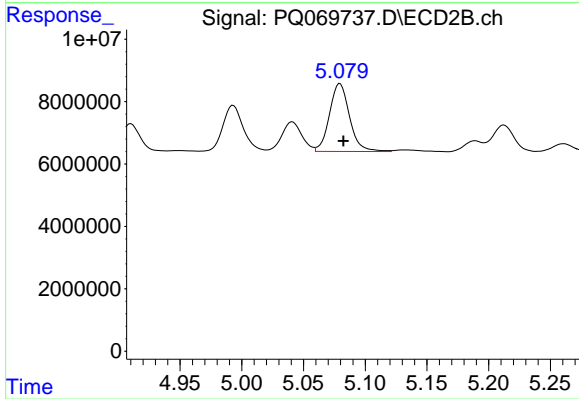
#27 AR-1254-2

R.T.: 4.698 min
 Delta R.T.: -0.003 min
 Response: 17696645
 Conc: 54.15 ng/ml



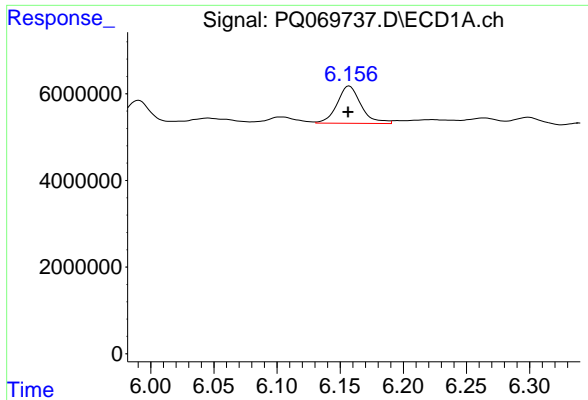
#28 AR-1254-3

R.T.: 5.876 min
 Delta R.T.: 0.000 min
 Response: 14050410
 Conc: 49.87 ng/ml



#28 AR-1254-3

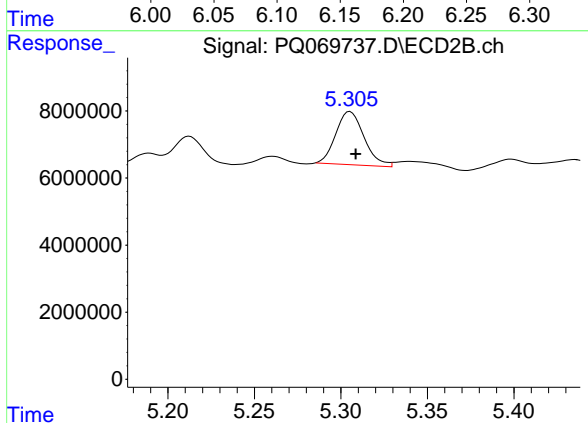
R.T.: 5.080 min
 Delta R.T.: -0.003 min
 Response: 24733694
 Conc: 47.22 ng/ml



#29 AR-1254-4

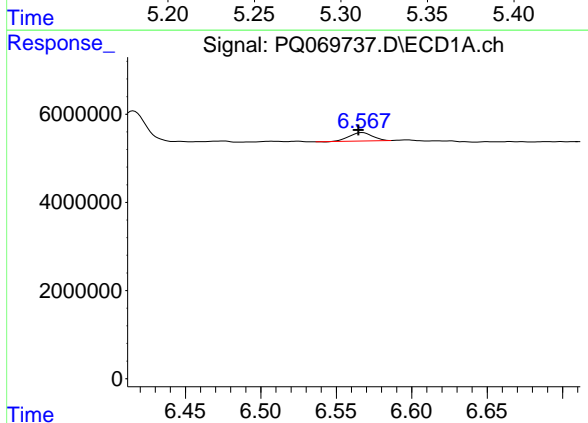
R.T.: 6.157 min
 Delta R.T.: 0.001 min
 Response: 11336730
 Conc: 57.21 ng/ml

Instrument :
 ECD_Q
 ClientSampleId :
 AR12423121



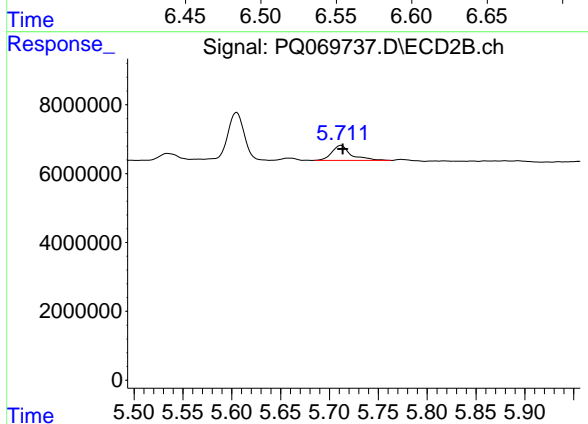
#29 AR-1254-4

R.T.: 5.305 min
 Delta R.T.: -0.003 min
 Response: 17970345
 Conc: 56.50 ng/ml



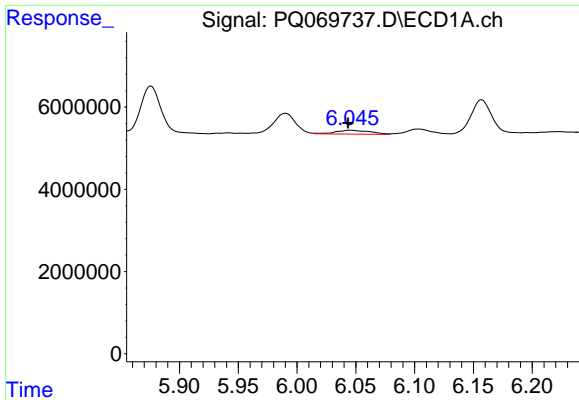
#30 AR-1254-5

R.T.: 6.567 min
 Delta R.T.: 0.003 min
 Response: 2051436
 Conc: 9.26 ng/ml



#30 AR-1254-5

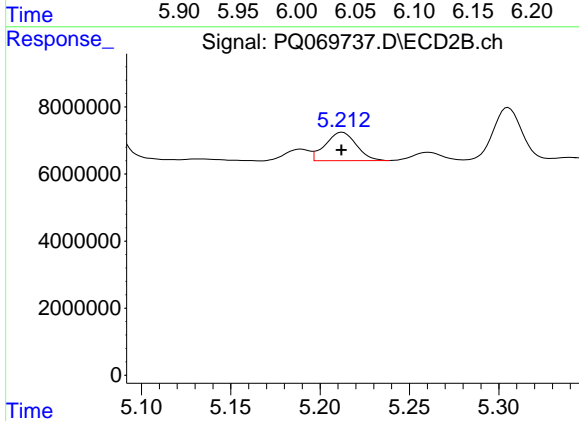
R.T.: 5.712 min
 Delta R.T.: -0.002 min
 Response: 5976153
 Conc: 12.73 ng/ml



#31 AR-1260-1

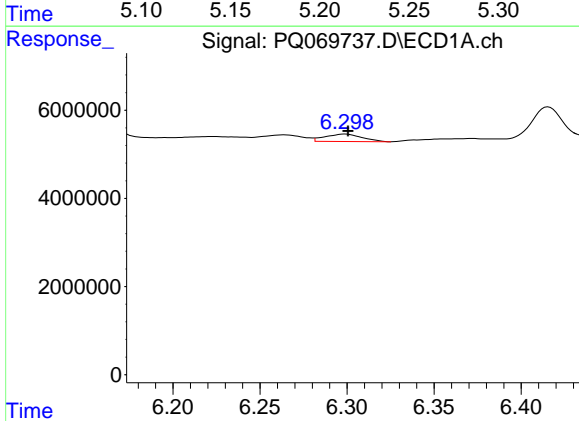
R.T.: 6.045 min
 Delta R.T.: 0.002 min
 Response: 1967545
 Conc: 9.38 ng/ml

Instrument :
 ECD_Q
 ClientSampleId :
 AR12423121



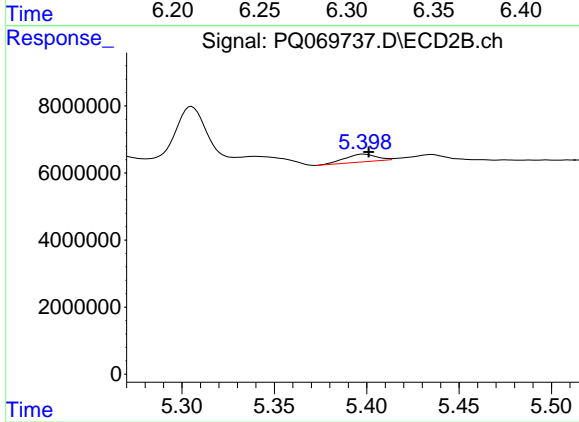
#31 AR-1260-1

R.T.: 5.212 min
 Delta R.T.: 0.000 min
 Response: 10226948
 Conc: 28.64 ng/ml



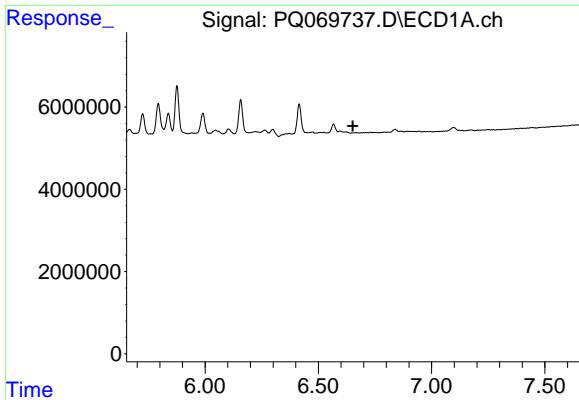
#32 AR-1260-2

R.T.: 6.299 min
 Delta R.T.: -0.002 min
 Response: 2494834
 Conc: 10.11 ng/ml



#32 AR-1260-2

R.T.: 5.398 min
 Delta R.T.: -0.003 min
 Response: 2752524
 Conc: 6.47 ng/ml

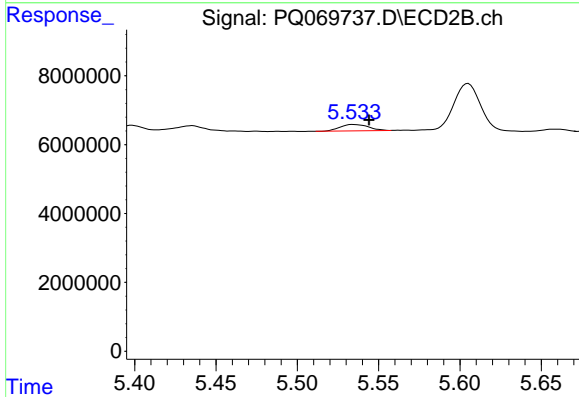


#33 AR-1260-3

R.T.: 0.000 min
 Exp R.T.: 6.652 min
 Response: 0
 Conc: N.D.

Instrument : ECD_Q
 ClientSampleId : AR12423121

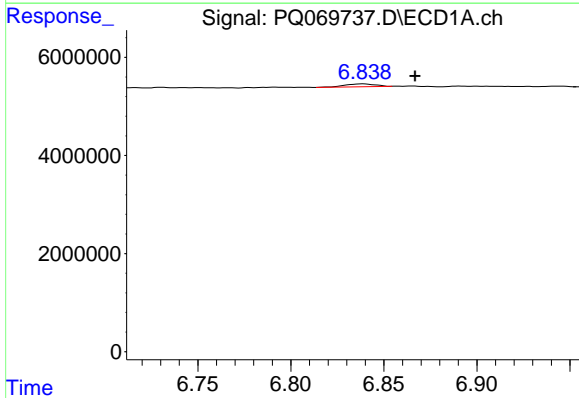
Time



#33 AR-1260-3

R.T.: 5.534 min
 Delta R.T.: -0.010 min
 Response: 2261889
 Conc: 5.56 ng/ml

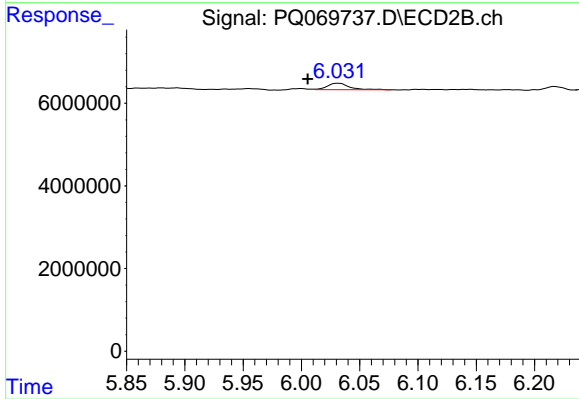
Time



#34 AR-1260-4

R.T.: 6.839 min
 Delta R.T.: -0.028 min
 Response: 671745
 Conc: 3.34 ng/ml

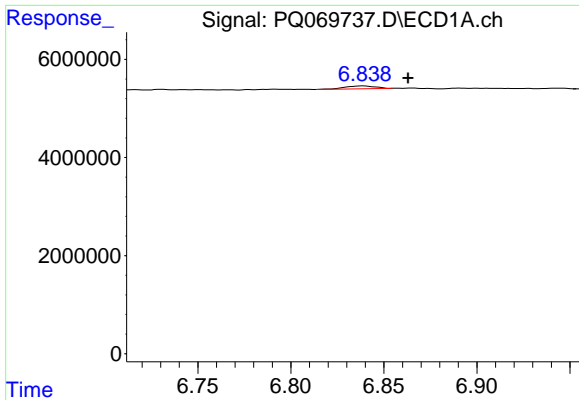
Time



#34 AR-1260-4

R.T.: 6.032 min
 Delta R.T.: 0.026 min
 Response: 2020556
 Conc: 5.65 ng/ml

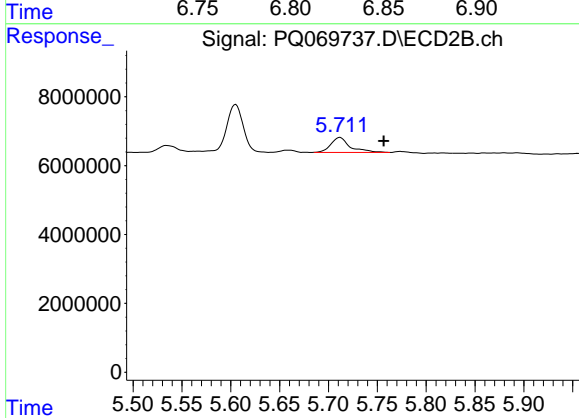
Time



#36 AR-1262-1

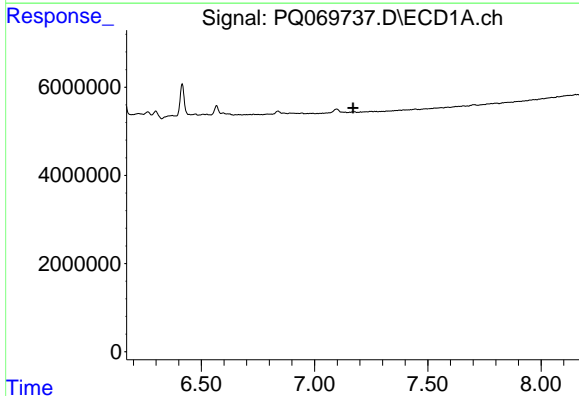
R.T.: 6.839 min
 Delta R.T.: -0.024 min
 Response: 671745
 Conc: 2.66 ng/ml

Instrument :
 ECD_Q
 ClientSampleId :
 AR12423121



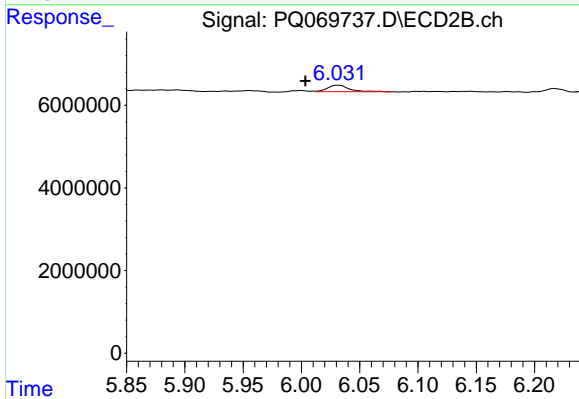
#36 AR-1262-1

R.T.: 5.712 min
 Delta R.T.: -0.045 min
 Response: 5976153
 Conc: 12.16 ng/ml



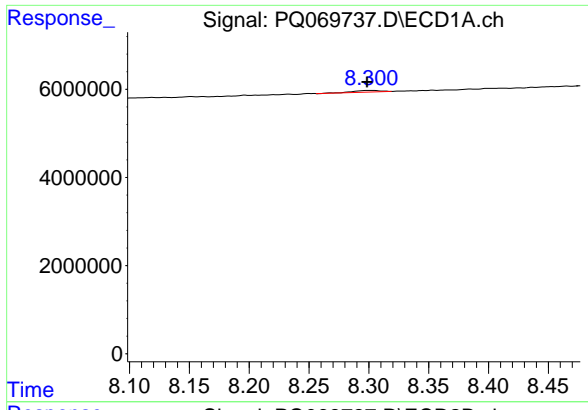
#37 AR-1262-2

R.T.: 0.000 min
 Exp R.T. : 7.170 min
 Response: 0
 Conc: N.D.



#37 AR-1262-2

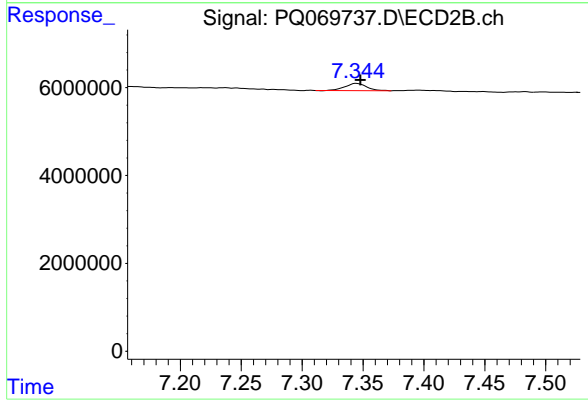
R.T.: 6.032 min
 Delta R.T.: 0.028 min
 Response: 2020556
 Conc: 4.43 ng/ml



#45 AR-1268-5

R.T.: 8.301 min
 Delta R.T.: 0.003 min
 Response: 575439
 Conc: 0.49 ng/ml

Instrument :
 ECD_Q
 ClientSampleId :
 AR12423121



#45 AR-1268-5

R.T.: 7.345 min
 Delta R.T.: -0.003 min
 Response: 2005371
 Conc: 0.85 ng/ml