

Data Path : Z:\pestpcbsrv\HPCHEM1\ECD\_Q\Data\PQ122118\  
 Data File : PQ035907.D  
 Signal(s) : Signal #1: ECD1A.ch Signal #2: ECD2B.ch  
 Acq On : 21 Dec 2018 14:57  
 Operator : SM\SJ  
 Sample : J6389-08  
 Misc :  
 ALS Vial : 23 Sample Multiplier: 1

**Instrument :**  
 ECD\_Q  
**ClientSampleId :**  
 P001-SS013-1824-01

**Manual Integrations**  
**APPROVED**

Sohil  
 12/26/2018 4:16:41 PM

Integration File signal 1: autoint1.e  
 Integration File signal 2: autoint2.e  
 Quant Time: Dec 21 23:48:00 2018  
 Quant Method : Z:\pestpcbsrv\HPCHEM1\ECD\_Q\Method\PQ121318.M  
 Quant Title : GC EXTRACTABLES  
 QLast Update : Fri Dec 21 15:11:04 2018  
 Response via : Initial Calibration  
 Integrator: ChemStation

Volume Inj. : 2 µl  
 Signal #1 Phase : ZB-MR1 Signal #2 Phase: ZB-MR2  
 Signal #1 Info : 30Mx0.32mmx 0.50µ Signal #2 Info : 30M x 0.32mm x 0.25µm

Compound	RT#1	RT#2	Resp#1	Resp#2	ng/ml	ng/ml
-----						
System Monitoring Compounds						
1) SA Tetrachlo...	4.408	3.742	509.1E6	289.1E6	130.114m	129.387m
2) SA Decachlor...	10.124	8.727	582.2E6	261.3E6	197.513m	147.866 #
Target Compounds						
31) L7 AR-1260-1	7.195	6.300	49076.2E6	35514.8E6	266137.067	282340.178
32) L7 AR-1260-2	7.451	6.488	47877.3E6	33615.1E6	220344.142	222596.909
33) L7 AR-1260-3	7.805	6.638	45328.6E6	35459.3E6	338368.948	253762.115 #
34) L7 AR-1260-4	8.035	7.106	51773.4E6	31116.0E6	314138.816	335100.876
35) L7 AR-1260-5	8.361	7.358	59414.1E6	48402.6E6	199264.379	215700.436
-----						

(f)=RT Delta > 1/2 Window (#)=Amounts differ by > 25% (m)=manual int.

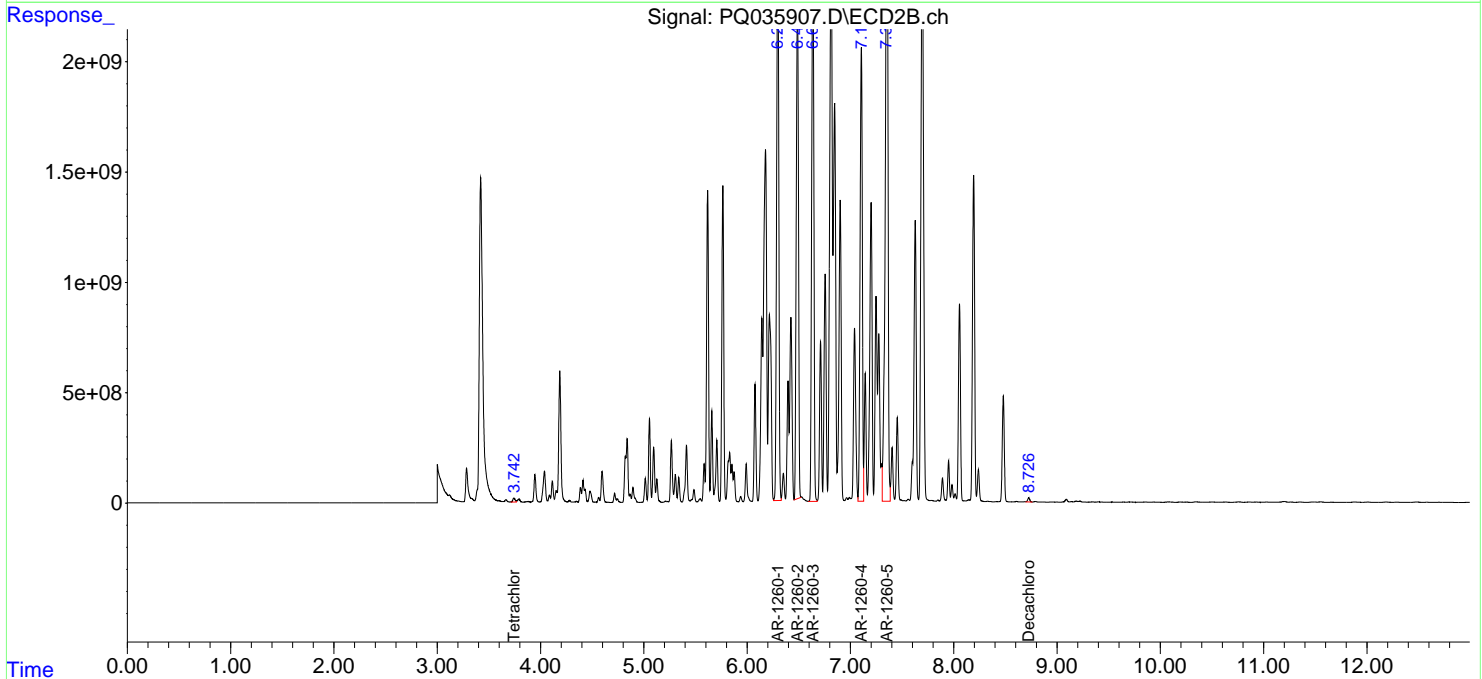
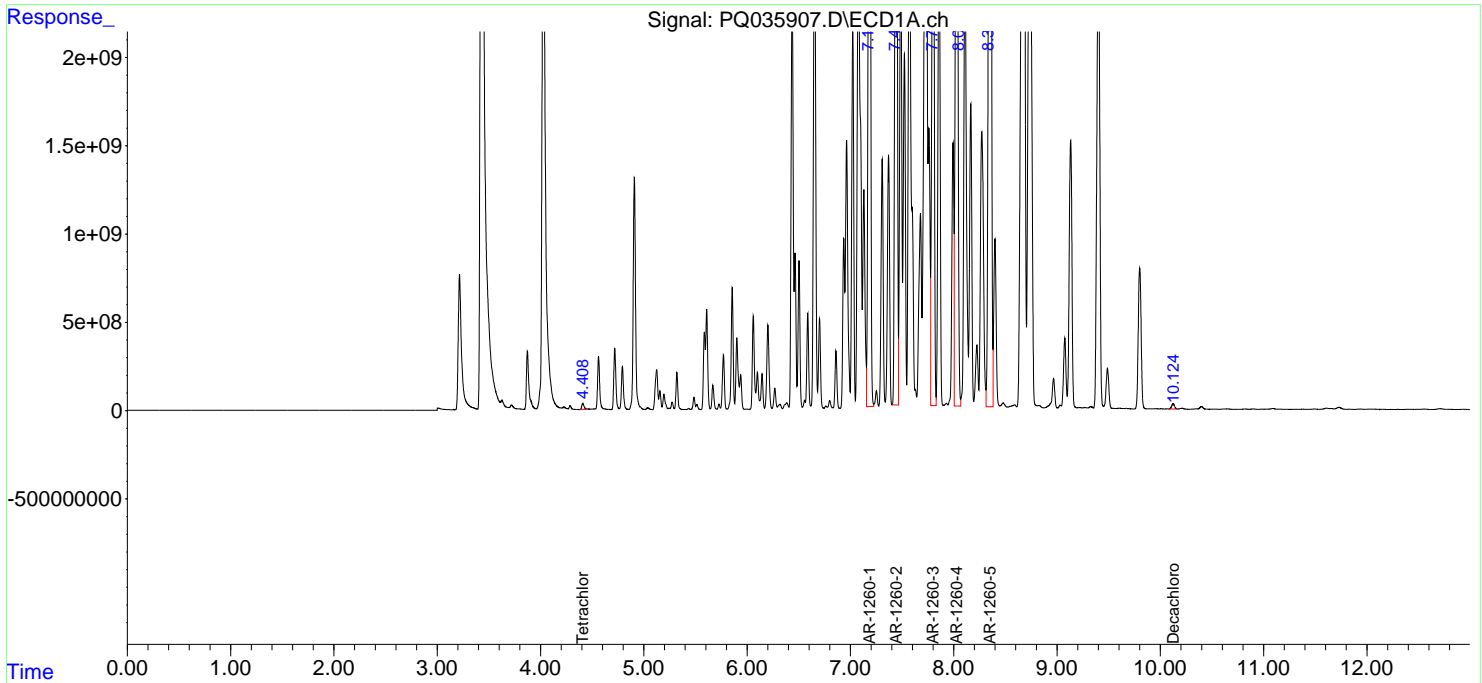
Data Path : Z:\pestpcbsrv\HPCHEM1\ECD\_Q\Data\PQ122118\  
 Data File : PQ035907.D  
 Signal(s) : Signal #1: ECD1A.ch Signal #2: ECD2B.ch  
 Acq On : 21 Dec 2018 14:57  
 Operator : SM\SJ  
 Sample : J6389-08  
 Misc :  
 ALS Vial : 23 Sample Multiplier: 1

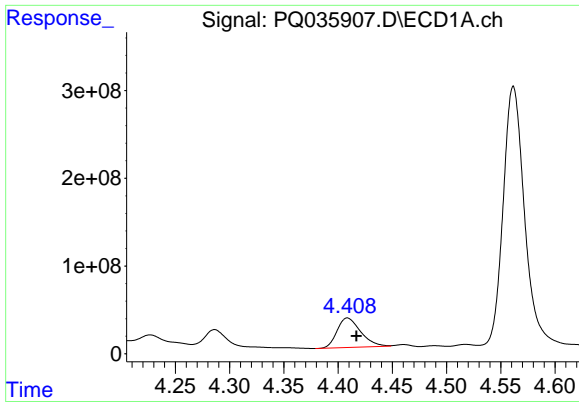
**Instrument :**  
 ECD\_Q  
**Client Sampled :**  
 P001-SS013-1824-01

**Manual Integrations**  
**APPROVED**  
 Sohil  
 12/26/2018 4:16:41 PM

Integration File signal 1: autoint1.e  
 Integration File signal 2: autoint2.e  
 Quant Time: Dec 21 23:48:00 2018  
 Quant Method : Z:\pestpcbsrv\HPCHEM1\ECD\_Q\Method\PQ121318.M  
 Quant Title : GC EXTRACTABLES  
 QLast Update : Fri Dec 21 15:11:04 2018  
 Response via : Initial Calibration  
 Integrator: ChemStation

Volume Inj. : 2 µl  
 Signal #1 Phase : ZB-MR1 Signal #2 Phase: ZB-MR2  
 Signal #1 Info : 30Mx0.32mmx 0.50µ Signal #2 Info : 30M x 0.32mm x 0.25µm

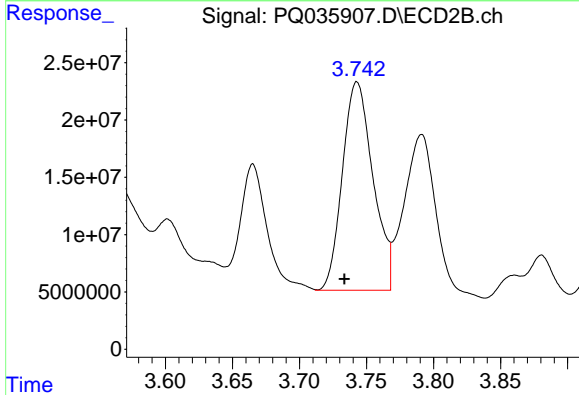




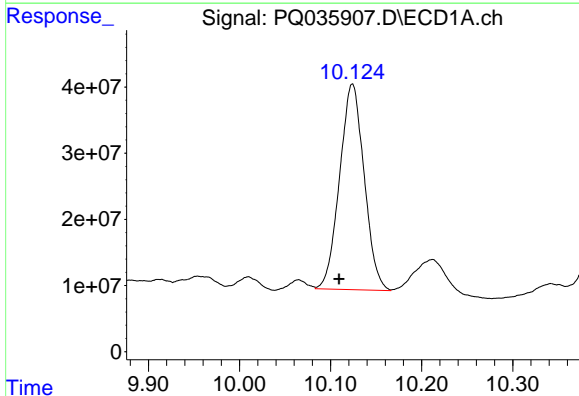
#1 Tetrachloro-m-xylene  
 R.T.: 4.408 min  
 Delta R.T.: -0.009 min  
 Response: 509088005  
 Conc: 130.11 ng/ml m

Instrument :  
 ECD\_Q  
 ClientSampled :  
 P001-SS013-1824-01

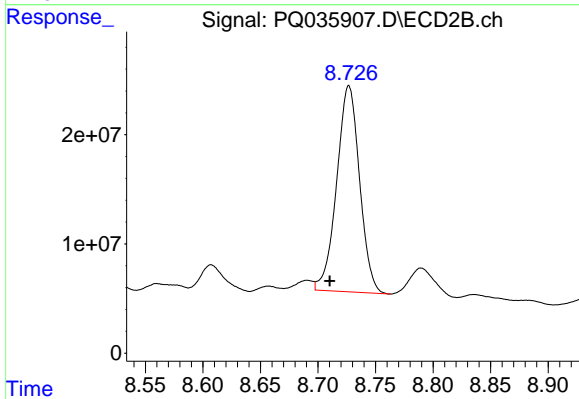
Manual Integrations  
 APPROVED  
 Sohil  
 12/26/2018 4:16:41 PM



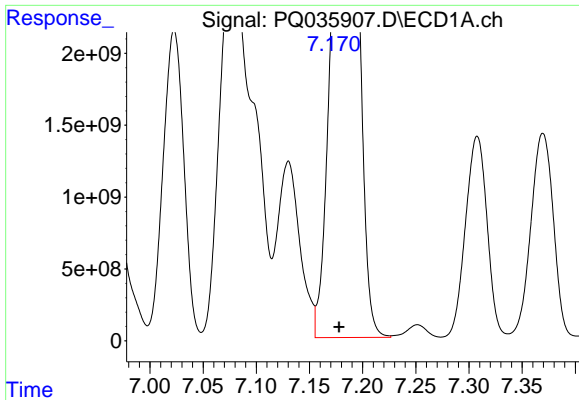
#1 Tetrachloro-m-xylene  
 R.T.: 3.742 min  
 Delta R.T.: 0.009 min  
 Response: 289102993  
 Conc: 129.39 ng/ml m



#2 Decachlorobiphenyl  
 R.T.: 10.124 min  
 Delta R.T.: 0.015 min  
 Response: 582185187  
 Conc: 197.51 ng/ml m



#2 Decachlorobiphenyl  
 R.T.: 8.727 min  
 Delta R.T.: 0.017 min  
 Response: 261347384  
 Conc: 147.87 ng/ml

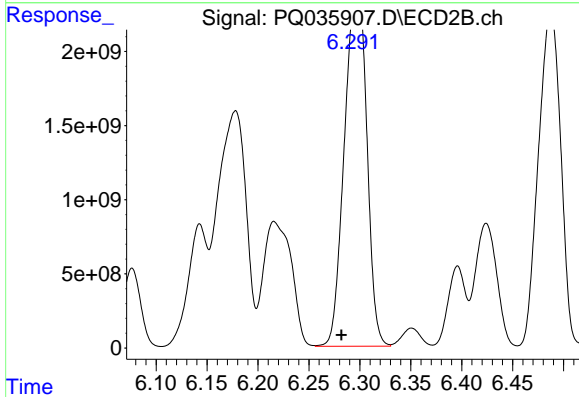


#31 AR-1260-1

R.T.: 7.195 min  
 Delta R.T.: 0.017 min  
 Response: 49076210790  
 Conc: 266137.07 ng/ml

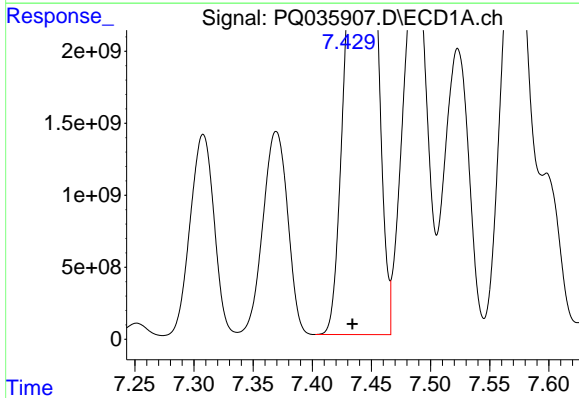
**Instrument :**  
 ECD\_Q  
**ClientSampled :**  
 P001-SS013-1824-01

**Manual Integrations**  
**APPROVED**  
 Sohil  
 12/26/2018 4:16:41 PM



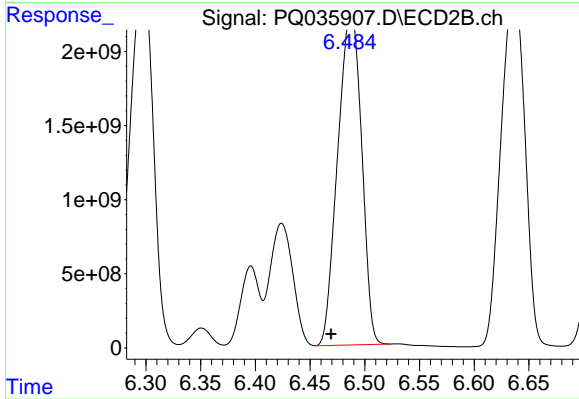
#31 AR-1260-1

R.T.: 6.300 min  
 Delta R.T.: 0.018 min  
 Response: 35514823037  
 Conc: 282340.18 ng/ml



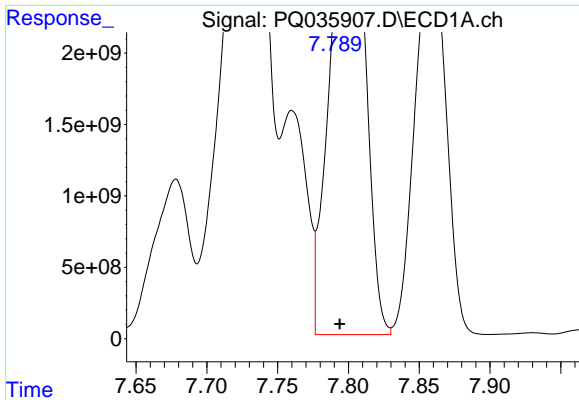
#32 AR-1260-2

R.T.: 7.451 min  
 Delta R.T.: 0.017 min  
 Response: 47877262376  
 Conc: 220344.14 ng/ml



#32 AR-1260-2

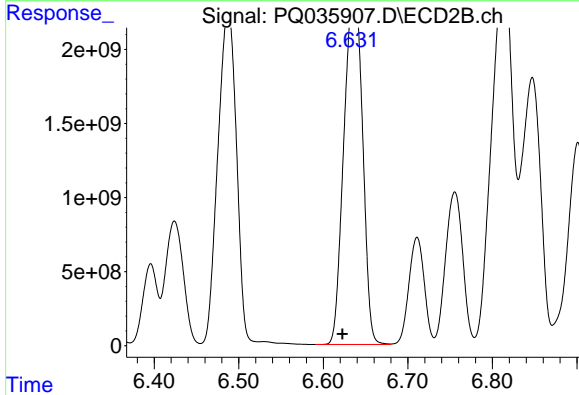
R.T.: 6.488 min  
 Delta R.T.: 0.019 min  
 Response: 33615051514  
 Conc: 222596.91 ng/ml



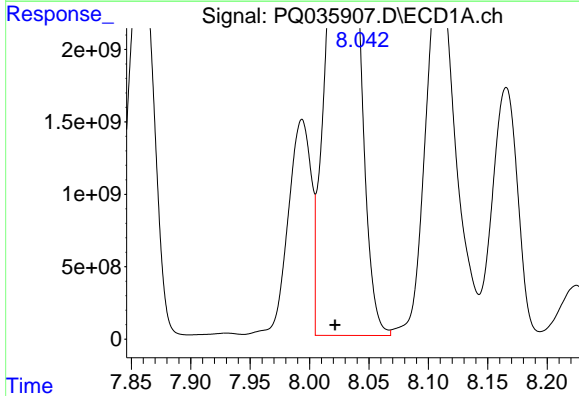
#33 AR-1260-3  
 R.T.: 7.805 min  
 Delta R.T.: 0.011 min  
 Response: 45328620206  
 Conc: 338368.95 ng/ml

**Instrument :**  
 ECD\_Q  
**ClientSampled :**  
 P001-SS013-1824-01

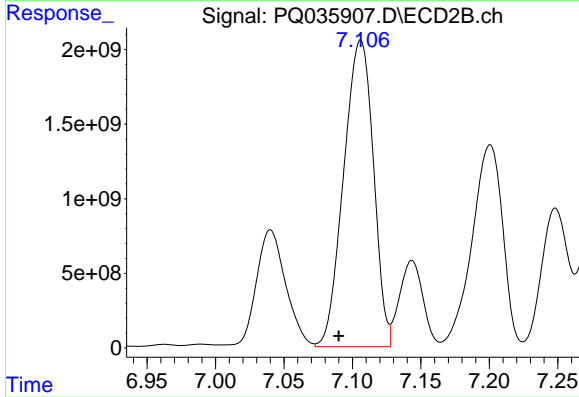
**Manual Integrations**  
**APPROVED**  
 Sohil  
 12/26/2018 4:16:41 PM



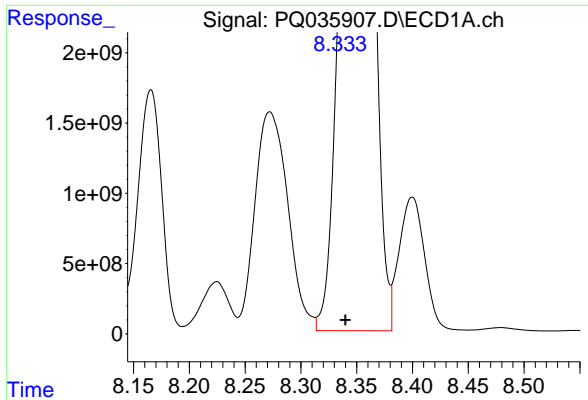
#33 AR-1260-3  
 R.T.: 6.638 min  
 Delta R.T.: 0.015 min  
 Response: 35459330178  
 Conc: 253762.12 ng/ml



#34 AR-1260-4  
 R.T.: 8.035 min  
 Delta R.T.: 0.013 min  
 Response: 51773430350  
 Conc: 314138.82 ng/ml



#34 AR-1260-4  
 R.T.: 7.106 min  
 Delta R.T.: 0.016 min  
 Response: 31116041807  
 Conc: 335100.88 ng/ml

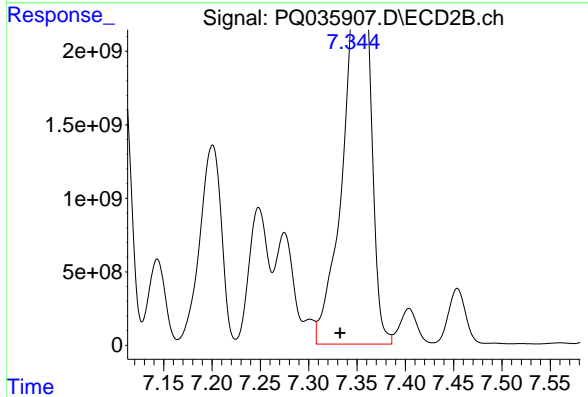


#35 AR-1260-5

R.T.: 8.361 min  
 Delta R.T.: 0.021 min  
 Response: 59414068681  
 Conc: 199264.38 ng/ml

**Instrument :**  
 ECD\_Q  
**ClientSampled :**  
 P001-SS013-1824-01

**Manual Integrations**  
**APPROVED**  
 Sohil  
 12/26/2018 4:16:41 PM



#35 AR-1260-5

R.T.: 7.358 min  
 Delta R.T.: 0.025 min  
 Response: 48402640207  
 Conc: 215700.44 ng/ml