

Data Path : Z:\pestpcbsrv\HPCHEM1\ECD\_Q\Data\PQ122421\  
 Data File : PQ055380.D  
 Signal(s) : Signal #1: ECD1A.ch Signal #2: ECD2B.ch  
 Acq On : 24 Dec 2021 21:23  
 Operator : AJ\MA  
 Sample : AR1254CCC500  
 Misc :  
 ALS Vial : 4 Sample Multiplier: 1

Instrument :  
 ECD\_Q  
 ClientSampleId :  
 AR1254CCC500

Integration File signal 1: autoint1.e  
 Integration File signal 2: autoint2.e  
 Quant Time: Dec 24 23:41:44 2021  
 Quant Method : Z:\pestpcbsrv\HPCHEM1\ECD\_Q\Method\PQ122321.M  
 Quant Title : GC EXTRACTABLES  
 QLast Update : Fri Dec 24 22:33:02 2021  
 Response via : Initial Calibration  
 Integrator: ChemStation

Volume Inj. : 2 µl  
 Signal #1 Phase : ZB-MR2 Signal #2 Phase: ZB-MR2  
 Signal #1 Info : 30Mx0.32mmx 0.50µ Signal #2 Info : 30M x 0.32mm x 0.25µm

Compound	RT#1	RT#2	Resp#1	Resp#2	ng/ml	ng/ml
-----						
System Monitoring Compounds						
1) SA Tetrachlo...	5.244	4.316	606.9E6	502.1E6	53.929	56.083
2) SA Decachlor...	11.434	9.706	790.7E6	403.2E6	55.679	52.194
Target Compounds						
26) L6 AR-1254-1	7.479	6.462	180.0E6	268.7E6	484.297	495.577
27) L6 AR-1254-2	7.708	6.621	279.8E6	230.5E6	481.635	493.294
28) L6 AR-1254-3	8.092	7.044	341.8E6	371.6E6	485.302	488.539
29) L6 AR-1254-4	8.387	7.282	261.7E6	224.8E6	494.841	483.226
30) L6 AR-1254-5	8.818	7.714	279.1E6	305.4E6	490.915	474.297
-----						

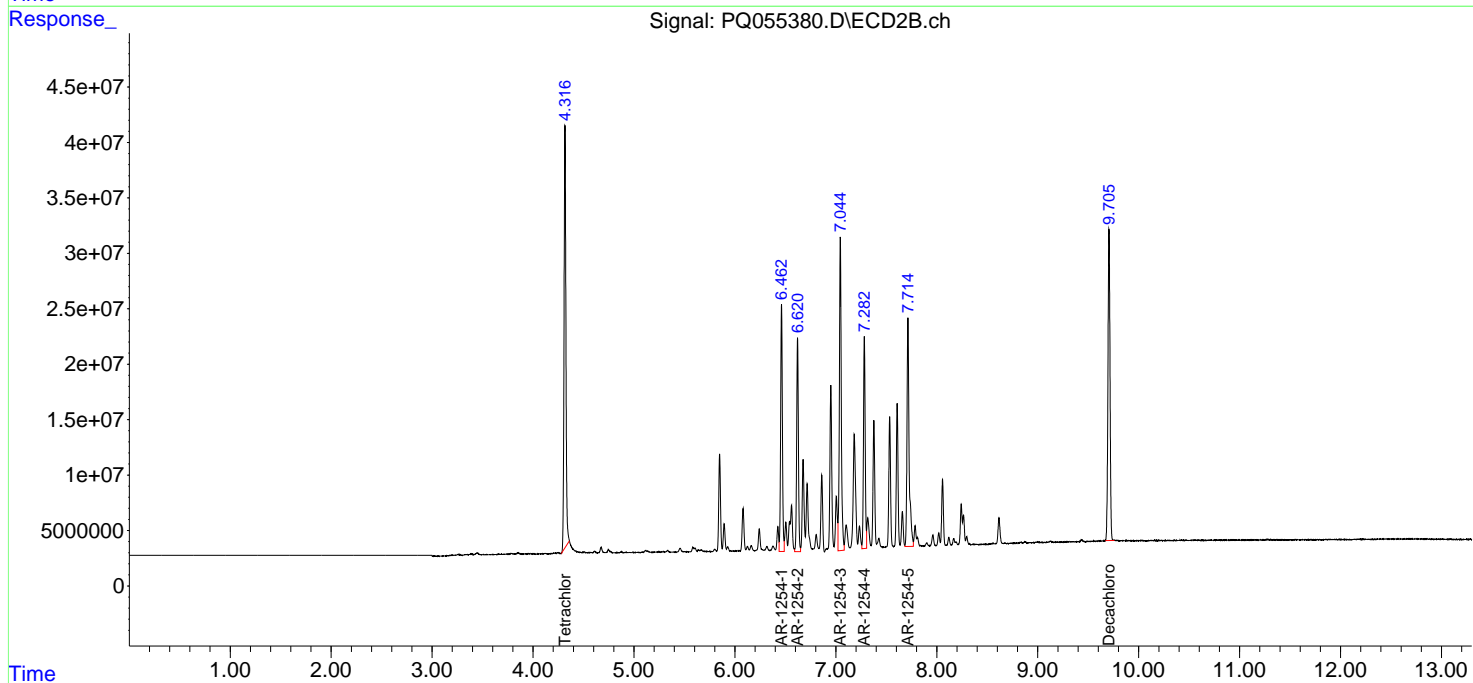
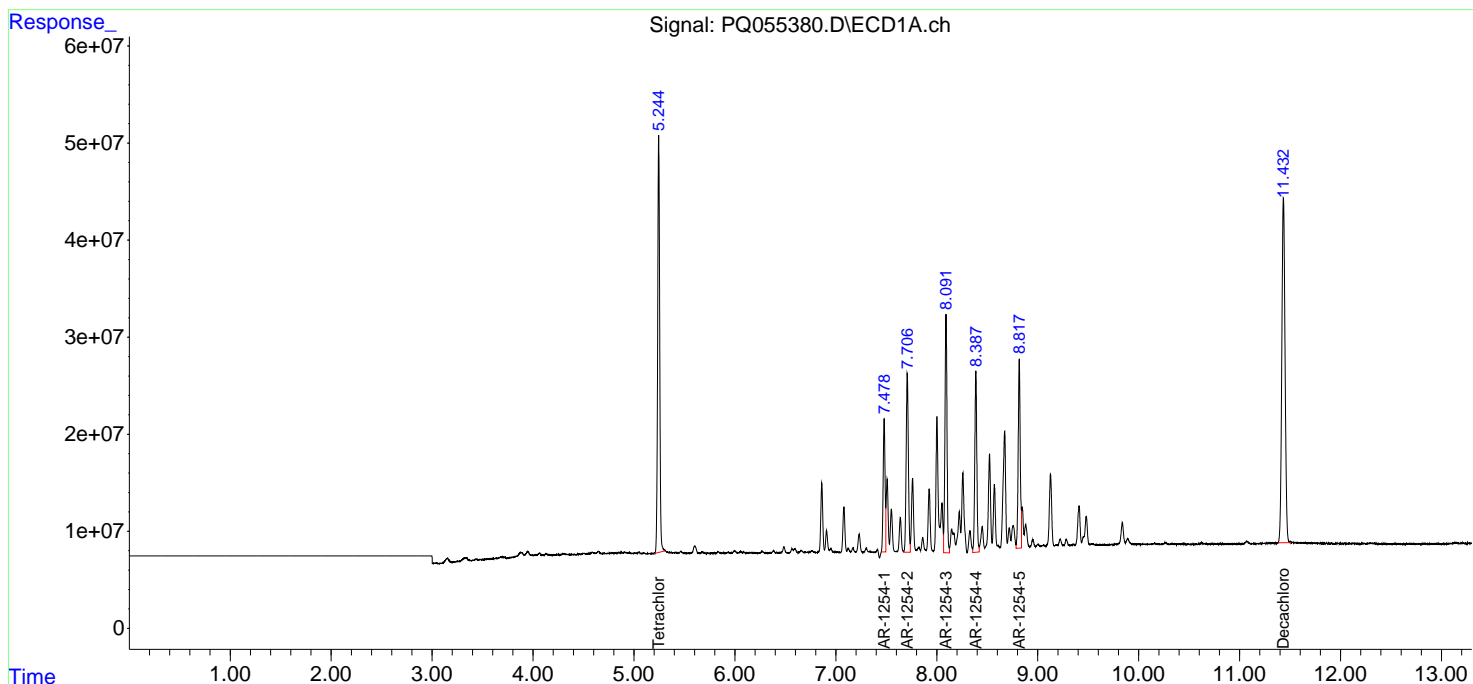
(f)=RT Delta > 1/2 Window (#)=Amounts differ by > 25% (m)=manual int.

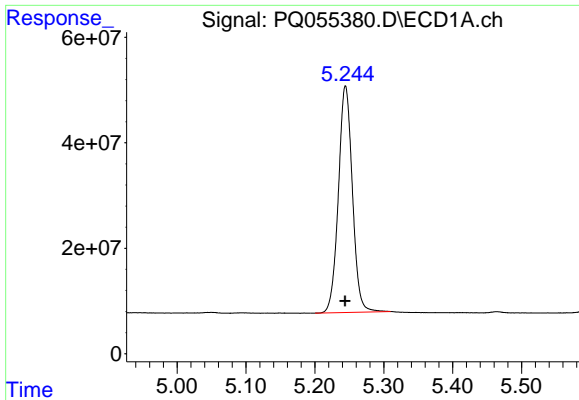
Data Path : Z:\pestpcbsrv\HPCHEM1\ECD\_Q\Data\PQ122421\  
 Data File : PQ055380.D  
 Signal(s) : Signal #1: ECD1A.ch Signal #2: ECD2B.ch  
 Acq On : 24 Dec 2021 21:23  
 Operator : AJ\MA  
 Sample : AR1254CCC500  
 Misc :  
 ALS Vial : 4 Sample Multiplier: 1

Instrument :  
 ECD\_Q  
 ClientSampleId :  
 AR1254CCC500

Integration File signal 1: autoint1.e  
 Integration File signal 2: autoint2.e  
 Quant Time: Dec 24 23:41:44 2021  
 Quant Method : Z:\pestpcbsrv\HPCHEM1\ECD\_Q\Method\PQ122321.M  
 Quant Title : GC EXTRACTABLES  
 QLast Update : Fri Dec 24 22:33:02 2021  
 Response via : Initial Calibration  
 Integrator: ChemStation

Volume Inj. : 2 µl  
 Signal #1 Phase : ZB-MR1 Signal #2 Phase: ZB-MR2  
 Signal #1 Info : 30Mx0.32mmx 0.50µ Signal #2 Info : 30M x 0.32mm x 0.25µm

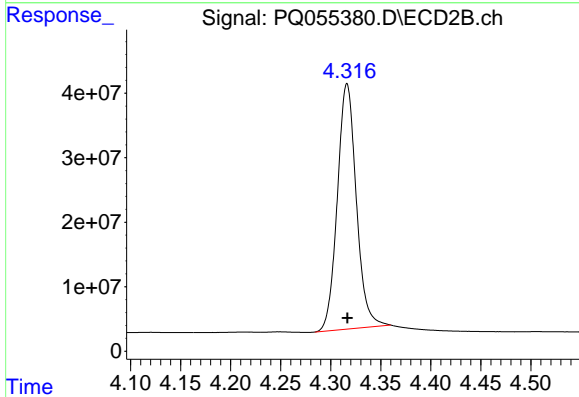




#1 Tetrachloro-m-xylene

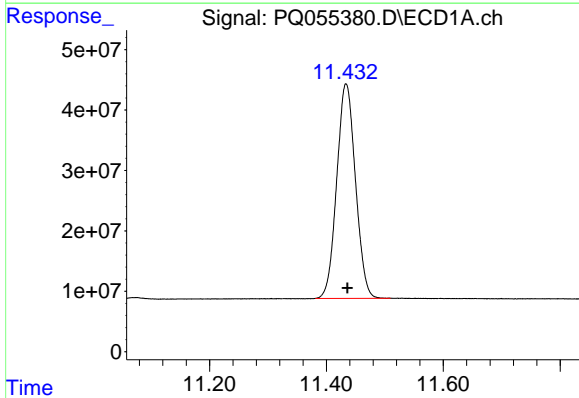
R.T.: 5.244 min  
 Delta R.T.: 0.000 min  
 Response: 606904800  
 Conc: 53.93 ng/ml

Instrument :  
 ECD\_Q  
 ClientSampleId :  
 AR1254CCC500



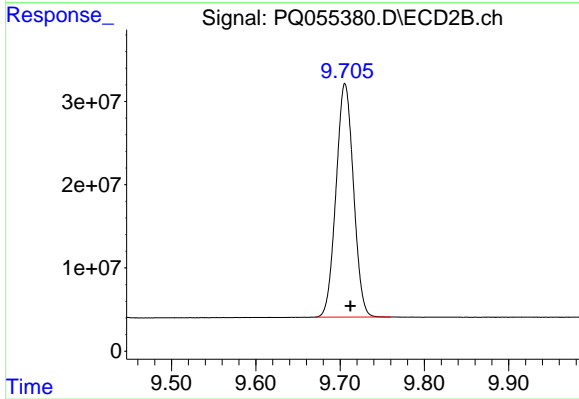
#1 Tetrachloro-m-xylene

R.T.: 4.316 min  
 Delta R.T.: 0.000 min  
 Response: 502107036  
 Conc: 56.08 ng/ml



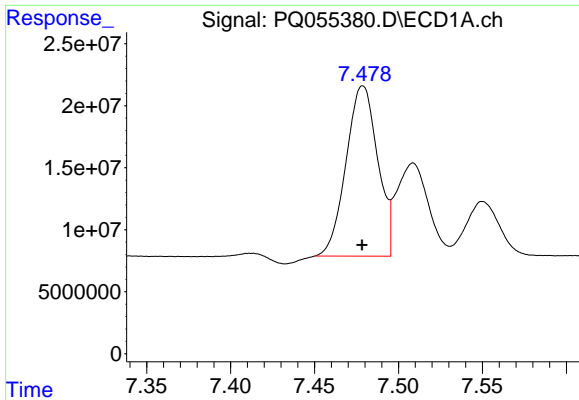
#2 Decachlorobiphenyl

R.T.: 11.434 min  
 Delta R.T.: -0.002 min  
 Response: 790748183  
 Conc: 55.68 ng/ml



#2 Decachlorobiphenyl

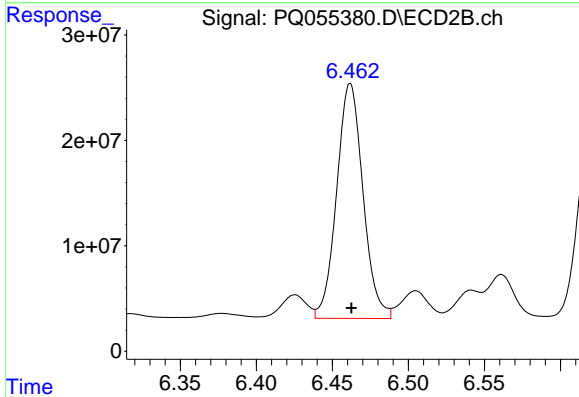
R.T.: 9.706 min  
 Delta R.T.: -0.006 min  
 Response: 403199852  
 Conc: 52.19 ng/ml



#26 AR-1254-1

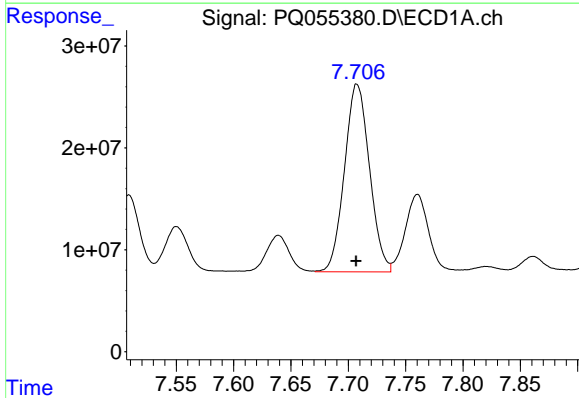
R.T.: 7.479 min  
 Delta R.T.: 0.000 min  
 Response: 179954860  
 Conc: 484.30 ng/ml

Instrument :  
 ECD\_Q  
 ClientSampleId :  
 AR1254CCC500



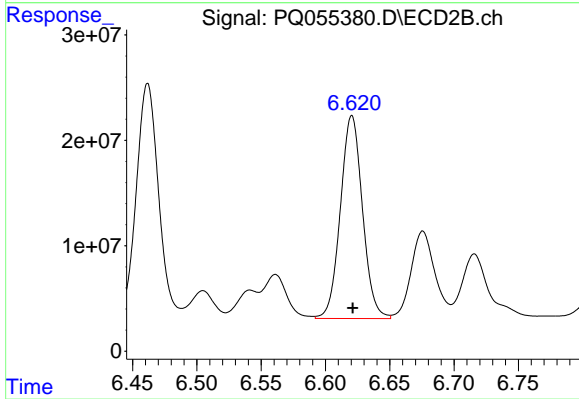
#26 AR-1254-1

R.T.: 6.462 min  
 Delta R.T.: 0.000 min  
 Response: 268663227  
 Conc: 495.58 ng/ml



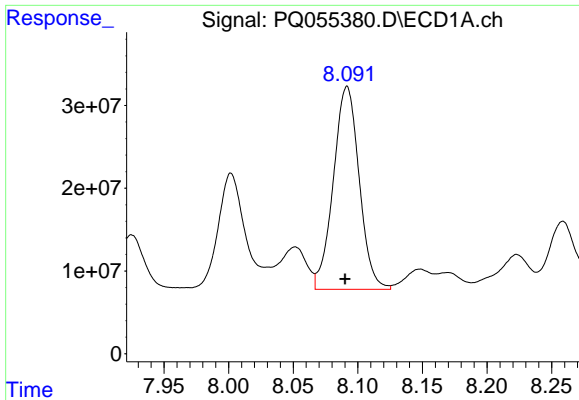
#27 AR-1254-2

R.T.: 7.708 min  
 Delta R.T.: 0.000 min  
 Response: 279832380  
 Conc: 481.64 ng/ml



#27 AR-1254-2

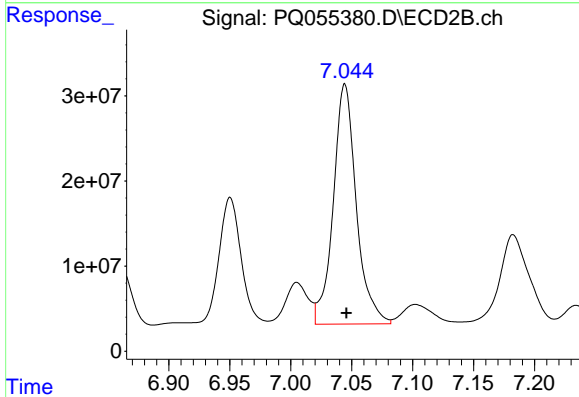
R.T.: 6.621 min  
 Delta R.T.: 0.000 min  
 Response: 230542889  
 Conc: 493.29 ng/ml



#28 AR-1254-3

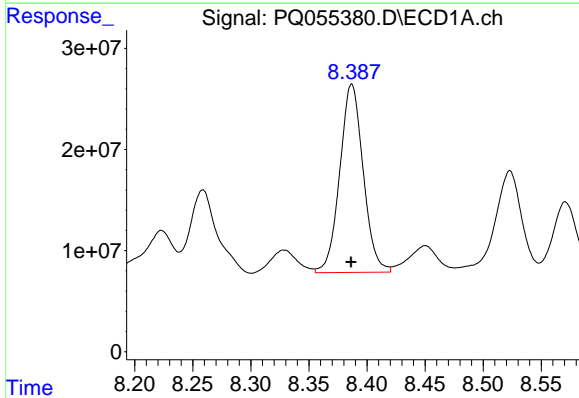
R.T.: 8.092 min  
 Delta R.T.: 0.001 min  
 Response: 341828725  
 Conc: 485.30 ng/ml

Instrument :  
 ECD\_Q  
 ClientSampleId :  
 AR1254CCC500



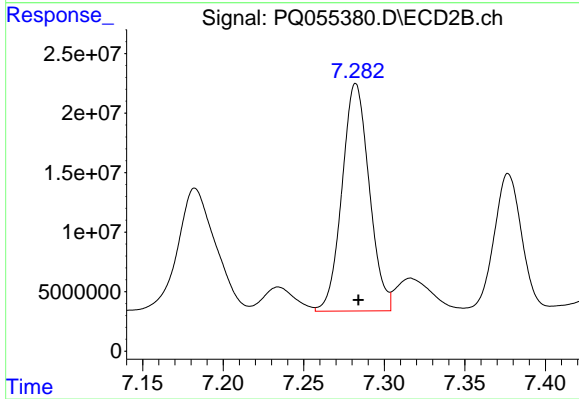
#28 AR-1254-3

R.T.: 7.044 min  
 Delta R.T.: -0.001 min  
 Response: 371622473  
 Conc: 488.54 ng/ml



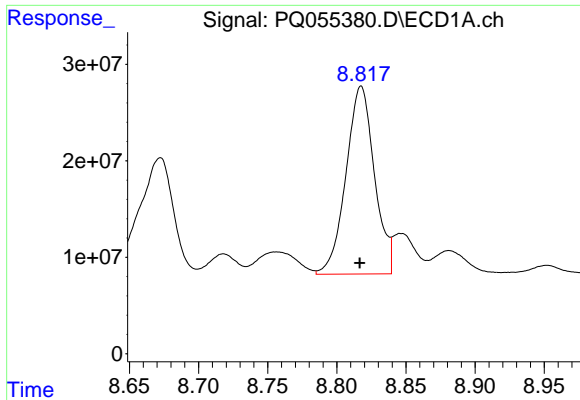
#29 AR-1254-4

R.T.: 8.387 min  
 Delta R.T.: 0.000 min  
 Response: 261662719  
 Conc: 494.84 ng/ml



#29 AR-1254-4

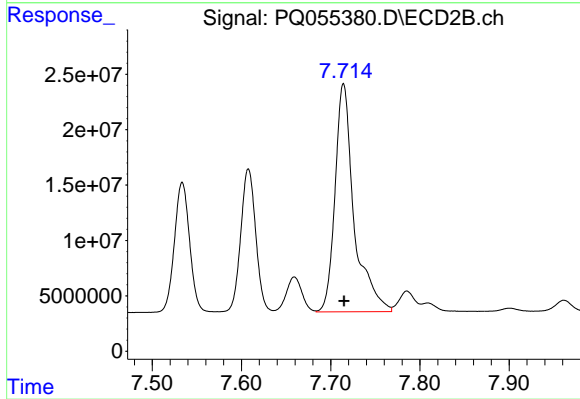
R.T.: 7.282 min  
 Delta R.T.: -0.002 min  
 Response: 224776713  
 Conc: 483.23 ng/ml



#30 AR-1254-5

R.T.: 8.818 min  
Delta R.T.: 0.000 min  
Response: 279109932  
Conc: 490.91 ng/ml

Instrument :  
ECD\_Q  
ClientSampleId :  
AR1254CCC500



#30 AR-1254-5

R.T.: 7.714 min  
Delta R.T.: 0.000 min  
Response: 305391356  
Conc: 474.30 ng/ml