

Data Path : Z:\pestpcbsrv\HPCHEM1\ECD_Q\Data\PQ122623\
 Data File : PQ064799.D
 Signal(s) : Signal #1: ECD1A.ch Signal #2: ECD2B.ch
 Acq On : 26 Dec 2023 13:27
 Operator : YP\AJ
 Sample : 05899-07
 Misc :
 ALS Vial : 20 Sample Multiplier: 1

Instrument :
 ECD_Q
 ClientSampleId :
 GHL-SS-14-0-2

Integration File signal 1: autoint1.e
 Integration File signal 2: autoint2.e
 Quant Time: Dec 27 04:41:36 2023
 Quant Method : Z:\pestpcbsrv\HPCHEM1\ECD_Q\Method\PQ122123.M
 Quant Title : GC EXTRACTABLES
 QLast Update : Fri Dec 22 03:53:30 2023
 Response via : Initial Calibration
 Integrator: ChemStation

Volume Inj. : 2 µl
 Signal #1 Phase : ZB-MR1 Signal #2 Phase: ZB-MR2
 Signal #1 Info : 30Mx0.32mmx 0.50µ Signal #2 Info : 30M x 0.32mm x 0.25µm

Compound	RT#1	RT#2	Resp#1	Resp#2	ng/ml	ng/ml

System Monitoring Compounds						
1) SA Tetrachlo...	3.457	2.773	88989021	111.7E6	20.863	21.632
2) SA Decachlor...	8.690	7.566	65912132	84638965	18.916	17.408

Target Compounds

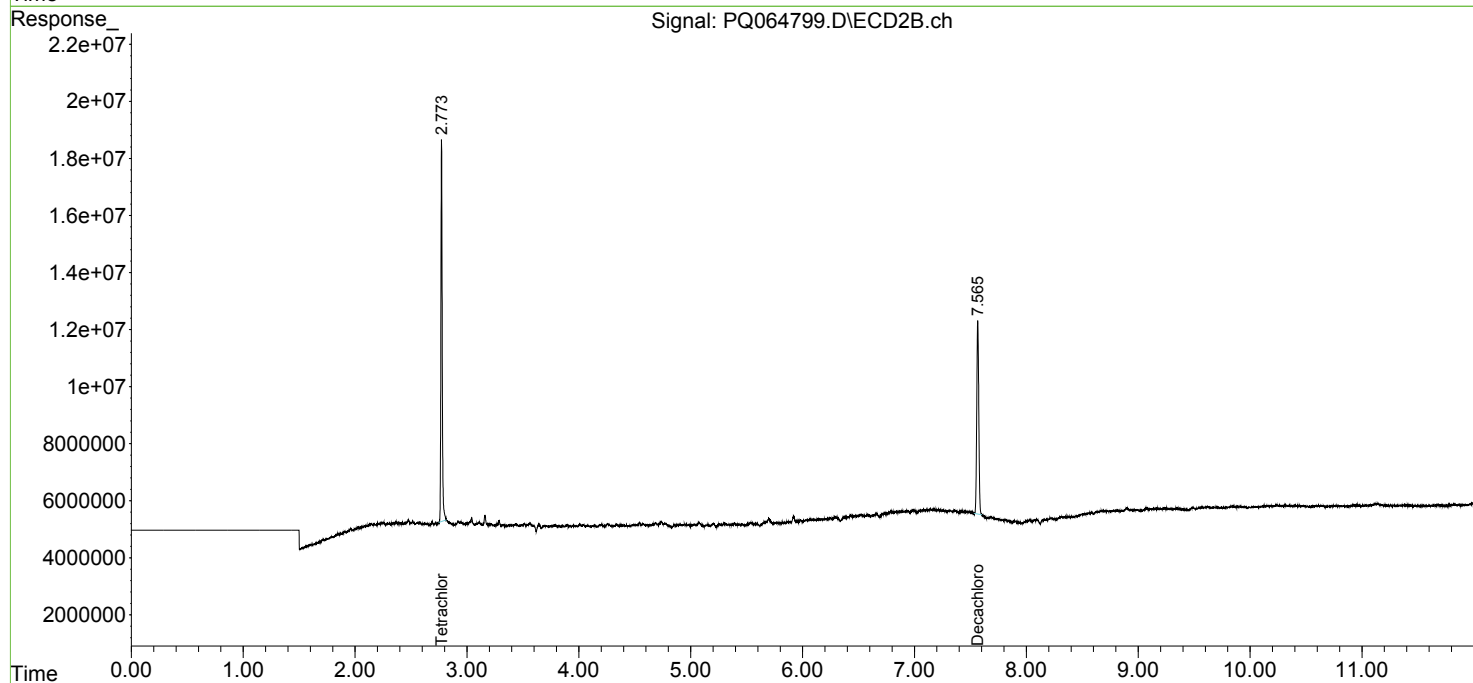
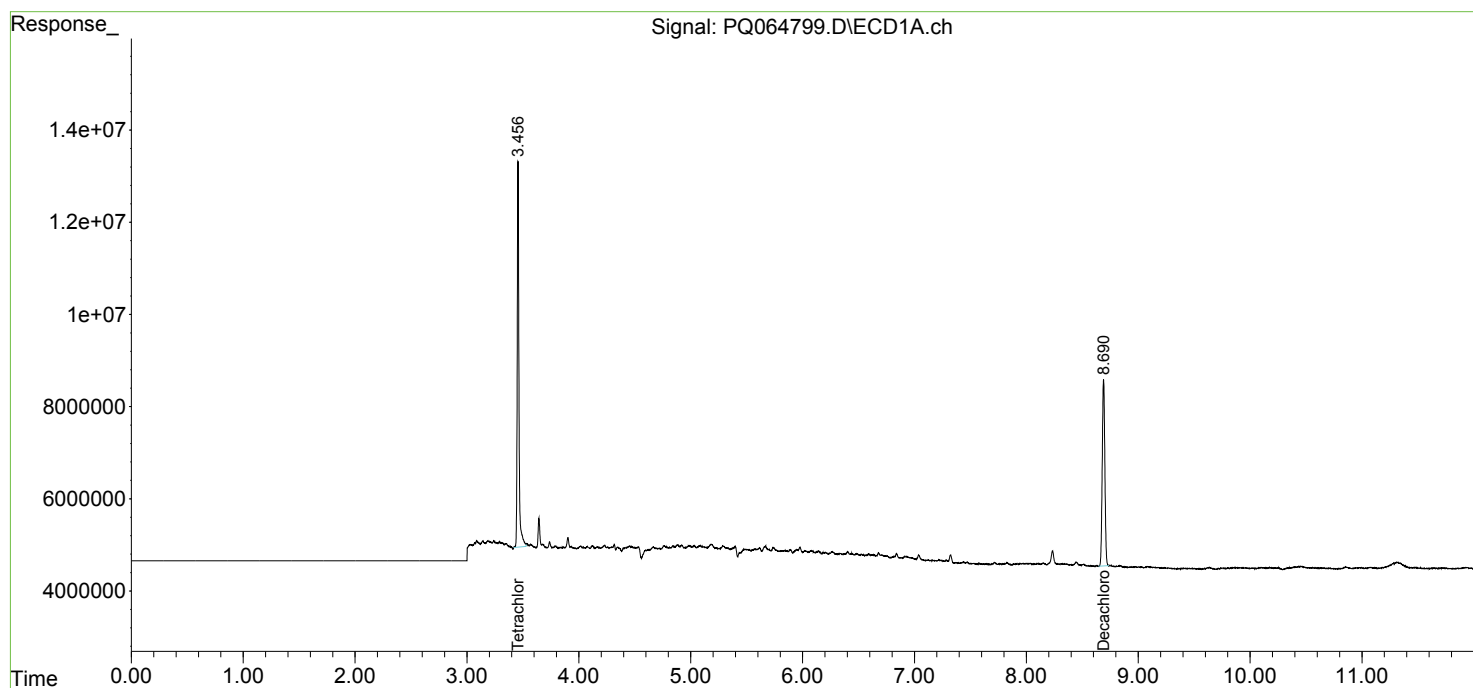
 (f)=RT Delta > 1/2 Window (#)=Amounts differ by > 25% (m)=manual int.

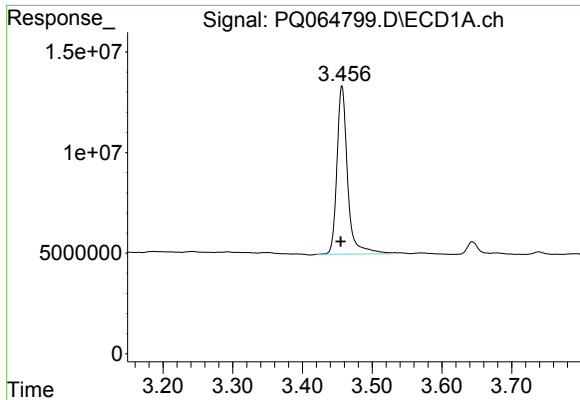
Data Path : Z:\pestpcbsrv\HPCHEM1\ECD_Q\Data\PQ122623\
Data File : PQ064799.D
Signal(s) : Signal #1: ECD1A.ch Signal #2: ECD2B.ch
Acq On : 26 Dec 2023 13:27
Operator : YP\AJ
Sample : 05899-07
Misc :
ALS Vial : 20 Sample Multiplier: 1

Instrument :
ECD_Q
ClientSampleId :
GHL-SS-14-0-2

Integration File signal 1: autoint1.e
Integration File signal 2: autoint2.e
Quant Time: Dec 27 04:41:36 2023
Quant Method : Z:\pestpcbsrv\HPCHEM1\ECD_Q\Method\PQ122123.M
Quant Title : GC EXTRACTABLES
QLast Update : Fri Dec 22 03:53:30 2023
Response via : Initial Calibration
Integrator: ChemStation

Volume Inj. : 2 µl
Signal #1 Phase : ZB-MR1 Signal #2 Phase: ZB-MR2
Signal #1 Info : 30Mx0.32mmx 0.50µ Signal #2 Info : 30M x 0.32mm x 0.25µm

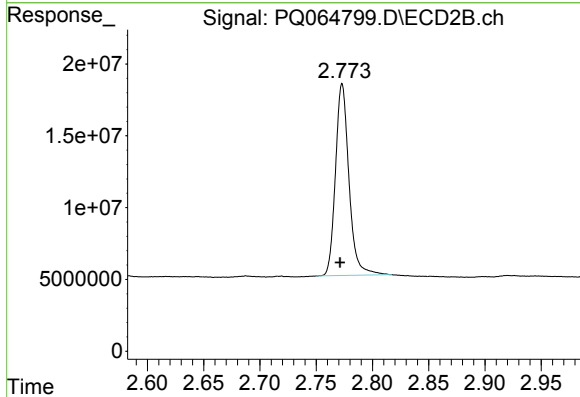




#1 Tetrachloro-m-xylene

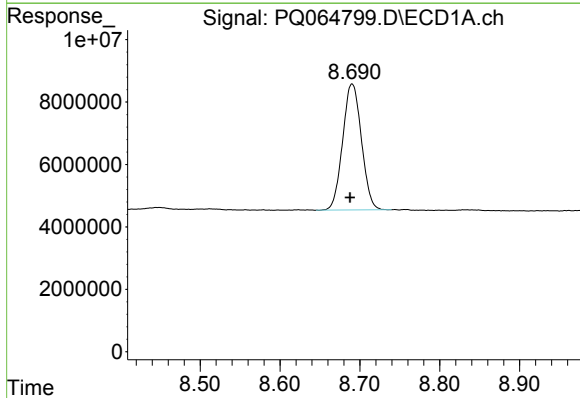
R.T.: 3.457 min
 Delta R.T.: 0.002 min
 Response: 88989021
 Conc: 20.86 ng/ml

Instrument :
 ECD_Q
 ClientSampleId :
 GHL-SS-14-0-2



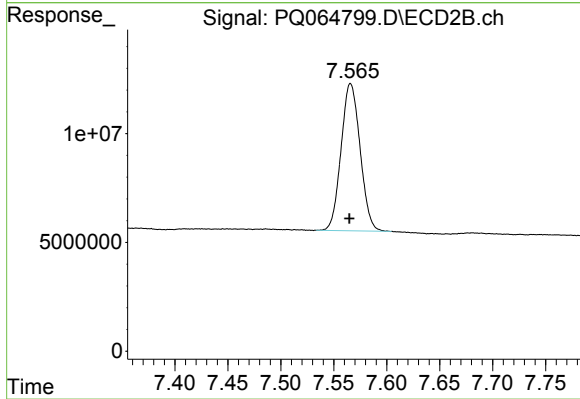
#1 Tetrachloro-m-xylene

R.T.: 2.773 min
 Delta R.T.: 0.002 min
 Response: 111660307
 Conc: 21.63 ng/ml



#2 Decachlorobiphenyl

R.T.: 8.690 min
 Delta R.T.: 0.002 min
 Response: 65912132
 Conc: 18.92 ng/ml



#2 Decachlorobiphenyl

R.T.: 7.566 min
 Delta R.T.: 0.001 min
 Response: 84638965
 Conc: 17.41 ng/ml