

Data Path : Z:\pestpcbsrv\HPCHEM1\ECD\_Q\Data\PQ122719\  
 Data File : PQ045980.D  
 Signal(s) : Signal #1: ECD1A.ch Signal #2: ECD2B.ch  
 Acq On : 27 Dec 2019 16:49  
 Operator : SM\AJ  
 Sample : I.BLK  
 Misc :  
 ALS Vial : 2 Sample Multiplier: 1

Instrument :  
 ECD\_Q  
 ClientSampleId :  
 I.BLK

Integration File signal 1: autoint1.e  
 Integration File signal 2: autoint2.e  
 Quant Time: Dec 28 01:49:33 2019  
 Quant Method : Z:\pestpcbsrv\HPCHEM1\ECD\_Q\Method\PQ122719.M  
 Quant Title : GC EXTRACTABLES  
 QLast Update : Sat Dec 28 01:42:02 2019  
 Response via : Initial Calibration  
 Integrator: ChemStation

Volume Inj. : 2 µl  
 Signal #1 Phase : ZB-MR1 Signal #2 Phase: ZB-MR2  
 Signal #1 Info : 30Mx0.32mmx 0.50µ Signal #2 Info : 30M x 0.32mm x 0.25µm

Compound	RT#1	RT#2	Resp#1	Resp#2	ng/ml	ng/ml
-----						
System Monitoring Compounds						
1) SA Tetrachlo...	5.227	4.363	35036821	25247405	12.483	13.412
2) SA Decachlor...	11.379	9.794	113.7E6	78275542	25.146	24.115

Target Compounds

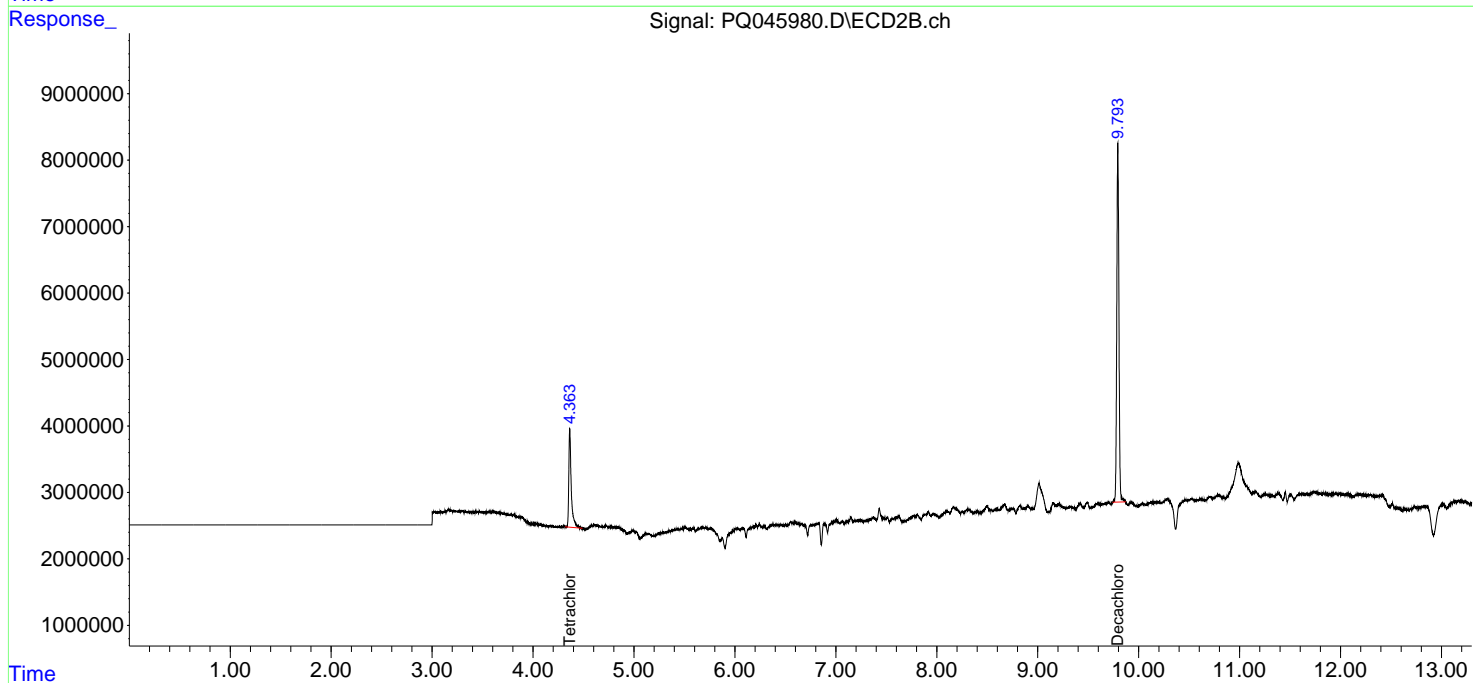
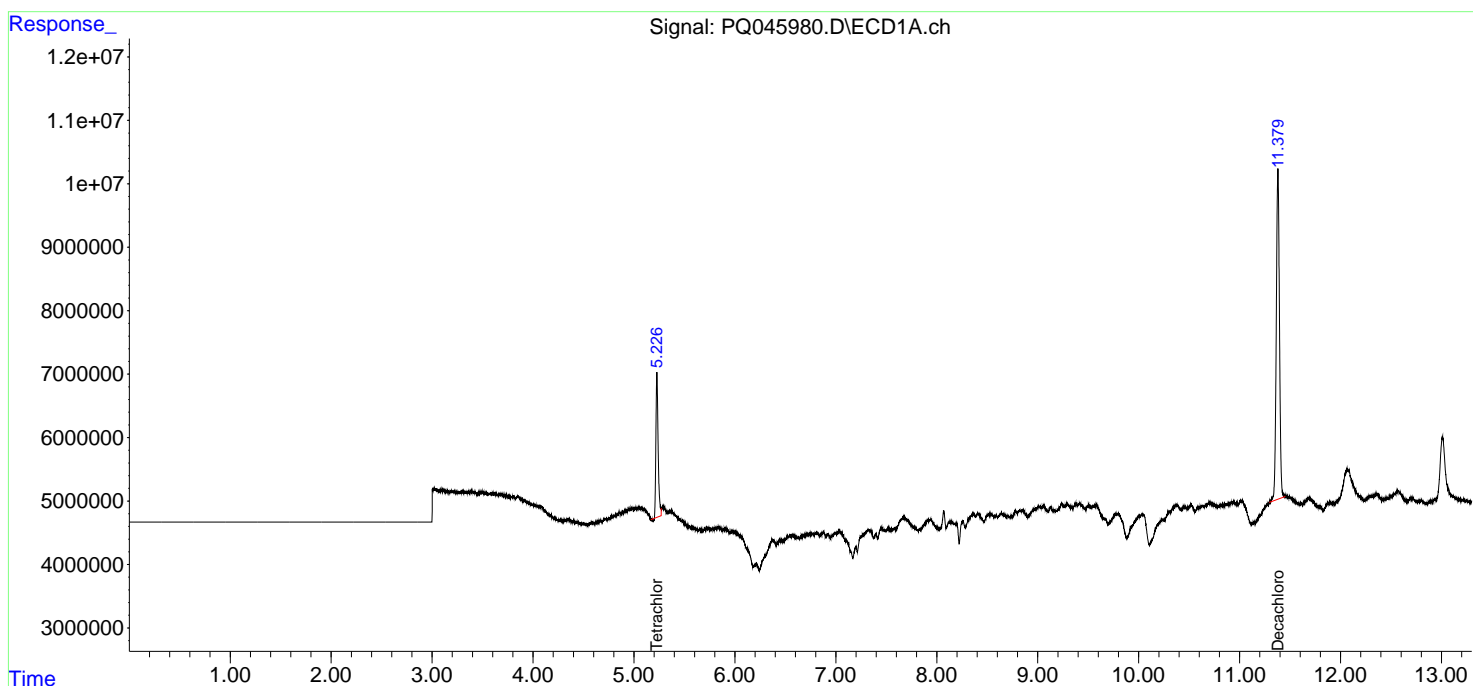
(f)=RT Delta > 1/2 Window (#)=Amounts differ by > 25% (m)=manual int.

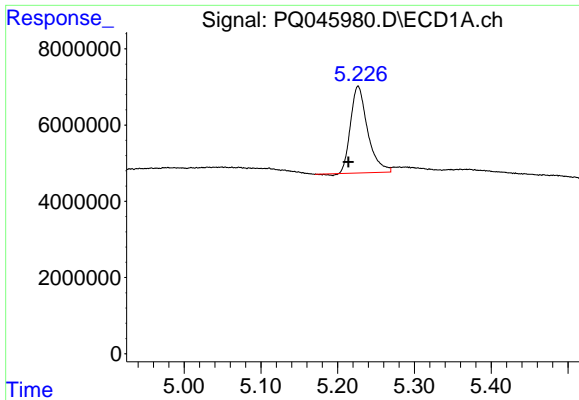
Data Path : Z:\pestpcbsrv\HPCHEM1\ECD\_Q\Data\PQ122719\  
 Data File : PQ045980.D  
 Signal(s) : Signal #1: ECD1A.ch Signal #2: ECD2B.ch  
 Acq On : 27 Dec 2019 16:49  
 Operator : SM\AJ  
 Sample : I.BLK  
 Misc :  
 ALS Vial : 2 Sample Multiplier: 1

Instrument :  
 ECD\_Q  
 ClientSampled :  
 I.BLK

Integration File signal 1: autoint1.e  
 Integration File signal 2: autoint2.e  
 Quant Time: Dec 28 01:49:33 2019  
 Quant Method : Z:\pestpcbsrv\HPCHEM1\ECD\_Q\Method\PQ122719.M  
 Quant Title : GC EXTRACTABLES  
 QLast Update : Sat Dec 28 01:42:02 2019  
 Response via : Initial Calibration  
 Integrator: ChemStation

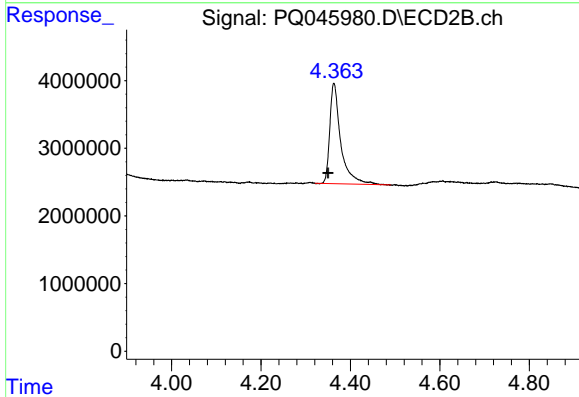
Volume Inj. : 2 µl  
 Signal #1 Phase : ZB-MR1 Signal #2 Phase: ZB-MR2  
 Signal #1 Info : 30Mx0.32mmx 0.50µ Signal #2 Info : 30M x 0.32mm x 0.25µm



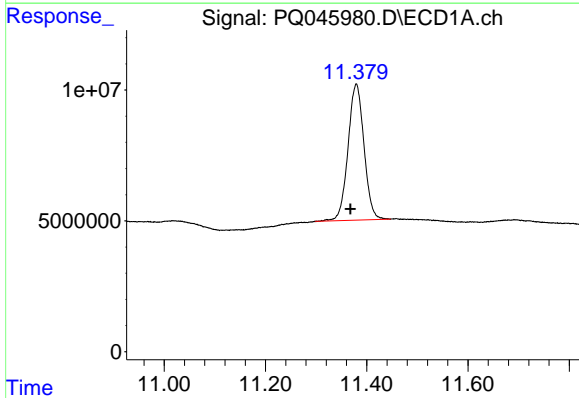


#1 Tetrachloro-m-xylene  
 R.T.: 5.227 min  
 Delta R.T.: 0.013 min  
 Response: 35036821  
 Conc: 12.48 ng/ml

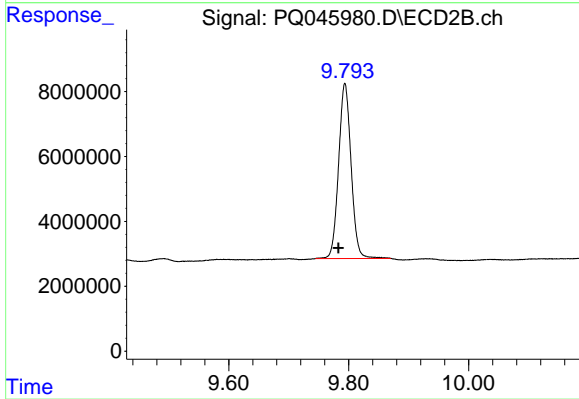
Instrument :  
 ECD\_Q  
 ClientSampleId :  
 I.BLK



#1 Tetrachloro-m-xylene  
 R.T.: 4.363 min  
 Delta R.T.: 0.013 min  
 Response: 25247405  
 Conc: 13.41 ng/ml



#2 Decachlorobiphenyl  
 R.T.: 11.379 min  
 Delta R.T.: 0.011 min  
 Response: 113650244  
 Conc: 25.15 ng/ml



#2 Decachlorobiphenyl  
 R.T.: 9.794 min  
 Delta R.T.: 0.011 min  
 Response: 78275542  
 Conc: 24.12 ng/ml