

Data Path : Z:\pestpcbsrv\HPCHEM1\ECD_Q\Data\PQ081518\
 Data File : PQ031169.D
 Signal(s) : Signal #1: ECD1A.ch Signal #2: ECD2B.ch
 Acq On : 15 Aug 2018 15:28
 Operator : SM\SJ
 Sample : AR1660CCC400
 Misc :
 ALS Vial : 3 Sample Multiplier: 1

Instrument :
 ECD_Q
 ClientSampled :

Integration File signal 1: autoint1.e
 Integration File signal 2: autoint2.e
 Quant Time: Aug 16 02:08:29 2018
 Quant Method : Z:\pestpcbsrv\HPCHEM1\ECD_Q\Method\PQ080918CLP.M
 Quant Title : GC EXTRACTABLES
 QLast Update : Mon Aug 13 07:57:53 2018
 Response via : Initial Calibration
 Integrator: ChemStation

Volume Inj. : 1 µl
 Signal #1 Phase : ZB MR1 Signal #2 Phase: ZB MR2
 Signal #1 Info : 30Mx0.32mmx 0.5µm Signal #2 Info : 30M x 0.32mm x 0.25µm

Compound	RT#1	RT#2	Resp#1	Resp#2	ng/ml	ng/ml
System Monitoring Compounds						
1) SA Tetrachlo...	4.608	3.887	35990618	32162256	18.104	16.551
2) SA Decachlor...	10.465	8.975	100.6E6	102.8E6	50.573	46.639
Target Compounds						
3) L1 AR-1016-1	5.320	4.571	19384078	17876485	391.760	356.877
4) L1 AR-1016-2	5.516	4.988	19983786	27825133	401.304	382.631
5) L1 AR-1016-3	5.785	5.008	29442590	39989371	412.839	370.178
6) L1 AR-1016-4	5.870	5.065	27660859	26489868	411.101	369.297
7) L1 AR-1016-5	6.263	5.442	23986645	28232791	421.967	442.271
8) L2 AR-1221-1	4.814	4.103	2494539	1984784	109.407	85.156
9) L2 AR-1221-2	4.905	4.192	3134389	2568235	162.237	143.643
10) L2 AR-1221-3	4.983	4.269	13240583	11539042	224.073	183.878
11) L3 AR-1232-1	5.807	4.768	43362679	18849378	962.428	866.879
12) L3 AR-1232-2	5.971	5.008	21916030	39989371	957.319	972.937
13) L3 AR-1232-3	6.057	5.268	14855294	23095357	1021.259	1334.877 #
14) L3 AR-1232-4	6.667	5.593	8845871	11661884	278.517	723.784 #
15) L3 AR-1232-5	6.707	5.837	7545475	6281515	258.708	295.065
16) L4 AR-1242-1	5.351	4.592	12093320	9872652	568.285	461.237
17) L4 AR-1242-2	6.103	5.187	18217067	22333226	492.098	534.318
18) L4 AR-1242-3	6.306	5.225	10169551	18243953	543.555	556.709
19) L4 AR-1242-4	6.349	6.014	7318104	1360401	534.293	32.957 #
20) L4 AR-1242-5	6.406	6.040	24962429	2376116	534.117	67.717 #
21) L5 AR-1248-1	6.057	5.225	14855294	18243953	229.524	269.418
22) L5 AR-1248-2	6.641	5.795	24337412	25144187	349.161	184.303 #
23) L5 AR-1248-3	6.667	5.837	8845871	6281515	97.372	67.827 #
24) L5 AR-1248-4	6.707	6.014	7545475	1360401	86.624	17.051 #
25) L5 AR-1248-5	6.858	6.363	20361043	44930443	353.525	622.256 #
26) L6 AR-1254-1	6.858	5.941	20361043	18270970	127.346	128.955
27) L6 AR-1254-2	7.142	6.260	3535248	3555087	35.932	29.730
28) L6 AR-1254-3	7.228	6.576	12010226	3148245	67.172	17.707 #
29) L6 AR-1254-4	7.512	6.905	7272345	6688010	55.635	62.391
30) L6 AR-1254-5	7.776	6.996	28304507	79868310	282.246	362.023 #
31) L7 AR-1260-1	7.390	6.479	56312894	56369175	449.566	379.021
32) L7 AR-1260-2	7.646	6.665	65288083	72075129	432.491	404.428
33) L7 AR-1260-3	7.932	6.823	78645188	66540718	437.766	387.079
34) L7 AR-1260-4	8.239	7.295	56789212	55500402	440.059	401.317
35) L7 AR-1260-5	8.570	7.533	117.7E6	135.7E6	456.820	424.326
36) L8 AR-1262-1	7.284	6.363	34739262	44930443	436.531	376.797
37) L8 AR-1262-2	8.064	7.086	25295631	28767376	343.671	300.116
38) L8 AR-1262-3	8.325	7.393	26847761	29052925	304.257	301.802
39) L8 AR-1262-4	8.971	7.819	42489632	30114226	281.261	177.878 #
40) L8 AR-1262-5	9.679	8.390	30143433	30801100	302.294	269.311
41) L9 AR-1268-1	8.005	7.032	48455514	57616555	661.131	656.390

Data Path : Z:\pestpcbsrv\HPCHEM1\ECD_Q\Data\PQ081518\
 Data File : PQ031169.D
 Signal(s) : Signal #1: ECD1A.ch Signal #2: ECD2B.ch
 Acq On : 15 Aug 2018 15:28
 Operator : SM\SJ
 Sample : AR1660CCC400
 Misc :
 ALS Vial : 3 Sample Multiplier: 1

Instrument :
 ECD_Q
 ClientSampleId :

Integration File signal 1: autoint1.e
 Integration File signal 2: autoint2.e
 Quant Time: Aug 16 02:08:29 2018
 Quant Method : Z:\pestpcbsrv\HPCHEM1\ECD_Q\Method\PQ080918CLP.M
 Quant Title : GC EXTRACTABLES
 QLast Update : Mon Aug 13 07:57:53 2018
 Response via : Initial Calibration
 Integrator: ChemStation

Volume Inj. : 1 µl
 Signal #1 Phase : ZB MR1 Signal #2 Phase: ZB MR2
 Signal #1 Info : 30Mx0.32mmx 0.5µm Signal #2 Info : 30M x 0.32mm x 0.25µm

	Compound	RT#1	RT#2	Resp#1	Resp#2	ng/ml	ng/ml
42)	L9 AR-1268-2	8.239	7.883	56789212	104.9E6	573.472	219.264 #
43)	L9 AR-1268-3	8.915	8.092	73770842	2612886	174.725	6.682 #
44)	L9 AR-1268-4	9.230	8.187	2461882	2032256	7.771	20.806 #
45)	L9 AR-1268-5	10.111	8.700	8818320	8290646	9.853	7.606

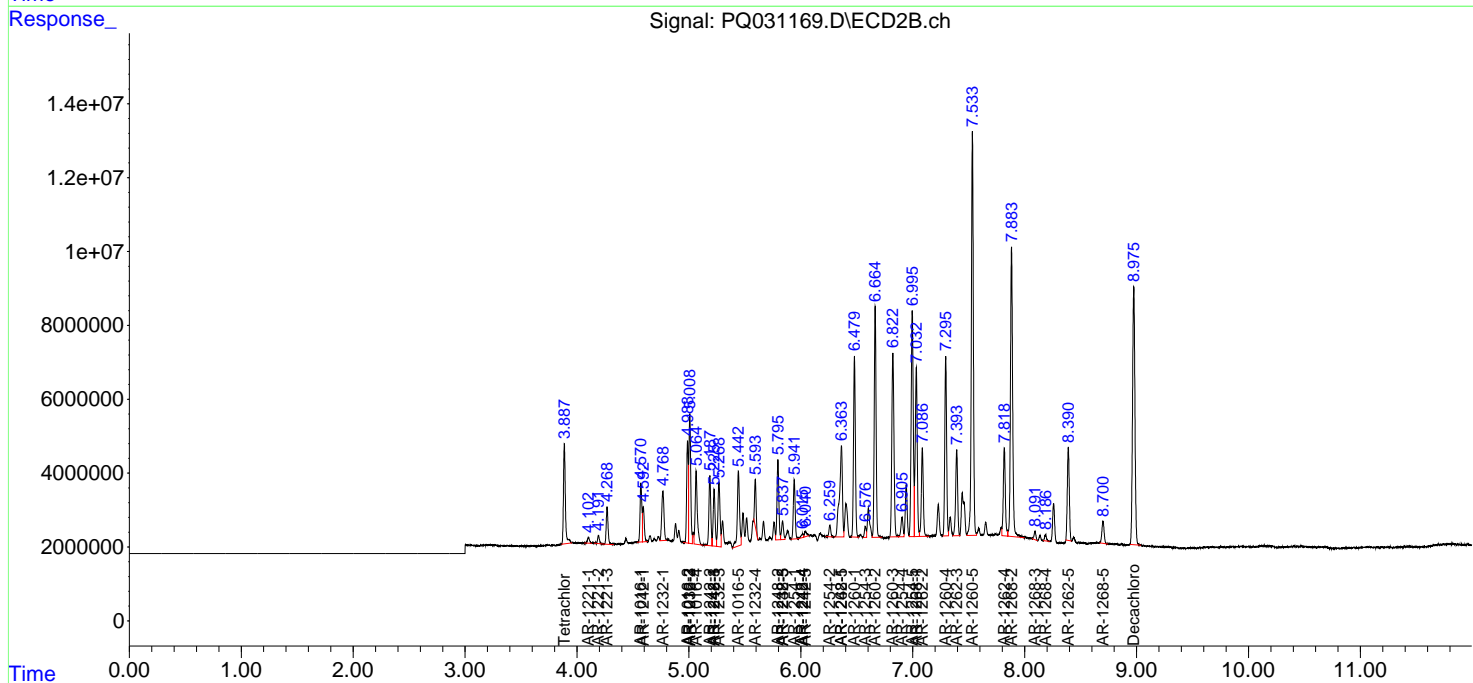
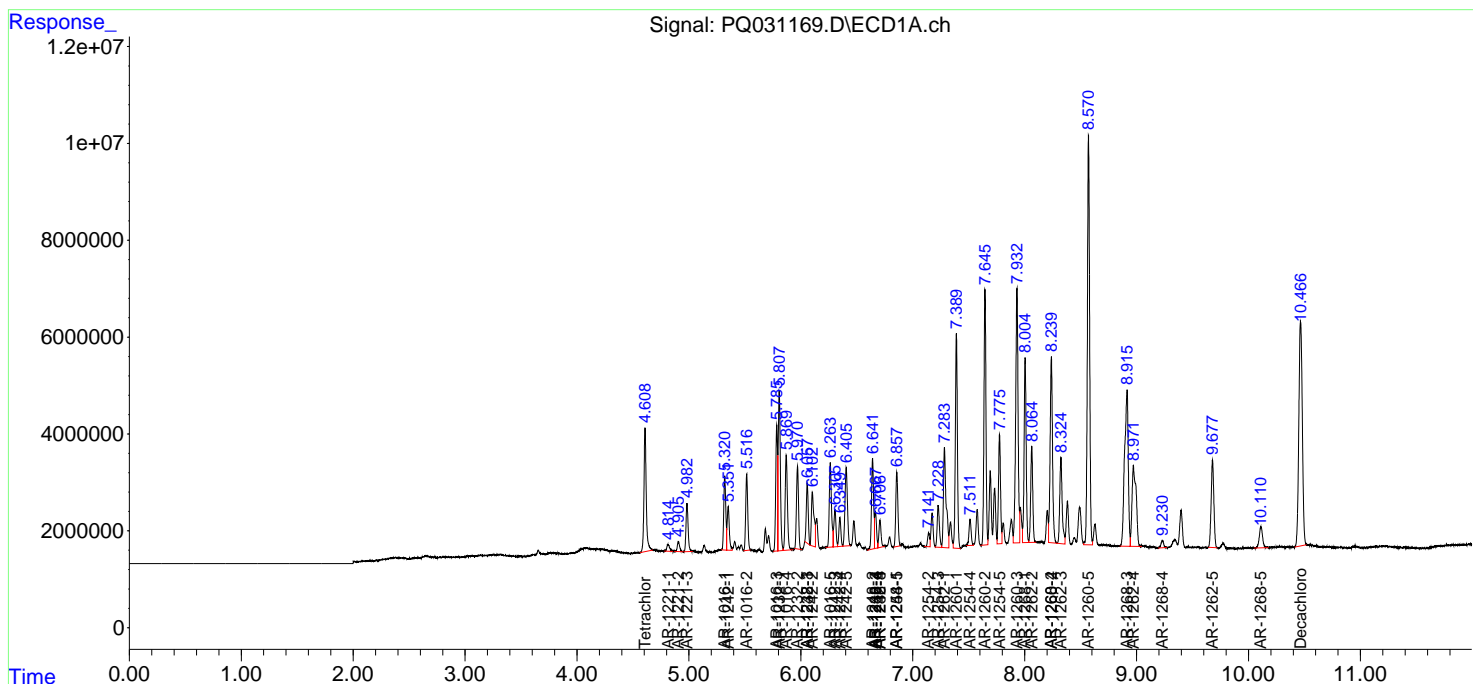
(f)=RT Delta > 1/2 Window (#)=Amounts differ by > 25% (m)=manual int.

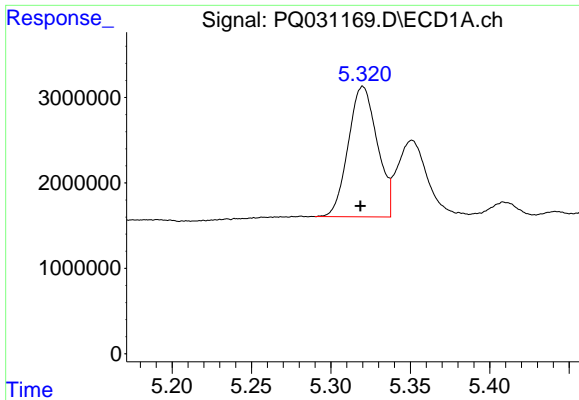
Data Path : Z:\pestpcbsrv\HPCHEM1\ECD_Q\Data\PQ081518\
 Data File : PQ031169.D
 Signal(s) : Signal #1: ECD1A.ch Signal #2: ECD2B.ch
 Acq On : 15 Aug 2018 15:28
 Operator : SM\SJ
 Sample : AR1660CCC400
 Misc :
 ALS Vial : 3 Sample Multiplier: 1

Instrument :
 ECD_Q
 ClientSampled :

Integration File signal 1: autoint1.e
 Integration File signal 2: autoint2.e
 Quant Time: Aug 16 02:08:29 2018
 Quant Method : Z:\pestpcbsrv\HPCHEM1\ECD_Q\Method\PQ080918CLP.M
 Quant Title : GC EXTRACTABLES
 QLast Update : Mon Aug 13 07:57:53 2018
 Response via : Initial Calibration
 Integrator: ChemStation

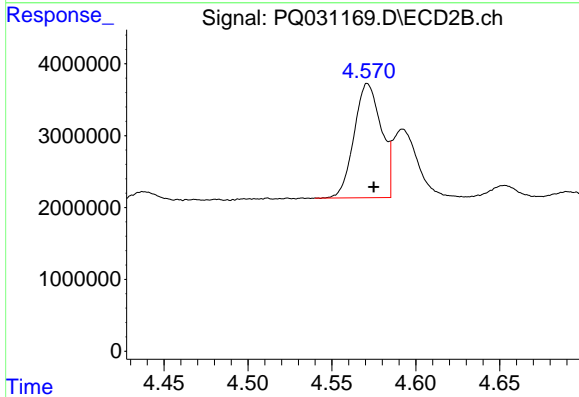
Volume Inj. : 1 µl
 Signal #1 Phase : ZB MR1 Signal #2 Phase: ZB MR2
 Signal #1 Info : 30Mx0.32mmx 0.5µm Signal #2 Info : 30M x 0.32mm x 0.25µm



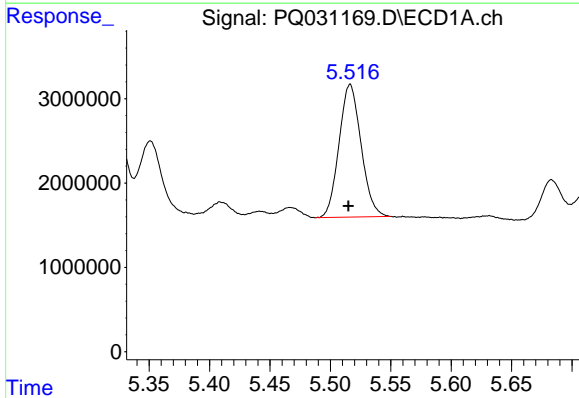


#3 AR-1016-1
 R.T.: 5.320 min
 Delta R.T.: 0.001 min
 Response: 19384078
 Conc: 391.76 ng/ml

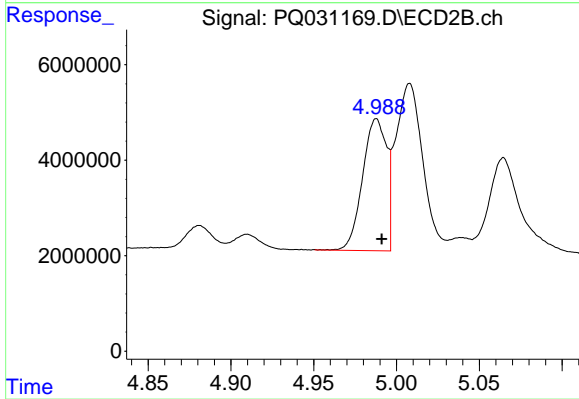
Instrument :
 ECD_Q
 ClientSampleId :



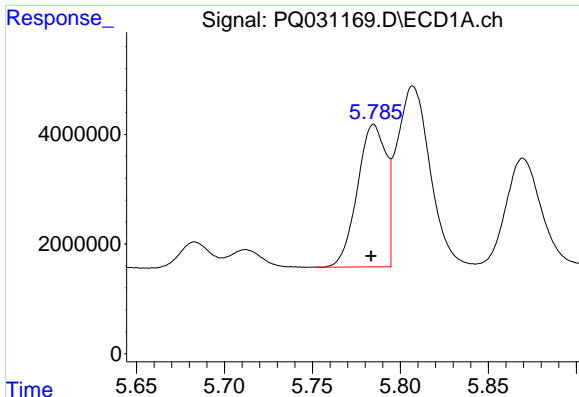
#3 AR-1016-1
 R.T.: 4.571 min
 Delta R.T.: -0.004 min
 Response: 17876485
 Conc: 356.88 ng/ml



#4 AR-1016-2
 R.T.: 5.516 min
 Delta R.T.: 0.001 min
 Response: 19983786
 Conc: 401.30 ng/ml



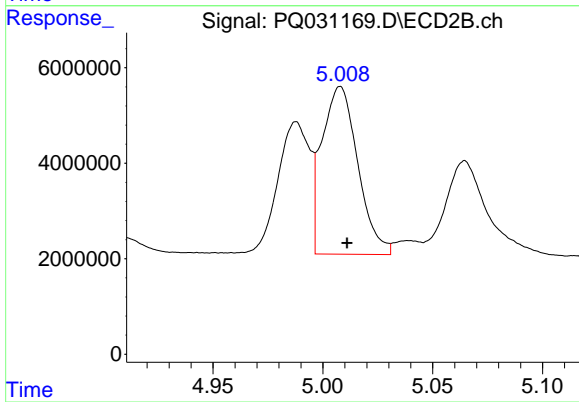
#4 AR-1016-2
 R.T.: 4.988 min
 Delta R.T.: -0.003 min
 Response: 27825133
 Conc: 382.63 ng/ml



#5 AR-1016-3

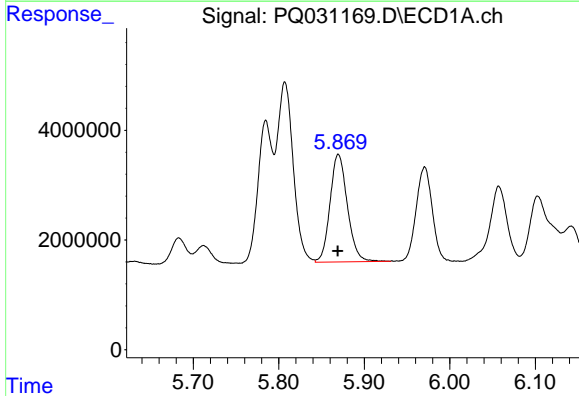
R.T.: 5.785 min
 Delta R.T.: 0.002 min
 Response: 29442590
 Conc: 412.84 ng/ml

Instrument :
 ECD_Q
 ClientSampled :



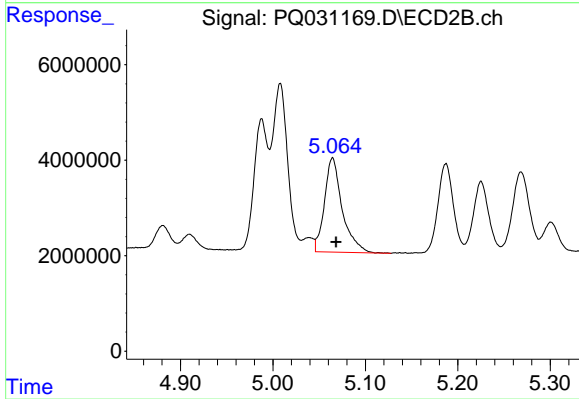
#5 AR-1016-3

R.T.: 5.008 min
 Delta R.T.: -0.003 min
 Response: 39989371
 Conc: 370.18 ng/ml



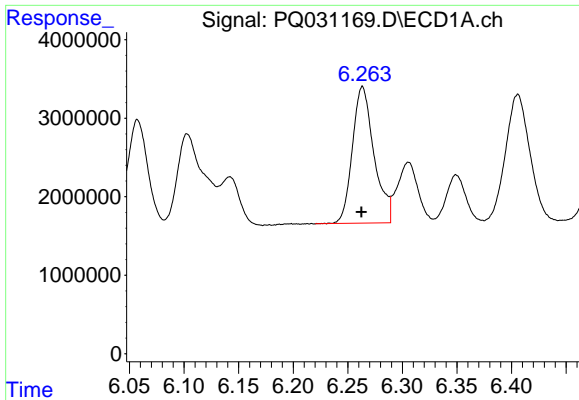
#6 AR-1016-4

R.T.: 5.870 min
 Delta R.T.: 0.000 min
 Response: 27660859
 Conc: 411.10 ng/ml



#6 AR-1016-4

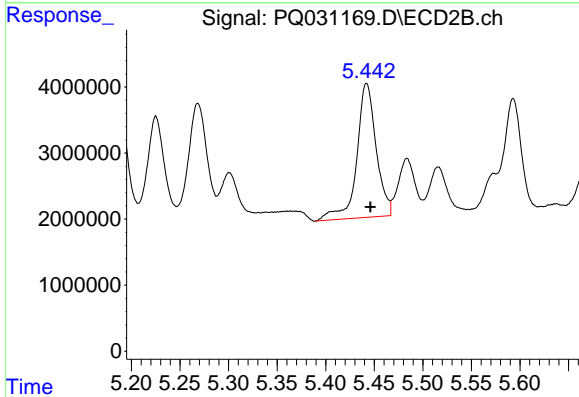
R.T.: 5.065 min
 Delta R.T.: -0.004 min
 Response: 26489868
 Conc: 369.30 ng/ml



#7 AR-1016-5

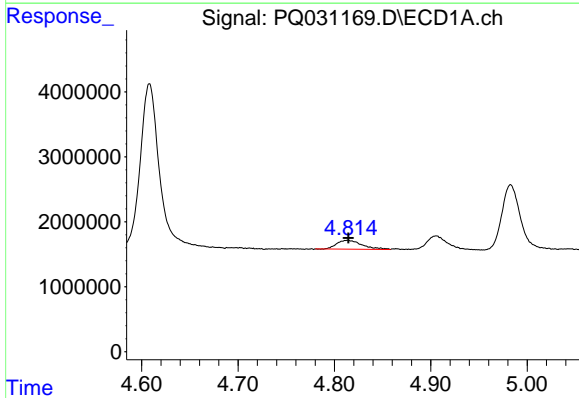
R.T.: 6.263 min
 Delta R.T.: 0.000 min
 Response: 23986645
 Conc: 421.97 ng/ml

Instrument :
 ECD_Q
 ClientSampleId :



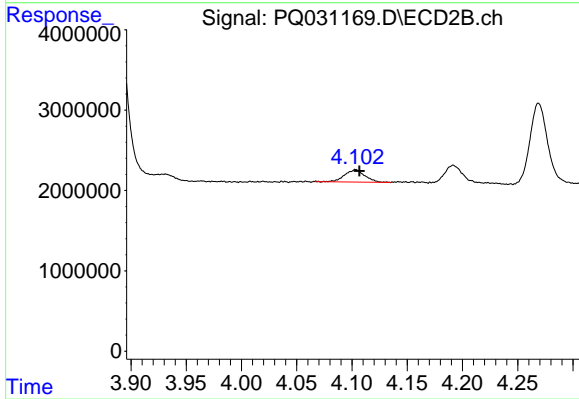
#7 AR-1016-5

R.T.: 5.442 min
 Delta R.T.: -0.004 min
 Response: 28232791
 Conc: 442.27 ng/ml



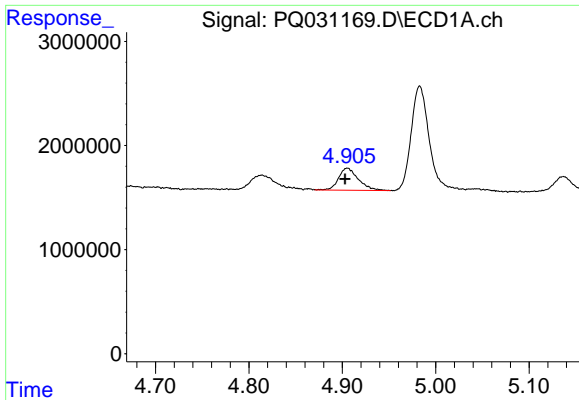
#8 AR-1221-1

R.T.: 4.814 min
 Delta R.T.: 0.000 min
 Response: 2494539
 Conc: 109.41 ng/ml



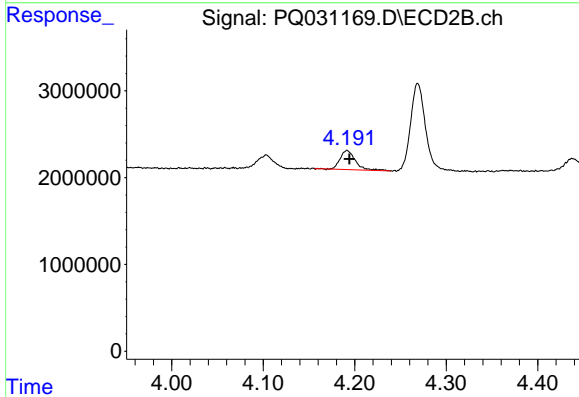
#8 AR-1221-1

R.T.: 4.103 min
 Delta R.T.: -0.003 min
 Response: 1984784
 Conc: 85.16 ng/ml

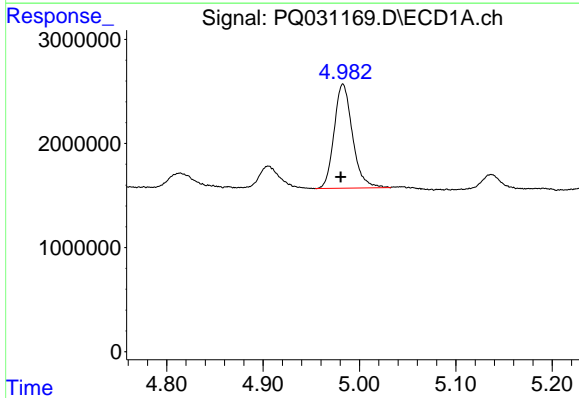


#9 AR-1221-2
 R.T.: 4.905 min
 Delta R.T.: 0.002 min
 Response: 3134389
 Conc: 162.24 ng/ml

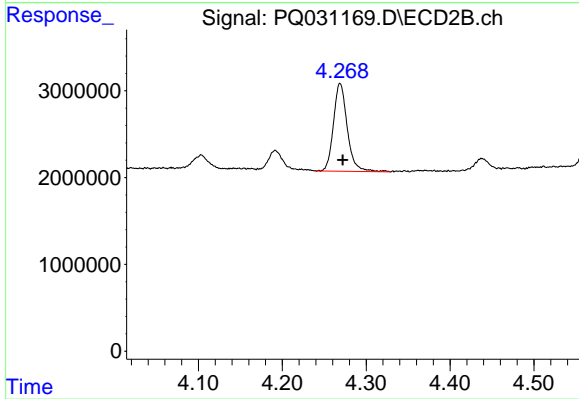
Instrument :
 ECD_Q
 ClientSampled :



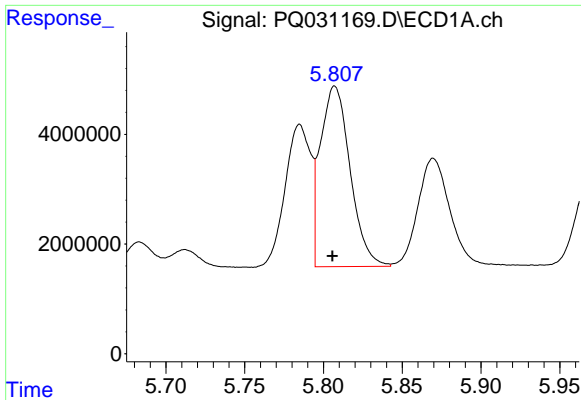
#9 AR-1221-2
 R.T.: 4.192 min
 Delta R.T.: -0.003 min
 Response: 2568235
 Conc: 143.64 ng/ml



#10 AR-1221-3
 R.T.: 4.983 min
 Delta R.T.: 0.002 min
 Response: 13240583
 Conc: 224.07 ng/ml



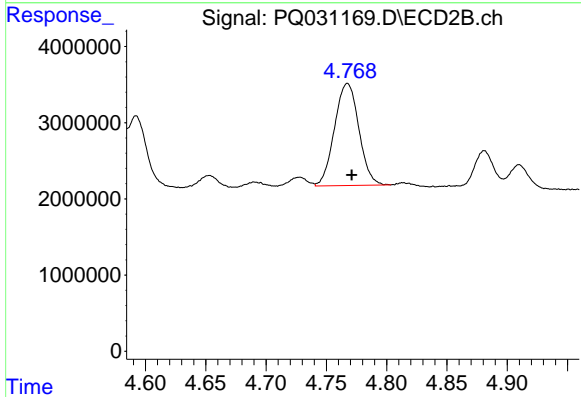
#10 AR-1221-3
 R.T.: 4.269 min
 Delta R.T.: -0.003 min
 Response: 11539042
 Conc: 183.88 ng/ml



#11 AR-1232-1

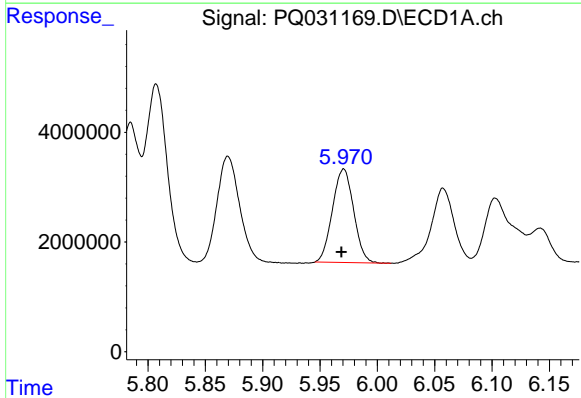
R.T.: 5.807 min
 Delta R.T.: 0.001 min
 Response: 43362679
 Conc: 962.43 ng/ml

Instrument :
 ECD_Q
 ClientSampled :



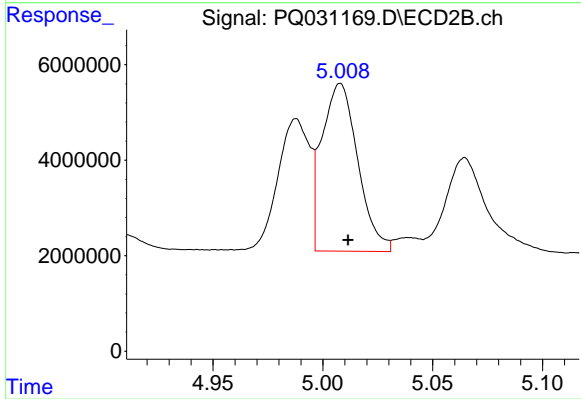
#11 AR-1232-1

R.T.: 4.768 min
 Delta R.T.: -0.004 min
 Response: 18849378
 Conc: 866.88 ng/ml



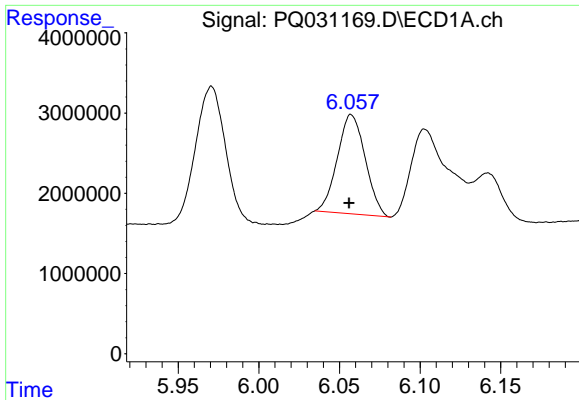
#12 AR-1232-2

R.T.: 5.971 min
 Delta R.T.: 0.002 min
 Response: 21916030
 Conc: 957.32 ng/ml



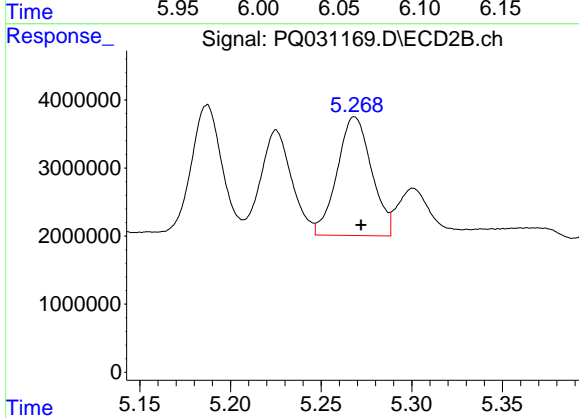
#12 AR-1232-2

R.T.: 5.008 min
 Delta R.T.: -0.003 min
 Response: 39989371
 Conc: 972.94 ng/ml

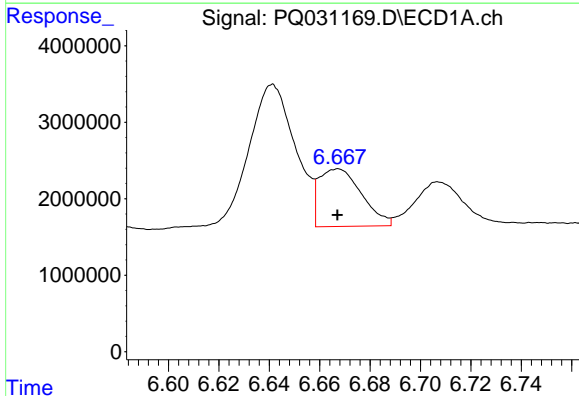


#13 AR-1232-3
 R.T.: 6.057 min
 Delta R.T.: 0.001 min
 Response: 14855294
 Conc: 1021.26 ng/ml

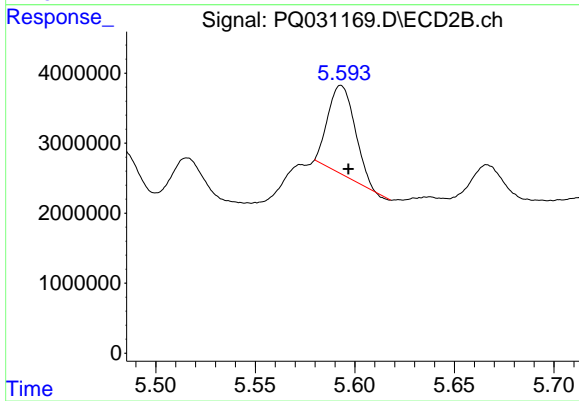
Instrument :
 ECD_Q
 ClientSampleId :



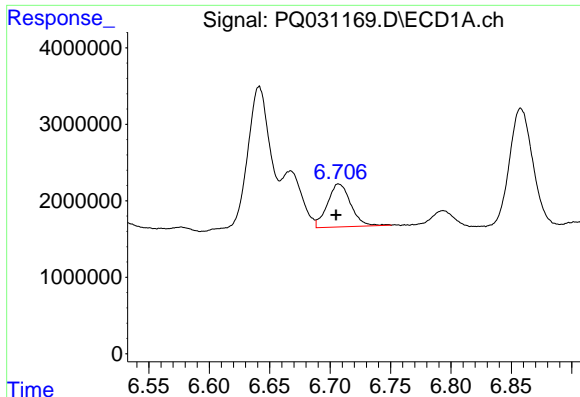
#13 AR-1232-3
 R.T.: 5.268 min
 Delta R.T.: -0.004 min
 Response: 23095357
 Conc: 1334.88 ng/ml



#14 AR-1232-4
 R.T.: 6.667 min
 Delta R.T.: 0.000 min
 Response: 8845871
 Conc: 278.52 ng/ml



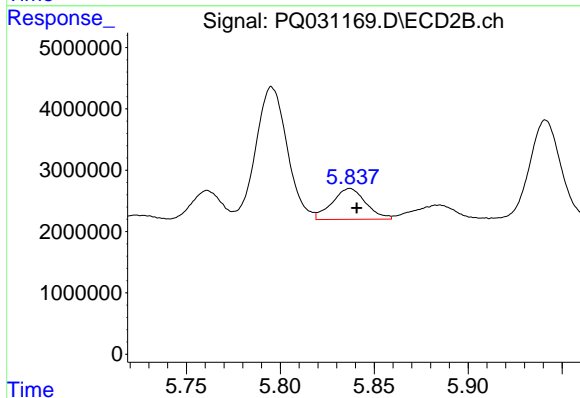
#14 AR-1232-4
 R.T.: 5.593 min
 Delta R.T.: -0.004 min
 Response: 11661884
 Conc: 723.78 ng/ml



#15 AR-1232-5

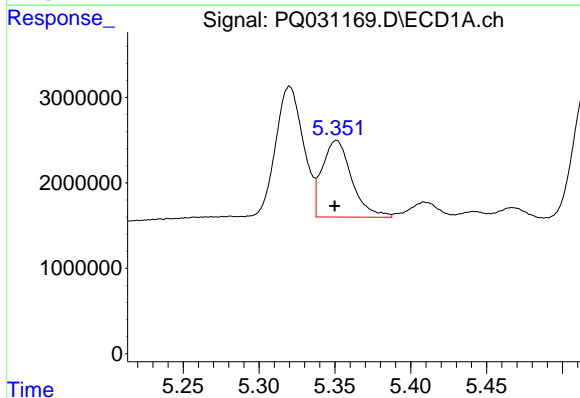
R.T.: 6.707 min
 Delta R.T.: 0.002 min
 Response: 7545475
 Conc: 258.71 ng/ml

Instrument :
 ECD_Q
 ClientSampleId :



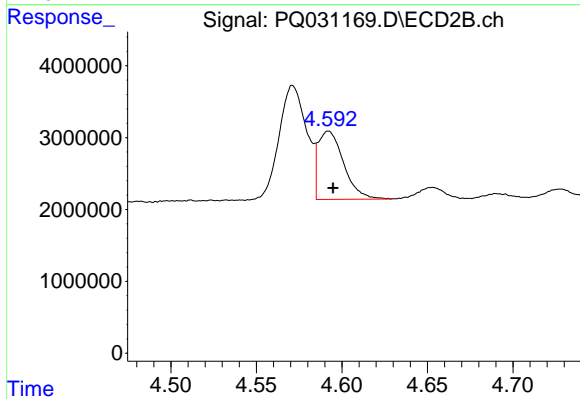
#15 AR-1232-5

R.T.: 5.837 min
 Delta R.T.: -0.004 min
 Response: 6281515
 Conc: 295.07 ng/ml



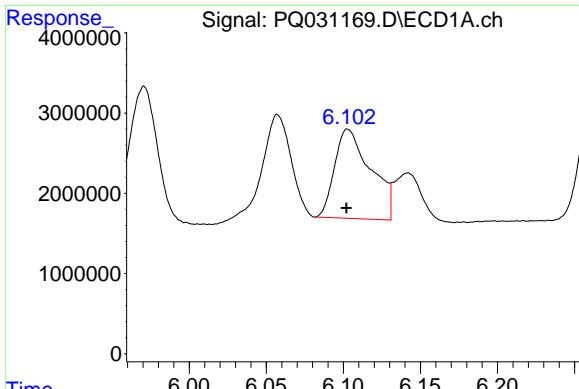
#16 AR-1242-1

R.T.: 5.351 min
 Delta R.T.: 0.001 min
 Response: 12093320
 Conc: 568.28 ng/ml



#16 AR-1242-1

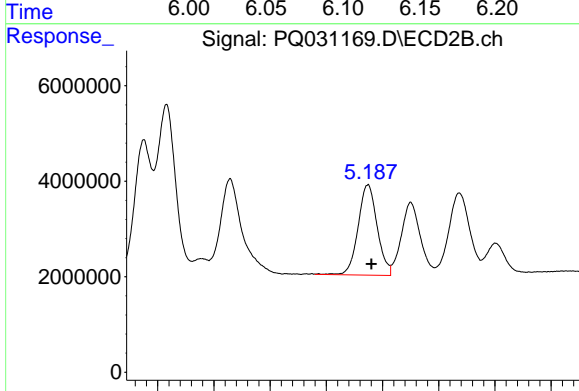
R.T.: 4.592 min
 Delta R.T.: -0.003 min
 Response: 9872652
 Conc: 461.24 ng/ml



#17 AR-1242-2

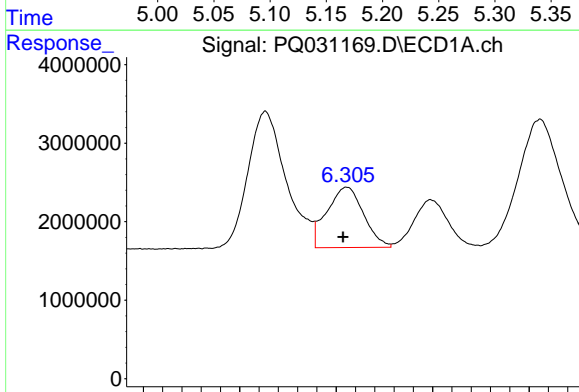
R.T.: 6.103 min
 Delta R.T.: 0.001 min
 Response: 18217067
 Conc: 492.10 ng/ml

Instrument :
 ECD_Q
 ClientSampleId :



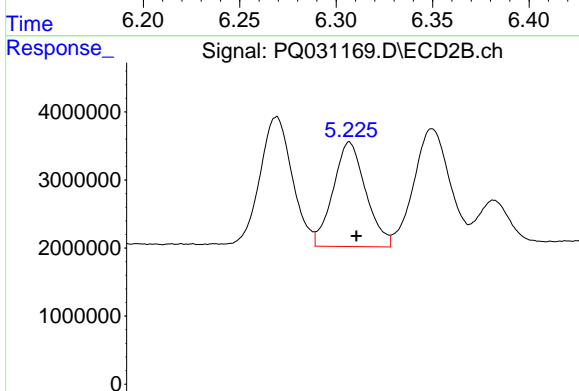
#17 AR-1242-2

R.T.: 5.187 min
 Delta R.T.: -0.003 min
 Response: 22333226
 Conc: 534.32 ng/ml



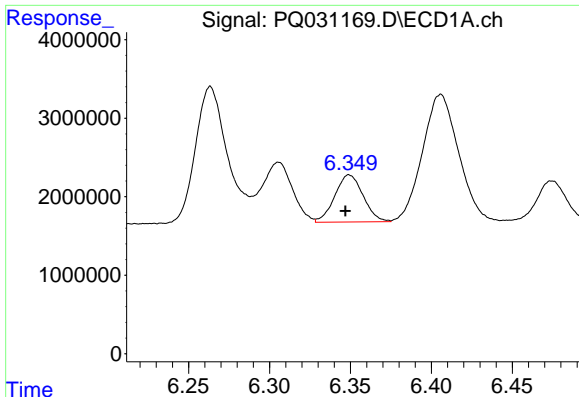
#18 AR-1242-3

R.T.: 6.306 min
 Delta R.T.: 0.002 min
 Response: 10169551
 Conc: 543.55 ng/ml



#18 AR-1242-3

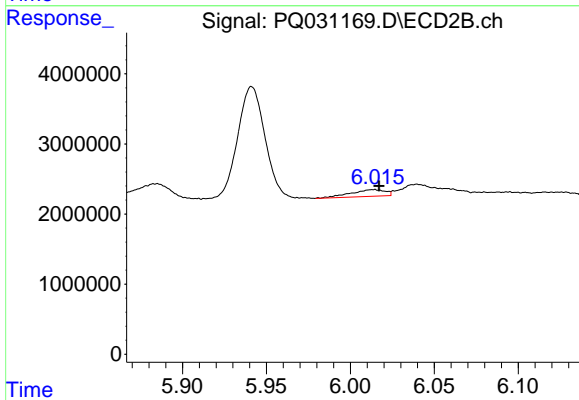
R.T.: 5.225 min
 Delta R.T.: -0.004 min
 Response: 18243953
 Conc: 556.71 ng/ml



#19 AR-1242-4

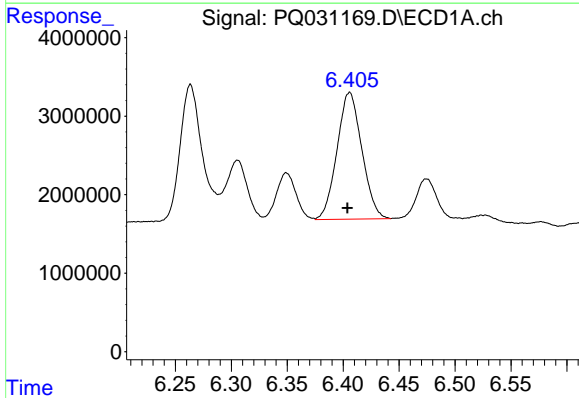
R.T.: 6.349 min
 Delta R.T.: 0.002 min
 Response: 7318104
 Conc: 534.29 ng/ml

Instrument :
 ECD_Q
 ClientSampled :



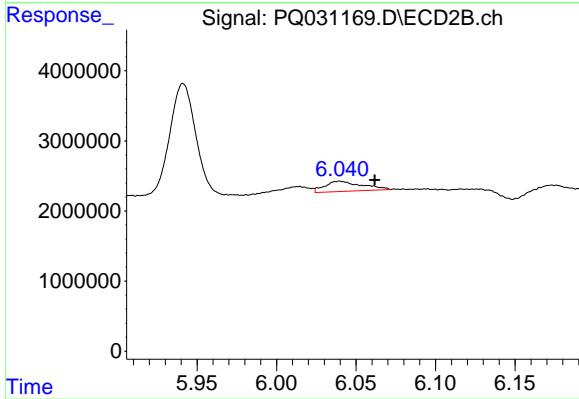
#19 AR-1242-4

R.T.: 6.014 min
 Delta R.T.: -0.003 min
 Response: 1360401
 Conc: 32.96 ng/ml



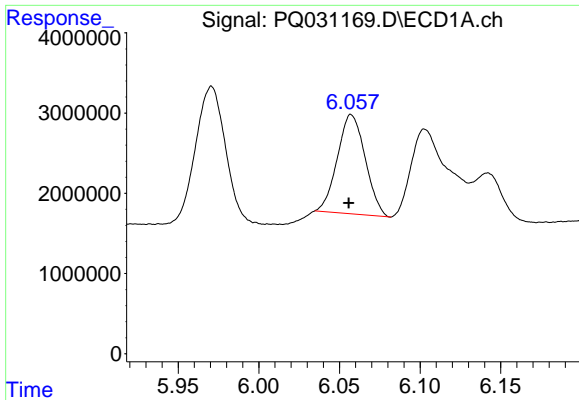
#20 AR-1242-5

R.T.: 6.406 min
 Delta R.T.: 0.002 min
 Response: 24962429
 Conc: 534.12 ng/ml



#20 AR-1242-5

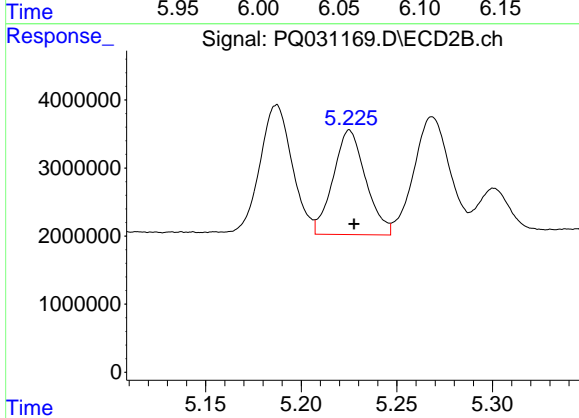
R.T.: 6.040 min
 Delta R.T.: -0.022 min
 Response: 2376116
 Conc: 67.72 ng/ml



#21 AR-1248-1

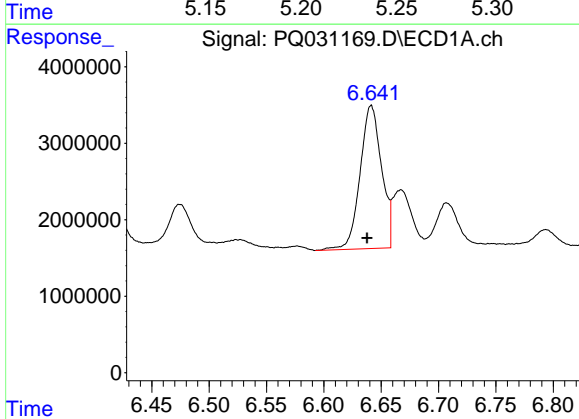
R.T.: 6.057 min
 Delta R.T.: 0.002 min
 Response: 14855294
 Conc: 229.52 ng/ml

Instrument :
 ECD_Q
 ClientSampled :



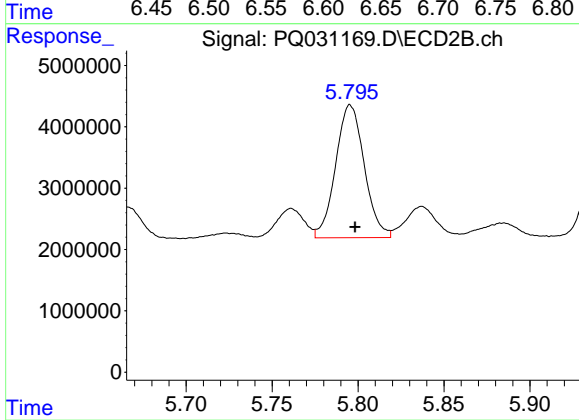
#21 AR-1248-1

R.T.: 5.225 min
 Delta R.T.: -0.002 min
 Response: 18243953
 Conc: 269.42 ng/ml



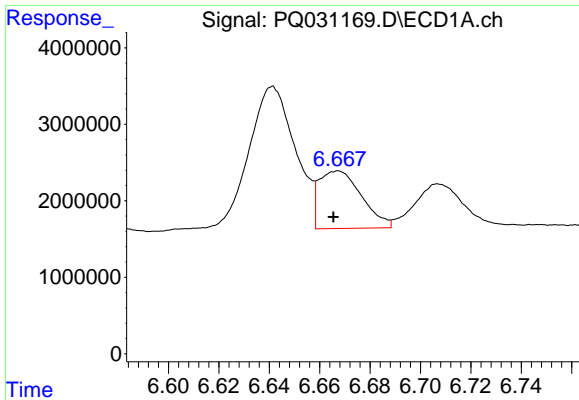
#22 AR-1248-2

R.T.: 6.641 min
 Delta R.T.: 0.003 min
 Response: 24337412
 Conc: 349.16 ng/ml



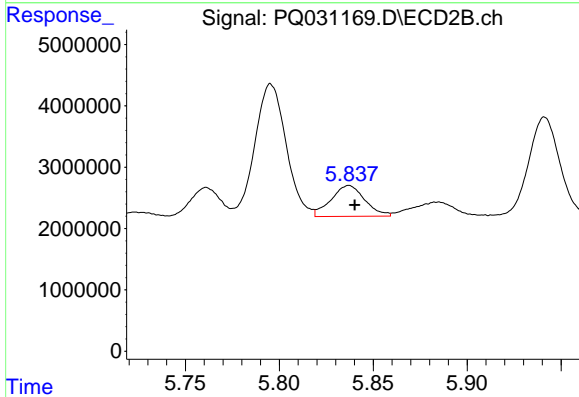
#22 AR-1248-2

R.T.: 5.795 min
 Delta R.T.: -0.003 min
 Response: 25144187
 Conc: 184.30 ng/ml

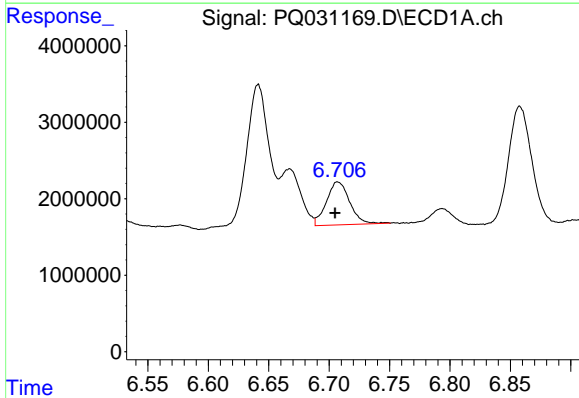


#23 AR-1248-3
 R.T.: 6.667 min
 Delta R.T.: 0.002 min
 Response: 8845871
 Conc: 97.37 ng/ml

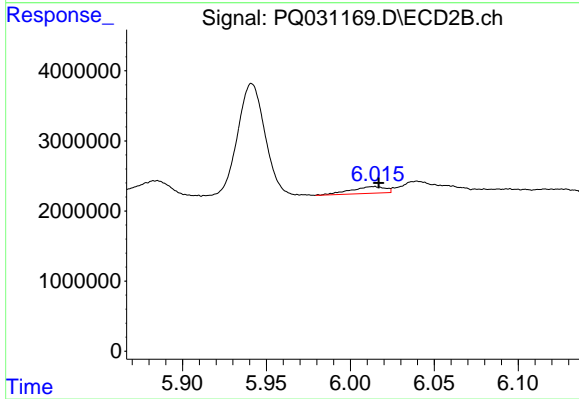
Instrument :
 ECD_Q
 ClientSampled :



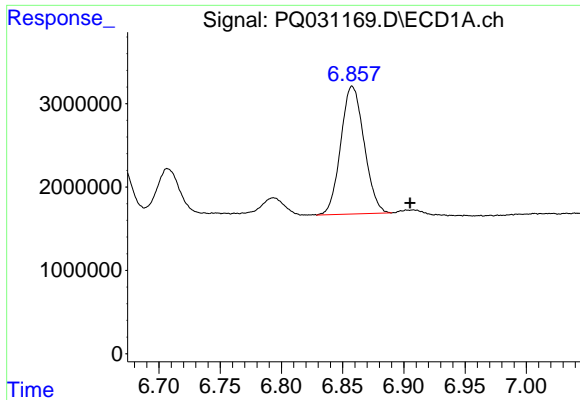
#23 AR-1248-3
 R.T.: 5.837 min
 Delta R.T.: -0.003 min
 Response: 6281515
 Conc: 67.83 ng/ml



#24 AR-1248-4
 R.T.: 6.707 min
 Delta R.T.: 0.002 min
 Response: 7545475
 Conc: 86.62 ng/ml



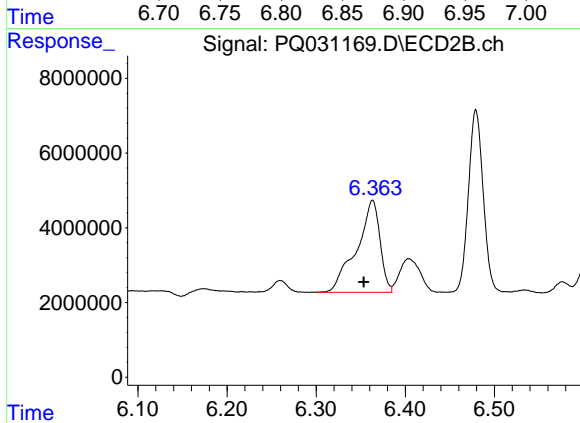
#24 AR-1248-4
 R.T.: 6.014 min
 Delta R.T.: -0.003 min
 Response: 1360401
 Conc: 17.05 ng/ml



#25 AR-1248-5

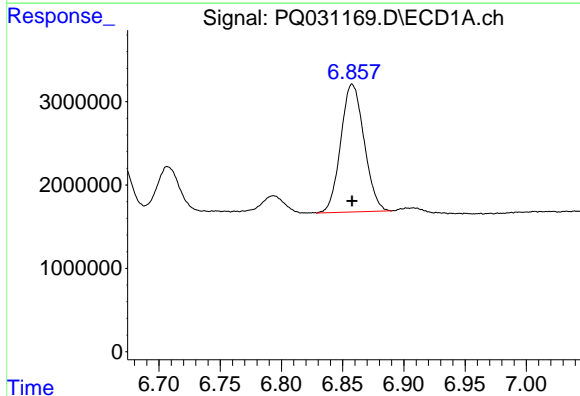
R.T.: 6.858 min
 Delta R.T.: -0.047 min
 Response: 20361043
 Conc: 353.53 ng/ml

Instrument :
 ECD_Q
 ClientSampled :



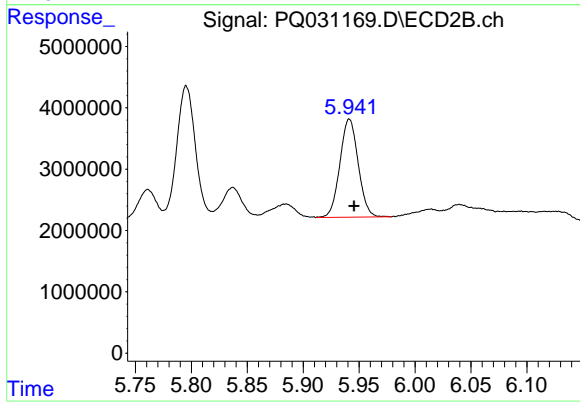
#25 AR-1248-5

R.T.: 6.363 min
 Delta R.T.: 0.010 min
 Response: 44930443
 Conc: 622.26 ng/ml



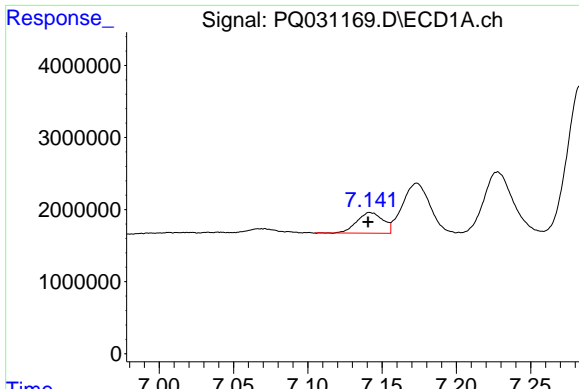
#26 AR-1254-1

R.T.: 6.858 min
 Delta R.T.: 0.000 min
 Response: 20361043
 Conc: 127.35 ng/ml



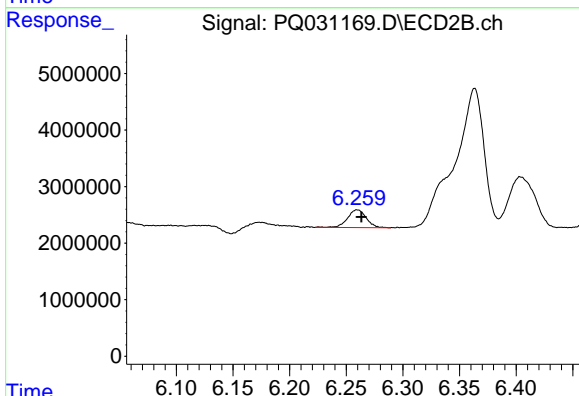
#26 AR-1254-1

R.T.: 5.941 min
 Delta R.T.: -0.004 min
 Response: 18270970
 Conc: 128.96 ng/ml

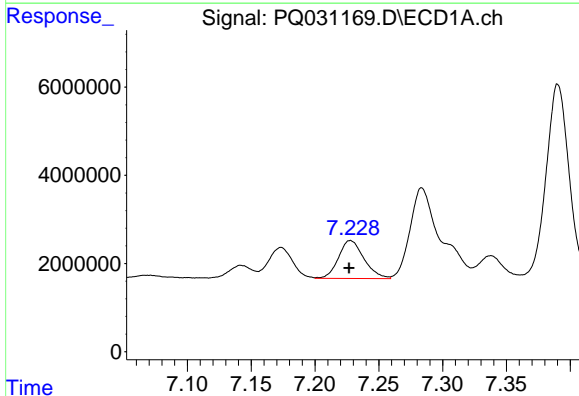


#27 AR-1254-2
 R.T.: 7.142 min
 Delta R.T.: 0.001 min
 Response: 3535248
 Conc: 35.93 ng/ml

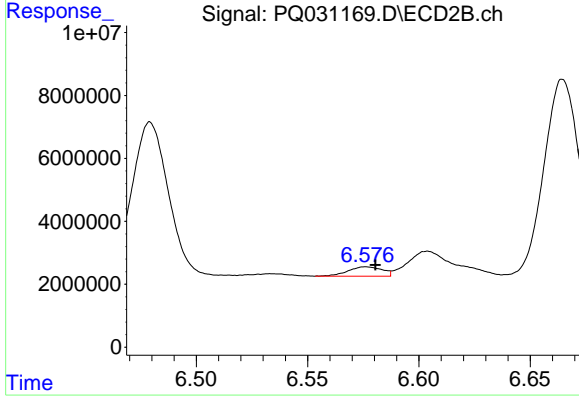
Instrument :
 ECD_Q
 ClientSampleId :



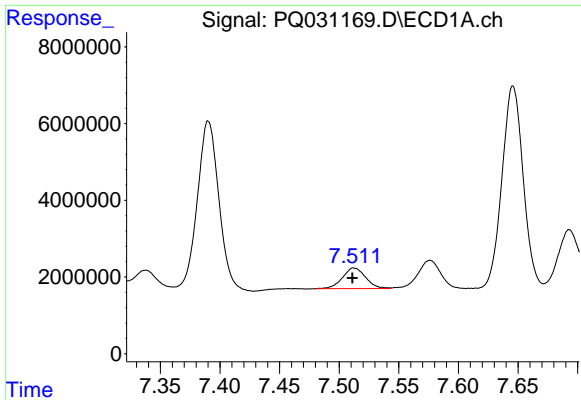
#27 AR-1254-2
 R.T.: 6.260 min
 Delta R.T.: -0.004 min
 Response: 3555087
 Conc: 29.73 ng/ml



#28 AR-1254-3
 R.T.: 7.228 min
 Delta R.T.: 0.001 min
 Response: 12010226
 Conc: 67.17 ng/ml



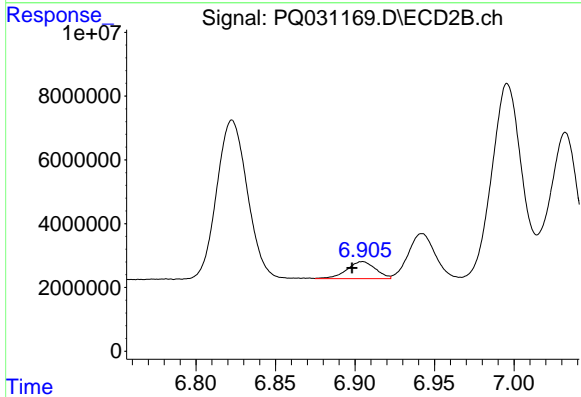
#28 AR-1254-3
 R.T.: 6.576 min
 Delta R.T.: -0.004 min
 Response: 3148245
 Conc: 17.71 ng/ml



#29 AR-1254-4

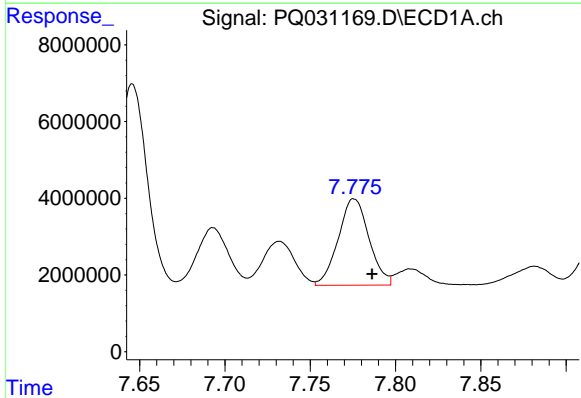
R.T.: 7.512 min
 Delta R.T.: 0.001 min
 Response: 7272345
 Conc: 55.64 ng/ml

Instrument :
 ECD_Q
 ClientSampled :



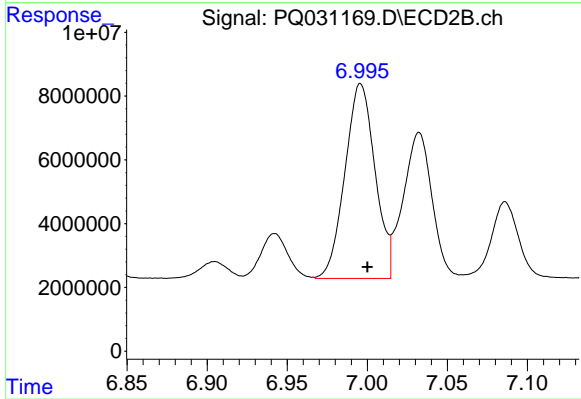
#29 AR-1254-4

R.T.: 6.905 min
 Delta R.T.: 0.007 min
 Response: 6688010
 Conc: 62.39 ng/ml



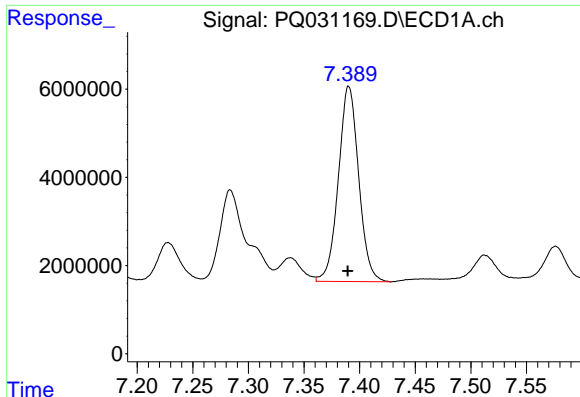
#30 AR-1254-5

R.T.: 7.776 min
 Delta R.T.: -0.010 min
 Response: 28304507
 Conc: 282.25 ng/ml



#30 AR-1254-5

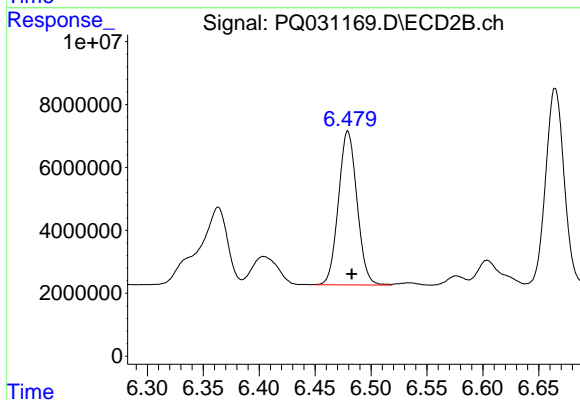
R.T.: 6.996 min
 Delta R.T.: -0.004 min
 Response: 79868310
 Conc: 362.02 ng/ml



#31 AR-1260-1

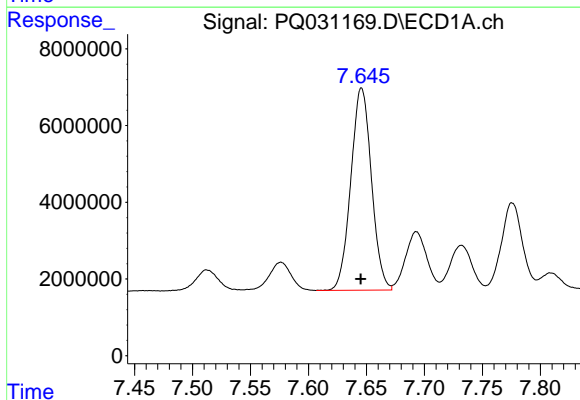
R.T.: 7.390 min
 Delta R.T.: 0.000 min
 Response: 56312894
 Conc: 449.57 ng/ml

Instrument :
 ECD_Q
 ClientSampleId :



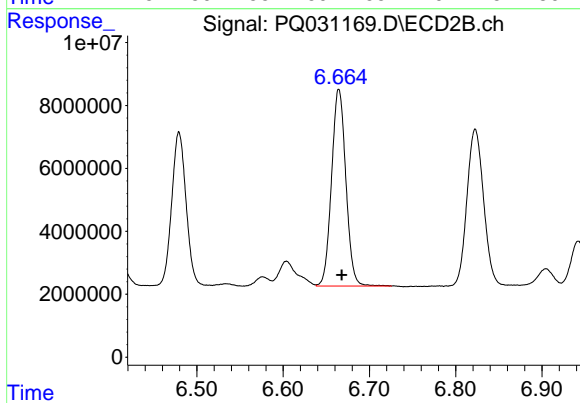
#31 AR-1260-1

R.T.: 6.479 min
 Delta R.T.: -0.003 min
 Response: 56369175
 Conc: 379.02 ng/ml



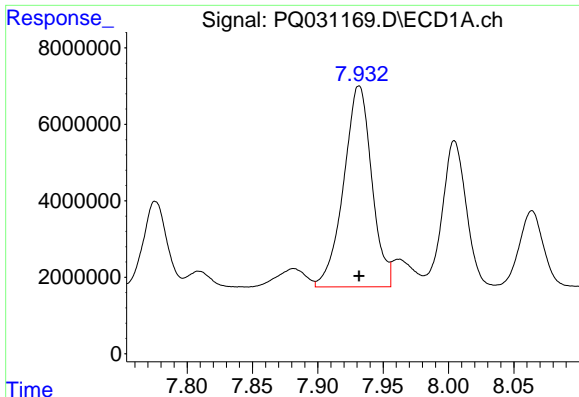
#32 AR-1260-2

R.T.: 7.646 min
 Delta R.T.: 0.000 min
 Response: 65288083
 Conc: 432.49 ng/ml



#32 AR-1260-2

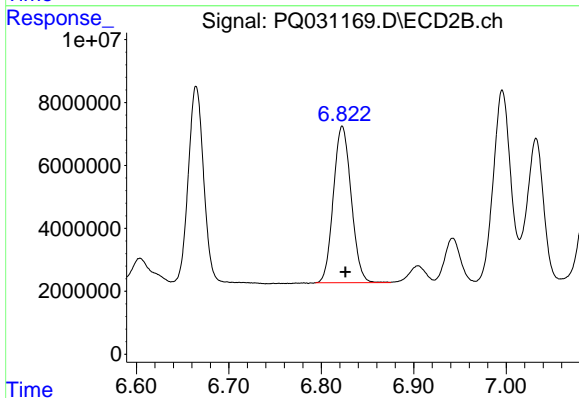
R.T.: 6.665 min
 Delta R.T.: -0.003 min
 Response: 72075129
 Conc: 404.43 ng/ml



#33 AR-1260-3

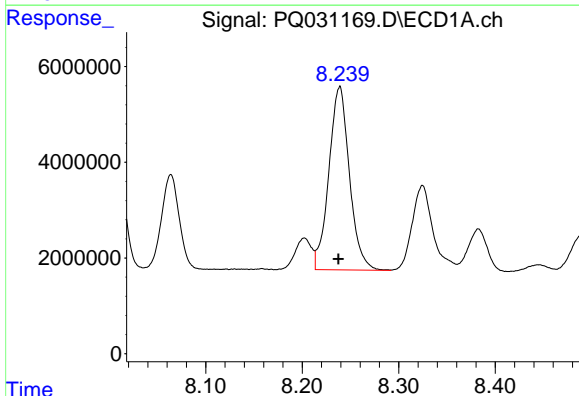
R.T.: 7.932 min
Delta R.T.: 0.000 min
Response: 78645188
Conc: 437.77 ng/ml

Instrument :
ECD_Q
ClientSampled :



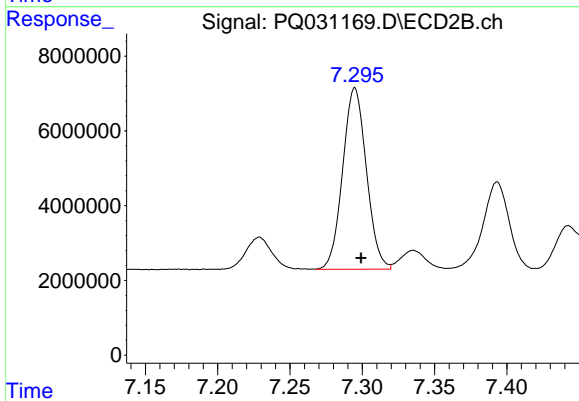
#33 AR-1260-3

R.T.: 6.823 min
Delta R.T.: -0.003 min
Response: 66540718
Conc: 387.08 ng/ml



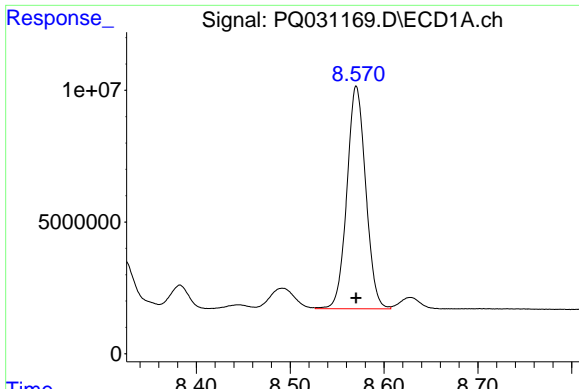
#34 AR-1260-4

R.T.: 8.239 min
Delta R.T.: 0.001 min
Response: 56789212
Conc: 440.06 ng/ml



#34 AR-1260-4

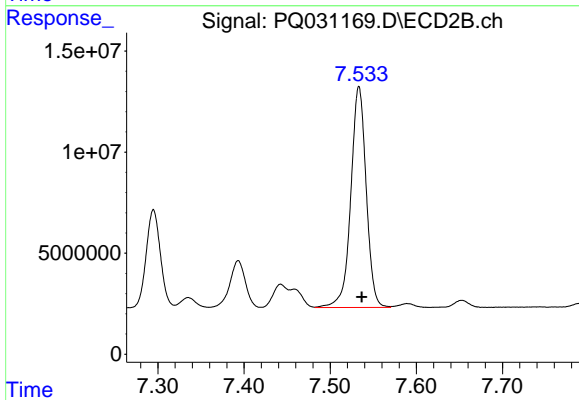
R.T.: 7.295 min
Delta R.T.: -0.004 min
Response: 55500402
Conc: 401.32 ng/ml



#35 AR-1260-5

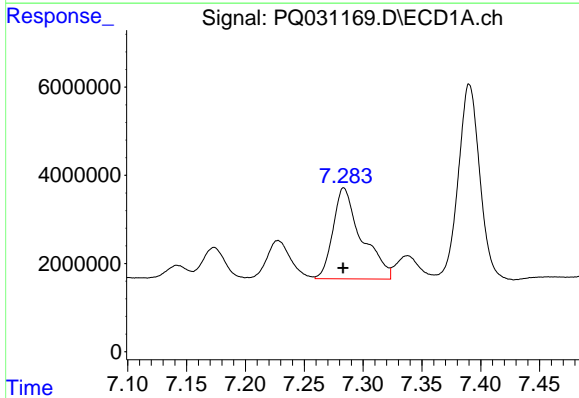
R.T.: 8.570 min
 Delta R.T.: 0.000 min
 Response: 117661576
 Conc: 456.82 ng/ml

Instrument :
 ECD_Q
 ClientSampleId :



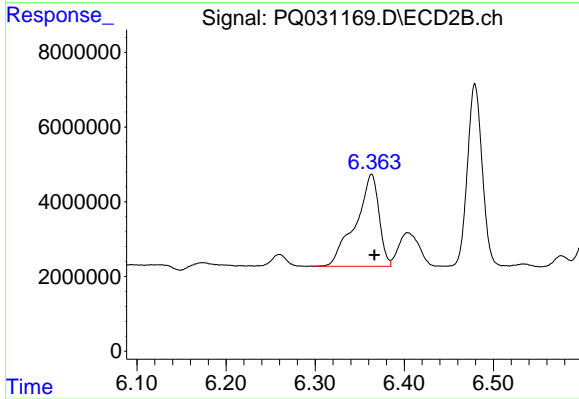
#35 AR-1260-5

R.T.: 7.533 min
 Delta R.T.: -0.003 min
 Response: 135724885
 Conc: 424.33 ng/ml



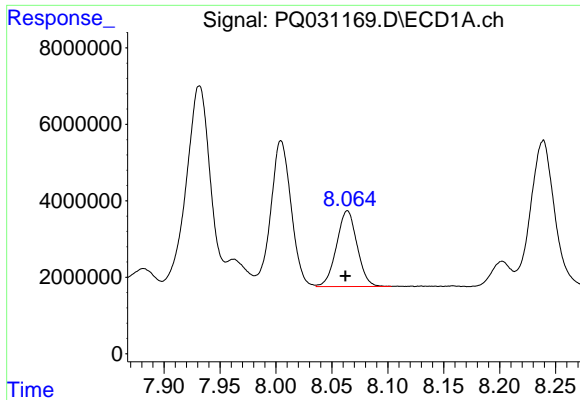
#36 AR-1262-1

R.T.: 7.284 min
 Delta R.T.: 0.000 min
 Response: 34739262
 Conc: 436.53 ng/ml



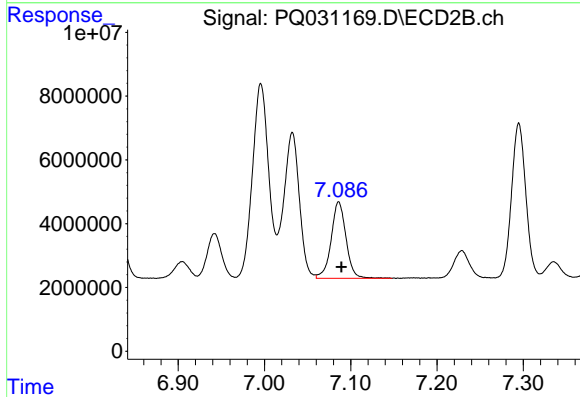
#36 AR-1262-1

R.T.: 6.363 min
 Delta R.T.: -0.003 min
 Response: 44930443
 Conc: 376.80 ng/ml

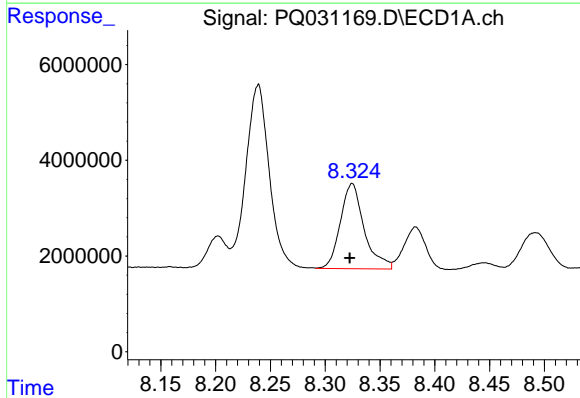


#37 AR-1262-2
 R.T.: 8.064 min
 Delta R.T.: 0.002 min
 Response: 25295631
 Conc: 343.67 ng/ml

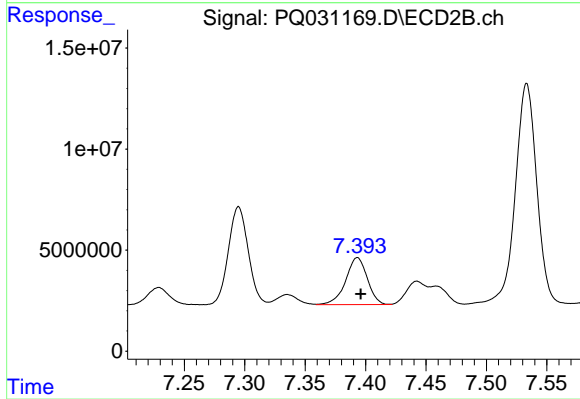
Instrument :
 ECD_Q
 ClientSampled :



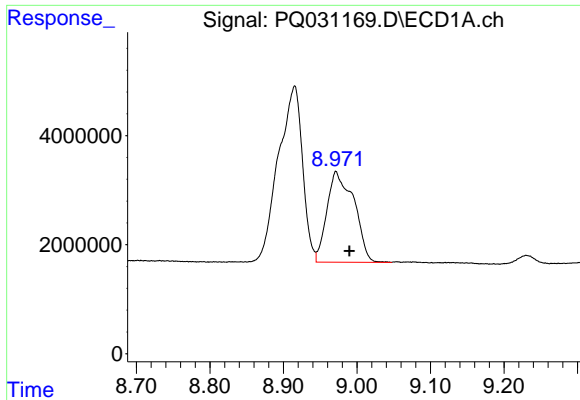
#37 AR-1262-2
 R.T.: 7.086 min
 Delta R.T.: -0.003 min
 Response: 28767376
 Conc: 300.12 ng/ml



#38 AR-1262-3
 R.T.: 8.325 min
 Delta R.T.: 0.002 min
 Response: 26847761
 Conc: 304.26 ng/ml

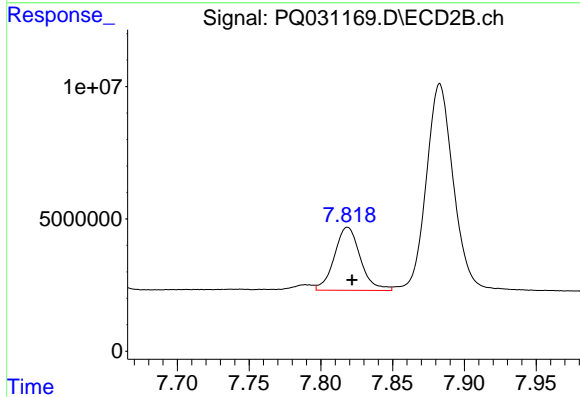


#38 AR-1262-3
 R.T.: 7.393 min
 Delta R.T.: -0.003 min
 Response: 29052925
 Conc: 301.80 ng/ml

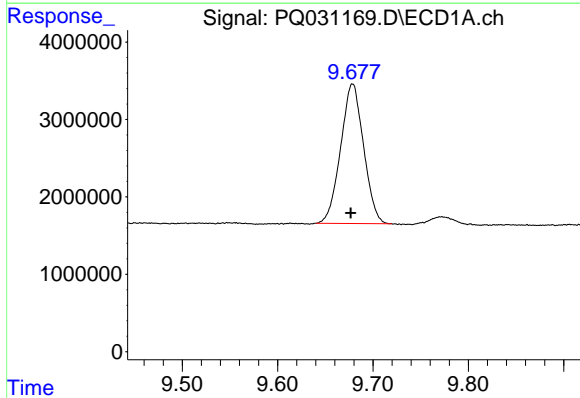


#39 AR-1262-4
R.T.: 8.971 min
Delta R.T.: -0.018 min
Response: 42489632
Conc: 281.26 ng/ml

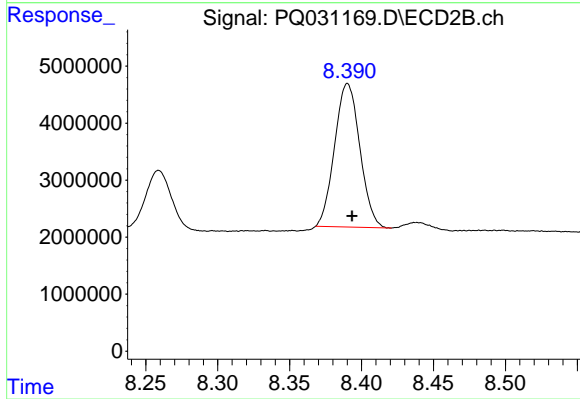
Instrument :
ECD_Q
ClientSampled :



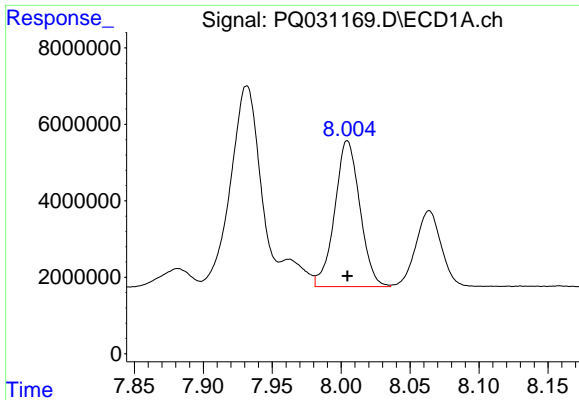
#39 AR-1262-4
R.T.: 7.819 min
Delta R.T.: -0.003 min
Response: 30114226
Conc: 177.88 ng/ml



#40 AR-1262-5
R.T.: 9.679 min
Delta R.T.: 0.002 min
Response: 30143433
Conc: 302.29 ng/ml



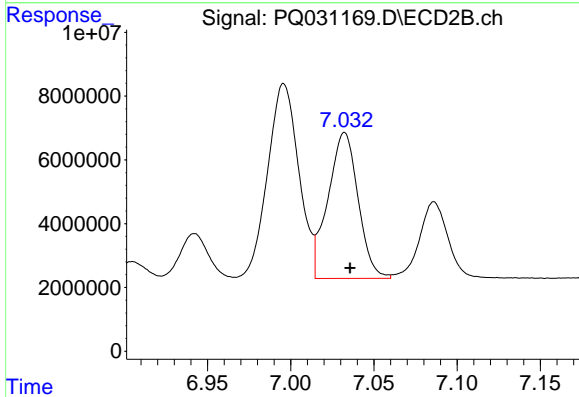
#40 AR-1262-5
R.T.: 8.390 min
Delta R.T.: -0.003 min
Response: 30801100
Conc: 269.31 ng/ml



#41 AR-1268-1

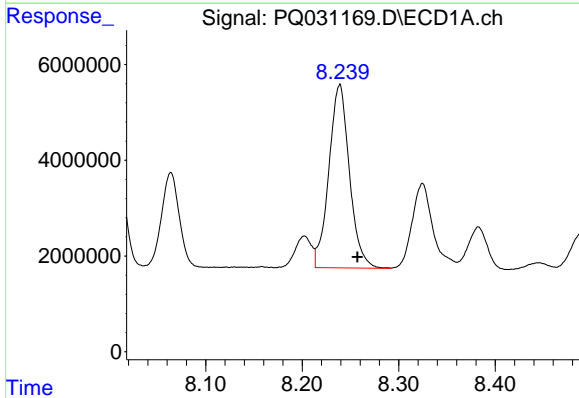
R.T.: 8.005 min
 Delta R.T.: 0.000 min
 Response: 48455514
 Conc: 661.13 ng/ml

Instrument :
 ECD_Q
 ClientSampled :



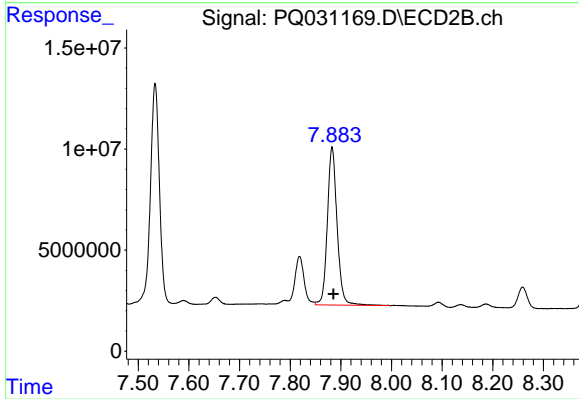
#41 AR-1268-1

R.T.: 7.032 min
 Delta R.T.: -0.003 min
 Response: 57616555
 Conc: 656.39 ng/ml



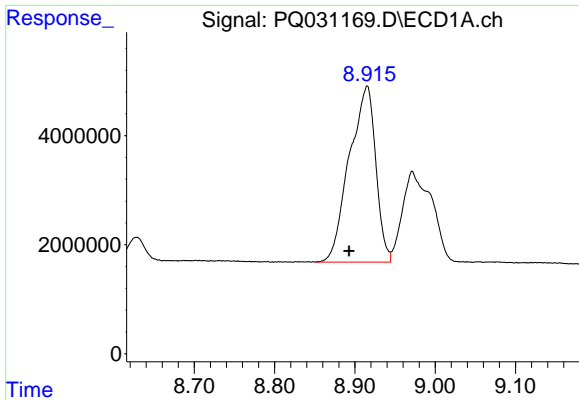
#42 AR-1268-2

R.T.: 8.239 min
 Delta R.T.: -0.018 min
 Response: 56789212
 Conc: 573.47 ng/ml



#42 AR-1268-2

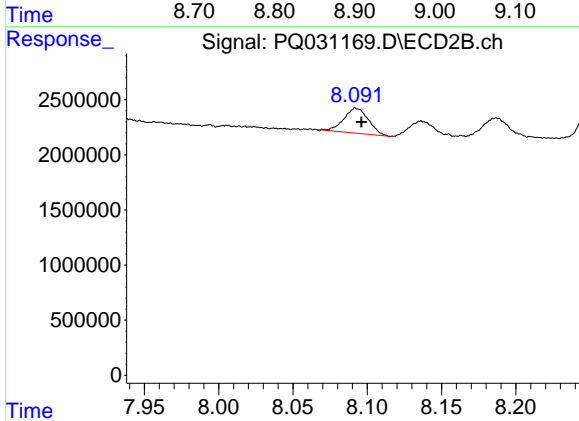
R.T.: 7.883 min
 Delta R.T.: -0.003 min
 Response: 104850092
 Conc: 219.26 ng/ml



#43 AR-1268-3

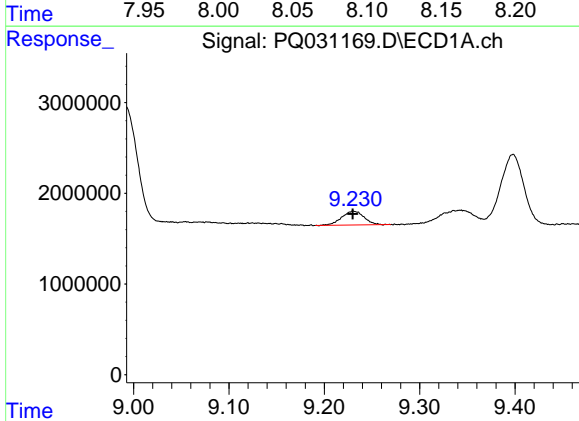
R.T.: 8.915 min
 Delta R.T.: 0.022 min
 Response: 73770842
 Conc: 174.73 ng/ml

Instrument :
 ECD_Q
 ClientSampled :



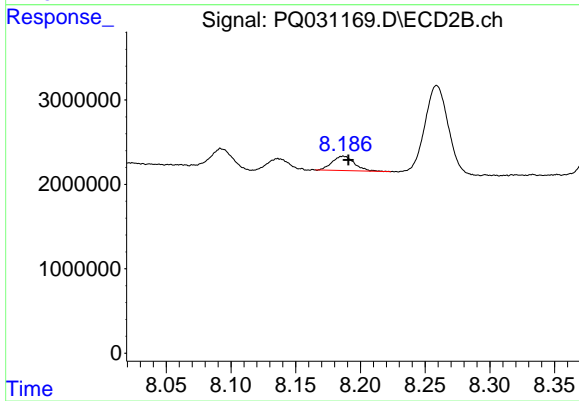
#43 AR-1268-3

R.T.: 8.092 min
 Delta R.T.: -0.004 min
 Response: 2612886
 Conc: 6.68 ng/ml



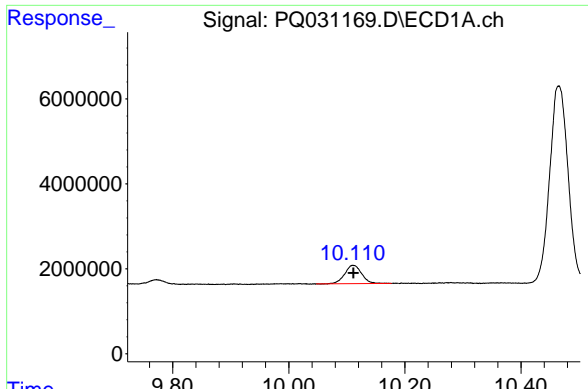
#44 AR-1268-4

R.T.: 9.230 min
 Delta R.T.: 0.000 min
 Response: 2461882
 Conc: 7.77 ng/ml



#44 AR-1268-4

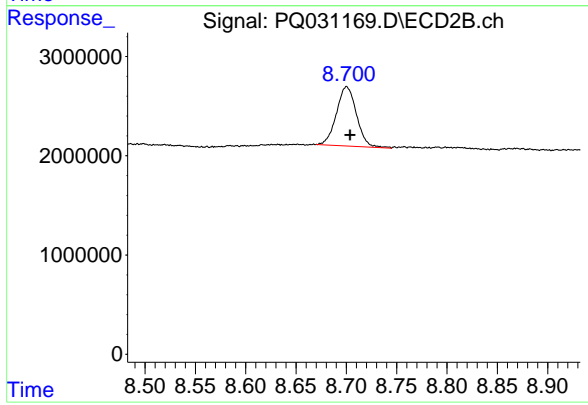
R.T.: 8.187 min
 Delta R.T.: -0.004 min
 Response: 2032256
 Conc: 20.81 ng/ml



#45 AR-1268-5

R.T.: 10.111 min
Delta R.T.: 0.000 min
Response: 8818320
Conc: 9.85 ng/ml

Instrument :
ECD_Q
ClientSampleId :



#45 AR-1268-5

R.T.: 8.700 min
Delta R.T.: -0.004 min
Response: 8290646
Conc: 7.61 ng/ml