

Data Path : Z:\pestpcbsrv\HPCHEM1\ECD_Q\Data\PQ100318\
 Data File : PQ032590.D
 Signal(s) : Signal #1: ECD1A.ch Signal #2: ECD2B.ch
 Acq On : 03 Oct 2018 16:24
 Operator : SM\SJ
 Sample : PB113369BL
 Misc :
 ALS Vial : 13 Sample Multiplier: 1

Instrument :
 ECD_Q
 ClientSampleId :

Integration File signal 1: autoint1.e
 Integration File signal 2: autoint2.e
 Quant Time: Oct 04 02:36:05 2018
 Quant Method : Z:\pestpcbsrv\HPCHEM1\ECD_Q\Method\PQ091818.M
 Quant Title : GC EXTRACTABLES
 QLast Update : Wed Sep 19 02:07:33 2018
 Response via : Initial Calibration
 Integrator: ChemStation

Volume Inj. : 2 µl
 Signal #1 Phase : ZB-MR1 Signal #2 Phase: ZB-MR2
 Signal #1 Info : 30Mx0.32mmx 0.50µ Signal #2 Info : 30M x 0.32mm x 0.25µm

Compound	RT#1	RT#2	Resp#1	Resp#2	ng/ml	ng/ml

System Monitoring Compounds						
1) SA Tetrachlo...	4.591	3.868	50334833	41461300	21.708	20.703
2) SA Decachlor...	10.442	8.938	47843983	35942465	22.951	18.562
Target Compounds						
9) L2 AR-1221-2	0.000	4.175	0	710179	N.D.	45.458 #
15) L3 AR-1232-5	0.000	6.150	0	507744	N.D.	177.942 #
34) L7 AR-1260-4	0.000	7.295	0	1608552	N.D.	16.422 #
37) L8 AR-1262-2	0.000	7.052	0	1971266	N.D.	39.071 #
41) L9 AR-1268-1	0.000	7.052	0	1971266	N.D.	39.120 #

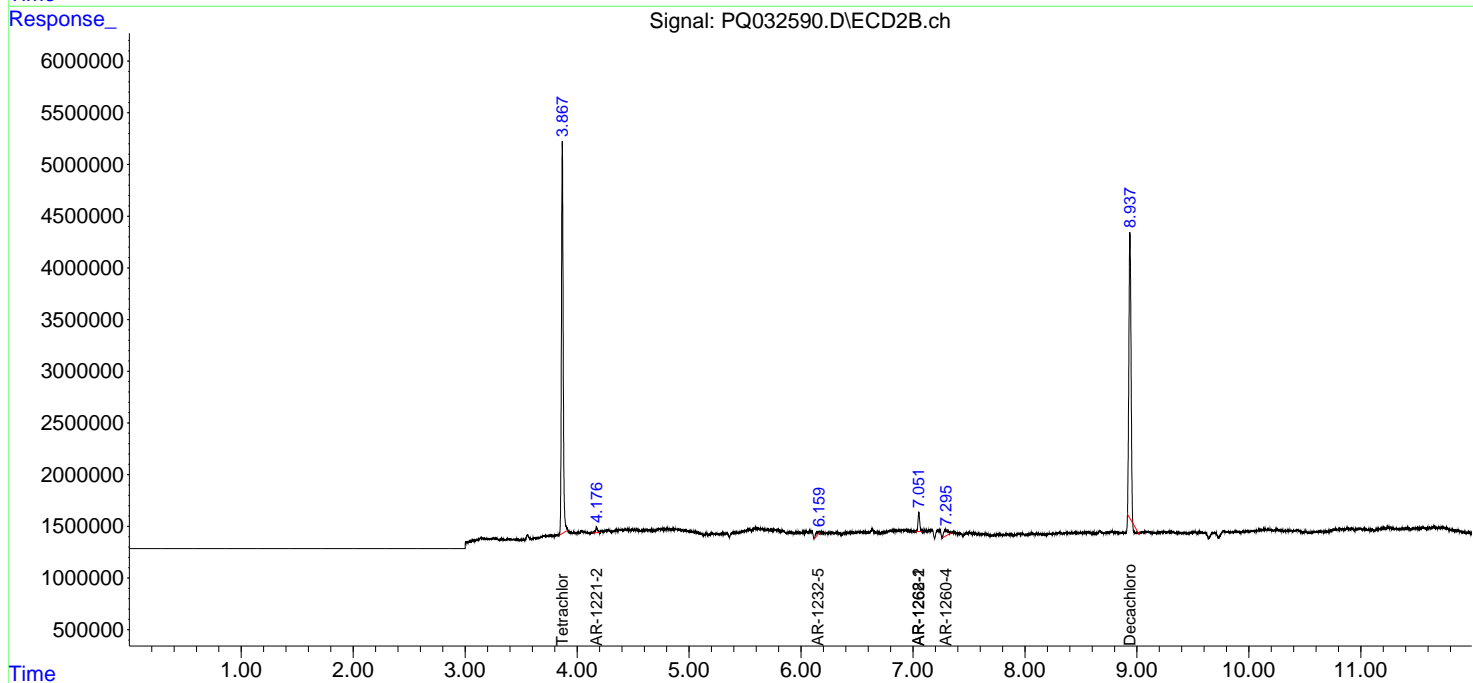
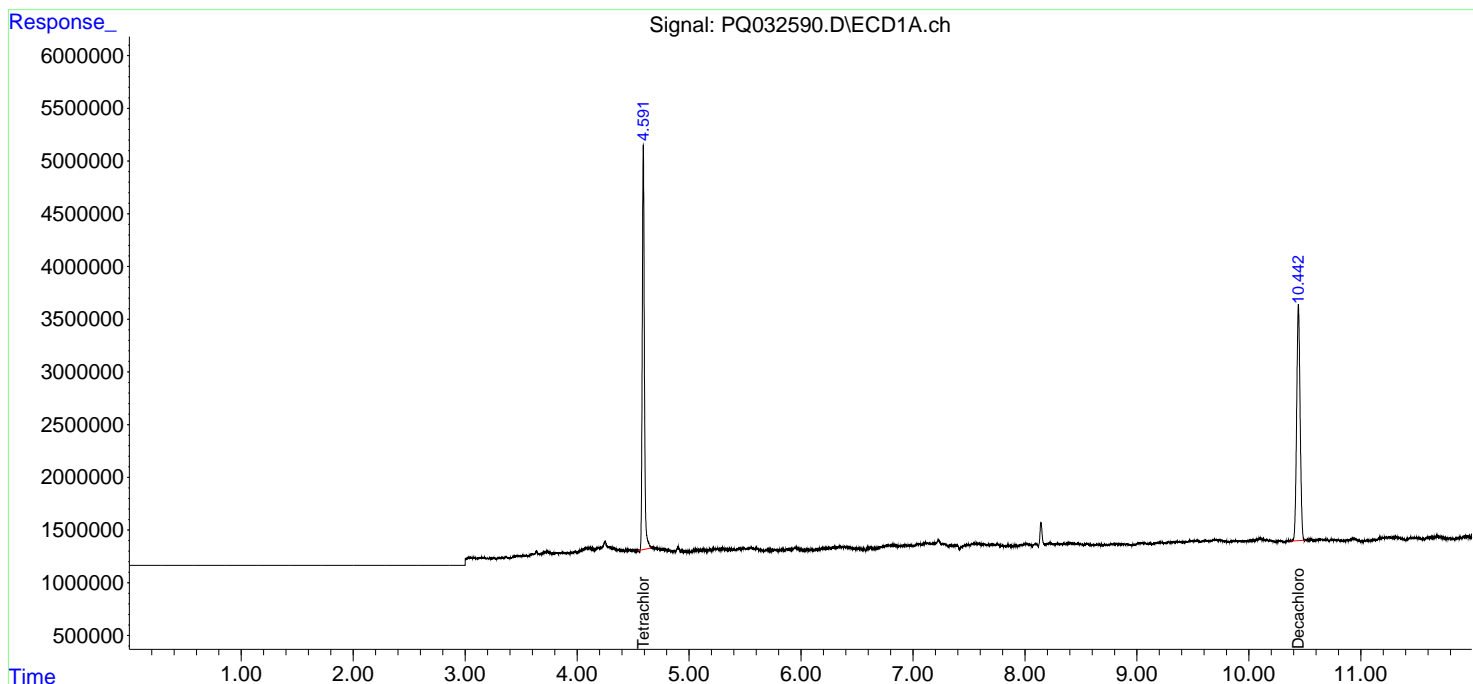
(f)=RT Delta > 1/2 Window (#)=Amounts differ by > 25% (m)=manual int.

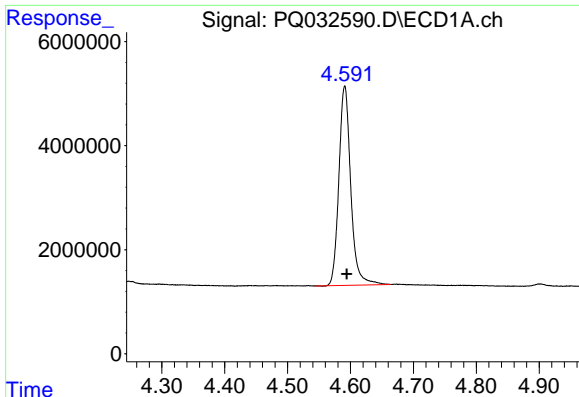
Data Path : Z:\pestpcbsrv\HPCHEM1\ECD_Q\Data\PQ100318\
 Data File : PQ032590.D
 Signal(s) : Signal #1: ECD1A.ch Signal #2: ECD2B.ch
 Acq On : 03 Oct 2018 16:24
 Operator : SM\SJ
 Sample : PB113369BL
 Misc :
 ALS Vial : 13 Sample Multiplier: 1

Instrument :
 ECD_Q
 ClientSampleId :

Integration File signal 1: autoint1.e
 Integration File signal 2: autoint2.e
 Quant Time: Oct 04 02:36:05 2018
 Quant Method : Z:\pestpcbsrv\HPCHEM1\ECD_Q\Method\PQ091818.M
 Quant Title : GC EXTRACTABLES
 QLast Update : Wed Sep 19 02:07:33 2018
 Response via : Initial Calibration
 Integrator: ChemStation

Volume Inj. : 2 µl
 Signal #1 Phase : ZB-MR1 Signal #2 Phase: ZB-MR2
 Signal #1 Info : 30Mx0.32mmx 0.50µ Signal #2 Info : 30M x 0.32mm x 0.25µm

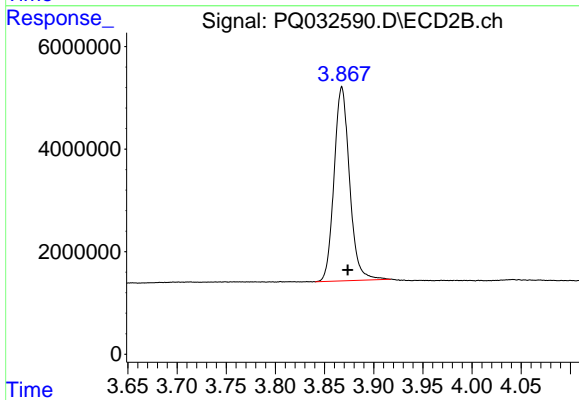




#1 Tetrachloro-m-xylene

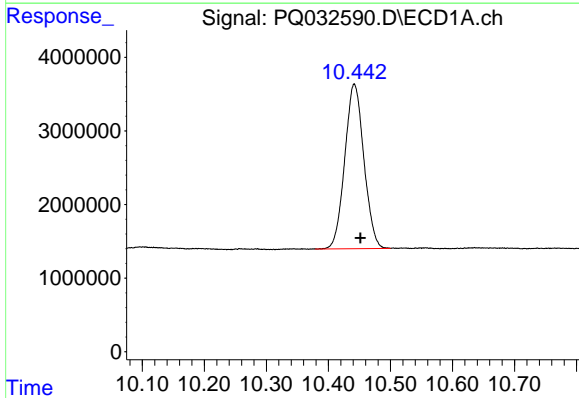
R.T.: 4.591 min
 Delta R.T.: -0.003 min
 Response: 50334833
 Conc: 21.71 ng/ml

Instrument :
 ECD_Q
 ClientSampled :



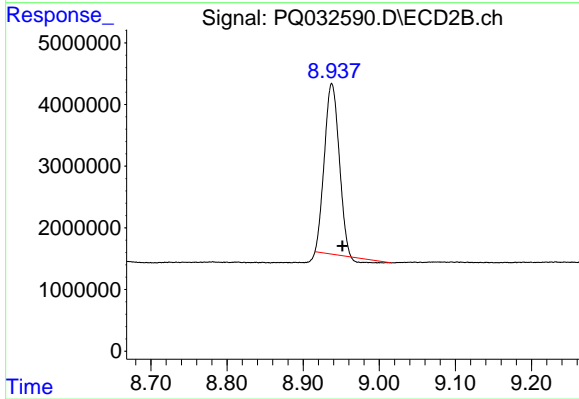
#1 Tetrachloro-m-xylene

R.T.: 3.868 min
 Delta R.T.: -0.006 min
 Response: 41461300
 Conc: 20.70 ng/ml



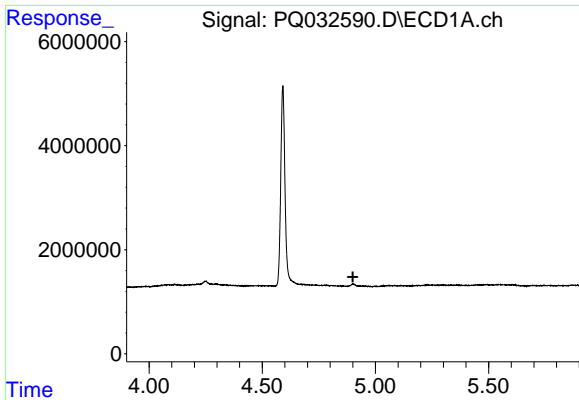
#2 Decachlorobiphenyl

R.T.: 10.442 min
 Delta R.T.: -0.010 min
 Response: 47843983
 Conc: 22.95 ng/ml



#2 Decachlorobiphenyl

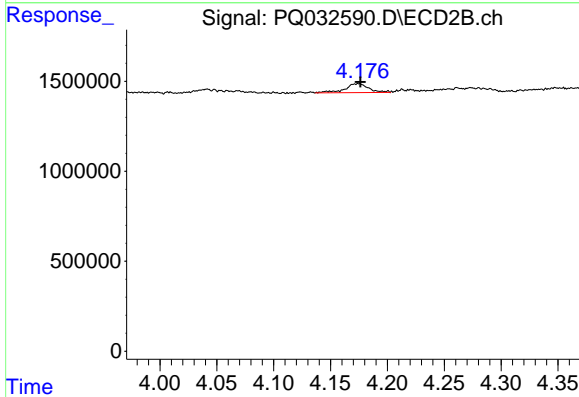
R.T.: 8.938 min
 Delta R.T.: -0.014 min
 Response: 35942465
 Conc: 18.56 ng/ml



#9 AR-1221-2

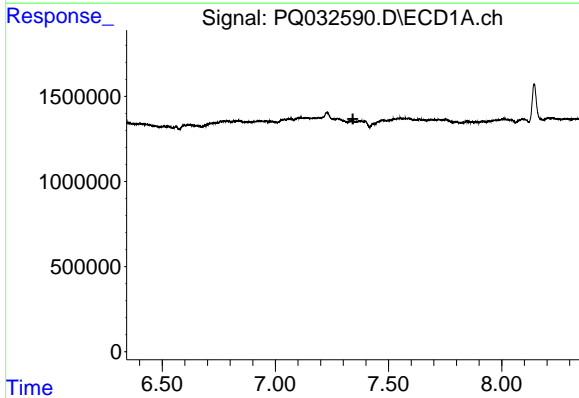
R.T.: 0.000 min
 Exp R.T.: 4.900 min
 Response: 0
 Conc: N.D.

Instrument :
 ECD_Q
 ClientSampleId :



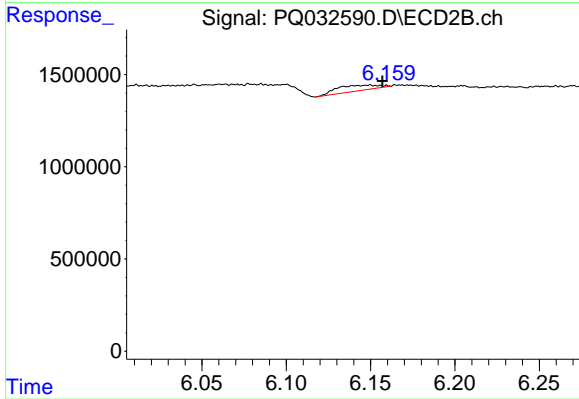
#9 AR-1221-2

R.T.: 4.175 min
 Delta R.T.: -0.001 min
 Response: 710179
 Conc: 45.46 ng/ml



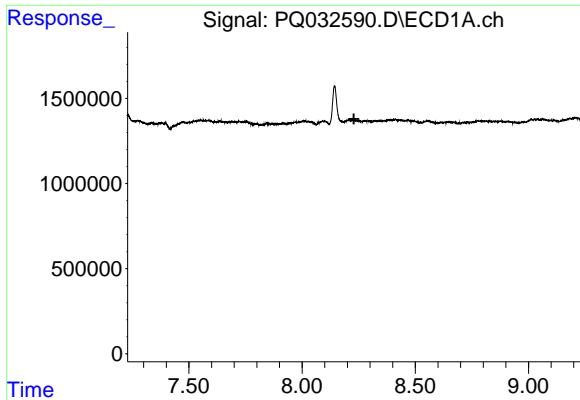
#15 AR-1232-5

R.T.: 0.000 min
 Exp R.T.: 7.343 min
 Response: 0
 Conc: N.D.



#15 AR-1232-5

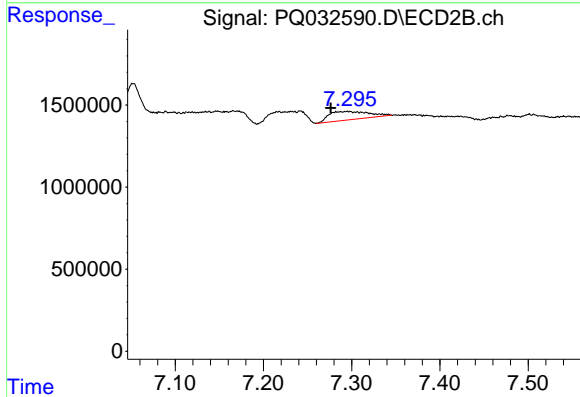
R.T.: 6.150 min
 Delta R.T.: -0.007 min
 Response: 507744
 Conc: 177.94 ng/ml



#34 AR-1260-4

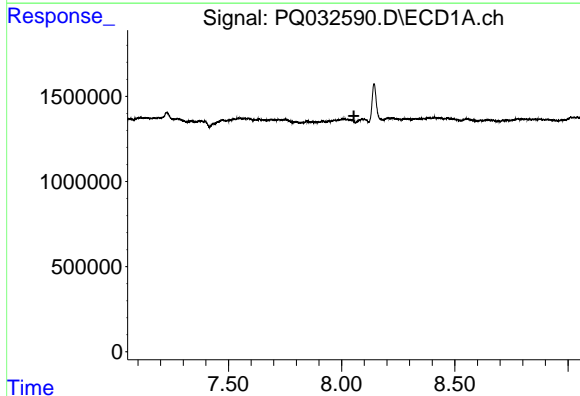
R.T.: 0.000 min
 Exp R.T. : 8.229 min
 Response: 0
 Conc: N.D.

Instrument :
 ECD_Q
 ClientSampled :



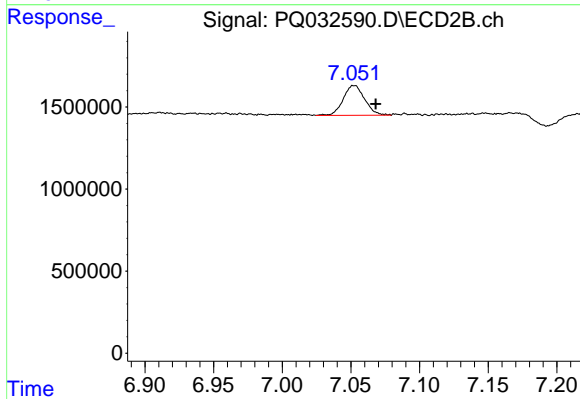
#34 AR-1260-4

R.T.: 7.295 min
 Delta R.T.: 0.019 min
 Response: 1608552
 Conc: 16.42 ng/ml



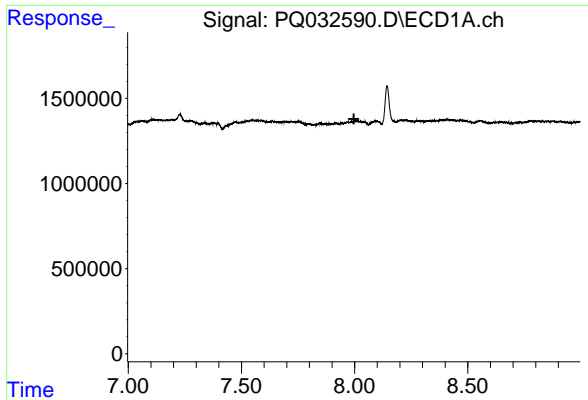
#37 AR-1262-2

R.T.: 0.000 min
 Exp R.T. : 8.054 min
 Response: 0
 Conc: N.D.



#37 AR-1262-2

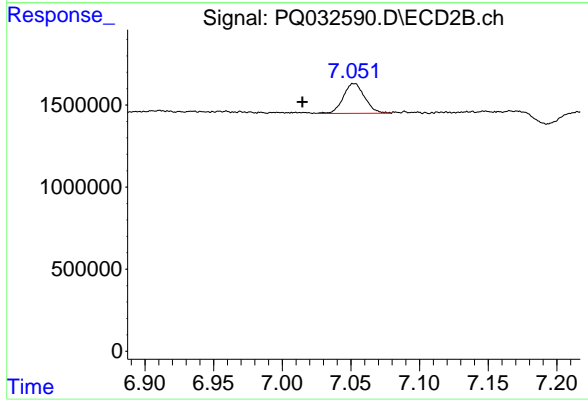
R.T.: 7.052 min
 Delta R.T.: -0.016 min
 Response: 1971266
 Conc: 39.07 ng/ml



#41 AR-1268-1

R.T.: 0.000 min
Exp R.T.: 7.997 min
Response: 0
Conc: N.D.

Instrument :
ECD_Q
ClientSampleId :



#41 AR-1268-1

R.T.: 7.052 min
Delta R.T.: 0.038 min
Response: 1971266
Conc: 39.12 ng/ml