

Data Path : Z:\pestpcbsrv\HPCHEM1\ECD_Q\Data\PQ100318\
 Data File : PQ032608.D
 Signal(s) : Signal #1: ECD1A.ch Signal #2: ECD2B.ch
 Acq On : 03 Oct 2018 20:44
 Operator : SM\SJ
 Sample : J5221-11
 Misc :
 ALS Vial : 29 Sample Multiplier: 1

Instrument :
 ECD_Q
 ClientSampled :

Integration File signal 1: autoint1.e
 Integration File signal 2: autoint2.e
 Quant Time: Oct 04 02:51:22 2018
 Quant Method : Z:\pestpcbsrv\HPCHEM1\ECD_Q\Method\PQ091818.M
 Quant Title : GC EXTRACTABLES
 QLast Update : Wed Sep 19 02:07:33 2018
 Response via : Initial Calibration
 Integrator: ChemStation

Volume Inj. : 2 µl
 Signal #1 Phase : ZB-MR1 Signal #2 Phase: ZB-MR2
 Signal #1 Info : 30Mx0.32mmx 0.50µ Signal #2 Info : 30M x 0.32mm x 0.25µm

Compound	RT#1	RT#2	Resp#1	Resp#2	ng/ml	ng/ml
System Monitoring Compounds						
1) SA Tetrachlo...	4.590	3.868	37329714	28947758	16.099	14.454
2) SA Decachlor...	10.441	8.936	30653505	23551885	14.704	12.163
Target Compounds						
3) L1 AR-1016-1	0.000	4.611	0	2614681	N.D.	54.190 #
4) L1 AR-1016-2	5.537	4.969	1042142	410266	19.873	6.080 #
5) L1 AR-1016-3	0.000	4.984	0	1224517	N.D.	13.106 #
6) L1 AR-1016-4	5.921	4.984	1873382	1224517	27.444	20.625
7) L1 AR-1016-5	0.000	5.417	0	1036997	N.D.	19.842 #
8) L2 AR-1221-1	4.876	4.107	3572138	553079	151.494	27.282 #
9) L2 AR-1221-2	4.876	4.171	3572138	1817869	203.511	116.360 #
10) L2 AR-1221-3	4.981	4.258	4854637	1569017	87.654	32.039 #
11) L3 AR-1232-1	0.000	4.777	0	2425585	N.D.	139.160 #
12) L3 AR-1232-2	5.921	4.867	1873382	3124876	90.560	619.323 #
13) L3 AR-1232-3	6.068	5.278	3366853	1294383	584.235	82.524 #
14) L3 AR-1232-4	6.433	5.576	4525567	1247821	938.200	67.569 #
15) L3 AR-1232-5	0.000	6.159	0	2603611	N.D.	912.453 #
16) L4 AR-1242-1	0.000	4.611	0	2614681	N.D.	131.537 #
17) L4 AR-1242-2	6.068	5.164	3366853	2425078	92.737	67.597 #
18) L4 AR-1242-3	0.000	5.278	0	1294383	N.D.	109.942 #
19) L4 AR-1242-4	0.000	5.606	0	459031	N.D.	44.021 #
20) L4 AR-1242-5	6.433	6.041	4525567	1887793	99.597	79.532
21) L5 AR-1248-1	6.068	5.202	3366853	629432	58.177	12.798 #
22) L5 AR-1248-2	0.000	5.748	0	1619068	N.D.	17.711 #
23) L5 AR-1248-3	0.000	5.821	0	538067	N.D.	8.507 #
24) L5 AR-1248-4	0.000	6.041	0	1887793	N.D.	34.603 #
25) L5 AR-1248-5	6.867	0.000	2925193	0	63.952	N.D. #
26) L6 AR-1254-1	6.867	0.000	2925193	0	17.641	N.D. #
27) L6 AR-1254-2	0.000	6.235	0	2220543	N.D.	22.468 #
29) L6 AR-1254-4	0.000	6.852	0	2082888	N.D.	23.680 #
30) L6 AR-1254-5	0.000	6.959	0	480740	N.D.	2.768 #
32) L7 AR-1260-2	7.690	6.635	1436595	999906	10.705	7.731 #
33) L7 AR-1260-3	0.000	6.765	0	281837	N.D.	2.336 #
34) L7 AR-1260-4	8.205	0.000	1823326	0	15.961	N.D. #
35) L7 AR-1260-5	0.000	7.542	0	751752	N.D.	3.148 #
38) L8 AR-1262-3	0.000	7.436	0	2064090	N.D.	37.787 #
39) L8 AR-1262-4	0.000	7.816	0	382164	N.D.	4.276 #
41) L9 AR-1268-1	0.000	6.959	0	480740	N.D.	9.540 #
42) L9 AR-1268-2	8.205	7.816	1823326	382164	26.773	1.440 #
43) L9 AR-1268-3	0.000	8.106	0	1592126	N.D.	7.288 #
44) L9 AR-1268-4	0.000	8.106	0	1592126	N.D.	27.715 #

Data Path : Z:\pestpcbsrv\HPCHEM1\ECD_Q\Data\PQ100318\
Data File : PQ032608.D
Signal(s) : Signal #1: ECD1A.ch Signal #2: ECD2B.ch
Acq On : 03 Oct 2018 20:44
Operator : SM\SJ
Sample : J5221-11
Misc :
ALS Vial : 29 Sample Multiplier: 1

Instrument :
ECD_Q
ClientSampleId :

Integration File signal 1: autoint1.e
Integration File signal 2: autoint2.e
Quant Time: Oct 04 02:51:22 2018
Quant Method : Z:\pestpcbsrv\HPCHEM1\ECD_Q\Method\PQ091818.M
Quant Title : GC EXTRACTABLES
QLast Update : Wed Sep 19 02:07:33 2018
Response via : Initial Calibration
Integrator: ChemStation

Volume Inj. : 2 µl
Signal #1 Phase : ZB-MR1 Signal #2 Phase: ZB-MR2
Signal #1 Info : 30Mx0.32mmx 0.50µ Signal #2 Info : 30M x 0.32mm x 0.25µm

Compound	RT#1	RT#2	Resp#1	Resp#2	ng/ml	ng/ml
----------	------	------	--------	--------	-------	-------

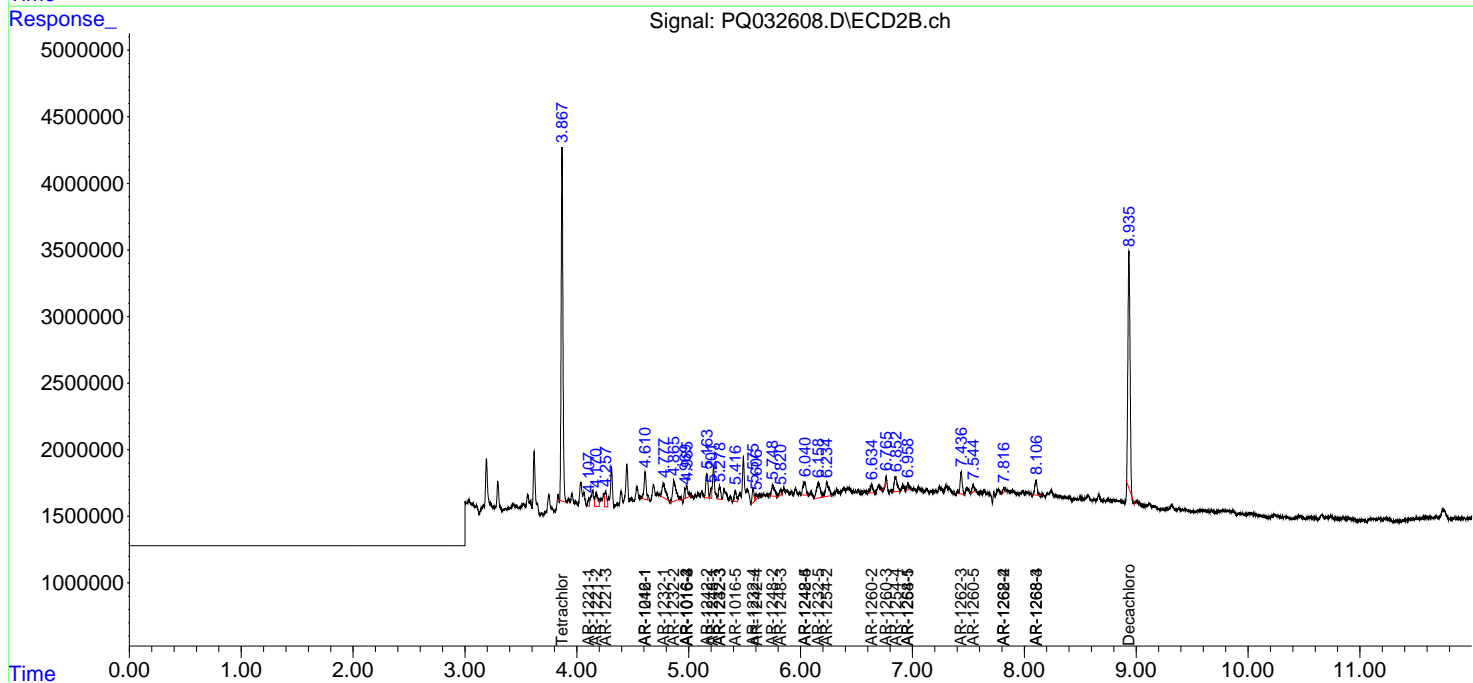
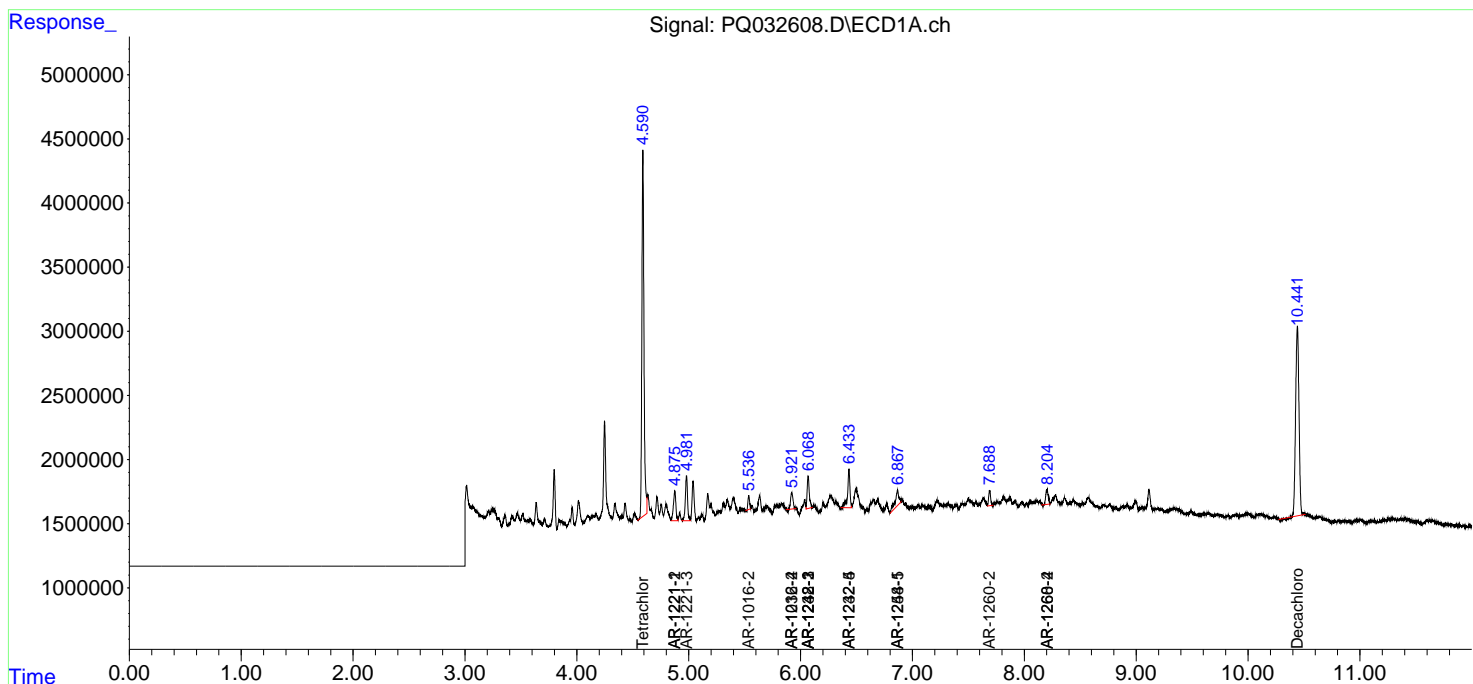
(f)=RT Delta > 1/2 Window (#)=Amounts differ by > 25% (m)=manual int.

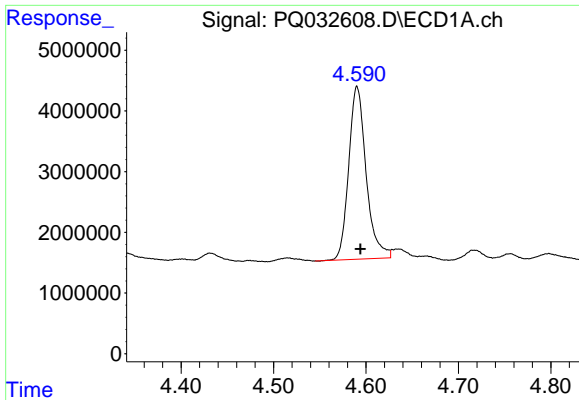
Data Path : Z:\pestpcbsrv\HPCHEM1\ECD_Q\Data\PQ100318\
 Data File : PQ032608.D
 Signal(s) : Signal #1: ECD1A.ch Signal #2: ECD2B.ch
 Acq On : 03 Oct 2018 20:44
 Operator : SM\SJ
 Sample : J5221-11
 Misc :
 ALS Vial : 29 Sample Multiplier: 1

Instrument :
 ECD_Q
 ClientSampled :

Integration File signal 1: autoint1.e
 Integration File signal 2: autoint2.e
 Quant Time: Oct 04 02:51:22 2018
 Quant Method : Z:\pestpcbsrv\HPCHEM1\ECD_Q\Method\PQ091818.M
 Quant Title : GC EXTRACTABLES
 QLast Update : Wed Sep 19 02:07:33 2018
 Response via : Initial Calibration
 Integrator: ChemStation

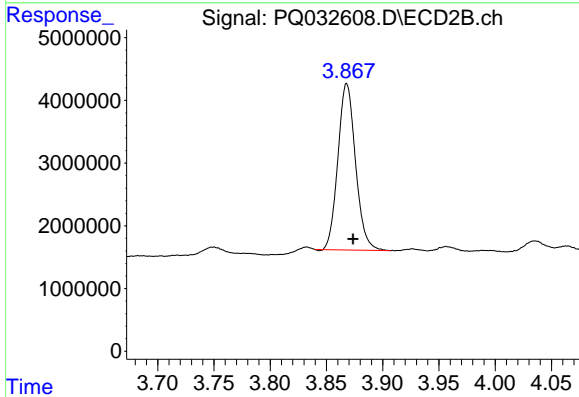
Volume Inj. : 2 µl
 Signal #1 Phase : ZB-MR1 Signal #2 Phase: ZB-MR2
 Signal #1 Info : 30Mx0.32mmx 0.50µ Signal #2 Info : 30M x 0.32mm x 0.25µm



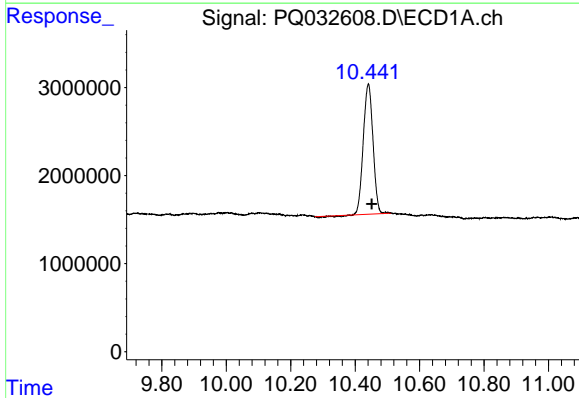


#1 Tetrachloro-m-xylene
 R.T.: 4.590 min
 Delta R.T.: -0.004 min
 Response: 37329714
 Conc: 16.10 ng/ml

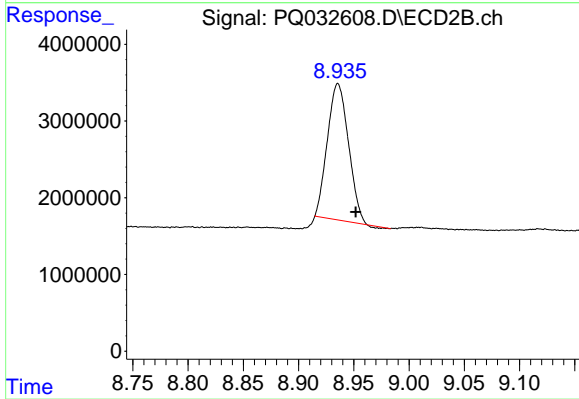
Instrument :
 ECD_Q
 ClientSampleId :



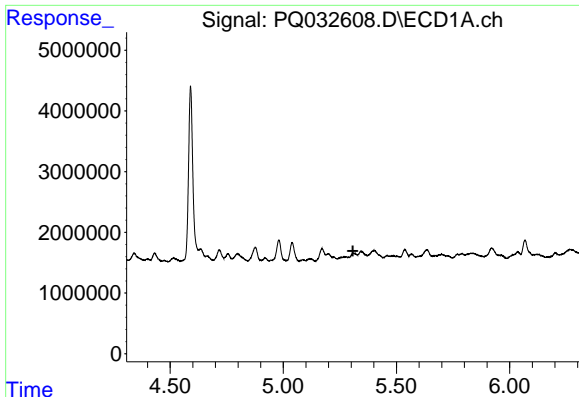
#1 Tetrachloro-m-xylene
 R.T.: 3.868 min
 Delta R.T.: -0.006 min
 Response: 28947758
 Conc: 14.45 ng/ml



#2 Decachlorobiphenyl
 R.T.: 10.441 min
 Delta R.T.: -0.010 min
 Response: 30653505
 Conc: 14.70 ng/ml



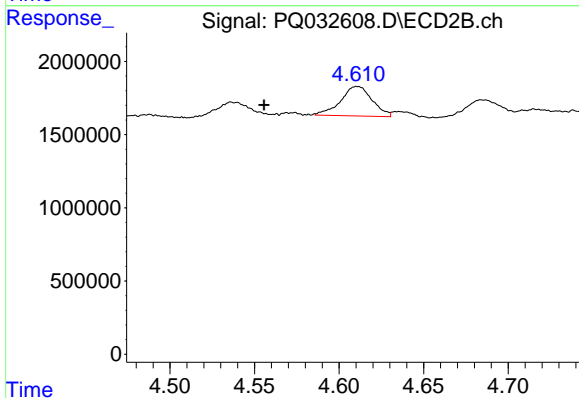
#2 Decachlorobiphenyl
 R.T.: 8.936 min
 Delta R.T.: -0.016 min
 Response: 23551885
 Conc: 12.16 ng/ml



#3 AR-1016-1

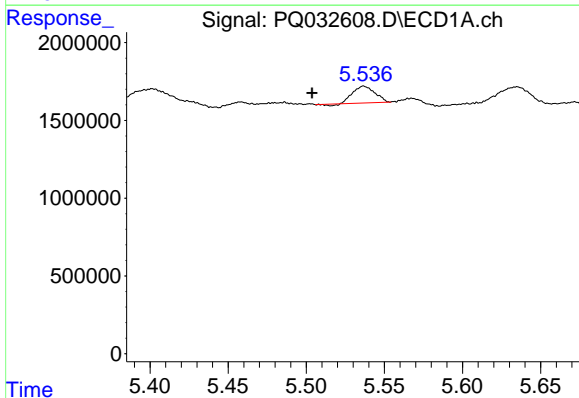
R.T.: 0.000 min
 Exp R.T.: 5.307 min
 Response: 0
 Conc: N.D.

Instrument :
 ECD_Q
 ClientSampled :



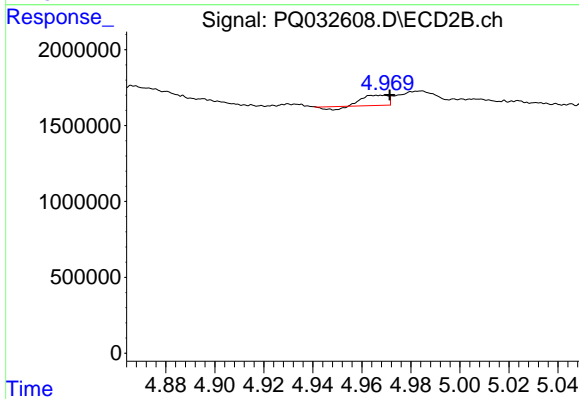
#3 AR-1016-1

R.T.: 4.611 min
 Delta R.T.: 0.055 min
 Response: 2614681
 Conc: 54.19 ng/ml



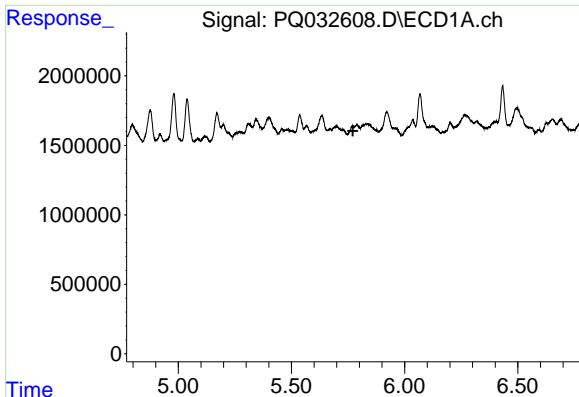
#4 AR-1016-2

R.T.: 5.537 min
 Delta R.T.: 0.033 min
 Response: 1042142
 Conc: 19.87 ng/ml



#4 AR-1016-2

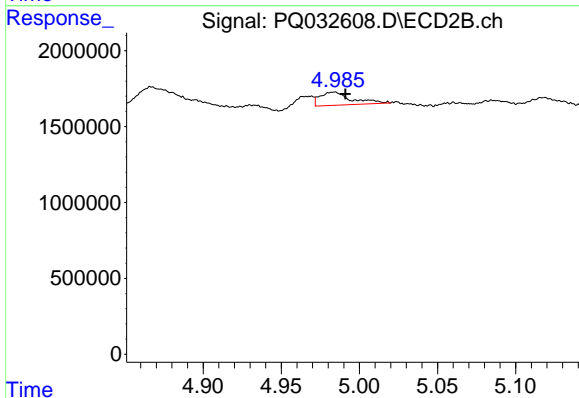
R.T.: 4.969 min
 Delta R.T.: -0.002 min
 Response: 410266
 Conc: 6.08 ng/ml



#5 AR-1016-3

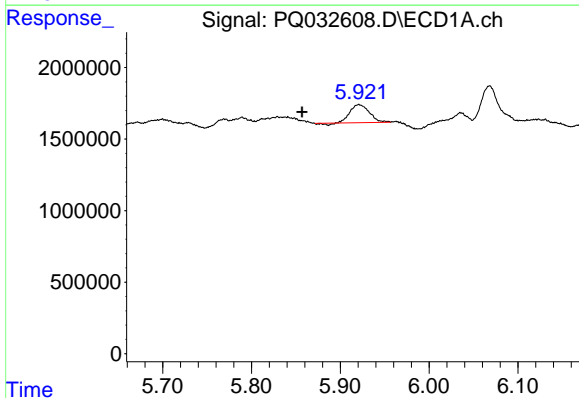
R.T.: 0.000 min
 Exp R.T.: 5.772 min
 Response: 0
 Conc: N.D.

Instrument :
 ECD_Q
 ClientSampled :



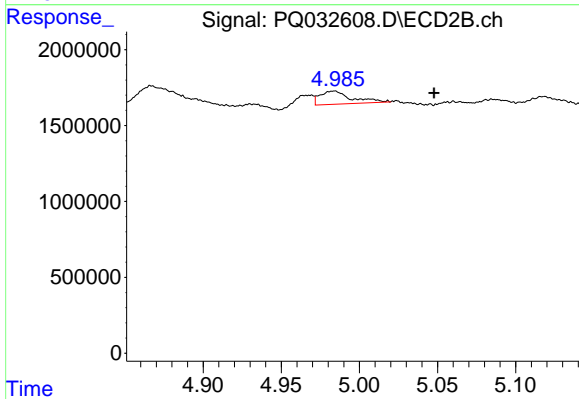
#5 AR-1016-3

R.T.: 4.984 min
 Delta R.T.: -0.007 min
 Response: 1224517
 Conc: 13.11 ng/ml



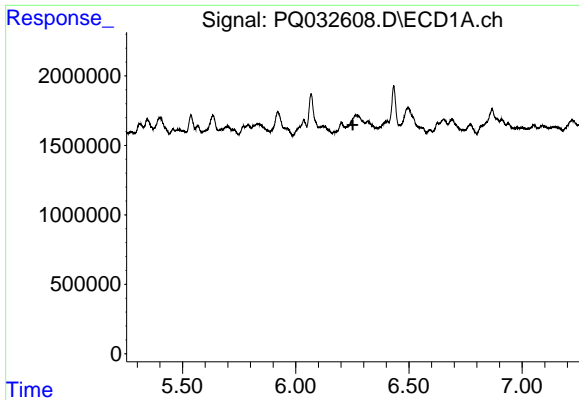
#6 AR-1016-4

R.T.: 5.921 min
 Delta R.T.: 0.064 min
 Response: 1873382
 Conc: 27.44 ng/ml



#6 AR-1016-4

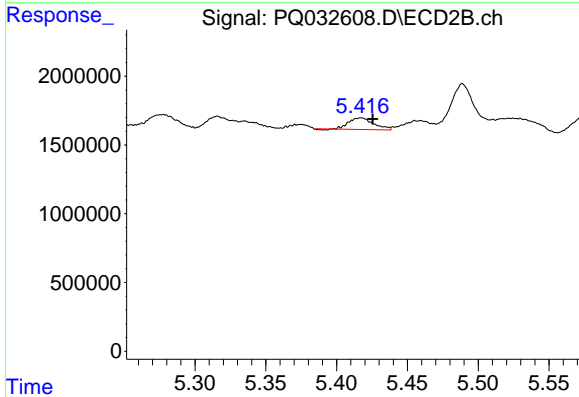
R.T.: 4.984 min
 Delta R.T.: -0.064 min
 Response: 1224517
 Conc: 20.62 ng/ml



#7 AR-1016-5

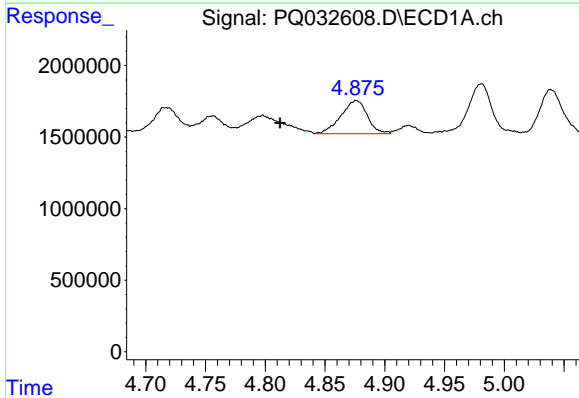
R.T.: 0.000 min
 Exp R.T.: 6.252 min
 Response: 0
 Conc: N.D.

Instrument :
 ECD_Q
 ClientSampled :



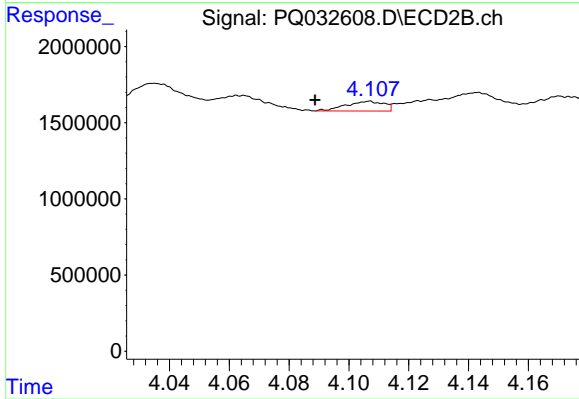
#7 AR-1016-5

R.T.: 5.417 min
 Delta R.T.: -0.008 min
 Response: 1036997
 Conc: 19.84 ng/ml



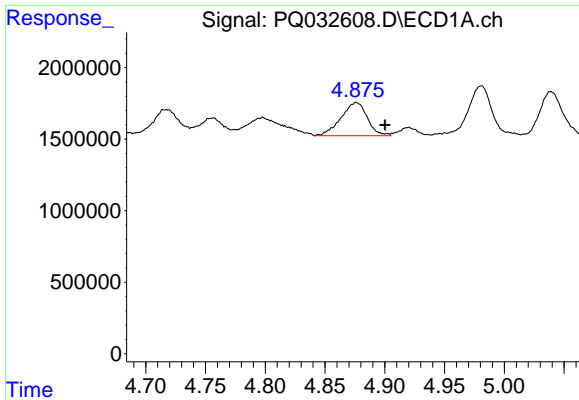
#8 AR-1221-1

R.T.: 4.876 min
 Delta R.T.: 0.064 min
 Response: 3572138
 Conc: 151.49 ng/ml



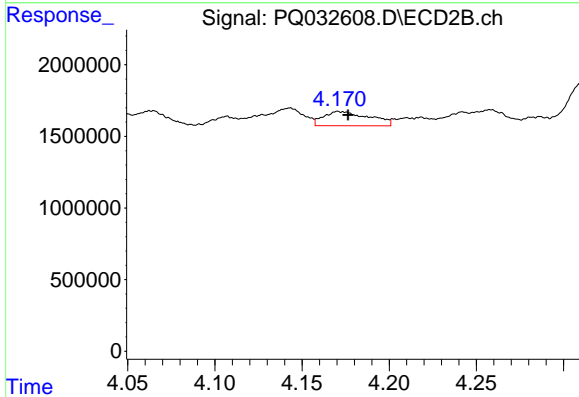
#8 AR-1221-1

R.T.: 4.107 min
 Delta R.T.: 0.018 min
 Response: 553079
 Conc: 27.28 ng/ml

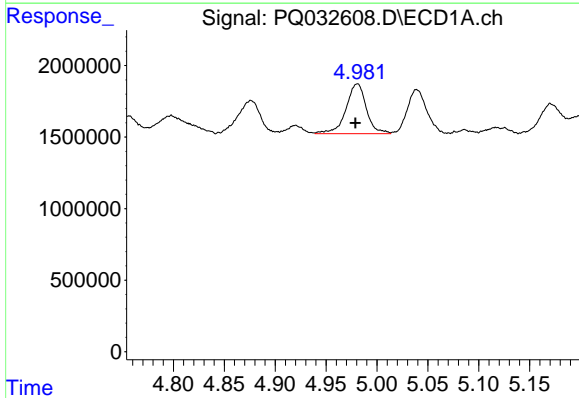


#9 AR-1221-2
 R.T.: 4.876 min
 Delta R.T.: -0.024 min
 Response: 3572138
 Conc: 203.51 ng/ml

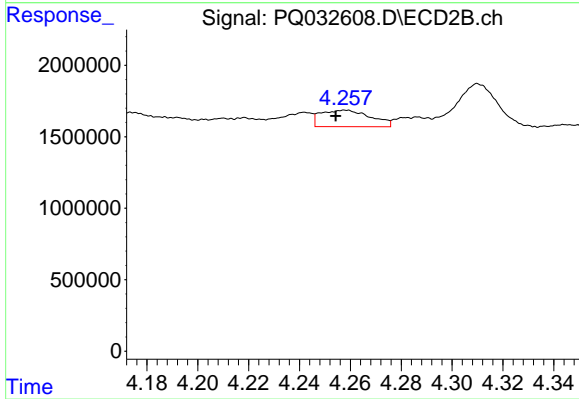
Instrument :
 ECD_Q
 ClientSampleId :



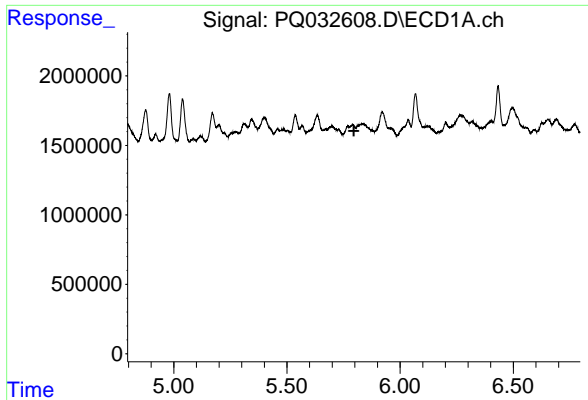
#9 AR-1221-2
 R.T.: 4.171 min
 Delta R.T.: -0.006 min
 Response: 1817869
 Conc: 116.36 ng/ml



#10 AR-1221-3
 R.T.: 4.981 min
 Delta R.T.: 0.002 min
 Response: 4854637
 Conc: 87.65 ng/ml



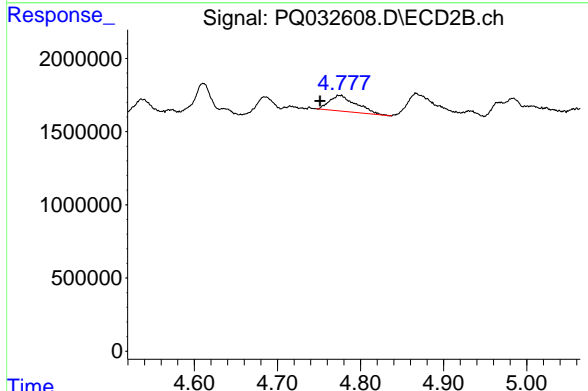
#10 AR-1221-3
 R.T.: 4.258 min
 Delta R.T.: 0.004 min
 Response: 1569017
 Conc: 32.04 ng/ml



#11 AR-1232-1

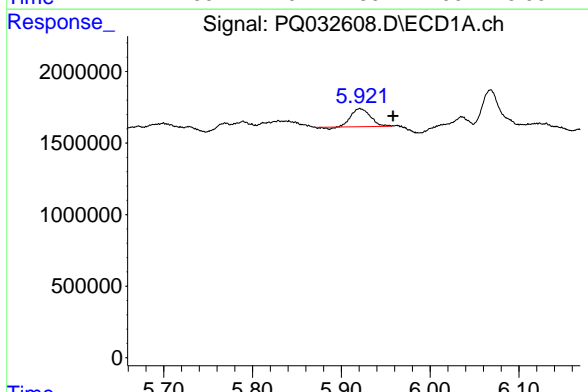
R.T.: 0.000 min
 Exp R.T.: 5.796 min
 Response: 0
 Conc: N.D.

Instrument :
 ECD_Q
 ClientSampled :



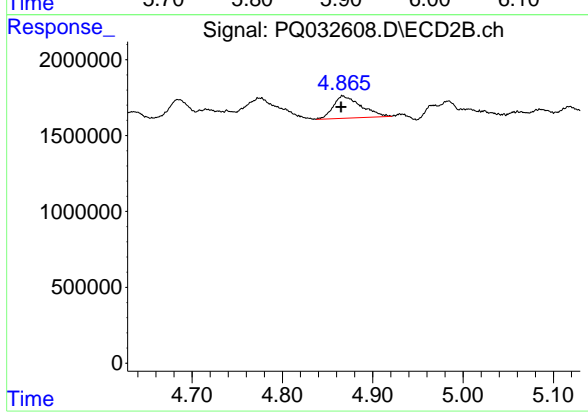
#11 AR-1232-1

R.T.: 4.777 min
 Delta R.T.: 0.026 min
 Response: 2425585
 Conc: 139.16 ng/ml



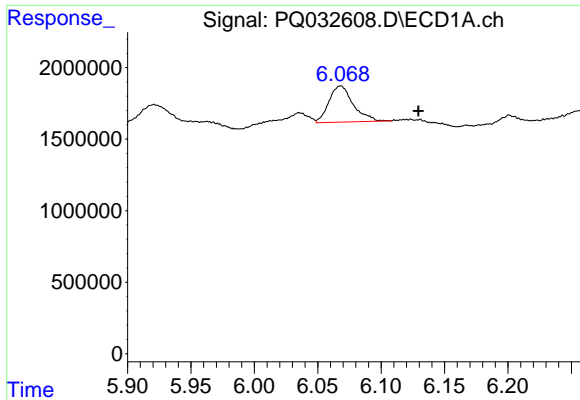
#12 AR-1232-2

R.T.: 5.921 min
 Delta R.T.: -0.038 min
 Response: 1873382
 Conc: 90.56 ng/ml



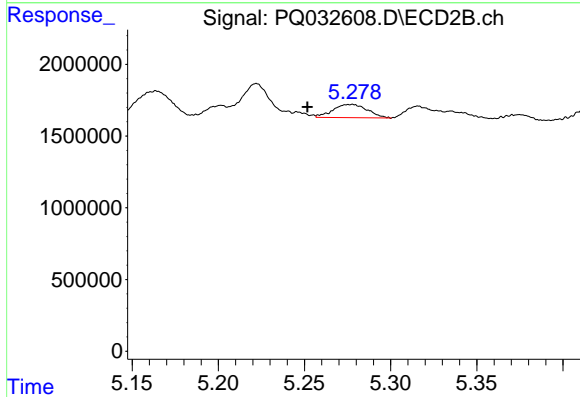
#12 AR-1232-2

R.T.: 4.867 min
 Delta R.T.: 0.002 min
 Response: 3124876
 Conc: 619.32 ng/ml

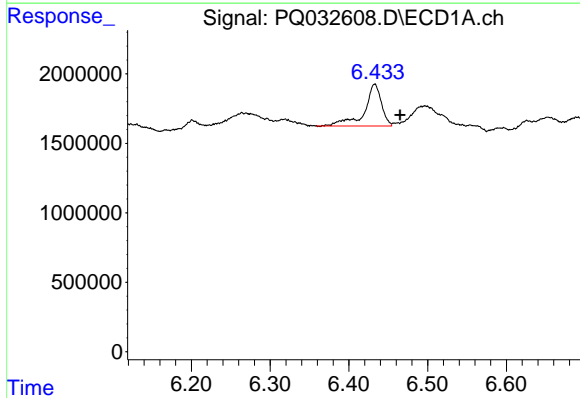


#13 AR-1232-3
 R.T.: 6.068 min
 Delta R.T.: -0.061 min
 Response: 3366853
 Conc: 584.23 ng/ml

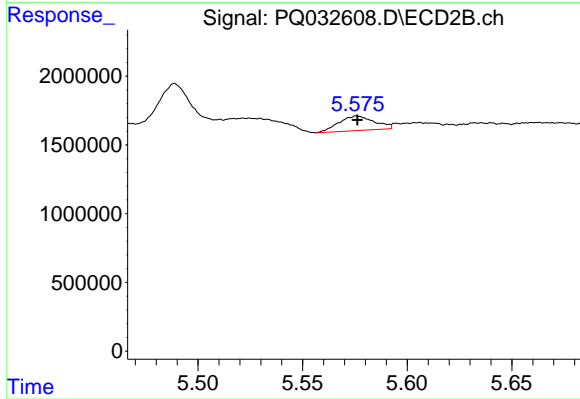
Instrument :
 ECD_Q
 ClientSampled :



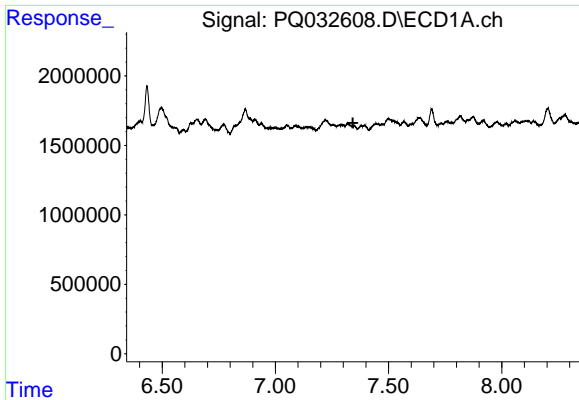
#13 AR-1232-3
 R.T.: 5.278 min
 Delta R.T.: 0.026 min
 Response: 1294383
 Conc: 82.52 ng/ml



#14 AR-1232-4
 R.T.: 6.433 min
 Delta R.T.: -0.032 min
 Response: 4525567
 Conc: 938.20 ng/ml



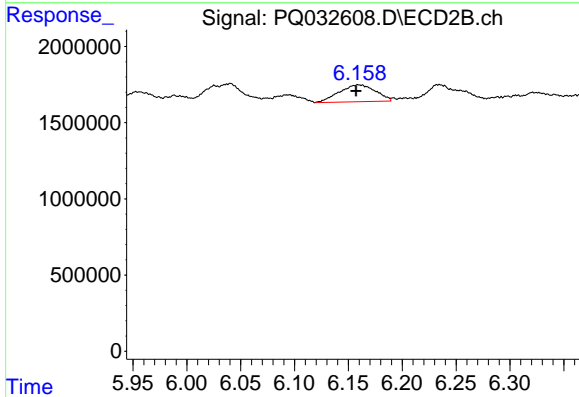
#14 AR-1232-4
 R.T.: 5.576 min
 Delta R.T.: 0.000 min
 Response: 1247821
 Conc: 67.57 ng/ml



#15 AR-1232-5

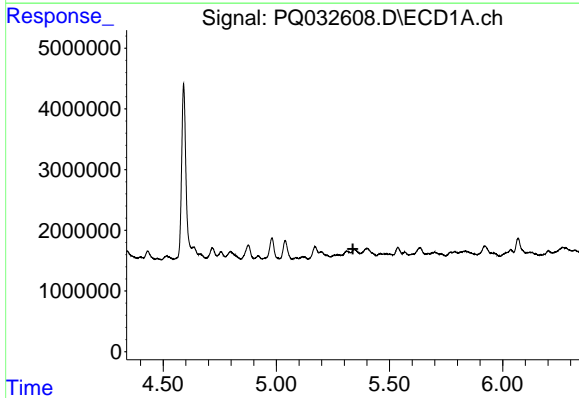
R.T.: 0.000 min
 Exp R.T. : 7.343 min
 Response: 0
 Conc: N.D.

Instrument :
 ECD_Q
 ClientSampled :



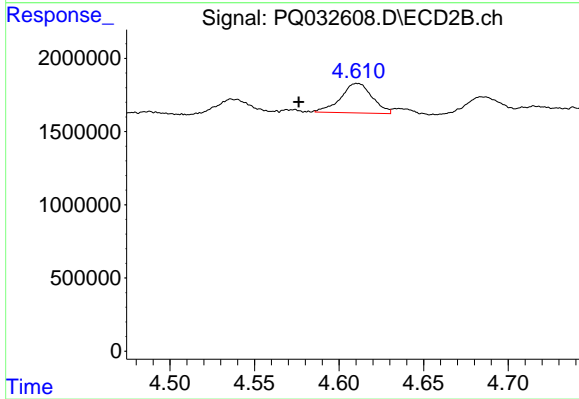
#15 AR-1232-5

R.T.: 6.159 min
 Delta R.T.: 0.002 min
 Response: 2603611
 Conc: 912.45 ng/ml



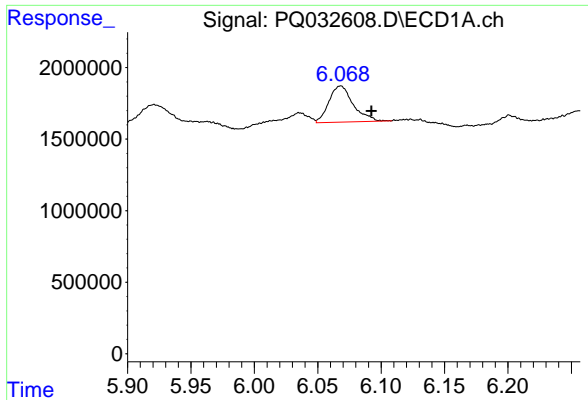
#16 AR-1242-1

R.T.: 0.000 min
 Exp R.T. : 5.338 min
 Response: 0
 Conc: N.D.



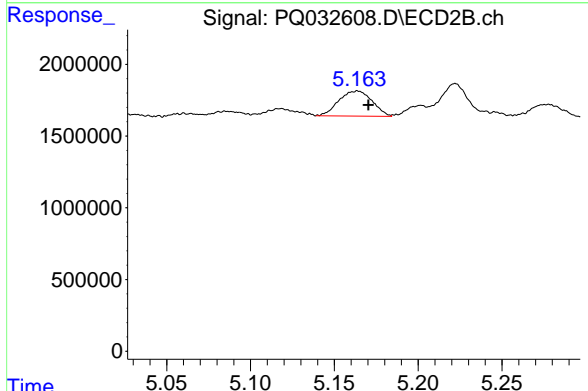
#16 AR-1242-1

R.T.: 4.611 min
 Delta R.T.: 0.035 min
 Response: 2614681
 Conc: 131.54 ng/ml

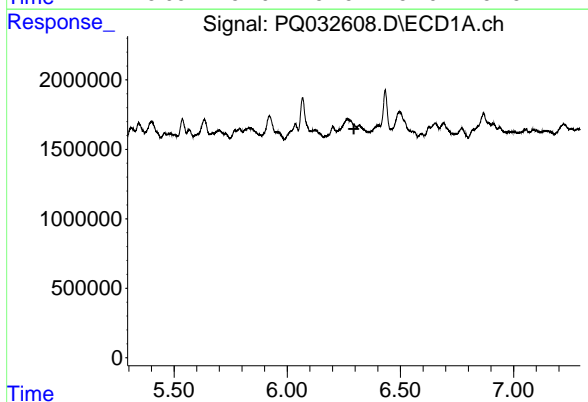


#17 AR-1242-2
 R.T.: 6.068 min
 Delta R.T.: -0.024 min
 Response: 3366853
 Conc: 92.74 ng/ml

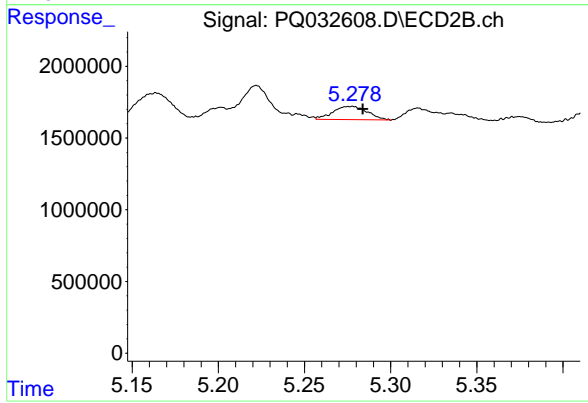
Instrument :
 ECD_Q
 ClientSampleId :



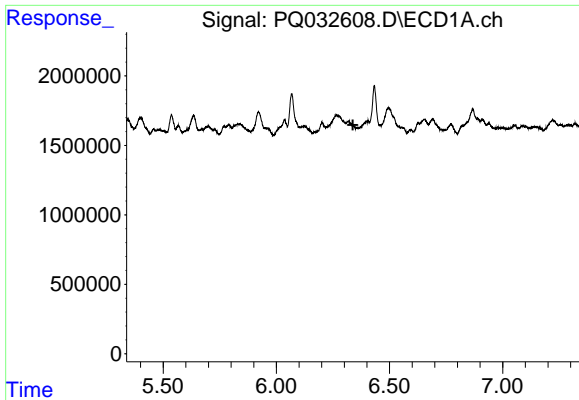
#17 AR-1242-2
 R.T.: 5.164 min
 Delta R.T.: -0.006 min
 Response: 2425078
 Conc: 67.60 ng/ml



#18 AR-1242-3
 R.T.: 0.000 min
 Exp R.T. : 6.294 min
 Response: 0
 Conc: N.D.



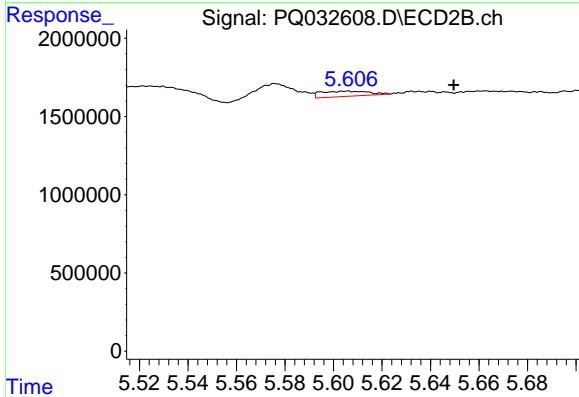
#18 AR-1242-3
 R.T.: 5.278 min
 Delta R.T.: -0.006 min
 Response: 1294383
 Conc: 109.94 ng/ml



#19 AR-1242-4

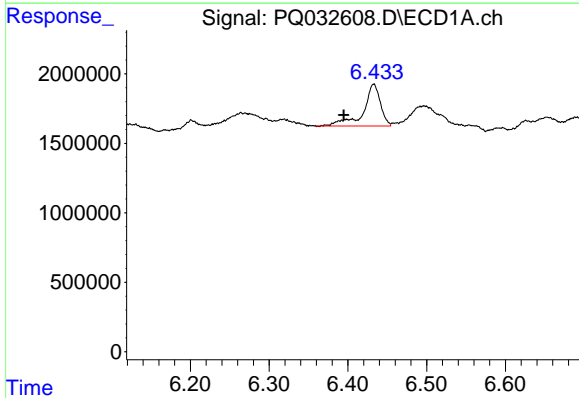
R.T.: 0.000 min
 Exp R.T.: 6.338 min
 Response: 0
 Conc: N.D.

Instrument :
 ECD_Q
 ClientSampled :



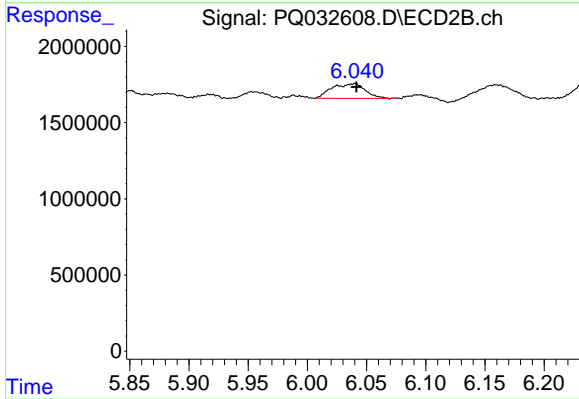
#19 AR-1242-4

R.T.: 5.606 min
 Delta R.T.: -0.043 min
 Response: 459031
 Conc: 44.02 ng/ml



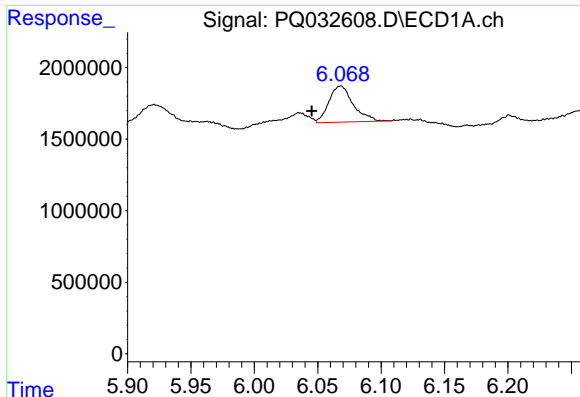
#20 AR-1242-5

R.T.: 6.433 min
 Delta R.T.: 0.038 min
 Response: 4525567
 Conc: 99.60 ng/ml



#20 AR-1242-5

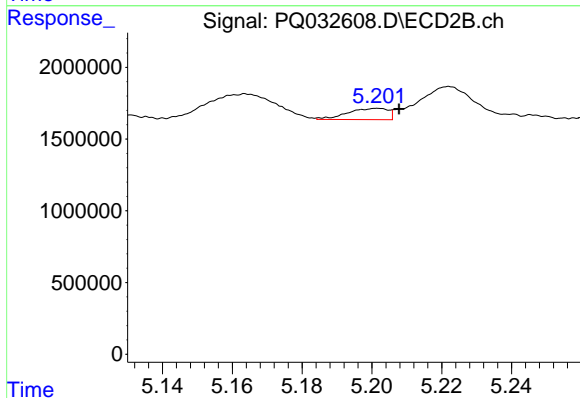
R.T.: 6.041 min
 Delta R.T.: 0.000 min
 Response: 1887793
 Conc: 79.53 ng/ml



#21 AR-1248-1

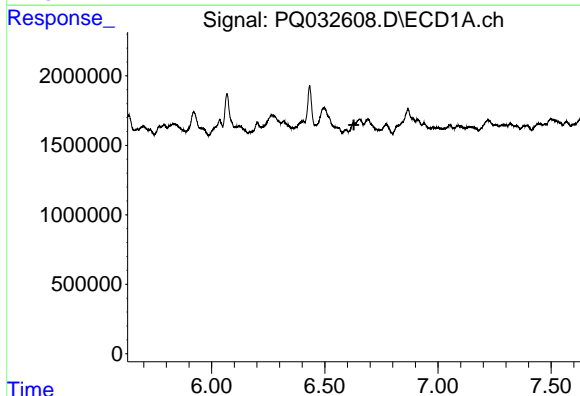
R.T.: 6.068 min
 Delta R.T.: 0.023 min
 Response: 3366853
 Conc: 58.18 ng/ml

Instrument :
 ECD_Q
 ClientSampleId :



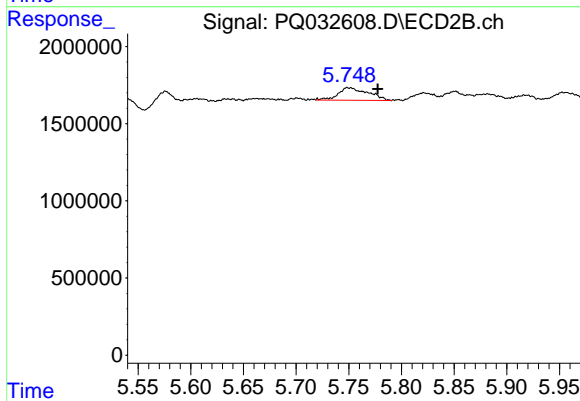
#21 AR-1248-1

R.T.: 5.202 min
 Delta R.T.: -0.006 min
 Response: 629432
 Conc: 12.80 ng/ml



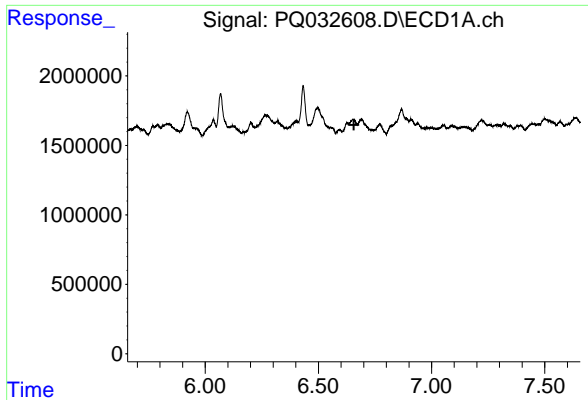
#22 AR-1248-2

R.T.: 0.000 min
 Exp R.T. : 6.629 min
 Response: 0
 Conc: N.D.



#22 AR-1248-2

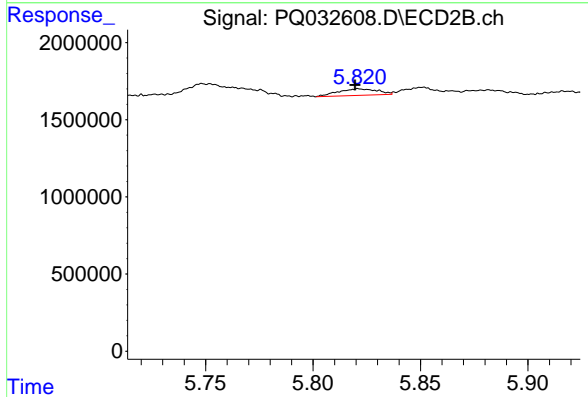
R.T.: 5.748 min
 Delta R.T.: -0.029 min
 Response: 1619068
 Conc: 17.71 ng/ml



#23 AR-1248-3

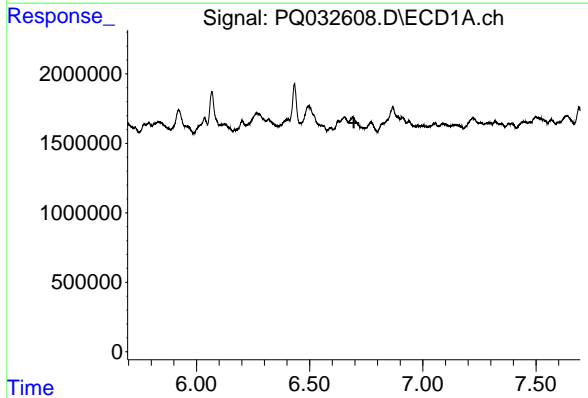
R.T.: 0.000 min
 Exp R.T. : 6.657 min
 Response: 0
 Conc: N.D.

Instrument :
 ECD_Q
 ClientSampled :



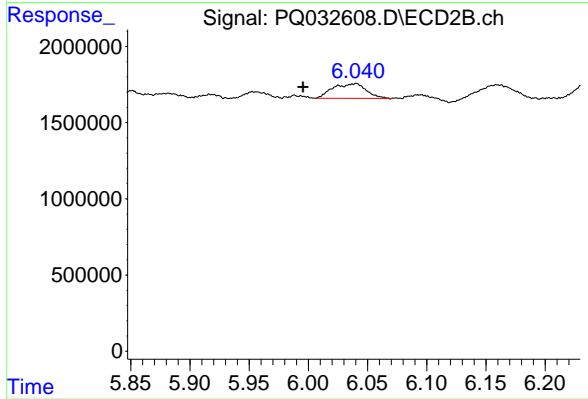
#23 AR-1248-3

R.T.: 5.821 min
 Delta R.T.: 0.002 min
 Response: 538067
 Conc: 8.51 ng/ml



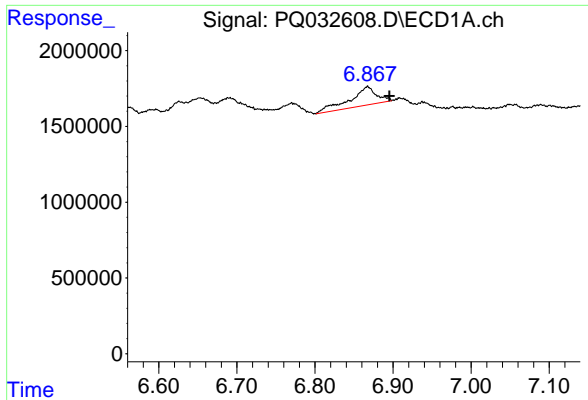
#24 AR-1248-4

R.T.: 0.000 min
 Exp R.T. : 6.696 min
 Response: 0
 Conc: N.D.



#24 AR-1248-4

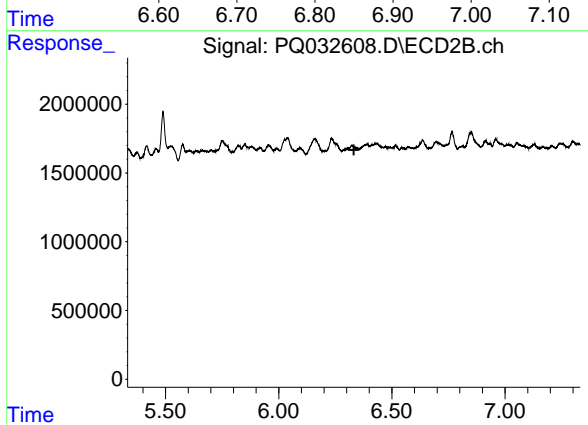
R.T.: 6.041 min
 Delta R.T.: 0.045 min
 Response: 1887793
 Conc: 34.60 ng/ml



#25 AR-1248-5

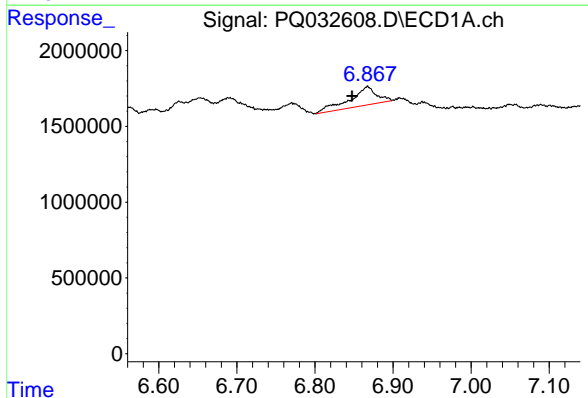
R.T.: 6.867 min
 Delta R.T.: -0.028 min
 Response: 2925193
 Conc: 63.95 ng/ml

Instrument :
 ECD_Q
 ClientSampleId :



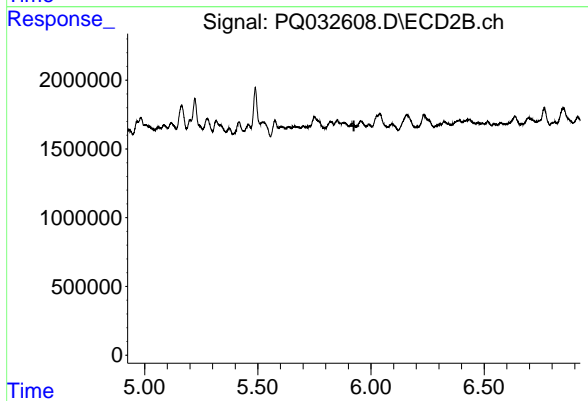
#25 AR-1248-5

R.T.: 0.000 min
 Exp R.T. : 6.332 min
 Response: 0
 Conc: N.D.



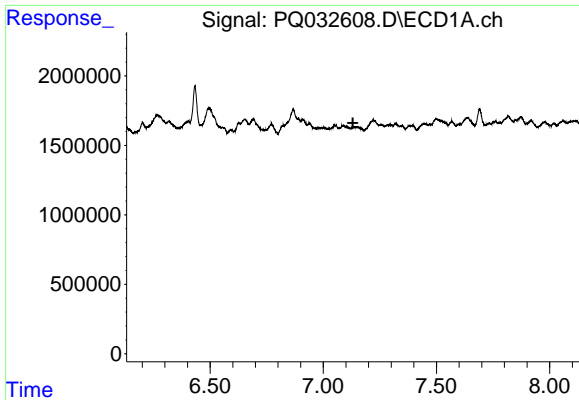
#26 AR-1254-1

R.T.: 6.867 min
 Delta R.T.: 0.020 min
 Response: 2925193
 Conc: 17.64 ng/ml



#26 AR-1254-1

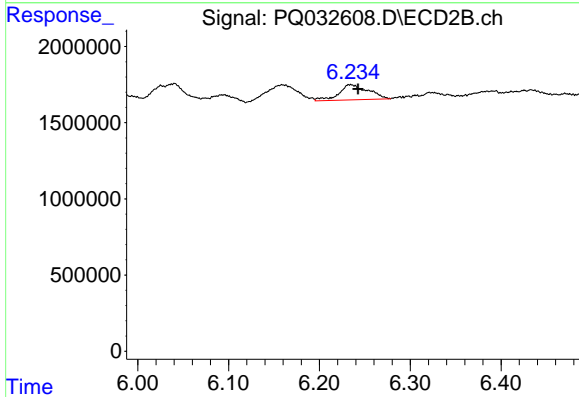
R.T.: 0.000 min
 Exp R.T. : 5.924 min
 Response: 0
 Conc: N.D.



#27 AR-1254-2

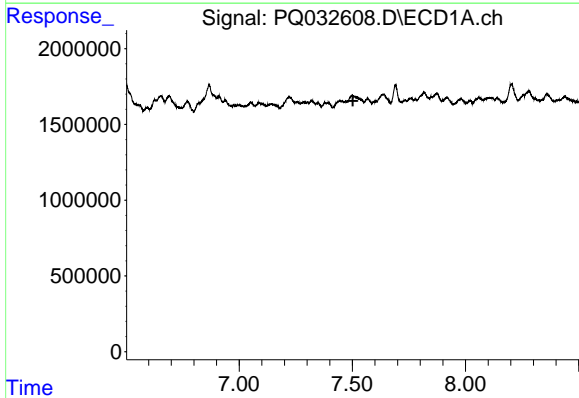
R.T.: 0.000 min
 Exp R.T. : 7.131 min
 Response: 0
 Conc: N.D.

Instrument :
 ECD_Q
 ClientSampled :



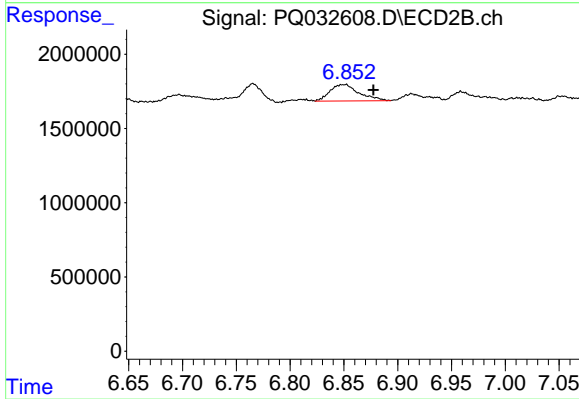
#27 AR-1254-2

R.T.: 6.235 min
 Delta R.T.: -0.008 min
 Response: 2220543
 Conc: 22.47 ng/ml



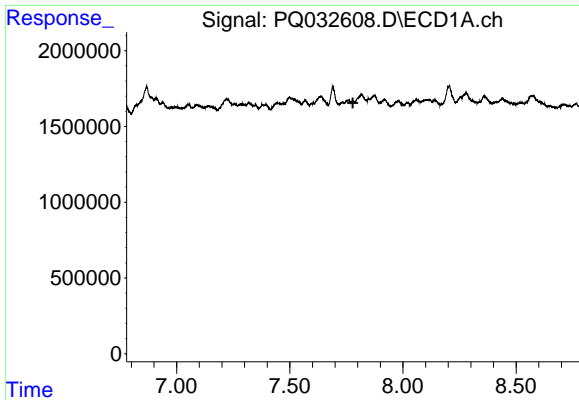
#29 AR-1254-4

R.T.: 0.000 min
 Exp R.T. : 7.503 min
 Response: 0
 Conc: N.D.



#29 AR-1254-4

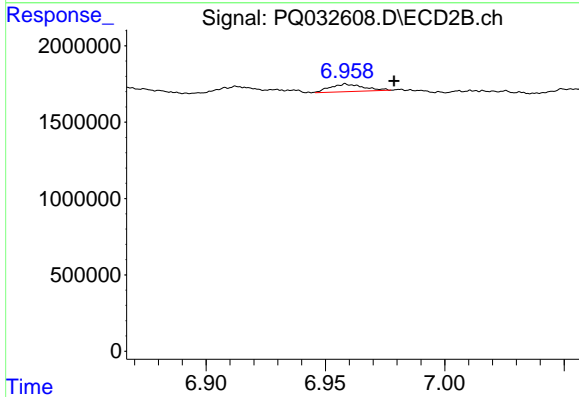
R.T.: 6.852 min
 Delta R.T.: -0.025 min
 Response: 2082888
 Conc: 23.68 ng/ml



#30 AR-1254-5

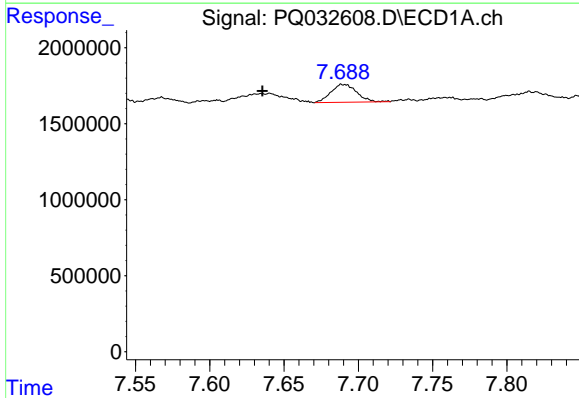
R.T.: 0.000 min
 Exp R.T.: 7.779 min
 Response: 0
 Conc: N.D.

Instrument :
 ECD_Q
 ClientSampled :



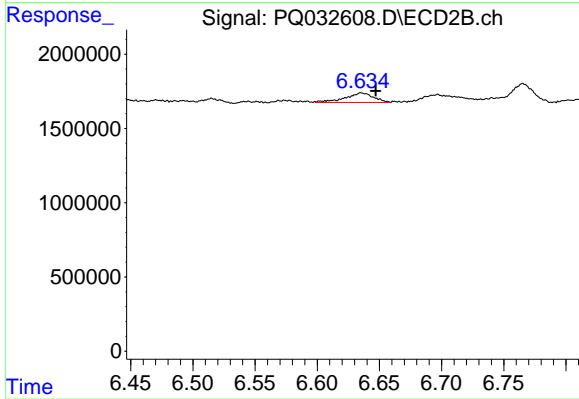
#30 AR-1254-5

R.T.: 6.959 min
 Delta R.T.: -0.020 min
 Response: 480740
 Conc: 2.77 ng/ml



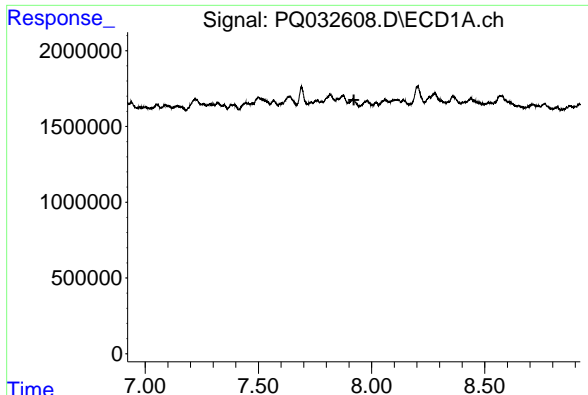
#32 AR-1260-2

R.T.: 7.690 min
 Delta R.T.: 0.054 min
 Response: 1436595
 Conc: 10.71 ng/ml



#32 AR-1260-2

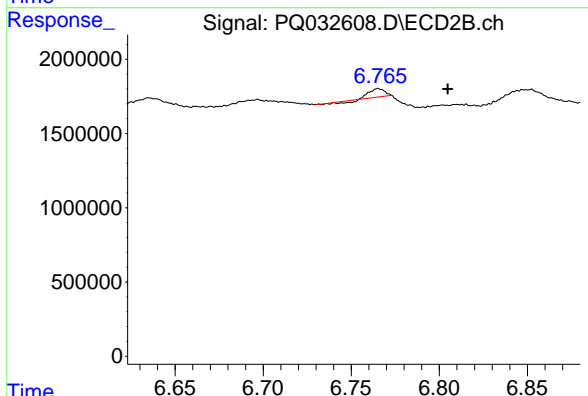
R.T.: 6.635 min
 Delta R.T.: -0.012 min
 Response: 999906
 Conc: 7.73 ng/ml



#33 AR-1260-3

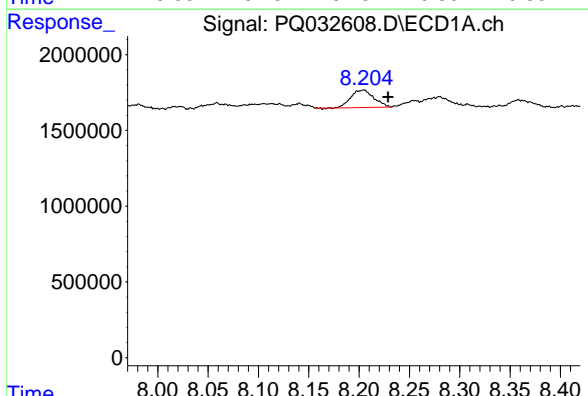
R.T.: 0.000 min
 Exp R.T.: 7.922 min
 Response: 0
 Conc: N.D.

Instrument :
 ECD_Q
 ClientSampleId :



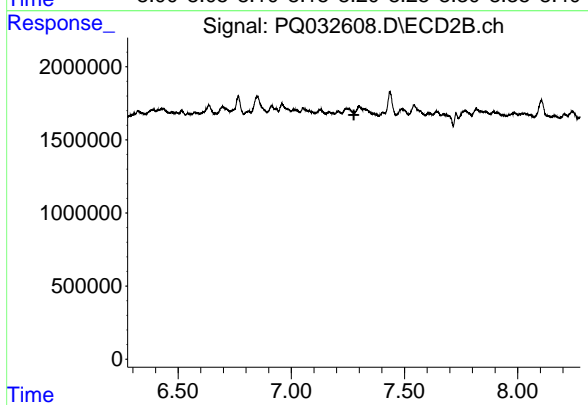
#33 AR-1260-3

R.T.: 6.765 min
 Delta R.T.: -0.039 min
 Response: 281837
 Conc: 2.34 ng/ml



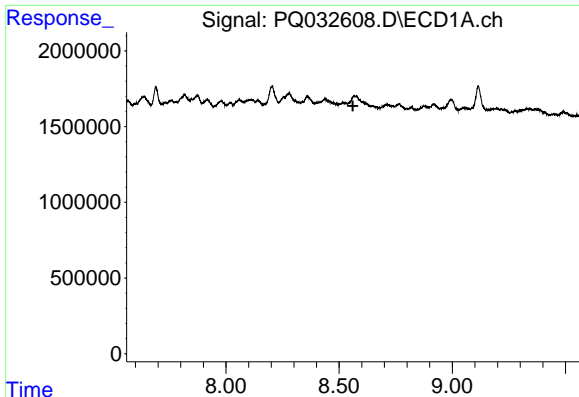
#34 AR-1260-4

R.T.: 8.205 min
 Delta R.T.: -0.024 min
 Response: 1823326
 Conc: 15.96 ng/ml



#34 AR-1260-4

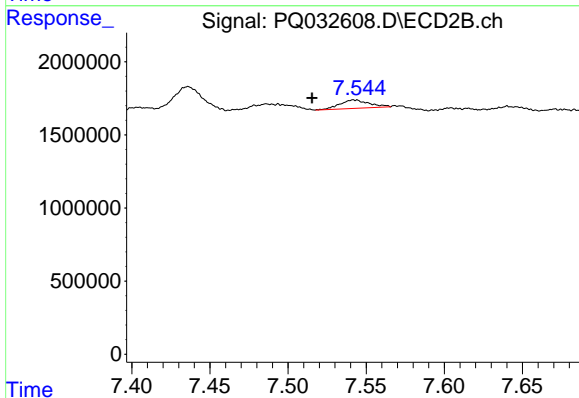
R.T.: 0.000 min
 Exp R.T.: 7.276 min
 Response: 0
 Conc: N.D.



#35 AR-1260-5

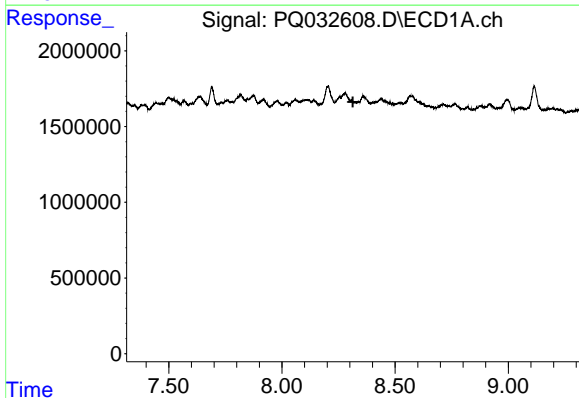
R.T.: 0.000 min
 Exp R.T. : 8.561 min
 Response: 0
 Conc: N.D.

Instrument :
 ECD_Q
 ClientSampleId :



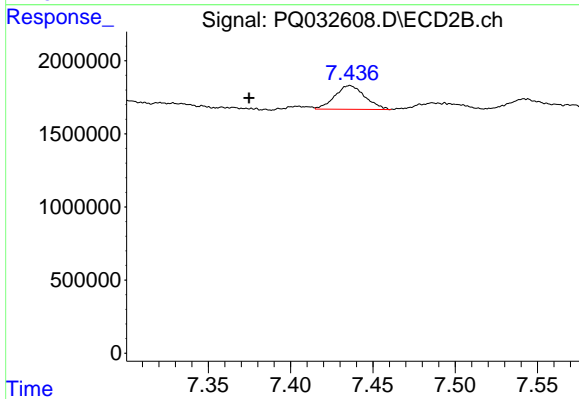
#35 AR-1260-5

R.T.: 7.542 min
 Delta R.T.: 0.026 min
 Response: 751752
 Conc: 3.15 ng/ml



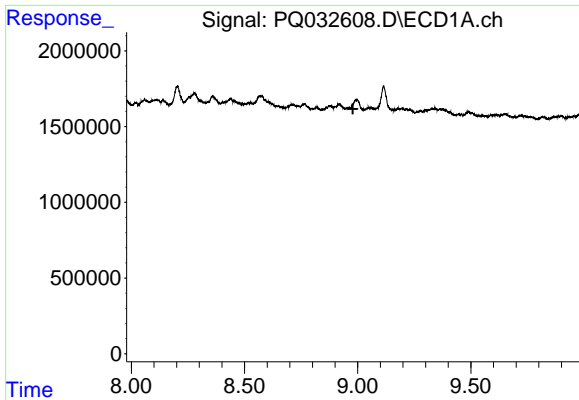
#38 AR-1262-3

R.T.: 0.000 min
 Exp R.T. : 8.313 min
 Response: 0
 Conc: N.D.



#38 AR-1262-3

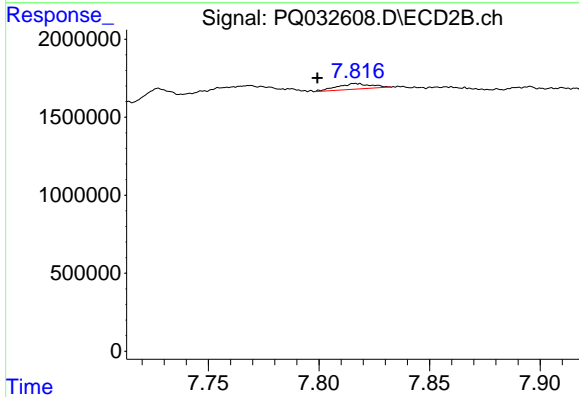
R.T.: 7.436 min
 Delta R.T.: 0.061 min
 Response: 2064090
 Conc: 37.79 ng/ml



#39 AR-1262-4

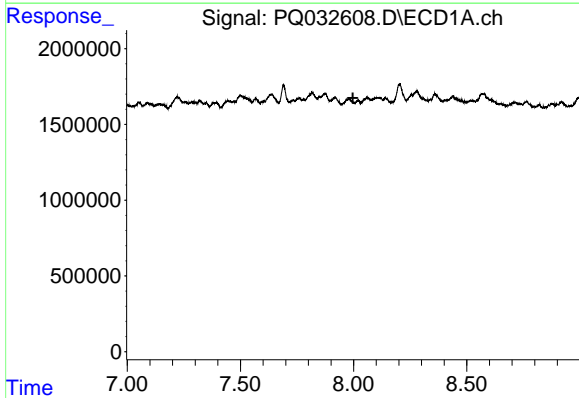
R.T.: 0.000 min
 Exp R.T.: 8.979 min
 Response: 0
 Conc: N.D.

Instrument :
 ECD_Q
 ClientSampled :



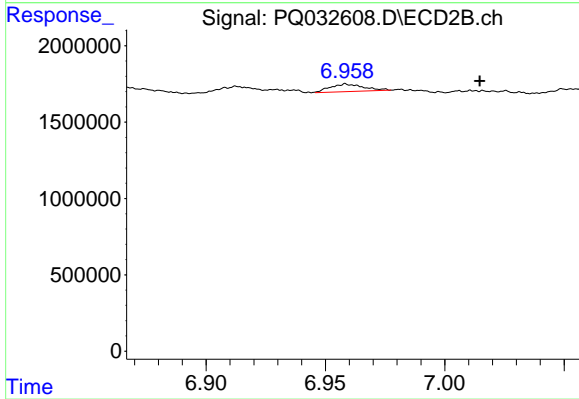
#39 AR-1262-4

R.T.: 7.816 min
 Delta R.T.: 0.017 min
 Response: 382164
 Conc: 4.28 ng/ml



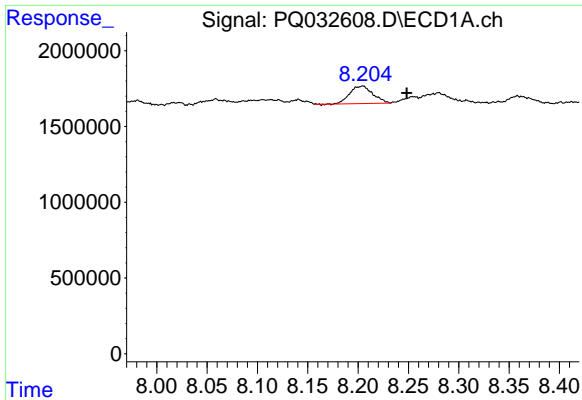
#41 AR-1268-1

R.T.: 0.000 min
 Exp R.T.: 7.997 min
 Response: 0
 Conc: N.D.



#41 AR-1268-1

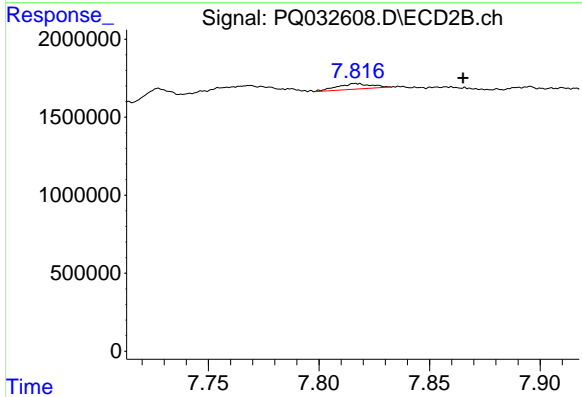
R.T.: 6.959 min
 Delta R.T.: -0.056 min
 Response: 480740
 Conc: 9.54 ng/ml



#42 AR-1268-2

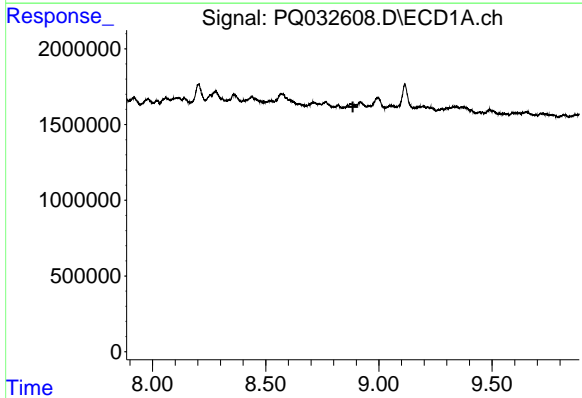
R.T.: 8.205 min
 Delta R.T.: -0.044 min
 Response: 1823326
 Conc: 26.77 ng/ml

Instrument :
 ECD_Q
 ClientSampled :



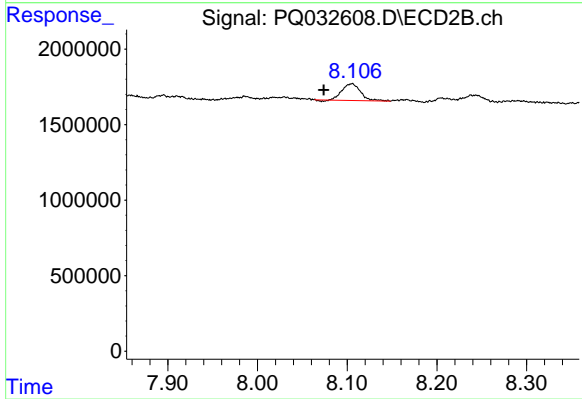
#42 AR-1268-2

R.T.: 7.816 min
 Delta R.T.: -0.049 min
 Response: 382164
 Conc: 1.44 ng/ml



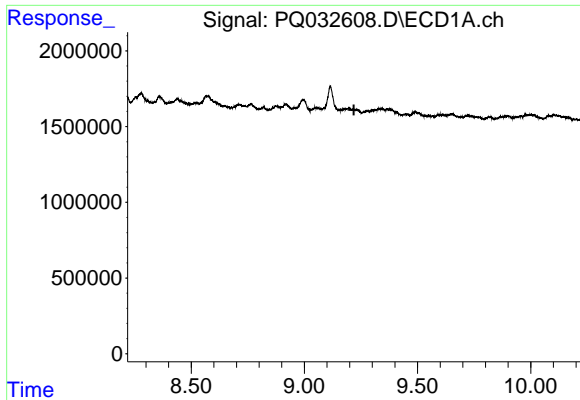
#43 AR-1268-3

R.T.: 0.000 min
 Exp R.T. : 8.885 min
 Response: 0
 Conc: N.D.



#43 AR-1268-3

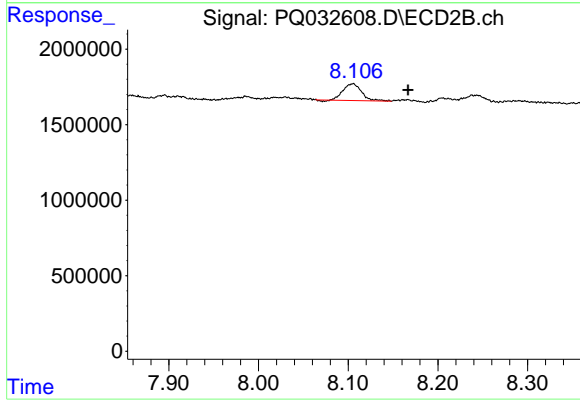
R.T.: 8.106 min
 Delta R.T.: 0.032 min
 Response: 1592126
 Conc: 7.29 ng/ml



#44 AR-1268-4

R.T.: 0.000 min
Exp R.T.: 9.219 min
Response: 0
Conc: N.D.

Instrument :
ECD_Q
ClientSampleId :



#44 AR-1268-4

R.T.: 8.106 min
Delta R.T.: -0.061 min
Response: 1592126
Conc: 27.71 ng/ml