

Data Path : Z:\pestpcbsrv\HPCHEM1\ECD_Q\Data\PQ100318\
 Data File : PQ032609.D
 Signal(s) : Signal #1: ECD1A.ch Signal #2: ECD2B.ch
 Acq On : 03 Oct 2018 20:59
 Operator : SM\SJ
 Sample : J5221-12
 Misc :
 ALS Vial : 30 Sample Multiplier: 1

Instrument :
 ECD_Q
 ClientSampled :

Integration File signal 1: autoint1.e
 Integration File signal 2: autoint2.e
 Quant Time: Oct 04 02:52:16 2018
 Quant Method : Z:\pestpcbsrv\HPCHEM1\ECD_Q\Method\PQ091818.M
 Quant Title : GC EXTRACTABLES
 QLast Update : Wed Sep 19 02:07:33 2018
 Response via : Initial Calibration
 Integrator: ChemStation

Volume Inj. : 2 µl
 Signal #1 Phase : ZB-MR1 Signal #2 Phase: ZB-MR2
 Signal #1 Info : 30Mx0.32mmx 0.50µ Signal #2 Info : 30M x 0.32mm x 0.25µm

Compound	RT#1	RT#2	Resp#1	Resp#2	ng/ml	ng/ml

System Monitoring Compounds						
1) SA Tetrachlo...	4.589	3.867	40769561	31719348	17.583	15.838
2) SA Decachlor...	10.437	8.935	23141419	18017350	11.101	9.305
Target Compounds						
3) L1 AR-1016-1	0.000	4.610	0	2035489	N.D.	42.186 #
4) L1 AR-1016-2	5.535	4.967	1989625	866937	37.941	12.847 #
5) L1 AR-1016-3	0.000	4.984	0	2115020	N.D.	22.637 #
6) L1 AR-1016-4	0.000	4.984	0	2115020	N.D.	35.624 #
7) L1 AR-1016-5	0.000	5.419	0	991110	N.D.	18.964 #
8) L2 AR-1221-1	4.873	4.106	2017578	418000	85.565	20.619 #
9) L2 AR-1221-2	4.873	4.172	2017578	436732	114.945	27.955 #
10) L2 AR-1221-3	4.979	4.256	5127033	1160287	92.572	23.693 #
11) L3 AR-1232-1	0.000	4.689	0	701152	N.D.	40.226 #
12) L3 AR-1232-2	0.000	4.867	0	2466644	N.D.	488.867 #
13) L3 AR-1232-3	6.066	5.277	3320100	1824412	576.122	116.317 #
14) L3 AR-1232-4	6.432	5.575	3318640	1487441	687.990	80.544 #
15) L3 AR-1232-5	0.000	6.170	0	3290787	N.D.	1153.279 #
16) L4 AR-1242-1	0.000	4.610	0	2035489	N.D.	102.400 #
17) L4 AR-1242-2	6.066	5.222	3320100	4522868	91.449	126.071 #
18) L4 AR-1242-3	0.000	5.277	0	1824412	N.D.	154.962 #
19) L4 AR-1242-4	0.000	5.602	0	414841	N.D.	39.784 #
20) L4 AR-1242-5	6.432	6.041	3318640	1937842	73.036	81.641
21) L5 AR-1248-1	6.037	5.222	800446	4522868	13.831	91.961 #
22) L5 AR-1248-2	0.000	5.766	0	977330	N.D.	10.691 #
23) L5 AR-1248-3	0.000	5.818	0	499243	N.D.	7.894 #
24) L5 AR-1248-4	0.000	6.041	0	1937842	N.D.	35.520 #
25) L5 AR-1248-5	6.864	6.337	2422194	141397	52.955	3.474 #
26) L6 AR-1254-1	6.864	0.000	2422194	0	14.608	N.D. #
27) L6 AR-1254-2	0.000	6.235	0	1952035	N.D.	19.751 #
29) L6 AR-1254-4	0.000	6.847	0	1693963	N.D.	19.258 #
30) L6 AR-1254-5	0.000	6.961	0	959367	N.D.	5.523 #
32) L7 AR-1260-2	7.624	0.000	2869893	0	21.386	N.D. #
33) L7 AR-1260-3	0.000	6.764	0	924133	N.D.	7.658 #
34) L7 AR-1260-4	8.198	0.000	1598030	0	13.989	N.D. #
35) L7 AR-1260-5	0.000	7.541	0	621247	N.D.	2.602 #
36) L8 AR-1262-1	0.000	6.337	0	141397	N.D.	2.685 #
38) L8 AR-1262-3	0.000	7.438	0	2734350	N.D.	50.057 #
39) L8 AR-1262-4	0.000	7.771	0	499358	N.D.	5.587 #
41) L9 AR-1268-1	0.000	6.961	0	959367	N.D.	19.039 #
42) L9 AR-1268-2	8.198	0.000	1598030	0	23.465	N.D. #
43) L9 AR-1268-3	0.000	8.103	0	1548719	N.D.	7.089 #
44) L9 AR-1268-4	0.000	8.103	0	1548719	N.D.	26.959 #

Data Path : Z:\pestpcbsrv\HPCHEM1\ECD_Q\Data\PQ100318\
Data File : PQ032609.D
Signal(s) : Signal #1: ECD1A.ch Signal #2: ECD2B.ch
Acq On : 03 Oct 2018 20:59
Operator : SM\SJ
Sample : J5221-12
Misc :
ALS Vial : 30 Sample Multiplier: 1

Instrument :
ECD_Q
ClientSampleId :

Integration File signal 1: autoint1.e
Integration File signal 2: autoint2.e
Quant Time: Oct 04 02:52:16 2018
Quant Method : Z:\pestpcbsrv\HPCHEM1\ECD_Q\Method\PQ091818.M
Quant Title : GC EXTRACTABLES
QLast Update : Wed Sep 19 02:07:33 2018
Response via : Initial Calibration
Integrator: ChemStation

Volume Inj. : 2 µl
Signal #1 Phase : ZB-MR1 Signal #2 Phase: ZB-MR2
Signal #1 Info : 30Mx0.32mmx 0.50µ Signal #2 Info : 30M x 0.32mm x 0.25µm

Compound	RT#1	RT#2	Resp#1	Resp#2	ng/ml	ng/ml
----------	------	------	--------	--------	-------	-------

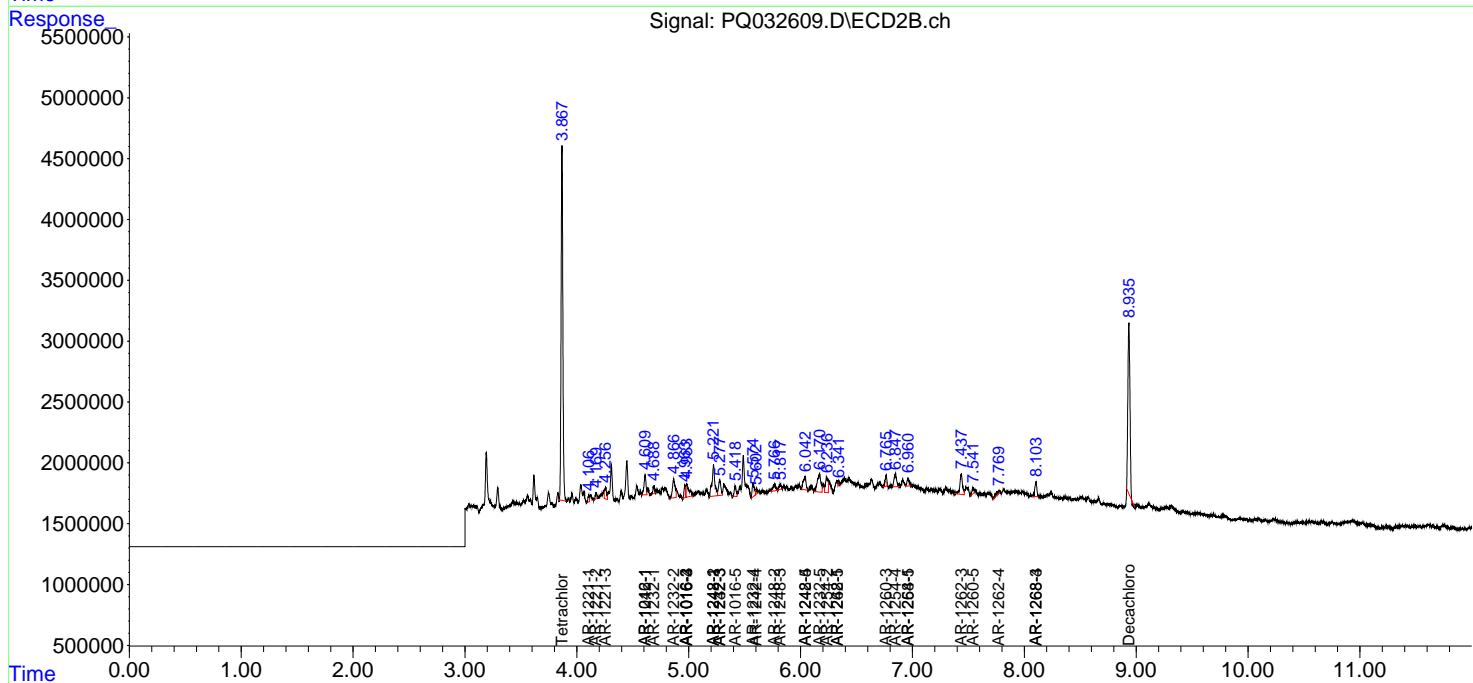
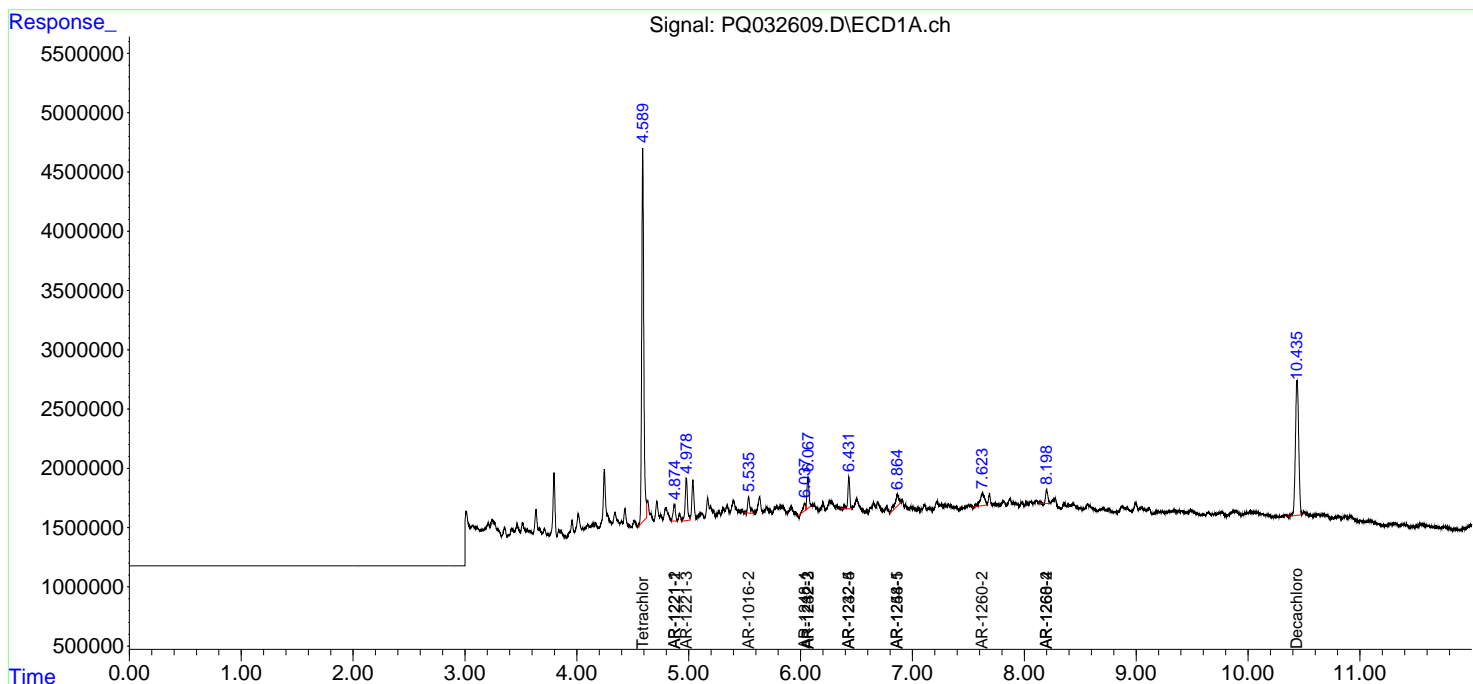
(f)=RT Delta > 1/2 Window (#)=Amounts differ by > 25% (m)=manual int.

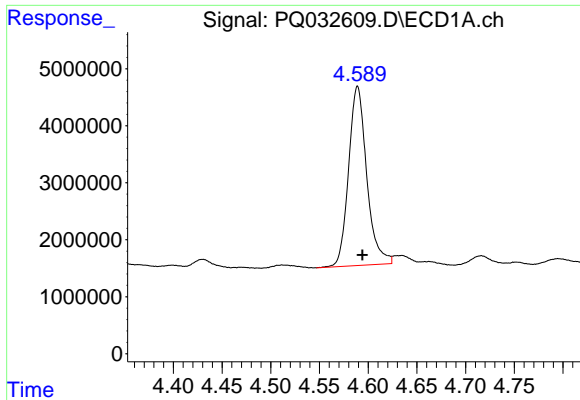
Data Path : Z:\pestpcbsrv\HPCHEM1\ECD_Q\Data\PQ100318\
 Data File : PQ032609.D
 Signal(s) : Signal #1: ECD1A.ch Signal #2: ECD2B.ch
 Acq On : 03 Oct 2018 20:59
 Operator : SM\SJ
 Sample : J5221-12
 Misc :
 ALS Vial : 30 Sample Multiplier: 1

Instrument :
 ECD_Q
 ClientSampled :

Integration File signal 1: autoint1.e
 Integration File signal 2: autoint2.e
 Quant Time: Oct 04 02:52:16 2018
 Quant Method : Z:\pestpcbsrv\HPCHEM1\ECD_Q\Method\PQ091818.M
 Quant Title : GC EXTRACTABLES
 QLast Update : Wed Sep 19 02:07:33 2018
 Response via : Initial Calibration
 Integrator: ChemStation

Volume Inj. : 2 µl
 Signal #1 Phase : ZB-MR1 Signal #2 Phase: ZB-MR2
 Signal #1 Info : 30Mx0.32mmx 0.50µ Signal #2 Info : 30M x 0.32mm x 0.25µm

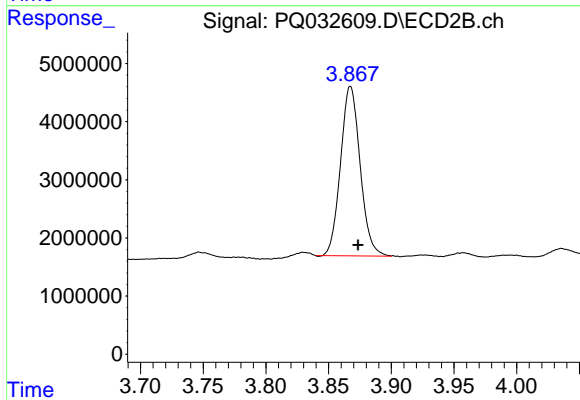




#1 Tetrachloro-m-xylene

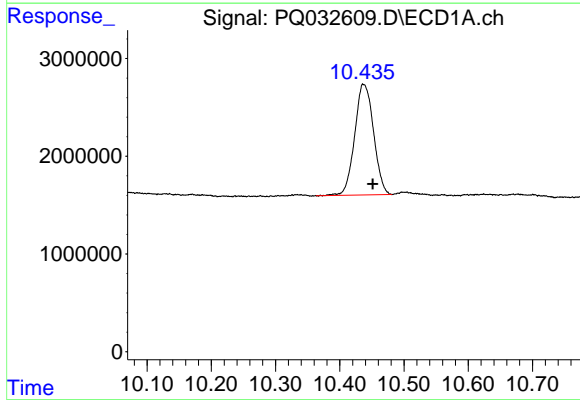
R.T.: 4.589 min
 Delta R.T.: -0.005 min
 Response: 40769561
 Conc: 17.58 ng/ml

Instrument :
 ECD_Q
 ClientSampled :



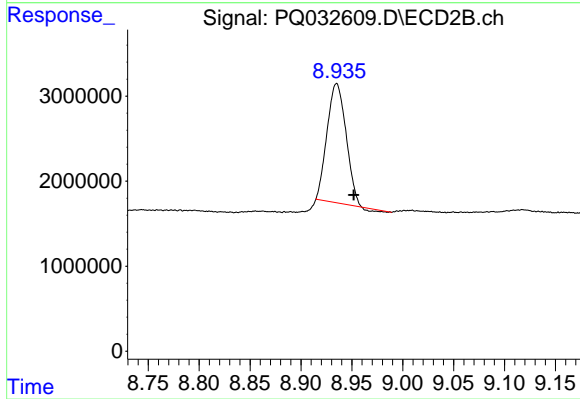
#1 Tetrachloro-m-xylene

R.T.: 3.867 min
 Delta R.T.: -0.006 min
 Response: 31719348
 Conc: 15.84 ng/ml



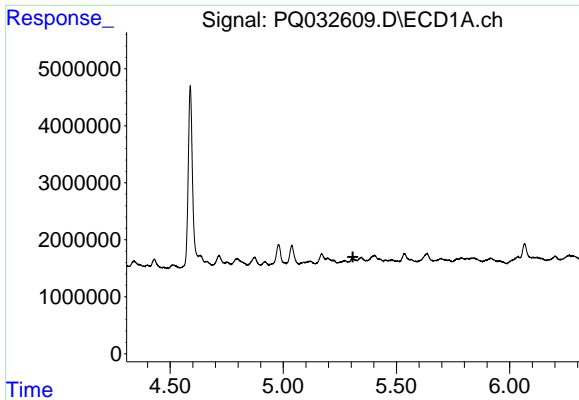
#2 Decachlorobiphenyl

R.T.: 10.437 min
 Delta R.T.: -0.014 min
 Response: 23141419
 Conc: 11.10 ng/ml



#2 Decachlorobiphenyl

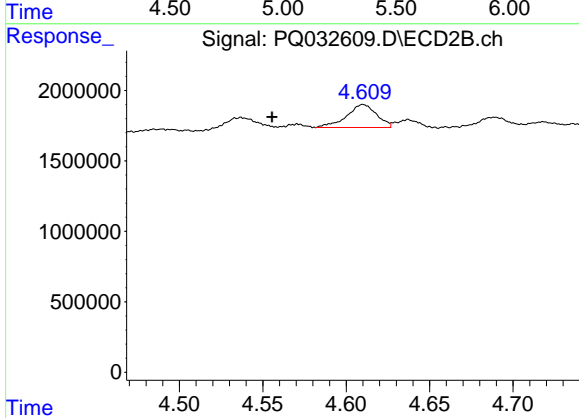
R.T.: 8.935 min
 Delta R.T.: -0.017 min
 Response: 18017350
 Conc: 9.30 ng/ml



#3 AR-1016-1

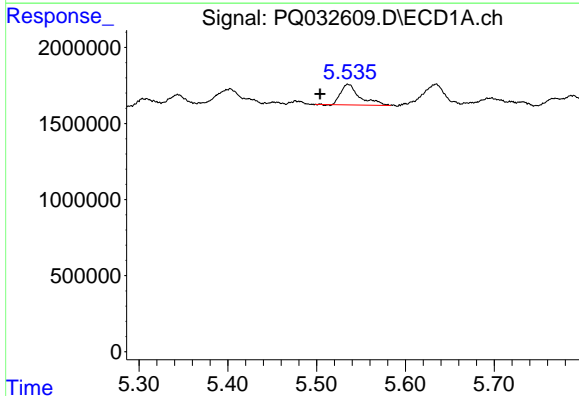
R.T.: 0.000 min
 Exp R.T.: 5.307 min
 Response: 0
 Conc: N.D.

Instrument :
 ECD_Q
 ClientSampled :



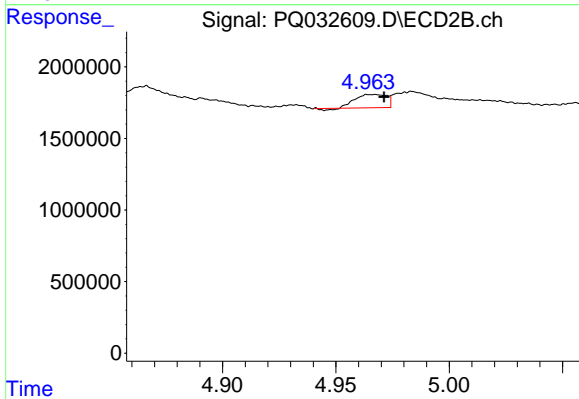
#3 AR-1016-1

R.T.: 4.610 min
 Delta R.T.: 0.054 min
 Response: 2035489
 Conc: 42.19 ng/ml



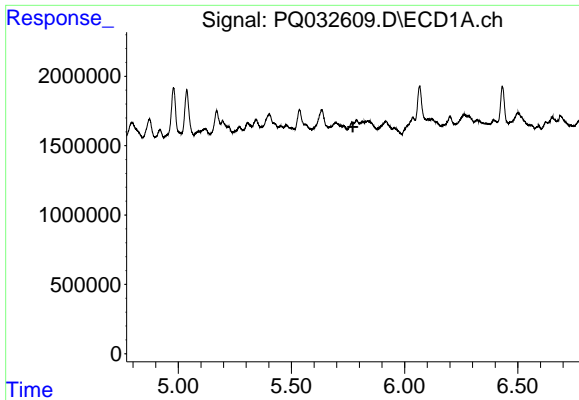
#4 AR-1016-2

R.T.: 5.535 min
 Delta R.T.: 0.032 min
 Response: 1989625
 Conc: 37.94 ng/ml



#4 AR-1016-2

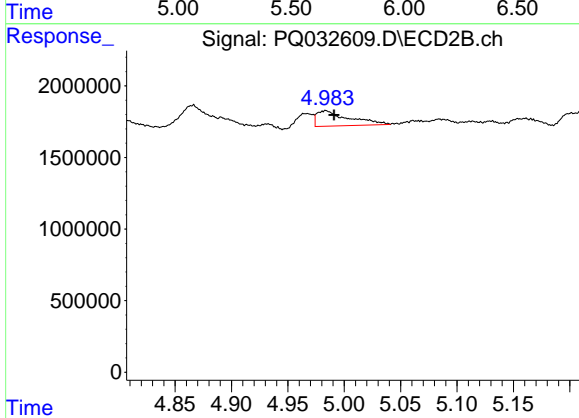
R.T.: 4.967 min
 Delta R.T.: -0.004 min
 Response: 866937
 Conc: 12.85 ng/ml



#5 AR-1016-3

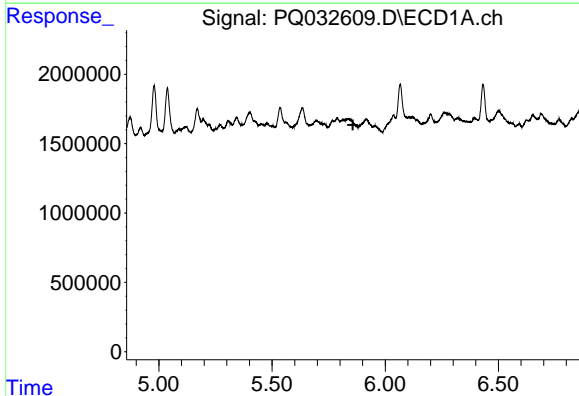
R.T.: 0.000 min
 Exp R.T.: 5.772 min
 Response: 0
 Conc: N.D.

Instrument :
 ECD_Q
 ClientSampled :



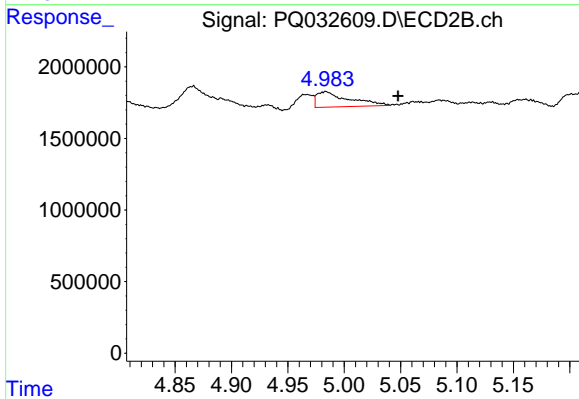
#5 AR-1016-3

R.T.: 4.984 min
 Delta R.T.: -0.007 min
 Response: 2115020
 Conc: 22.64 ng/ml



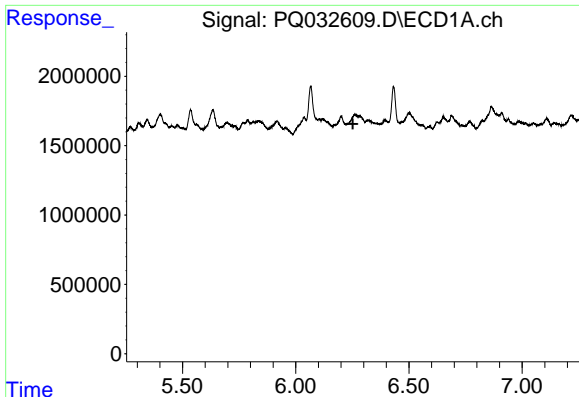
#6 AR-1016-4

R.T.: 0.000 min
 Exp R.T.: 5.857 min
 Response: 0
 Conc: N.D.



#6 AR-1016-4

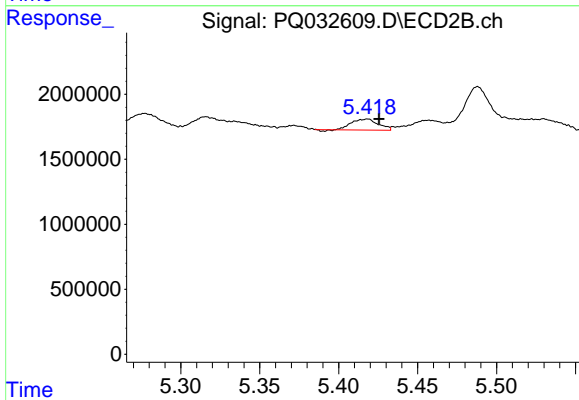
R.T.: 4.984 min
 Delta R.T.: -0.064 min
 Response: 2115020
 Conc: 35.62 ng/ml



#7 AR-1016-5

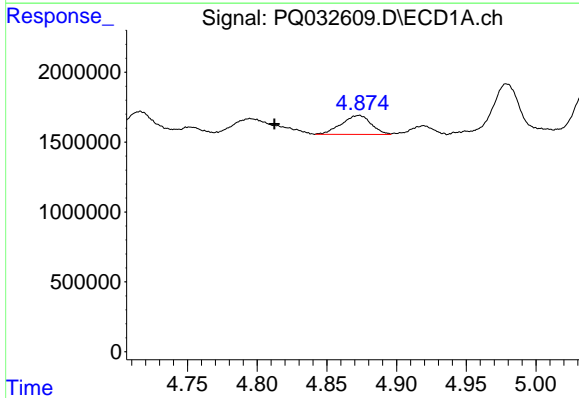
R.T.: 0.000 min
 Exp R.T.: 6.252 min
 Response: 0
 Conc: N.D.

Instrument :
 ECD_Q
 ClientSampleId :



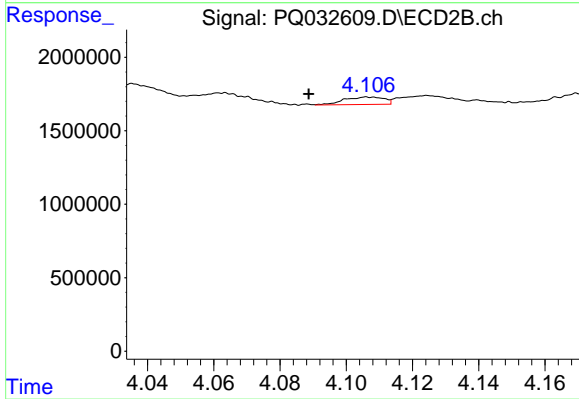
#7 AR-1016-5

R.T.: 5.419 min
 Delta R.T.: -0.007 min
 Response: 991110
 Conc: 18.96 ng/ml



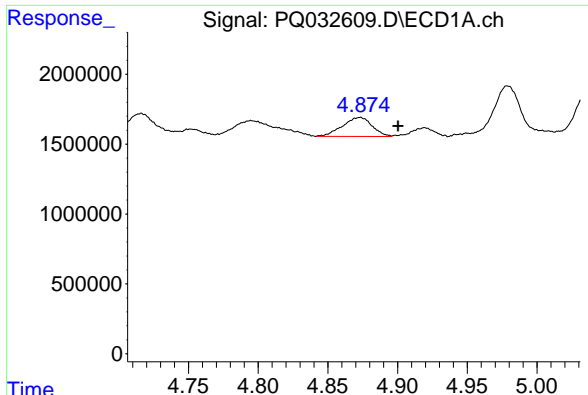
#8 AR-1221-1

R.T.: 4.873 min
 Delta R.T.: 0.061 min
 Response: 2017578
 Conc: 85.57 ng/ml



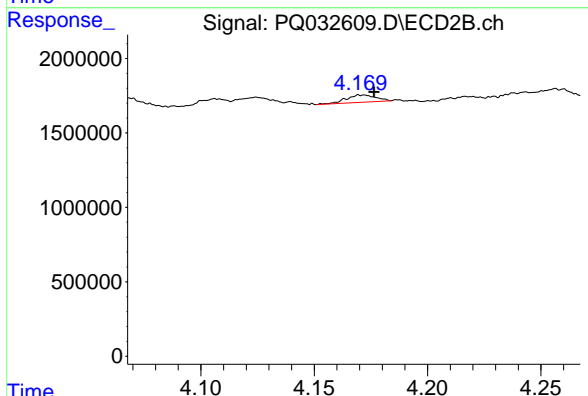
#8 AR-1221-1

R.T.: 4.106 min
 Delta R.T.: 0.018 min
 Response: 418000
 Conc: 20.62 ng/ml

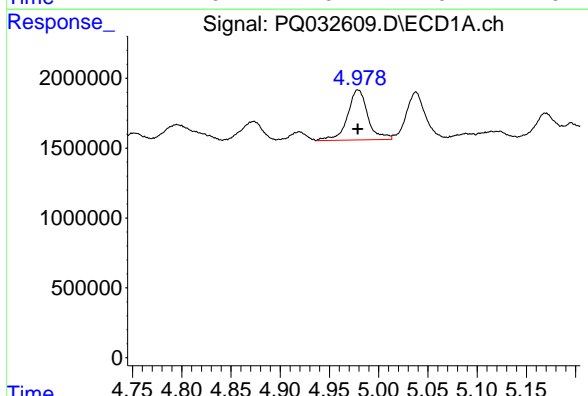


#9 AR-1221-2
 R.T.: 4.873 min
 Delta R.T.: -0.027 min
 Response: 2017578
 Conc: 114.95 ng/ml

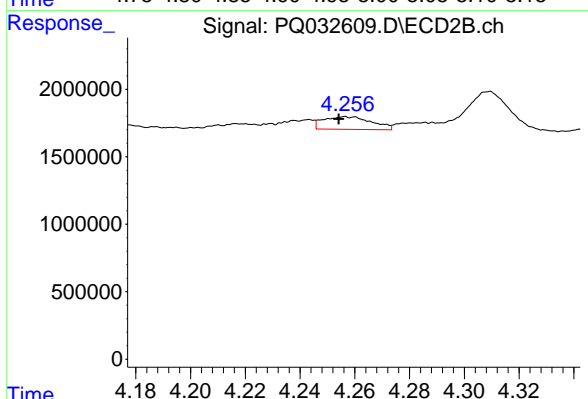
Instrument :
 ECD_Q
 ClientSampleId :



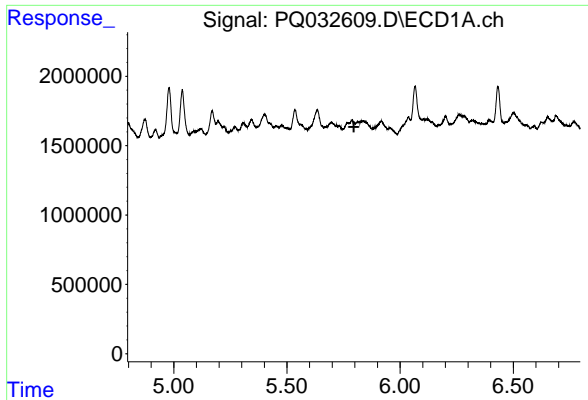
#9 AR-1221-2
 R.T.: 4.172 min
 Delta R.T.: -0.004 min
 Response: 436732
 Conc: 27.95 ng/ml



#10 AR-1221-3
 R.T.: 4.979 min
 Delta R.T.: 0.000 min
 Response: 5127033
 Conc: 92.57 ng/ml



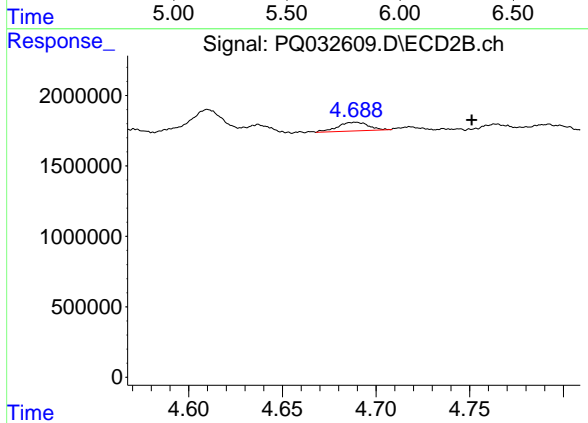
#10 AR-1221-3
 R.T.: 4.256 min
 Delta R.T.: 0.002 min
 Response: 1160287
 Conc: 23.69 ng/ml



#11 AR-1232-1

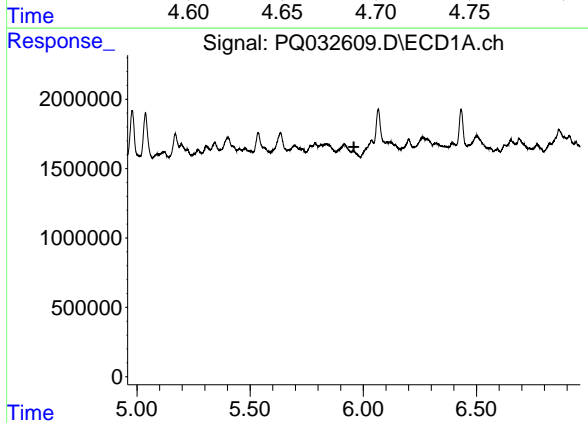
R.T.: 0.000 min
 Exp R.T.: 5.796 min
 Response: 0
 Conc: N.D.

Instrument :
 ECD_Q
 ClientSampled :



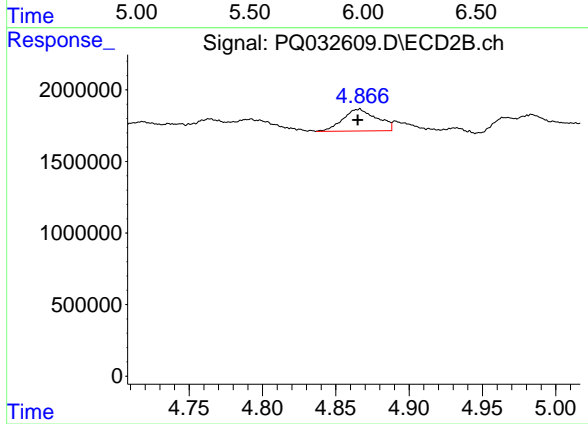
#11 AR-1232-1

R.T.: 4.689 min
 Delta R.T.: -0.062 min
 Response: 701152
 Conc: 40.23 ng/ml



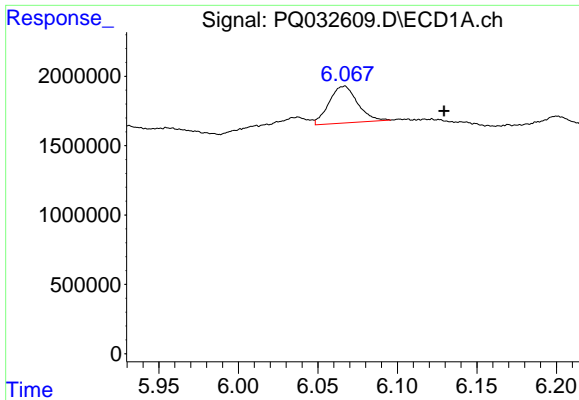
#12 AR-1232-2

R.T.: 0.000 min
 Exp R.T.: 5.959 min
 Response: 0
 Conc: N.D.



#12 AR-1232-2

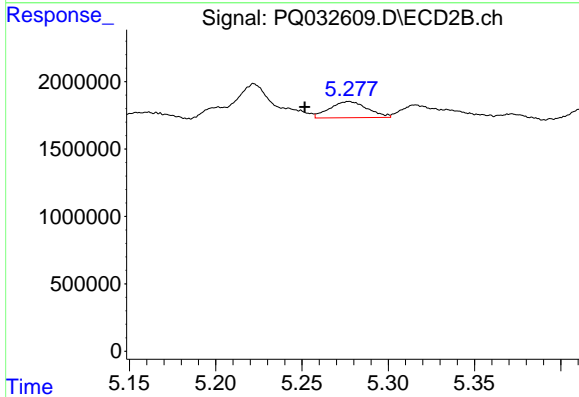
R.T.: 4.867 min
 Delta R.T.: 0.002 min
 Response: 2466644
 Conc: 488.87 ng/ml



#13 AR-1232-3

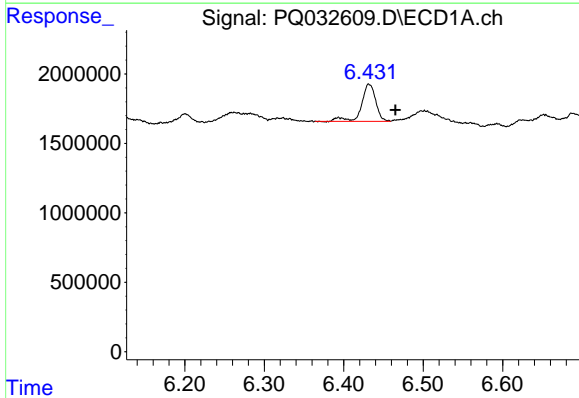
R.T.: 6.066 min
 Delta R.T.: -0.063 min
 Response: 3320100
 Conc: 576.12 ng/ml

Instrument :
 ECD_Q
 ClientSampleId :



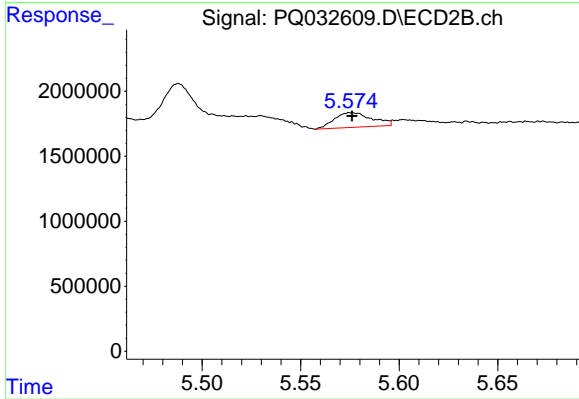
#13 AR-1232-3

R.T.: 5.277 min
 Delta R.T.: 0.026 min
 Response: 1824412
 Conc: 116.32 ng/ml



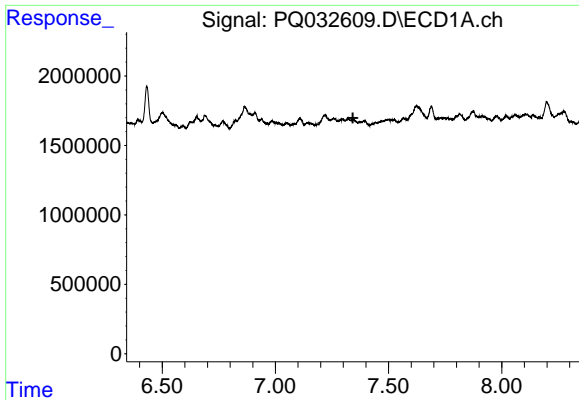
#14 AR-1232-4

R.T.: 6.432 min
 Delta R.T.: -0.033 min
 Response: 3318640
 Conc: 687.99 ng/ml



#14 AR-1232-4

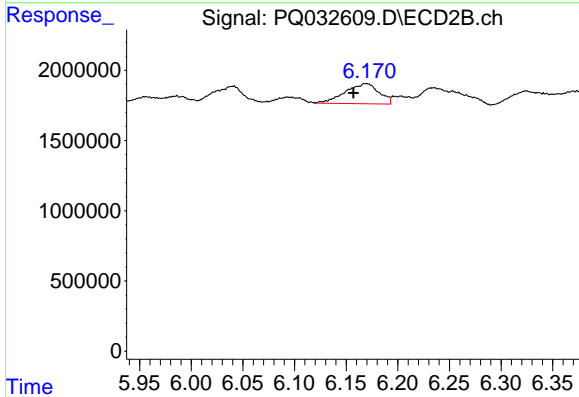
R.T.: 5.575 min
 Delta R.T.: 0.000 min
 Response: 1487441
 Conc: 80.54 ng/ml



#15 AR-1232-5

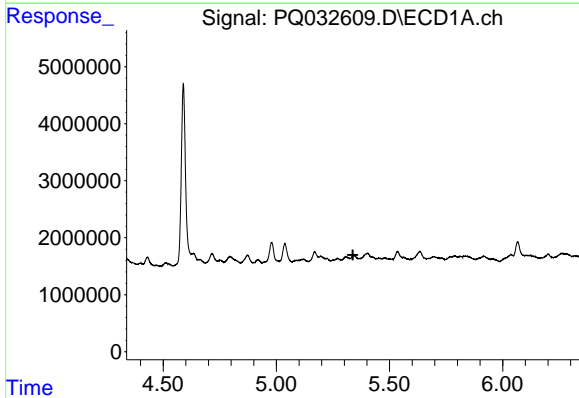
R.T.: 0.000 min
 Exp R.T. : 7.343 min
 Response: 0
 Conc: N.D.

Instrument :
 ECD_Q
 ClientSampled :



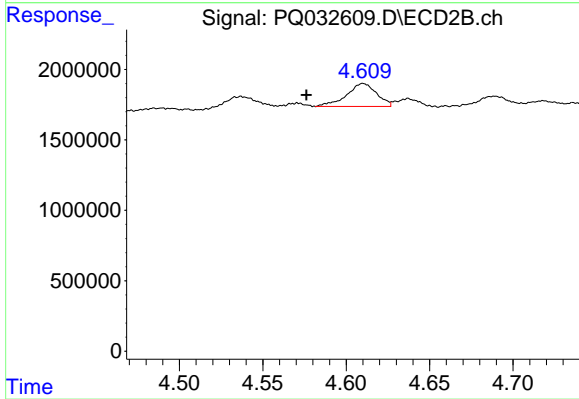
#15 AR-1232-5

R.T.: 6.170 min
 Delta R.T.: 0.013 min
 Response: 3290787
 Conc: 1153.28 ng/ml



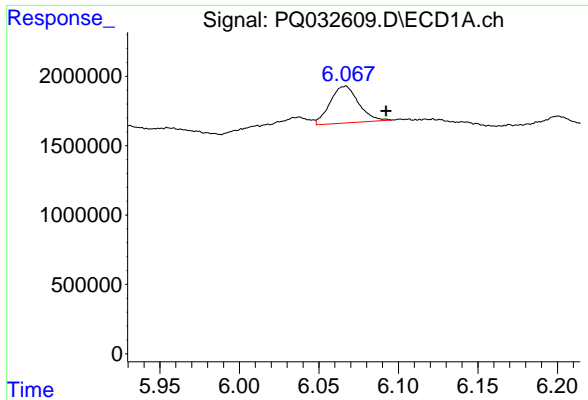
#16 AR-1242-1

R.T.: 0.000 min
 Exp R.T. : 5.338 min
 Response: 0
 Conc: N.D.



#16 AR-1242-1

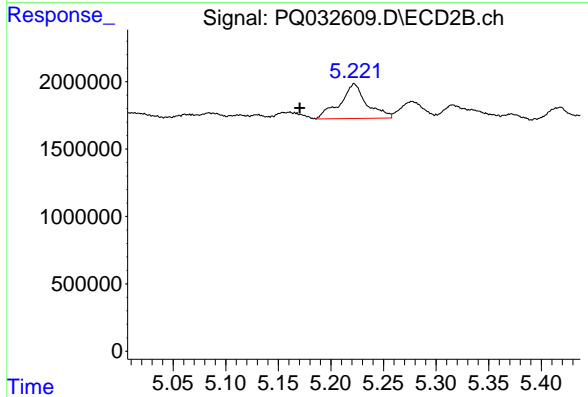
R.T.: 4.610 min
 Delta R.T.: 0.034 min
 Response: 2035489
 Conc: 102.40 ng/ml



#17 AR-1242-2

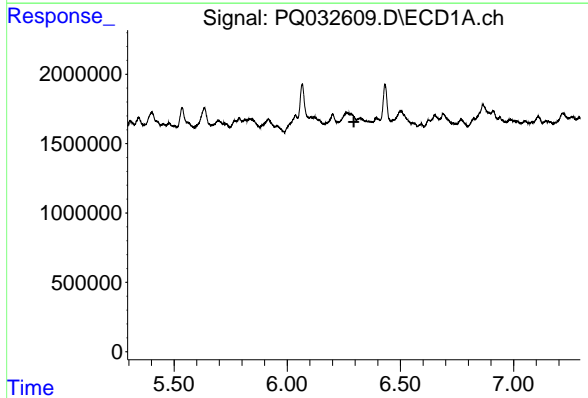
R.T.: 6.066 min
 Delta R.T.: -0.026 min
 Response: 3320100
 Conc: 91.45 ng/ml

Instrument :
 ECD_Q
 ClientSampled :



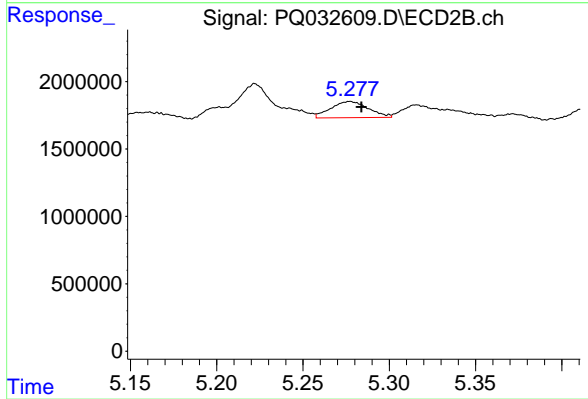
#17 AR-1242-2

R.T.: 5.222 min
 Delta R.T.: 0.052 min
 Response: 4522868
 Conc: 126.07 ng/ml



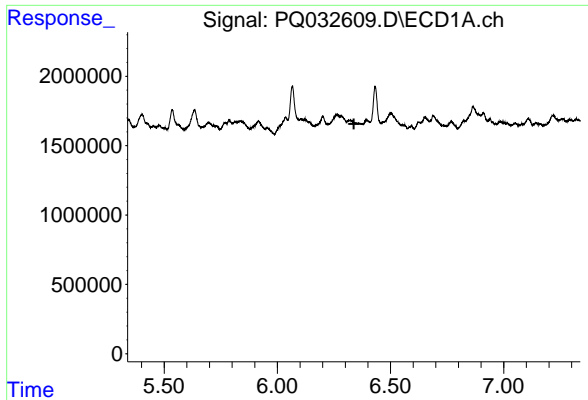
#18 AR-1242-3

R.T.: 0.000 min
 Exp R.T. : 6.294 min
 Response: 0
 Conc: N.D.



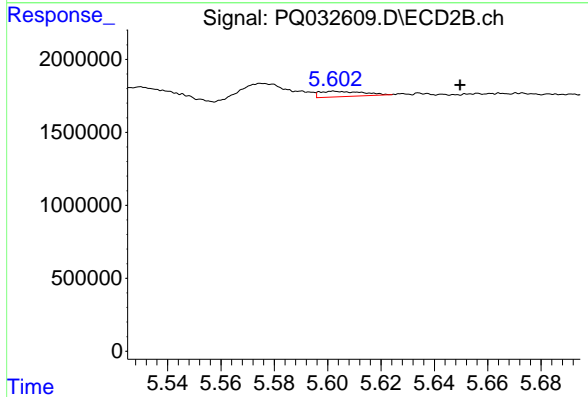
#18 AR-1242-3

R.T.: 5.277 min
 Delta R.T.: -0.007 min
 Response: 1824412
 Conc: 154.96 ng/ml

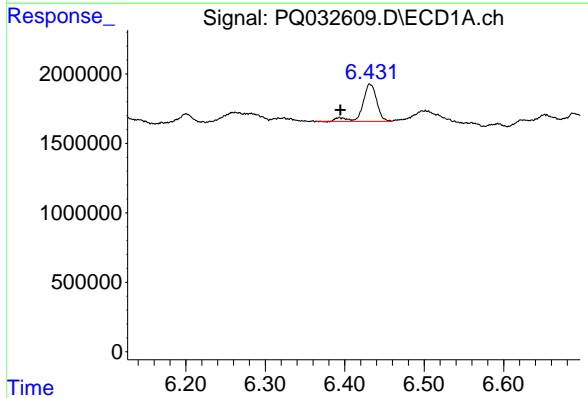


#19 AR-1242-4
 R.T.: 0.000 min
 Exp R.T.: 6.338 min
 Response: 0
 Conc: N.D.

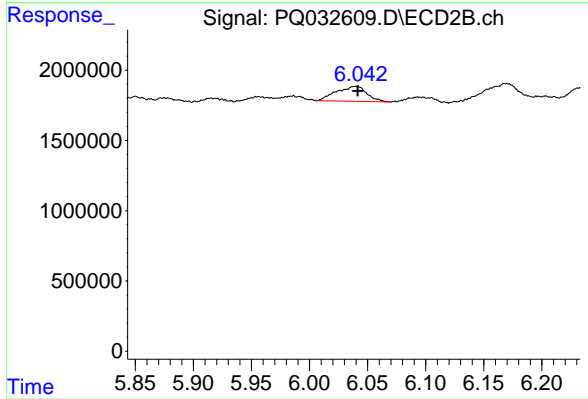
Instrument :
 ECD_Q
 ClientSampled :



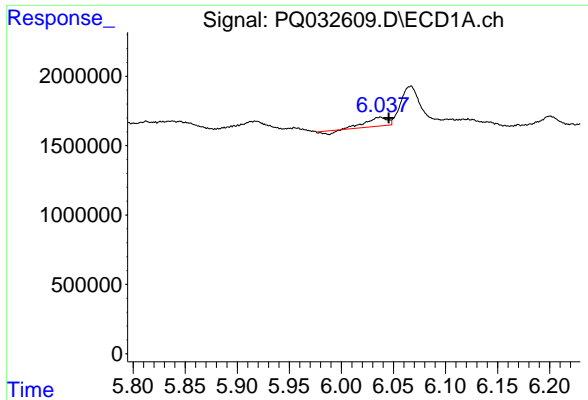
#19 AR-1242-4
 R.T.: 5.602 min
 Delta R.T.: -0.047 min
 Response: 414841
 Conc: 39.78 ng/ml



#20 AR-1242-5
 R.T.: 6.432 min
 Delta R.T.: 0.037 min
 Response: 3318640
 Conc: 73.04 ng/ml

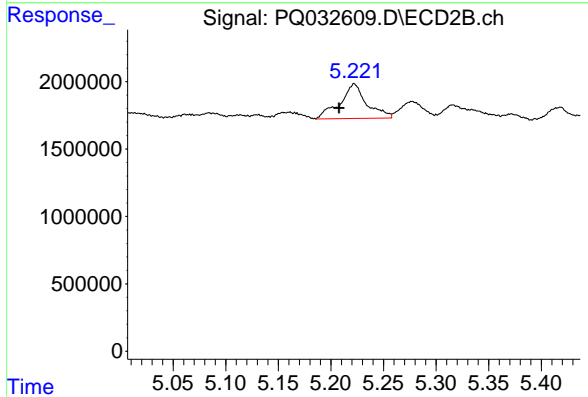


#20 AR-1242-5
 R.T.: 6.041 min
 Delta R.T.: 0.000 min
 Response: 1937842
 Conc: 81.64 ng/ml

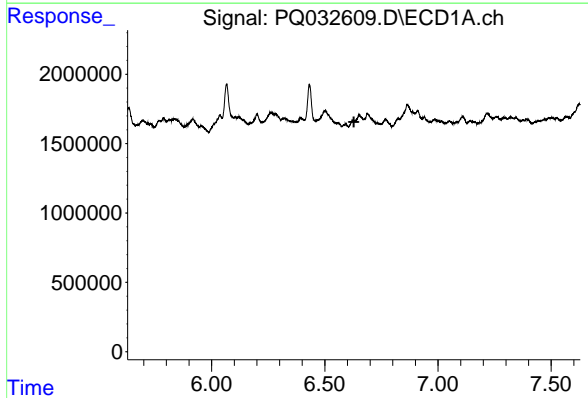


#21 AR-1248-1
 R.T.: 6.037 min
 Delta R.T.: -0.008 min
 Response: 800446
 Conc: 13.83 ng/ml

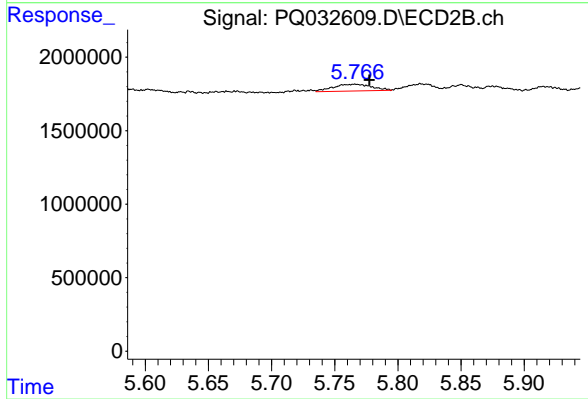
Instrument :
 ECD_Q
 ClientSampled :



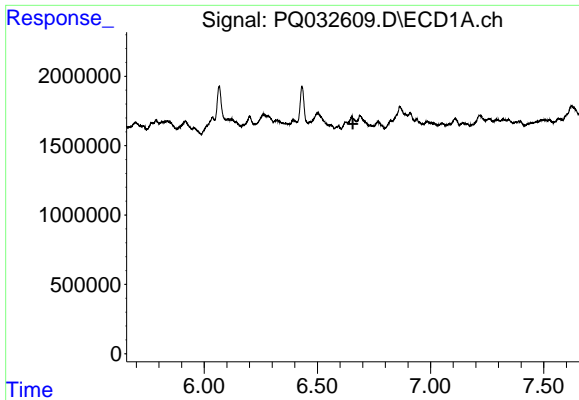
#21 AR-1248-1
 R.T.: 5.222 min
 Delta R.T.: 0.014 min
 Response: 4522868
 Conc: 91.96 ng/ml



#22 AR-1248-2
 R.T.: 0.000 min
 Exp R.T. : 6.629 min
 Response: 0
 Conc: N.D.



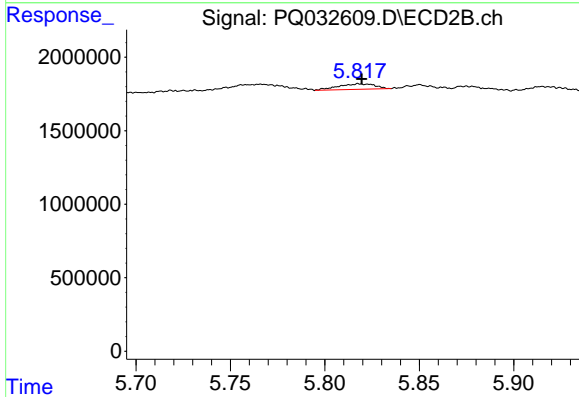
#22 AR-1248-2
 R.T.: 5.766 min
 Delta R.T.: -0.011 min
 Response: 977330
 Conc: 10.69 ng/ml



#23 AR-1248-3

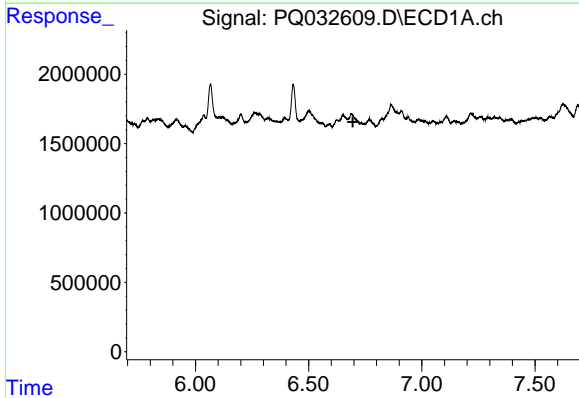
R.T.: 0.000 min
 Exp R.T. : 6.657 min
 Response: 0
 Conc: N.D.

Instrument :
 ECD_Q
 ClientSampled :



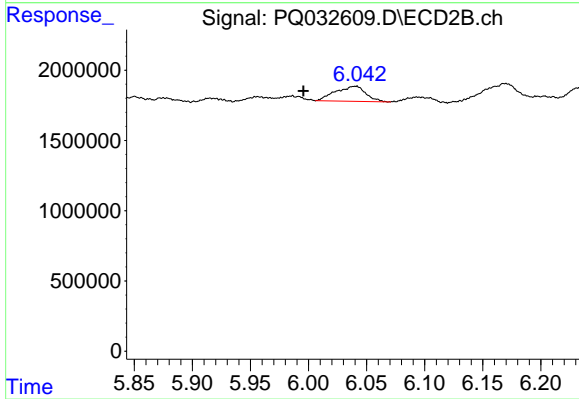
#23 AR-1248-3

R.T.: 5.818 min
 Delta R.T.: -0.002 min
 Response: 499243
 Conc: 7.89 ng/ml



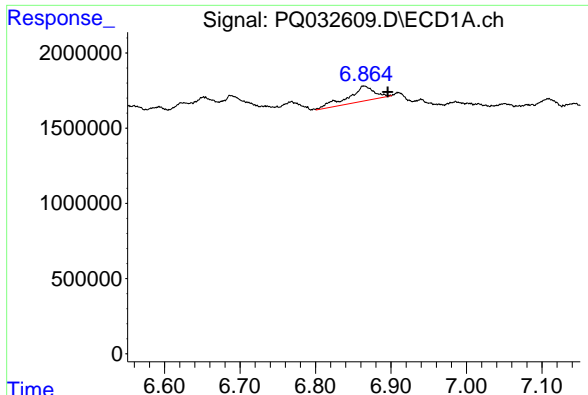
#24 AR-1248-4

R.T.: 0.000 min
 Exp R.T. : 6.696 min
 Response: 0
 Conc: N.D.



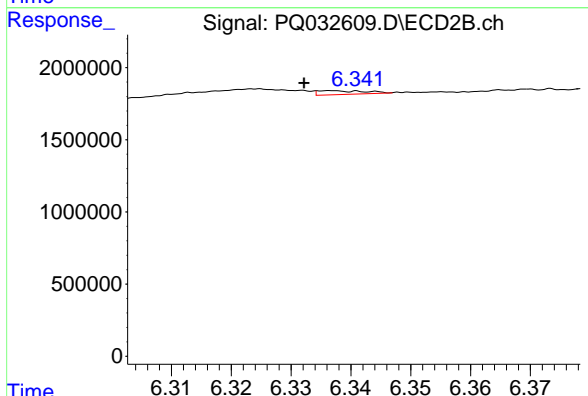
#24 AR-1248-4

R.T.: 6.041 min
 Delta R.T.: 0.046 min
 Response: 1937842
 Conc: 35.52 ng/ml

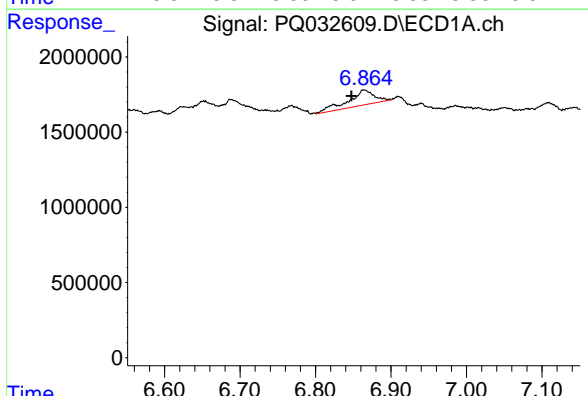


#25 AR-1248-5
 R.T.: 6.864 min
 Delta R.T.: -0.031 min
 Response: 2422194
 Conc: 52.96 ng/ml

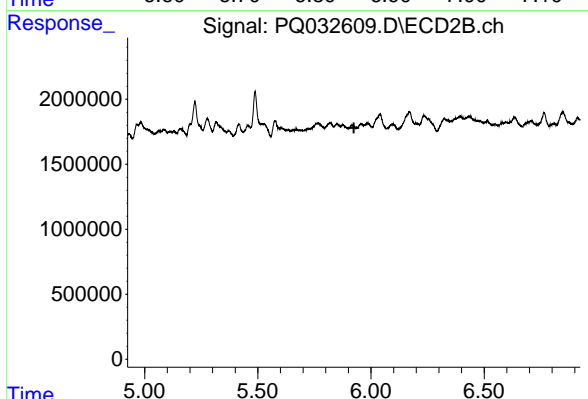
Instrument :
 ECD_Q
 ClientSampleId :



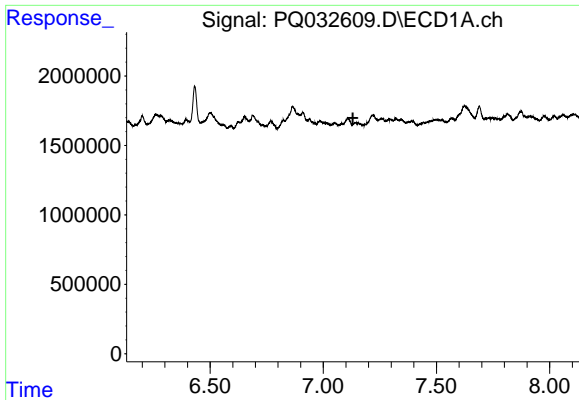
#25 AR-1248-5
 R.T.: 6.337 min
 Delta R.T.: 0.005 min
 Response: 141397
 Conc: 3.47 ng/ml



#26 AR-1254-1
 R.T.: 6.864 min
 Delta R.T.: 0.017 min
 Response: 2422194
 Conc: 14.61 ng/ml



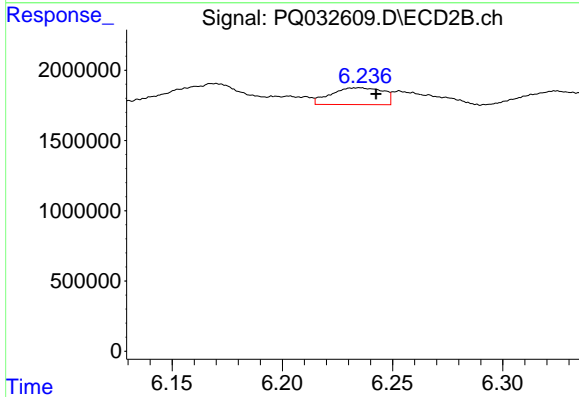
#26 AR-1254-1
 R.T.: 0.000 min
 Exp R.T. : 5.924 min
 Response: 0
 Conc: N.D.



#27 AR-1254-2

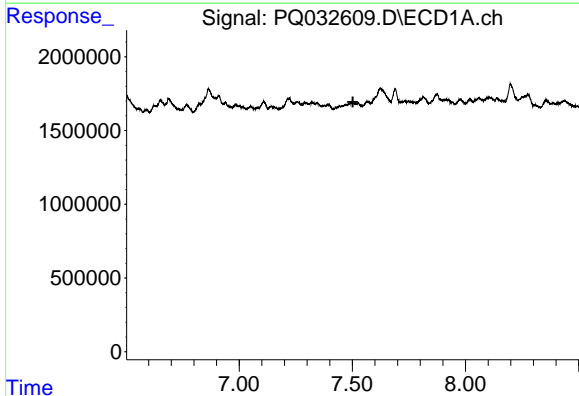
R.T.: 0.000 min
 Exp R.T. : 7.131 min
 Response: 0
 Conc: N.D.

Instrument :
 ECD_Q
 ClientSampled :



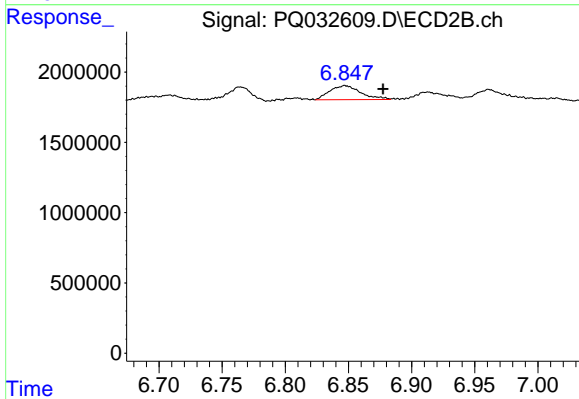
#27 AR-1254-2

R.T.: 6.235 min
 Delta R.T.: -0.007 min
 Response: 1952035
 Conc: 19.75 ng/ml



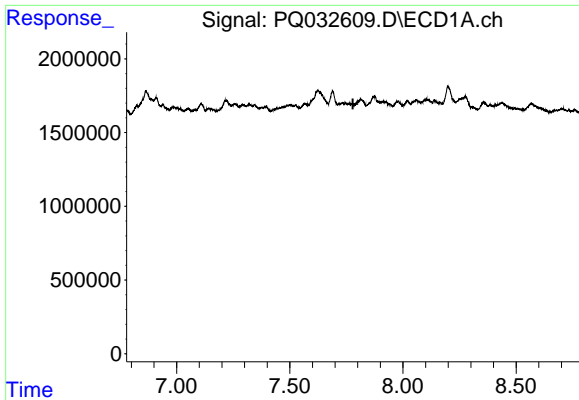
#29 AR-1254-4

R.T.: 0.000 min
 Exp R.T. : 7.503 min
 Response: 0
 Conc: N.D.



#29 AR-1254-4

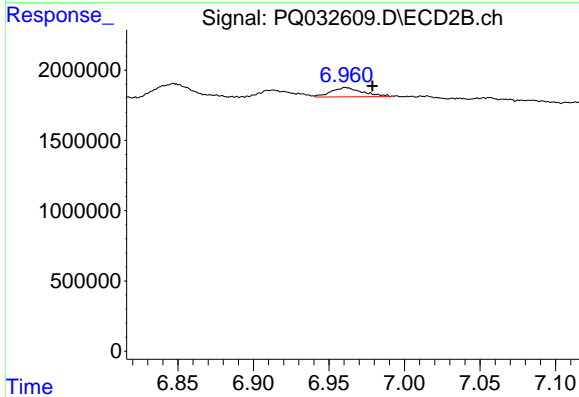
R.T.: 6.847 min
 Delta R.T.: -0.031 min
 Response: 1693963
 Conc: 19.26 ng/ml



#30 AR-1254-5

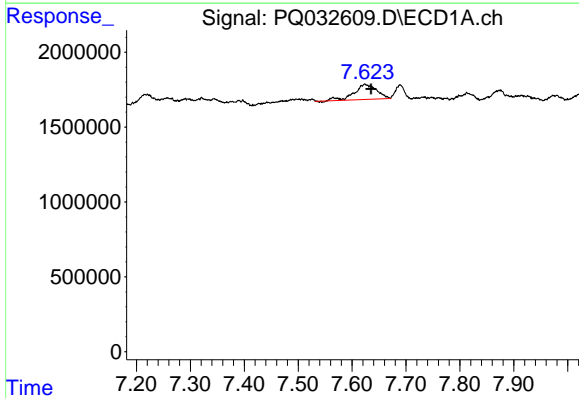
R.T.: 0.000 min
 Exp R.T.: 7.779 min
 Response: 0
 Conc: N.D.

Instrument :
 ECD_Q
 ClientSampleId :



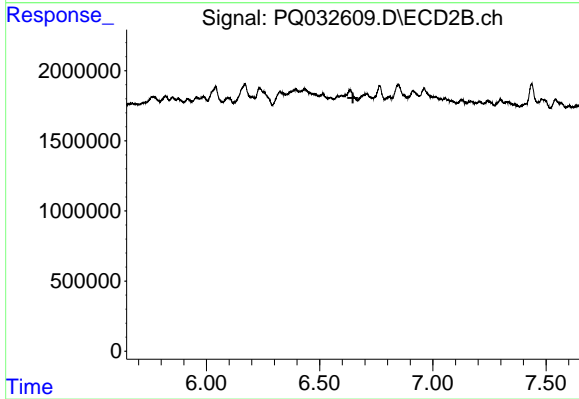
#30 AR-1254-5

R.T.: 6.961 min
 Delta R.T.: -0.018 min
 Response: 959367
 Conc: 5.52 ng/ml



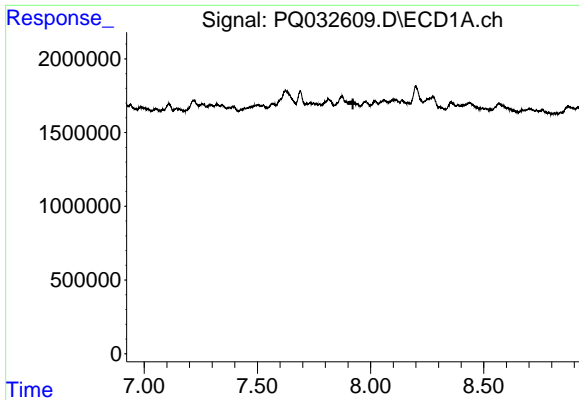
#32 AR-1260-2

R.T.: 7.624 min
 Delta R.T.: -0.012 min
 Response: 2869893
 Conc: 21.39 ng/ml



#32 AR-1260-2

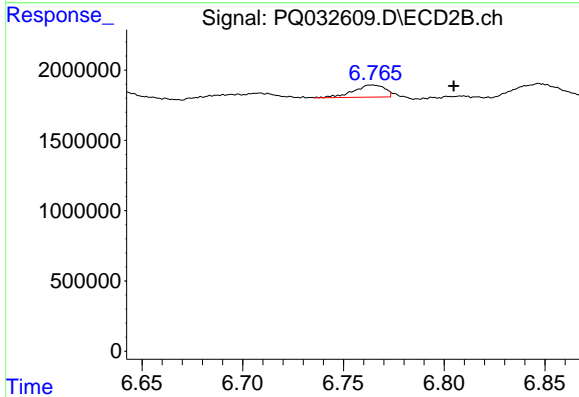
R.T.: 0.000 min
 Exp R.T.: 6.647 min
 Response: 0
 Conc: N.D.



#33 AR-1260-3

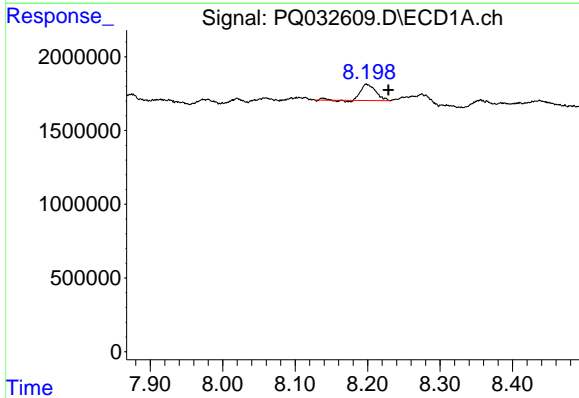
R.T.: 0.000 min
 Exp R.T.: 7.922 min
 Response: 0
 Conc: N.D.

Instrument :
 ECD_Q
 ClientSampleId :



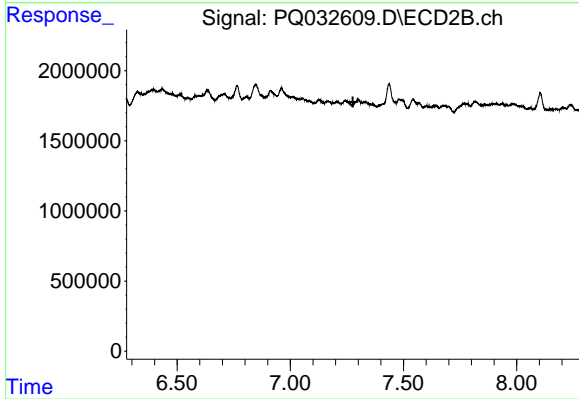
#33 AR-1260-3

R.T.: 6.764 min
 Delta R.T.: -0.040 min
 Response: 924133
 Conc: 7.66 ng/ml



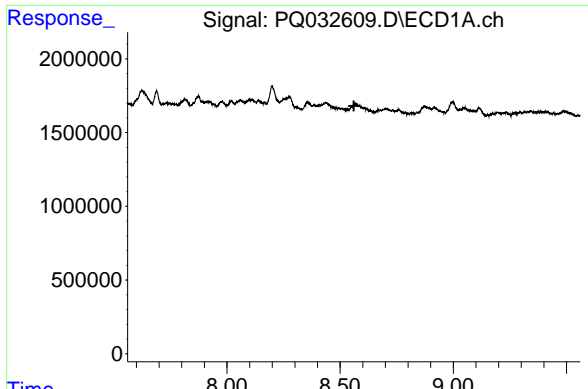
#34 AR-1260-4

R.T.: 8.198 min
 Delta R.T.: -0.030 min
 Response: 1598030
 Conc: 13.99 ng/ml



#34 AR-1260-4

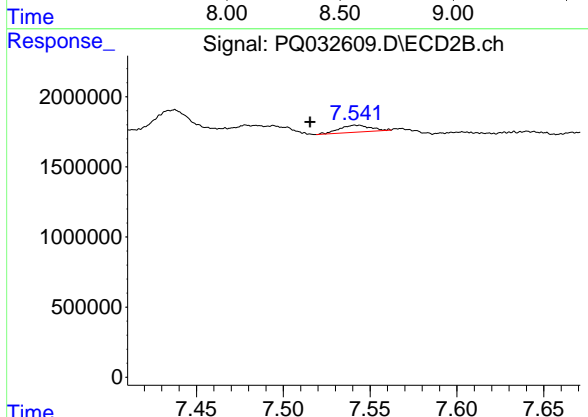
R.T.: 0.000 min
 Exp R.T.: 7.276 min
 Response: 0
 Conc: N.D.



#35 AR-1260-5

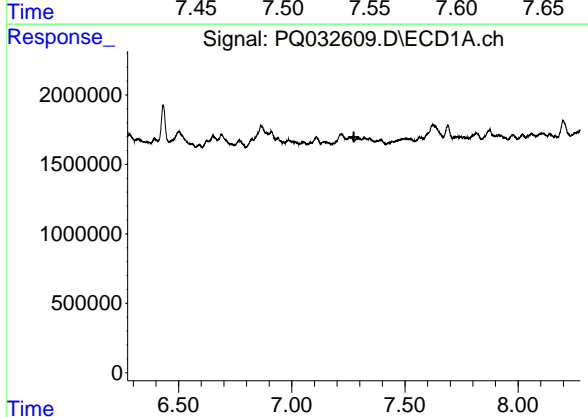
R.T.: 0.000 min
 Exp R.T.: 8.561 min
 Response: 0
 Conc: N.D.

Instrument :
 ECD_Q
 ClientSampled :



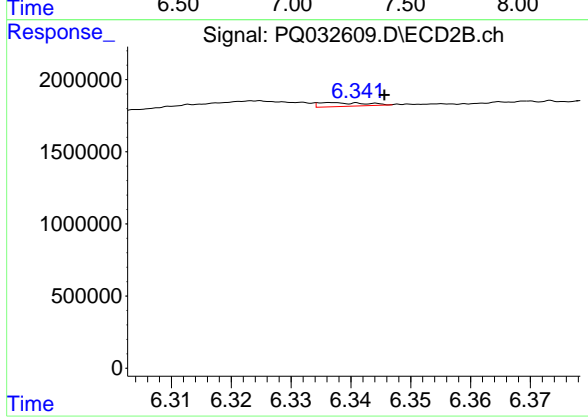
#35 AR-1260-5

R.T.: 7.541 min
 Delta R.T.: 0.026 min
 Response: 621247
 Conc: 2.60 ng/ml



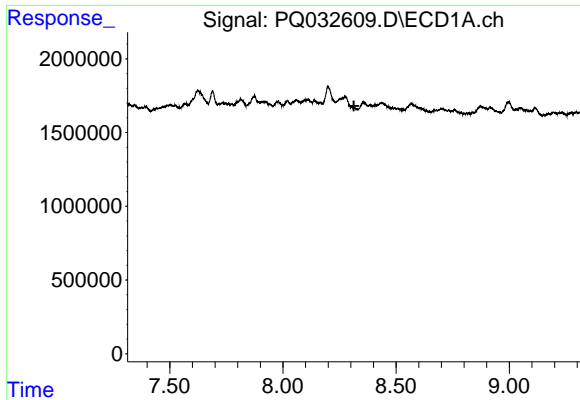
#36 AR-1262-1

R.T.: 0.000 min
 Exp R.T.: 7.274 min
 Response: 0
 Conc: N.D.



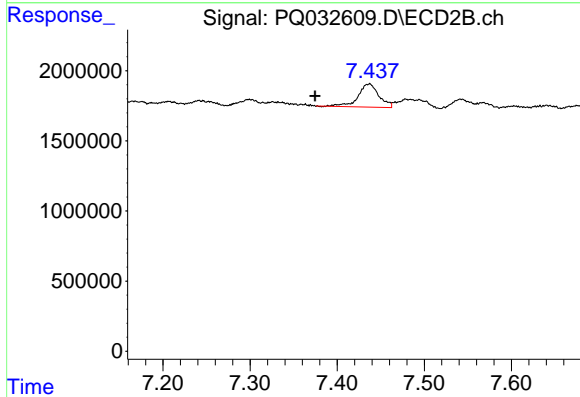
#36 AR-1262-1

R.T.: 6.337 min
 Delta R.T.: -0.009 min
 Response: 141397
 Conc: 2.69 ng/ml

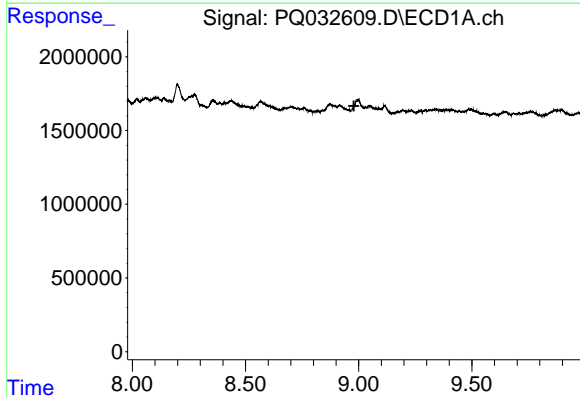


#38 AR-1262-3
 R.T.: 0.000 min
 Exp R.T.: 8.313 min
 Response: 0
 Conc: N.D.

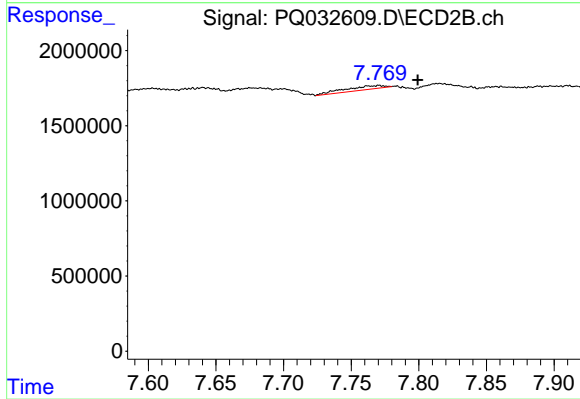
Instrument :
 ECD_Q
 ClientSampled :



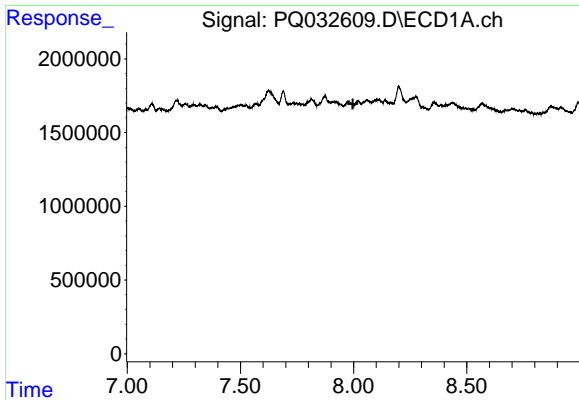
#38 AR-1262-3
 R.T.: 7.438 min
 Delta R.T.: 0.063 min
 Response: 2734350
 Conc: 50.06 ng/ml



#39 AR-1262-4
 R.T.: 0.000 min
 Exp R.T.: 8.979 min
 Response: 0
 Conc: N.D.



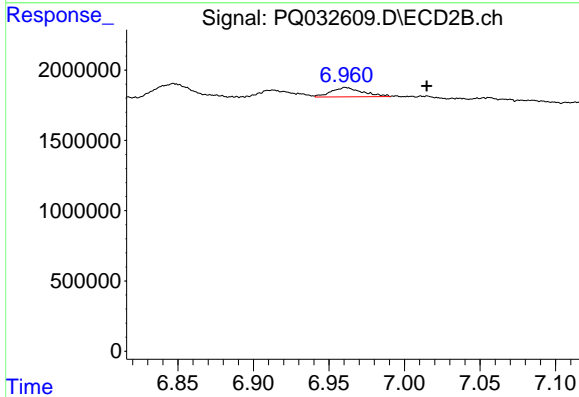
#39 AR-1262-4
 R.T.: 7.771 min
 Delta R.T.: -0.029 min
 Response: 499358
 Conc: 5.59 ng/ml



#41 AR-1268-1

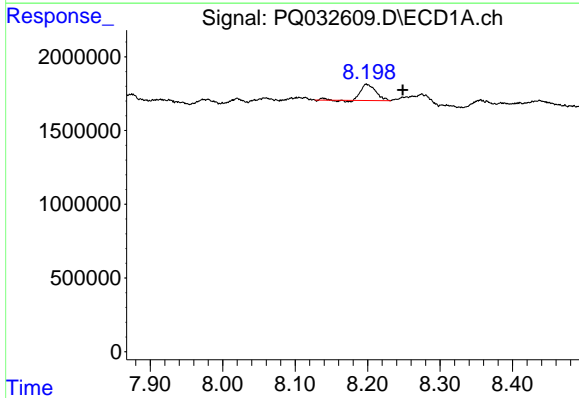
R.T.: 0.000 min
 Exp R.T.: 7.997 min
 Response: 0
 Conc: N.D.

Instrument :
 ECD_Q
 ClientSampleId :



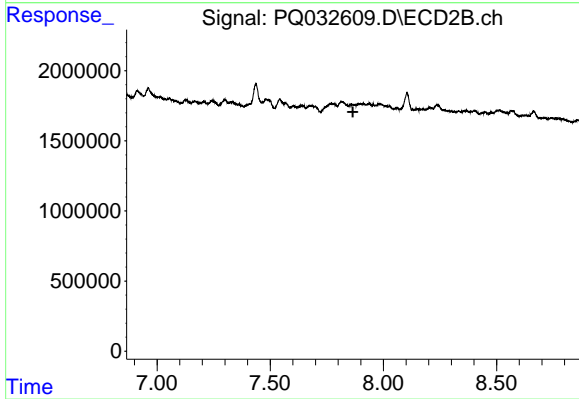
#41 AR-1268-1

R.T.: 6.961 min
 Delta R.T.: -0.054 min
 Response: 959367
 Conc: 19.04 ng/ml



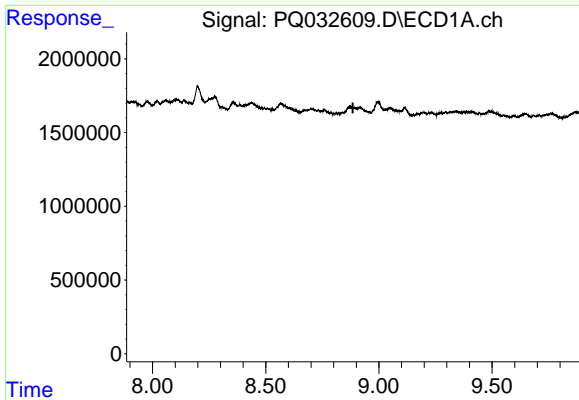
#42 AR-1268-2

R.T.: 8.198 min
 Delta R.T.: -0.050 min
 Response: 1598030
 Conc: 23.47 ng/ml



#42 AR-1268-2

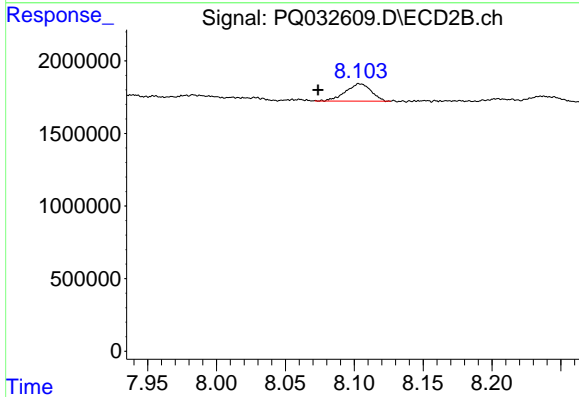
R.T.: 0.000 min
 Exp R.T.: 7.865 min
 Response: 0
 Conc: N.D.



#43 AR-1268-3

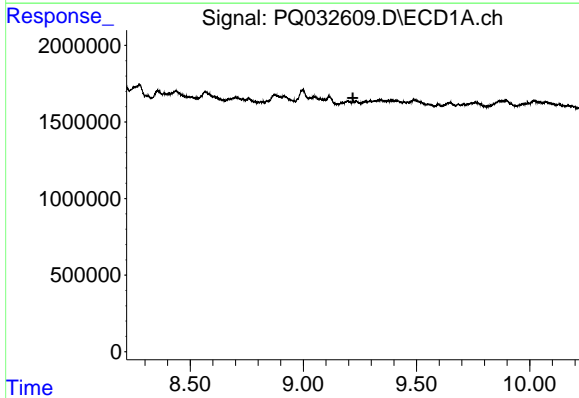
R.T.: 0.000 min
 Exp R.T.: 8.885 min
 Response: 0
 Conc: N.D.

Instrument :
 ECD_Q
 ClientSampled :



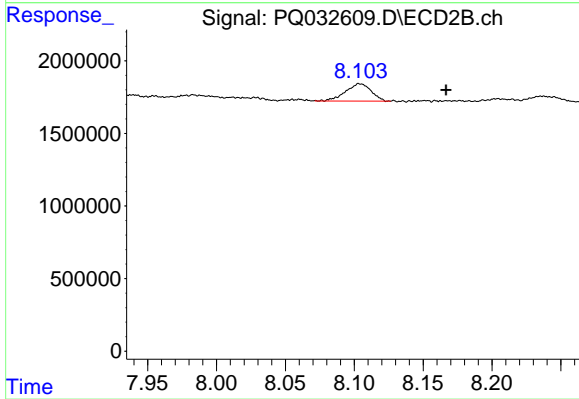
#43 AR-1268-3

R.T.: 8.103 min
 Delta R.T.: 0.030 min
 Response: 1548719
 Conc: 7.09 ng/ml



#44 AR-1268-4

R.T.: 0.000 min
 Exp R.T.: 9.219 min
 Response: 0
 Conc: N.D.



#44 AR-1268-4

R.T.: 8.103 min
 Delta R.T.: -0.063 min
 Response: 1548719
 Conc: 26.96 ng/ml