

Data Path : Z:\pestpcbsrv\HPCHEM1\ECD\_Q\Data\PQ100318\  
 Data File : PQ032570.D  
 Signal(s) : Signal #1: ECD1A.ch Signal #2: ECD2B.ch  
 Acq On : 03 Oct 2018 11:24  
 Operator : SM\SJ  
 Sample : PB113403BS  
 Misc :  
 ALS Vial : 11 Sample Multiplier: 1

Instrument :  
 ECD\_Q  
 ClientSampleId :  
 PB113403BS

Integration File signal 1: autoint1.e  
 Integration File signal 2: autoint2.e  
 Quant Time: Oct 03 11:36:46 2018  
 Quant Method : Z:\pestpcbsrv\HPCHEM1\ECD\_Q\Method\PQ091818.M  
 Quant Title : GC EXTRACTABLES  
 QLast Update : Wed Sep 19 02:07:33 2018  
 Response via : Initial Calibration  
 Integrator: ChemStation

Volume Inj. : 2 µl  
 Signal #1 Phase : ZB-MR2 Signal #2 Phase: ZB-MR2  
 Signal #1 Info : 30Mx0.32mmx 0.50µ Signal #2 Info : 30M x 0.32mm x 0.25µm

| Compound                    | RT#1   | RT#2  | Resp#1   | Resp#2   | ng/ml   | ng/ml   |
|-----------------------------|--------|-------|----------|----------|---------|---------|
| -----                       |        |       |          |          |         |         |
| System Monitoring Compounds |        |       |          |          |         |         |
| 1) SA Tetrachlo...          | 4.590  | 3.868 | 42562495 | 33095224 | 18.356  | 16.525  |
| 2) SA Decachlor...          | 10.443 | 8.938 | 39650567 | 35160057 | 19.020  | 18.157m |
| Target Compounds            |        |       |          |          |         |         |
| 3) L1 AR-1016-1             | 5.303  | 4.550 | 11222644 | 9096063  | 212.059 | 188.519 |
| 4) L1 AR-1016-2             | 5.500  | 4.965 | 11084620 | 13170883 | 211.377 | 195.176 |
| 5) L1 AR-1016-3             | 5.769  | 4.984 | 15986259 | 18485371 | 216.756 | 197.851 |
| 6) L1 AR-1016-4             | 5.854  | 5.041 | 14711496 | 12066421 | 215.515 | 203.236 |
| 7) L1 AR-1016-5             | 6.248  | 5.418 | 12156133 | 10808894 | 223.226 | 206.821 |
| 31) L7 AR-1260-1            | 7.375  | 6.453 | 25314592 | 22953928 | 217.031 | 214.236 |
| 32) L7 AR-1260-2            | 7.632  | 6.639 | 30045261 | 27607158 | 223.894 | 213.439 |
| 33) L7 AR-1260-3            | 7.917  | 6.796 | 35660562 | 23988228 | 230.143 | 198.785 |
| 34) L7 AR-1260-4            | 8.225  | 7.267 | 23058313 | 18658047 | 201.847 | 190.483 |
| 35) L7 AR-1260-5            | 8.556  | 7.507 | 42003035 | 42834305 | 184.392 | 179.374 |
| -----                       |        |       |          |          |         |         |

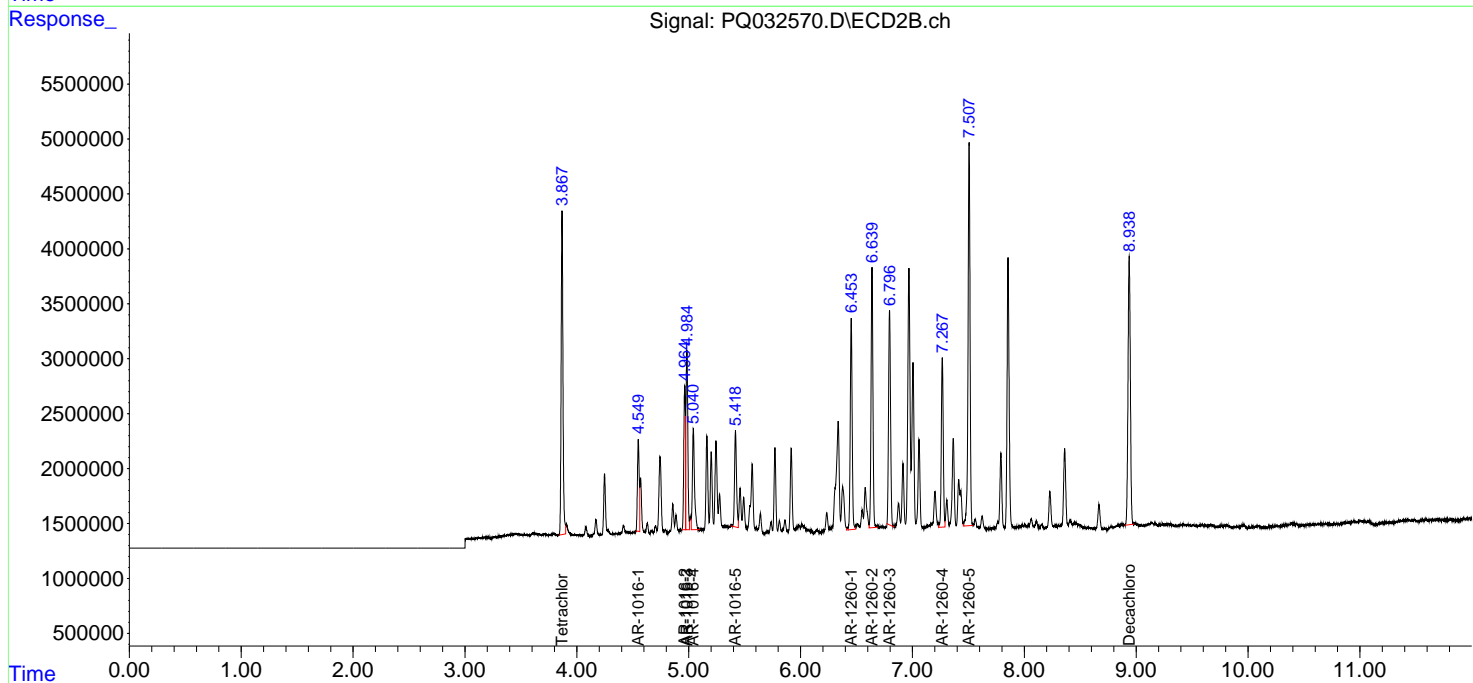
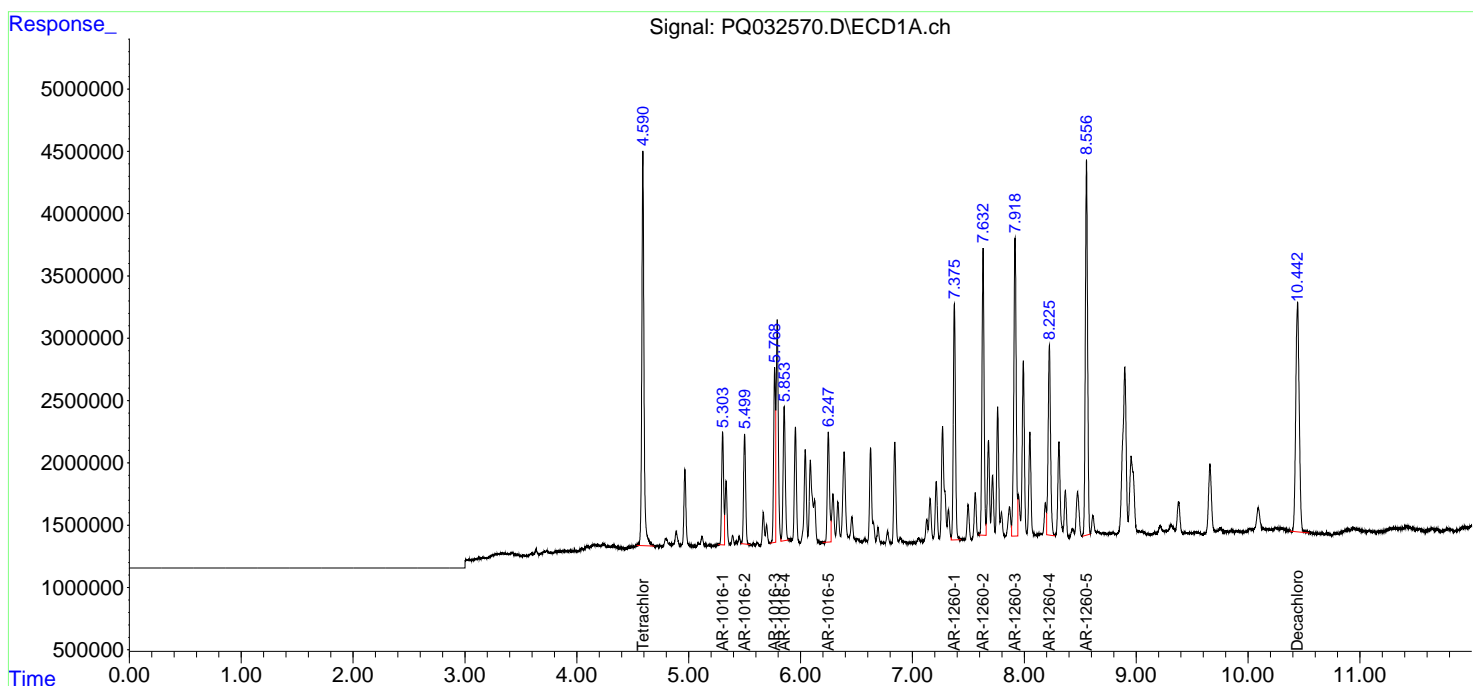
(f)=RT Delta > 1/2 Window (#)=Amounts differ by > 25% (m)=manual int.

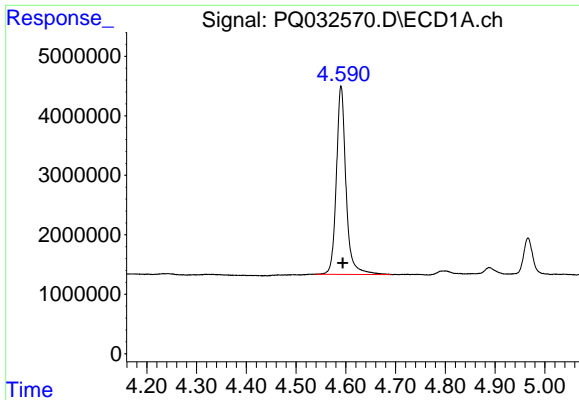
Data Path : Z:\pestpcbsrv\HPCHEM1\ECD\_Q\Data\PQ100318\  
 Data File : PQ032570.D  
 Signal(s) : Signal #1: ECD1A.ch Signal #2: ECD2B.ch  
 Acq On : 03 Oct 2018 11:24  
 Operator : SM\SJ  
 Sample : PB113403BS  
 Misc :  
 ALS Vial : 11 Sample Multiplier: 1

Instrument :  
 ECD\_Q  
 ClientSampleID :  
 PB113403BS

Integration File signal 1: autoint1.e  
 Integration File signal 2: autoint2.e  
 Quant Time: Oct 03 11:36:46 2018  
 Quant Method : Z:\pestpcbsrv\HPCHEM1\ECD\_Q\Method\PQ091818.M  
 Quant Title : GC EXTRACTABLES  
 QLast Update : Wed Sep 19 02:07:33 2018  
 Response via : Initial Calibration  
 Integrator: ChemStation

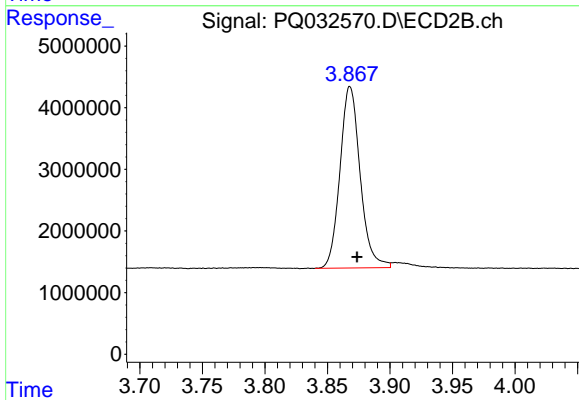
Volume Inj. : 2 µl  
 Signal #1 Phase : ZB-MR1 Signal #2 Phase: ZB-MR2  
 Signal #1 Info : 30Mx0.32mmx 0.50µ Signal #2 Info : 30M x 0.32mm x 0.25µm



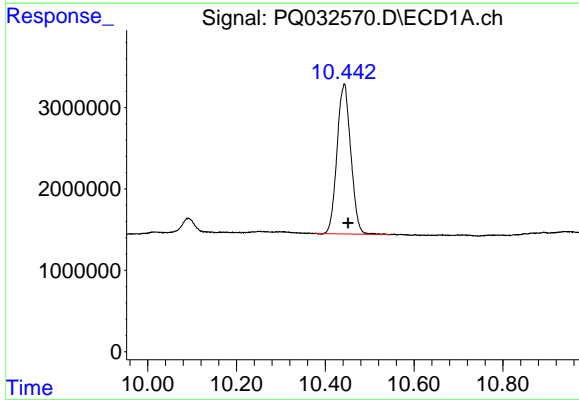


#1 Tetrachloro-m-xylene  
 R.T.: 4.590 min  
 Delta R.T.: -0.004 min  
 Response: 42562495  
 Conc: 18.36 ng/ml

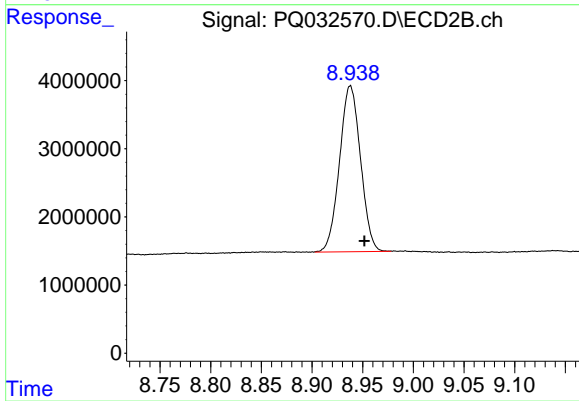
Instrument :  
 ECD\_Q  
 ClientSampleId :  
 PB113403BS



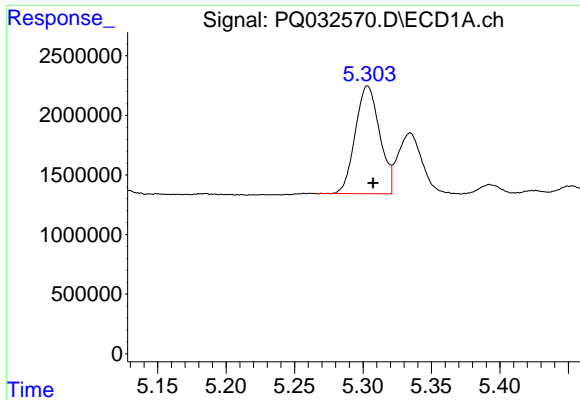
#1 Tetrachloro-m-xylene  
 R.T.: 3.868 min  
 Delta R.T.: -0.006 min  
 Response: 33095224  
 Conc: 16.53 ng/ml



#2 Decachlorobiphenyl  
 R.T.: 10.443 min  
 Delta R.T.: -0.008 min  
 Response: 39650567  
 Conc: 19.02 ng/ml



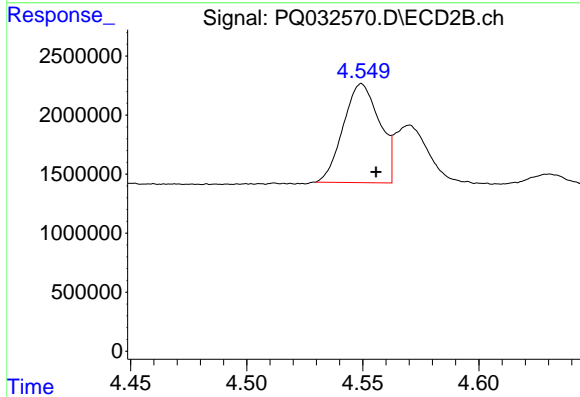
#2 Decachlorobiphenyl  
 R.T.: 8.938 min  
 Delta R.T.: -0.014 min  
 Response: 35160057  
 Conc: 18.16 ng/ml m



#3 AR-1016-1

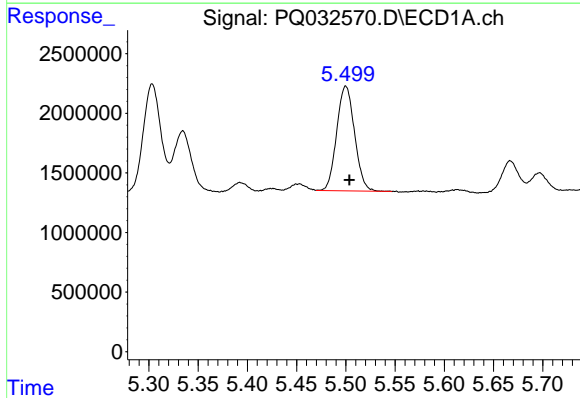
R.T.: 5.303 min  
 Delta R.T.: -0.004 min  
 Response: 11222644  
 Conc: 212.06 ng/ml

Instrument :  
 ECD\_Q  
 ClientSampleId :  
 PB113403BS



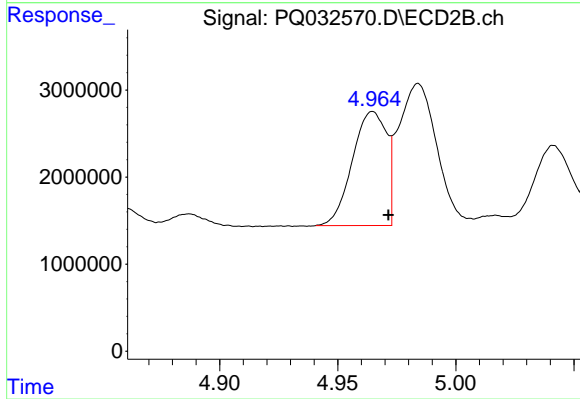
#3 AR-1016-1

R.T.: 4.550 min  
 Delta R.T.: -0.006 min  
 Response: 9096063  
 Conc: 188.52 ng/ml



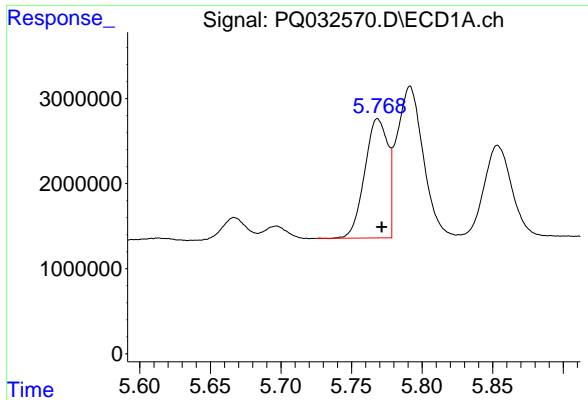
#4 AR-1016-2

R.T.: 5.500 min  
 Delta R.T.: -0.004 min  
 Response: 11084620  
 Conc: 211.38 ng/ml



#4 AR-1016-2

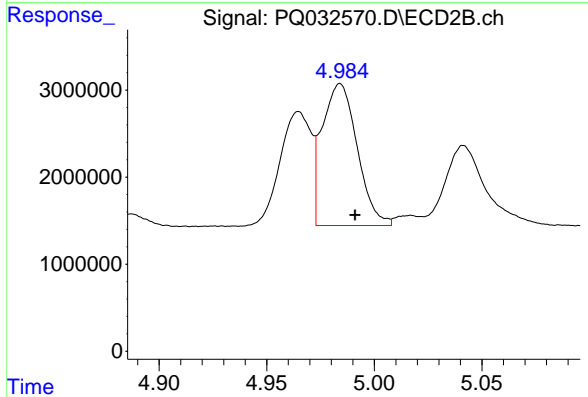
R.T.: 4.965 min  
 Delta R.T.: -0.007 min  
 Response: 13170883  
 Conc: 195.18 ng/ml



#5 AR-1016-3

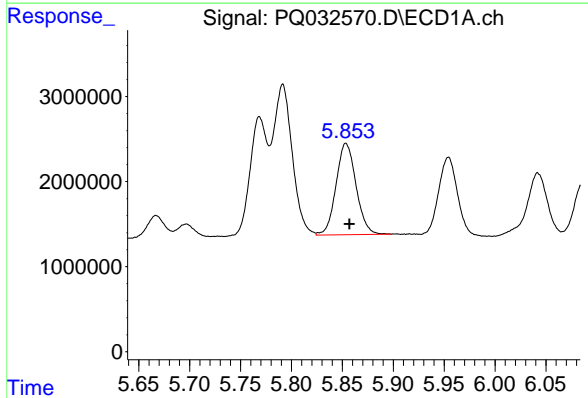
R.T.: 5.769 min  
 Delta R.T.: -0.003 min  
 Response: 15986259  
 Conc: 216.76 ng/ml

Instrument :  
 ECD\_Q  
 ClientSampleId :  
 PB113403BS



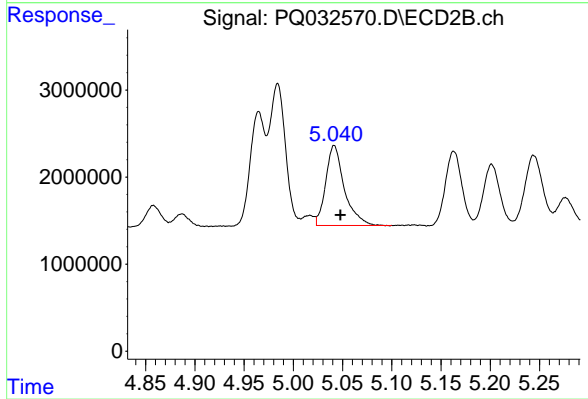
#5 AR-1016-3

R.T.: 4.984 min  
 Delta R.T.: -0.007 min  
 Response: 18485371  
 Conc: 197.85 ng/ml



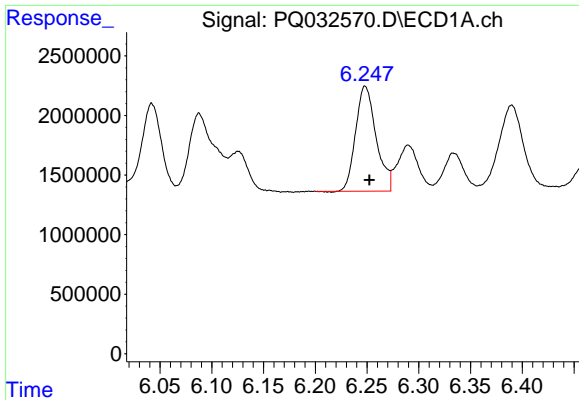
#6 AR-1016-4

R.T.: 5.854 min  
 Delta R.T.: -0.004 min  
 Response: 14711496  
 Conc: 215.52 ng/ml



#6 AR-1016-4

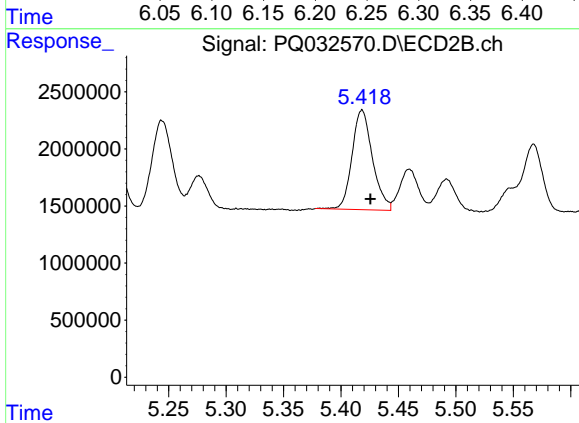
R.T.: 5.041 min  
 Delta R.T.: -0.006 min  
 Response: 12066421  
 Conc: 203.24 ng/ml



#7 AR-1016-5

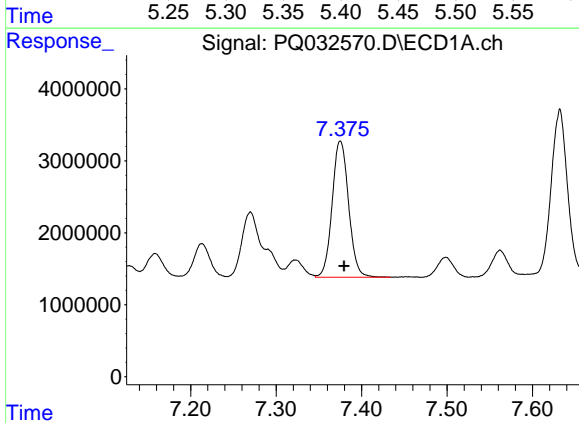
R.T.: 6.248 min  
 Delta R.T.: -0.004 min  
 Response: 12156133  
 Conc: 223.23 ng/ml

Instrument :  
 ECD\_Q  
 ClientSampleId :  
 PB113403BS



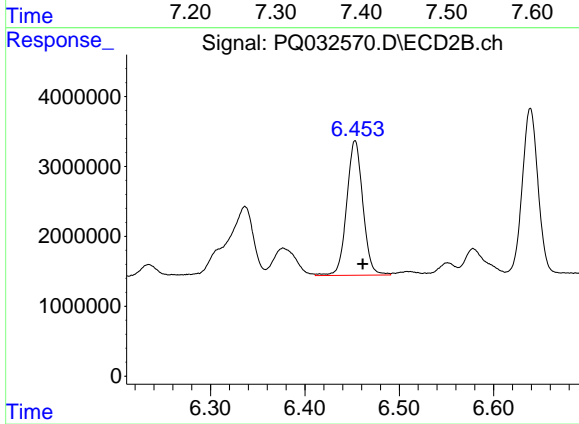
#7 AR-1016-5

R.T.: 5.418 min  
 Delta R.T.: -0.007 min  
 Response: 10808894  
 Conc: 206.82 ng/ml



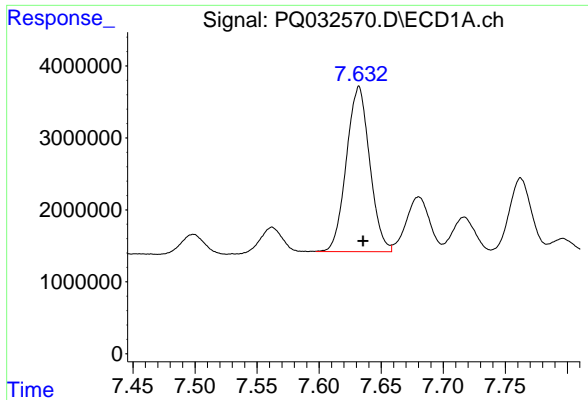
#31 AR-1260-1

R.T.: 7.375 min  
 Delta R.T.: -0.005 min  
 Response: 25314592  
 Conc: 217.03 ng/ml



#31 AR-1260-1

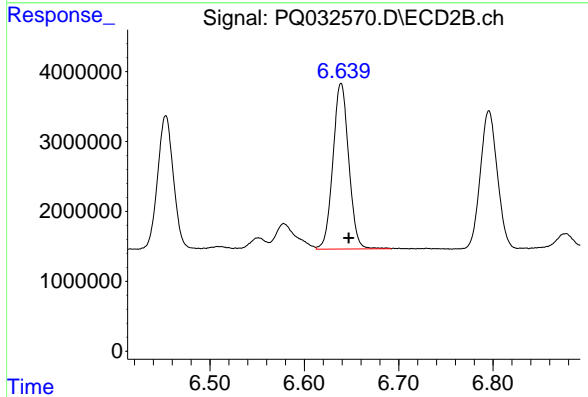
R.T.: 6.453 min  
 Delta R.T.: -0.008 min  
 Response: 22953928  
 Conc: 214.24 ng/ml



#32 AR-1260-2

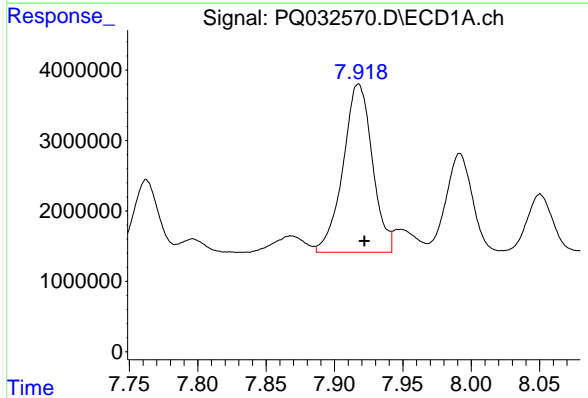
R.T.: 7.632 min  
 Delta R.T.: -0.003 min  
 Response: 30045261  
 Conc: 223.89 ng/ml

Instrument :  
 ECD\_Q  
 ClientSampleId :  
 PB113403BS



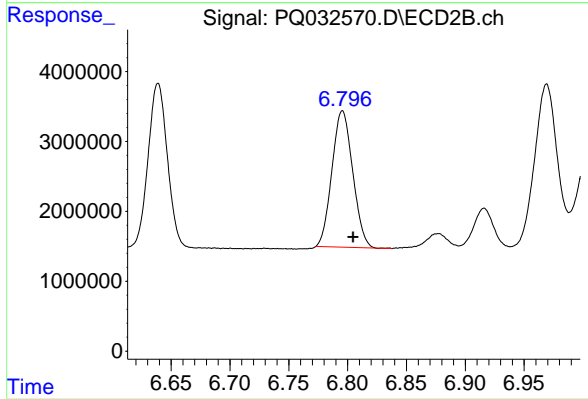
#32 AR-1260-2

R.T.: 6.639 min  
 Delta R.T.: -0.008 min  
 Response: 27607158  
 Conc: 213.44 ng/ml



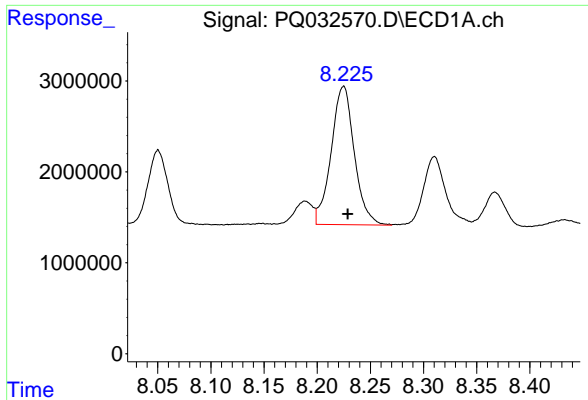
#33 AR-1260-3

R.T.: 7.917 min  
 Delta R.T.: -0.004 min  
 Response: 35660562  
 Conc: 230.14 ng/ml



#33 AR-1260-3

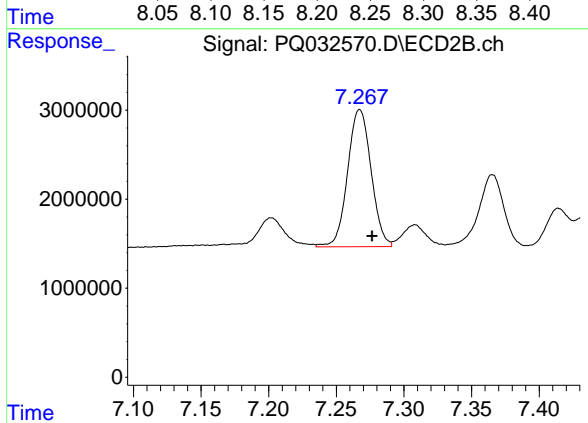
R.T.: 6.796 min  
 Delta R.T.: -0.009 min  
 Response: 23988228  
 Conc: 198.79 ng/ml



#34 AR-1260-4

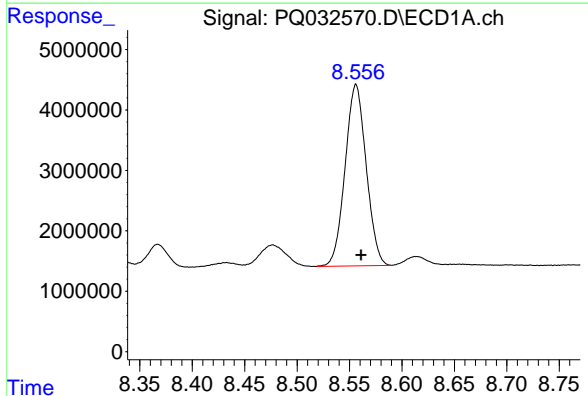
R.T.: 8.225 min  
Delta R.T.: -0.004 min  
Response: 23058313  
Conc: 201.85 ng/ml

Instrument :  
ECD\_Q  
ClientSampleId :  
PB113403BS



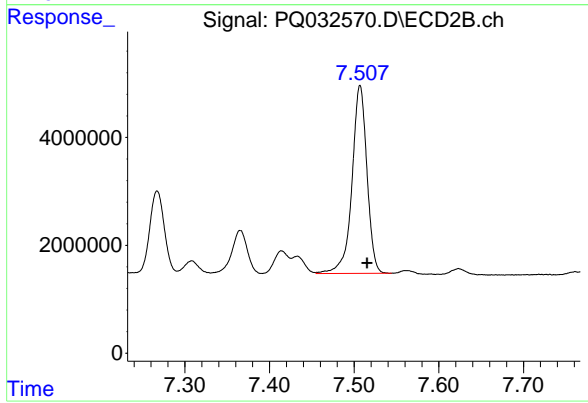
#34 AR-1260-4

R.T.: 7.267 min  
Delta R.T.: -0.009 min  
Response: 18658047  
Conc: 190.48 ng/ml



#35 AR-1260-5

R.T.: 8.556 min  
Delta R.T.: -0.005 min  
Response: 42003035  
Conc: 184.39 ng/ml



#35 AR-1260-5

R.T.: 7.507 min  
Delta R.T.: -0.008 min  
Response: 42834305  
Conc: 179.37 ng/ml