

Data Path : Z:\pestpcbsrv\HPCHEM1\ECD_Q\Data\PQ100318\
 Data File : PQ032575.D
 Signal(s) : Signal #1: ECD1A.ch Signal #2: ECD2B.ch
 Acq On : 03 Oct 2018 12:36
 Operator : SM\SJ
 Sample : J5170-25
 Misc :
 ALS Vial : 16 Sample Multiplier: 1

Instrument :
 ECD_Q
 ClientSampleId :
 HC-SOIL-5

Integration File signal 1: autoint1.e
 Integration File signal 2: autoint2.e
 Quant Time: Oct 04 02:21:40 2018
 Quant Method : Z:\pestpcbsrv\HPCHEM1\ECD_Q\Method\PQ091818.M
 Quant Title : GC EXTRACTABLES
 QLast Update : Wed Sep 19 02:07:33 2018
 Response via : Initial Calibration
 Integrator: ChemStation

Volume Inj. : 2 µl
 Signal #1 Phase : ZB-MR1 Signal #2 Phase: ZB-MR2
 Signal #1 Info : 30Mx0.32mmx 0.50µ Signal #2 Info : 30M x 0.32mm x 0.25µm

Compound	RT#1	RT#2	Resp#1	Resp#2	ng/ml	ng/ml

System Monitoring Compounds						
1) SA Tetrachlo...	4.589	3.867	40941449	32512428	17.657	16.234
2) SA Decachlor...	10.441	8.936	25887163	22002712	12.418	11.363m

Target Compounds

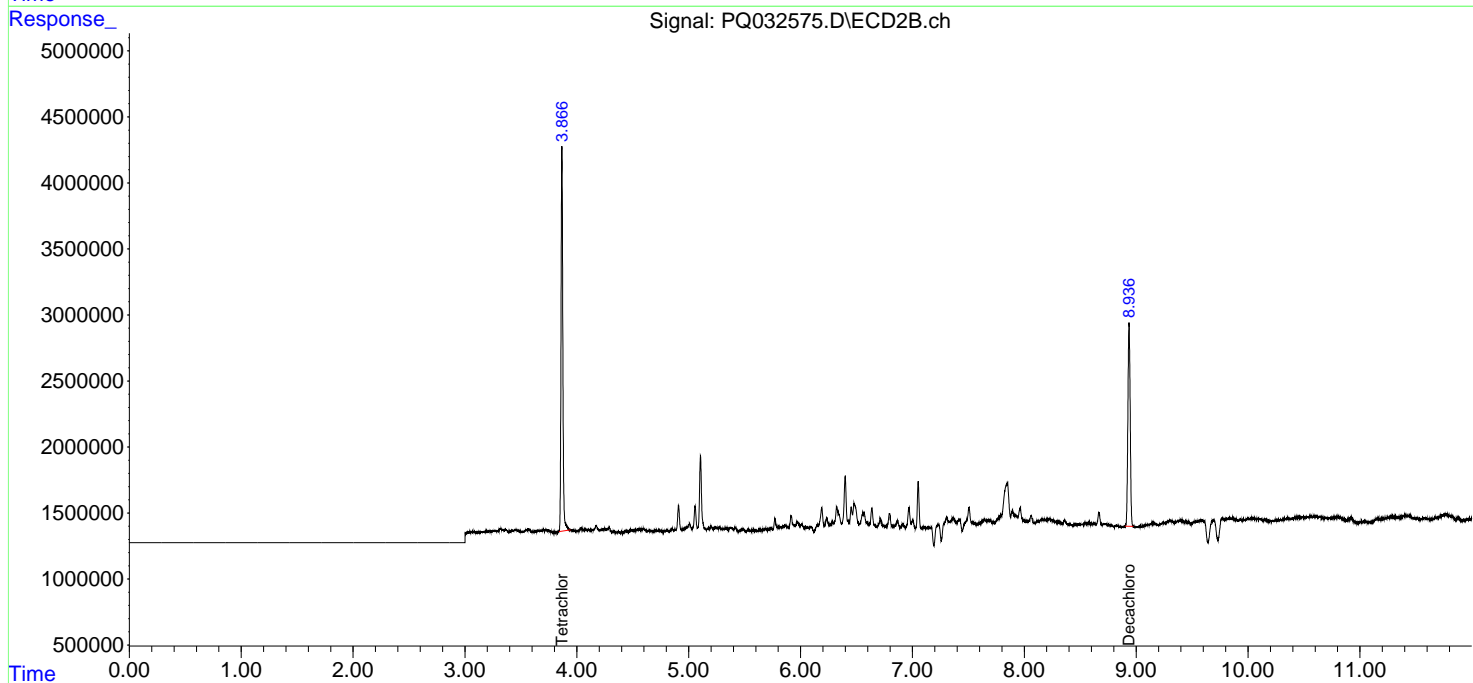
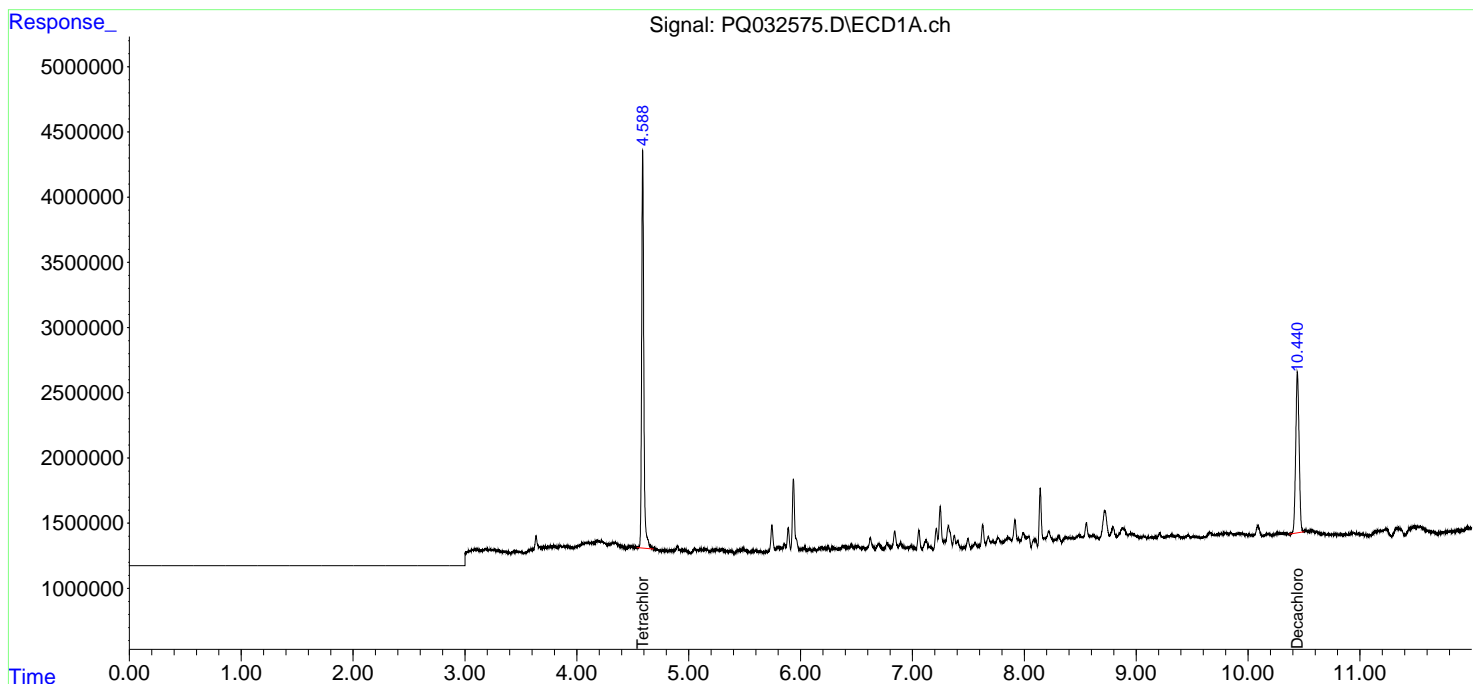
(f)=RT Delta > 1/2 Window (#)=Amounts differ by > 25% (m)=manual int.

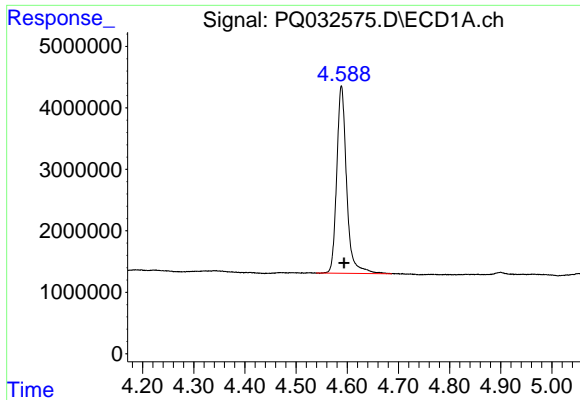
Data Path : Z:\pestpcbsrv\HPCHEM1\ECD_Q\Data\PQ100318\
 Data File : PQ032575.D
 Signal(s) : Signal #1: ECD1A.ch Signal #2: ECD2B.ch
 Acq On : 03 Oct 2018 12:36
 Operator : SM\SJ
 Sample : J5170-25
 Misc :
 ALS Vial : 16 Sample Multiplier: 1

Instrument :
 ECD_Q
 ClientSampleId :
 HC-SOIL-5

Integration File signal 1: autoint1.e
 Integration File signal 2: autoint2.e
 Quant Time: Oct 04 02:21:40 2018
 Quant Method : Z:\pestpcbsrv\HPCHEM1\ECD_Q\Method\PQ091818.M
 Quant Title : GC EXTRACTABLES
 QLast Update : Wed Sep 19 02:07:33 2018
 Response via : Initial Calibration
 Integrator: ChemStation

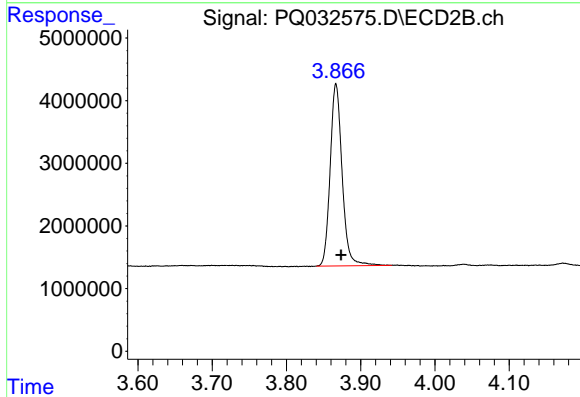
Volume Inj. : 2 µl
 Signal #1 Phase : ZB-MR1 Signal #2 Phase: ZB-MR2
 Signal #1 Info : 30Mx0.32mmx 0.50µ Signal #2 Info : 30M x 0.32mm x 0.25µm



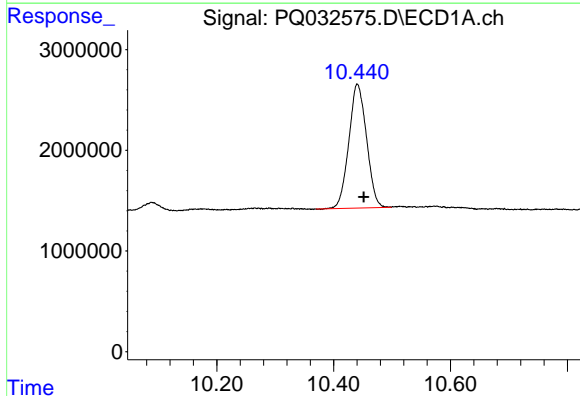


#1 Tetrachloro-m-xylene
 R.T.: 4.589 min
 Delta R.T.: -0.005 min
 Response: 40941449
 Conc: 17.66 ng/ml

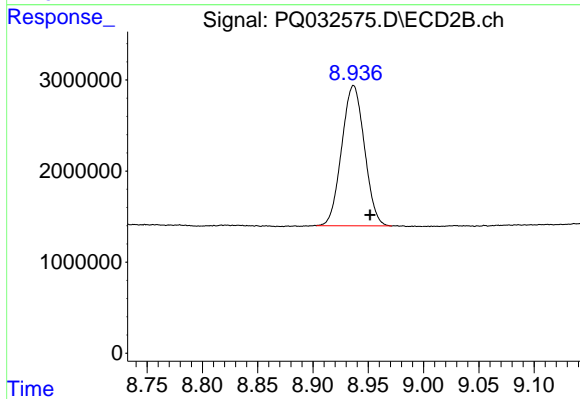
Instrument :
 ECD_Q
 ClientSampleId :
 HC-SOIL-5



#1 Tetrachloro-m-xylene
 R.T.: 3.867 min
 Delta R.T.: -0.007 min
 Response: 32512428
 Conc: 16.23 ng/ml



#2 Decachlorobiphenyl
 R.T.: 10.441 min
 Delta R.T.: -0.011 min
 Response: 25887163
 Conc: 12.42 ng/ml



#2 Decachlorobiphenyl
 R.T.: 8.936 min
 Delta R.T.: -0.016 min
 Response: 22002712
 Conc: 11.36 ng/ml m